

SIoux CITY
OMAHA
KANSAS CITY

MGC

- SLOAN
- COUNCIL BLUFFS
- WHITING
- PLATTSBURGH
- IOWA CITY
- NEBRASKA
- RULO
- CORNING
- CRAIG
- NEMAHA
- FOREST CITY
- ELWOOD
- ATCHISON
- ST. JOSEPH
- LEAVENWORTH
- RIVERSIDE

Flood Pictorial

MISSOURI RIVER

1 9 5 2

SIoux CITY
OMAHA
KANSAS CITY

- SLOAN
- COUNCIL BLUFFS
- WHITING
- PLATTSMOUTH
- NEBRASKA
- RULO
- CORNING
- CRAIG
- NEMAHA
- FOREST CITY
- ELWOOD
- ATCHISON
- ST. JOSEPH
- LEAVENWORTH
- RIVERSIDE

Flood Pictorial
MISSOURI RIVER
1 9 5 2

PHOTO STORY OF A FLOOD

This is a picture story of the Missouri Valley Flood A flood resulting in untold thousands of individual, heart-breaking tragedies along the course of the crushing, rolling crest of the Mighty Missouri.

Extensive use of aerial photography has been employed to give the viewer an over-all picture of the wide devastation.

Consider the plight of the thousands of displaced home owners who will return to the havoc and muck that only a flood can create.

It is a sad story. But not altogether without its bright aspects. Because it reflects the courageous, and indefatigable work, of the Corps of Engineers, Salvation Army, Red Cross, Civil Defense, Army & Volunteers who mobilized to stem the tide of the disaster. It is to these people that this book is dedicated.

RETURN TO BUD VARDIMAN

MLA Ref
Donovan
25 Jul
2018

PHOTO CREDITS:

Corps of Eng. Omaha District and Kansas City District

Vic Warrington

Dick Burton

Jack Walsh

Warner Studio Photos by Warner J. Untersee

**If your News Dealer cannot supply
additional copies, contact**

WARNER ENTERPRISES, INC.

**1703½ Grand Avenue
Kansas City, Missouri**



1. President Truman at Offutt Army Air Base. Seriously reflects what he viewed in an aerial survey of the area.



2. The great battle was to get the crest safely by this narrow channel through which the water was flowing at the fantastic rate of 286 billion gallons a day.



3. Red Cross Volunteers, serving flood refugees in the Council Bluffs Savior Lutheran Church used as a Red Cross Emergency feeding center.



4. Council Bluffs No. 14 St. levee, sandbag operations on levee by 201st Brigade from Camp McCoy, Wis.



5. Council Bluffs Dike which bore the brunt of the water's fury. A few miles further upstream the river fanned out to a fantastic width of twelve miles.



6. Water purification plant in Council Bluffs. Note earth piled and bags in front.



7. Omaha. Looking south on new back levees being built at Jones St. Pumping Station.



8. Elwood, Kansas, west of St. Joseph, Mo.



9. Rosecrans Field, St. Joseph, Mo. The navy should take over this installation.



10. Sioux City, Iowa. Rescue operations by boat from So. Sioux City bridge. Men transported to levee by boat crews.



11. Sioux City, Iowa. Virginia St. inundated by Missouri River.



12. Craig, Mo. Here hours of toil and determination paid off.



13. Near Florence. Farm house inundated.



14. Near Florence, farm house inundated—stage approximately 29.5.



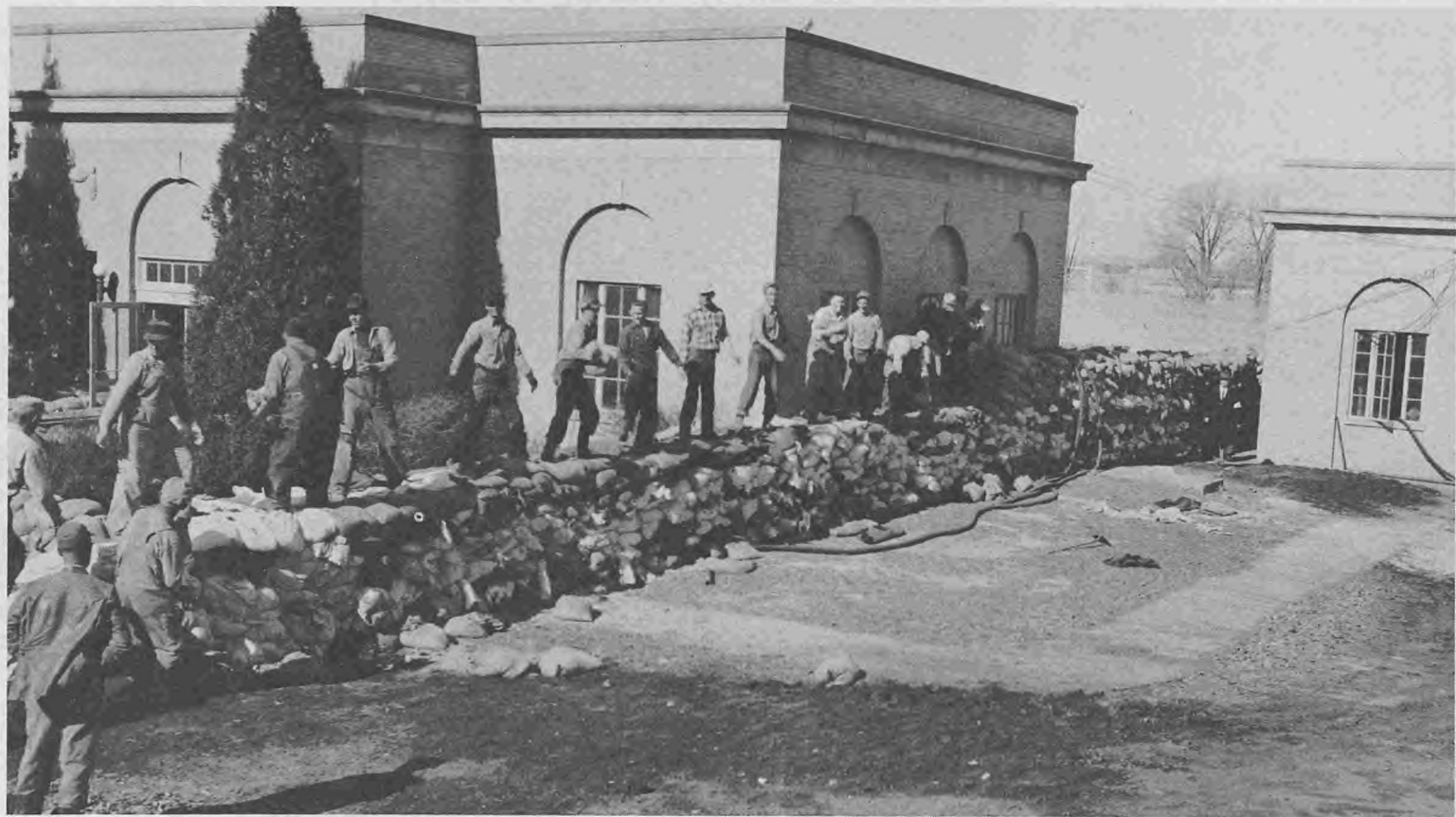
15. So. Sioux City. House partially submerged with possessions on roof.



16. Added height and strength was given to the Omaha floodwall by the Corps of Engineers with the construction of flashboarding backed with sandbagging.



17. Scenes like this were common throughout Council Bluffs, Iowa, where approximately 40,000 residents were evacuated as a precautionary measure.



18. Omaha. Exteriors of Florence St. Pumping Station sandbagging intake structure.



19. Dr. E. A. Bean and Red Cross nurse Mrs. Anna Länson examine an unidentified—and thoroughly unhappy—baby at Danish Hall, Red Cross emergency shelter in Council Bluffs.



20. Hamburg. Half the town inundated.



21. Corning, Mo. Sunday, April 20th.



22. Fortescue, Mo. Not a sign of life.



23. McPaul, Iowa, goes under.



24. Percival, Iowa.



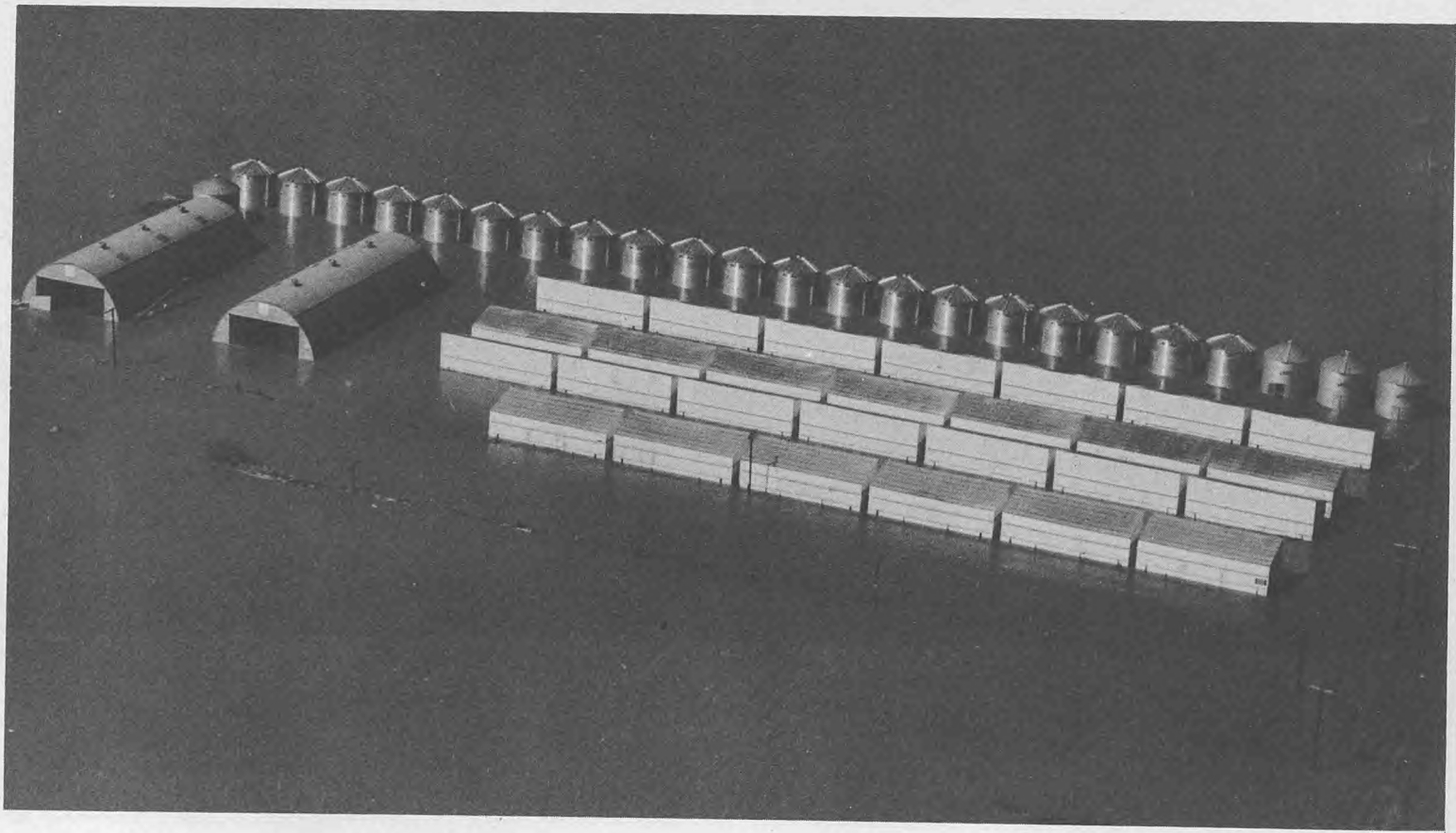
25. Elwood, Kansas. West of St. Joseph, Mo.



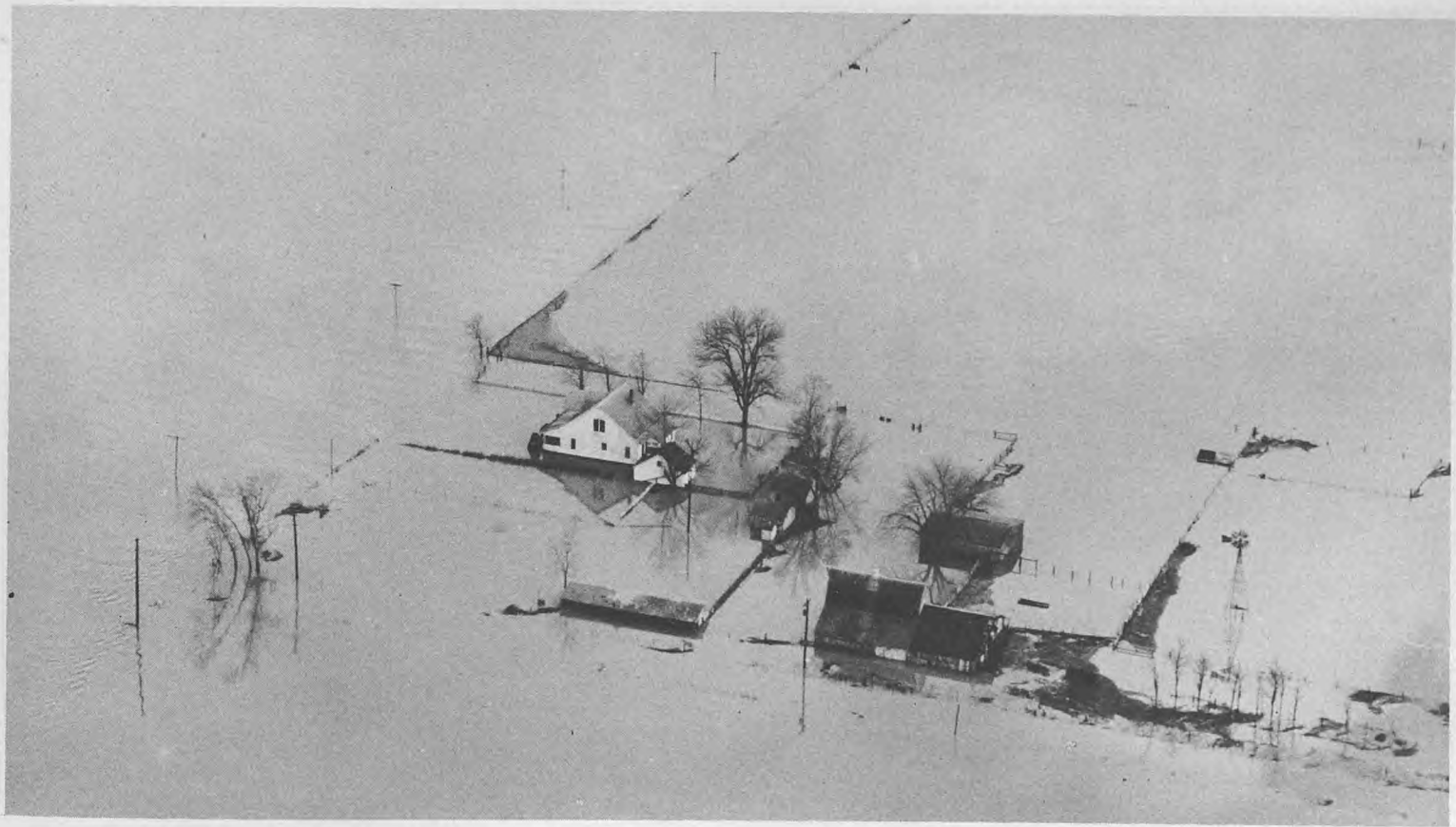
26. Hamburg, Iowa.



27. Bartlett.



28. Government grain storage north of Percival.



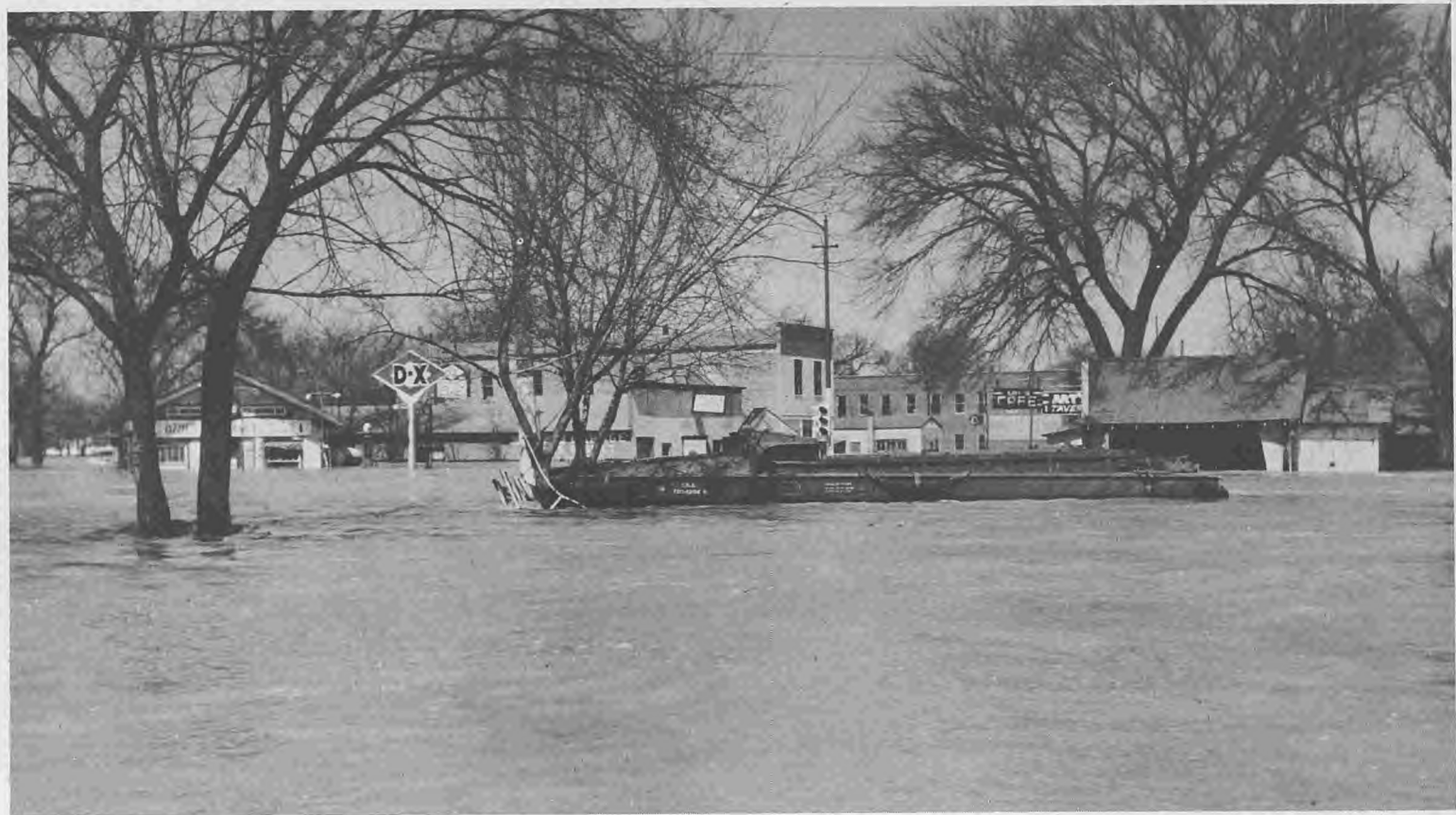
29. South of Craig.



30. Langdon, Iowa on Saturday, 19th of April, 4 P. M.



31. One-half mile south of Langdon.



32. So. Sioux City. Amphibious duck Army vehicle stalled during rescue operations and temporarily abandoned.



33. So. Sioux City. Boat crews waiting call for evacuation of people.



34. Monster earth moving machines cut down hill. Note trucks along level.



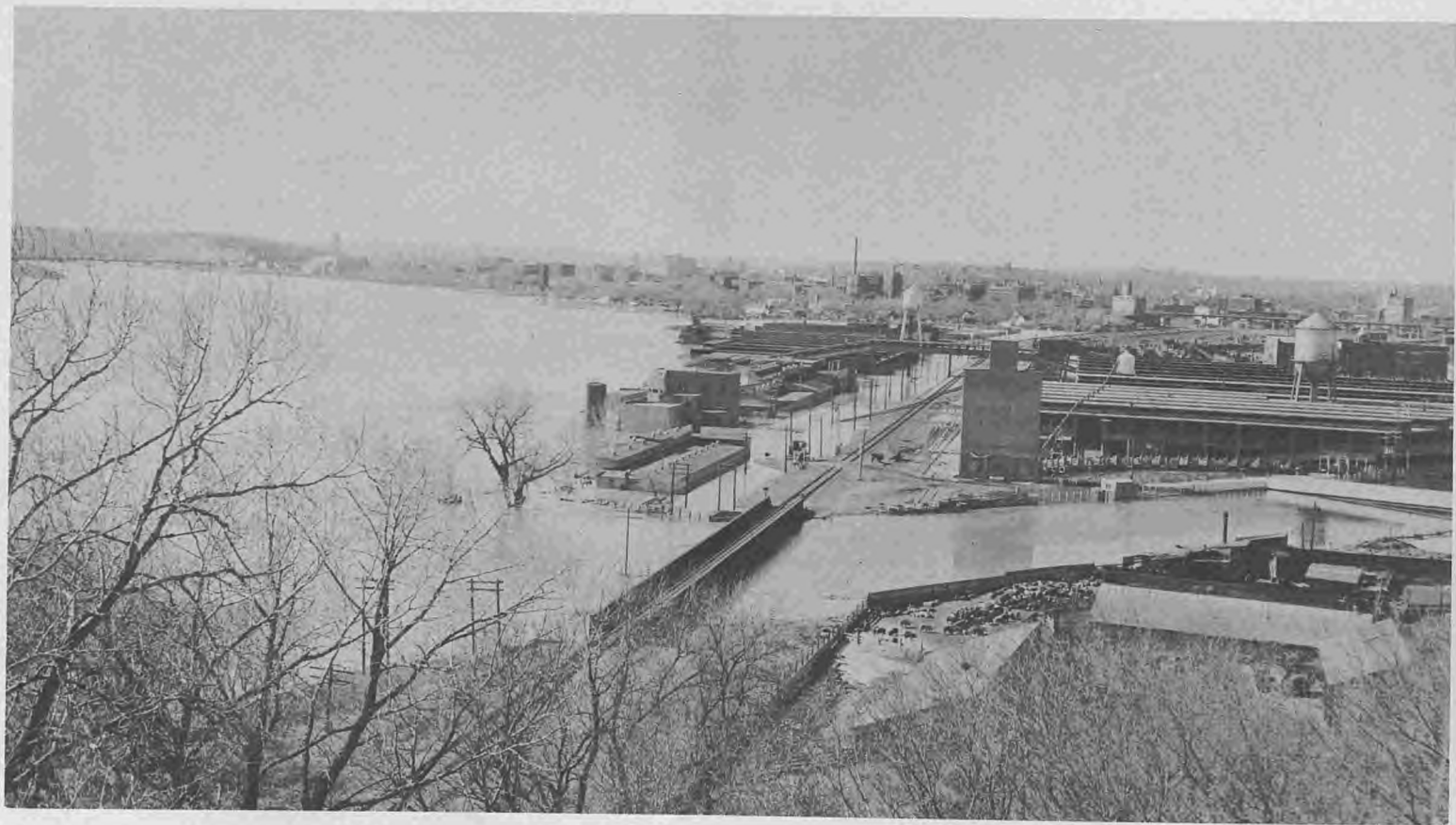
35. Operation Sandbag. Army workers protecting levee 488 near Forest City, Mo.



36. Leavenworth Federal Penal Farm isolated.



37. Leavenworth. Ironically these boats remain high and dry at the Leavenworth, Kans., boat yard.



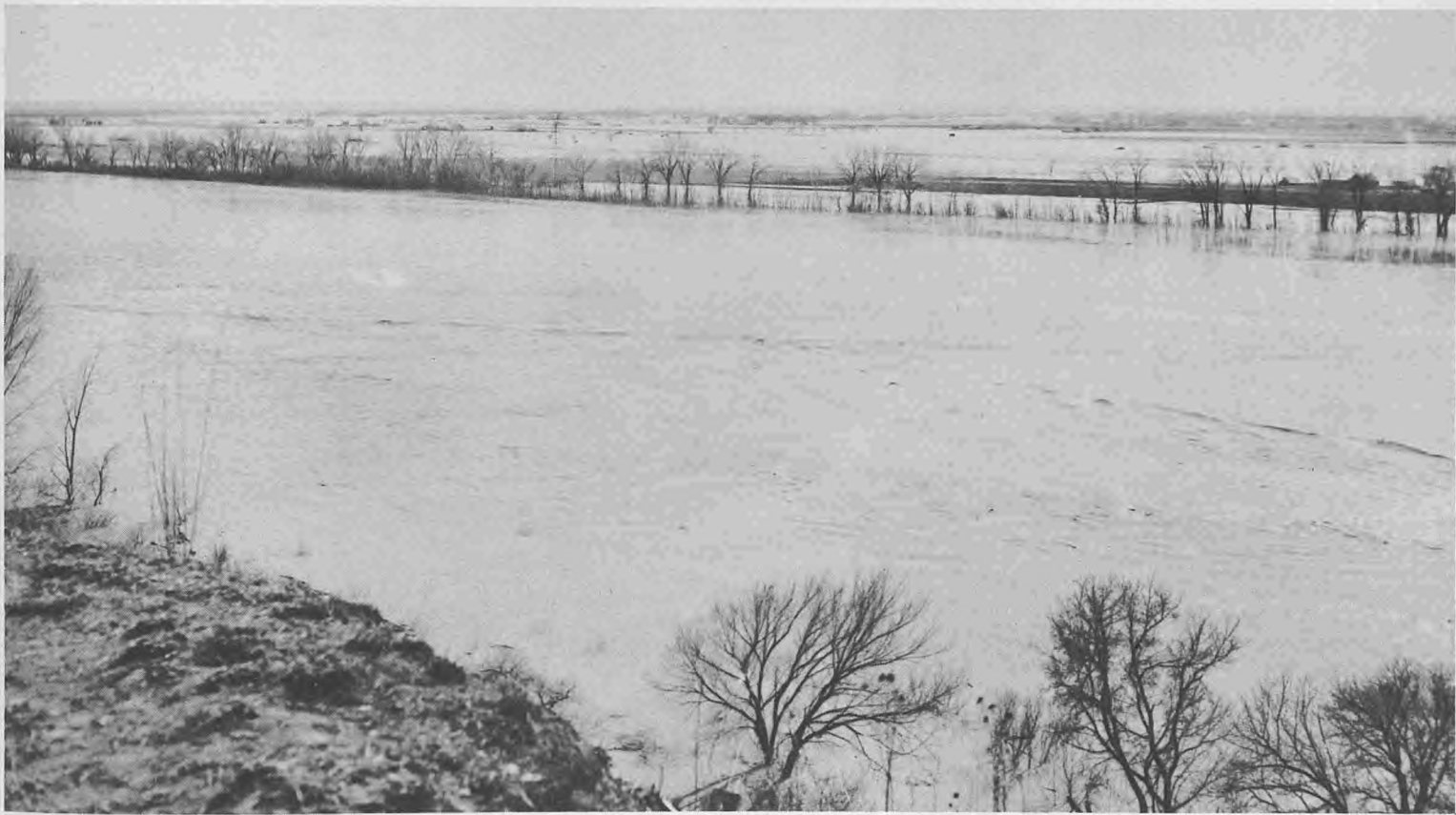
38. Sioux City, Iowa. Stockyards and River Channel looking north.



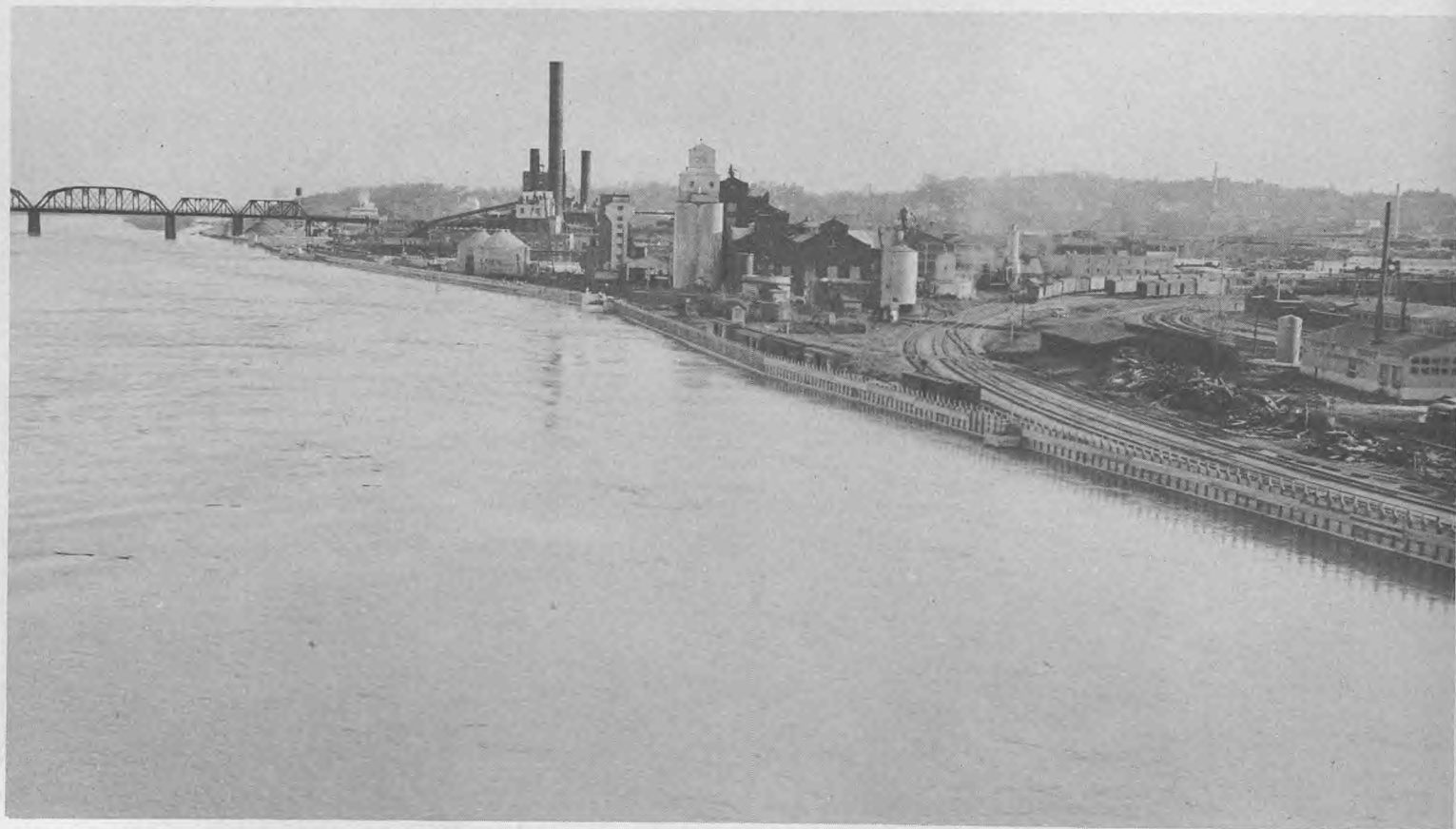
39. So. Sioux City, Neb. Church located on Dakota Ave. next to City Hall. Notice sand bag protection.



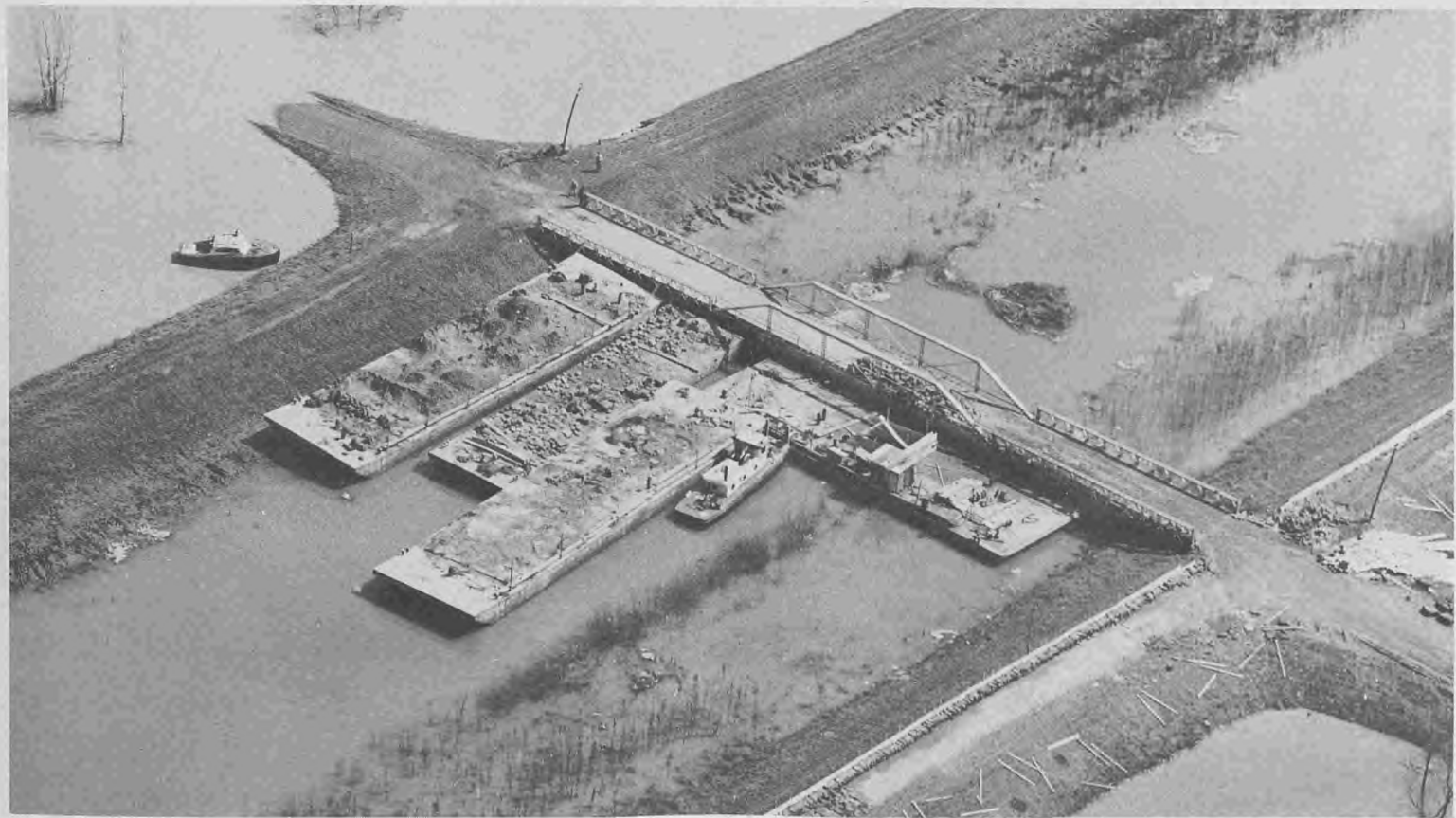
40. So. Sioux City, Neb. Buildings at foot of bridge leading to Sioux City proper, completely inundated.



41. Sioux City, Iowa. Water spreading in valley. Photo taken on promontory south of railroad trestle and off of Highway 75, looking southwest.



42. Omaha. Douglas St. Bridge, downstream view.



43. Near Percival. Rock barges sheltered on downstream side of an agricultural levee.



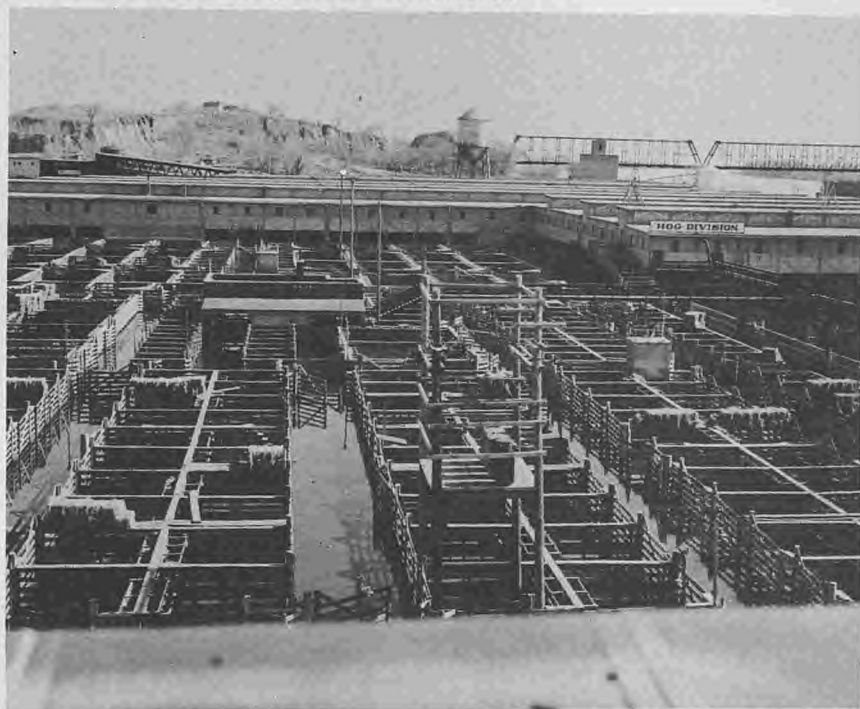
44. Omaha. Backwater—Pershing and Minne Lusa, sandbagging.



45. Omaha. Minne Lusa and Pershing Drive, looking south from railroad tracks. Note submerged house at Scott St. sign.



46. Sioux City, Iowa. City Engineer and George Neal, President of Iowa Public Service Co., supervising installation of pump which is removing water from sanitary sewer to street level.



47. Sioux City. Water in pens, hog division in background, Armour & Co.



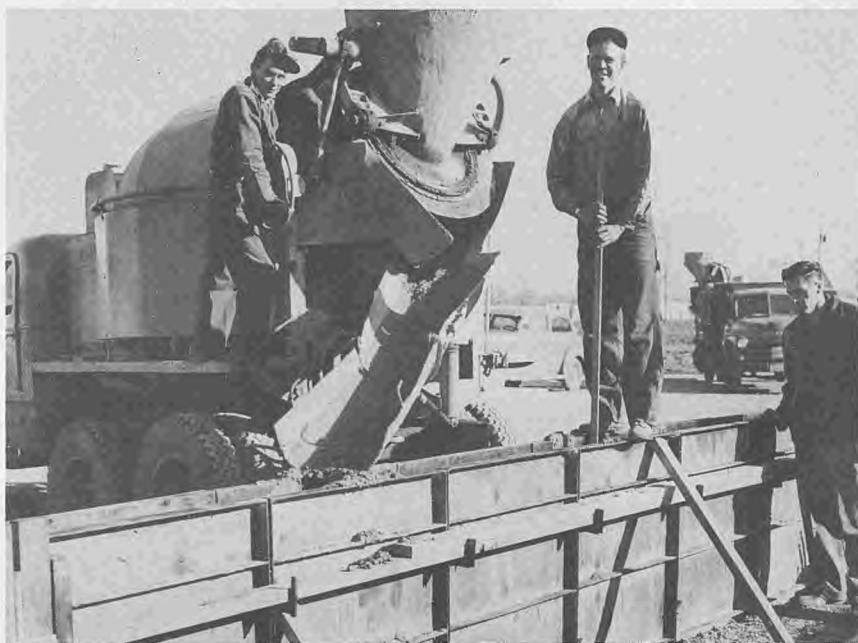
48. So. Sioux City. Public school building partially under water. No school today.



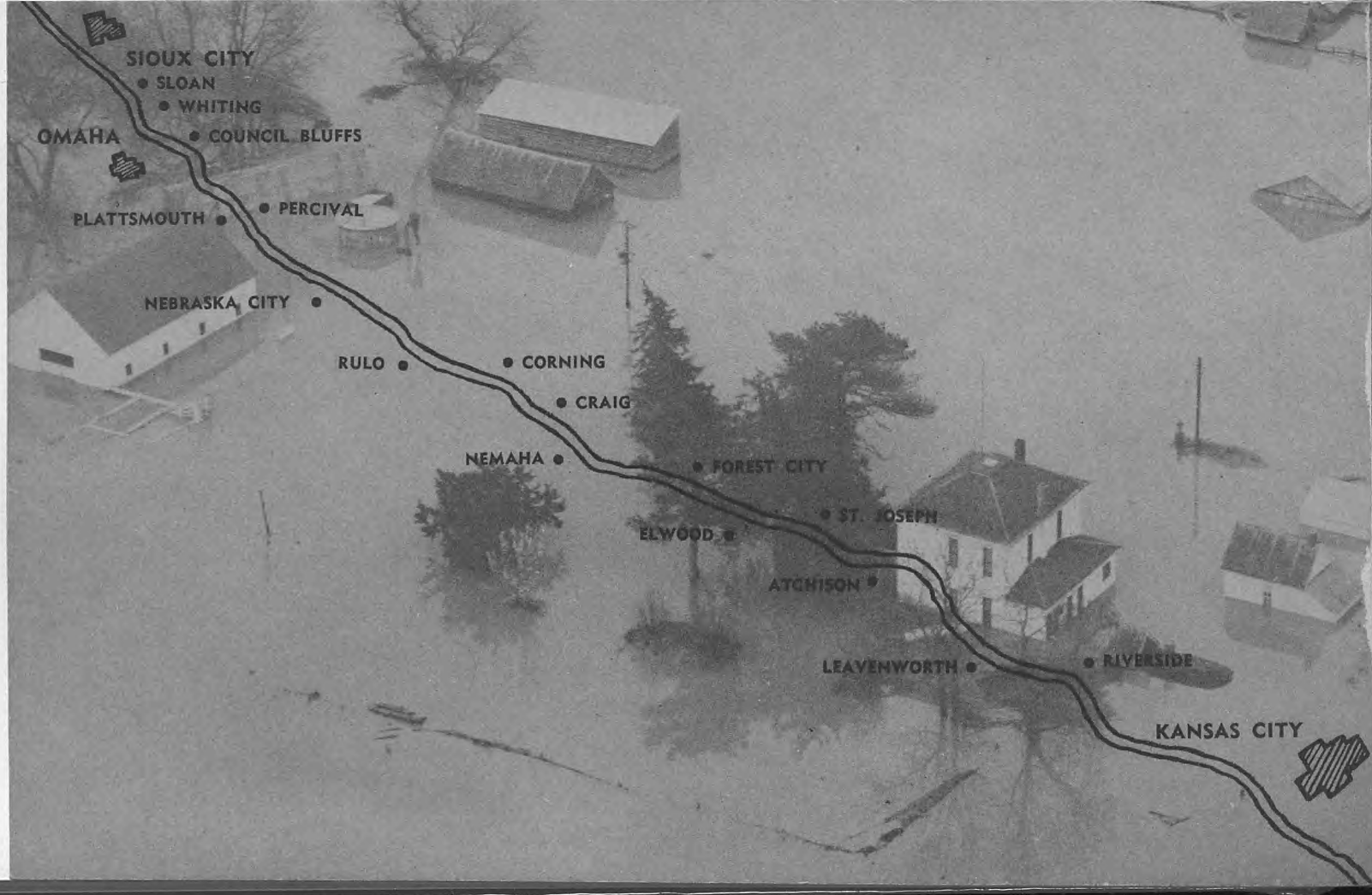
49. Whiting, Iowa. Sand bag filling operation stopped for chow—9:00 A. M. This crew had worked all through the night without a stop.



50. Ft. Leavenworth, Kansas. Building levee at Sherman Field. Workers on levee.



51. E. H. Young, at right, erecting a 660-ft. concrete dike around his Red X Market in Riverside, Mo., in an attempt to avert a repetition of an 80,000 dollar loss sustained in the 1951 flood.



SIoux CITY

• SLOAN
• WHITING

OMAHA

• COUNCIL BLUFFS

PLATTSMOUTH

• PERCIVAL

NEBRASKA CITY

• RULO

• CORNING

• CRAIG

NEMAHA

• FOREST CITY

ELWOOD

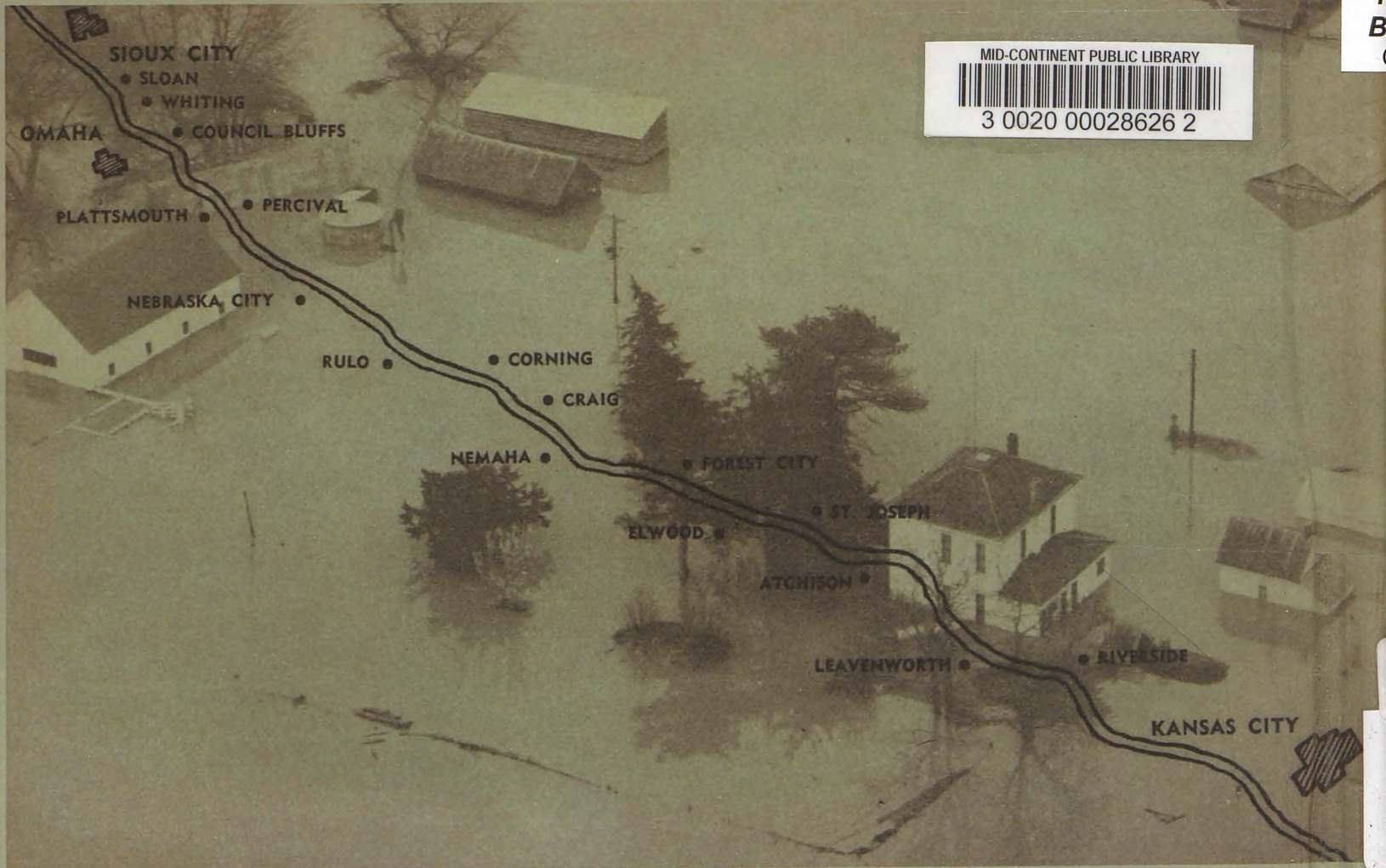
• ST. JOSEPH

ATCHISON

LEAVENWORTH

• RIVERSIDE

KANSAS CITY



MID-CONTINENT PUBLIC LIBRARY
3 0020 00028626 2

SIOUX CITY

• SLOAN
• WHITING

OMAHA

• COUNCIL BLUFFS

PLATTSMOUTH

• PERCIVAL

NEBRASKA CITY

• RULO

• CORNING

• CRAIG

NEMAHA

• FOREST CITY

ELWOOD

• ST. JOSEPH

ATCHISON

LEAVENWORTH

• RIVERSIDE

KANSAS CITY

M
B
C