

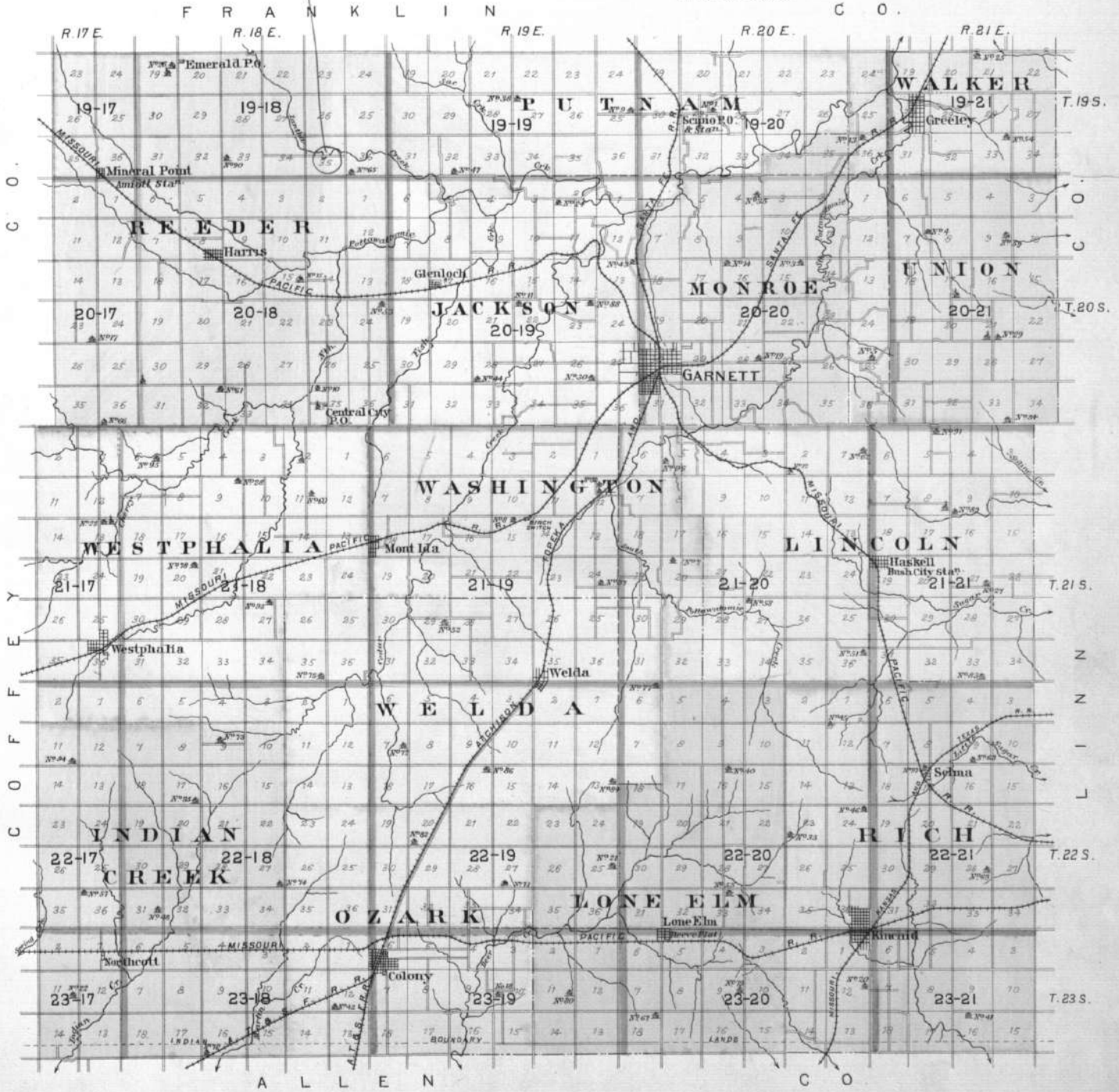
*Indian
Burial ground. See
Archives map & notes.*

EXPLANATION

- Section Line
- Form or lot line
- Wagon Road
- Railroad
- Creeks & Springs
- Houses
- Churches
- School Houses
- Adjacent lands owned by same party connected by a lease, thus
- Post Office
- Coal, Lead or Zinc Mine
- County Bridge

OUTLINE MAP OF
ANDERSON CO.
 KANSAS
 1901

Scale: 1/2 inch to 1 mile.

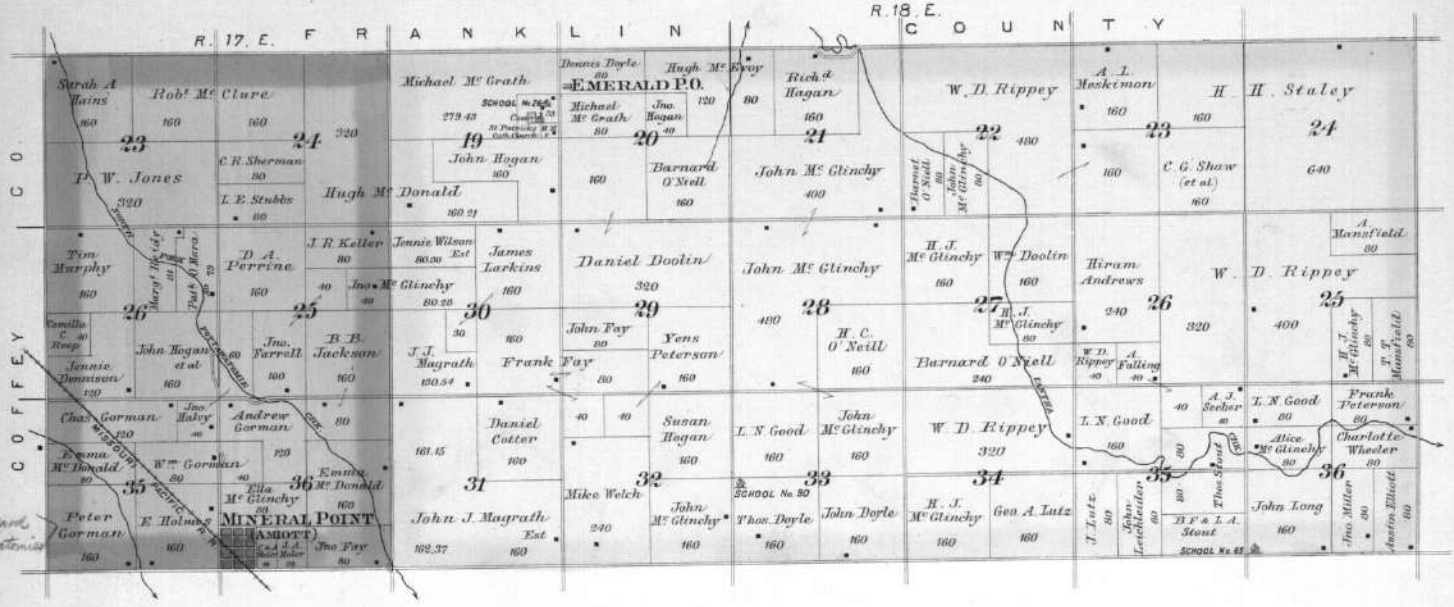


Ancient graveyard on west bank
of Elm Creek, Sec 35, Tp 19, R. 18
Probably Palaeozoic.
See 1880 map and S. S. Anderson
West of Mineral Point, 2 m.

TOWNSHIP 19 SOUTH RANGE 17 & 18 EAST

Scale 2 Inches to the Mile.

of the 6th Principal Meridian.



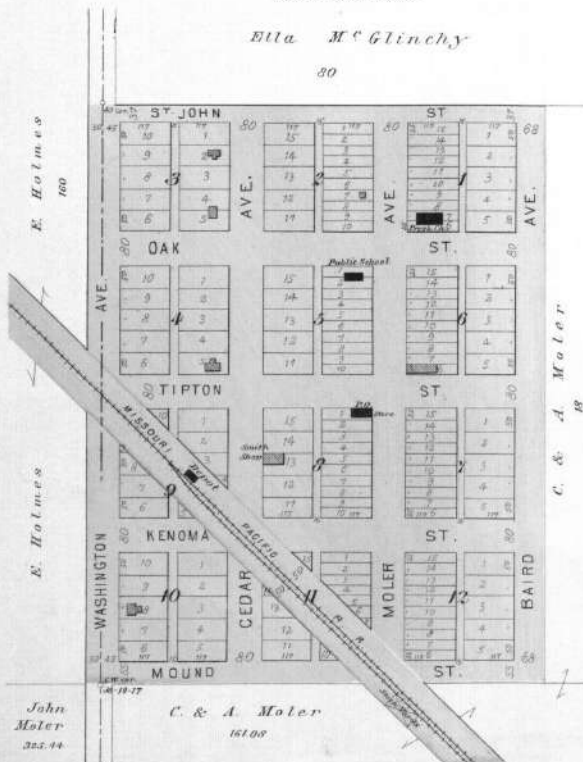
MINERAL POINT P.O.

R. R. STATION.
"AMIOT"

LOCATED IN REEDER TWP.
Scale 200 Ft. to 1 in.

Ella M. Glinchy

80

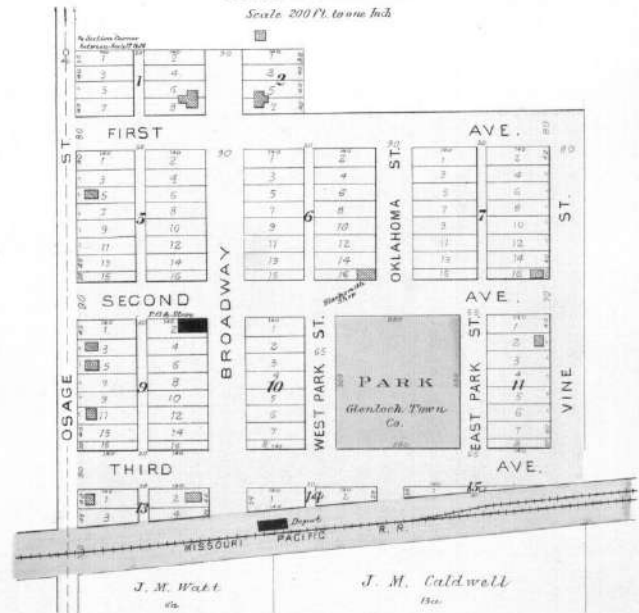


John Moler 352.44

C. & A. Moler 161.00

GLENLOCH

LOCATED IN JACKSON TWP.
Scale 200 Ft. to 1 in.



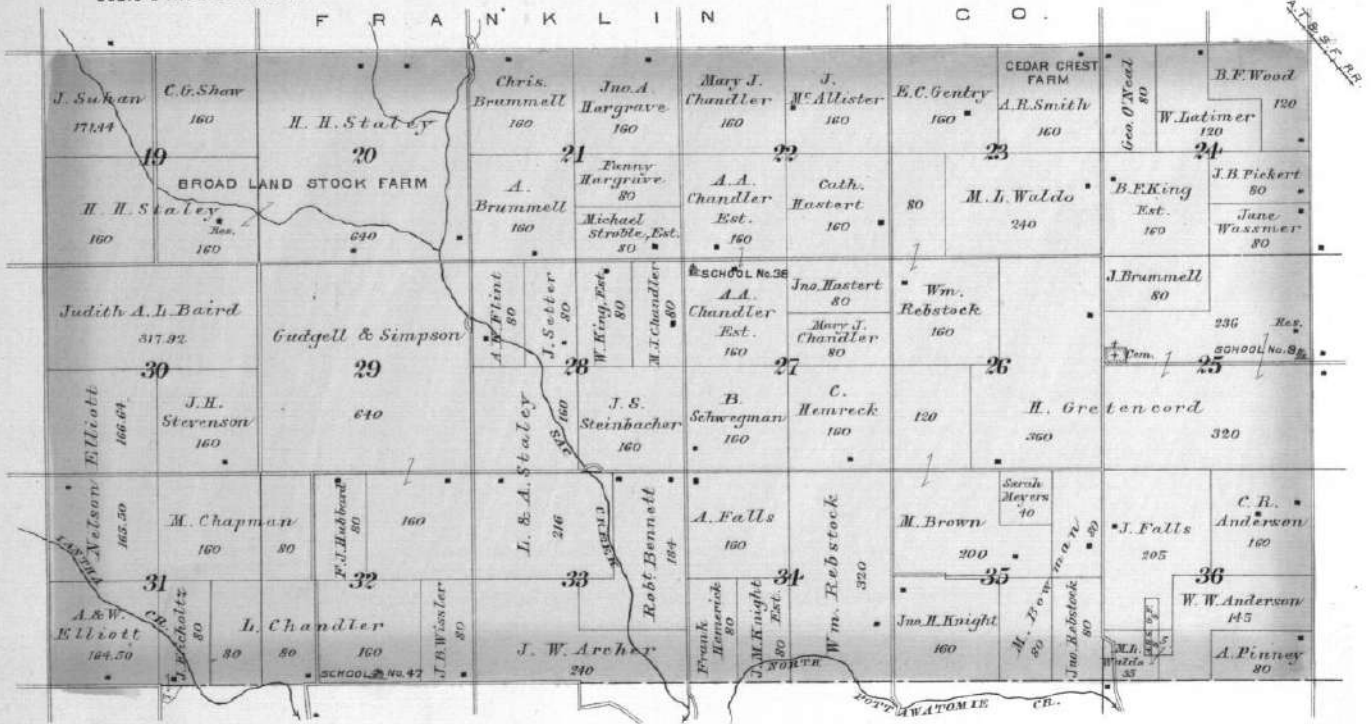
J. M. Watt 65.

J. M. Caldwell 130.

TOWNSHIP 19 SOUTH RANGE 19 EAST

Scale 2 Inches to the Mile.

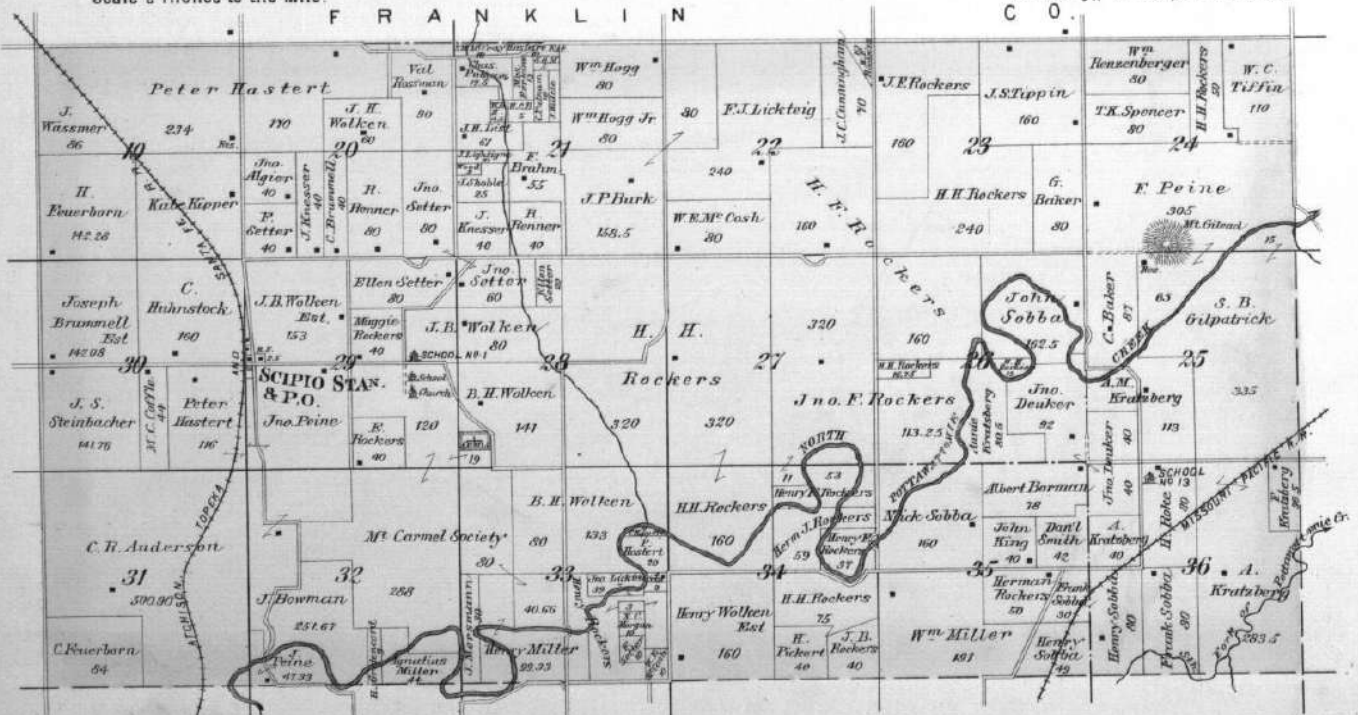
of the 6th Principal Meridian.



TOWNSHIP 19 SOUTH RANGE 20 EAST

Scale 2 Inches to the Mile.

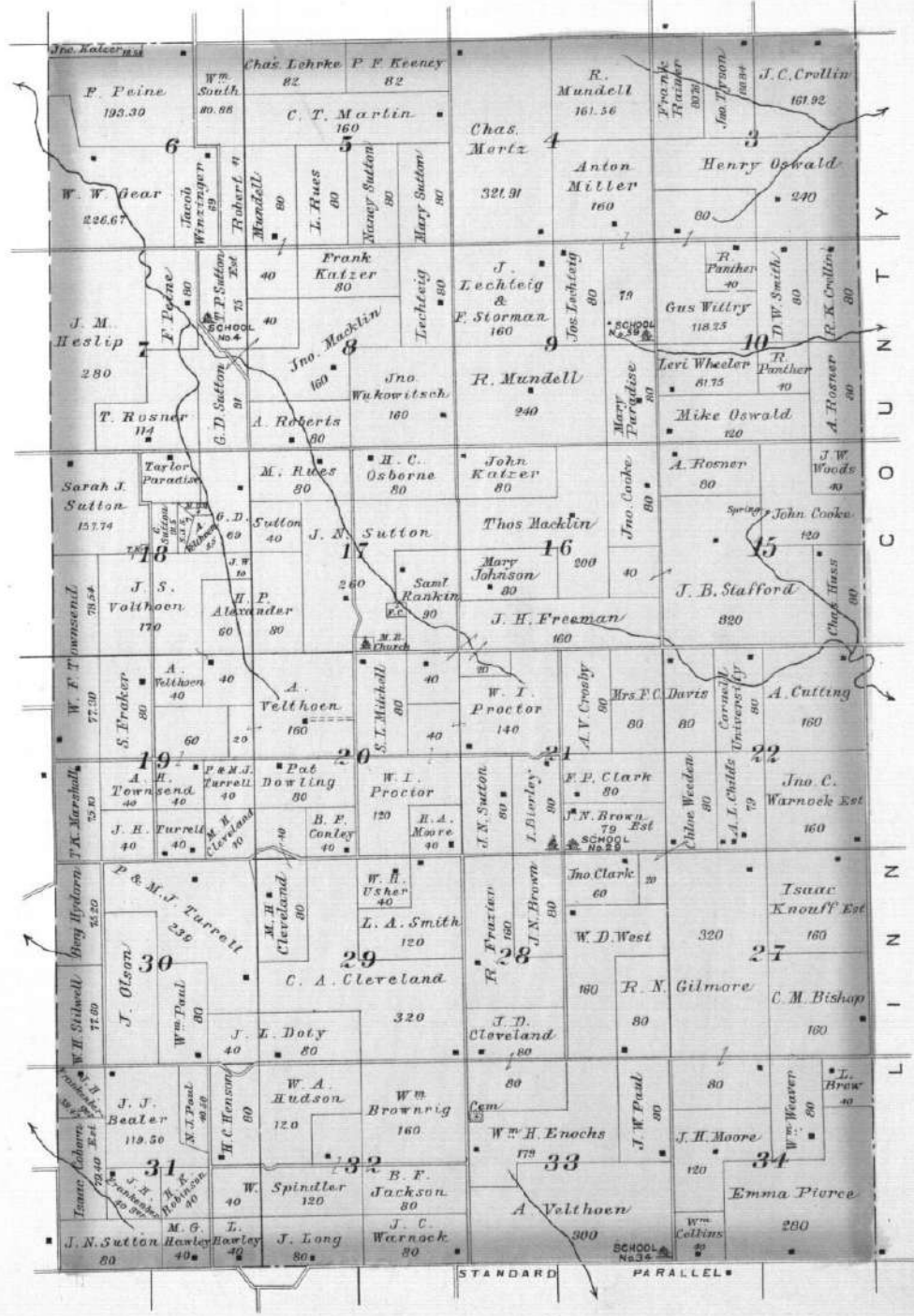
of the 6th Principal Meridian.



TOWNSHIP 20 SOUTH RANGE 21 EAST

Scale 2 Inches to the Mile.

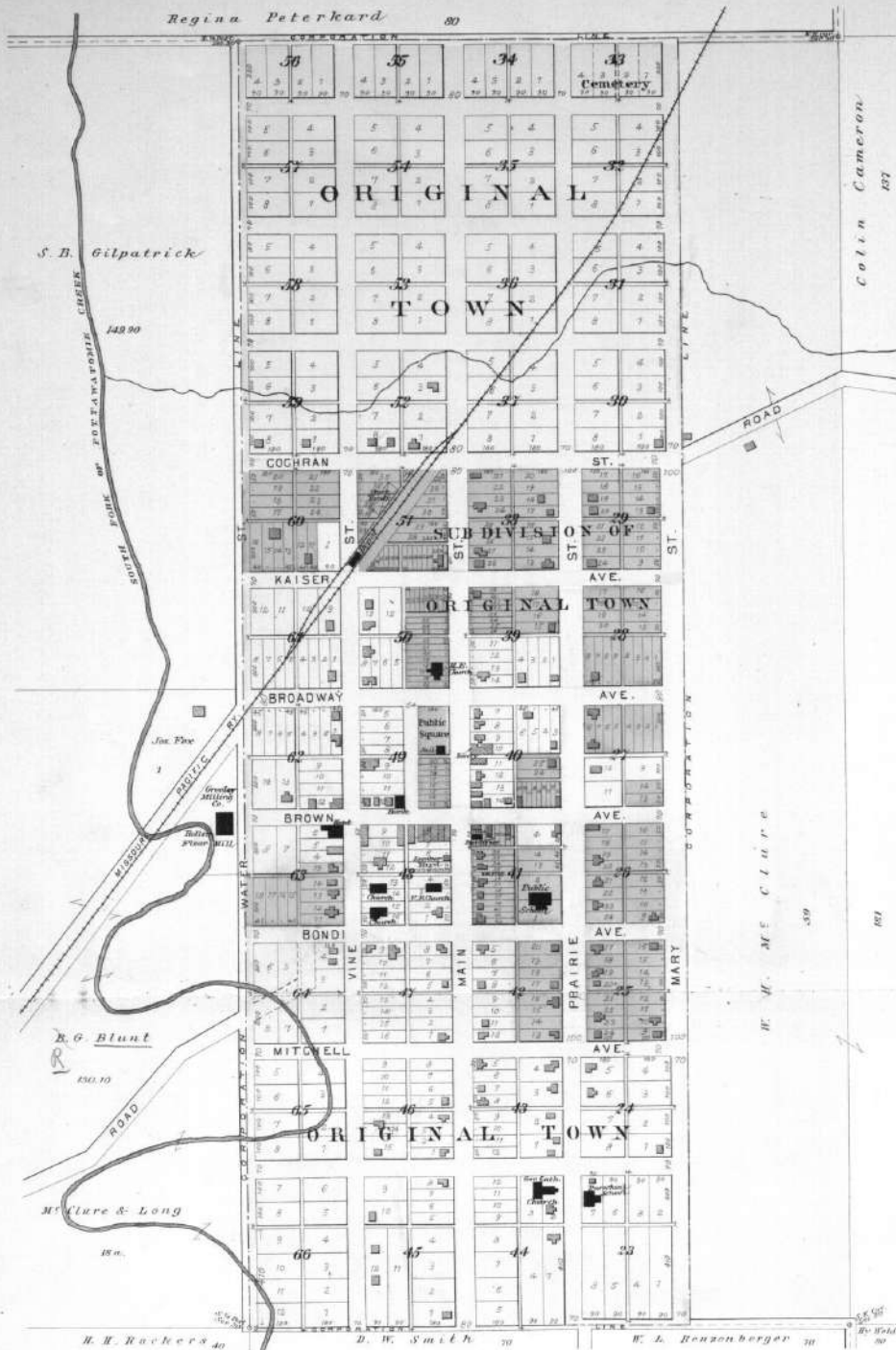
of the 6th Principal Meridian.



STANDARD PARALLEL

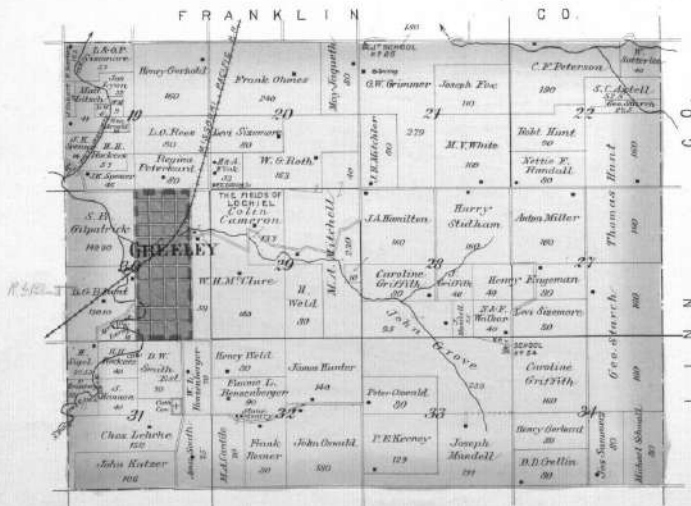
GREELEY

LOCATED IN WALKER TWP.
Scale: 300 feet to Inches.



Scale 2 Inches to the Mile.

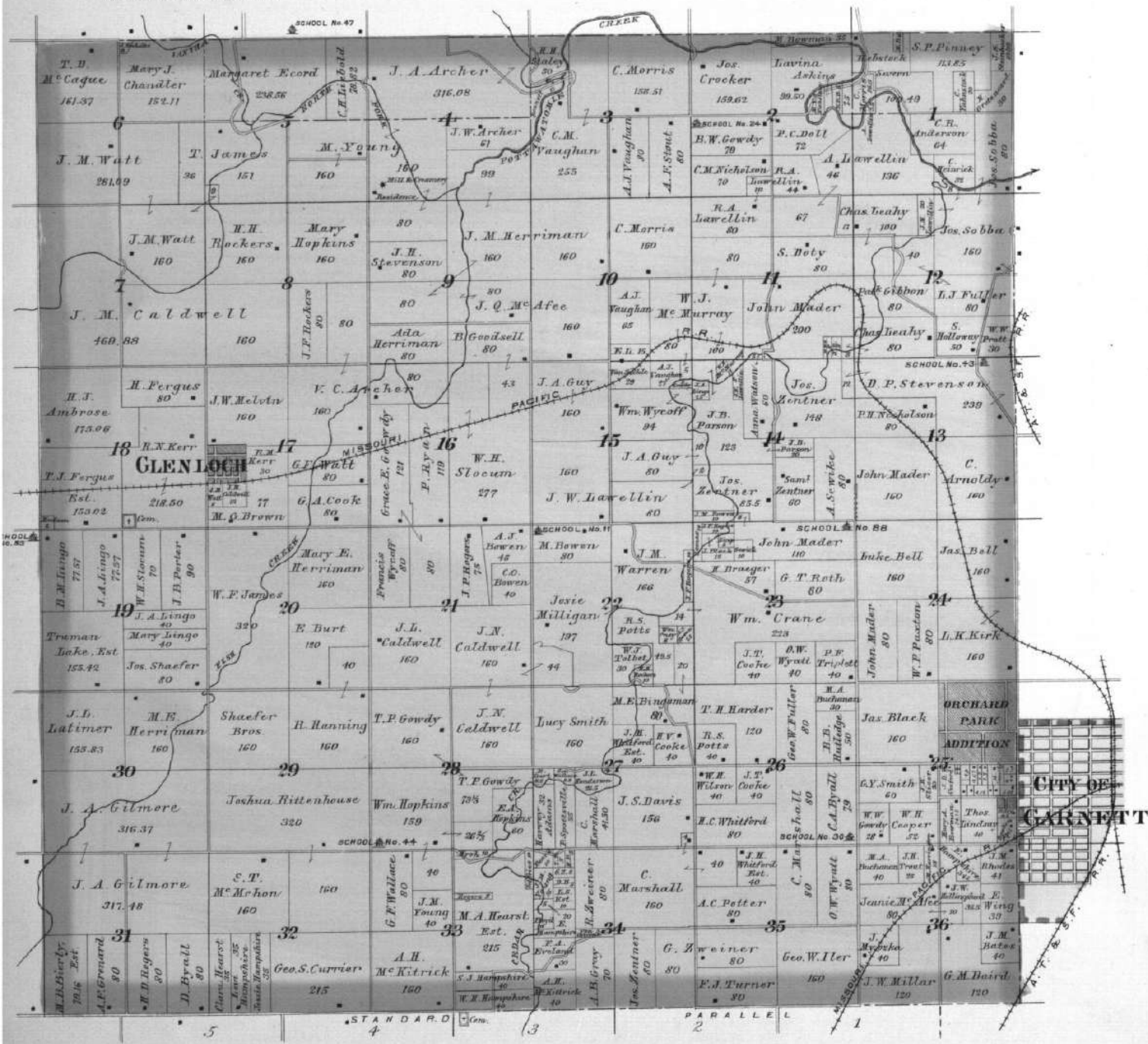
of the 6th Principal Meridian.



TOWNSHIP 20 SOUTH RANGE 19 EAST.

Scale 2 Inches to the Mile.

of the 6th Principal Meridian.



TOWNSHIP 20 SOUTH RANGE 20 EAST.

Scale 2 Inches to the Mile.

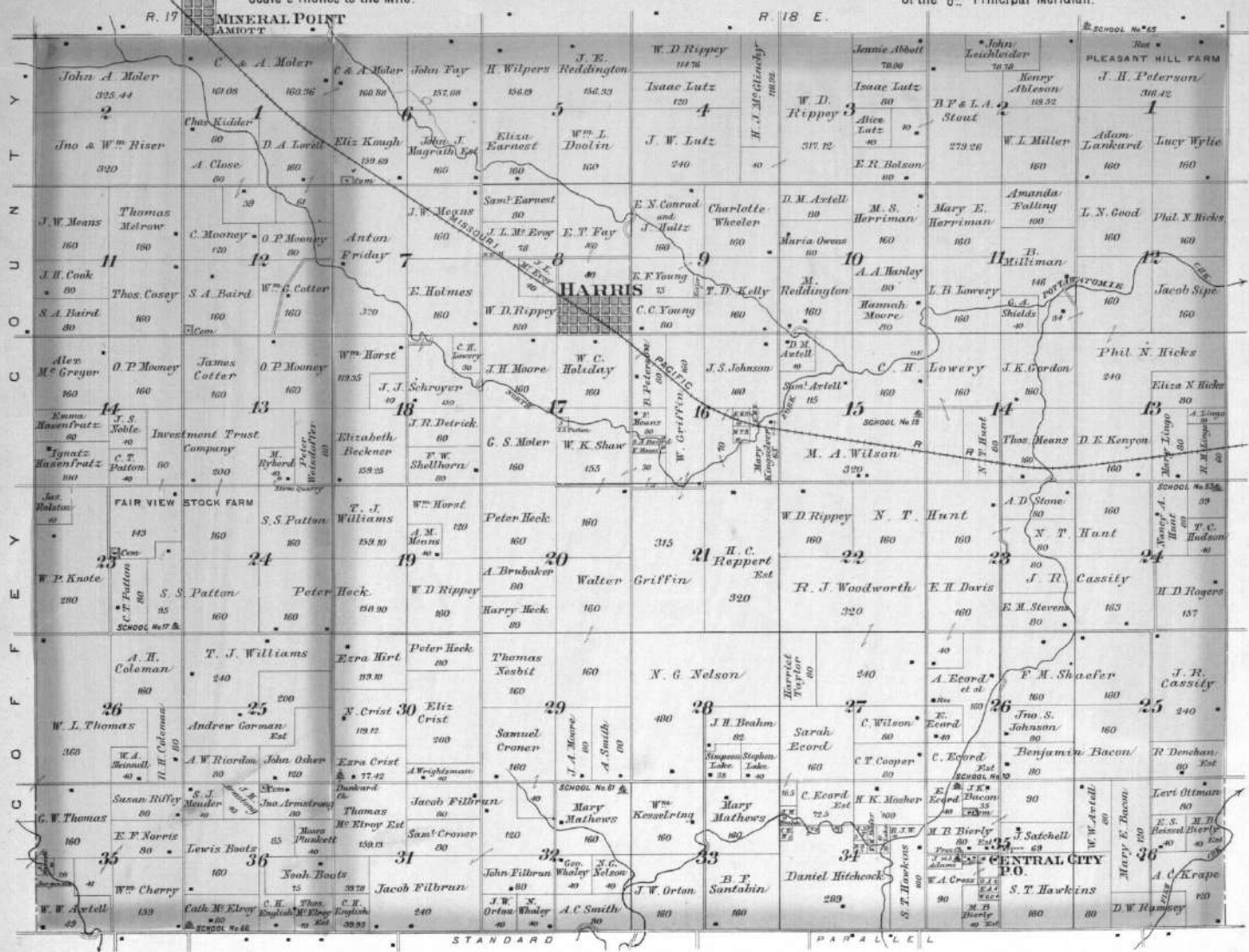
of the 6th Principal Meridian.



TOWNSHIP 20 SOUTH RANGES 17 & 18 EAST

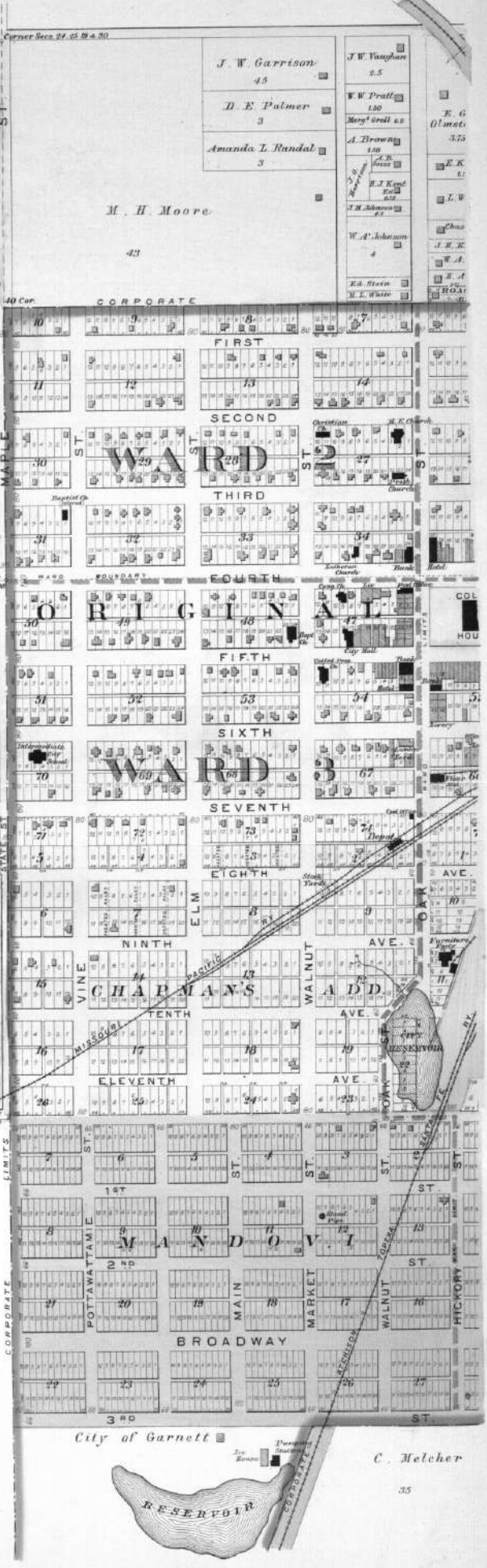
Scale 2 Inches to the Mile.

of the 6th Principal Meridian.



STANDARD

PARALLEL



WEST PART
THE CITY OF
GARNETT
COUNTY SEAT OF ANDERSON CO.

Scale 300 ft. to one inch.



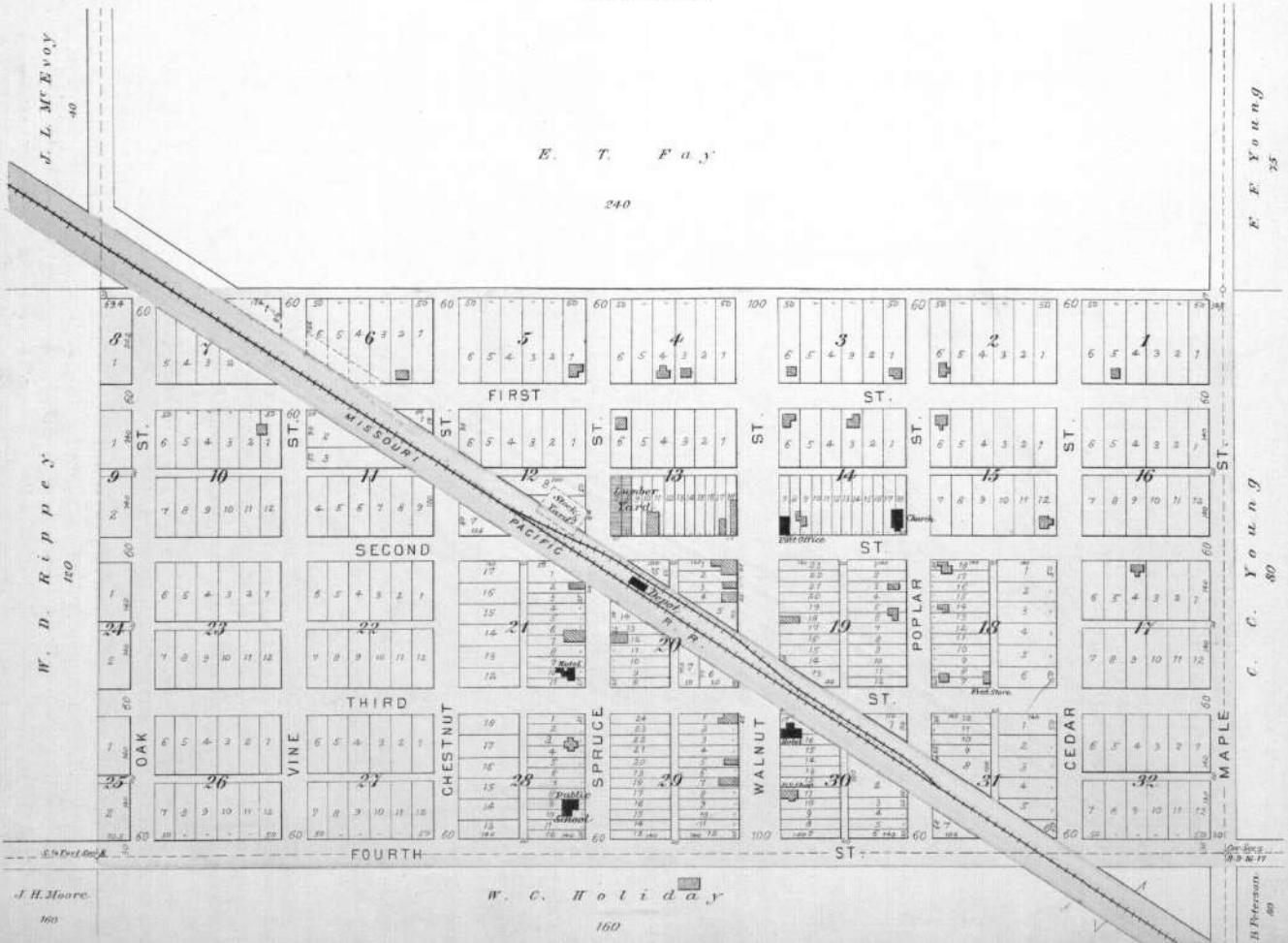
HARRIS

LOCATED IN REEDER TWP.

Scale: 200 Ft. to 1 in.

E. T. F a y

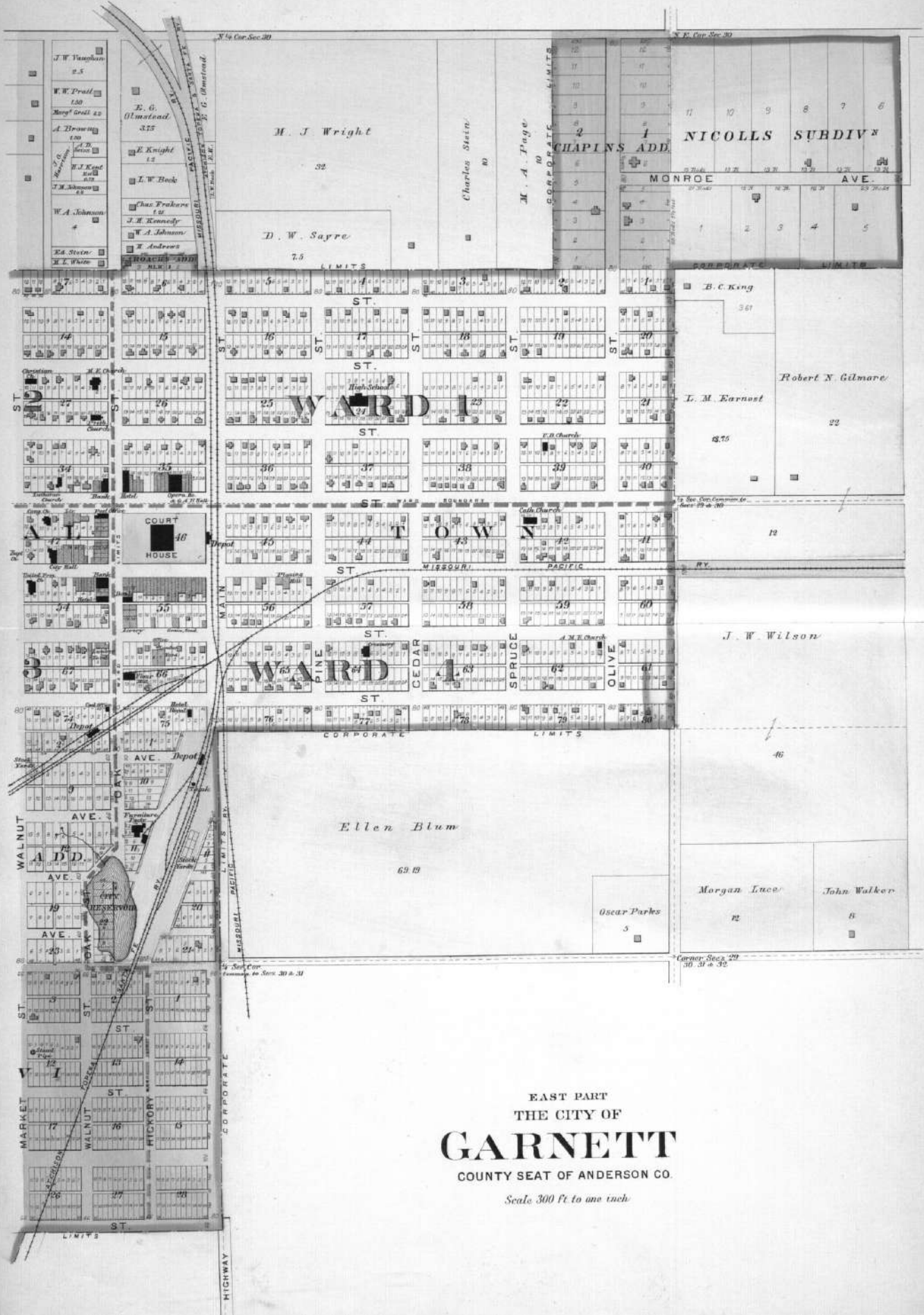
240



F. F. Young
25

C. C. Young
80

B. Peterson
40



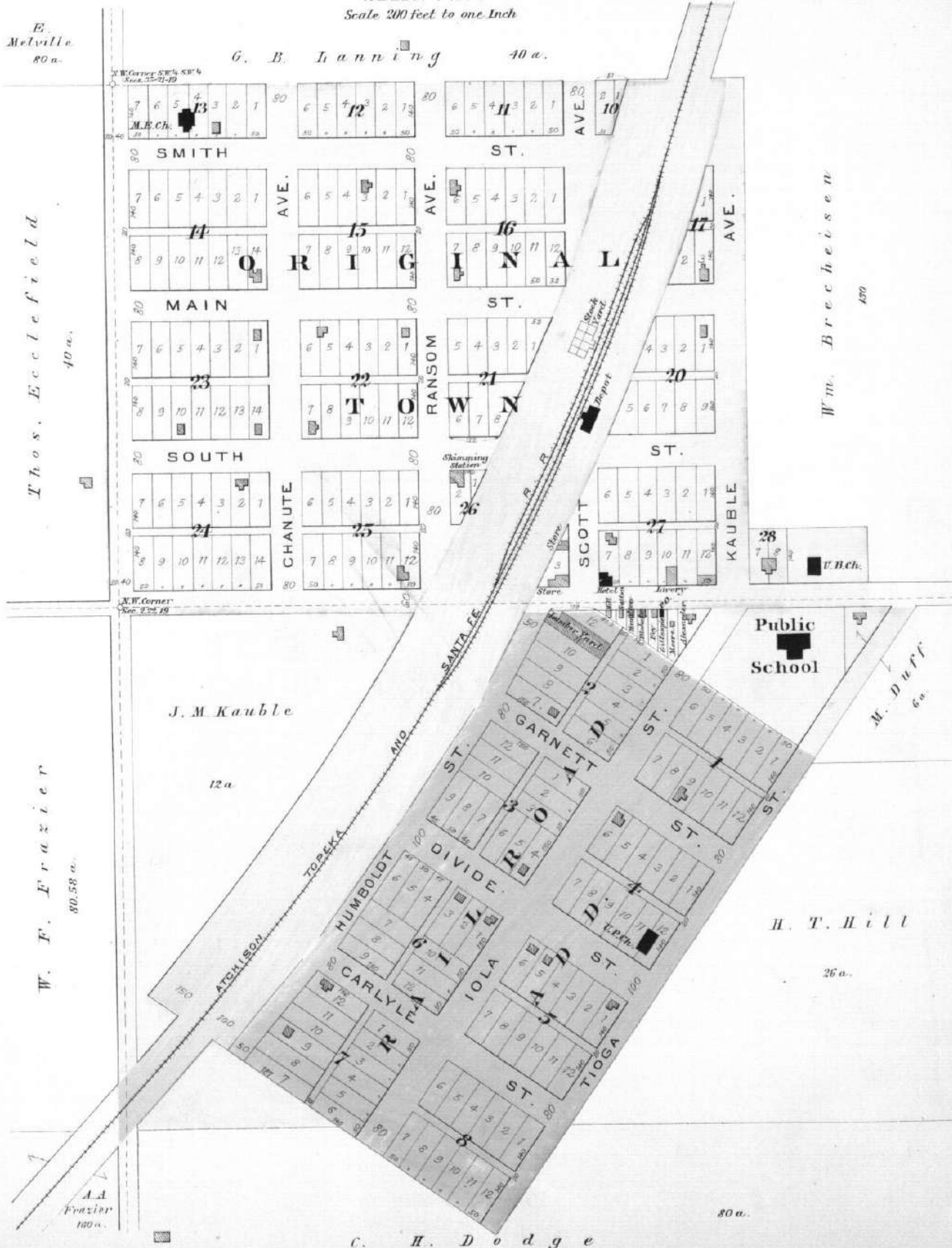
EAST PART
THE CITY OF
GARNETT
COUNTY SEAT OF ANDERSON CO.

Scale 300 ft to one inch

WELDA

WELDA TWP.

Scale 200 feet to one Inch



C. H. Dodge

WESTPHALIA

Formerly CORNELL.

LOCATED IN WESTPHALIA TWP.

Scale: 300 Feet to 1 inch.

V. Highberger

149

Henry Brenton 1	H. Kerplugh 1	PUBLIC SCHOOL NO 56	J.R. Strubens 1
-----------------------	---------------------	---------------------------	--------------------

FIRST AVE
ST
SECOND AVE
THIRD AVE
ST
ADD
SCHEES

Peter Ketter Jr.

300

Alvise Manning

J. F.
Churchman

52

SUPPLEMENT TO
GARRISON
MERRILL'S
J.C. MERRILL'S
LINCOLN
ADD N
LONERGAN
MOORE
STANARD
AVE.

ORIGINAL
TO W
THOMAS
WARNE
AVE.
DIVISION
PACIFIC
MISSOURI

CREAMERY
Westphalia Creamery
Comp'y

Peter
Ketter Jr.

104

John Hoefler

211a

Westphalia
Cemetery.

ST JOHN
ST
HENDRICKS
ST
J. HIGHBERGER'S
ADD N
CLEVELAND
ST

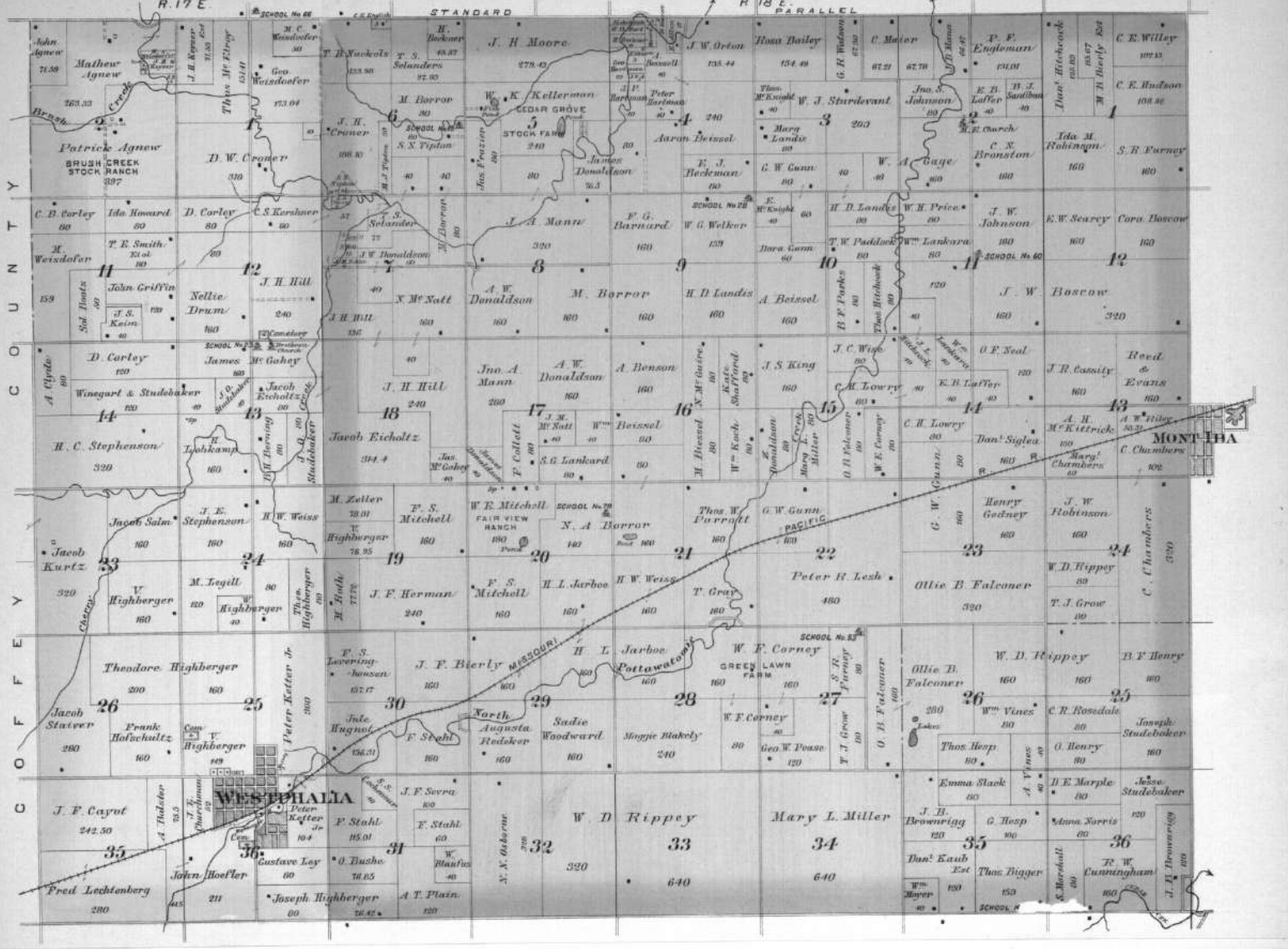
Gustave Ley

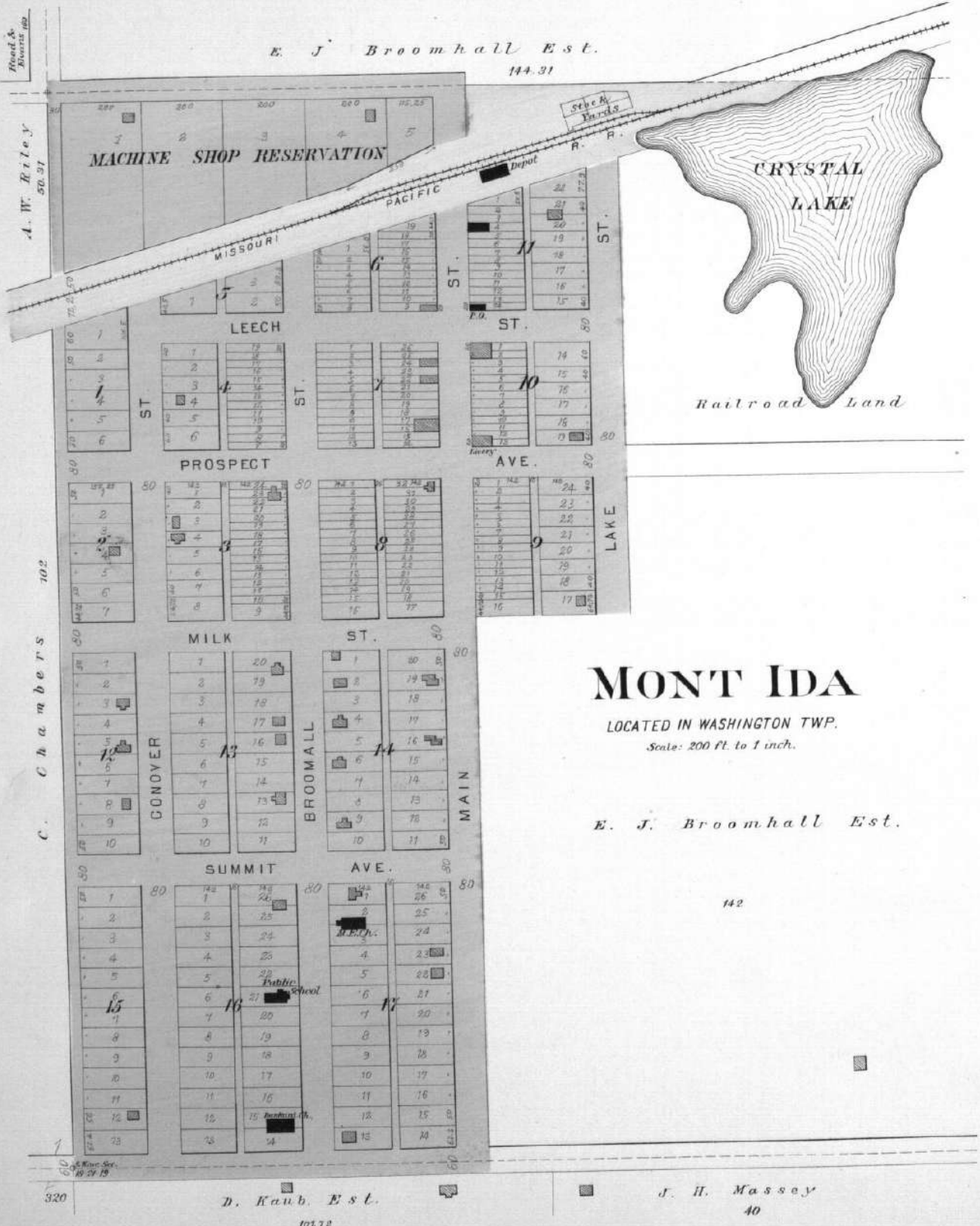
80

TOWNSHIP 21 SOUTH RANGE 17&18 EAST.

Scale 2 Inches to the Mile.

of the 6th Principal Meridian.





MONT IDA

LOCATED IN WASHINGTON TWP.

Scale: 200 ft. to 1 inch.

E. J. Broomhall Est.

142

320

D. Kaub Est.

101 72

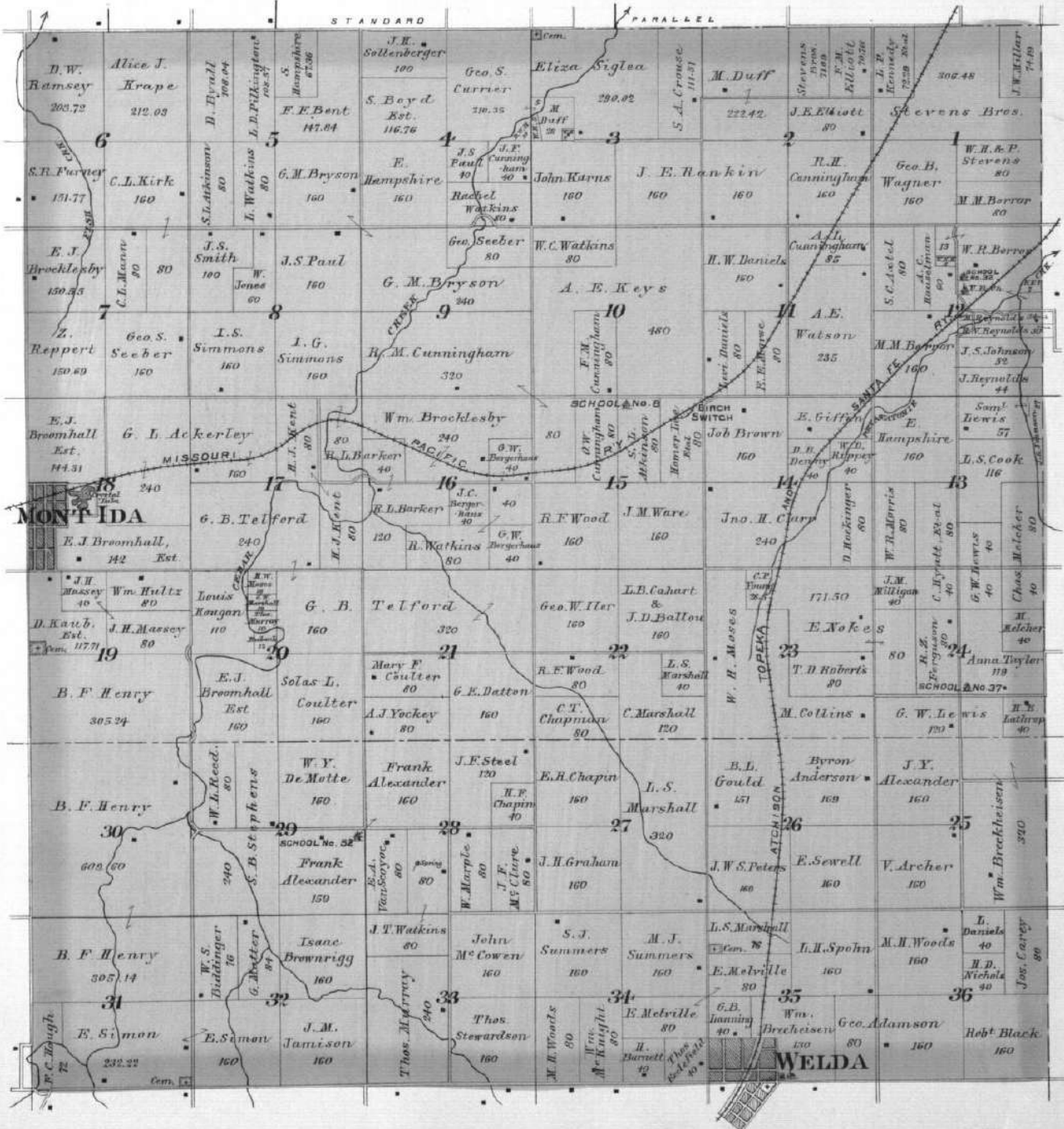
J. H. Massey

40

TOWNSHIP 21 SOUTH RANGE 19 EAST

Scale 2 Inches to the Mile.

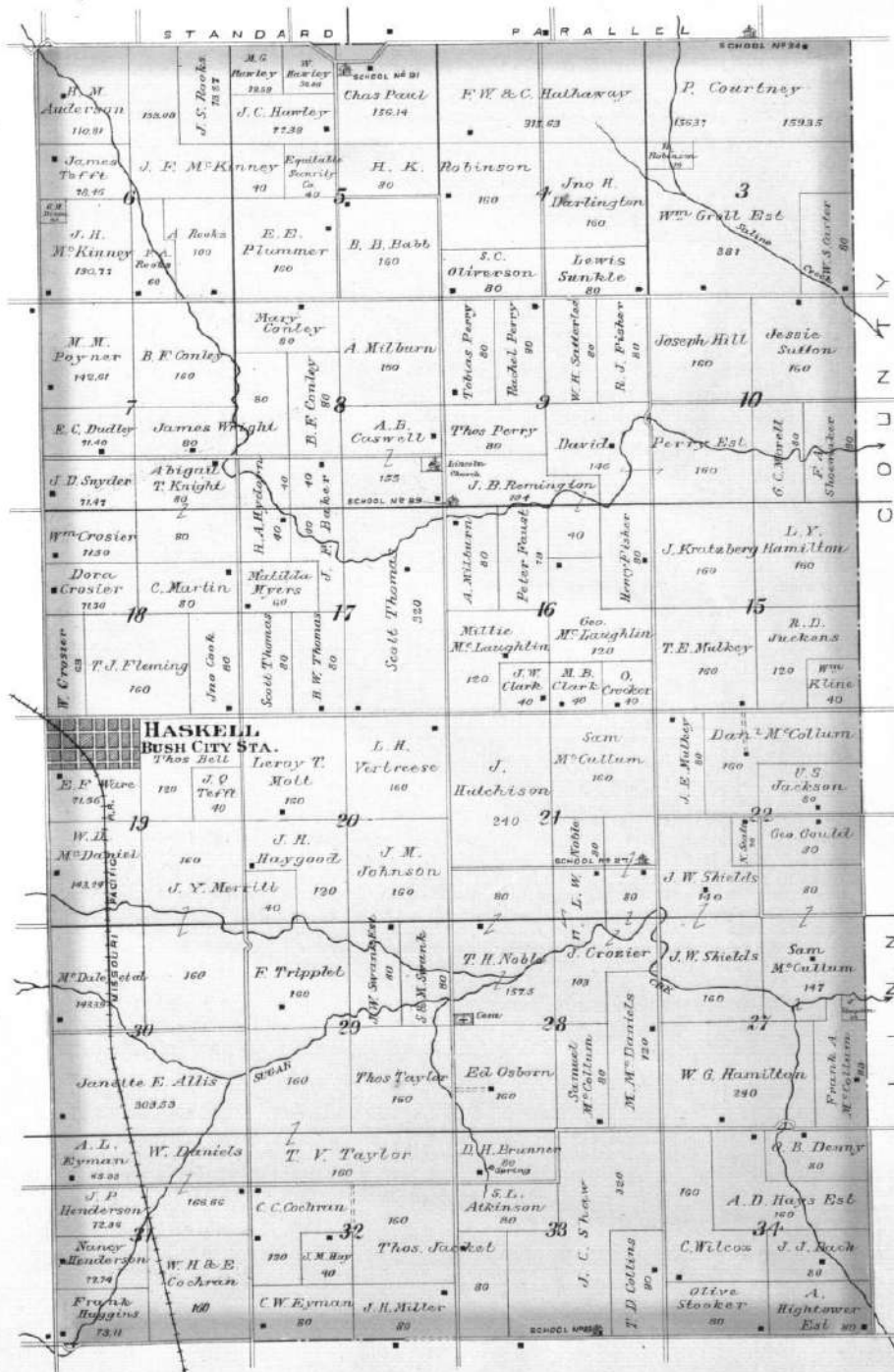
of the 6th Principal Meridian.



TOWNSHIP 21 SOUTH RANGE 21 EAST

Scale 2 Inches to the Mile.

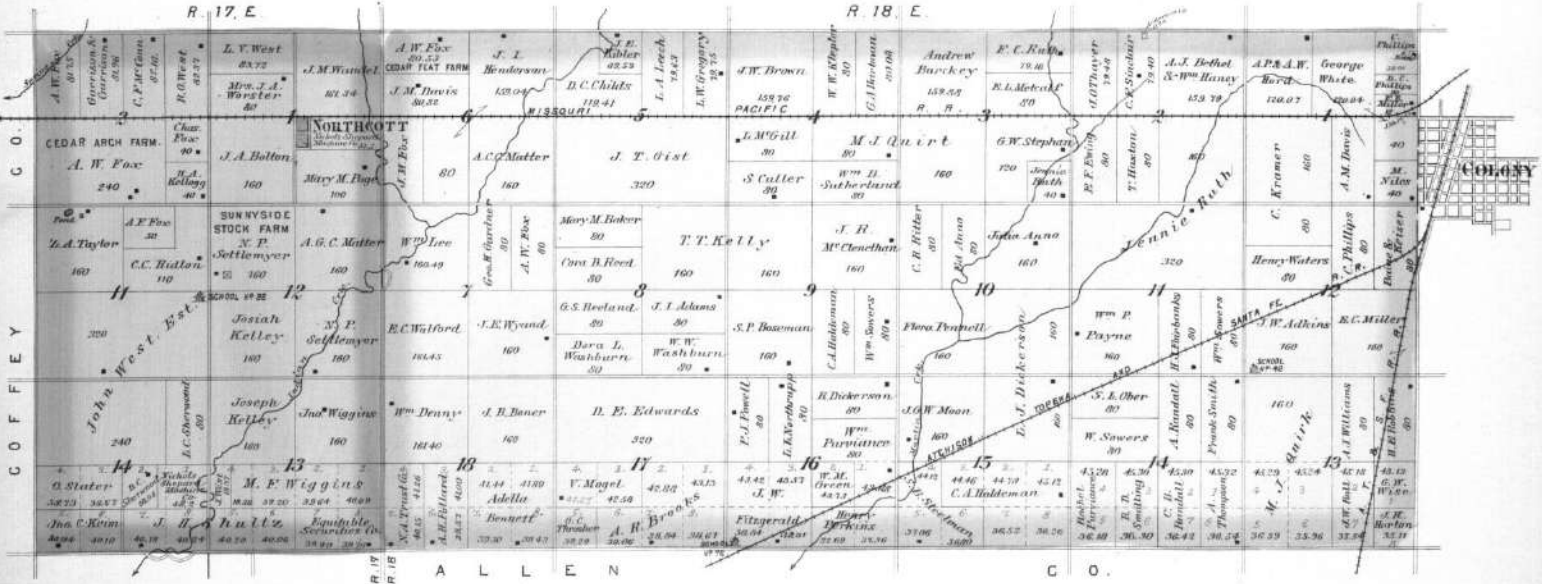
of the 6th Principal Meridian.



TOWNSHIP 23 SOUTH RANGES 17 & 18 EAST

Scale 2 Inches to the Mile

of the 5th Principal Meridian



KINCAID

LOCATED IN RICH TWP.
Scale: 300 feet to 1 inch.

G. W. Marsh

80

G. H. Baker

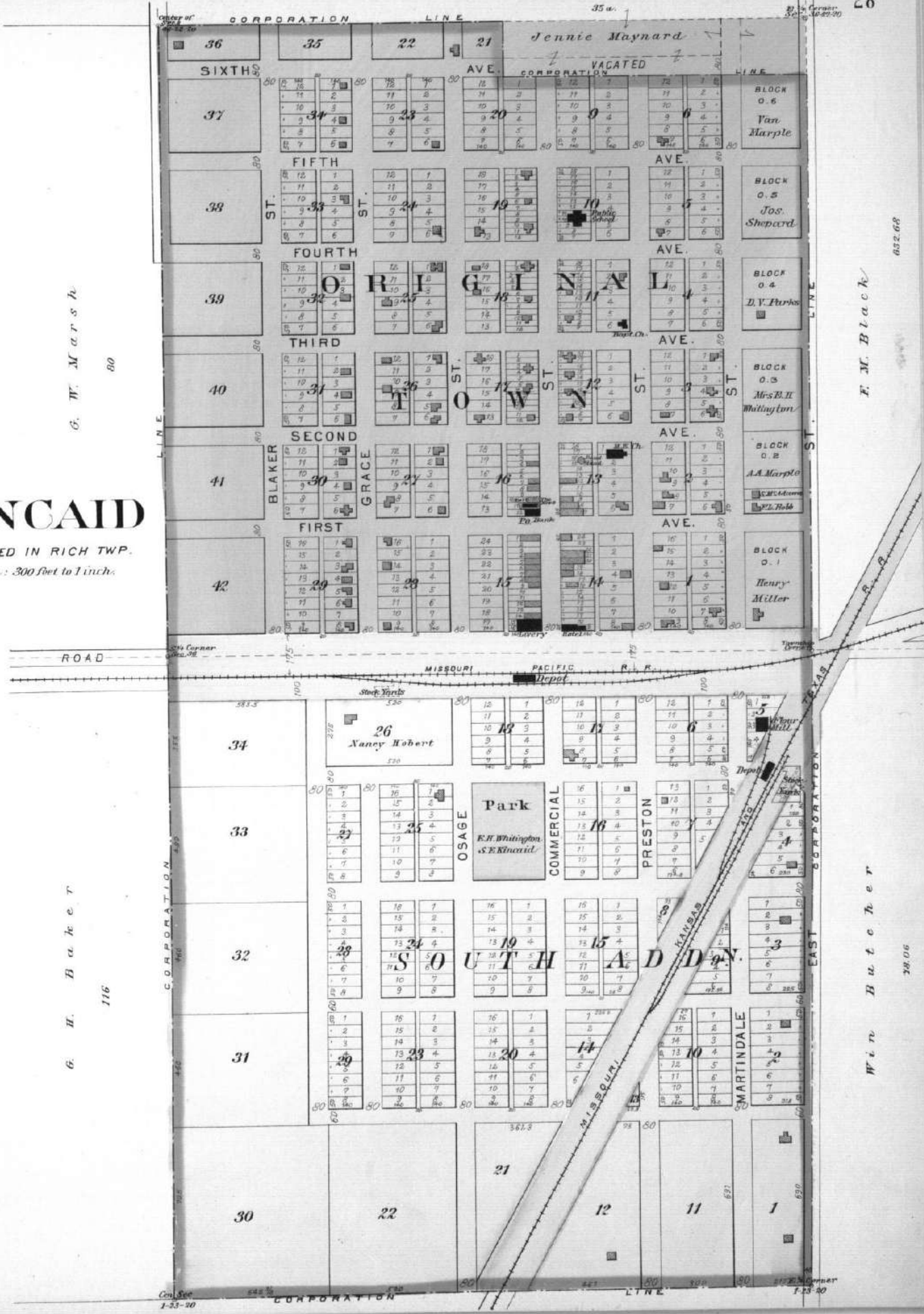
116

F. M. Black

632.68

W. B. Butcher

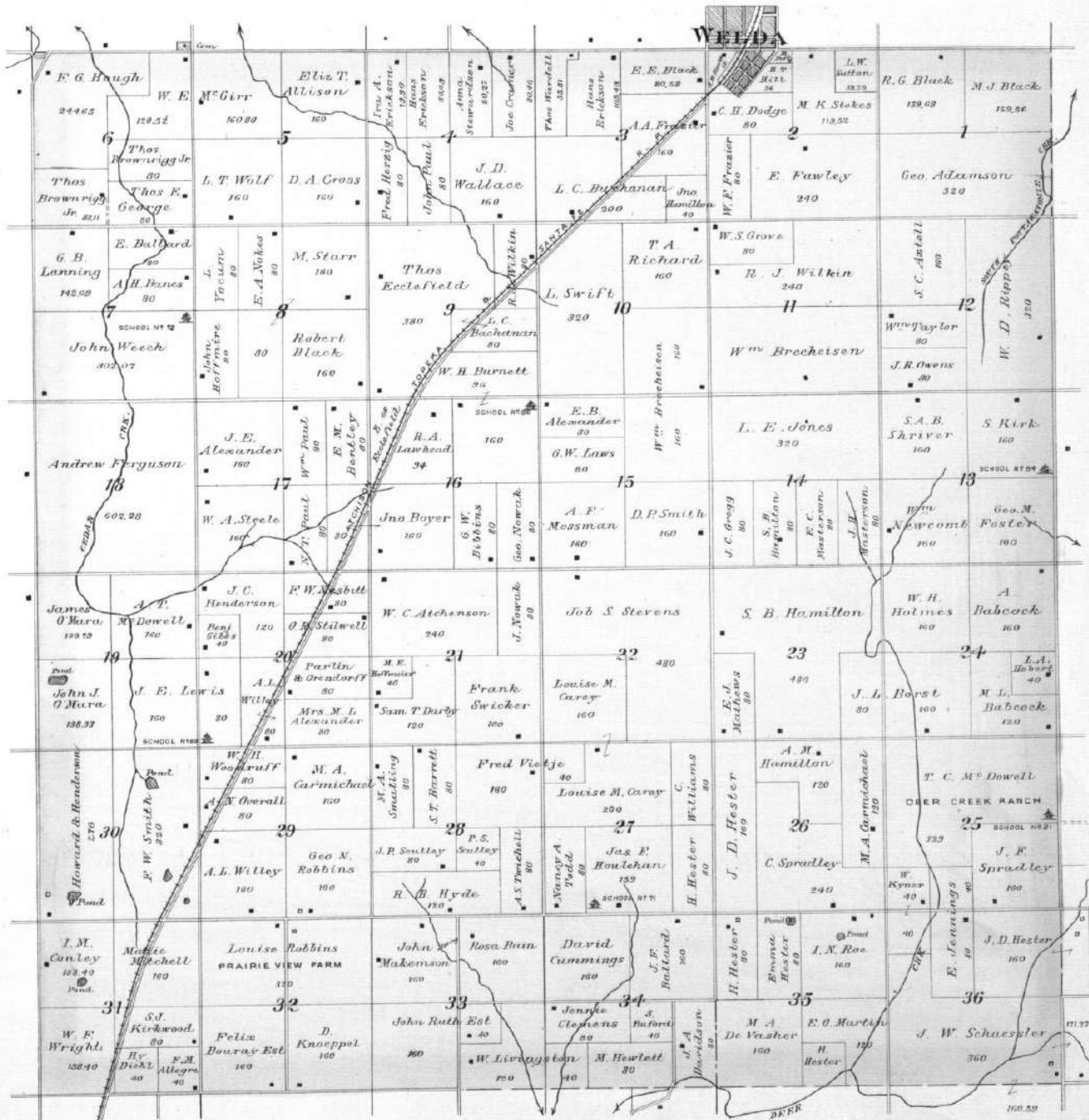
38.06



TOWNSHIP 22 SOUTH RANGE 19 EAST.

Scale 2 Inches to the Mile.

of the 6th Principal Meridian.



HASKELL

BUSH CITY STATION
LINCOLN TWP.

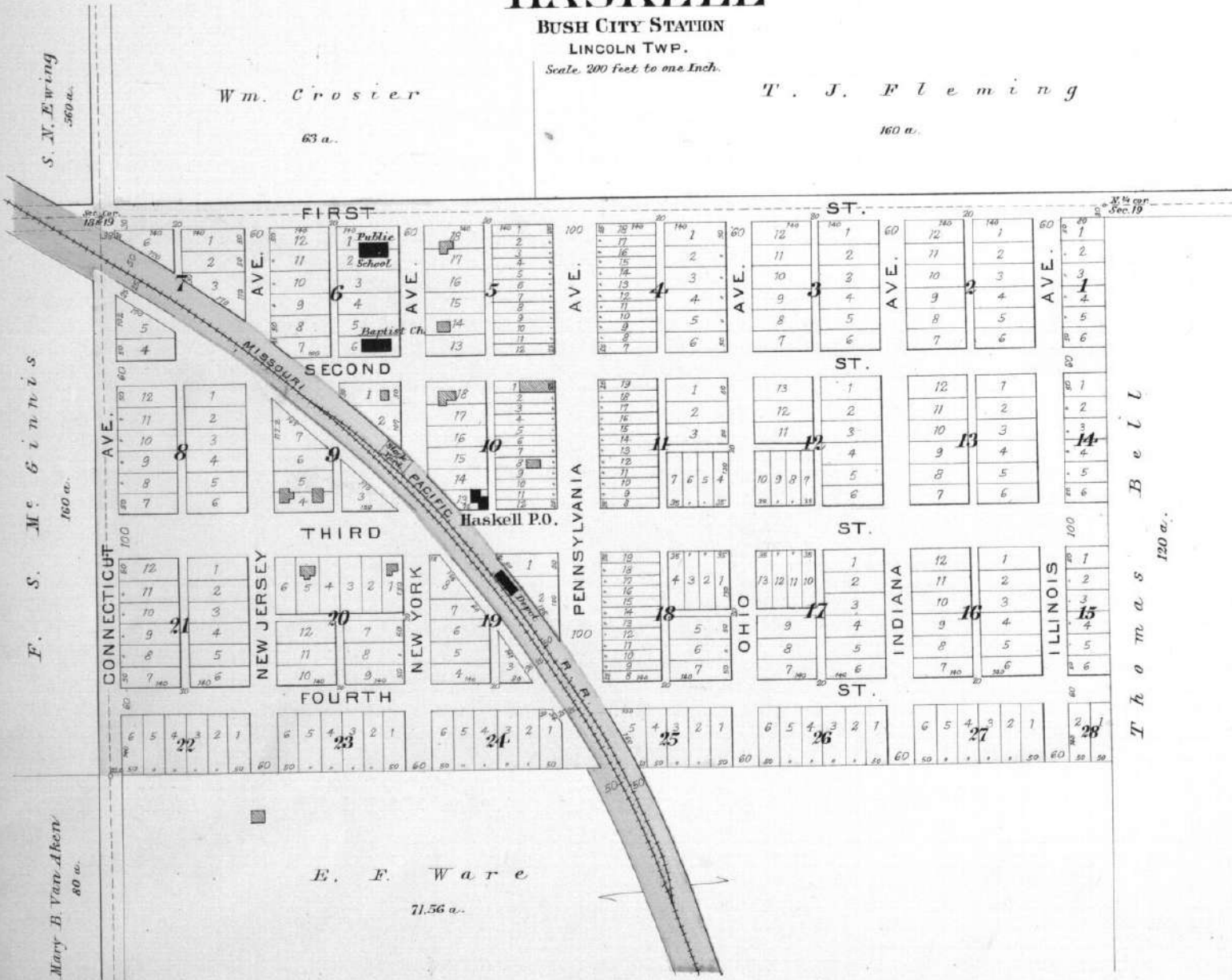
Scale. 200 feet to one Inch.

Wm. Croster

63 a.

T. J. Fleming

160 a.



E. F. Ware

71.56 a.

S. M. Ewing
560 a.

F. S. M. & I. N. I. S.
160 a.

Mary B. Van Aken
80 a.

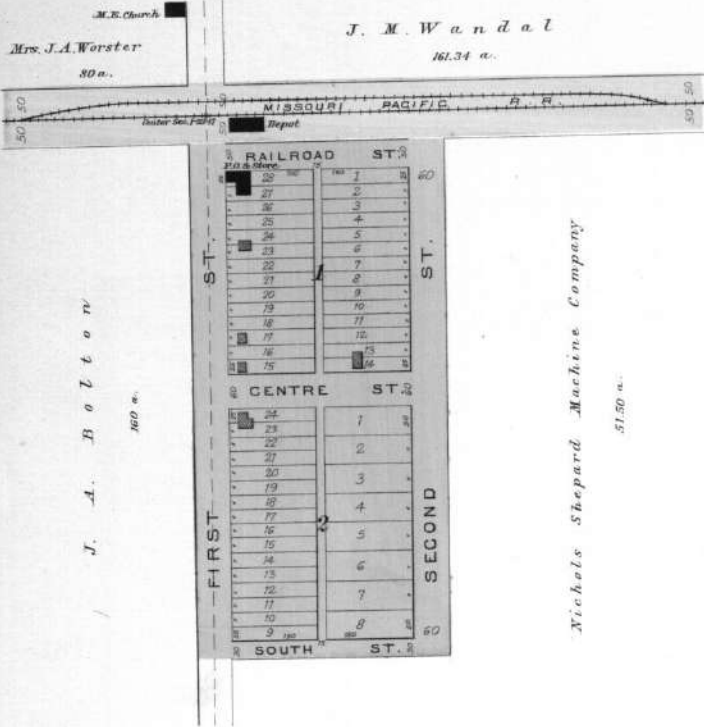
1/4 Sec. 19

T. H. O. M. A. S. B. E. L.
120 a.

NORTHCOTT

INDIAN CREEK TWP.

Scale 150 Feet to one Inch.



SELMA

RICH TWP.

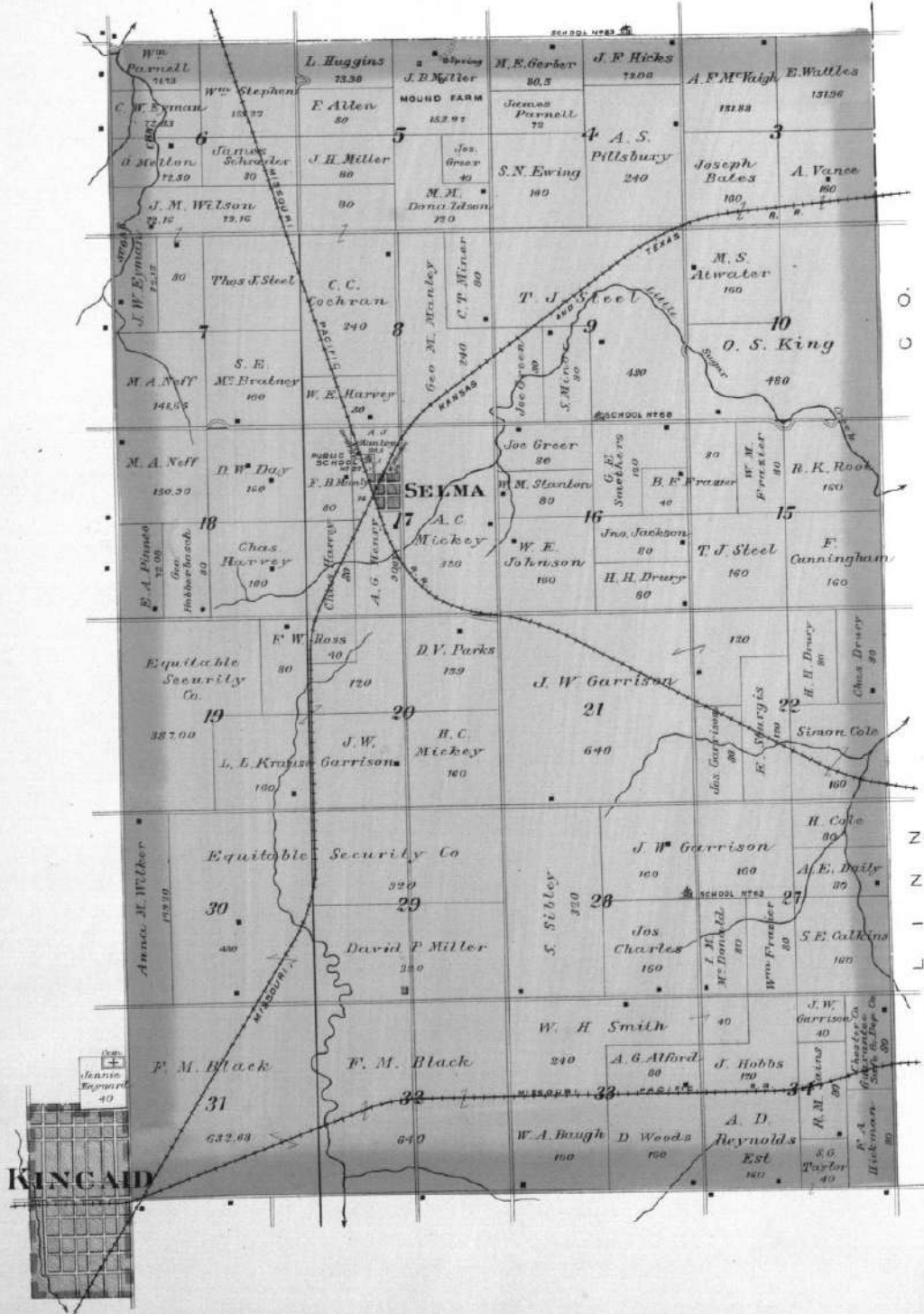
Scale 200 Feet to one Inch.



TOWNSHIP 22 SOUTH RANGE 21 EAST

Scale 2 Inches to the Mile.

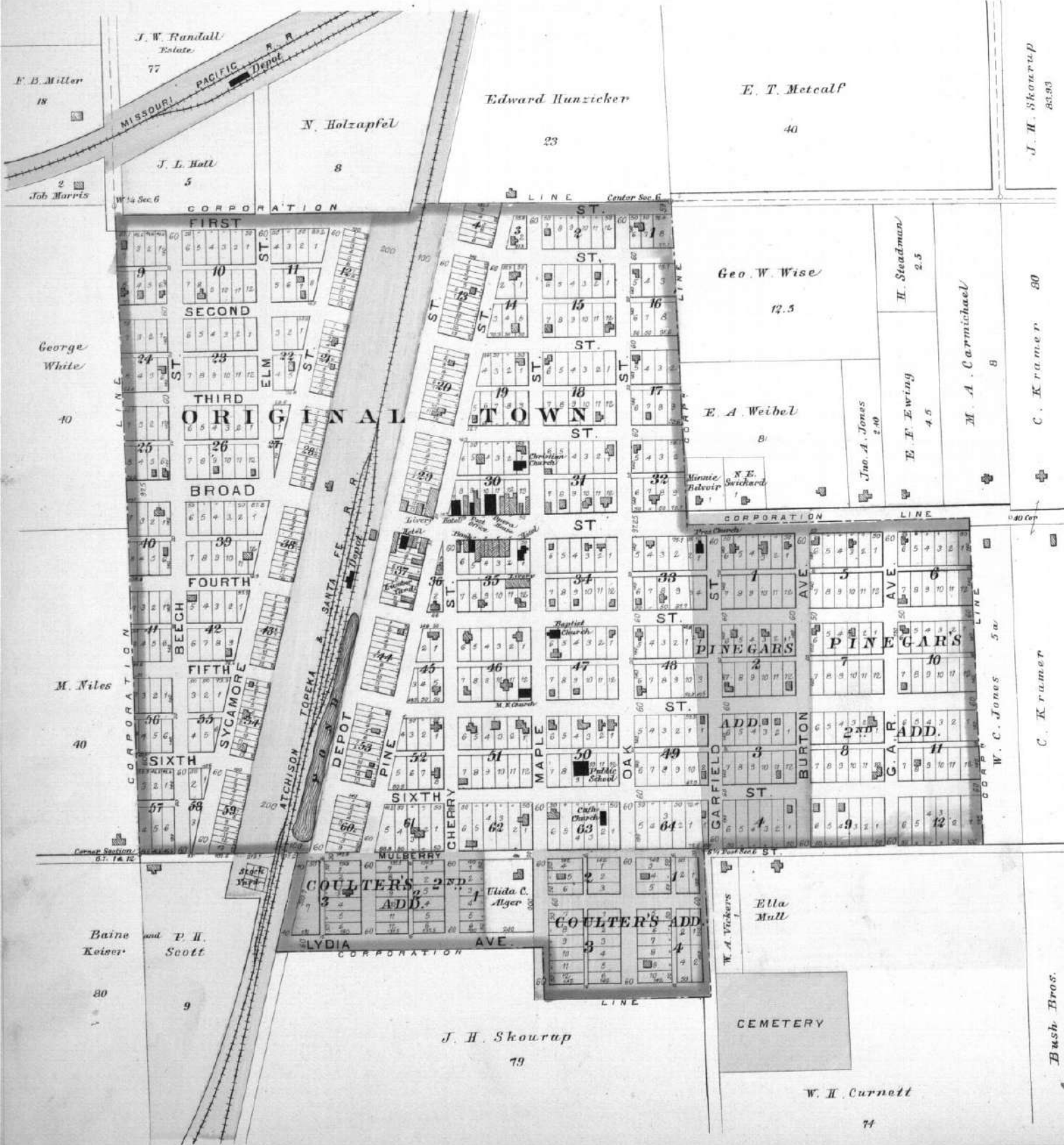
of the 6th Principal Meridian.



COLONY

LOCATED IN OZARK TWP.

Scale 300 ft. to 1 inch



E. B. Miller
18

J. I. Hall
5

George White
40

M. Niles
40

Baine and P. H. Scott
80

9

J. W. Randall
Estate.
77

N. Holzapel
8

Edward Hunzicker
23

E. T. Metcalf
40

Geo. W. Wise
12.5

E. A. Weibel
8

M. Niles
40

J. H. Skourup
79

CEMETERY

W. H. Burnett
74

J. H. Skourup
85.93

C. Kramer
80

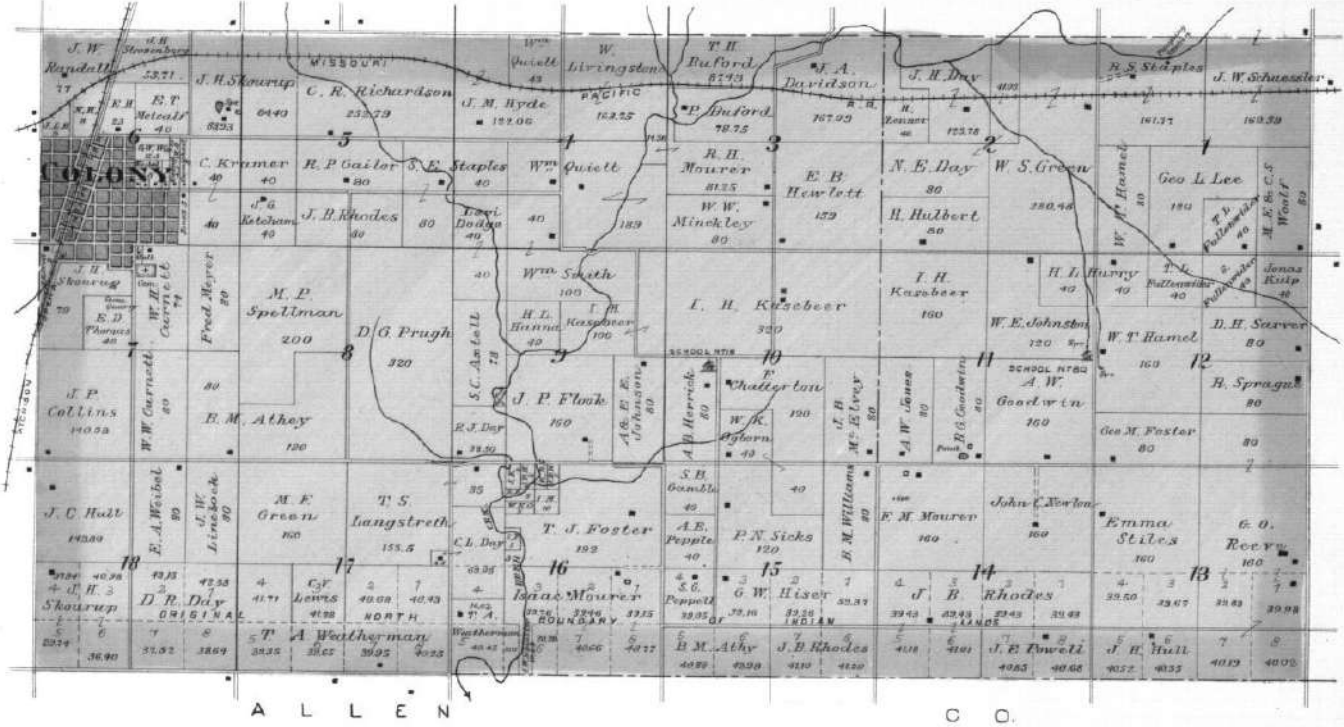
C. Kramer
50

Bush Bros.

TOWNSHIP 23 SOUTH RANGE 19 EAST

Scale 2 Inches to the Mile.

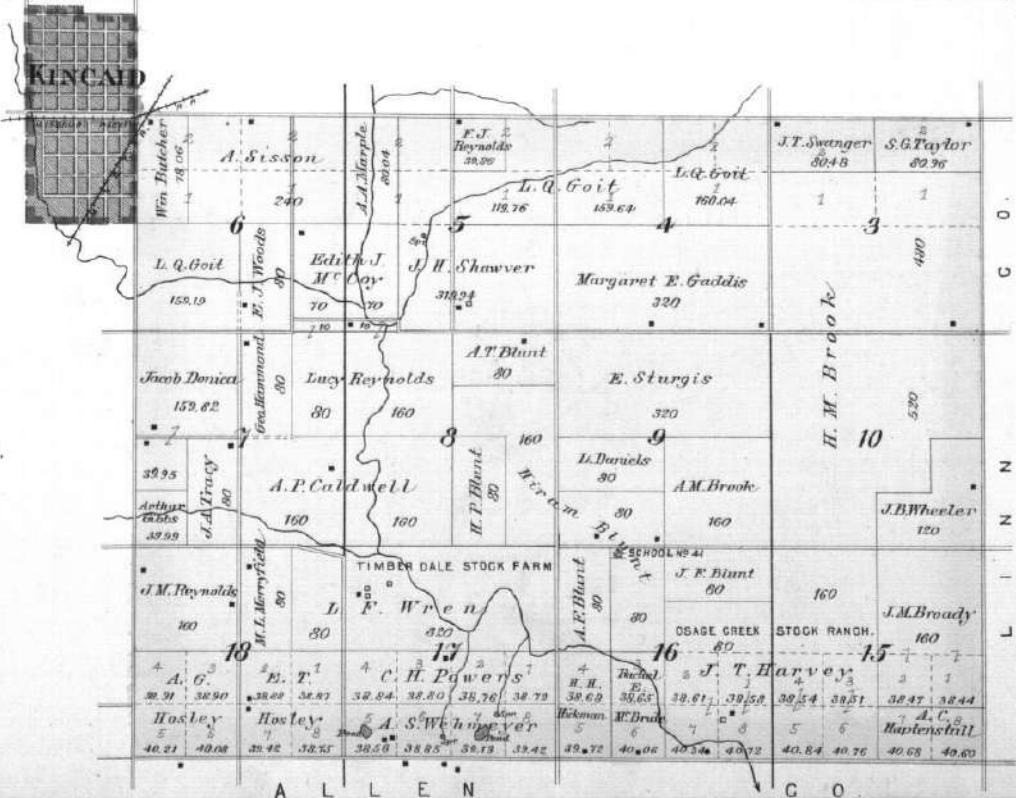
of the 6th Principal Meridian.



TOWNSHIP 23 SOUTH RANGE 21 EAST

Scale 2 Inches to the Mile.

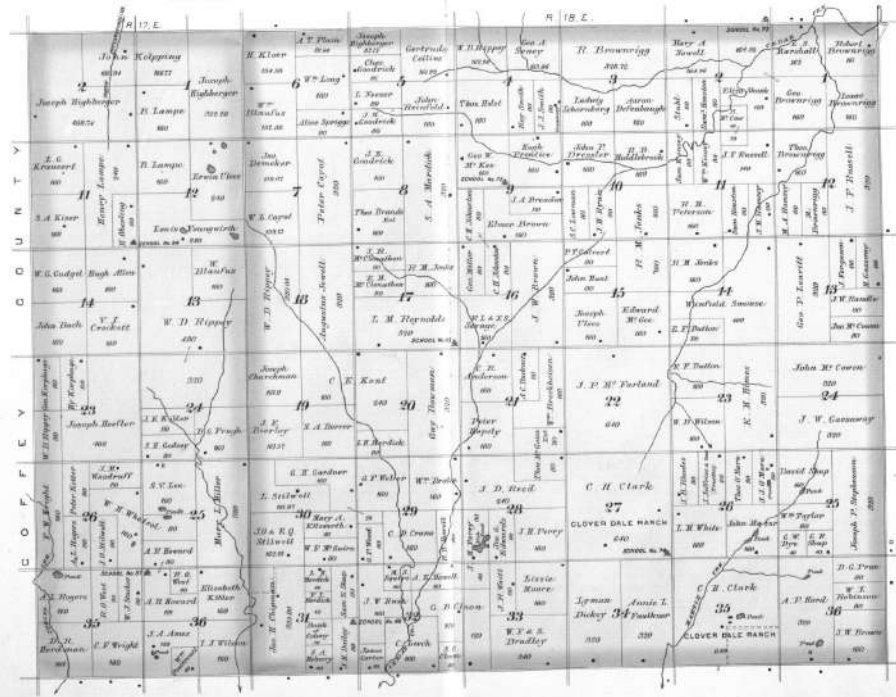
of the 6th Principal Meridian.



TOWNSHIP 22 SOUTH RANGES 17 & 18 EAST

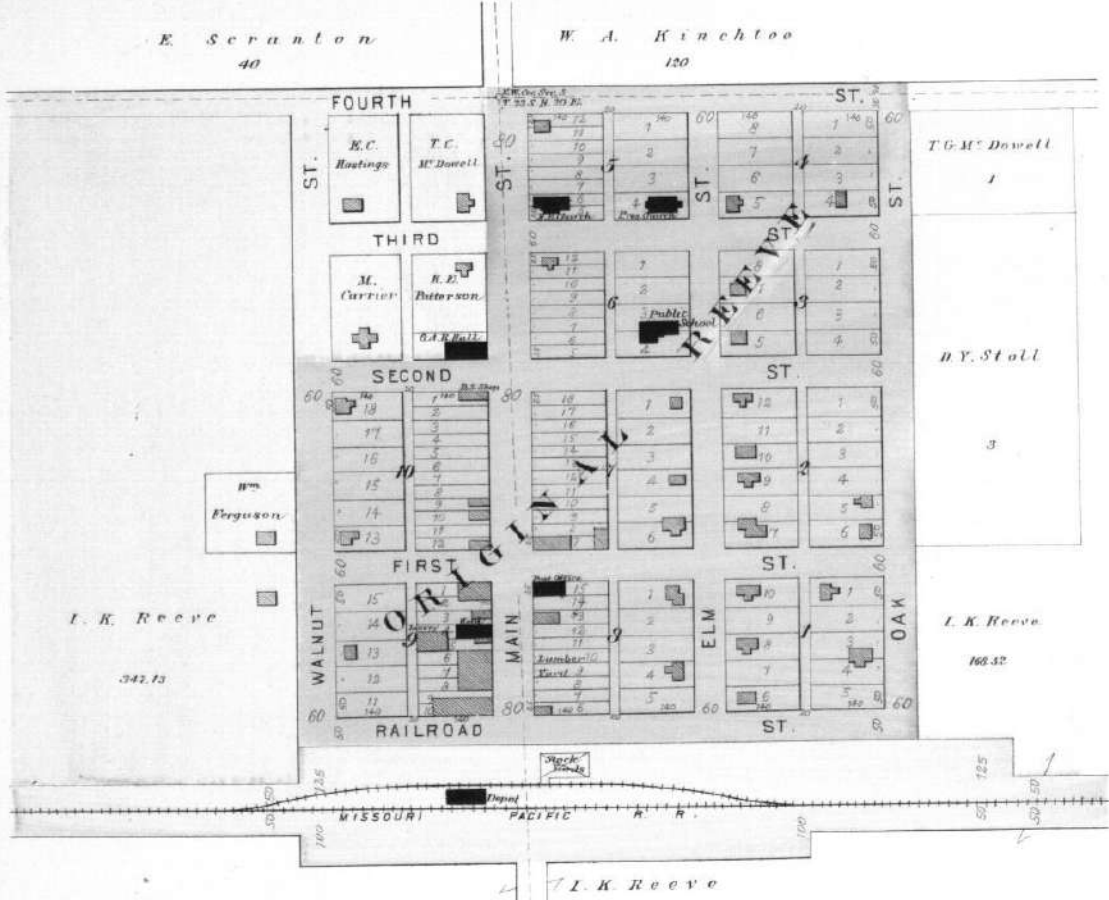
Scale 2 Inches to the Mile.

of the 6th Principal Meridian



LONE ELM

Post Office & Station.
REEVE PLAT.
 Scale: 200 ft. to 1 in.



TOWNSHIP 23 SOUTH RANGE 20 EAST

Scale 2 Inches to the Mile.

of the 6th Principal Meridian.

