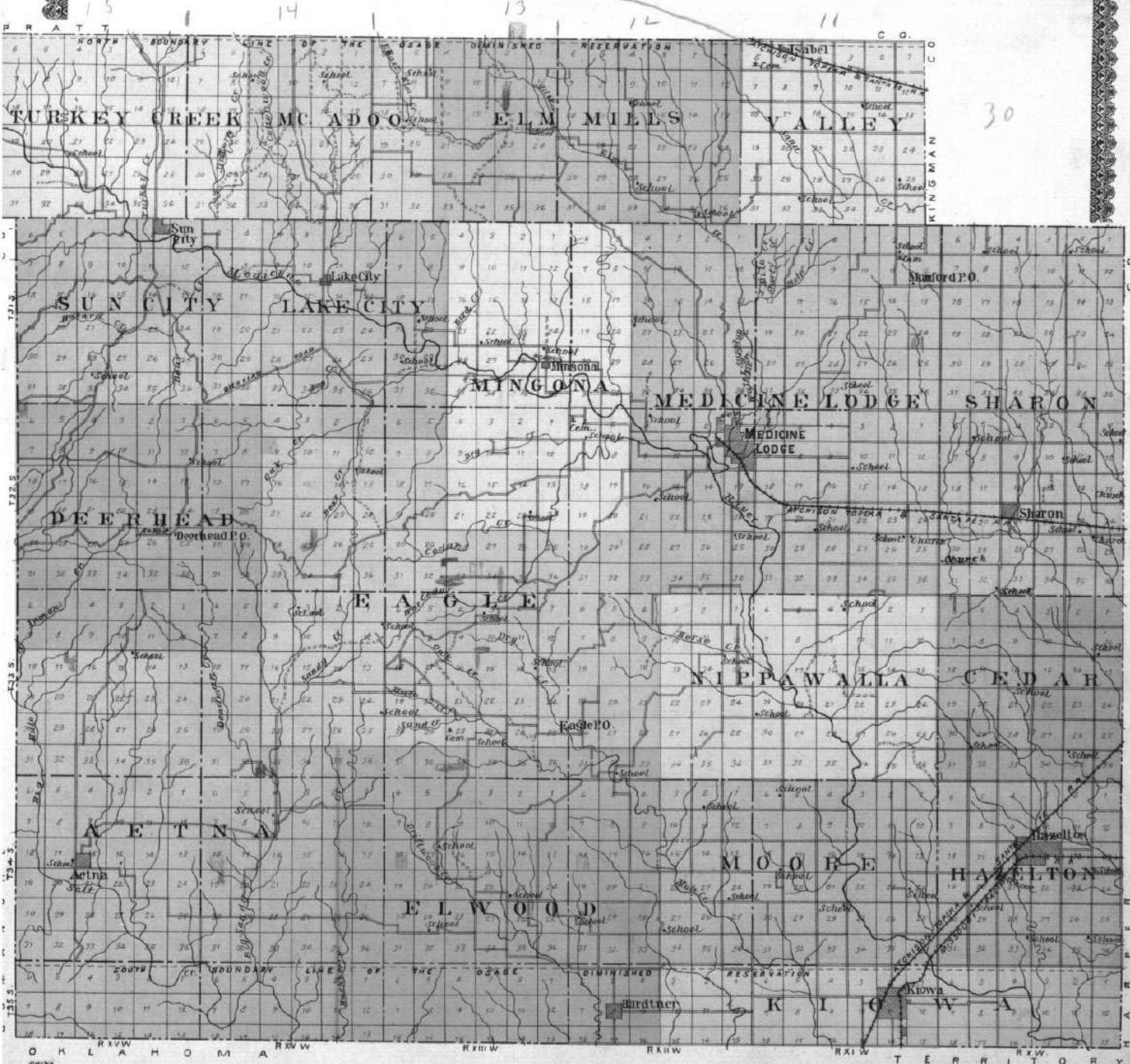


THE
OUTLINE MAP OF
BARBER COUNTY
KANSAS

Scale $\frac{3}{8}$ of inch to 1 Mile



30

31

32

33

34

35

HAZELTON

T34S RxW

Sheet No. 71. of 100.

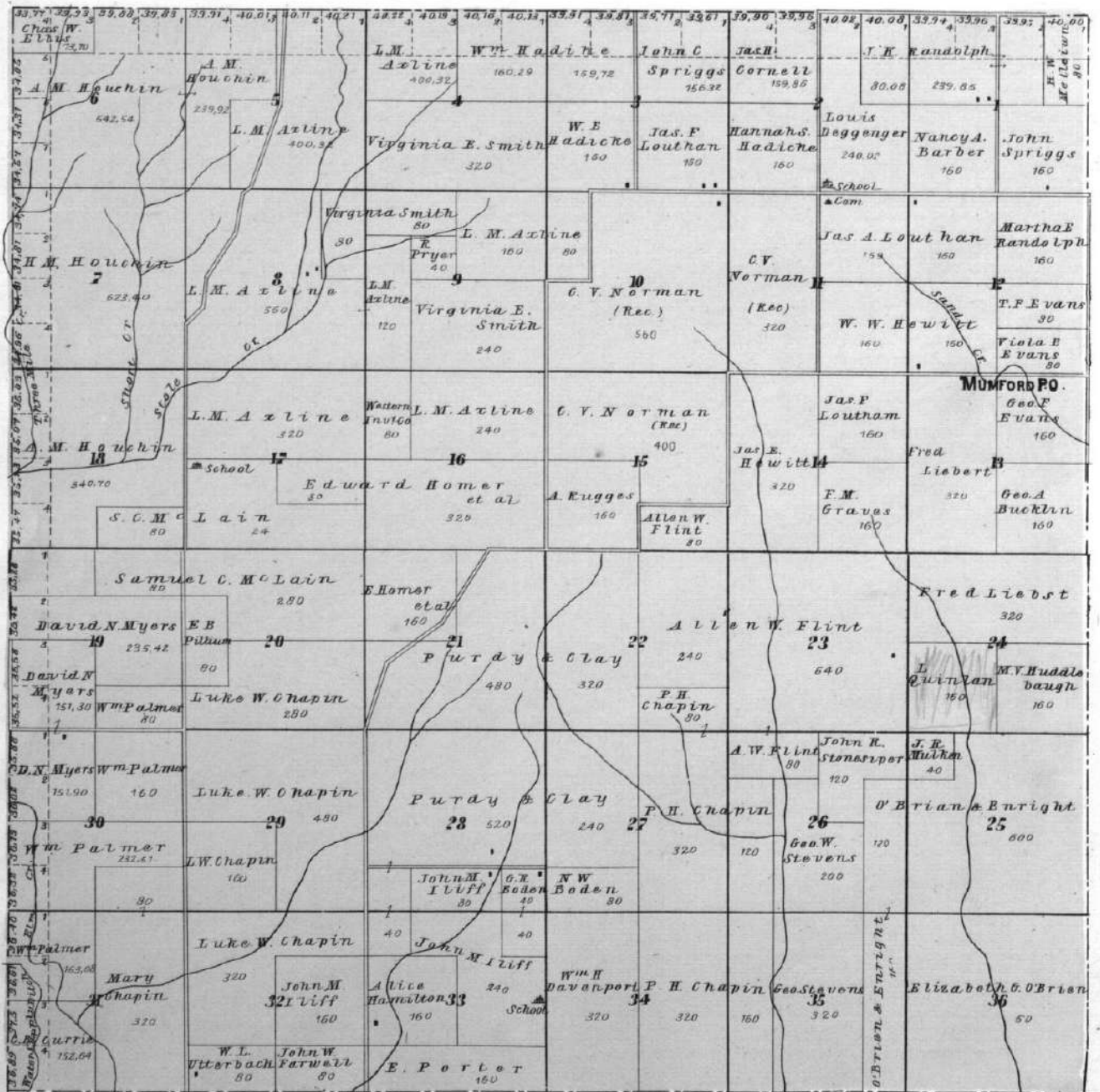


MINGONA
T34S RxW
J. E. TROOPER

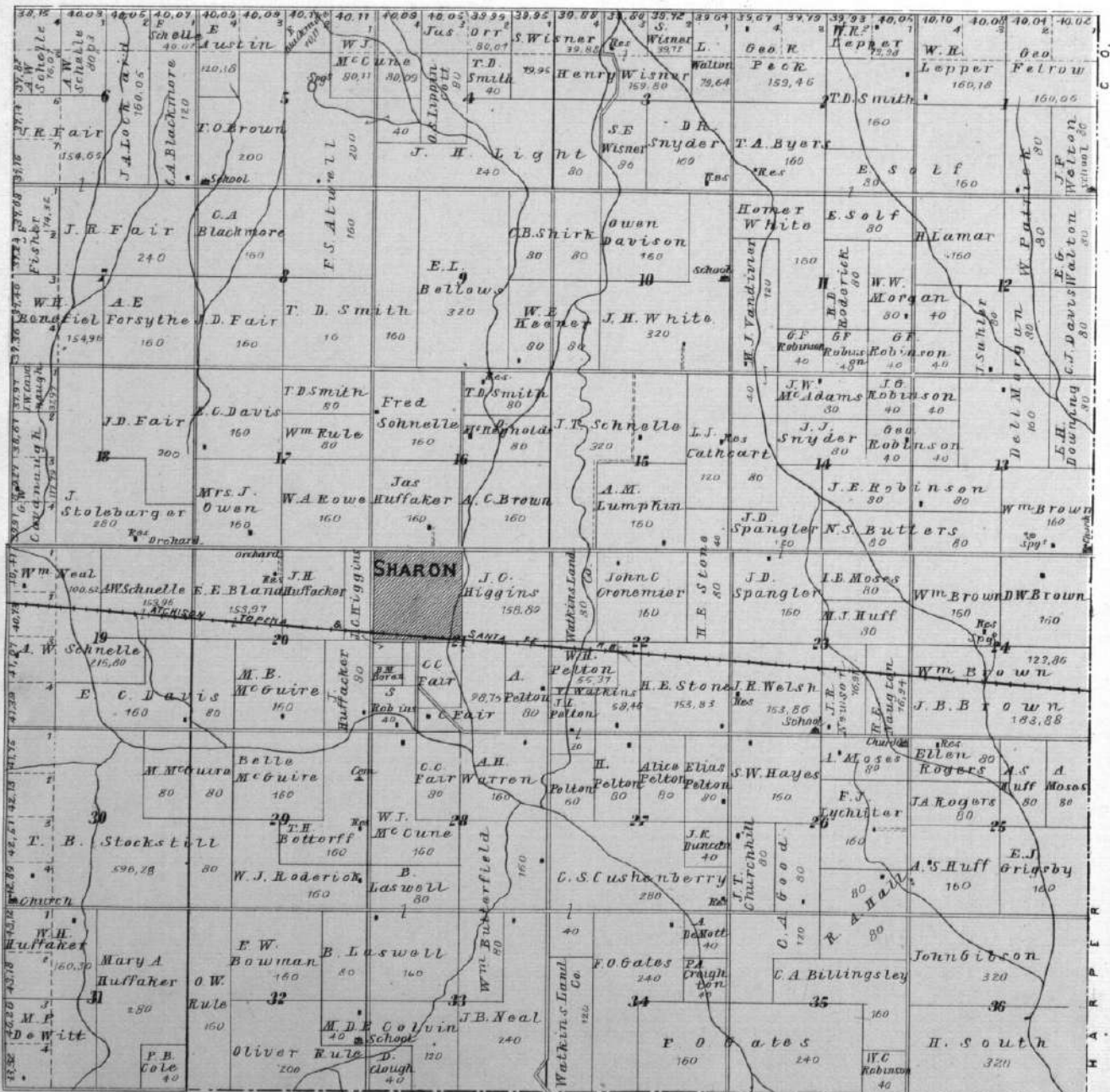
1	2	3	4
5	6	7	8
9	10	11	12
13	14	15	16
17	18	19	20
21	22	23	24
25	26	27	28
29	30	31	32
33	34	35	36
37	38	39	40
41	42	43	44
45	46	47	48
49	50	51	52
53	54	55	56
57	58	59	60
61	62	63	64
65	66	67	68
69	70	71	72
73	74	75	76
77	78	79	80
81	82	83	84
85	86	87	88
89	90	91	92
93	94	95	96
97	98	99	100
101	102	103	104
105	106	107	108
109	110	111	112

FRANKLIN AV. PUBLIC SQUARE
WASHINGTON AV.
MONTPELIER AV.
T. H. COOPER

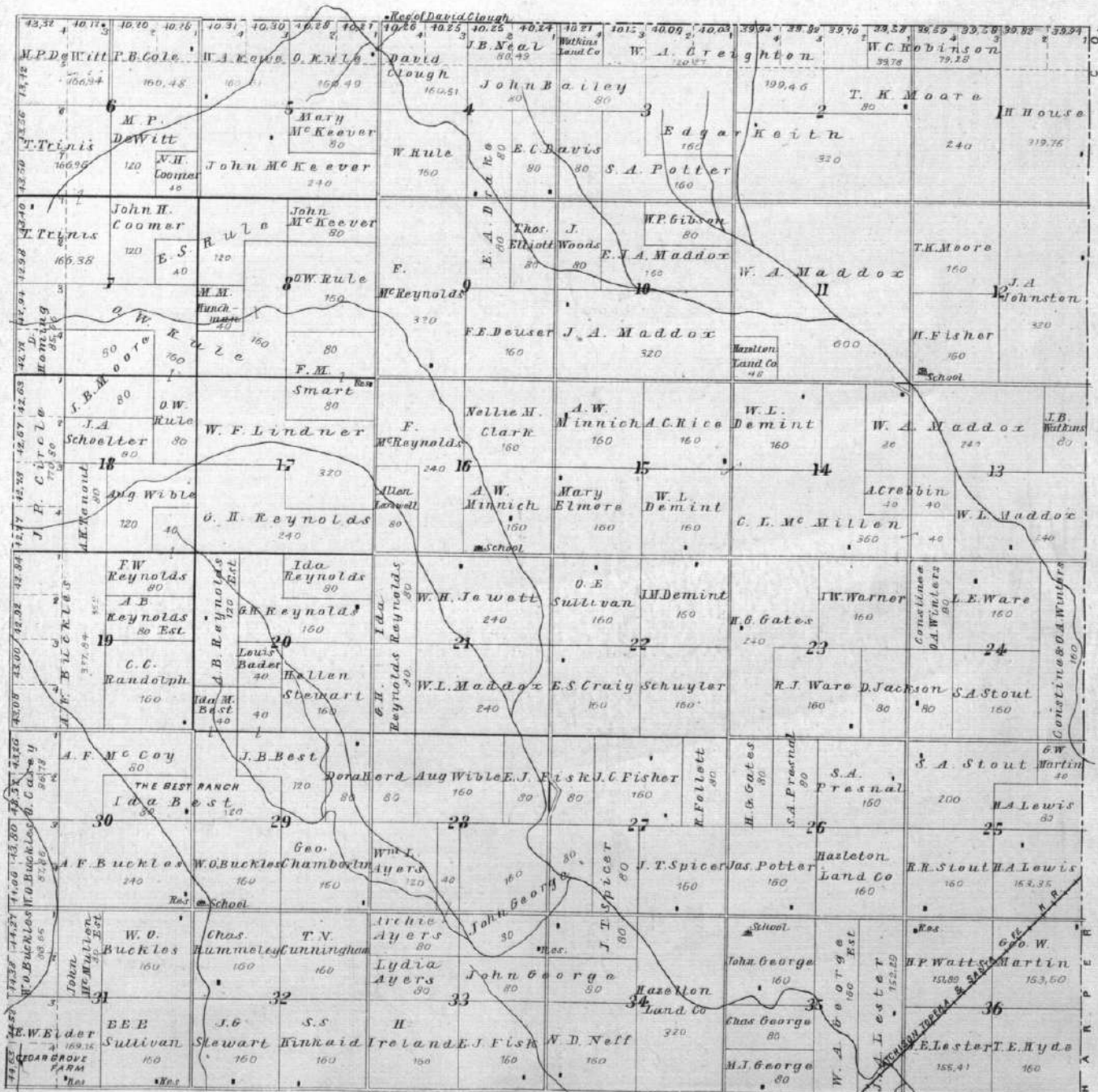
MAP OF
TOWNSHIP 31 S. RANGE XI W.
 OF THE 6TH P. M.

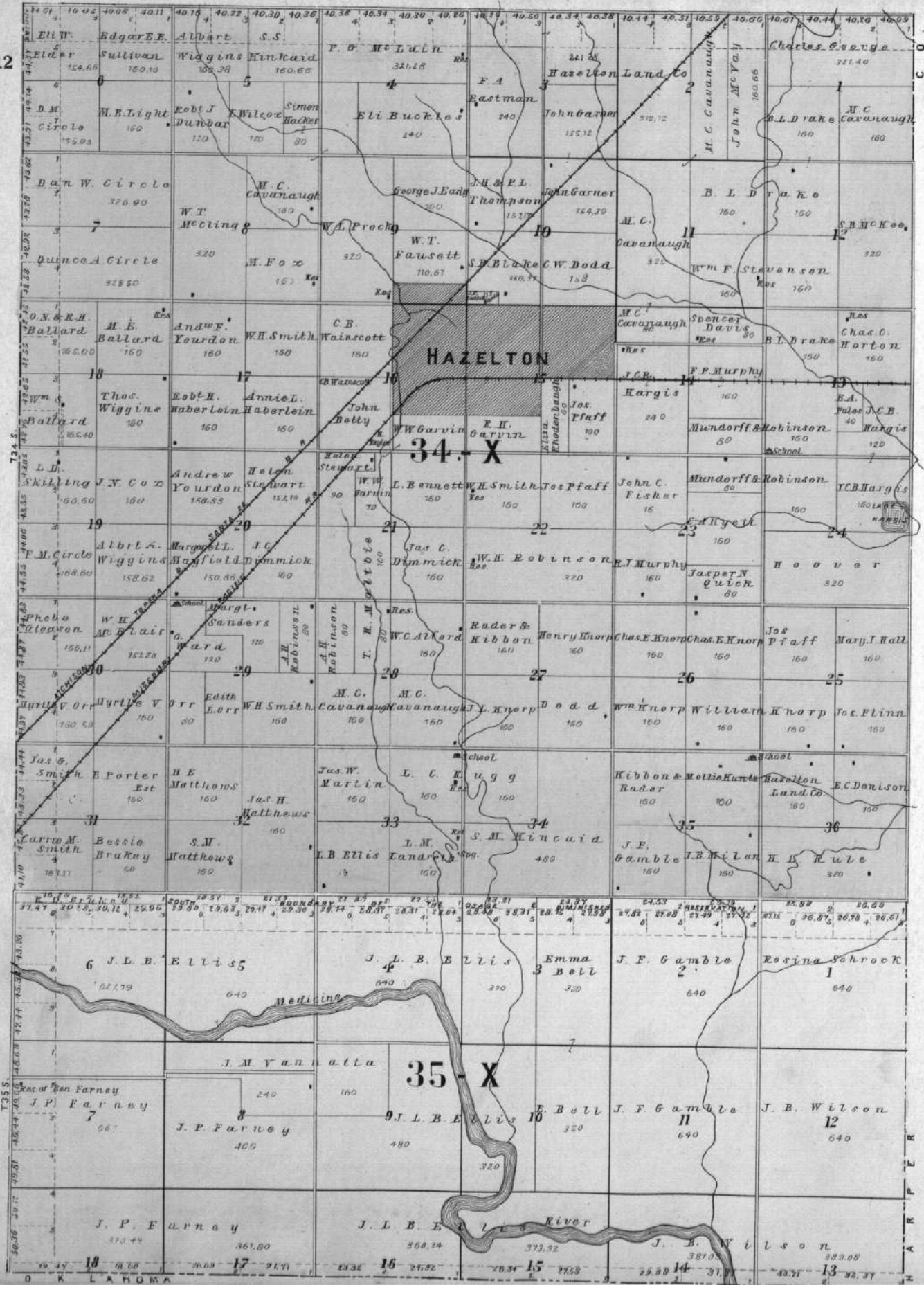


MAP OF
TOWNSHIP 32 S. RANGE X W.
 OF THE 6TH P.M.



MAP OF
TOWNSHIP 33 S. RANGE X W.
 OF THE 6TH P. M.





T355

18 17 16 15 14 13

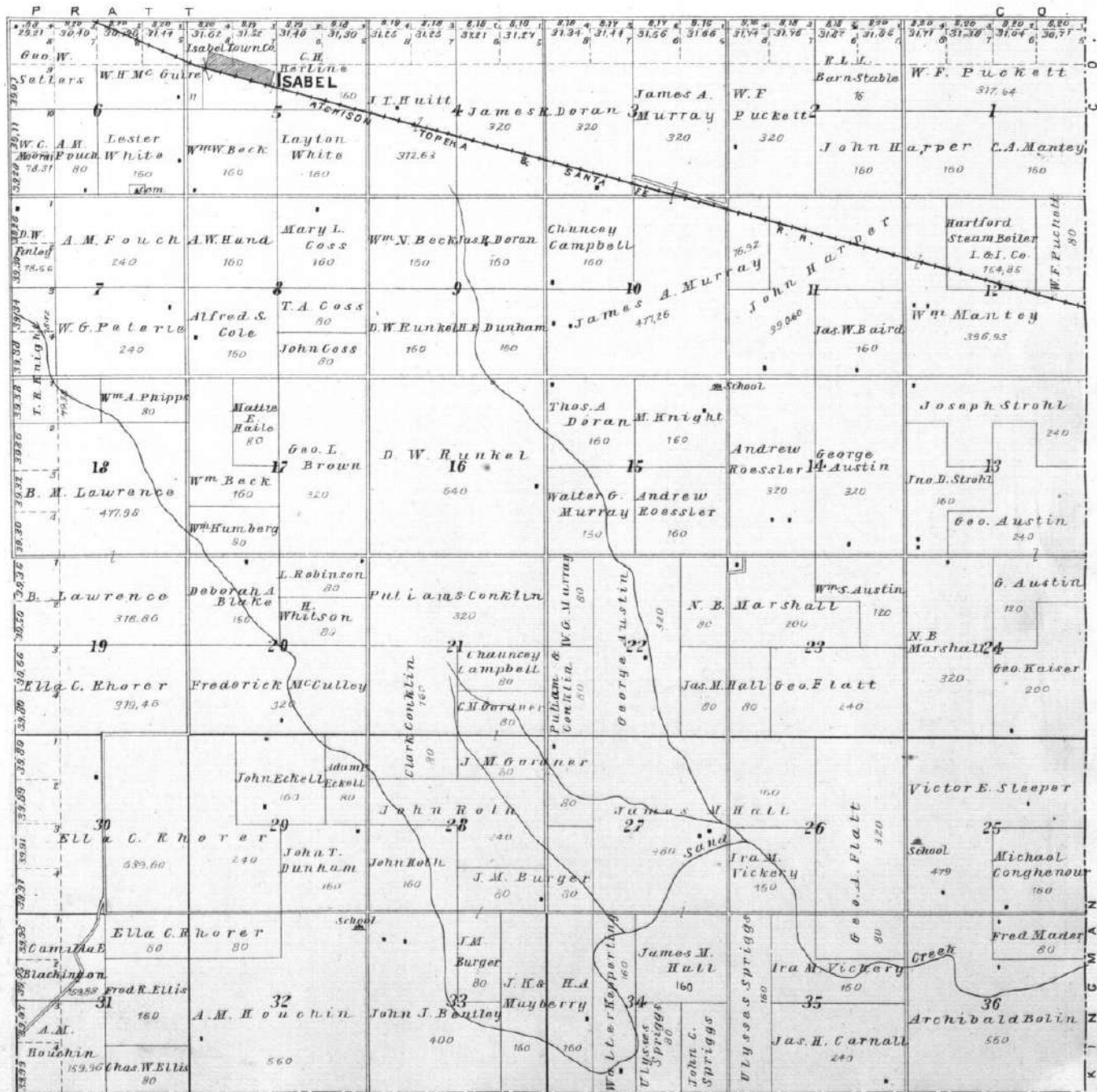
O K LA FOMA

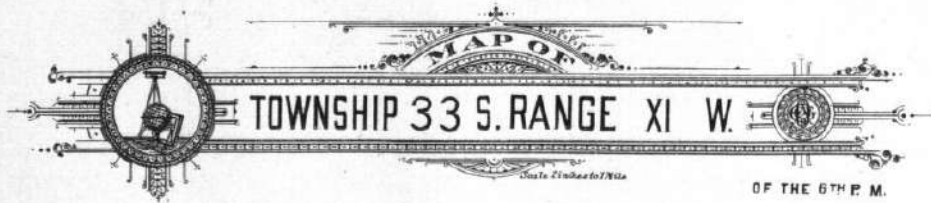


MAP OF

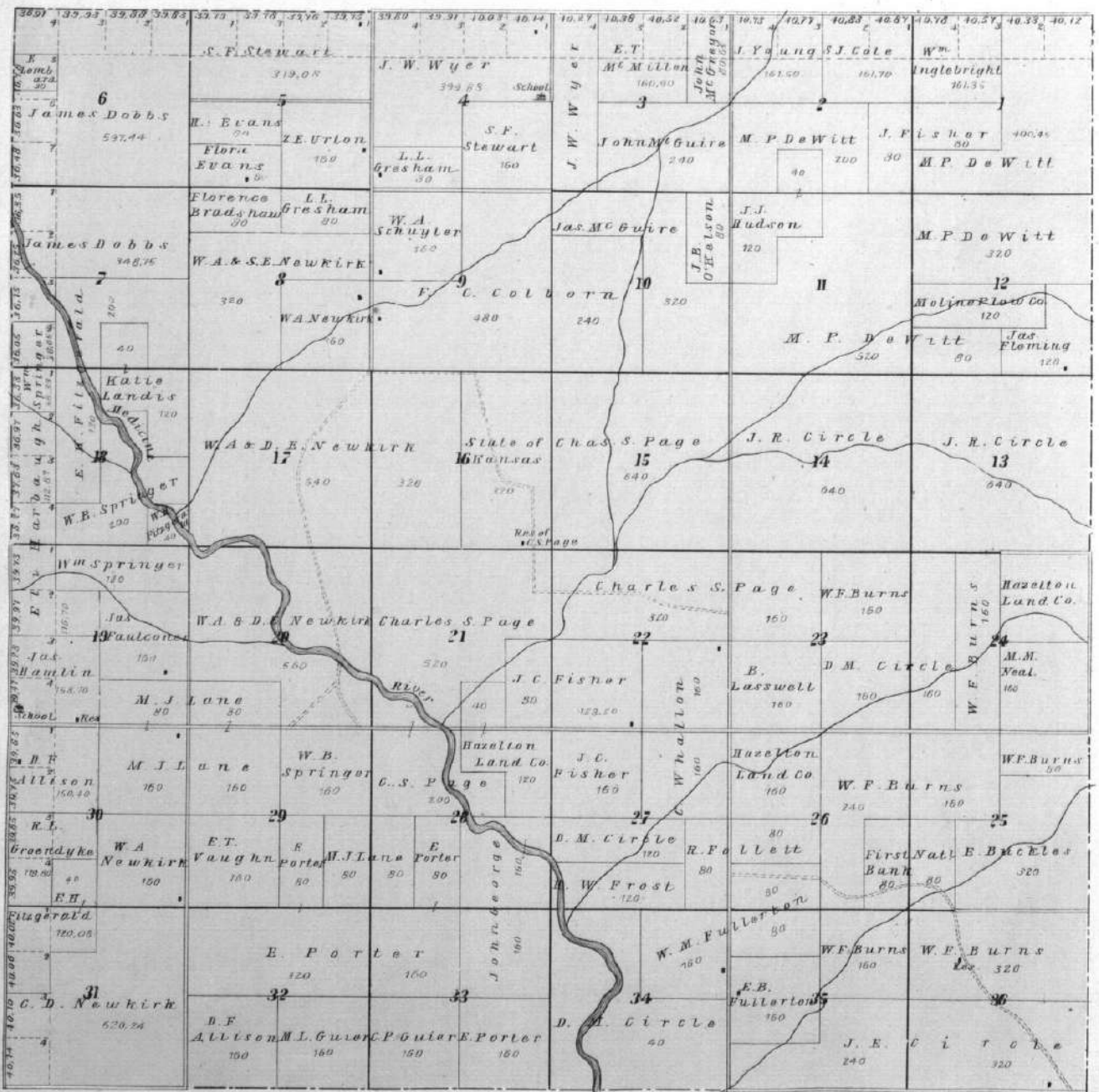
TOWNSHIP 30 S. RANGE XI W.

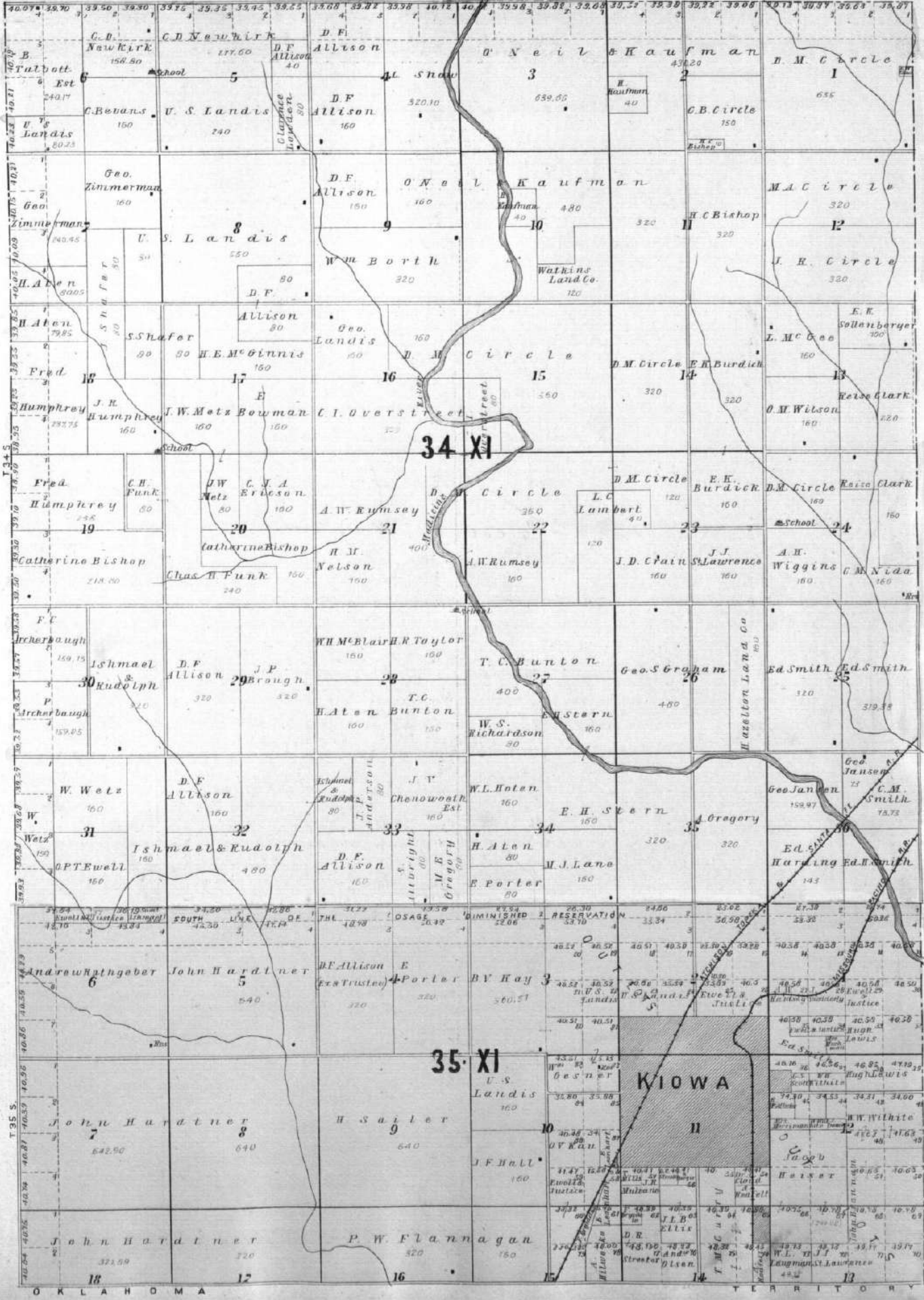
 OF THE 6TH P. M.





MAP OF
TOWNSHIP 33 S. RANGE XI W.
State of Indiana
OF THE 6TH P. M.





34 XI

35 XI

KIOWA

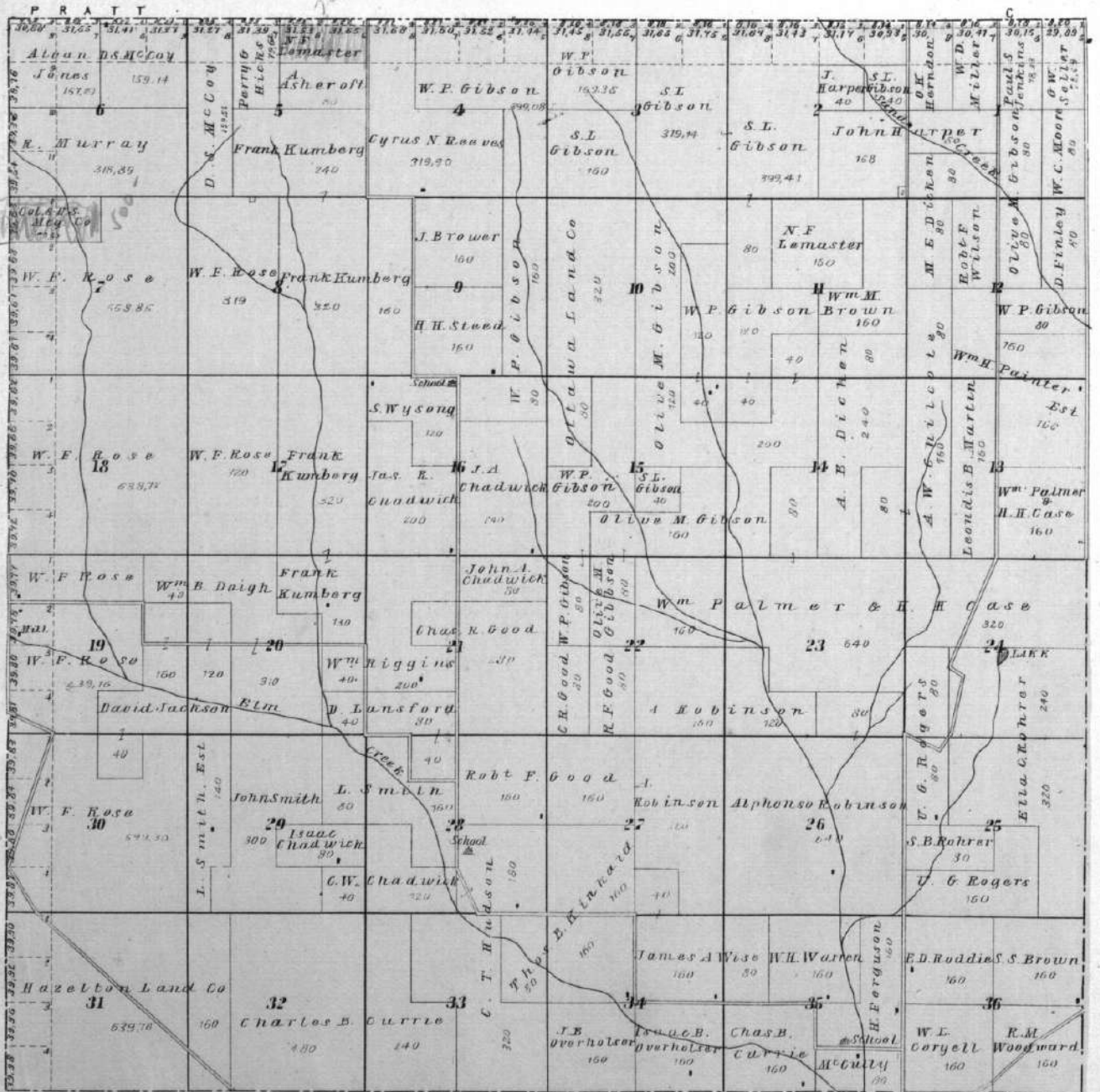


MAP OF

TOWNSHIP 30S. RANGE XII W.

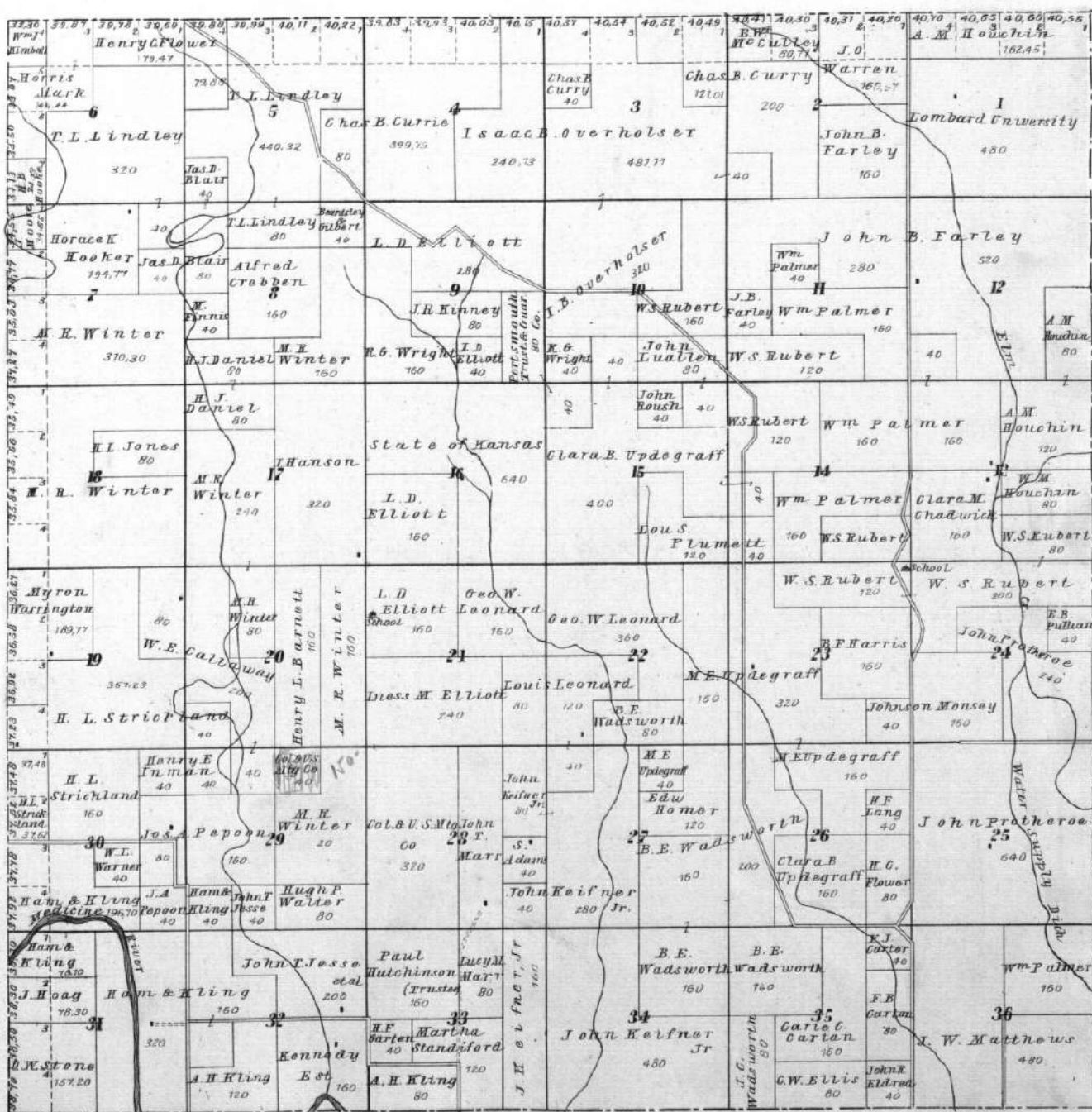
Under the 21st Meridian, 1854

OF THE 6TH P. M.



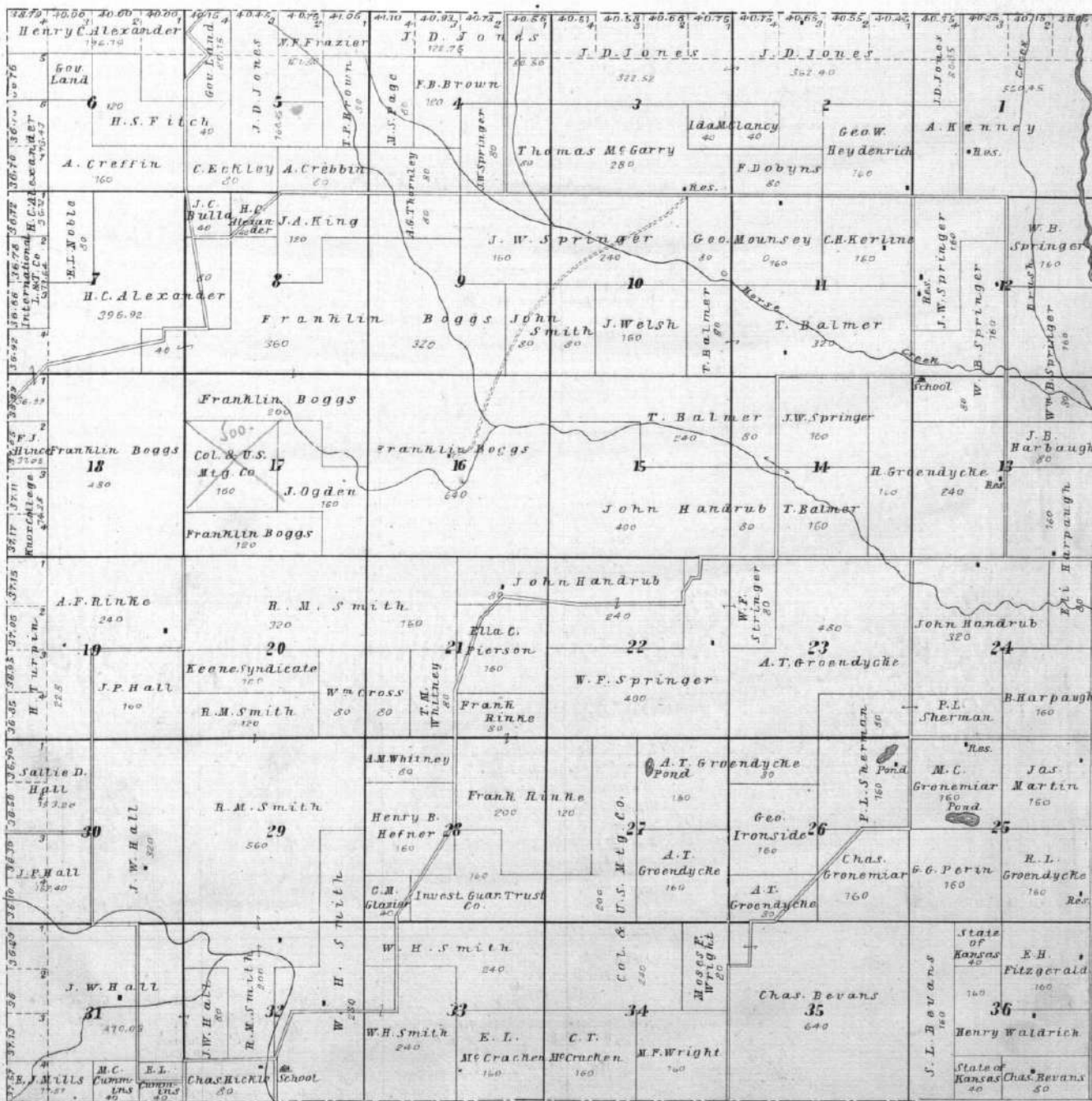


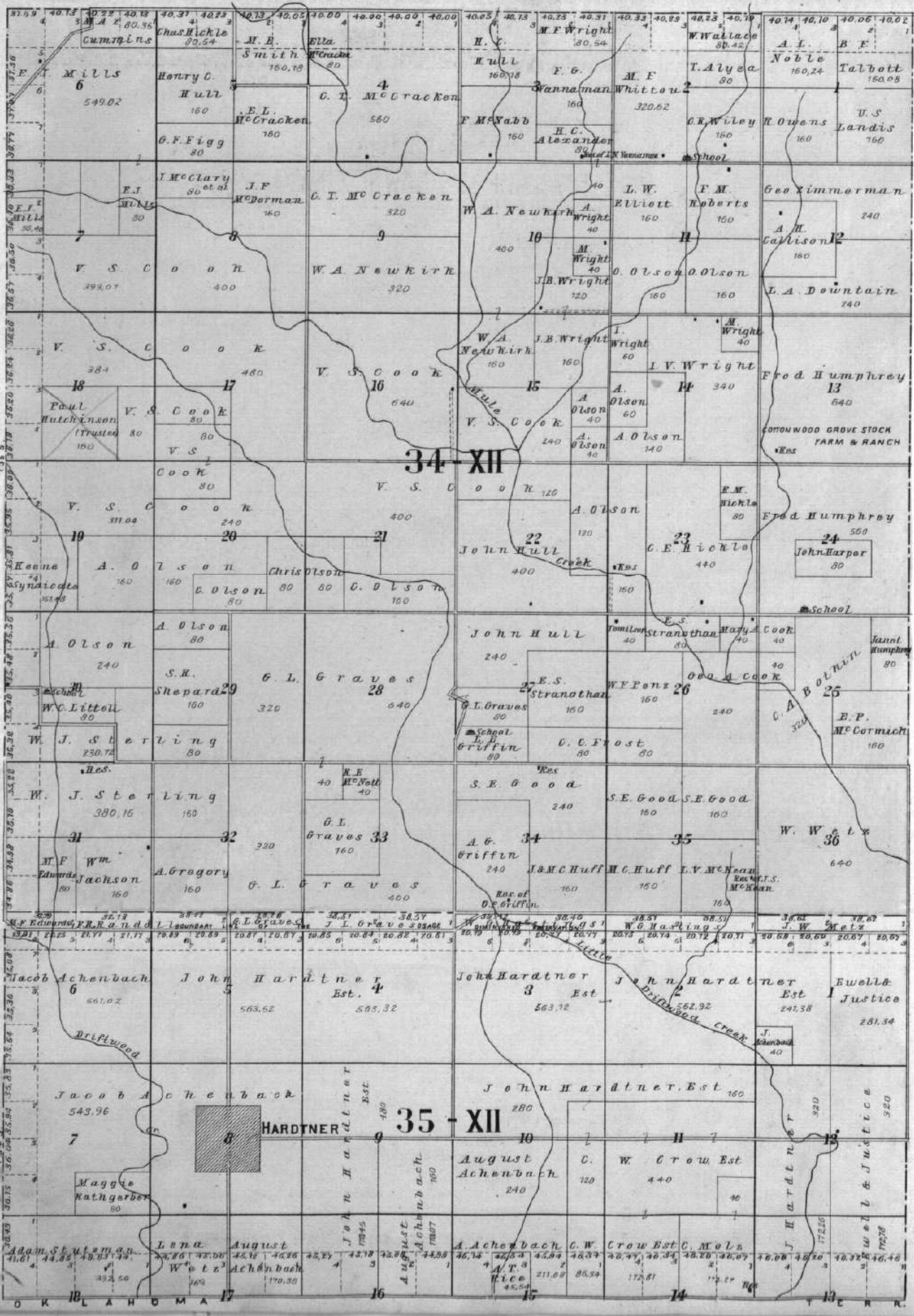
MAP OF
TOWNSHIP 31 S. RANGE XII W.
 OF THE 6TH P. M.





MAP OF
TOWNSHIP 33 S. RANGE 11 W.
 OF THE 6TH P. M.





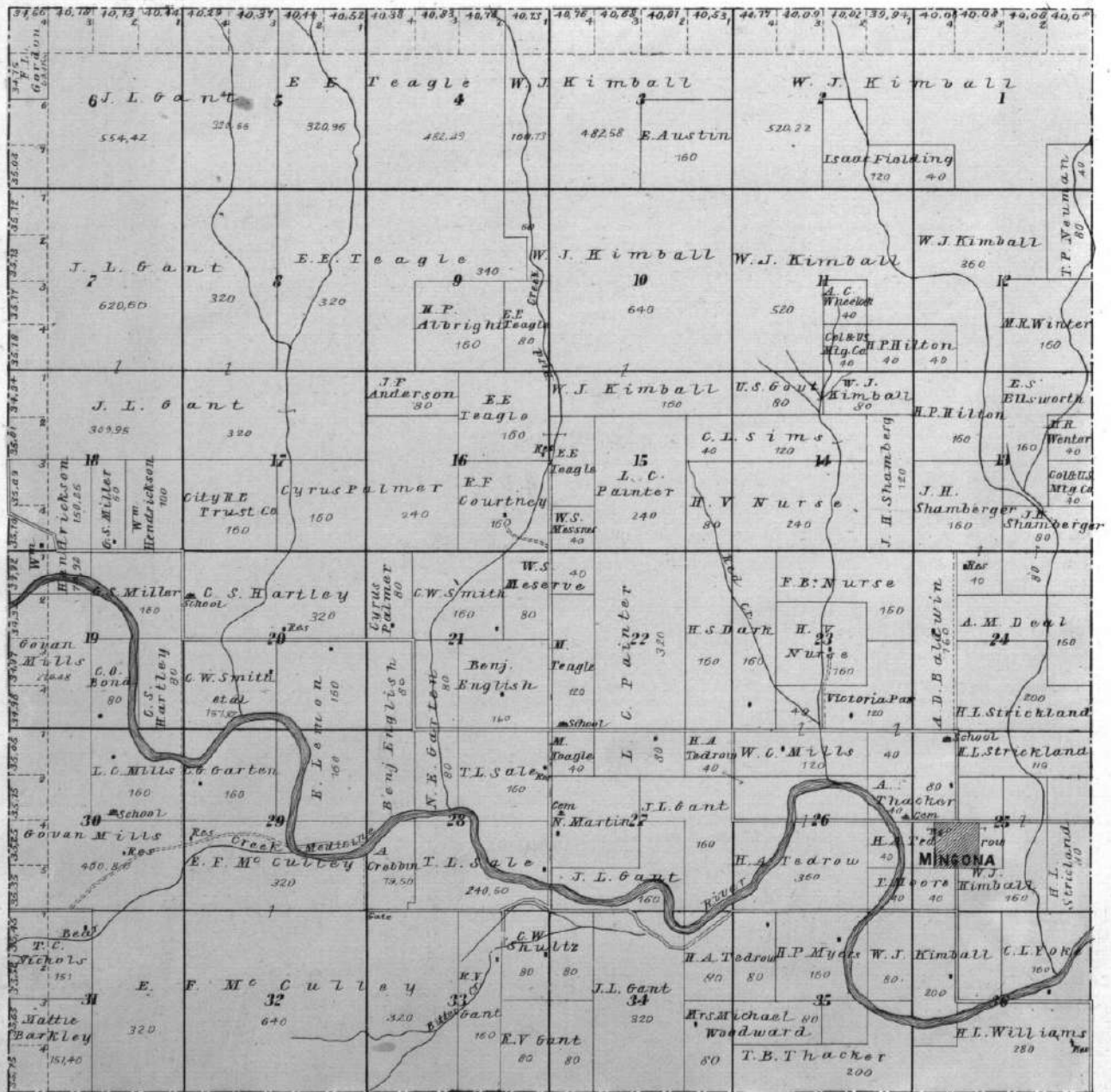
MAP OF TOWNSHIP 30S. RANGE XIIIW. OF THE 6TH P. M.

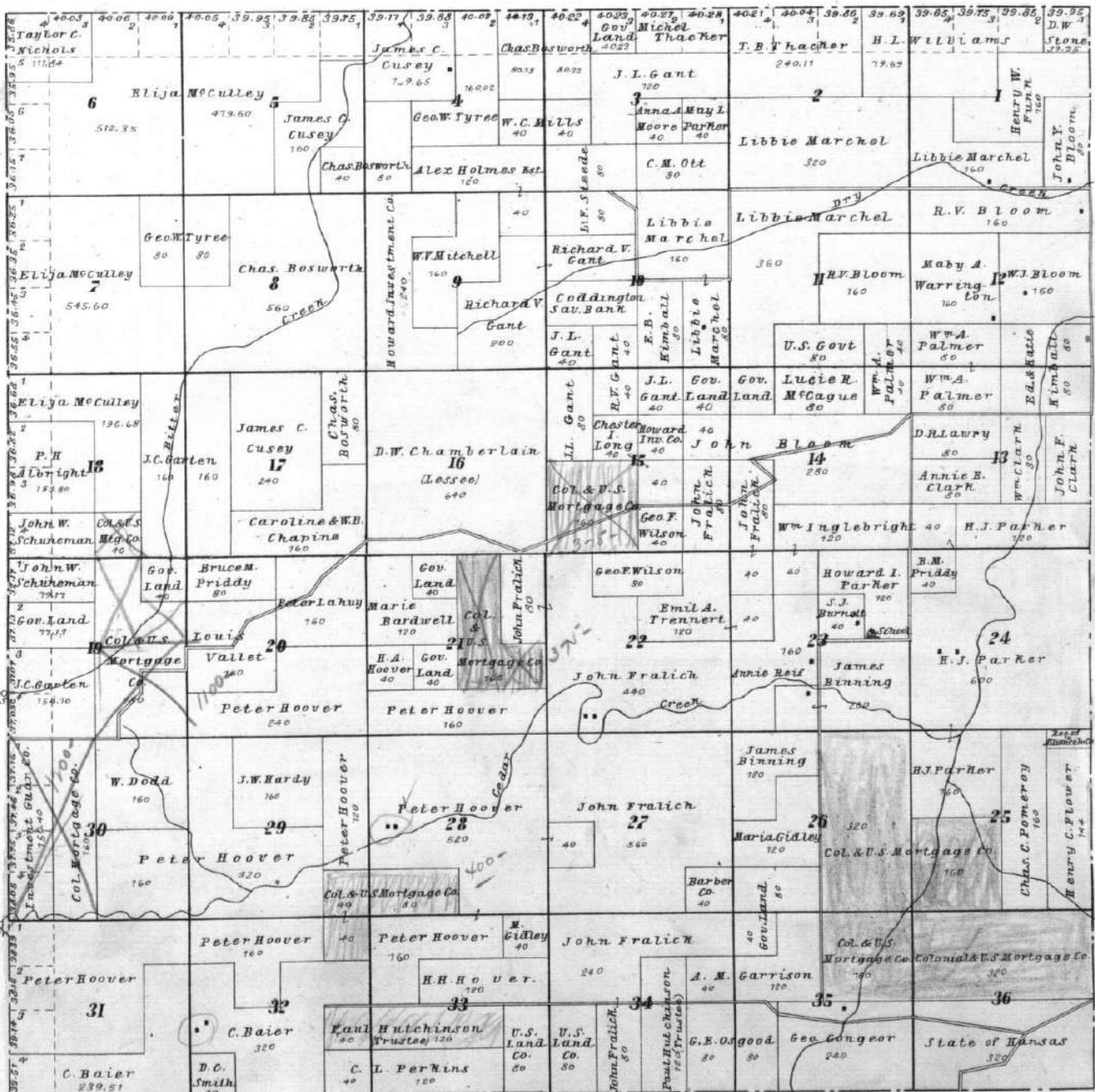
L2

PRATT	CO.																											
1085	31,32	31,35	31,74	31,78	31,71	31,77	31,79	31,78	31,76	31,78	31,60	31,38	31,74	31,92	20,98	31,16	31,40	31,64	31,75	31,23	31,71	31,68	31,69	31,77	31,75	31,73	31,73	
J. N. S. Irwin	J. M. Boston	J. M. Boston	J. M. Boston	J. M. Boston	J. M. Boston	J. M. Boston	J. M. Boston	J. M. Boston	J. M. Boston	J. M. Boston	J. M. Boston	J. M. Boston	J. M. Boston	J. M. Boston	J. M. Boston	J. M. Boston	J. M. Boston	J. M. Boston	J. M. Boston	J. M. Boston	J. M. Boston	J. M. Boston	J. M. Boston	J. M. Boston	J. M. Boston	J. M. Boston	J. M. Boston	J. M. Boston
199,57	159,96	73,93	73,93	73,93	73,93	73,93	73,93	73,93	73,93	73,93	73,93	73,93	73,93	73,93	158,85	310,52	319,95	159,85	239,97	159,80	159,80	159,80	159,80	159,80	159,80	159,80	159,80	159,80
Henry Knackstedt	R. A. Wilson	J. M. Boston	Edw J Lambert	E. J. Lambert	L. J. Tobias	John K Douglas	Alan & Mabel Keys	E. D. Blaine	F. Reed	F. Churchill	Wm F Chamberlain	Watkins Land. Co	Wm F Chamberlain	Wm F Chamberlain	Wm F Chamberlain	Wm F Chamberlain	Wm F Chamberlain	Wm F Chamberlain	Wm F Chamberlain	Wm F Chamberlain	Wm F Chamberlain	Wm F Chamberlain	Wm F Chamberlain	Wm F Chamberlain	Wm F Chamberlain	Wm F Chamberlain	Wm F Chamberlain	Wm F Chamberlain
959,20	150	70	150	80	150	158,85	310,52	319,95	159,85	239,97	159,80	159,80	159,80	159,80	159,80	159,80	159,80	159,80	159,80	159,80	159,80	159,80	159,80	159,80	159,80	159,80	159,80	159,80
Henry Knackstedt	Edw J Lambert	J. M. Boston	E. J. Lambert	L. J. Tobias	John K Douglas	Alan & Mabel Keys	E. D. Blaine	F. Reed	F. Churchill	Wm F Chamberlain	Watkins Land. Co	Wm F Chamberlain	Wm F Chamberlain	Wm F Chamberlain	Wm F Chamberlain	Wm F Chamberlain	Wm F Chamberlain	Wm F Chamberlain	Wm F Chamberlain	Wm F Chamberlain	Wm F Chamberlain	Wm F Chamberlain	Wm F Chamberlain	Wm F Chamberlain	Wm F Chamberlain	Wm F Chamberlain	Wm F Chamberlain	Wm F Chamberlain
550	120	120	80	80	160	80	80	160	160	200	160	160	160	160	160	160	160	160	160	160	160	160	160	160	160	160	160	160
Henry Knackstedt	Robt A Wilson	Chas Uhe	Cartter Bartlett	Bucklin	L. J. David	J. I. Davis	Chas M. Gaither	J. I. Davis	J. I. Davis	Chas M. Gaither	J. I. Davis	J. I. Davis	J. I. Davis	J. I. Davis	J. I. Davis	J. I. Davis	J. I. Davis	J. I. Davis	J. I. Davis	J. I. Davis	J. I. Davis	J. I. Davis	J. I. Davis	J. I. Davis	J. I. Davis	J. I. Davis	J. I. Davis	J. I. Davis
550	120	80	360	80	160	160	160	160	160	200	160	160	160	160	160	160	160	160	160	160	160	160	160	160	160	160	160	160
Henry Knackstedt	Robt A Wilson	Chas Uhe	Cartter Bartlett	Bucklin	L. J. David	J. I. Davis	Chas M. Gaither	J. I. Davis	J. I. Davis	Chas M. Gaither	J. I. Davis	J. I. Davis	J. I. Davis	J. I. Davis	J. I. Davis	J. I. Davis	J. I. Davis	J. I. Davis	J. I. Davis	J. I. Davis	J. I. Davis	J. I. Davis	J. I. Davis	J. I. Davis	J. I. Davis	J. I. Davis	J. I. Davis	J. I. Davis
439,16	320	120	640	540	160	160	160	160	160	240	160	160	160	160	160	160	160	160	160	160	160	160	160	160	160	160	160	160
Brastus Shore	A. I. Wright	Cartter Bartlett	Ephraim C Grigley	E. Light	S. Light	Ida M Means	H. E. Stipp	S. Light	S. Light	Ida M Means	H. E. Stipp	S. Light	S. Light	Ida M Means	H. E. Stipp	S. Light	S. Light	Ida M Means	H. E. Stipp	S. Light	S. Light	Ida M Means	H. E. Stipp	S. Light	S. Light	Ida M Means	H. E. Stipp	
439,16	320	120	640	540	160	160	160	160	240	160	160	160	160	160	160	160	160	160	160	160	160	160	160	160	160	160	160	
Brastus Shore	A. I. Wright	Cartter Bartlett	Ephraim C Grigley	E. Light	S. Light	Ida M Means	H. E. Stipp	S. Light	S. Light	Ida M Means	H. E. Stipp	S. Light	S. Light	Ida M Means	H. E. Stipp	S. Light	S. Light	Ida M Means	H. E. Stipp	S. Light	S. Light	Ida M Means	H. E. Stipp	S. Light	S. Light	Ida M Means	H. E. Stipp	
159,80	40	40	160	80	80	160	160	160	160	160	160	160	160	160	160	160	160	160	160	160	160	160	160	160	160	160	160	
F. S. Gordon	T. S. Frazier	W. J. Gordon	C. L. Grigsby	Mary Derley	Andw J Bishop	John Bullard	Peter Hopley	H. E. McCoy	Jos. McCoy	Florence H. Johnson	Andw J Bishop	John Bullard	Peter Hopley	H. E. McCoy	Jos. McCoy	Florence H. Johnson	Andw J Bishop	John Bullard	Peter Hopley	H. E. McCoy	Jos. McCoy	Florence H. Johnson	Andw J Bishop	John Bullard	Peter Hopley	H. E. McCoy		
159,80	40	40	160	80	80	160	160	160	160	160	160	160	160	160	160	160	160	160	160	160	160	160	160	160	160	160		
F. S. Gordon	T. S. Frazier	W. J. Gordon	C. L. Grigsby	Mary Derley	Andw J Bishop	John Bullard	Peter Hopley	H. E. McCoy	Jos. McCoy	Florence H. Johnson	Andw J Bishop	John Bullard	Peter Hopley	H. E. McCoy	Jos. McCoy	Florence H. Johnson	Andw J Bishop	John Bullard	Peter Hopley	H. E. McCoy	Jos. McCoy	Florence H. Johnson	Andw J Bishop	John Bullard	Peter Hopley	H. E. McCoy		
479,52	160	360	320	160	160	160	160	160	160	160	160	160	160	160	160	160	160	160	160	160	160	160	160	160	160	160		
F. L. Gordon	Thos. H. Winkler	Chas W. Weaver	Wm H. McCann	Thos H Winkler	Bishop	Wm H. McCann	Thos H Winkler	Bishop	Wm H. McCann	Thos H Winkler	Bishop	Wm H. McCann	Thos H Winkler	Bishop	Wm H. McCann	Thos H Winkler	Bishop	Wm H. McCann	Thos H Winkler	Bishop	Wm H. McCann	Thos H Winkler	Bishop	Wm H. McCann	Thos H Winkler	Bishop		
479,52	160	360	320	160	160	160	160	160	160	160	160	160	160	160	160	160	160	160	160	160	160	160	160	160	160	160		
F. L. Gordon	Thos. H. Winkler	Chas W. Weaver	Wm H. McCann	Thos H Winkler	Bishop	Wm H. McCann	Thos H Winkler	Bishop	Wm H. McCann	Thos H Winkler	Bishop	Wm H. McCann	Thos H Winkler	Bishop	Wm H. McCann	Thos H Winkler	Bishop	Wm H. McCann	Thos H Winkler	Bishop	Wm H. McCann	Thos H Winkler	Bishop	Wm H. McCann	Thos H Winkler	Bishop		
639,92	540	120	160	160	160	160	160	160	160	160	160	160	160	160	160	160	160	160	160	160	160	160	160	160	160	160		
F. L. Gordon	Jos I. Gant	E. L. Tragle	E. L. Tragle	E. L. Tragle	E. L. Tragle	E. L. Tragle	E. L. Tragle	E. L. Tragle	E. L. Tragle	E. L. Tragle	E. L. Tragle	E. L. Tragle	E. L. Tragle	E. L. Tragle	E. L. Tragle	E. L. Tragle	E. L. Tragle	E. L. Tragle	E. L. Tragle	E. L. Tragle	E. L. Tragle	E. L. Tragle	E. L. Tragle	E. L. Tragle	E. L. Tragle	E. L. Tragle		



MAP OF
TOWNSHIP 31 S. RANGE XIII W.
 OF THE 6TH P. M.

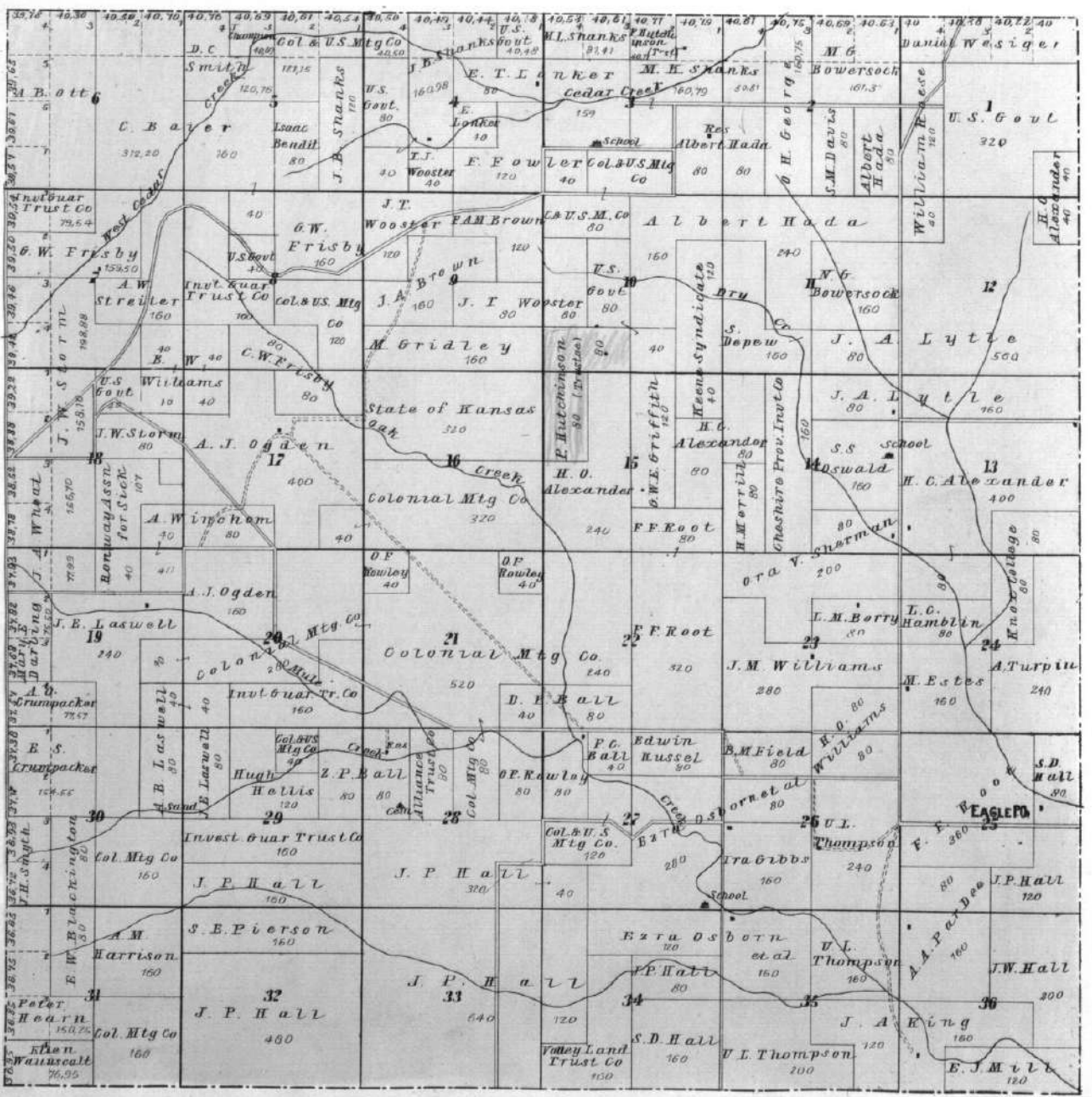


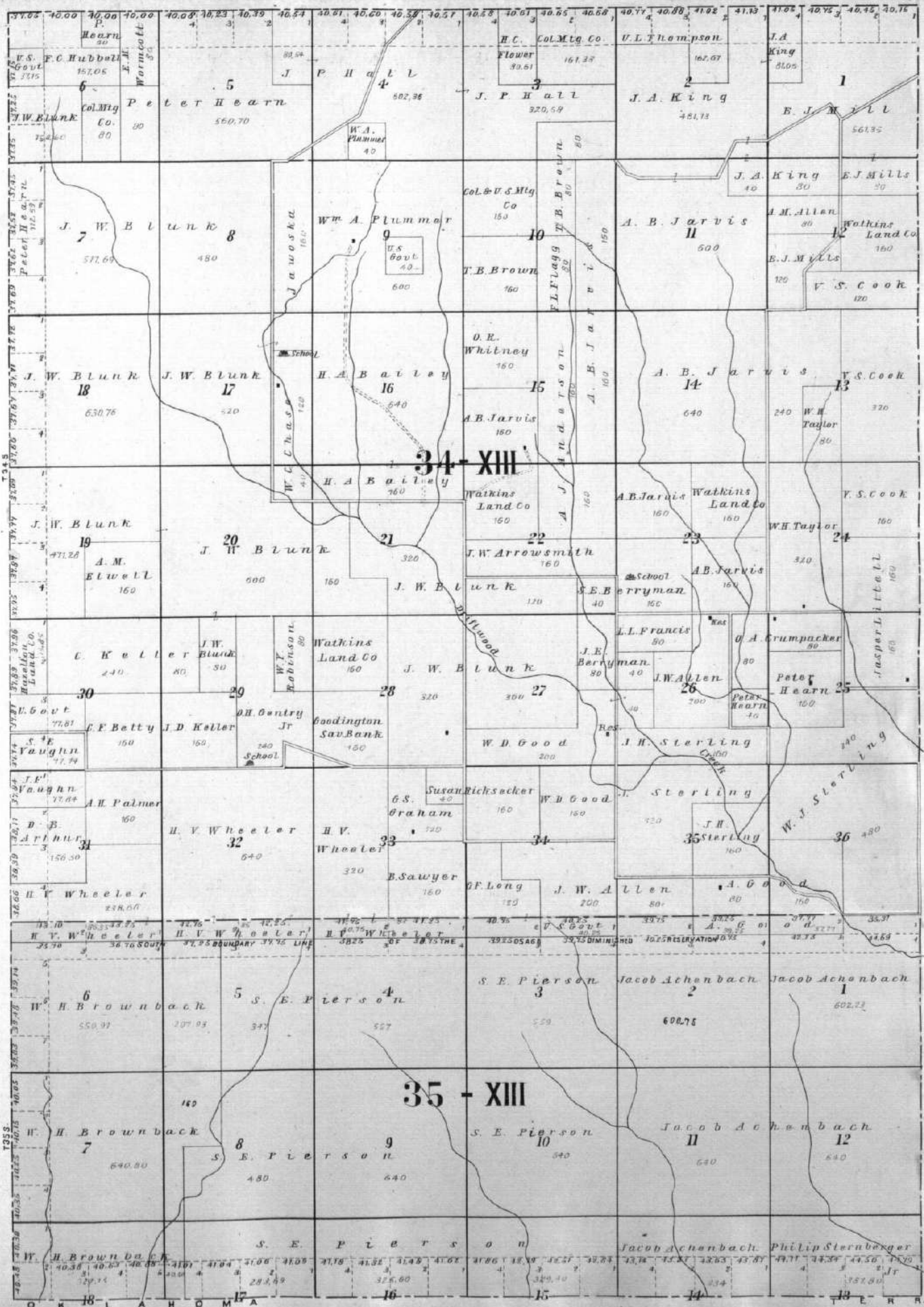


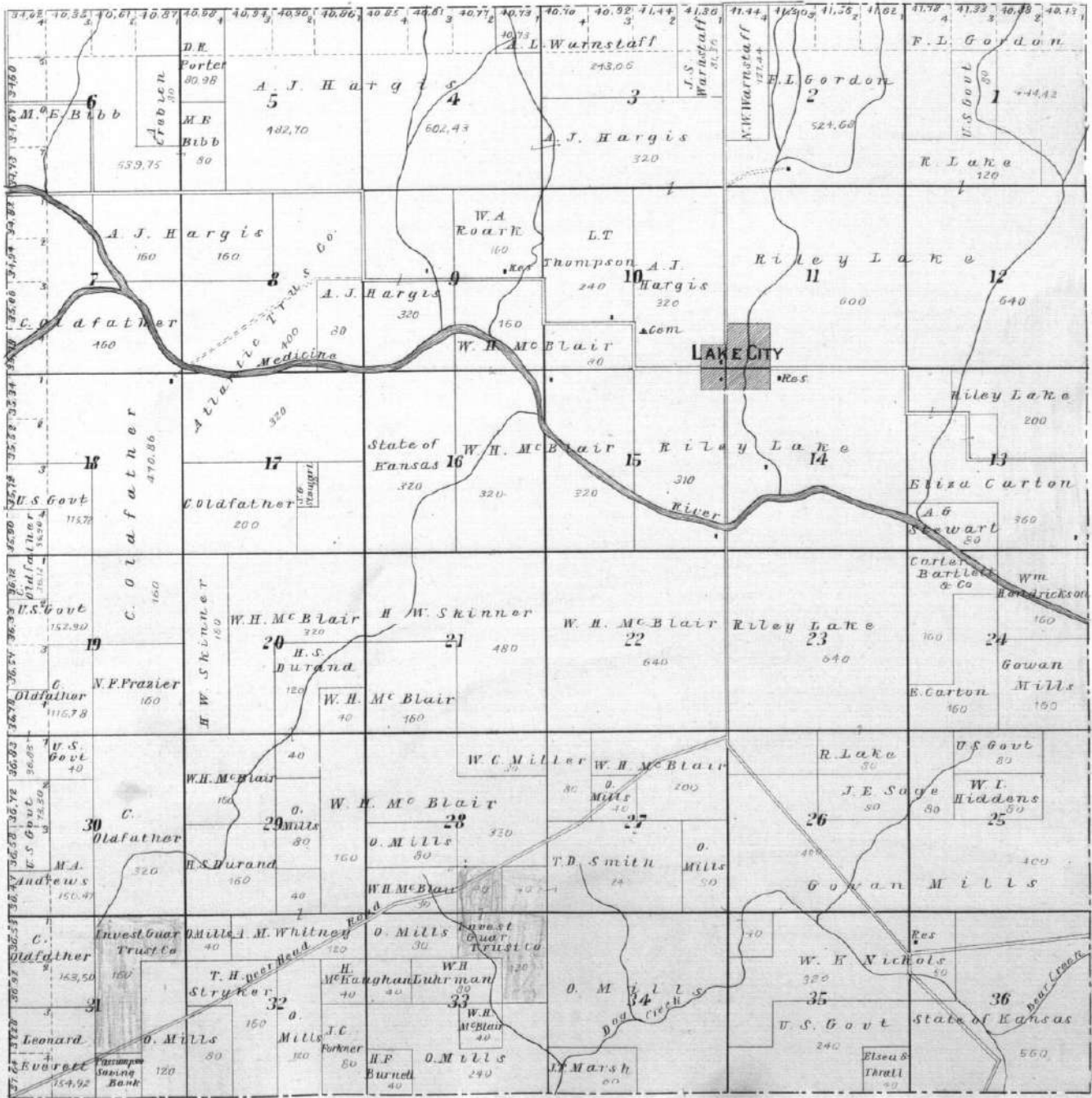
83



MAP OF
TOWNSHIP 33 S. RANGE XIII W.
Scale 2 1/2 inches to 1 mile.
OF THE 6TH P. M.

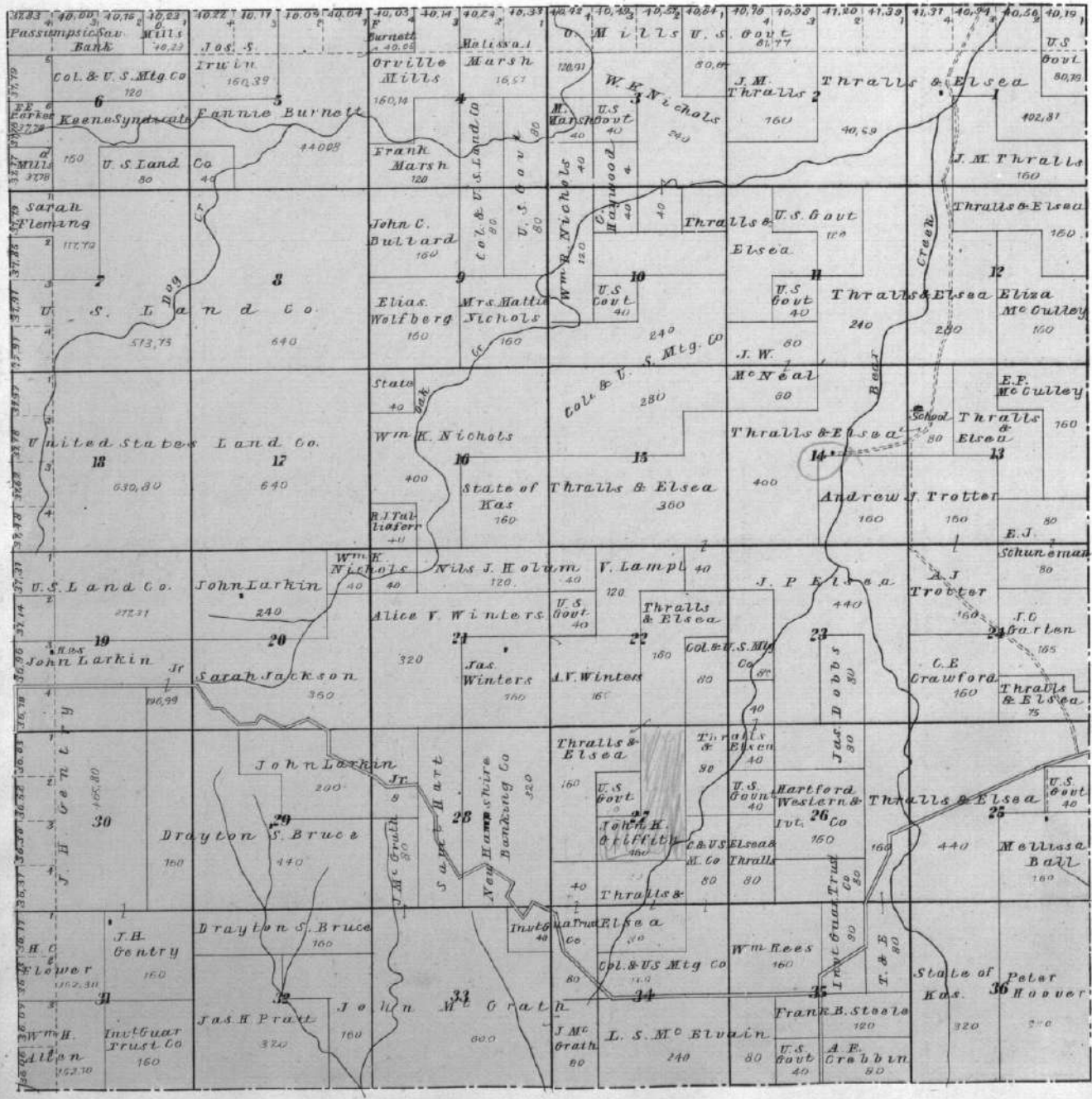


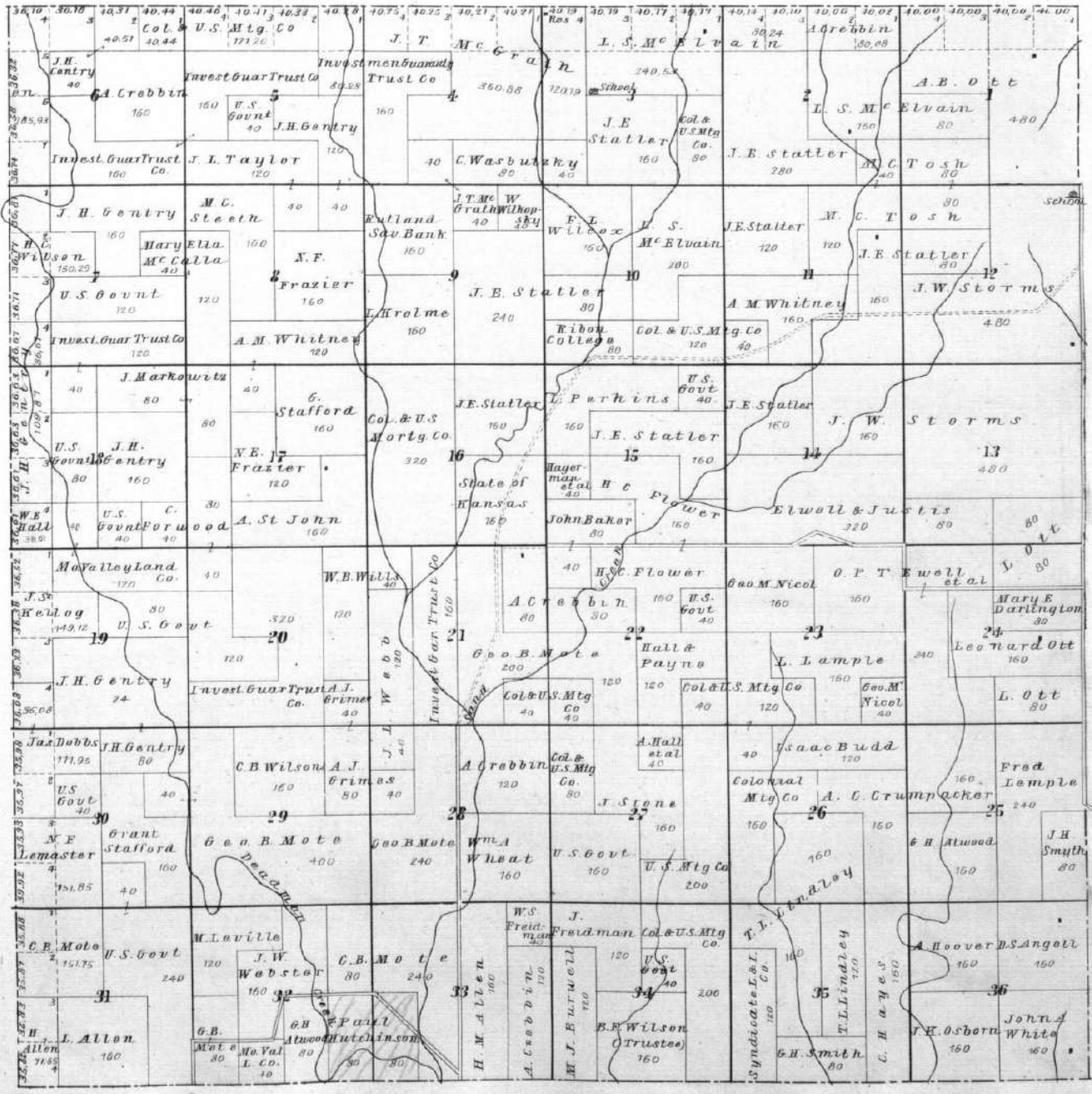


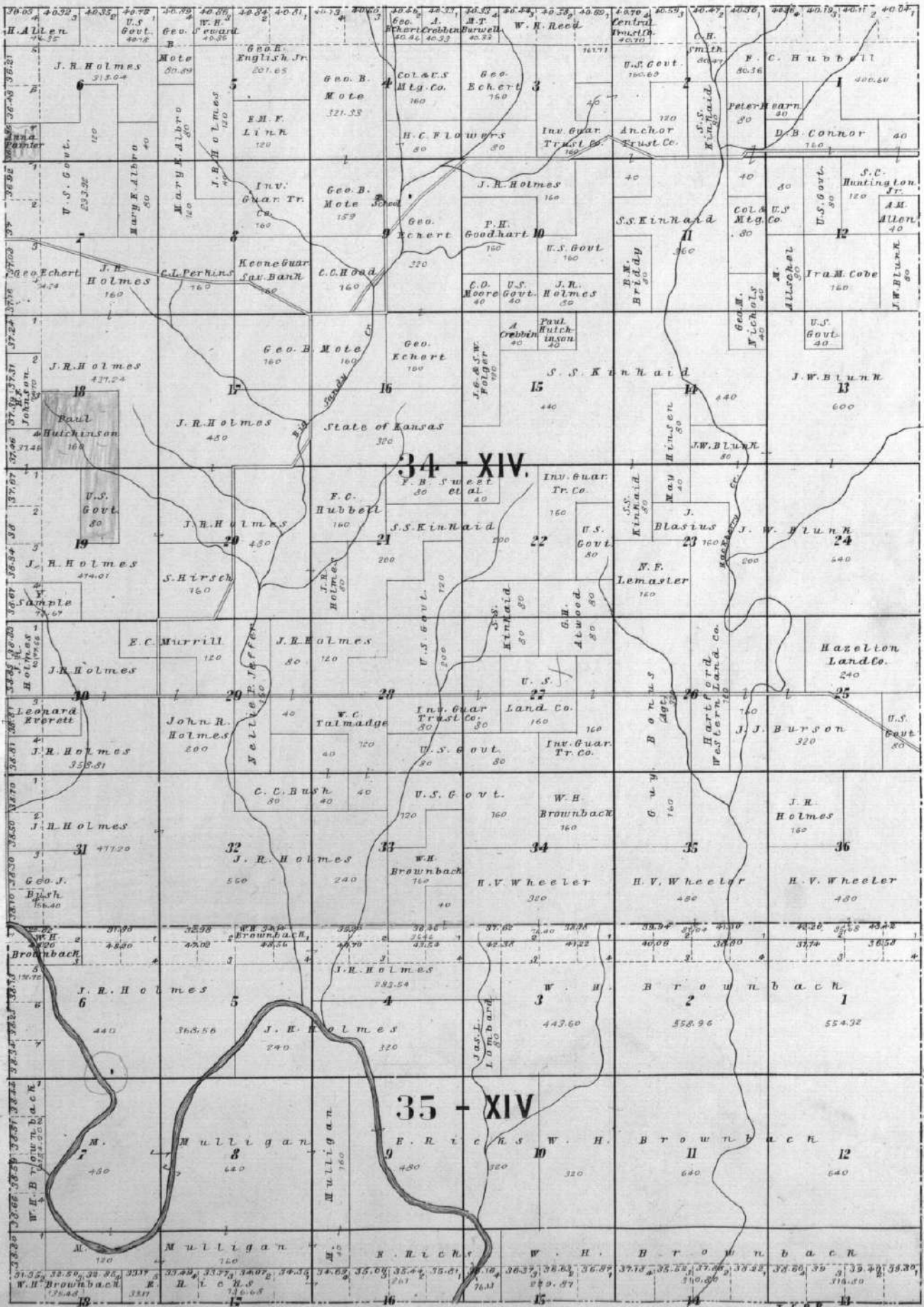




MAP OF
TOWNSHIP 32 S. RANGE XIV W.
 OF THE 6TH P. M.



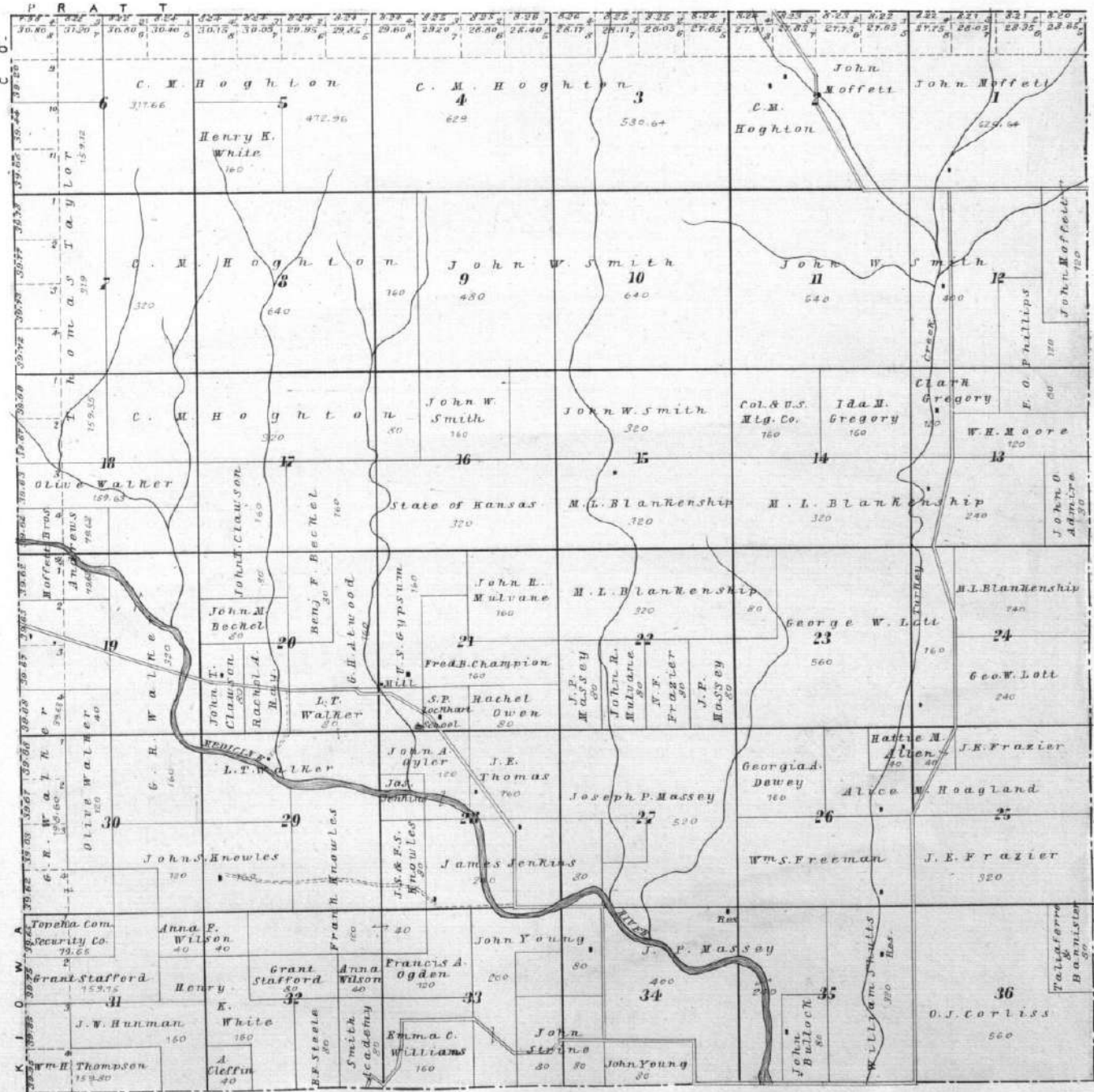




34 - XIV

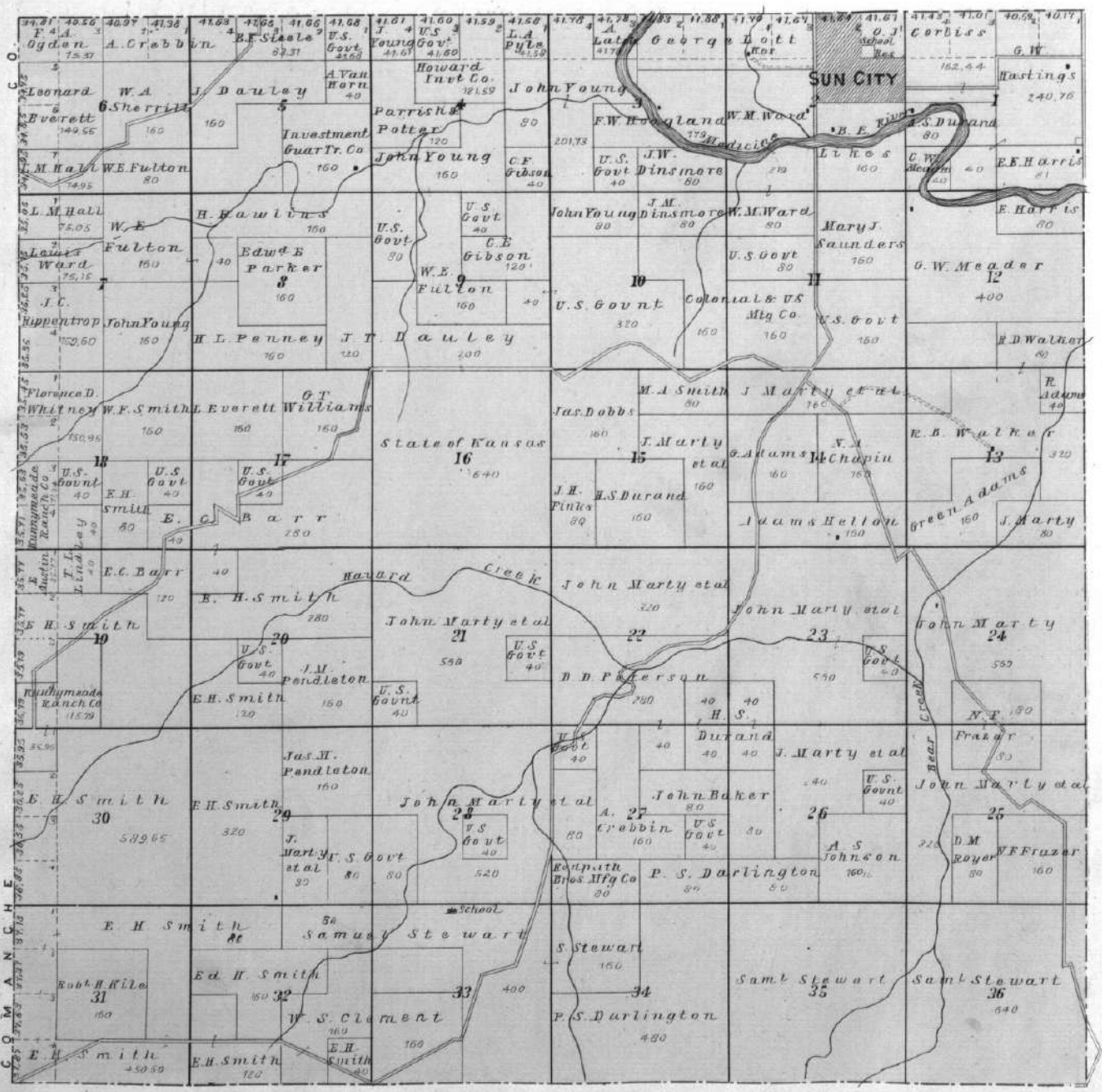
35 - XIV

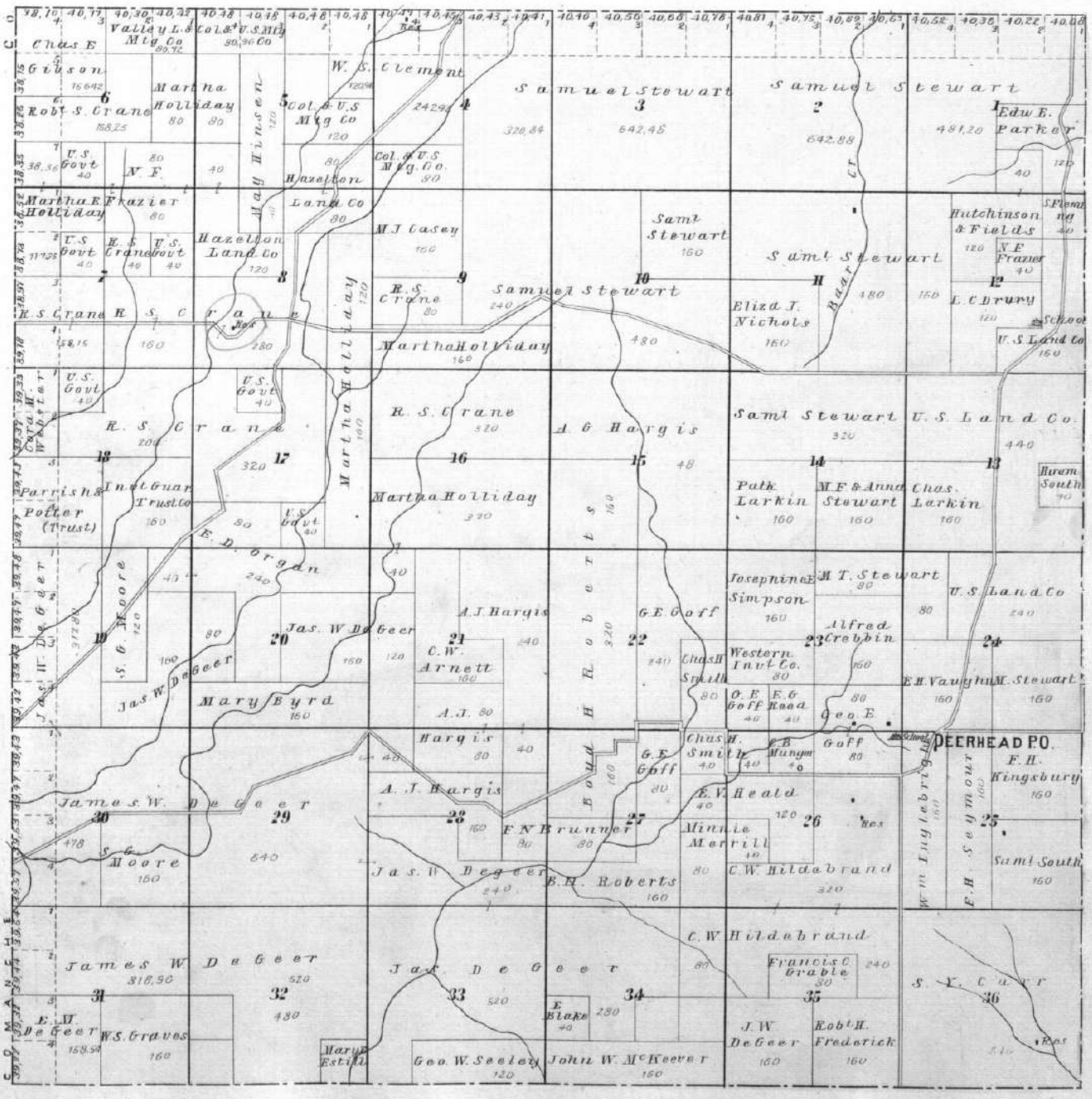
MAP OF
TOWNSHIP 30 S. RANGE XV W.
Scale 2 inches to 1 Mile
OF THE 6TH P. M.



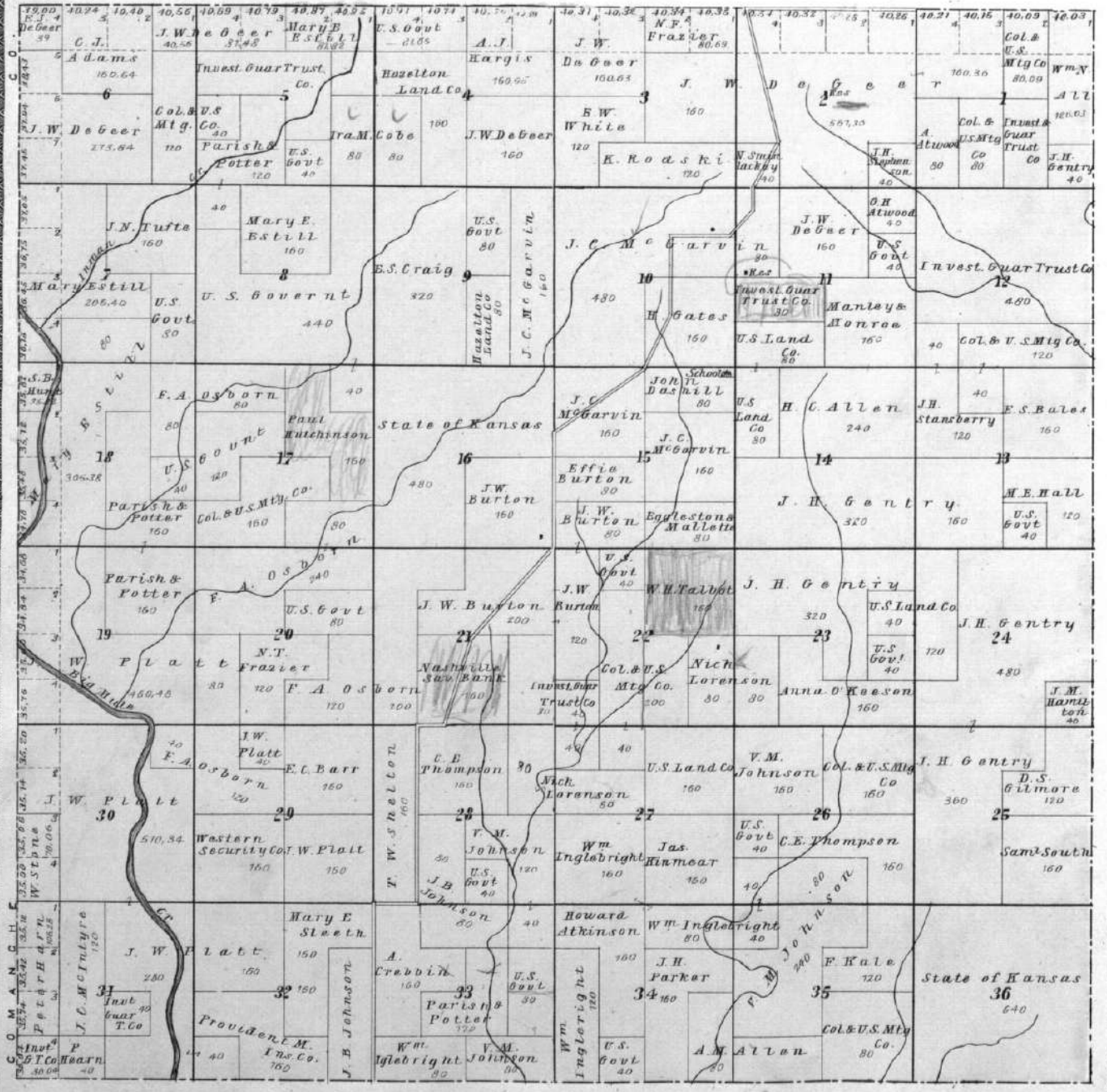


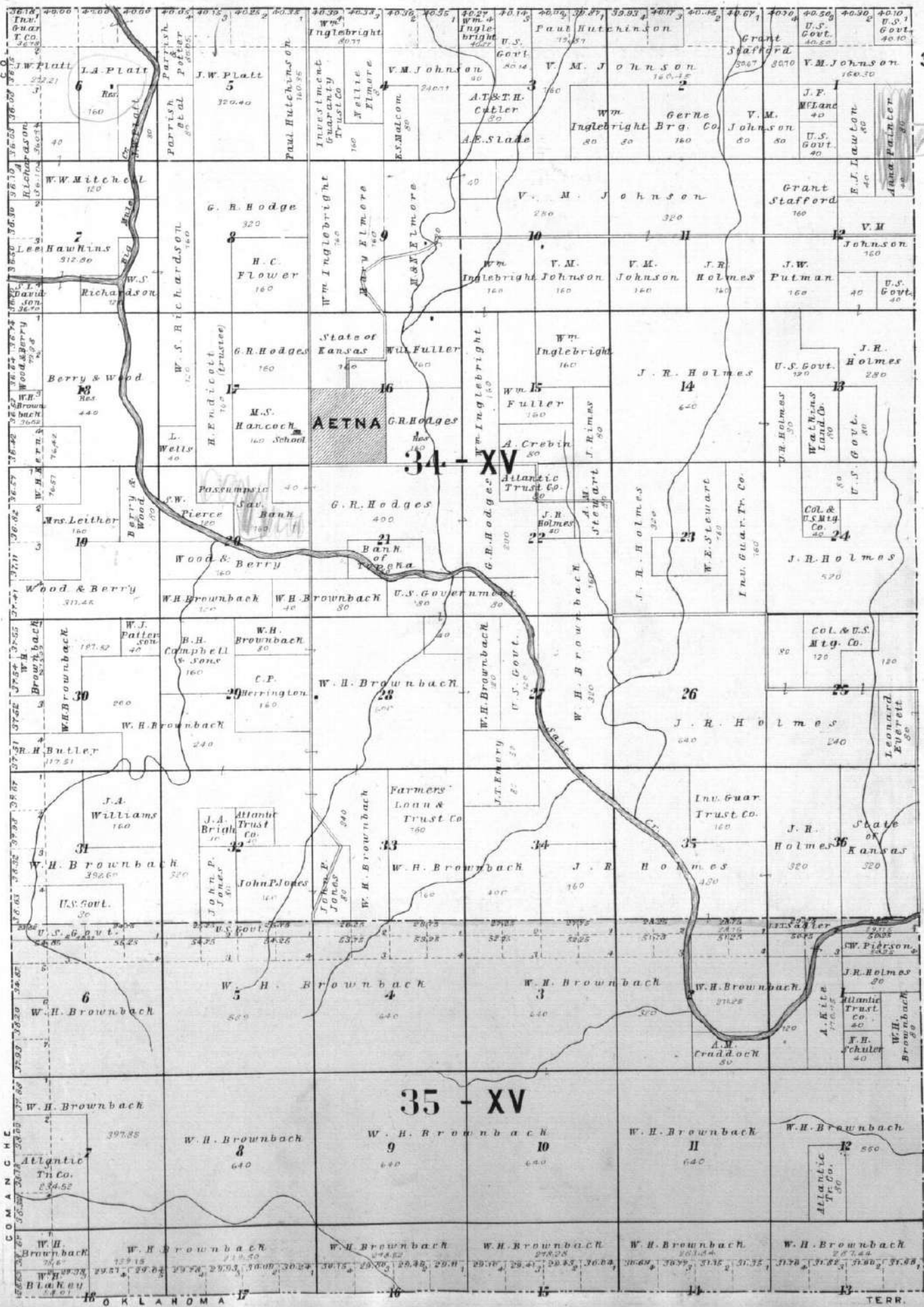
MAP OF
TOWNSHIP 31 S. RANGE XV W.
 OF THE 6TH P. M.





MAP OF TOWNSHIP 33S. RANGE XVW OF THE 6TH P. M.





34 - XV

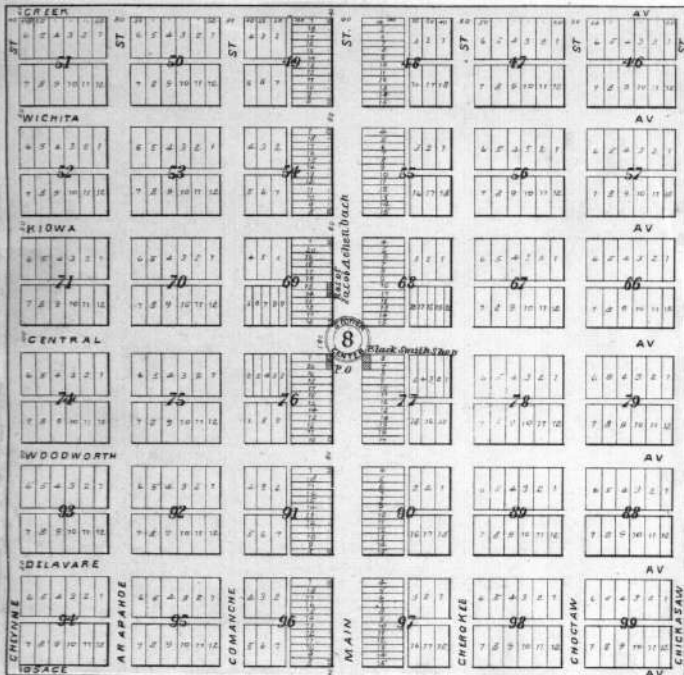
35 - XV

COMANCHE

HARDTNER

T34S. R.X.W.
Scale 300 ft. to 1 inch.

Jacob Schonbach

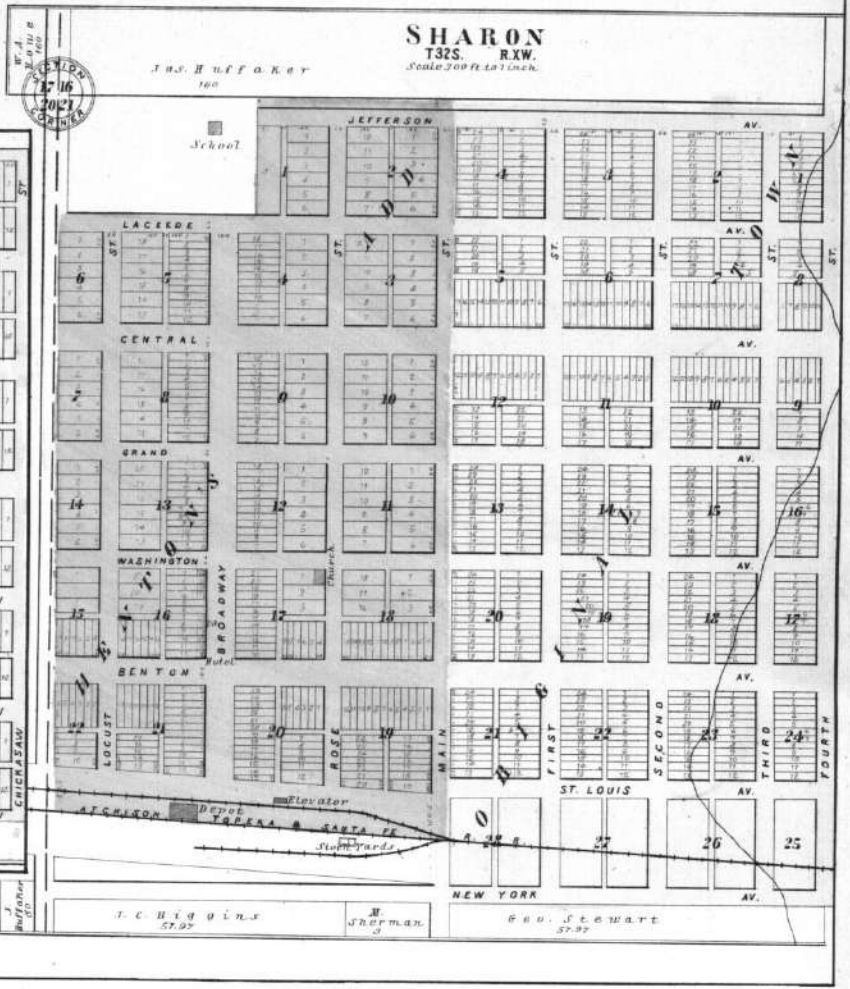


Jacob Schonbach

SHARON

T32S. R.X.W.
Scale 300 ft. to 1 inch.

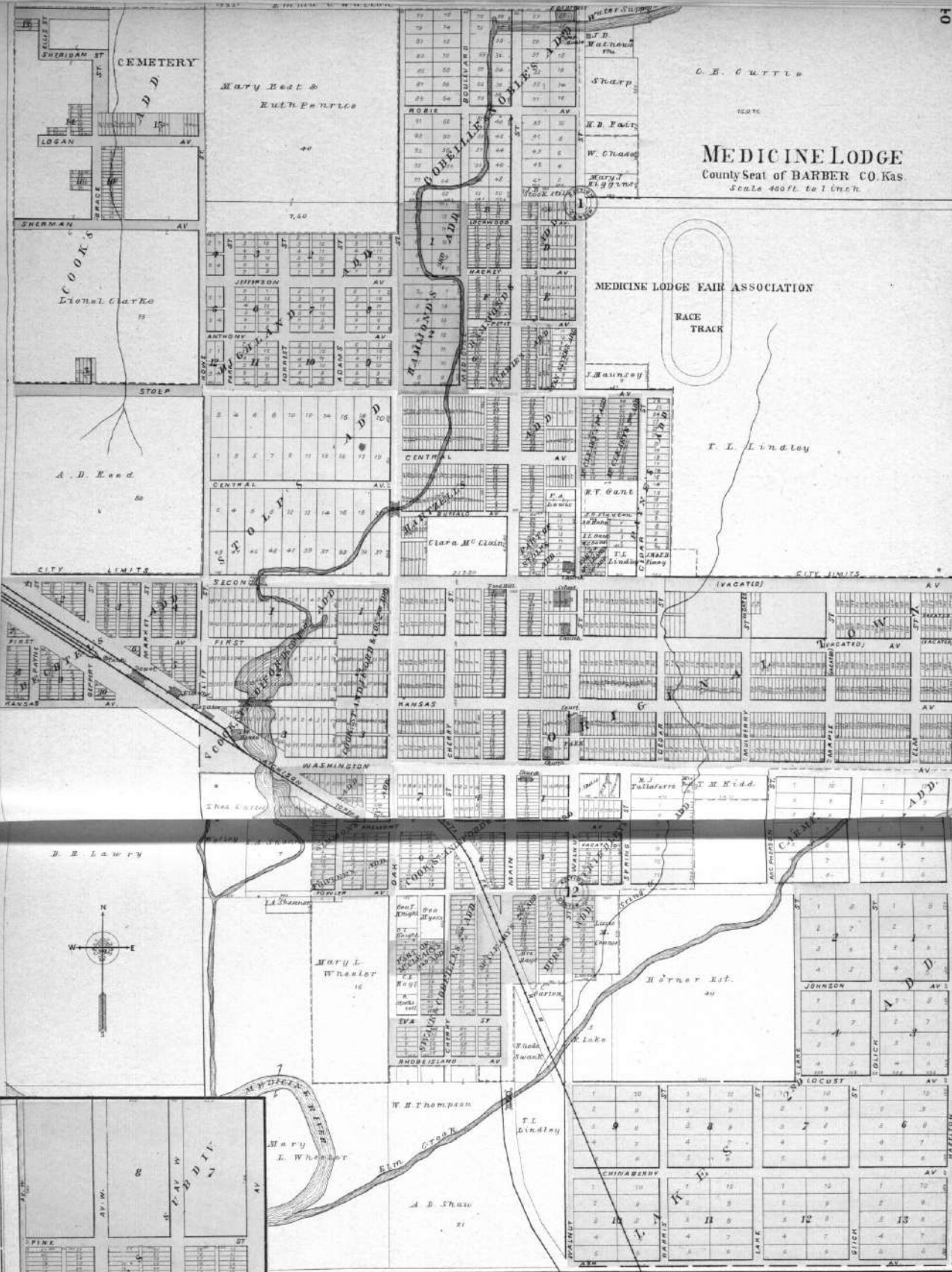
J. S. Huffaker
188



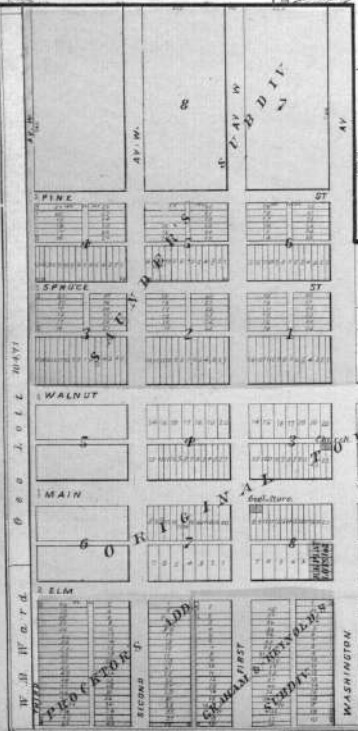
T. C. HUGHES
57-97

J. S. HUFFAKER
57-97

R. D. SEEWATE
57-97



MEDICINE LODGE
 County Seat of BARBER CO. Kas.
 Scale 400 ft. to 1 inch.



SUN CITY
 T. 31 S. R. 13 W.
 Scale 500 ft. to 1 inch.

LAKE CITY
 T. 31 S. R. 13 W.
 Scale 300 ft. to 1 inch.

