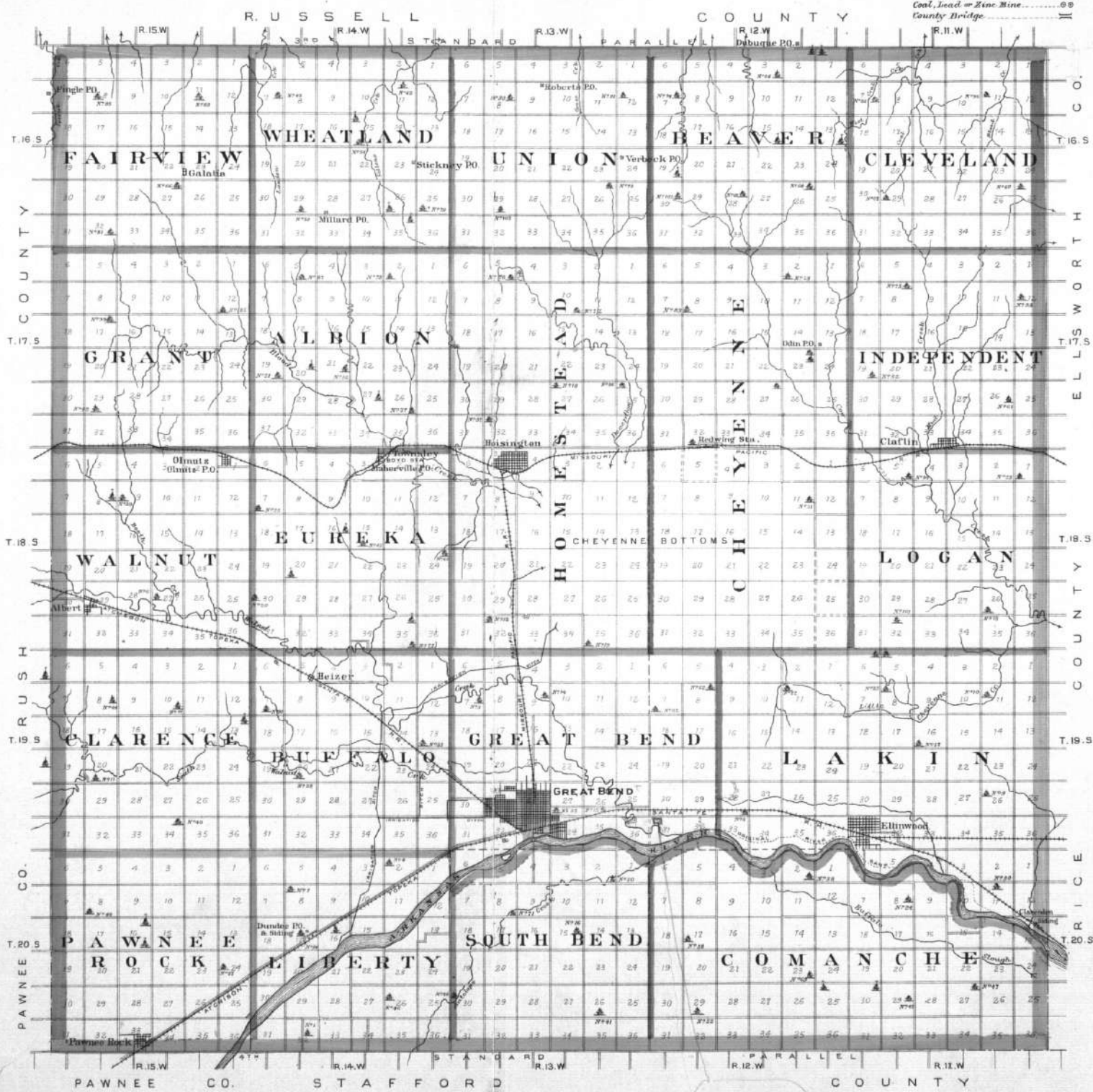


OUTLINE MAP OF **BARTON CO.** KANSAS.

Scale $\frac{1}{8}$ of an Inch to 1 Mile

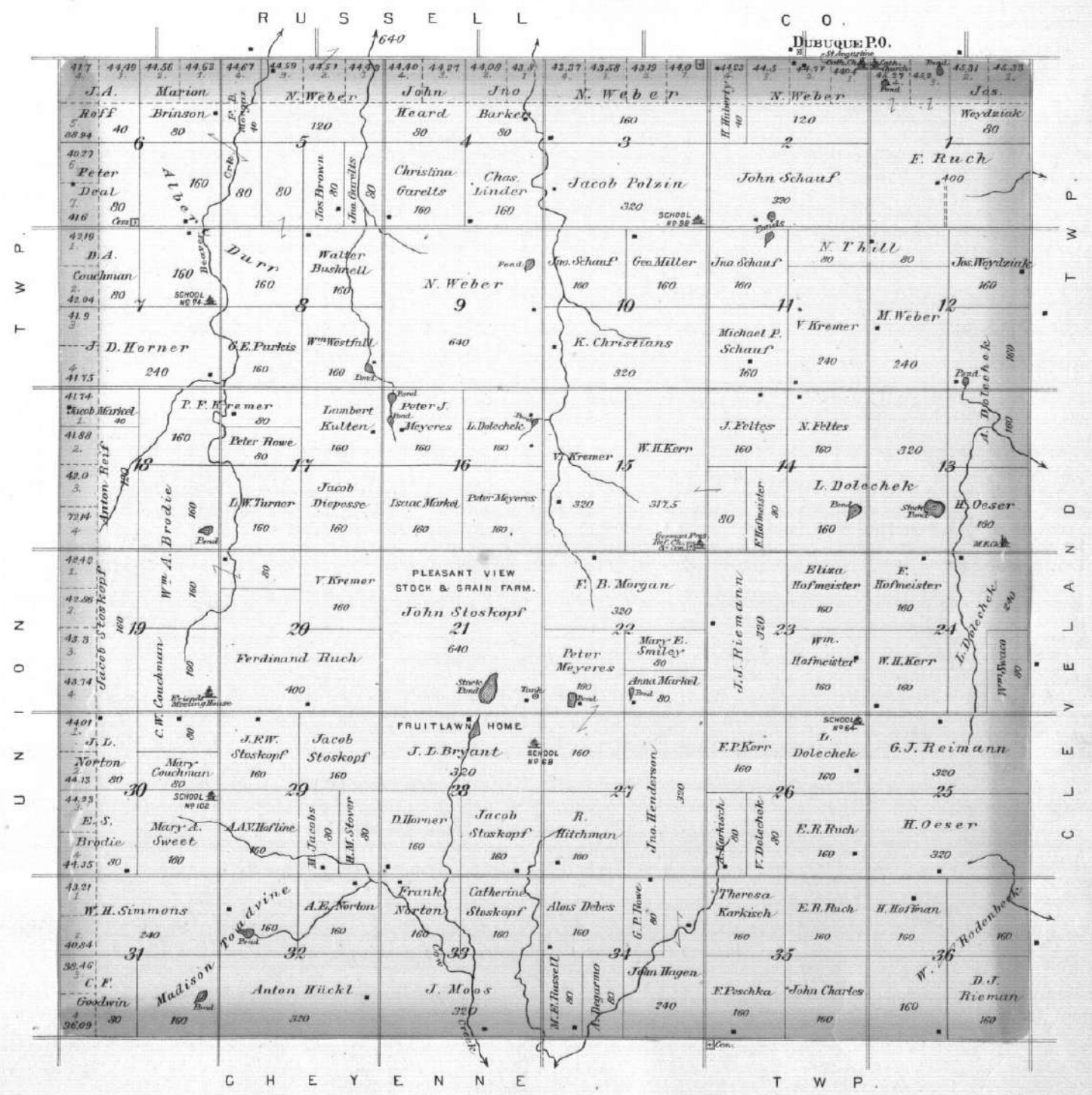
- EXPLANATION**
- Section Line.....
 - Farm or Lot Line.....
 - Wagon Road.....
 - Railroad.....
 - Creeks & Springs.....
 - Houses.....
 - Churches.....
 - School Houses.....
 - Adjacent Lands owned by same party connected by a hook, thus
 - Post Office.....
 - Coal, Lead or Zinc Mine.....
 - County Bridge.....



Location of Old Fort Zarah.

PLAT OF BEAVER

Scale 2 Inches to the Mile. Township 16 South. Range 12 West. of the 6th Principal Meridian.

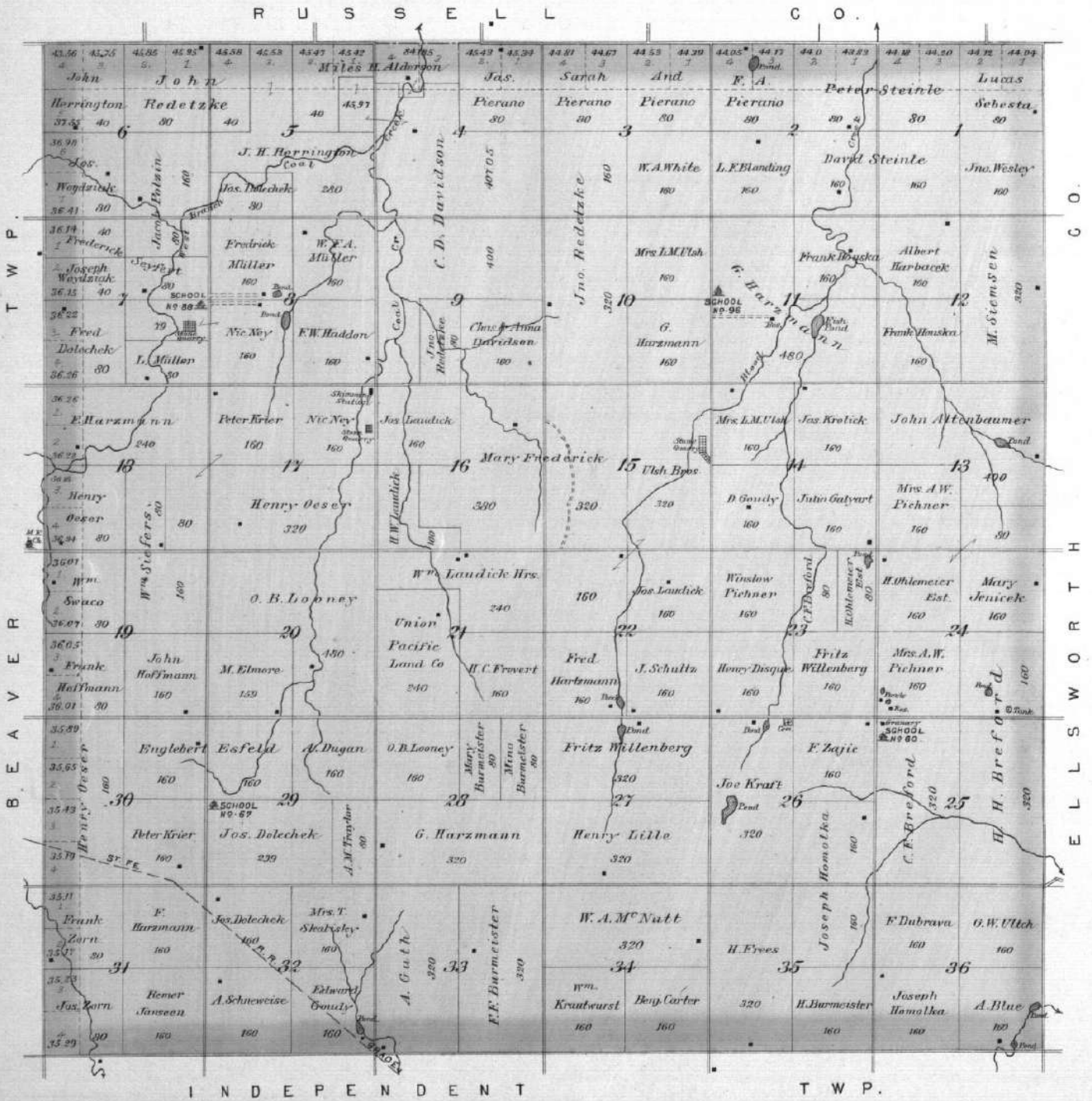


PLAT OF
CLEVELAND

Scale 2 Inches to the Mile.

Township 16 South . Range 11 West.

of the 6th Principal Meridian.

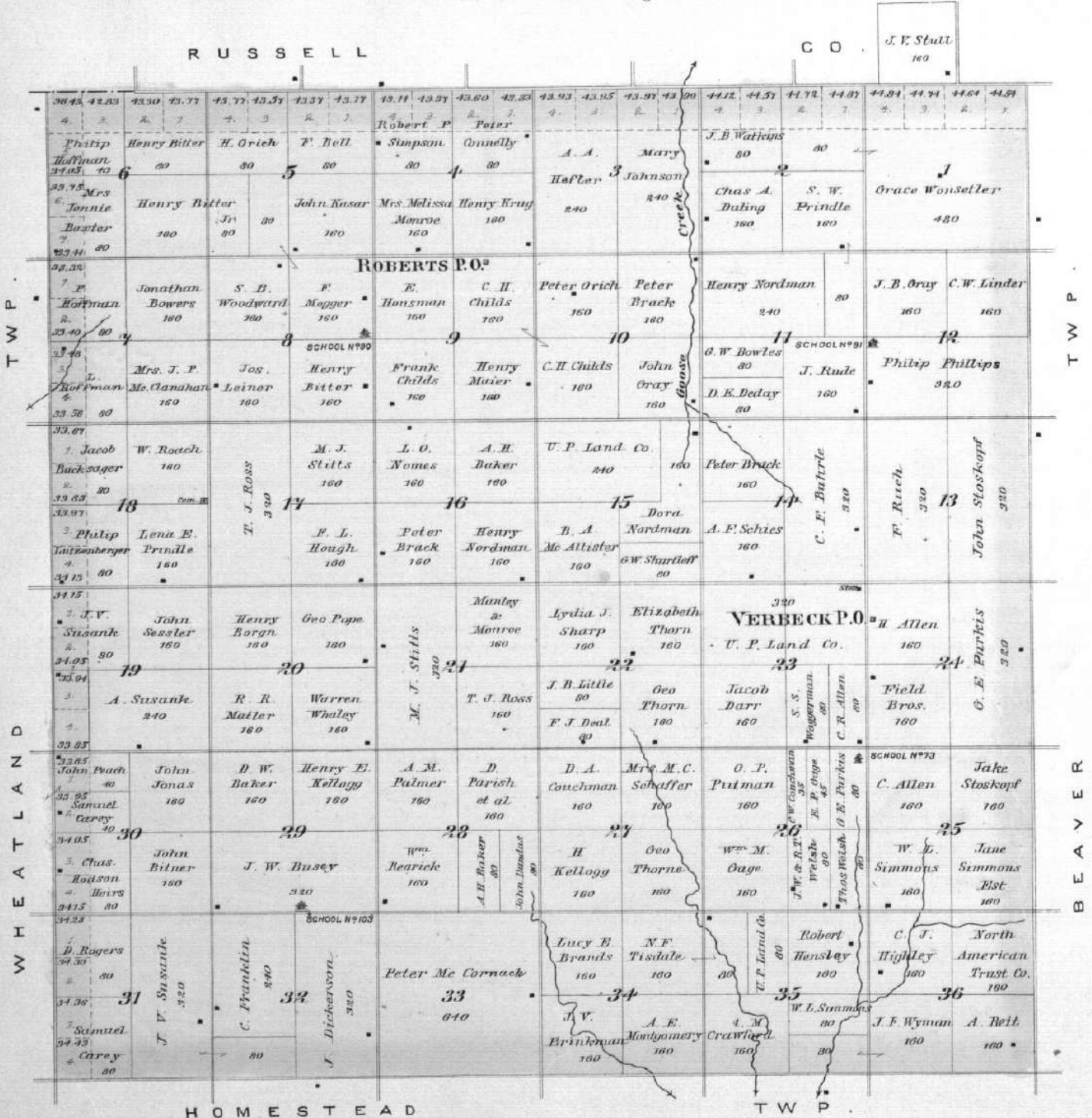


PLAT OF UNION

Scale 2 Inches to the Mile.

Township 16 South, Range 13 West.

of the 6th Principal Meridian.

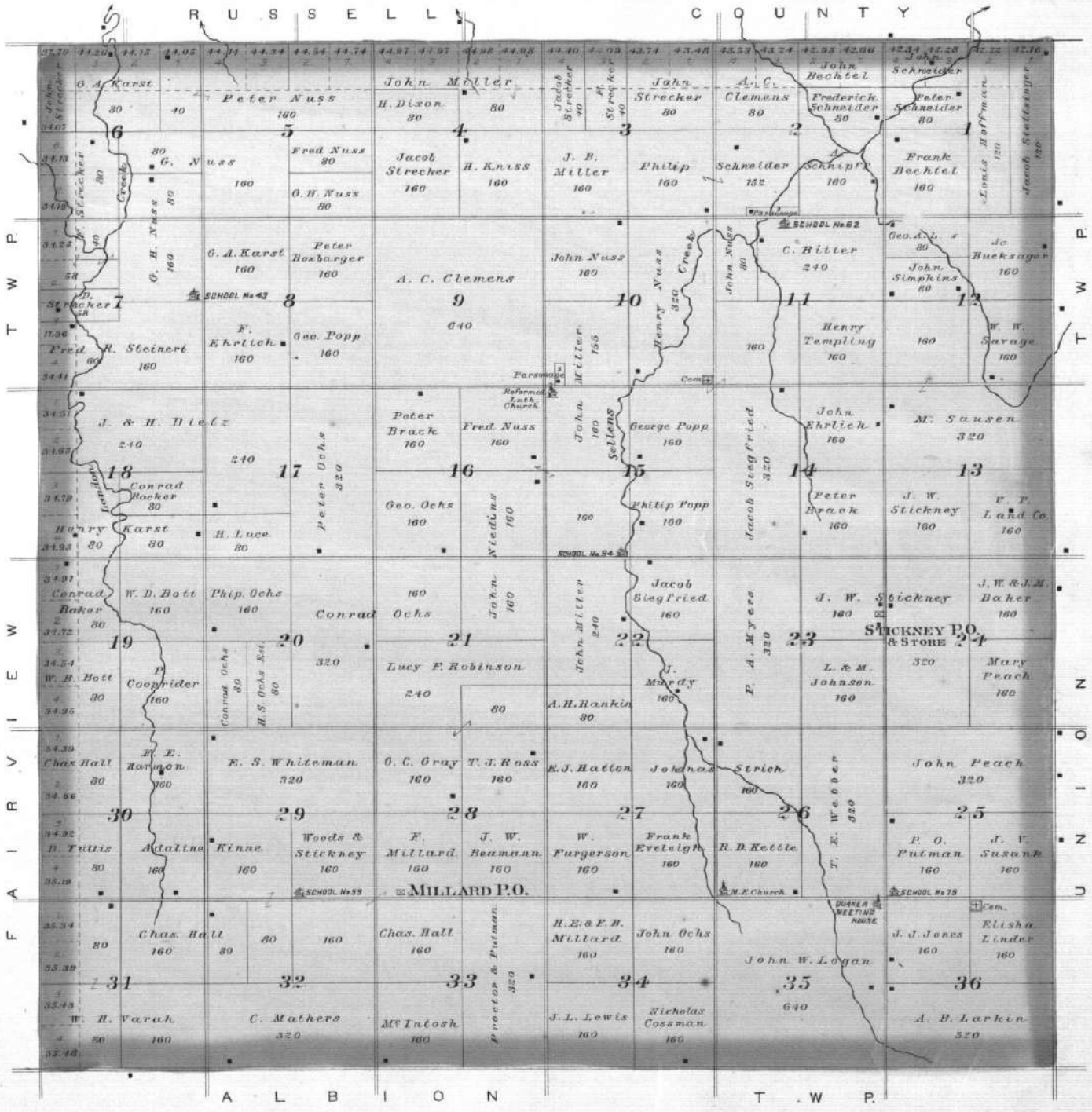


PLAT OF
WHEATLAND

Scale 2 Inches to the Mile.

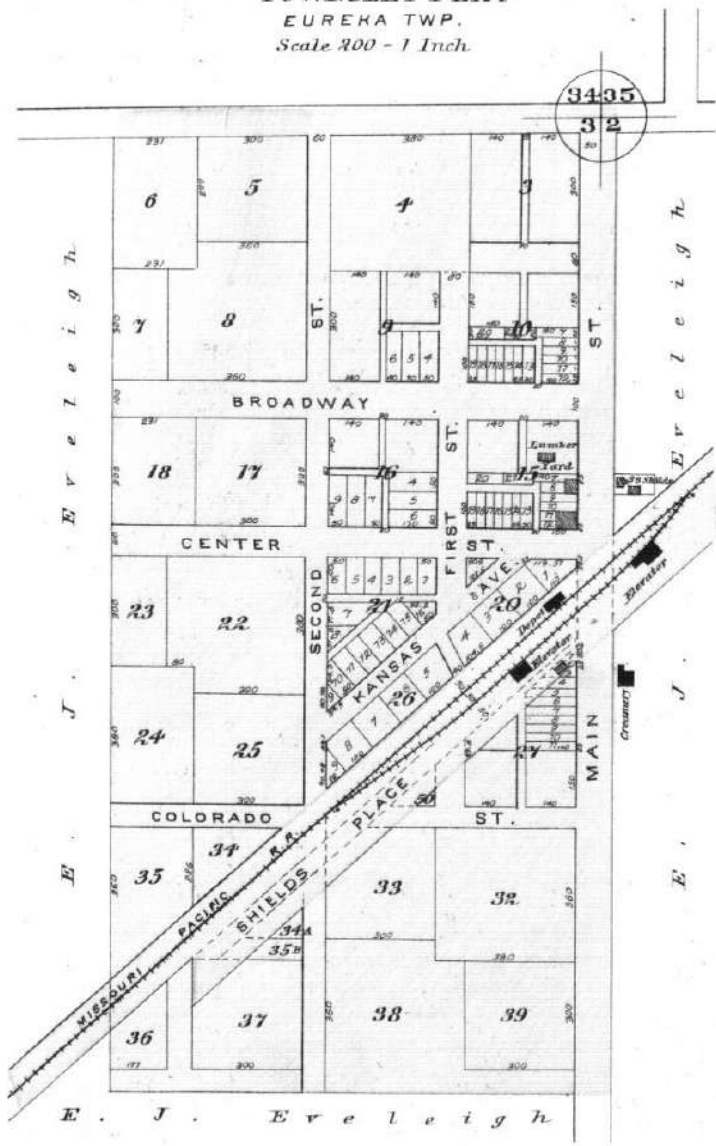
Township 16 South Range 14 West.

of the 6th Principal Meridian.



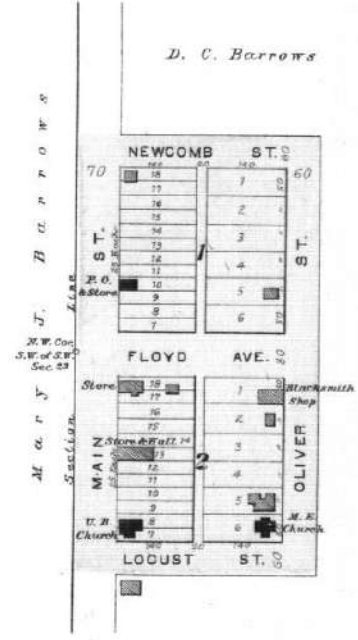
BOYD STATION

TOWNSLEY PLAT
EUREKA TWP.
Scale 200 - 1 Inch.



GALATIA

FAIRVIEW TWP.
Scale 200 ft. - 1 Inch.

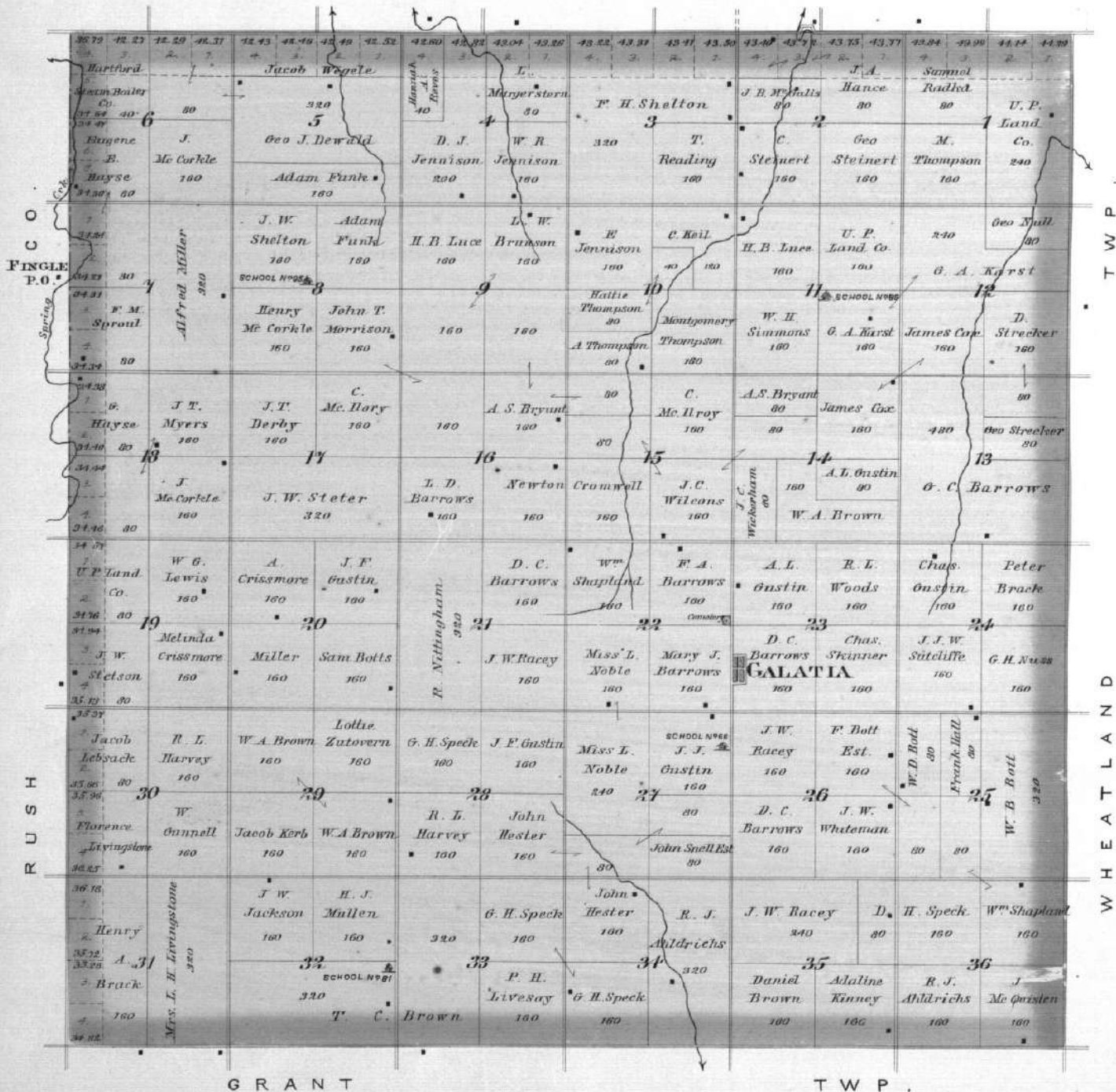


PLAT OF
FAIRVIEW

Scale 2 Inches to the Mile. Township 16 South. Range 15 West. of the 6th Principal Meridian.

RUSSELL

CO.



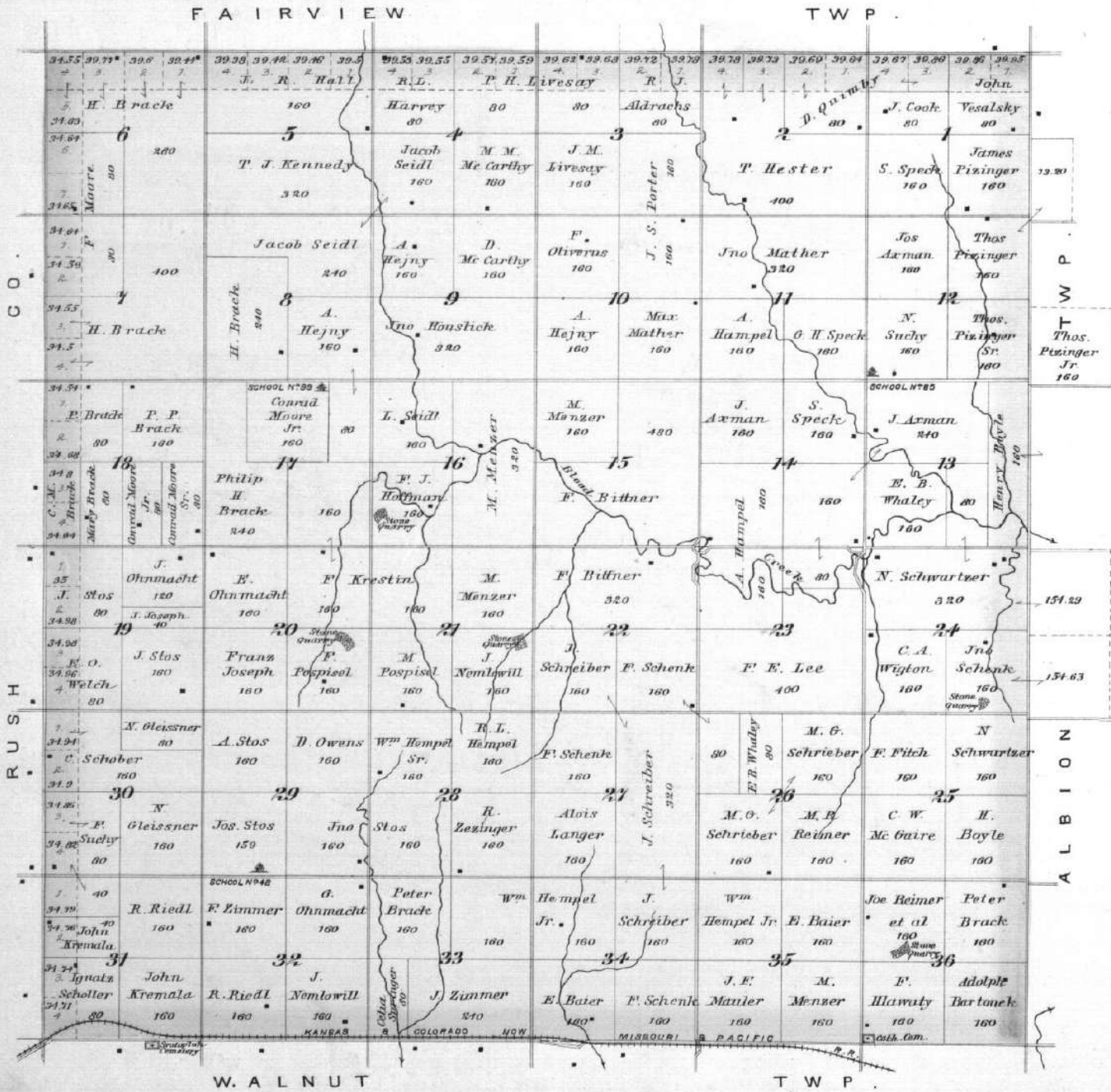
GRANT

TWP.

WHEATLAND TWP.

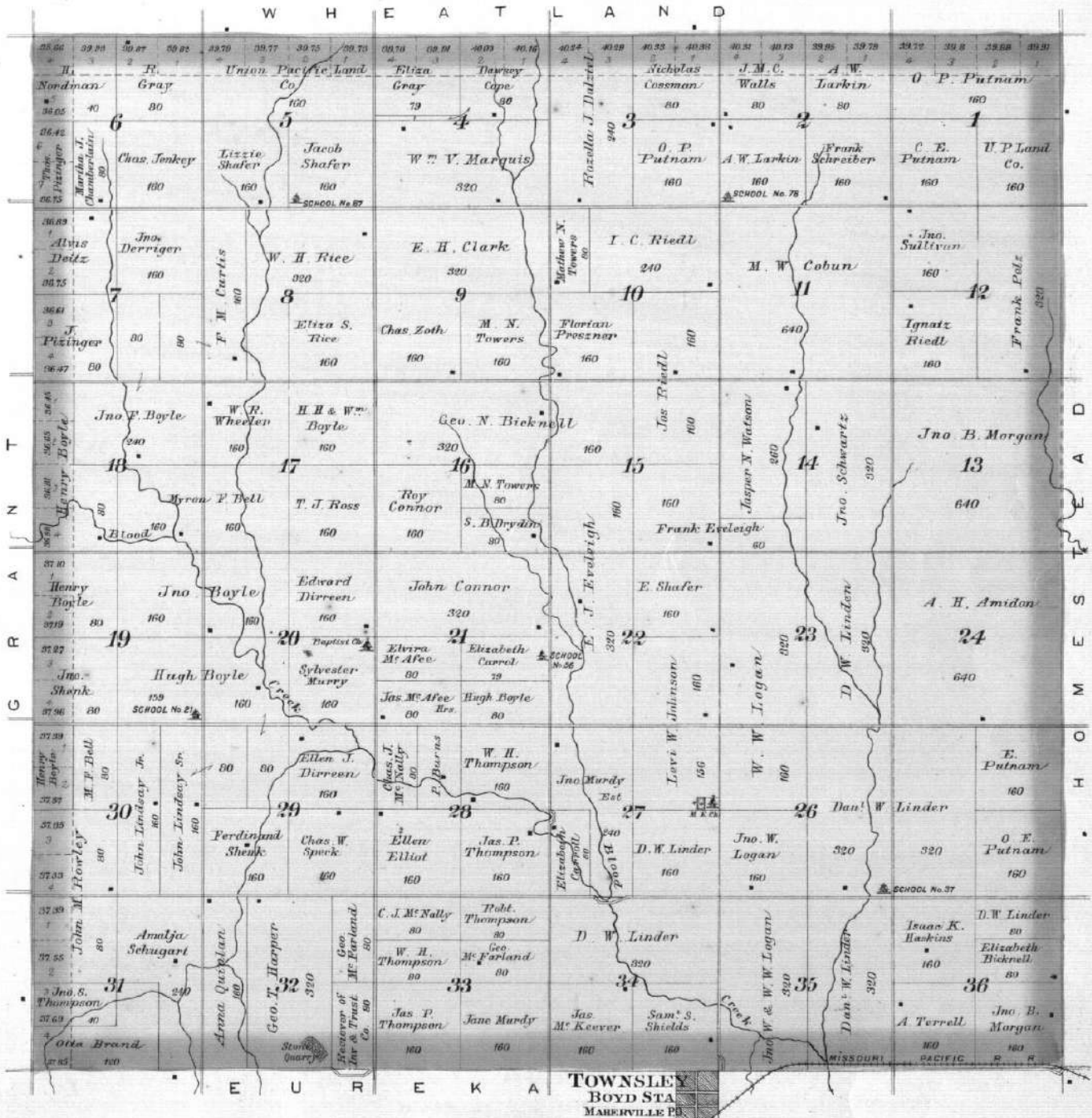
PLAT OF
GRANT

Scale 2 Inches to the Mile. Township 17 South. Range 15 West. of the 6th Principal Meridian.



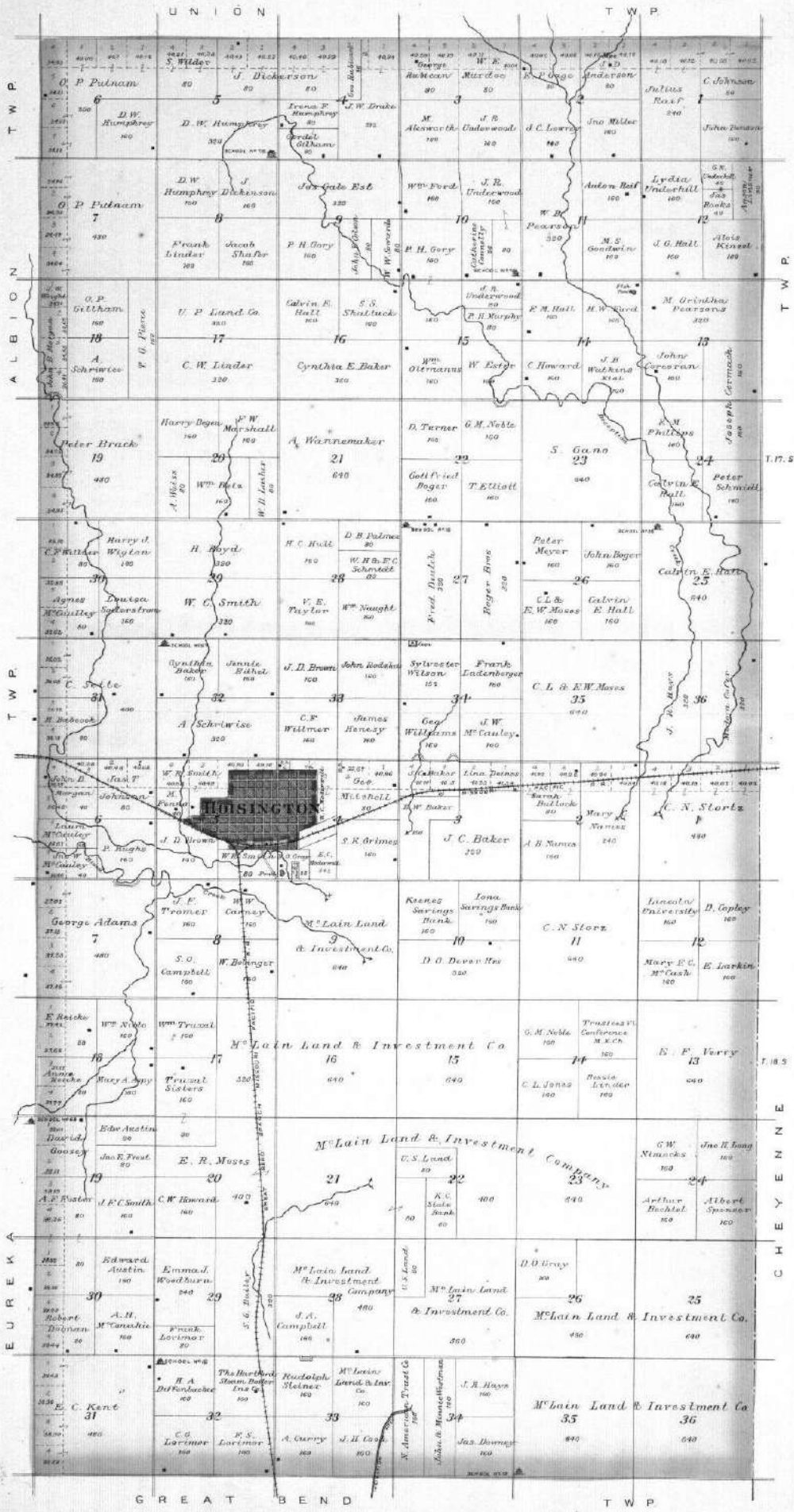
PLAT OF
ALBION

Scale 2 Inches to the Mile. Township 17 South. Range 14 West. of the 6th Principal Meridian.



PLAT OF HOME STEAD

Scale 2 Inches to the Mile. Townships 17 & 18 South, Range 13 West. of the 6th Principal Meridian

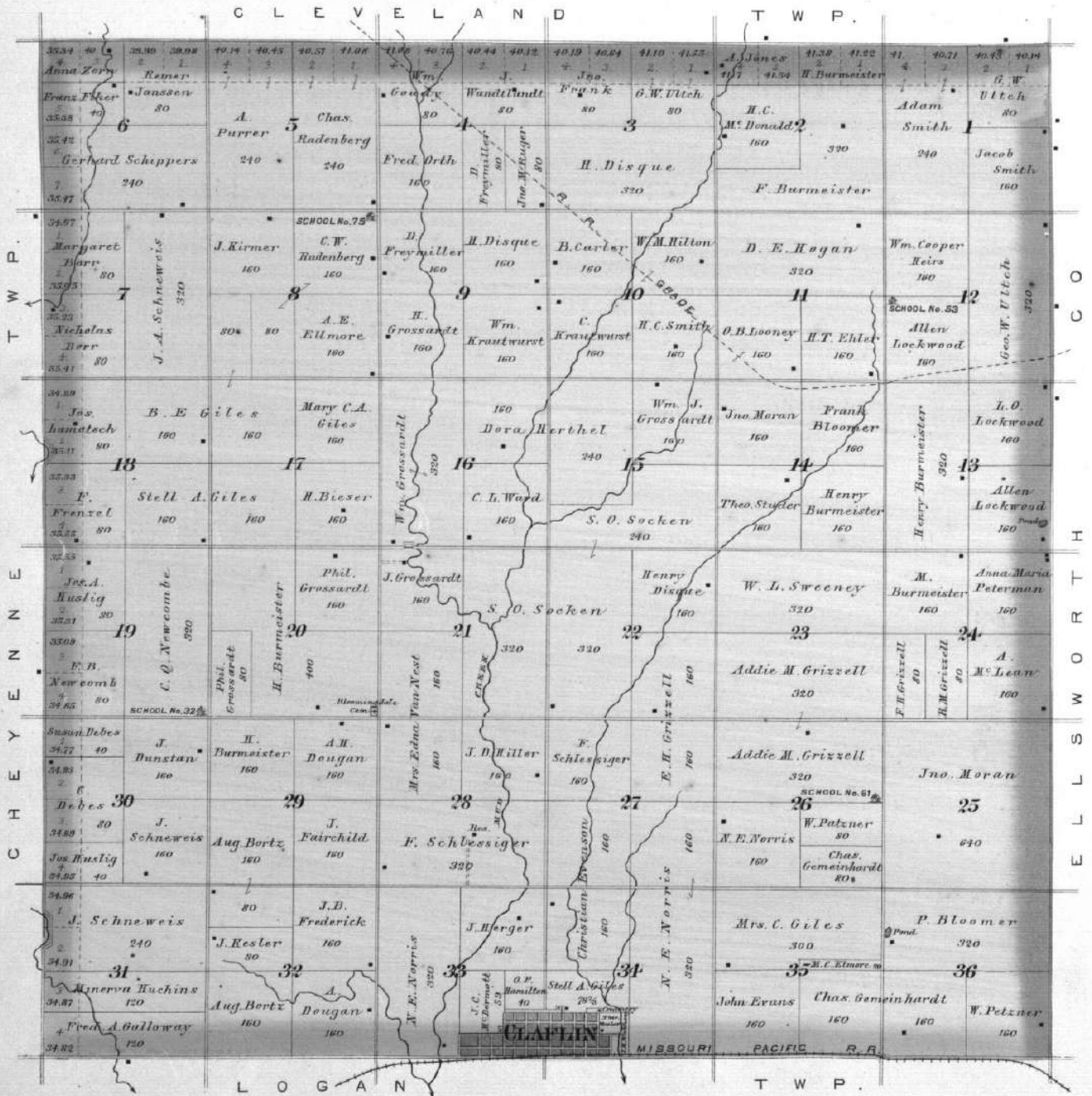


PLAT OF INDEPENDENT

Scale 2 Inches to the Mile.

Township 17 South, Range 11 West,

of the 6th Principal Meridian.



HOISINGTON

HOMESTEAD 1st W²
Scale 300 feet from each

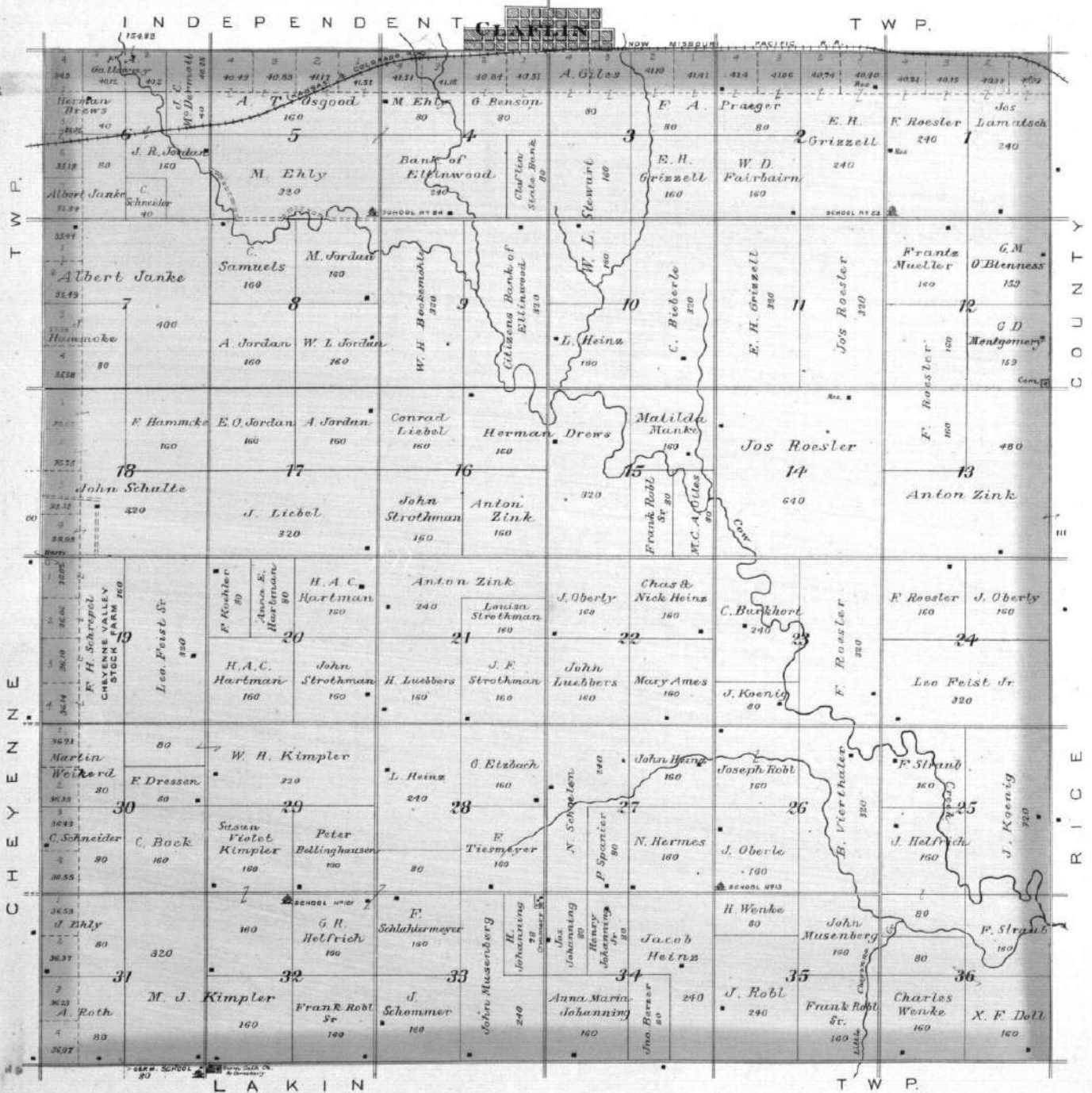


PLAT OF
LOGAN

Scale 2 Inches to the Mile.

Township 18 South. Range 11 West.

of the 6th Principal Meridian.

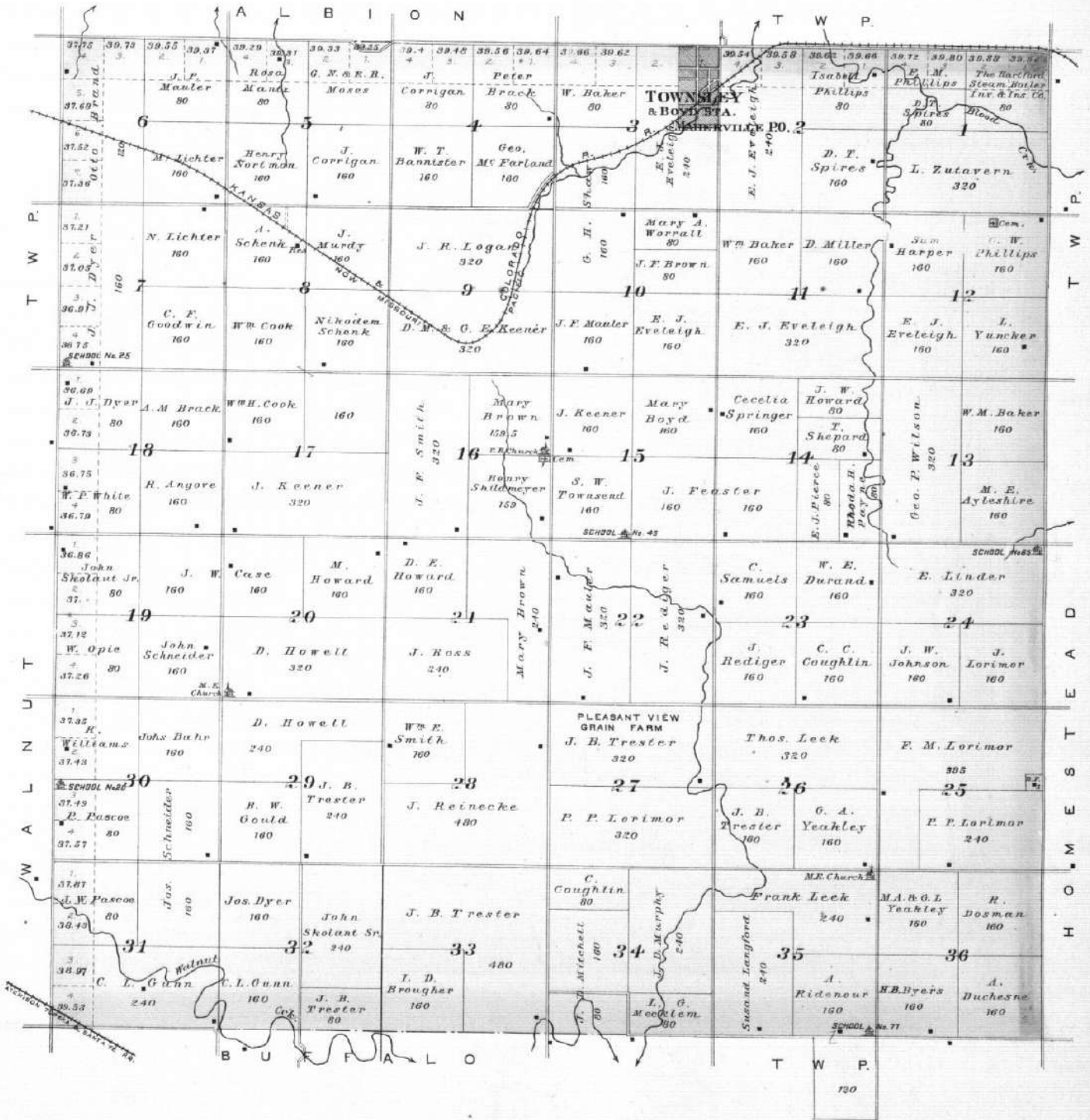


PLAT OF
EUREKA

Scale 2 Inches to the Mile.

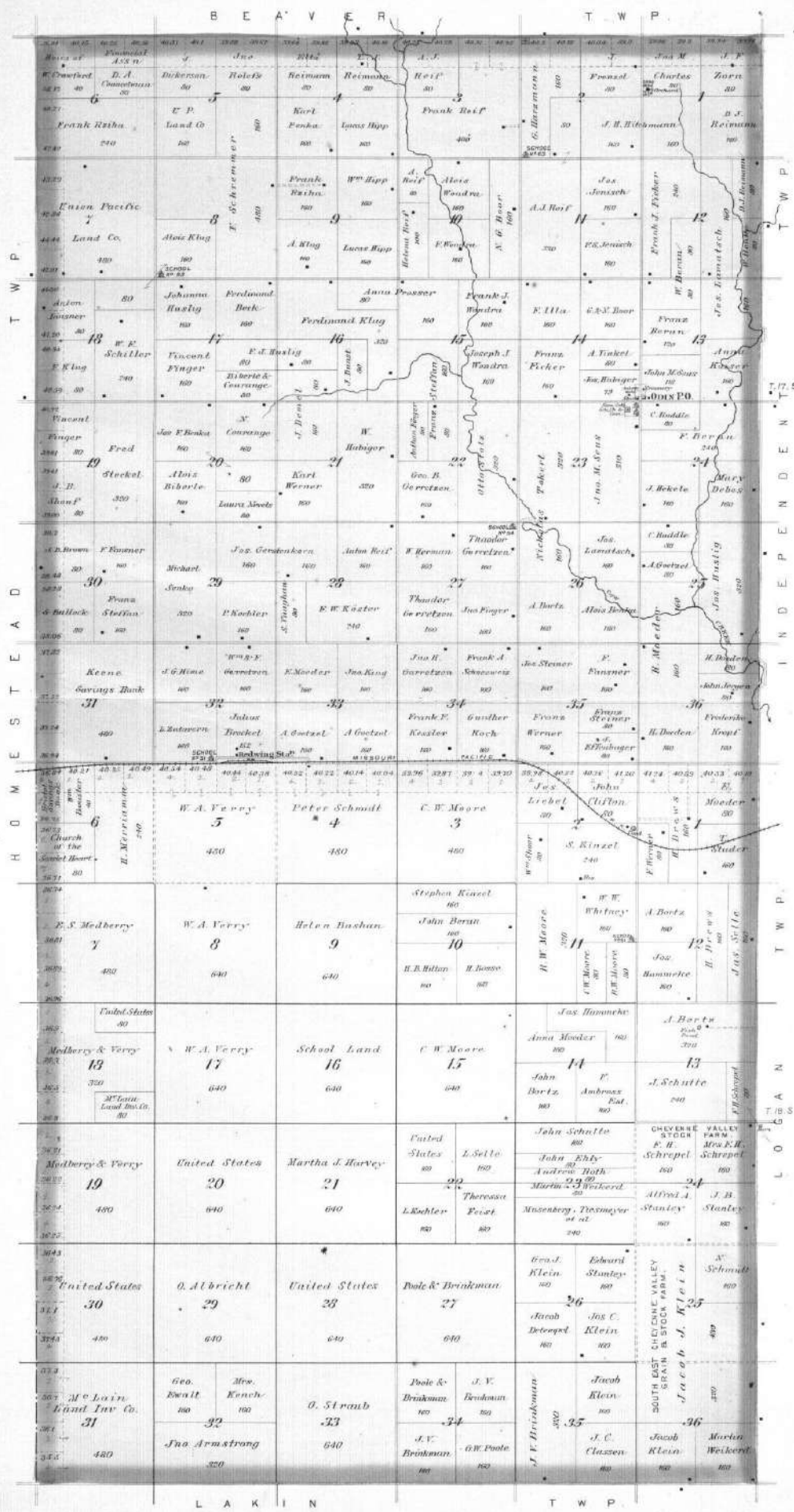
Township 18 South, Range 14 West.

of the 6th Principal Meridian.



PLAT OF CHEYENNE

Scale 2 Inches to the Mile. Townships 17 & 18 South. Range 12 West. of the 6th Principal Meridian.



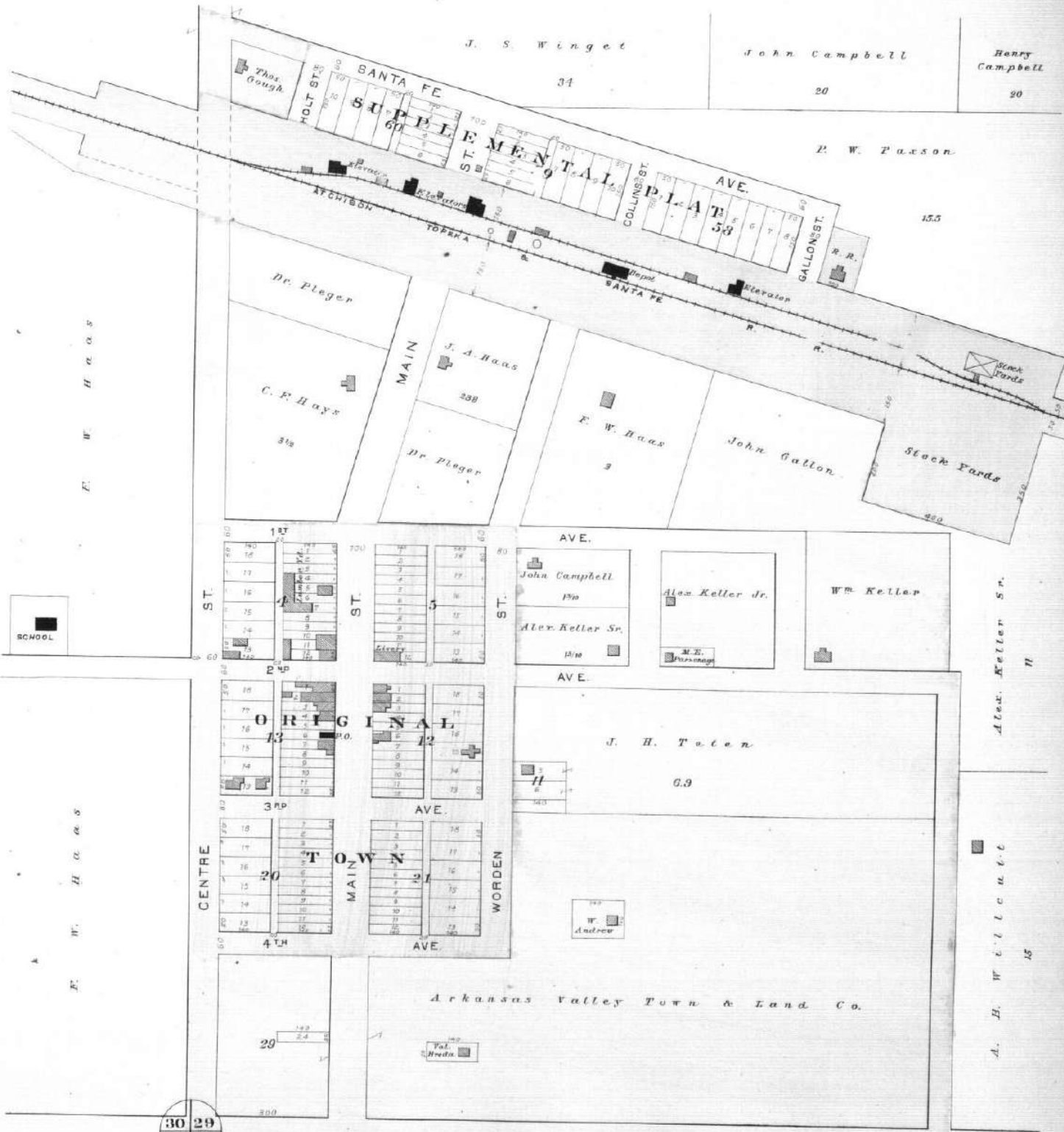
PLAT OF WALNUT

Scale 2 Inches to the Mile. Township 18 South. Range 15 West. of the 6th Principal Meridian.



ALBERT

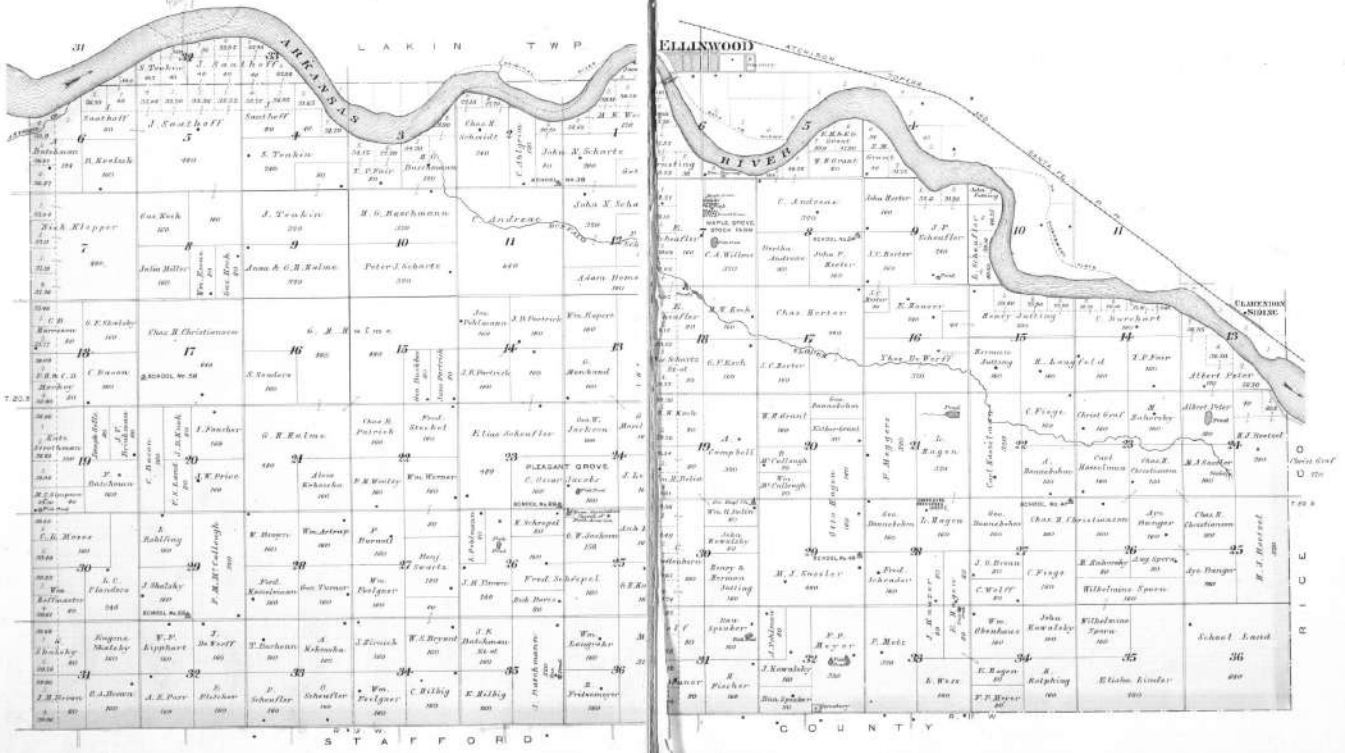
WALNUT TWP.
Scale: 200 ft. = 1 inch



30 29
31 32

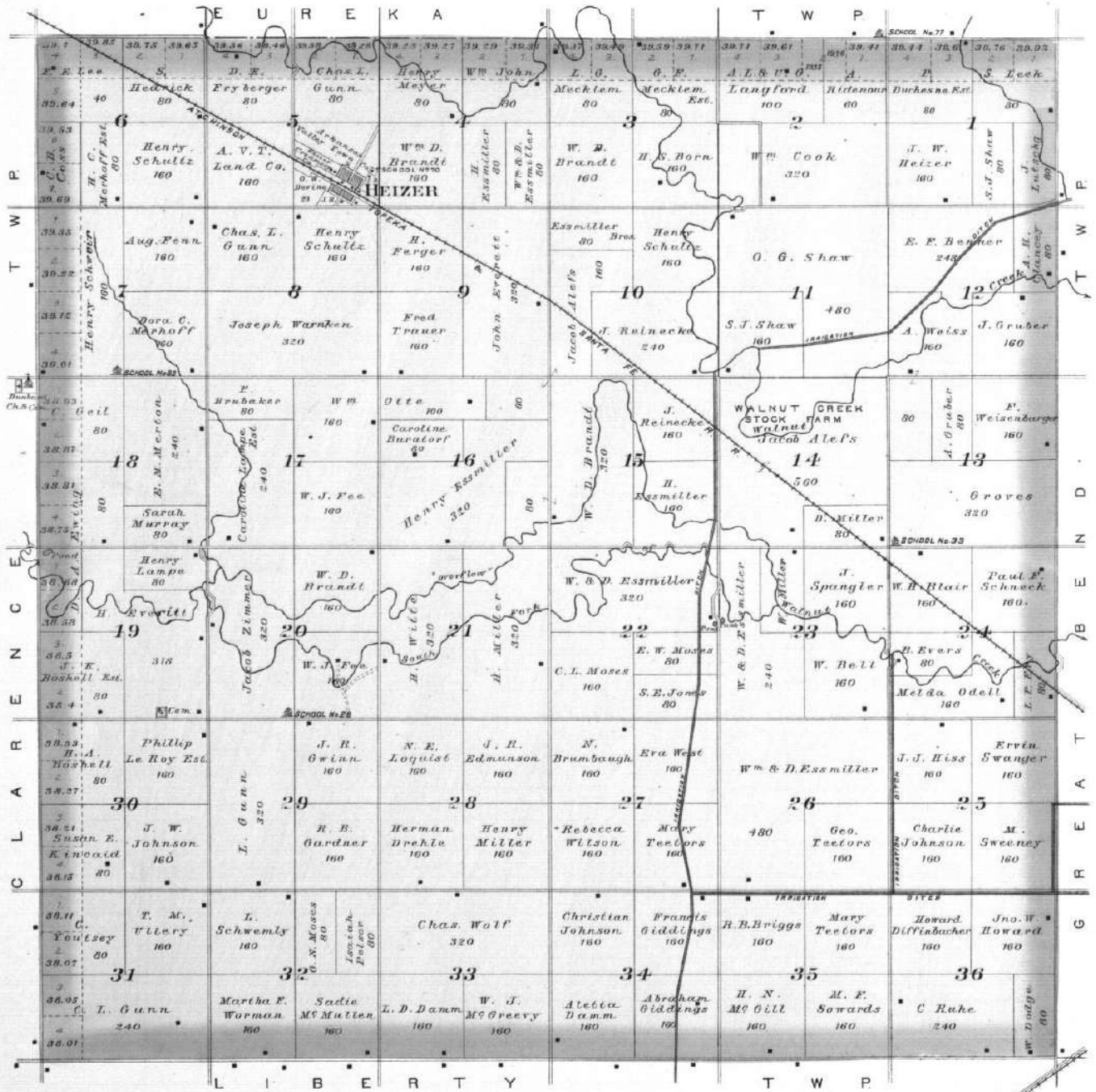
PLAT OF
COMANCHE

Scale 2 Inches to the Mile Townships 19&20 South, Ranges 11&12 West, of the 6th Principal Meridian



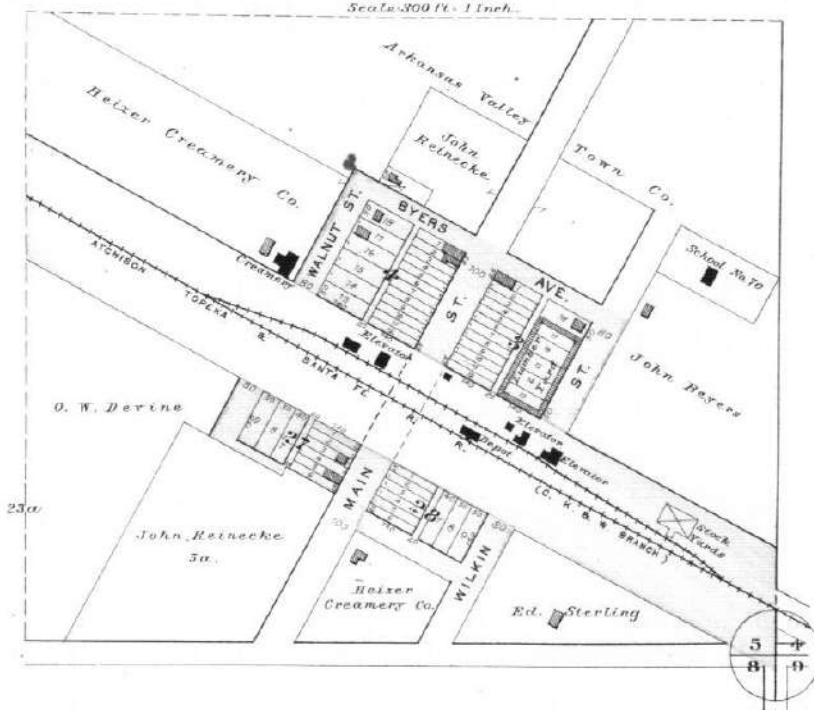
PLAT OF
BUFFALO

Scale 2 Inches to the Mile. Township 19 South, Range 14 West. of the 6th Principal Meridian.



HEIZER

BUFFALO TWP.
Scale 300 ft. = 1 inch.



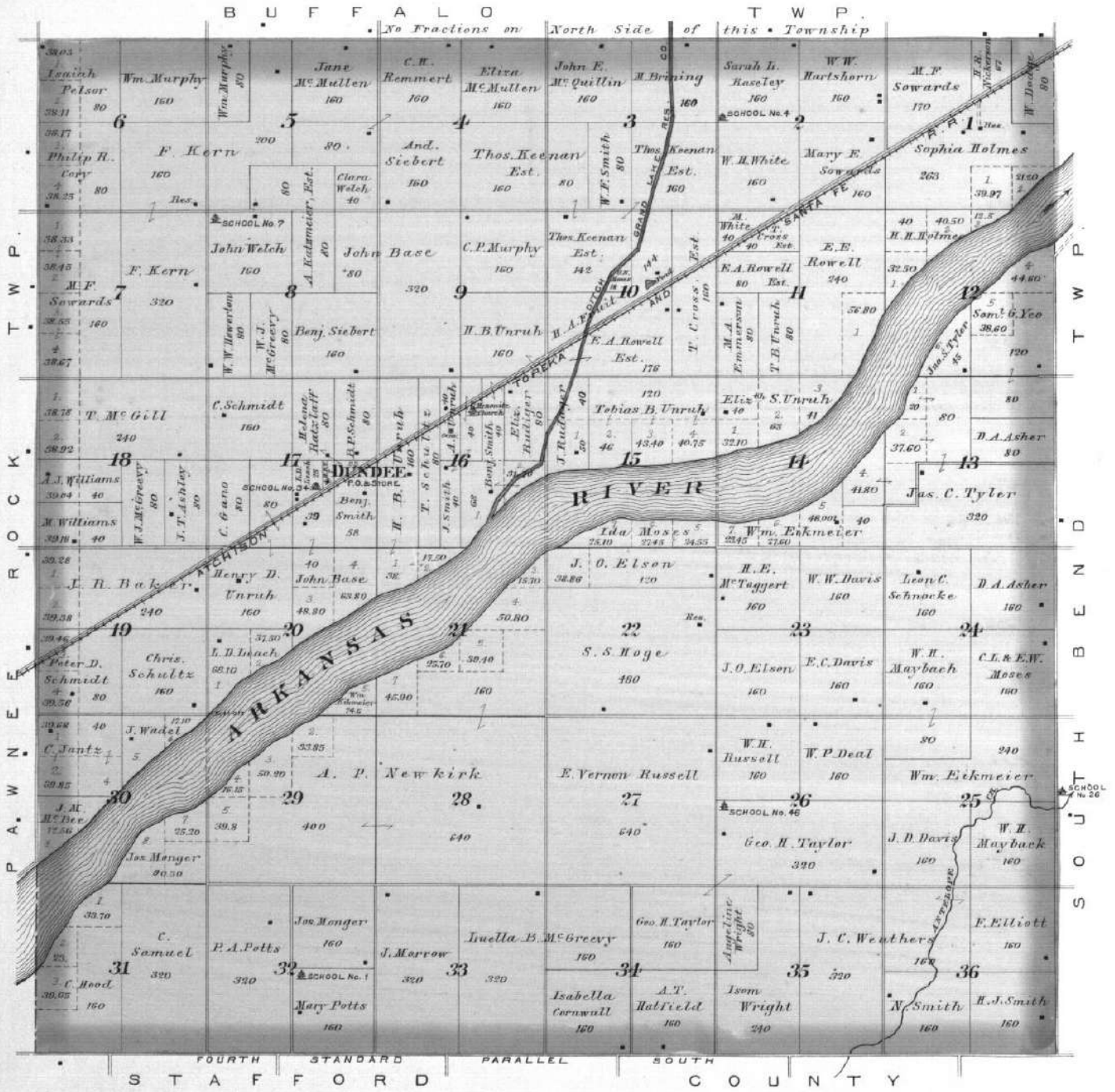
PLAT OF
GREAT BEND

Scale 2 Inches to the Mile Township 19 South, Ranges 12 & 13 West, of the 6th Principal Meridian



PLAT OF
LIBERTY

Scale 2 Inches to the Mile. Township 20 South, Range 14 West, of the 6th Principal Meridian.



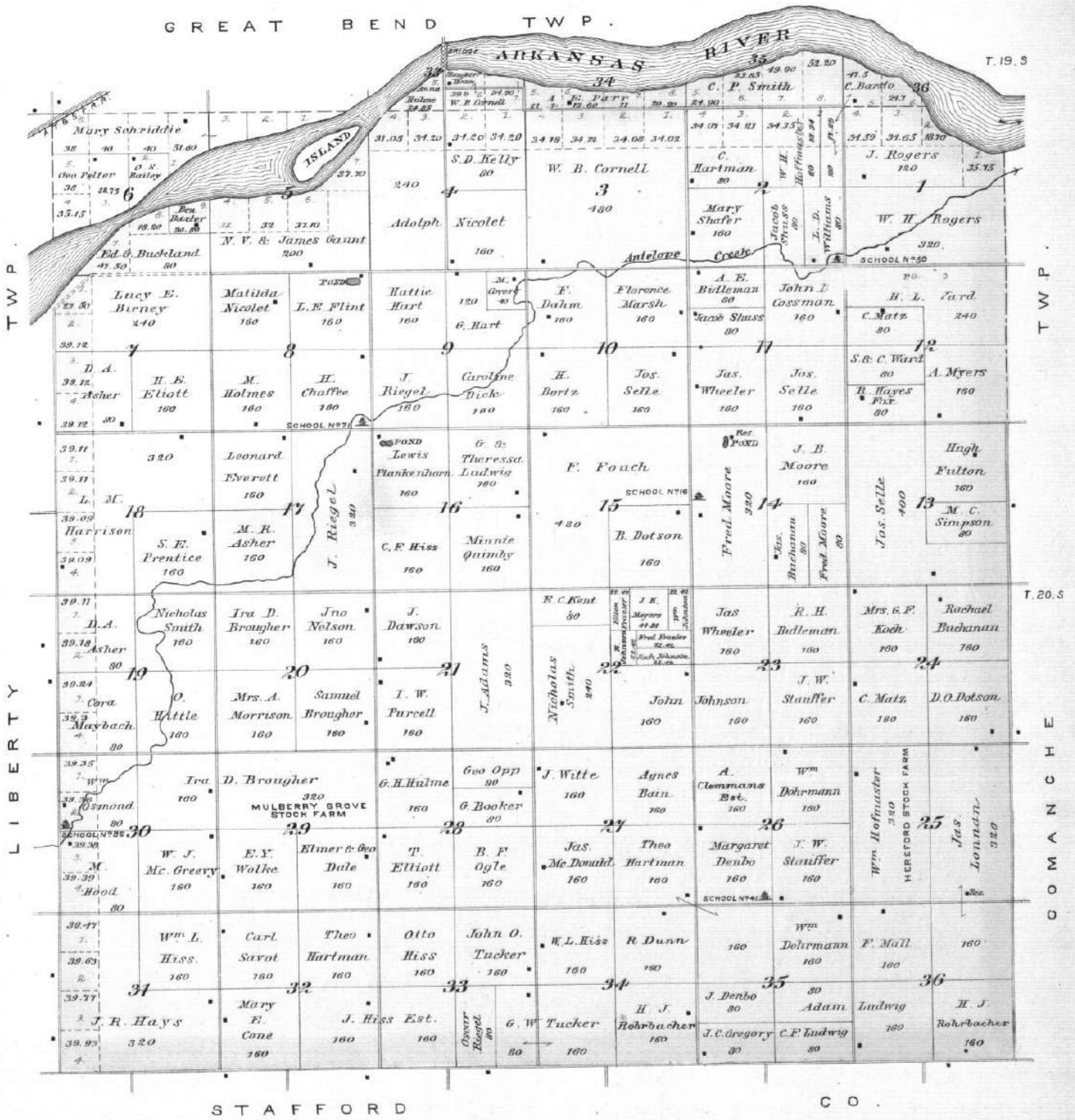
PLAT OF SOUTH BEND

Scale 2 Inches to the Mile.

Township 20 South, Range 13 West.

of the 6th Principal Meridian.

G R E A T B E N D T W P .



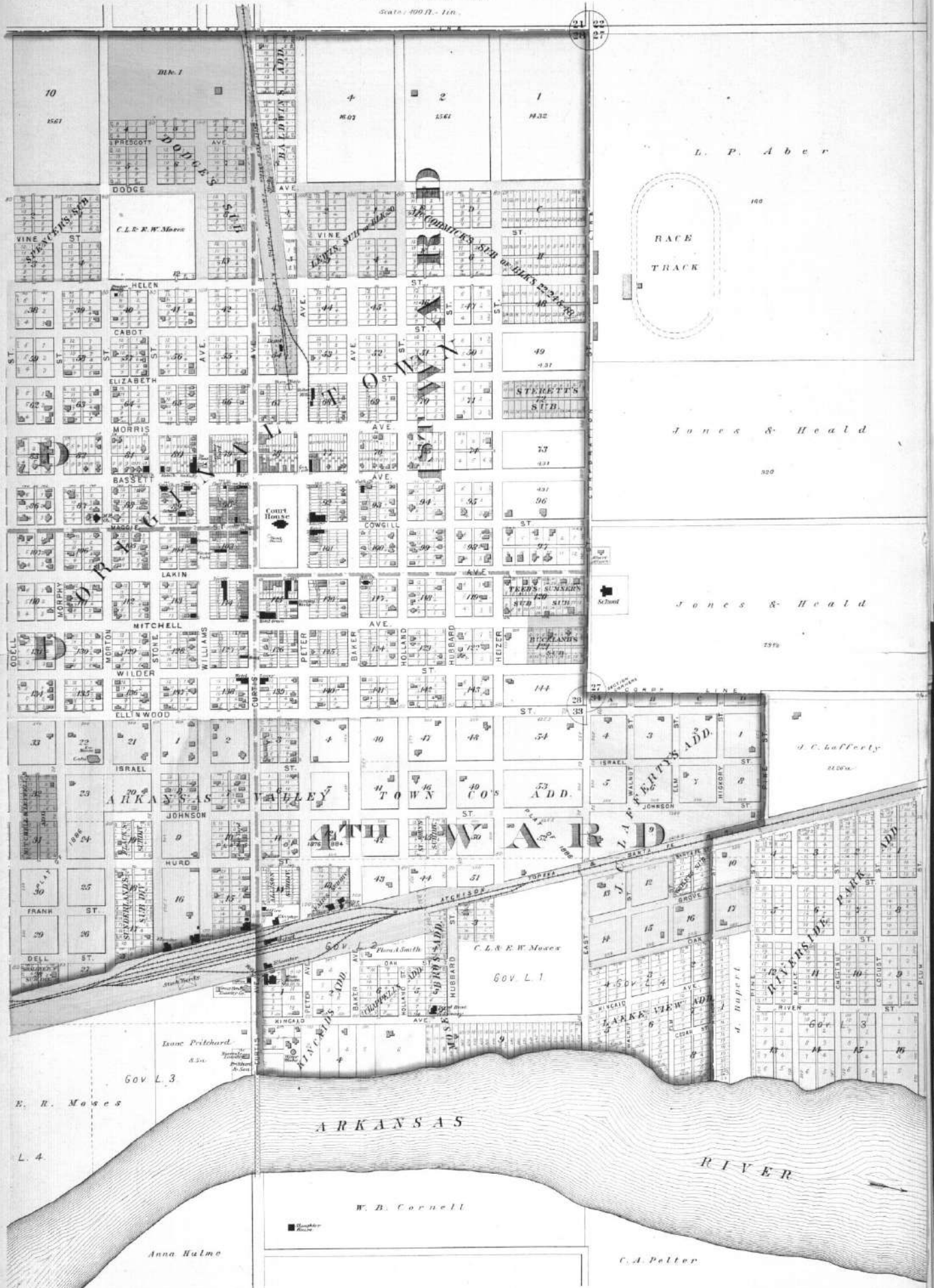
S T A F F O R D

C O .

EAST PART OF
GREAT BEND

GREAT BEND TWP.

Scale: 100 ft. = 1 in.



PLAT OF PAWNEE ROCK

Scale 2 Inches to the Mile.

Township 20 South. Range 15 West.

of the 6th Principal Meridian.

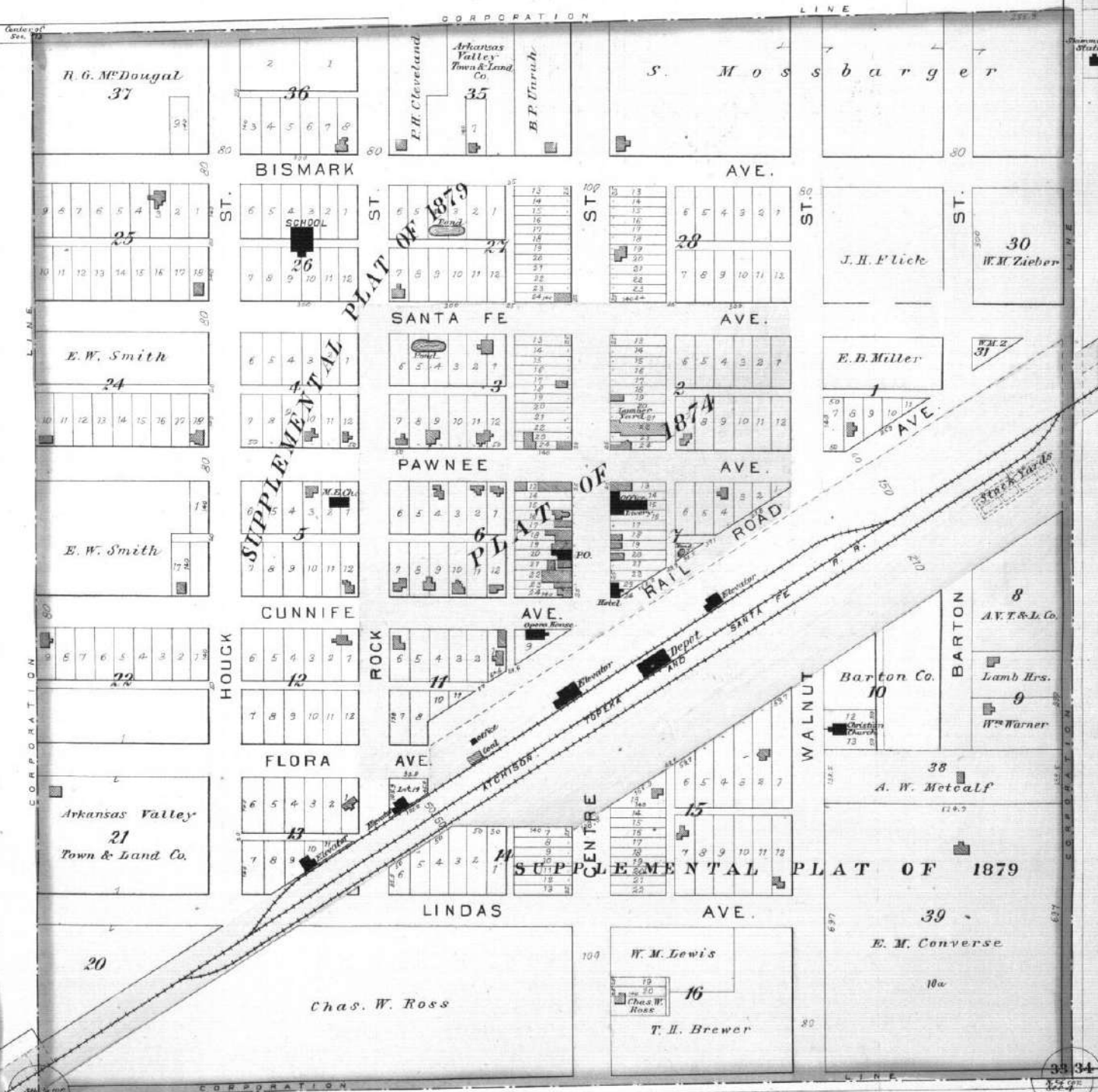
C L A R E N C E										T W P.											
40.00 P. H. Dircks 5 40.01 40.02 40.03 40.04 40.05 40.06 40.07	40.32 2 A. Dircks 80 6	50.53 2 A. Dircks 80 5	40.74 2 A. Dircks 80 4	40.8 4 A. Dircks 160 3	40.72 3 A. Dircks 160 2	40.64 2 A. Dircks 160 1	40.56 1 A. Dircks 160 +	40.55 4 B. H. Unruh 160 3	40.57 3 B. H. Unruh 160 2	40.73 1 B. H. Unruh 160 1	40.63 4 D. Bosse 160 5	40.58 5 D. Bosse 160 4	40.42 2 D. Bosse 160 3	40.29 1 D. Bosse 160 2	40.24 4 Chas. Kemmert 80 3	10.20 3 Fred. H. Ewing 80 2	40.33 2 Fred. H. Ewing 80 1	40.28 1 Fred. H. Ewing 80 +	40.25 4 Wm. Tutor 80 3	40.15 2 F. R. Krum 80 1	
Sam ^l P. Smith 240				C. S. Schultz 160				D. B. Unruh 105 Francis & Amelia Unruh 55		W. B. Cameron 320		H. S. Baird 160		A. R. Unruh 80 Wm. Mull 80		B. P. Unruh 160		S. C. Schultz 160			
40.08 1 J. P. Dircks 80 10.02 30.98 A. Dircks 80 30.84	A. J. Deckert 320		J. R. Baker 160		C. Vosburg 160		Cornelius Schmidt 240		H. C. Schultz 160		D. G. Bird 240		J. A. Schmidt 160		B. P. Unruh 160		B. P. Unruh 160		Wm. Mull 160		
A. J. Deckert 320				A. Dircks 160		Beng. C. Unruh 160		C. S. Schultz 160		C. Unruh 160		J. Tarpy 240		S. J. Schmidt 160		J. Dowdall 160		L. Nairn 160		P. J. Smith 80 E. G. Unruh 80	
J. G. Gonsdale 40.07 40.07 40.07 40.07 40.07		M. Gilmore 160		J. R. Baker & Geo. E. Gano 80		Susie Unruh 160		Mennonite Ch. & Jacob P. Wedel 80		Peter J. Deckert 160		J. Kelley 160		Jno. C. Bauer 240		L. Nairn 160		Geo. Bauer 80		P. C. Unruh 160 S. E. Gilbert 160	
Wm. H. & T. C. Schmidt 160		J. B. Smith 160		J. P. Wedel 320		J. P. Wedel 230 Racine Co.		Benj. E. Unruh 160		M. Dahn 80		Geo. Bauer 160		H. C. Gilbert Est. 160		E. W. Smith 160		S. Williams 160			
W. E. Hayward 160		E. W. Smith 160		J. H. Dircks 160		Benj. P. Unruh 160		J. Wedel 160		J. A. Schmidt 80		J. Rose 80		T. H. Brewer 320		J. J. Schmidt 240		Lynn Ashby 80			
W. E. Hayward 160		Henry Ratzlaff 160		F. T. Belt 160		F. T. Belt 320		And. R. Unruh 80 H. Unruh 80		E. Bowman Est. 160		J. A. Schmidt 160		Geo. Holland 160		Geo. Holland 160		Geo. Holland 80 F. W. Smith 80 H. W. Smith 80 H. W. Smith 80			
J. E. Callfrey 80		M. O. Beyard 160		Peter A. R. Unruh 160		Chas. W. Ross 160		T. G. Unruh 160		Laura Reynolds 160		Geo. Heynes Est. 160		Geo. Holland 160		J. W. Smith 80 F. W. Smith 80 H. W. Smith 80		C. J. French 160			
J. D. Hochrdoon 80		J. B. Unruh 160		B. J. Kochiv 160		Albert Lile 160		F. T. Belt 310 P. Unruh 310		R. G. Mc Dougal 80		W. H. Bowman 240		PAWNEE ROCK HUBBARD & STOCK FARM W. M. Ziehl 160		E. B. M. Hart 80 H. P. Unruh 80		Albert Foster 160		J. M. Mc Bee 80 W. S. Mc Dougal 40 37.75	
E. W. Smith 80		S. Winkberger 80 Chas. Gano 80		F. T. Belt 160		Mary J. Holt 160		Henrietta Bowman 160		S. P. Lettner 160		P. Bloom 240 BLOOMDALE SHORT HORN DURHAM STOCK FARM		Benj. P. Unruh 80		John J. Schmidt 160		J. T. Brandy 80 Bates 385			
J. R. Baker 160		Geo. Heynes Est. 160		Lucy Wilson 160		Foster & Mc Dougal 150		Albert Foster 159		W. H. Bowman 160		T. G. Unruh 160		C. Gano 160		Sarah E. Steward 120 33.75		J. T. Dirck 80 33.75			



PAWNEE ROCK

PAWNEE ROCK TWP.

Scale: 200 ft. = 1 in.



19 20
30 29

20 21
29 28

Atchison, Topeka & Santa Fe R.R.
Company

G. C. Rothman

Phoebe A. Scott

C. L. & F. W. Moore
412

Sarah Kentall
5

12

10

J. Reebart

Emma Kinneth

E. M. & F. V. Russell

YOUNG'S BUILDING

SPENCE'S BLDG

The Central Normal College

COLLEGE

2ND

WYAND

3RD

WYAND

HEIZER PARK

3RD

WYAND

WYAND

WEST PART OF GREAT BEND

GREAT BEND TWP.

Scale: 400 FT. = 1 IN.

J. F. Tilton

IRLANDS

Francis Butler

E. R. Moore

GOV. L. 4

PLAT OF
CLARENCE

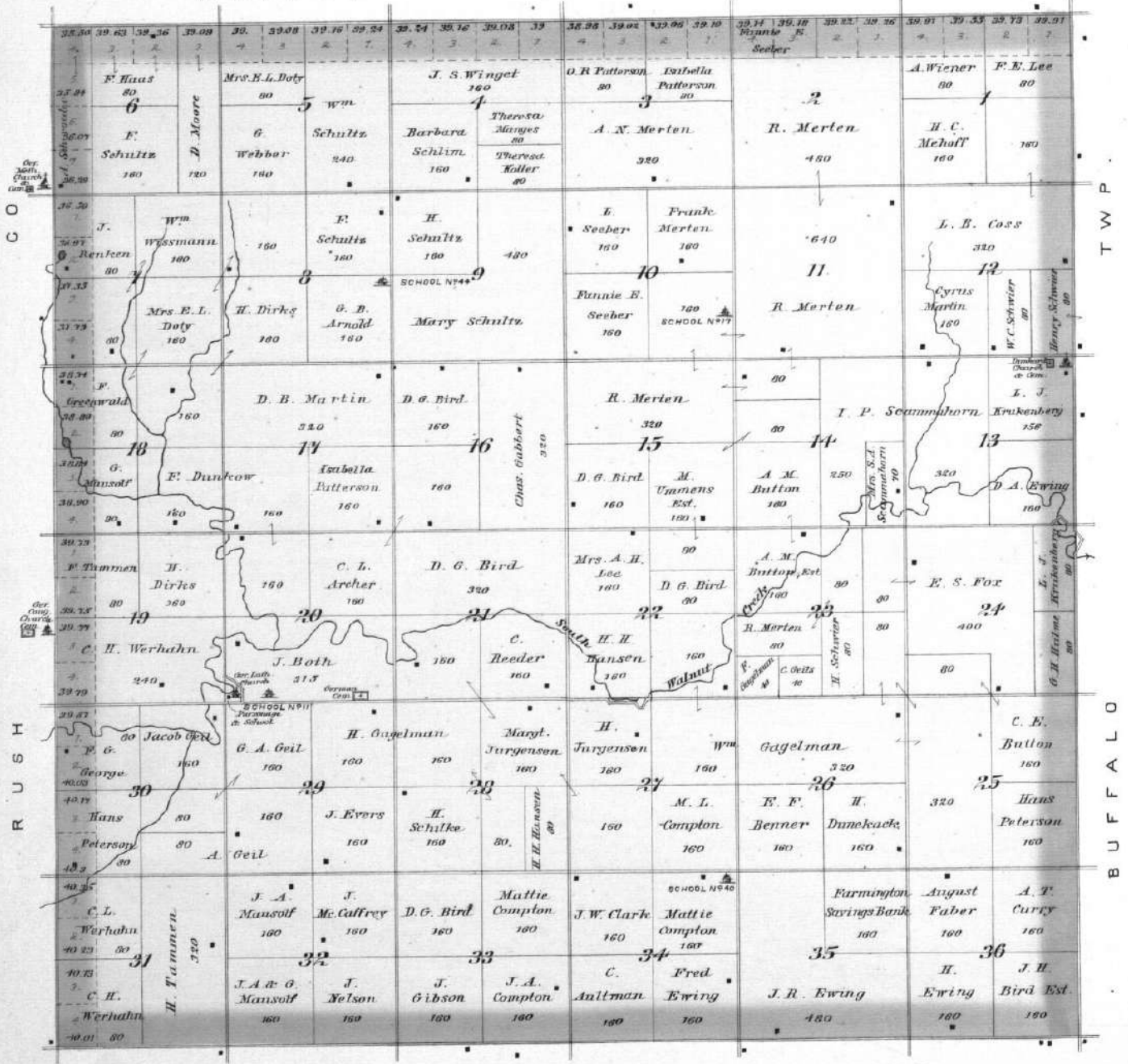
Scale 2 Inches to the Mile.

Township 19 South, Range 15 West.

of the 6th Principal Meridian.

W A L N U T

T W P .



P A W N E E R O C K

T W P .

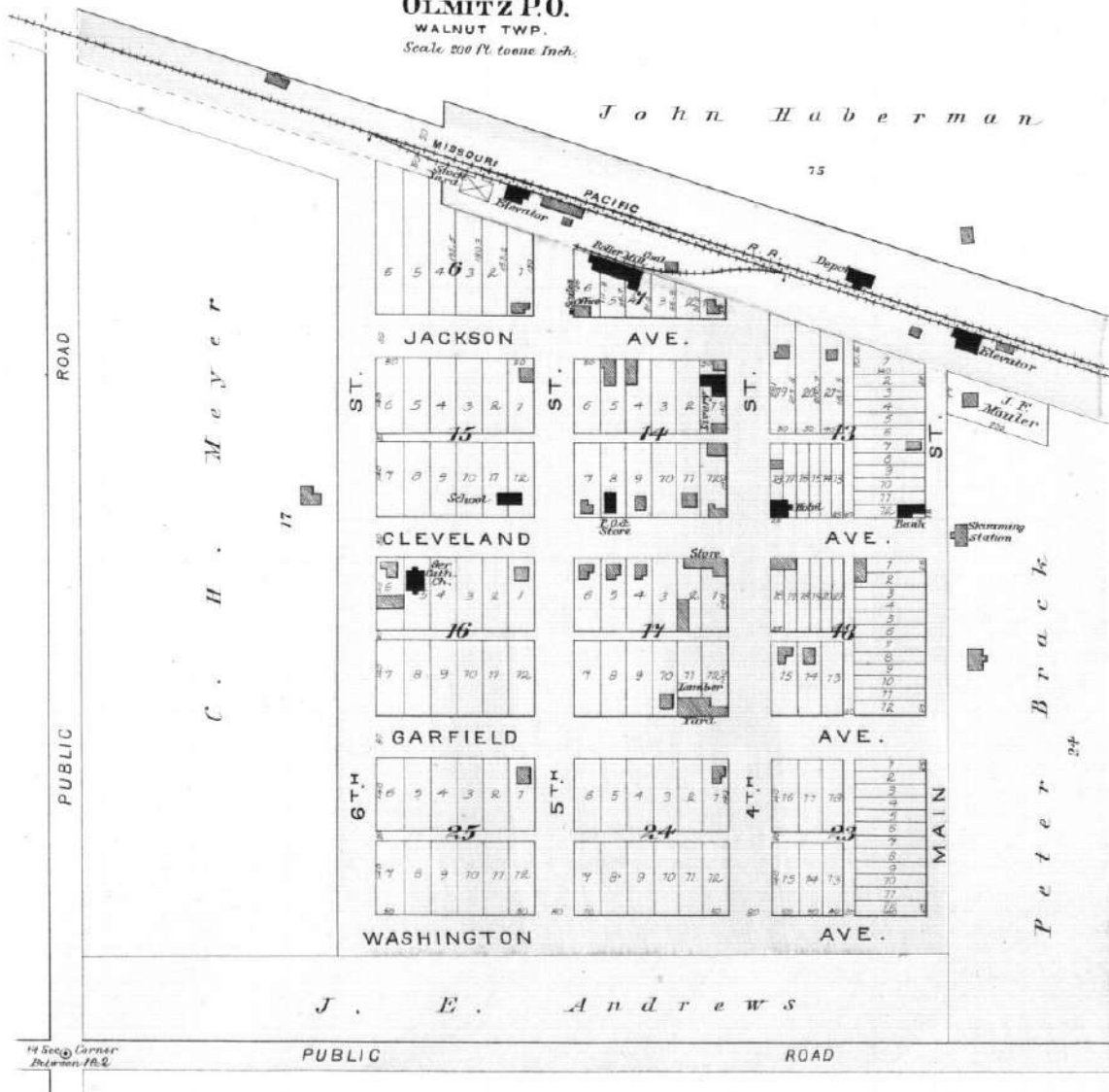
OLMUTZ

OLMITZ P.O.

WALNUT TWP.

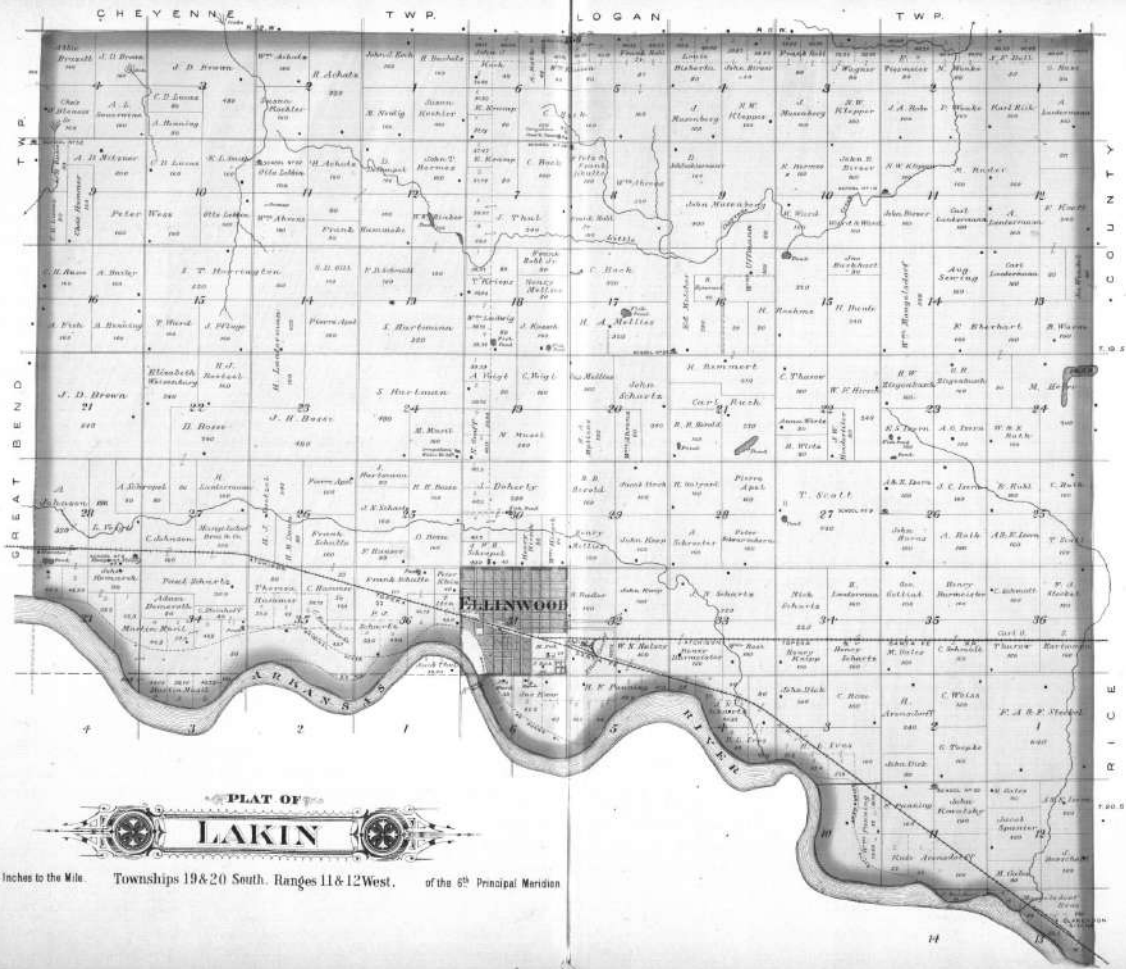
Scale 200 Ft. to one Inch.

John Huberman



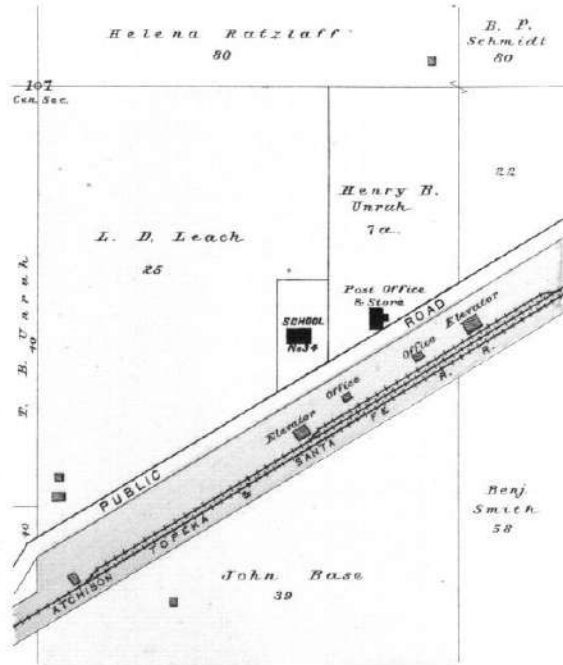
J. E. Andrews

14 Sec. Corner Between 16 & 17



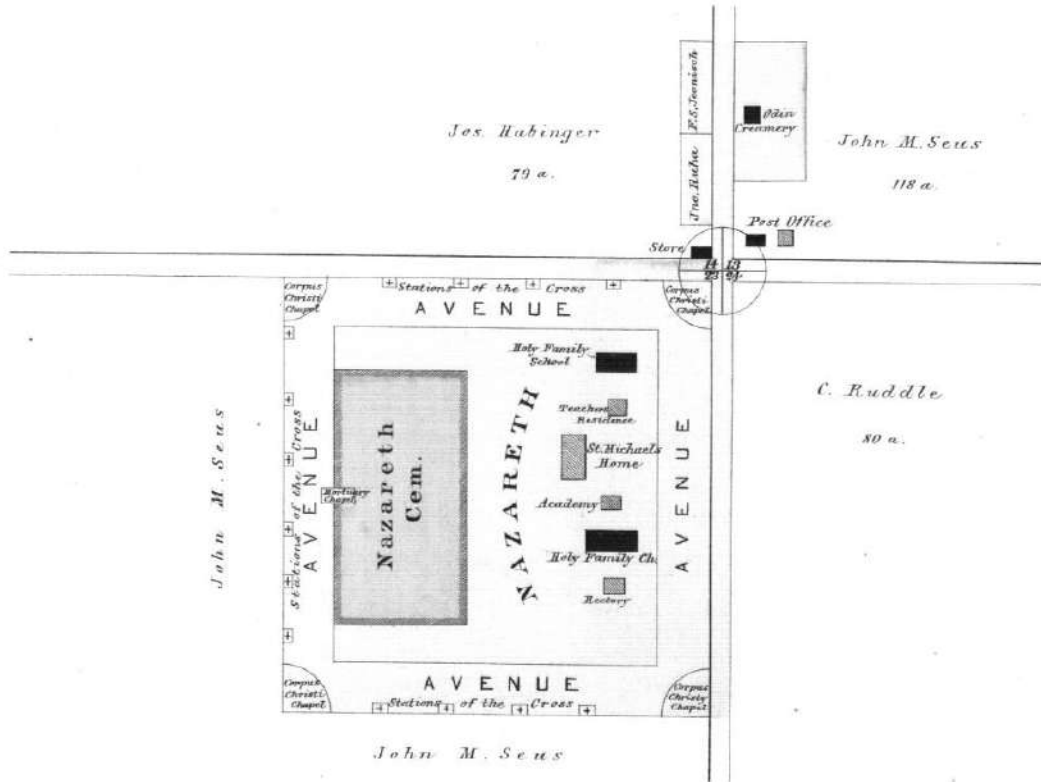
DUNDEE

LIBERTY TWP.
Scale: 20 Rods = 1 Inch.



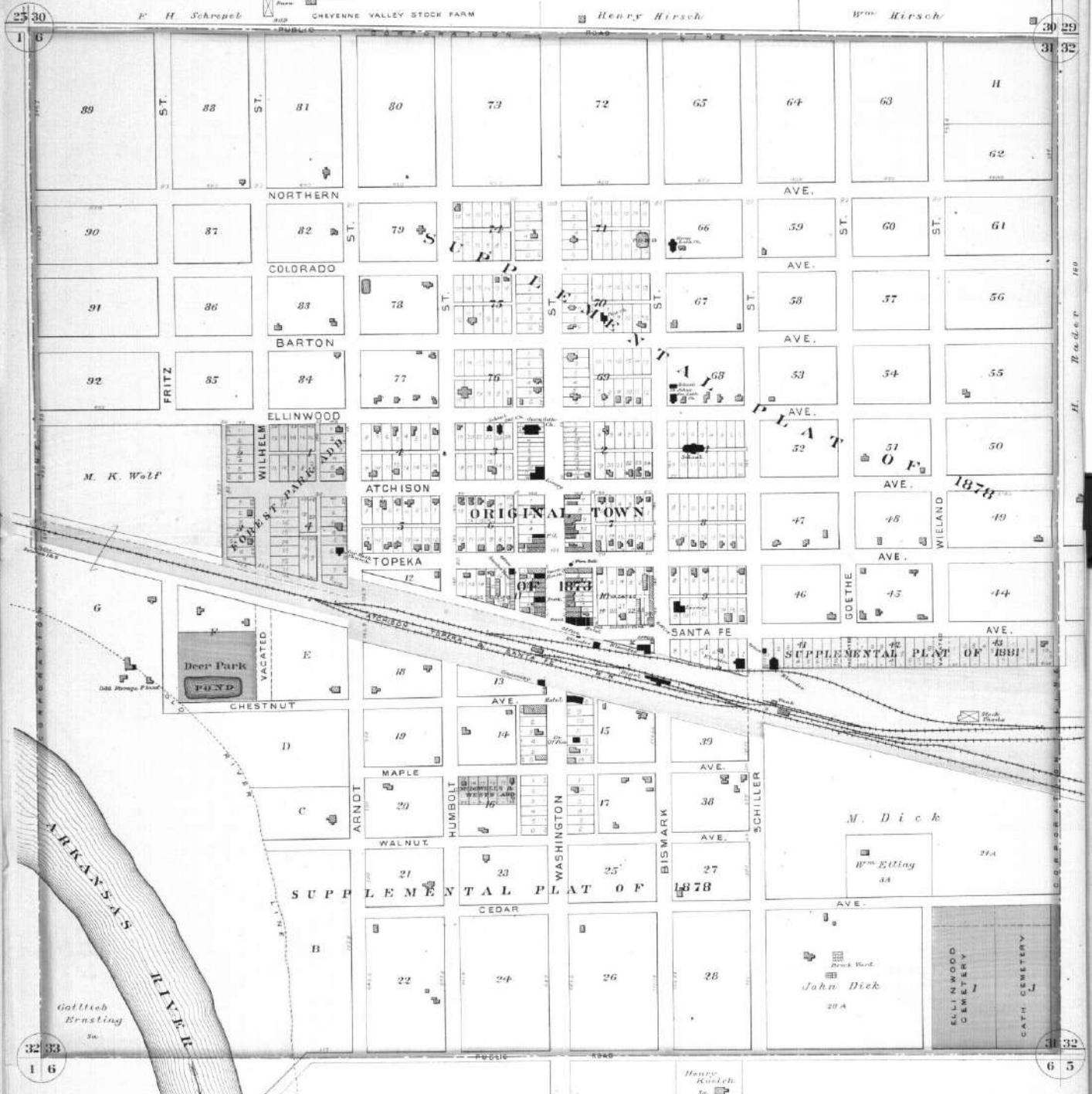
ODIN P.O.

CHEYENNE TWP.
Scale 40 Rods to one Inch.



ELLINWOOD

LAKIN TWP.
Scale 300 Ft. to one Inch.



R. 16. S. 30. T. 44. N.