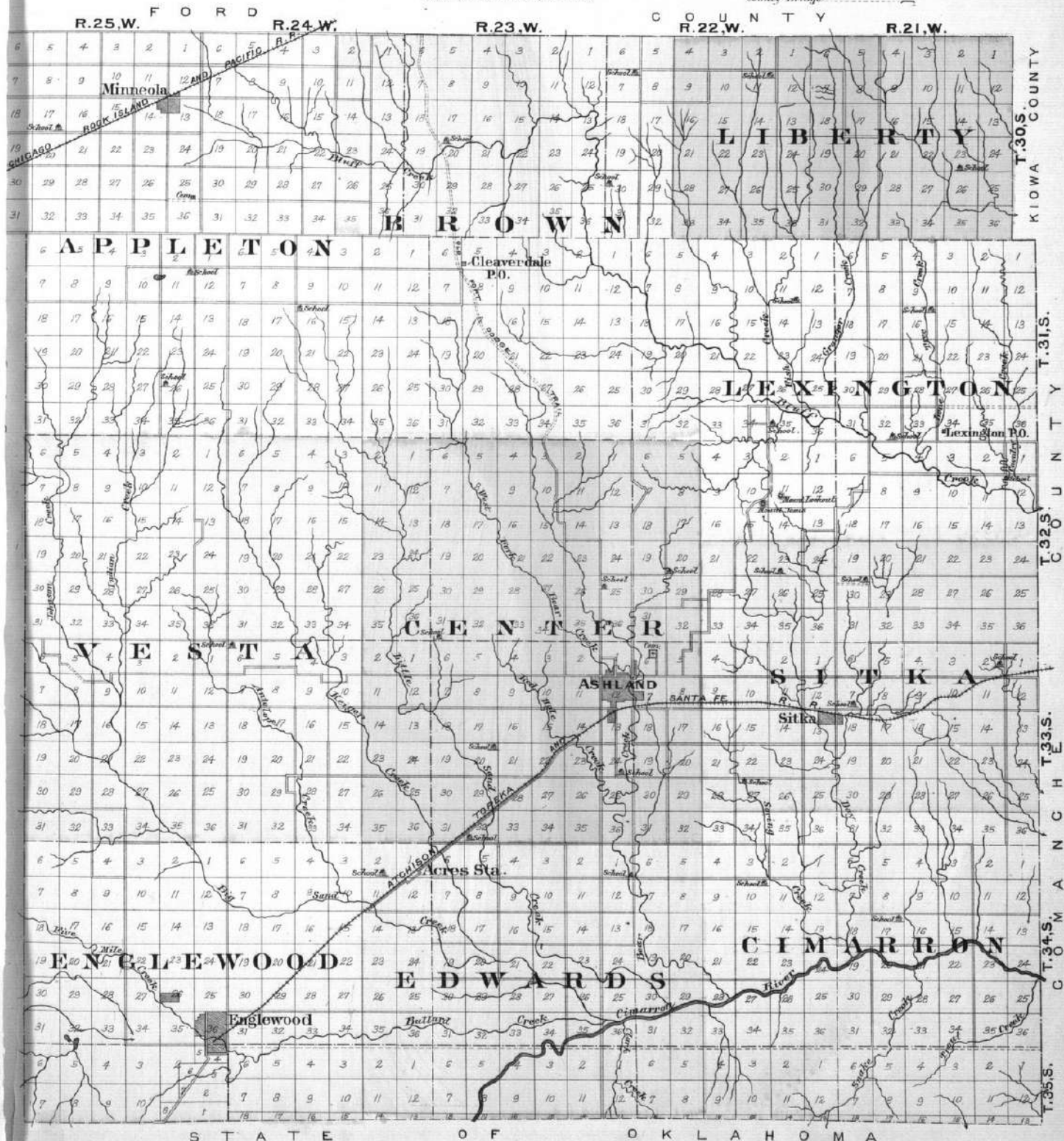


OUTLINE MAP OF CLARK COUNTY

KANSAS

Scale $\frac{1}{32}$ of an Inch to 1 Mile.

- EXPLANATION**
- Section Line.....
 - Farm or Lot Line.....
 - Wagon Road.....
 - Railroad.....
 - Creeks & Springs.....
 - Houses.....
 - Churches.....
 - School Houses.....
 - Adjacent Lands owned by same party connected by a hook, thus.....
 - Post Office.....
 - Coal, Lead or Zinc Mine.....
 - County Bridge.....



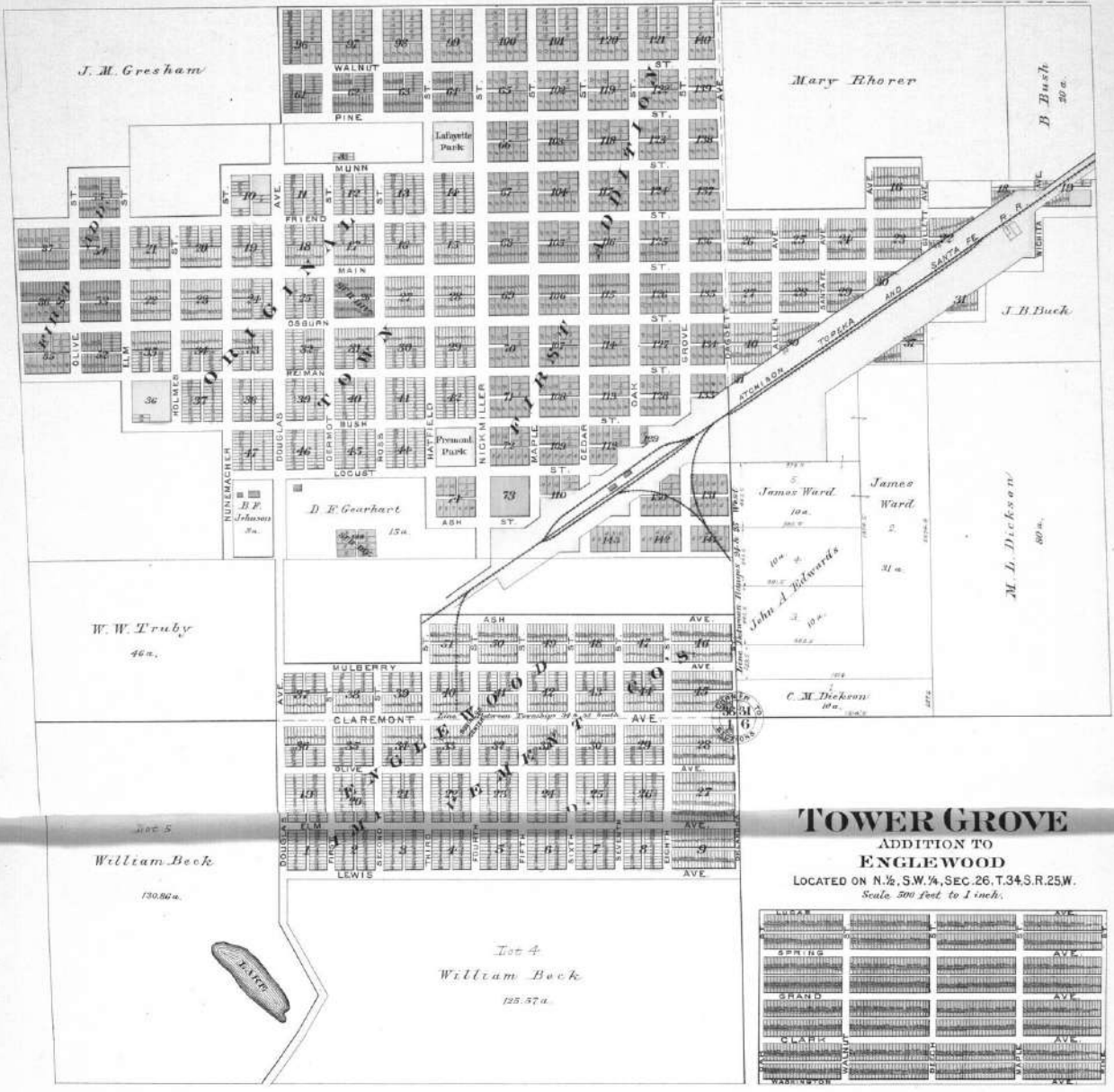
S T A T E O F O K L A H O M A

ENGLEWOOD

LOCATED IN TWP. 34 & 35 S. RANGES 24 & 25 W. OF 6TH P.M.

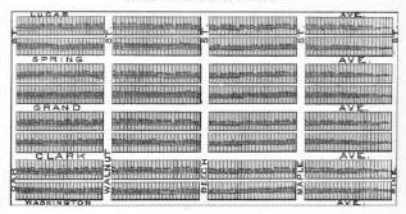
CLARK COUNTY, KANSAS

Scale 500 feet to 1 inch.



TOWER GROVE

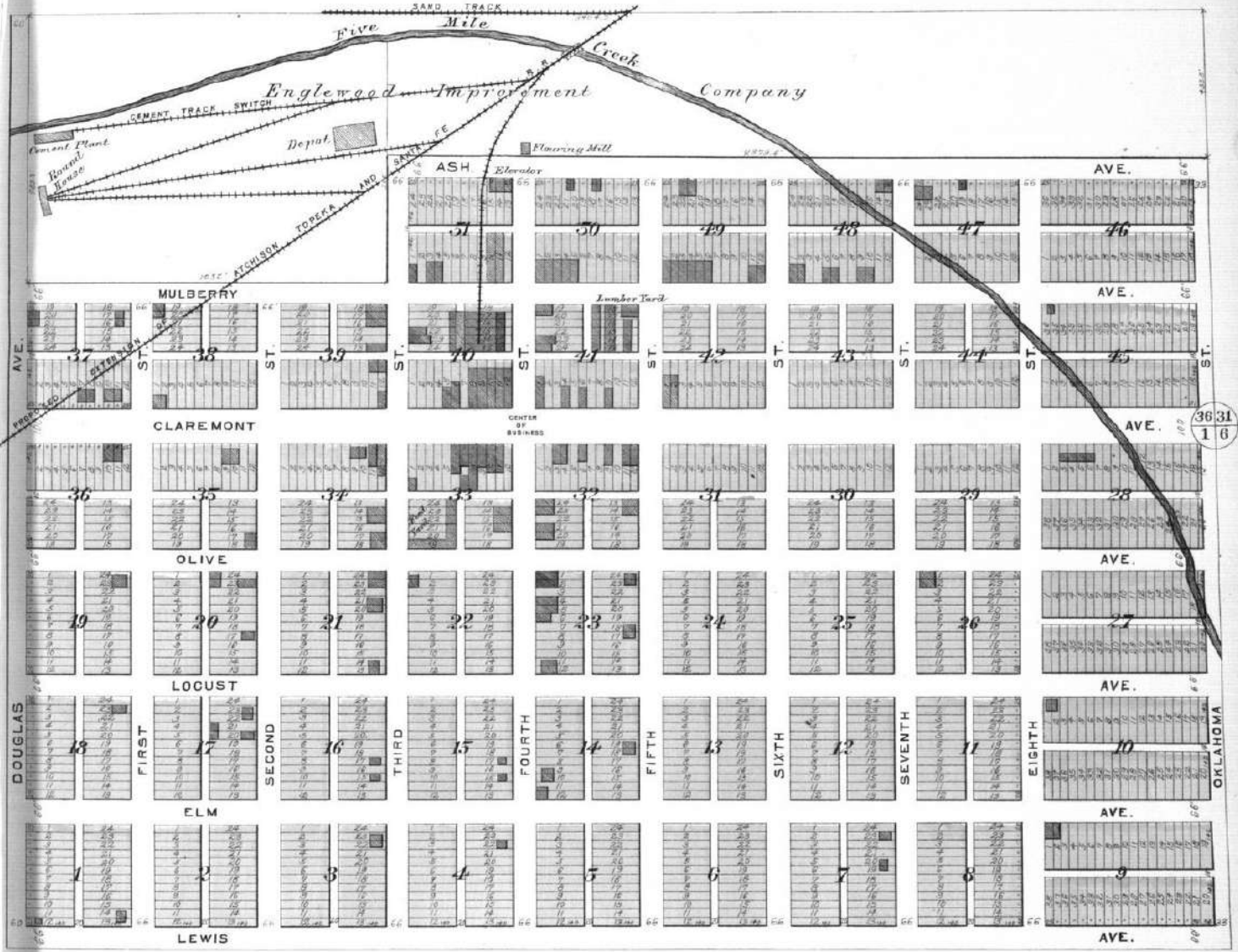
ADDITION TO
ENGLEWOOD
LOCATED ON N. 1/2, S.W. 1/4, SEC. 26, T.34 S. R. 25 W.
Scale 500 feet to 1 inch.



ENGLEWOOD IMPROVEMENT CO'S.

ADDITION TO
ENGLEWOOD, KANSAS.
Scale 250 feet to 1 inch.

Directors
C. E. Doyle..... PRES.
J. A. Edwards..... VICE PRES.
J. W. Berryman..... TREAS.
W. W. Truby..... SECRETARY
W. S. Berryman..... SALESMAN



GOOD RESIDENCE LOTS \$20⁰⁰ TO \$50⁰⁰ BUSINESS LOTS \$50⁰⁰ AND UP

GOOD TERMS AND EASY PAYMENTS

W. W. TRUBY, SECRETARY

MINNEOLA

LOCATED IN TWP. 30, S. RANGE 25, W.

Scale 300 feet to one inch.



J. W. Faris

Luman Snyder

J. W. Jones

Lowrey & Gum
56 a.

Mary Moncrief

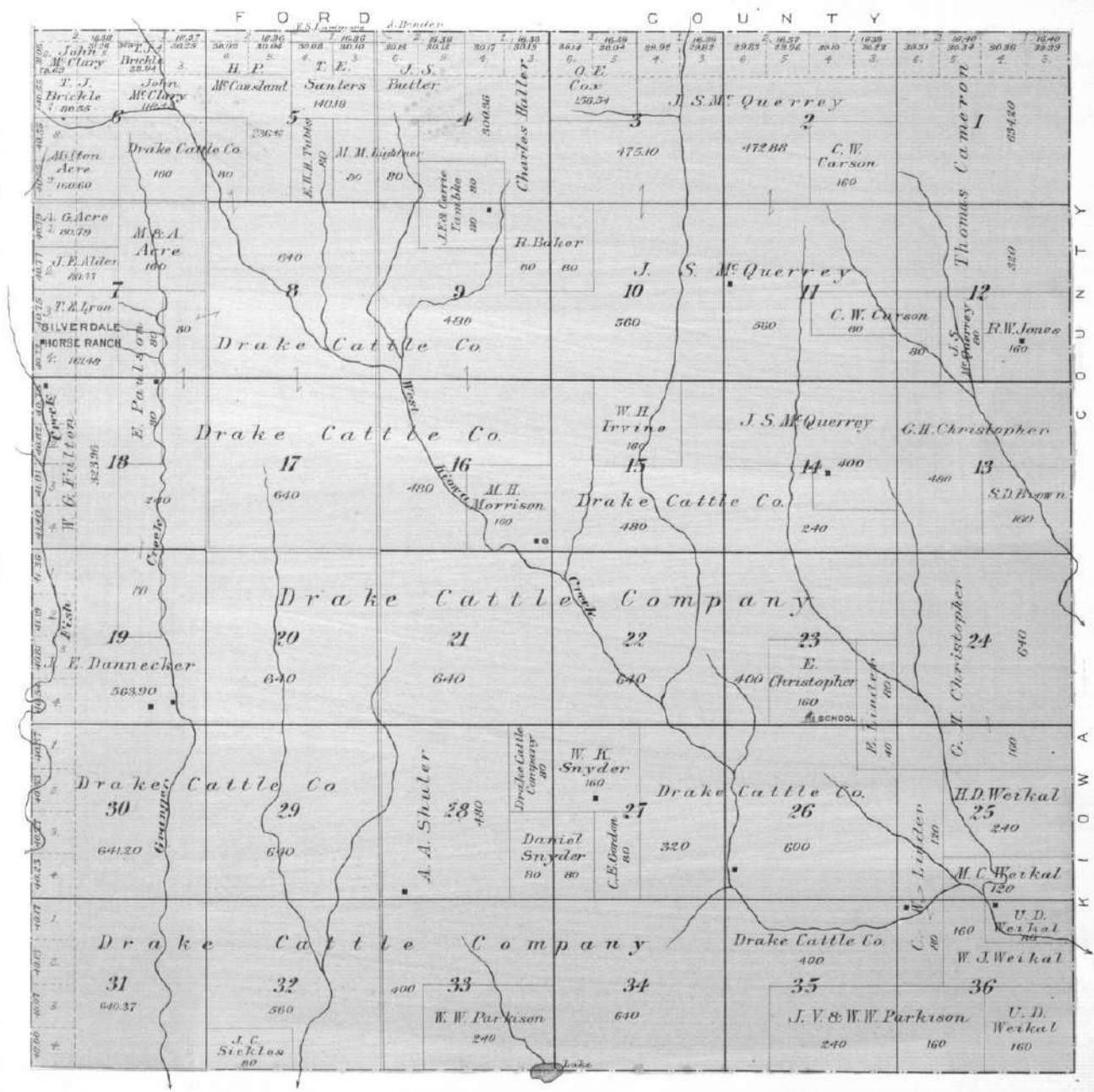
E. Robinson

C. C. Tawzer

TOWNSHIP 30 SOUTH RANGE 21 WEST

Scale 2 Inches to the Mile.

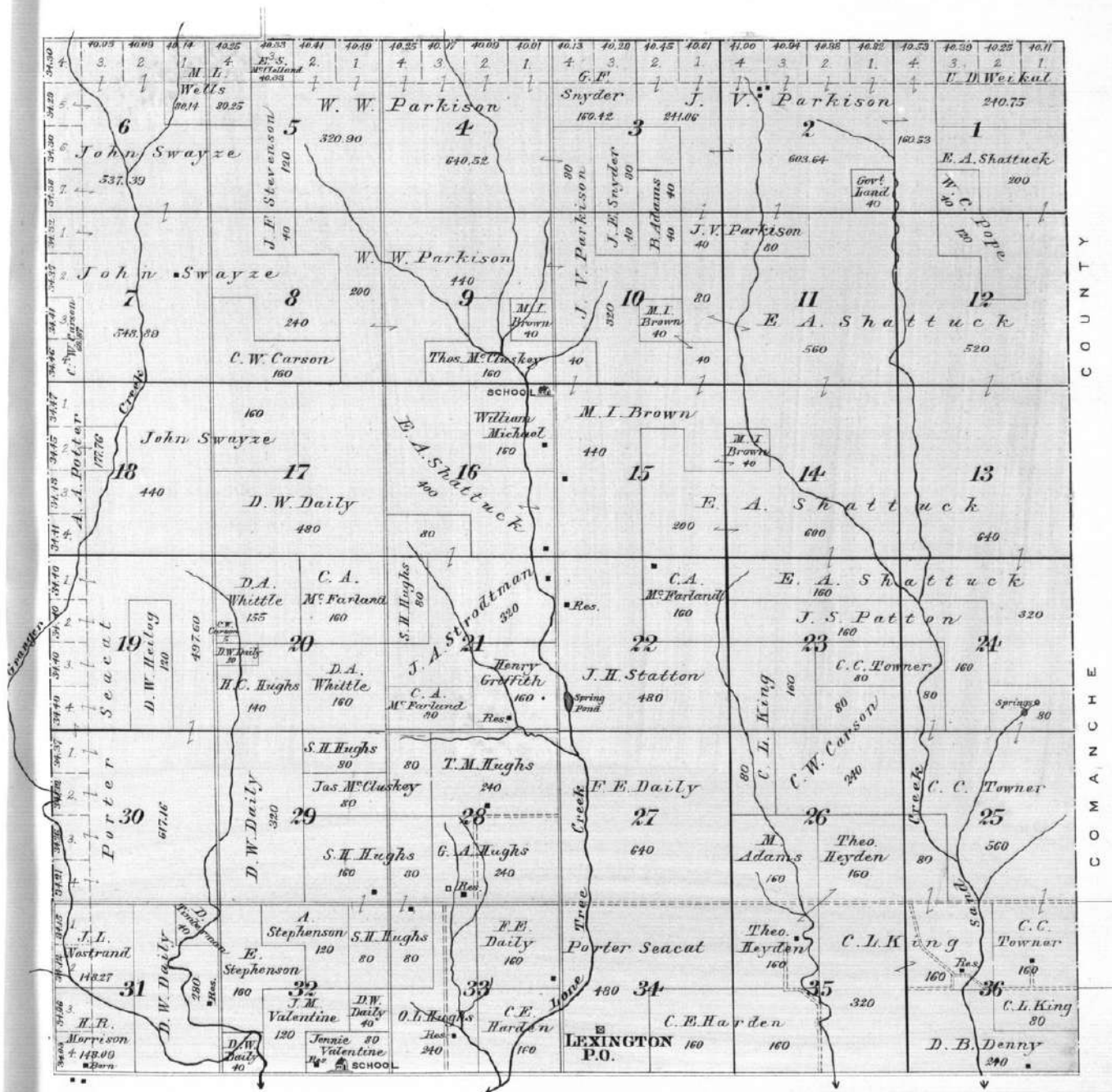
of the 6th Principal Meridian.



TOWNSHIP 31 SOUTH RANGE 21 WEST

Scale 2 Inches to the Mile.

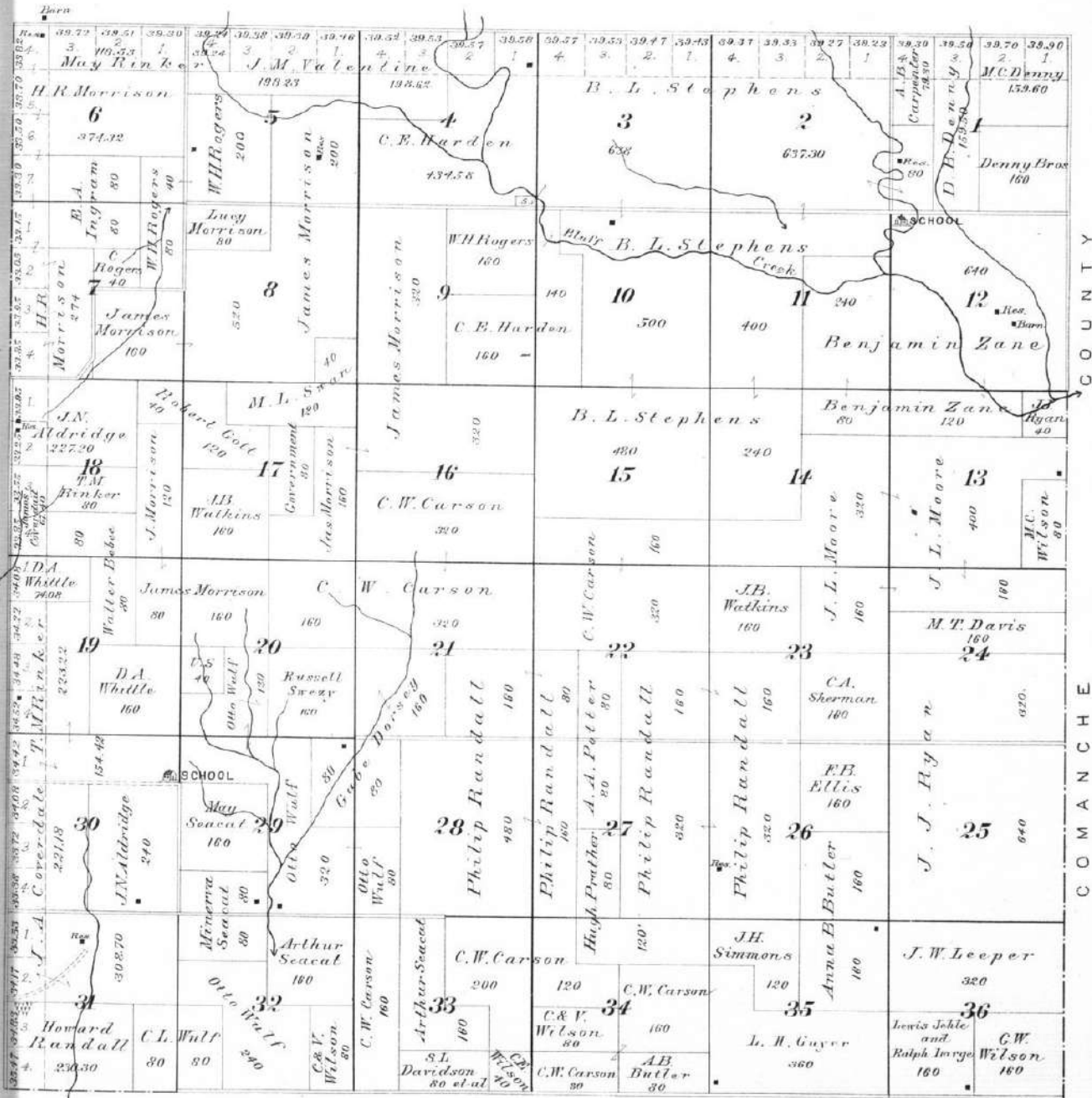
of the 6th Principal Meridian.



TOWNSHIP 32 SOUTH RANGE 21 WEST.

Scale 2 Inches to the Mile

of the 6th Principal Meridian.



TOWNSHIP 33 SOUTH RANGE 21 WEST.

Scale 2 Inches to the Mile

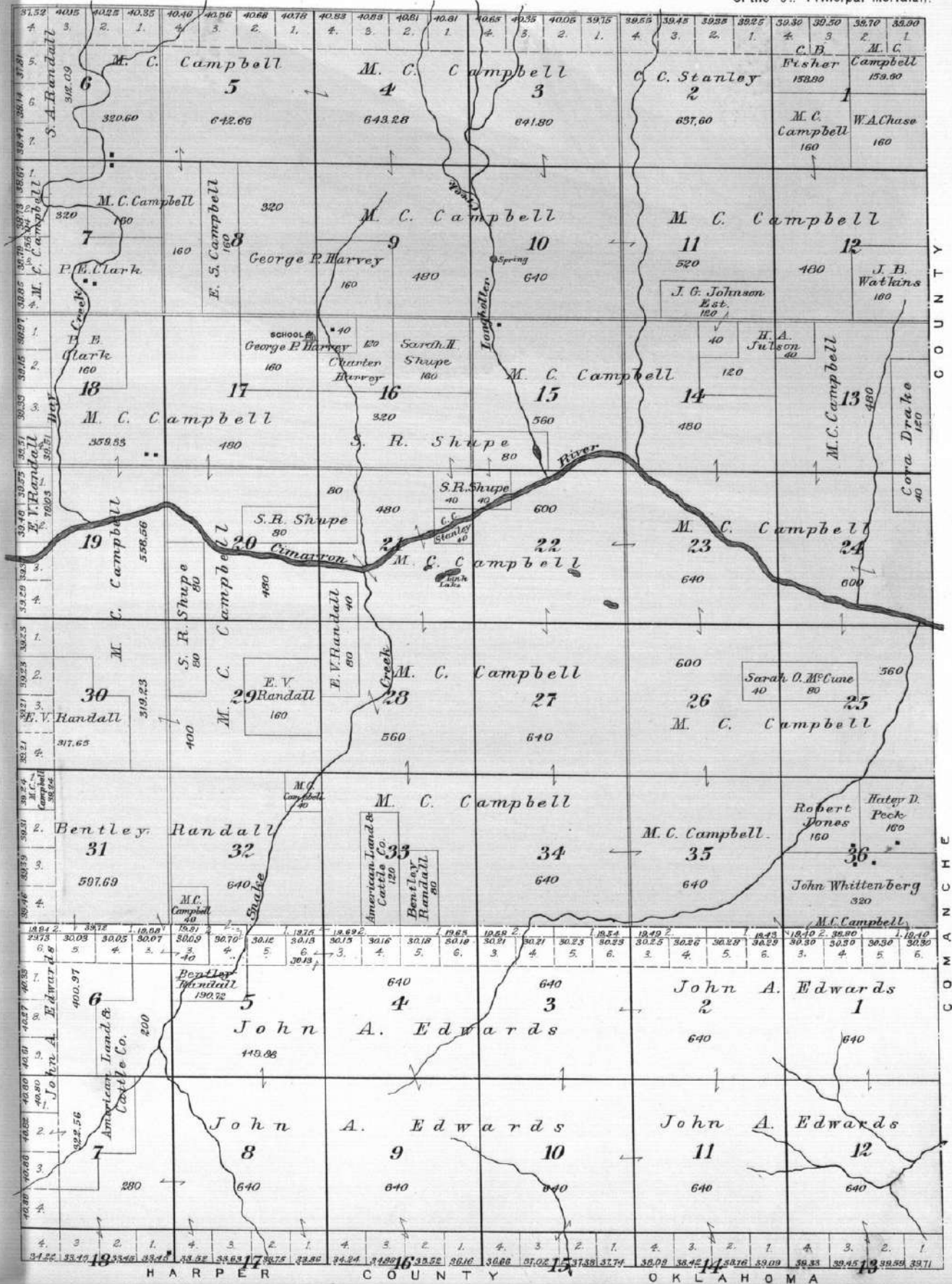
of the 6th Principal Meridian.



TOWNSHIPS 34 & 35 SOUTH RANGE 21 WEST.

Scale 2 Inches to the Mile.

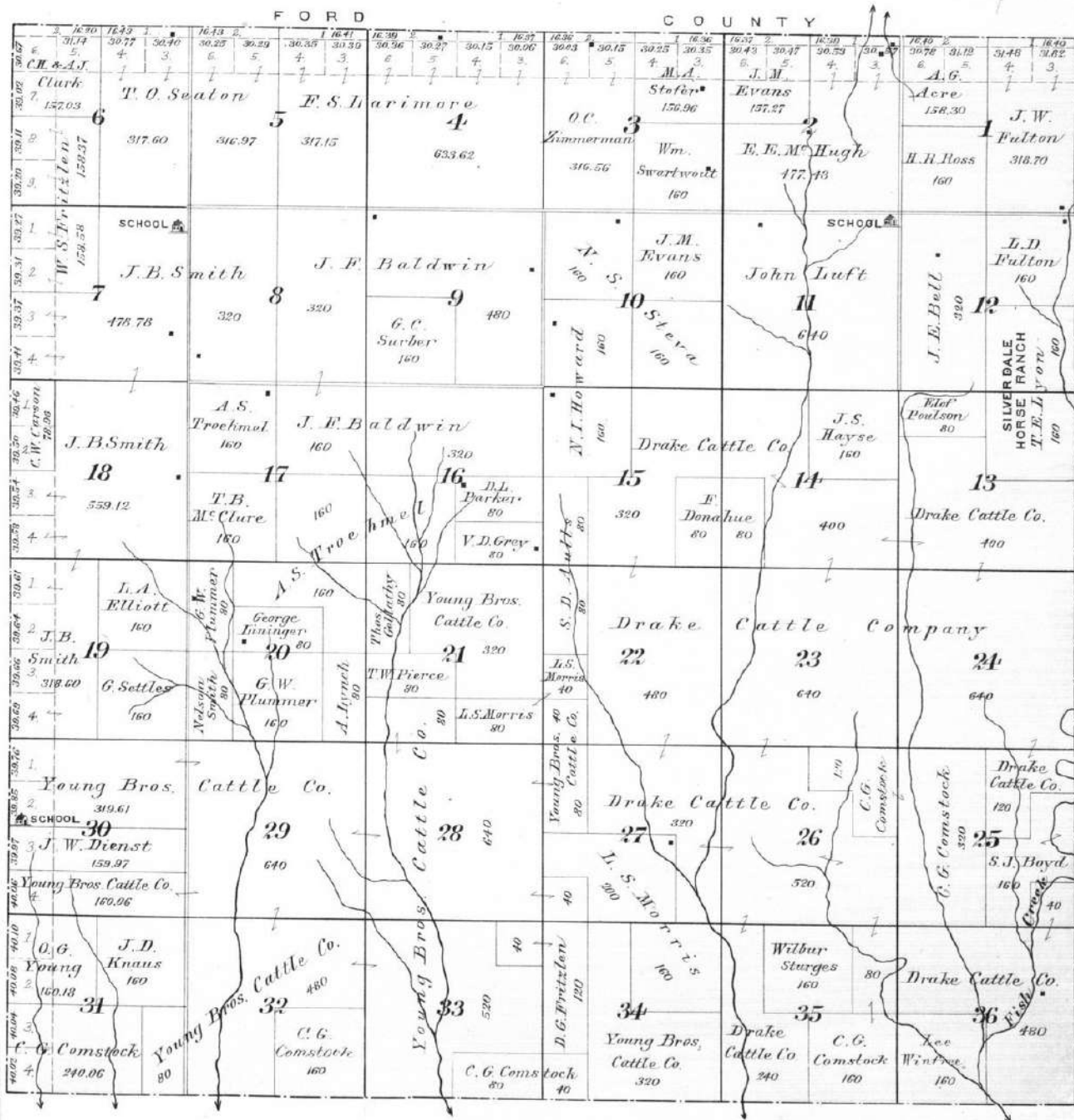
of the 6th Principal Meridian.



TOWNSHIP 30 SOUTH RANGE 22 WEST.

Scale 2 Inches to the Mile

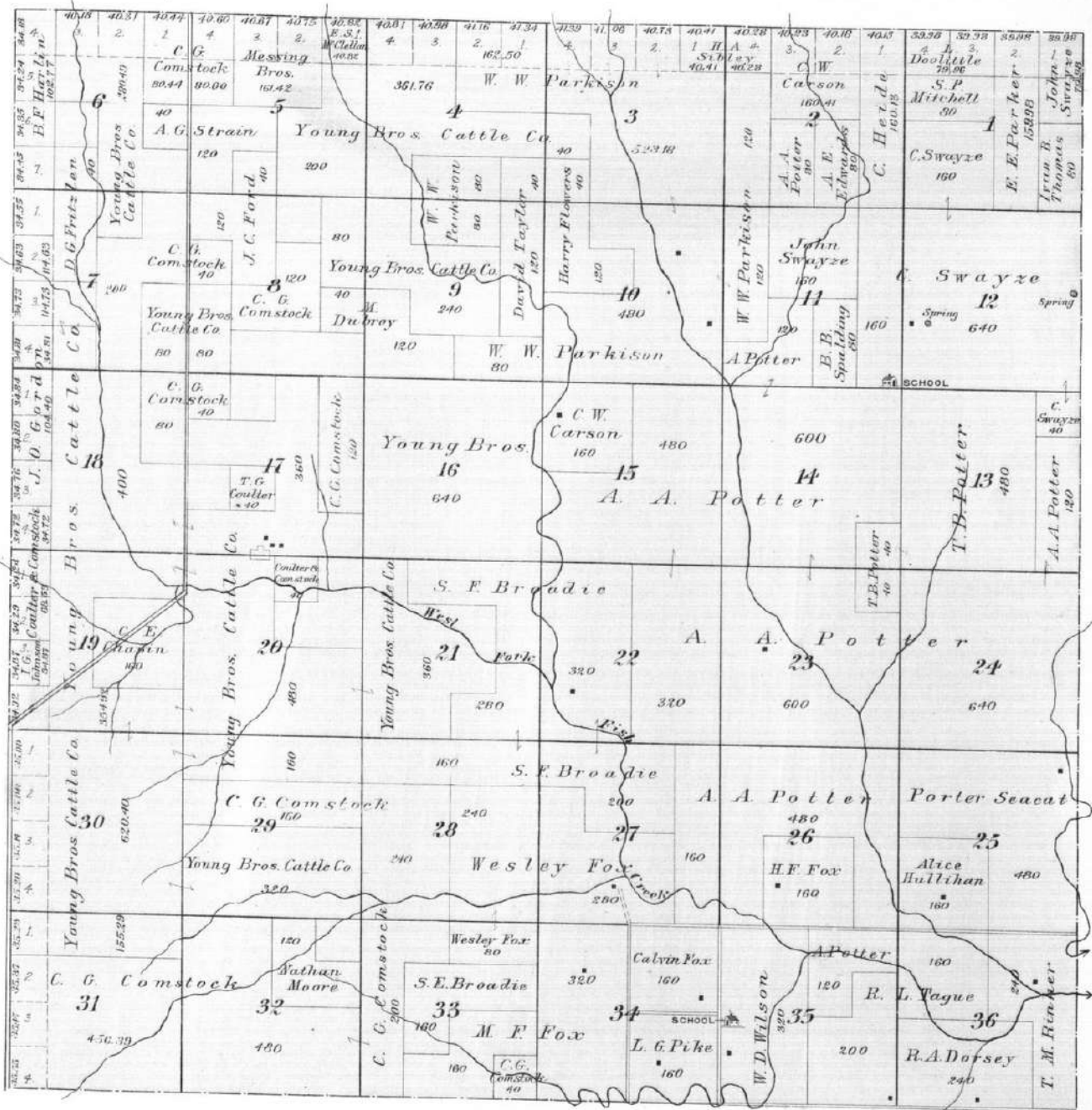
of the 6th Principal Meridian.



TOWNSHIP 31 SOUTH RANGE 22 WEST

Scale 2 Inches to the Mile.

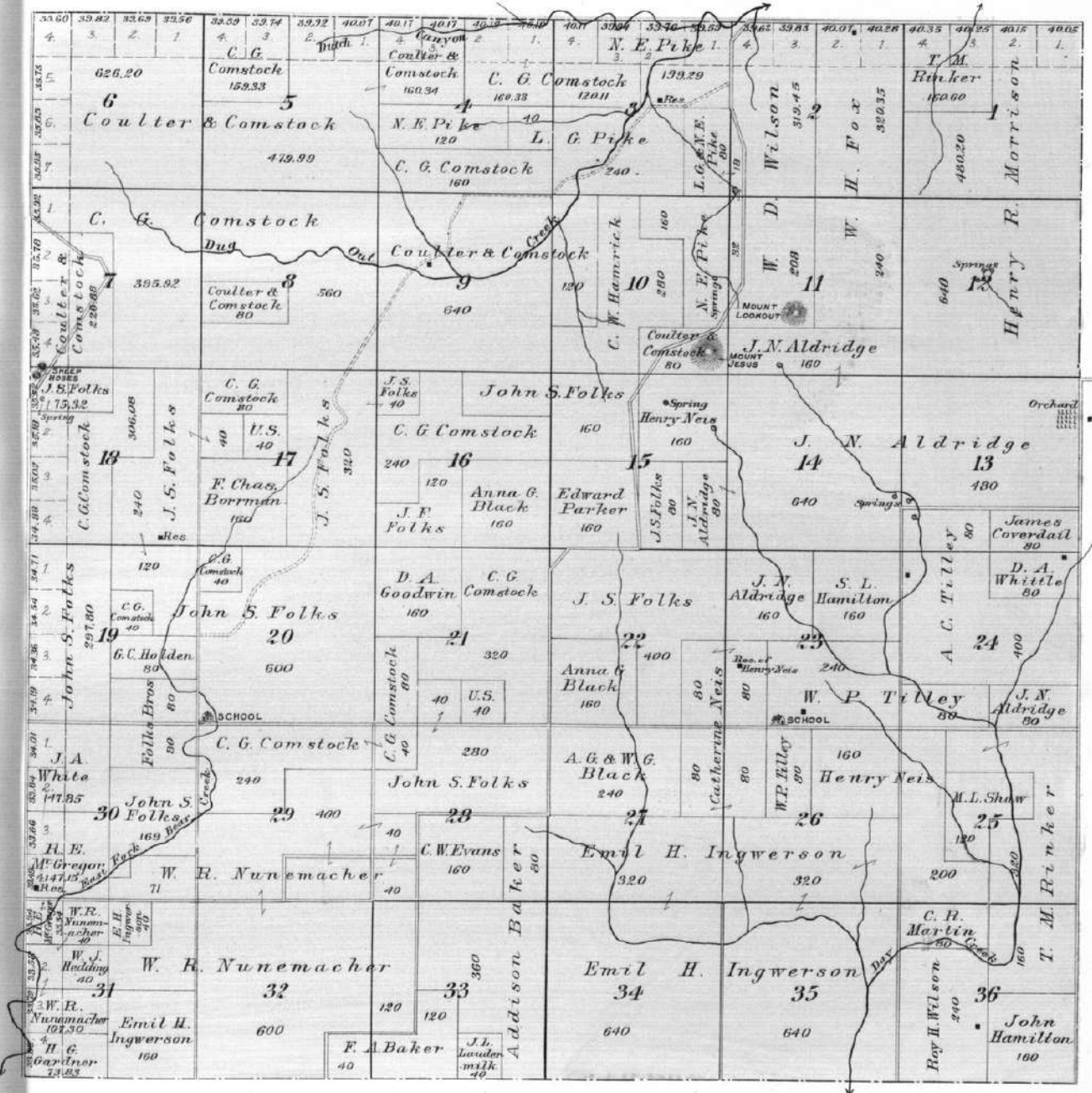
of the 6th Principal Meridian



TOWNSHIP 32 SOUTH RANGE 22 WEST.

Scale 2 Inches to the Mile.

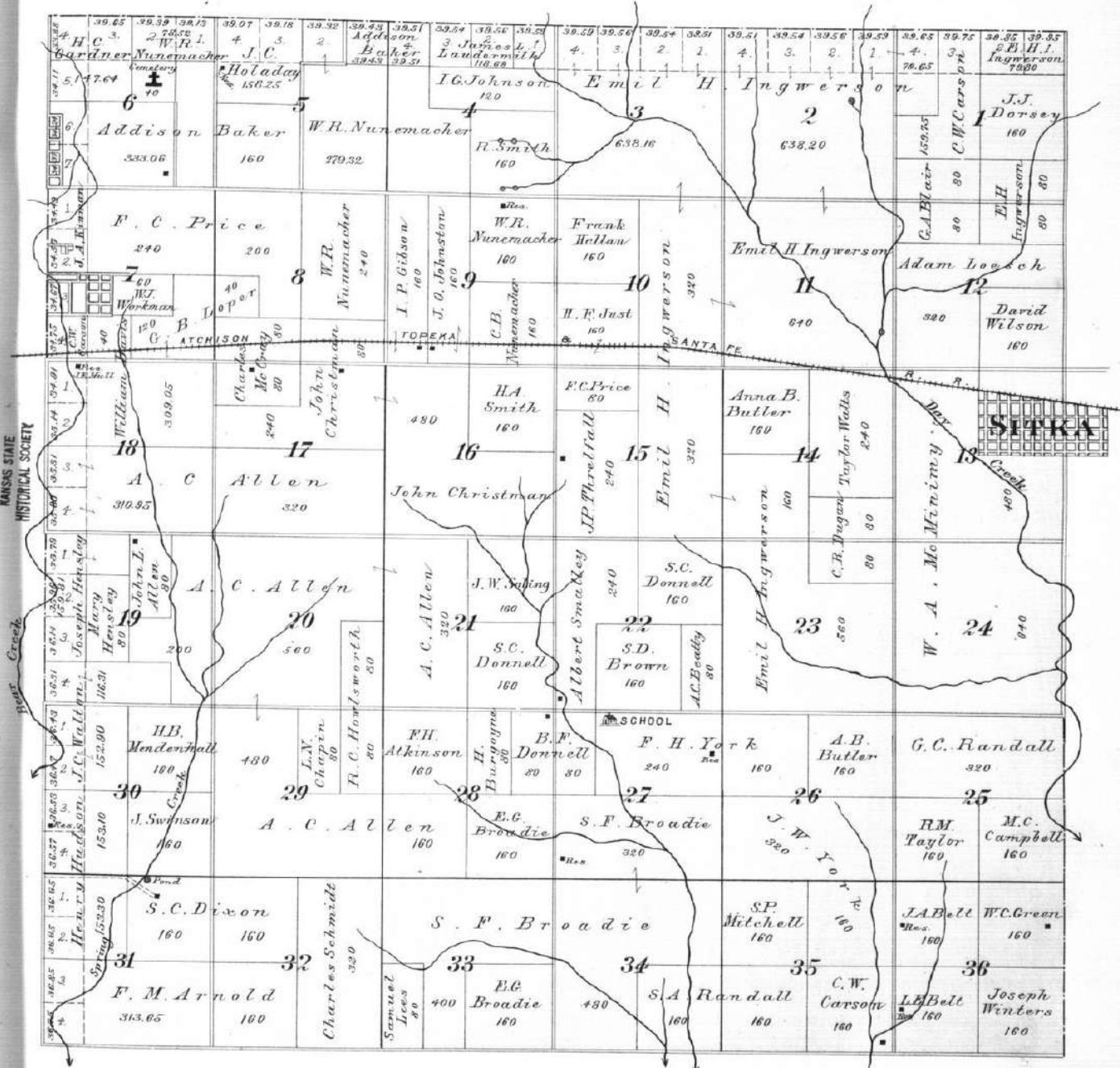
of the 6th Principal Meridian.



TOWNSHIP 33 SOUTH RANGE 22 WEST.

Scale 2 Inches to the Mile.

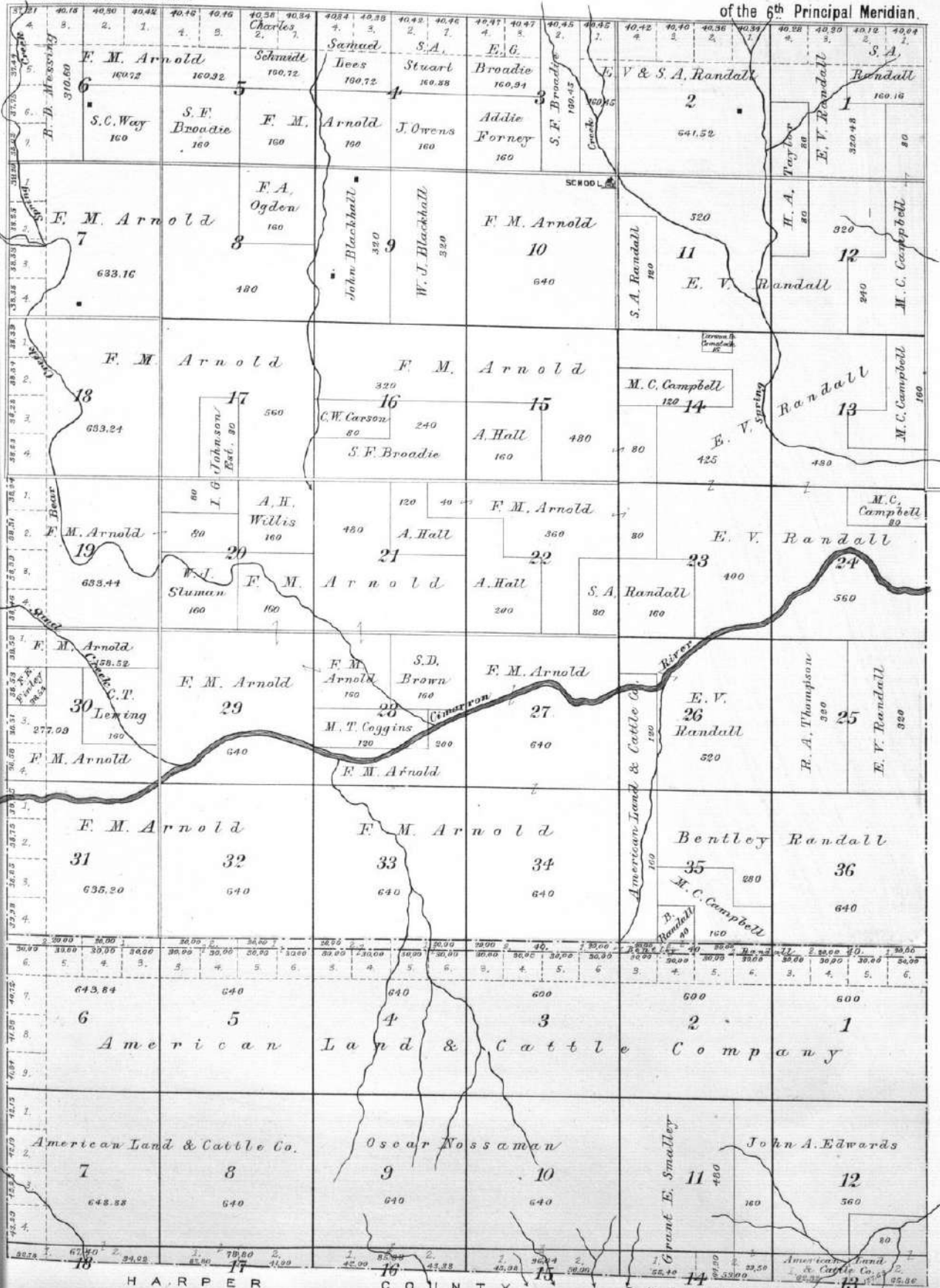
of the 6th Principal Meridian.



TOWNSHIPS 34 & 35 SOUTH RANGE 22 WEST.

Scale 2 Inches to the Mile.

of the 6th Principal Meridian.

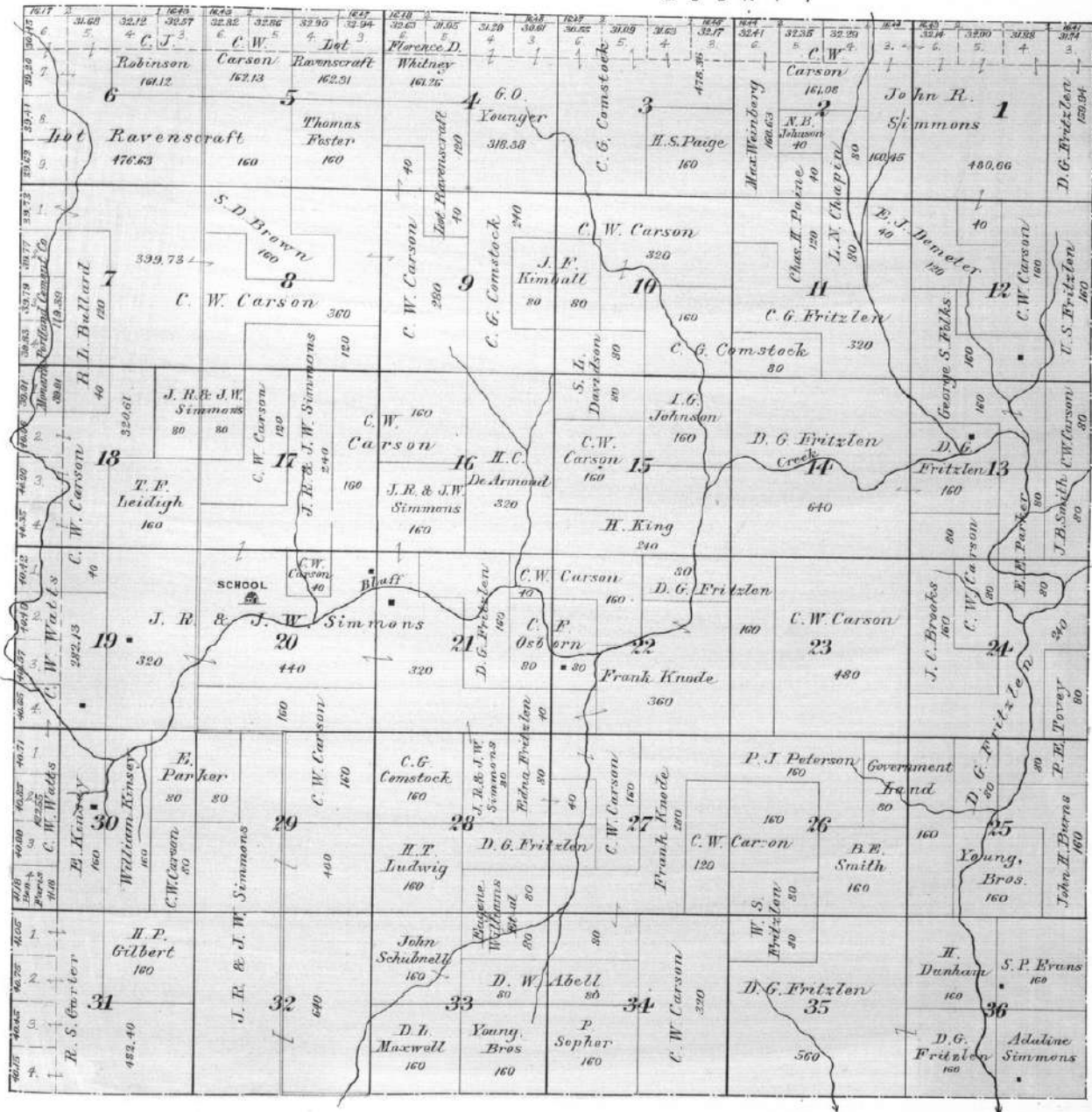


TOWNSHIP 30 SOUTH RANGE 23 WEST.

Scale 2 Inches to the Mile.

of the 6th Principal Meridian.

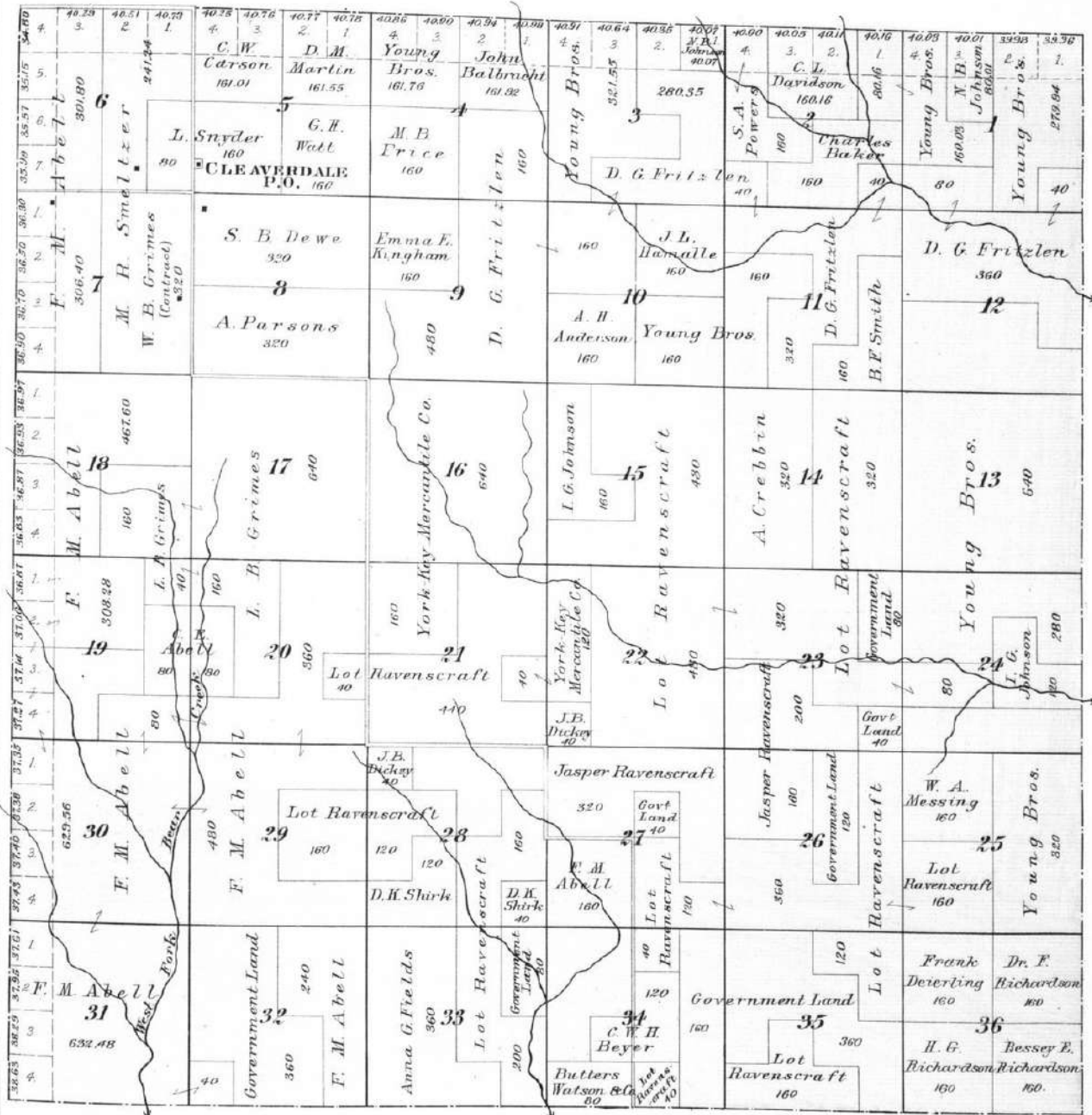
F O R D C O U N T Y



TOWNSHIP 31 SOUTH RANGE 23 WEST.

Scale 2 Inches to the Mile.

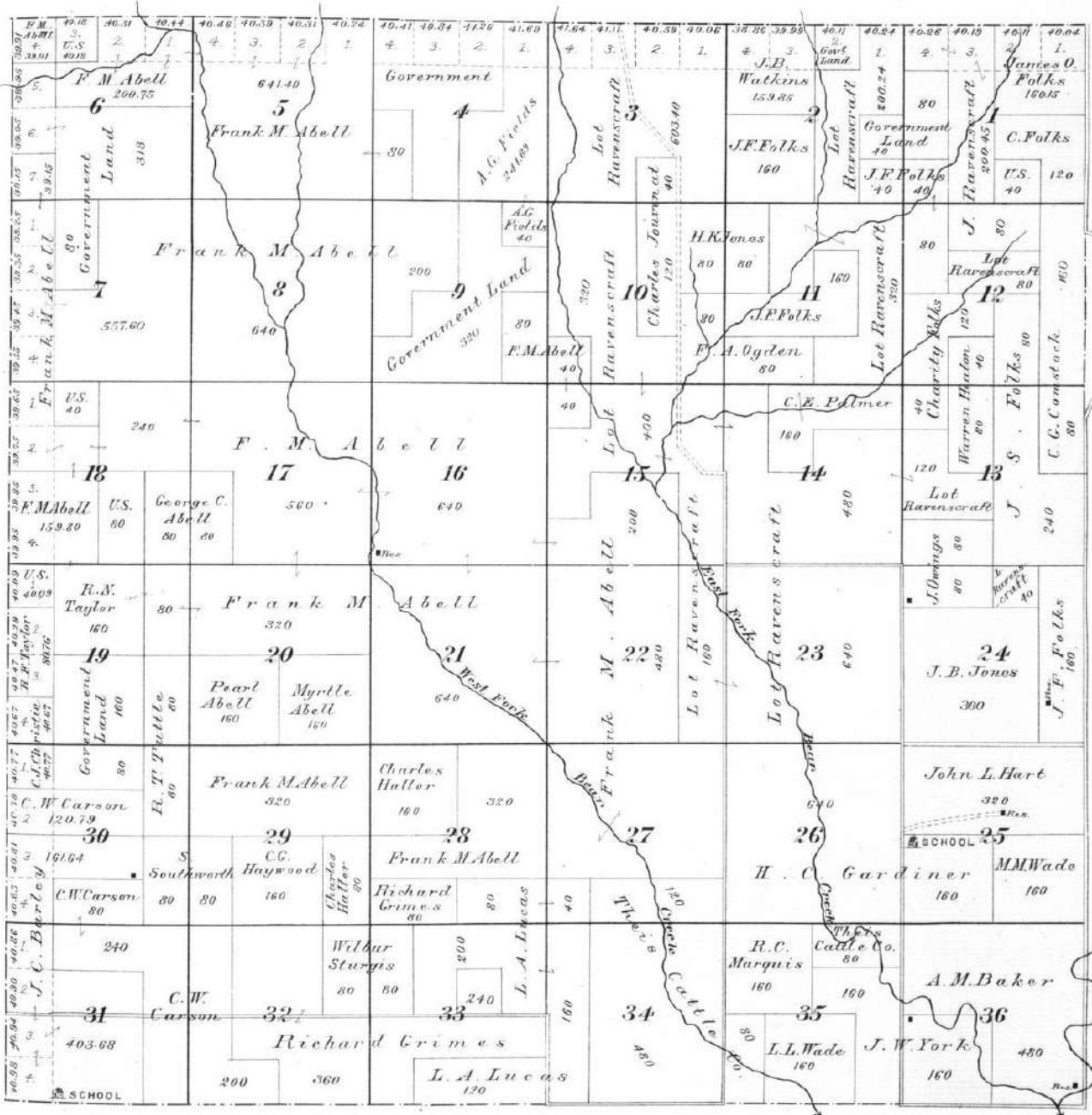
of the 6th Principal Meridian.



TOWNSHIP 32 SOUTH RANGE 23 WEST.

Scale 2 Inches to the Mile.

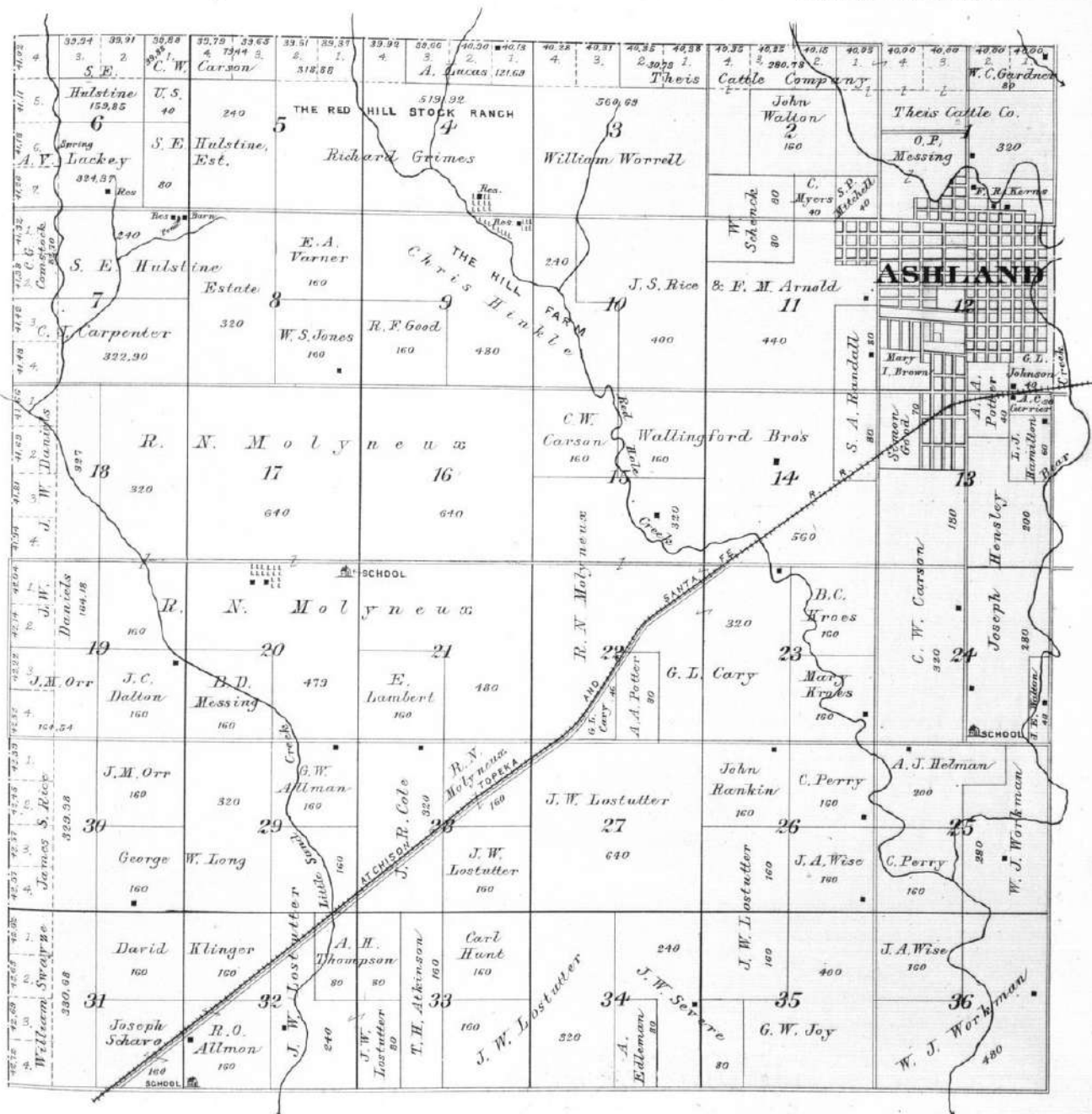
of the 6th Principal Meridian.



TOWNSHIP 33 SOUTH RANGE 23 WEST

Scale 2 Inches to the Mile.

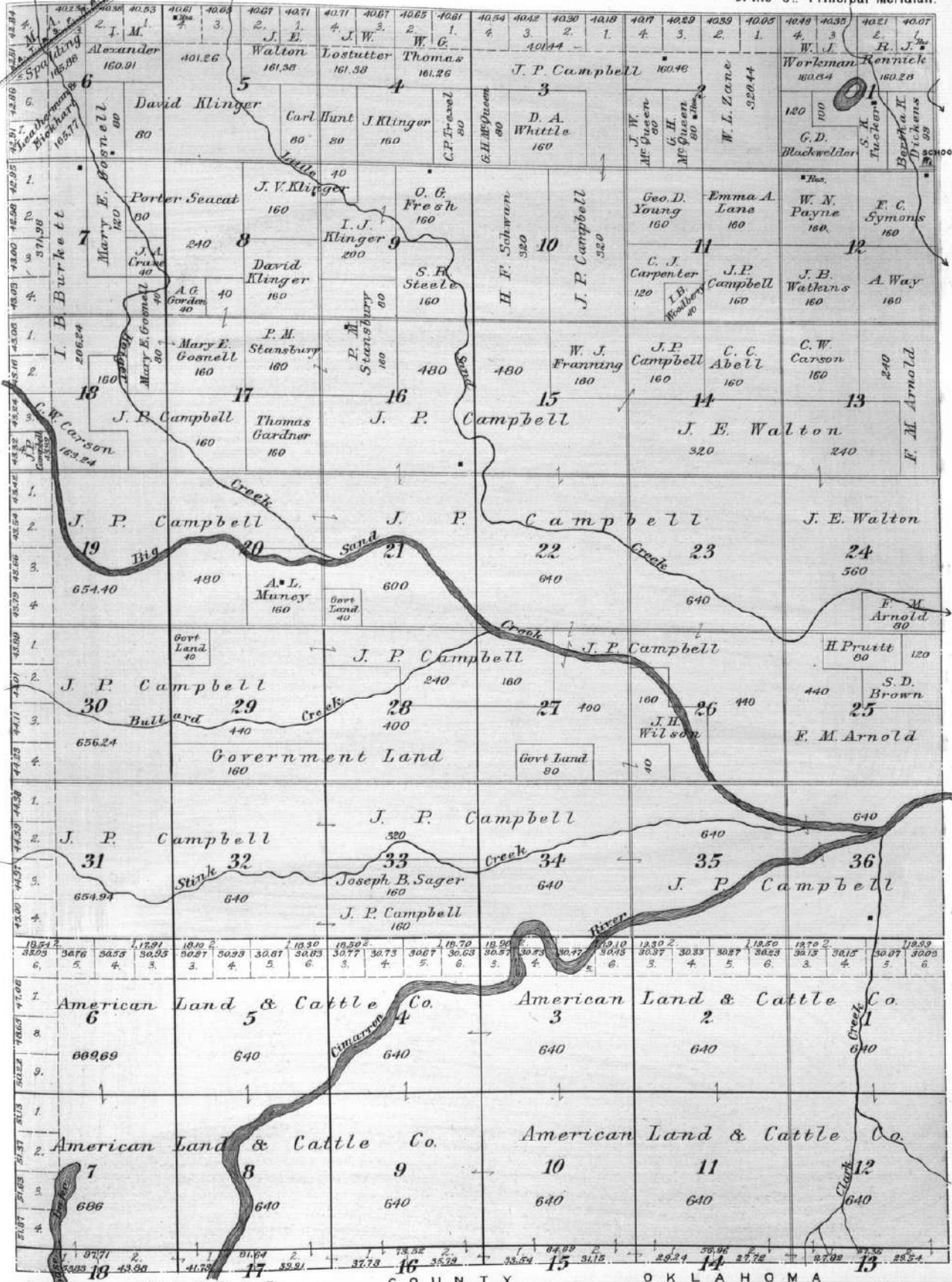
of the 6th Principal Meridian.



TOWNSHIPS 34 & 35 SOUTH RANGE 23 WEST.

Scale 2 Inches to the Mile.

of the 6th Principal Meridian.

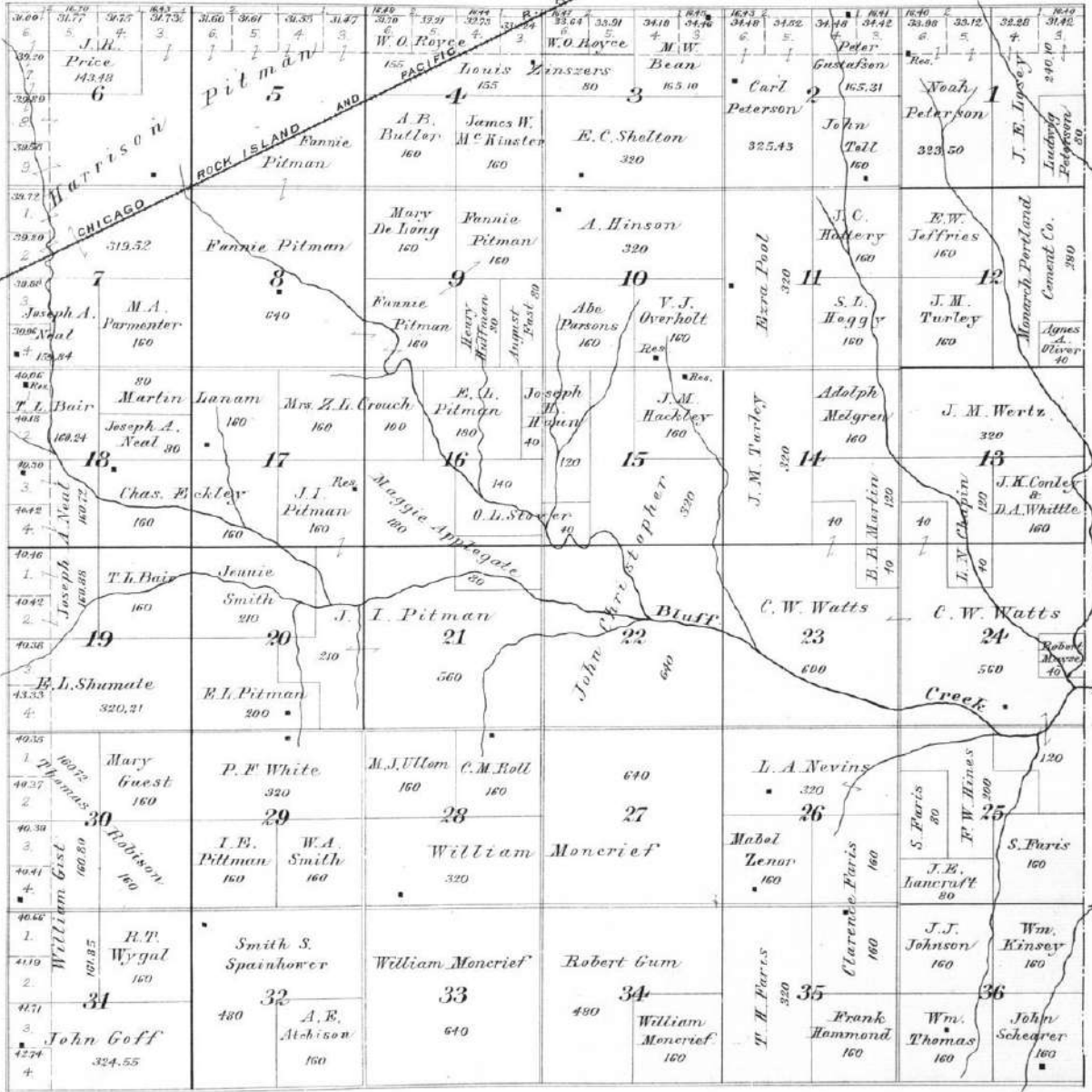


TOWNSHIP 30 SOUTH RANGE 24 WEST

Scale 2 Inches to the Mile

of the 6th Principal Meridian.

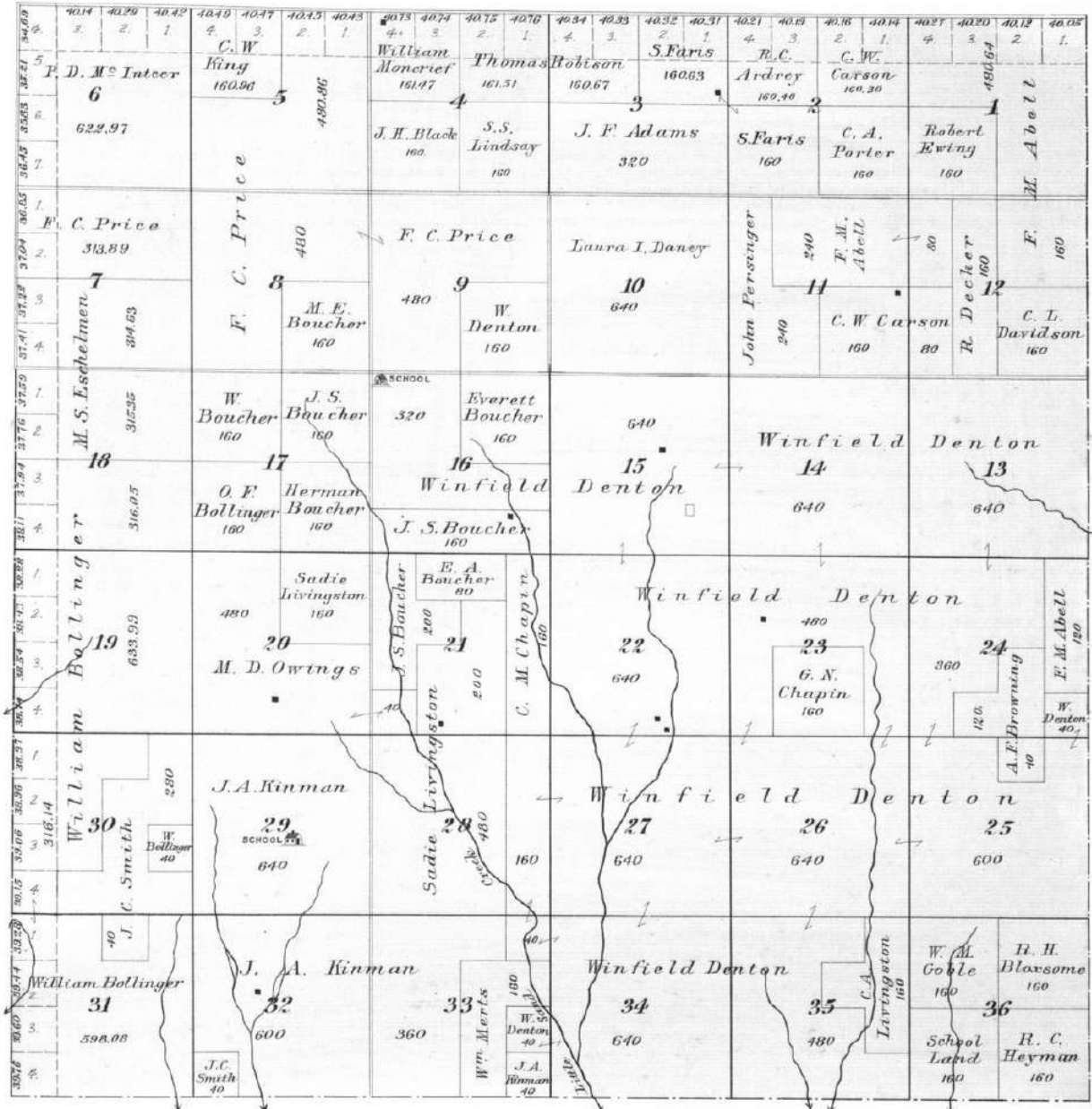
F O R D C O U N T Y



TOWNSHIP 31 SOUTH RANGE 24 WEST.

Scale 2 Inches to the Mile.

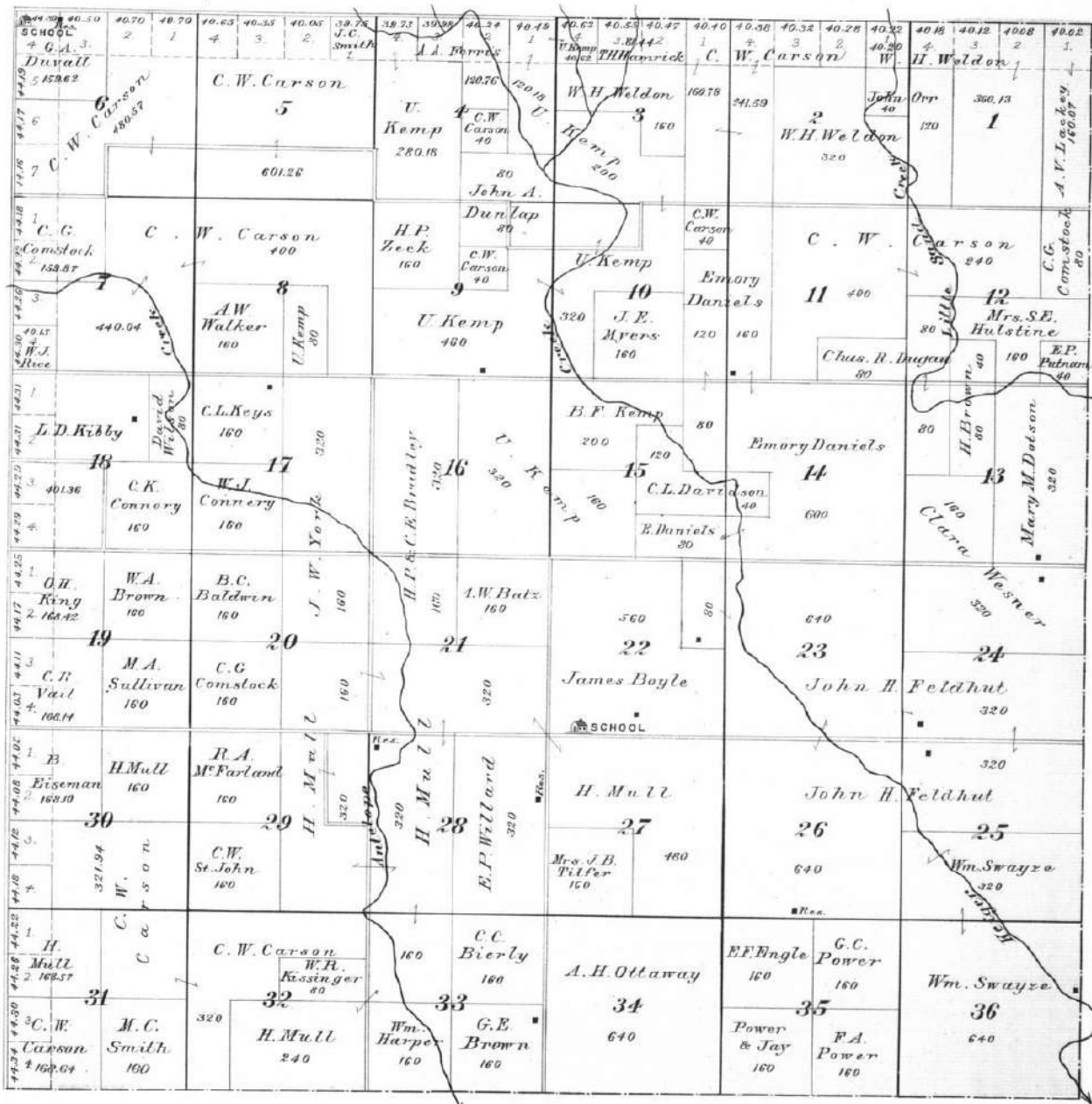
of the 6th Principal Meridian.



TOWNSHIP 33 SOUTH RANGE 24 WEST.

Scale 2 Inches to the Mile.

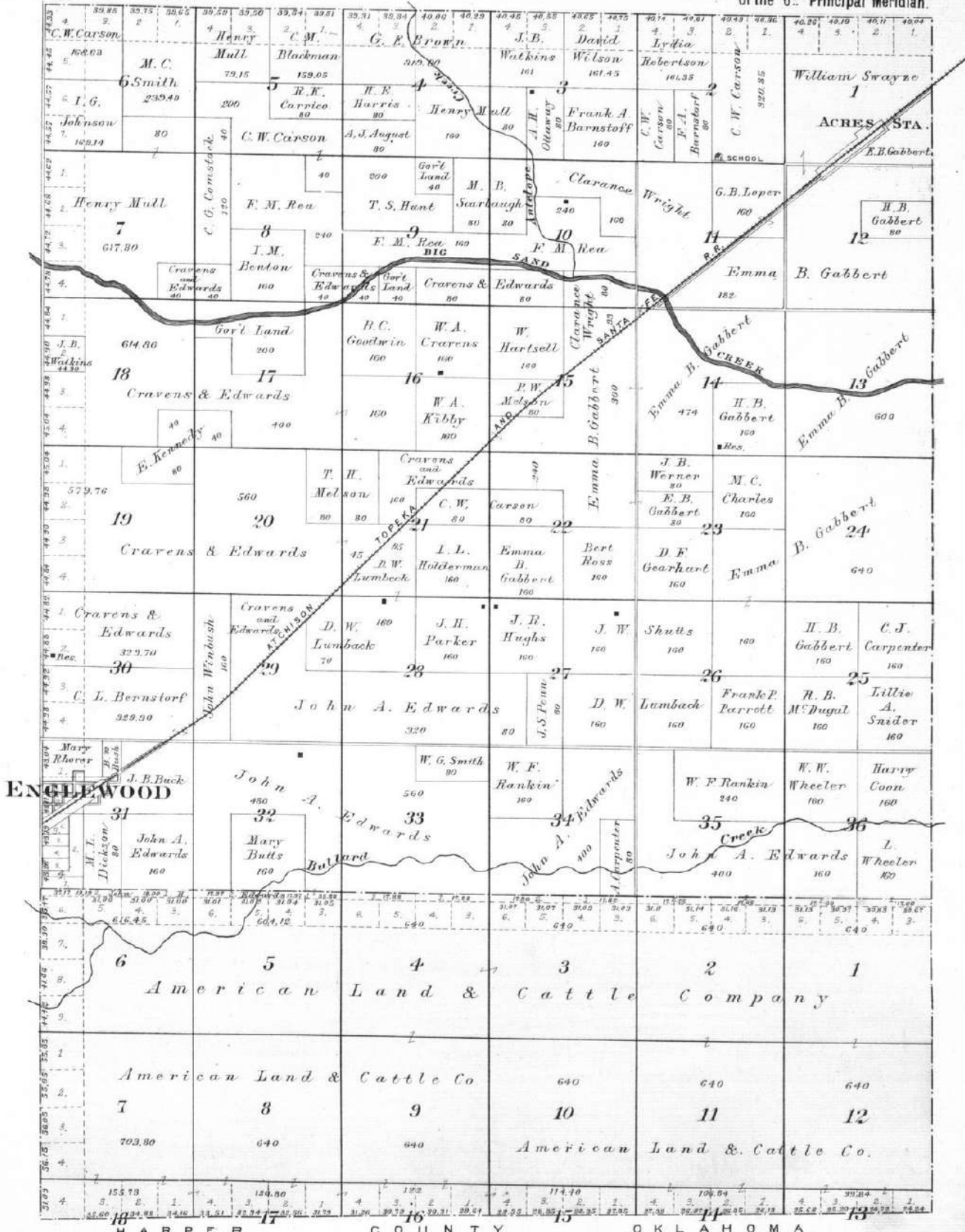
of the 6th Principal Meridian.



TOWNSHIPS 34 & 35 SOUTH RANGE 24 WEST.

Scale 2 Inches to the Mile.

of the 6th Principal Meridian.



TOWNSHIP 30 SOUTH RANGE 25 WEST

Scale 2 Inches to the Mile.

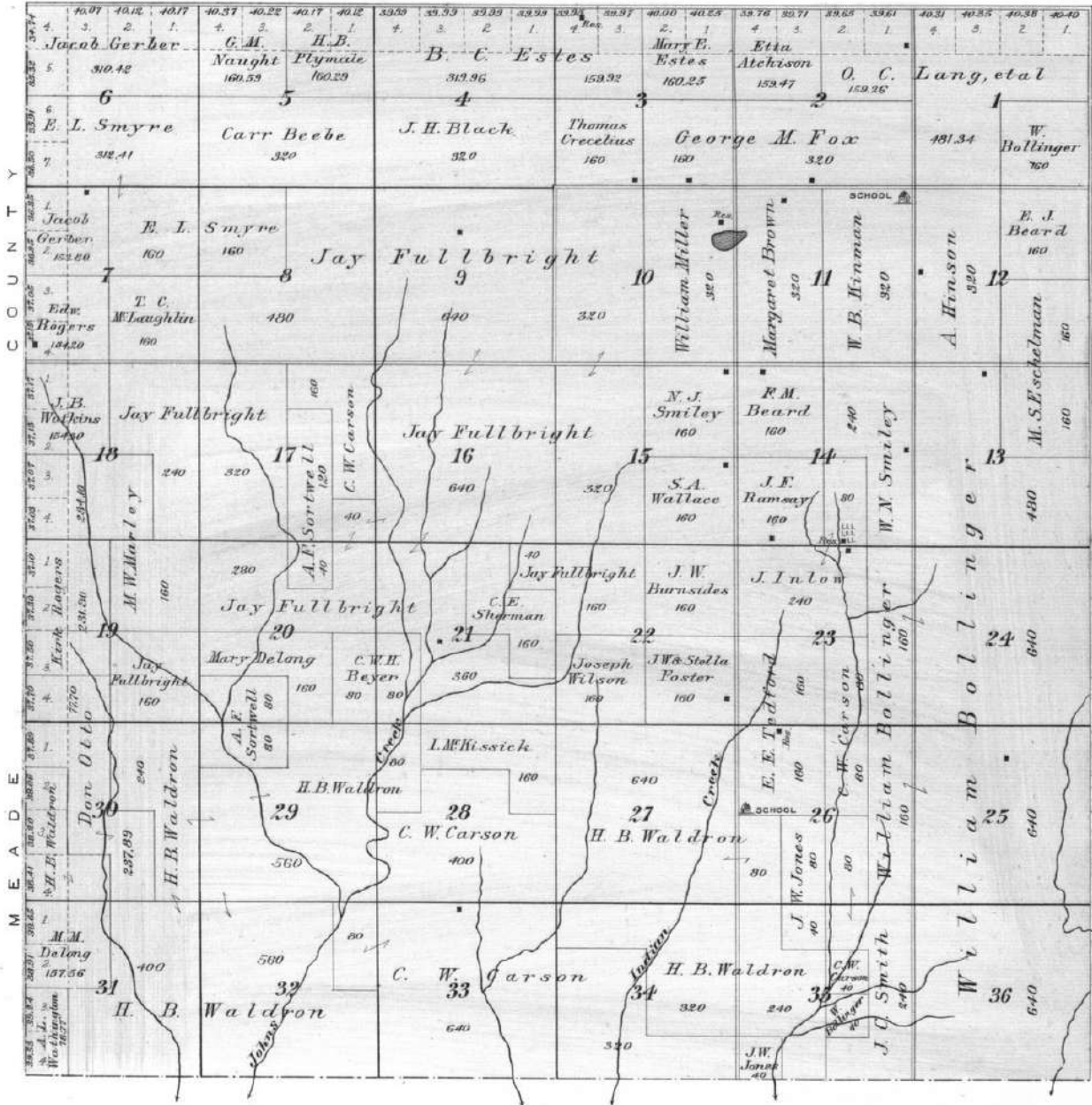
of the 6th Principal Meridian.

Y C O U N T Y	F O R D												C O U N T Y											
	1	2	3	4	5	6	7	8	9	10	11	12	1	2	3	4	5	6	7	8	9	10	11	12
6	Thayer 162.83	Dowell 162.26	Stoddard 164.12	Schierling 483.08				Martin 164.87	Hall 164.61	C. R. Martin 486.16			Joseph Any 240.55	W. W. Statton 160		Herman Dahms 160								
7	James H. Sparks 320												Albert G. Delgat 240			J. E. McGonigle 80	Thos. Robison 80		W. W. Statton 160		Herman Dahms 160			
8	M. G. Hilley 319.46	James M. Adam 480		H. C. Wiley 480				C. C. De Hart 160			J. E. Pitman 320			PLEASANT HILL FARM W. W. Statton 160		A. E. Statton 320								
9	Edward Williamson 319.66	Rigg 160		C. C. De Hart 160				C. Wiley 320			C. R. Martin 80			J. W. Paris 80		Iruan Stryder 91		E. B. Own 60						
10	Joseph A. Neal 159.66		W. I. Menden 320		James M. Adam 160		W. C. Smith 120		C. A. Crane 160			C. B. Ruggles 160			C. R. Martin 160		MINNEAPOLIS Robert Lawrey Mary Hansel E. Robison 190			E. L. Skumate 320				
11	C. F. Wagner 319.75		C. F. Wagner 315		A. J. Pratt 160		B. C. Estes 160		C. C. Tawzer 160			C. N. Estes 160			J. D. Brownell 640									
12	A. Hoffman 160		A. A. Lingenfeller 160		Louis Zinszer 155				L. F. Simmons 160		C. N. Estes 160			J. D. Brownell 640										
13	Henry 160.07		Louis Zinszer 160		Lena Schul 160		C. H. Kurt 160		L. F. Simmons 160			B. C. Estes 160			Tom Robison 160									
14	C. W. Carson 161.07		A. Hoffman 320				William Schul 320		Norman Jacobs 320			Charles Eckley 300												
15	T. E. Canner 160.81		T. E. Canner 160		Frank Hoffman 160		Carr Beebee 160		M. M. Smith 160			C. R. Martin 640			Cometary R. J. Beard 40		O. Hennick 80							
16	S. J. M. Curvingham 160.26		T. E. Canner 160		Frank Hoffman 160		Carr Beebee 160		Mary Moncrief 320			Allen Jones 480			J. C. Crewe 360			John Goff 160						

TOWNSHIP 31 SOUTH RANGE 25 WEST.

Scale 2 Inches to the Mile

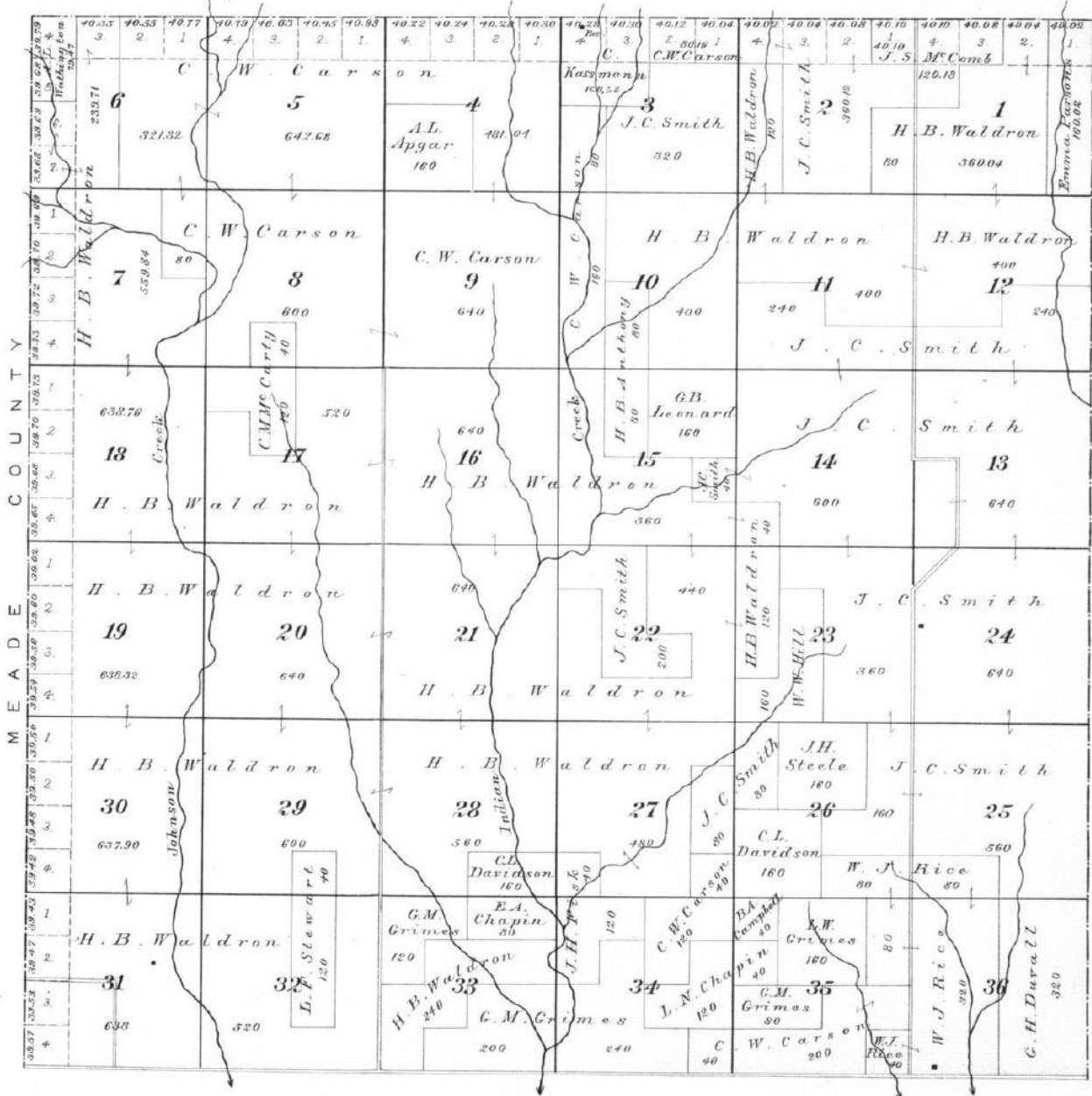
of the 6th Principal Meridian.



TOWNSHIP 32 SOUTH RANGE 25 WEST

Scale 2 Inches to the Mile.

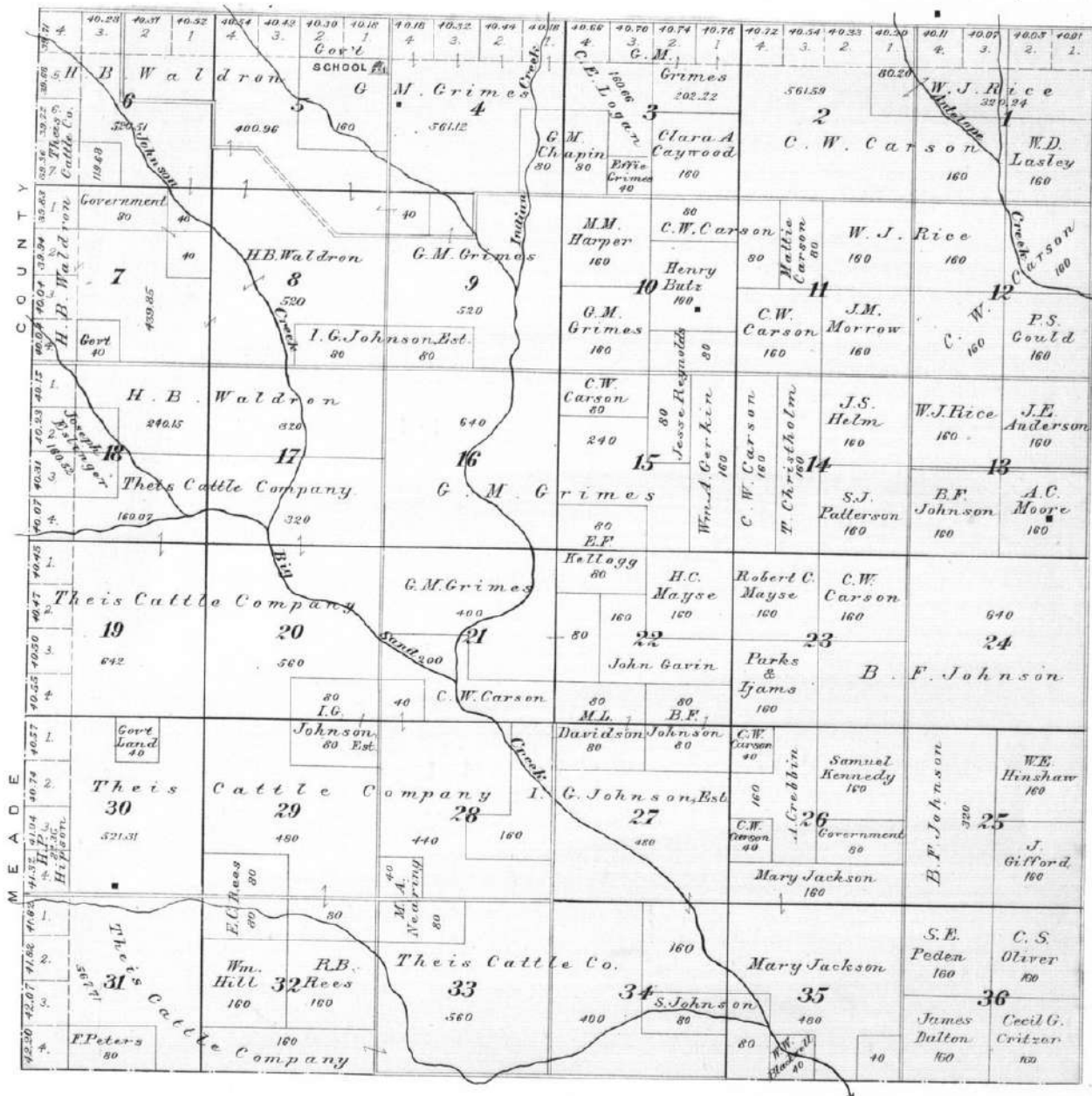
of the 6th Principal Meridian.



TOWNSHIP 33 SOUTH RANGE 25 WEST

Scale 2 Inches to the Mile.

of the 6th Principal Meridian.



TOWNSHIPS 34 & 35 SOUTHRANGE 25 WEST.

Scale 2 Inches to the Mile.

of the 6th Principal Meridian.

