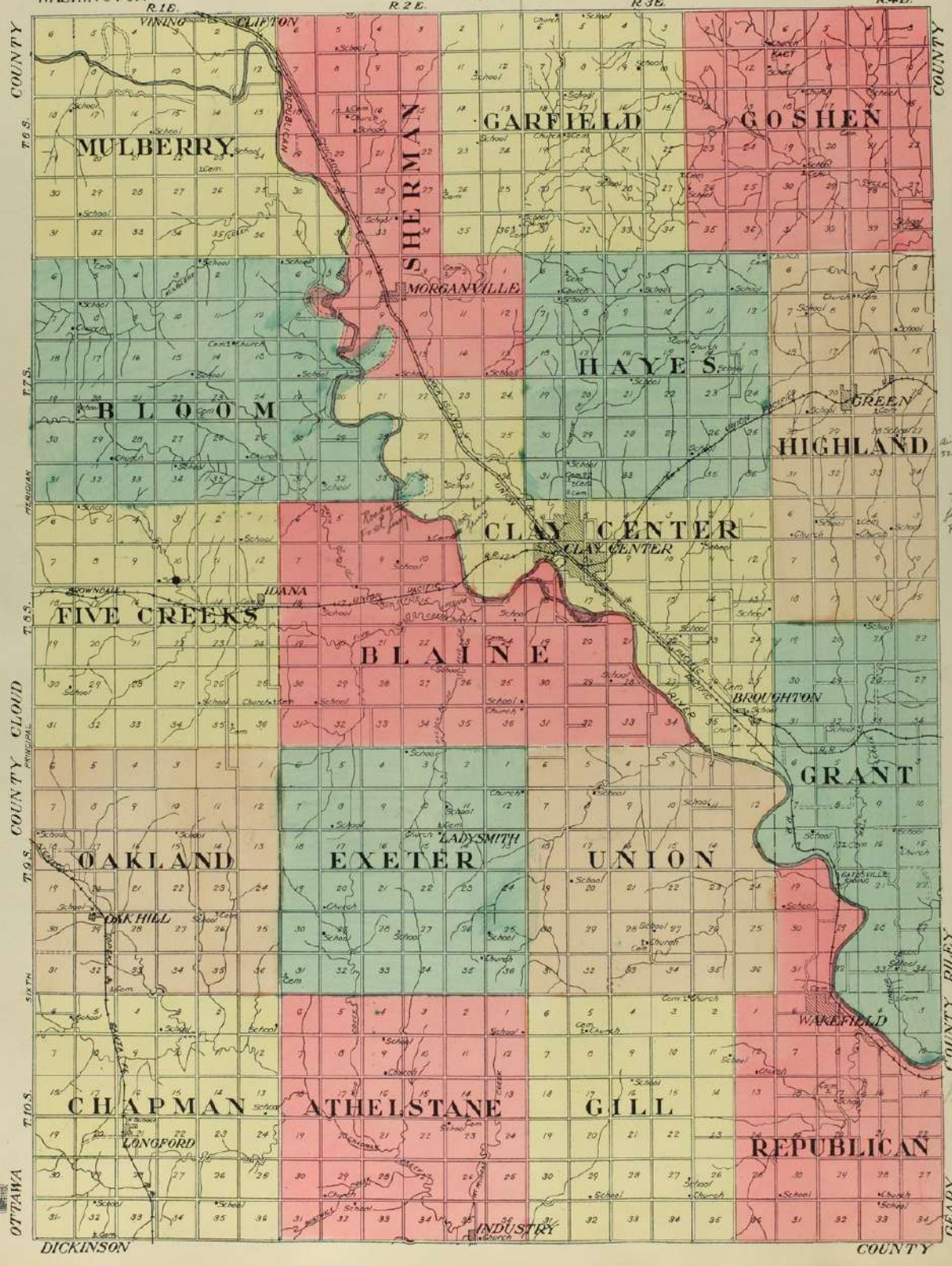


OUTLINE MAP OF CLAY COUNTY

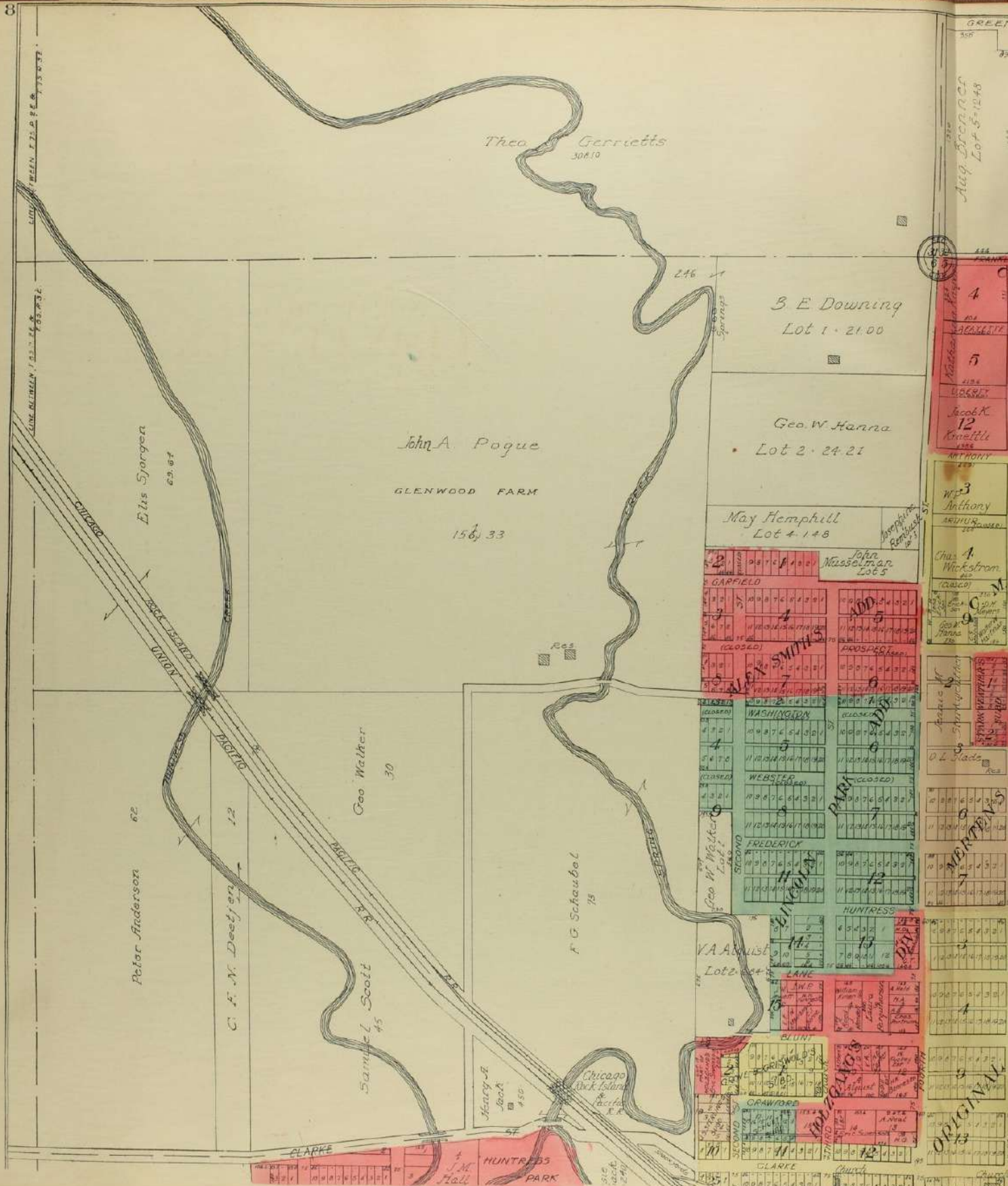
Copyright 1918 by Geo. A. Boyle & Co. Scale 1/8 inch to 1 mile



*Blaine Range
S. 27. 7. 1. 2. 3.*

*Rocky Hill
S. 27. 7. 1. 2. 3.*

*old
Madison*



Aug. Brownlee
Lot 5-1248



4
5
Jacob K.
12
Kraettle
ANTHONY
W. 3
Anthony
Chas. A.
Wickstrom
Geo. Hanna

1
2
3
4
5
6
7
8
9
10
11
12
13
14
15
16
17
18
19
20
21
22
23
24
25
26
27
28
29
30
31
32
33
34
35
36
37
38
39
40
41
42
43
44
45
46
47
48
49
50
51
52
53
54
55
56
57
58
59
60
61
62
63
64
65
66
67
68
69
70
71
72
73
74
75
76
77
78
79
80
81
82
83
84
85
86
87
88
89
90
91
92
93
94
95
96
97
98
99
100

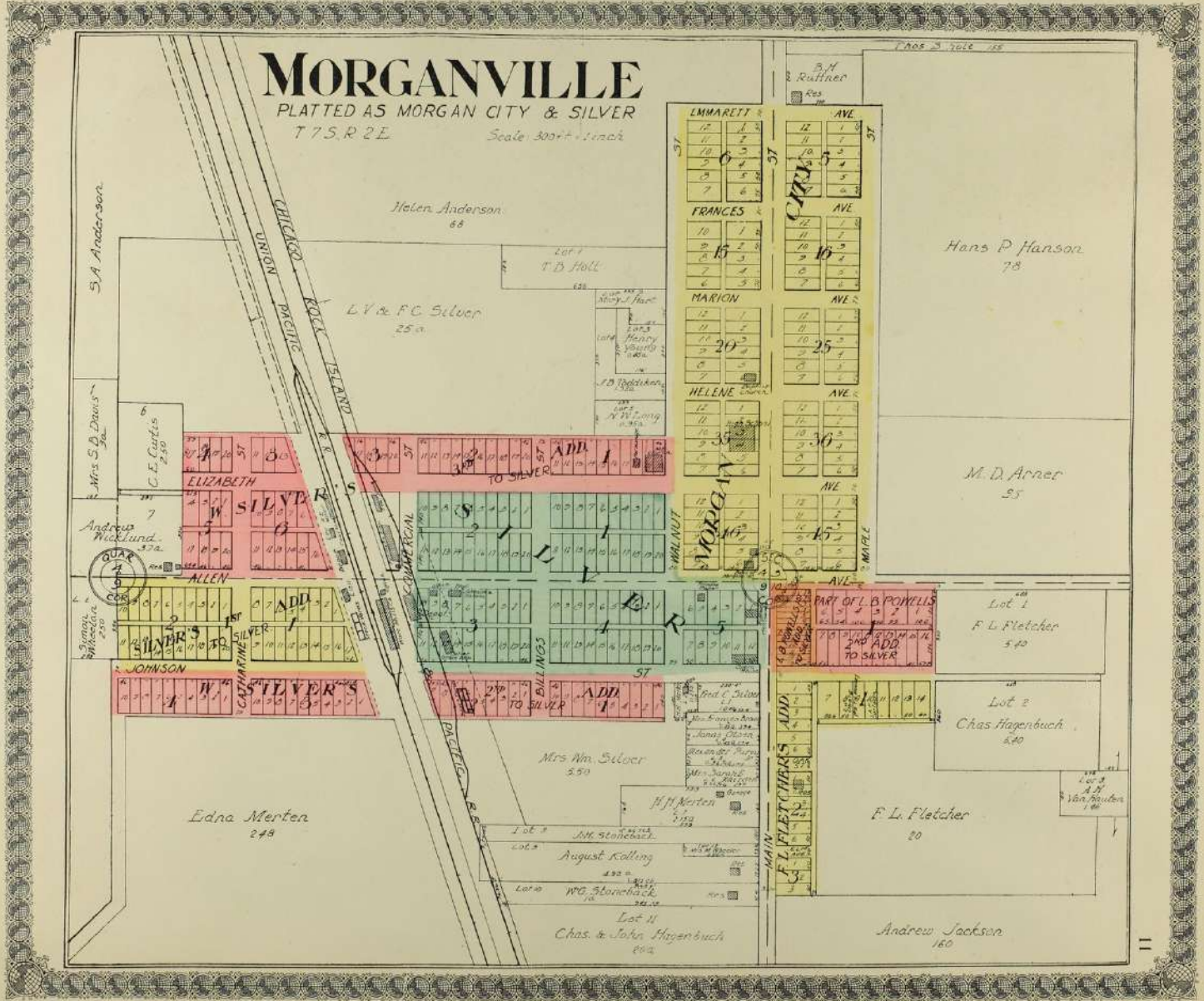
FOR SOUTH PART SEE PAGES

MORGANVILLE

PLATTED AS MORGAN CITY & SILVER

T 7 S. R 2 E

Scale: 300ft = 1 inch



C. F. N. Deetjen
3728

UNION PACIFIC

Jacob Gorman, Est.

SOUTH PART OF
CLAY CENTER
COUNTY SEAT OF CLAY CO., KANS.
T. 8 S., R. 3 E.

Scale 400 feet to 1 inch
Copyright 1908 by Geo. A. Oyle & Co.

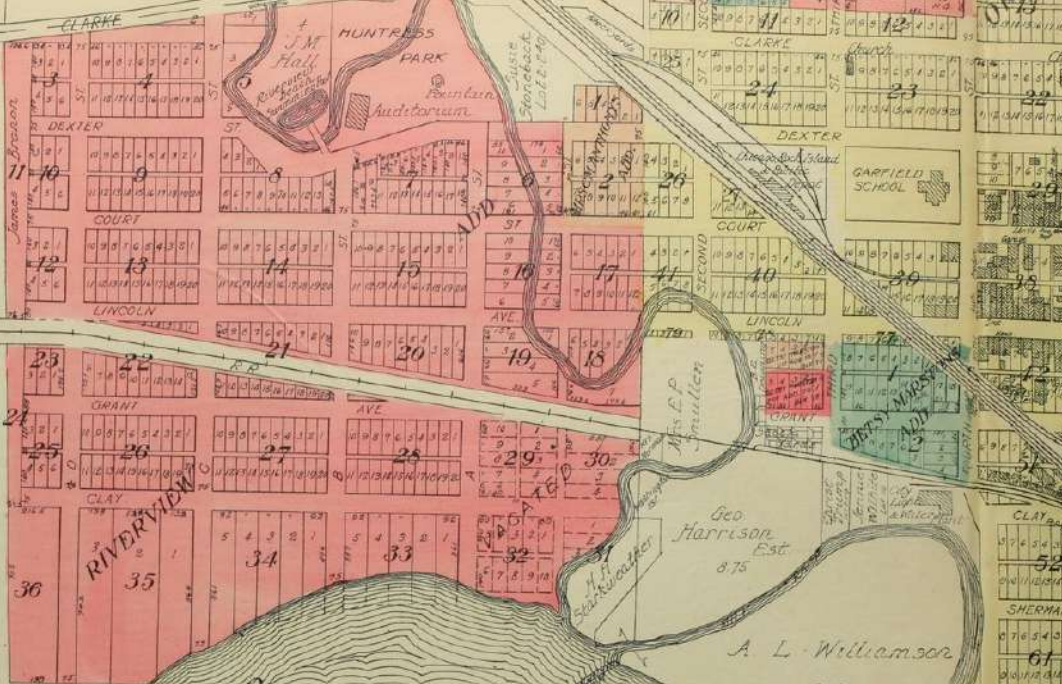
REPUBLICAN

C. D. Osterhout

A. L. Williamson
24 362

Overflow

A. L. Williamson
79 94



RIVER

J.L. Williamson

David Tolles

Ed Thomas
8 05

David Tolles

M. L. Hawley
10

W. G. Robinson
244 54

A. L. Williamson
2 14

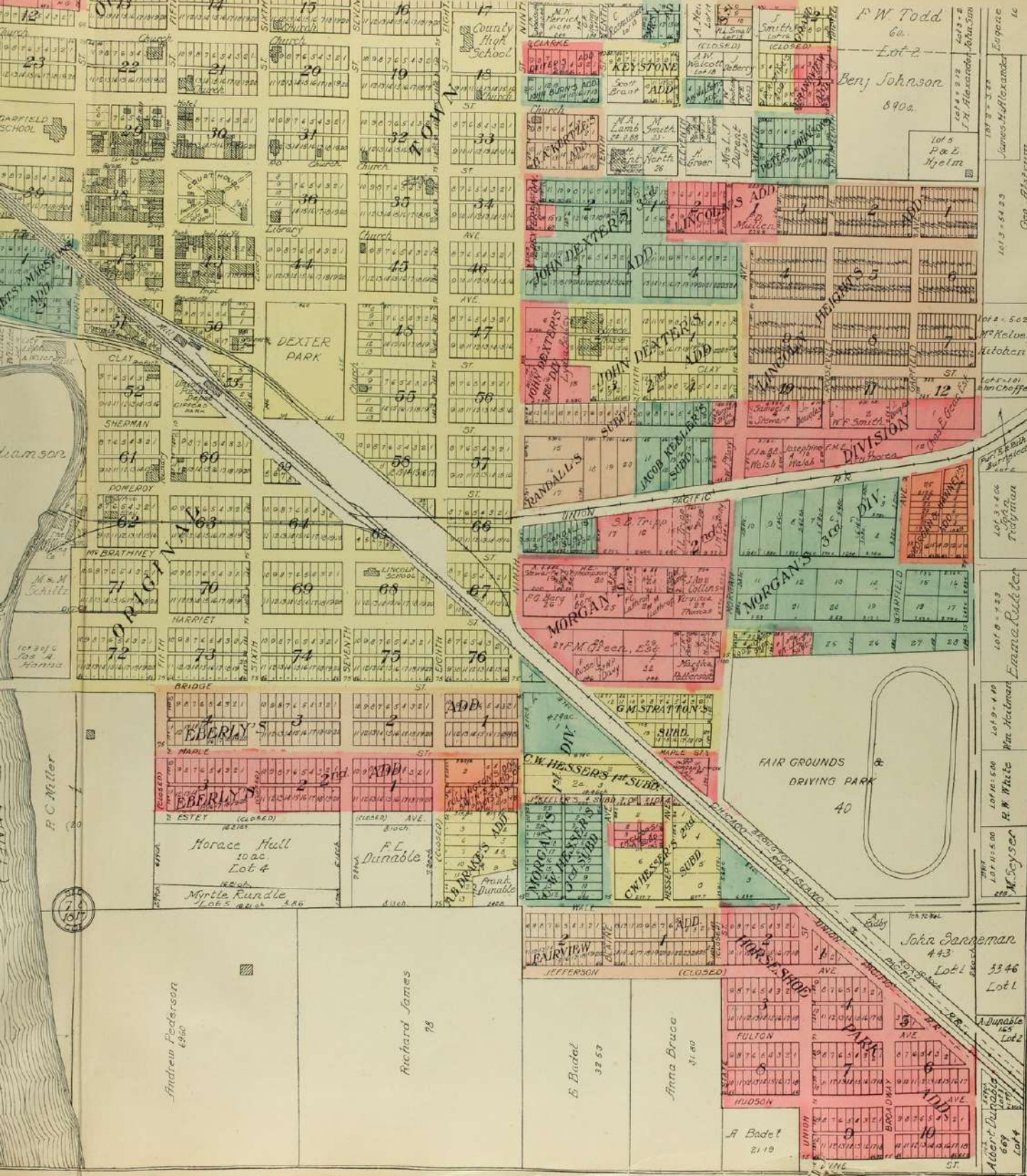
GOLD

CHANNEL

F. C. Miller



SEE PAGES 8 AND 9



Andrew Pederson
1840

Richard James
78

E. Badet
32 59

Anna Bruce
31.80

J. Badet
21.19

John Sanneman
443

Lot 1 33.46
Lot 2

A. Durable
65
Lot 2

Albert Pederson
687
Lot 4

Emma Rubeter
101 0 = 2.33

101 3 = 4.04
Trudgian

101 3 = 51.23
James Hoffmeyer
Geo. Risher, 1877

101 3 = 3.13
J. H. Alexander
John Sim

F.W. Todd
60
Lot 2
Benj. Johnson
890a.

Lot 5
P & E
Hyelm

Lot 1 = 50.2
H. Kelooy
Hoban

Lot 1 = 101
Ann Choffey

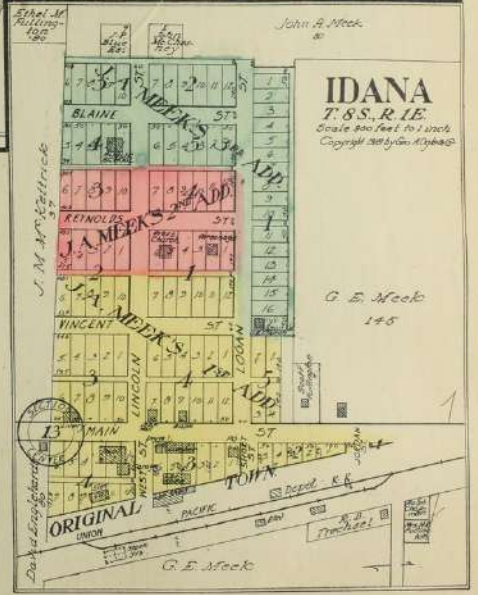
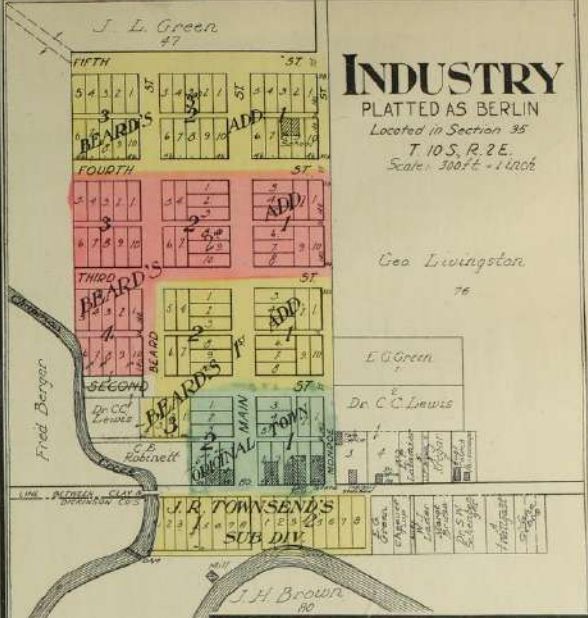
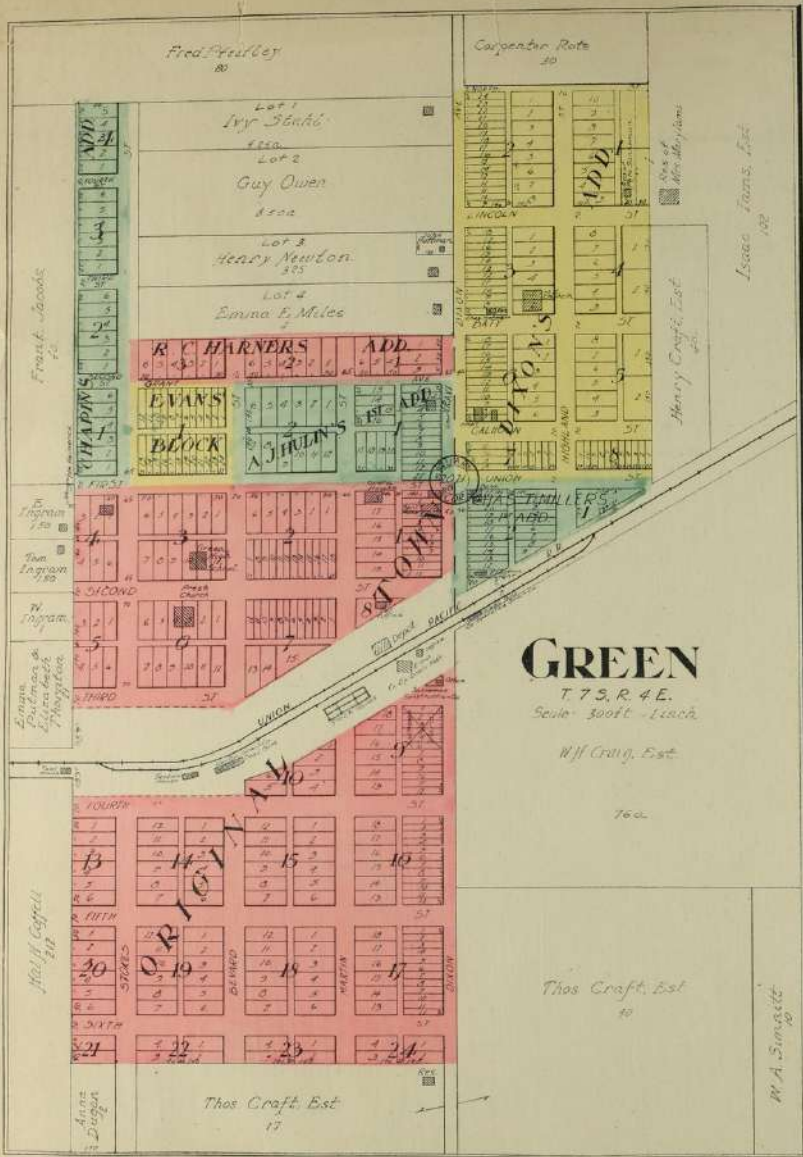
Lot 1 = 1.00
R. W. White
Mrs. Holbrook

Lot 1 = 5.00
M. Seyser

Lot 1 = 1.00
Mrs. White

Lot 1 = 1.00
Mrs. White

Lot 1 = 1.00
Mrs. White



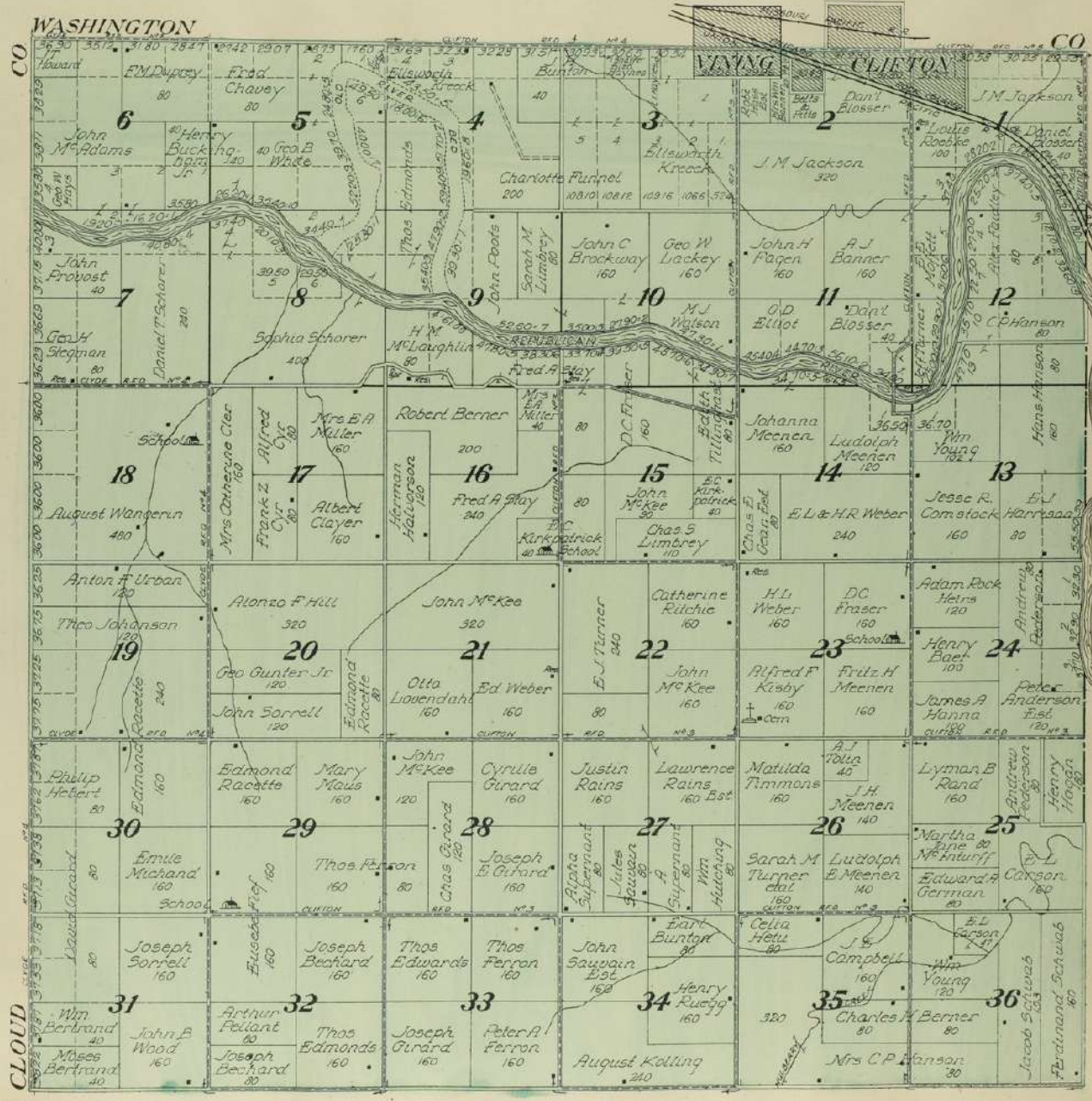


MAP OF

TOWNSHIP 6 S., RANGE 1 E.

 OF THE 6th P. M.

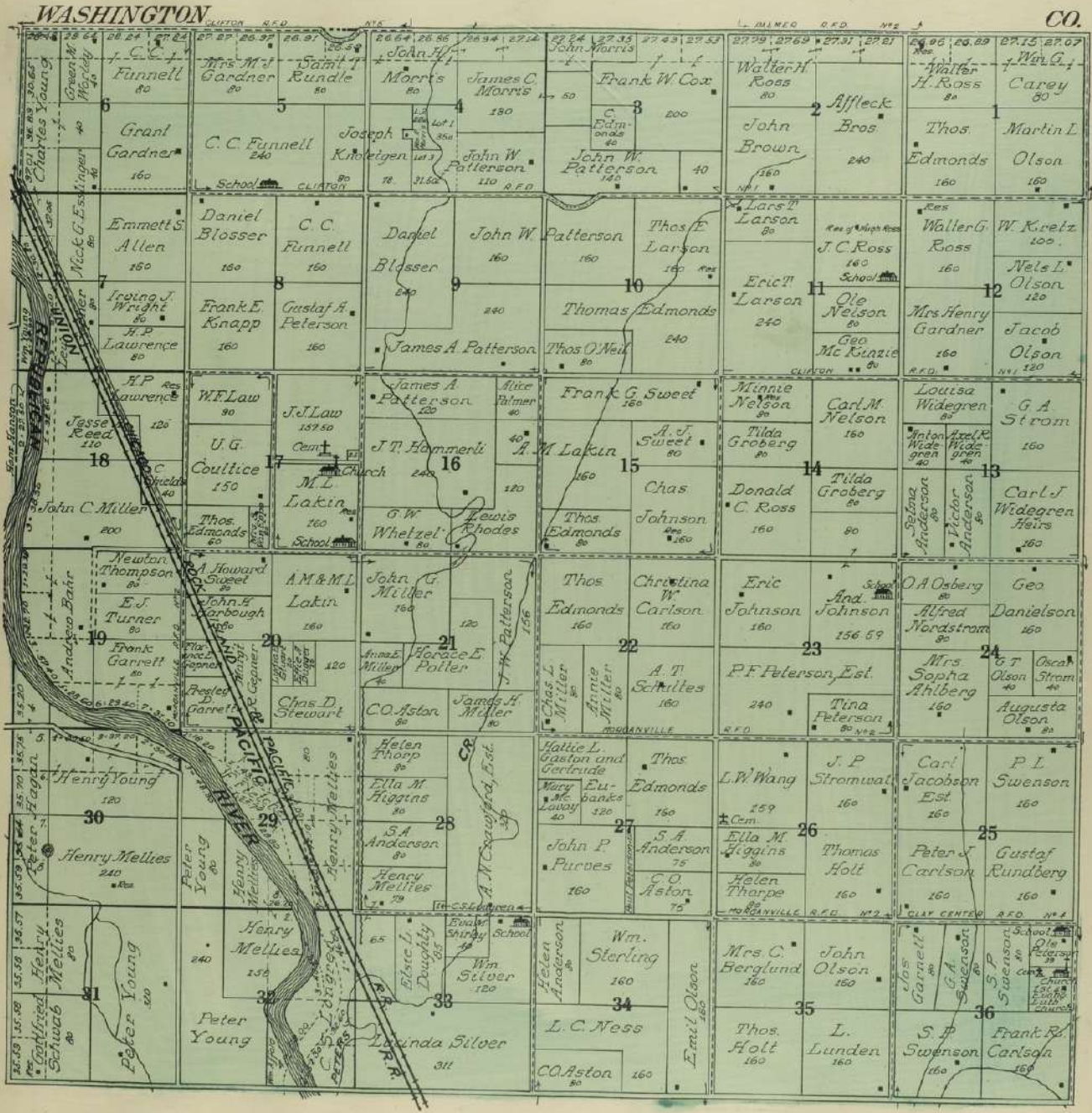
Scale 2 inches to 1 mile





MAP OF
TOWNSHIP 6 S., RANGE 2 E.
 OF THE 6th P.M.

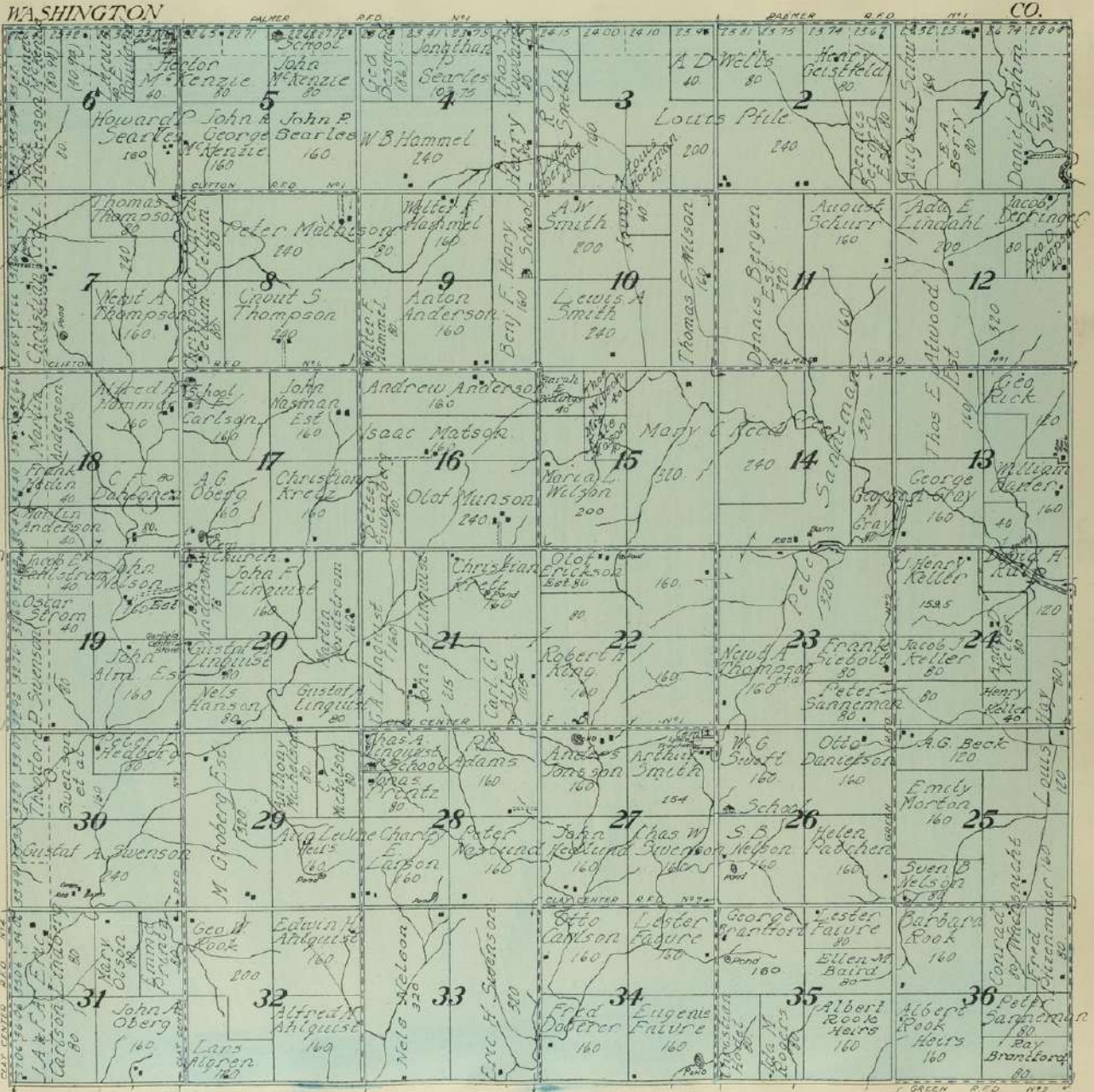
Scale 2 inches to 1 mile

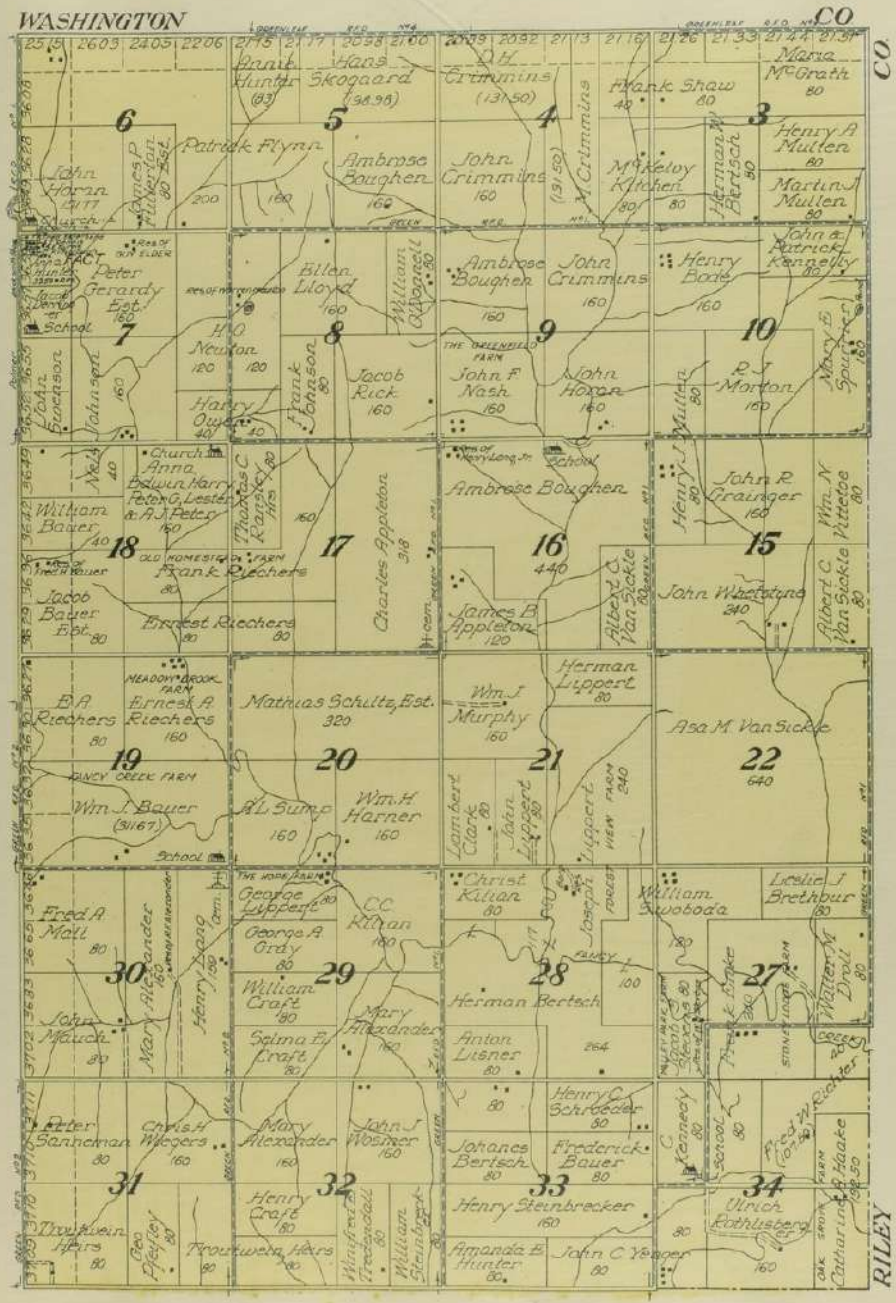




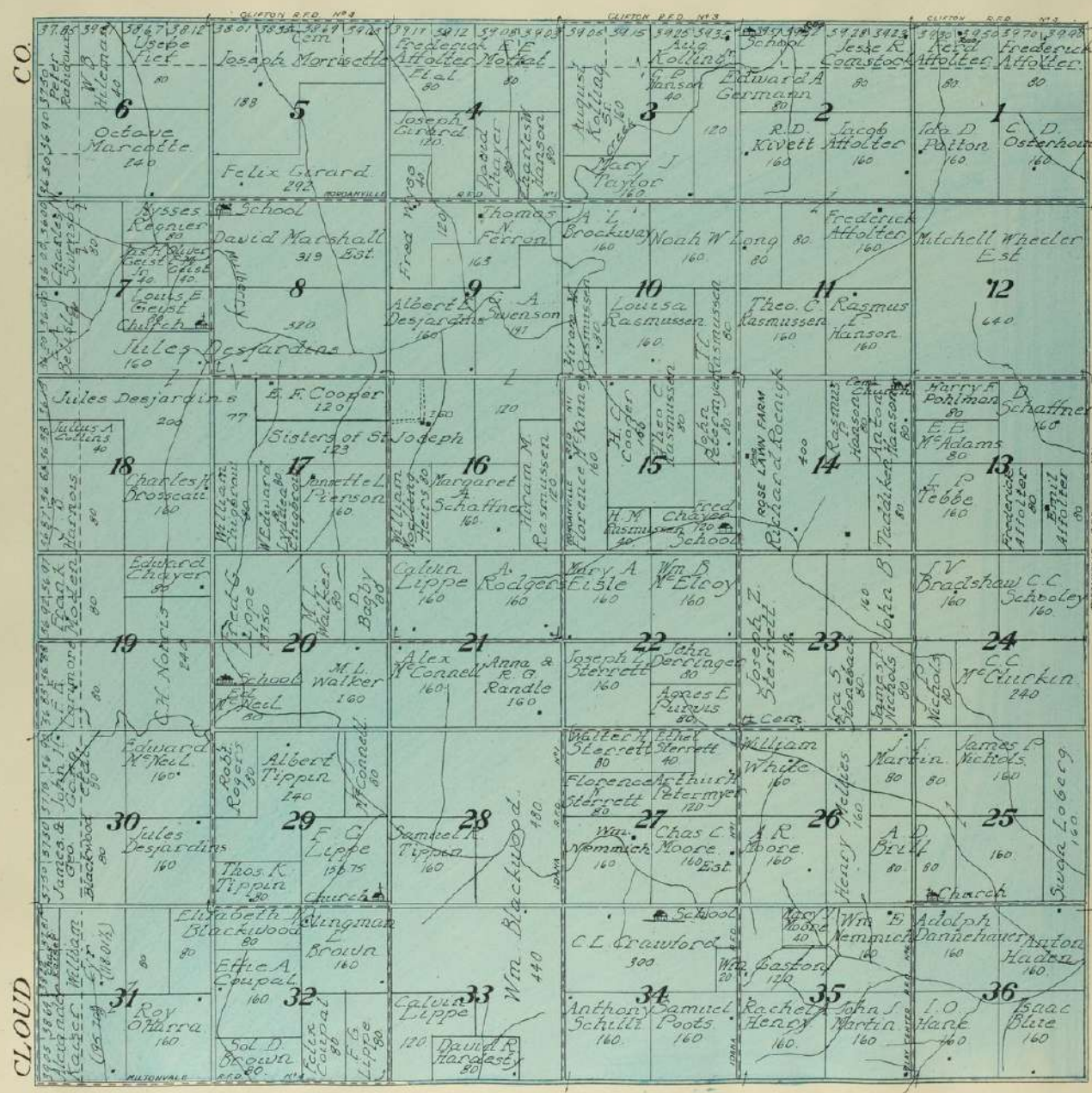
MAP OF
TOWNSHIP 6 S., RANGE 3 E.
 OF THE 6th P. M.

Scale 2 inches to 1 mile



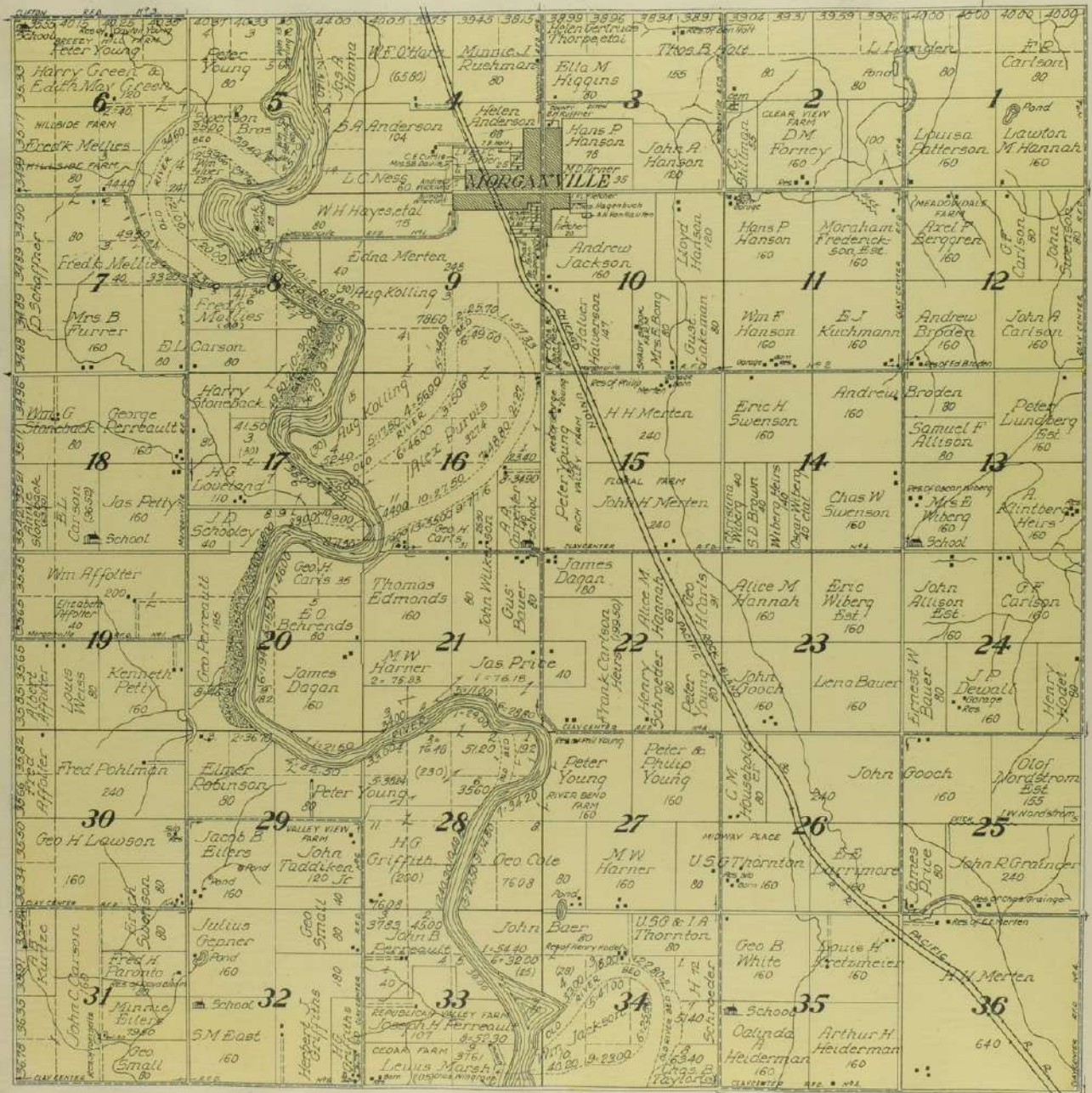


MAP OF
TOWNSHIP 7 S., RANGE 1 E.
 OF THE 6th P. M.
 Scale 2 inches to 1 mile



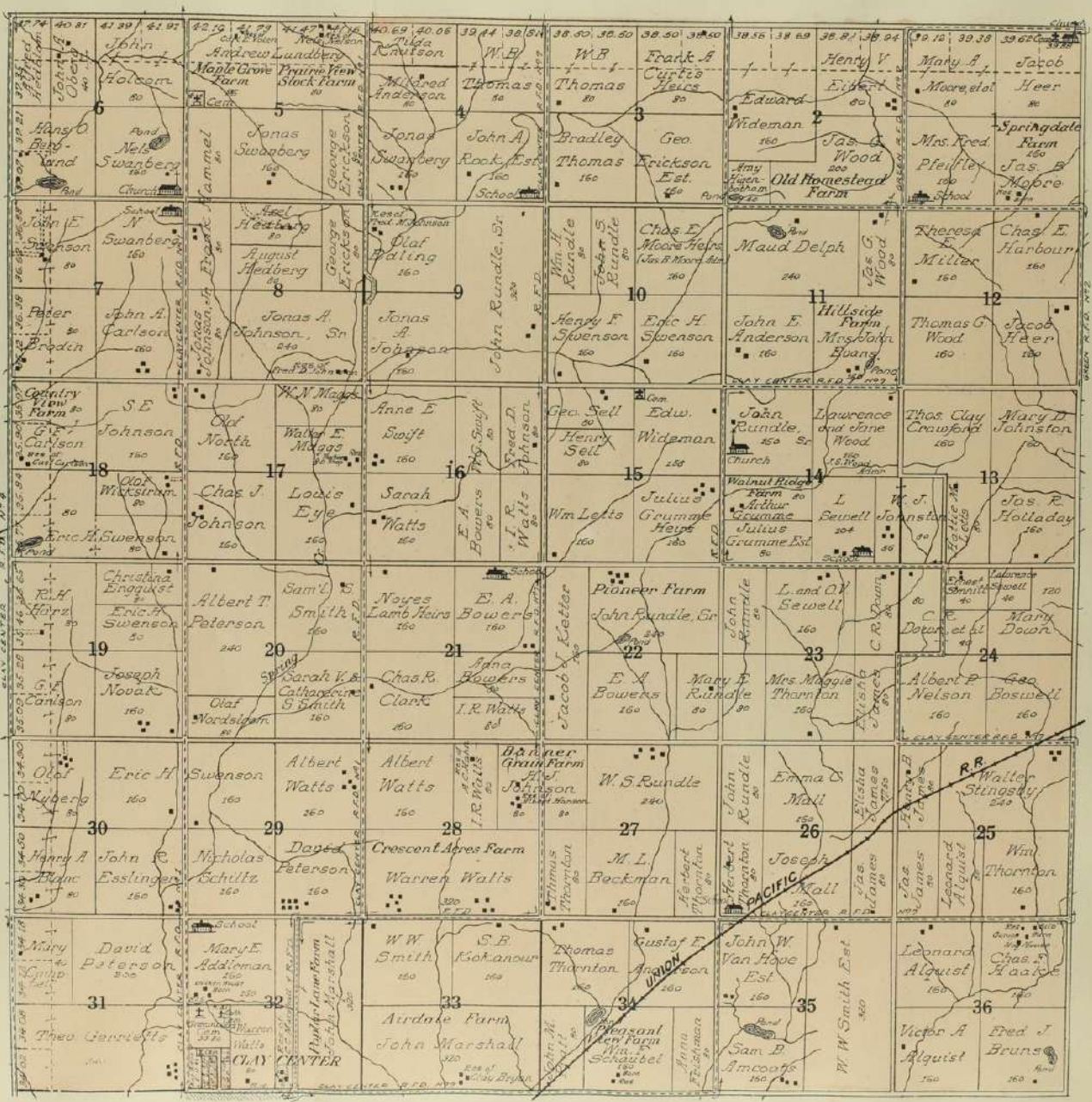


MAP OF
TOWNSHIP 7 S., RANGE 2 E.
 OF THE 6th P.M.
 Scale 2 inches to 1 mile



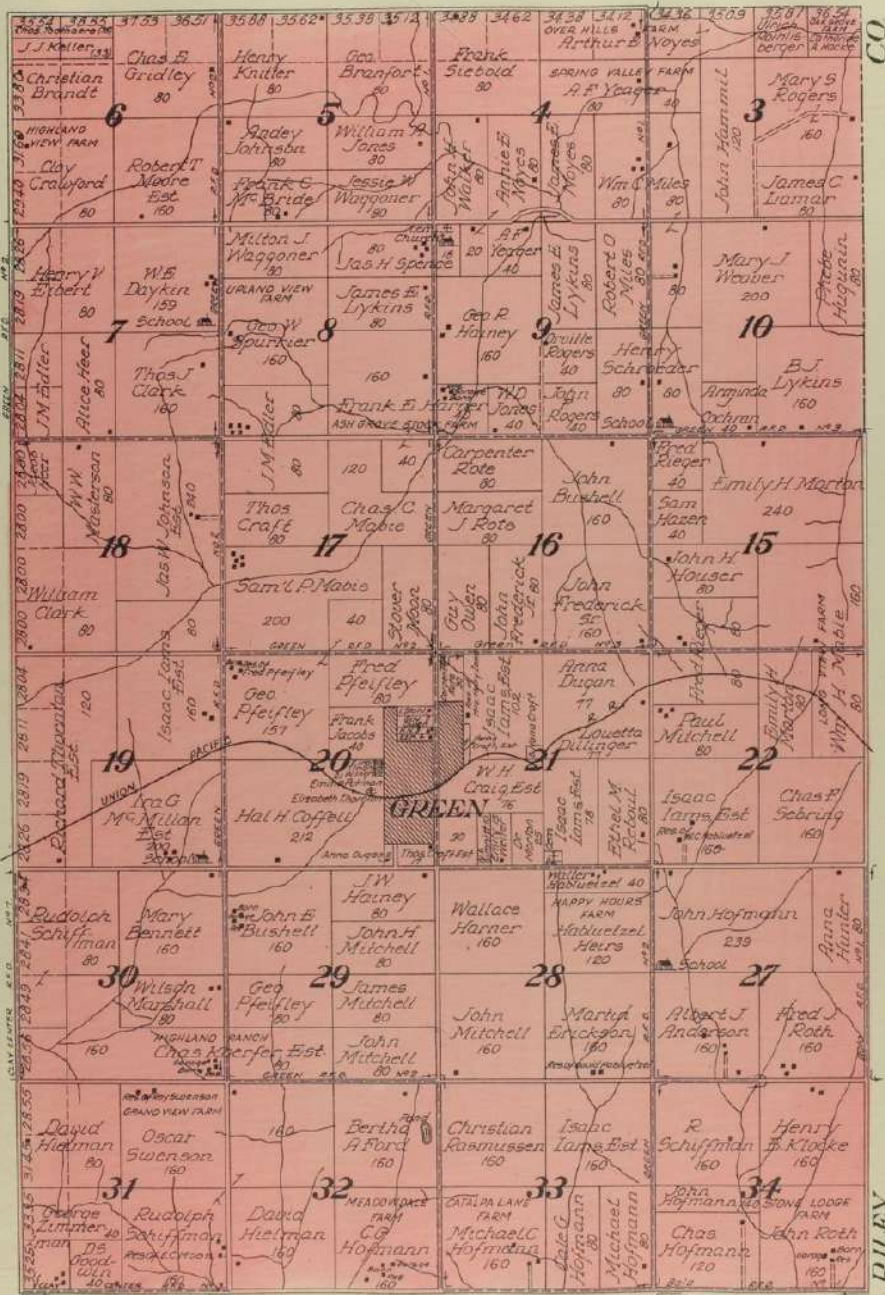


MAP OF
TOWNSHIP 7 S., RANGE 3 E.
 OF THE 6th P. M.
 Scale 2 inches to 1 mile





MAP OF
Part of Township 7 S., Range 4 E.
OF THE 6th P. M.
 Scale 2 inches to 1 mile

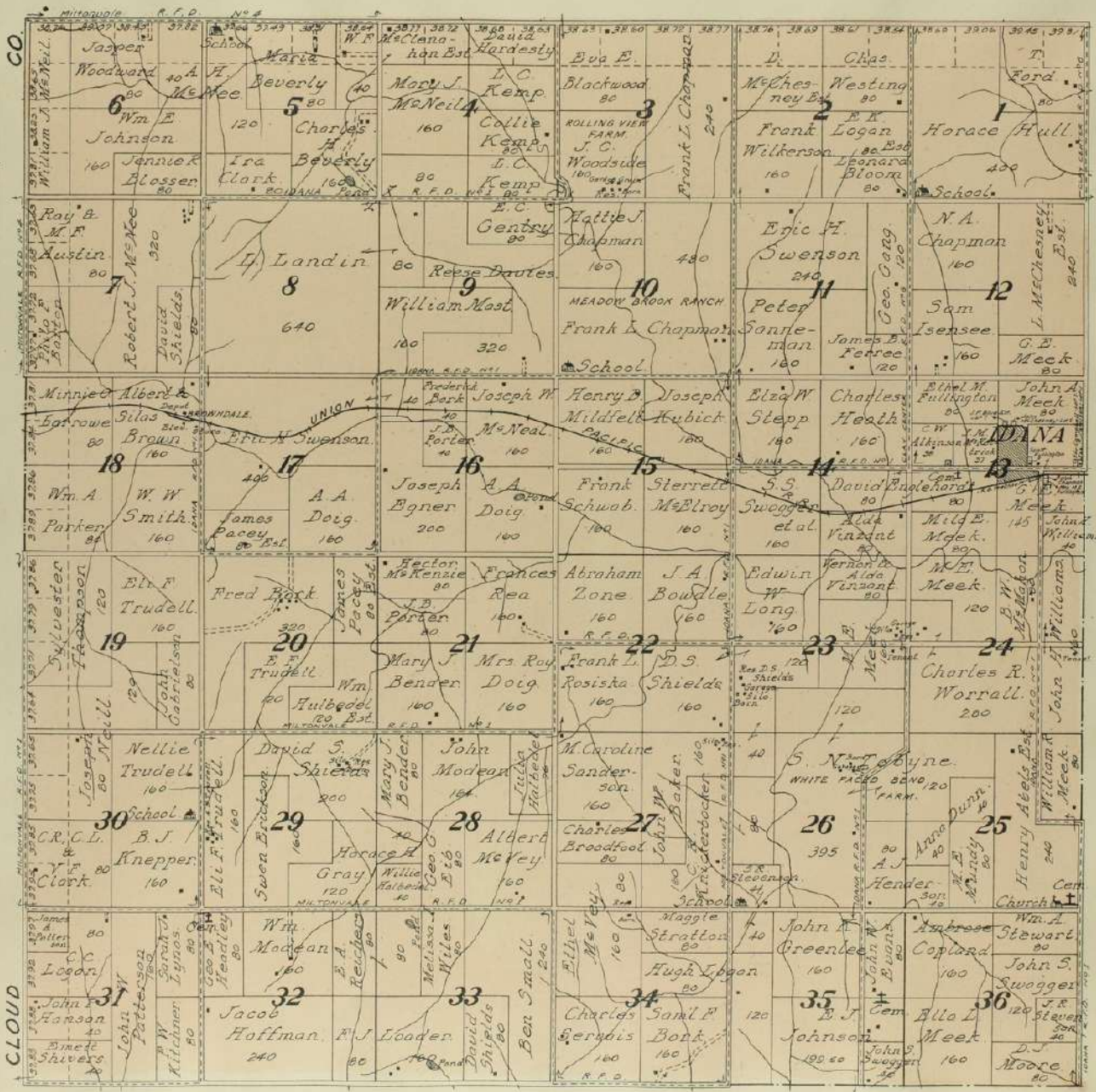


CO

RILEY



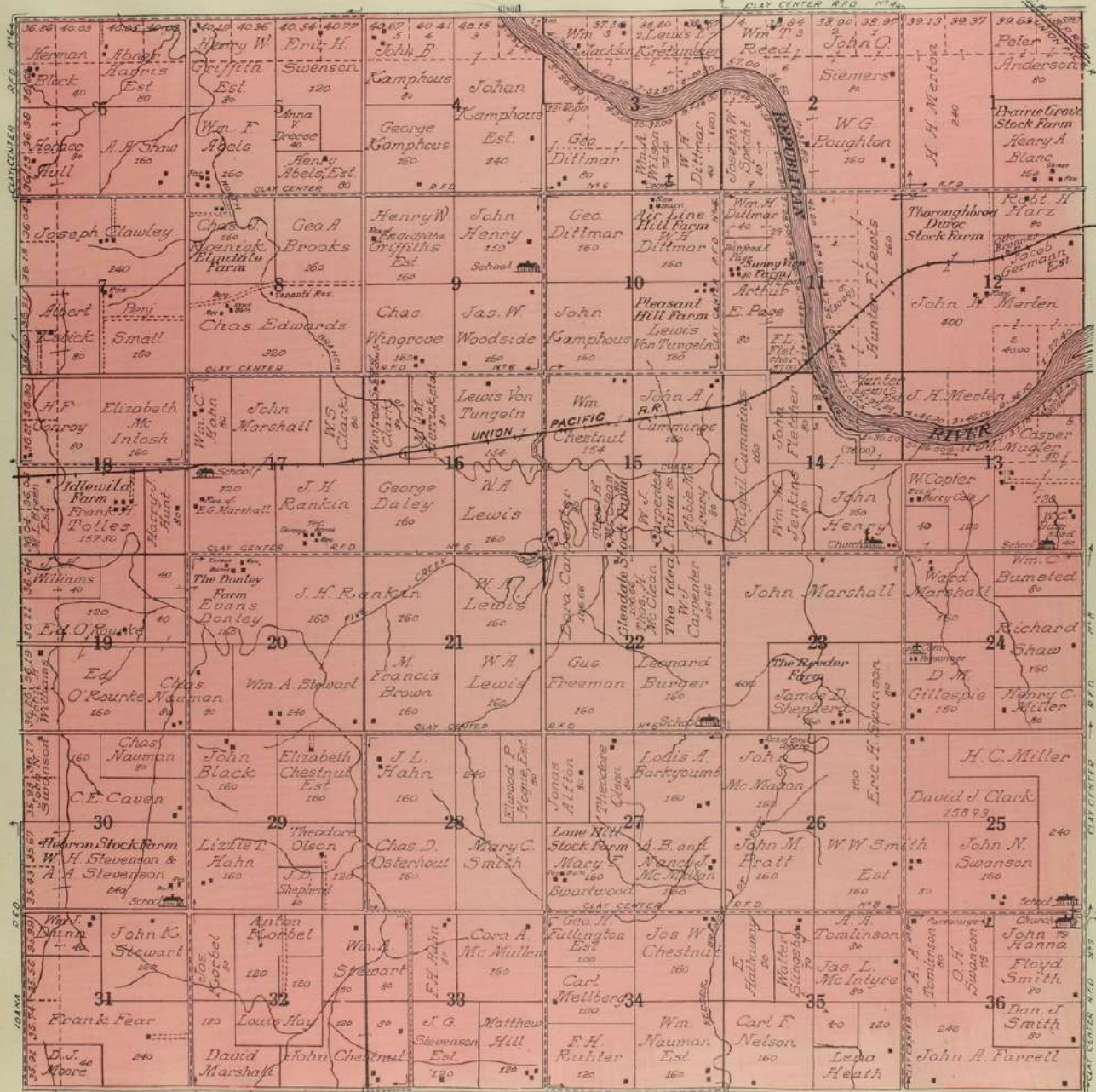
MAP OF
TOWNSHIP 8 S., RANGE 1 E.
 OF THE 6th P. M.
 Scale 2 inches to 1 mile



KANSAS STATE HISTORICAL SOCIETY

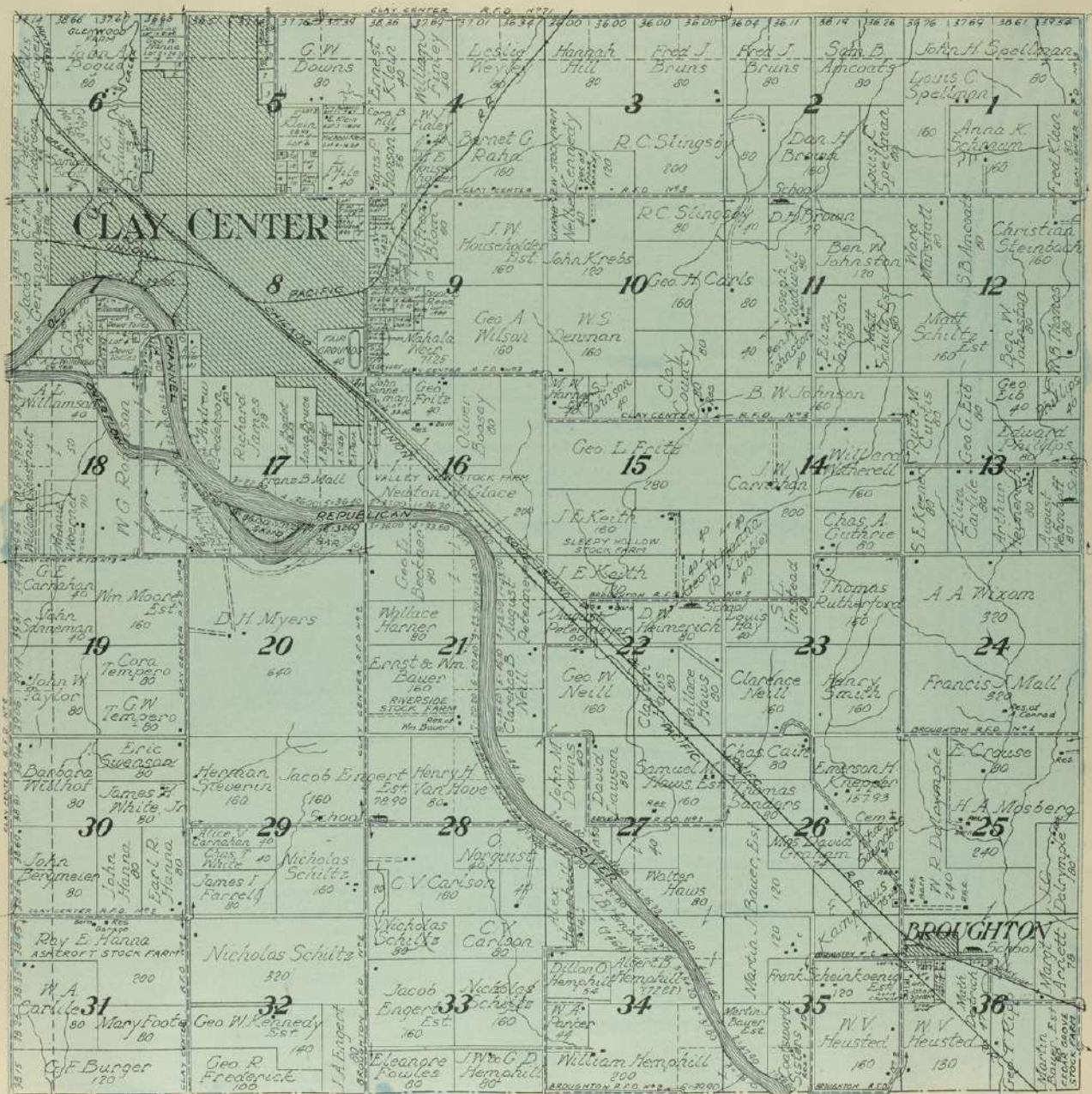


MAP OF
TOWNSHIP 8 S., RANGE 2 E.
 OF THE 6th P. M.
 Scale 2 inches to 1 mile





MAP OF
TOWNSHIP 8 S., RANGE 3 E.
 OF THE 6th P. M.
 Scale 2 inches to 1 mile



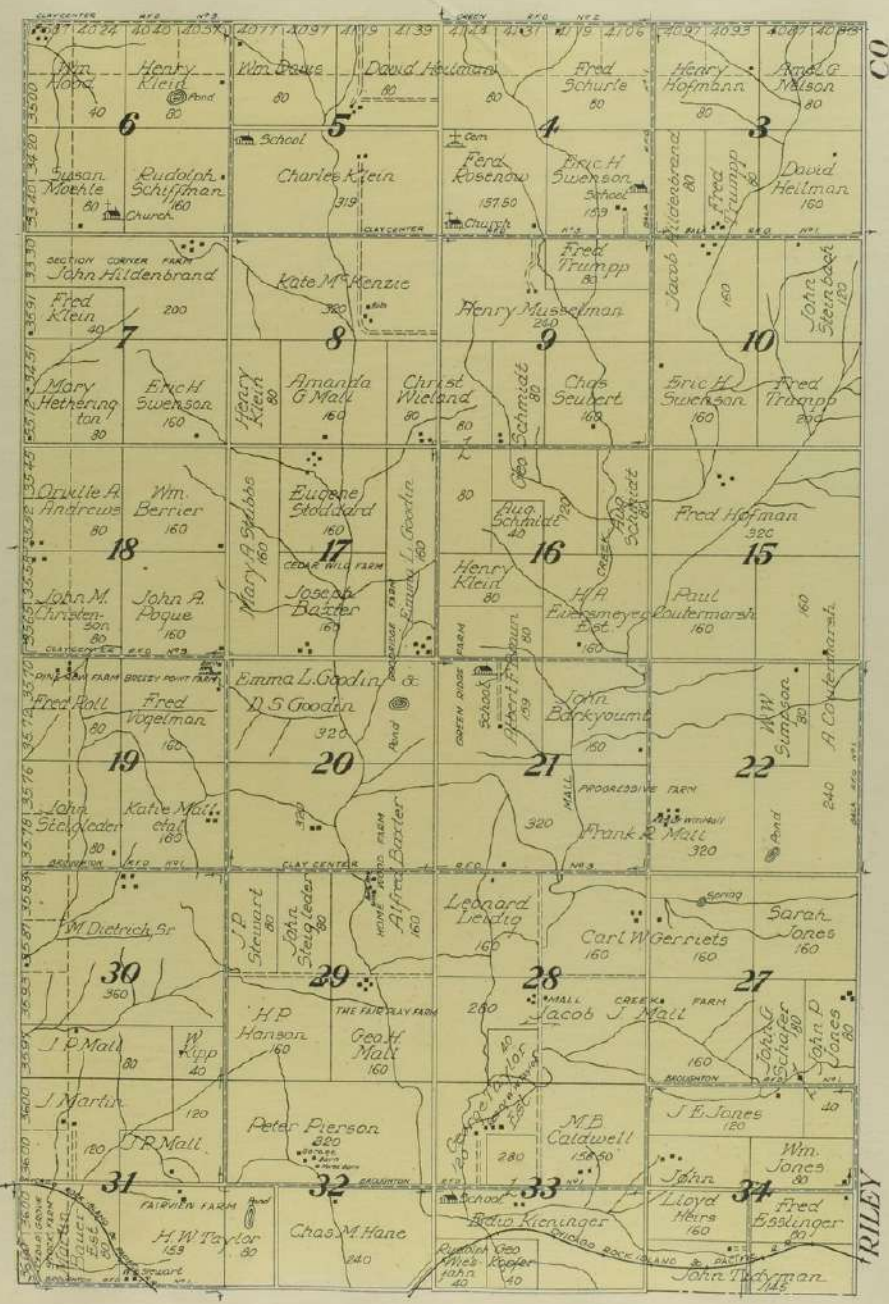


MAP OF

Part of Township 8 S., Range 4 E.

OF THE 6th P. M.

 Scale 2 inches to 1 mile





MAP OF
TOWNSHIP 9 S., RANGE 2 E.
 OF THE 6th P. M.

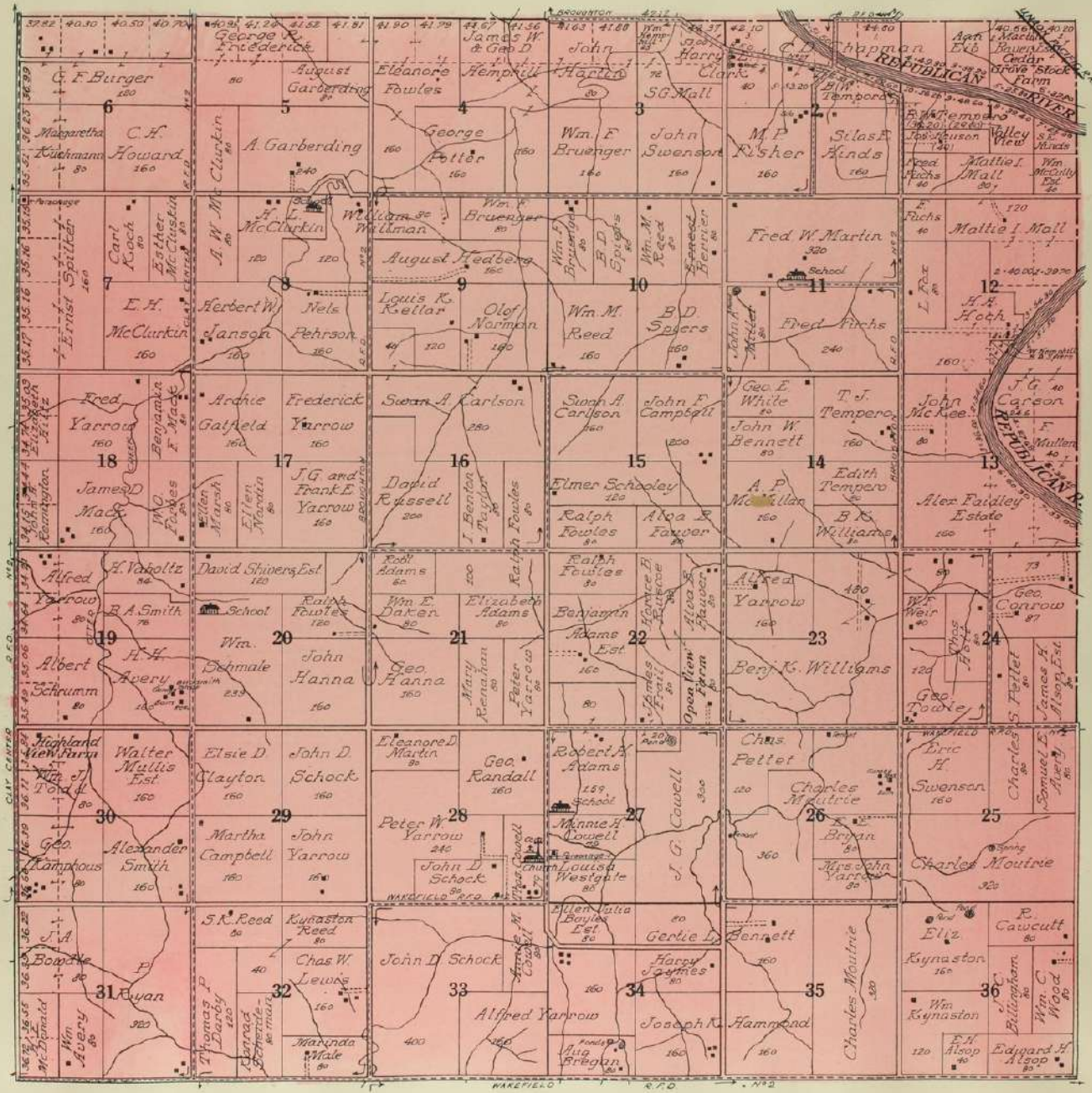
Scale 2 inches to 1 mile





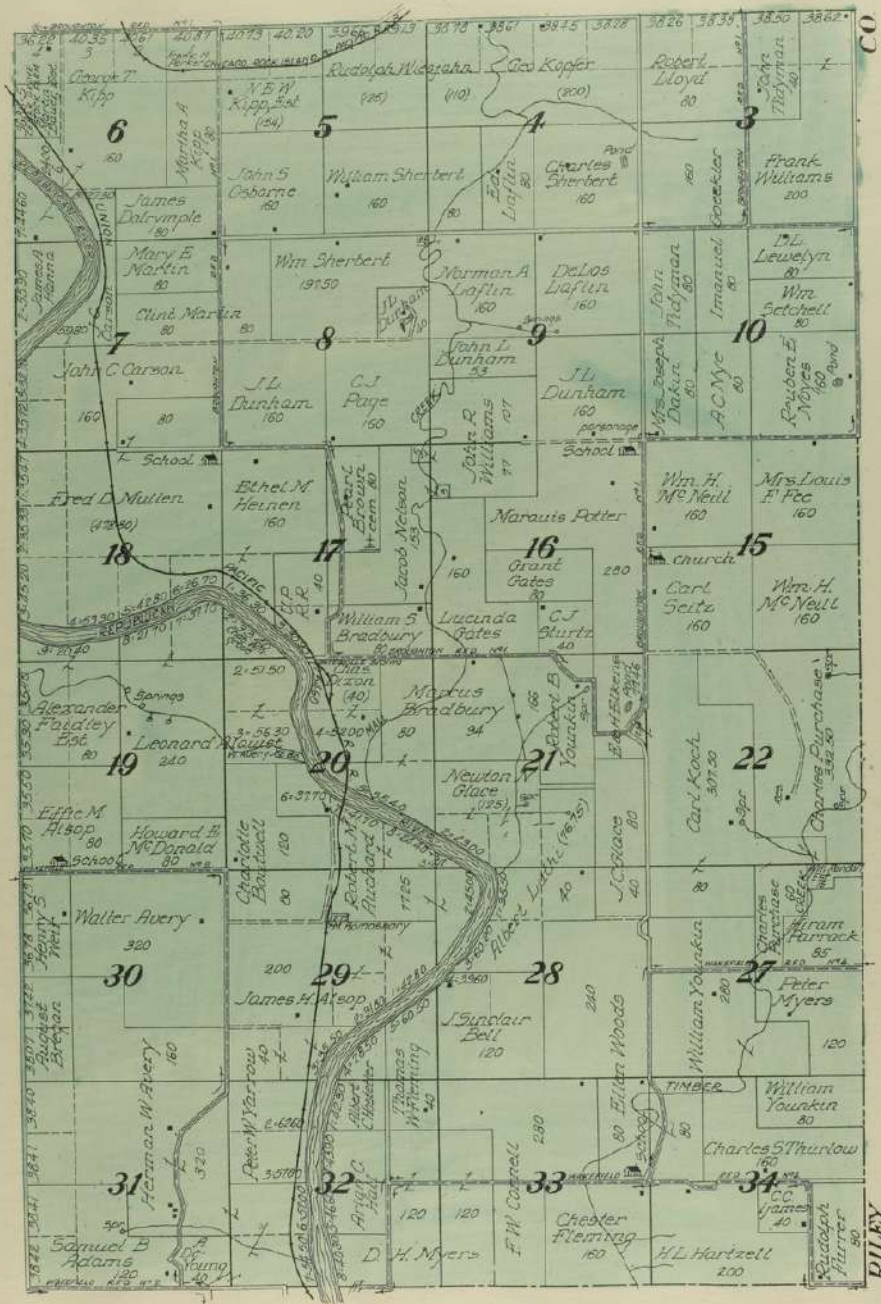
MAP OF
TOWNSHIP 9 S., RANGE 3 E.
 OF THE 6th P. M.

Scale 2 inches to 1 mile





MAP OF
Part of Township 9 S., Range 4 E.
OF THE 6th P. M.
 Scale 2 inches to 1 mile



RILEY

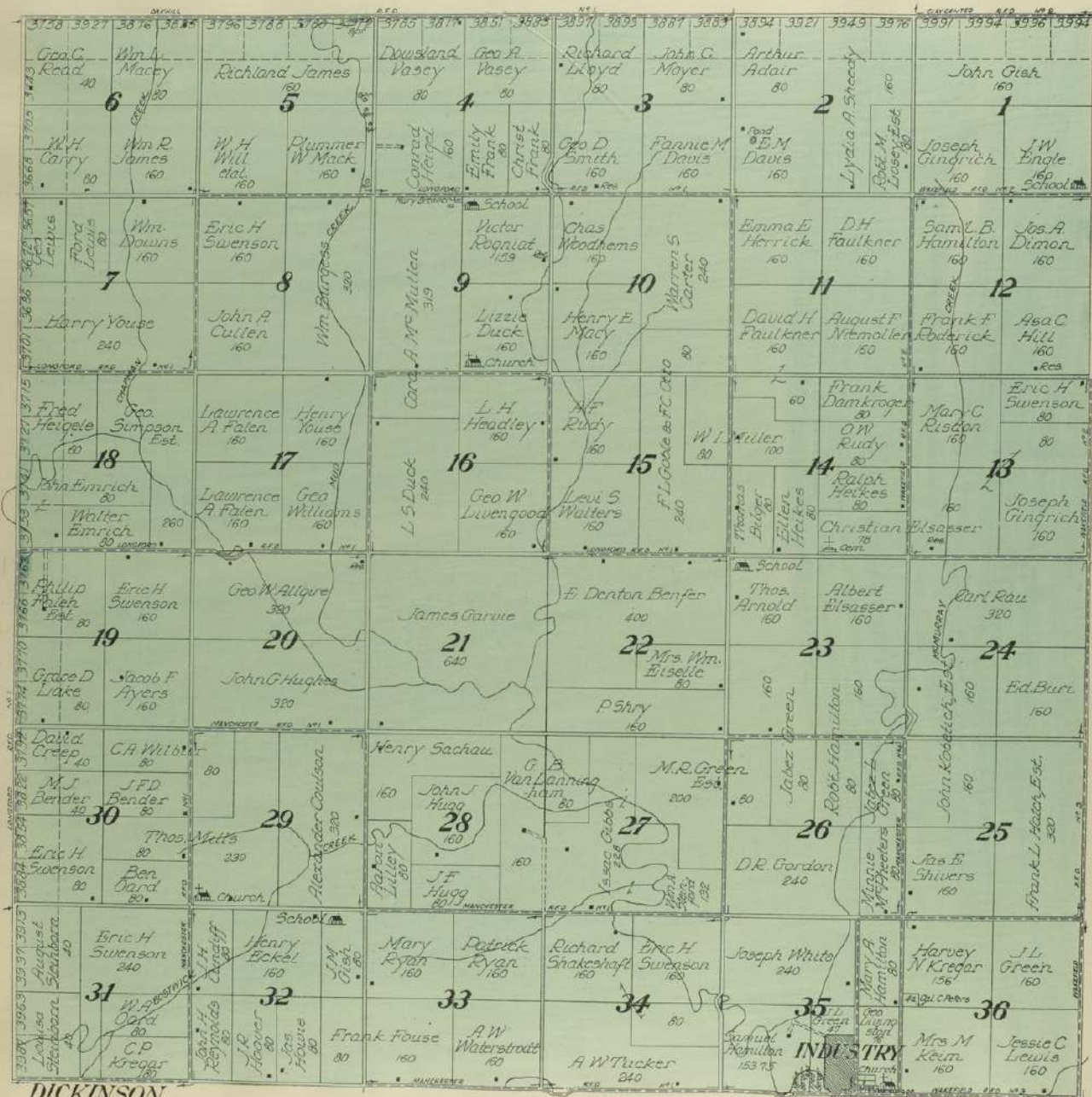


MAP OF

TOWNSHIP 10 S., RANGE 2 E.

 OF THE 6th P. M.

Scale 2 inches to 1 mile



DICKINSON

CO

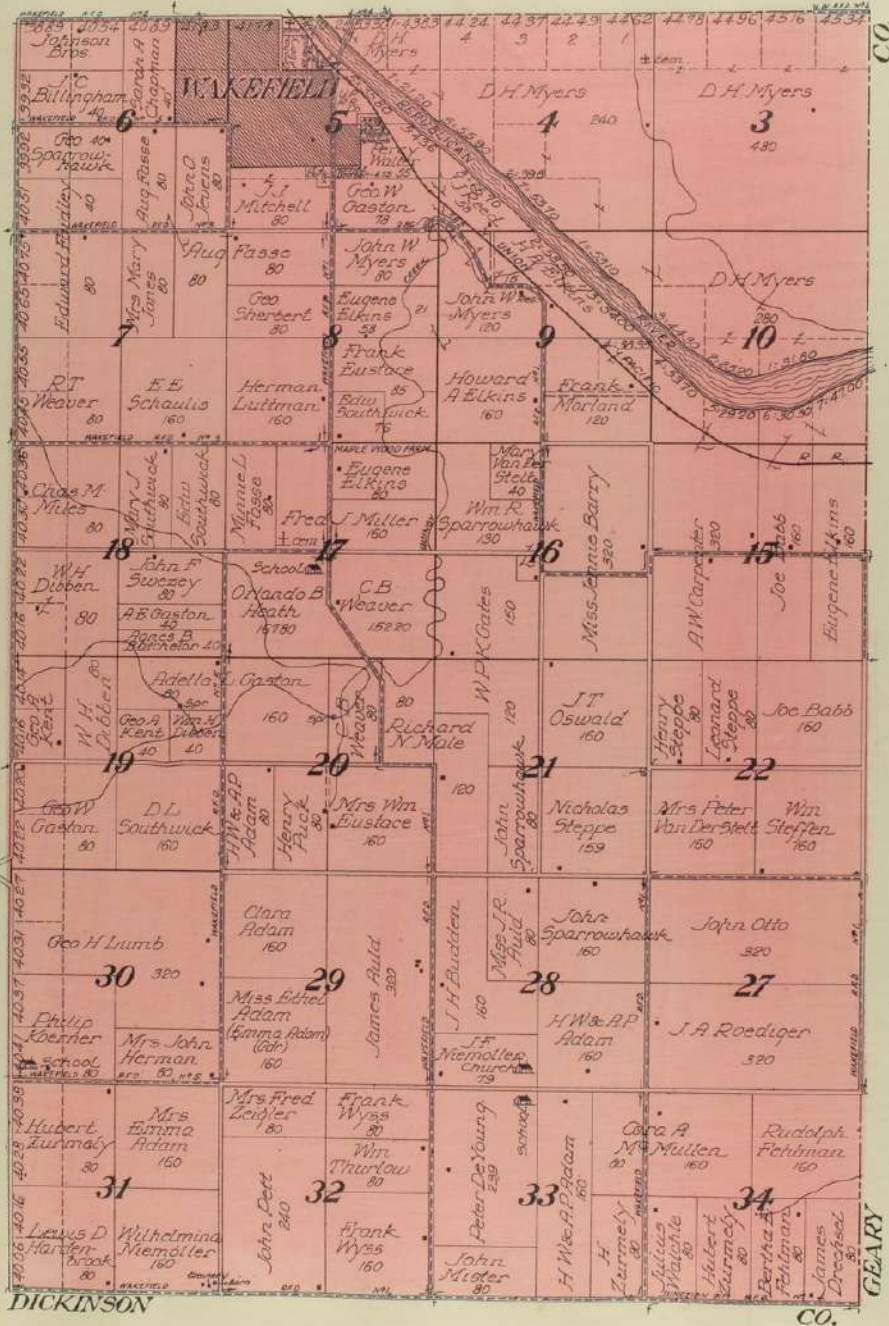


MAP OF

Part of Township 10 S., Range 4 E.

OF THE 6th P. M.

Scale 2 inches to 1 mile



DICKINSON

GEARY CO.