

Diversity  
K  
912291  
D71  
1704

9150  
LH 442  
D71  
LH 422  
D71

KANSAS STATE  
HISTORICAL SOC.

PLAT BOOK  
OF

DONIPHAN

COUNTY.

KANSAS.

COMPILED FROM COUNTY RECORDS AND ACTUAL SURVEYS.

PUBLISHED BY THE  
NORTHWEST PUBLISHING CO.  
MINNEAPOLIS, MINN.  
1904

Registered by  
SALLET & WALK  
37 S. 3rd St. Minn.

126

# TABLE OF CONTENTS

## DONIPHAN COUNTY, KANSAS.

### CIVIL TOWNSHIP MAPS.

	PAGE		PAGE
RURR OAK .....	12, 13, 24, 25	UNION .....	27
CENTER .....	8, 12, 17, 26	WAYNE .....	30, 32
IOWA .....	4, 5, 8	WOLF RIVER .....	16, 17, 30
MARION .....	20, 21, 22, 30	WASHINGTON .....	25, 24, 25

### CONGRESSIONAL TOWNSHIPS.

	PAGE		PAGE
TOWNSHIP 1 SOUTH, RANGE 19 EAST .....	4	TOWNSHIP 3 SOUTH, RANGE 21 EAST .....	29
"  1  "  "  20 .....	4	"  3  "  "  22 .....	24
"  2  "  "  19 .....	7	"  3  "  "  19 .....	25
"  2  "  "  20 .....	8	"  4  "  "  23 .....	30
"  2  "  "  21 .....	12	"  4  "  "  20 .....	30
"  2  "  "  22 .....	10	"  4  "  "  21 .....	32
"  3  "  "  19 .....	10	"  4  "  "  22 .....	30
"  3  "  "  20 .....	17	"  5  "  "  23 .....	25
		"  5  "  "  21 .....	22

### CITIES AND TOWNS.

	PAGE		PAGE
BRENNER .....	31	LEONA .....	22
BRENDA (Alton) .....	22	MORAY (East Norway) .....	22
DONIPHAN .....	24 and 25	PALEMO .....	37
DENTONVILLE .....	27	PURCELL .....	21
ELWOOD .....	21	SEVERANCE .....	23
GEARY CITY .....	30	TROY .....	17 and 19
HIGHLAND .....	14 and 15	TROY JUNCTION (MAYBARD) .....	45
HIGHLAND STATION .....	5	WATHENA .....	28 and 29
IOWA POINT .....	19 and 14	WHITE CLOUD .....	6 and 7

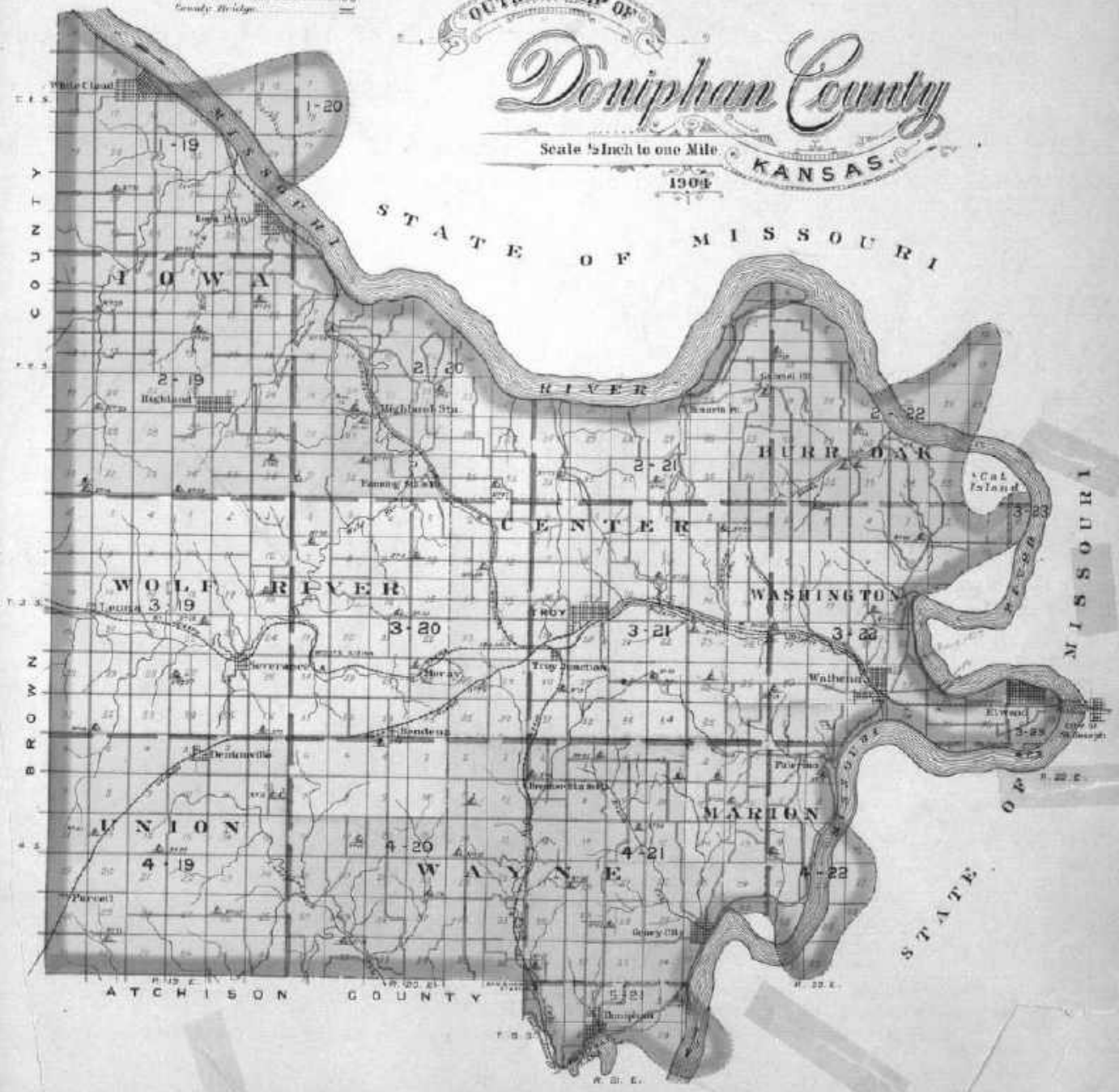
### MISCELLANEOUS.

	PAGE		PAGE
OUTLINE MAP OF DONIPHAN COUNTY .....	3	SYSTEM OF GOVERNMENTAL SURVEYS .....	31
TABLE OF EXPLANATIONS .....	4	PRINCIPAL MERIDIANS AND BASE LINES .....	32 and 33
STATE MAP OF KANSAS .....	40 and 41	STANDARD TIME BELTS .....	32
UNITED STATES MAP .....	44 and 45	ROAD LAWS OF VARIOUS STATES .....	
MAP OF THE WORLD .....	43 and 48	PATRONS' DIRECTORY .....	

**EXPLANATION**

Section lines  
 Rivers or Cat Tails  
 Water Ways  
 Railroad  
 Branch or Springs  
 Wells  
 Churches  
 School Houses  
 Artificial Islands created by man parts connected by a bank, thus  
 Rail Road or Ferry Road  
 County Bridge

OUTLINE MAP OF  
**Doniphan County**  
 Scale 1/2 Inch to one Mile  
 1904  
 KANSAS

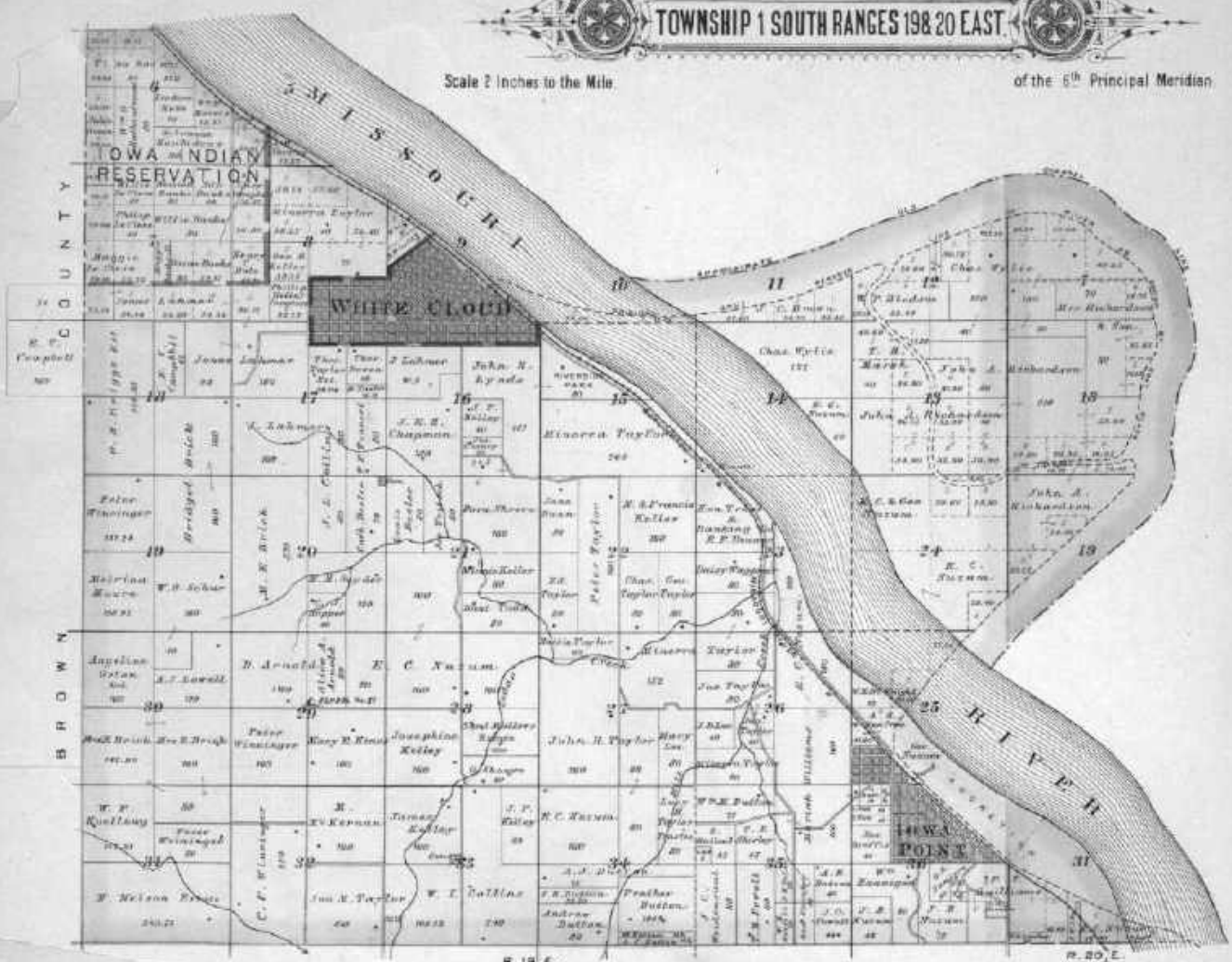


A. S. E.

TOWNSHIP 1 SOUTH RANGES 19& 20 EAST

Scale 2 Inches to the Mile

of the 5th Principal Meridian



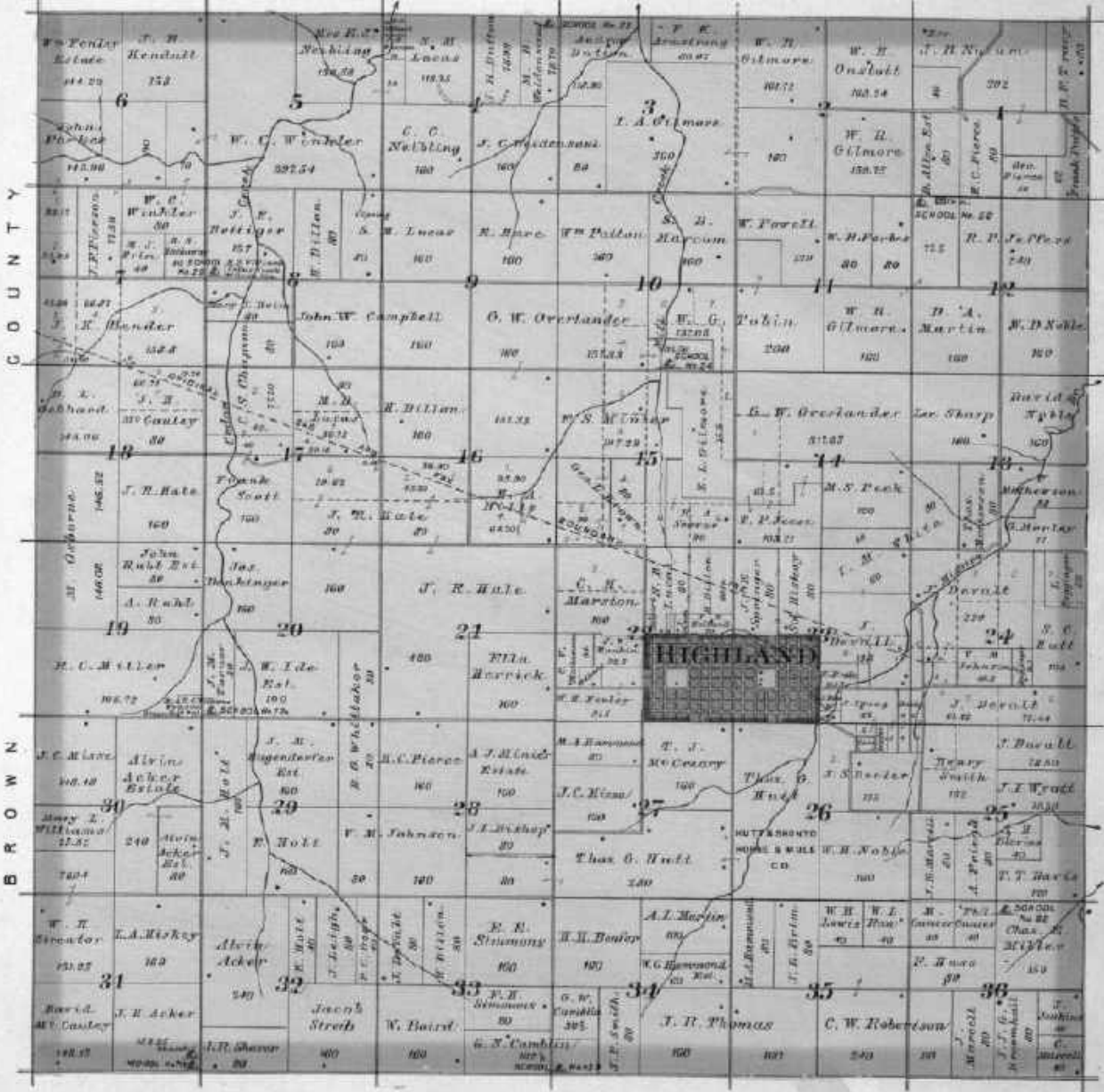
R. 19, E.

R. 20, E.

# TOWNSHIP 2 SOUTH RANGE 19 EAST.

Scale 2 Inches to the Mile.

of the 6<sup>th</sup> Principal Meridian.



**WHITE CLOUD**

LOCATED IN IOWA TERR  
*North South to 1 inch*

William Taylor

Joseph White

Richard White



Thomas Taylor, Esq.

Thomas Hume

J. C. Hume

John H. Cook

# TOWNSHIP 2 SOUTH RANGE 20 EAST

Scale 2 Inches to the Mile.

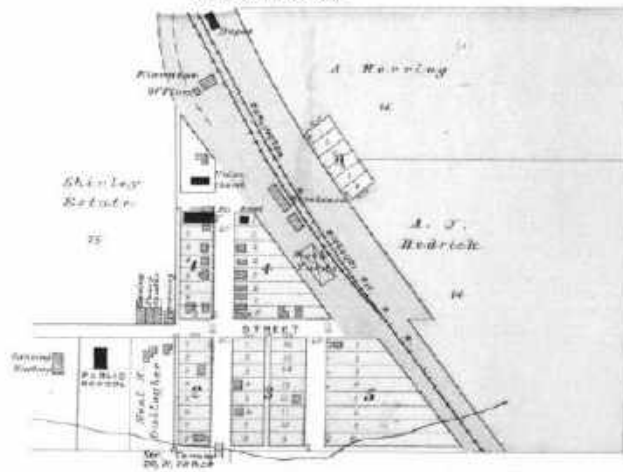
of the 6<sup>th</sup> Principal Meridian.



*Half back note*

# HIGHLAND STATION

Scale 300 Ft. to 1 Inch.





# IOWA POINT

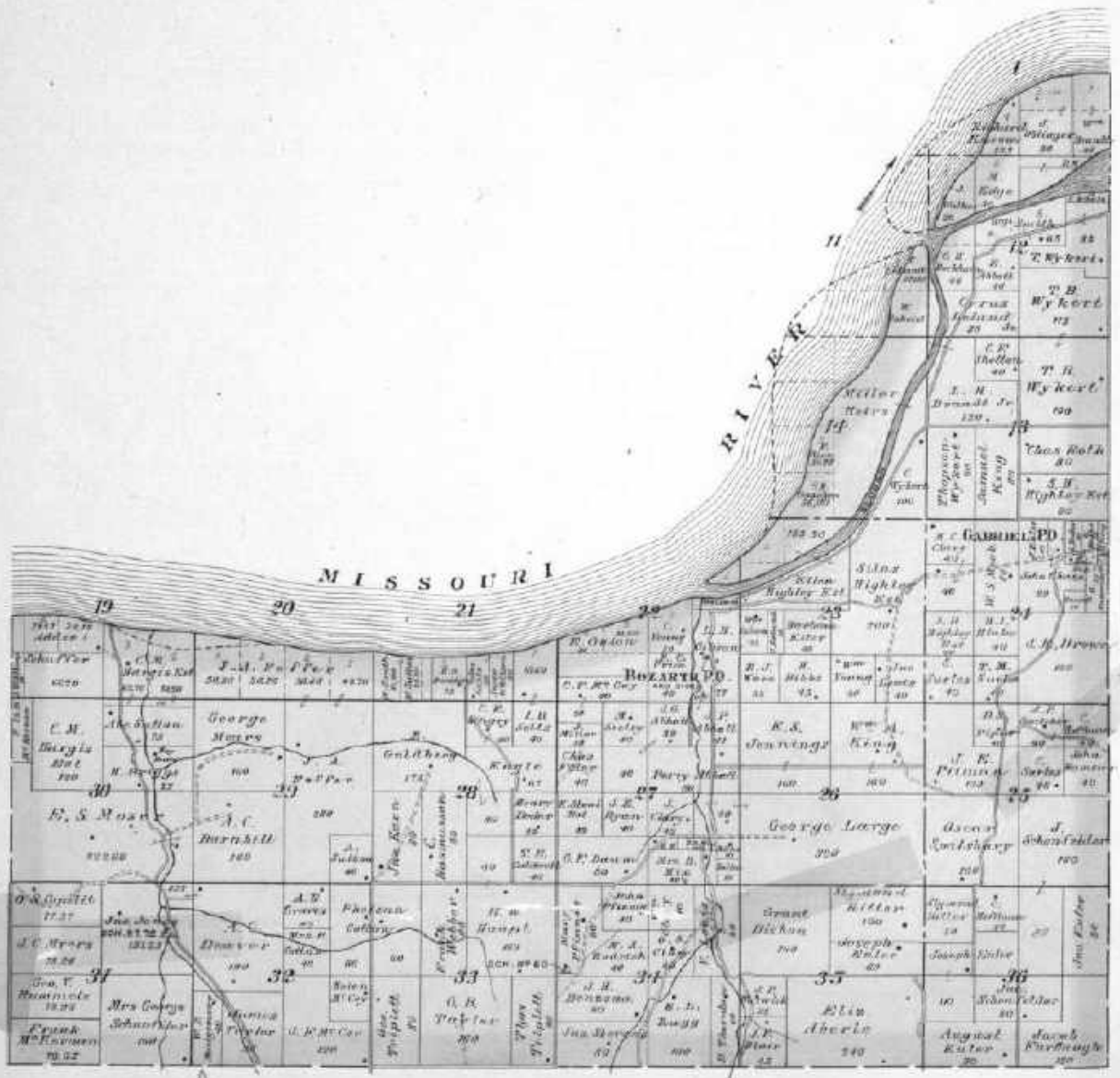
LOCATED IN IOWA TWP  
Scale 3000' to 1" 1898



# TOWNSHIP 2 SOUTH RANGE 21 EAST

Scale 2 Inches to the Mile

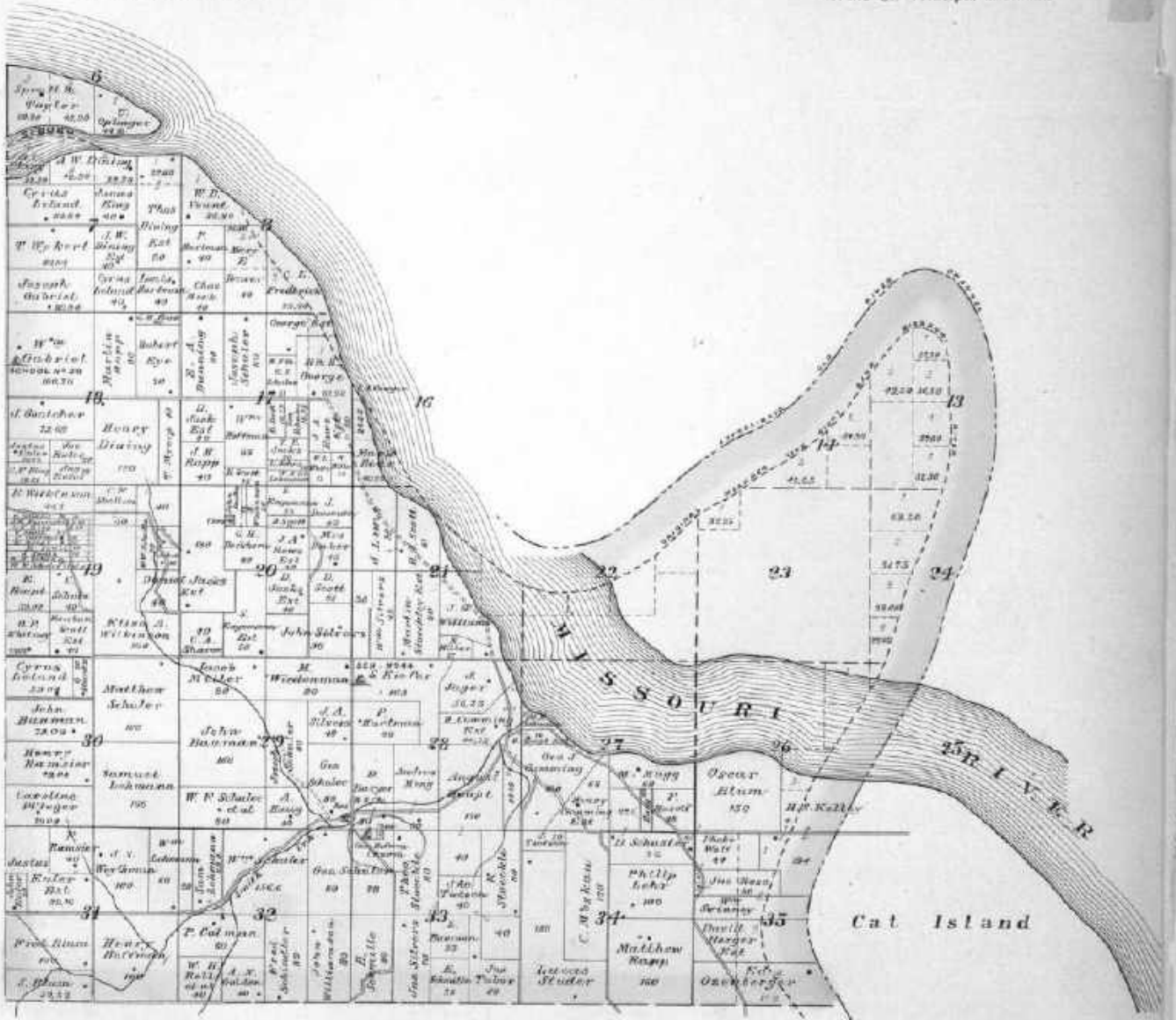
of the 6th Principal Meridian.



# TOWNSHIP 2 SOUTH RANGE 22 EAST

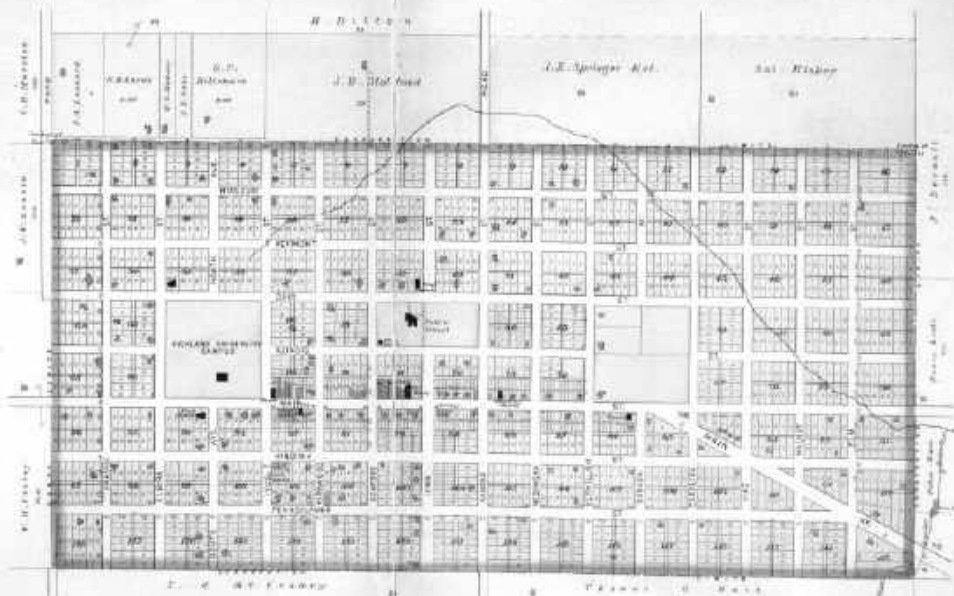
Scale 2 Inches to the Mile

of the 6th Principal Meridian.



# HIGHLAND

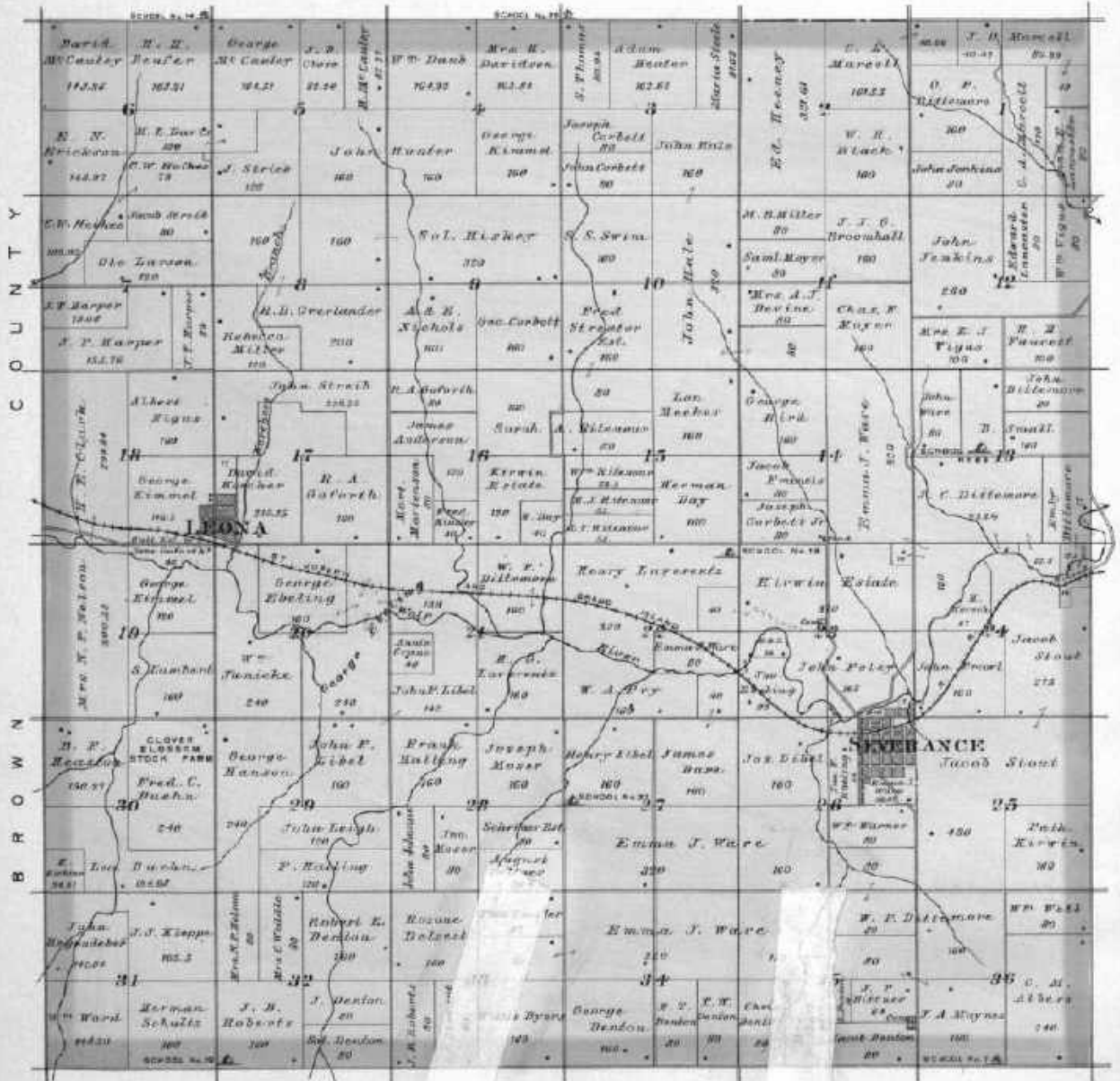
LOCATED IN IOWA TWP  
NEAR 1875 to 1880



# TOWNSHIP 3 SOUTH RANGE 19 EAST

Scale 2 Inches to the Mile

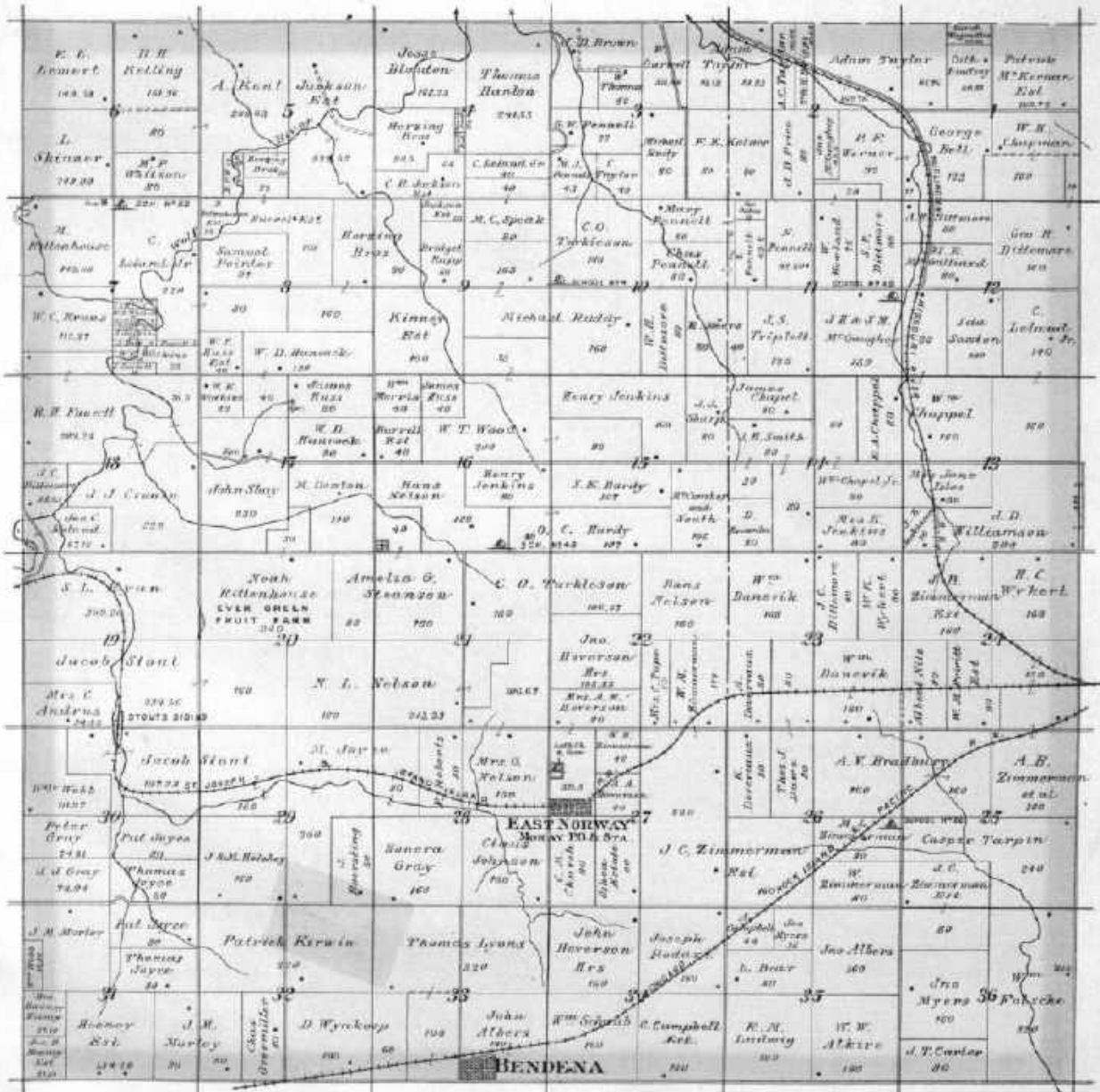
of the 6th Principal Meridian.



# TOWNSHIP 3 SOUTH RANGE 20 EAST

Scale 2 inches to the Mile.

of the 6th Principal Meridian



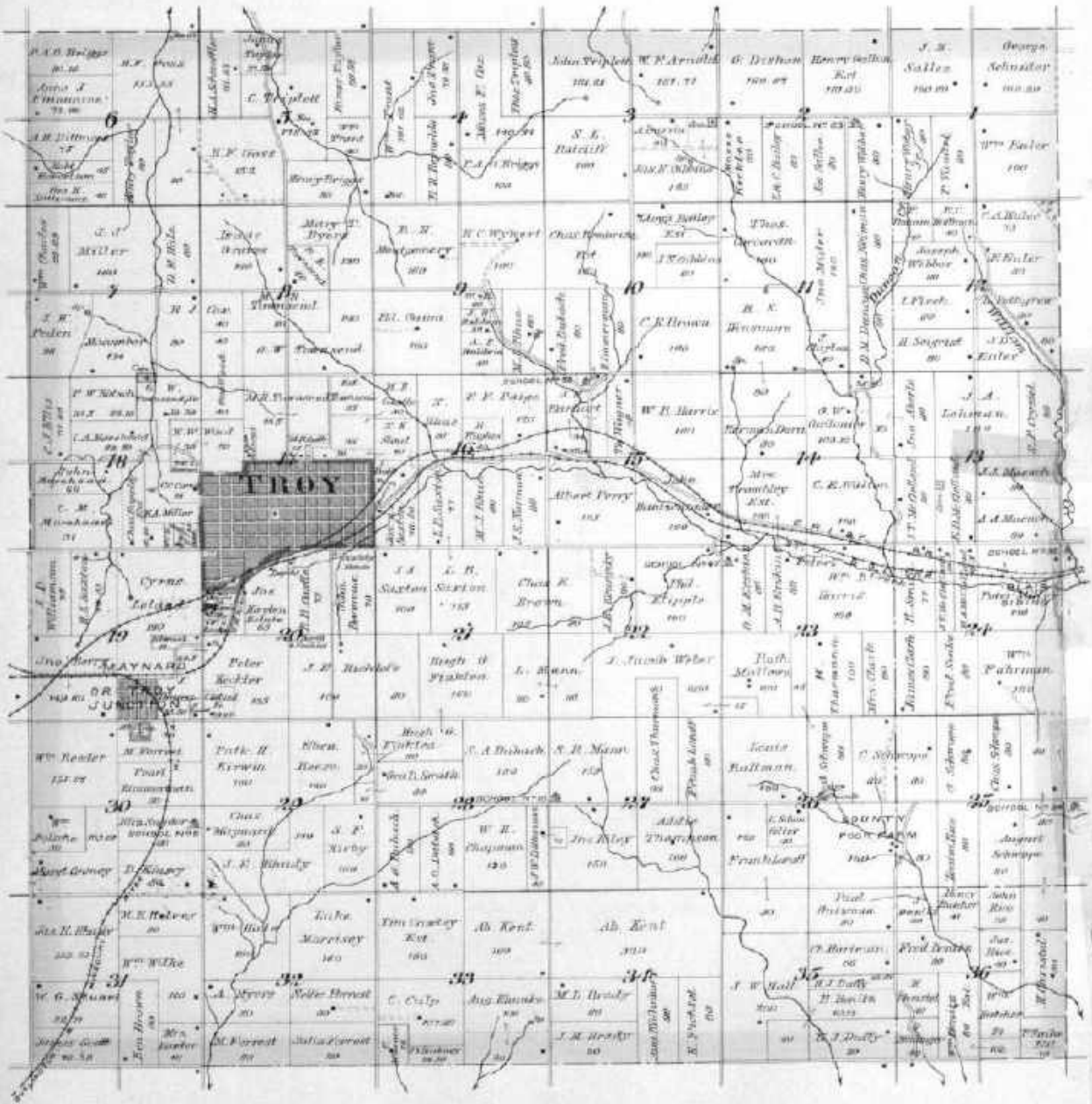
**TROY**  
 City of Rensselaer Co.  
 N.Y.



# TOWNSHIP 3 SOUTH RANGE 21 EAST

Scale 2 Inches to the Mile

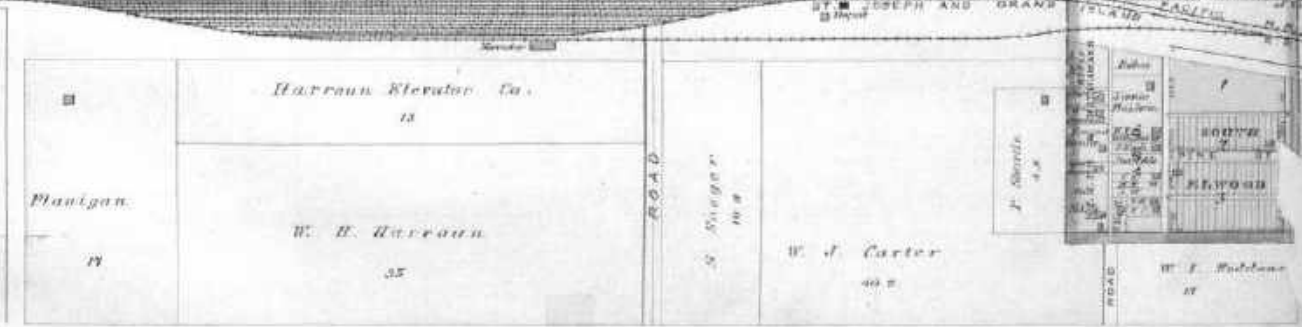
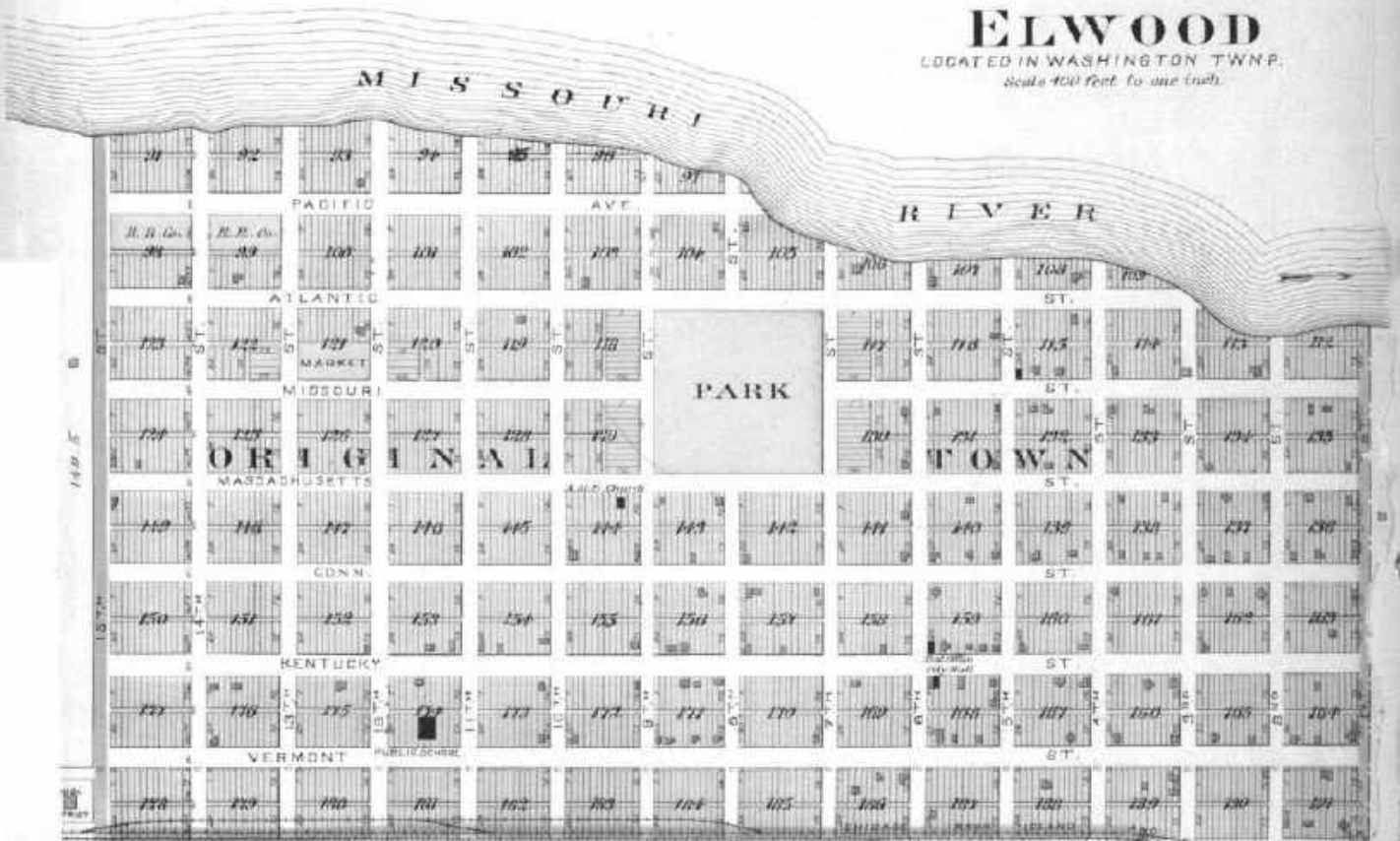
of the 9th Principal Meridian





# ELWOOD

LOCATED IN WASHINGTON TWP.  
Scale 400 feet to one inch.



### EAST NORWAY MORAY P.O. STA.

Scale 200 Ft. to 1 Inch.



### BENDENA FORMERLY ALBERS

Scale 200 Ft. to 1 Inch.



### LEONA

Scale 200 Ft. to 1 Inch.



# SEVERANCE

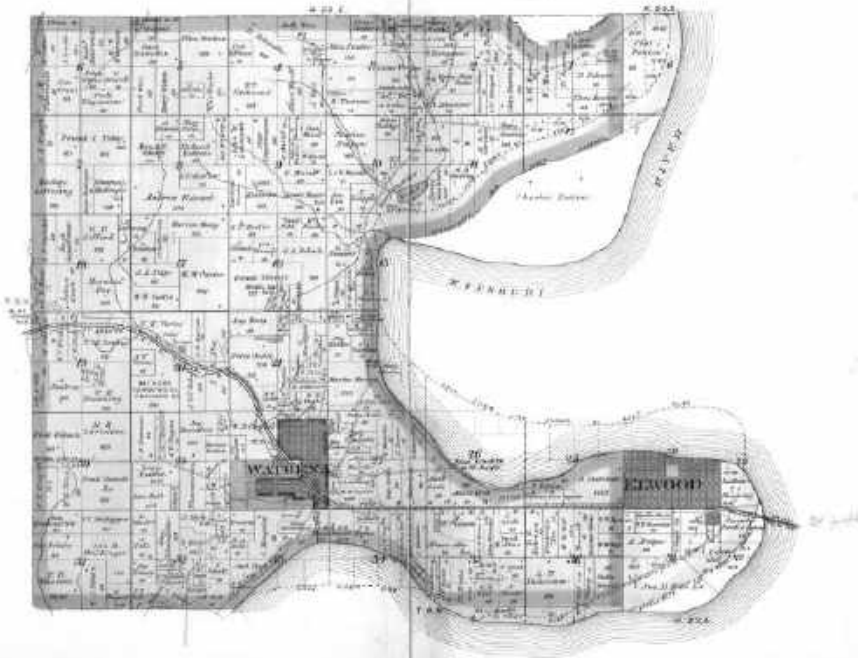
Scale - 300 Ft. to 1 Inch.



TOWNSHIP 3 SOUTH RANGES 22&23 EAST

Scale 7 inches to the Mile

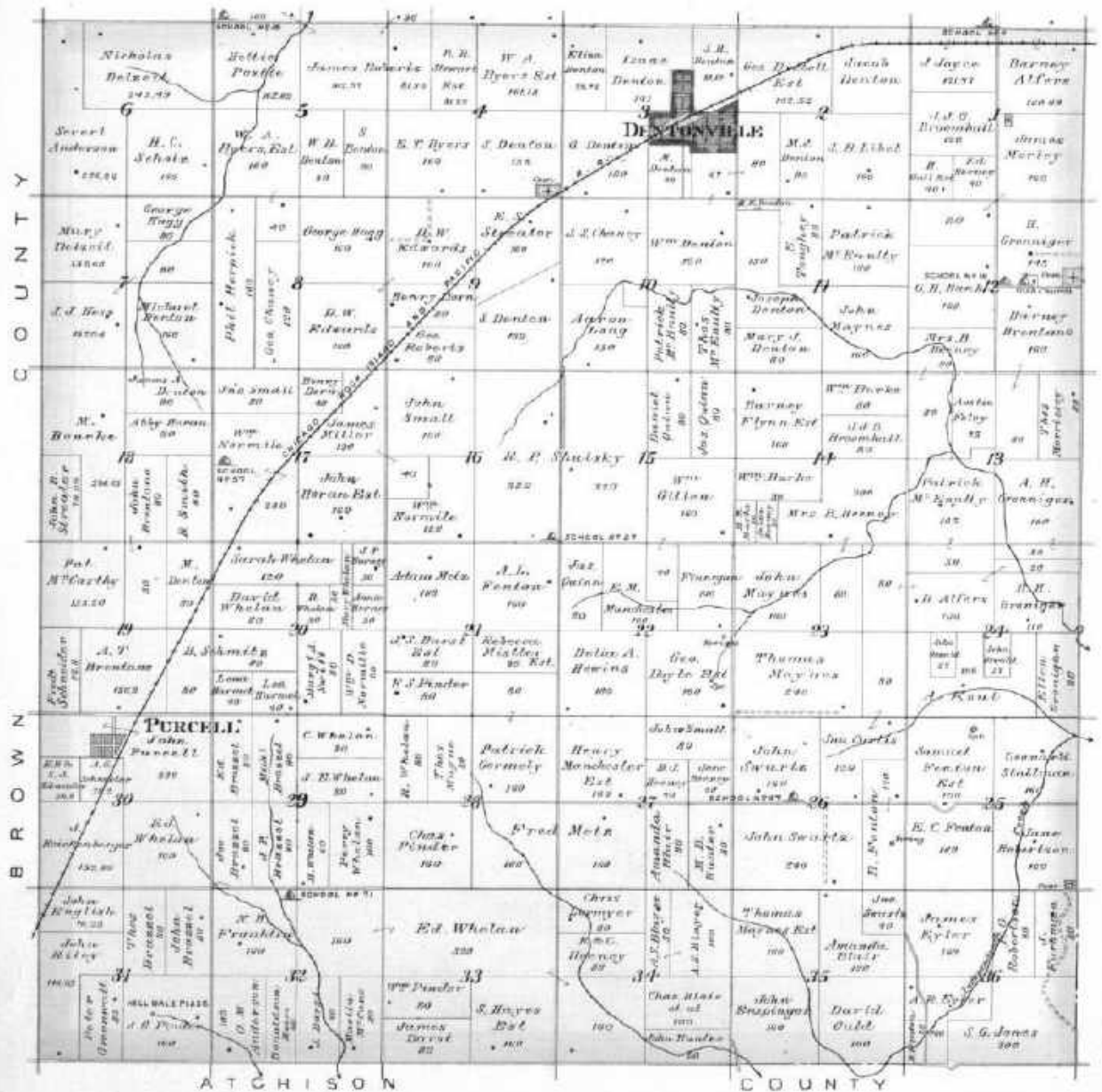
of the 1<sup>st</sup> Principal Meridian



# TOWNSHIP 4 SOUTH RANGE 19 EAST

Scale 2 Inches to the Mile

of the 6th Principal Meridian.



# PURCELL

LOCATED IN UNION TWP.  
Sec. 26, 30074 to 31000.

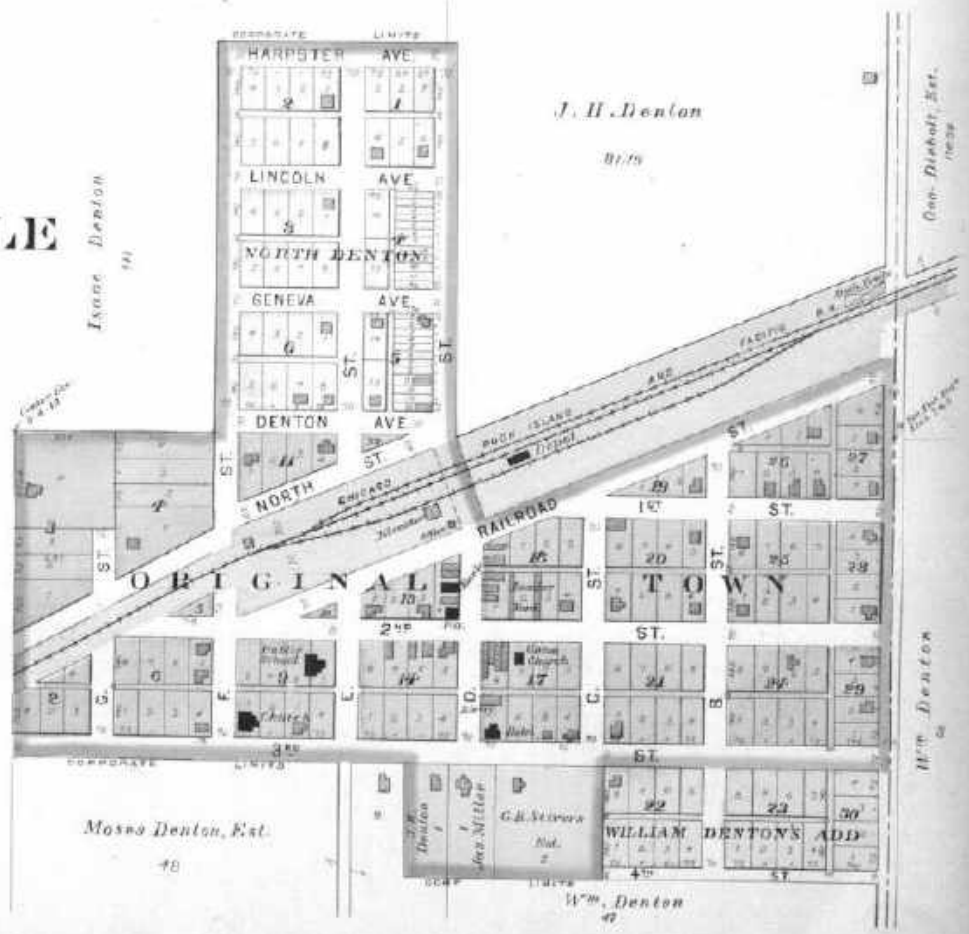
A. T. Becklund



John Purcell

# DENTONVILLE

Platted as DENTON  
UNION TWP.  
Scale 500 Feet to one inch.



J. H. Denton

Isaac Denton

Mosno Denton, Est.

Wm. Denton

Gen. Denton, Est.

Wm. Denton

WILLIAM DENTON'S ADD.

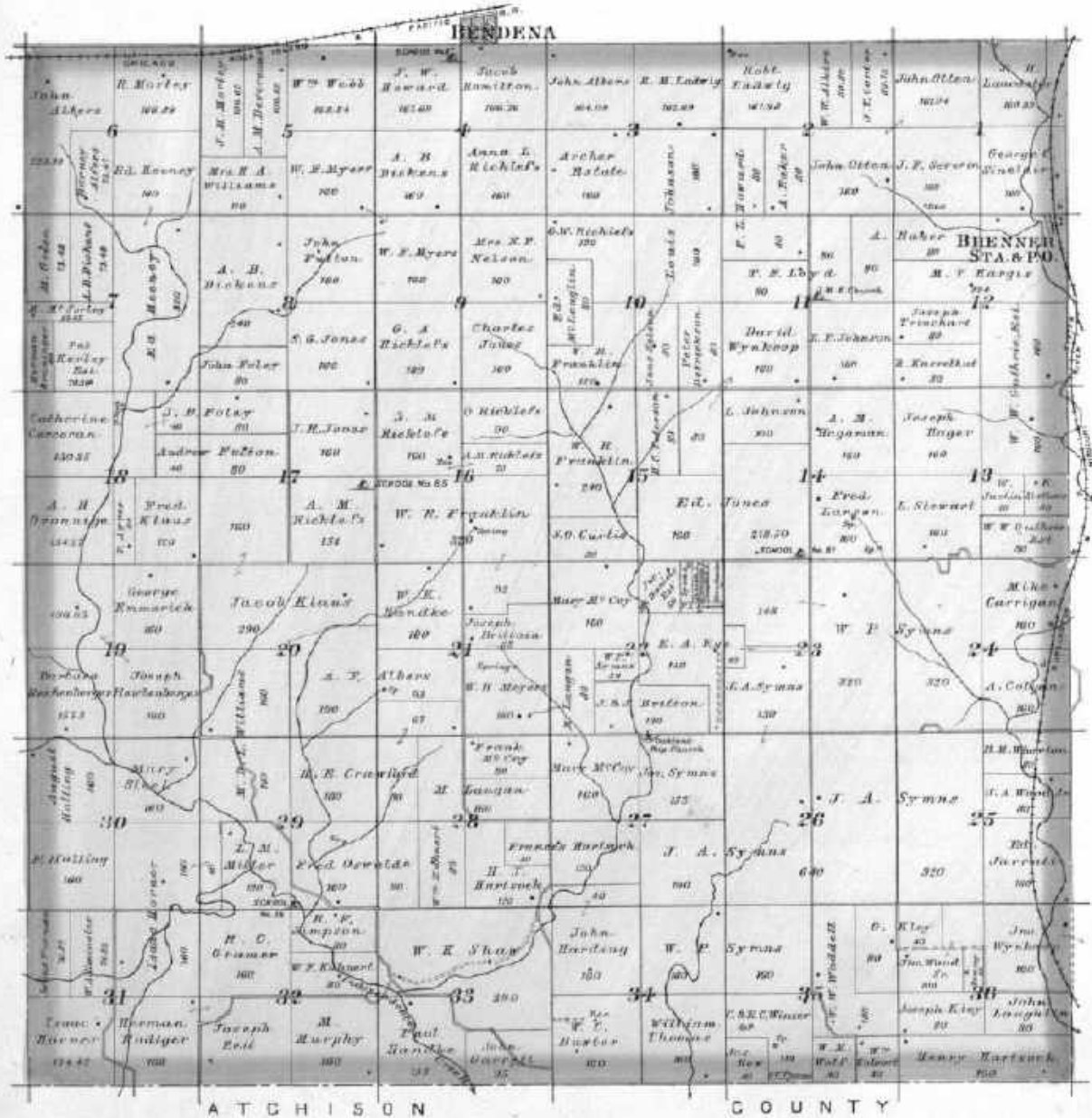
**WATHENA**  
LOCATED IN WASHINGTON TERRITORY  
March 26th 1849 at the Falls



# TOWNSHIP 4 SOUTH RANGE 20 EAST.

Scale 2 Inches to the Mile

of the 6th Principal Meridian.

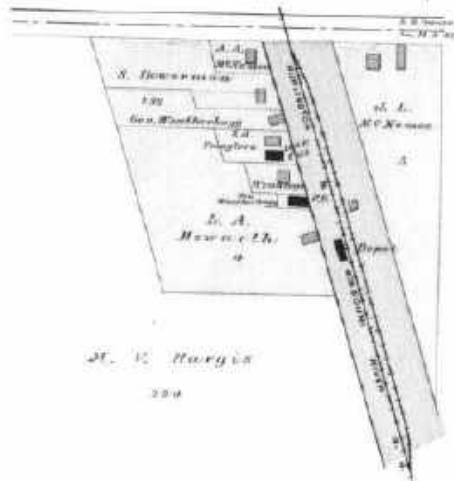




CANADA STATE  
HISTORICAL SOCIETY

### BRENNER POST OFFICE & STATION

LOCATED IN WAYNETOWN  
about 2011 to see York



M. C. Korman  
200

# TOWNSHIPS 4&5 SOUTH RANGE 21 EAST.

Scale 2 inches to the Mile

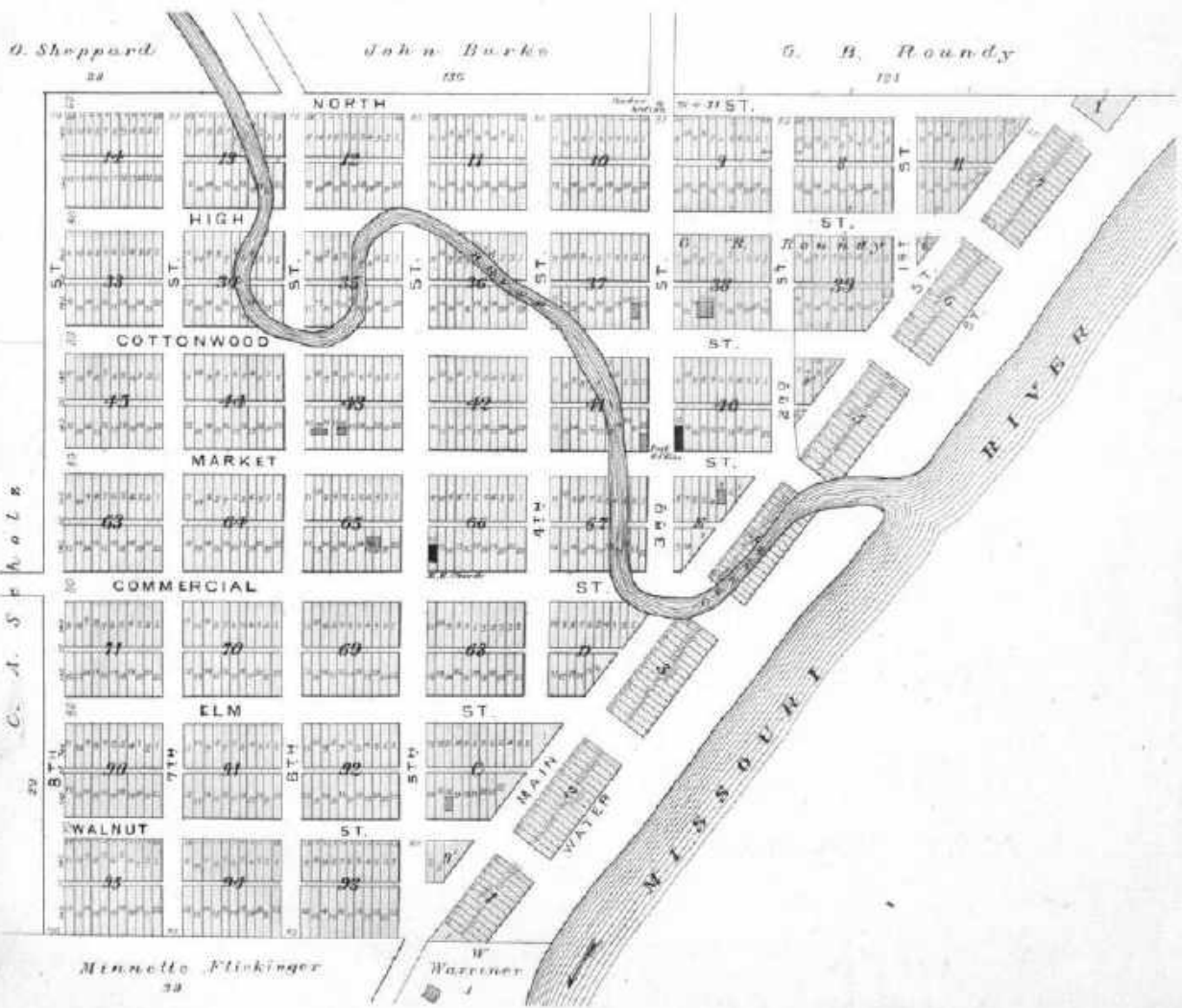
of the 6th Principal Meridian

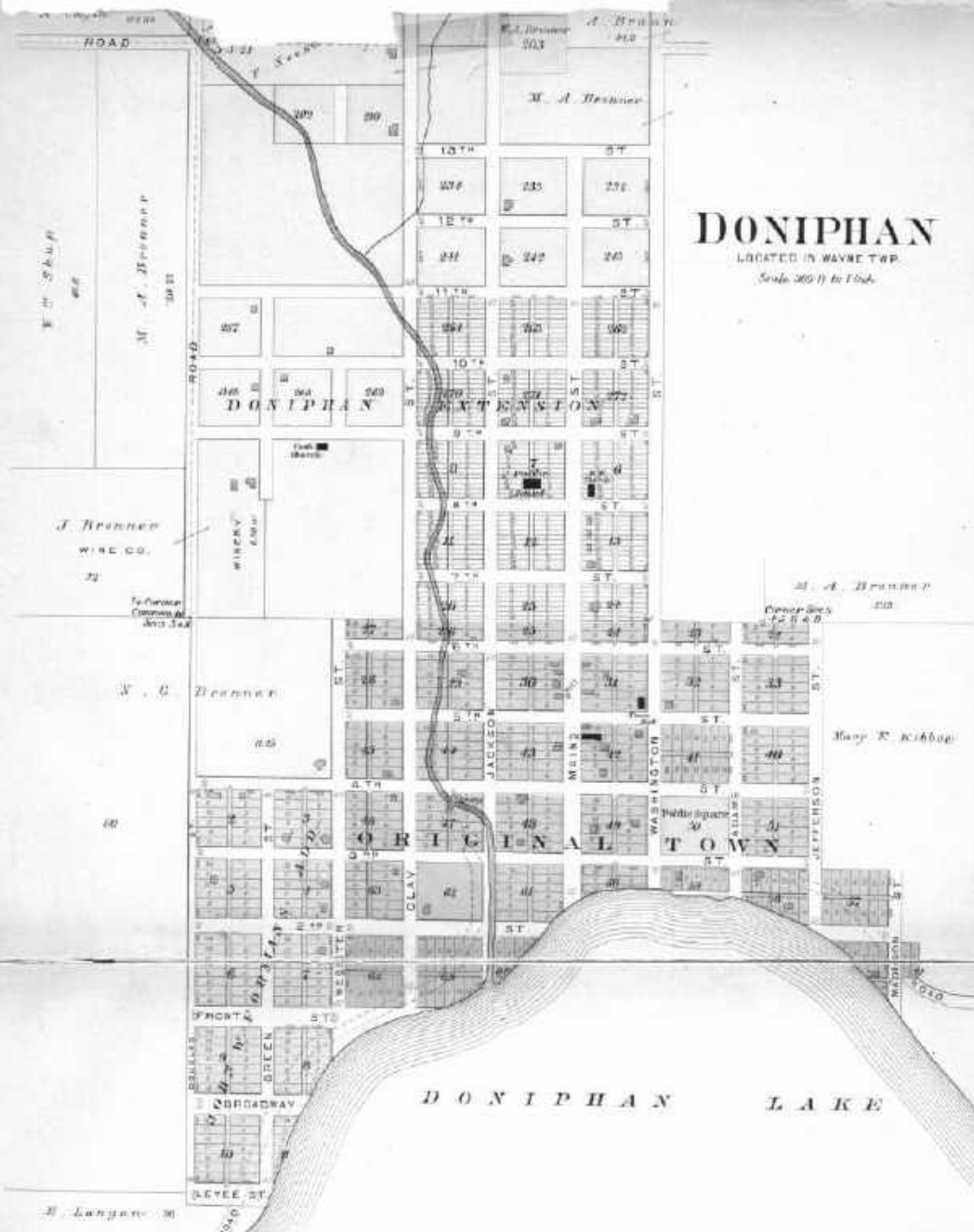


# GEARY CITY

LOCATED IN WAYNE TWP.

Scale 300 Ft. to 1 Inch





**DONIPHAN**  
 LOCATED IN WAYNE TWP.  
 Scale 300 ft to 1 inch.

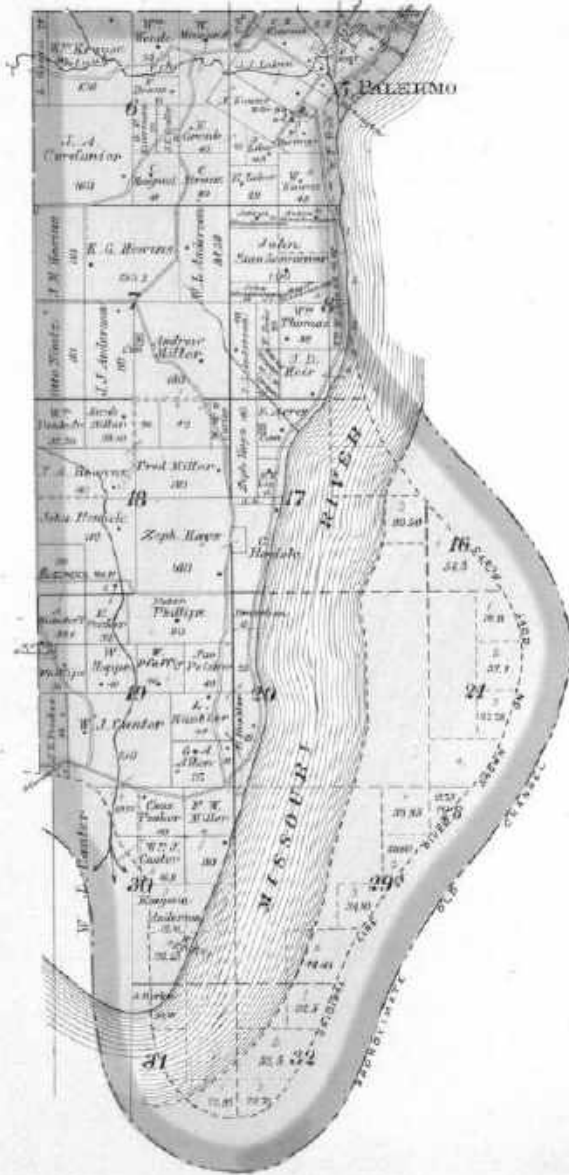
**TROY JUNCTION**  
 PLATTED AS MAYNARD  
 MADE IN 1871 BY J. C. BROWN



# TOWNSHIP 4 SOUTH RANGE 22 EAST

Scale 2 Inches to the Mile.

of the 6<sup>th</sup> Principal Meridian.



ROAD

# PALESMO

LOCATED IN MARION TWP.  
Scale 100 Ft. to Inch

37

