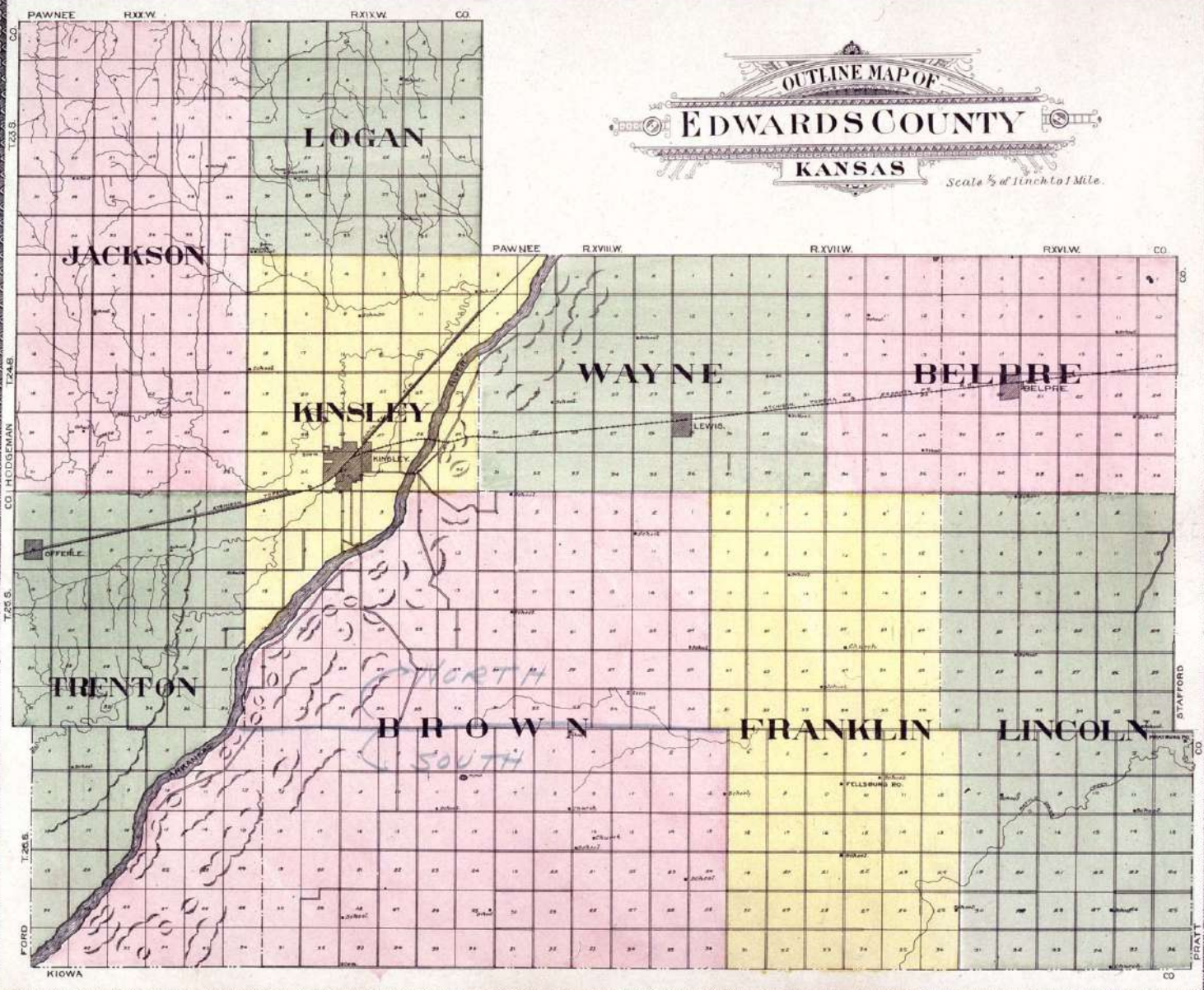


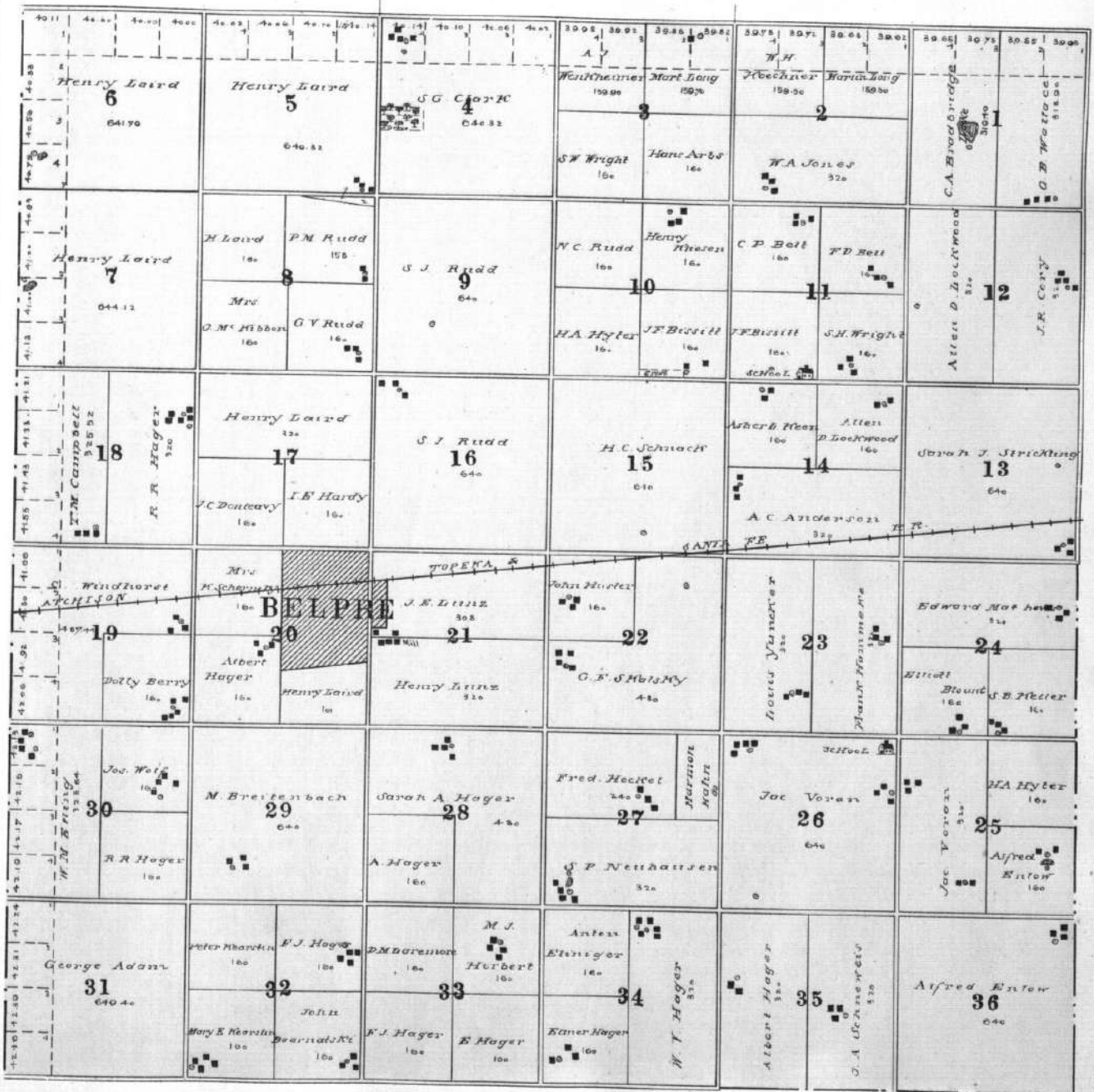
OUTLINE MAP OF  
**EDWARDS COUNTY**  
 KANSAS  
 Scale  $\frac{1}{4}$  of inch to 1 Mile.



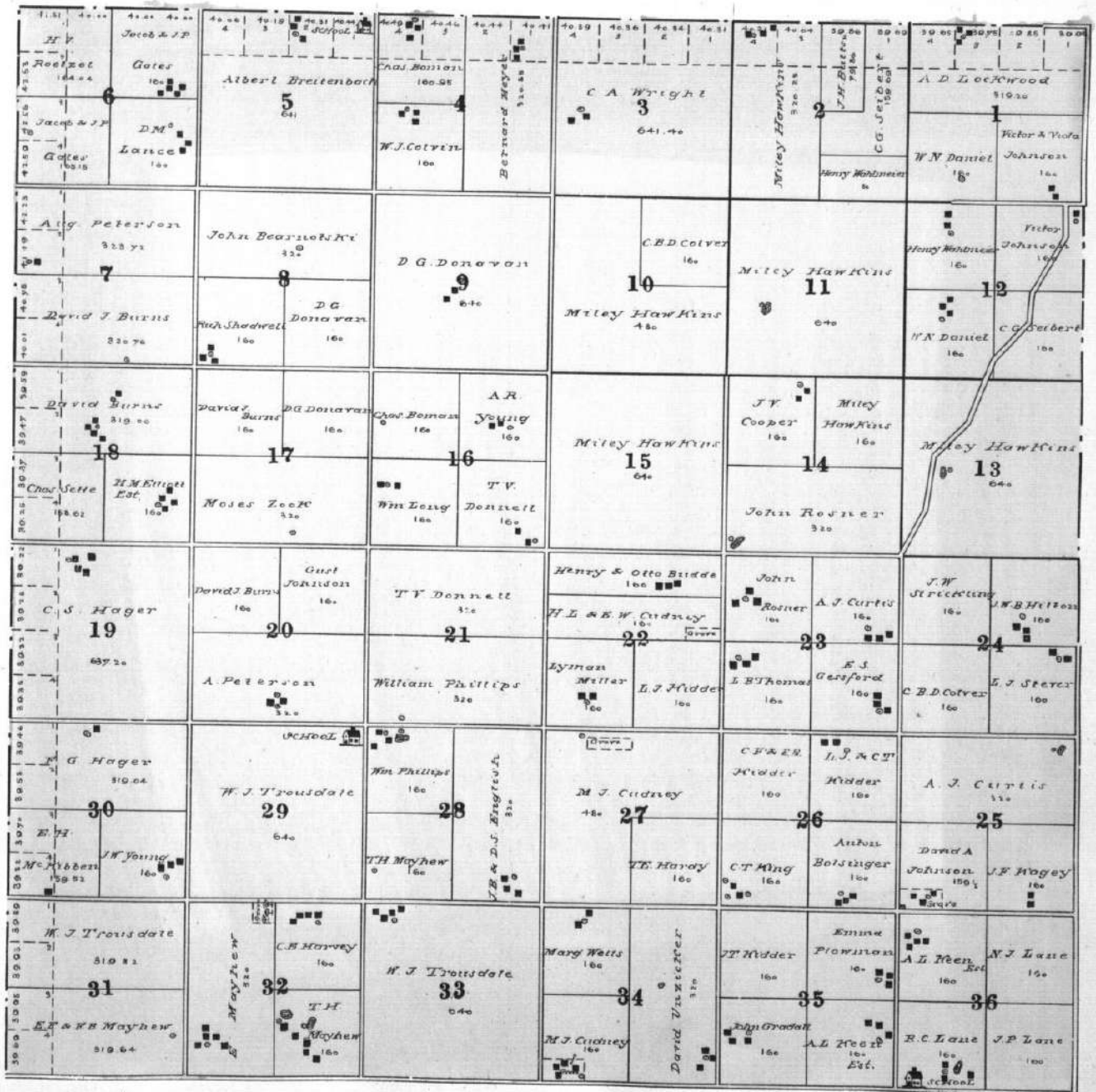




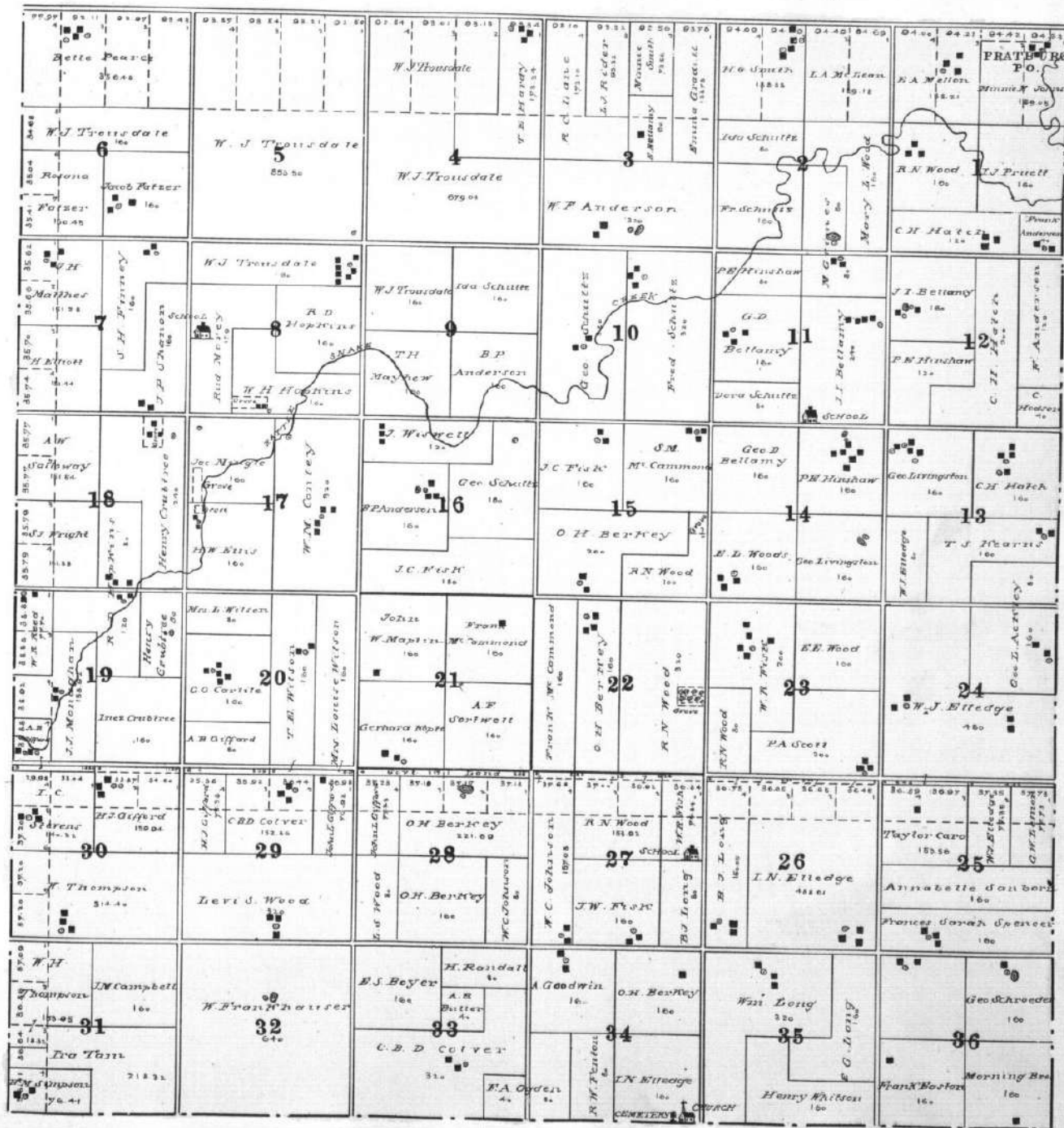

  
**MAP OF**  
**TOWNSHIP 24 S. RANGE XVII.**  
 OF THE 6TH P. M.




  
**MAP OF**  
**TOWNSHIP 25 S. RANGE XVI W.**  
 OF THE 5TH P. M.

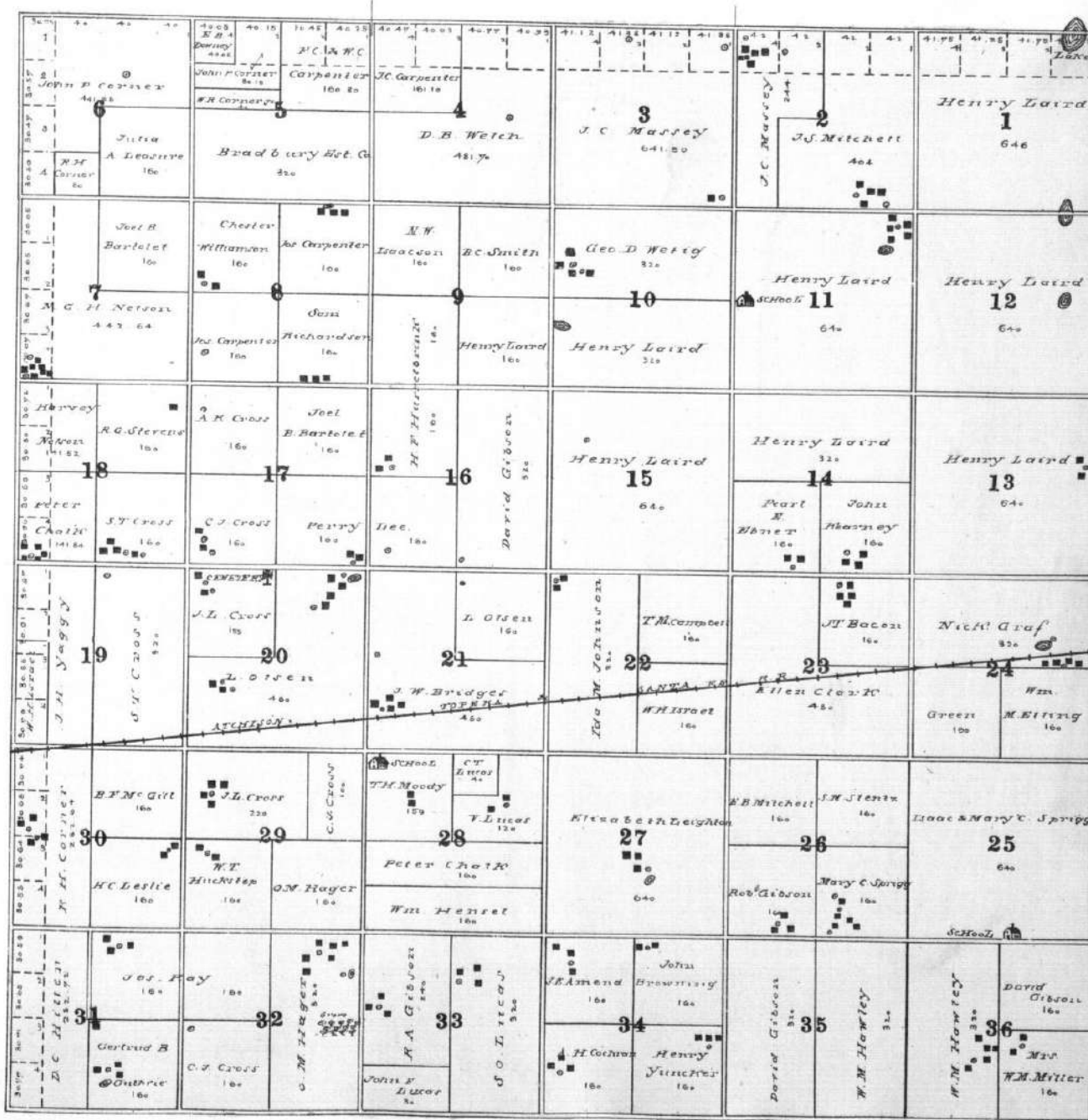



  
**MAP OF**  
**TOWNSHIP 26 S. RANGE XVII W.**  
 OF THE 6<sup>TH</sup> P. M.





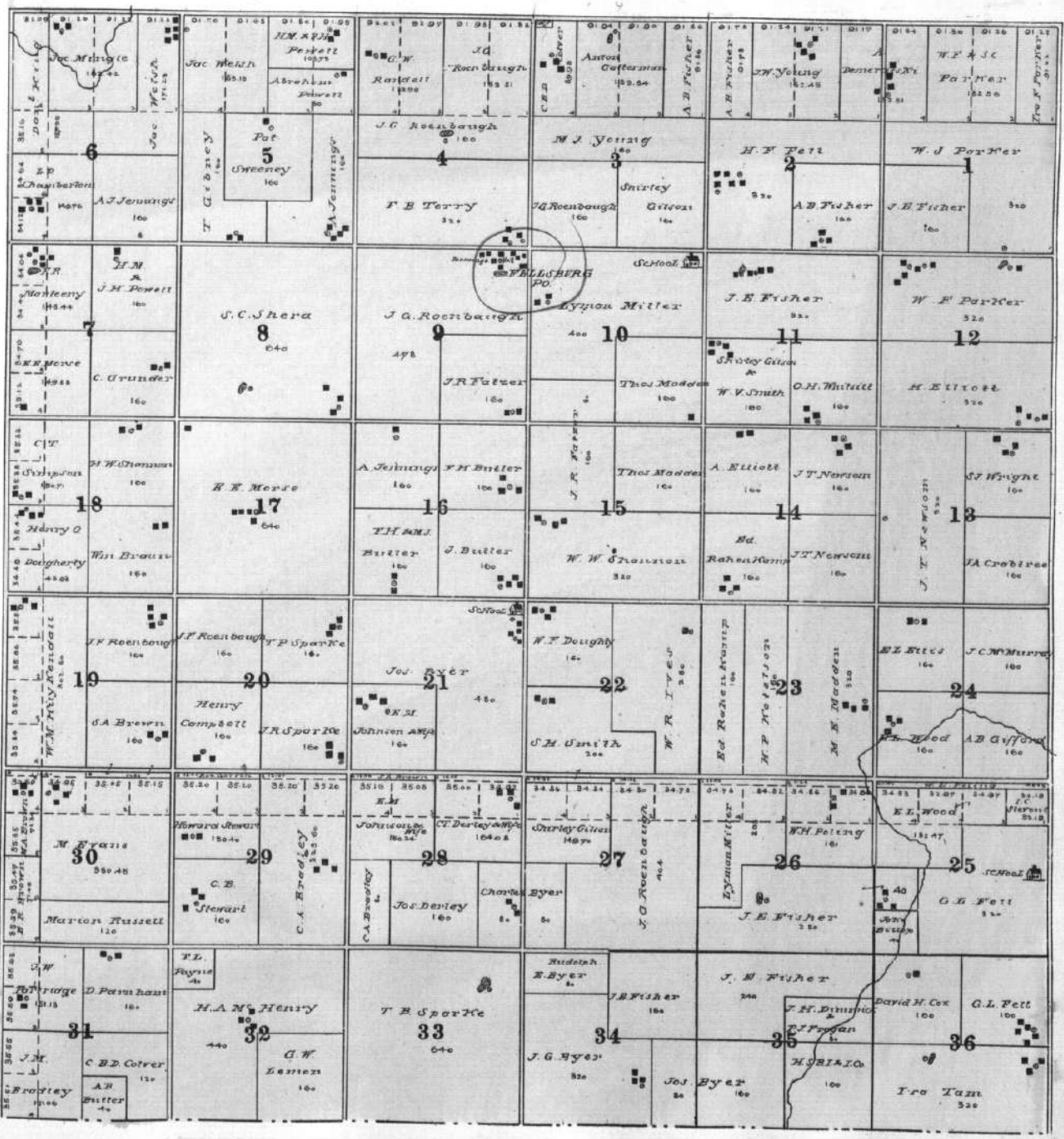
**MAP OF**  
**TOWNSHIP 24 S. RANGE XVII W.**  
 OF THE 6TH P. M.




**MAP OF**  
**TOWNSHIP 25 S. RANGE XVII W.**  
 OF THE 6TH P. M.

<p>3129 16  <i>Nettie Cross</i>  <i>R. H. Corlies</i> 50  <i>G. H. Rowland</i> 50</p> <p>6</p>	<p>72 40  <i>Beal Couvert</i> 100 20  <i>J. M. Duggar</i> 100  <i>A. M. Ray</i> 300 10</p> <p>5</p>	<p>1025 40 15  <i>A. A. Ray</i> 100 05  <i>J. M. Bowler</i> 100 50  <i>Theo Browning</i> 100 10  <i>Theo Browning</i> 100</p> <p>4</p>	<p>10 11 40 44 40 00 50 00  <i>Levi S. Smith</i>      640</p> <p>3</p>	<p>0005 30 50 30 00 00 00  <i>W. M. Hawley</i> 15 40  <i>Jac Meier</i> 30 20</p> <p>2</p>	<p>50 00 10 00 20 00 50 00  <i>J. J. Meier</i> 150 10  <i>A. Peterson</i> 400 10</p> <p>1</p>
<p>50 20 10 20  <i>A. J. Charley</i> 100 20  <i>A. J. Newton</i> 200 20</p> <p>7</p>	<p>100 20  <i>W. S. Sampson</i> 100  <i>T. B. Hoffman</i> 100  <i>H. Craft</i> 100</p> <p>8</p>	<p>0 0 10  <i>O. V. Ray</i> 0 10</p> <p>9</p>	<p>100 10  <i>Barney Muchlins</i> 100  <i>Mary A. Jarr</i> 100</p> <p>10</p>	<p>100 10  <i>W. C. Ray</i> 100  <i>R. E. Lissel</i> 100</p> <p>11</p>	<p>100 10  <i>A. Peterson</i> 100  <i>Henry Bester</i> 100</p> <p>12</p>
<p>3125 30 40  <i>A. J. Newton</i> 100  <i>Deft Gessel</i> 100 20</p> <p>18</p>	<p>100 30  <i>A. V. Witherspoon</i> 300  <i>J. T. Duggar</i> 100  <i>J. T. Duggar</i> 100</p> <p>17</p>	<p>100 50  <i>SCHOOL</i>  <i>Roy Adson</i> 500  <i>C. M. Davis</i> 500</p> <p>16</p>	<p>100 10  <i>Jac Ray</i> 100  <i>R. E. Lissel</i> 100</p> <p>15</p>	<p>100 10  <i>Porter Ray</i> 100  <i>Barney Muchlins</i> 100  <i>Josef Meier</i> 900</p> <p>14</p>	<p>100 10  <i>Chas. Jetter</i> 0 10</p> <p>13</p>
<p>30 00 10 00  <i>A. V. Witherspoon</i> 600 20</p> <p>19</p>	<p>100 10  <i>J. T. Duggar</i> 100  <i>J. T. Duggar</i> 100</p> <p>20</p>	<p>100 30  <i>John M. Corley</i> 300  <i>Elisha Terry</i> 100</p> <p>21</p>	<p>100 10  <i>J. M. Corley</i> 100  <i>R. M. Corley</i> 100</p> <p>22</p>	<p>100 10  <i>John Barney</i> 100  <i>J. F. Reader</i> 100</p> <p>23</p>	<p>100 10  <i>A. Peterson</i> 100  <i>M. T. Ingraham</i> 100  <i>J. J. Weese</i> 100</p> <p>24</p>
<p>100 30  <i>G. H. Suttis</i> 100 30  <i>W. P. Heston</i> 100</p> <p>30</p>	<p>100 10  <i>J. T. Wallis</i> 100  <i>John A. Arty</i> 100  <i>B. Ganney</i> 100</p> <p>29</p>	<p>100 10  <i>John M. Corley</i> 100  <i>John M. Corley</i> 100  <i>John M. Corley</i> 100</p> <p>28</p>	<p>100 10  <i>J. H. M. Corley</i> 100  <i>McVittie</i> 100</p> <p>27</p>	<p>100 10  <i>J. A. Vengstad</i> 100  <i>Daniel Weese</i> 500</p> <p>26</p>	<p>100 10  <i>D. F. Weese</i> 100  <i>M. T. Ingraham</i> 100  <i>C. Ingraham</i> 100</p> <p>25</p>
<p>100 30  <i>W. P. Heston</i> 100 30  <i>G. H. Suttis</i> 100 40</p> <p>31</p>	<p>100 10  <i>B. Ganney</i> 100  <i>Bert Whit</i> 100</p> <p>32</p>	<p>100 30  <i>John M. Corley</i> 300  <i>Columbia</i> 100  <i>C. Ingraham</i> 100</p> <p>33</p>	<p>100 30  <i>Anton Gatterman</i> 300  <i>T. P. Heston</i> 100</p> <p>34</p>	<p>100 10  <i>D. J. Harris</i> 100  <i>G. H. Freeman</i> 100</p> <p>35</p>	<p>100 10  <i>D. F. Weese</i> 100  <i>W. N. Pierce</i> 100  <i>J. M. Corley</i> 300</p> <p>36</p>

**MAP OF**  
**TOWNSHIP 26 S. RANGE XVII W.**  
Scale 1 inch to 1 mile  
**OF THE 6TH R. M.**

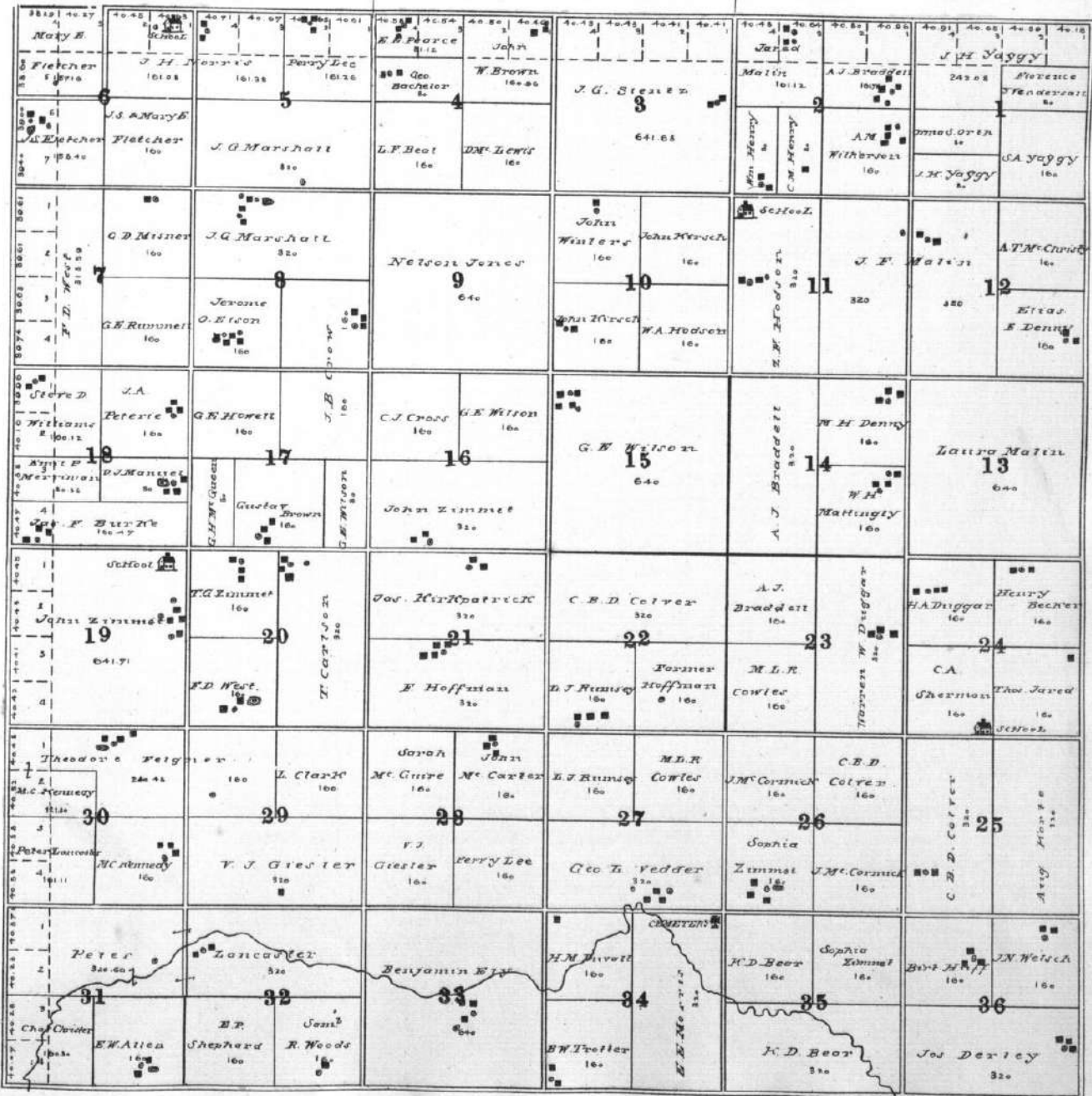





  
**MAP OF**  
**TOWNSHIP 24 S. RANGE XVIII W.**  
 OF THE 6TH P. M.

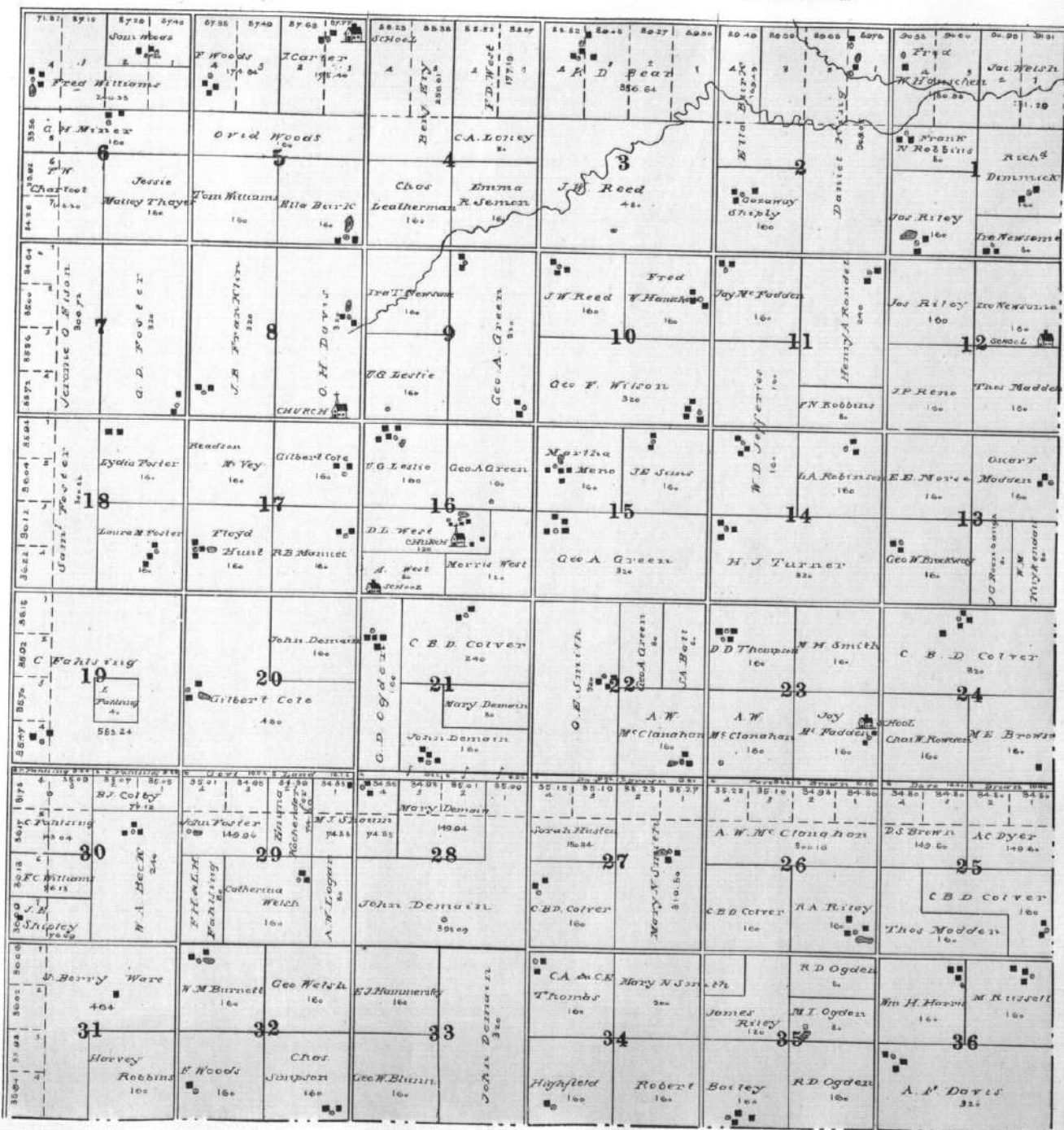



  
**MAP OF**
  
**TOWNSHIP 25 S. RANGE XVIII W.**
  
 OF THE 6TH P. M.





**TOWNSHIP 26 S. RANGE XVIII W.**
  
 OF THE 6TH P. M.



MAP OF  
**TOWNSHIP 23 S. RANGE XIX W.**  
OF THE 6TH P. M.

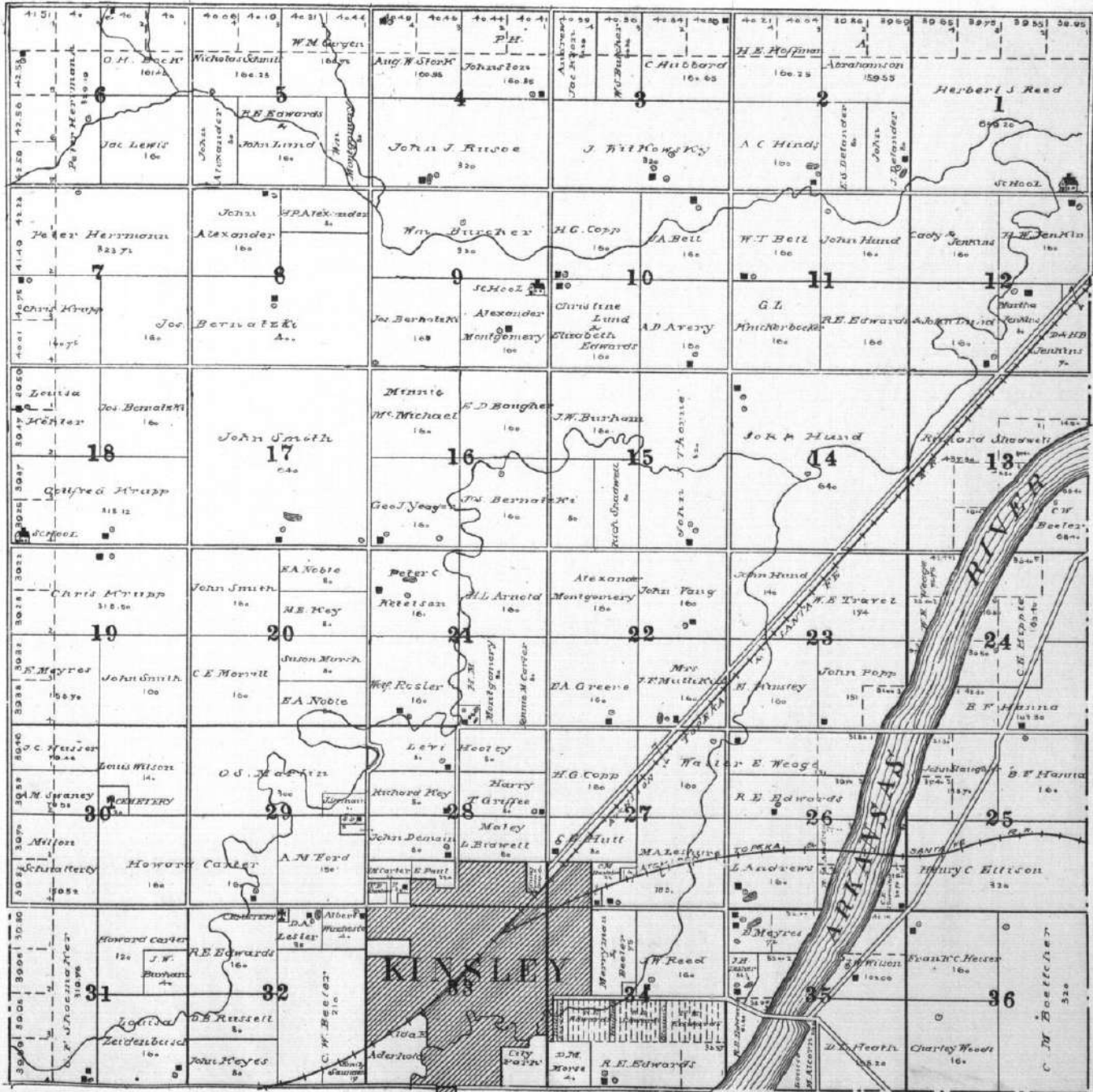
PAWNEE

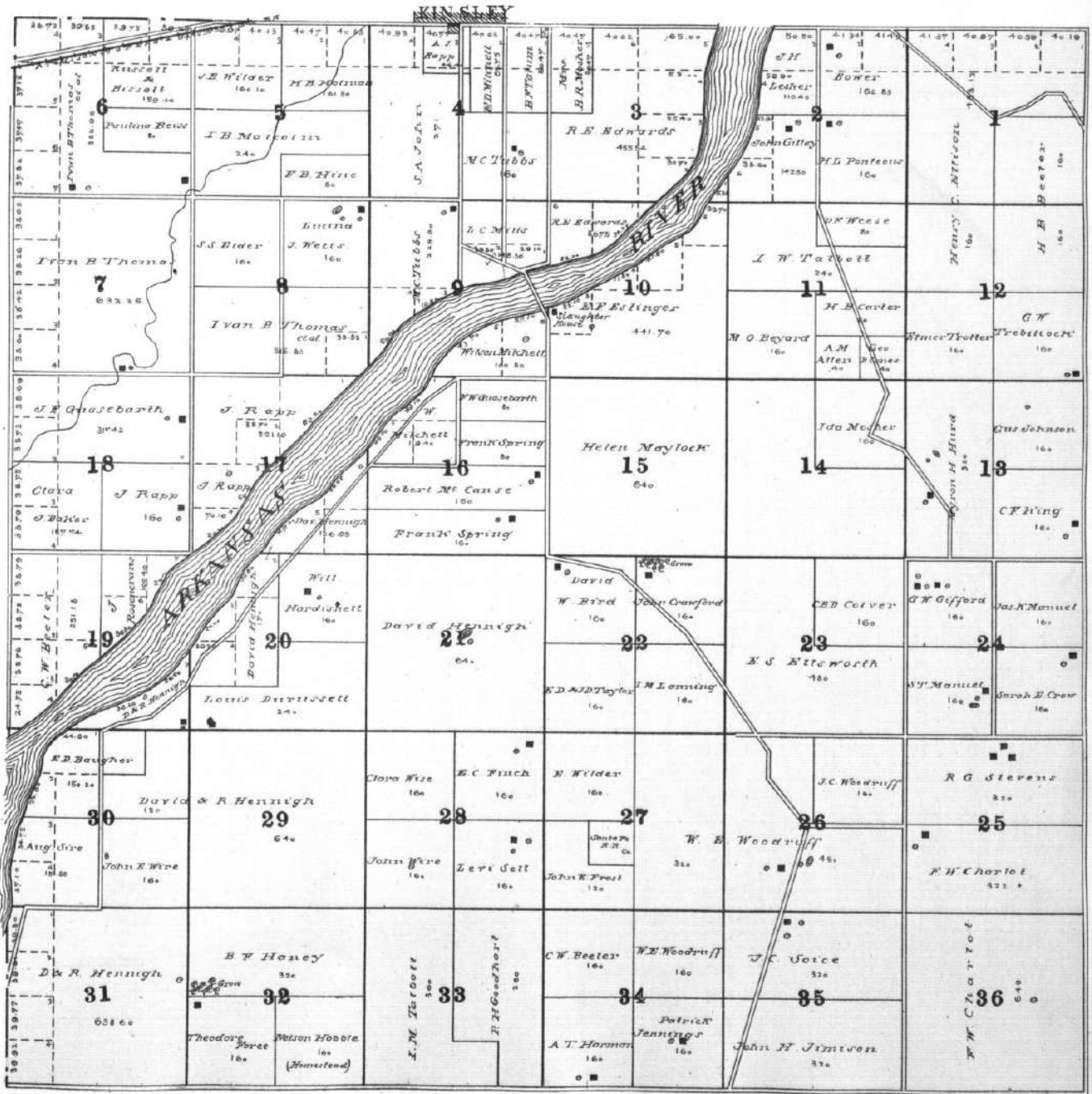
CO.





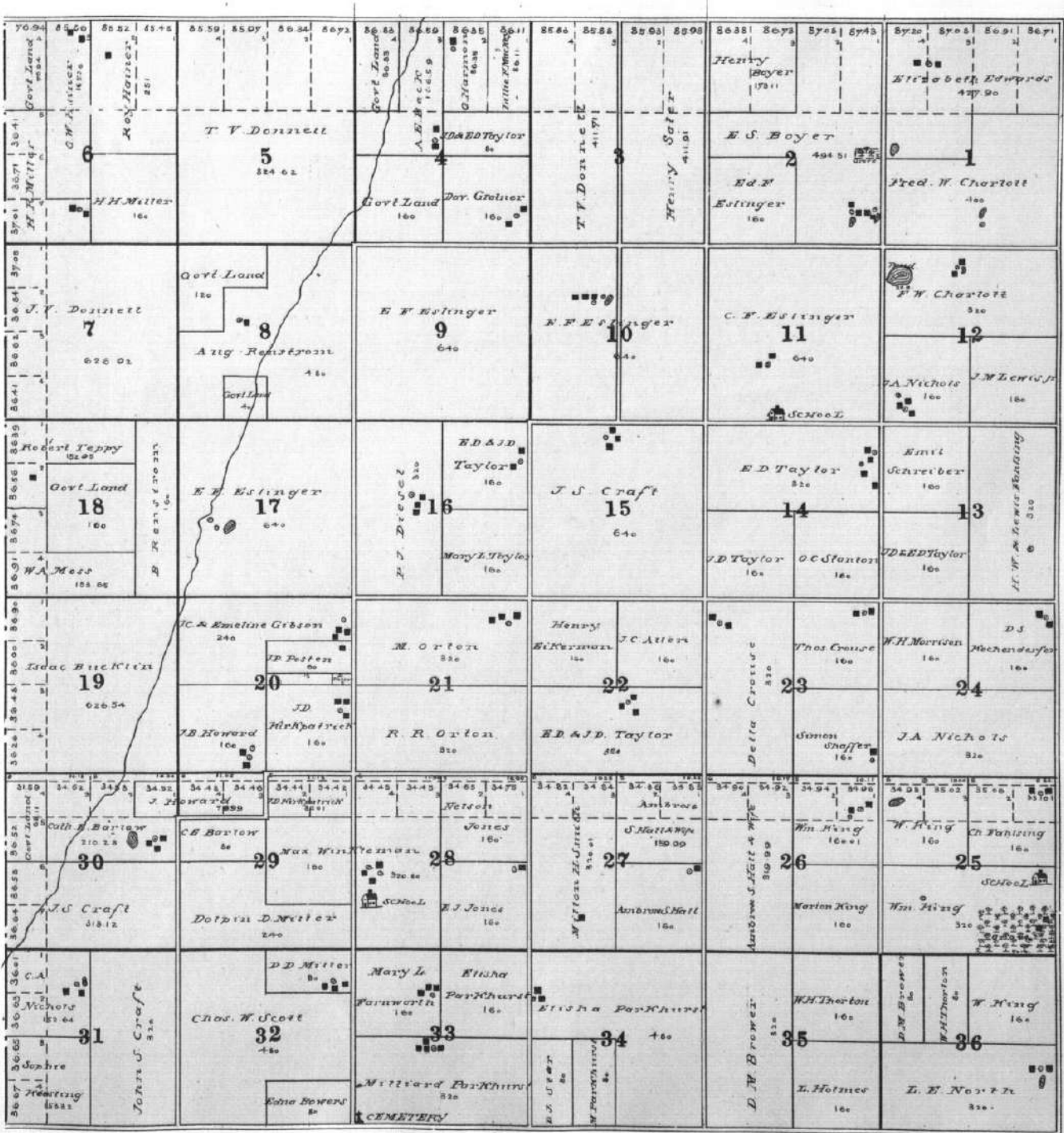

  
**MAP OF**  
**TOWNSHIP 24 S. RANGE XIX W.**  
Under the Act of Congress  
**OF THE 6TH P. M.**



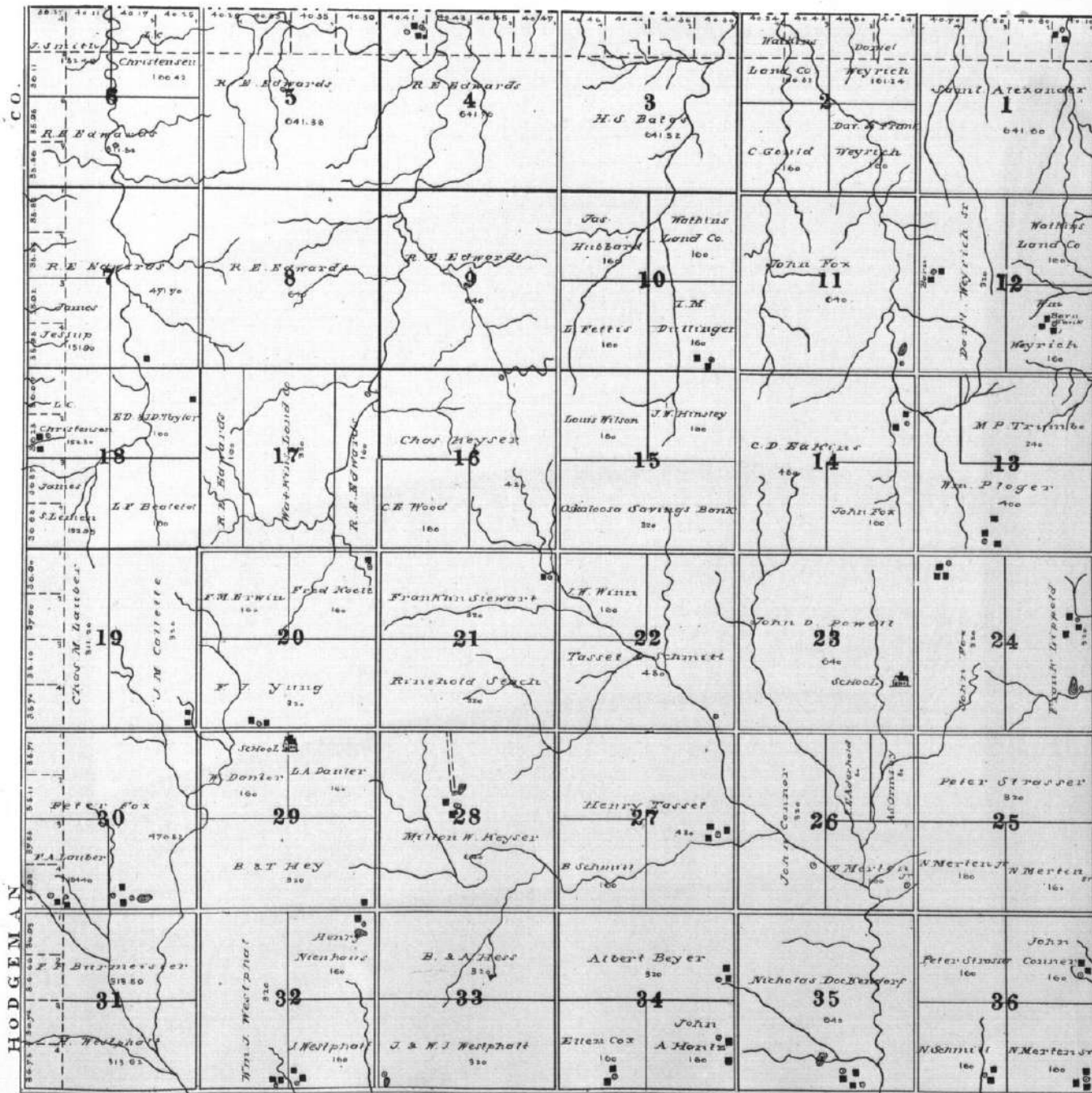





  
**TOWNSHIP 26 S. RANGE XIX W.**
  
 OF THE 6TH M.




  
**TOWNSHIP 235. RANGE XXV.**
  
 OF THE 6TH P. M.

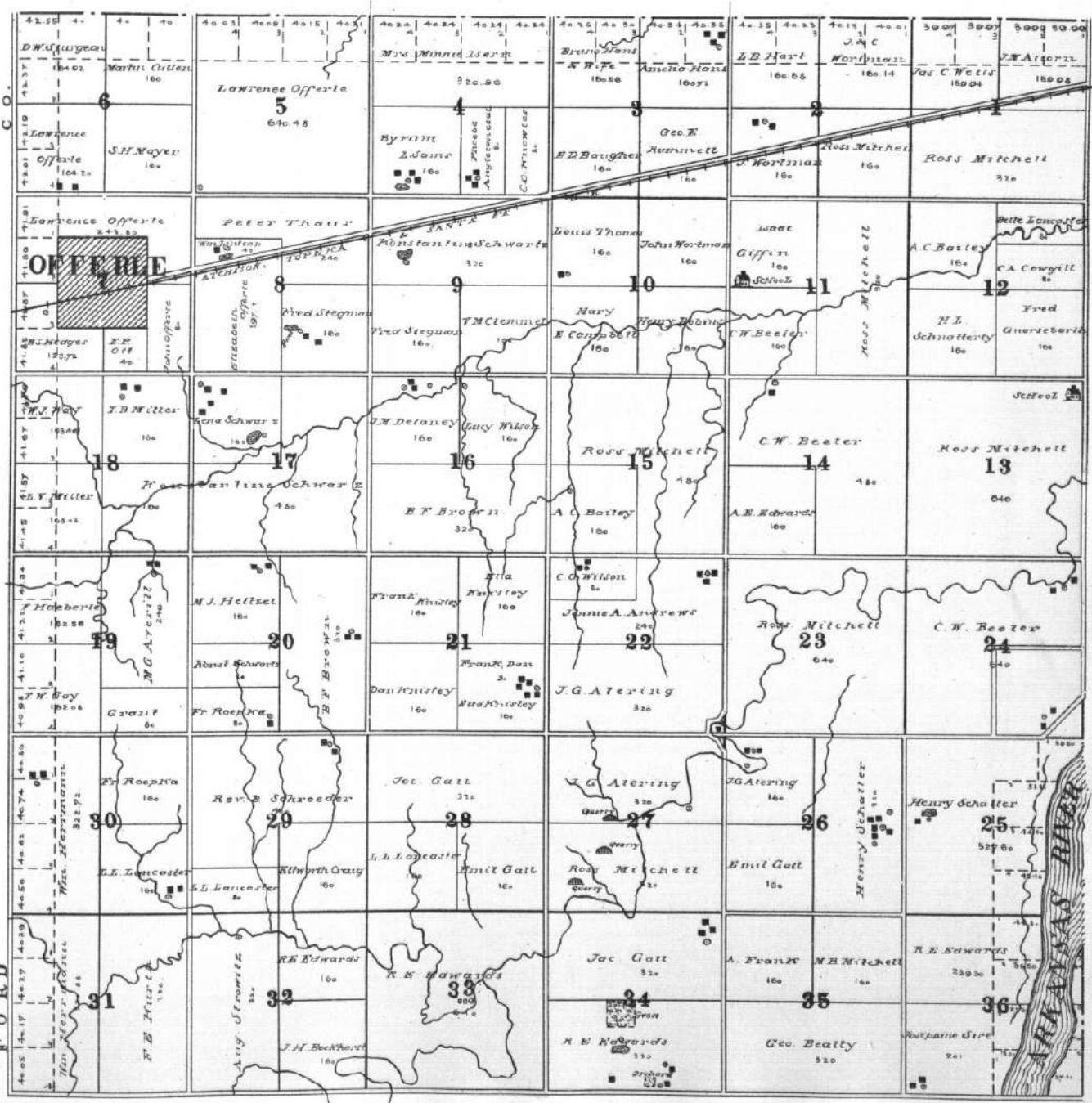




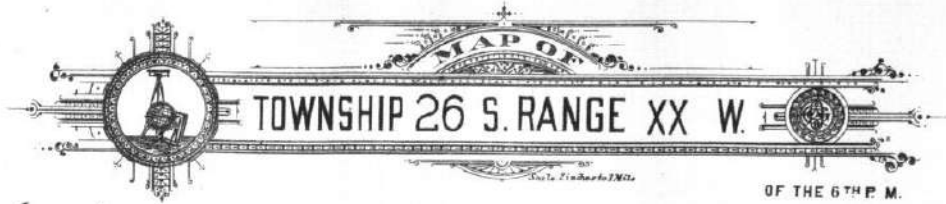

  
**MAP OF**
  
**TOWNSHIP 24 S. RANGE XXW.**
  
 OF THE 6TH P. M.

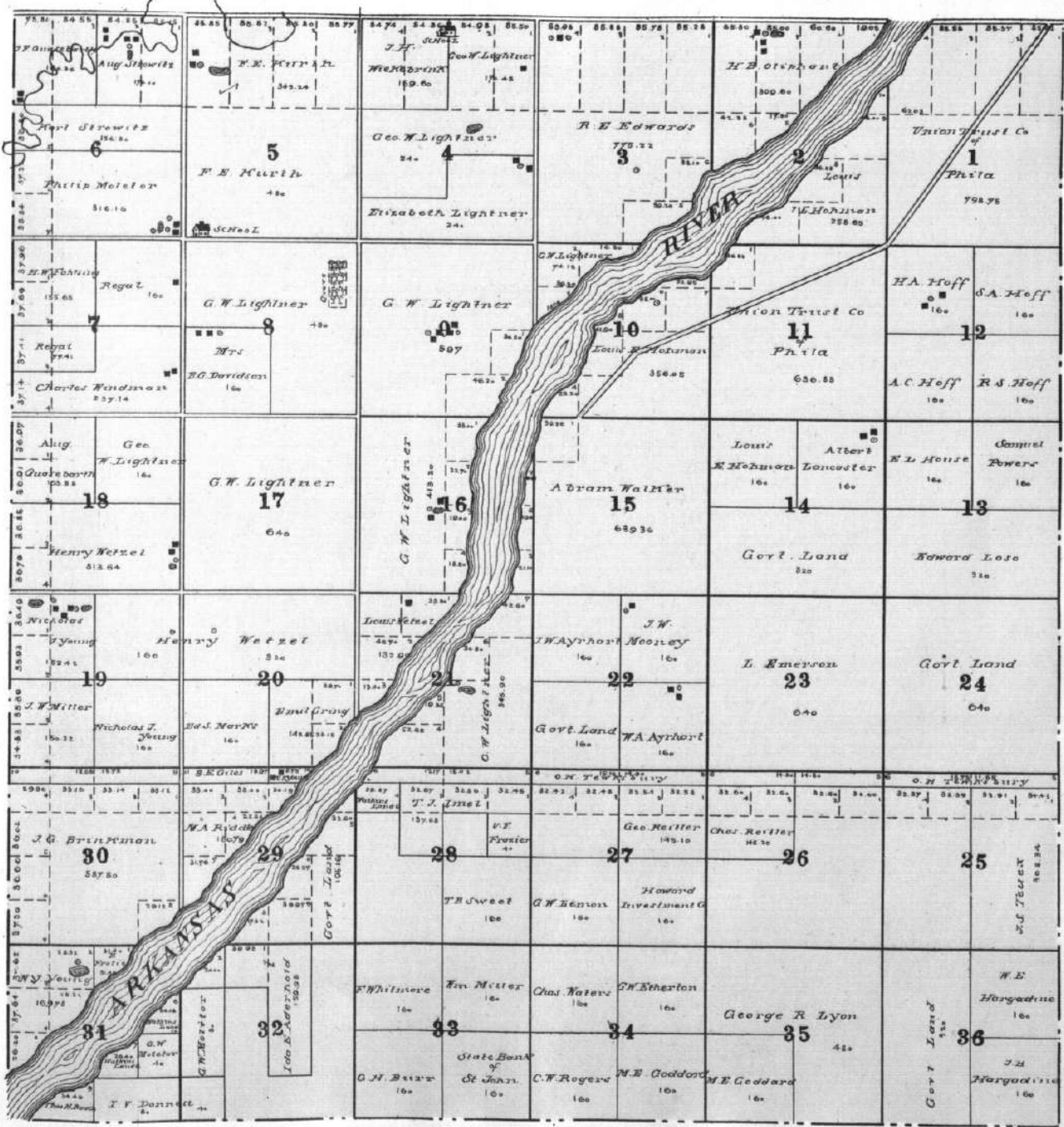


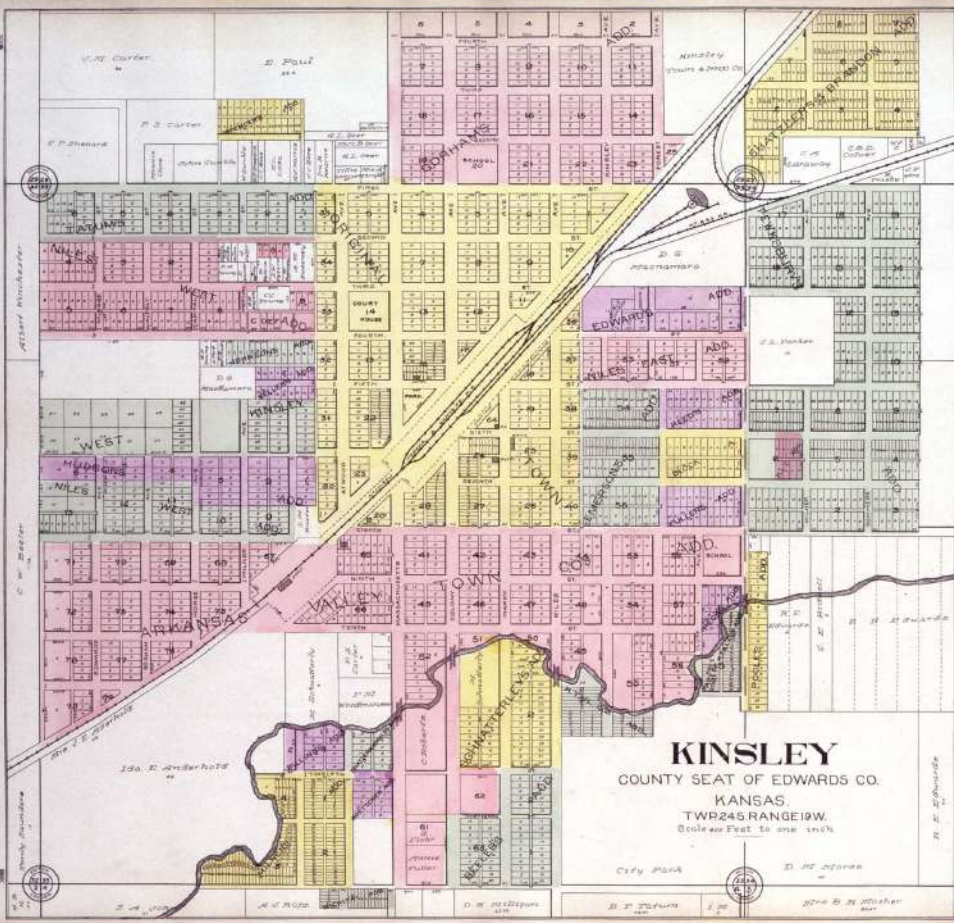

  
**MAP OF**  
**TOWNSHIP 25 S. RANGE XX W.**  
Scale 1 inch to 1 Mile  
**OF THE 6TH P. M.**






  
**MAP OF**
  
**TOWNSHIP 26 S. RANGE XX W.**
  
OF THE 6TH P. M.





**KINSELEY**  
 COUNTY SEAT OF EDWARDS CO.  
 KANSAS.  
 TWP 24S RANGE 19W.  
 Scale as Plat to one inch.

