

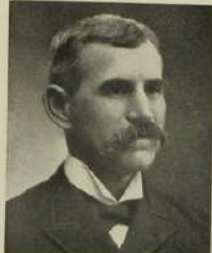
# ILLUSTRATIONS



EDWIN S. JOHNSON,  
ELLSWORTH, KANSAS.



G. B. WOLFE,  
ELLSWORTH, KANSAS.



WILLIAM A. ESSICK,  
KANOPOLIS, KANSAS.  
Mr. Essick was born near Chambersburg, Pennsylvania, Dec. 5th, 1856. His parents moved to the state of Ohio when he was a few months old. He left Ohio to go to Kansas, February 26th, 1874. The following year he homesteaded on the S. E. 1/4 Sec. 24, T. 16, R. 8, Ellsworth County, Kansas, and still resides on the original homestead. In 1881 he was united in marriage to Miss Theo. A. Wyman, formerly of Kalamazoo, Mich., to whom a daughter was born, Inez L. W. Essick. In 1889 William A. Essick deeded the homestead to his wife, Theo. A. Essick.



MR. AND MRS. JAS. P. REED,  
R. F. D. No. 2,  
KANOPOLIS, KANSAS.



LIEUT. LEIGH S. CRAWFORD,  
LORRAINE, KANSAS.



HERMANN SCHEPMANN AND  
Mrs. LOUISE SCHEPMANN,  
Who settled in Ellsworth County in  
1884. Photograph from John  
Schepmann,  
HOLYROOD, KANSAS.



SERGEANT WILLIAM E.  
WINEINGER,  
Co. B, 33rd Inf. Photograph  
from John L. Grooms, R. F. D.  
No. 2,  
BUSHTON, KANSAS.



A SQUAD OF THE KANSAS STATE GUARDS,  
Photograph from the Bank of Holyrood,  
HOLYROOD, KANSAS.



JOHN W. HENRY, JR.,  
Son of John W. Henry, Sr.,  
LORRAINE, KANSAS.



JOHN F. PRINC,  
Co. I, 33rd Reg. Inf. Son of John M.  
Prince, R. F. D. No. 2,  
WILSON, KANSAS.



ST. PAUL'S EVANGELICAL  
LUTHERAN CHURCH,  
North-West of Ellsworth, Kansas.



JAMES M. BROWN,  
ELLSWORTH, KANSAS.



PHOTOGRAPH FROM ALBERT E. STRATMAN,  
BUSHTON, KANSAS.



PHOTOGRAPH FROM W. E.  
JOHNSON,  
ELLSWORTH, KANSAS.



HERMANN SCHEPMANN,  
Co. I, 33rd Reg. Inf. Son of  
John Schepmann,  
HOLYROOD, KANSAS.



RESIDENCE OF ELDEN R. SHAW,  
ELLSWORTH, KANSAS.



RESIDENCE OF O. B. SMITH,  
TAMBIERO, KANSAS.



"OXIDE DAIRY FARM,"  
Home of W. E. Johnson,  
ELLSWORTH, KANSAS.



"HILLDROP HALL,"  
The home of William A. Essick and Theo. A.  
Essick, S. E. 1/4, Sec. 24, T. 16, R. 8, Ash  
Creek Township, Ellsworth County, Kan-  
sas.  
KANOPOLIS, KANSAS.

# ILLUSTRATIONS



"FAIR VIEW DAIRY FARM,"  
Geo. A. Young, Proprietor, R. F. D. No. 1,  
CARNEIRO, KANSAS.



PHOTOGRAPHS FROM EML J.  
PTACEK,  
WILSON, KANSAS.



FRANK MATTAS AND FAMILY GROUP,  
R. F. D. No. 2,  
WILSON, KANSAS.



JOHN SCHEPMANN AND FAMILY  
GROUP,  
Reading from left to right—First row—  
Alma, John, Harrow, Anna, Fred. Sec-  
ond row—Hattie, Carl, Hermann, Her-  
bert, Walter and Ida.  
HOLYROOD, KANSAS.



RESIDENCE OF CHAS. KOOTZ.  
Mr. Kootz settled on this farm in 1878 while it still  
was a prairie.  
HOLYROOD, KANSAS.



RESIDENCE OF WENSLAW SVOBODA,  
KANOPOLIS, KANSAS.



W. H. FLEMING AND FAMILY,  
GENESE, KANSAS.



FARM RESIDENCE OF FRANK SHANELEC,  
ELLSWORTH, KANSAS.



RESIDENCE OF EZRA DAGUE,  
WILSON, KANSAS.



JOSEPH ZBORNIK AND FAMILY GROUP  
AND VIEWS TAKEN ON HIS FARM,  
WILSON, KANSAS.



VIEWS TAKEN ON FARM OF CHAS.  
D. ESSICK,  
KANOPOLIS, KANSAS.



INTERIOR VIEW OF JEWELRY STORE  
OF FRED A. RESLER,  
ELLSWORTH, KANSAS.



RESIDENCE OF E. S. ROOT ON THE  
ARCOLA HANCH,  
BROOKVILLE, KANSAS.



HOME OF W. J. SPLITTER,  
R. F. D. No. 2,  
DURSTON, KANSAS.



SHADY LANE STOCK FARM,  
Home of A. W. Mace,  
CARNEIRO, KANSAS.



RESIDENCE OF W. C. ELDRED,  
ELLSWORTH, KANSAS.



SCENES ON FARM OF HENRY MEHL,  
R. F. D. No. 1,  
LEGRAINE, KANSAS.



BANK OF HOLYROOD,  
HOLYROOD, KANSAS.



# ILLUSTRATIONS



WM. AND ANNA PODLENA, OLD  
SETTLERS, AND EMIL AND  
ROSE PODLENA.  
Present Owners of "Riverview Farm."  
Residence on the Riverview Farm  
is shown below.  
WILSON, KANSAS.



VIEWS TAKEN ON FARM OF  
F. SCHUDDE,  
ELLSWORTH, KANSAS.



OTTO C. PEKAREK, Co. K., 35th Inf. GEO. J. PEKAREK AND  
HOME OF KAREL PEKAREK,  
R. F. D. No. 1,  
WILSON, KANSAS.



JOHN CHRUDIMSKY AND  
GRAND-DAUGHTER,  
OLLA LENOCH,  
R. F. D. No. 2,  
WILSON, KANSAS.



MR. AND MRS. RAY F. VAGUE,  
"Harris Shoe Bend Stock Farm,"  
R. F. D. No. 2,  
KANOPOLIS, KANSAS.



SCENE ON FARM OF EMIL J. PTACEK,  
WILSON, KANSAS.



FARM BUILDINGS OF FRED MEHL,  
R. F. D. No. 1,  
FREDRICK, KANSAS.



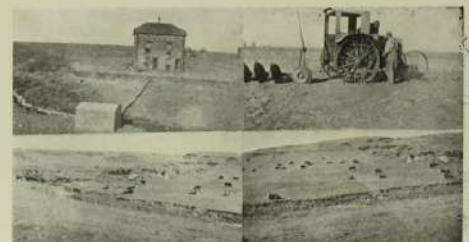
CLEAR VIEW FARM,  
Home of Richard A. Stoltenberg,  
HOLYWOOD, KANSAS.



A WEDDING GROUP. PHOTOGRAPH FROM ALBERT E. STRATMAN,  
BUCHTON, KANSAS.



RESIDENCE OF CHAS HEITSCHMIDT,  
LORRAINE, KANSAS.



PHOTOGRAPHS FROM E. S. ROOT, JR.,  
BROOKVILLE, KANSAS.



RESIDENCE OF FRANK MATTAS,  
WILSON, KANSAS.



RESIDENCE OF JOSEPH SVOBODA,  
R. F. D. No. 1,  
KANOPOLIS, KANSAS.



RESIDENCE OF JOHN GROUNDS,  
R. F. D. No. 2,  
BUCHTON, KANSAS.



RESIDENCE OF J. R. McLAURIN,  
ELLSWORTH, KANSAS.

# ILLUSTRATIONS



BUILDINGS AND SCENE ON THE  
PAWNEE RANCH,  
John W. Cleveland, Proprietor,  
CARNEIRO, KANSAS



RESIDENCE AND FARM BUILDINGS  
OF MRS. KATE BUFFINGTON,  
R. F. D. No. 2,  
MARQUETTE, KANSAS.



HAZEN FLEMING WITH CORN  
BINDER AND BARN OF  
W. H. FLEMING,  
GENESIO, KANSAS.



CATTLE, MARES AND MULES  
On the "Horse Shoe Bend Stock  
Farm," Ray T. Vague, Proprietor,  
R. F. D. No. 2,  
KANOPOLIS, KANSAS.



RESIDENCE AND SCENE ON  
FARM OF JOSEPH TYMER,  
R. F. D. No. 2,  
KANOPOLIS, KANSAS.



SCENE ON FARM OF G. E. CAMPBELL,  
GENESIO, KANSAS.



RESIDENCE OF J. W. HENRY, SR.,  
LORRAINE, KANSAS.



SCENE ON FARM OF JOSEPH VODRASKA,  
BLACK WOLF, KANSAS.



SCENE ON FARM OF CARL J. STRATMANN,  
R. F. D. No. 1,  
LORRAINE, KANSAS.



SCENE ON FARM OF JOHN SCHEPMANN,  
HOLYWOOD, KANSAS.



RESIDENCE OF JOHN M. PRINC,  
R. F. D. No. 2,  
WILSON, KANSAS.



SCENE ON FARM OF FRANK P. SKALICKY,  
R. F. D. No. 2,  
WILSON, KANSAS.



SCENE ON FARM OF JOHN V. VOPAT,  
WILSON, KANSAS.



SCENE ON FARM OF JOHN KEPKA,  
R. F. D. No. 2,  
WILSON, KANSAS.