

ILLUSTRATIONS



DANIEL MCARTHUR,
County Commissioner.



DR. C. A. RHEINMUND.



THOMAS DEVER,
Attorney-at-Law.



CHAS. MANLY.



M. E. CHURCH,
JUNCTION CITY, KANSAS.



GARY COUNTY COURT HOUSE,
JUNCTION CITY, KANSAS.



CATHOLIC CHURCH,
JUNCTION CITY, KANSAS.



PUBLIC LIBRARY,
JUNCTION CITY, KANSAS.



PAWNEE, KANSAS.
This Building was the First Capitol, Territory of
Kansas. First Legislature met July 2, 1855.



HIGH SCHOOL,
JUNCTION CITY, KANSAS.

ILLUSTRATIONS



W. P. MUENZENMAYER.



CHARLES W. BEALL,
Son of Mr. and Mrs. W. R. Beall,
and Nephew of C. F. Conroy.



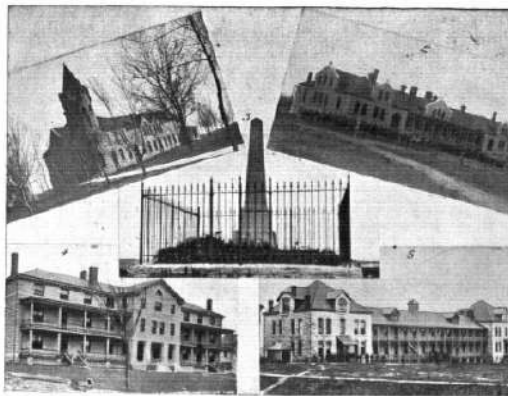
PATRICK DOYLE, (DECEASED.)



GEO. W. CARVER.



G. A. R. MONUMENT,
JUNCTION CITY, KANSAS.



FORT RILEY, KANSAS.
1.—Cavalry Administration Building. 2.—Guard Mount. 3.—Ogden Monument,
Geographical Center of the United States. 4.—Bachelor Officers' Quarters.
5.—Cavalry Quarters.



RESIDENCE AND BARN OF
FRED SCHWITZER.



RESIDENCE OF HERMAN LITTMAN.



RIVER AND ELECTRIC RAILWAY BRIDGE,
JUNCTION CITY, KANSAS.



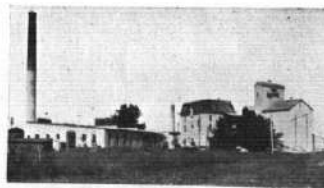
RESIDENCE OF J. R. KREGAR.



LIVERY, FEED AND SALE STABLE OF
E. HARRIS,
JUNCTION CITY, KANSAS.



HOGAN MILLING CO.,
JUNCTION CITY, KANSAS.



TYLER'S MILL,
JUNCTION CITY, KANSAS.



SCENE ON FARM OF FRED. RITTER.