

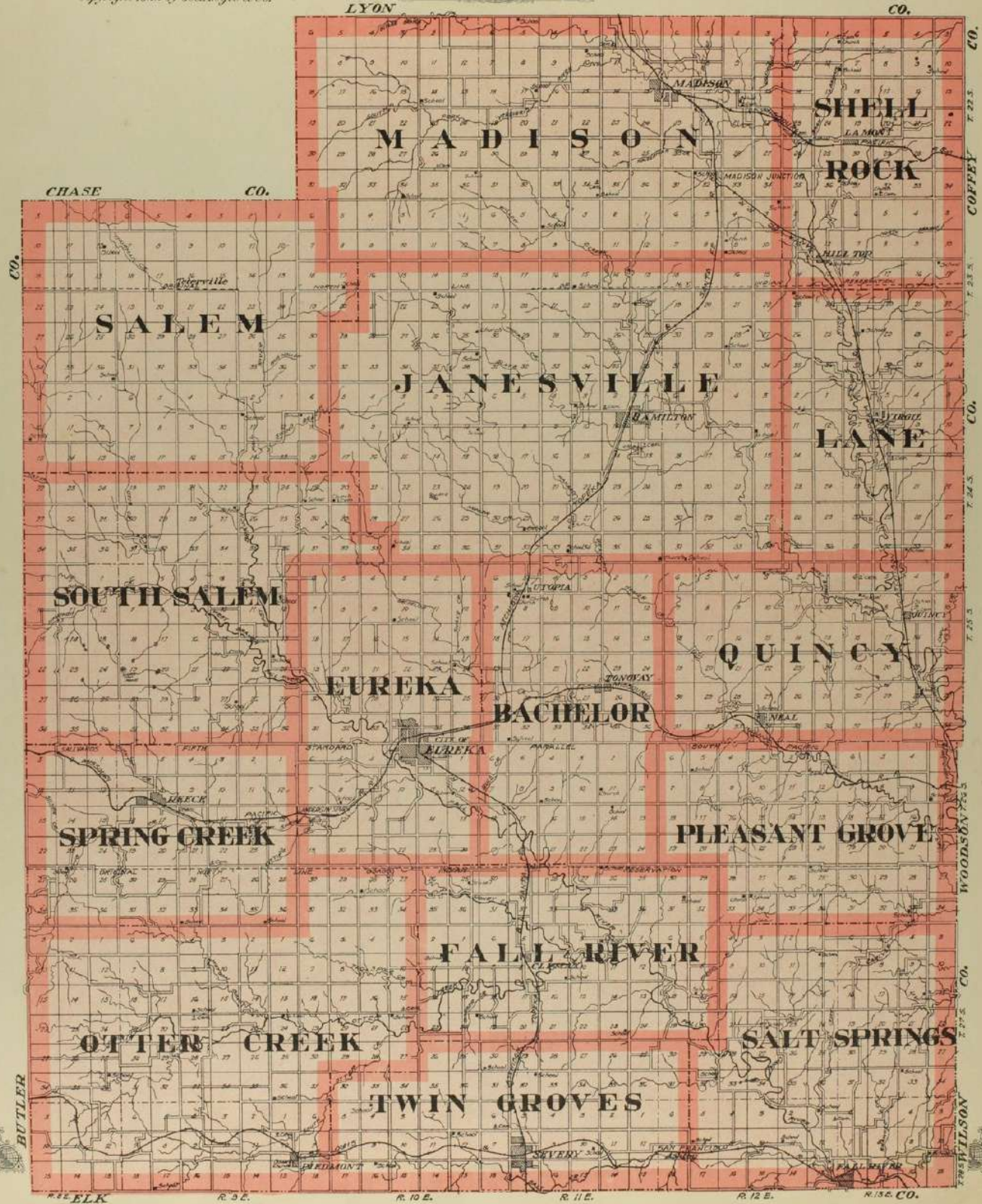
OUTLINE MAP OF

GREENWOOD COUNTY

KANSAS

Copyright 1922 by Geo. A. Ogle & Co.

Scale 3/8 of 1 inch to 1 mile



CO.

BUTLER

CHASE CO.

LYON

CO.

COFFEY

CO.

CO.

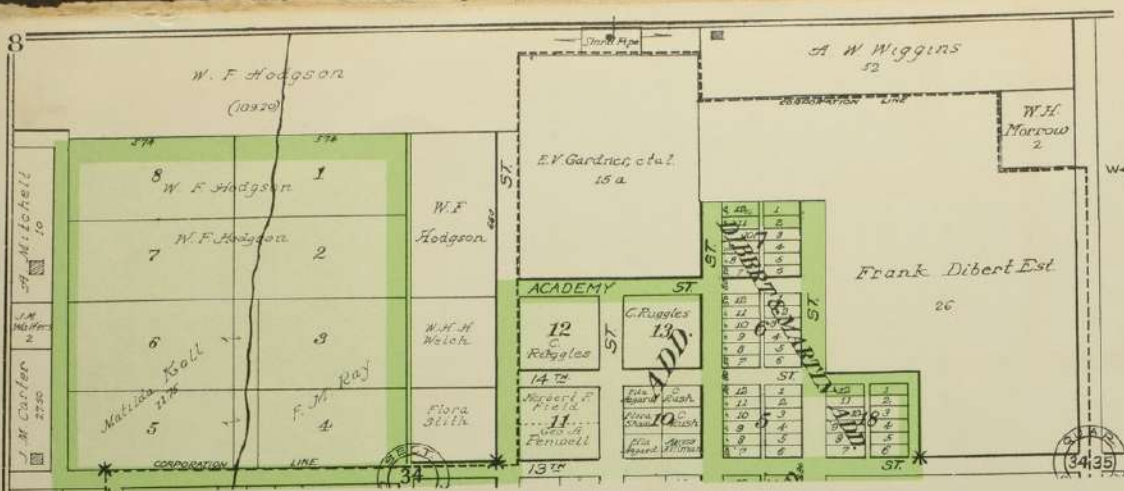
WOODSON

CO.

WAGON WHEEL

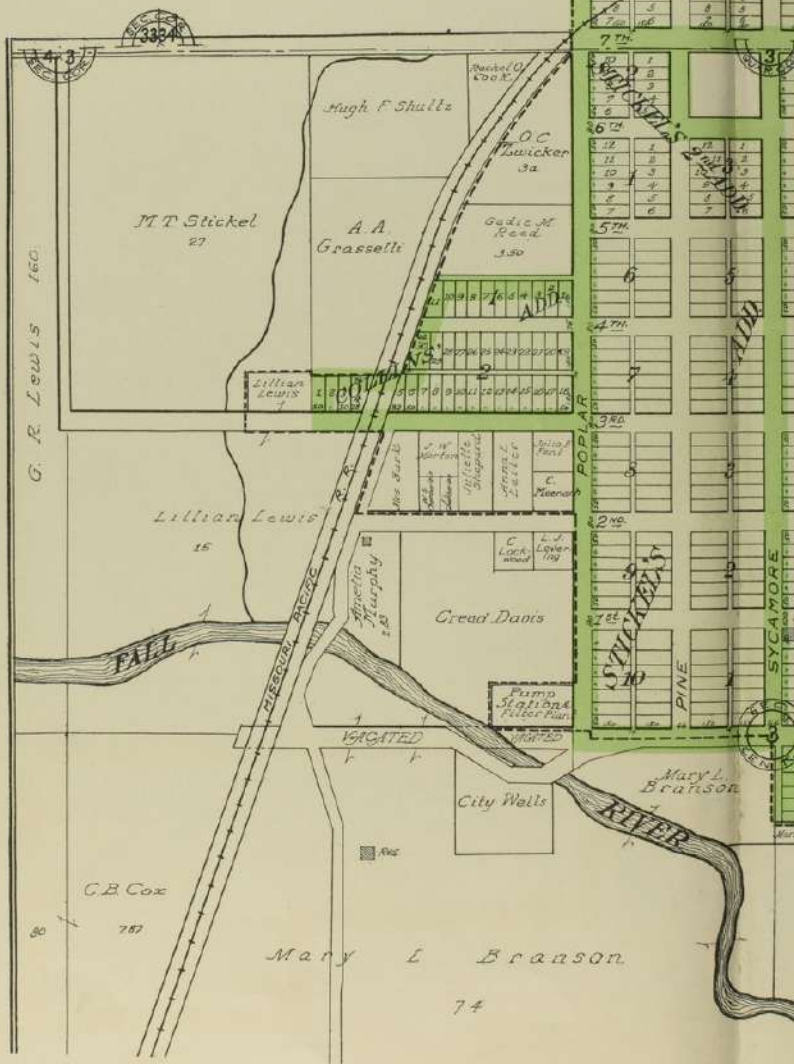
R. 9 E. R. 10 E. R. 11 E. R. 12 E. R. 13 E.



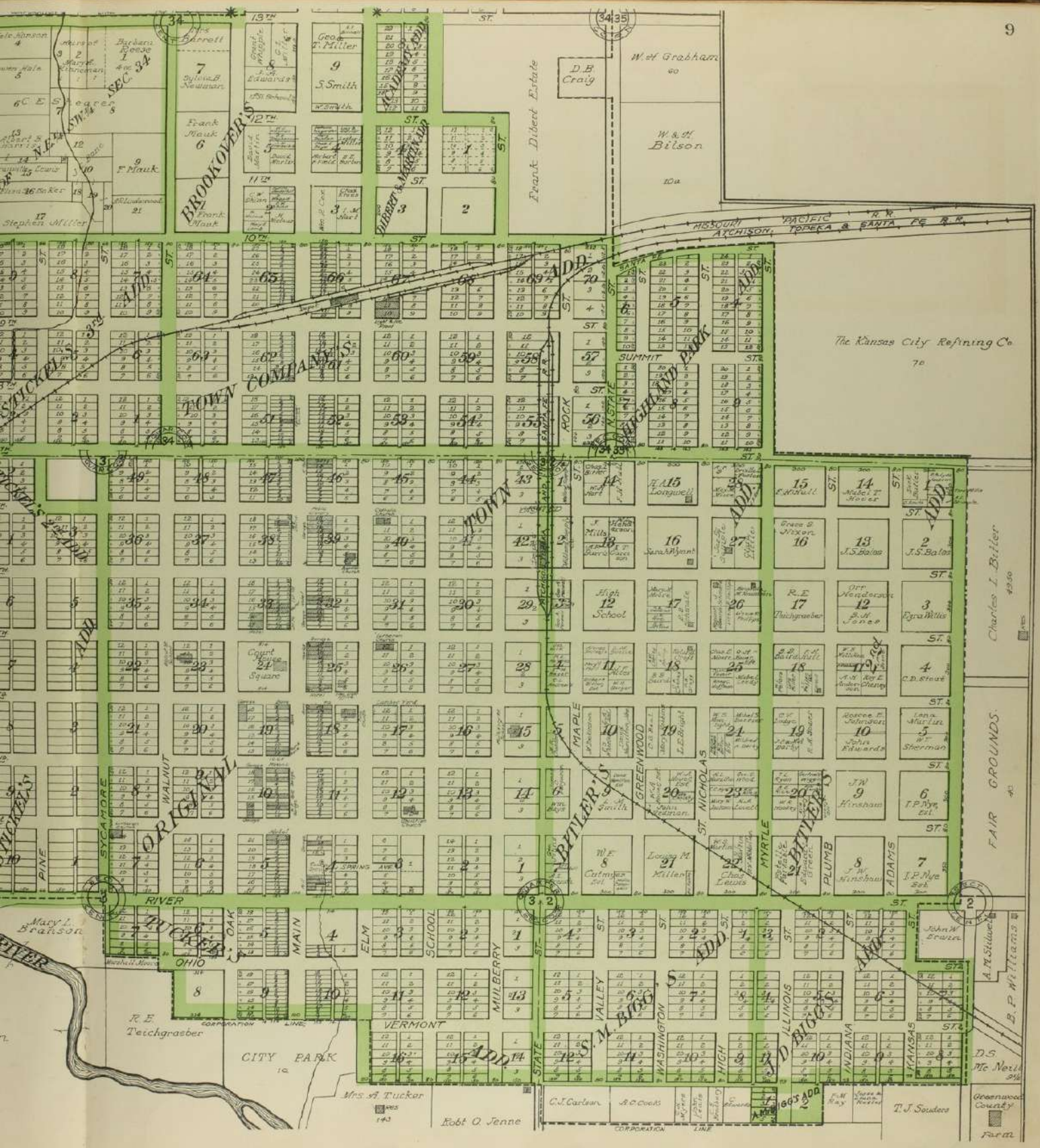


This plat adjoins main plat at points marked thus \* \* \*

The City of  
**EUREKA**  
 County Seat of Greenwood Co., Kan.  
 Twp. 25 and 26 South Range 10 East  
 Scale 400 Feet to 1 Inch  
 Copyright 1922 by Geo. A. Ogilve and ©













# SEVERY

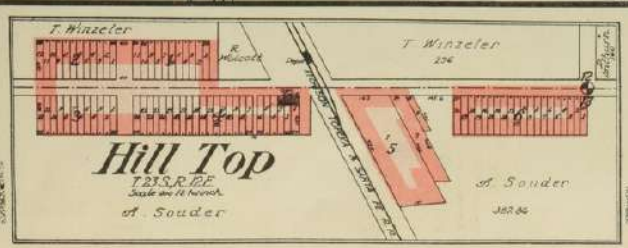
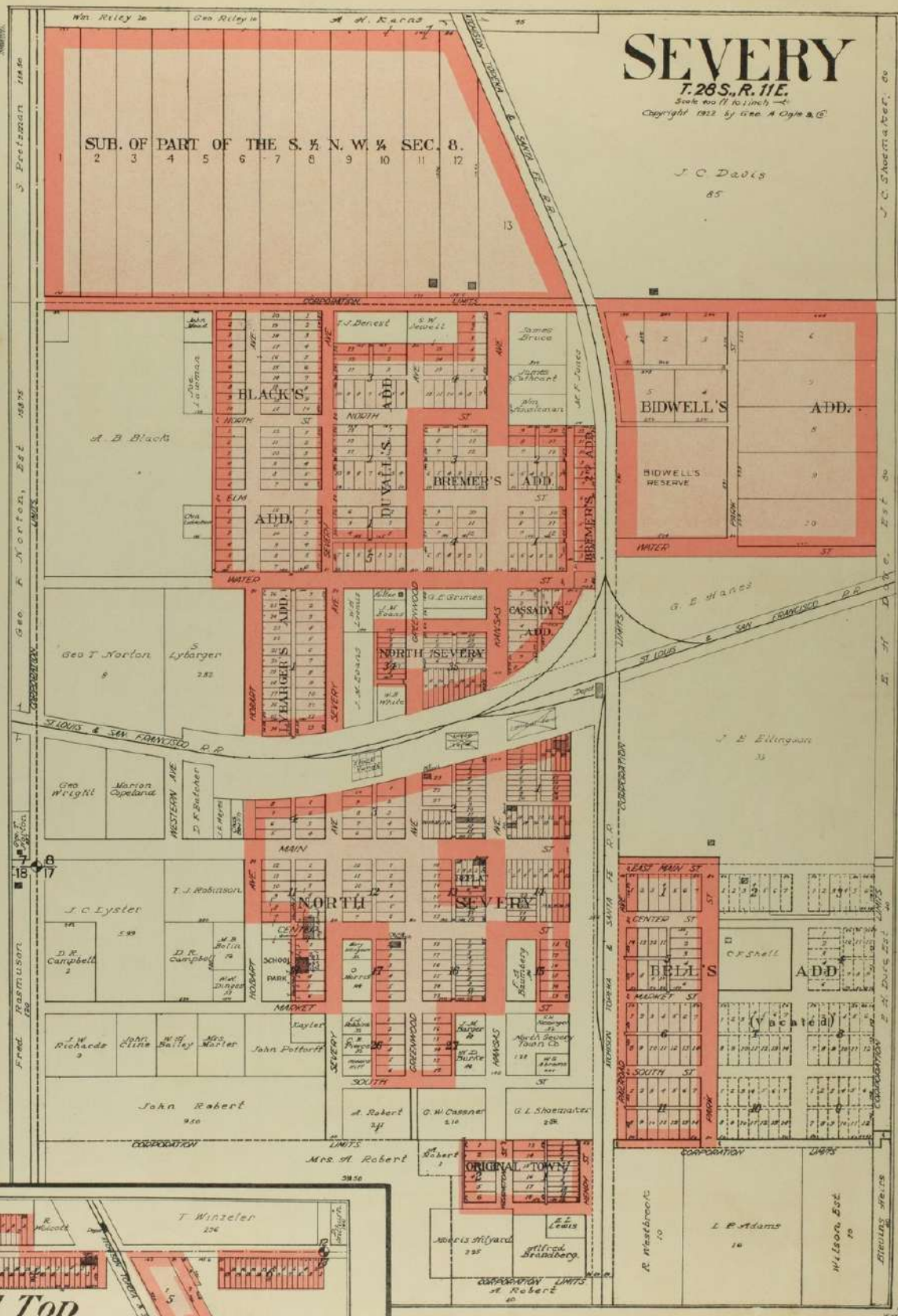
T. 28 S., R. 11 E.

Scale 100 ft to 1 inch  
Copyright 1922 by Geo. A. Ogle & Co.

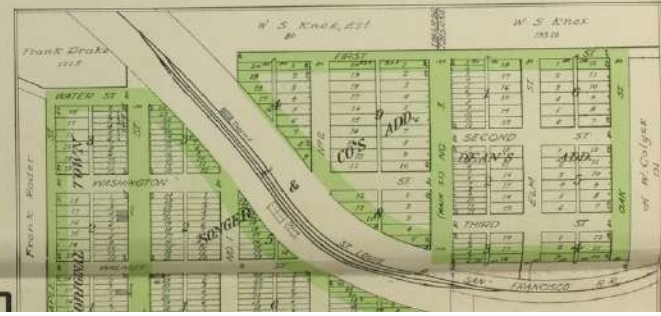
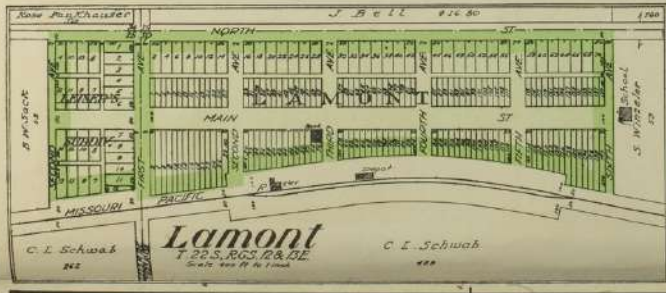
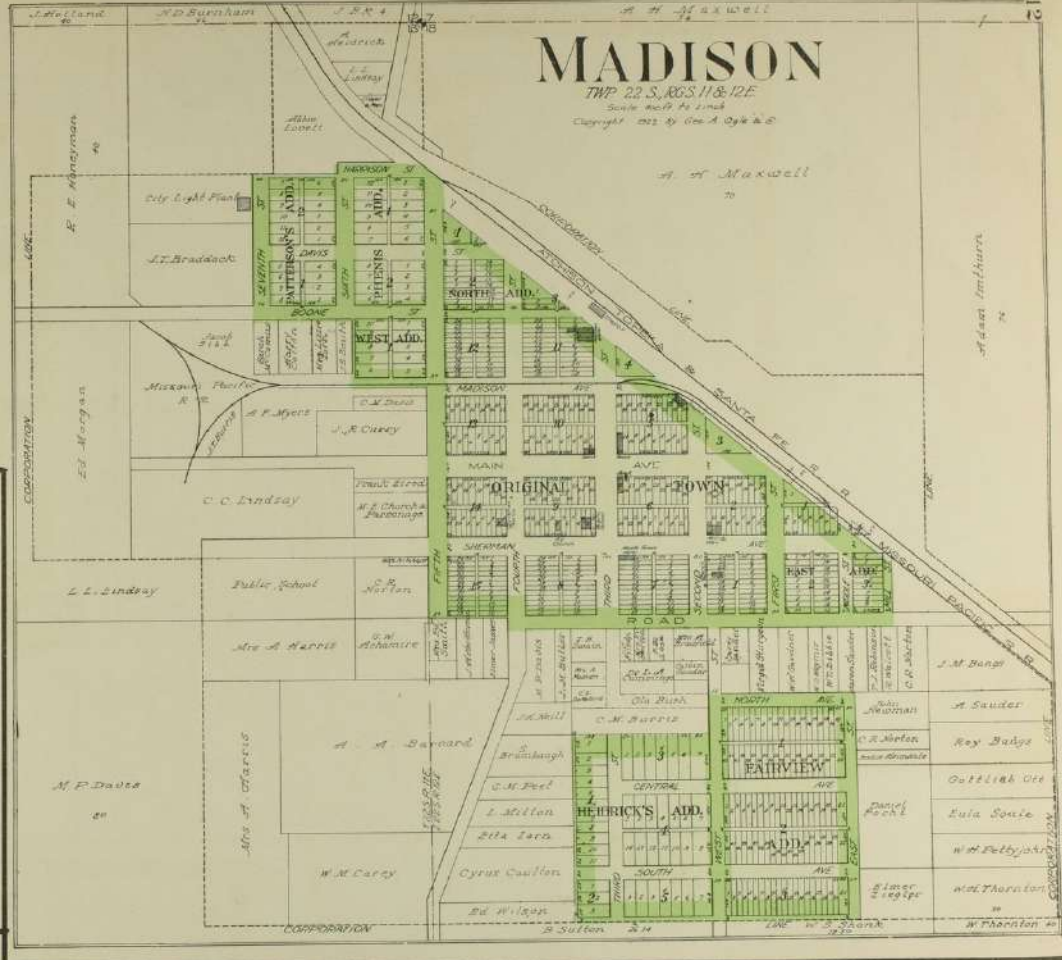
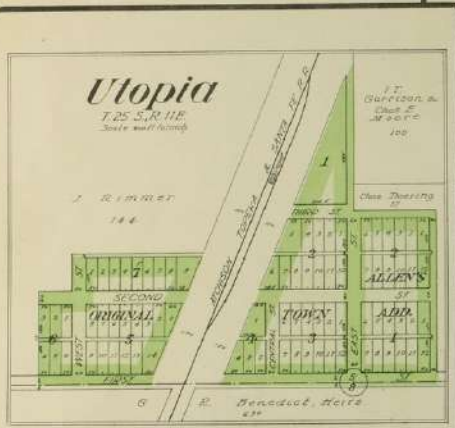
SUB. OF PART OF THE S. 1/4 N. W. 1/4 SEC. 8.

2 3 4 5 6 7 8 9 10 11 12

J. C. Davis  
85





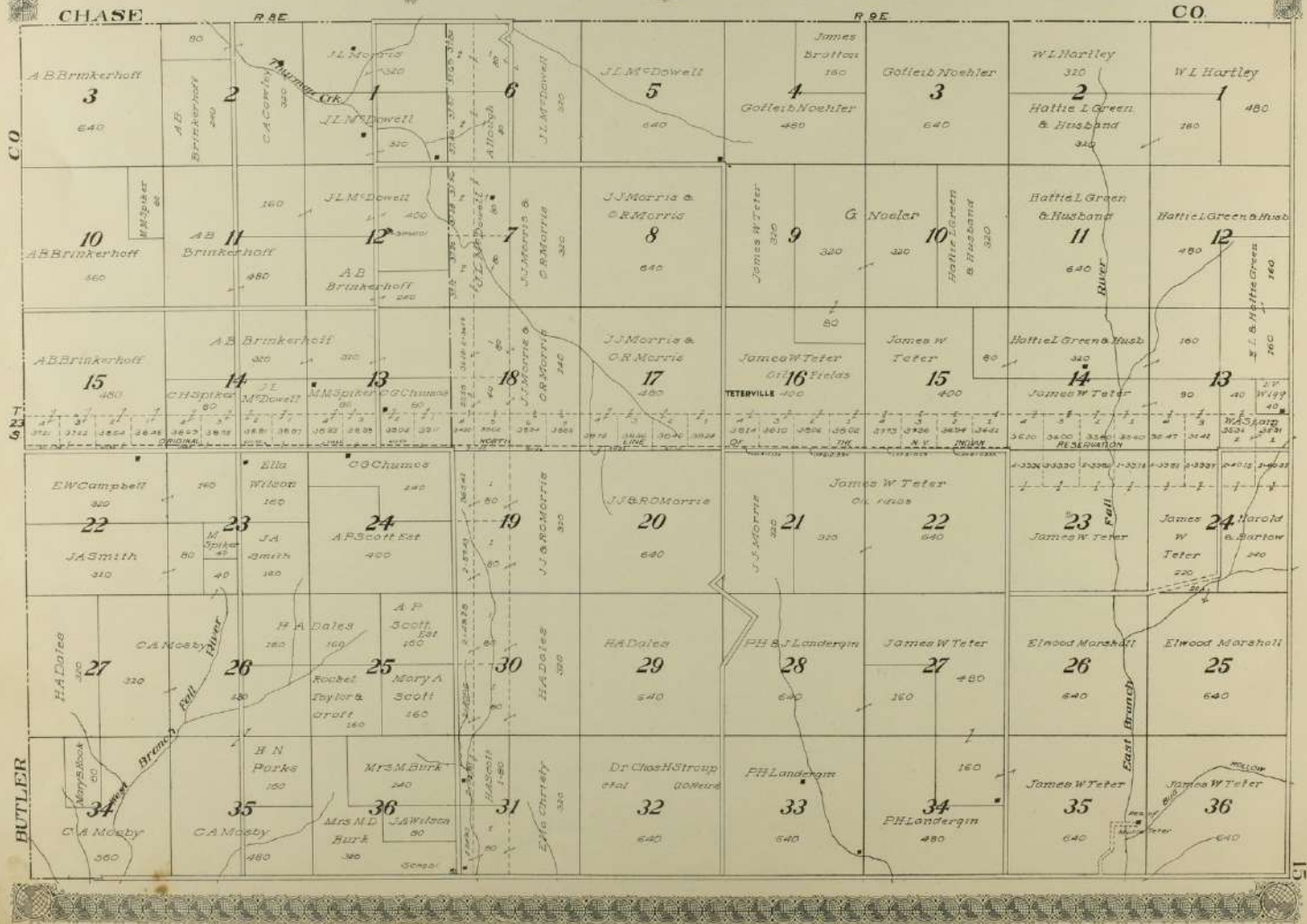







  
**MAP OF**
  
**TOWNSHIP 23 S. RANGE 9 E. and**
  
**PART OF TOWNSHIP 23 S. RANGE 8 E.**
  
 OF THE 6th P. M.

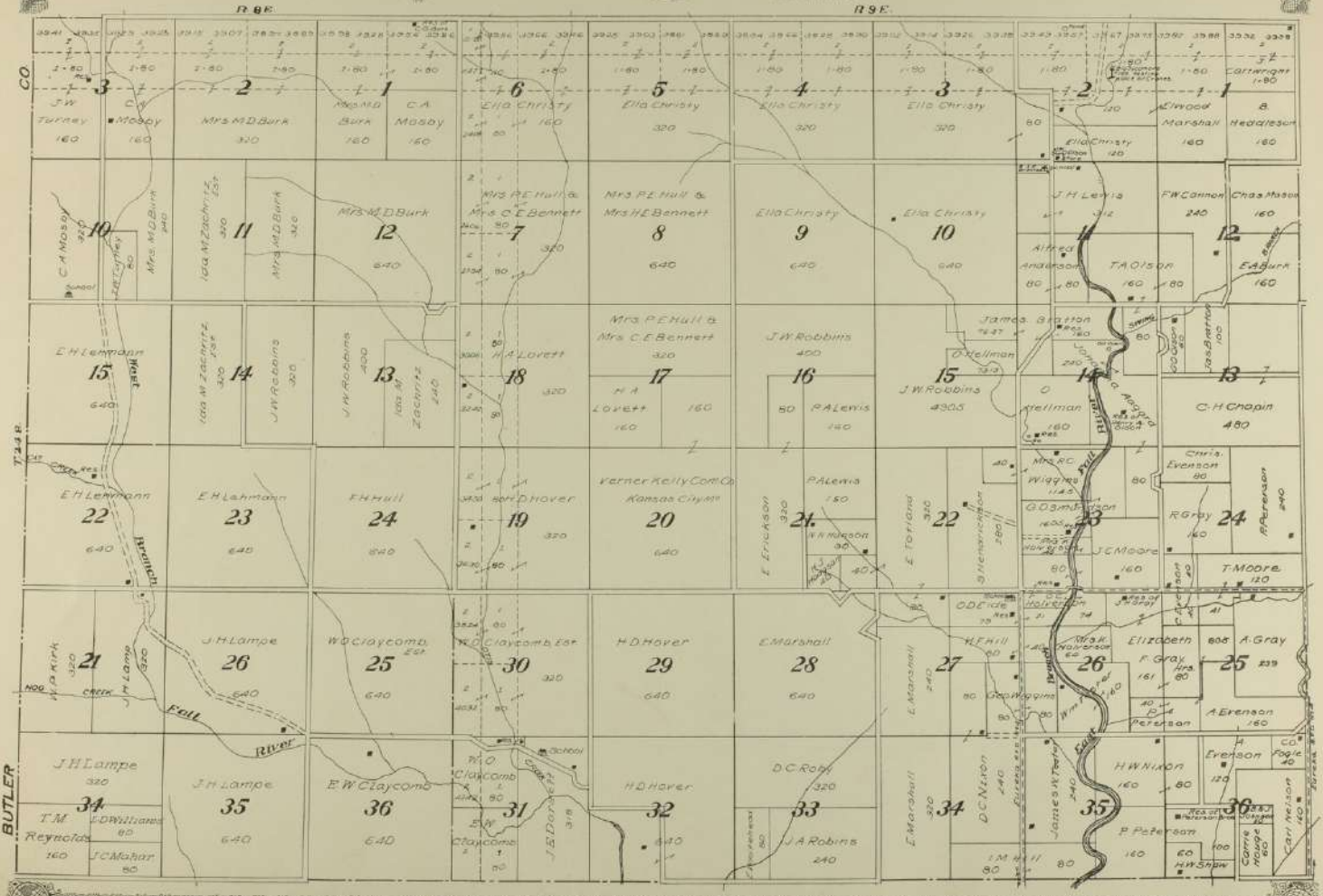
Scale 1 1/2 inches to 1 mile






  
**MAP OF**  
**TOWNSHIP 24 S., RANGE 9 E. and**  
**PART of TOWNSHIP 24 S., RANGE 8 E.**  
 OF THE 6th P. M.

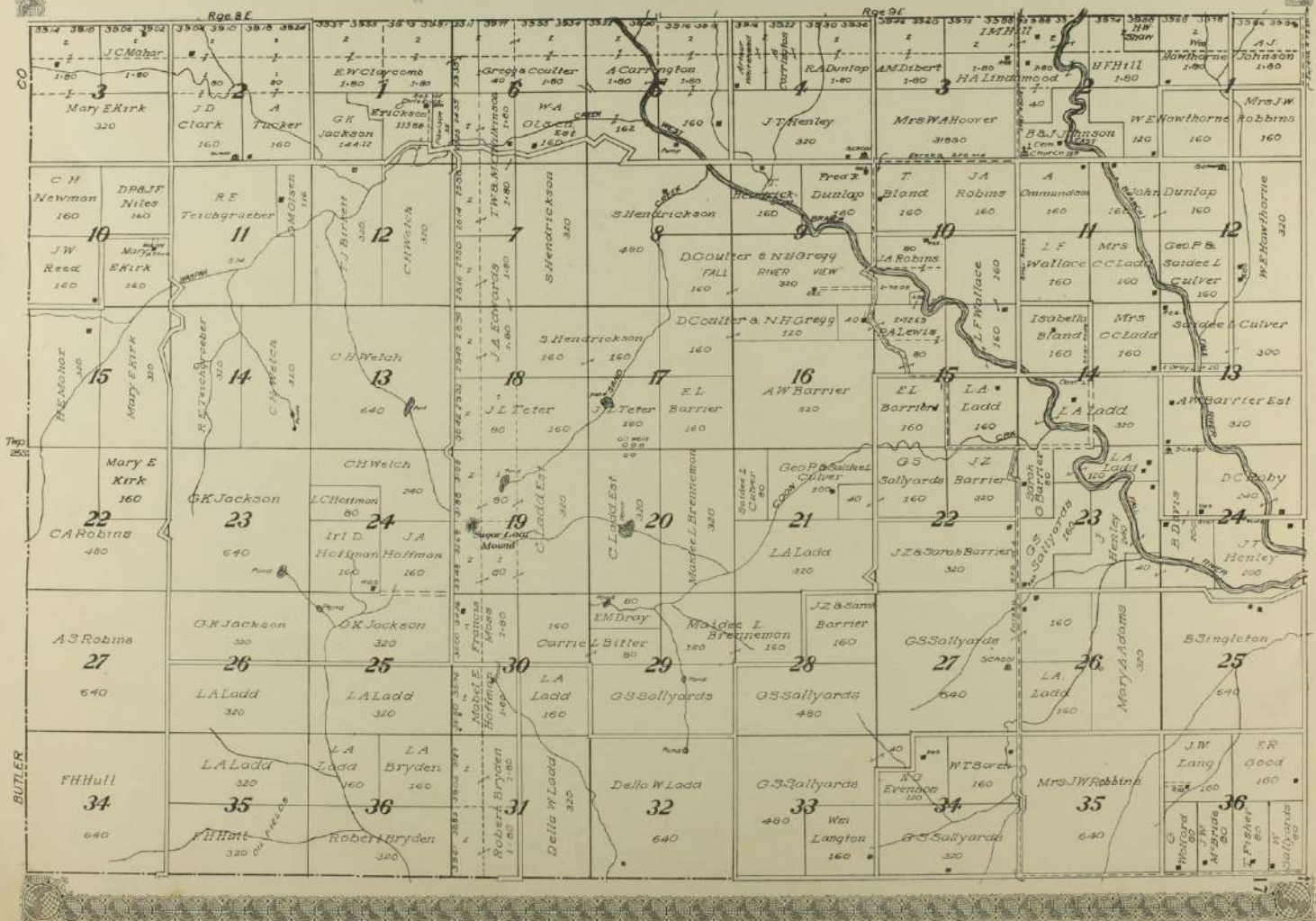
Scale 1 1/2 inches to 1 mile






  
**MAP OF**
  
**TOWNSHIP 25 S., RANGE 9 E. and**
  
**PART of TOWNSHIP 25 S., RANGE 8 E.**
  
 OF THE 4th P. M.

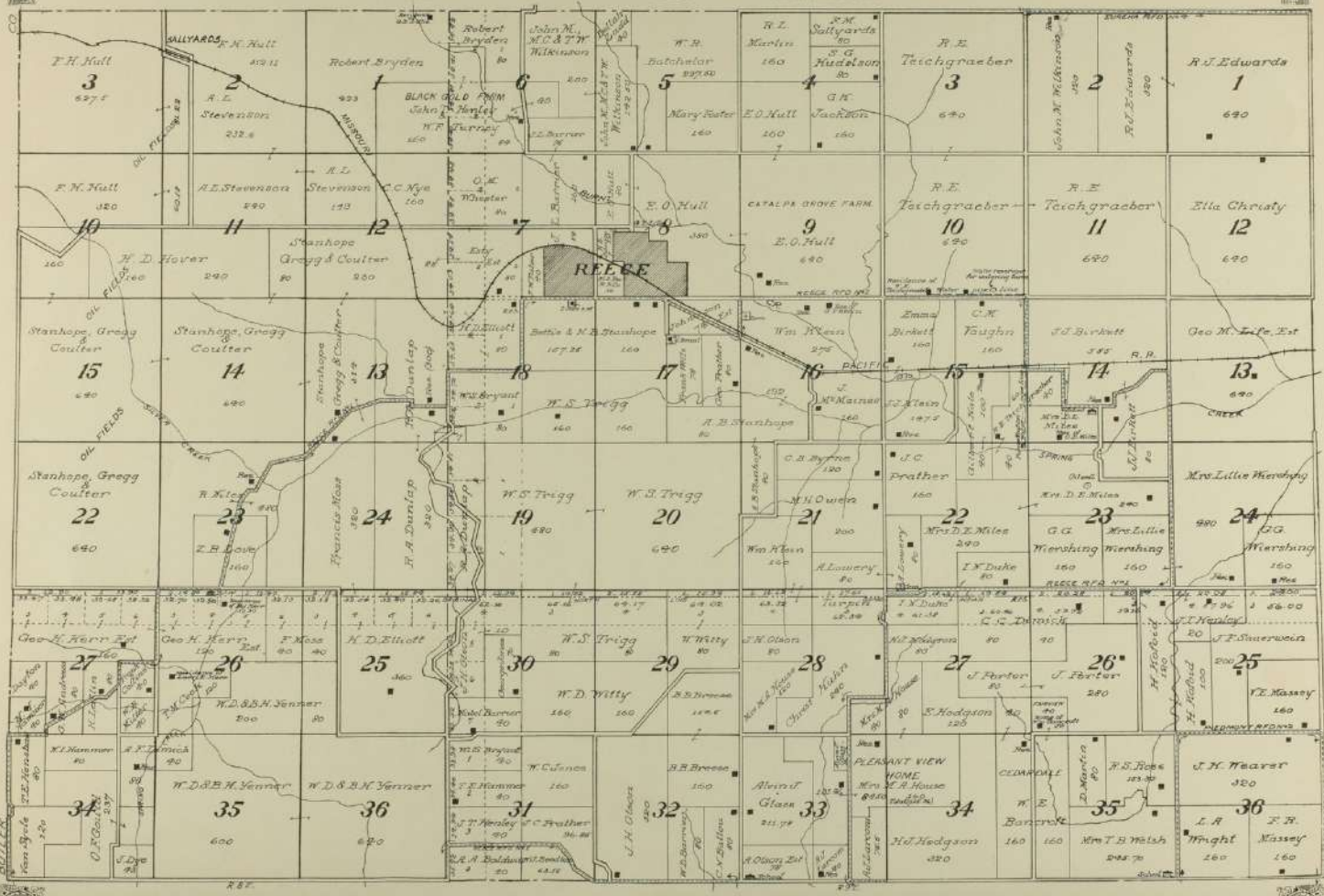
Scale 1/4 inches to 1 mile





MAP OF  
**TOWNSHIP 26 S., RANGE 9 E. and**  
**PART of TOWNSHIP 26 S., RANGE 8 E.**  
 OF THE 6th P. M.

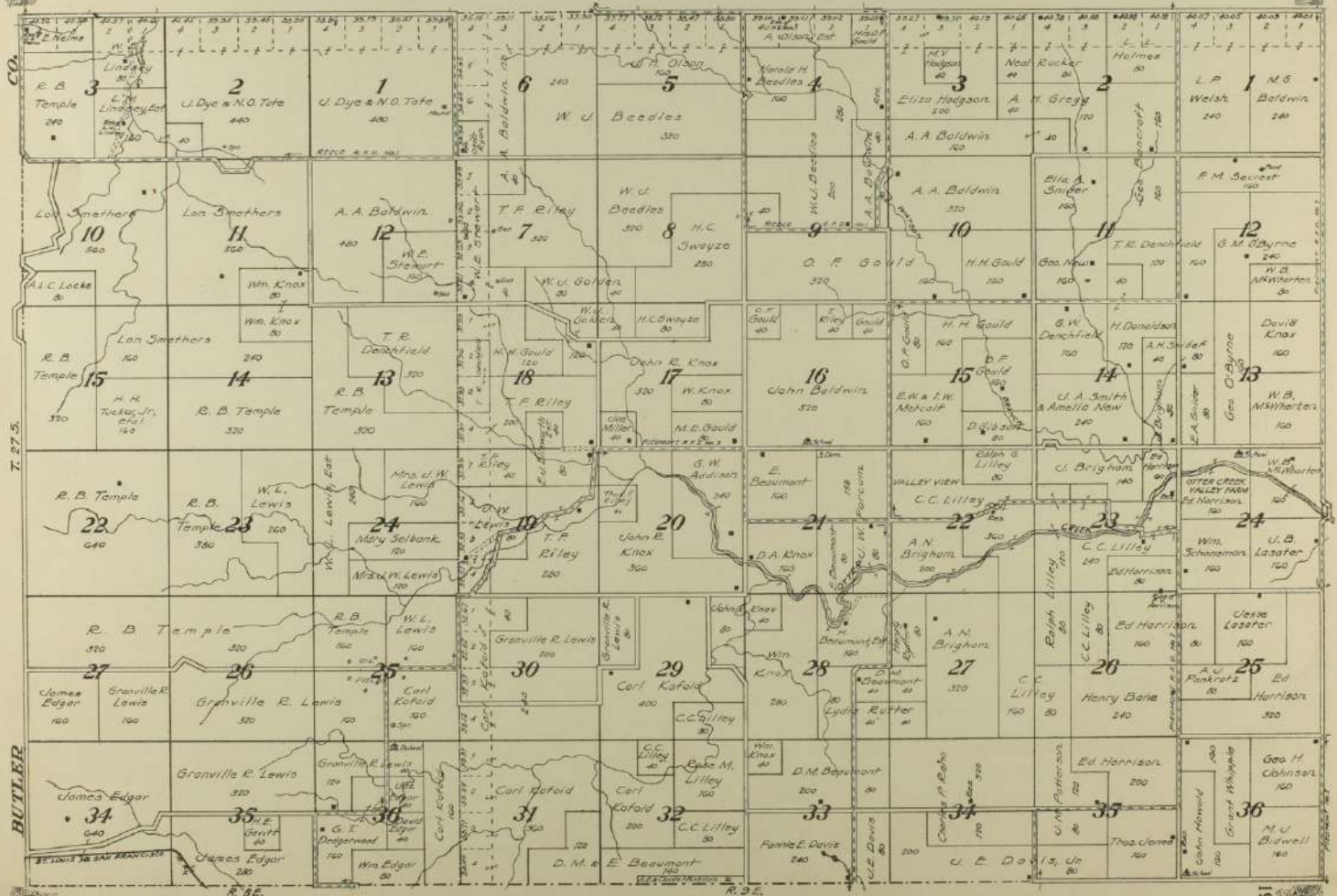
Scale 1 1/2 inches to 1 mile






  
**MAP OF**
  
**TOWNSHIP 27 S., RANGE 9 E. and**
  
**PART of TOWNSHIP 27 S., RANGE 8 E.**
  
 OF THE 6th P. M.

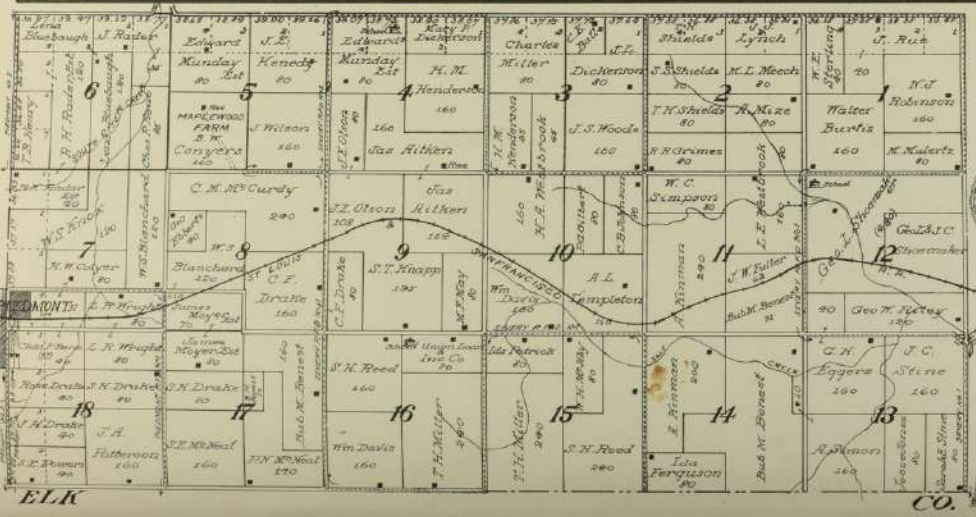
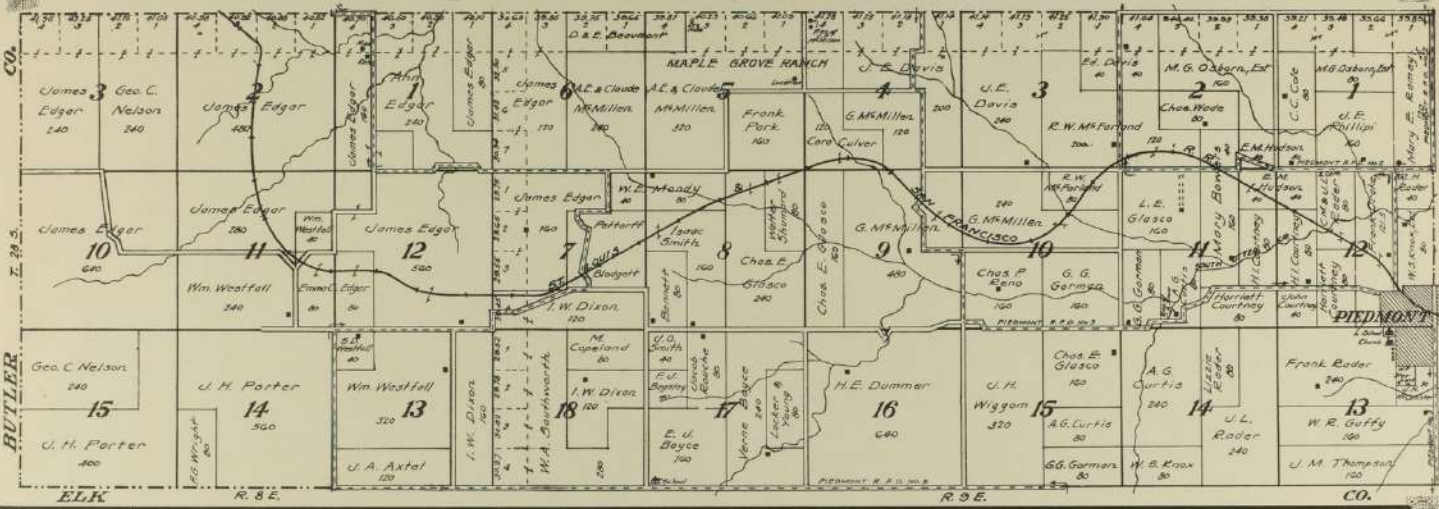
Scale 1 1/2 inches to 1 mile





MAP OF  
Part of Township 28 S., Ranges 8 and 9 E.  
OF THE 6th P. M.

Scale 1 1/4 inches to 1 mile

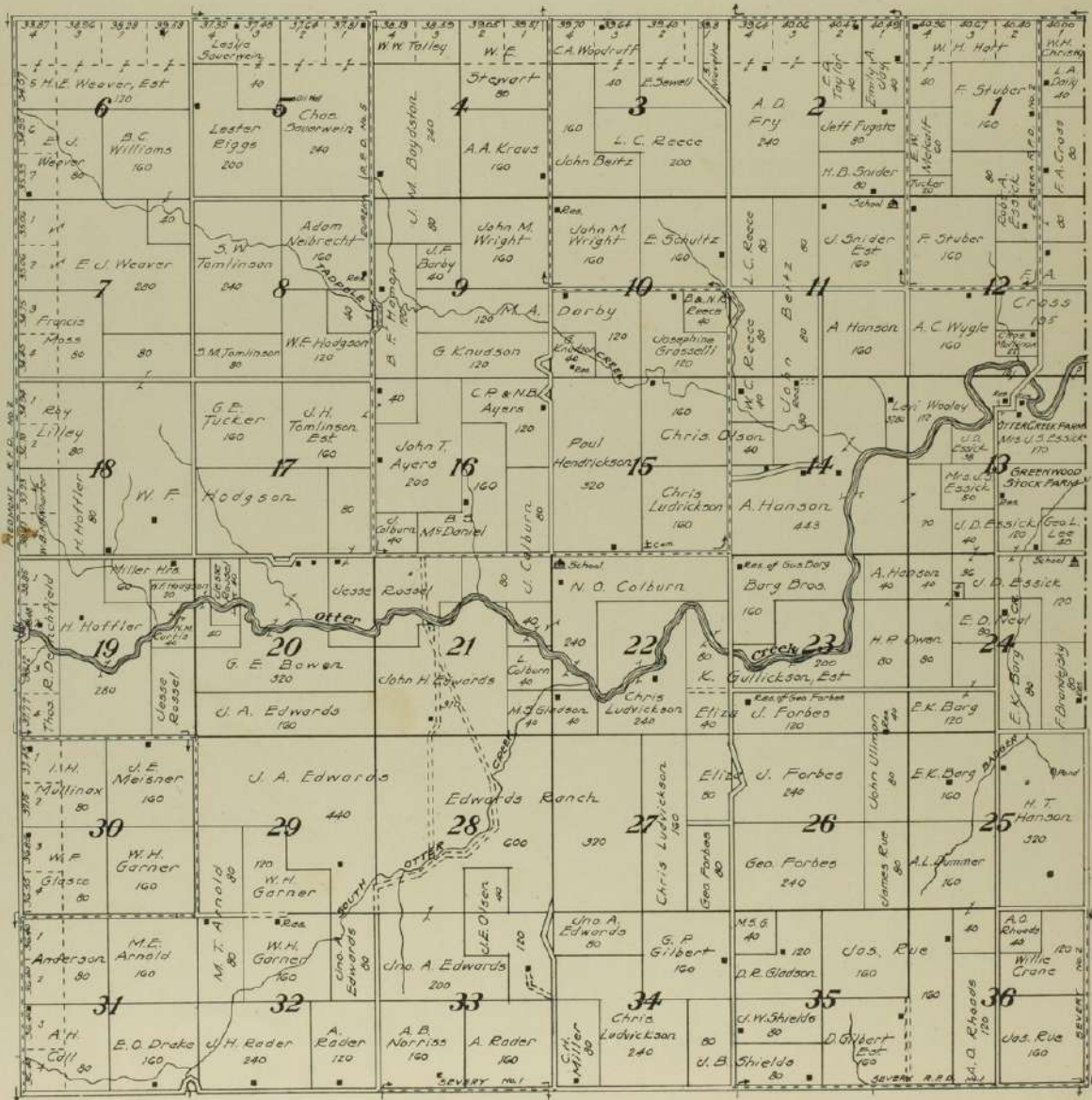


MAP OF  
Part of Township 28 S., Range 10 E.  
OF THE 6th P. M.

Scale 1 1/4 inches to 1 mile



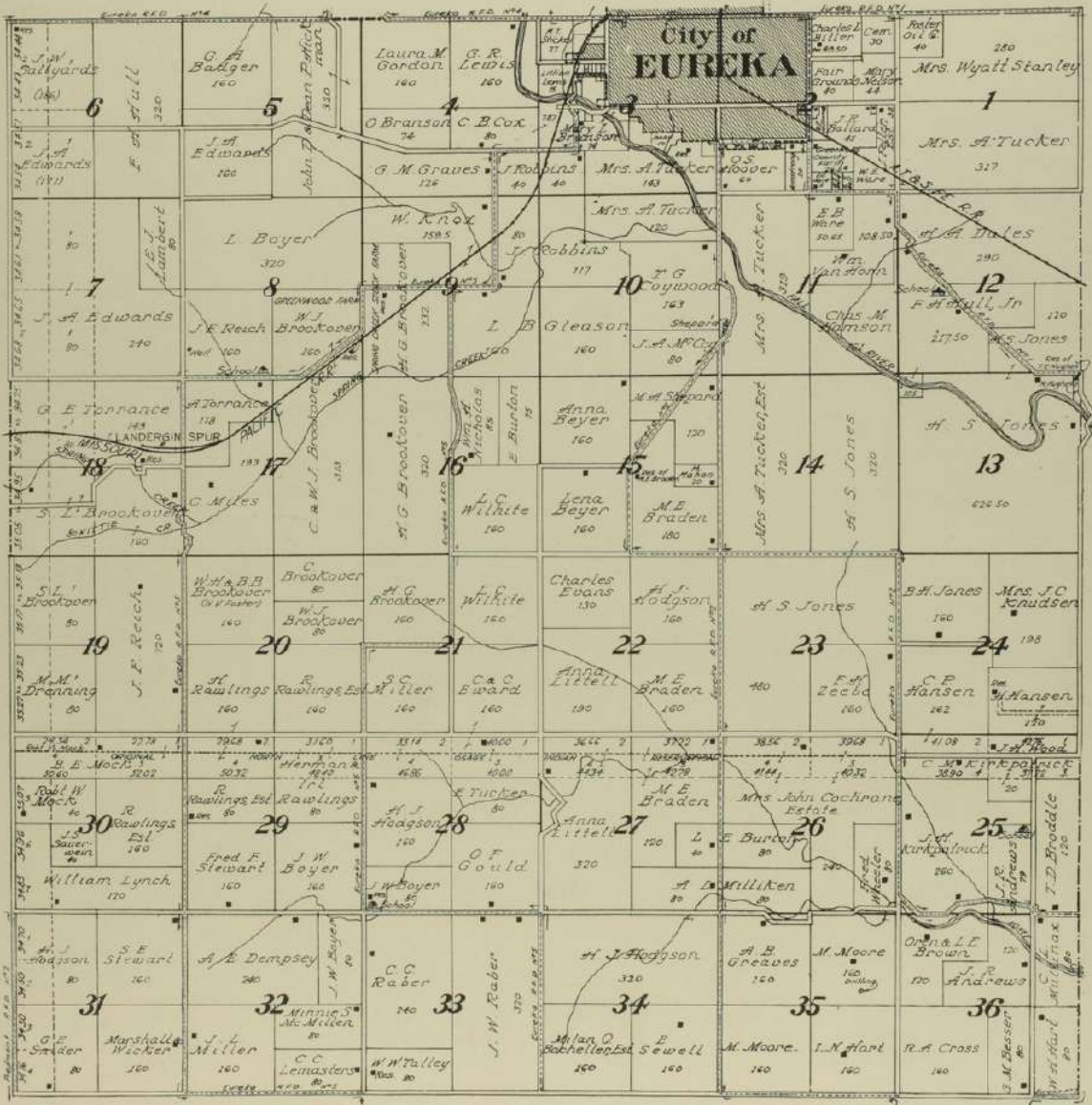

  
**MAP OF**  
**TOWNSHIP 27 S., RANGE 10 E.**  
 OF THE 6th P. M.  
 Scale 1 1/4 inches to 1 mile





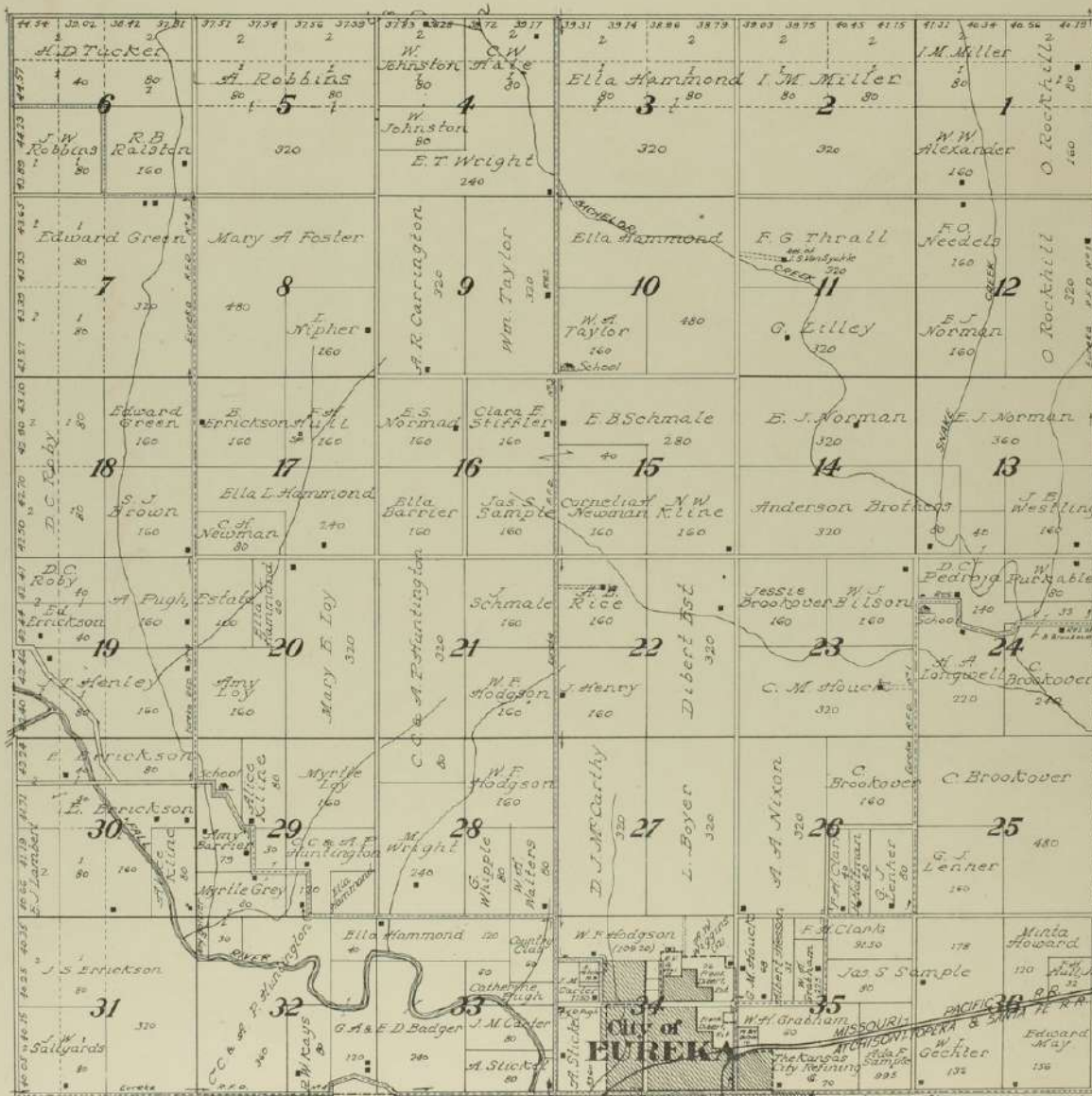
**MAP OF**  
**TOWNSHIP 26 S., RANGE 10 E.**  
 OF THE 6th P. M.

Scale 1 1/4 inches to 1 mile



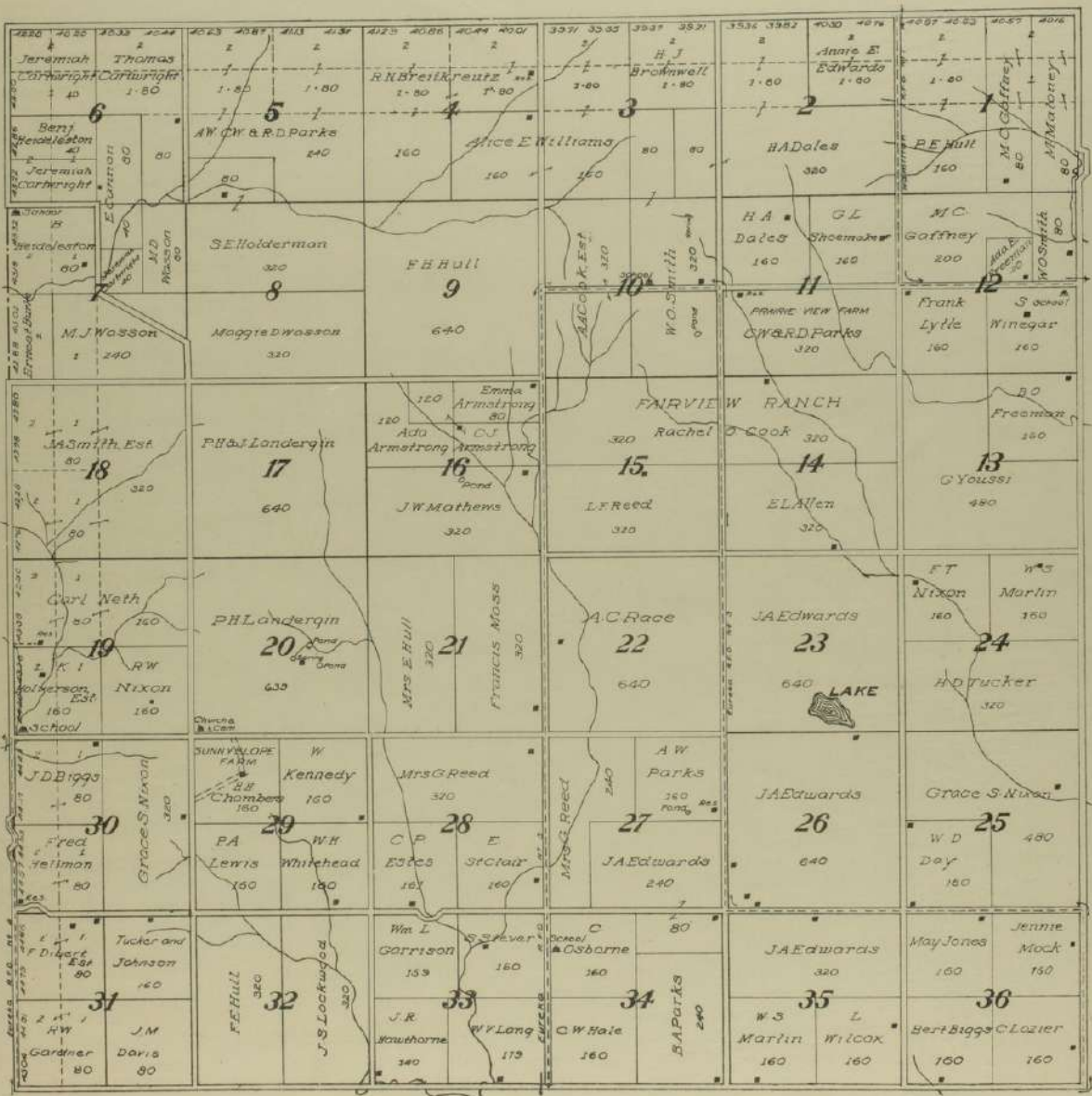


MAP OF  
TOWNSHIP 25 S., RANGE 10 E.  
OF THE 6th P. M.  
Scale 1 1/4 inches to 1 mile





**MAP OF**  
**TOWNSHIP 24 S., RANGE 10 E.**  
 OF THE 6th P. M. Scale 1 1/4 inches to 1 mile





**MAP OF**

**TOWNSHIP 23 S., RANGE 10 E.**

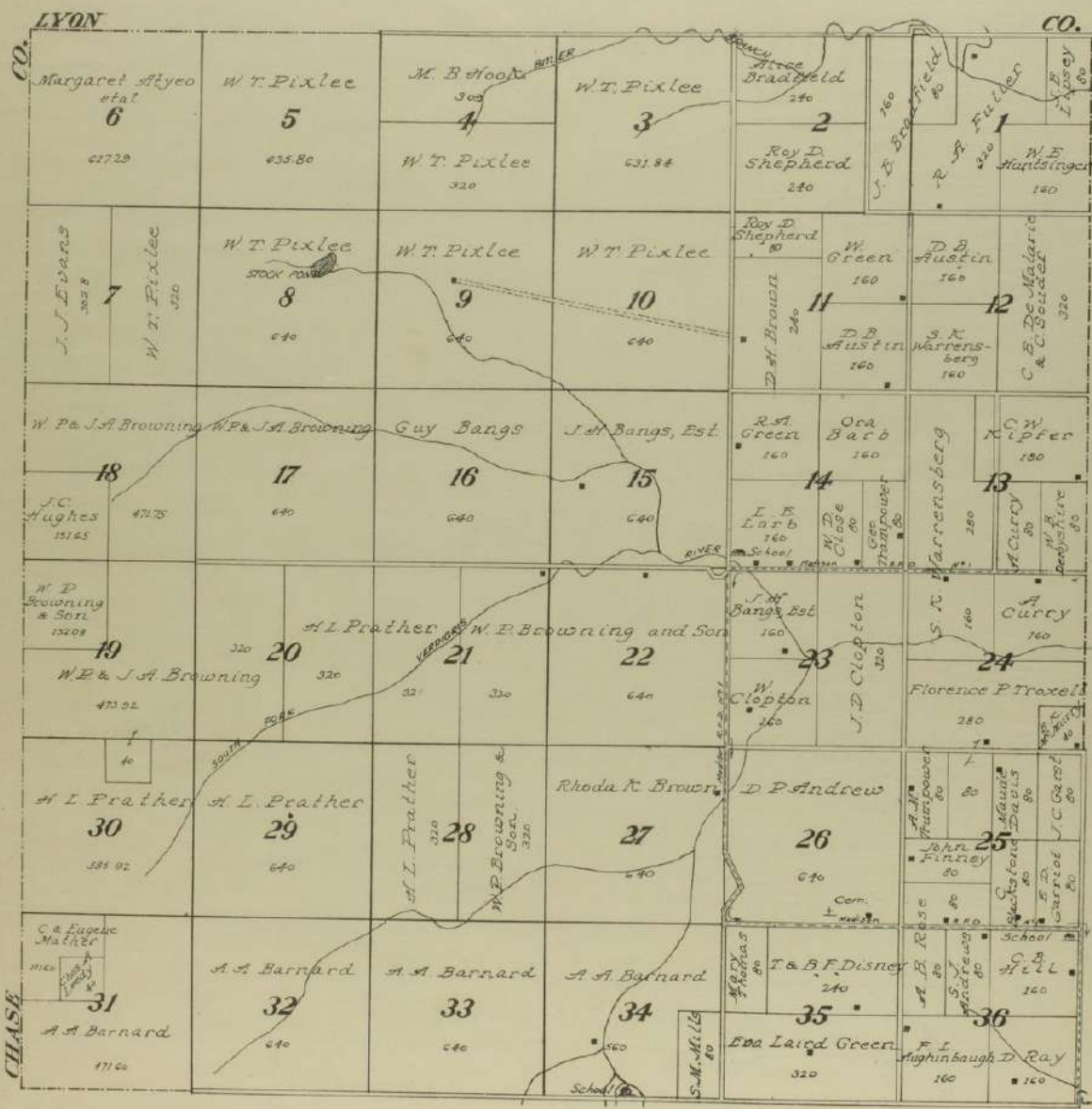
OF THE 6th P. M.

Scale 1 3/4 inches to 1 mile

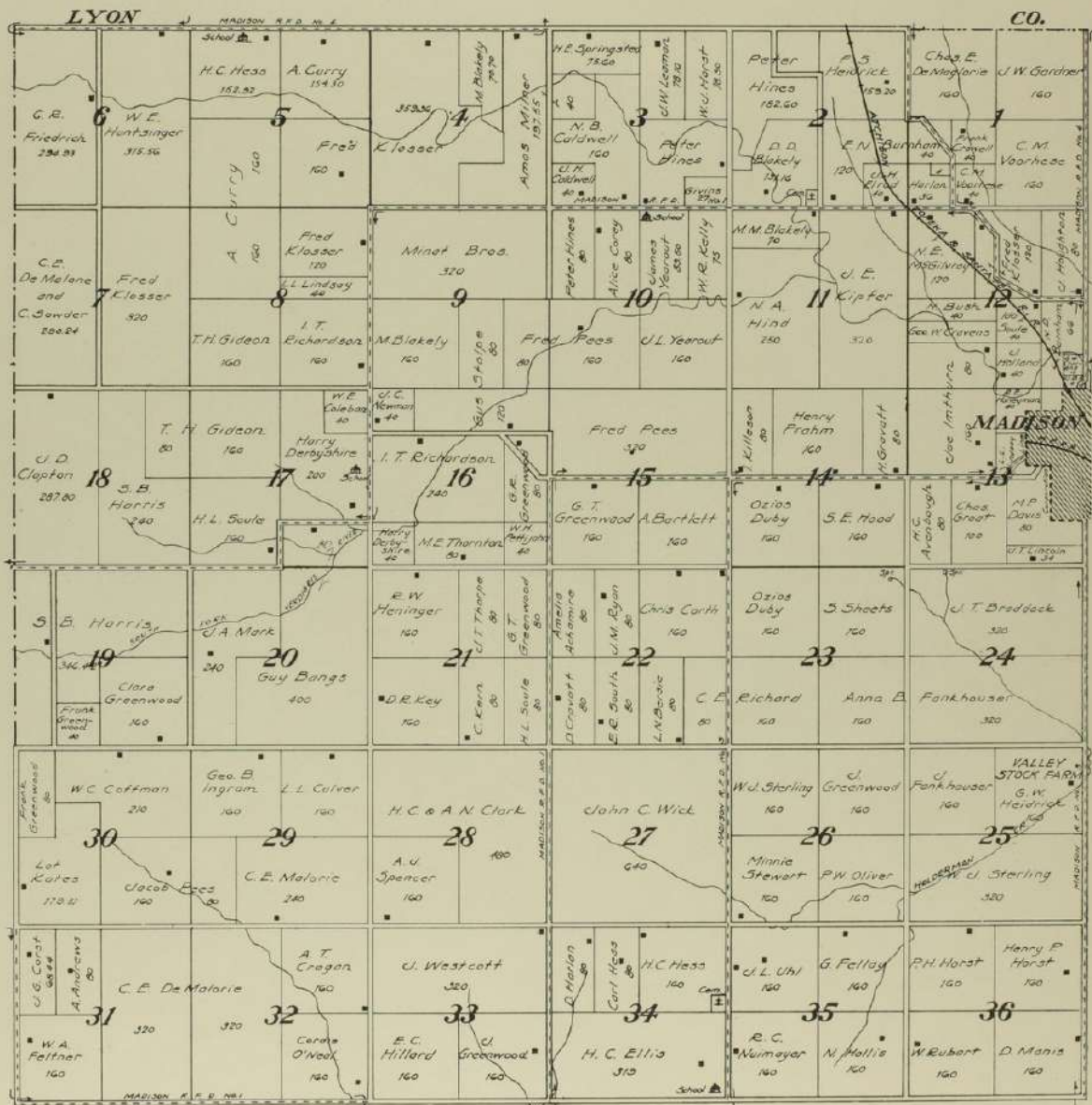
<p>2 1 + 80 A A Barnard <b>6</b> 320 80</p>	<p>A A Barnard <b>5</b> 640</p>	<p>A A Barnard <b>4</b> 480 Anno Laird 320 BurdLantz 320</p>	<p>Bangs Brook 160 <b>3</b> CE Laird 480</p>	<p>M. Uhl 160 Willow <b>2</b> DV Curry 160 JFBell 320</p>	<p>Creek JFBell 640 <b>1</b></p>
<p>J.S Johnson 1 80 <b>7</b> HG Culver 320 80</p>	<p>EV Wiggins 160 W.O Smith <b>8</b> 160</p>	<p>J.L Kramer 320 <b>9</b> A.E. Strong &amp; Coe 320</p>	<p>John Laird 240 <b>10</b> W.O. Cummins Smith 160 Cary 240</p>	<p>CE Groat 160 CE Laura <b>11</b> 360 J.S Holsted 160</p>	<p>M.C. Hale <b>12</b> 640</p>
<p>Minnie E Johnson 1 80 <b>18</b> W.A. Spain E.J. Johnson 320 80</p>	<p>James Hollis 160 <b>17</b> 280</p>	<p>J.L Kramer 160 J. Hollis <b>16</b> 240 E. Green 40 40 Wiggins 40 40</p>	<p>Grant Burgess 240 <b>15</b> Lena B. Scott 240</p>	<p>Sybill Winegar <b>14</b> 480</p>	<p>PH Piatt 240 <b>13</b> T. Edwards 240</p>
<p>JR Race 1 160 <b>19</b> 1 80</p>	<p>James Hollis 160 J.N. Burrel <b>20</b> 80 JR Race 320</p>	<p>E.Kans 160 L.B. Co <b>21</b> 160 Amelia Tucker 160 80</p>	<p>Lena B. Scott 160 <b>22</b> Amelia Tucker 320</p>	<p>Lena B. Scott 160 <b>23</b> 80 J.R. Aiken 160 260</p>	<p>F.J. Burket <b>24</b> 320</p>
<p>J.W. Martindell 1 80 <b>30</b> 320 80</p>	<p>FG Thrall <b>29</b> 640</p>	<p>FG Thrall <b>28</b> 640</p>	<p>FG Thrall <b>27</b> 640</p>	<p>C. Mason 320 <b>26</b> M.W. &amp; J. Fallert 320 Hamilton 80 Newman 160</p>	<p>M.W. &amp; J. Fallert 396 <b>25</b> 160 CELOY 85</p>
<p>J.W. Martindell 1 80 <b>31</b> 320 80</p>	<p>FP Lewis 160 <b>32</b> FG Thrall 480</p>	<p>FG Thrall 320 <b>33</b> Coza J Wells 320</p>	<p>PE Hull <b>34</b> 640</p>	<p>Annie A Edwards <b>35</b> 640</p>	<p>J.R. Neil 160 <b>36</b> S.C. Brown 160 ER South 160</p>



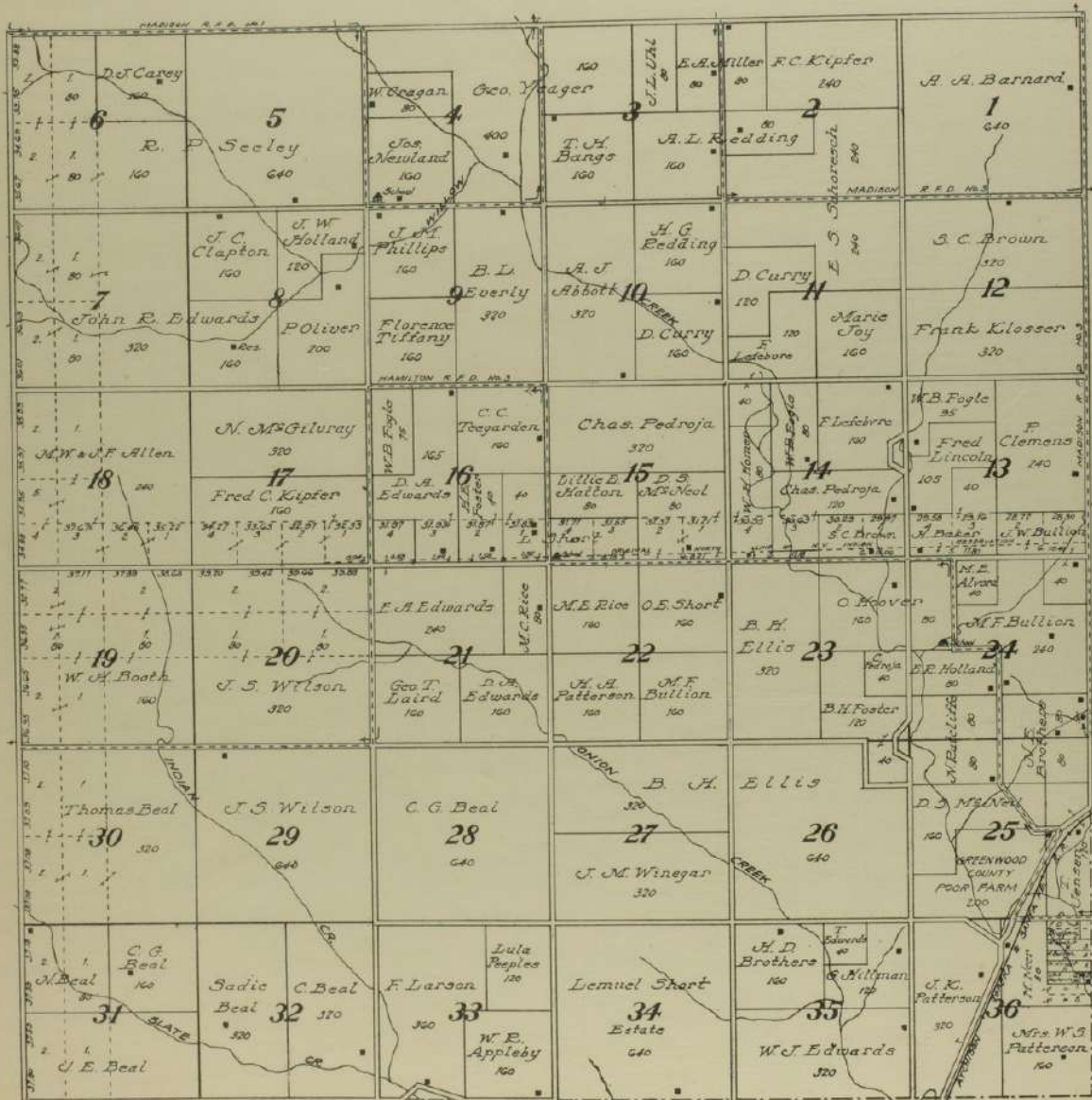
**MAP OF**  
**TOWNSHIP 22 S., RANGE 10 E.**  
 OF THE 6th P. M.  
 Scale 1 1/4 inches to 1 mile





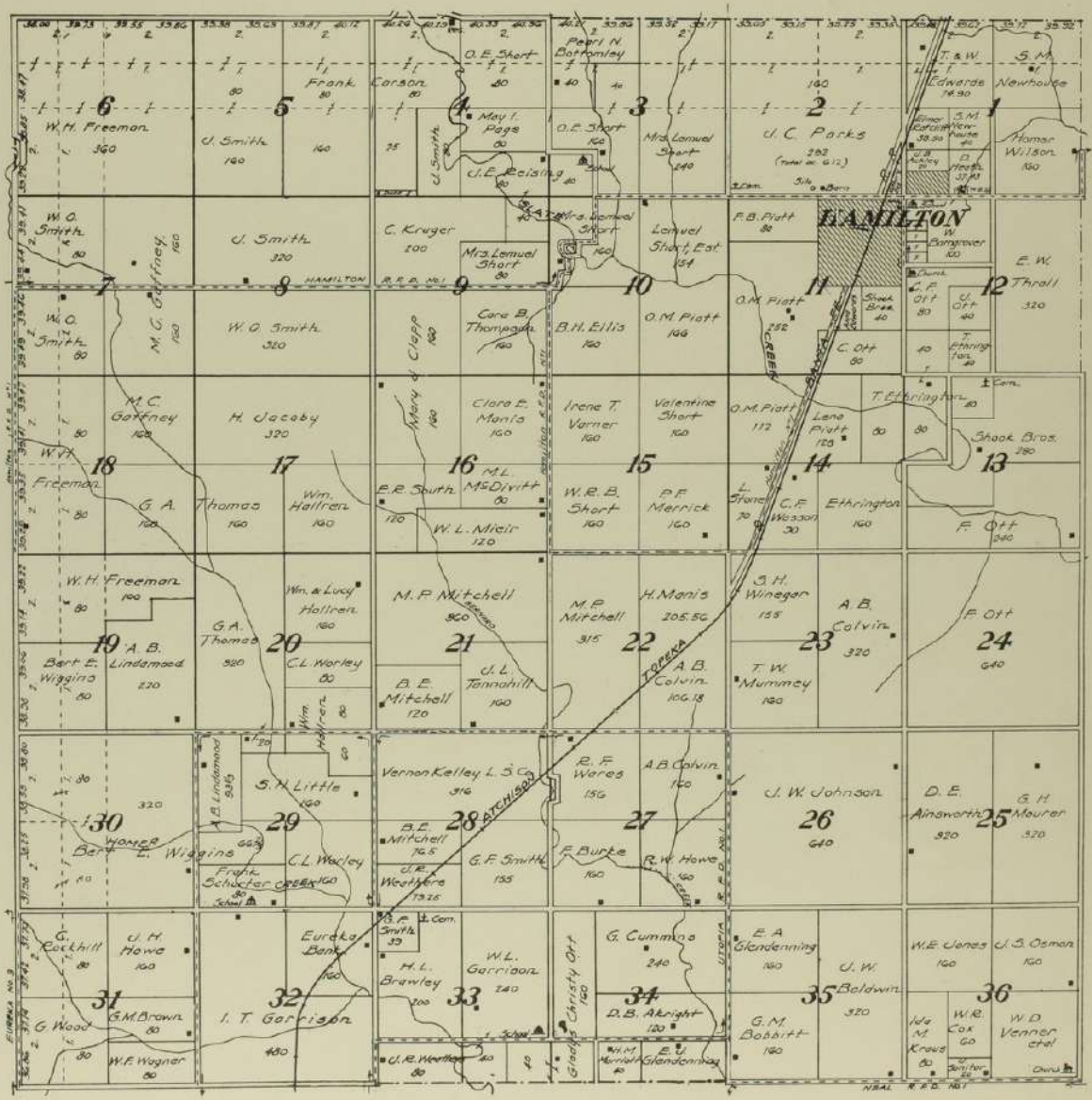






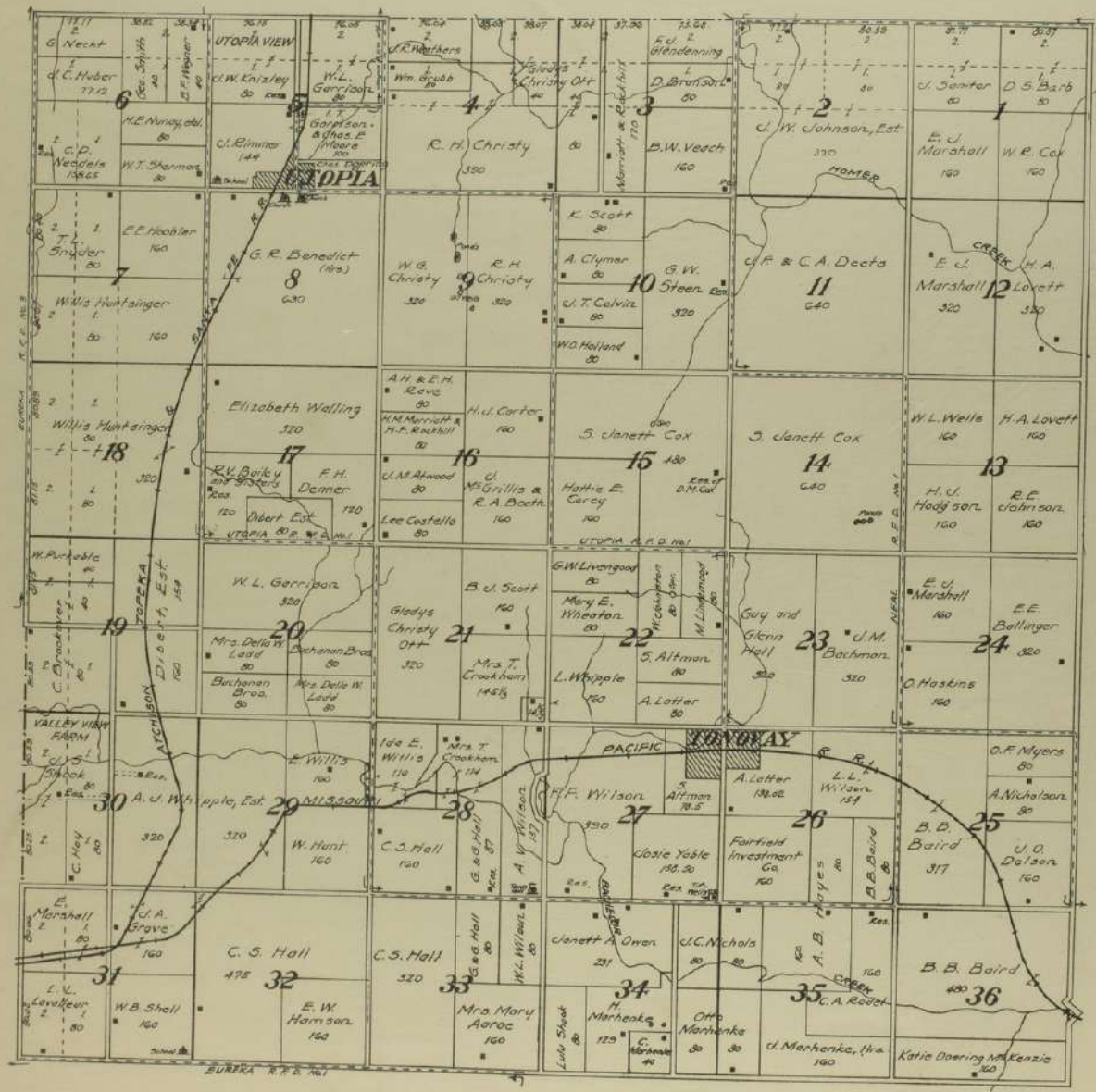



  
**MAP OF**  
**TOWNSHIP 24 S., RANGE 11 E.**  
 OF THE 6th P. M.  
 Scale 1 1/4 inches to 1 mile



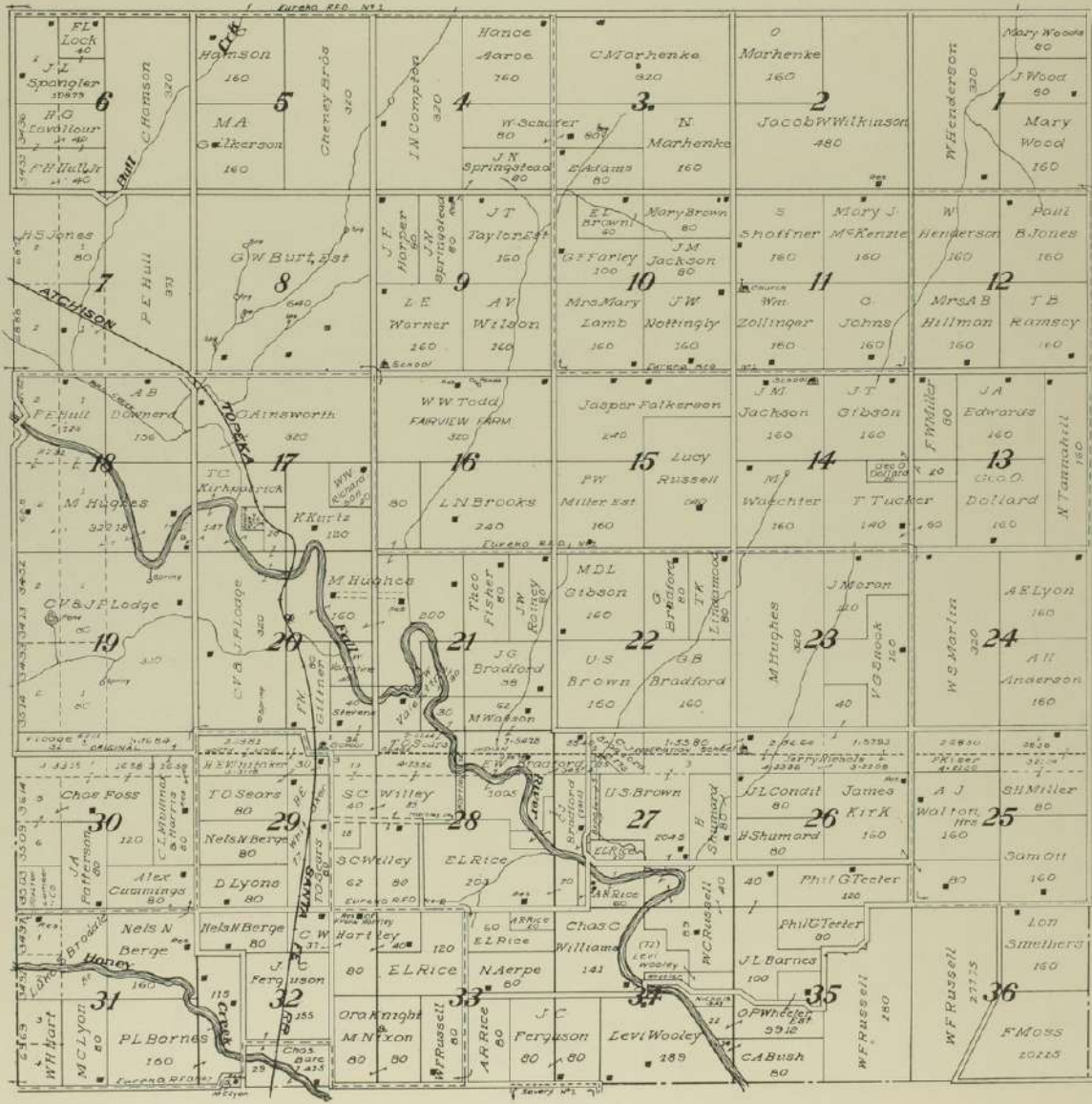


**MAP OF**  
**TOWNSHIP 25 S., RANGE 11 E.**  
 OF THE 6th P. M.  
 Scale 1 3/4 inches to 1 mile

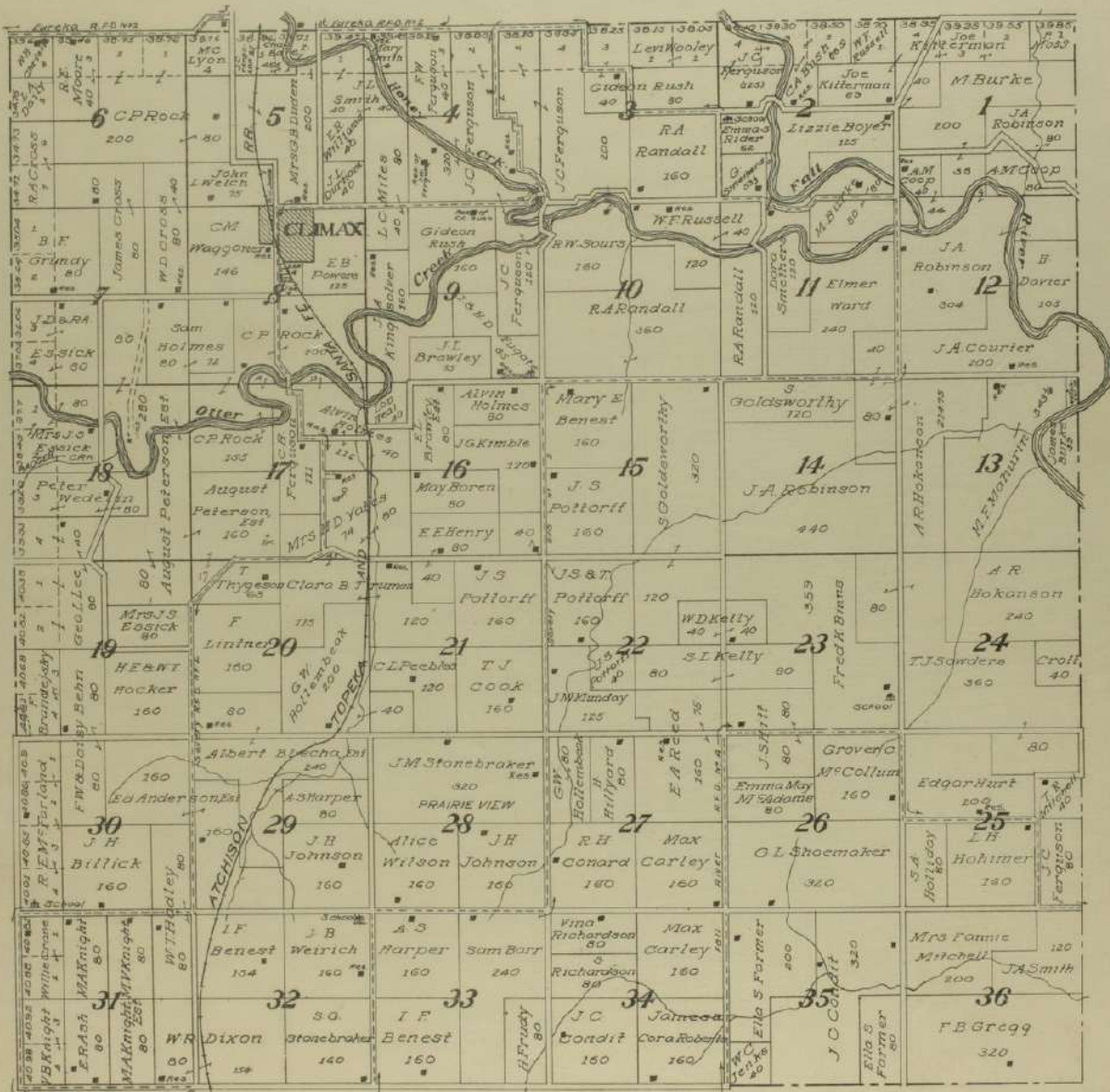




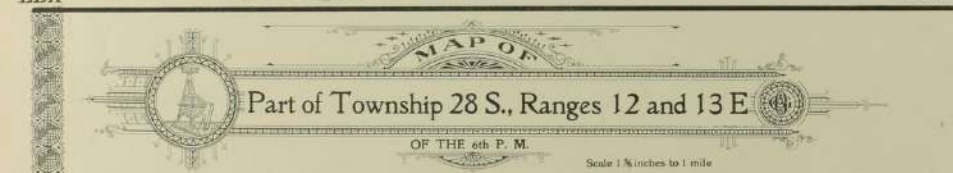
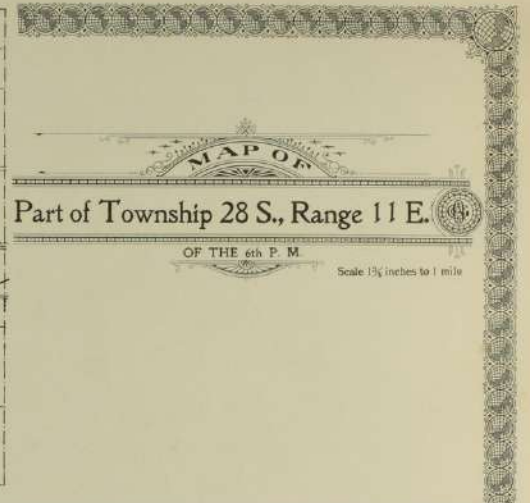
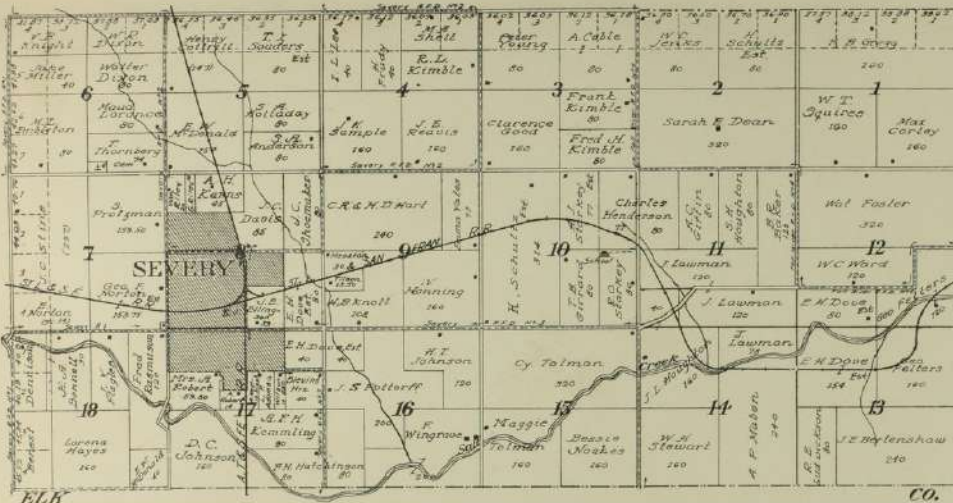
**MAP OF**  
**TOWNSHIP 26 S., RANGE 11 E.**  
 OF THE 6th P. M.  
 Scale 1 1/2 inches to 1 mile









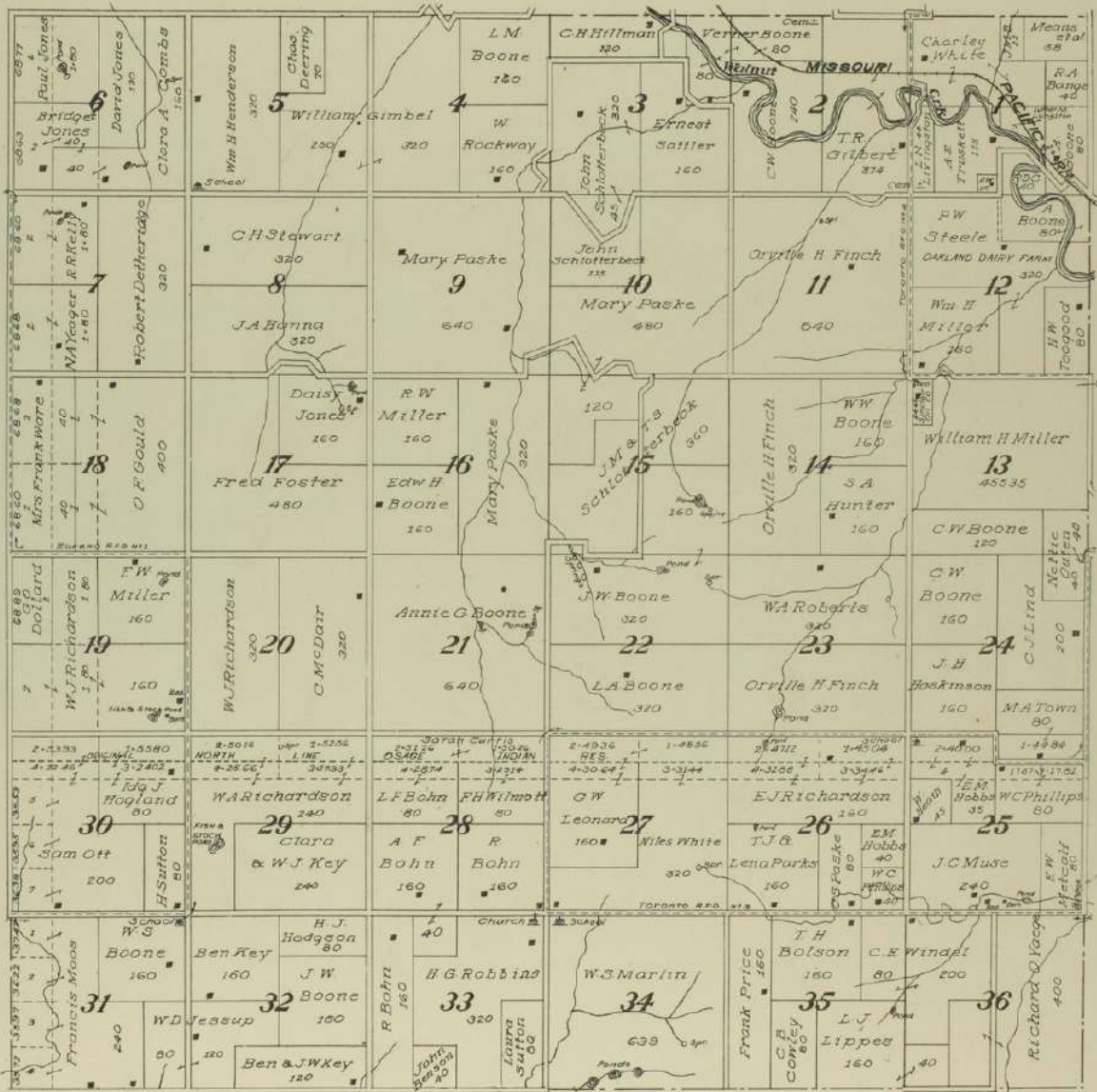




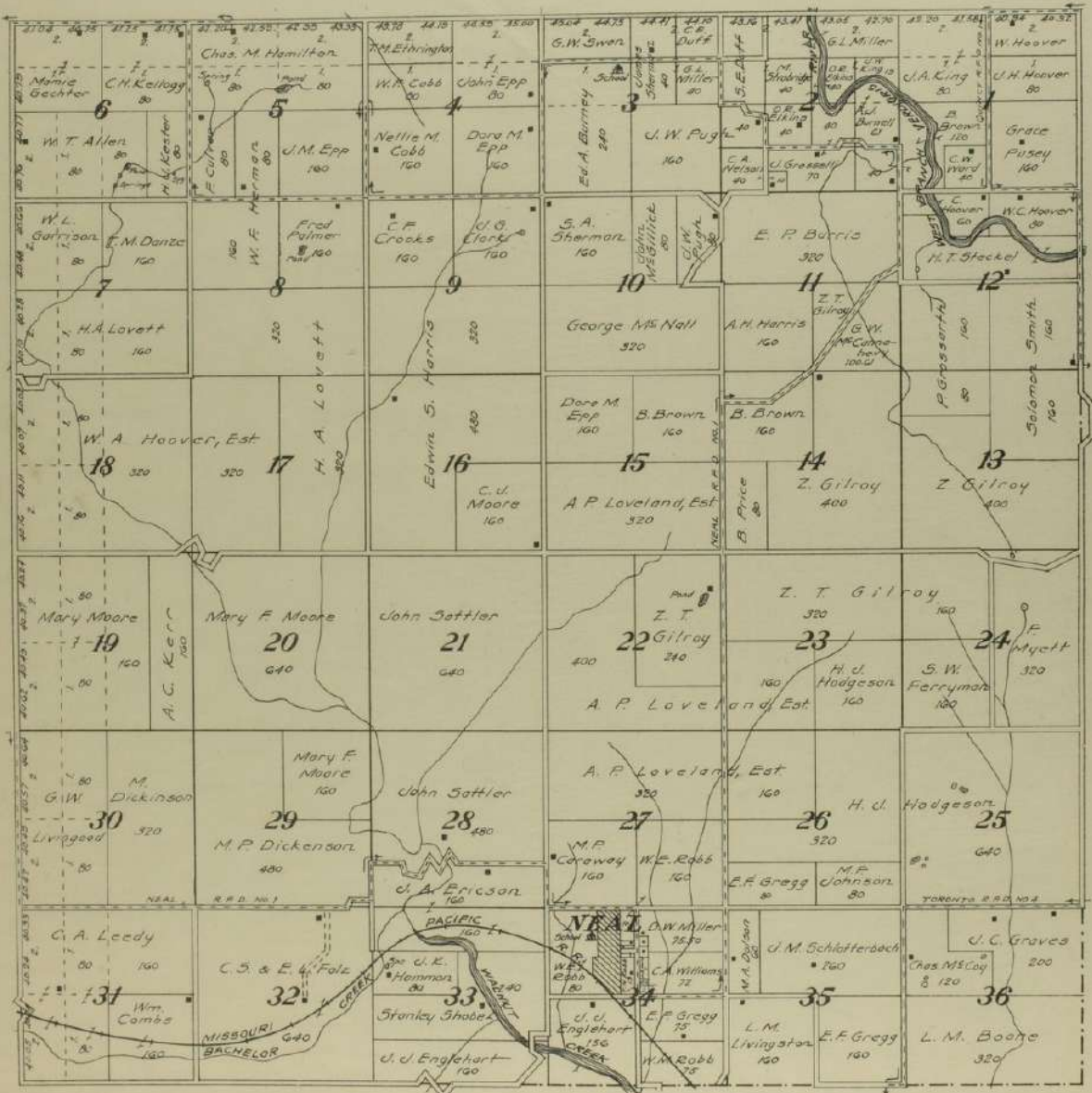




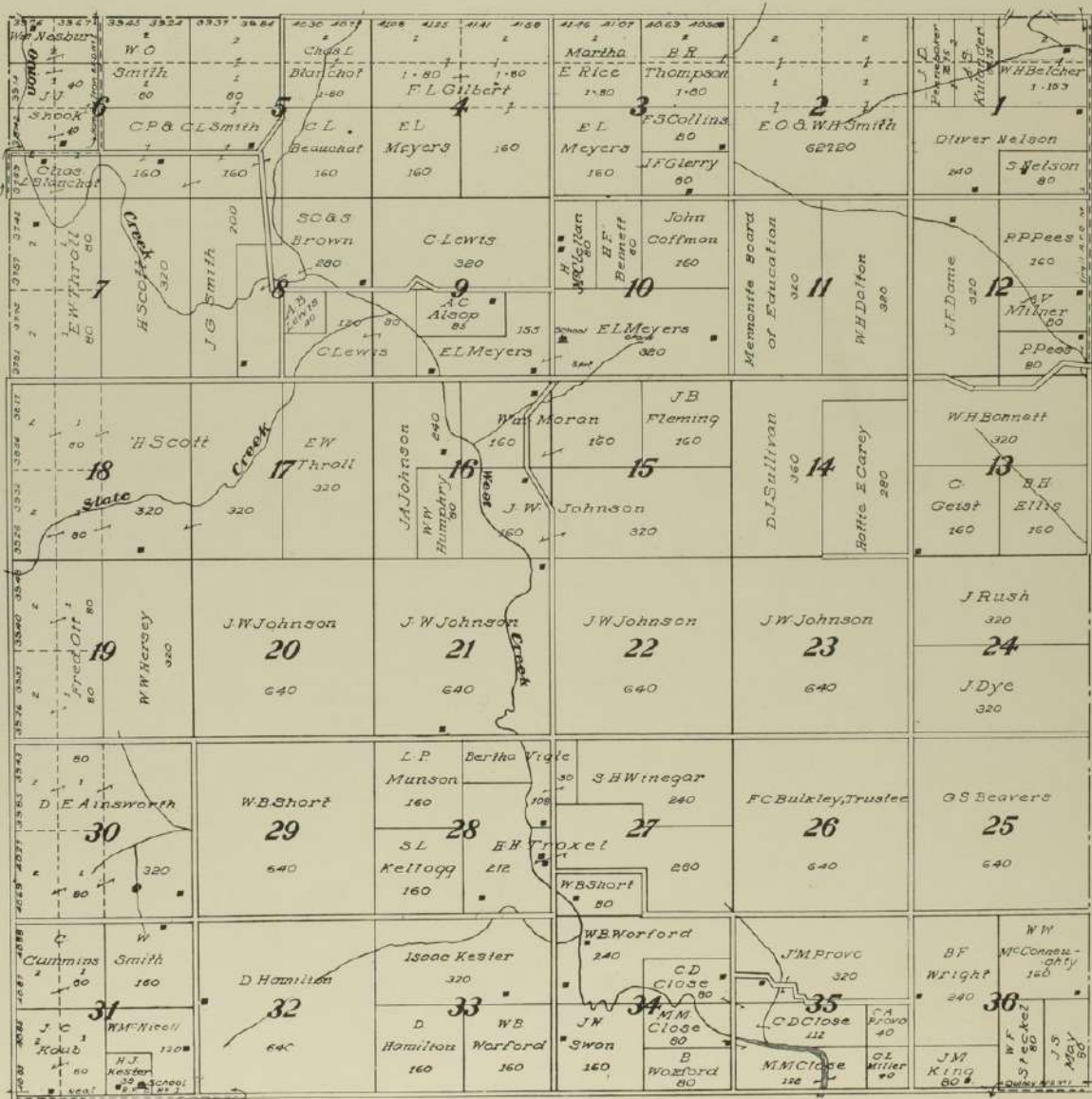

  
**MAP OF**  
**TOWNSHIP 26 S., RANGE 12 E.**  
 OF THE 6th P. M.  
 Scale 1 1/4 inches to 1 mile





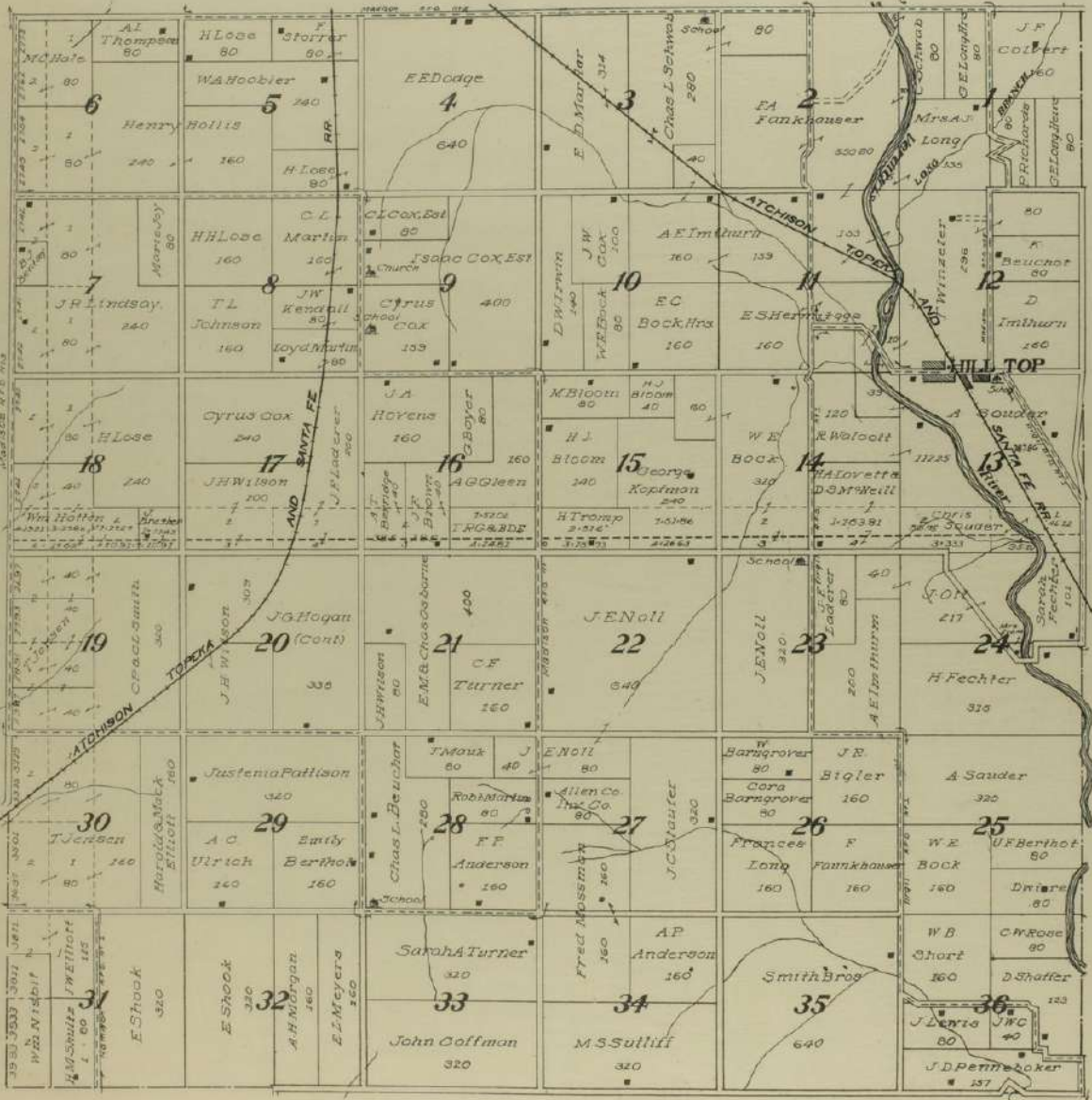




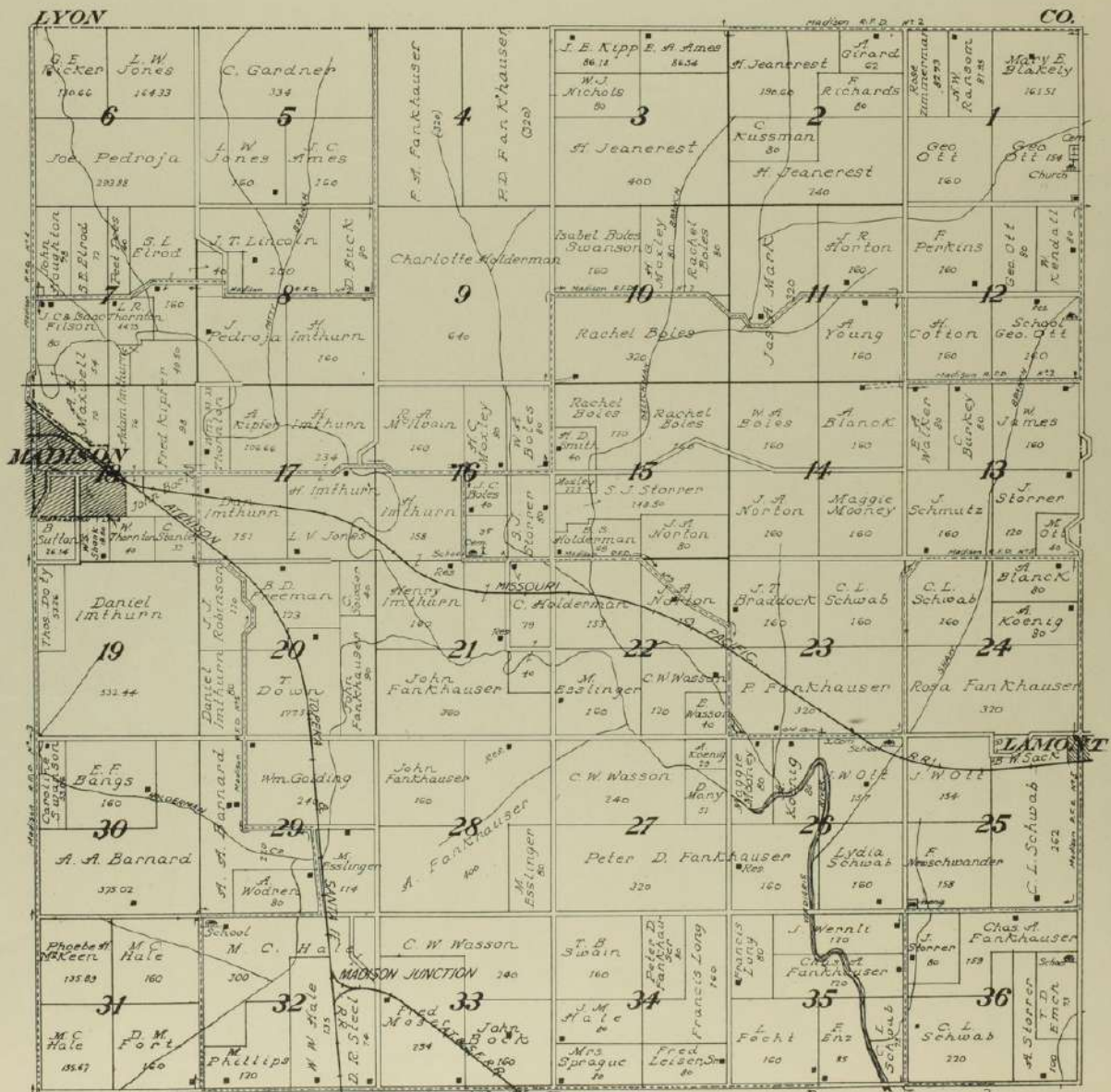




MAP OF  
**TOWNSHIP 23 S., RANGE 12 E.**  
 OF THE 6th P. M.  
 Scale 1 1/4 inches to 1 mile





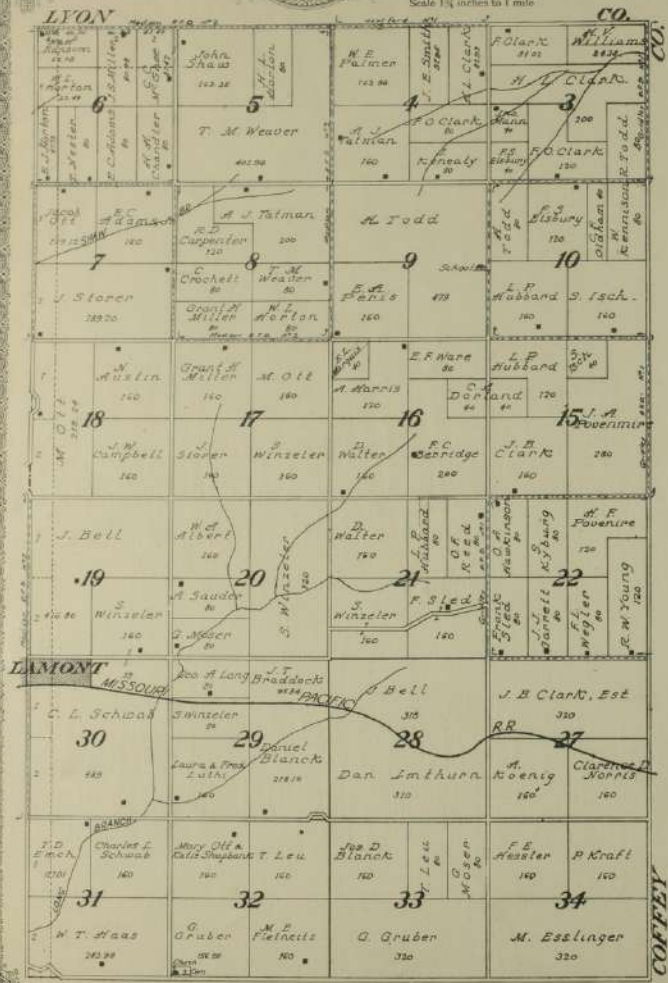




MAP OF  
Part of Township 22 S., Range 13 E.

OF THE 6th P. M.

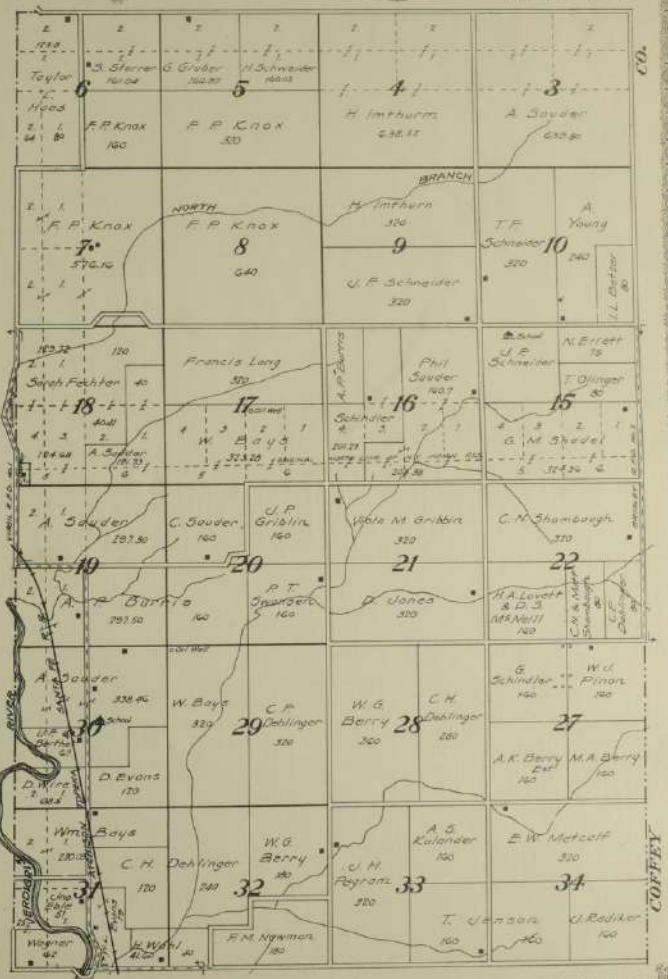
Scale 1 1/4 inches to 1 mile



MAP OF  
Part of Township 23 S., Range 13 E.

OF THE 6th P. M.

Scale 1 1/4 inches to 1 mile

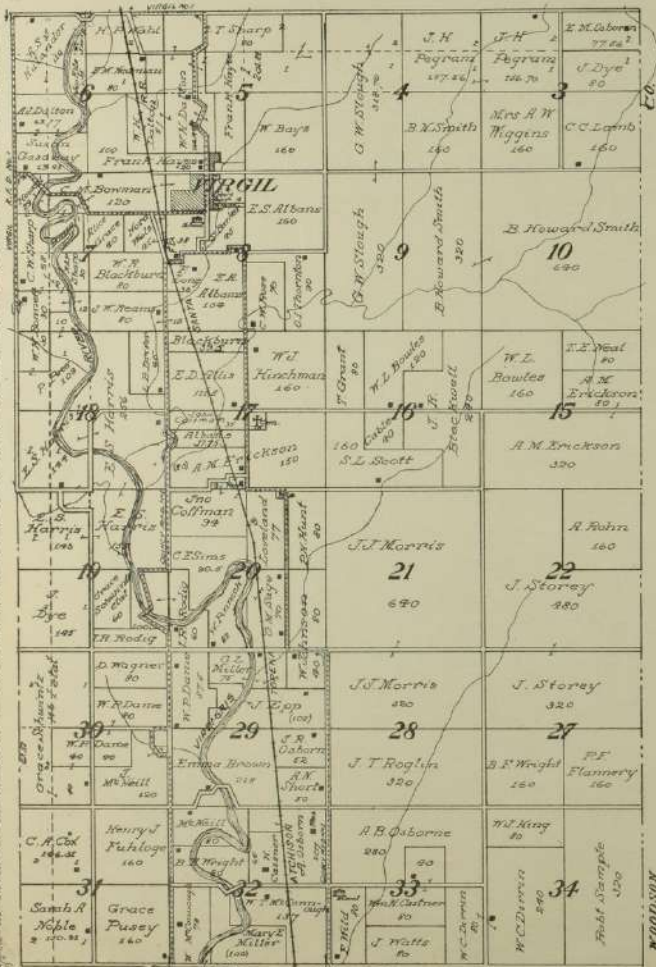




MAP OF  
Part of Township 24 S., Range 13 E.

OF THE 6th P. M.

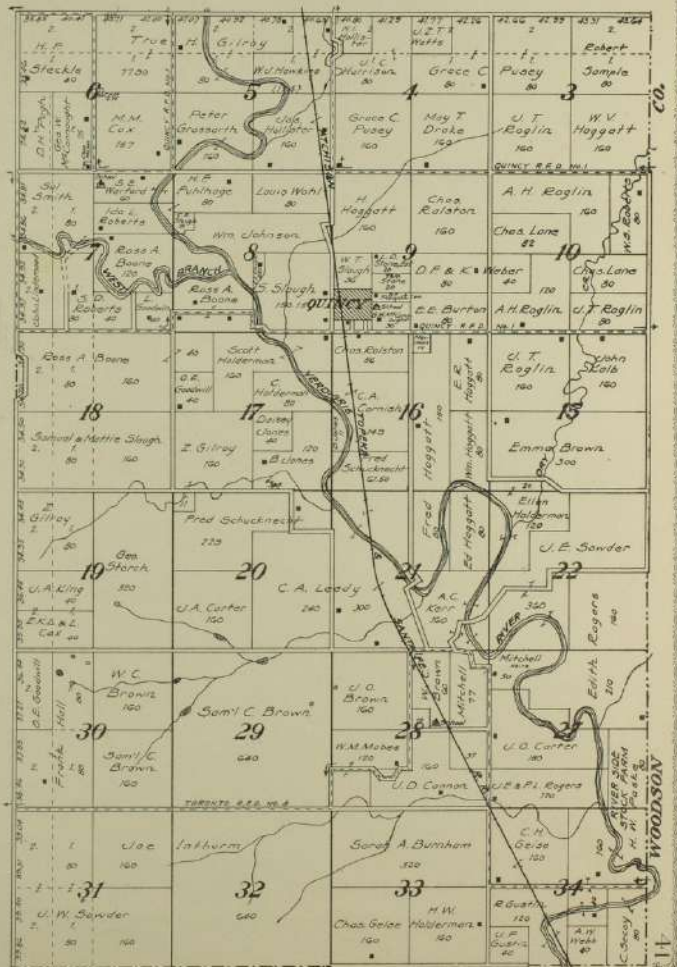
Scale 1 1/2 inches to 1 mile



MAP OF  
Part of Township 25 S., Range 13 E.

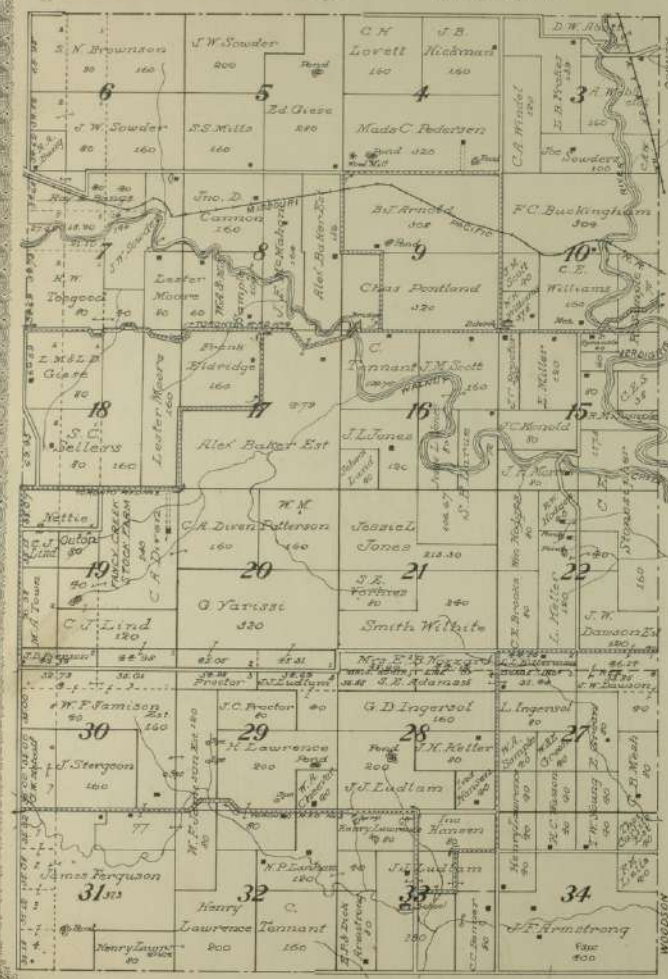
OF THE 6th P. M.

Scale 1 1/2 inches to 1 mile





**MAP OF**  
**Part of Township 26 S., Range 13 E.**  
 OF THE 6th P. M.  
 Scale 1 1/2 inches to 1 mile



**MAP OF**  
**Part of Township 27 S., Range 13 E.**  
 OF THE 6th P. M.  
 Scale 1 1/2 inches to 1 mile

