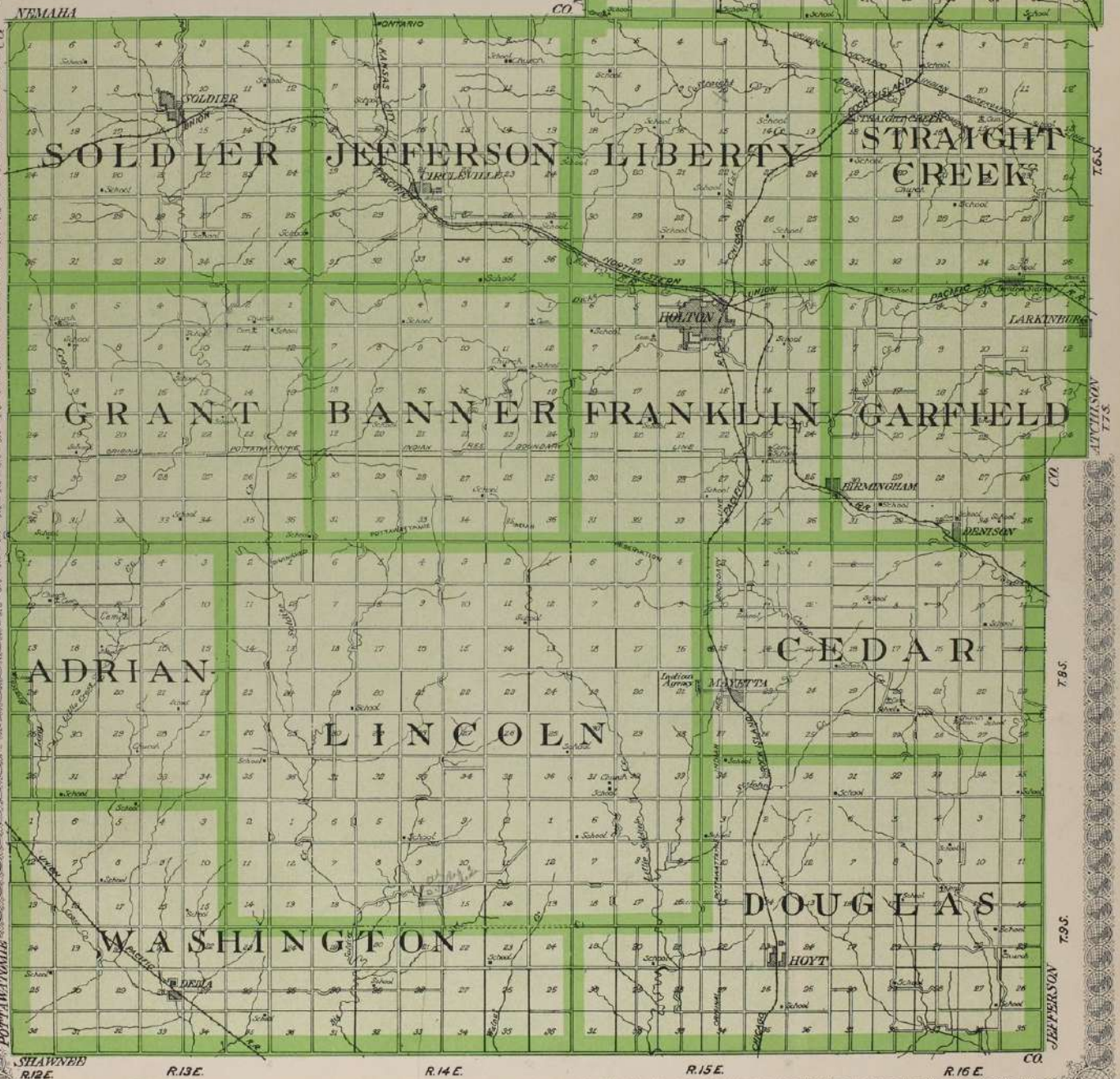


OUTLINE MAP OF JACKSON COUNTY KANSAS

Copyright 1921 by Geo. A. Ogble & Co.

Scale 1/2 inch to 1 mile



Rockau

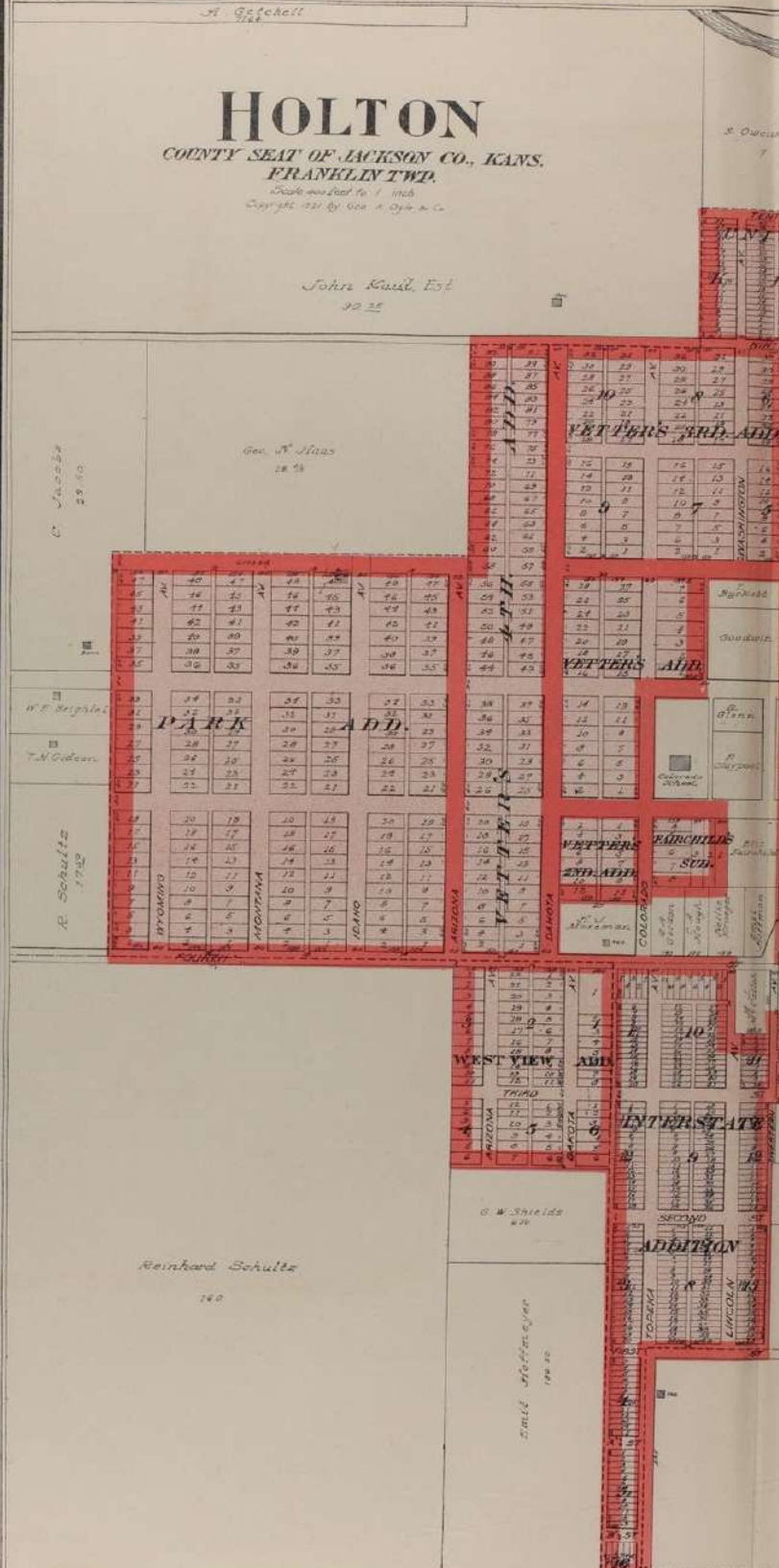
DELIA

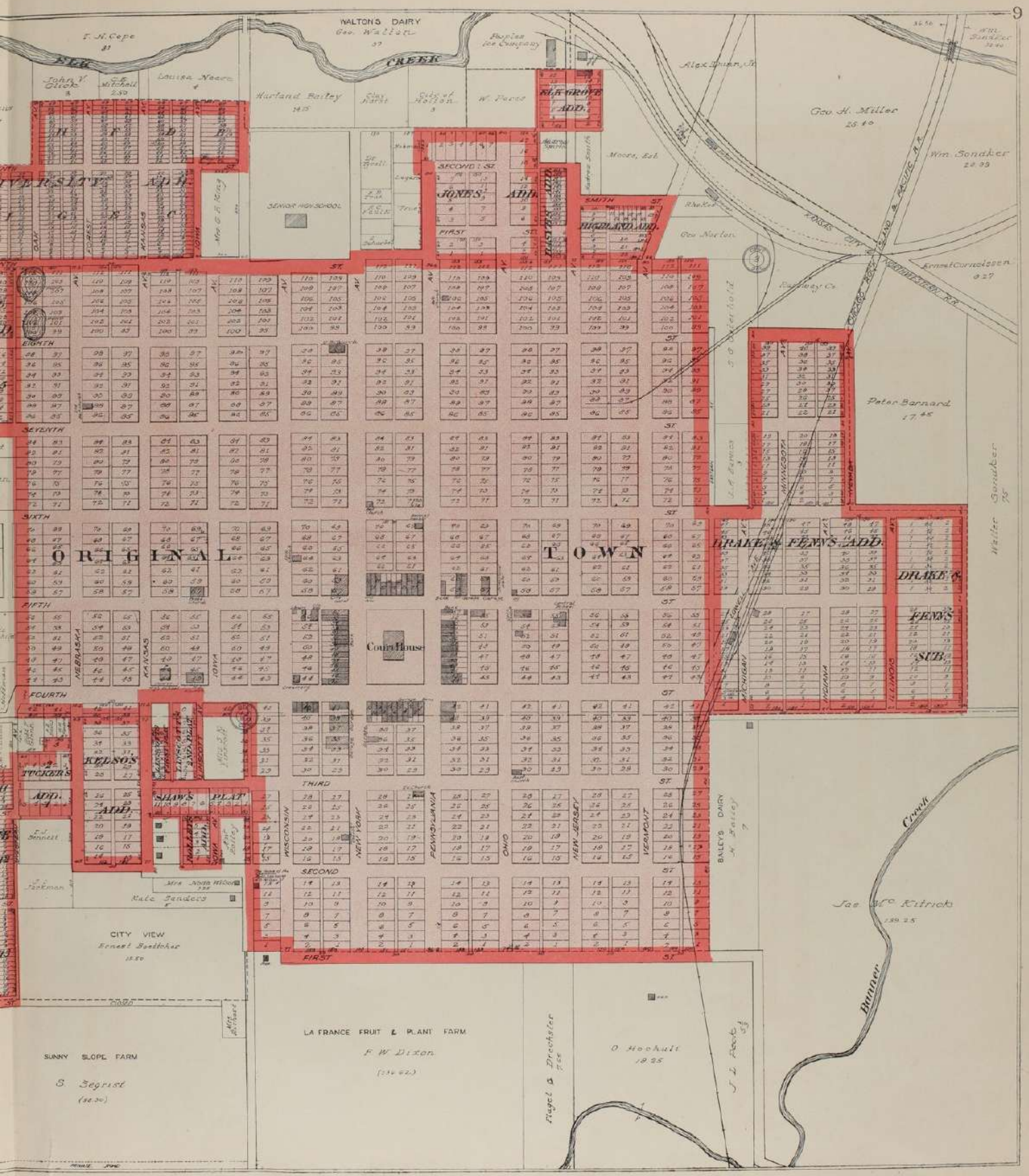
WASHINGTON TWP
Scale 400ft = 1 inch



HOLTON

COUNTY SEAT OF JACKSON CO., KANS.
FRANKLIN TWP.
Scale one inch to 1 mile
Copyright 1911 by Geo. A. Gifford & Co.





WALTONS DAIRY
Geo. Walton
57

Geo. H. Miller
25 40

Wm. Sander
24 33

Peter Barnard
17 45

Walter
Gardner
75

Joe W. Kitchin
18 25

LA FRANCE FRUIT & PLANT FARM
F. W. Dixon
(214 92)

O. Hookitt
10 25

S. Segrist
(30 30)

CITY VIEW
Eneest Bosthor
18 20

Mrs. Anna Moore
Kate Sanders

SLAWS
PLAT

KEDNOS
ADD.

NEBRASKA
KANSAS

ORIGINAL

TOWN

DRAKE'S FEW'S ADD.

DRAKE'S

FEW'S

NEBRASKA
ILLINOIS

NEW JERSEY
NEW YORK

OHIO
NEW JERSEY

MISSOURI
ILLINOIS

MISSOURI
ILLINOIS

MISSOURI
ILLINOIS

MISSOURI
ILLINOIS

MISSOURI
ILLINOIS

MISSOURI
ILLINOIS

MISSOURI
ILLINOIS

MISSOURI
ILLINOIS

MISSOURI
ILLINOIS

MISSOURI
ILLINOIS

MISSOURI
ILLINOIS

F. H. Cape
John V. Dicks
Michael
Louisa Nease

Hurland Bailey
415

City of
Holliston

W. Paces
KIRK GROVE
ADD.

Moore, Est.

Geo. Norton

Geo. H. Miller
25 40

Wm. Sander
24 33

SENIOR HIGH SCHOOL

JONES
ADD.

SMITH
ST.

HIGHLAND
ADD.

Moore, Est.

Geo. Norton

Wm. Sander
24 33

EIGHTH

SEVENTH

SIXTH

FIFTH

FOURTH

THIRD

SECOND

FIRST

SENIOR HIGH SCHOOL

JONES
ADD.

SMITH
ST.

HIGHLAND
ADD.

Moore, Est.

Geo. Norton

Wm. Sander
24 33

EIGHTH

SEVENTH

SIXTH

FIFTH

FOURTH

THIRD

SECOND

FIRST

SENIOR HIGH SCHOOL

JONES
ADD.

SMITH
ST.

HIGHLAND
ADD.

Moore, Est.

Geo. Norton

Wm. Sander
24 33

EIGHTH

SEVENTH

SIXTH

FIFTH

FOURTH

THIRD

SECOND

FIRST

SENIOR HIGH SCHOOL

JONES
ADD.

SMITH
ST.

HIGHLAND
ADD.

Moore, Est.

Geo. Norton

Wm. Sander
24 33

EIGHTH

SEVENTH

SIXTH

FIFTH

FOURTH

THIRD

SECOND

FIRST

SENIOR HIGH SCHOOL

JONES
ADD.

SMITH
ST.

HIGHLAND
ADD.

Moore, Est.

Geo. Norton

Wm. Sander
24 33

EIGHTH

SEVENTH

SIXTH

FIFTH

FOURTH

THIRD

SECOND

FIRST

SENIOR HIGH SCHOOL

JONES
ADD.

SMITH
ST.

HIGHLAND
ADD.

Moore, Est.

Geo. Norton

Wm. Sander
24 33

EIGHTH

SEVENTH

SIXTH

FIFTH

FOURTH

THIRD

SECOND

FIRST

SENIOR HIGH SCHOOL

JONES
ADD.

SMITH
ST.

HIGHLAND
ADD.

Moore, Est.

Geo. Norton

Wm. Sander
24 33

EIGHTH

SEVENTH

SIXTH

FIFTH

FOURTH

THIRD

SECOND

FIRST

SENIOR HIGH SCHOOL

JONES
ADD.

SMITH
ST.

HIGHLAND
ADD.

Moore, Est.

Geo. Norton

Wm. Sander
24 33

EIGHTH

SEVENTH

SIXTH

FIFTH

FOURTH

THIRD

SECOND

FIRST

SENIOR HIGH SCHOOL

JONES
ADD.

SMITH
ST.

HIGHLAND
ADD.

Moore, Est.

Geo. Norton

Wm. Sander
24 33

EIGHTH

SEVENTH

SIXTH

FIFTH

FOURTH

THIRD

SECOND

FIRST

SENIOR HIGH SCHOOL

JONES
ADD.

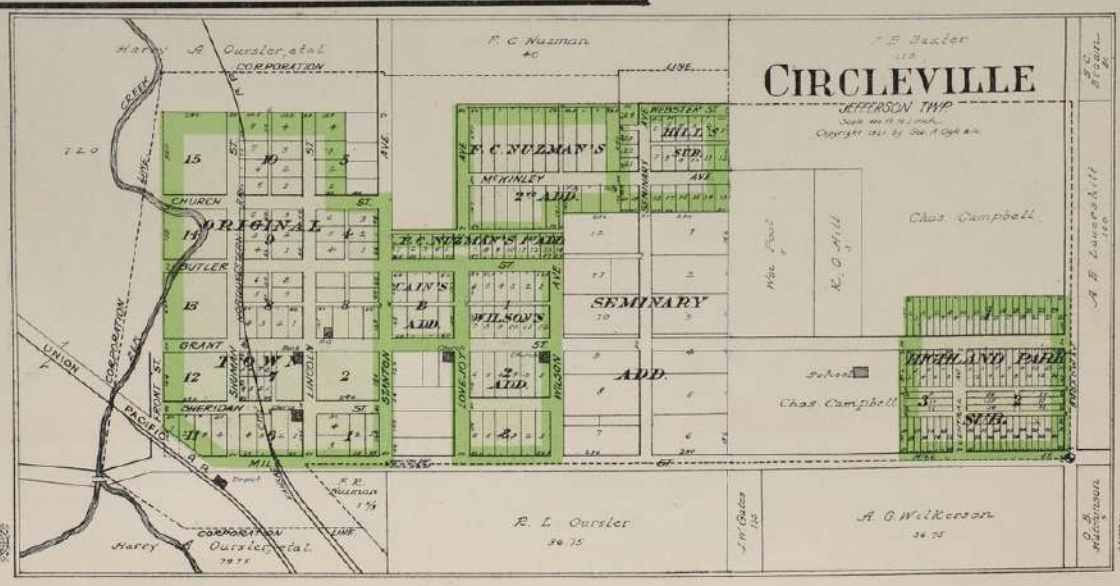
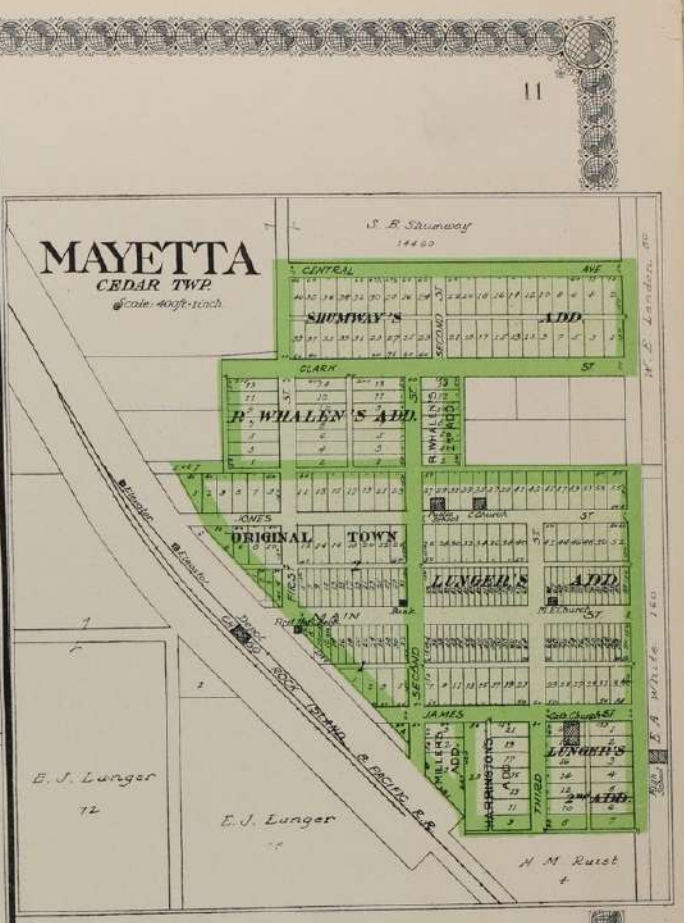
SMITH
ST.

HIGHLAND
ADD.

Moore, Est.

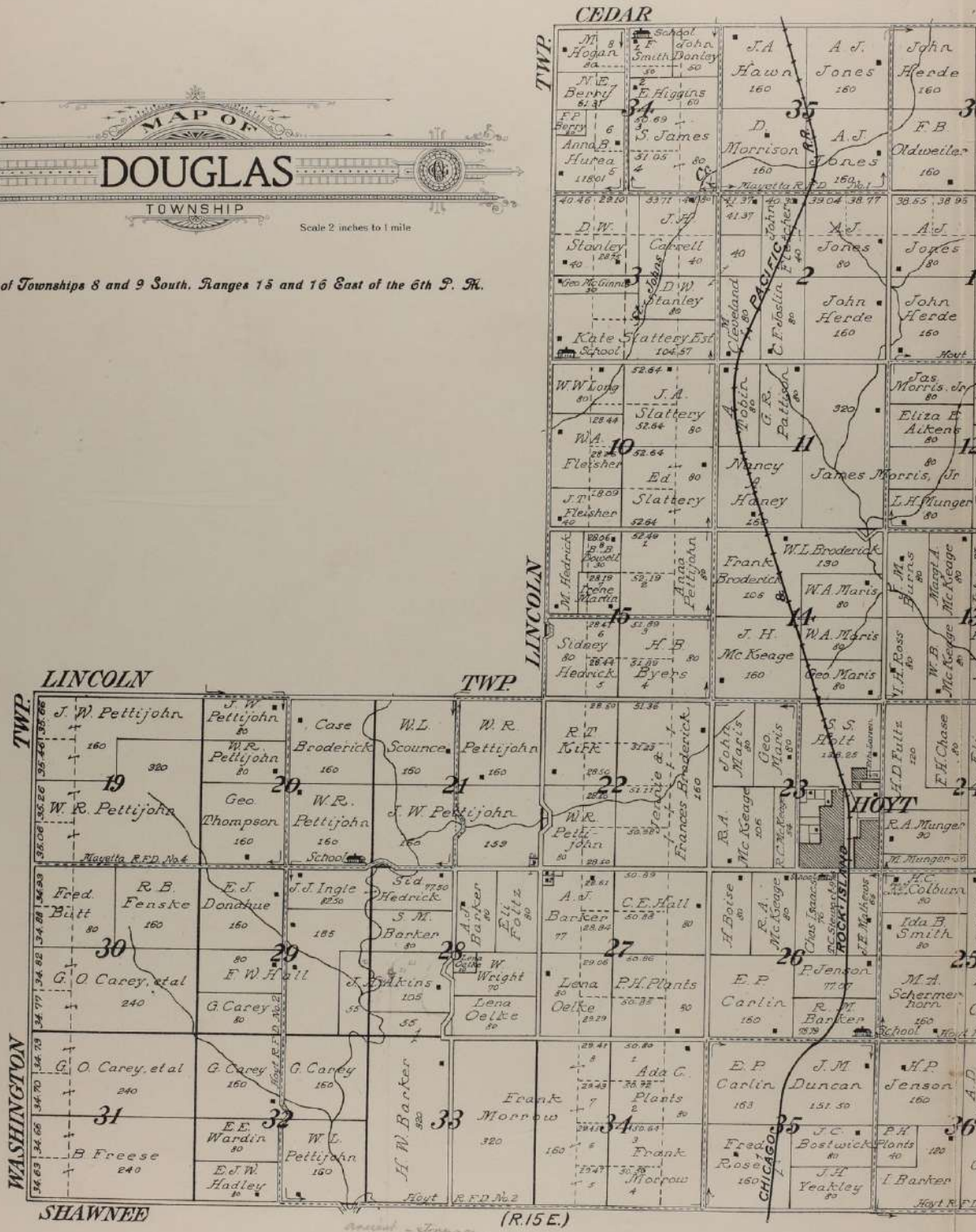
Geo. Norton

Wm. Sander
24 33

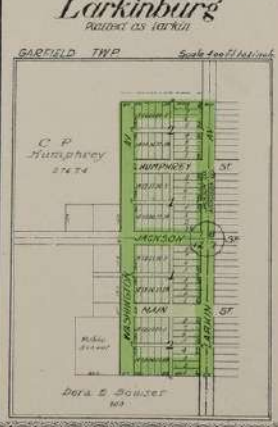
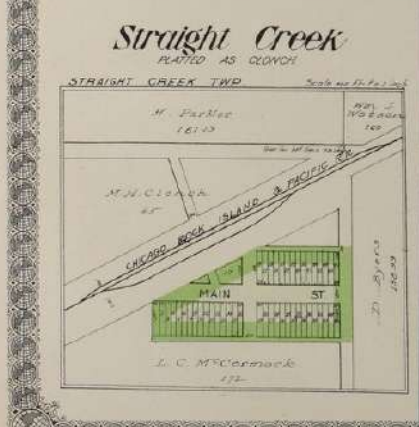
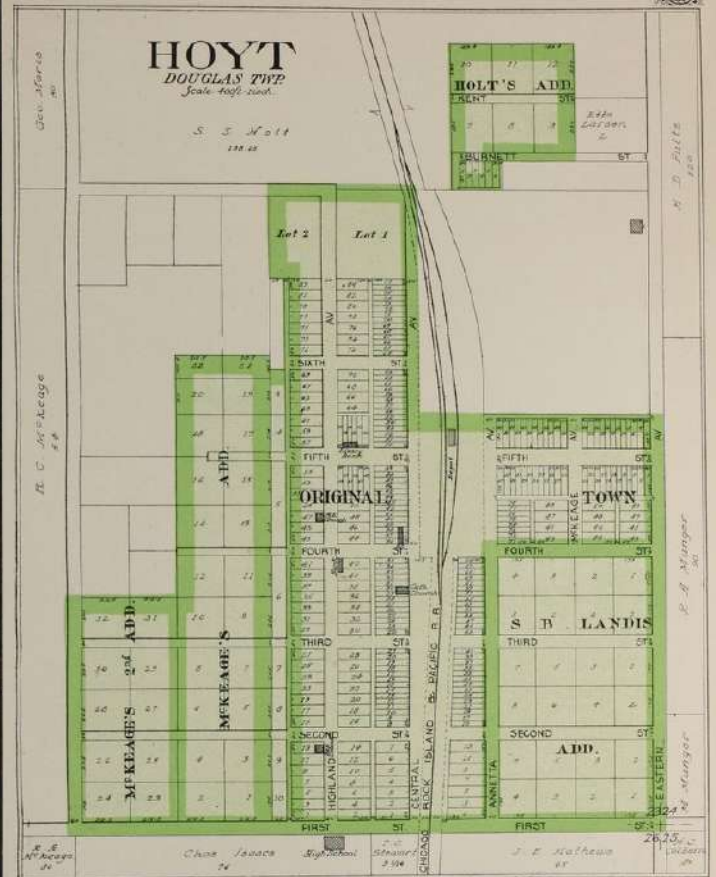
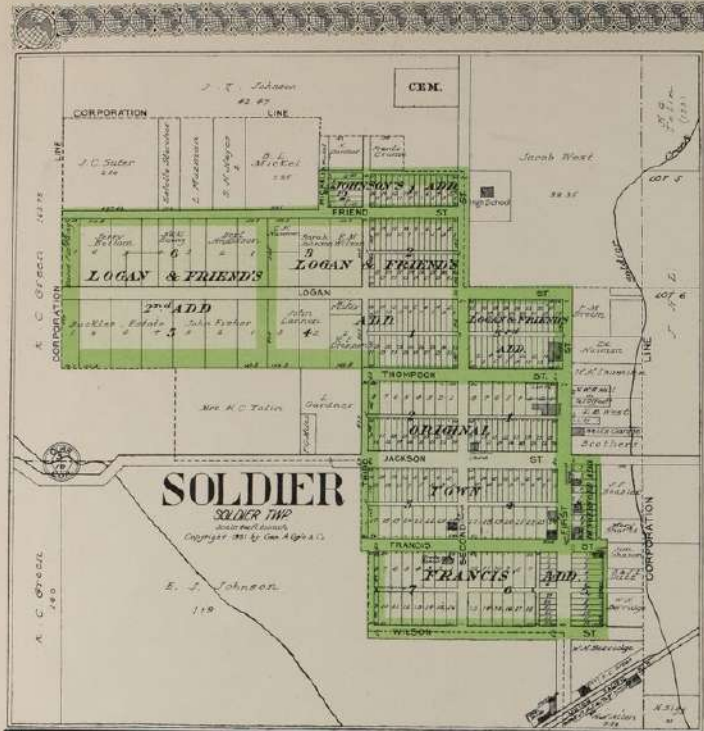




Part of Townships 8 and 9 South, Ranges 15 and 16 East of the 6th P. M.



(R. 15 E.)
 road - bridge -
 village site here - H. J. Adams
 1917

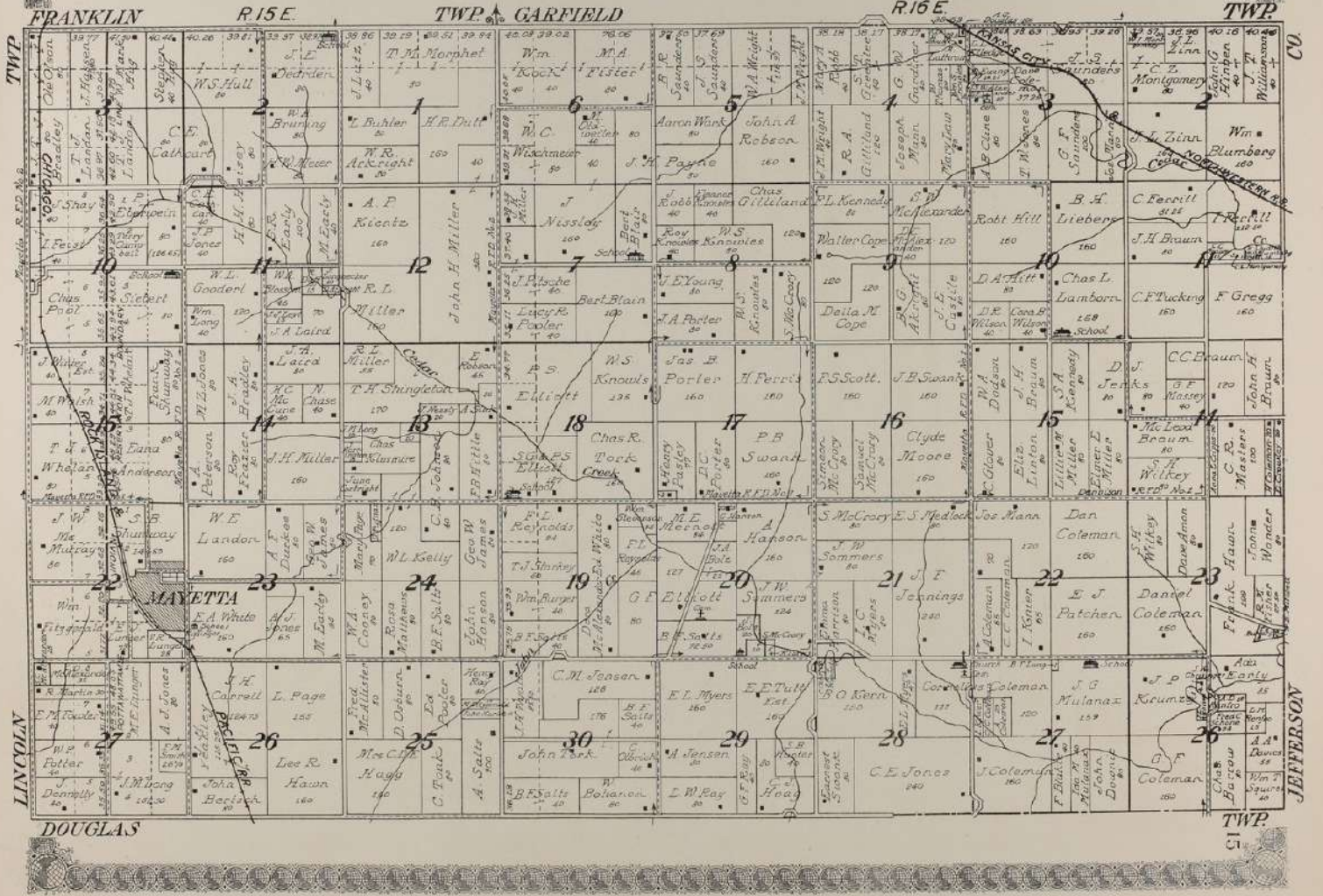




MAP OF CEDAR TOWNSHIP

 Scale 2 inches to 1 mile

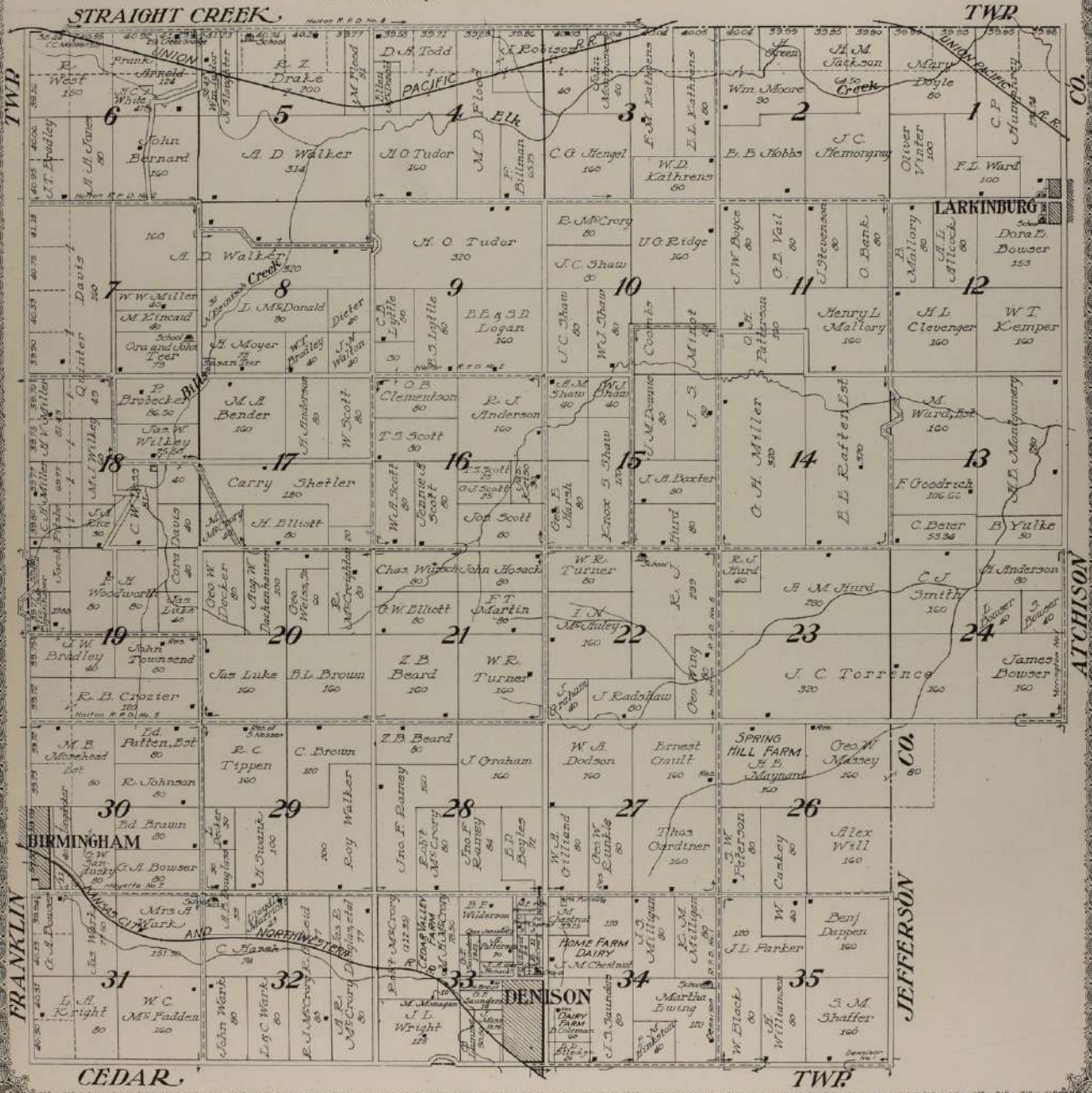
Part of Township 8 South, Ranges 15 and 16 East of the 6th P.M.



MAP OF
GARFIELD
TOWNSHIP

Scale 2 inches to 1 mile

Part of Township 7 South, Range 16 East of the 6th P. M.



FRANKLIN

ATCHISON

JEFFERSON

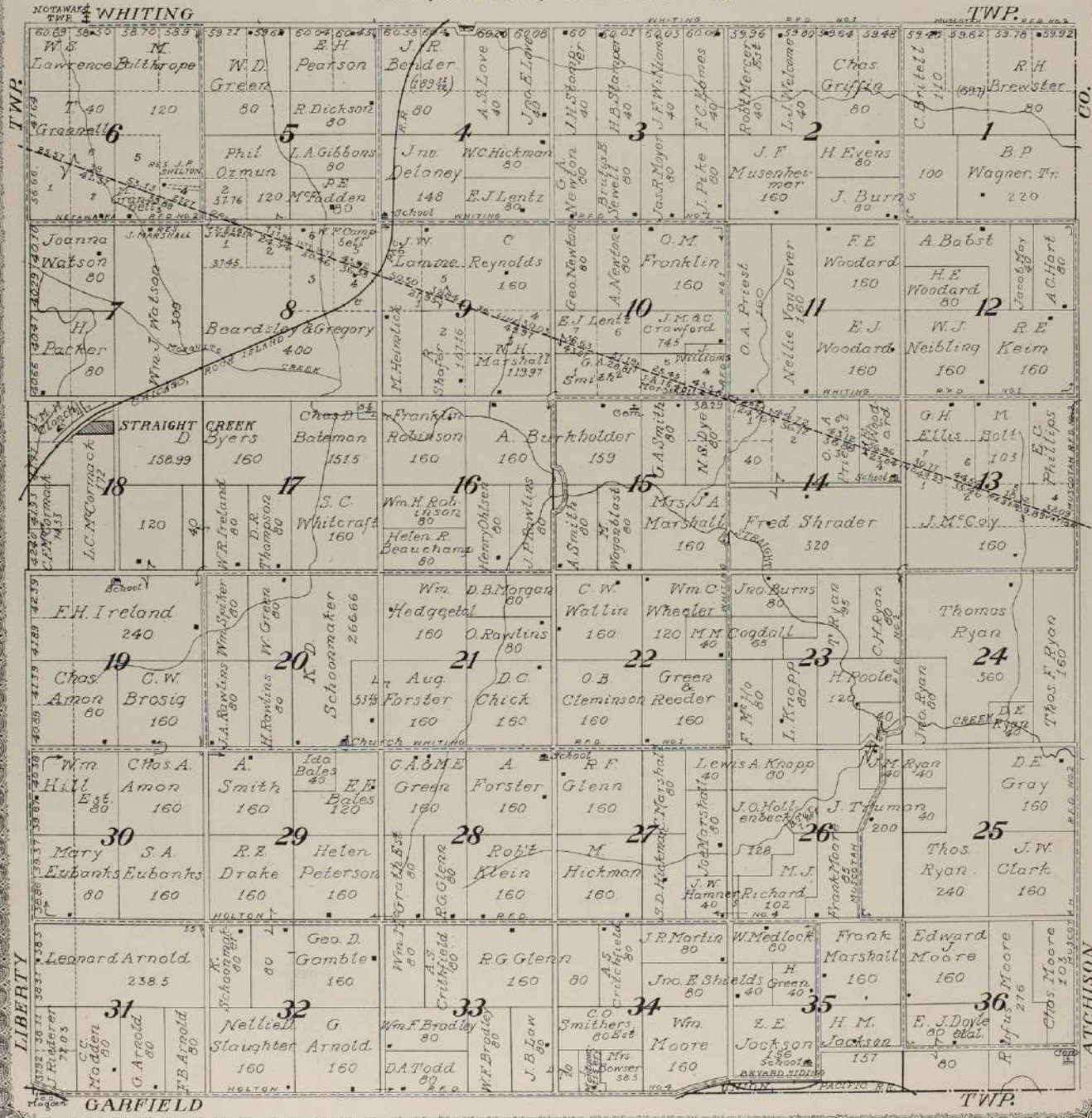
CEDAR

TWP

MAP OF
STRAIGHT CREEK
 TOWNSHIP

Scale 2 inches to 1 mile

Township 6 South, Range 16 East of the 6th P. M.



TWP.

CO.

LIBERTY

ATCHISON

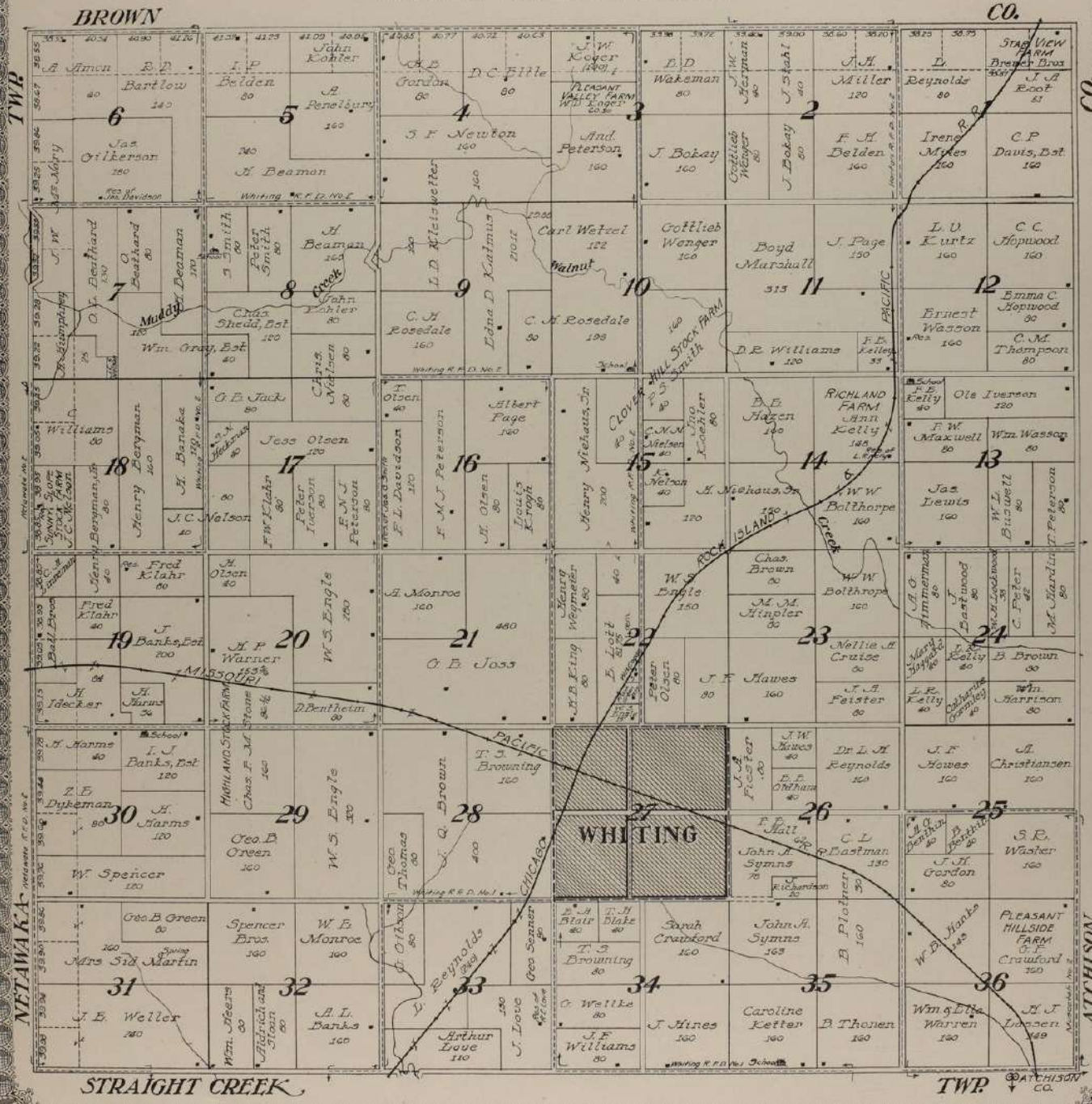
GARFIELD

TWP.



MAP OF
WHITING
 TOWNSHIP
 Scale 2 inches to 1 mile

Township 5 South, Range 16 East of the 6th P. M.



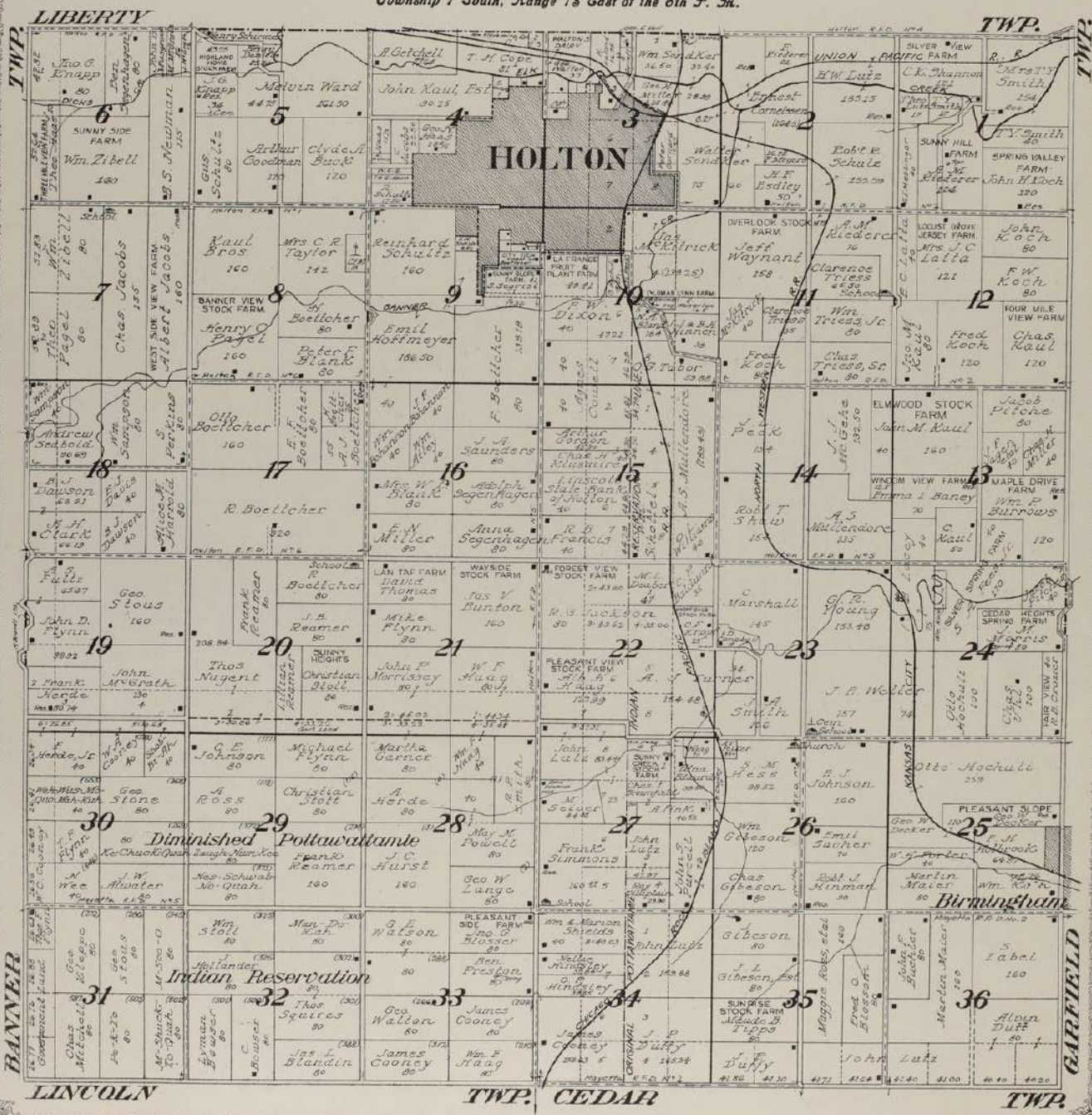
STRAIGHT CREEK

TWP. ATCHISON CO.



MAP OF
FRANKLIN
TOWNSHIP
 Scale 2 inches to 1 mile

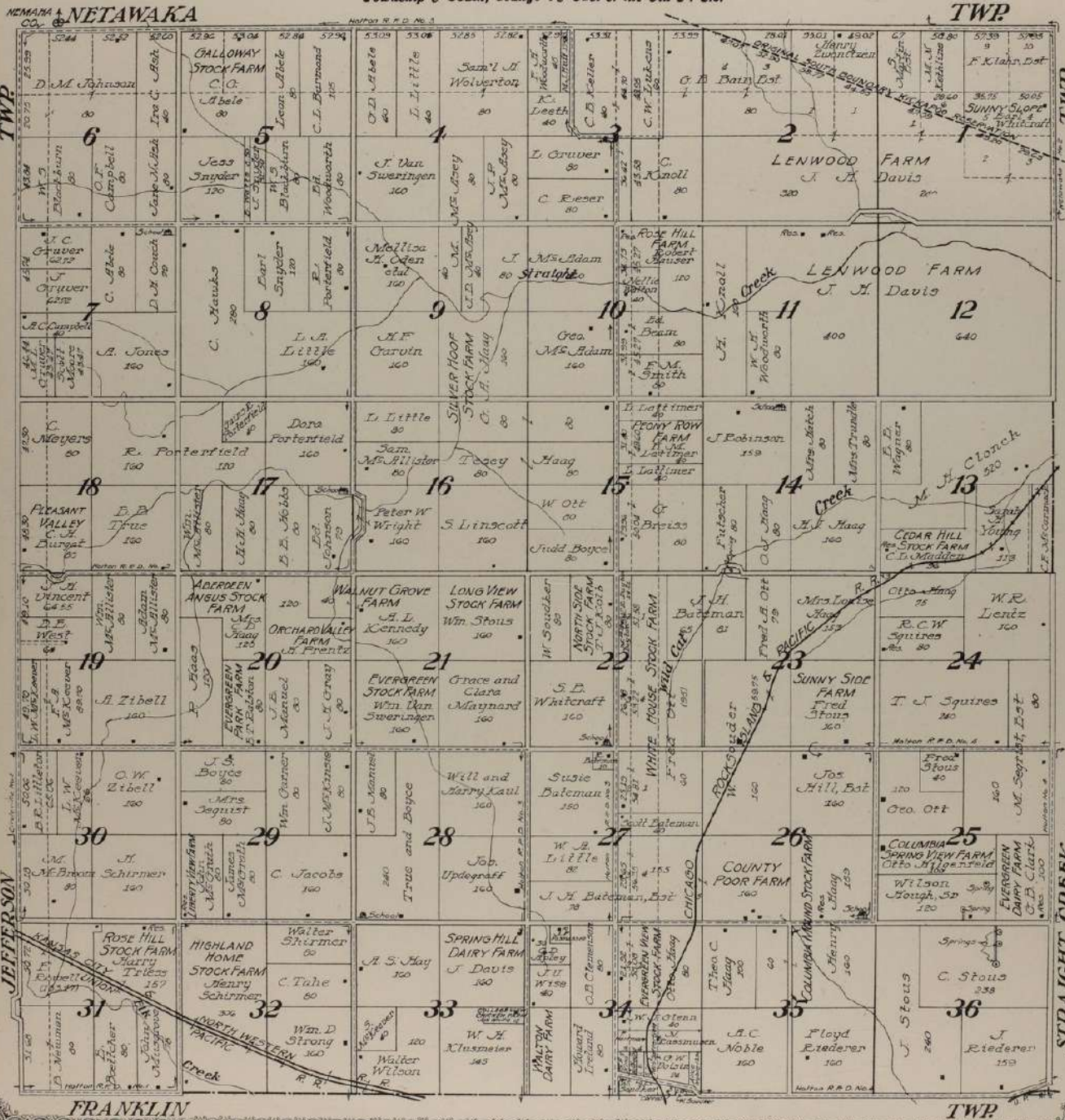
Township 7 South, Range 16 East of the 6th P. M.



MAP OF LIBERTY TOWNSHIP

 Scale 2 inches to 1 mile

Township 6 South, Range 15 East of the 6th P. M.



TWP

TWP

JEFFERSON

FRANKLIN

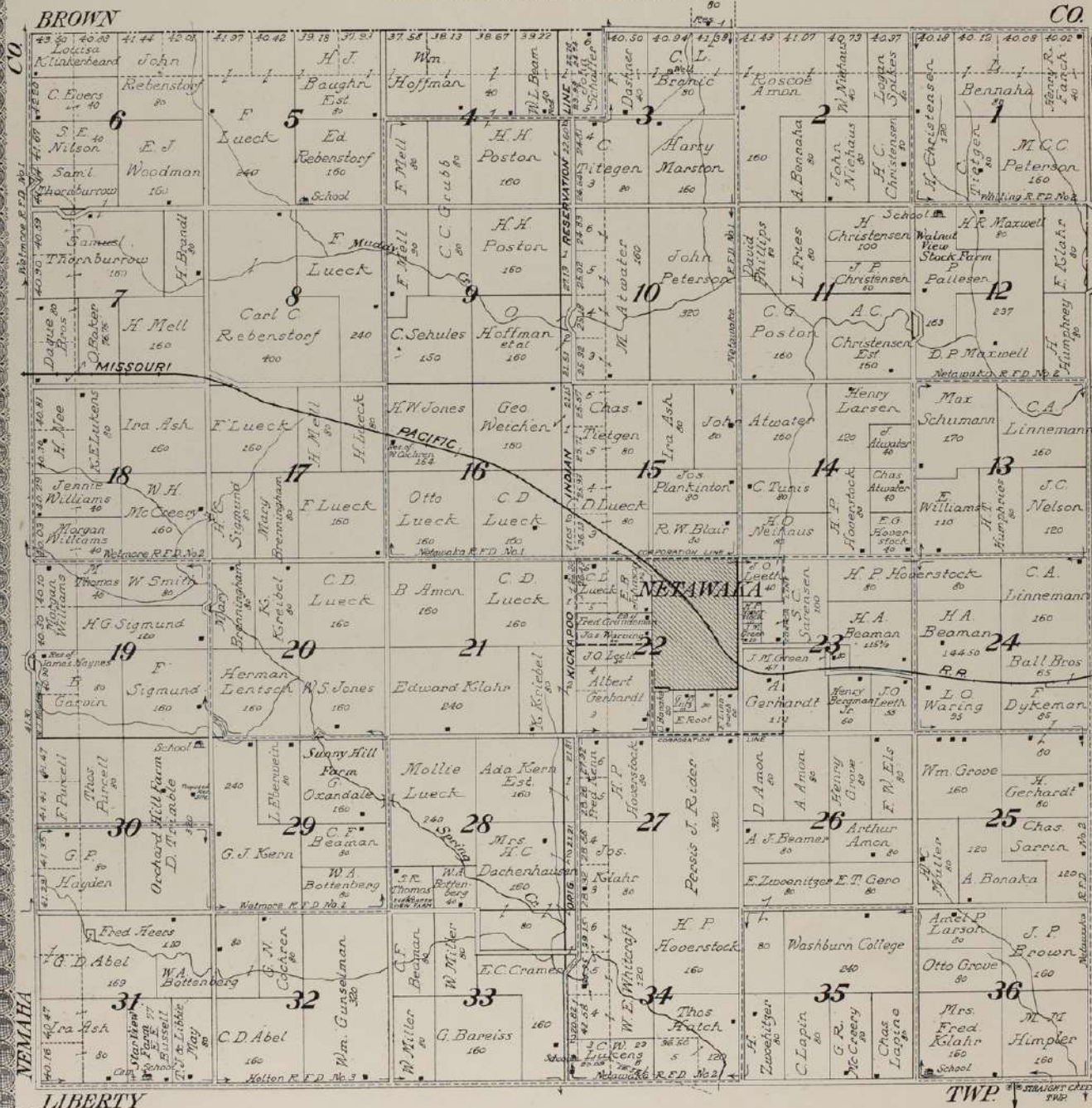
TWP

STRAIGHT CREEK

MAP OF NETAWAKA TOWNSHIP

Scale 2 inches to 1 mile

Township 5 South, Range 15 East of the 6th P. M.



BROWN CO. MISSOURI TWP. OF WHITING

LIBERTY

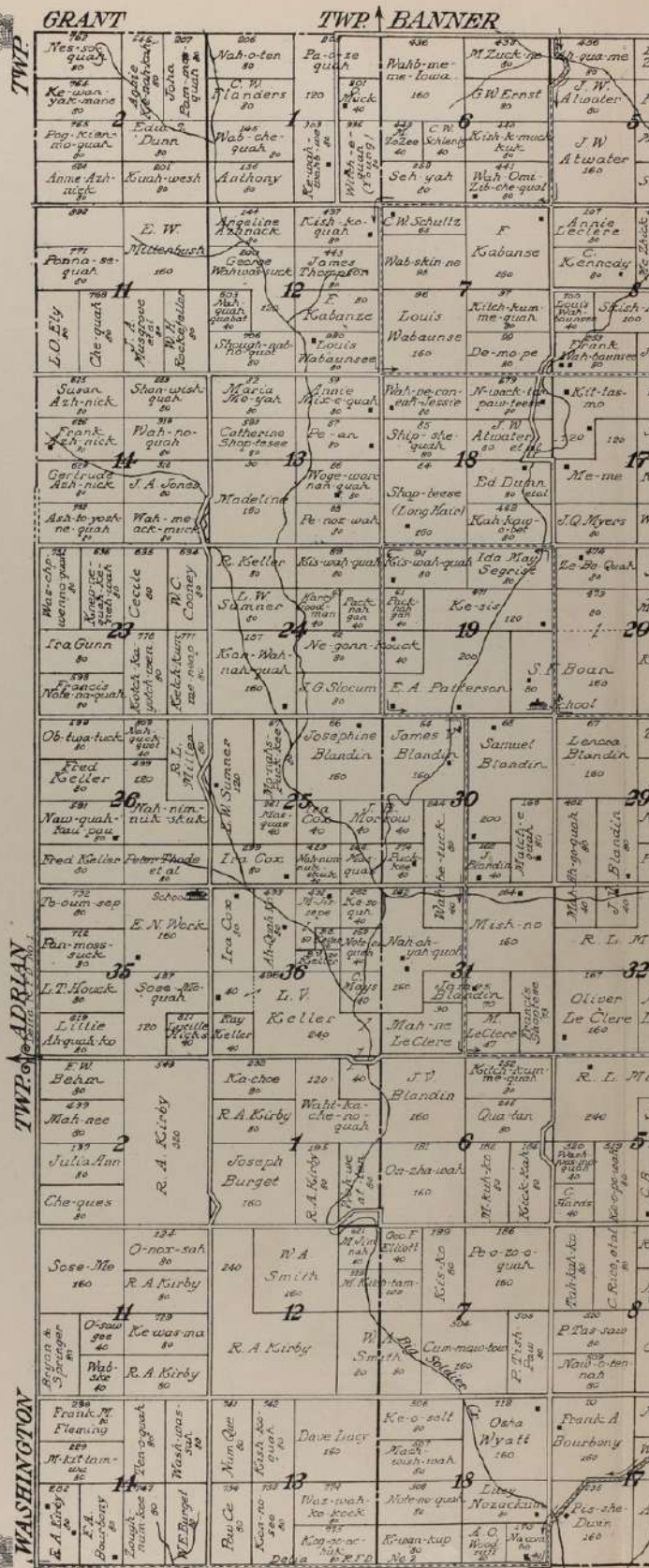
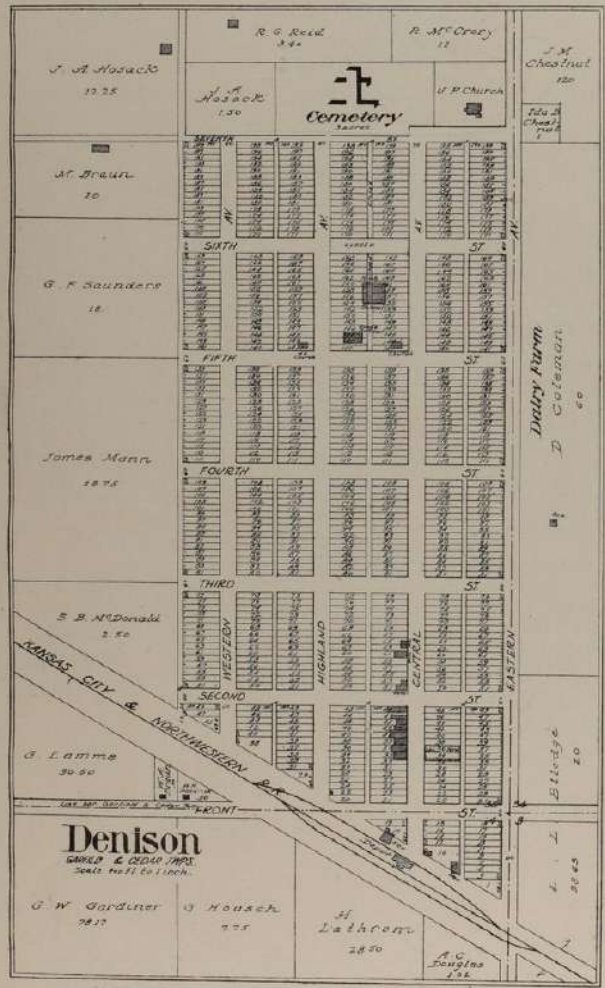
TWP. OF WHITING



Scale 1 1/4 inches to 1 mile

DIMINISHED POTTAWATTOMIE INDIAN RESERVATION

Township 8 South, Range 14 East,
Part of Township 8 South, Ranges 13 and 15 East
and Part of Township 9 South, Ranges 13 14 and 15 East of the 6th P.M.



538 Louis M. Zaccatena	427 Pa-nah	432 Elizabeth	434 Shahn-wah	435 Louis Ward	436 John D. Hill	437 Wm. L. Hill	438 Wm. L. Hill	439 Wm. L. Hill	440 Wm. L. Hill	441 Wm. L. Hill	442 Wm. L. Hill	443 Wm. L. Hill	444 Wm. L. Hill	445 Wm. L. Hill	446 Wm. L. Hill	447 Wm. L. Hill	448 Wm. L. Hill	449 Wm. L. Hill	450 Wm. L. Hill	451 Wm. L. Hill	452 Wm. L. Hill	453 Wm. L. Hill	454 Wm. L. Hill	455 Wm. L. Hill	456 Wm. L. Hill	457 Wm. L. Hill	458 Wm. L. Hill	459 Wm. L. Hill	460 Wm. L. Hill	461 Wm. L. Hill	462 Wm. L. Hill	463 Wm. L. Hill	464 Wm. L. Hill	465 Wm. L. Hill	466 Wm. L. Hill	467 Wm. L. Hill	468 Wm. L. Hill	469 Wm. L. Hill	470 Wm. L. Hill	471 Wm. L. Hill	472 Wm. L. Hill	473 Wm. L. Hill	474 Wm. L. Hill	475 Wm. L. Hill	476 Wm. L. Hill	477 Wm. L. Hill	478 Wm. L. Hill	479 Wm. L. Hill	480 Wm. L. Hill	481 Wm. L. Hill	482 Wm. L. Hill	483 Wm. L. Hill	484 Wm. L. Hill	485 Wm. L. Hill	486 Wm. L. Hill	487 Wm. L. Hill	488 Wm. L. Hill	489 Wm. L. Hill	490 Wm. L. Hill	491 Wm. L. Hill	492 Wm. L. Hill	493 Wm. L. Hill	494 Wm. L. Hill	495 Wm. L. Hill	496 Wm. L. Hill	497 Wm. L. Hill	498 Wm. L. Hill	499 Wm. L. Hill	500 Wm. L. Hill
------------------------	------------	---------------	---------------	----------------	------------------	-----------------	-----------------	-----------------	-----------------	-----------------	-----------------	-----------------	-----------------	-----------------	-----------------	-----------------	-----------------	-----------------	-----------------	-----------------	-----------------	-----------------	-----------------	-----------------	-----------------	-----------------	-----------------	-----------------	-----------------	-----------------	-----------------	-----------------	-----------------	-----------------	-----------------	-----------------	-----------------	-----------------	-----------------	-----------------	-----------------	-----------------	-----------------	-----------------	-----------------	-----------------	-----------------	-----------------	-----------------	-----------------	-----------------	-----------------	-----------------	-----------------	-----------------	-----------------	-----------------	-----------------	-----------------	-----------------	-----------------	-----------------	-----------------	-----------------	-----------------	-----------------	-----------------	-----------------	-----------------



MAP OF
BANNER
 TOWNSHIP
 Scale 2 inches to 1 mile

Township 7 South, Range 14 East of the 6th P. M.

JEFFERSON

TWP

TWP	6 A. Stauffer 80 Wm. Meekman 80	7 Highland View Dairy Farm A. J. Bauer 80 Wm. Fisher 80 Adam Fisher 80	8 John S. Fisher 120 Win. M. Fisher 120 J. Peace 80	9 L. M. Biltz 80 L. B. Askern 160 E. H. McDonald 80 Chas. Adams 80	10 J. E. Elmore 120 Miles Standish 120 Mary E. Rings 120 Ed. Rings 80	11 Ed. Newnan 160 Aug. Zebell 80 I. Felst 80 Mary J. Hoop 80 Lizzie Dickson 120	12 Pleasant Hill Farm Geo. M. Klumwire 160 Cedar Slope Farm E. Bell 160 George Draxton 2250 R. F. Hamm 15380 Fred Brockelman 160	13 F. W. Klumwire 160 R. T. Wible 160 Geo. Draxton 2250 John H. Bryant 160 John H. Bryant 160	14 Richard Kuglin 160 M. Haas Ent. 160 Wm. Little 80 J. J. Little 80 Wm. Putman 80 John H. Bryant 160	15 Sunny Heights O. H. Kuglin 160 B. W. Hunter 80 Geo. Meyer 80 B. T. Parkhurst 160 M. Bryant 160	16 Ed. Rings 80 Wiley Carpenter 80 Raymond Riley 120 J. H. Riley 80	17 L. B. Askern 160 Richard 80 Ed. Rings 80 Wiley Carpenter 80	18 L. B. Askern 160 Richard 80 Ed. Rings 80 Wiley Carpenter 80	19 Ed. Rings 80 Wiley Carpenter 80 Raymond Riley 120 J. H. Riley 80	20 Ed. Rings 80 Wiley Carpenter 80 Raymond Riley 120 J. H. Riley 80	21 Ed. Rings 80 Wiley Carpenter 80 Raymond Riley 120 J. H. Riley 80	22 Ed. Rings 80 Wiley Carpenter 80 Raymond Riley 120 J. H. Riley 80	23 Ed. Rings 80 Wiley Carpenter 80 Raymond Riley 120 J. H. Riley 80	24 Ed. Rings 80 Wiley Carpenter 80 Raymond Riley 120 J. H. Riley 80	25 Ed. Rings 80 Wiley Carpenter 80 Raymond Riley 120 J. H. Riley 80	26 Ed. Rings 80 Wiley Carpenter 80 Raymond Riley 120 J. H. Riley 80	27 Ed. Rings 80 Wiley Carpenter 80 Raymond Riley 120 J. H. Riley 80	28 Ed. Rings 80 Wiley Carpenter 80 Raymond Riley 120 J. H. Riley 80	29 Ed. Rings 80 Wiley Carpenter 80 Raymond Riley 120 J. H. Riley 80	30 Ed. Rings 80 Wiley Carpenter 80 Raymond Riley 120 J. H. Riley 80	31 Ed. Rings 80 Wiley Carpenter 80 Raymond Riley 120 J. H. Riley 80	32 Ed. Rings 80 Wiley Carpenter 80 Raymond Riley 120 J. H. Riley 80	33 Ed. Rings 80 Wiley Carpenter 80 Raymond Riley 120 J. H. Riley 80	34 Ed. Rings 80 Wiley Carpenter 80 Raymond Riley 120 J. H. Riley 80	35 Ed. Rings 80 Wiley Carpenter 80 Raymond Riley 120 J. H. Riley 80	36 Ed. Rings 80 Wiley Carpenter 80 Raymond Riley 120 J. H. Riley 80	FRANKLIN
-----	---	---	---	--	---	---	--	---	---	--	---	--	--	---	---	---	---	---	---	---	---	---	---	---	---	---	---	---	---	---	---	----------

LINCOLN

TWP



MAP OF
JEFFERSON
 TOWNSHIP
 Scale 2 inches to 1 mile

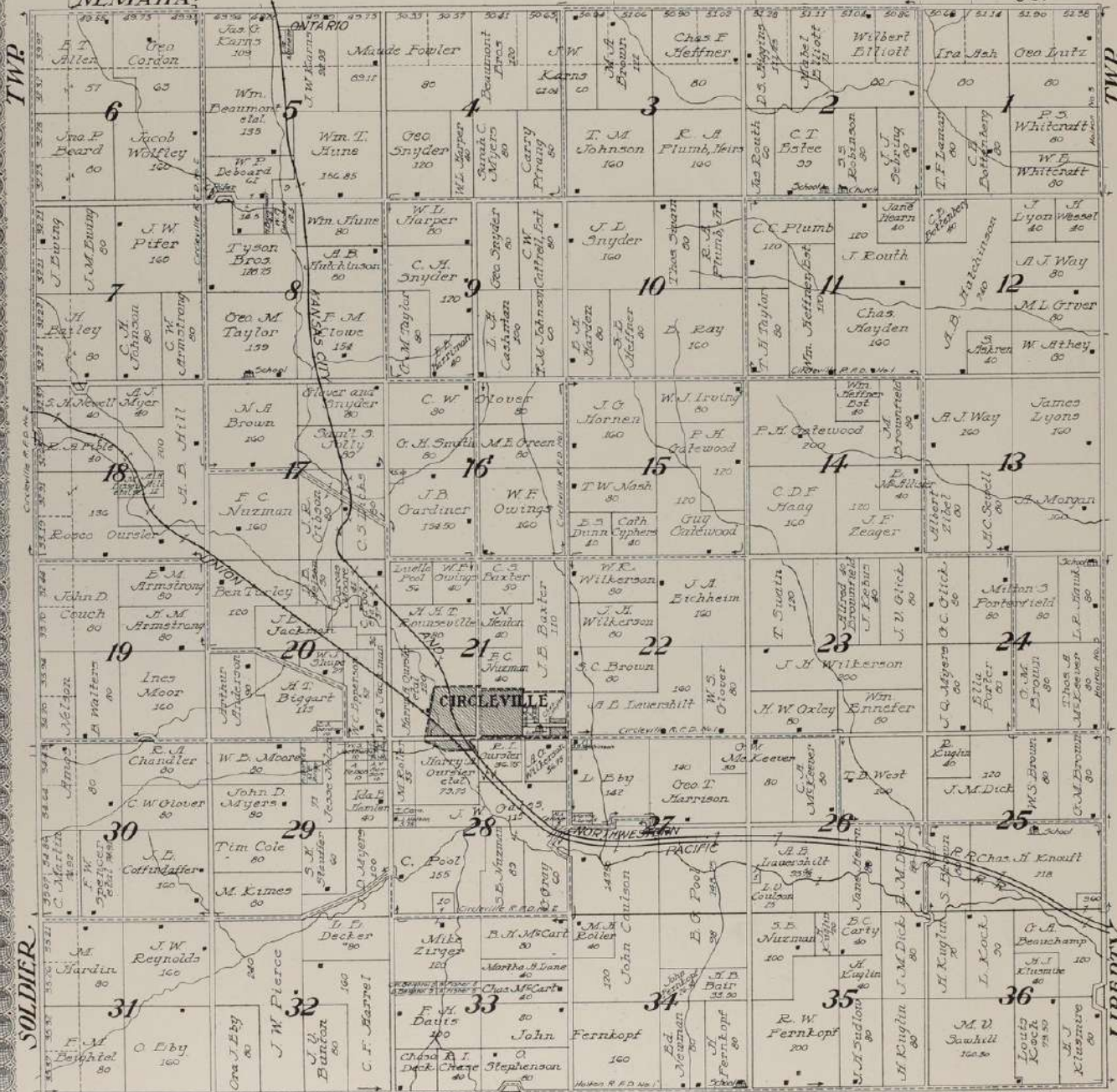
Township 6 South, Range 14 East of the 6th P. M.

NEMAHA

CO.

TWP

TWP

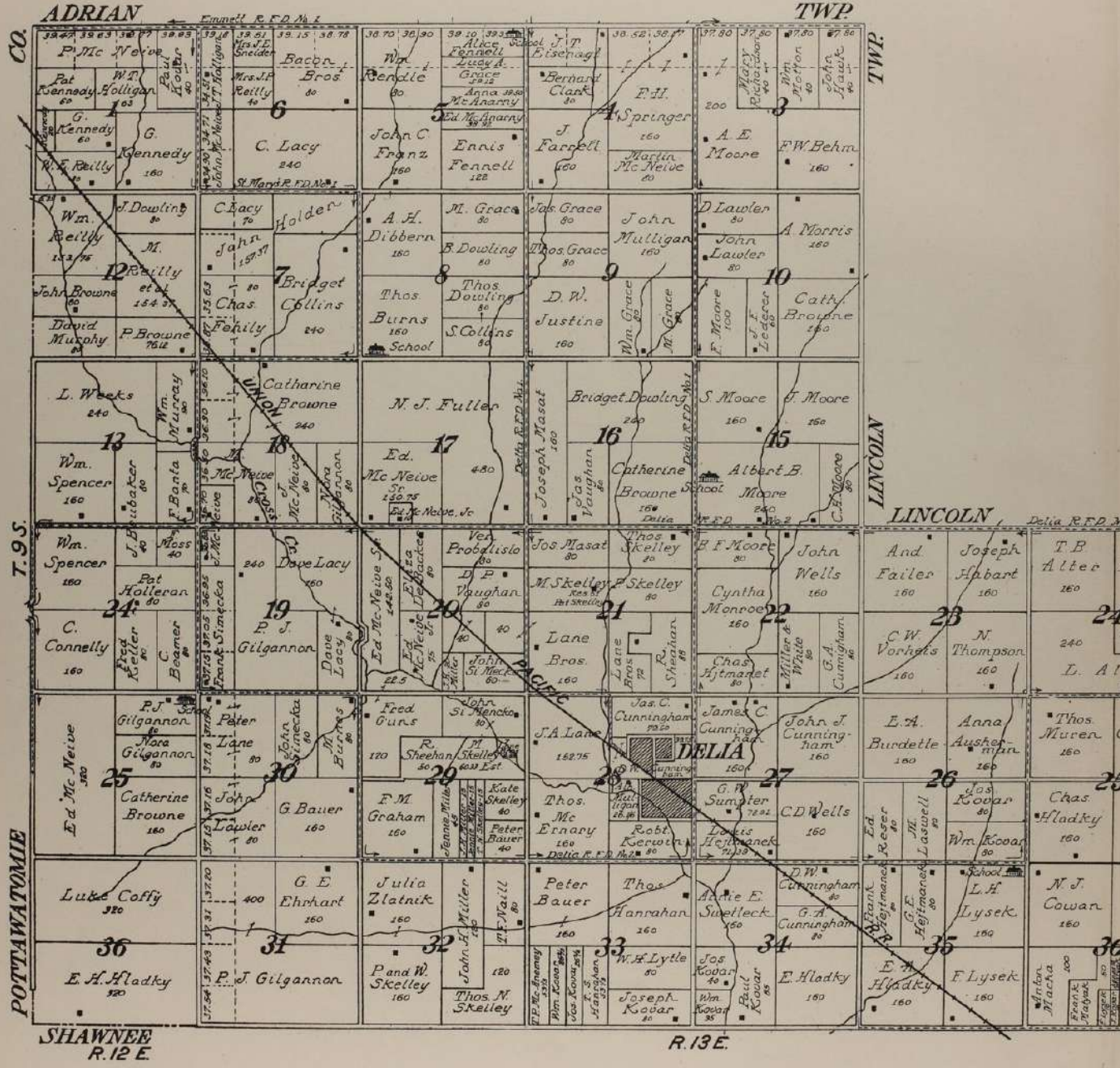


BANNER

TWP

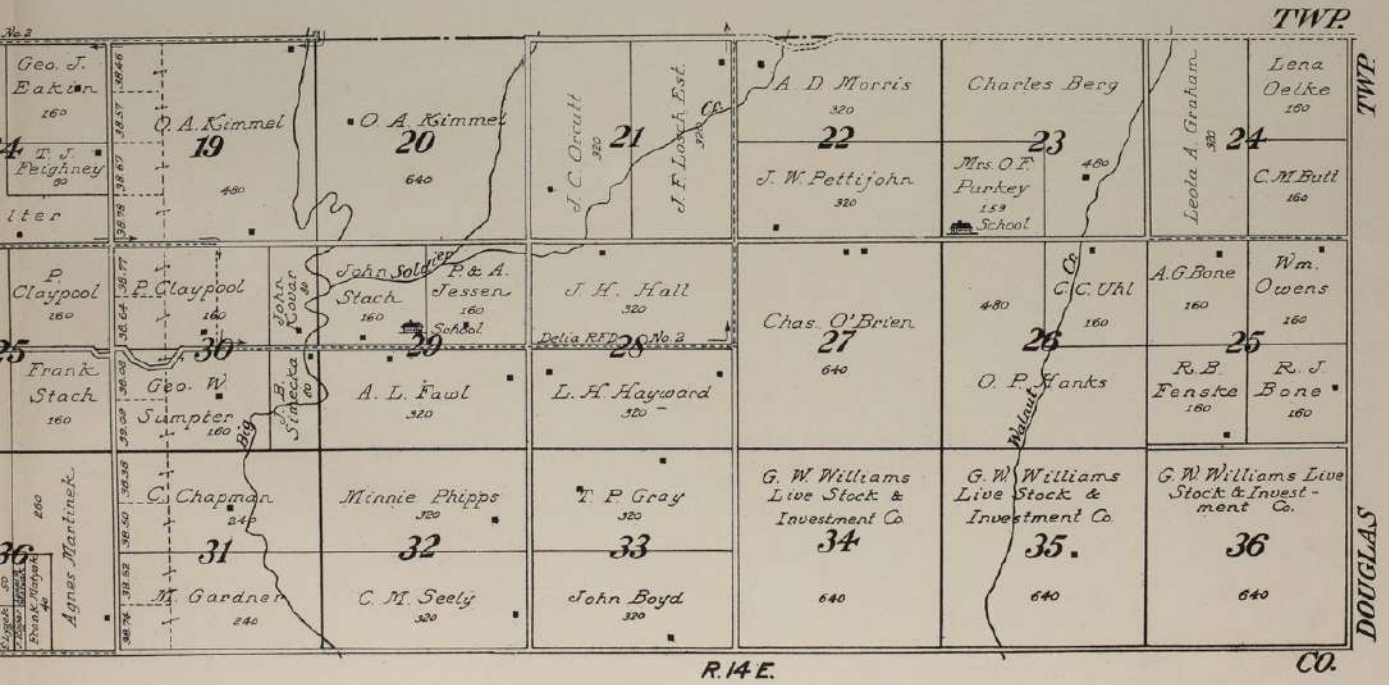
SOLDIER

LIBERTY



MAP OF
WASHINGTON
 TOWNSHIP
 Scale 2 inches to 1 mile

Part of Township 9 South, Ranges 12, 13 and 14 East of the 6th P.M.



R. 14 E.

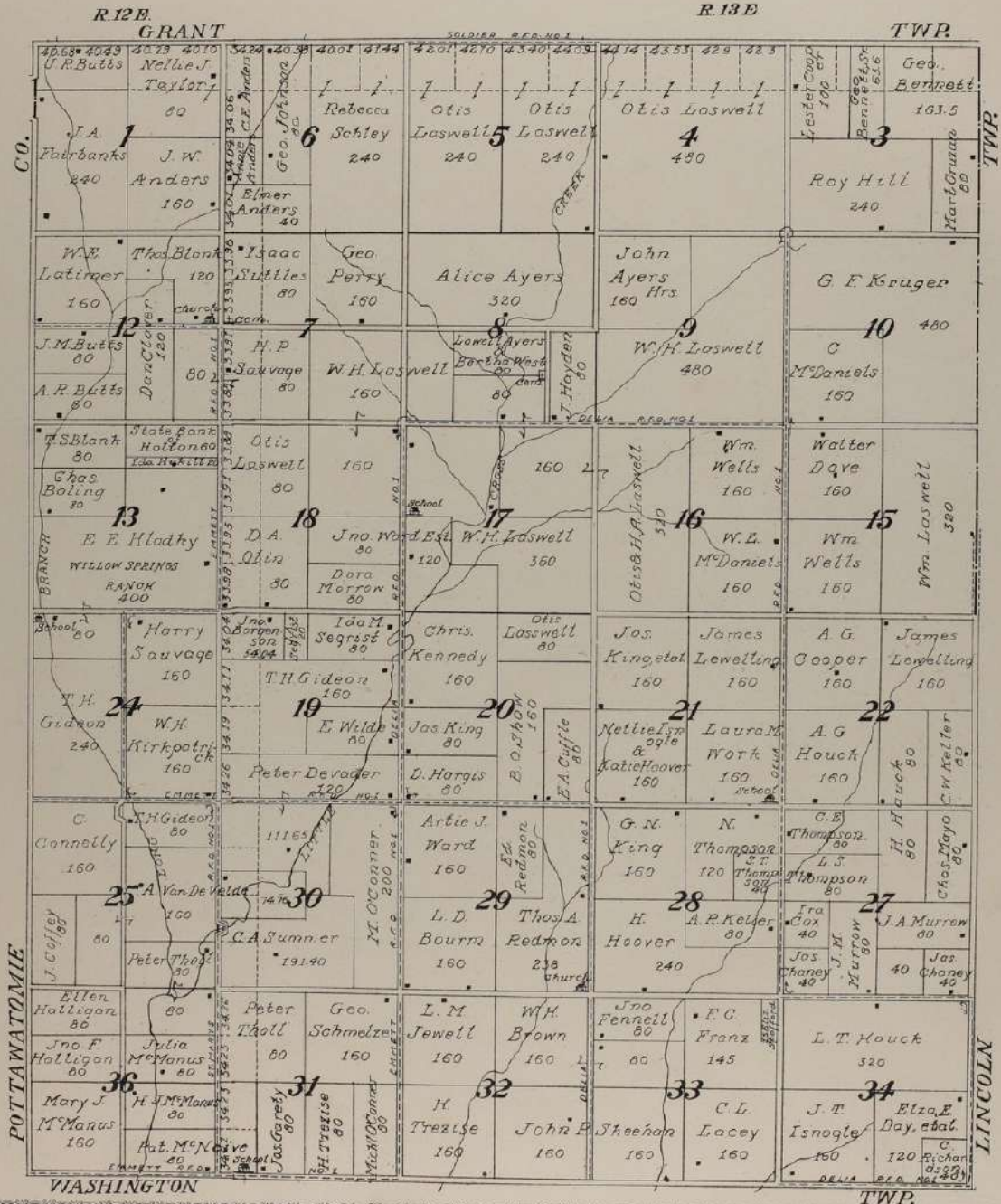
CO.

TWP.
DOUGLAS

MAP OF ADRIAN TOWNSHIP

Scale 2 inches to 1 mile

Part of Township 8 South, Ranges 12 and 13 East of the 6th P.M.



MAP OF GRANT TOWNSHIP

Scale 2 inches to 1 mile

Township 7 South, Range 13 East and Part of Township 7 South, Range 12 East of the 6th P. M.



ADRIAN

TWP. LINCOLN

TWP. BANNER

SOLDIER

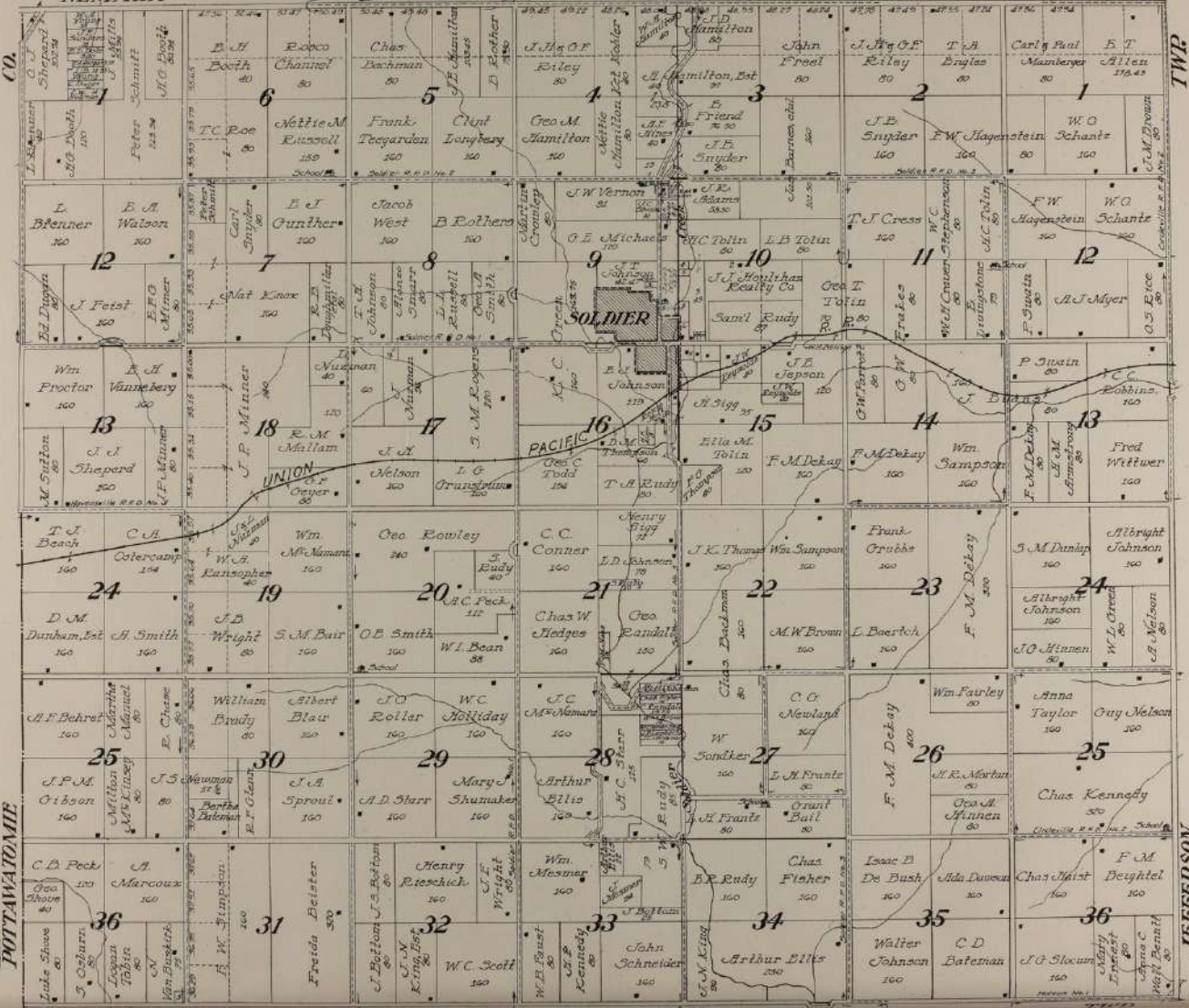
TOWNSHIP

Scale 2 inches to 1 mile

Township 6 South, Range 13 East and Part of Township 6 South, Range 12 East of the 5th P. M.

NEMAHA CO.

CO.



POTTAWATOMIE

JEFFERSON

30