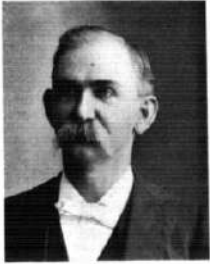




# Portrait Department



A. P. McMILLAN  
County Treasurer



CHAS. E. EWING  
County Clerk



W. H. CRICHTY  
Clerk District Court



J. C. EHENSCH  
Sheriff



LEVI COOPER  
County Attorney



GEO. D. CARNEY  
Supt. of Public Instruction



JUDGE J. A. VANATTA  
Private Judge



MITCHELL COUNTY COURT HOUSE



J. R. THOMPSON  
County Sargent



W. A. HART  
Deputy County Treasurer



C. DRAHER  
Register of Deeds



MRS. C. DRAHER  
Deputy Register of Deeds



CLARA E. EWING  
Deputy County Clerk



S. GHENNAN  
Deputy Sheriff



C. M. GIERDAN  
Chairman Board County Commissioners



SLATER WHITE  
Member Board County Commissioners



O. DEISER



J. F. CORBER



JOSEPH WEAR



REV. E. P. MITHEMSKI



# Portrait Department



FRANK SOPER



ED JAMES



A. C. MOULTRIE



C. J. JOHNSON



CATHOLIC CHURCH, BELOIT, KAN.



REV. M. MRITZ, D. D.



HENRY BUCHELL



DAVID H. HARKISH



ROY MCPERRY



M. J. SAUNDERS, M. D.



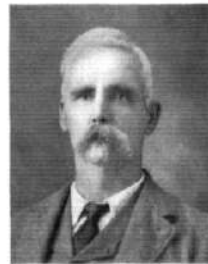
J. W. HANNA



LEVI L. ALBRECH



V. H. BEACH



ELLIS BRYAN



WM. WOOLMAN



B. H. BILLINGS



HENRY C. OWEN



CHAS. L. KAGEY



W. H. MICHELL



J. A. NEWQUIST



C. R. BROWN



M. J. FAIRHAR, SR.



S. H. DODGE



MEALL BROS. OF CAÑON CITY



GEO. H. MELINNIE



T. A. SCOGGINS



H. A. PHELPS



PETER GENGLER



J. W. ANDREWS



MR. AND MRS. A. R. RITZ