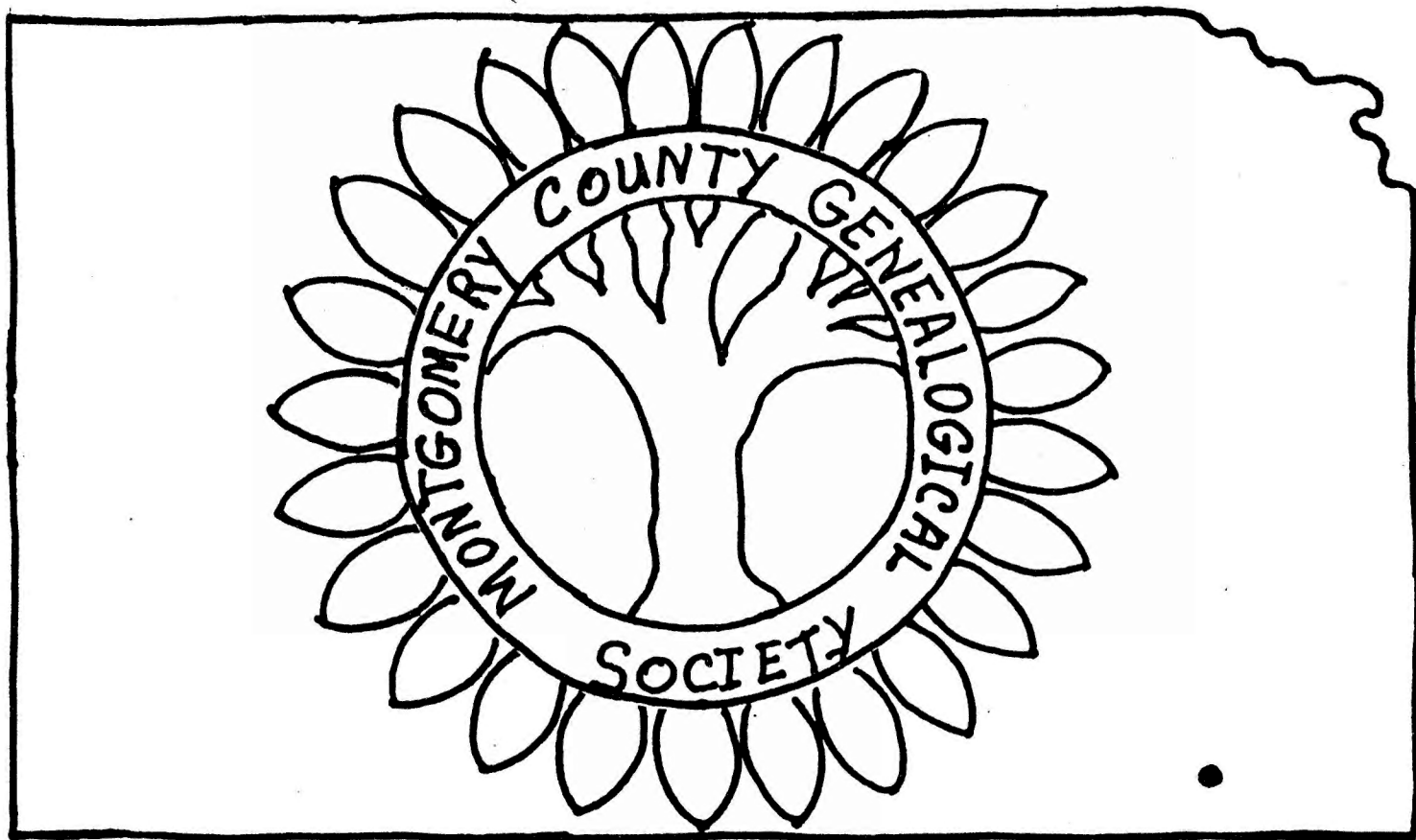


FEBRUARY 1987

VOLUME XX

Number 1

THE DESCENDER



KANSAS

P-2012

MONTGOMERY COUNTY GENEALOGICAL SOCIETY

Box 444, Coffeyville, Kansas 67337

President - - - - -	Pastor Herman GUY
Vice-President - - - - -	Mrs. Maxine DICK
Secretary - - - - -	Mrs. Carol DUVALL
Treasurer - - - - -	Mrs. Ann KETTERMAN
Records Chairman - - - - -	Mrs. Evelyn HENISEY
Editor - - - - -	Mrs. Judy HALL

The Montgomery County Genealogical Society meetings are held on the second Thursday of each month at 7:30 p.m. These meetings are held in the Community Room of the Coffeyville Public Library at Tenth and Willow Streets. Single memberships in the Society are \$5.00 or \$7.00 for husband and wife. Out-of-town memberships are \$7.00 (due to postage) per year. Our year runs from January 1st to December 31st.

"The Descender" is published quarterly: February, May, August, and November. The price of a single magazine is \$1.50. Free magazines to members with one per family, please. A fee of \$1.50 is asked for queries and free queries to all members.

Neither the Editor nor the Society accepts responsibility for the accuracy of the material which has been submitted for publication.

TABLE OF CONTENTS

	<u>PAGE</u>
Officers, Society Data, " <u>The Descender</u> " - - - - -	1
Books For Sale - - - - -	2
Researching Old Newspapers - - - - -	3
The Prairie Pipe Line Company - - - - -	8
East Brown - West Coffeyville School District #62 - - - - -	12
East Brown - West Coffeyville School Teachers - - - - -	14
East Brown - West Coffeyville School Board Members - - - - -	23
New At The Library - - - - -	27
Conservation Of Old Paper - - - - -	28
Queries - - - - -	30

BOOKS FOR SALE

The following is a list of books which are typed and xeroxed pages. The covers are clear plastic with a sturdy white seam binder. The art work on the under cover is drawn by artist Don SPRAGUE.

The books will be sent with postage included in the above prices. Send your orders to:

MONTGOMERY COUNTY GENEALOGICAL SOCIETY

Box 444

Coffeyville, Kansas 67337

Index of Marriage Records in Montgomery County, Kansas
1870 - 1884. Brides also indexed. Price \$9.75.

Rural Cemetery Book I

South half of Montgomery County, Kansas, including smaller towns and ghost towns. Does not include larger towns of Coffeyville and Caney. 186 pages. Price \$10.00.

Rural Cemetery Book II

North half of Montgomery County, Kansas, including smaller towns and ghost towns. Does not include Independence, Cherryvale, or Elk City. 67 pages. Price \$7.00.

Elmwood (Slosson) Cemetery Index

The oldest Coffeyville cemetery in south part of town. DALTONS are buried here. 88 pages. Price \$7.00.

Drum Creek Township Book

1870 - 1900. This book was researched by one of our out-of-town members, Mr. Robert VANDYNE, of Salina, Kansas. This book is the latest one we have published and includes federal and state census, cemeteries, maps, and histories of people in the Drum Creek Township. Price \$11.00.

RESEARCHING OLD NEWSPAPERS

By Carl RAUCH

In this eighth of a series of articles about old newspapers, let us read about the first newspaper published in the Kansas Territory. In our first and second articles, we quoted the publication KANSAS NEWSPAPERS: A DIRECTORY OF NEWSPAPER HOLDINGS IN KANSAS. We found that the Leavenworth Herald was the title of the first newspaper, first published 15 Sept 1854. The following material was found in the Coffeyville (KS) Journal 20 April 1878, and was copied by the Journal from the St. Joseph Herald. In 1878 the Kansas State Historical Society was only three years old. This article describes the acquisition of the first issues of this pioneer paper by the Society, and the history that surrounded the beginning of this first newspaper.

"FIRST KANSAS NEWSPAPER. The files of the old Leavenworth Herald. Bought for the State Historical Society."

"The Kansas Historical Society has been laboring for many months to obtain the only file in existence of the Leavenworth Herald, the first newspaper published in that Territory. Judge F. G. ADAMS, the Secretary of that Society, wrote to us about two months ago to ascertain whether we could aid him in getting the file of the Herald. It happened that Mrs. S. F. EASTIN, the widow of General L. J. EASTIN, was then visiting friends in this city. We learned from her that the files were in existence and were in the possession of her son, Mr. Jas. W. EASTIN, the editor and

Continued next page

publisher of the Glasgo Journal, formerly published by the father."

"When Gen. EASTIN died the Editorial Association in this State took publication in favor of erecting a monument in honor of their veteran associate. The work has not been accomplished, but we believe that some money has been raised for that purpose. Mrs. EASTIN has sold the Herald files for the purpose of adding to the fund and finally erecting the monument. Judge ADAMS directed us to hand to her the price she had named for the volumes. They were received here yesterday, were found to be in perfect condition, and a draft was accordingly sent to Mrs. EASTIN. Thus a noble woman is aided in a generous purpose and the pioneer newspaper becomes the property of the State where it was published, open to the examination of all citizens and sure of careful preservation."

"The Kansas Society, although still very young, has secured a large number of very valuable newspaper files, as well as books, pictures, relics, manuscript records and rare documents."

"There is no history so full and accurate as that made by a newspaper. The advertisements and letter-lists are by no means uninteresting, but a paper like this shows the beginning of a State, a history of its citizens, towns, public

Continued next page

meetings and important events."

"The first number of the Herald was printed under an elm tree, 15 September 1854. It was then a six-column paper, published weekly by Wm. J. OSBORN and Wm. H. ADAMS. At the beginning of the second volume it was enlarged one column. These files embrace the first four volumes and end 28 August 1868. It will be seen that they cover the whole fighting period of bleeding Kansas. The whole nation was then agitated by the slavery question, and Kansas was the scene where the battle was fought. The Herald was not a great paper in its editorial or its news columns, but it was so edited as to indicated public sentiment, and it contained a large mass of official documents, election proclamations, public speeches, election returns, etc., and gave accounts of many of the outrages. It was Democratic and pro-slavery without any ifs or ands, but that does not make it any the less valuable now. There are some politicians still living who should not be permitted to read these papers with a pair of scissors in their hands. The temptation to mutilate would be too strong. A few numbers of the Herald ought to be photolithographed in order to keep the record they contain from the hands of the spoiler. We shall not copy any of these records or enter the forbidden field."

"The Herald of 13 October 1854,

Continued next page

copies from the St. Louis Herald a letter written from Kansas and containing the following:

'Atchison is one among the numerous towns which have started up in the Territory. It is yet a town in embryo; but at a sale there on the 20th lots sold at the prices ranging from \$40 to \$125 an acre. Senator ATCHISON was present at the sale, and addressed the boys in a speech, telling them, "By God, sire, if you catch an abolitionist in the Territory, hang him as you would a horse-thief.'"

"David R. ATCHISON was then a United States Senator from this State and President pro tem of the Senate."

"On the 20th of October, Capt. Lucian J. EASTIN succeeded Mr. OSBORN and became the editor of the Herald. He became a Brigadier General of the Militia at a later date."

"The Herald of 8th December contains a poetical communication inscribed to the elm tree under which it was born. We copy a specimen stanza:

And from beneath they shade was sent
To every distant clime,

Continued next page

The sheet that first from Kansas went
To tell the march of time.

"It would be easy to compile a volume from these papers and to rescue from oblivion many a fact not elsewhere recorded, but we leave that to the future reader when the files cross the river again to their old home."

"Nearly of the newspapers and books in the Kansas Historical Library contain the anti-slavery version of the early struggle. Now they have the other side, from the pen of Gen. EASTIN and his associate editor, H. Rives POLLARD, and from scores of correspondents. The future historian will have the whole picture placed before him, and will have a sympathetic side for EASTIN and POLLARD, as well as for John BROWN and Jim LANE. When the American Congress, in 1854, with a cowardice never to be forgotten, abdicated--gave up their power over slavery in the Territories and delegated it to the first squatters who arrived there from the North and the South,--they sneaked into hiding places themselves but sent their brothers off to Kansas to kill each other for a principle. The vicarious sacrifice was the madshift of sneaks who were holding the seats of statesmen, and the immutable decree of justice speedily transferred the scene of war from the Marais des Cygnes

Continued next page

to the Potomac. The squatters killed each other with courage enough on both sides, but when the dial had passed from '54 to '61, the nation found the question could not be settled by a few murders on the frontier but had to be fought out under the shadow of the national capital and by a million of men in arms."

THE PRAIRIE PIPE LINE COMPANY

(This information is continued from our November 1986 issue)

COCKRELL, Leslie W. Born July 13th, 1892, at DeWitt, Missouri. Entered service of the Company October 11th, 1917, as Operator on Northern Division. May 23rd, 1918, to August 13th, 1919, had service with United States Army. Reentered service of the Company August 13th, 1919, as Operator on Northern Division and has been continuously in service up to present time. Continuous service date October 11th, 1917.

COLE, Arthur L. Born February 16th, 1888, at Jonesboro, Arkansas. Entered service of the Company August 10th, 1918, as Boiler Washer in F. D. No. 13. February 1st, 1920, promoted to Fireman. Since July 1st, 1920, has been continuously employed as Assistant Foreman, Laborer and at present is Oiler in F. D. No. 3. Continuous service date August 10th, 1918.

COLE, Jobe. Born May 10th, 1866, at Elmwood, Illinois. Entered service of the Prairie Oil & Gas Company December 7th, 1906, as Laborer. April 11th, 1910, promoted to Linewalker.

Continued next page

The Prairie Pipe Line Company contd.

February 1st, 1915, transferred to The Prairie Pipe Line Company and has since been continuously employed as Linewalker, Assistant Foreman and at present is Laborer on Northern Division. Continuous service date December 7th, 1906.

COLEMAN, Charles H. Born November 6th, 1872, at Franklin, Iowa. Had broken service with the Company from May 1st, 1915, to July 11th, 1915. Reentered service of the Company May 15th, 1918, as Laborer in F. D. No. 13. September 1st, 1918, promoted to Engineer and at present is acting in that capacity in F. D. No. 3. Continuous service date May 15th, 1918.

COLEMAN, Howard E. Born March 14th, 1894, at Omaha, Nebraska. Entered service of The Prairie Oil & Gas Company October 1st, 1913, as Laborer in F. D. No. 13. February 1st, 1915, transferred to The Prairie Pipe Line Company, in the same capacity. March 1st, 1915, promoted to Assistant Engineer. June 1st, 1916, promoted to Engineer. May 1st, 1918, to January 1st, 1919, with United States Navy account laying a pipe line in Scotland. January 1st, 1919, reentered service of the Company as Engineer acting in that capacity, in various districts, until April 1st, 1928, when he was promoted to Assistant Connection Foreman, at present being in F. D. No. 29. Continuous service date October 1st, 1913.

COLTRAIN, Morris O. Born December 7th, 1892, at Arlington, Indiana. Entered service of the Company December 17th, 1915, as Linewalker. Has been employed since January 1st, 1918, as Laborer, Fireman and at present is Assistant Engineer in F. D. No. 1. Continuous service date December 17th, 1915.

COLTRAIN, William. Born March 7th, 1862, in Montgomery County, Indiana. From July 15th, 1908, until September, 1908, worked for The Prairie Oil & Gas Company and Standard Oil Company

Continued next page

The Prairie Pipe Line Company contd.

(Kansas), as Laborer. Entered service of The Prairie Oil & Gas Company September 1st, 1908, as Teamster, and February 1st, 1915, transferred to The Prairie Pipe Line Company, in the same capacity. Since February 8th, 1918, has been employed as Truck Driver, Teamster and at present is Laborer and Teamster in F. D. No. 1. Continuous service date July 15th, 1908.

CONNER, John L. Born October 8th, 1872, in the State of Kentucky. Had broken service with McMann Oil Company and Magnolia Petroleum Company from May 1st, 1917, to January 12th, 1918. Entered service of The Prairie Pipe Line Company February 1st, 1918. Since March 1st, 1918, has been employed as Engineer, Fireman, Chief Engineer, Laborer, Engineer-Operator, Assistant Gauger and at present is Engineer in F. D. No. 29. Continuous service date February 1st, 1918.

CONNOR, John F. Born September 19th, 1890, at Wellsville, New York. Entered service of The Prairie Oil & Gas Company June 10th, 1910, and was employed by that Company as Operator, Clerk and Operator, and Assistant Gauger, in various Districts, until February 1st, 1915, when he was transferred to The Prairie Pipe Line Company, as Gauger. October 3rd, 1917, to December 9th, 1919, had service with United States Army. Reentered service of the Company December 9th, 1919, as Gauger in F. D. No. 11 and has continued in that capacity to present time. Continuous service date June 10th, 1910.

CONRY, William F. Born May 16th, 1873, in Huron County, Ohio. Entered service of Buckeye Pipe Line Company May 15th, 1895, continuing with that Company as Laborer and Assistant Gauger until November 11th, 1903, when he entered the service of The Prairie Oil & Gas Company, as Gauger. March 1st, 1913, promoted to Assistant Foreman and February 1st, 1915, transferred to The Prairie Pipe Line Company, in the same capacity. May

Continued next page

The Prairie Pipe Line Company contd.

1st, 1915, promoted to District Foreman. November 12th, 1918, appointed Division Superintendent, at Tulsa, Oklahoma. Continuous service date May 15th, 1895.

CONWAY, Wallace. Born August 24th, 1894, at Findlay, Ohio. Entered service of the Company November 1st, 1915, as Machinist on Southern Division and has been continuously in service up to present time. Continuous service date November 1st, 1915.

COOK, Harry D. Born March 24th, 1884, at Parkersburg, West Virginia. Entered service of The Prairie Oil & Gas Company August 31st, 1905, as Clerk in General Office, at Independence, Kansas, continuing in that capacity, in various departments, until February 1st, 1915, when he was transferred to The Prairie Pipe Line Company as a Clerk in the Accounting Department. March 1st, 1918, promoted to Cashier and is acting in that capacity at present time. Continuous service date August 31st, 1905.

COOKSEY, Blaine E. Born December 4th, 1894, at Washington, Kansas. Entered service of the Company March 1st, 1917, as Laborer on Northern Division. August 1st, 1917, promoted to Assistant Tour Engineer. January 30th, 1918, to March 16th, 1919, had service with United States Army. Reentered service of the Company March 16th, 1919, as Assistant Tour Engineer on Northern Division. May 1st, 1920, promoted to Tour Engineer. Continuous Service date March 1st, 1917.

To Be Continued

EAST BROWN - WEST COFFEYVILLE SCHOOL DISTRICT #62

1871 - 1965

Township 34; Range 16 E

Researched by Carol DUVALL

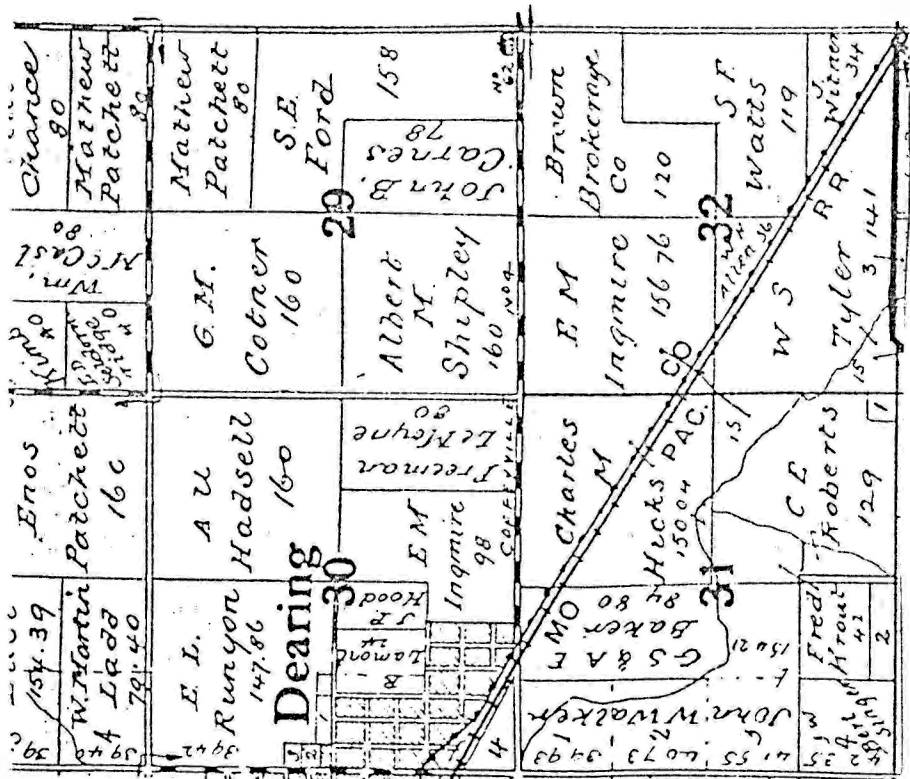
(Copied only in part from the Montgomery County Courthouse)

East Brown School District #62 was organized at the house of J. R. GALLOWAY on 8 July 1871, on order of County Superintendent, Nathan BASS, dated 26 June 1871.

The school building was located on the southeast corner of Section 29 in Fawn Creek Township or, in 1985, the location is owned by the Country Club and is on the northwest corner of the intersection.

Fawn Creek
Township.

1916



Continued next page

Miss Grace CARNS, a former teacher at East Brown, said a new building was built for the fall term of 1916 and Lucy McNEAL was the first teacher in the newer building.

East Brown was always a one room school with one teacher and 35 pupils the last year at this location in the Spring of 1926.

The fall term of 1926-27 of East Brown School District #62 was started at a new location. The new location was south and east of the old location over in Parker Township, Section 33, in the south 1/4 of the section and west of the City of Coffeyville.

East Brown District #62 is now a two teacher school.

Miss Grace CARNS said the East Brown School building in Fawn Creek Township was sold to the Bates District further north as their building had burned down.

At the annual meeting in June 1930, it was voted to change the name of the school to West Coffeyville District #62, probably because the community was so closely connected to the growing City of Coffeyville.

In 1948-49 the West Coffeyville building was modernized and enlarged.

The two teacher period ended with the 1953-54 term with 69 students. During this term they voted to erect a separate building to use as an office for the principal, two classrooms, two rest rooms, heating and storage.

In 1954-55 two more teachers were added with enrollment at 99 students.

In 1962 a fine gymnasium or multi purpose building was erected.

In 1965 District #62 was disorganized and became a part of Unified District #445.

EAST BROWN - WEST COFFEYVILLE SCHOOL TEACHERS

1871 - 1965

Submitted by Carol DUVALL

<u>YEAR</u>	<u>TEACHER</u>	<u>SALARY</u>	<u>TERM</u>
1881 - 1882	Anne BURNS	\$ 35.00	4 months
1882 - 1883	Hannah SHEFFIELD	\$ 35.00	4 months
1883 - 1884	Mr. GEDDES		
1884 - 1885	Mr. GEDDES		
1885 - 1886	Andy CURRY	\$ 40.00	4 months
1886 - 1887	Andy CURRY		
1887 - 1888	Andy CURRY		
1888 - 1889	R. Y. KENNEDY		
1889 - 1890	R. Y. KENNEDY		
1890 - 1891	Frank ALLEN	\$ 38.00	8 months
1891 - 1892	Wm. N. BANKS	\$ 40.00	5 months
1892 - 1893	John R. SMITH	\$ 40.00	3 months
1893 - 1894	Frank VAN HORN		6 months
1894 - 1895	C. C. ROBINS		
1895 - 1896	C. F. AUSTIN		

Continued next page

E. Brwn - W. Cffyvllle Schl Tchrs contd.

<u>YEAR</u>	<u>TEACHER</u>	<u>SALARY</u>	<u>TERM</u>
1896 - 1897	C. F. AUSTIN		
1897 - 1898	C. F. AUSTIN	\$ 35.00	7 months
1898 - 1899	W. F. KELLER	\$ 35.00	7 months
1899 - 1900	Winnie PHILLIPS	\$ 30.00	8 months
1900 - 1901	Guy SMITH	\$ 30.00	7 months
1901 - 1902	C. G. AUSTIN	\$ 40.00	7 months
1902 - 1903	Lucille KRONE	\$ 40.00	7 months
1903 - 1904	Edna TYLER	\$ 40.00	
1904 - 1905	Edna TYLER		
1905 - 1906	Edna TYLER		6 months
1906 - 1907	B. H. DUNBAR	\$ 40.00	7 months
1907 - 1908	B. H. DUNBAR	\$ 55.00	7 months
1908 - 1909	Aura THEISS	\$ 40.00	7 months
1909 - 1910	Will GORDON	\$ 55.00	7 months
1910 - 1911	F. E. MESSERSMITH	\$ 55.00	
1911 - 1912	Hazel SHIRLEY	\$ 50.00	

Continued next page

<u>YEAR</u>	<u>TEACHER</u>	<u>SALARY</u>	<u>TERM</u>
1912 - 1913	Hazel SHIRLEY	\$ 50.00	7 months
1913 - 1914	Mena DIENST		
1914 - 1915	Oren GRAY (or ??? Ida MILAS)		
1915 - 1916	C. F. AUSTIN	\$ 65.00	8 months
1916 - 1917	Lucy McNEAL	\$ 55.00	7 months
1917 - 1918	Drucilla COURTNEY	\$ 65.00	8 months
1918 - 1919	Drucilla COURTNEY	\$ 85.00	8 months
1919 - 1920	Drucilla COURTNEY	\$100.00	
1920 - 1921	Grace CARNS	\$100.00	8 months
1921 - 1922	Grace CARNS	\$100.00	8 months
1922 - 1923	Grace CARNS	\$110.00	8 months
1923 - 1924	Pearl A. DILLON	\$125.00	8 months
1924 - 1925	Pearl A. DILLON	\$125.00	
1925 - 1926	Pearl A. DILLON	\$125.00	
1926 - 1927	Pearl A. DILLON	\$130.00	8 months
	Mrs. Ruth MATHES	\$120.00	

Continued next page

E. Brwn - W. Cffyville Schl Tchrs contd.

<u>YEAR</u>	<u>TEACHER</u>	<u>SALARY</u>	<u>TERM</u>
1927 - 1928	Fay PERKINS	\$125.00	8 months
	Mrs. Ruth MATHES	\$125.00	8 months
1928 - 1929	Fay PERKINS		
	Mrs. Ruth MATHES		
1929 - 1930	Ruth D. MATHES	\$125.00	
	Mrs. Wilma HECKMAN	\$125.00	
1930 - 1931	Mrs. Faye RUTTER	\$132.50	
	Ruth D. MATHES	\$132.50	
1931 - 1932	Helen O. FERRELL	\$115.00	
	Bernice KREBS	\$115.00	
1932 - 1933	Bernice KREBS	\$ 90.00	
	Floyd GERDES	\$ 90.00	
1933 - 1934	Bernice KREBS	\$ 90.00	
	Floyd GERDES	\$100.00	
1934 - 1935	Floyd GERDES	\$100.00	
	Maxine WREN	\$ 90.00	

Continued next page

E. Brwn - W. Cffyvllle Schl Tchrs contd.

<u>YEAR</u>	<u>TEACHER</u>	<u>SALARY</u>	<u>TERM</u>
1935 - 1936	Oren GRAY	\$100.00	8 months
	Doris BALDWIN	\$ 80.00	
1936 - 1937	M. O. LANCASTER	\$100.00	9 months
	Doris BALDWIN	\$ 95.00	
1937 - 1938	M. O. LANCASTER	\$105.00	
	Doris BALDWIN	\$105.00	
1938 - 1939	M. O. LANCASTER	\$110.00	
	Olivia MILLER	\$105.00	
1939 - 1940	M. O. LANCASTER		
	Olivia MILLER		
1940 - 1941	M. O. LANCASTER		
	Olivia MILLER		
1941 - 1942	James O. RUSSEL	\$115.00	9 months
	Olivia MILLER	\$110.00	
1942 - 1943	Bessie L. Grant	\$115.00	
	Grace TROUTMAN	\$110.00	

Continued next page

E. Brwn - W. Cffyvllle Schl Tchrs contd.

<u>YEAR</u>	<u>TEACHER</u>	<u>SALARY</u>	<u>TERM</u>
1943 - 1944	Bessie L. GRANT	\$120.00	
	Grace TROUTMAN	\$110.00	
1944 - 1945	Bessie GRANT	\$145.00	
	Grace TROUTMAN	\$140.00	
1945 - 1946	Bessie L. FRANCK	\$165.00	
	Ruth ELLISON	\$160.00	
1946 - 1947	Ethel CHICK	\$180.00	
	Bessie FRANCK	\$175.00	
1947 - 1948	Dovea DAVIS	\$215.00	
	Bessie L. FRANCK	\$210.00	
1948 - 1949	Dovea DAVIS	\$250.00	
	Bessie L. FRANCK	\$245.00	
1949 - 1950	Dovea DAVIS	\$282.22	
	Bessie L. FRANCK		
1950 - 1951	Dovea DAVIS		
	Bessie L. FRANCK		

Continued next page

E. Brwn - W. Cffyvllle Schl Tchrs contd.

<u>YEAR</u>	<u>TEACHER</u>	<u>SALARY</u>	<u>TERM</u>
1951 - 1952	Dovea DAVIS		
	Bessie L. FRANCK		
1952 - 1953	Dovea DAVIS		
	Bessie L. FRANCK		
1953 - 1954	Dovea DAVIS		
	Bessie L. FRANCK		
1954 - 1955	Robert B. COWAN		
	Madeline MAIDEN		
	Grace TROUTMAN		
1955 - 1956	Robert B. COWAN		
	Mrs. Grace TROUTMAN		
	Mrs. Madeline MAIDEN		
	Mrs. Bessie L. FRANCK		
1956 - 1957	R. C. POTEET		
	Grace TROUTMAN		
	Madeline MAIDEN		

Continued next page

E. Brwn - W. Cffyvllle Schl Tchrs contd.

<u>YEAR</u>	<u>TEACHER</u>	<u>SALARY</u>	<u>TERM</u>
	Bessie L. FRANCK		
1957 - 1958	Eugene ONELIO		
	Mrs. Maurine MILLER		
	Bessie L. FRANCK		
1958 - 1959	Howard CUER		
	Grace TROUTMAN		
	Maurine MILLER		
	Bessie FRANCK		
1959 - 1960	Howard CUER		
	Grace TROUTMAN		
	Doris BEAM		
	Phyllis JORDAN		
1960 - 1961	Howard CUER		
	Grace TROUTMAN		
	Miss Magada ALEXANDER		
	Doris BEAM		

Continued next page

E. Brwn - W. Cffyvllle Schl Tchrs contd.

<u>YEAR</u>	<u>TEACHER</u>	<u>SALARY</u>	<u>TERM</u>
1961 - 1962	Howard CUER		
	Doris BEAM		
	Grace TROUTMAN		
	Miss Magada ALEXANDER		
1962 - 1963	Howard CUER		
	Doris BEAM		
	Mrs. Magada CRAVEN		
	Grace TROUTMAN		
1963 - 1964	Howard CUER		
	Grace TROUTMAN		
	Mrs. Margaret WALTERS		
	Doris BEAM		
1964 - 1965	Howard CUER		
	Grace TROUTMAN		
	Mrs. Margaret WALTERS		
	Mrs. Mildred HARRIS *****		

EAST BROWN - WEST COFFEYVILLE SCHOOL BOARD MEMBERS

1895 - 1964

Submitted by Carol DUVALL

<u>YEAR</u>	<u>DIRECTOR</u>	<u>CLERK</u>	<u>TREASURER</u>
1895 - 1896	D. A. CLINE	A. U. HADSELL	E. M. INGMIRE
1896 - 1897	No Record		
1897 - 1898	D. A. CLINE	A. U. HADSELL	Elias INGMIRE
1898 - 1899	D. A. CLINE	A. U. HADSELL	Elias INGMIRE
1899 - 1900	D. A. CLINE	Elias INGMIRE	W. W. TYLER
1900 - 1901	D. A. CLINE	Elias INGMIRE	W. W. TYLER
1901 - 1902	D. A. CLINE	Elias INGMIRE	W. W. TYLER
1902 - 1903	D. A. CLINE	Elias INGMIRE	W. W. TYLER
1903 - 1904	D. A. CLINE	Elias INGMIRE	W. W. TYLER
1904 - 1905	D. A. CLINE	Elias INGMIRE	W. W. TYLER
1905 - 1906	D. A. CLINE	Elias INGMIRE	W. W. TYLER
1906 - 1907	D. A. CLINE	Elias INGMIRE	W. W. TYLER
1907 - 1908	D. A. CLINE	Elias INGMIRE	W. W. TYLER
1908 - 1909	D. A. CLINE	Elias INGMIRE	W. W. TYLER
1909 - 1910	D. A. CLINE	Elias INGMIRE	W. W. TYLER

Continued next page

E. Brwn - W. Cffyvllle Schl Bd Mbrs contd.

<u>YEAR</u>	<u>DIRECTOR</u>	<u>CLERK</u>	<u>TREASURER</u>
1910 - 1911	A. S. BAKER	Elias INGMIRE	W. W. TYLER
1911 - 1912	No Record		
1912 - 1913	A. S. BAKER	A. U. HADSELL	G. M. COTNER
1913 - 1914	No Record		
1914 - 1915	Mrs. Sam WITWER	A. U. HADSELL	G. M. COTNER
1915 - 1916	C. W. CARNES	A. M. SHIPLEY	G. M. COTNER
1916 - 1917	C. W. CARNES	A. M. SHIPLEY	G. M. COTNER
1917 - 1918	C. W. CARNES	A. M. SHIPLEY	G. M. COTNER
1918 - 1919	No Record		
1919 - 1920	C. W. CARNES	A. L. PHILLIPS	G. W. AKERS
1920 - 1921	C. W. CARNES	A. L. PHILLIPS	G. W. AKERS
1921 - 1922	C. W. CARNES	A. L. PHILLIPS	G. W. AKERS
1922 - 1923	C. W. CARNES	A. L. PHILLIPS	G. W. AKERS
1923 - 1924	G. W. AKERS, Jr.	A. L. PHILLIPS	C. R. INGMIRE
1924 - 1925	No Record		
1925 - 1926	C. J. KAUFMAN	A. L. PHILLIPS	C. R. INGMIRE

Continued next page

<u>YEAR</u>	<u>DIRECTOR</u>	<u>CLERK</u>	<u>TREASURER</u>
1926 - 1927	C. J. KAUFMAN	A. L. PHILLIPS	C. R. INGMIRE
1927 - 1928	C. J. KAUFMAN	Glenn JACKSON	C. R. INGMIRE
1928 - 1929	C. J. KAUFMAN	Glenn JACKSON	C. R. INGMIRE
1929 - 1930	C. J. KAUFMAN	Glenn JACKSON	O. D. SIMPSON
1930 - 1931	C. J. KAUFMAN	Will AKERS, Jr.	O. D. SIMPSON
1931 - 1932	Frank HARRIS	Will AKERS, Jr.	Fred KAHRE
1932 - 1933	Frank HARRIS	Will AKERS, Jr.	Fred KAHRE
1933 - 1934	Frank HARRIS	S. F. CALVERT	Fred KAHRE
1934 - 1935	Frank HARRIS	S. F. CALVERT	Boydie E. HOKE
1935 - 1936	F. F. HARRIS	S. F. CALVERT	C. W. WINCHELL
1936 - 1937	G. L. COTNER	Harry G. BREES	C. W. WINCHELL
1937 - 1938	G. L. COTNER	Harry G. BREES	C. W. WINCHELL
1938 - 1939	G. L. COTNER	M. C. HULL	Lyle CRATTIE
1939 - 1940	G. L. COTNER	M. C. HULL	Lyle CRATTIE
1940 - 1941	G. L. COTNER	M. C. HULL	Lyle CRATTIE
1941 - 1942	G. L. COTNER	M. C. HULL	W. E. WADDLE

Continued next page

<u>YEAR</u>	<u>DIRECTOR</u>	<u>CLERK</u>	<u>TREASURER</u>
1958 - 1959	John PARKS	Gail JONES	T. C. IRWIN
1959 - 1960	J. PARKS	Gail JONES	Arthur F. MARTIN
1960 - 1961	J. PARKS	Gail JONES	Arthur F. MARTIN
1961 - 1962	Virgil SEGER	Gail JONES	Arthur F. MARTIN
1962 - 1963	Virgil SEGER	Gail JONES	Arthur F. MARTIN
1963 - 1964	Virgil SEGER	Bob LOFFER	Arthur F. MARTIN
1964 - 1965	Geo. CHAMBERS	Bob LOFFER	Arthur F. MARTIN

NEW AT THE LIBRARY

(Coffeyville Public Library)

Submitted by Betty HYER

929.1 THE SOURCE: A GUIDEBOOK OF AMERICAN
GENEALOGY

Edited by Arlene EAKLE and
John CERNY

Three Parts:

- I. Major Record Sources
- II. Published Genealogical Sources
- III. Special Resources

929.3 MISSOURI MARRIAGES TO 1850

By Linda BROOKS

Continued next page

- 929.3 CITIZENS OF MISSOURI 1787 - 1810
 By Frances T. INGMIRE
- 929.3 CITIZENS OF MISSOURI 1810 - 1812
 By Frances T. INGMIRE
- 929.3 CITIZENS OF MISSOURI TO 1835
 By Frances T. INGMIRE

CONSERVATION OF OLD PAPER

(Letters, Clippings, Documents, Etc.)

Submitted by Elizabeth FITZGERALD

(From a program given by Mrs. Dudley HENDERSON)

Remove staples, pins, or paper clips. Straighten out folds carefully and dust with soft brush. If dry and brittle, place in "relaxing box" with water so replace some moisture. Carefully use Pink Peral eraser to remove smudges or marks, holding paper firmly and working from the center to the edge, always in one direction instead of back and forth. Be sure all eraser is brushed from the paper.

Test ink or color with small bit of water and blot with white paper. If waterproof, make "deacid bath" of:

1. quart of very cold club soda
2. tablespoon of liquid Milk of Magnesia

Stir to dissolve completely and strain if needed through cheese-cloth. Pour into plastic, glass, or stainless steel pan large enough to hold the paper without folding. Support papers with a sheet of nylon screen that is bound on all edges with cloth or with Pellon fabric cut to fit the vessel you are using. Lower each paper with its support into the club soda solution. You can place as many layers as can be completely submerged in the sol-

Continued next page

Conservation of Old Paper contd.

ution. Leave at least 30 minutes but not longer than 60 minutes. Carefully remove with the support layers and pat with clean white paper towels. Place on clean white blotters or layers of paper towels and leave flat until thoroughly dry.

Seal in Mylar folders. If used with backing paper, be sure that it is non-acid or has been treated also to take out the acid. Seal with non-acid tape and store in non-acid file folders or notebooks.

In taking care of your photographs, do not handle so fingerprints are on the image. Wear clean gloves, if needed.

Do not pile photographs flat on shelves or drawers as the weight causes deterioration of those on the bottom.

Store the pictures on the edge, preferably in metal file drawers or in acidproof folders or envelopes, or in acid free print boxes.

Never store the print with the negative. If you have both and want to be able to identify, give them a number and store separately.

Be sure any albums made of plastic are Mylar quality as some polyester is destructive.

Do not paste into scrapbooks or albums that do not have acid free paper. Use inert (lacking a usual or anticipated chemical action) paste, such as Methyl cellulose.

Do not mend with pressure sensitive tape.

Do not write on the face of the photograph.

Do give all information possible about the photograph on the back. Use a very soft pencil and write on the edge if possible. Do not press to indent the image.

Do not use rubber bands to hold groups of photographs together.

As far as clothing, quilts, coverlets, etc., store as clean as possible. Do not use plastic covers as they do not allow the materials to breathe. Pad hangers with cotton and use cotton to cover. If storing for years, wash every four or five years, refold.

QUERIES

BURCH-BURTON

Hettie BURCH BURTON d Montgomery Co in 1872. Believe she is buried in Coffeyville or Caney. Her son, George BURTON lived in Caney 1870 census. Donna Lee HUGHES, Box 2115, Cut Bank, MT 59427.

CREAGER-RUPE-HODGES

Trying to locate grave and cause of death of Wallace CREAGER b and d 1904. Search census 1905 for W. D. CREAGER family. Also, RUPE and HODGES family in 1900 census. Caroline RUPE, P. O. Box 2273, Wichita, KS 67201.

RAY-BROWN-WILLIAMS

I am trying to find my grandparents who lived many years in Independence, Wilson RAY and Jane BROWN RAY, his wife. Also, James, Edna and Jessie RAY. Jane BROWN RAY and Harry WILLIAMS ran the WILLIAMS Hotel in Independence 1920 to 1935. Any info will be appreciated. Robert WARING, 4525 Brookslane, Carmel, IN 46032.

WHITE-CLOSSEN

My great grandfather, William C. WHITE, d in or near Coffeyville 9 Jan 1895. He may have been living with his sister Sarah CLOSSEN. Would like burial place. Phyllis B. HOKE, 13300-107 Los Coches Rd E, El Cajon, CA 92021.

SMIRL-DALTON

George Washington SMIRL was US Deputy Marshall in Caney where he was burnt out by the DALTON outlaws when they got out of prison. He then moved to California in fear of his life. Any info on SMIRL appreciated., Susan GIACHERIO, 1695 Woodstock, Canton, MI 48188.