

CHRONICLES of PRATT and PRATT COUNTY, KANSAS

A Republication of a Book
Published in 1911
by
The Pratt Commercial Club



A Project of
**THE PRATT COUNTY
HISTORICAL SOCIETY**

in co-operation with

THE PEOPLES BANK

PRATT, KANSAS

1972

GEN. 978.1815 T674
Tracy, A. C.
Chronicles of Pratt and
Pratt County, Kansas

MID-CONTINENT PUBLIC LIBRARY
Genealogy & Local History Branch
317 W. Highway 24
Independence, MO 64050

GE

CHRONICLES of PRATT and PRATT COUNTY, KANSAS

A Republication of a Book
Published in 1911
by
The Pratt Commercial Club



A Project of
**THE PRATT COUNTY
HISTORICAL SOCIETY**

in co-operation with

THE PEOPLES BANK

PRATT, KANSAS

1972

Chronicles of

P	R	A	T	T
---	---	---	---	---

and

Pratt County, Kansas

Published by

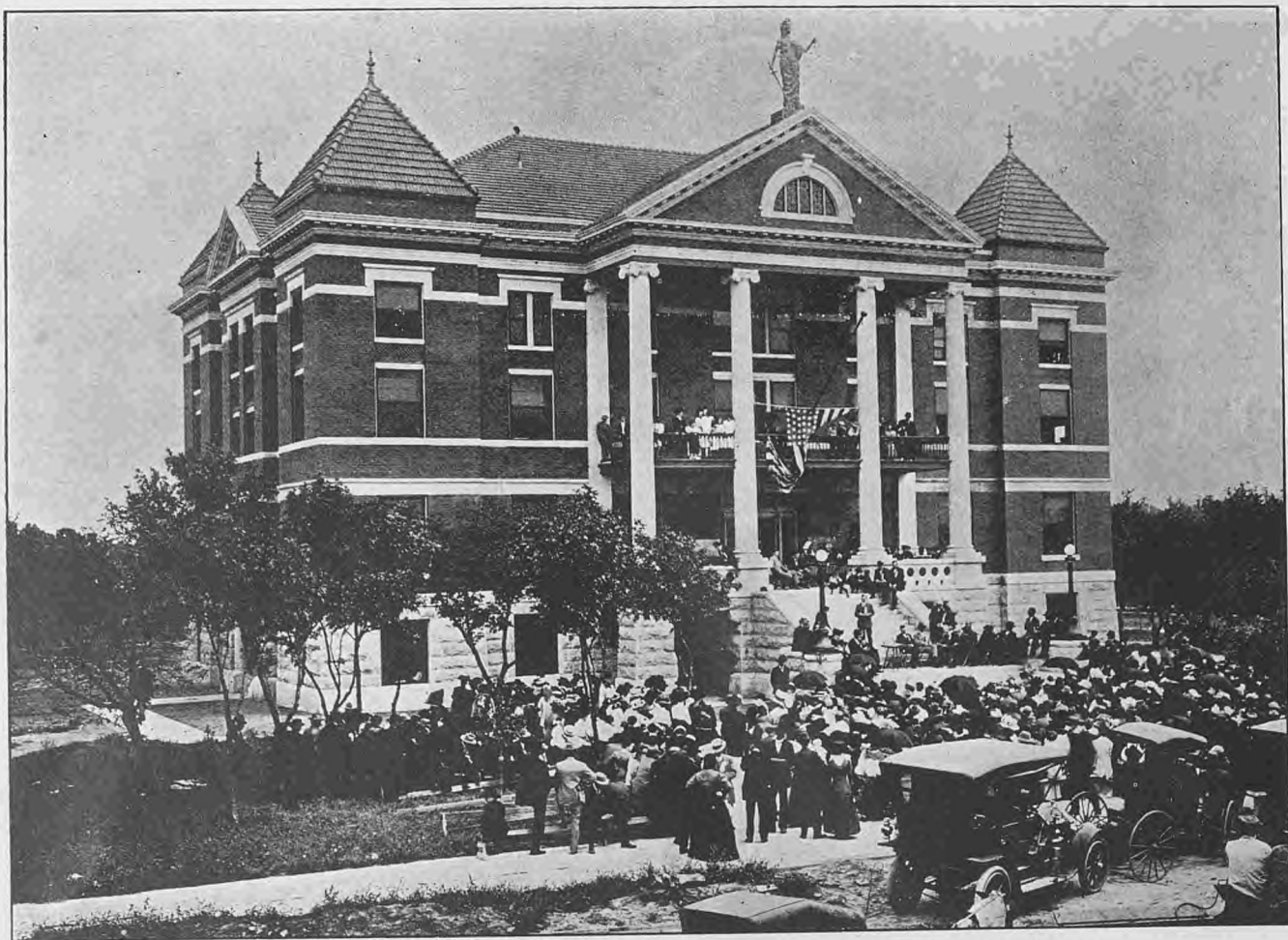
The Pratt Commercial Club

Compiled by



A. C. Tracy

SECRETARY

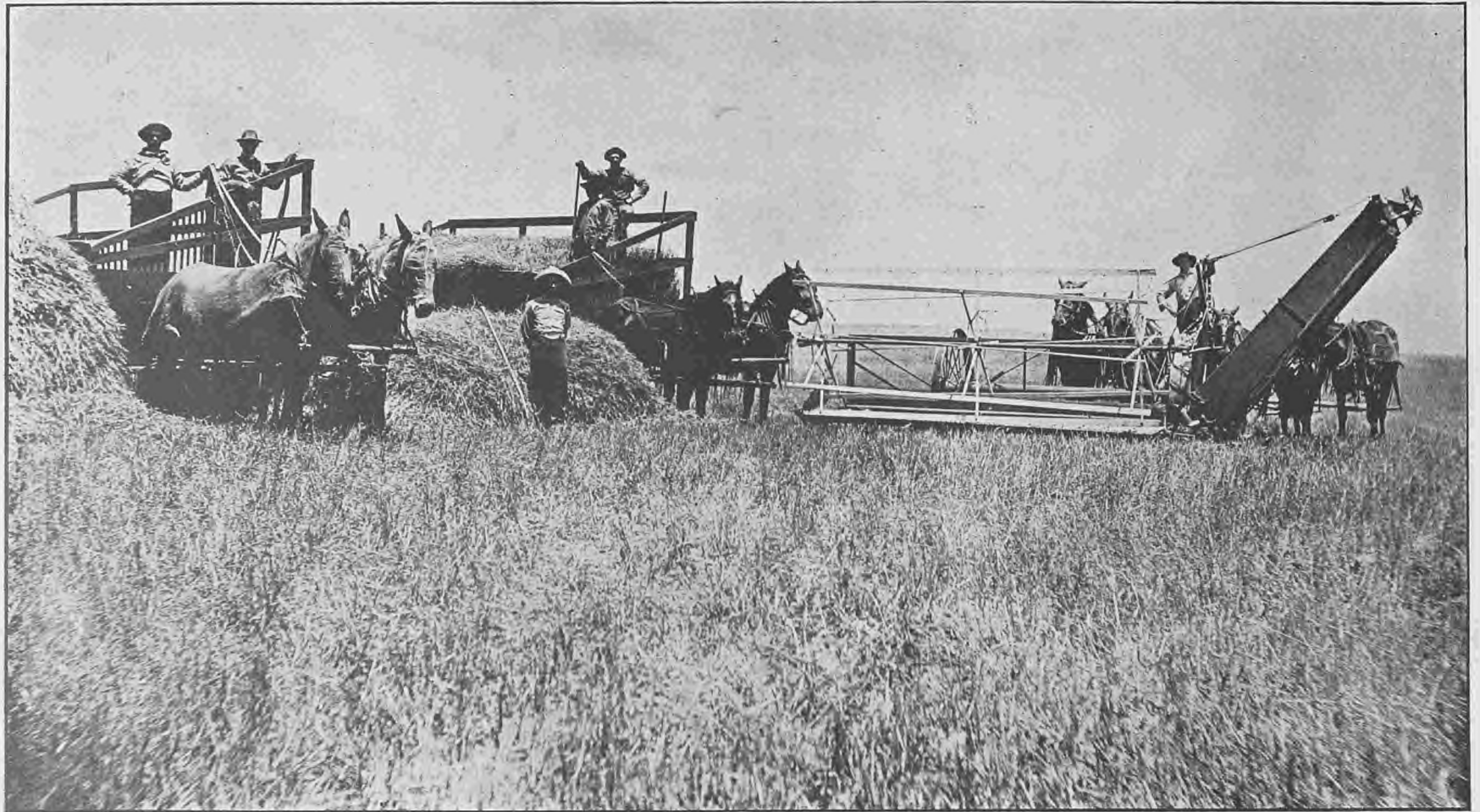


Pratt County Court House on Dedication Day, September 14, 1910, Pratt, Kansas.

PRATT COUNTY

Pratt County, Kansas, was organized in 1879, and has an area of 720 square miles, and a population of 10,546. The assessed valuation is \$25,705,667, while her rank in population is sixty-three, and she has a fraction less than ninety miles of main track railroad within her borders. The County seat of Pratt County is Pratt, which is one of the best little cities on Earth today, and which has a population of 3,420, which is rapidly increasing by leaps and bounds. Scattered all over the broad acres of this fertile county, are modern farm residences which will compare favorably with those of any section in the world. This is indisputable proof of the fertility of the soil, and the prosperity of the people. The year 1910 was not a banner year in Pratt County, but still she raised 2,682,144 bushels of winter wheat, for which she received in good hard cash, \$2,387,108.16. The total value of the farm products of the field in 1910 was in round figures \$3,194,098. This does not include poultry, eggs, butter, ani-

mals slaughtered and sold for slaughter, and income from all other sources, which combined bring the total receipts up to \$3,587,393.91. This seems to be a very fine showing for a county with a population of a little over 10,000. Only a small proportion of the available agricultural land has been sown to wheat, which is the staple crop, there being 460,800 acres in the County, of which only 167,634 acres were planted to wheat in 1910. More Alfalfa is being planted each year, and the bright green of the Alfalfa field is becoming quite a common sight in many parts of this favored County. The people are prosperous and hospitable, and newcomers are welcomed, and made to feel at home, while every effort is made to help each other. Taken altogether, there is not a County in all this country which can offer better inducements to the prospective purchaser of farm lands, than Pratt County can offer at the present time.



Harvest Scene in Pratt County, Kansas

PRATT, "THE GEM CITY"

Just eighty miles west from Wichita, lies Pratt, the County Seat of Pratt County, and the terminal of the Wichita & Western branch of the Santa Fe System. Ask the average traveling man what he thinks of Pratt, and the chances are a hundred to one that he will say: "Friend, there's the best little city of its size on Earth." You ask him why, and he will probably say, that he always does a good business when he comes to Pratt. And that is his idea of a good town. But at any rate it proves that Pratt is flourishing, and in a prosperous condition. There are many reasons why Pratt is not only a good place in which to do business, but also a mighty good place to live and bring up a family. There is plenty of good, clean cut social life, with churches of different denominations, a magnificent County High School which was recently erected at a cost of thirty-six thousand dollars, besides two other large graded schools, and a fourth school will have to be built shortly, in order to accommodate the increase in the number of school children during the past year. Then there is a beautiful and imposing County Court House, also recently finished, which cost one hundred and twenty-five thousand dollars. The Pratt Mill and Elevator Company has its headquarters at Pratt, and Pratt's Best Flour is known from one end of the country to the other. This company also owns the Electric Light and Ice Company. The State Fish Hatchery is located at Pratt and there has been a fund of one hundred and fifty thousand dollars recently made available by the legislature, for use in developing and improving the hatchery. Prof. Dyche, State Fish and Game Warden is preparing plans for a much larger hatchery, and is negotiating for the purchase of a large tract of land adjoining the present State property for the use of the hatchery. And every dollar of this will be spent within the next two years. Besides being the terminal of the W. & W. branch of the Santa Fe, Pratt is also an important division point of the Rock Island Railroad, the payroll of which alone is over thirty-five thousand

dollars per month. The beauty of the residence part of Pratt never fails to impress the stranger who sees the beautiful and artistic homes which line the principal streets, giving mute evidence of a general condition of unusual prosperity which has made Pratt famous. Nestling like a gem on the bosom of Mother Nature, with broad fields of golden grain stretching for miles on either hand, with the bright, fresh green of alfalfa field and blue grass meadow, showing in perfect contrast, and lending added beauty to an already wondrous sight, it is small wonder that Pratt has been called by many, "The Gem City." With its broad and busy Main Street, and its many beautiful residence blocks, with church spires towering toward Heaven, and the large and well equipped school buildings beckoning the children towards the fount of knowledge, it is impossible to conceive of a place more suited to the upraising of a family. Pratt now has a population of about 4,000, two railroads and a third about to build; is a division point on one, and the terminal of another. She has unexcelled schools and churches, and a modern, well equipped and paid Fire Department. Pratt also has the best and purest water supply in the state, besides an ice plant, and an electric light and power plant that is thoroughly up-to-date and modern. She has well kept wide streets, and many miles of fine concrete sidewalks, numerous grain elevators, and three large and prosperous lumber yards. On both sides of her busy Main street are hustling business houses representing all lines of retail business. Her Commercial Club is an aggregation of boosters such as few towns possess, and they are working at all times for the good of Pratt. The city is now running under the Commission form of Government, and great improvements are expected for the coming year. A charter has been obtained for a broom factory and broom corn warehouse, which is expected to start operations in the near future and this is only a forerunner of other industries to follow. Surrounding the city on every side are thousands upon thousands of acres of the best farming land in Kansas, for which Pratt is the distributing point. Sum this up and the answer is, "Pratt is the best little city of her size on Earth."

GE PRATT'S SCHOOLS

When the head of a family is seeking a location in which to establish a home, one of the first essentials that is investigated, is the educational advantages to be offered by a community. Pratt county and city have modern, well equipped, ably instructed schools that are maintained on the same high standard to be found in all parts of the state of Kansas. There is a total of seventy-six buildings to be found in the seventy-three districts in Pratt county, there being three buildings in Pratt, two in Coats and the remainder are known as rural schools. In the year 1910 there was an average attendance in the country schools of 2,013 while the average in the city of Pratt was slightly in excess of eight hundred. These figures were materially increased at the opening of the present term, in all the different schools. The total value of school property in the county is approximately \$130,000; exclusive of real estate, this amount covering only the buildings and equipment. During the year 1909, a magnificent high school building was erected at a cost of \$40,000, and it is equipped with everything needed

in the work of modern education. The high school classes are instructed during a four year course by seven capable teachers, and last year a Normal course was added. There are one hundred and four teachers in the county including those in the city of Pratt, of whom there are twenty-two. A diploma from the Pratt County High School admits to any of the state educational institutions for the Freshman year without any further examination or requirements. The school board of Pratt county is made up of progressive business men, who take a pride in the schools and keep them thoroughly up-to-date in every department. The teachers are a hard working, conscientious body of educators and the results of their efforts can be seen in the bright, intelligent young men and women, who will some day be the active citizens of the city and county. There is no county in the state that offers better advantages for the proper education of children than does the city and county of Pratt, and each succeeding year the schools are made more desirable in their advantages and possibilities.



Pratt County High School Building, Pratt, Kansas.



North School Building, Pratt, Kansas.



South School Building, Pratt, Kansas.

CHURCHES

Pratt is blessed with a number of fine churches, the members of which are workers in a religious field which in the early days offered unlimited opportunity for their best efforts. How well they have succeeded is noted by the beautiful and

true Christian fortitude, and can now point with pride to Pratt, as being a city of home-loving, church-going, religious people, a city offering every advantage in a religious way, for the proper rearing of children. Nearly all denominations



A Group of Pratt Churches

spacious houses of worship which are found in all parts of the city. Some of the churches were organized at a time when the future appeared to be anything but promising. However, by persistency and concerted effort the pioneers in religious work in this county met every obstacle with

found in any of the cities of the state have good representation here. Baptist, Methodist, Presbyterian, Christian, Catholic and the Church of Christ denominations have their own church buildings. There are also Afro-Methodist and Afro-Baptist churches in the county.

PRESBYTERIAN.



Rev. J. M. Leonard.

The First Presbyterian Church of Pratt was organized in June 1884. For a long time after the organization was perfected, it was necessary for the little band of members to hold services in store-rooms, public halls or in fact anywhere that sufficient space could be found indoors, for an assembly of a dozen or more persons. In 1886 steps were taken which resulted in the building of a house of worship but only after a great deal of hard work—made hard by poor business conditions and other drawbacks. This was done during the pastorate of Rev. Andrew Axline. The church was dedicated March 3, 1889, and was entirely free from debt. There have been several ministers in charge of the church work here, and the present pastor, Rev. J. M. Leonard took up the work four years ago. Under his pastorate the church has grown steadily in influence and membership, until now the roster contains the names of 230 people. Within a short time work will begin on a new \$20,000 church building and a manse to cost \$4,000. The church supports a Ladies' Aid Society, Women's Missionary Society, Men's Brotherhood, a Y. P. S. C. E. and a Sunday School that has a membership of 212. The church has been supporting as its foreign pastor Dr. David A. Murray of Osaka, Japan, for the past three years and hopes to continue the same as a permanent work.



FIRST BAPTIST CHURCH.

The First Baptist church of Pratt was organized March 19, 1887 with twelve charter members of whom Mrs. Harriet A. Shrack is the only resident survivor. The pastors have been Rev. J. H. Mize, called October 9, 1887; Rev. J. B. Reynolds, June 30, 1888; Rev. N. H. Ward, June 1, 1890; Rev. J. H. Gashwiler, October 4, 1891; Rev. J. Y. Montague, March 29, 1893; Elder Christman, May 16, 1896; Elder James Tanner, July 16, 1899; Rev. W. T. Gordon, December 8, 1900; Rev. Willy K. Estill, August 9, 1902; Rev. Dr. Lee T. Fischer, November 8, 1905 and Rev. Edmund Clay Jenkins, September 5, 1910.

Reverend Jenkins, the present pastor, is a graduate of the 1910 class of Colgate University, Theological Seminary, Hamilton, New York.

The church membership has steadily grown from the original twelve to two hundred and fifty-nine and the church has a large and progressive Sunday School of which P. M. Gates is superintendent, which position he has occupied since 1902; a Baptist Young Peoples' Union of which Miss Una Hodges is president; and a progressive Woman's Missionary Society and Ladies' Aid. The present church building was dedicated free from debt August 27, 1905, and the parsonage, on the adjoining lot, was purchased in 1910.



Rev. E. C. Jenkins.

METHODIST CHURCH.



Rev. H. L. Gleckler, Pastor of the
Methodist Church, Pratt, Kansas.

The First Methodist Episcopal Church was organized in March 1885, and within a year the members had their own house of worship. The history of this church has been filled with many examples of self sacrifice and hard individual effort. In April 1895 the church building was burned to the ground, but the ashes were hardly cool before work began which resulted in the erection of a better and larger building, which is located on the corner of Jackson and First streets. Twice additions have been builded to the old building to provide room for the growing congregation. The present membership is 407; the Sunday School averages in attendance near two hundred, and taxes the capacity of the church to the limit. The Epworth League is well organized and does a splendid work for the young people. The Ladies' Aid and Woman's Foreign Missionary Society are active auxiliaries in the work of the church. A large new church building is being planned, and it is possible the work on the proposed edifice will be commenced before the end of 1912. The present pastor, Rev. H. L. Gleckler, has been in charge for one year.

SACRED HEART CATHOLIC CHURCH.

The humble beginning of the present congregation we trace back to the years of 1880 or 1882. The first Catholic priest who ministered to the wants of a few scattered families surrounding the city of Pratt was Father Hartman from Hutchinson, Kansas. It was about the year 1882 when Father Hartman's first visit was made in the neighborhood of Pratt. Services were held at first about once a year, and later on every six months at the homes of B. McCann, J. Carr, John and Pete Mass and others who have since cast their fortunes in other climes, or departed to the great beyond. In those frontier days Catholics formed but a small part of the population. Self-sacrificing and conscientious, many of them came for miles to receive the blessings and consolations of religion. The few scattered families were next attended by Father O'Connor, of Wichita about the year 1885. Their place of worship was at Saratoga at a certain Mrs. Morgan's home and later in some public building. About this time their numerical strength increased to thirteen families. Their next move was to accommodate their increased membership. Pratt was selected as the most suitable locality to build a church. Sad to relate, the first fruit of their efforts was destroyed by a cyclone. Not discouraged however, they set to work again, this time erecting the present old church now used as a parish hall. This was built by Rev. Walsh about 1887. During the interval that followed several pastors had charge of the congregation, some coming from Wichita, others again from Dodge City and Kingman. Their respective names were Fathers John Begley, Lenahan, M. Mennis, Maloney, Joyce and A. Walsh. Of these Fathers John Begley and A. Walsh are better known. The present magnificent new brick church was built and completed by the latter in 1908. Its cost is estimated at \$11,000 and reflects credit upon the community. Tuesday, Sept. 22, 1908 it was dedicated by Rt. Rev. John J. Hennessy, Bishop of Wichita, assisted by Mgr. J. H. Tihen and Fathers A. Walsh, Monnier of Wichita



Father Schneider.

and Geo. J. Schneider of Waterloo, Kansas. Father A. Walsh remained rector of the congregation until Nov. 16, 1910, when given sole charge of Kingman and Turon. His successor, Father Geo. J. Schneider is the present residing rector of the congregation. It numbers about thirty families. A suitable brick rectory and other improvements are being contemplated in the near future.

THE CHRISTIAN CHURCH.

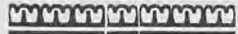


Rev. J. W. Jones, Pastor Christian Church, Pratt, Kansas.

Another of the pioneer Churches of this community is the Christian Church, which was organized in August 1884, with a charter membership of twenty-four. Several of the charter members are now a loyal support, and are highly honored members of the Church. It is to these members that much credit must be given, for the flourishing condition of the Church financially. During the last two years, added improvements have been made, amounting to about \$2,800, which has added greatly to the comfort of its growing congregation. The Christian Endeavor numbers among its members about thirty active and bright young people, who have done much in favor of Bible education and Foreign Missions. The Sunday School has a membership of 150, and the Ladies' Aid is not only a true aid, but has become a most enjoyable social feature towards which all look with delight. The Rev. J. W. Jones is the Pastor, and his heart and soul are in his work, he is well liked by every one, and he is in perfect harmony with the Church Board and the members of the Congregation.



Grier Hotel Dining Room, Pratt, Kansas.



THE GRIER HOTEL



An establishment of which the people of Pratt County and the traveling public are justly proud is the Rock Island Eating House located just west of the Rock Island depot. It is known as the Grier Eating House to the traveling public, as it is owned and run under the management of the Grier Hotel Co. It was in May 1908 that it was opened to the public and the opening was a memorable event in the history of Pratt during that year. It is conducted along the same lines that distinguish the Grier eating houses wherever they are operated. Here one can obtain all that the market affords in the way of delicacies and staple foodstuffs. The employees are experts in their respective lines, resulting in unsurpassed service, and guests are assured of every attention from the time they enter the door until they

pay their check at the cashier's desk. Regular meals are served to passengers on trains 32 and 34 and a lunch counter is open at all hours. The food served at this establishment is selected by men of years of experience and must be absolutely pure and wholesome to be served here. During the two years and a half of its business in this city it has always maintained the same standard of excellency in all departments, and Grier House coffee is a subject of much favorable comment among passengers on trains that stop here for lunch or regular meals. The place is now under the management of F. H. Favreau, who has been with the Grier Company for 3 years. He gives personal attention to the place and has made of it one of the leading eating houses and hotels of Kansas.

BANKS



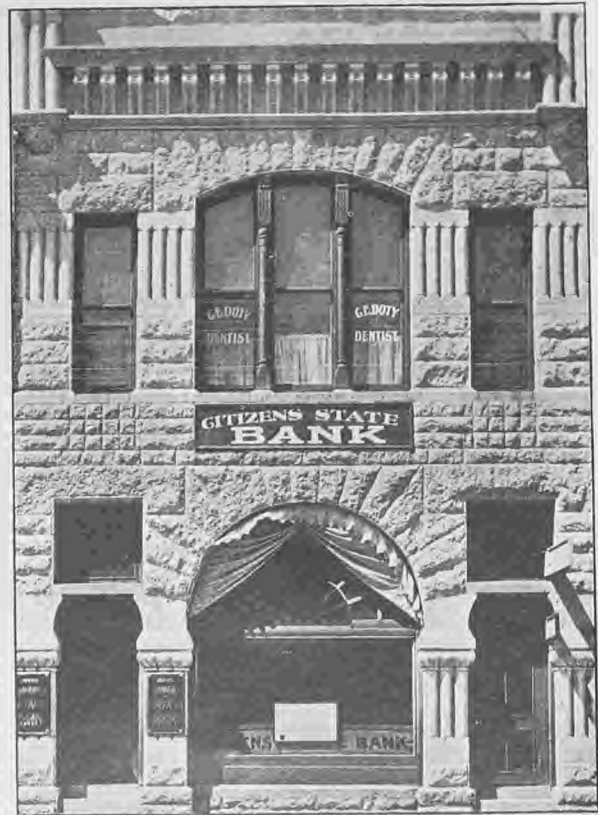
**NATIONAL BANK OF PRATT,
PRATT, KANSAS.**

The National Bank of Pratt was established in 1902, and has the distinction of being the only National Bank in Pratt county. The bank occupies its own large and substantial brick building, a picture of which may be seen in the above picture. The Officers are Mr. Geo. W. Lemon, Presi-

dent; Mr. H. A. Barbee, Vice President and Mr. O. H. Bock, Cashier. The Directors are H. A. Barbee, O. H. Bock, E. L. Barbee, Geo. W. Lemon, and H. Warren. The Capital is \$50,000, and the Surplus and Profits are \$10,000. This bank is one of the main financial institutions of South-western Kansas, and is known as an exceptionally conservative and safe bank with which to do business.

CITIZENS STATE BANK, PRATT, KANSAS.

A city is often judged by its financial institutions and in the Citizens State Bank of this city, Pratt has an establishment that ranks well up in the financial life of the state. This bank has a capital stock of \$25,000 and the surplus shown on its last statement was \$3,000. The directors of this bank are substantial business men of Kansas and Pratt County and are as follows: Geo. S. Hovey, Kansas City, President Inter-state National Bank; W. S. Tinsman, Chicago, General Manager C. R. I. & P. Ry.; J. M. Hellings, Jr., Coats; Geo. R. Smith, Pratt; Geo. R. Blair, Pratt; E. L. Shaw, Pratt; C. C. McMichael, Pratt. This establishment does a general banking business and depositors are granted every favor consistent with conservative, safe banking methods. The officers of the company are J. M. Hellings, Jr., President; E. L. Shaw, Vice-President and C. C. McMichael, Cashier. This bank offers every advantage to customers and the business is growing larger every week. This is due to the confidence that has been established among the people of Pratt county.





W. H. Shrack & Sons' Jewelry and Clothing Departments, Pratt, Kansas.

W. H. SHRACK & SONS.

Over twenty-five years ago W. H. Shrack came to Pratt and established what was then known as the Post Office Book, Stationery and News Store. As soon as his three sons finished school, the business was enlarged and today the large stocks of Jewelry and Clothing which are run under the name of W. H. Shrack & Sons, and the immense Drug Stock, under the name of the Owl Drug Store are places of which they have reason to be proud. W. H. Shrack, the father, was at the head of all three concerns until he passed to the great beyond in February 1908, since which time the business has been in charge of the three sons, Homer looking after the Drugs, Sam the Clothing, and Orville the Jewelry. You are always given a pleasant reception at either store, whether you wish to buy anything or not, making you feel that you are glad you have been there.

PRATT AS A JOBBING POINT.

That Pratt is ideally located as a jobbing point for a large and prosperous territory, is conceded by all who are familiar with existing conditions. Situated as she is, with Hutchinson fifty-three miles east, and Wichita eighty miles east, and with no jobbing point within the state line of Kansas to the west, it is a foregone conclusion that in the near future, some far sighted business men or firms will realize the possibilities for profit, which lie in the location of a jobbing house in this

beautiful and prosperous little city. When one line of goods is represented, it will only be a short time until other jobbers in different lines will locate here. The City of Pratt is growing fast, and is in a most prosperous condition, and there is no disputing the fact, that the bulk of the enormous western trade which now goes to Wichita and Hutchinson would be diverted to Pratt, through the saving in freight, and the quicker receipt of goods.

H. S. GREGORY.



Bakery and Confectionery of H. S. Gregory, Pratt, Kansas.

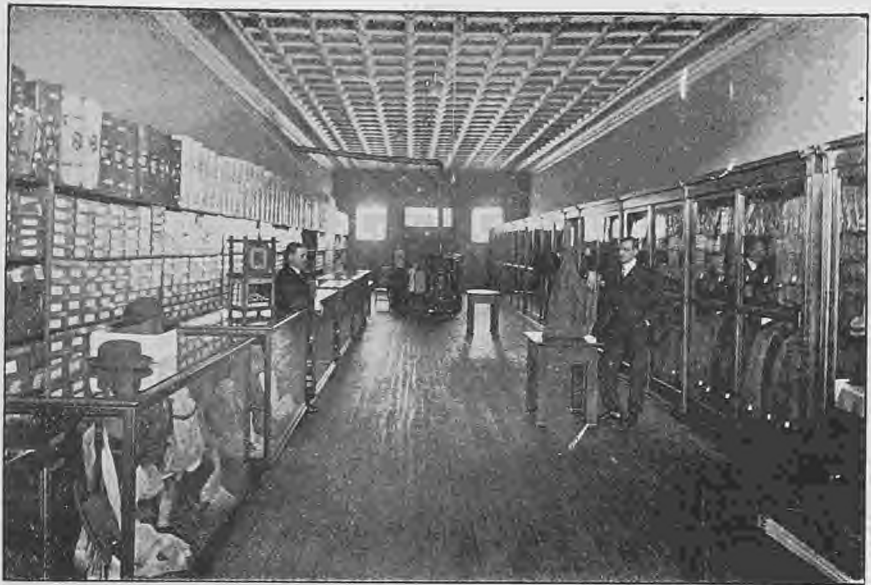
Some men are born with a tendency to hustle, and they cannot help being strenuous in all their daily life and actions. Such a man is H. S. Gregory, the subject of this sketch. Mr. Gregory was born in Indiana, and came to Kansas twenty-eight years ago. He settled in Garden City, where he owned the Garden City Sentinel for over twelve years, after which he came to Pratt, and has been a resident of that city for fourteen years. Twelve years ago he started the Arcade Restaurant, to which he added a bakery about seven years ago, and he conducted both businesses until about three years ago, when he sold out his restaurant interests and today conducts the bakery alone. He also carries on a thriving business in fancy fruits, vegetables and confectionery. On occasions when cut flowers are necessary, Mr. Gregory

supplies them, being local agent for the leading florists of Wichita. He is also Manager of the Pratt Opera House, and has done much to induce a better class of shows to come to Pratt. He also served for two terms as a member of the School Board. Taken altogether, Mr. Gregory is a man of many enterprises, to all of which he gives his energy and time, and as a result has prospered. He has considerable property in Pratt, and is a good all around citizen. He has worked harder than the average man, and deserves everything he has earned.

The fixtures which he has installed in his bakery cost him about six thousand dollars and he has one of the finest soda fountains in Kansas. He is popular in Pratt, and is always ready to boost, and forward any movement for the benefit of his home community.



K. C. HODSON



Reed & Hodson Clothing Store, Pratt, Kansas.

Pratt may be said to be especially fortunate in the character of her younger business men, and prominent among this class must be mentioned the subject of this sketch. K. C. Hodson, of the Reed & Hodson store, is endowed with a sound and comprehensive judgment, a tireless energy and a laudable ambition, and governed by principles of sterling integrity—and by those qualities, was not long in acquiring a just position among the live and energetic business men of the community. Mr. Hodson is a clothing man of experience; he started in the business 16 years ago at Carthage, Mo., and later came to Kansas and Newton, where he was for eight years, connected with his partner, Mr. Reed. Near the close of 1910 he came to Pratt and opened up the splendid establishment which he now conducts. In this store one can find a stock equal to any in existence any-

where. The secret of this fact is that it is one of a string of stores well organized—the goods are carefully selected; and as they are purchased in exceptionally large quantities—and for cash—can be and are sold much cheaper than inferior goods bought by individual merchants. The stock carried by this store comprises selections from well-known makers, such as Kuppenheimer, Schloss Bros., and Clothcraft Clothes for men and little men; Stetson and Gimbel hats; Florsheim and Burt & Packard shoes; Eagle & McDonald shirts and last but not least, the celebrated Penn Union Made Clothes. From the foregoing enumeration one can readily arrive at the conclusion that Reed & Hodson carry a complete line of the best in clothing and furnishings for Men, Boys and Children, which has given their store the name—“The Home of Best Clothes.”



Bake Shop
of
H. T. ARBLE,
Pratt, Kan.



Mr. Arble is another pioneer of Pratt, Kansas, and is engaged in the Bakery and Restaurant business. He is also an Abstractor, and does considerable business in that line. Above is shown a picture of Mr. Arble's bake shop, where he

turns out his famous bread and cakes, and pies. He has many regular patrons for his restaurant, and also does a large business supplying the citizens of Pratt with their daily bread.

W. E. JETT
MERCANTILE CO.,
PRATT, KANSAS.
Clothing, Shoes and
Gents' Furnishing
Departments



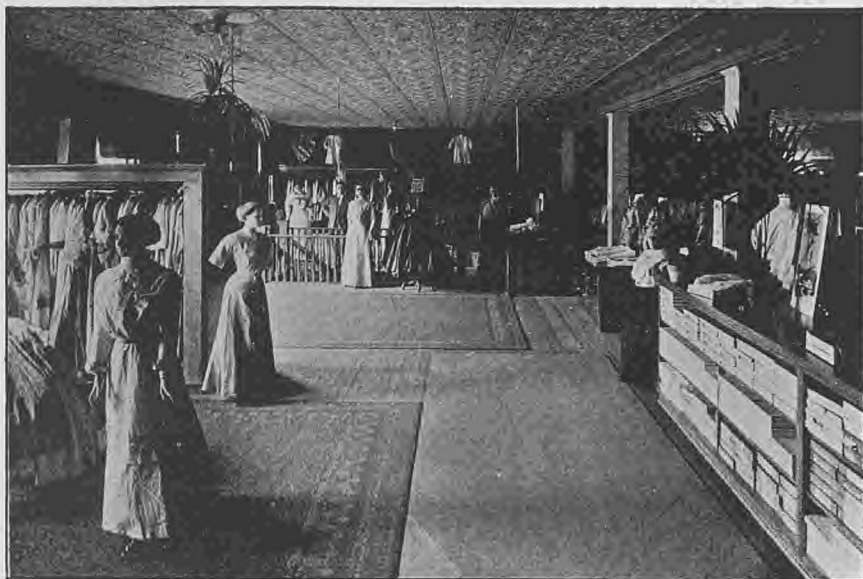
It has only been in recent years that a modern, up-to-date department store could be found in the smaller cities. In 1906 such a store was established in Pratt, Kansas, by the W. E. Jett Mercantile Co. This store from the day of its opening has caught the popular fancy, and its growth has been phenomenal. The pictures of the different departments which are reproduced in this book, can give but a small idea of the mammoth proportions of this great establishment. As one passes the portals and enters the building from the front he or she cannot help but be amazed at finding such a store in a city the size of Pratt. Once inside, it is very easy to imagine yourself to be within one of the great Metropolitan establishments of one of the larger cities of the country. On the right you will see the Clothing and Gents' Furnishing department, including shoes for both men and women, for the shoe department is just beyond the Clothing and Furnishings. Take a walk through these aisles and you will be still more surprised at the large and complete lines that are shown. Leading brands of the best known manufacturers of clothing are shown on modern hangers and in the latest improved revolving glass show cases. Among these will be seen a full line of the famous Hart, Schaffner and Marx clothing, which has become a household word in every state in the Union, and of which this firm makes a specialty. Behind the show cases packed with neck ties, cravats, socks, and a hundred and one odds and ends of masculine haberdashery, may be seen rows upon rows of shelves, extending from the front of the department to the rear, piled high with shirts, underwear, more hose, collars, pajamas, and all the other lingerie that go to fill a man's wardrobe. Turning to the north on the front or rear aisle, and you pass from this Mecca for men into a dry goods department which would be a credit to a metropolis. Here may be seen about everything that delights the heart of women, and the prices shown are wonderfully reasonable. Silks and satins, ribbons and

laces, ginghams and linens, and all the fluffy ruffles that you admire so much on your wife or sweetheart are shown here in reckless profusion. Of course, there are a countless multitude of articles that space will not permit me to mention, but the ladies will know what they are. Suffice it to say, that nothing is lacking that is usually found in the dry goods department of a first class department store. In the rear of this bazaar of many bargains for the ladies, is a wide stairway leading to the cloak, suit, millinery and house furnishing departments on the second floor. Ascending the stairs we come first to the cloak and suit department. Again we are astonished at the completeness of this Twentieth Century establishment. From the glistening plate glass mirrors on the walls, and standing in individual frames at convenient points, to the sumptuous rugs covering the floors, and the latest things in cloaks and suits that are in stock, there is every appearance of being in one of the large city stores. And it is no more than truth to say, that there are many stores in the largest cities, that cannot compare with this one that I am describing. The front half of this immense floor space is occupied by the Millinery Department, which is managed by the best milliners money can bring to Pratt. The same sumptuous furnishings, and attention to details, makes this department a fitting companion for each of the other departments described. Here is shown nothing but the very latest in hats, and the stock carried is immense, as it must needs be to keep pace with the large trade which comes to this department, owing to its popularity with the ladies, a popularity which is growing.



From this department we turn to the south part of this floor where we find the house furnishing department with its magnificent showing of large and small size floor rugs from the cheaper qualities of tapestry to the better grades of Wilton velvets, linoleums and all kinds of lace curtains, draperies, window shades, curtain rods, couch covers, portiers, quilts and blankets.

Dry Goods Department
W. E. Jett
Mercantile Co.,
Pratt, Kansas.



Cloak and Suit Department (2d floor)
W. E. Jett Mercantile Co., Pratt, Kan.

in fact, a line of up-to-date furnishings that would be a credit to the large furniture stores in our large cities.

Descending the stairs again, we turn to the right and pass into the grocery department. Here may be seen all the delicacies of the season. Everything in fancy and staple groceries is on display, all kinds of canned goods, condiments and preserved fruits in bottles and jars, and in fact everything that the mind can conceive that rightly belongs in a well equipped grocery department is found here on counter and shelf. In this department, as well as in all others of this establishment, there are special sales going on very often, when a great many unusual bargains may be found, and much money saved. Beneath all these departments, which occupy over 11,000 square feet of floor space, there is an immense basement and storage room, which extends under the entire building. From present indications, if the increase in the volume of business continues, it will either be necessary to add another floor to the main building, or utilize the large basement for salesroom purposes in order to accommodate the growing needs of the business. When a business enterprise such as the W. E. JETT MERCANTILE CO. attains such marvelous success in

such a short space of time as has elapsed since it was established, there must be some reason for it. And the reason is not far to seek. It is due to the management of the Farmer Brothers, A. S. Farmer, L. D. Farmer, and J. E. Farmer. Each of these enterprising young men has devoted every bit of energy he possesses to make a success of this business. Each has his own department and line of work, into which he fits as naturally as a key into a lock. Mr. A. S. Farmer does most of the general buying, takes care of the financial end, and exercises a general supervision over the entire business. Mr. L. D. Farmer does all of the buying of Gents' Furnishings, Clothing and Shoes, and manages these departments. And Mr. J. E. Farmer assists in the Dry Goods buying, does all of the card and ticket writing, is a most artistic window dresser, and has charge of all of that work, and in addition is manager of the Dry Goods Department. These young men have attained a prominent position both in business and social circles, and Pratt is proud to number them among her best citizens. Naturally they are proud of the establishment which owes much to their management, and they are always pleased to receive visitors and show them over the store.



Grocery Department
W. E. Jett Mercantile Co., Pratt, Kan.



Built by H. W. Duckworth.

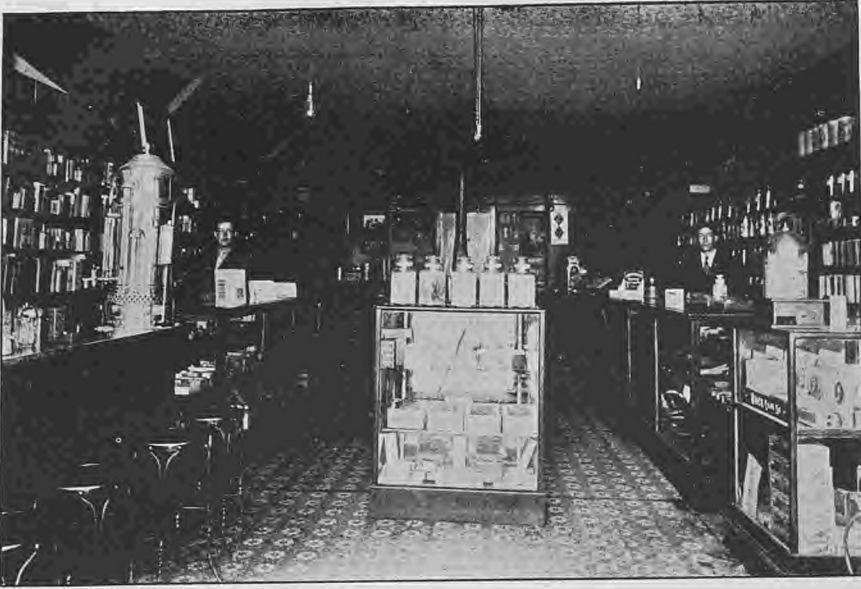
Residence of Hon. Thad C. Carver, Pratt, Kansas.



Peoples Bank, Pratt, Kansas.

THE PEOPLES BANK

The oldest bank in Pratt county is The Peoples' Bank. This is regarded as one of the most solid banking institutions in the southwest. It was established in 1887, and has a capital of \$55,500. The officers are: Thad. C. Carver, Pres.; C. L. Cramer, Cashier; Albert Coe, and E. F. Tellman, Bookkeepers. Since coming under the able management of Mr. Carver this bank has grown and prospered until now it occupies an enviable position in the banking world.



THE CORNER
PHARMACY,

Pratt, Kansas.

LETRIDGE & LETTRIDGE.

This firm consists of Charles Lettridge and his mother, Mrs. Doctor Lettridge. They have established a fine drug business which is known as the Corner Pharmacy. Charles Lettridge is a registered pharmacist, and he pays particular attention to prescriptions. They carry a full line of

drugs and sundries, toilet articles, stationery, school supplies, and everything usually handled by a first class drug store. The firm is popular in Pratt, and while the business has only been established about two years, it has grown considerably, and stands well among the business institutions of Pratt.

Residence of Wm. Osgood, Pratt, Kansas.



McMEEL, BOEHLER & CO.

The clothing and furnishing goods store at 214 S. Main street, owned by the firm of McMeel, Bohler & Co., has been doing business in this city for the past four years and their stock includes all the leading brands on clothing, shoes, hats, etc., to be found in stores in cities much larger than Pratt. The shoe department carries such well known brands of shoes as the Packard and Stetson shoes that are worn by the best dressed men in all parts of the country. In the clothing line the well known assortment of W. S. Peck of Syracuse, New York is kept in stock, in all the latest designs and every garment is guaran-

teed as to material and workmanship. The Cluett brand of collars, cuffs and shirts are sold at this store as well as a complete assortment of the Arrow brand of collars. This store is also the home of the "Sweet Orr" trousers—trousers that are known from one end of the country to the other for their resisting qualities. The store is under the management of W. C. Osgood who came here when the store was established. He has had years of experience in the clothing and furnishing goods business and conducts the business of this store along progressive lines. The motto of this store is "Everything the Best for the Man, Youth, in Clothing and All Kinds of Wearing Apparel."

RAILROADS

Pratt is well fixed as far as Railroads are concerned, as she is the western terminal of the Wichita & Western Branch of the Santa Fe System, and is an important Division point on the Rock Island Road. The final track survey has been made for the Kansas & Southeastern road, of which Pratt will be the Headquarters, and a Division point, Round Houses and Machine Shops

will be located there. And in addition to this it is expected that before long the Missouri Pacific road may be induced to build the six miles necessary to complete that road from Iuka to Pratt. Then Pratt will have four lines of railroads entering the city and will have north and south, and east and west connections, which will make her flourish like the proverbial Bay tree.



THE ELITE THEATRE.



Elite Theatre, Pratt, Kansas—C. F. Bays, Proprietor.

As an amusement enterprise, the Elite Theatre occupies a prominent place in the hearts of the show going people of Pratt. This pretty little Theatre is owned by C. F. Bays, who has over Ten Thousand Dollars invested in the property, and has spared no expense to make this a place of enjoyment for his patrons. Only the best of Films are shown and no shows are booked without a reputation behind them. The place is maintained with the sole idea of catering to refined people and nothing that could offend the most fastidious people is ever shown here. Only Films made by such well known people as the Essanay, Selig, Biograph, Lubin, Vitagraph, Pathe, Edison, etc., are thrown on the screen of this house. The

Elite Theatre caters especially to the women and children whose patronage is solicited and their comfort and welfare will be carefully looked after by the management. When you come to the Elite, bring the whole family with you as there will be plenty to interest them all. In addition to the Elite, Mr. Bays has just opened an Airdome, with a seating capacity of 900, which will have some of the finest attractions on the circuit all through the season. Some of the bookings already made will afford the Pratt people a chance to see some of the best attractions which have ever come to Pratt. Such a man as Mr. Bays deserves the support of the people in his efforts to bring Pratt up to now in the way of public amusement.



CLOTHING AND
GENTS' FURNISH-
ING GOODS DE-
PARTMENT,

REED DRY GOODS
COMPANY,

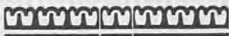
Pratt, Kansas.



THE REED DRY GOODS CO.

About two years ago when The Reed Dry Goods Co. was established in Pratt, few people thought that in such a short space of time it would grow to its present proportions. Starting with one store room, with a frontage of twenty-five feet, and an ordinary window front that was far from being modern, under the able management of Andrew J. Reed, they have grown until they have

absorbed the adjoining building, and taken on another annex in the rear, which is now occupied by the millinery department. Recently the entire front of fifty feet has been remodeled and the entrance is now in the center, with immense modern show windows on either side of the door. There is a deep arcade for the entrance which lends a most modern and metropolitan appearance to the establishment. The Clothing, Gents' Furnishing, and Shoe Departments are on the right of the



DRY GOODS
DEPARTMENT,

REED DRY GOODS
COMPANY,

Pratt, Kansas.



entrance, and in these departments will be found everything usually found in the best equipped stores of the large cities. This firm makes a specialty of the "Class A" brand of clothing, which is manufactured by the well known firm of Solomon & Lamport, of Rochester, New York. They show a most complete line of Gents' Furnishing Goods so that a man may be outfitted at this up-to-now establishment from head to foot with all that is new and fashionable in men's wear-

tion that exists throughout this entire establishment. Cloaks and Suits are just as fully and completely represented as all the other lines carried by this enterprising firm. Mr. Andrew Reed, the genial manager of the store, has been in the retail dry goods trade for about five years, previous to which time he was on the road for the Johnson-Larimer Dry Goods Co., of Wichita. So he knows the dry goods business both from the standpoint of the jobbing salesman and the retail



Mrs. W. F. Banbury's Millinery Department, Reed Dry Goods Co., Pratt, Kansas.

ing apparel. In shoes he will find a full and most complete line of Friedman and Shelby shoes, and for the youngsters there is a full assortment of the celebrated "Red Goose" shoes for school wear. Then in the Dry Goods Department on the left as you enter the store, the lady shopper will find everything that she can possibly wish to purchase, as this stock is as full and complete as experience and money can make it. This is the same condi-

buyer. This knowledge of both ends of the business has contributed greatly towards the success which has attended his management of the business of the Reed Dry Goods Company, and from present indications it seems likely to continue. "A thing well bought is half sold," is an old saying but a true one, and Mr. Reed certainly knows how to buy right.



C

**F. A. MILNE'S
 RED CROSS PHAR-
 MACY AND PHOTO
 SUPPLY STORE,**

Pratt, Kansas.

C

FRANK A. MILNE.

Frank A. Milne was born at Belleville, Ill., and came to Pratt in 1907, and entered the drug business under the firm name of The Red Cross Pharmacy. The business has grown and enlarged from the first, until now Mr. Milne has one of the leading drug stores of Pratt county. He also carries a full supply of Kodaks and photographic supplies. In this latter line he also does a very large busi-

ness as he is the only one in Pratt who handles these goods. He also carries a complete line of toilet articles, sundries and drugs, and in fact everything that a first class drug store handles will be found at The Red Cross Pharmacy. Mr. Milne personally is well liked by all who know him, owing to his pleasing personality and strict business integrity. He has a large number of friends in Pratt who are always pleased to see the success which is attending his efforts in a business and social way.

C

Office of
**W. L. McCONNELL
 PLUMBING AND
 HEATING CO.,**
Pratt, Kansas.

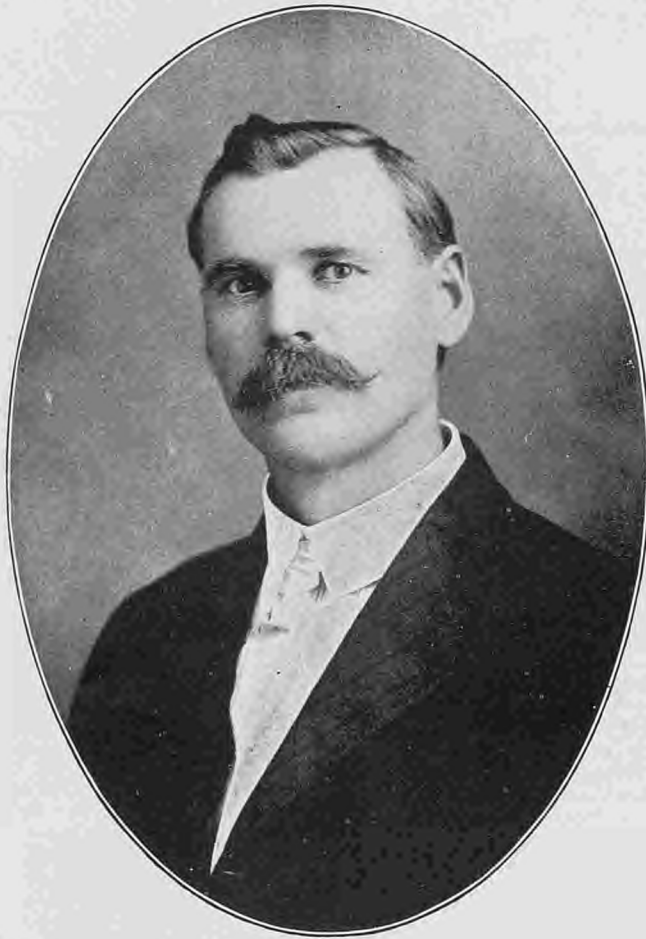
C



McCONNELL PLUMBING AND HEATING CO.

One of the important business concerns in trade circles in Pratt is the McConnell Plumbing and Heating Co., located at Main and Second streets, that is under the management of W. M. McConnell, a man of much experience in this particular line. This firm has established a good reputation for superior workmanship and honest dealings that extends over considerable territory. They handle an excellent line of fixtures and hot water, steam and air heating plants, using the Honeywell system for installation, and make a specialty of mod-

ern farm plumbing. They have done a bulk of the best plumbing in Pratt's leading public buildings and the better-class residences, which is proof sufficient that their business methods are of the highest order. In connection they maintain a well fitted-up tin shop, where skilled men are devoting their energies to that branch of the business. Estimates are cheerfully furnished to those desiring them. Among the other large contracts handled by this firm was the plumbing and heating of the new \$125,000 Pratt County Court House. This shows that nothing is too large for them to handle in a satisfactory manner.



PRATT'S ARTISTIC PHOTOGRAPHER, F. A. WITHERS.

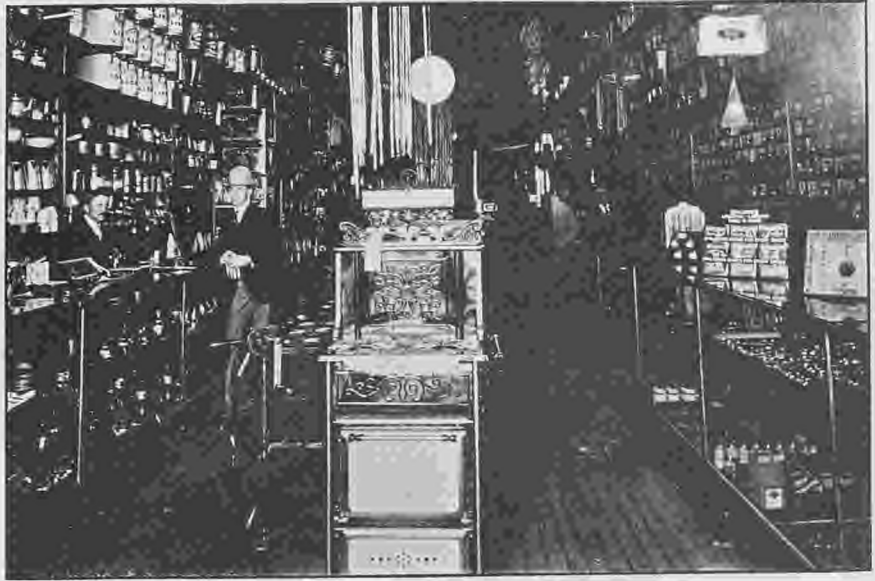
The man who did all the photo work in this book.

There is no town or city in the state of Kansas that compares with Pratt when it comes to art studios. When we say art studio we do not mean the ordinary country photograph shop, but we refer to the art studio conducted by Mr. F. A. Withers at 110 South Main street. This business was established by Mr. Withers about sixteen years ago, but after conducting it for a number of years he sold out, and went to Medicine Lodge in this state, and returned to Pratt about nine years ago. Since that time he has devoted his whole time to improving and adding to the equipment and making of this studio headquarters for anything in the line of modern photography. The studio is equipped with all the modern instruments for making the highest grade of negatives in any size from the stamp picture to the big 16 by 20 pictures. Here one can select mountings in a wide variety of price, but the same standard of quality is maintained in all the work done

at this studio. All the latest novelties, such as photos on pillow covers, color portraiture, calendars with any subject in photographs, enlarging of photos of any kind, the constructing of groups from individual pictures, etc., are all done at this studio in a most artistic manner. There is no other place in Kansas where one can get all of these special features at one establishment. Mr. Withers also carries an enormous stock of mouldings, all carefully selected and consisting of designs suitable for any kind of picture framing. At this studio none but the most skilled artists are employed and the guiding motto is quality first. The prices are fixed so that one receives a dollar in value for every dollar expended. Mr. Withers makes a specialty of answering calls to make pictures on special occasions in any part of the city or country. When you visit Pratt if you do not call at this studio you will miss one of the town's most interesting and up-to-date establishments.

THE HOPPER
HARDWARE CO.,

Pratt, Kansas.



In giving a pen picture of Pratt's staunchest commercial establishments, the list would be incomplete without due mention being made of the Hopper Hardware Co., one of the oldest business houses of this county, and in fact, the first in their particular line, having established their first store at Iuka, Pratt county in the early eighties, and later, when Pratt was started, moving their stock and business to Pratt, where they have conducted their present busy establishment for over thirty years. At this company's store one can find the famous malleable ranges, Quick Meal Gasoline stoves, Sharpless Cream Separators, and other leading sundries for the home. An up-to-date harness shop is operated, where the finest hand-made harness is turned out and where displays can be seen of the finest lines of ready made harness and saddles as well as a full line of horse accessories. Richard Woodruff, who has charge of this department, is a good workman and a clever salesman. This store has grown from a modest little establishment until it occupies a leading position in the hardware line in Western

Kansas. Mr. C. A. Hopper, who is known to his friends as "Bud," is president of the company and has been in the business since it was first established. S. D. Brooks, vice president, who has charge of the sales department, is a good type of the clean cut business man of today. R. R. Kridler, secretary and treasurer, has been connected with this business for over twenty years, and he knows the business from start to finish. Harry Myrick, who has not been connected with the firm so long as the others, is a progressive young man who has charge of the stock and window dressing. On the floors of this store can be seen displayed the same lines of goods that are carried in the big stores of the larger cities and in every department a metropolitan appearance is observable to visitors. The success of this firm is due to straightforward business methods and careful and modern business management. All of the members of the firm are well known in this part of the state and have had much to do with the up-building and growth of Pratt and Pratt county.

BARNES & HARDESTY.

The members of this enterprising firm are B. A. Barnes and J. E. Hardesty. Mr. Barnes has been in Pratt county for over twenty-six years, thirteen of which have been spent in the meat and stock raising business; also in the buying and selling of stock. He has always been optimistic and is by nature a booster. He always looks on the bright side of everything, and this buoyancy of spirit and his straightforward way of doing business have made him a large circle of friends and its effect on his business is shown by the success which he has attained. His partner, Mr. J. E. Hardesty, has been in Pratt county for twenty years, and has also been engaged in stock raising, buying and selling, farming and raising fancy hogs. Virtually three quarters of the thoroughbred hogs in Pratt county came originally from the Hardesty herd. He has over two hundred thoroughbred Poland China hogs at his ranch now, and it is a sight well worth seeing for a visitor to the ranch to watch this large herd of thoroughbred stock feeding. Mr. Hardesty has been the owner of a great many thoroughbred hogs of widespread reputation and among them may be mentioned two

whose names are familiar to hog raisers all over the country. I refer to U. S. PERFECTION and PERFECTION B. The meat market now conducted by these two gentlemen offers many inducements to the careful and thrifty shopper. First and foremost among these inducements is the fact that every pound of fresh meat that is sold over the counter comes from home raised animals that are killed in their own slaughter pens. This insures the shopper clean and wholesome home grown beef and pork, veal and mutton. It means that the animals have not been herded into stuffy, foul-smelling stock cars, and hauled hundreds and hundreds of miles on their way to market and on arrival penned up in crowded stock pens without room enough to even turn around. These conditions do not tend to improve the quality of the meat for human consumption. The meat that is handled under such conditions as govern the business of Barnes & Hardesty's establishment must of necessity be better fitted for the use of human beings than that which is brought to market under the conditions described above. Therefore no one will make a mistake by patronizing the City Meat Market.



PHOENIX THEATRE.

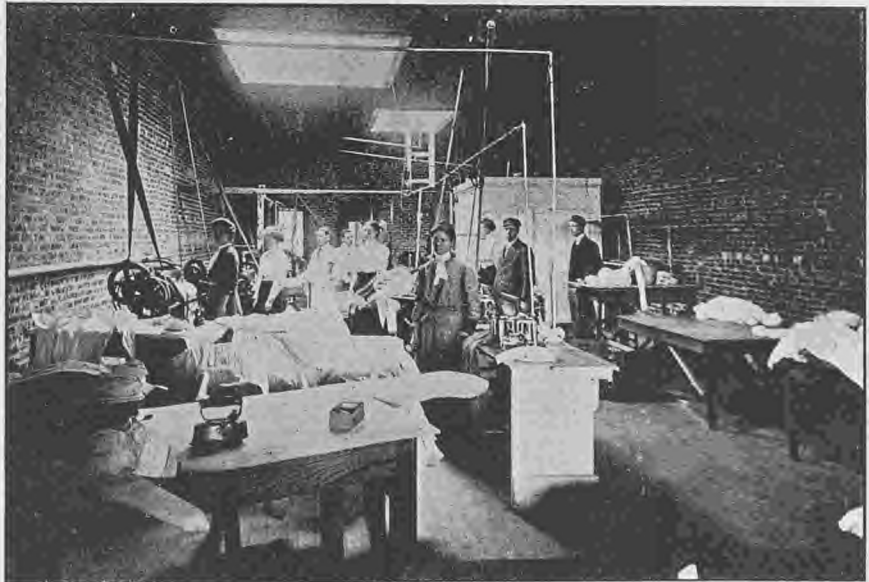
C. I. Rice, Proprietor,
Pratt, Kansas.

Mr. C. I. Rice, the proprietor of the New Phoenix Theatre, was the pioneer moving picture man of Pratt. With his partner, he started the old Phoenix Theatre in the Williamson Block, and afterward moved to the building now occupied by the Elite Theatre. When the partnership was dissolved a few months ago, he purchased the building next door, and remodeled it, and fitted it up as an up-to-date theatre, renaming it "The Phoenix." Since this theatre opened, it has shown some of the best vaudeville and other attractions that have ever come to Pratt; and in conjunction with these shows, this theatre has always shown at least two or more long rolls of the best films it was possible to obtain. As a consequence, this house has been well patronized by the people of Pratt. Mr. Rice intends to continue this liberal policy in the management of the Phoenix and therefore, there is no doubt but what the liberal patronage which has been extended to this house since it was first opened, will continue in the future.

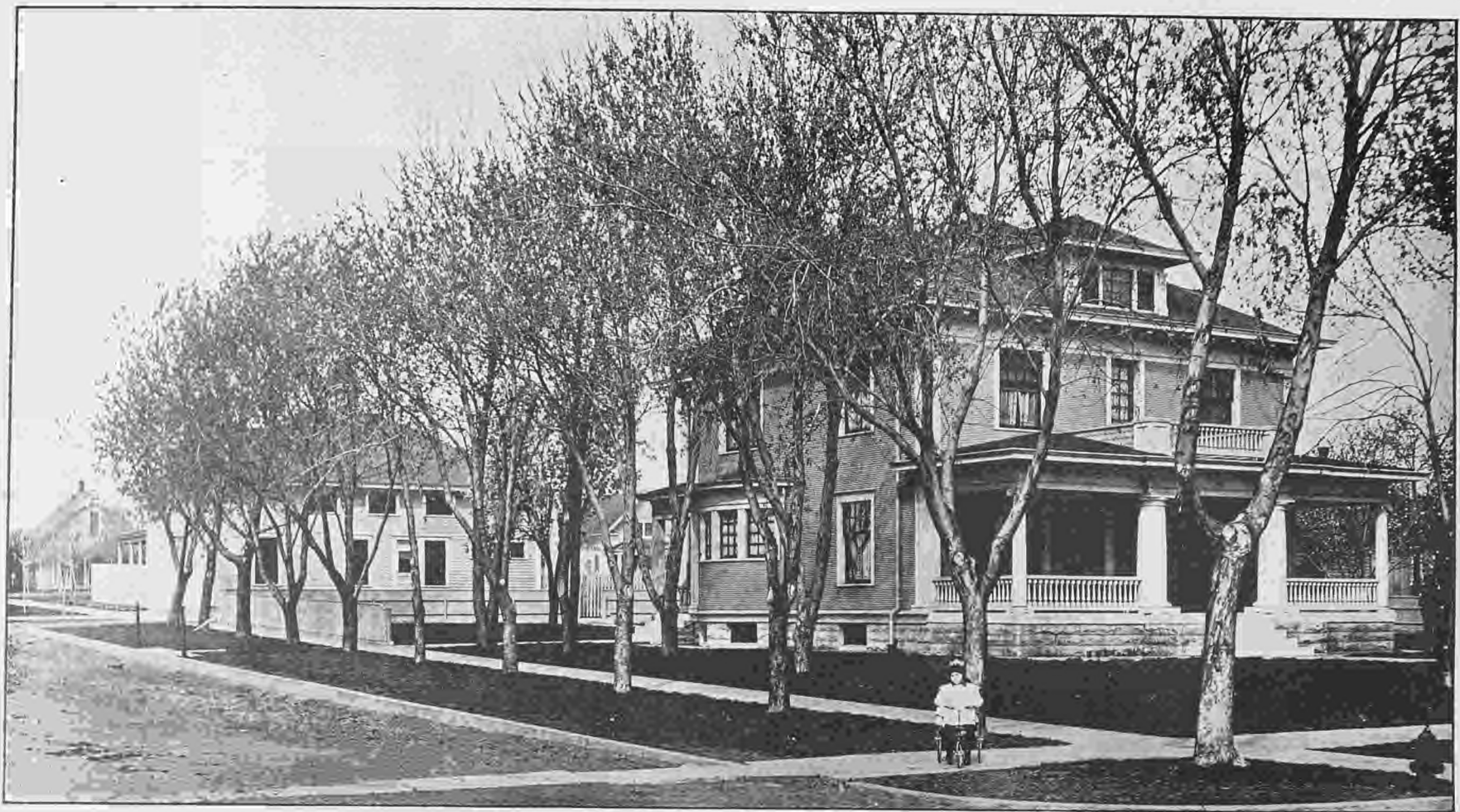
**NEW METHOD
LAUNDRY,
Pratt, Kansas.**

**ROWLEY & CLIN-
TON.**

That "cleanliness is next to Godliness" is an old saw but a true one. That being the case it is a good idea to have your clothes cleaned at a place where they will be thoroughly cleaned without wearing them out in the operation. Such a place is in the New Method Laundry located at 504 South Main street, and owned by F. A. Rowley and Morris Clinton. This laundry has been established in Pratt for a number of years but was purchased by the present owners about the first of the present year. Both members of this firm have had years of experience in the laundry business and this, added to a thoroughly modern equipment, makes it possible for them to turn out the very best of work at prices that are usually paid for inferior service. Mr. Rowley came to Pratt about January 1, from Emporia where he was engaged in the same line of work. He is a



native of Kansas, having been born in Wichita from which place he went to Emporia. He was employed in the laundries of that city before he went into business for himself and knows the business thoroughly. Mr. Clinton has also had years of experience and has been identified with this line of business since coming to Pratt about two years ago. He is a native of Missouri but has lived in Kansas for a number of years. Both members of this firm are boosters for Pratt and their laundry is run on the motto—"return everything but the dirt."



Residence of Hon. J. S. Barnes, Pratt, Kansas.



HON. J. S. BARNES,
Pratt, Kansas.

Hon. J. S. Barnes was born near Summerfield, Noble County, Ohio, in 1859. He worked on a farm until he was eighteen years of age, when his naturally ambitious nature asserted itself, and he began teaching school, and by this means he worked his way through Muskingum College, taking the engineering course and graduating from that institution in 1883. The same year he was elected principal of the Summerfield High School, which position he held until the spring of 1885, when he resigned and came to Kansas and located in Pratt. His ability seemed to be quickly recognized, as he was elected surveyor of Pratt County the same year, but he soon resigned that office and engaged in the real estate and loan business in Pratt, and has continued successfully in that business to the present time. He returned to Ohio in December 1886, and married the girl he had left behind him, and moved into the three roomed house which he had already built on the site of his present residence. In the fall of 1905 he was elected a member of the State Legislature, in which body he made a splendid record, and one which has yet to be surpassed in results accomplished and hard work performed. Mr. Barnes was the author of a number of measures which were enacted into law, and of which Pratt and Pratt County are deriving substantial bene-

fits today. The most important of these was the now famous "Barnes High School Law." Second only to this was the Railroad Switch Law, a very effective measure which required railroads to extend side track privileges to farmers' elevators, which up to that time they had refused to do. At this same session of the Legislature the famous "Game Law" was passed, which provided the funds for establishing the State Fish Hatchery in Pratt County. Mr. Barnes has never sought office, but he has always maintained that a good citizen should, when possible, accept public places when urged to do so by his fellow citizens. As a result, he has held all sorts of local offices, from Director of the Cemetery Association, to Representative, and including City Councilman, and member of the school board for a great many years. These are offices which have no salaries attached. The years of public service performed by Mr. Barnes solely for the public good, and without one cent remuneration, stamp him indelibly as a high type of citizen, and one of whom any community might well be proud. If Mr. Barnes has a hobby, it is education. His keenest interest is shown along educational lines, and he has accomplished much toward giving Pratt the magnificent school system which she possesses today.



Main Street, Pratt, Showing L. C. Miller Block on Right.

L. C. MILLER.

Mr. L. C. Miller is another old timer in Pratt County, having come to Pratt many years ago. He early began to invest in Pratt property, foreseeing that the future would show a large increase in property valuations. His judgment was correct, and as a consequence he not only owns considerable property in Pratt, but he has prospered so well, that from time to time he has made other investments which are bringing in good re-

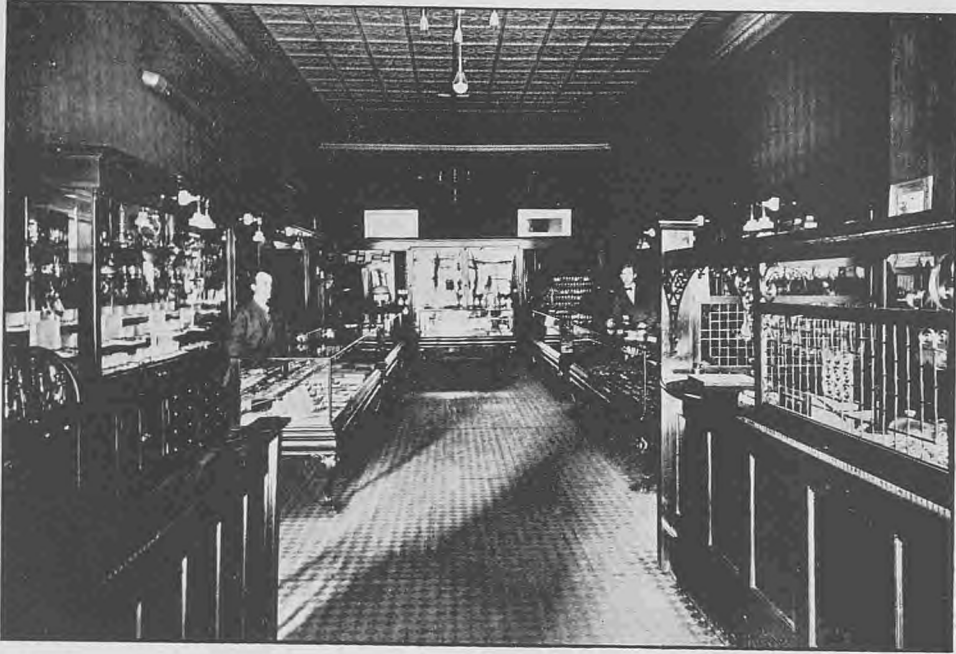
turns. Mr. Miller owns farm lands as well as town property, and has investments scattered all over the country. A short time ago he took a trip to Liberal, Kansas, where he owns a number of business lots, and the result of the trip was a contract let to Harry Duckworth for a fine, large brick business block, which is now completed. Of late Mr. Miller has spent much time away from Pratt, in search of health.



D. H. STEWART & CO.

In no line of effort has there been such advancement made in the past few years, as has been made in the cement contracting business. In this city the firm of D. H. Stewart and Co., keep up to the minute in this line of work. At their plant on East Third street one can see all that is new in the cement line. Prominent among these features, is the steam curing room where cement blocks are kept moist for three weeks or more until they are entirely cured and ready for use. This feature was recently installed at considerable expense. Another modern idea exemplified at this plant, is the dry air spaced building blocks which do away with the possibility of moisture getting inside the building through the blocks. The wall is made in separate sections, a double wall in fact, separated by about two or three inches of air filled space. This style of rock does away with one of the objectionable features of

the older style of block. This firm also does general contracting such as pavements, walks, curbing, etc., and they do their work in a way that gives general satisfaction. Mr. Stewart has been in business in this city a number of years but the partnership was formed about a year ago. Mr. Stewart is a native of Iowa and has lived in western Kansas twenty-nine years. Mr. J. L. Sewell is a native of Missouri, and has been in Pratt county about twelve years. These gentlemen will take any kind of a cement contract and that they know their business, is evidenced by the fact that some of the largest jobs in the city have been done by them. They keep up to date in their line and give customers the benefit of their long experience in this work. Call at the plant at any time and they will be glad to show you the new features as well as the old ones.



O. J. Weseman's Jewelry Store, Pratt, Kansas.

O. J. WESEMAN.

Six years ago next September O. J. Weseman succeeded to the business of T. W. Roe who had been in the jewelry business in Pratt for a period of 20 years. The first two years, Mr. Weseman was located in the store room, two doors north, but has since moved to the store formerly occupied by W. H. Thompson as a real estate office. The store proper was entirely overhauled and made modern in every respect. The present fixtures which were then installed at a considerable expense, are a credit to a town many times larger than Pratt but Mr. Weseman believed Pratt was entitled to the best and everybody is certainly proud of Pratt's jewelry store. Traveling men have pronounced it one of the prettiest stores in this section of the west. Mr. Weseman has been in the jewelry business eighteen years and is an experienced watchmaker, engraver and optician, and is also official watch-inspector for the C. R. I. & P. Railroad. He formerly lived in Wisconsin and Michigan.

PRATT MARBLE
AND GRANITE
WORKS.

Pratt, Kansas.

Manager
P. M. GATES,
at his desk.



The Pratt Marble and Granite Works, located at 118 Main street, was established in 1907 and the firm that owns the works is made up of the leading men of Pratt and Pratt county. The following are the stockholders: P. M. Gates, E. B. Curran, Gibbens Brothers, J. S. Barnes, C. R. Mawdsley, W. H. Thompson, C. E. Repp, James A. Porter, S. P. Gebhart, E. L. Shaw and Thad C. Carver. At the works one can find an excellent line of Wisconsin and Vermont marble and granite for monuments, headstones, corner-stones, etc. Orders are executed here for anything in the marble and granite line, and as evidence of the skill of the workmen employed at this shop some of the most beautiful and expensive monuments to be found in the cemeteries of southwestern Kansas are products of this establishment. The works are under the management of P. M. Gates who has lived in Pratt county for

sixteen years and had the benefit of thirteen years experience in the same line of work before coming to this city. This firm sells better goods for less money than one has to pay the concerns that do their work in the larger cities, because the works are run under the policy of the best for the least money. None but experts are employed at these works which insure the best of workmanship on all work done. Call and see the excellent line of samples that are carried in stock before you place your order for anything in the marble or granite line.



Alex Nickerson's
Blacksmith and
Wheelwright Shop,
Pratt, Kansas.

Mr. Nickerson is one of the old pioneers of Pratt County, having settled at Saratoga in the days when it looked as though that would become the county seat of Pratt County. Saratoga was quite a town in those days, and Mr. Nickerson made money at his business of carriage painting and repairing, blacksmithing, etc. He bought property with his surplus earnings, and was on the high road to prosperity, when the county seat fight was settled, and Pratt became the County

Seat. This wiped Saratoga off the map, and the houses were moved down to Pratt. Mr. Nickerson was about wiped out too. But he made another start in Pratt, and by fair dealing and attention to his business, he has accumulated a nice competency. He is getting old now and needs a rest, and therefore would like to sell his business. He has the only business of the kind in Pratt, and this would be a fine chance for anyone to get a good business at a reasonable figure.



THE PRATT
TELEPHONE COM-
PANY.

Group of Pratt Tele-
phone Exchange
Employees, Showing
Manager Chas. A.
Sloan in the center.



As the telephone becomes more universal in its use the demands upon the telephone company for uniform, rapid and reliable service becomes more urgent. Because of the comparative newness of the telephone as a staple method of traffic, and the peculiar intricacies of the business which necessarily places it in a distinct class of its own, few people realize the stupendous problem confronting the telephone company which operates in a rapidly growing city or town. As a servant of the public its affairs must be adjusted so that each patron may be given the service best adapted to his needs, at a rate which will pay a fair dividend on the investment, and yet under such conditions as will eliminate any suggestion of discrimination as compared with other present or possible connections. In laying plans for the present they must be adjusted to serve as a foundation for future requirements. Those who plan this development must foresee not the probable growth of the town in the abstract, but must anticipate the possible development

in each of the various districts. As a result this necessitates the carrying at all times of quite a considerable percent of reserve equipment. Realizing this condition the Pratt exchange is taking steps with a view to providing for future requirements; and will install in the near future a common battery system with the most modern and practically all-cable system which will bring the exchange up to a high standard of efficiency. This company which was organized in 1900 and started business with fifty subscribers, has steadily increased its patronage until today it has seven hundred and fifty pleased patrons. The business from the first, has been under the capable directorship of C. A. Sloan, who has been ever vigilant in the minutest details of the exchange and who, by his untiring efforts, has brought the plant up to a high standard of efficiency. This exchange has connections with the Independent and Bell systems, and thereby assures its patrons the best of telephone service. From time to time added improvements will be made adequate to handle its increasing business.



McKOWN & GRIF-
FIN, GROCERS,
Pratt, Kansas.



The members of this firm are E. G. McKown and J. R. Griffin. They have one of the finest storerooms in Pratt, and carry a large and varied stock of groceries. Mr. McKown was formerly in the grocery business at Ashland, Kansas, and also hauled freight from Dodge City when things were pretty lively around there. About seven

years ago Mr. McKown came to Pratt, and started in the grocery business, and has built up a nice trade. Recently his son-in-law, Mr. J. R. Griffin came to Pratt and entered into partnership with Mr. McKown. They are attending strictly to business, and say that they have no cause to complain, as their business is growing rapidly.



Built by H. N. Duckworth.

S. P. Gebhart's Residence, Pratt, Kansas.



S. P. GEBHART, Pratt, Kansas.

Mr. Gebhart was born in Graysville, Ohio, and came to Pratt County in 1887. He taught school in Ohio for fifteen years, in West Virginia for one year, and in Kansas for two years. He served as County Superintendent of Schools in Pratt County for eight years, and served on the City Council, and as Mayor of Pratt, has been elected a member of the Board of Education three times, and is a member of that body at the present time. Mr. Gebhart was also a charter member of the Pratt County Fair Association, and served as its President during the first three years of its existence, and is still a member of the Executive Board. Fourteen years ago, he purchased the Pratt Union, and has built up the circulation, until it is a fine paying property. This newspaper is located in a substantial stone building, which is owned by Mr. Gebhart, who also owns considerable other real estate in Pratt and Pratt County, including many broad acres of rich farm lands. That Mr. Gebhart has prospered in Kansas is beyond dispute, and his experience is an object lesson in regard to what can be accomplished in Pratt County by a man who is willing to work hard for success. A picture of Mr. Gebhart's beautiful modern residence is shown herewith, and he may well be proud of such a dwelling. He is an enterprising man, and a public spirited, broad minded citizen, of whom any community could say with truth, "Long may he dwell among us."

**J. W. FARMER'S
GARAGE,
at Pratt, Kansas.**



Mr. J. W. Farmer came to Pratt County when its chief ornament was Buffalo grass, and the occupation of the people County Seat fights; when herds of cattle roamed over the spot where the thriving city of Pratt now stands. He freighted from Hutchinson in the early eighties, and has passed through the many hardships and vicissitudes which fell to the lot of the pioneer in Kansas. He has followed the sod plow over many acres of Pratt County prairie, besides doing more than his share of cow punching. At one time he held down the position of dining room girl at the old Main Street Hotel at \$2.00 per week, near the spot where his new Automobile Garage now stands. He afterward held the position of section foreman on the Santa Fe road for several years. Later he went into the General Merchandise business in Coats, Kansas, and from that business changed to Implements and Vehicles, and finally branched out into the Automobile business, at which he has been very successful. Mr. Farmer brought in two of the first six Automobiles which were brought into Pratt County. He is a natural born mechanic, having built a small grass mower that worked well, when he was only ten years of age.

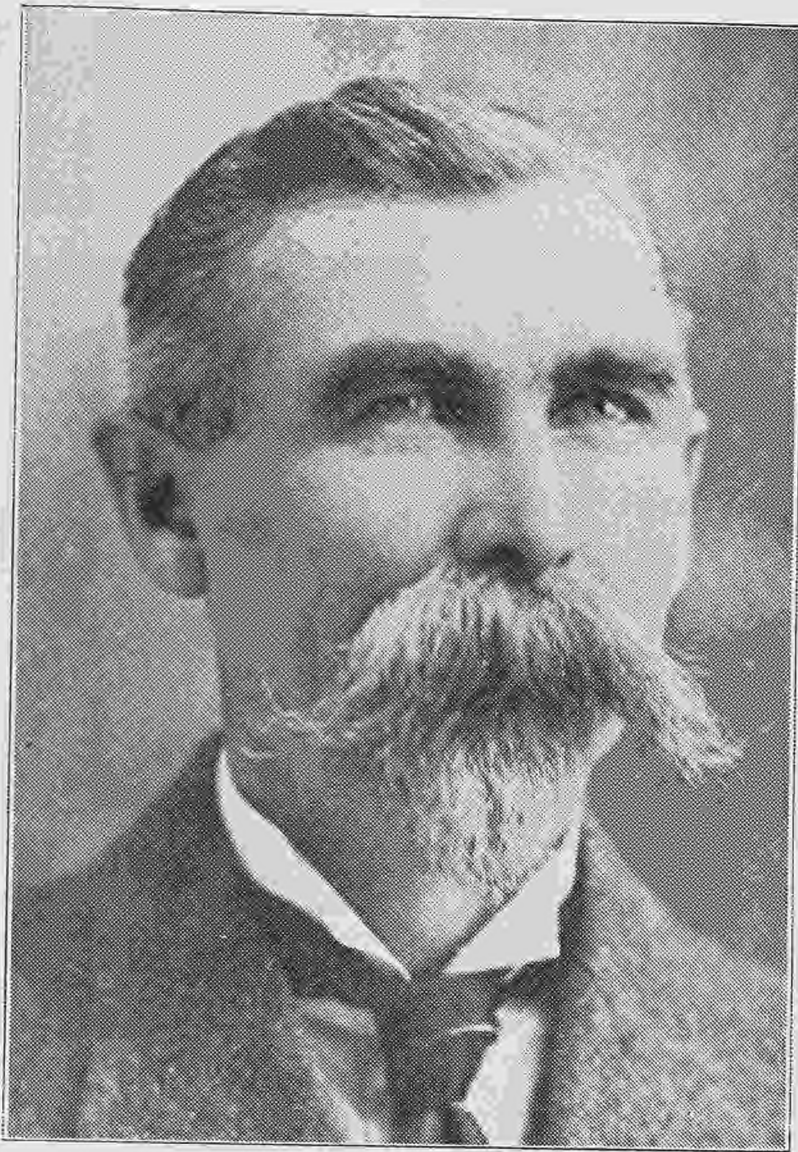
His fancy for machinery has never left him, and he finds great pleasure in the Auto business, owing to his love of machinery. Mr. Farmer holds a record that probably has few equals. He has driven Autos approximately 100,000 miles in the last four years, and has never had an accident, or a break down, has never been pulled in, or has never caused any one to get hurt. During this four years livery driving of Autos he has never missed a train, or allowed a passenger to walk. He has located permanently in Pratt, has built a fine new garage on Main street, and a commodious residence at the corner of Jackson and Garfield streets. He is handling Automobiles, accessories, does repairing, employing only the best skilled mechanics, and will also maintain a first class Auto livery service. Mr. Farmer is a valuable acquisition to Pratt, and we hope to see many more of his kind settle here.



**T. A. CAMPBELL'S
TRANSFER BARN,
Pratt, Kansas.**

Mr. T. A. Campbell was born in Virginia, and came to Pratt in 1885. Shortly after his arrival he went into the transfer and livery business, and has continued in that business ever since with great success. He has enlarged his business from time to time, and at the present has the only Transfer line in Pratt. He has four busses and a baggage wagon running night and day, and the

service maintained by the Campbell Transfer Line is so satisfactory that words of praise are often heard from commercial men regarding it. Besides the transfer line, Mr. Campbell does a large business in the buying and selling of mules. Any one having good serviceable mules for sale need never go further than T. A. Campbell's barn to make a deal. Mr. Campbell is a good type of citizen and is highly regarded in Pratt.



Hon. D. W. Blaine.

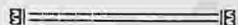
D. W. BLAINE AND SON.

The firm of D. W. Blaine and Son is composed of D. W. and James G. Blaine and they are among the pioneer business men of Pratt. Their place of business is located on Main street, they are the sole distributors of the Moline automobile for the 7th and 8th Congressional districts of Kansas, the northern tier of counties of Oklahoma and the east half of New Mexico. Until recently they were in the retail automobile business and sold the Moline and Reo cars but are now engaged exclusively in the jobbing business. That this firm is the pioneer in the auto business is evidenced by the fact that the first car in this part of Kansas, Milwaukee Steamer, was purchased by the elder Mr. Blaine ten years ago. This car however, was pushed aside by the rapid development of the motor cars and after careful consideration the Moline car was selected as being the best all-

around car for the territory, in which they control its sale. The elder Mr. Blaine is a native of Ohio, but has been in this county for the past twenty-six years, and before engaging in the auto business had a large and well stocked implement house in Pratt. James G., the junior member of the firm, was born in Illinois and has been a resident of Pratt for twenty-four years. This firm is progressive and enterprising and has kept up to date in the auto business and the coming summer will see the Moline car wherever cars congregate, as it has the speed, reliability, and all-around utility that a car must have to be a success in this part of the country. Local dealers in the territory mentioned above would do well to confer with this firm regarding agencies for the Moline automobile. They also sell the Reo automobile in Pratt, Kiowa and Barber counties.



H. S. MEAR'S
Real Estate and
Insurance Office,
Pratt, Kansas.



One of the old timers of Pratt and Pratt county and a man who has been closely identified with the growth of this session of the state during the past score of years is S. H. Mears, who con-

ducts one of the most prominent and up-to-date Real Estate, Loan and Insurance agencies in Pratt county, having in connection, a large fire proof insurance depository, for the use of his many patrons, for the protection of insurance policies and other valuable papers. Mr. Mears represents some of the best insurance companies doing business in Kansas, and policies written by the H. S. Mears Insurance Agency are carefully and accurately written. Mr. Mears is a native of Iowa, but came to Kansas 25 years ago, and to Pratt county over 23 years ago, and he has been actively engaged in Pratt and Pratt county since that



time. In the real estate line, he has one of the largest and most varied lists of farm lands, and other property to be found in this part of the state, including bargains outside of Pratt county, and can give valuable advice on land and land values in this part of Kansas. Mr. Mears does business for non-residents, such as looking after rentals, payment of taxes, conducting a free information bureau for any one inquiring into the merits of any land or other real estate proposition that might be offered to prospective buyers. The H. S. Mears office is most favorably located, being on the ground floor, in the East room of The Peoples Bank Building, Pratt, Kansas, Phone No. 30.



CURTIS GARAGE,
Pratt, Kansas.



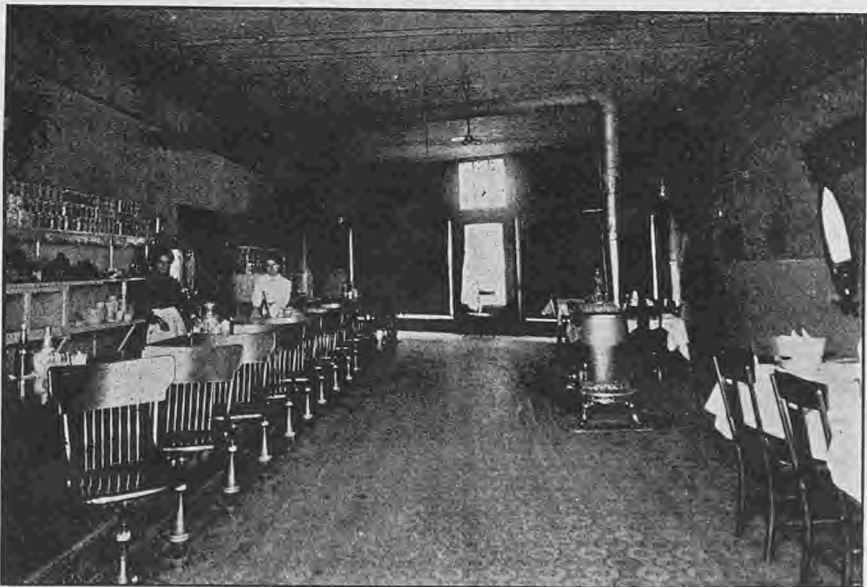
The Curtis Auto Co. is another firm which has proven a credit to Pratt. W. D. Curtis, the manager, is a man of the strictest integrity, and in the comparatively short time that he has been located in Pratt, he has proven to the satisfaction of all who have done business with him that his word is as good as his bond. And he has also demonstrated the fact that he knows the Auto business from start to finish. The firm recently

moved to the Garage located on North Main street, near First street, where their machinery equipment has been enlarged. All the work turned out by them is guaranteed, and only the best class of skilled labor is employed. They do a large auto livery business, and only good, modern cars are used in this branch of their business. The success which they have attained is a good testimonial as to their method of conducting their business.



C. E. REPP BUILDING,
Pratt, Kansas.

Mr. Repp is another old resident of Pratt, having been established in that city for a number of years. He has a first class furniture store, and undertaking establishment. Everything about his place is modern and high class. The lines of furniture and house furnishing goods are always kept moving, owing to the large trade done, and therefore, no old and shopworn goods are ever seen in the store. Mr. Repp is a high type of business man, and a good citizen, and is highly regarded in Pratt, where he has a large circle of friends. When doing business with him, the people of Pratt County have come to know that they will always receive fair treatment and high class goods.



W. W. TAYLOR'S
"OUR WAY"
RESTAURANT,
Pratt, Kansas.

Up in the north end of Pratt, on Main street, close to the Rock Island depot, is a unique little restaurant, that is just a little different from the ordinary, and it is called "Our Way Restaurant." The proprietor is Mr. W. W. Taylor, and he has ideas of his own as to the way a restaurant should be conducted. This is shown by the name given to his place. Regular meals are served here, special orders, or carry out lunches, and a large bus-

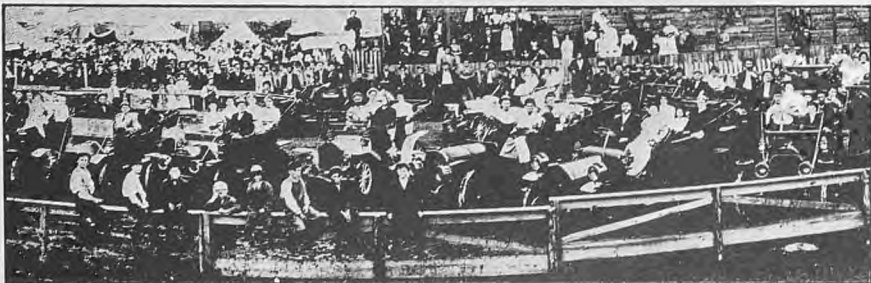
iness is done with passengers on the Rock Island trains, many of which stop at Pratt for meals. Everything about the "Our Way Restaurant" is spotlessly clean, and the cooking is the regular "Home Kind." By the use of only the best quality of provisions, and scrupulous care as to cleanliness, this neat little place has grown in popularity, until now it has about all the business it can accommodate.



Scene at The Pratt County Fair, 1910, Pratt, Kansas.

THE PRATT COUNTY FAIR ASSOCIATION.

This Association was organized in 1907, with a paid up Capital of \$10,000. They own a most beautiful Fair Ground adjoining the city limits, in the picturesque Ninnescah Valley. Four successful fairs have been held since the association was first formed, and preparations are well under way for the fifth fair. This Association is a member of the Kansas-Oklahoma Circuit, and their half mile track is recognized by horsemen, as one of the best in the State of Kansas. Plans have been made for a city park, and trees have been set out, for the purpose of creating a beautiful park for the city of Pratt, and also to enhance



A Crowd at The Pratt County Fair, 1910, Pratt, Kansas.



Pratt County Fair in 1910.

the beauty of the grounds where the County Fair will be held. The management of the Fair is vested in the leading business men and farmers of the County, who believe in the general good that the community will derive from a well managed fair. There are numerous commodious buildings now on the grounds, and more are being erected as fast as conditions will warrant, in addition to which many other improvements are being made. Mr. Walter Pedigo is the Secretary of the Association, and all communications regarding entries and exhibits, should be addressed to him at Pratt, Kansas.



Fast Time on The Pratt County Fair Association Track, Pratt, Kansas.



Residence of
MRS. PERRY C. REED,
Pratt, Kansas.

Above may be seen the residence of Mrs. Perry C. Reed, who is an old resident of Pratt, and one who is well and favorably known. Mrs. Reed is the widow of the late Perry C. Reed, who was prominently identified with the earlier history of the town, and did much to help in its development. Mrs. Reed is a thorough business woman, having many business interests, among which may be mentioned her interest in the Reed Dry Goods Co. Store. But apart from her business ability, Mrs. Reed is an accomplished musician, especially in vocal music, being gifted with a magnificent soprano voice of wonderful range and power.

FRED FINGER JR.

We reproduce the above picture of Fred L. Finger Jr., who is a descendent of one of the early Pratt county Pioneers. This sturdy little man was born in Kansas, and we are proud to exhibit him as a fair sample of the kind of stock which peopled Kansas in the early days, when hunting buffaloes, and guarding the county seat location were the chief recreations of the people. He is a son of Fred L. Finger and Evangeline Finger, nee Lowry both of whom have spent most of their life in Kansas. Fred L. Finger Sr. came to Pratt county with his parents in the early eighties shortly after Pratt county was organized, and has been prominent in business circles for many years. He was a member of the firm of W. P. Finger & Sons for a number of years. He is now engaged in Real Estate promotion, and kindred enterprises.





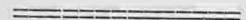
GEO. W. STEWART.

Mr. Stewart was born in Putnam County, Indiana, Jan. 27th, 1847. His father was a farmer and also dealt extensively in stock. When five years of age the family moved to Centerville, Iowa. Mr. Stewart married Miss Sarah E. Shaw of Indiana, and the issue of the marriage were Ora B., Lola E., Ada C., and Maud E. He moved to Pratt County, Kansas, in 1878, and engaged in farming and stock raising as his father did in Indiana and Iowa. In November 1879, he was elected Register of Deeds for Pratt County. He also served for seven years in Common Council. At present Mr. Stewart is engaged in the Real Estate, Insurance and Farm Loan business, and has established a large business in this line. He was formerly a member of the firm of Stephenson and Stewart, which built and occupied one of the finest brick business blocks in Pratt. This firm sold the first yard of dry goods ever sold in Pratt.



**ROCK ISLAND
LUMBER AND
COAL CO.**

**J. A. FAIRCHILD,
Manager.**



J. A. Fairchild, manager of the Rock Island Lumber and Coal Co., at Pratt, Kansas, has been with the firm seven years and at this yard for one year. He was formerly at Independence, Kansas. This yard is an exceptionally fine one and the

manner in which it is kept cannot fail to impress the observer. The office and yard which is situated in the business section is a model of neatness. The stock is large and well assorted. The splendid trade enjoyed by the company is ample tribute to the ability of the manager.

WILL H. TRACY.

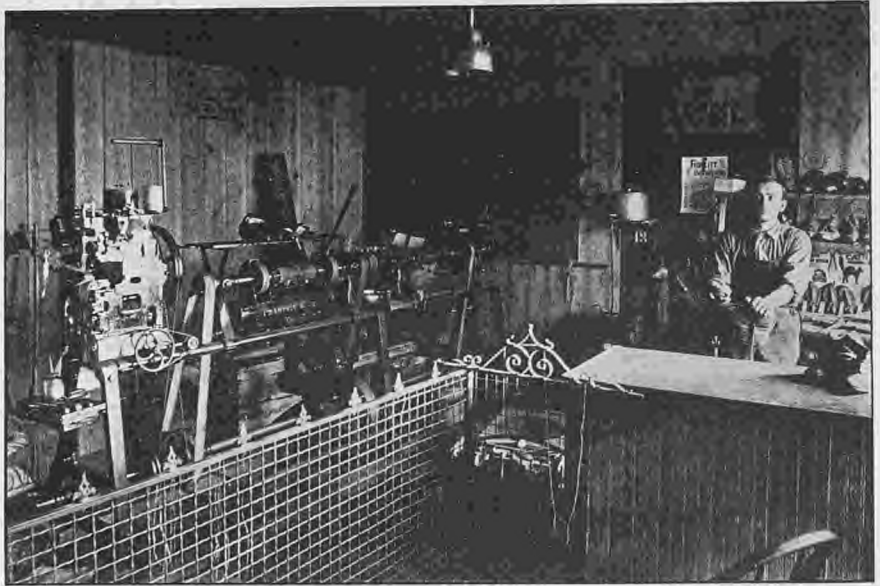


Will H. Tracy, Auctioneer.
Pratt, Kansas.

About nine years ago Will H. Tracy came to Pratt, and ever since he has followed the Auctioneer business in a way that has made his name a household word all over western Kansas. He is an auctioneer of great personal magnetism, and when he starts to sell real estate or live stock the prices begin to soar. He has a wonderfully strong and penetrating voice, which reaches to the outermost edges of the largest crowds, and the crowds are usually mighty large when Will Tracy cries a sale. This natural gift of a strong voice, coupled with his unquestioned ability as an auctioneer, has made him very successful in his business. He has made many friends by his straightforward dealings, and honest efforts to always do his level best both for buyer and seller. For the seller he always works his hardest to secure the best prices for the article he has for sale. And for the buyer he does his best by being honest in his description of the article for sale. Never in all his career has he been known to make a willful misrepresentation. This is one of the things which have made him so popular, and which makes his services always in demand. He has built up a large clientele, and is always busy.



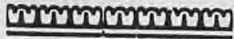
JOHN COLE.



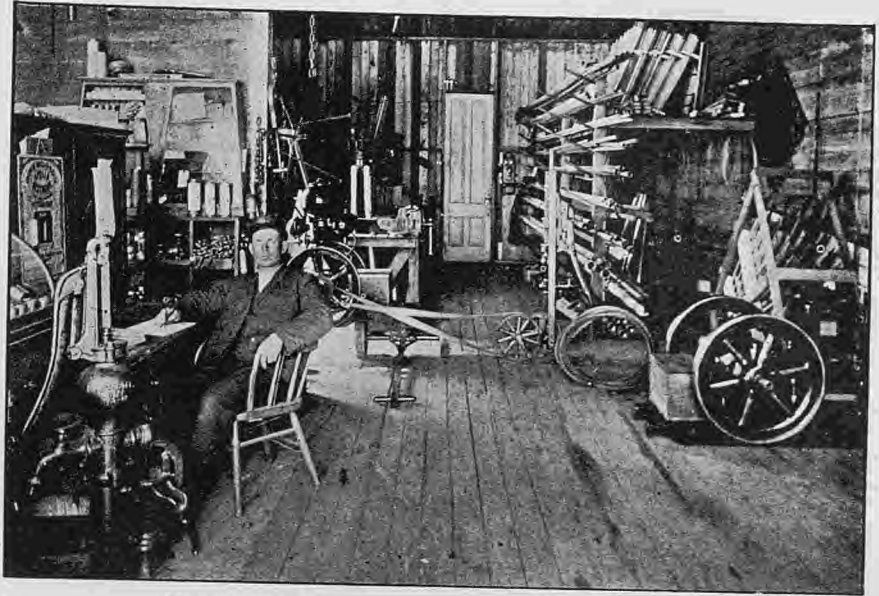
John A. Cole in his Modern Shoe Repairing Emporium, Pratt, Kansas.

Of late years there have been great strides in improvement on all kinds of machinery, but in no line has the improvement been so pronounced and given such excellent results as in the shoe repairing business. The establishment that is owned and run by John Cole at 318 South Main street is equipped with the very latest machinery for turning out the best work in the shortest possible time. The machines are arranged one beside the other along the wall of the room, are operated by electricity and it is possible to start at one end of the series of machines where the shoe is sewed and after putting it under several different stages of treatment it is finally brought to the other end of the machine in such condition

that it resembles a brand new shoe. It takes an expert to run a machine of this kind but Mr. Cole's long experience in this line of work enables him to turn out this sort of work for the same money that you pay for the old fashioned kind. Mr. Cole has been in business in this city for the past two years, and by honest business methods has built up a fine trade. He is a native of this county having been born here. He served a full four years in the Navy and was honorably discharged just previous to locating in this city in his present line of business. He was on the Bennington when she blew up, and is glad to be alive. His business motto is "Have your soles saved, and go well healed through life."



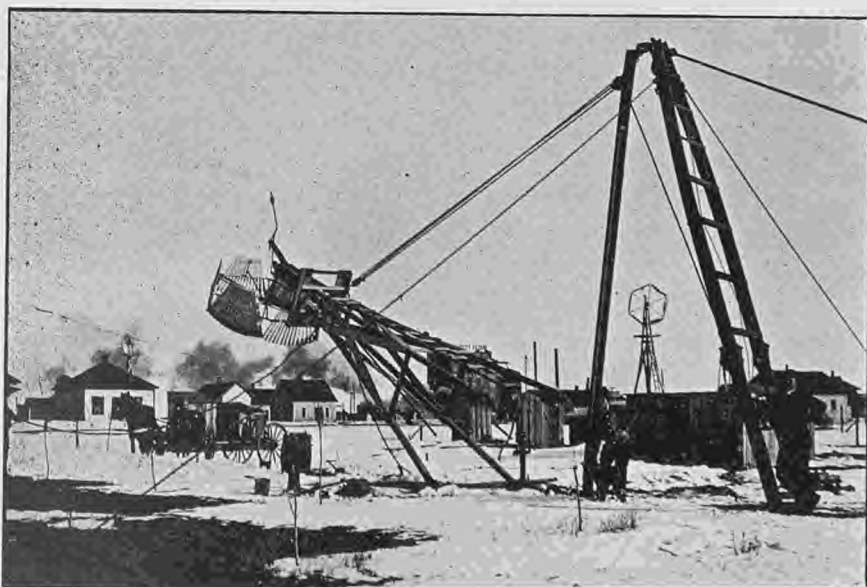
KYLE W. TALBOTT



Kyle W. Talbott, Hydrogen Specialist, at his desk.

Mr. Talbott was born in West Virginia, and came to Pratt when quite young. He has been for a number of years engaged in the well drilling and plumbing business, and is known as "The Hydrogen Specialist." He handles Windmills, Pumps, Fittings, Plumbers' Supplies, Tanks, Hose and Gasoline Engines. He makes a specialty of Tubular Wells, and he does all work in such a thorough manner that when he once does work for a patron, he never loses him as a customer. The upper picture shows Mr. Talbott's office, and the lower one shows him at work erecting a wind-

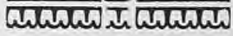
mill, with several inches of snow on the ground, proving that he keeps at work even in winter. This picture also shows four wells, and three windmills which were put in by him, within a short distance of each other. When he put in the first well and windmill, it was so satisfactory that he received orders for the others as soon as they were required. A visit to his place is most interesting, as he always has a full line of well and pumping machinery in stock, besides gasoline engines, which he is pleased to show or demonstrate at any time.



Kyle W. Talbott at work in Pratt, Kansas.



E. B. CURRAN



No real estate deal is complete unless an abstract of title accompanies the deed to the property involved. In Pratt county there is but one set of abstract books and they are owned by Mr. E. B. Curran whose office is located in the Peoples Bank building. The records in these books are complete

from the time of the establishment of the county, and are kept right up to the minute by expert abstracters. Mr. Curran also does a general real estate business in Pratt county lands and usually has some choice farms for sale. In the insurance line he represents some of the leading companies and writes policies covering lightning, fire and tornado risks. The policies written are very liberal



Residence of E. B. Curran, Pratt, Kansas.

and the premiums are made according to the rates demanded for absolute protection. Mr. Curran is a native of Michigan but has lived in Pratt county twenty-four years. Nineteen years of that time he has been in the abstract and real estate business, and is one of the best known men in these lines of business in western Kansas.



Residence of J. H. Christopher, Pratt, Kansas.

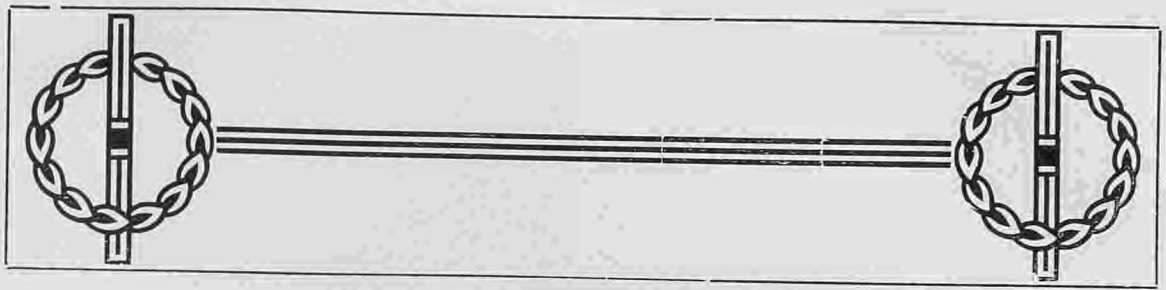


J. H. CHRISTOPHER



Here is another gentleman who, while comparatively new to Pratt, is considered a valuable acquisition to the city. Mr. Christopher came to Pratt about a year ago, and purchased the A. F. Jones residence on North Main street. A few months ago he erected three modern cottages on

North Jackson street, which contain all the modern improvements, and which add materially to the appearance of the block on which they are located. He is a booster by nature, and is a citizen of whom any city might well be proud.



THE PRATT REPUBLICAN.

The Old Home Paper and the Only Republican Paper Published in Pratt County.

The "Pratt County Press" was the first newspaper established in the county of Pratt and made its modest appearance in the spring of 1878. It was moved to the new town of Pratt when that town was started on the 9th day of April, 1884, was later merged with the Saratoga Sun and named the Pratt Republican. In 1894 it was consolidated with the Pratt County Times, later swallowed up the Pratt County Citizen and the Pratt Daily News, and is today the oldest newspaper published in the county and has a stable subscription list that grows as the years go by until it stands as one of the reliable publications of the south and west part of the state. Cochran Bros., with J. K. Cochran as Editor and A. A. Cochran as business manager, are the owners and publishers and strive to keep it in advance of all competitors who enter the field. They have made of it a reliable "home paper" with a circulation that covers the county thoroughly and their pride is to keep it so clean that when you see it in the Republican it can be depended upon as true. The paper has grown from a small four-page, five-column sheet until now the demands of the advertising patrons and the increased population of the city of Pratt and Pratt county make it necessary to print from ten to sixteen pages each week, with six columns to each page.

A splendid up-to-date job printing office has been added to the plant, a Mergenthaler Linotype machine sets the type and all the presses are operated by electrical power. The Republican employs printers who are artists in their profession and their job printing establishment really has no competitors in this part of the country when it comes to fine printing. Quality is their "fad" and the Republican draws the biggest and best jobs from the neighboring counties in the job printing line. The business of the Republican office has grown with such steady and gratifying regularity that the plant is seeking larger quarters and will probably be compelled to erect a fine new modern building in the very near future in order to give room for the increasing demand for new machinery and enlarging business. The Cochran Brothers are among the oldest settlers in the county, J. K. Cochran, the elder of the two, having commenced to learn the printer's trade on the old Pratt County Press in the year 1879, when he was less than fifteen years of age. They believe in Southern Kansas as the best climate, the best opportunities for mankind, either young or middle-aged, and they are proud of the fact that they have "grown up with the country" and the newspaper and printing business has grown even faster than the times and circumstances seemed to warrant. The Republican is one of the institutions that "came to stay" and has done more than any one other enterprise to make Pratt County, in the State of Kansas, one of the best and most progressive portions of creation.





Pratt Canton No. 27 I. O. O. F.

Reading from left to right—TOP ROW: Past Capt. C. S. Parsons, Sergt. E. P. Van Vranken, Chev. Wm. Baker, Sr. Hospital Sergt. R. M. Woodruff, Chev. A. W. Bales. MIDDLE ROW: Sergt. Chas. Cooper, Chev. E. C. Smith, Sergt. J. M. Lucas, Chev. J. E. Farmer. BOTTOM ROW: Capt. A. S. Farmer, Lieut. C. E. Wallace, Jr., Hospital Sergt. C. H. Craver, Chev. S. P. Gebhart, Chev. H. S. Gregory, Major J. J. Roll.

J. H. LUXTON

If it is true that "The clothes oft proclaim the man," then it behooves a man to get the very best in clothes, and in the establishment that is owned and operated by the subject of this sketch, Mr. J. H. Luxton, this city has a tailor shop of which it may well be proud. Mr. Luxton is a master of the tailoring trade, having been engaged in the business for twenty years.

Having learned his trade with a leading Scotch tailor in Exeter, Ontario, he has worked in some of the best shops in Canada and Michigan, previous to entering business for himself in Flint, Michigan. Mr. Luxton has been engaged in the tailoring business in Pratt for the past five years and during that time he has furnished the clothing for many of the best dressed men in Pratt County and western Kansas, and as he has the only strictly up-to-date tailoring establishment on the Rock Island, west of Hutchinson, carrying a full line of woolsens and trimmings from which selection is made, he is well worthy of patronage. A workshop 20x25 is maintained on the second floor of his building, where three or four expert tailors are kept constantly employed. He keeps up with the lat-



Office and Salesroom, J. H. Luxton, Tailor, Pratt, Kansas.

est styles in clothes making, and gives his customers the benefit of his long experience in the selection of materials. All work at this shop must be satisfactory before it is allowed to be taken away. A modernly equipped French Dry Cleaning, Pressing and Repairing Department is also operated, having the only dry cleaning machinery used in the county. Therefore any work left here can be relied upon to be returned in first class condition. At this establishment one can buy the best of clothes for the same money that is usually paid for inferior goods. Mr. Luxton's reputation for fair dealing is behind every suit or overcoat turned out, and when you order your clothes of him you will receive a dollar in value for every dollar invested.

HELSEL'S
SANITARY
DAIRY.

Few institutions or businesses in the city of Pratt have come into public popularity more than the subject of this sketch, Helsel's Sanitary Dairy. The dairy was started by Mr. Helsel in 1906 with but a few milk producing cows; but the demand for his excellent product has grown far beyond his earlier expectations, until his dairy herd now numbers about 35 head of the best stock procurable. His dairy has gained prominence, not alone from the healthful, nutritious and pure quality of milk, but also from the fact of the ideal location of his valuable dairy farm, which is in a most desirable spot a short distance north of the city.

The arrangements at this particular dairy are without doubt the best to be had. Every effort is put forth to keeping the entire place up to the highest standard of sanitation, and this feature makes it ab-



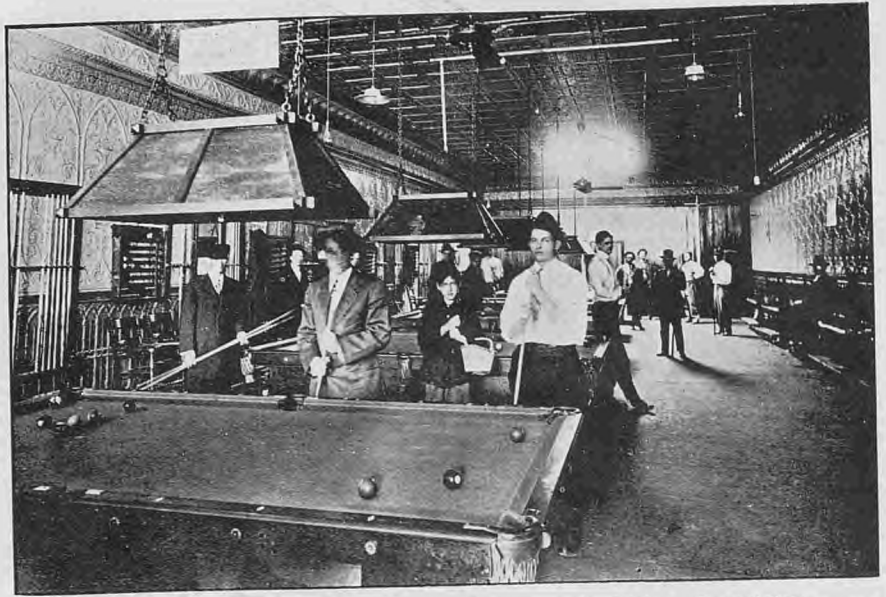
Geo. Helsel's Sanitary Dairy, Pratt, Kansas,
Showing First Silo in Pratt County.

olutely indispensable to the welfare of the community. One feature that greatly adds to the many advantages of this dairy is the large new silo which was constructed last fall at an expense of \$1250.

||====||

J. S. ELTING.

||====||



Palace Billiard and Pool Hall, Pratt, Kansas, J. S. Elting, Proprietor.

Mr. J. S. Elting is not an old settler of Pratt, but he has been here long enough to show what kind of material he has in his make up. He was born in Dodgeville, Iowa, and came to Pratt in

the early part of 1910. He opened a Pool and Billiard Hall, and recently refitted his place and now has one of the finest places of the kind in Kansas, or any other part of the West. There is



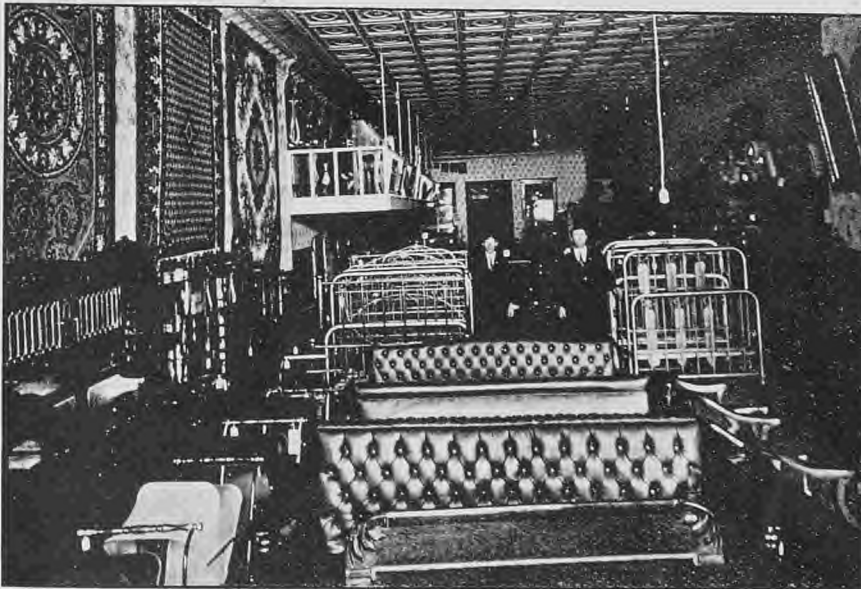
Smoker's Department, J. S. Elting's Palace Billiard and Pool Hall, Pratt, Kansas.



Palace Barber Shop, Pratt, Kansas.

a first class barber shop connected with his establishment, which has been added recently, with the most modern appliances, which will bear comparison with many of the leading shops in our largest cities. In the Cigar Department will

be found the leading brands of imported and domestic cigars and tobaccos, all the leading magazines and papers, and his place is first class in every respect.



Doan & Co.'s Furniture Store, Pratt, Kansas.

This firm which is universally known throughout southwestern Kansas has been in business in this city but ten months. However, the active member of the firm, Mr. G. W. Doan, is one of the really old timers of Pratt. He was born in Kentucky but came to Kansas with his parents in 1881 when he was but a child. The firm owns the furniture store located at 312 South Main street where a carefully and well selected line of all that is desirable in furniture can be had at all times. Here can be found the articles of furniture to completely furnish a modern home. The

store is a new one and all the goods are the latest products of the leading furniture makers of the east and includes the well known Helmers line of goods. Since this business was established it has been the motto at the store to give satisfaction or money refunded. A visit to this store is a treat for anybody and those living outside the city are especially invited to pay the store a call and see the new things that are on display. Mr. Doan is an enterprising and progressive citizen and a booster for Pratt and Pratt county. See them for high grade furniture.

||=====||

G. W. DOAN & CO.

||=====||

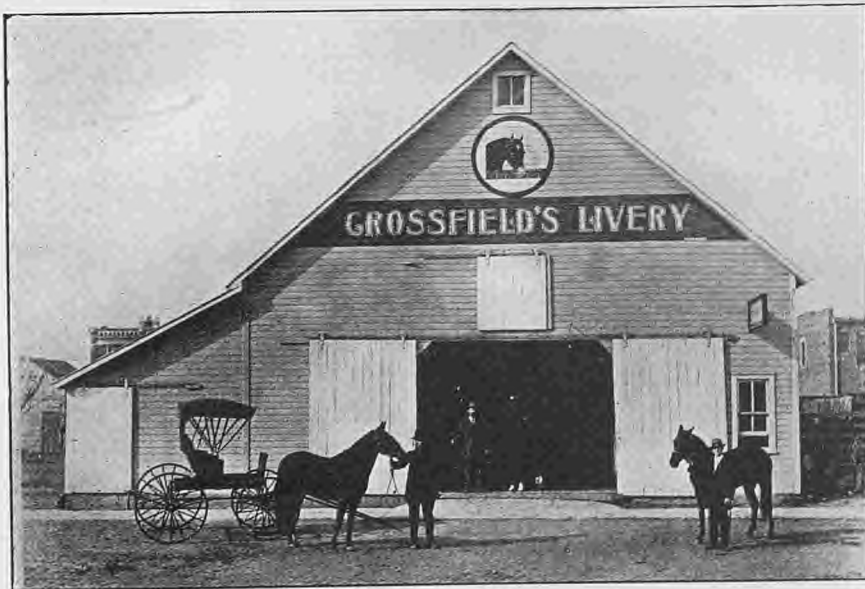
GEORGE S. SCANTLIN & CO.



Showing Mill, Implement, Vehicle and Engine Departments, also Office of George S. Scantlin & Co., Pratt, Kansas.

The spring season of 1911 finds the George S. Scantlin and Co. warerooms filled with one of the finest lines of farming implements, wagons, carriages, etc. that can be found in western Kansas. This firm is composed of George S. Scantlin, a native of Missouri, who has spent several years in business in this city, and A. A. Doan, a native of Kansas and for the past three years engaged in business in this city. These gentlemen are familiar with farming conditions in this state, and therefore are enabled to carry a line of goods that are especially adapted for use in this section of the state. In the implement line they carry the famous John Deere Implement Co.'s line of goods, the kind that the sun never sets on. In the carriage line the well known Velle brand is carried in a wide variety of design and price. Moline, Turnbull and other makes of heavy and light farm wagons are carried in a well selected assortment.

They are agents for the International Automobile truck, which is giving general satisfaction wherever used. A fine line of gasoline engines for all purposes are carried in stock and are priced according to their real value. Axle grease and all the smaller notions usually found in a modern implement store can be obtained at this company's salesrooms. This firm keeps up-to-date in the implement and vehicle line, and whenever anything new is put upon the market its merits are promptly investigated. Farmers who visit this establishment can learn a great deal about modern methods for carrying on their work.



C. E. Crossfield's Livery Barn, Pratt, Kansas.

Among the really old timers of Pratt none are better known than C. E. Crossfield who came to Pratt county thirty-five years ago, at a time when the present townsite of Pratt was a grazing place for which Mr. Crossfield assisted in herding at that time. At the present time Mr. Crossfield conducts an up-to-date livery and feed stable on south Ninnescah street. He keeps in his barn nothing but dependable driving

horses and can furnish rigs for all occasions and will furnish reliable drivers when requested. Calls are answered day or night and a telephone call will receive prompt attention. Mr. Crossfield is a native of Missouri and has been engaged in the live stock business all of the time since coming to Kansas. He has seen the city of Pratt grow from a spot in a big grazing belt to one of the best little towns in the state and is a booster of Pratt and Pratt county.

||=====||
DODSON
 AND
DODSON.

||=====||
 The firm of Dodson and Dodson is composed of B. F. Dodson and his son A. I. Dodson. They conduct the hardware and implement store at 221 South Main street. At this store can always be found a full line of heavy and shelf hardware and building material. In the implement department the famous Parlin and Orendorf line is carried and includes everything needed for the scientific cultivation of the soil. They also carry a fine line of DeVoe and Reynolds Sunproof paint, the kind that gives satisfaction wherever tried. In washing machines they handle the famous "One-Minute Washer" which gives universal satisfaction. Deering farm machinery is carried in a carefully and well selected stock, Waterloo engines for all purposes are sold at prices consistent with the best quality, and for the Spring season the Rev-O-Noc ice boxes and refrigerators are sold, and of the eighteen sold at this store last year not one was found to be deficient in workmanship or material. In the range line the Bridge-Beech brand is carried and some idea of



Hardware Store of Dodson & Dodson, Pratt, Kansas.

the big stock can be derived from knowing that you can find twenty-five designs to select from. Detroit-Vapor gasoline stoves are sold here. This company is the agent for the Singer Sewing Machine and sold twenty-seven of them since December 1st. The elder member of this firm has lived in Pratt county thirty-five years and has seen the development of the town of Pratt from its earliest days. A. L. Dodson was born in this county and has grown up with the town and county. Their success is due to square dealing business methods and a knowledge of how to buy the best of goods for their trade. A full line of garden seeds have been received and the line is full and complete.



James A. Porter, Ex-County Treasurer of Pratt County.

JAMES A. PORTER.

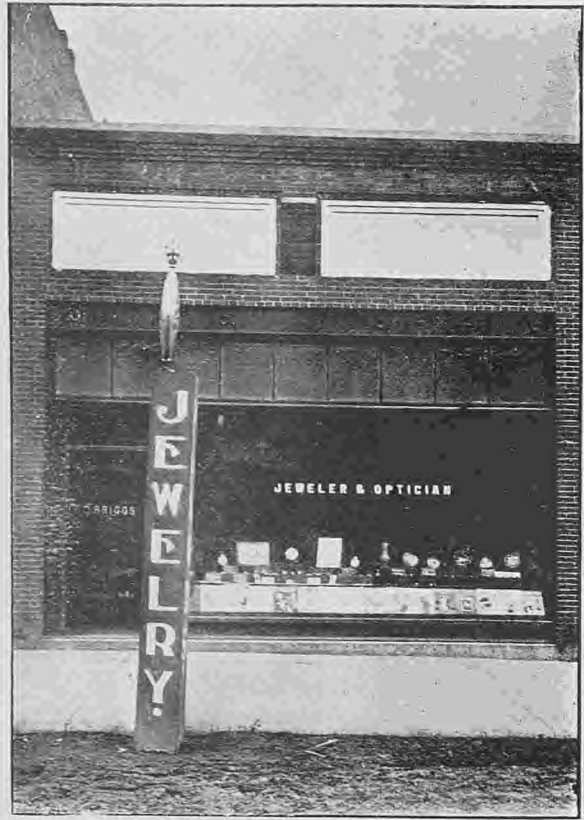
Mr. James A. Porter is another old resident of Pratt, having resided here since 1884. He was born in Cambria County, Pennsylvania. In 1884 he took up a claim in Pratt County, and has been identified with county affairs ever since that time. He was in the abstract business in Pratt for a number of years, and then was elected Register of Deeds for two terms. This office he filled so satisfactorily that he was afterward chosen County Treasurer, and has held that office for nine years, not being a candidate for re-election in 1910. He was also Deputy County Treasurer for four years. Taken altogether, Mr. Porter has held County office for over 17 years. He is a gentleman of sterling integrity and his friends are legion.



Harvest Scene in Pratt County.

F. C. BRIGGS.

One of the newly established business enterprises in Pratt, and one that adds much to the commercial attractiveness of the city is the jewelry store at 308 South Main street, conducted by F. C. Briggs. Mr. Briggs is a native of this county and established his present business about a year and a half ago. Previous to this time he was connected with the postoffice in this city and made a host of friends. At his store one can find an excellent line of jewelry of all kinds, consisting of watches, rings, chains, brooches, etc., in all the latest designs and in a wide variety of prices. In cut glass he handles the famous Maple Leaf brand, which is noted for its durability and clearness. He also carries a full line of musical instruments and sells the well known and popular Baldwin pianos and Columbia and Victor talking machines. For the talking machines he carries a well selected line of records which are kept up-to-date by monthly additions to the list of titles. Mr. Briggs is a graduate and registered optician having successfully passed the examination which is now demanded by the state board of examiners. He carries a large assortment of lenses and can fit glasses to eyes that have become impaired from any cause whatever. A full line of all the popular sheet music, both instrumental and vocal is always carried in stock, and if the piece you want is not on hand it will be obtained for you. Drop into the store and see the new things in jewelry and hear some of the new music on the talking machines. You'll be welcome.



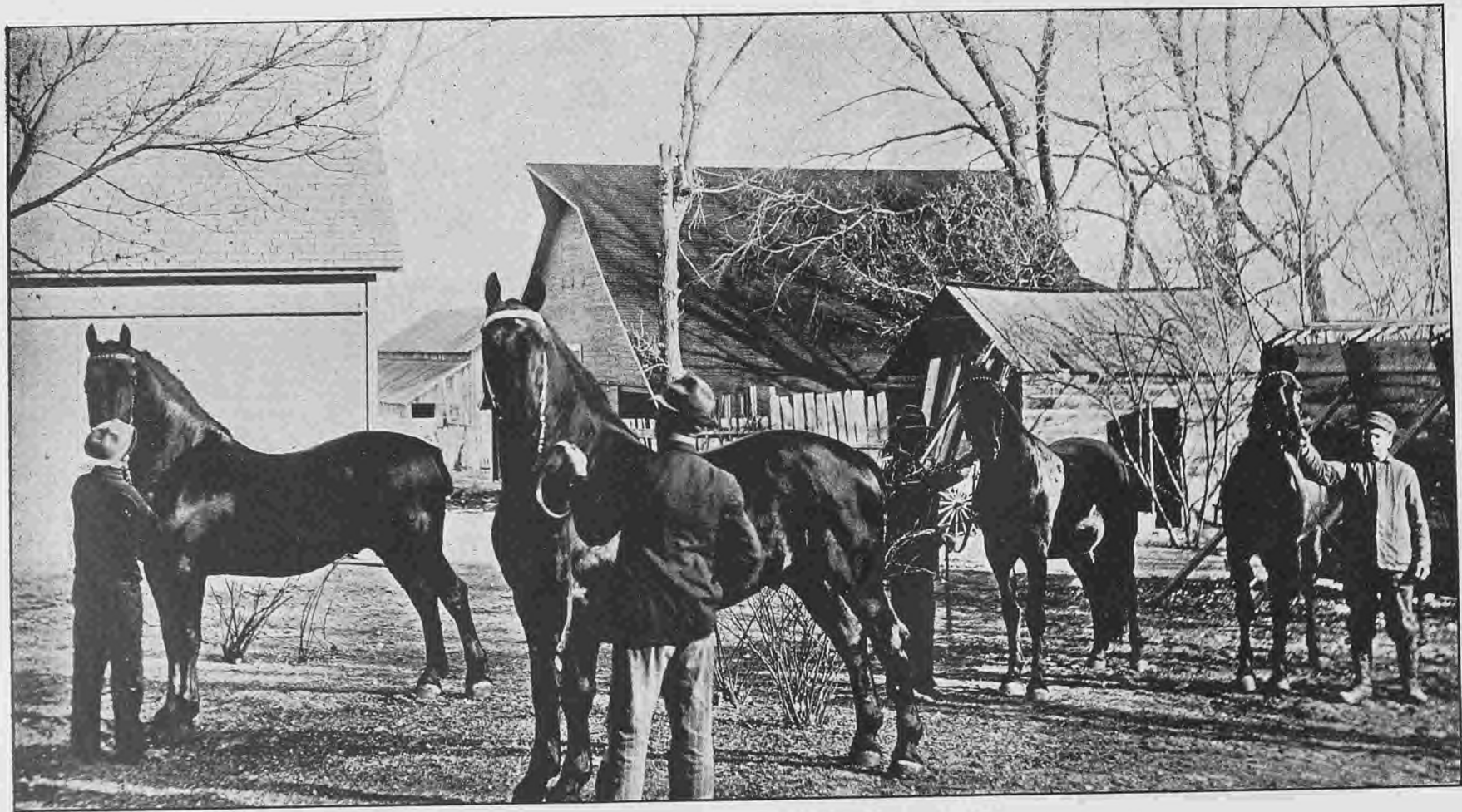
Fred Briggs' Jewelry Store, Pratt, Kansas.



Richardson Auto Tire Repairing Co.

This firm is composed of J. E. Richardson and Wm. Zimmerman. They came to Pratt a short time ago from St. John and are already becoming well known for the quality of their tire repair work. They have an up-to-date plant and they use the steam process in doing their vulcanizing. The use of this process means that the part of the tire needing repairs, after it is finished will

last as long as the tire lasts. Mr. Richardson was with the G. & J. Co. for several years, and learned every detail of tire construction, which fits him thoroughly for the repair business. People bring their tires to him from all over Pratt County and the surrounding counties and already this enterprising firm has built up a large business.



Group of German Coach Horses, J. C. Bergner & Sons' Ranch, Pratt County, Kansas.

||=====||

J. C. BERGNER
& SONS.

||=====||



J. C. Bergner & Sons' Ranch House.

As an example of what can be done in Pratt County by a man with a little capital and a willingness to work, J. C. Bergner stands very prominent. Mr. Bergner was born in Leer-Ostfriesland, Germany, and came to America when quite young. He followed farming at Freeport and Baileysville, Ills., for some years and then went to Turner County, South Dakota, where he stayed for fifteen years. While there he tried raising heavy draught horses, but did not find such heavy horses profitable. He then experimented with Imported German Coach horses, and found beyond a doubt that they were by far the best for general purpose horses, having plenty of bone and muscle, and being of just the right weight. He also found that they were the best for producing good sized marketable mules. In 1901 Mr. Bergner came to Pratt County and bought the Waldock Ranch, which contains 1500 acres in the home ranch. Besides this he owns 880 acres in another part of the county. He now has about sixty-five head of horses and mules and twenty head of Imported German Coach mares and is breeding all the time. Among the Imported stallions brought over from Germany by Mr. Bergner may be mentioned ZIBO, 4999; MEPHISTOPHELES, 4221; MIKUS, 4861;

and MILLO, 4601. In 1910 at the Kansas State Fair at Hutchinson, J. C. Bergner & Sons were awarded 19 first prizes, and 12 second prizes on their German Coach horses, and for the same breed they were awarded 12 firsts and 8 seconds at the Wichita Fair the same year. They have enough Blue Ribbons to start a ribbon counter. Mr. Bergner's ranch is complete in every way. He has never bought a dollar's worth of fuel since he has lived there. He has his own timber, and his own saw mill. Recently he sawed out over thirty thousand feet of dimension lumber, and is about to build another barn 85x100 in addition to the number he already has. His ranch house is commodious and well built, and close by is a large and beautiful lake, teeming with fish and covered with ducks during the season, which is leased by the Wichita Gun Club. Mr. Bergner is very enthusiastic about what a man can accomplish in Pratt County. He says that he had very little money when he came here and he has averaged \$10,000 clear every year for the ten years he has been here. Last year he cleared \$1500 on Alfalfa seed alone. This year he has 110 acres in alfalfa and expects to increase this acreage before long. A trip to his ranch and a talk with Mr. Bergner will prove interesting to anyone.

REUBEN F. CRICK.



R. F. Crick, Attorney for Pratt County.

Another old timer in Pratt County is County Attorney Reuben F. Crick. He came to Pratt twenty-six years ago, and has seen all the ups and downs in the county from then to the present day. Mr. Crick was raised on a farm, and after his school days were over, he studied law with John Q. Thompson, Assistant United States Attorney General, and since being admitted to the Bar, he has built up a fine practice. He was County Superintendent of Schools for four years, and is now County Attorney of Pratt County. Mr. Crick is a gentleman of most pleasing personality, and this has gained him many friends. He is an enthusiastic believer in the future bright prospects of Pratt as a city, and is untiring in his efforts for the advancement of the prosperity of Pratt, and is an influential member of the Pratt Commercial Club. Taken all together, Mr. Crick is a type of citizen who is a credit to the community fortunate enough to secure him as a resident.



Office of M. S. Young, Register of Deeds for Pratt County, Register Young in the Foreground.

Mr. Young was born in Pratt County, and is proud of that fact, and Pratt County is proud of it too. He served as Deputy Register of Deeds for seven years and so highly were his services ap-

preciated, that at the election last fall, he was elected Register of Deeds, a position which he fills with honor to himself, and profit to Pratt County.

||====||
C. R. MAWDSLEY.



Office of the Pratt County Treasurer, in the County Court House at Pratt, Kansas, County Treasurer Chas. R. Mawdsley on the left.

||====||
Few men in this section of Kansas are better known or are more universally liked than the subject of this sketch, C. R. Mawdsley. Mr. Mawdsley is a native of the Sunflower State, was born in Brown county in 1869, and has been a resident of Kansas nearly all his life. In 1888 he came to this county and for the past ten years has been engaged in the insurance business—a business which he has built up to large proportions. Mr. Mawdsley is a man of sterling qualities, a tireless worker for every good cause, and ranks among the leaders in every endeavor for the good of the entire community. Mr. Mawdsley has an enviable patronage in the insurance business from the fact that his dealings with every policy holder have been careful and painstaking,

and ever alert to their personal interests. He writes policies for some of the best American and foreign companies and all manner of life, fire and hail insurance is included. To show Mr. Mawdsley's popularity in Pratt county we might call attention to the fact that at the recent election he was chosen from a strong field by an overwhelming majority as county treasurer of Pratt county, an office which we are sure he will fill with the greatest of efficiency.

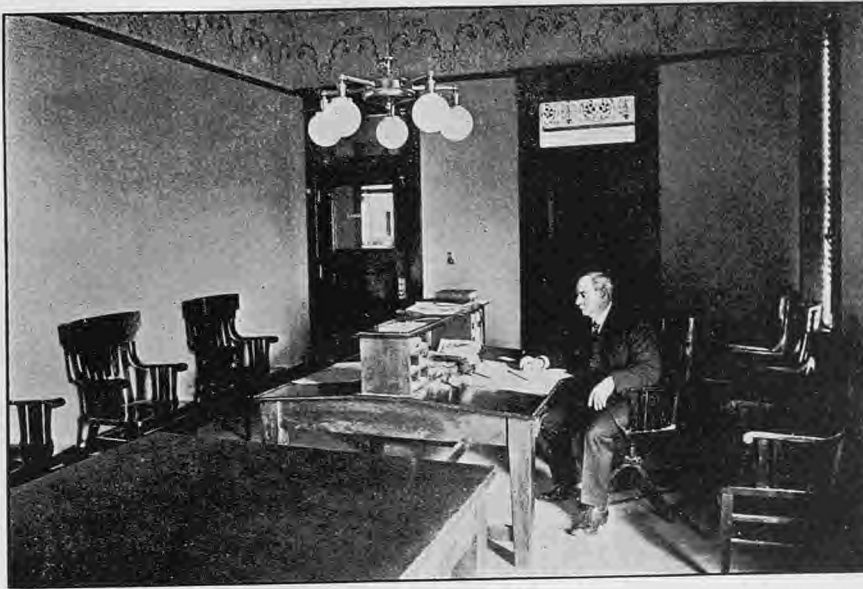
||====||
JAS. A. WILSON.



Office of the Clerk of the District Court in the Pratt County Court House, Pratt, Kansas, Showing Mr. James A. Wilson at His Desk.

||====||
Mr. Wilson was born in Cloverdale, Putnam County, Indiana, and came to Pratt County in 1884, so that he is another old timer in Kansas. For twenty-one years he was a clerk in a general merchandise store in Pratt, and then his ability

was recognized, and he is now serving his third term as Clerk of the District Court of Pratt County. This office he has filled so ably that the attorneys who practice in this court would be glad to see him remain in office for an indefinite time.



Office of Probate Judge in Pratt County Court House, Showing Judge Lee T. Fisher at His Desk.

The Rev. Lee T. Fisher was born in Oxford, Butler County, Ohio, and was educated at Miami University. He enlisted during the Civil War, and served for two years in the 11th Indiana, and 148th Indiana Volunteer Infantry. He also held a commission as First Lieutenant in the 106th Indiana Infantry. He was Pastor of the First Baptist Church at Alva, Oklahoma, for a term of years, resigning in 1905 to come to Pratt, and became

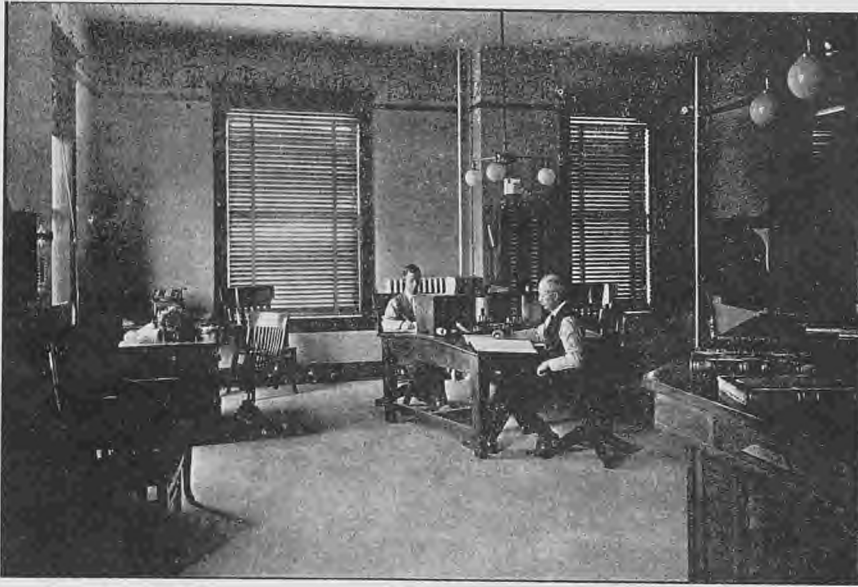
Pastor of the First Baptist Church of Pratt. In 1910, his friends insisted on his being a candidate for the office of Probate Judge, and he was elected by a large majority. He resigned his Pastorate in order that he might accept the office to which he was elected, but still preaches occasionally. Mr. Fisher is well qualified to fulfill the duties of a judicial office, and his many friends sincerely hope that his services may extend over a long term of years.



Mrs. Mattie O. Hilliard, Pratt County Superintendent of Schools in Her Office in the Pratt County Court House, Pratt, Kansas.

Mrs. Mattie Hilliard was born in Warren County, Iowa, and came to Pratt in 1883. She taught school in Pratt County for twelve years. So highly were her abilities along educational lines regarded, that she was chosen three times as County Superintendent of Schools, and last No-

ember she was elected for a fourth term which will commence next May. Mrs. Hilliard possesses a strong personality, coupled with great executive ability, and these qualities make her peculiarly adapted to the duties of the office she has occupied so long.



Office of County Clerk of Pratt County, Showing County Clerk S. J. Allmon in Foreground, Deputy Wilson Behind Desk.

Mr. Allmon was born in Bollinger County, near Marble Hill, Missouri, and came to Pratt County on June 7th, 1878. He farmed from that time until 1906, when he was elected County Clerk of Pratt County. So well did he serve the people in this office, that he has been twice re-elected since

then, and is now serving his third term. Mr. Allmon is a gentleman of most pleasing personality, and his unfailing courtesy to all who have business to transact with his office has gained him a legion of friends who would like nothing better than to see him continue in the office which he so ably fills.



**THE NEW
WARDROBE.**



The tailoring establishment located in the Peoples Bank building on East Third street is now owned by the firm of Quarrels & Skillen which is composed of W. C. Quarrels and Geo. Skillen. These gentlemen have been in charge of this establishment for about five weeks and are prepared to fill orders for clothing for men who want the best of goods for the least money. Both these gentlemen have had years of experience in the tailoring business and before engaging in business for themselves were employed at the leading shops in Pratt. Mr. Skillen is a tailor of more than exceptional ability as can be seen by an examina-



The New Wardrobe, Pratt, Kansas, Quarrels & Skillen, Proprietors.

tion of his work. He was raised in the tailoring business and has a thorough knowledge of all branches of the work. Repairing for both ladies and gentlemen, and steam and dry cleaning are also done at this shop and all work guaranteed. An order for a suit or repair work will receive prompt and skillful attention.

||====||
G. SNEED.
||====||



G. Sneed & Son's Store, Pratt, Kansas.

In western Kansas there is no mercantile establishment that is more popular with the buying public than the establishment of G. Sneed located at 206 South Main street. At this store one can find anything that can be found at an up-to-date general store, and the one big feature that has made the store popular, is the fact that all goods are sold for cash at prices that are much lower than are usually paid for the same class of goods. In the 5 and 10 cent departments, bargain hunters can find just what they are looking for in the way of notions, glassware, china, etc. In the grocery department all the best in staple and fancy goods are carried, as well as all the leading brands of canned goods. In the ladies' and gents' furnishing goods department the most exacting can be pleased in price and quality at all times, and the stock is always kept large enough to allow a big assortment. In the shoe department such well known brands as a Sir Knight, made by the Wertheimer Swartz Co., of St. Louis, and the Bentley and Olmstead line of Des Moines, are represented with a large

and varied selection. Mr. Sneed is a native of Illinois, and has been in business in this city for the past two years, and it has been his aim—and a successful one too—to conduct a store where can be found everything for everybody, and by selling at a small margin of profit and handling the best in the different lines, he has made his store popular with all members of the families of southwestern Kansas. When you are visiting Pratt a short time spent at the Sneed store will not be lost as it is well worth one's time to see the large display of reasonable goods that can always be found on the shelves and counters at this store.



H. Harrel's Livery Barn, Pratt, Kansas.

One of the really old timers of Pratt is H. Harrel who conducts a first class livery, feed and sale stable at the corner of Third and Jackson, where one can secure at all times livery rigs for any kind of a drive as well as dependable saddle horses for all occasions. Mr. Harrel has been a resident of Pratt county for the past twenty-five years, and has kept up with the growing demands made upon his services by installing an automobile livery, making it possible for those in a hurry to reach the surrounding towns in the shortest possible time. He makes a specialty of taking traveling men to other towns in

||====||
H. HARREL.
||====||

this and surrounding counties and his prices are in keeping with reliable, safe and sure service. His horses are all well broke, and those who desire a driver when making a trip will be supplied with experienced men, who know the roads of the county and the shortest and best route to any of the surrounding towns. Parties visiting the city can have their teams properly taken care of at this stable at a reasonable cost. Mr. Harrel is a booster for the town and is always ready to speak a good word for Pratt, and Pratt county.

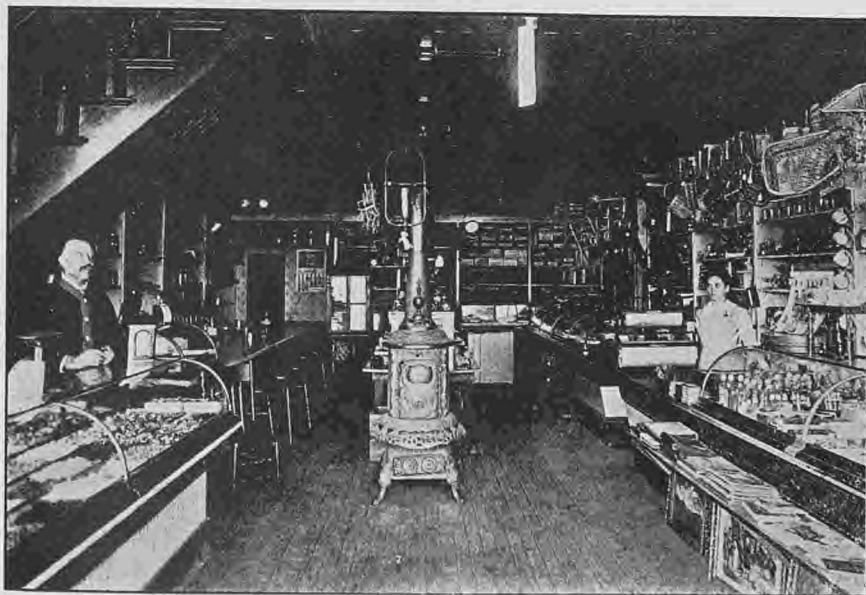
||====||
P. & F. DRUG CO.
 ||====||



P. & F. Drug Co., Pratt, Kansas.

This firm consists of W. T. Peel and his son-in-law C. H. Fain. They are engaged in the Drug business, and are well known in Pratt county. Mr. Peel was born in Lexington, Kentucky, and came to Pratt twenty-three years ago and engaged in the bakery and restaurant business. He conducted this business for twenty years and about three years ago he started the present drug business taking his son-in-law as a partner. They carry a full line of drugs and sundries, and all kinds of stationery, confectionary and toilet articles, and in fact everything that is usually carried in stock by an up-to-date drug store. Mr. Fain is a graduate in Pharmacy, and at present is at Baylor University, Dallas, Texas, taking a course in medicine. He expects to finish this year. This firm has always striv-

en to keep a fresh stock of drugs on hand, and they make a specialty of prescriptions. Their soda fountain is one of the best in the county, and it is always possible to get something nice in the way of ice-cream sundaes, soda, etc., at this fountain. By strict attention to business they have built up a splendid trade, which is still growing.



F. H. Fuller's Fair Store, Pratt, Kansas.

||====||
**F. H. FULLER'S
 FAIR STORE.**
 ||====||

Mr. F. H. Fuller established his Fair Store in Pratt several years ago, and by hard work, attending to the wants of the people, and square business dealings, he has built up a good and profitable business. He carries a complete stock of goods which are usually handled by a store of this kind, and as he knows how to buy right, many good values will be found at all times at his store. Mr. Fuller is an active member of the Commer-

cial Club, is always ready to do his share towards boosting, and is a good all around citizen, he is highly regarded in Pratt. He also carries a complete line of confectionery, cigars and tobacco, besides fruit in season, and cold drinks of all kinds. He has shown considerable enterprise since coming to Pratt, and is considerably interested in Pratt's future development. Taken altogether, Mr. Fuller is a citizen of whom any city might well be proud.

||=====||

H. C. PEDIGO
& SON.

||=====||



Hardware Store of H. C. Pedigo & Son, Pratt, Kansas.

The members of this enterprising firm are H. C. Pedigo, and his son Walter Pedigo. H. C. Pedigo came to Pratt in 1884, which was the year Pratt was founded, therefore he is a bona fide Pioneer of Pratt. Thirteen years ago, he founded the present business, and today the firm has a hardware business that will hold its own with any in Southwestern Kansas. They have always kept abreast with the times, and have been quick to grasp opportunities when possible. As an instance of this, may be mentioned the fact that they are sole agents in their territory for a number of lines of staple goods, which have a ready sale in all parts of the world. Among these may

be mentioned the famous Majestic Ranges, Standard Oil Co. Cook stoves, the well-known De Laval Cream Separator, and celebrated Masury Paints, besides a number of other lines of which space will not permit mention. This firm is known all over Western Kansas as being straightforward in all their dealings, and their word is as good as their bond. They carry everything in the hardware line, besides many specialties which the ordinary hardware store does not usually handle. Mr. Pedigo has one of the most beautiful residences in Pratt, and that is saying a great deal. A picture of this beautiful house is shown in this book. Mr. Walter Pedigo is also Secretary of the Pratt County Fair Association.



A. G. CUMMING.

The man that masters whatever branch he decides to pursue, renders most good to his fellow-man, or to society, and we have no more convincing proof of this fact than is exemplified in A. G. Cumming, who conducts one of the very best harness and saddle shops in this part of Kansas. Mr. Cumming has been in this business for sev-

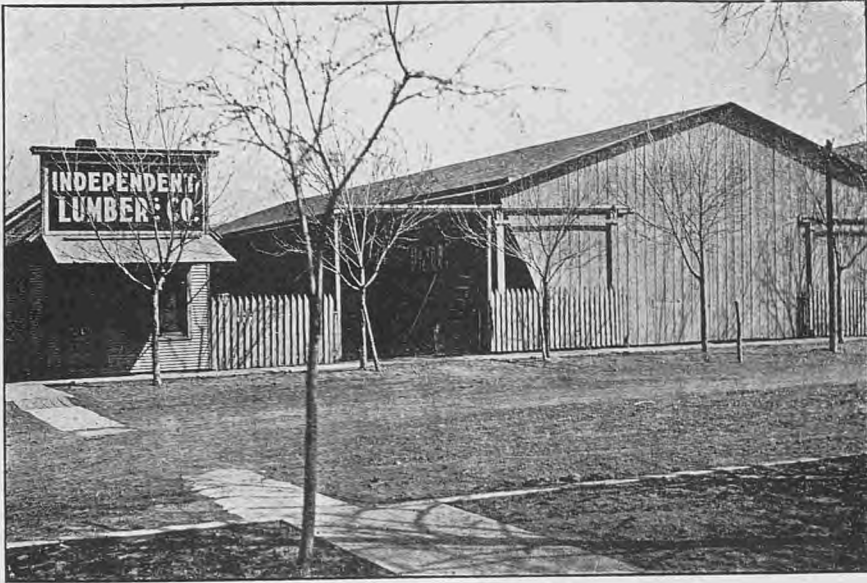
eral years and during that time has built up a fine trade due to his unusually upright dealings with his many customers, who come from all points of the compass, knowing that any product purchased from him is just as represented, and the prices are always right. He also has a good repair business and does cleaning and oiling. His phone number is 32.

Catalogue Houses and the Rural Parcel Post.

The bill establishing a Rural Parcels Post, if enacted by Congress, would destroy the Country Towns, because it would destroy the trade which alone sustains them, and the opportunities now created by that trade for the employment of population and the investment of capital in those towns.

It would destroy the property in thousands of towns—property now worth countless millions of dollars—and injure every owner of property in every Country Town. It would injure every farmer, because the destruction of the prosperity of the local town would react on all farm values. The farm would be worth less money, the Home Market now afforded by the Town would be gone, and all social and educational opportunities afforded by a prosperous Town would no longer contribute to the advantages of farm life and to the market value of farms. A local Rural Parcels Post would revolutionize the whole American System of Merchandise Distribution. It would put the Jobber and the Country Merchant out of business, and turn hundreds of millions of dollars of Annual Trade now done by Jobbers and Country Merchants into Mail Order channels. Not only the Country Towns, but every small city where prosperous Jobbing concerns are now located would suffer when the disaster of this Commercial Cyclone struck them. No one would be benefitted by a local Rural Parcels Post but the great Retail Catalogue Houses in the large cities, to whom the trade of the towns would be transferred by the mail order system, and the Express Companies. A Local Rural Parcels Post would benefit the Express Companies because it would increase their business and create no competition for them in any way. A General Parcels Post would permit packages of merchandise to be shipped by mail from any Post Office in the United States to any other Post Office in the United States at a flat postage rate that would be the same for three thousand miles as for one mile. The scheme for a Rural Parcels Post is a very different proposition. It would provide only for carrying parcels over the "Rural Delivery Routes" which were mailed at the particular Post Office where the Rural Route initiates or begins, over which the parcel is to be carried to its destination on the Rural Route. Consequently any person desiring to send a parcel from any other Post Office than the one where the Rural Route initiates, would have to send it by express to that place, and pay the Express Company for transporting it and depositing it in the Local Post Office. Nothing could be more absurd than to favor the Rural Route Local Parcels Post under the delusion that it would curb the Express Companies. The bill for a local Rural Parcels Post should be entitled, "A bill to relieve the Express Companies from competition and to subsidize a mail order monopoly by making the rural carriers a part of the delivery system of the big mail order houses. The big retail catalogue mail order houses would have a local

agent in every town who would devote all his time to soliciting orders from their catalogues on commission. He would need no store, pay no rent, employ no clerks, carry no stock, and therefore would be of very little service to the community where he resided. The first thing he would do would be to distribute his catalogues to all the families in his territory, and then follow this up by systematic soliciting, from the Mail Order House Catalogue. When he secured sufficient orders to warrant a shipment, the goods would come by freight to the town where he had his headquarters, and then he would hire a truck and have them hauled to the local Post Office where the rural route started, and the rural route carrier would make the final delivery. This would give the death blow to the commercial life of every small town in all this wide country. If the country merchant could do business with his customers on the same system as the large Mail Order Houses are doing he could make double the amount of money which he is making now. In the first place he would be doing a strictly cash business. No matter how closely a merchant may scrutinize his accounts, he is absolutely sure to carry on his books a certain amount of bad bills and slow payers. When he strikes a trial balance at the end of a year, these bad accounts bring his average profit for that year down to a much lower figure. Now suppose that a man was to walk into a merchant's store, and ask the merchant whether he had a certain piece of goods at a certain price, and the merchant said, "Yes, sir." Then suppose the customer said, "Let me see the article," and the merchant said, "No, you cannot see them, until you have paid for them. But I will show you a picture of them." How quickly the customer would rush out of that store, telling all whom he met that the proprietor was crazy. And yet all the people who are buying goods from a Mail Order Catalogue are doing that very thing and worse every time they make a purchase, because they know the local merchant whom they will not trust with their money in advance, but they do not know the strangers, hundreds and perhaps thousands of miles away, to whom they send their Money Orders or Express Orders, or Registered Letters containing currency to cover the amount of their purchase, plus the freight. How absurd this seems when we stop to consider it. Let a local merchant refuse to take the personal check of his customer, and say, "I want cash, or a Money Order in payment for my goods," and the customer would regard it as a deadly insult. Yet he submits to the very same insult from a stranger who manages the Mail Order business of a Catalogue house. For they distinctly say that they will not accept personal checks in payment of goods. Another thing is the fact that they never care to sell standard goods, which bear a trade mark which has withstood the test of time, and which is a guarantee of quality. Instead they are continually calling attention to the fact that this article or that article "Is made in our own factory," as though that was a guarantee of anything. Those have good reason to know that it stands for about as cheap and inferior grade of goods, as it is possible to manufacture, and still be saleable,



Independent Lumber Co., Pratt, Kansas, J. V. Harkrader, Manager.

INDEPENDENT LUMBER CO.

The Independent Lumber Company was organized in 1907, and since that time their business has increased greatly, which is owing to the able management of Mr. J. V. Harkrader in great part, and also to the quality of goods which this company handles. They make a specialty of flooring and inside finish. This company is made up of a number of the representative business men of Pratt. Mr. Geo. Lemon is President, H. F. Williamson Vice President, and J. V. Harkrader Secretary and Treasurer. All of these gentlemen are prominent in Pratt business circles, and with their influence and large acquaintance, it is not wonderful that they are doing a large business. In addition to their lumber business, they do a large business with the Patterson-Sargent Paints and Varnishes. This line is known and celebrated all over the civilized world. Then they do a big business in plate and window glass.

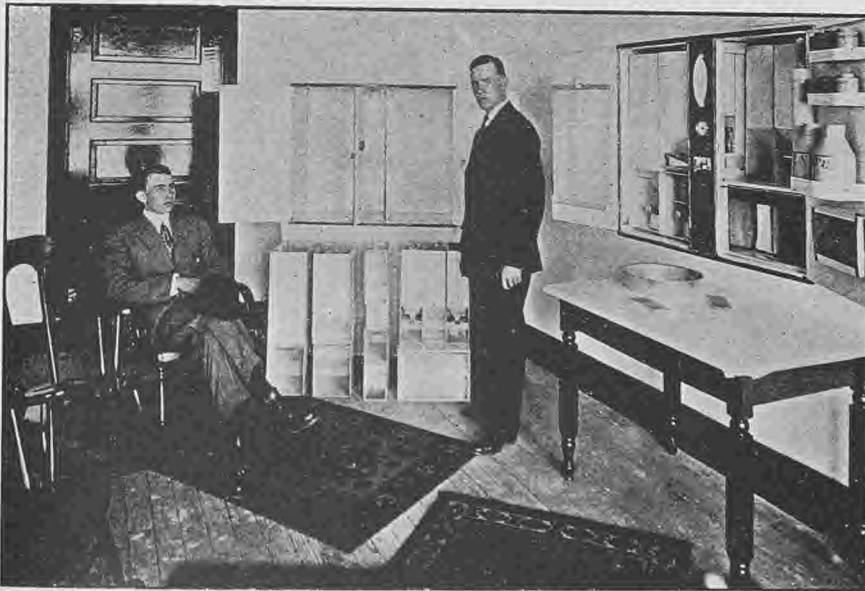
THE PHOENIX
SMOKE HOUSE.



Phoenix Smoke House, Barber Shop and Pool and Billiard Hall,
McDowell & Trautman, Proprietors, Pratt, Kansas.

One of the leading places of amusement in the City is the Phoenix Smoke House and Billiard and Pool Parlor. The proprietors of this modern and up-to-date establishment are N. R. McDowell and C. E. Trautman. N. R. McDowell was born in Nebraska, and has lived in Pratt for several years. Mr. C. E. Trautman was born in Illinois and has lived in Kansas since 1885. He came to Pratt four years ago. About two years ago these enterprising gentlemen bought the Phoenix Smoke House, and by their courteous treatment of their patrons, and their hustling business methods they have doubled their business during the past year. They carry a full line of Imported and Domestic Cigars, Tobaccos, Pipes, etc., all of the leading newspapers and magazines, and also main-

tain a first class barber shop in connection, where only the best barbers are employed. They have a large circle of friends, and their place always presents a busy appearance. Both of these gentlemen are hustlers and business men of ability, and the success they have attained in a business way, is owing to these qualities. They are loyal boosters for Pratt, and they do not care who knows it either.



White House Cabinet Demonstration Room, Pratt, Kansas.
Manager Connelly Seated in Chair.

J. E. Connelly is territorial manager for the Mutual Advertising Company, who are the makers of the famous White House Pantry, which is one of the most useful articles ever invented for the use of the discriminating housekeeper. It is an ingenious kitchen cabinet which hangs on the wall, directly over the kitchen table, just where it is most useful. It is made entirely of metal and can be scoured with boiling water at any time, which makes it always clean and sweet, and prevents the accumulation of harmful germs. It has double front doors which close and make

the interior airtight, and within are a large number of compartments intended to hold everything from flour to sugar. There is a neat compartment for spices, extracts, sugar, tea, coffee, etc., and in fact everything used in cooking has a place provided where it will be most convenient. Mr. Connelly was born in Pratt, and is well known in the community. He is giving demonstrations at his offices in the Harlensky block, and it will pay any one to go there and see the WHITE HOUSE CABINET demonstrated at any time before the first of June, and after that date at the furniture store of G. W. Dean & Co.

W. S. RICH.



Show Window of W. S. Rich's Shoe Store, Pratt, Kansas.

Mr. Rich has the only exclusive shoe store in the city of Pratt, and to those who know his store, it is needless to say that he carries a full and complete stock at all times. His stock of Ladies' and Gentlemen's shoes, in addition to the children's shoes, always averages about Twelve Thousand Dollars. This is more than is usually carried by the average retail shoe store in the largest cities. Billy Rich, as his friends call him, was born in Kentucky and came to Pratt in 1885. He started in the shoe business at his present location about ten years ago, and has been very successful. He is a most genial fellow at all times, and many a man and woman in Pratt and Pratt County would go miles out of their way to purchase their shoes at Rich's Shoe store. He does not handle any

brand of shoes but those bearing his own label, so that if anything should happen to be unsatisfactory about a pair of shoes, he takes the responsibility, and makes it all right, instead of blaming the manufacturer. In other words, he stands personally behind every pair of shoes sold in his store. He also has the latest shoe repairing apparatus, and does a large amount of shoe repairing in the most workmanlike manner.

F. HARLENSKE.

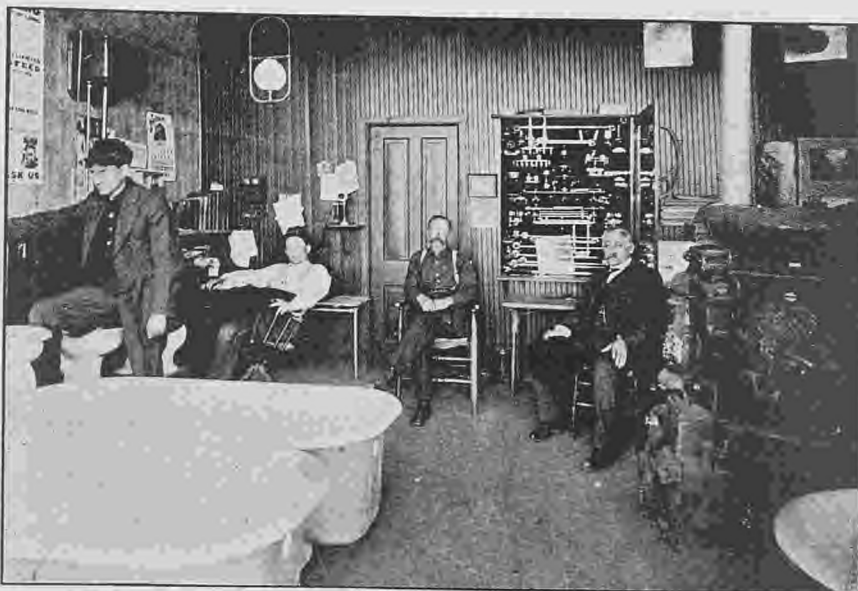


Confectionary and Ice Cream Parlor of F. Harlenske, Pratt, Kansas.

An "old timer" in these parts, and one who has seen Pratt grow from infancy, is F. Harlenske, the genial owner of one of the nicest confectionary and ice cream parlors in this part of the state. Mr. Harlenske, who is of German birth came to America in 1867. For some time he resided in Wisconsin and Iowa, and came to Pratt in 1885, a year after the town was founded. He has been in the confectionary business ever since his arrival, and success must have crowned his efforts for he has just recently completed a fine new brick structure at 207 Main street, costing in the neighborhood of \$4,600. In the new building in which he is already located, he will have an ideal ice cream parlor. At the rear of the store is a beautiful lattice screen, representing a grape arbor overgrown with many grape vines, and showing many bunches of luscious

grapes which look good enough to eat. Many tables and chairs are there to accommodate his patrons, and all are served with the same courtesy and dispatch, with the most toothsome candies, fine confections and the daintiest ice cream and ices of many kinds and flavors—he also carries a full line of cigars and tobaccos, stationery and the Franklin Price toilet articles and perfumes.

LEGG PLUMBING &
HEATING CO.
S. R. LEGG, Mgr.



Office of Legg Plumbing & Heating Co., Pratt, Kansas.

In the matter of heating and plumbing, people cannot exercise too much care. The health, comfort and happiness of a community depends largely upon the sanitary conditions within the homes, and public buildings, and nothing contributes so much to this end as good modern plumbing coupled with perfect apparatus for heating and ventilating all apartments. In connection with this work there are many points of a practical nature that go unconsidered by architects, and to avoid trouble and extra expense, the plumbing contract should be given to a reliable firm. The Legg Plumbing & Heating Co. is such a concern. Their fixtures are up-to-date in every respect; they handle and put in the

very best of hot water, steam and air heating systems, such as the Peck-Williamson underfeed and other well known plants—and the work is done by master plumbers of wide experience in the larger metropolitan cities. Then, too, all their work is guaranteed for one year, which makes this company very popular in this community.

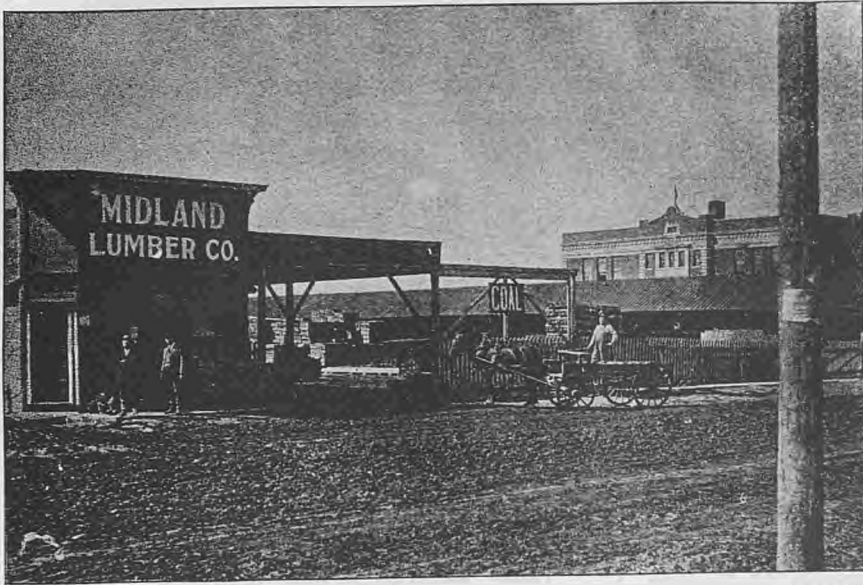
C. H. PARKS.
Hydraulic Engineer.



Shop of C. H. Parks, Hydraulic Engineer, Pratt, Kansas.

When one installs a windmill or pumping plant it gives him a great deal of satisfaction if he knows the work has been correctly done. In this line of work there is no man in western Kansas who is better known than C. H. Parks whose work shop and salesroom is located at 155 east Fourth street. Mr. Parks has been in the state of Kansas for the past fifteen years, and twelve years of that time he has been in business, five years of which were in this city. He is a native of Illinois from which state he came to Kansas. At his place of business can be found the famous Perkins Windmill, made in Wischawaka, Indiana, a windmill that is giving the same general satisfaction to thousands of users in all parts of the country. He also handles the well known and justly famous "Red Jacket" pump. Mr. Parks installs any of these machines in any part of the western part of the state, and makes a specialty of tubular wells and air pressure water systems. He sells the Fuller and Johnson

farm pumping engines and controls the patent on the Handy Windmill Coupler, a device that is becoming more and more generally used in this part of the state. Mr. Parks is a licensed plumber and installs the American radiators and steam and hot water boilers in any kind of a building, no contract being too large or too small for his attention. He employs none but skilled workmen and at the present time has three experts at work on different contracts now in course of completion. When you want anything in this line see Parks.



The Midland Lumber Co., Pratt, Kansas, J. J. Roll, Manager.

THE MIDLAND LUMBER CO.

(J. J. Roll, Mgr.)

One of the first essentials to the upbuilding of any city is a first class lumber yard and the one owned by the Midland Lumber Co. has met every demand made upon it by the people who have made Pratt a city of homes. This establishment is under the management of Mr. J. J. Roll, who has lived in Pratt County for twenty-six years and has always been found with the boosting element when any undertaking is on foot for the betterment of the city and county. He has had sixteen years experience in the lumber business and spent eleven years of this time with the Gloyd Lumber Co. of this city. When the Gloyd Co. sold out to the Midland Co. Mr. Roll continued with the new company. Mr. Roll's knowledge of building material has been a great aid to the builders of Pratt as he has become familiar with the needs of all kinds of structures when it comes to the material. At this company's yards can be found a large and well assorted stock of lumber, plaster, cement, lime, brick, lath, coal, paints and oils, and painters' supplies, as well as all the best brands of roofing. This company also has the local agency for the celebrated Iowa gates that are giving universal satisfaction to thousands of users. When you build a home or a business block let the Midland Lumber Co. figure with you on the lumber bill before you place your order.

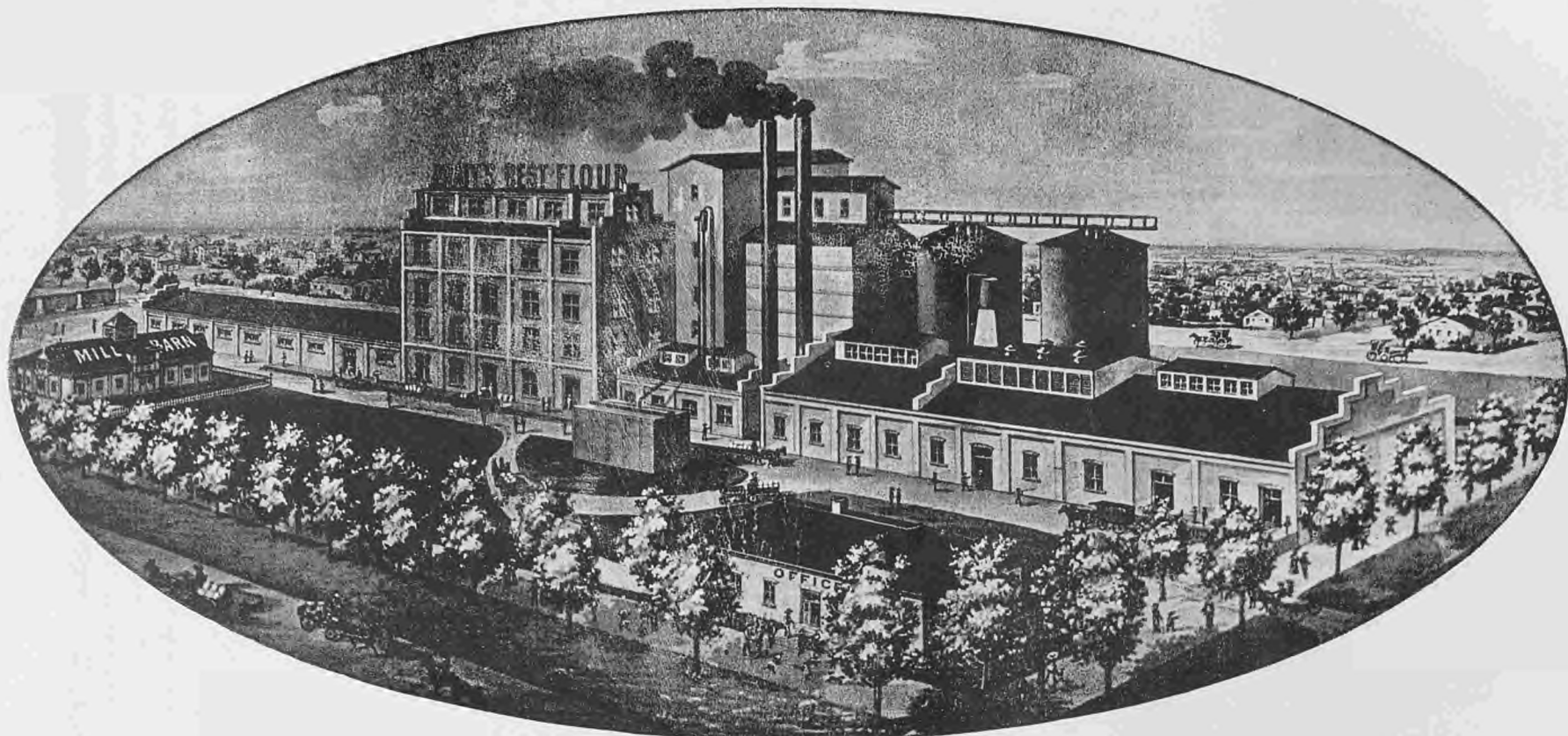


M. F. Briggs & Co. Building, Pratt, Kansas.

M. F. BRIGGS & CO.

This is one of the pioneer firms of Pratt County. It was started in 1878 under the firm name of A. Briggs & Son, A. Briggs having come from Pennsylvania to Iuka, Kansas, in that year and together with his son, M. F. Briggs, founded the firm of A. Briggs & Son, General Merchants. Later on, when the County Seat of Pratt County was removed from Iuka to Pratt, they moved their stock and business to Pratt, and the establishment has been prominently connected with the commercial life of the city ever since. In 1887 A. Briggs retired from the firm, and the present firm name was adopted. Today they occupy their own large brick block, and are doing a business of large proportions, which is the result of many years of honest dealing and knowing how to cater to the wants of the people. Mr. M. F. Briggs, who has always been in charge of the Briggs Department store, is a gentleman of most pleasing personality, which won him such popularity, that he was elected Mayor of Pratt, and has just finished a most successful term. There are three entrances to the Briggs establishment. One to the dry goods department, one to the Clothing and Shoe Department, and one to the Grocery Department. If you enter the central doorway, you

will find yourself in the Clothing Department, which is under the management of M. C. Briggs, another member of the firm, where a most complete line of high grade ready to wear clothing, shoes, gent's furnishings, hats, caps, and everything for men's wear will be found. Turn to the right through a large archway, and you will enter the Grocery Department, which is under the able management of Mr. J. M. Lucas. Pass back through the Clothing Department, with its multitude of counters and shelves piled high with seasonable goods, and you will reach the Dry Goods Department, which is now under the management of Mr. Warren Briggs, son of M. F. Briggs. This department, always popular with shoppers in the county, has, under its present management, become as complete in every detail as most of the large department stores of the largest cities. Everything in the way of seasonable dry goods and notions is shown, and the stock is always kept strictly up-to-date. Taken altogether, the Briggs Department Store, as the firm of M. F. Briggs & Co. is generally called, is a credit to the community, and this fact is pretty well recognized by the discriminating people of Pratt County.



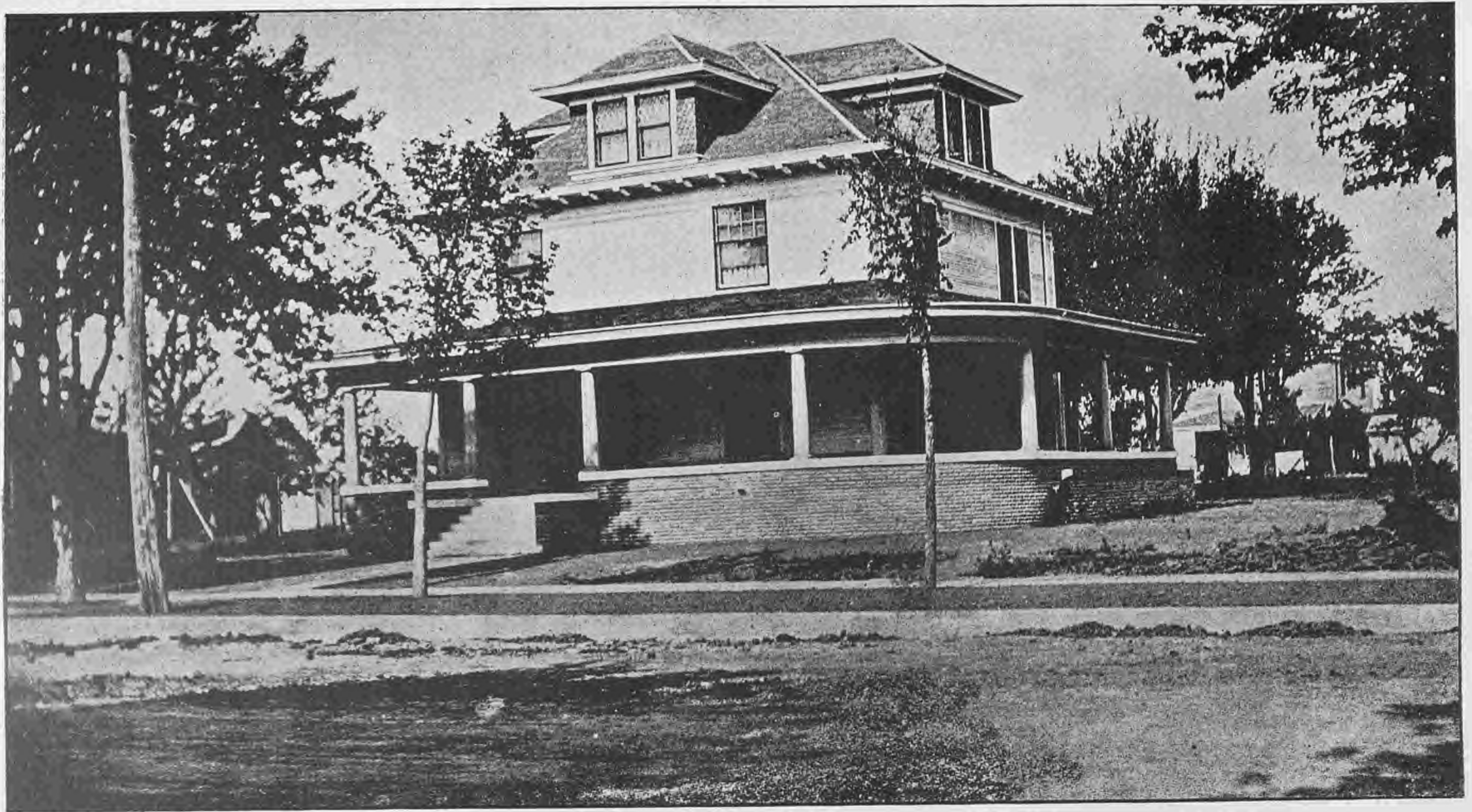
Pratt Mill & Elevator Co., Pratt, Kansas.

One of the first objects of interest to meet the gaze of a stranger coming into Pratt from the east is the big flour mill in the north end of the city, surmounted by an electrically illuminated sign which reads, "PRATT'S BEST FLOUR." It is here that the flour bearing this famous brand is made, and from here it is shipped all over the country and it enjoys an enviable reputation for quality. This mill was built in 1906 and has a capacity of six hundred barrels of flour per day. A modern electric light and power plant is also operated by this company which supplies light and power to the entire city. The plant is equipped with dynamos with a combined capacity of one hundred and seventy-five Kilowatts, sufficient to meet the demands of Pratt for years to come without any additions being made. An up-to-date ice plant is owned by this company which has a capacity of twenty tons of ice per day, the product of which is used in Pratt and the surrounding towns. It is seldom that the plant is called upon to work to capacity, and the ice manufactured comes up to the requirements of purity demanded by an exacting public. These institutions are run under the management of J. B. Hupp and the stock of the company is owned by Pratt county business men, making it a thoroughly home institution and one of which the citizens of Pratt are justly proud. This company also has a storage capacity in their elevators at Pratt of 175,000 bushels of wheat, besides 250,000 bushels at their thirteen outside elevators. This combined storage insures the Pratt Mill an ample supply of wheat at all times. The company shipped out over one million bushels of wheat from the 1910 crop, besides grinding over 800,000 bushels into Pratt's Best Flour.



GIBBENS BROTHERS.

When a person is buying real estate in any community it is best that sound advice be obtained regarding the value of the property that is under consideration. To have a knowledge of land and property values in a community is the business of the modern real estate man. Such a firm is the one with offices in the Post Office building known as Gibbens Brothers. This firm is composed of J. B. and J. R. Gibbens, both of whom have been residents of Pratt county twenty-seven years, and have lived in the state of Kansas for thirty-one years. It is this long residence in the western part of the state that has made them familiar with land values in Pratt and adjoining counties. They are natives of Illinois but gained their real estate experience in this state. They have a large list of farming land that they sell for just what it is worth, and when they place a value on a piece of land it is seldom at fault because they know the country thoroughly. Parties desiring to list farms for sale will do well to place their property in the hands of Gibbens Brothers if they desire a quick sale. Anybody in Iowa, Illinois or any of the states farther east can secure any information desired about western Kansas by addressing this firm at Pratt, Kansas.



Built by H. N. Duckworth.

Residence of C. A. Hopper.



HARRY N. DUCKWORTH.

Builder and Contractor, Pratt, Kansas.

In the contracting business there is no man or firm better known in this part of Kansas than Harry N. Duckworth whose office is located on the second floor of the People's Bank building. Mr. Duckworth is a native of Kansas and came to Pratt three years ago. Previous to that time he worked for several years at the contracting business at different points in Kansas, Colorado, and at Seattle, Washington.

Since coming to Pratt Mr. Duckworth has erected approximately one hundred buildings. Among the most prominent of these are the residences of Thad Carver, S. P. Gebhart, C. A. Hopper, Charles Devlin, John Hardesty and P. M. Gates, and the postoffice building, the Bays theatre, and the automobile garage of J. W. Farmer, and a number of others on Main street. Since locating here Mr. Duckworth has built five homes, all of which he has sold, and he is now working on another modern residence. He does a general contracting business and in addition to the buildings in this city he has executed a number of contracts in the surrounding territory, including a \$30,000.00 residence for A. F. Jones at Wichita, and a number of business blocks at Liberal, Kansas. He employs the very best of help and by fulfilling his contracts to the letter he has gained the confidence of the people of Pratt county and western Kansas. He is an enthusiastic member of the Commercial Club, and is a booster for every movement instituted for the benefit of Pratt.

**BECK BROS.
LAND CO.,**

Pratt, Kansas.

The firm of BECK BROS. LAND COMPANY is composed of J. W., R. J., and S. J. Beck and they have offices on the second floor of the Post Office building. They do a general real estate business and represent some of the leading insurance companies, as well as negotiating loans on farms and city property. These young men are natives of Pratt county and have lived here all their lives and naturally are familiar with farming and business conditions in western Kansas. They have been engaged in the real estate business about a year and a half, and by honest business methods have built up a fine business. They always have listed a number of desirable farms, grazing lands and other property from which purchasers may make selections. They have for sale at present time some choice bargains in western Kansas, Oklahoma and Colorado lands, and a postal card addressed to them will obtain



**Sam J. Beck, Jas. W. Beck, Robt. J. Beck.
Firm of Beck Bros.' Land Co., Pratt, Kansas.**

for you any information that you may desire about land or land values in this section. J. W. Beck, who can usually be found in the office is a notary public and executes work in this line at any time. If you are contemplating moving to western Kansas or Pratt to live, you would do well to first consult with this firm either in person or by letter.

**THE PRATT
MACHINE CO.**

One of the oldest concerns of this community, and one that is making a marked impression, is the Pratt Machine Co., located at 130-134 West Second street. In connection with their auto livery they have supplies of every description needed for an automobile, such as all brass goods, oils, gasoline, and everything in the repair line. But, one thing in particular that we wish to call attention to, is their fully equipped machine shop, one that might well be termed the best in Southwestern Kansas. The machinery used in this establishment is of the very latest pattern, designed for doing work of the highest order, and we must add that none but experienced and exceptionally skilled mechanics are employed to operate them; thus assuring every patron the very best in this branch of the business, at prices which are most reasonable. No other repair shop in the Southwestern part of Kansas can boast of having what this shop has in the way of welding machinery—we call special attention to what is known as the Oxy-Acetylene Welding Machine. This machine is a "Jewel" in the matter of doctoring broken parts. There is no metal that cannot be quickly and permanently repaired, especially cast iron parts, which

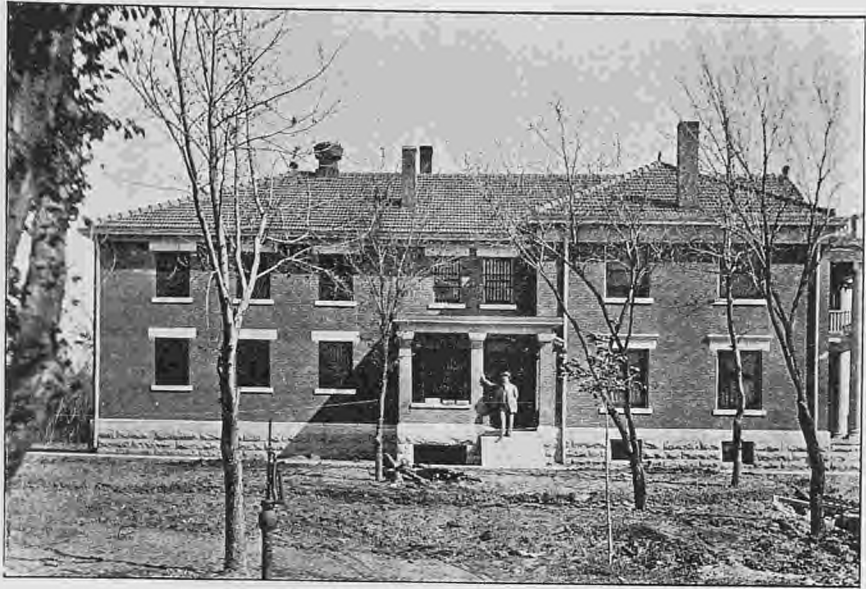


Pratt Machine Shop, Pratt, Kansas.

cannot be repaired by the average machine shop. With this apparatus any part, no matter how large or how small, old or broken, can be almost instantly made as good, or even better, than new—and the beauty of the finished work is THAT IT HOLDS. Those directly connected with The Pratt Machine Co. are M. Mawdsley, Manager; E. L. Lockett, Supt.; and Chas. R. Mawdsley, Secretary and Treasurer. They are well and favorably known and are all hustlers and boosters for Pratt. Their business is increasing because they attend to the smallest detail with care and dispatch. Their telephone No. is 347-3.

WM. BAKER

Sheriff Wm. Baker is another old timer in Pratt. He was engaged in the Livery business in Pratt for a number of years, and did a splendid business. But at the last election, the voters of Pratt County felt that Billy had all of the qualifications necessary for a good Sheriff, so they voted that way good and hard, and landed him in that office. Thereupon he sold out his Livery business, and is holding down the sheriff job in a way that makes it look like a second term for



Pratt County Jail, Sheriff Wm. Baker on Steps, Pratt, Kansas.

him when the proper time rolls around. He has a host of friends, every one of whom wishes him well.

**ROBERT
PETROWSKY.**

Above is shown a picture of Mr. Petrowsky's ranch. It is one of the representative model ranches of Pratt County, and is an example of what a man can do in Kansas, by honest work and endeavor. When Mr. Petrowsky first came to Pratt County, it was not the enlightened and progressive commonwealth it is today. He had much hard work to do, and many sacrifices to make before he could have his ranch in the shape it is in today. He has large, commodious barns and other outbuildings, and also has installed a fine gasoline engine which furnishes all the power necessary to pump water, grind corn and feed, and anything else which may be necessary. To-



Robert Petrowsky's Ranch, Pratt County, Kansas.

gether with his sons, Mr. Petrowsky keeps things moving along at the ranch, and he has prospered exceedingly, and from all indications will continue to prosper in the future. The family are highly regarded in Pratt County, as good neighbors, and model law abiding citizens. We cannot get too many of their kind in the county.

HUPP HOTEL.



The Hupp Hotel, Pratt, Kansas, J. K. Hupp, Proprietor.

A picture of the Hupp Hotel is reproduced on this page, which can give but a faint idea of the beauty of this popular little hotel. There are larger hotels scattered over the country, but there are none which are more popular with the traveling public. Mr. J. K. Hupp, Mayor of Pratt under the Commission form of Government, is the owner and proprietor, and the Hupp is the leading

hotel of Pratt. It has always been the aim of the management to minister in every way to the comfort of the guests, and that they have been successful is amply demonstrated by the fact that they are always getting as much business as they can handle. Mr. Hupp, the proprietor, is one of the old timers of Pratt, is a successful business man, and is highly regarded by all who know him.



SCOTT & HUPP
CEMENT WORKS.

Scott & Hupp Cement Works, Pratt, Kansas.

This firm consists of Mr. F. E. Scott and Mr. J. K. Hupp. The firm has been in business for four years, during which time they have established a reputation for high grade work, which is bringing them new business all the time. They do every kind of concrete work, including the building of concrete walls, sidewalks, and foundations, and they also make all kinds of concrete

blocks, columns and fancy work. Their plant is located on South Main street, where they always have a large stock of concrete tile, bricks and blocks on hand. This firm has demonstrated the fact that they can handle the largest as well as the smallest contracts. They have built a large part of the sidewalks and curbing in Pratt, and it is said of their work that when they put in any kind of concrete work, it is there to stay.



Dining Room in Frank Vail's Residence.
Built by Charles F. Heston.

CHAS. F. HESTON.
Builder and Contractor.

Mr. Heston has lived in Kansas for thirty-five years, of which seventeen were spent at Herington, where he was engaged in the building and contracting business. Four years ago he came to Pratt and engaged in the same line of business. He has been successful in Pratt, and has built a large number of houses, a few of which are shown herewith.



H. C. Pedigo Residence, Pratt, Kansas.
Built by C. F. Heston.



C. G. Stevenson's Residence, Pratt, Kansas.



C. F. Heston, Builder and Contractor.



O. J. Weseman's Residence, Pratt, Kansas.



G. Sneed's Residence, Pratt, Kansas.



H. H. Dale's Residence, Pratt, Kansas.

Some of C. F. Heston's Good Ones.



Buena Vista Heights on a Busy Day.

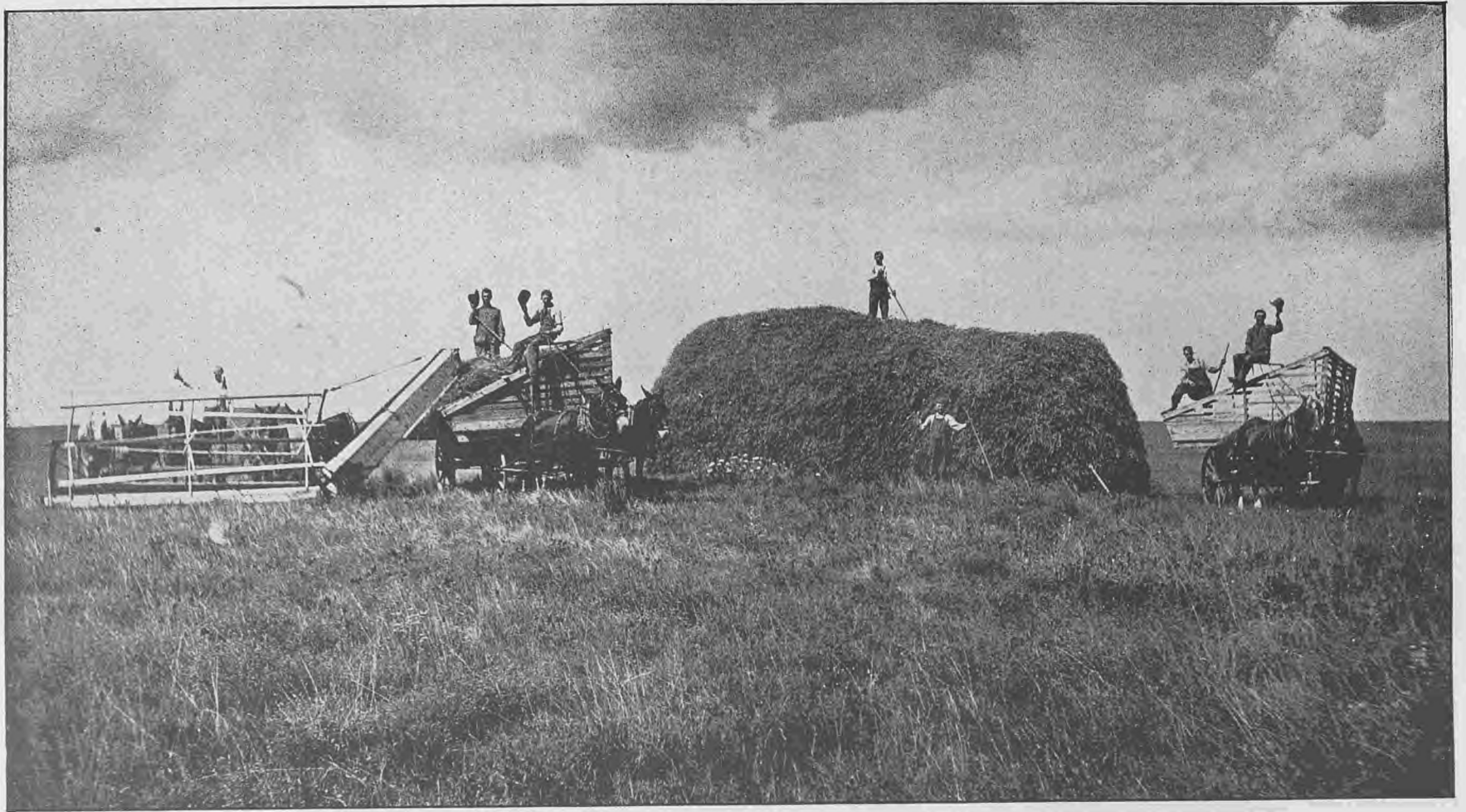
BUENA VISTA HEIGHTS.

Buena Vista Heights Addition to the City of Pratt has won admiration from every person who has visited this beautiful property since the improvements were completed, and it was placed upon the market. A more desirable place for residence sites would be hard to find. The owner, Mr. M. M. Fulkerson, of Alva, Oklahoma, was quick to see the natural fitness of Buena Vista Heights as the future ideal residence section of Pratt, and this led to his purchase of the property, and the expending by him, of many thousands of dollars in improvements. Beginning at a point on First street, just seven short blocks from Main street, this property extends westward along First, to Ridgeway Avenue, and from First northward to Buena Vista Avenue. Substantial four foot

concrete sidewalks are laid from every part of Buena Vista Heights, to any part of the city, without a single break. Beautiful White Elm shade trees have been planted on every lot, and are growing well, and in a short time the uniform planting of these trees will give a park like appearance which is much to be desired in a residence district. All streets are graded, and kept in fine condition, so that altogether an investment in lots at Buena Vista Heights for a home site, or purely as an investment, will undoubtedly show good returns. Mr. Fred L. Finger is Secretary and Treasurer of the Buena Vista Heights Company, and A. C. Tracy is Sales Manager. The Company has offices in the Miller Block in Pratt, and will be pleased to show the property at any time.



Another Busy Day at Buena Vista Heights.
A. C. Tracy, Sales Manager.



Harvest Scene in Pratt County.



Repholtz Ranch, near Pratt, Kansas.

THE REPHOLTZ RANCH.

If there is a ranch in Pratt County that is better known to the people of Pratt than the old Repholtz Ranch, we have never heard of it. When many of Pratt's business men feel the need of a little recreation after the grind of business routine, as a rule they drive or motor out to the Repholtz Ranch, where Mary and Hank and Joe meet them with true old time hospitality, and show them where the fish bite hardest, and the ducks are thickest. This, of course, means only those who are known to them, and strangers as a rule are not welcome, as in that case they would be over-run, and the fish and ducks would not last as long as a snow ball in the sun. Many times the writer has partaken of this hospitality, and gone back to town feeling that life was worth living after all, and that this old world was not such a bad place to live in. As you stand on the back verandah of the ranch house, looking east where the rising sun has painted the horizon with a brush dipped in purest gold, you may catch an occasional glimpse of the beautiful Ninnescah

River through the stately old trees which surround the house. Like a silvery ribbon this picturesque stream winds its way through the hundreds of acres of verdant pasture which is a part of the Repholtz Ranch. Many cattle are seen grazing here, and many horses and mules are scattered over the broad acres, reminding one of the old pioneer days, when all freight for Pratt and other towns west, passed over the road between the Ranch House and barns. Go down to the banks of the murmuring river and cast in your hook. Let it float with the current and follow the float as it merrily sails along, and before you can realize what has happened there is a sudden swirl of the water, the float has vanished, and with an instinctive yank of the bamboo pole you have landed a noble bass, or a clipper built channel cat, the sight of which makes your every nerve tingle, and the rich red blood of the sportsman riot madly in your veins. The Repholtz family came from Indiana some twenty odd years ago, and settled on the land which now constitutes their Home Ranch. Gradually the family have dwindled, until now all that are left at the old Home, are Mary and Hank and Joe. May they be there when age has whitened their heads and enfeebled their frame, happy and contented to the very end, is the wish of all who have experienced their hospitality.

COATS, KANSAS.

The town of Coats, Kansas, while not one of the biggest in the world, is one of the biggest in Pratt County, and is one of the best on Earth. It has many thriving business concerns, among which the following may be enumerated: Three general merchandise stores, three grain elevators, one drug store, two livery barns, two hotels, one graded school, one state bank, three hardware stores, two lumber yards, two auto garages, four blacksmith shops, one cement block plant, one barber shop, one meat market, two real estate offices, one millinery store, and one jewelry store. This fine little town is situated on the Englewood Branch of the Santa Fe System, just 100 miles west of Wichita, and is the trading point for a large area of very rich agricultural country. The people are enterprising and up-to-date, and always are glad to welcome visitors from the outside, and always strive to make them feel at home. There is a live little paper published there weekly by R. A. Clemons. It is called "The Coats Courant" and is a sure enough live sheet. Do not forget that Coats is on the map every day of the year rain or shine.

COATS STATE BANK.

This staunch little bank was established in 1902, and has a Capital of \$25,000. The officers are: C. Q. Chandler, President; J. M. Hellings, Jr., Cashier; A. Bissantz, Asst. Cashier; and J. M. Hellings, Secretary. The Directors are: J. M. Hellings, Jr., Coats; H. W. Hellings, Coats; C. Q. Chandler, Wichita; J. W. Berryman, Ashland; J. S. Runyan, Medicine Lodge. These officers and directors are all well known and successful business men, and any bank with such men at the helm, should make a safe and conservative banking institution. The Coats State Bank has prospered from the first. The management has always been very conservative, doing a perfectly safe banking business, along safe lines; therefore this is one of the popular banks of Pratt County.



D. A. McADOO.

D. A. McAdoo's Hardware Store, Coats, Kansas.

Here is a gentleman who has been in Coats for some years, engaged in the Hardware business with such success that he has accumulated considerable property, and he deserves all he has and more. Nobody ever enters his store who does not receive the most courteous and kindly treatment. Mr. McAdoo has built up a large cir-

cle of friends, every one of whom can recall some little act of kindly feeling, that was not so great in itself, but which tended to show that his heart was in the right place. Mr. McAdoo carries a full and complete stock of all kinds of hardware and implements, and everything usually carried by a store of this kind, will be found in his stock.



Showing both Buildings of Coe & Co., Coats, Kansas.

Mr. Edward Coe, of the above firm, was born in Dwight, Ills., and lived in Harper County, Kansas, since he was four years of age. In 1905 he came to Coats and became associated with his father and brother, Arthur E. Coe and Frank L. Coe, respectively, who with Edward Coe, now compose the firm of Coe & Company. This firm

has a very large establishment. Besides doing a general merchandise business, they carry a line of household furniture in a separate store room, and also are engaged in the undertaking business. They have one of the finest hearses in this part of Kansas. They do an extensive general merchandise and furniture business and have the good will of every one in the community.

COE & COMPANY.



DOIG & HAWKINS.



Doig & Hawkins' General Store, Coats, Kansas.

The firm of Doig & Hawkins is composed of Mr. J. G. Doig, and Mr. L. Hawkins. They do a general merchandise business in Coats and are both enterprising and energetic. Their business is considered a credit to the town, and both of

the gentlemen have many warm friends who appreciate their sterling honesty and square business methods. They carry a large and varied stock, and have built up a nice trade.



Coats Hotel, Coats, Kansas.

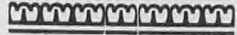
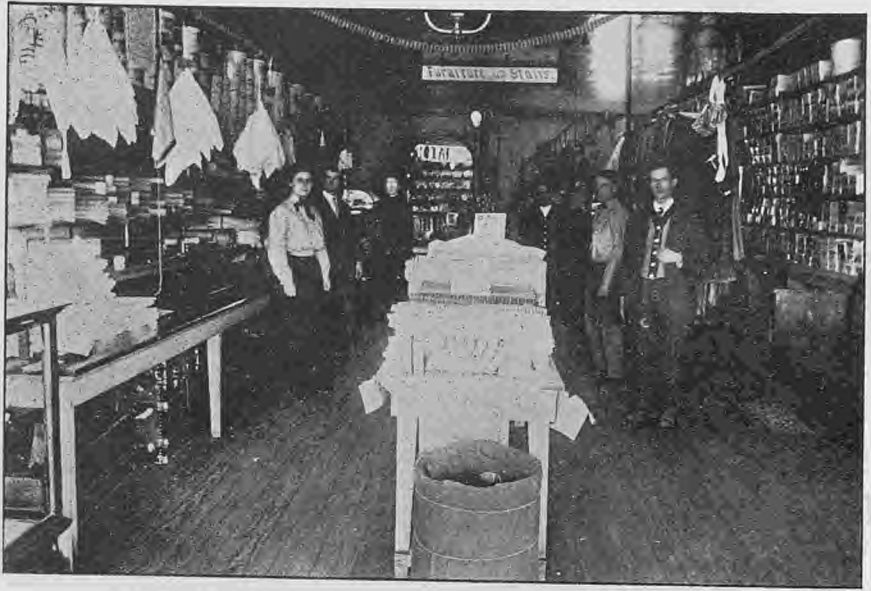
Mr. Frazier settled in Barbee County, Kansas, about twelve years ago, and engaged in farming. He later engaged in the threshing machine business, and was well known all through that section of the state. About two years ago he moved to Coats, in Pratt County, and purchased the Coats House, which is the leading Commercial Hotel of the town. He remodeled the house, re-furnished it in good shape, and started out to

build up a good trade. That he has succeeded is easily seen by any one who stops there. And the reason is not far to seek. Many a traveling man has driven across country to Coats and arrived at the Coats House tired, cold and hungry. There he always found a good old fashioned home cooked meal waiting for his attention. And he never left the table without feeling better. These men spread the glad tidings, and today Mr. Frazier has about all the business he can attend to properly.



JOHN N. FRAZIER.





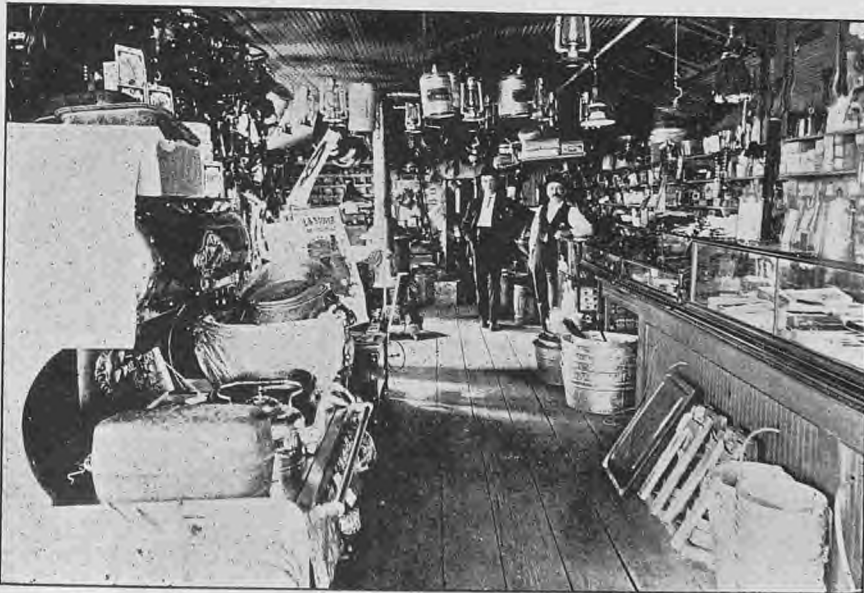
SHIGLER &
SNYDER.



General Store of Shigler & Snyder, Coats, Kansas.

The members of this enterprising firm, who do a general merchandise business at Coats, are G. G. Shigler and C. B. Snyder. Mr. Shigler has another large store at Lake City, Barber County, where he lives, and also has an interest in several other stores. Mr. C. B. Snyder is only inter-

ested in the store at Coats. He is an up-to-date young business man, has many friends and is well liked by all who have occasion to do business with him. He was born in West Virginia and came to Pratt County in 1892.



T. W. PORTER.



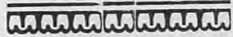
Hardware Store of T. W. Porter, Pratt, Kansas.

Mr. Porter conducts a hardware business in Coats, Kansas, where he has been located for many years, and expects to be located for as many more. He is a gentleman of courteous manners, and has a host of friends who all stand behind his

reputation for straightforward dealing and strict integrity in business. He carries a full line of hardware of all kinds, and also everything that is usually handled by a store of this kind.



I. N. SHRIVER.



I. N. Shriver's Residence, Coats, Kansas.

Mr. Shriver is an old timer in Pratt County, having farmed for a great many years, until he finally settled in Coats, where he has built an elevator that is a marvel of ingenuity, and is said to be the most up-to-date grain elevator in Western Kansas. It has all of the latest improvements and conveniences which are designed to reduce labor

and expedite the handling of grain. Mr. Shriver has built a magnificent residence just east of Coats, and is a gentleman of the strictest honesty, which has made him many friends. He is very highly regarded in Coats as a good citizen and a progressive business man.



Elevator of I. N. Shriver, Coats, Kansas.

J. F. BRINKLEY.



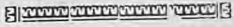
J. F. Brinkley's Jewelry Store, Coats, Kansas.

Mr. Brinkley originally came from Gallatin County, Illinois. He settled at Haviland, in Kiowa County, when he first came to Kansas, where he was engaged in the business of a Jeweler and Optician. He remained at Haviland five years and then removed to Coats, in Pratt County, in

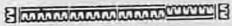
1909. He carries a large and complete line of Watches, Clocks, Jewelry, Post Cards, fancy and plain China, Glassware and Picture Frames. Mr. Brinkley is a young man of sterling honesty and integrity and has made many friends in Coats.

SAWYER.

Sawyer is another of the towns in Pratt County which does a large volume of business and which is growing and hustling for trade all the time. There are a number of enterprising business houses located here, and a live up-to-date little newspaper called The Sawyer News, which is edited and owned by F. C. Trillingham, a man who knows the newspaper business and who is a live wire when it comes to writing editorials. Several pictures of places in Sawyer accompany this sketch. This town is on the Englewood Branch of the Santa Fe System, and has a very good little Hotel, where some of the Santa Fe trains stop for meals.



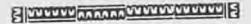
H. A. BONNELL.



Hardware Store of H. A. Bonnell, Sawyer, Kansas.

There is a fine little hardware store in Sawyer, Kansas, which is owned and conducted by the subject of this sketch, Mr. H. A. Bonnell, who has spent a number of years in Sawyer, and has made many friends during that period. When in need of anything in the hardware line call at his store,

and you will find everything in the hardware and harness line, and all are sold at most reasonable prices. Mr. Bonnell was not born in Pratt County, but as he says, it is not his fault. However, he is an old timer and is a citizen of the right kind.



W. E. CLARK.



Two of the W. E. Clark Elevators, Sawyer, Kansas.

Mr. W. E. Clark was born in Mt. Pleasant, Iowa, and came to Sawyer in 1887, and has since been engaged in the Grain and Banking business. He is now Vice President of the Sawyer State Bank. In conjunction with the estate of his brother, the late A. R. Clark, Mr. Clark owns seven large and modern grain elevators. The officers and direc-

tors of the Sawyer State Bank with which Mr. Clark is connected, are as follows: T. C. Carver, President; W. E. Clark, Vice President; and C. A. Shrader, Cashier. Directors: T. C. Carver, W. E. Clark, J. R. Wheatley, M. B. Fairchild and W. E. Combs. The bank was chartered Nov. 14th, 1904, with a capital of \$10,000, and now has a surplus of \$4,000.

W. L. TERWILLE-
GAR.



Nota Bene Hotel, Sawyer, Kansas.

Mr. Terwillegar came to Pratt County in 1904, and for some time was engaged in the Real Estate business. Finally he went into the Hotel business, and at the present time is the owner of the Nota Bene Hotel at Sawyer, Kansas. Any one who has ever eaten a meal there is always glad to go back and partake of some more of the

same hospitality. Sawyer is on the Englewood Branch of the Santa Fe, and Train No. 517 always stops there for dinner at the Nota Bene Hotel. The business is a paying one, and is for sale as Mr. Terwillegar has other business. It is a good chance for some hotel man to buy a bargain. A letter addressed to Mr. Terwillegar at Sawyer will receive a prompt reply.

IUKA.

When you speak of Iuka, Kansas, to any one in Pratt County, they are very likely to say at once "they ship a lot of grain from Iuka." This is true, as hundreds of thousands of bushels of wheat are shipped from there annually. It is also the trading point for a large area of fertile country. It has a number of live and prosperous business firms, whose business places are reproduced in this book. In former years Iuka was the County Seat of Pratt County. There are three grain elevators located in Iuka, and Taylor's Department Store is located here. This is the oldest General Store in Pratt County, which has been in business continually

S. W. TAYLOR.



S. W. Taylor's Department Store, Iuka, Kansas.

Mr. S. W. Taylor, the owner of Taylor's Department Store at Iuka, Kansas, settled in Iuka in 1878, and started his present store in 1879. He became Postmaster in that year and held that office for twenty years. He handles a full line of General Merchandise, and there are four commodious store rooms in his establishment, each of which is devoted to a special department. This is the oldest store which has been continuously in business in Pratt County. Times have changed very much since Mr. Taylor came to Pratt County. He has seen all the ups and downs of this section of Kansas, has seen the fierce county seat fights and the famine years when the crops failed, and

it seemed as though the settlers could not possibly eke out an existence. Many were the men who became discouraged, and either sold their land for a song, or failing that, just quit the country, firmly convinced that they were doing the wisest thing they had ever done in all their lives. But through it all, with true pioneer spirit, Mr. Taylor stayed and stuck until the tide turned and Pratt County began to prosper once more, as she has since continued to prosper, until today she stands as one of the most prosperous counties in all this broad land. We owe much to men of Mr. Taylor's class, who did the real pioneering, and blazed a way for others to follow.

MAYNARD &
PHILLIPS.

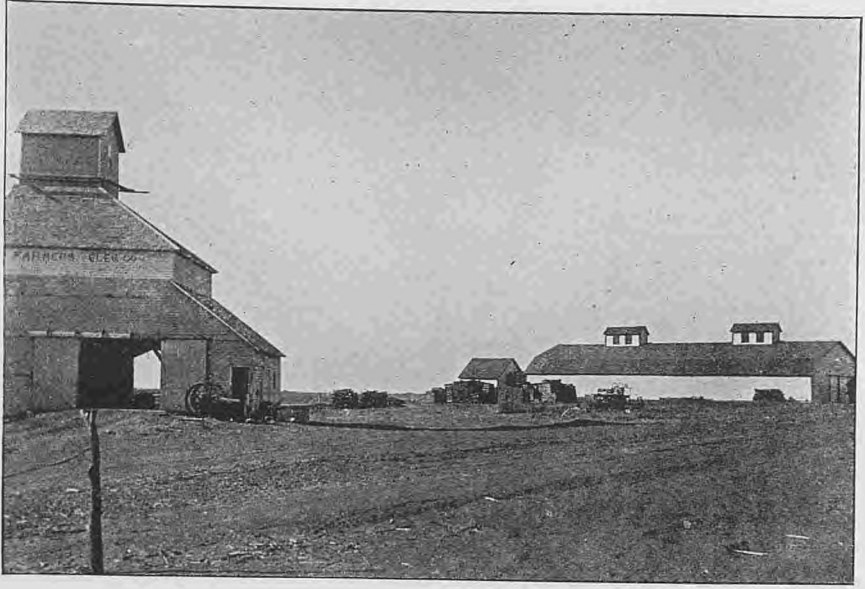


Maynard & Phillips' Hardware Store, Iuka, Kansas.

Here is a firm of Hardware dealers who have a host of friends and just as many customers. C. A. Maynard and C. H. Phillips is the way they sign checks, and they never hang back when there is one to sign in settlement of an account. They succeeded the firm of Maynard & Tregellas, which was established in 1902. They carry a full and complete line of hardware, harness, whips, etc., and are clean cut, representative young business men, who by careful attention to their business, and strict honesty, have built up a

nice trade. Mr. Maynard was born in Illinois, and came to Pratt County in 1892, and Mr. Phillips was born in the "Show me" State of Missouri, and came to Pratt County to see for himself in 1879, so he was not very old when he arrived.

CLARK BROTHERS



Clark Bros.' Elevator and Lumber Shed, Iuka, Kansas.

The two young men comprising this firm are C. M. Clark and W. R. Clark. They are sons of the late William B. Clark, who was one of the pioneers of Kansas, having settled in Linn County in 1857 when it was indeed a border County. These young men were born there, and came to Carmi Township, Pratt County, in 1890. They followed farming for about nine years, and twelve years ago started their present grain, lumber and coal business, in which they have been very successful. Up to the present time they have shipped from Iuka from the 1910 crop 216 cars, averaging 1200 bushels of wheat to the car, which is close to 260,000 bushels. This is about one

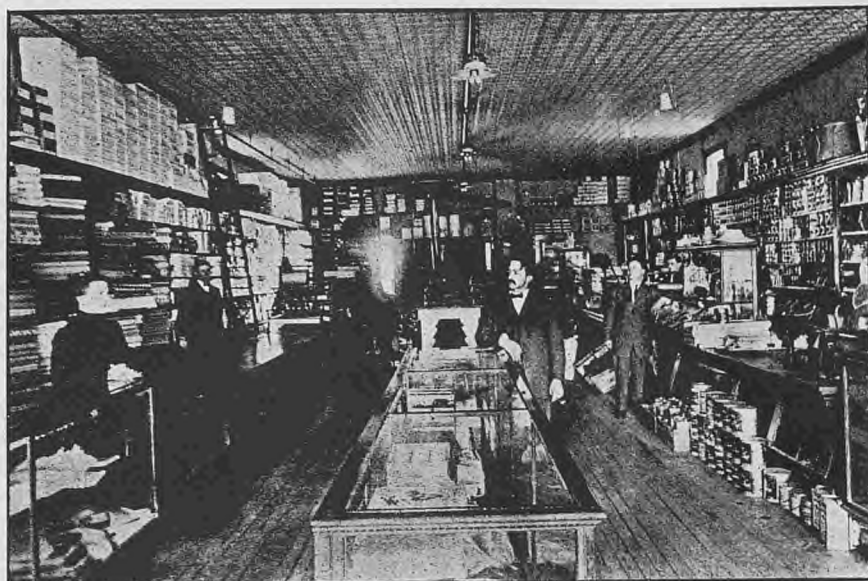
half of the shipment from Iuka, as two other elevators combined shipped about the same amount. The lumber shed of Clark Bros., as the accompanying picture will show, is one of the finest in Kansas. These young men have worked hard, and by their square dealing and strict integrity, have attained success in their business.

CULLISON.

There is another little town on the Rock Island Railroad just a few miles west of Pratt which is very much alive. I refer to Cullison, which is an up-to-date town for its size, and which has a number of business firms who all do a large business. Although it is not a very large place, it is an important trading point and a great deal of grain and lumber is handled there. In this book will be found pictures of the principal business houses.



THE FARMERS'
ELEVATOR
COMPANY.



Farmers' Elevator Co. Co-Operative Store, Cullison, Kansas.

The Farmers' Elevator Company of Cullison, Kansas is a Co-operative Company and was chartered in 1903 with a paid up capital of \$3600.00. This represents the entire investment of the stockholders but so successful has been its career that its present valuation over all liabilities is over Twenty-nine Thousand (\$29,000.00) dollars.

This company has the best equipped Elevator west of Hutchinson on the Rock Island Railway; large coal sheds, a lumber yard and a large general store carrying over twelve thousand dollar stock. If you want to get pointers on Co-operation come to Cullison.



Elevator and Lumber Shed of Farmers' Elevator Co., Cullison, Kansas.

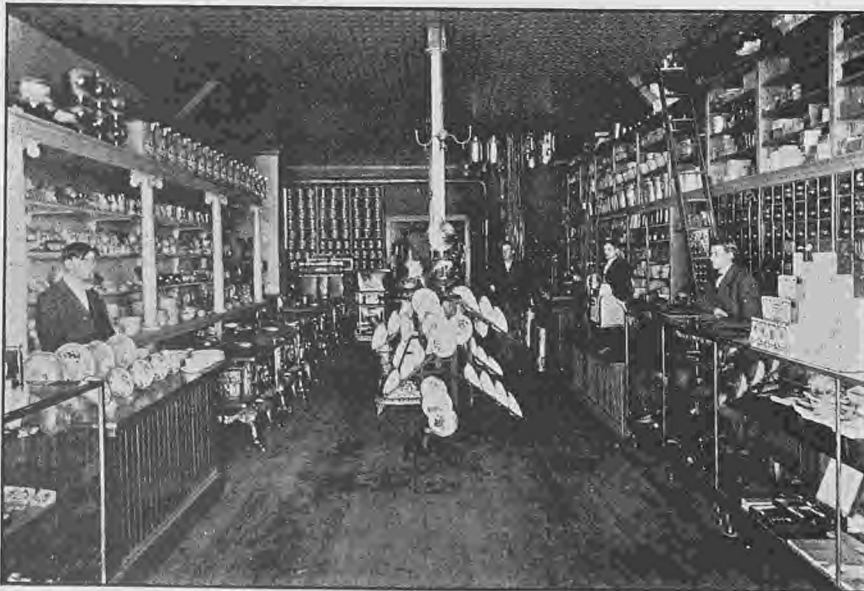
CULLISON
MERCANTILE CO.



Cullison Mercantile Co., Cullison, Kansas.

This enterprising firm is successor to Hughes & Co., general merchandise store at Cullison, Kansas. Charles Dellinger, the Manager, was formerly with the Jett Mercantile Company at Pratt. This young man is a good type of the keen, alert and clean cut young business man. He is well qualified to manage such a business as the one he controls. He has had years of experience in similar lines, and his experience, in conjunction with his natural ability insure a prosperous ca-

reer for the Corporation which he is superintending. Mr. A. R. Stonestreet who is associated with Mr. Dellinger, has lived in Cullison for twenty-four years, and was formerly in the elevator business. This firm carries an extensive and varied stock of general merchandise, including groceries, dry goods, clothing, shoes, hats and caps, and also a fine line of furniture, carpets, rugs and house furnishing goods of every description. Their line is full and complete, and always up-to-date.



G. I. Toews' Hardware Store, Cullison, Kansas.

Mr. Toews was born in Germany and came to Pratt County in 1904, and engaged in the hardware and implement buisness at Cullison. He is still a young man and it is greatly to his credit that he has already accomplished so much. He

has accumulated a nice property, has built up a thriving business, and is a leading citizen of his town. He carries a large and complete stock of goods, and his business is growing in volume as each year passes.

G. E. MARTIN, M. D.



Dr. Martin's Drug Store, Cullison, Kansas, Dr. Martin Standing on the Right.

Doctor Martin has been in Pratt County for about three years and already has built up a fine practice. He settled in Cullison, where he has a nice little drug store and carries a full line of drugs, toilet articles, ect. At Cedarville, Kansas, Doctor Martin first saw the light of day. He took the full medical course at Creighton Medical

College, at Omaha, Nebraska, and came out with the Class of '06. He does a general drug business and was registered three years ago by the State Board of Examiners in Pharmacy. He is the only physician in Cullison, and is well liked by all who know him.

PRESTON.

Preston, Pratt County, Kansas, is not as big as Chicago, but in her own way she is just as good a town. She has many fine business houses, grain elevators and lumber yards, and a good solid State Bank. The merchants are live and pushing business men, and taken altogether this town will compare favorably with any town of her size in Kansas. Preston is located on the Rock Island Road, and also on the Missouri Pacific. She has good railroad facilities, and there is no reason on earth why she should not continue to grow in the future as she has been doing in the past.

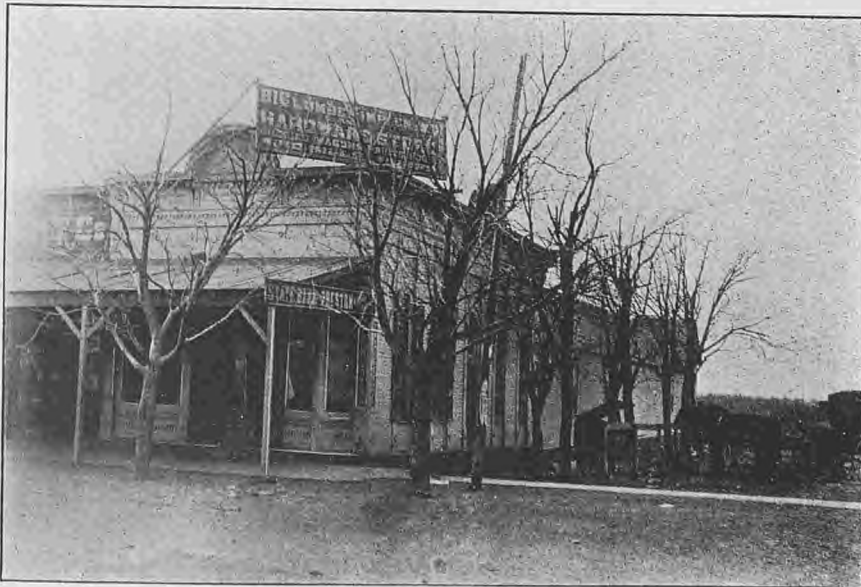
MR. M. H. HAYS.



M. H. Hays' General Store, Preston, Kansas.

Mr. Hays came to Pratt County in 1902, and located a general merchandise business in Preston, where he resides at the present time. By his genial personality and square dealing he has built up a large business and has formed many

strong friendships. He has a fine storeroom which is always well stocked and everything usually carried by a general merchant will be found at Mr. Hays' store.

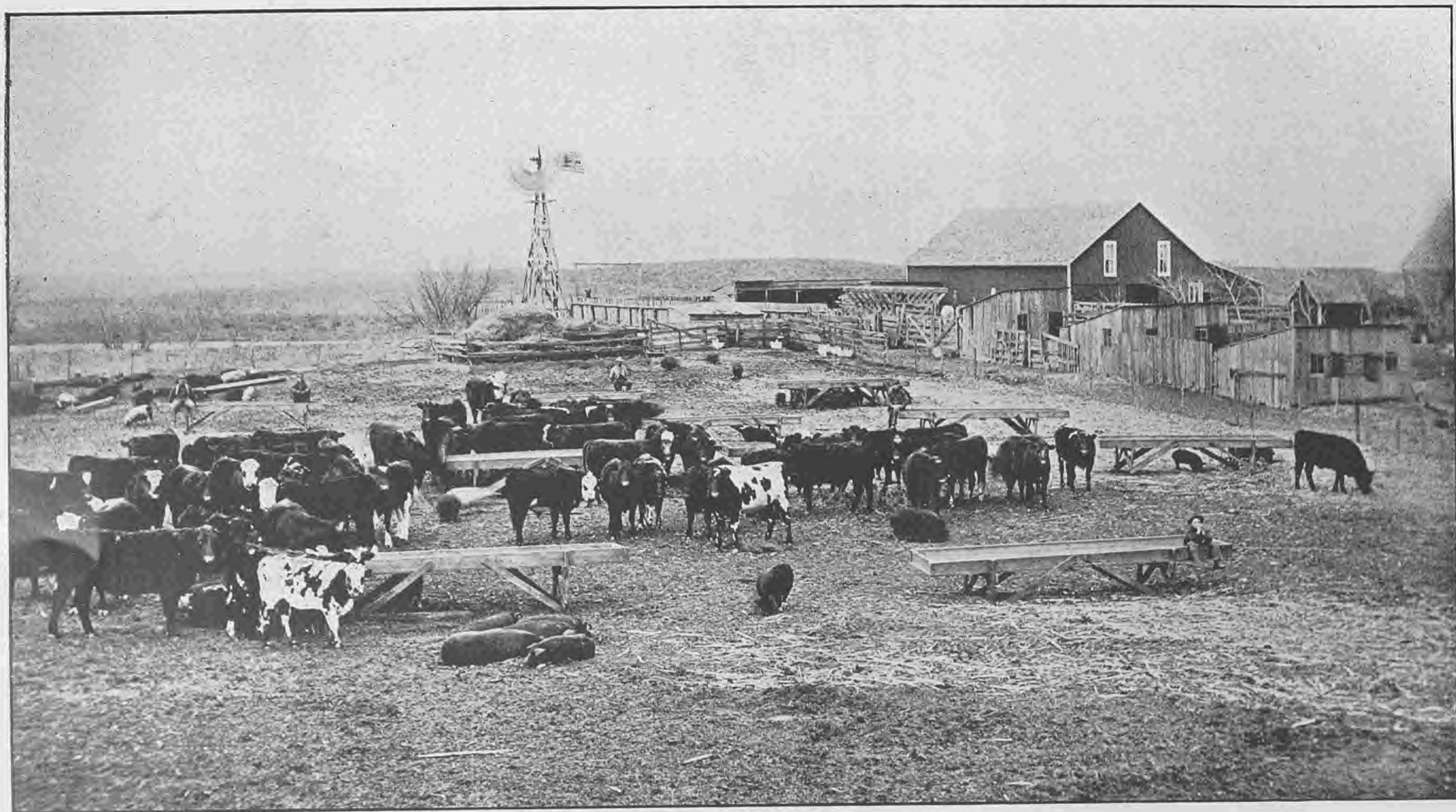


STATE BANK
OF PRESTON.

State Bank of Preston, Preston, Kansas.

The State Bank of Preston was chartered on January 14th, 1892, with a Capital of Fifteen Thousand dollars. The officers are: M. H. Hays, President; H. J. Moeller, Vice President; R. B. Haines, Cashier; and L. W. Hays, Asst. Cashier.

The directors are: M. H. Hays, R. B. Haines, H. J. Moeller, J. W. Pedigo and William Ward. This bank is now doing a prosperous business which is increasing all the time.



Part of Boyd Swonger's Herd on the A. F. Jones Ranch, Pratt County, Kansas.