

PORTRAIT DEPARTMENT

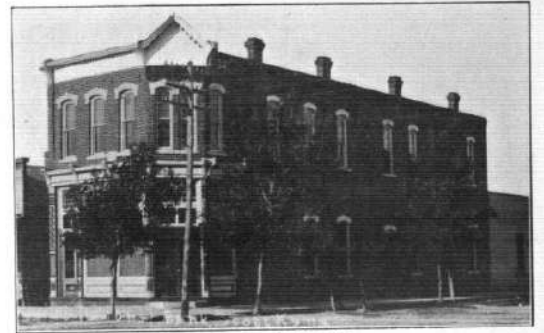
SECTION 2



CHRISTIAN CHURCH,
Scott City, Kansas



PUBLIC SCHOOL BUILDING,
Scott City, Kansas



FIRST NATIONAL BANK,
Scott City, Kansas



E. H. EPPERSON,
Scott City, Kansas



J. W. FRENCH, WIFE & DAUGHTER



J. N. LINDELOW,
Cooley, Okla.



WALTER McCULLY,
Scott City, Kansas



C. E. McMILLAN,
Beaver Valley Farm,
Scott City, Kansas.



FARM RES. OF R. H. CHADTREE,
Scott City, Kansas



RANCH SCENE ON CITY VIEW STOCK FARM,
Owned by Mrs. A. McInturf,
Scott City, Kansas



RESIDENCE OF C. W. DICKHUT,
Scott City, Kansas



SOUTH SIDE SCHOOL BUILDING,
Scott City, Kansas



C. W. DICKHUT'S RESIDENCE AND
STOCK CORRAL



RESIDENCE OF J. W. PARTINGTON,
Scott City, Kansas



C. W. DICKHUT AND WIFE,
Scott City, Kansas



THE GRAND CENTRAL HOTEL,
Scott City, Kansas,
Mrs. L. E. Huey



C. L. DAVIS
Davis Brothers, Ranchers, Stock Growers, Wheat Growers. They do their farming with a Gasoline Engine.



MRS. C. L. DAVIS



A. F. DAVIS



RESIDENCE OF A. J. QUANCE,
Scott City.



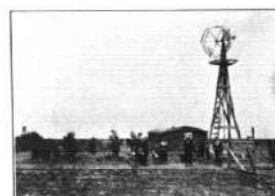
H. D. WINTER,
Scott City.



RESIDENCE OF MRS. WINTER
Mother of H. D. Winter,
Scott City.



CENTRE HILL FARM,
Owned by J. L. States,
Manning, Kansas



ORCHARD OF W. H. HAWKINS,
Scott City.



RESIDENCE OF W. H. HAWKINS,
Scott City.