

MAP OF
TOWNSHIP 6 S RANGE 37 W
Scale 1/4 inch = 1 mile

OF THE 6TH P. M.

CHEYENNE				CO. & RAWLINS				CO.						
64.00 Charles B. 287.73	62.04 George B. 448.41	60.04 Joe 282.34	57.51 I. Cooper 429.51	57.07 C. E. 430.51	57.07 L. Hoover 287.07	57.07 Stewart 429.07	57.07 Butler 429.07	57.07 John W. 287.07	57.07 Johnson 287.07	57.07 F. E. 287.07	57.07 Komer 287.07	57.07 Upton 287.07	57.07 Lewis 287.07	57.07 James C. 287.07
59.00 James E. Hays 279.27	57.04 David 287.04	55.04 N. E. 287.04	52.51 George 282.51	52.07 J. K. 282.07	52.07 L. Hoover 282.07	52.07 Stewart 282.07	52.07 Butler 282.07	52.07 John W. 282.07	52.07 Johnson 282.07	52.07 F. E. 282.07	52.07 Komer 282.07	52.07 Upton 282.07	52.07 Lewis 282.07	52.07 James C. 282.07
54.00 James E. Hays 279.27	52.04 David 287.04	50.04 N. E. 287.04	47.51 George 282.51	47.07 J. K. 282.07	47.07 L. Hoover 282.07	47.07 Stewart 282.07	47.07 Butler 282.07	47.07 John W. 282.07	47.07 Johnson 282.07	47.07 F. E. 282.07	47.07 Komer 282.07	47.07 Upton 282.07	47.07 Lewis 282.07	47.07 James C. 282.07
49.00 James E. Hays 279.27	47.04 David 287.04	45.04 N. E. 287.04	42.51 George 282.51	42.07 J. K. 282.07	42.07 L. Hoover 282.07	42.07 Stewart 282.07	42.07 Butler 282.07	42.07 John W. 282.07	42.07 Johnson 282.07	42.07 F. E. 282.07	42.07 Komer 282.07	42.07 Upton 282.07	42.07 Lewis 282.07	42.07 James C. 282.07
44.00 James E. Hays 279.27	42.04 David 287.04	40.04 N. E. 287.04	37.51 George 282.51	37.07 J. K. 282.07	37.07 L. Hoover 282.07	37.07 Stewart 282.07	37.07 Butler 282.07	37.07 John W. 282.07	37.07 Johnson 282.07	37.07 F. E. 282.07	37.07 Komer 282.07	37.07 Upton 282.07	37.07 Lewis 282.07	37.07 James C. 282.07
39.00 James E. Hays 279.27	37.04 David 287.04	35.04 N. E. 287.04	32.51 George 282.51	32.07 J. K. 282.07	32.07 L. Hoover 282.07	32.07 Stewart 282.07	32.07 Butler 282.07	32.07 John W. 282.07	32.07 Johnson 282.07	32.07 F. E. 282.07	32.07 Komer 282.07	32.07 Upton 282.07	32.07 Lewis 282.07	32.07 James C. 282.07
34.00 James E. Hays 279.27	32.04 David 287.04	30.04 N. E. 287.04	27.51 George 282.51	27.07 J. K. 282.07	27.07 L. Hoover 282.07	27.07 Stewart 282.07	27.07 Butler 282.07	27.07 John W. 282.07	27.07 Johnson 282.07	27.07 F. E. 282.07	27.07 Komer 282.07	27.07 Upton 282.07	27.07 Lewis 282.07	27.07 James C. 282.07
29.00 James E. Hays 279.27	27.04 David 287.04	25.04 N. E. 287.04	22.51 George 282.51	22.07 J. K. 282.07	22.07 L. Hoover 282.07	22.07 Stewart 282.07	22.07 Butler 282.07	22.07 John W. 282.07	22.07 Johnson 282.07	22.07 F. E. 282.07	22.07 Komer 282.07	22.07 Upton 282.07	22.07 Lewis 282.07	22.07 James C. 282.07
24.00 James E. Hays 279.27	22.04 David 287.04	20.04 N. E. 287.04	17.51 George 282.51	17.07 J. K. 282.07	17.07 L. Hoover 282.07	17.07 Stewart 282.07	17.07 Butler 282.07	17.07 John W. 282.07	17.07 Johnson 282.07	17.07 F. E. 282.07	17.07 Komer 282.07	17.07 Upton 282.07	17.07 Lewis 282.07	17.07 James C. 282.07
19.00 James E. Hays 279.27	17.04 David 287.04	15.04 N. E. 287.04	12.51 George 282.51	12.07 J. K. 282.07	12.07 L. Hoover 282.07	12.07 Stewart 282.07	12.07 Butler 282.07	12.07 John W. 282.07	12.07 Johnson 282.07	12.07 F. E. 282.07	12.07 Komer 282.07	12.07 Upton 282.07	12.07 Lewis 282.07	12.07 James C. 282.07
14.00 James E. Hays 279.27	12.04 David 287.04	10.04 N. E. 287.04	7.51 George 282.51	7.07 J. K. 282.07	7.07 L. Hoover 282.07	7.07 Stewart 282.07	7.07 Butler 282.07	7.07 John W. 282.07	7.07 Johnson 282.07	7.07 F. E. 282.07	7.07 Komer 282.07	7.07 Upton 282.07	7.07 Lewis 282.07	7.07 James C. 282.07
9.00 James E. Hays 279.27	7.04 David 287.04	5.04 N. E. 287.04	2.51 George 282.51	2.07 J. K. 282.07	2.07 L. Hoover 282.07	2.07 Stewart 282.07	2.07 Butler 282.07	2.07 John W. 282.07	2.07 Johnson 282.07	2.07 F. E. 282.07	2.07 Komer 282.07	2.07 Upton 282.07	2.07 Lewis 282.07	2.07 James C. 282.07
4.00 James E. Hays 279.27	2.04 David 287.04	0.04 N. E. 287.04												

GRACE BO.

NORTHFIELD P.O.

B.O.B.

THOMAS

MAP OF
TOWNSHIP 6 S RANGE 38 W
 Scale 1/4 inch to 1 Mile.

OF THE 6TH P. M.

CHEYENNE												CO.		
58-10 Lardner 20118	57-02 Hewitt 20118	56-54 Kierren 15424	56-46 Wood 15424	56-38 Eunholt 12671	56-30 Leonora 12671	56-22 Caprice 12671	56-14 L 12671	56-06 Mayhew 12671	55-98 Ely 12671	55-90 Batchelor 12671	55-82 Hewitt 12671	55-74 Livingood 12671	55-66 L.C.	55-58 L.C.
54-50 Margaret L.S. Dudley 12671	54-42 Albert Lew 12671	54-34 John T. Knight 12671	54-26 W. Parison 12671	54-18 J.B. Smith 12671	54-10 Smith Bros. L. & T. Co. 12671	54-02 Lardner Hewitt 12671	53-94 C.C. Brown 12671	53-86 Chas. T. Kellen 12671	53-78 Chas. T. Kellen 12671	53-70 Chas. T. Kellen 12671	53-62 Chas. T. Kellen 12671	53-54 Chas. T. Kellen 12671	53-46 Chas. T. Kellen 12671	53-38 Chas. T. Kellen 12671
52-50 Margaret M. Sharrow 12671	52-42 L.C. Livingood 12671	52-34 Robert Farmer 12671	52-26 John T. Knight 12671	52-18 J.B. Smith 12671	52-10 B.W. Paterson 12671	52-02 Mary Waber 12671	51-94 Tosney Shaw 12671	51-86 L.C. Livingood 12671	51-78 L.C. Livingood 12671	51-70 L.C. Livingood 12671	51-62 L.C. Livingood 12671	51-54 L.C. Livingood 12671	51-46 L.C. Livingood 12671	51-38 L.C. Livingood 12671
50-50 Margaret M. Sharrow 12671	50-42 A. B. Brown Wm. Hoffman T. Henry T. Henry 12671	50-34 George W. Sharrow 12671	50-26 John T. Knight 12671	50-18 John T. Knight 12671	50-10 John T. Knight 12671	50-02 Andrew Hawood 12671	49-94 U.S. 40 12671	49-86 U.S. 40 12671	49-78 U.S. 40 12671	49-70 U.S. 40 12671	49-62 U.S. 40 12671	49-54 U.S. 40 12671	49-46 U.S. 40 12671	49-38 U.S. 40 12671
47-50 Charles Sharrow 12671	47-42 Sarah Sand Molstrom 12671	47-34 Sarah Sand Molstrom 12671	47-26 Pauline Kuhnt 12671	47-18 John T. Knight 12671	47-10 John T. Knight 12671	47-02 Andrew Hawood 12671	46-94 U.S. 40 12671	46-86 U.S. 40 12671	46-78 U.S. 40 12671	46-70 U.S. 40 12671	46-62 U.S. 40 12671	46-54 U.S. 40 12671	46-46 U.S. 40 12671	46-38 U.S. 40 12671
44-50 Charles Sharrow 12671	44-42 Andrew Hawood 12671	44-34 Andrew Hawood 12671	44-26 John T. Knight 12671	44-18 John T. Knight 12671	44-10 John T. Knight 12671	44-02 Andrew Hawood 12671	43-94 U.S. 40 12671	43-86 U.S. 40 12671	43-78 U.S. 40 12671	43-70 U.S. 40 12671	43-62 U.S. 40 12671	43-54 U.S. 40 12671	43-46 U.S. 40 12671	43-38 U.S. 40 12671
41-50 Charles Sharrow 12671	41-42 Andrew Hawood 12671	41-34 Andrew Hawood 12671	41-26 John T. Knight 12671	41-18 John T. Knight 12671	41-10 John T. Knight 12671	41-02 Andrew Hawood 12671	40-94 U.S. 40 12671	40-86 U.S. 40 12671	40-78 U.S. 40 12671	40-70 U.S. 40 12671	40-62 U.S. 40 12671	40-54 U.S. 40 12671	40-46 U.S. 40 12671	40-38 U.S. 40 12671
38-50 Charles Sharrow 12671	38-42 Andrew Hawood 12671	38-34 Andrew Hawood 12671	38-26 John T. Knight 12671	38-18 John T. Knight 12671	38-10 John T. Knight 12671	38-02 Andrew Hawood 12671	37-94 U.S. 40 12671	37-86 U.S. 40 12671	37-78 U.S. 40 12671	37-70 U.S. 40 12671	37-62 U.S. 40 12671	37-54 U.S. 40 12671	37-46 U.S. 40 12671	37-38 U.S. 40 12671
35-50 Charles Sharrow 12671	35-42 Andrew Hawood 12671	35-34 Andrew Hawood 12671	35-26 John T. Knight 12671	35-18 John T. Knight 12671	35-10 John T. Knight 12671	35-02 Andrew Hawood 12671	34-94 U.S. 40 12671	34-86 U.S. 40 12671	34-78 U.S. 40 12671	34-70 U.S. 40 12671	34-62 U.S. 40 12671	34-54 U.S. 40 12671	34-46 U.S. 40 12671	34-38 U.S. 40 12671
32-50 Charles Sharrow 12671	32-42 Andrew Hawood 12671	32-34 Andrew Hawood 12671	32-26 John T. Knight 12671	32-18 John T. Knight 12671	32-10 John T. Knight 12671	32-02 Andrew Hawood 12671	31-94 U.S. 40 12671	31-86 U.S. 40 12671	31-78 U.S. 40 12671	31-70 U.S. 40 12671	31-62 U.S. 40 12671	31-54 U.S. 40 12671	31-46 U.S. 40 12671	31-38 U.S. 40 12671
29-50 Charles Sharrow 12671	29-42 Andrew Hawood 12671	29-34 Andrew Hawood 12671	29-26 John T. Knight 12671	29-18 John T. Knight 12671	29-10 John T. Knight 12671	29-02 Andrew Hawood 12671	28-94 U.S. 40 12671	28-86 U.S. 40 12671	28-78 U.S. 40 12671	28-70 U.S. 40 12671	28-62 U.S. 40 12671	28-54 U.S. 40 12671	28-46 U.S. 40 12671	28-38 U.S. 40 12671
26-50 Charles Sharrow 12671	26-42 Andrew Hawood 12671	26-34 Andrew Hawood 12671	26-26 John T. Knight 12671	26-18 John T. Knight 12671	26-10 John T. Knight 12671	26-02 Andrew Hawood 12671	25-94 U.S. 40 12671	25-86 U.S. 40 12671	25-78 U.S. 40 12671	25-70 U.S. 40 12671	25-62 U.S. 40 12671	25-54 U.S. 40 12671	25-46 U.S. 40 12671	25-38 U.S. 40 12671
23-50 Charles Sharrow 12671	23-42 Andrew Hawood 12671	23-34 Andrew Hawood 12671	23-26 John T. Knight 12671	23-18 John T. Knight 12671	23-10 John T. Knight 12671	23-02 Andrew Hawood 12671	22-94 U.S. 40 12671	22-86 U.S. 40 12671	22-78 U.S. 40 12671	22-70 U.S. 40 12671	22-62 U.S. 40 12671	22-54 U.S. 40 12671	22-46 U.S. 40 12671	22-38 U.S. 40 12671
20-50 Charles Sharrow 12671	20-42 Andrew Hawood 12671	20-34 Andrew Hawood 12671	20-26 John T. Knight 12671	20-18 John T. Knight 12671	20-10 John T. Knight 12671	20-02 Andrew Hawood 12671	19-94 U.S. 40 12671	19-86 U.S. 40 12671	19-78 U.S. 40 12671	19-70 U.S. 40 12671	19-62 U.S. 40 12671	19-54 U.S. 40 12671	19-46 U.S. 40 12671	19-38 U.S. 40 12671
17-50 Charles Sharrow 12671	17-42 Andrew Hawood 12671	17-34 Andrew Hawood 12671	17-26 John T. Knight 12671	17-18 John T. Knight 12671	17-10 John T. Knight 12671	17-02 Andrew Hawood 12671	16-94 U.S. 40 12671	16-86 U.S. 40 12671	16-78 U.S. 40 12671	16-70 U.S. 40 12671	16-62 U.S. 40 12671	16-54 U.S. 40 12671	16-46 U.S. 40 12671	16-38 U.S. 40 12671
14-50 Charles Sharrow 12671	14-42 Andrew Hawood 12671	14-34 Andrew Hawood 12671	14-26 John T. Knight 12671	14-18 John T. Knight 12671	14-10 John T. Knight 12671	14-02 Andrew Hawood 12671	13-94 U.S. 40 12671	13-86 U.S. 40 12671	13-78 U.S. 40 12671	13-70 U.S. 40 12671	13-62 U.S. 40 12671	13-54 U.S. 40 12671	13-46 U.S. 40 12671	13-38 U.S. 40 12671
11-50 Charles Sharrow 12671	11-42 Andrew Hawood 12671	11-34 Andrew Hawood 12671	11-26 John T. Knight 12671	11-18 John T. Knight 12671	11-10 John T. Knight 12671	11-02 Andrew Hawood 12671	10-94 U.S. 40 12671	10-86 U.S. 40 12671	10-78 U.S. 40 12671	10-70 U.S. 40 12671	10-62 U.S. 40 12671	10-54 U.S. 40 12671	10-46 U.S. 40 12671	10-38 U.S. 40 12671
8-50 Charles Sharrow 12671	8-42 Andrew Hawood 12671	8-34 Andrew Hawood 12671	8-26 John T. Knight 12671	8-18 John T. Knight 12671	8-10 John T. Knight 12671	8-02 Andrew Hawood 12671	7-94 U.S. 40 12671	7-86 U.S. 40 12671	7-78 U.S. 40 12671	7-70 U.S. 40 12671	7-62 U.S. 40 12671	7-54 U.S. 40 12671	7-46 U.S. 40 12671	7-38 U.S. 40 12671

MAP OF
TOWNSHIP 6 S RANGE 40 W
Scale 1/4 inch to 1 Mile.

OF THE 6TH P. M.

CO.

CHEYENNE											
40.00	40.07	40.14	40.21	40.28	40.35	40.42	40.49	40.56	40.63	40.70	40.77
Wm. Cotton 1871	Wm. Callow 1871	Boadach 1871	W. H. Smith 1871	Wm. Higgins 1871	Enoch R. Mather 1871	Lake 1871	Wm. Emerson 1871	George 1871	Wm. Tabbles 1871	Wm. Tabbles 1871	Calvert 1871
6	5	4	3	2	1						
Torrey Kupsett	Harvey Ingram	Fritz Rust	Jardays Howell	W. E. Lanning 1871	John Ewalt	C. M. Millsback 1871	Mary Danner 1871	D. Heaton 1871	Thomas Lenard	Wm. B. Beckman 1871	Geo. Sholley 1871
A. L. Bagley 1871	Mary Elnis 1871	Geo. Wolfram 1871	Francis M. Bennington 1871	Theodore F. Sargent 1871	Charles F. Keel 1871	John A. Keel 1871	Charles B. Murray 1871	John S. Phillips 1871			
7	8	9	10	11	12						
A. L. Bagley 1871	J. H. Keenan 1871	Charles Alison	Dr. W. S. Baker 1871	John L. Patterson 1871	D. Heaton 1871	T. W. Keel 1871	Joseph A. Beckwith 1871	William L. Beckman 1871	John S. Phillips 1871		
18	17	16	15	14	13						
George W. Edwards 1871	Walter Briggs	William E. Curry 1871	SCHOOL	Charles Ruckdashel	Joseph Keel	Charles E. Gibson 1871	F. W. Wright 1871	Gertrude Muxworthy	Linda Warr		
P. O. George W. Edwards 1871	John S. McKeever 1871	William E. Curry 1871	John Shurles	John L. Tompkins 1871	Rter Titcher	Mary Southard	C. F. Bliven 1871				
19	20	21	22	23	24						
Oran Edwards	A. Fisher 1871	W. H. May 1871	J. W. Gaylord 1871	Martha A. Jones	David H. Johnston 1871	Peter Birken- ger	Shelley Co. Diagon Bliven	Charles Ruckdashel	Cyrus Garland		
John R. Hood 1871	W. H. Tompkins 1871	Ernest Malmberg	Barnett Hild	Aphie Risher	Jacob Thomas	Charles E. Gibson	Thomas Ellay	William J. Carden 1871			
30	29	28	27	26	25						
James W. Burt 1871	Ernest Tompkins	William Malmberg	George L. Hilson	F. M. Strawnian 1871	John L. Keenan 1871	J. H. Justice 1871	J. L. Thompson 1871	H. B. Gringer 1871	Harman Gringer		
Charles Hills	Peter Nelson	B. Scott Ormsby	A. L. Calvert 1871	Harvey E. Bliven	Jacob Spittler	Fred. W. Goodrich 1871	H. B. Gringer 1871				
31	32	33	34	35	36						
Chas. E. Gibson 1871	A. M. Stewart 1871	C. W. Schum 1871	James N. Clarke	Jacob Spittler	R. A. Kent 1871	M. M. Goodrich 1871	Margaret M. Goodrich				

SCHOOL

MAP OF
TOWNSHIP 6 S RANGE 41 W
Scale 1/4 inch to 1 mile.

OF THE 6TH P. M.

CHEYENNE

CO.

38 37 41 97 W. H. Equitable 247 00 6	41 79 41 61 Charles Gibson 234 45 5	41 49 41 58 48 23 41 10 W. E. Fortmeyer 180 4	40 36 40 59 Frank McDonald 161 45 4	40 30 40 05 Walter M. Krom 180 37 3	40 26 40 18 A. W. Taylor 150 44 2	40 16 40 08 Fritz Rust 150 12 1	39 26 39 48 Fritz Rust 152 74 1	39 04 38 52 A. Scott Ormsby 158 46 1	40 26 40 21 Joseph H. Seelye 130 50 1	40 18 40 00 Torrey Everett 150 18 1	
Mary Clontract 180 7	Equitable Land Co. 150 8	Theresa A. Mims 150 9	Win. E. Fortmeyer 480 10	H. B. Linebaugh 150 11	G. B. Price 150 12	Greenberry & Claude Price 150 13	D. C. Morrison 150 14	J. E. Smith 150 15			
Arthur Kemp 150 16	Robt. A. Macaulay, Albert Kittington, Ernest C. Deardoff NEVILLE P.O. SCHOOL 150 17	John Ross 150 18	Joseph Blue 150 19	William A. Sexson 640 20	Levi A. Johnson 150 21	J. F. Sexson 150 22	R. W. Tiers 150 23				
Mary Ennis 151 08 18	John A. Keegan 150 19	Simon Kemp 150 20	James N. Brown 150 21	W. J. Price 480 22	School Land 150 23	William A. Sexson 640 24	Mary Ennis 150 25	Thos. P. Logan 150 26	W. M. McClain 150 27	Henry Winter 150 28	
Chas. Gibson 157 44 19	Lordner Howell 150 20	Thos. P. Smith & Cecil J. Baxter 150 21	James N. Brown 150 22	W. J. Price 480 23	School Land 150 24	William A. Sexson 640 25	Leonard Everett 150 26	Wm. Nash 150 27	Martin M. Ganhart 320 28		
E. R. Falkburn 157 84 20	Carmen Spaul 150 21	Mary Ennis 150 22	Herman W. Holt 150 23	A. E. Stevens 320 24	John Beneda 320 25	Theresa Mims 150 26	Charles E. Gibson 150 27	E. Ruth Yorke 150 28	C. F. Fishman 150 29		
Carman Spain 154 16 21	Oscar Anderson 150 22	James N. Gernhart 320 23	James N. Gernhart 150 24	James N. Brown 150 25	H. B. James 150 26	Henry N. Buss 150 27	M. S. Johnson 320 28	M. S. Johnson 150 29	W. H. Carnahan 150 30		
Thos. N. Brown 154 34 22	Equitable Land Co. 150 23	480 24	Israel Beetsion 150 25	Catharine M. Gernhart 150 26	Equitable Land Co. 150 27	James B. Light 320 28	Walter B. Canfield 640 29	Walter B. Canfield 640 30			
U.S. Mary S. & J. A. Smith 154 38 23	480 24	James N. Gernhart 320 25	Edward Stevens 150 26	German Natl. Bank 150 27	Silas W. Ingram 150 28	J. Lewis Howard 150 29	640 30	Henry Northcutt 150 31	480 32		
Lytia A. Snyder 157 24 24	L. A. Golden 150 25	Matilda Swofford 150 26	L. D. Fletcher 150 27	C. C. Calvert 150 28	Polly A. Harting 150 29	Peter Dowers 150 30	John E. Heston 150 31	L. A. Golden 150 32	N. O. Westre 150 33	B. F. Brown 150 34	E. B. Hedding 150 35
Wm. Begrun 152 30 25	Nancy A. Crockford 150 26	W. W. Suttis 150 27	Mary A. Thompson 150 28	A. Varney 150 29	James Wright 150 30	James E. Cushman 150 31	Wm. E. Hobbs 150 32	Ella J. Roberts 150 33	Equitable Land Co. 150 34	George Buss 150 35	Henry Buss 150 36

MAP OF
TOWNSHIP 6 S RANGE 42 W

Scale 1/4 inch to 1 Mile.

OF THE 6TH P. M.

		CHEYENNE										CO.	
COLORADO	6	37.72 38.44 39.00 39.50 40.00	39.44 39.50 40.00 40.50 41.00	39.50 40.00 40.50 41.00 41.50	40.00 40.50 41.00 41.50 42.00	40.50 41.00 41.50 42.00 42.50	41.00 41.50 42.00 42.50 43.00	41.50 42.00 42.50 43.00 43.50	42.00 42.50 43.00 43.50 44.00	42.50 43.00 43.50 44.00 44.50	43.00 43.50 44.00 44.50 45.00	43.50 44.00 44.50 45.00 45.50	44.00 44.50 45.00 45.50 46.00
	7	39.50 40.00 40.50 41.00 41.50	40.00 40.50 41.00 41.50 42.00	40.50 41.00 41.50 42.00 42.50	41.00 41.50 42.00 42.50 43.00	41.50 42.00 42.50 43.00 43.50	42.00 42.50 43.00 43.50 44.00	42.50 43.00 43.50 44.00 44.50	43.00 43.50 44.00 44.50 45.00	43.50 44.00 44.50 45.00 45.50	44.00 44.50 45.00 45.50 46.00	44.50 45.00 45.50 46.00 46.50	45.00 45.50 46.00 46.50 47.00
	18	41.50 42.00 42.50 43.00 43.50	42.00 42.50 43.00 43.50 44.00	42.50 43.00 43.50 44.00 44.50	43.00 43.50 44.00 44.50 45.00	43.50 44.00 44.50 45.00 45.50	44.00 44.50 45.00 45.50 46.00	44.50 45.00 45.50 46.00 46.50	45.00 45.50 46.00 46.50 47.00	45.50 46.00 46.50 47.00 47.50	46.00 46.50 47.00 47.50 48.00	46.50 47.00 47.50 48.00 48.50	47.00 47.50 48.00 48.50 49.00
	19	43.50 44.00 44.50 45.00 45.50	44.00 44.50 45.00 45.50 46.00	44.50 45.00 45.50 46.00 46.50	45.00 45.50 46.00 46.50 47.00	45.50 46.00 46.50 47.00 47.50	46.00 46.50 47.00 47.50 48.00	46.50 47.00 47.50 48.00 48.50	47.00 47.50 48.00 48.50 49.00	47.50 48.00 48.50 49.00 49.50	48.00 48.50 49.00 49.50 50.00	48.50 49.00 49.50 50.00 50.50	49.00 49.50 50.00 50.50 51.00
STATE OF	30	45.50 46.00 46.50 47.00 47.50	46.00 46.50 47.00 47.50 48.00	46.50 47.00 47.50 48.00 48.50	47.00 47.50 48.00 48.50 49.00	47.50 48.00 48.50 49.00 49.50	48.00 48.50 49.00 49.50 50.00	48.50 49.00 49.50 50.00 50.50	49.00 49.50 50.00 50.50 51.00	49.50 50.00 50.50 51.00 51.50	50.00 50.50 51.00 51.50 52.00	50.50 51.00 51.50 52.00 52.50	
	31	47.50 48.00 48.50 49.00 49.50	48.00 48.50 49.00 49.50 50.00	48.50 49.00 49.50 50.00 50.50	49.00 49.50 50.00 50.50 51.00	49.50 50.00 50.50 51.00 51.50	50.00 50.50 51.00 51.50 52.00	50.50 51.00 51.50 52.00 52.50	51.00 51.50 52.00 52.50 53.00	51.50 52.00 52.50 53.00 53.50	52.00 52.50 53.00 53.50 54.00	52.50 53.00 53.50 54.00 54.50	53.00 53.50 54.00 54.50 55.00

MAP OF
TOWNSHIP 7 S RANGE 37 W
 Scale 1/8 inch to 1 mile.

OF THE 6TH P. M.

34-42 34-50 34-58 34-66	34-51 34-59	34-67 34-75	34-76 34-84	34-85 34-93	34-94 34-102	34-103 34-111	34-112 34-120	34-121 34-129	34-130 34-138	34-139 34-147	34-148 34-156	34-157 34-165	34-166 34-174	34-175 34-183	34-184 34-192	34-193 34-201	34-202 34-210	34-211 34-219	34-220 34-228
11 W. Cham 158-95	6 H. Allen 158-95	5 Hamilton 158-95	4 Charles F. Rechter 158-95	3 W. F. Flawson 158-95	2 Dagster 158-95	1 Kitty Saffers 158-95													
		Mary McDaniel 159-00	Hermess S. Mackbey 159-00	John Rechter 159-00	W. F. Flawson 159-00	E. W. Albright 159-00	D. W. Dillinger 159-00	Jas. Bear 159-00	Victor C. Eddy 159-00										
A. H. Coines 161-22	T. S. McDaniel 161-22	James M. Kestland 161-22	Hance B. Freeland 161-22	Leon P. Benson 161-22	Maryal Kerr 161-22	Daniel W. Dillinger 161-22	Minna J. Dillinger 161-22	Richard E. Butler 161-22	Fred Thomas 161-22	Edith Walker 161-22									
7 James G. Gahr 159-96	L. C. Livengood 160	8 Anna Bell 160	9 James W. Gahr 160	Louis Hotal 160	10 George A. O'Neal 160	11 E. C. Dillinger 160	12 D. W. Dillinger 160	Henny M. Pottor 160	W. S. Ivins 160										
		B. W. Peterson 160	John Hamilton 160	Elmer E. Deterville 160	J. A. Ryan 160	15 F. H. Mosquid 160	14 E. C. Dillinger 160	Charley E. Mary Dodson 160	James W. Gahr 160										
18 David Robinson 160	E. C. Livengood 160	17 E. H. Herzinger 160	16 A. T. Burwell 160	C. W. Reynolds 160	15 George A. O'Neal 160	14 John M. Mann 160	13 J. H. Mann 160	Charles Dodson 160	Ora E. Dodd 160	Frank B. McMillan 160									
19 David Robinson 160	Henry E. Stephens 160	20 Edwin Miller 160	21 Edwin Miller 160	22 Timothy M. Eury 160	23 Edward Truitt 160	24 Frank Thomas 160	25 Victor C. Eddy 160	26 Henry Hinder 160	27 Frank Hester 160	28 Victor C. Eddy 160									
John G. McDaniel 160-15	Win. McDaniel 160	20 Frank Stevens 160	21 John Baits 160	22 E. W. Albright 160	23 F. C. Truitt 160	24 Victor C. Eddy 160	25 Henry Hinder 160	26 Frank Hester 160	27 Victor C. Eddy 160	28 Victor C. Eddy 160									
30 Bruce Lester 160-18	John Lester 160	29 S. H. Wheeler 160	28 Emmet Lister 160	27 John Lister 160	26 Henry Hinder 160	25 Victor C. Eddy 160	24 Henry Hinder 160	23 Frank Hester 160	22 Victor C. Eddy 160	21 Victor C. Eddy 160									
31 Domenick Weis 160	John V. Beachly 160	32 Glen Wharton 160	33 S. H. Wheeler 160	34 Charles Giesen 160	35 E. R. Andrews 160	36 Edward Masinger 160	37 James Tolly 160	38 James Tolly 160	39 Nicolass Schroeder 160	40 Eli W. Stewart 160									
		W. N. McDowell 160	H. F. Rankin 160	33 Clarence E. Rayson 160	34 J. H. Fust 160	35 Milton Kester 160	36 Thornock Busby 160	37 Mallory E. Wheeler 160	38 Catharine Jordan 160	39 Fredrich Williams 160									
		Leonard Everett 160	33 Mary S. Sawyer 160	34 Leo M. Douglass 160	35 James M. Scott 160	36 Catharine Jordan 160	37 Thornock Busby 160	38 Mallory E. Wheeler 160	39 Fredrich Williams 160	40 Mallory E. Wheeler 160									

CO.

THOMAS

MAP OF

TOWNSHIP 7 S RANGE 38 W

Sale by (several) Acts.

OF THE 6TH P. M.

46.01 45.70 40.00 40.00 39.07 39.21 39.00 39.09 39.75 39.74 39.75 39.71 39.20 39.20 39.00 39.00 38.77 38.74 38.21 38.29 40.07 40.00 40.00 40.00 40.03 40.03	40.00 40.00 39.07 39.21 39.00 39.09 39.75 39.74 39.75 39.71 39.20 39.20 39.00 39.00 38.77 38.74 38.21 38.29 40.07 40.00 40.00 40.00 40.03 40.03	39.07 39.21 39.00 39.09 39.75 39.74 39.75 39.71 39.20 39.20 39.00 39.00 38.77 38.74 38.21 38.29 40.07 40.00 40.00 40.00 40.03 40.03	39.00 39.09 39.75 39.74 39.75 39.71 39.20 39.20 39.00 39.00 38.77 38.74 38.21 38.29 40.07 40.00 40.00 40.00 40.03 40.03	39.75 39.74 39.75 39.71 39.20 39.20 39.00 39.00 38.77 38.74 38.21 38.29 40.07 40.00 40.00 40.00 40.03 40.03	39.75 39.74 39.75 39.71 39.20 39.20 39.00 39.00 38.77 38.74 38.21 38.29 40.07 40.00 40.00 40.00 40.03 40.03	38.77 38.74 38.21 38.29 40.07 40.00 40.00 40.00 40.03 40.03	38.21 38.29 40.07 40.00 40.00 40.00 40.03 40.03	38.21 38.29 40.07 40.00 40.00 40.00 40.03 40.03	40.07 40.00 40.00 40.00 40.03 40.03																				
E. Allen 162.28 6 Harry L. Everett 149.17	Smith Bros 160.00 5 J. M. Gentry 172.28	John E. Hostetter 149.44 4 G. W. Gemmill 160	W. H. Johnson 152.42 3 W. H. Johnson 152.42 G. W. Gemmill 160 W. H. Johnson 152.42	E. H. Johnson 152.42 2 J. M. Gentry 172.28 J. M. Gentry 172.28	E. H. Johnson 152.42 1 J. M. Gentry 172.28 J. M. Gentry 172.28	E. H. Johnson 152.42 1 J. M. Gentry 172.28 J. M. Gentry 172.28	E. H. Johnson 152.42 1 J. M. Gentry 172.28 J. M. Gentry 172.28	E. H. Johnson 152.42 1 J. M. Gentry 172.28 J. M. Gentry 172.28	E. H. Johnson 152.42 1 J. M. Gentry 172.28 J. M. Gentry 172.28																				
7 C. M. Johnson 160	8 S. E. Smith 160 S. K. Colton 160	9 G. W. Gemmill 160 Henry Steals 160	10 Isabella E. Hill 160 Laura Hill 160	11 E. M. David 160 C. K. Mc Cluckin 160	12 H. H. Ertle 160 George C. Thompson 160	13 J. H. Tibbels 160 J. H. Tibbels 160	14 J. D. Wagner 160 J. D. Wagner 160	15 Charles H. Taylor 160 Laura Hill 160	16 E. E. Lohar 160 Henry Menge 320	17 H. L. Johnson 160 T. B. Platt 160	18 J. C. Higgins 160 J. C. Higgins 160	19 L. C. Ebo 309.72 Robert Vance 209.72 Est.	20 F. A. Russell 160 Charles T. Hillen 160	21 John E. Sawyer 160 Robert Vance 160	22 Myron K. Southwick 160 George W. Foster 160	23 L. C. Ebo 309.72 Isaac Sullivan 160 Y. B. Thompson 160	24 D. L. Gohhart 160	25 J. O. McDaniel 160 Benjamin B. Foster 160	26 W. B. Peterson 160 Benjamin B. Foster 160	27 Ira Wolfe 160 Charles Lathan 160	28 Isaac Wolfe 160 Benjamin B. Foster 160	29 John A. Cartner 160 Edward Morris 160	30 Frank F. Walker 160 John A. Cartner 160	31 John Briggs 160 James A. Cofford 160	32 Andrew T. Walker 160 Octave Marcotte 160	33 William I. Temple 160	34 Robert W. Remon 160 Benjamin B. Foster 160	35 W. B. Peterson 160 John H. Neal 160	36 J. O. McDaniel 160 Jacob Babbitt 160

MAP OF
TOWNSHIP 7S RANGE 39 W

Scale 1/4 inch to 1 Mile.

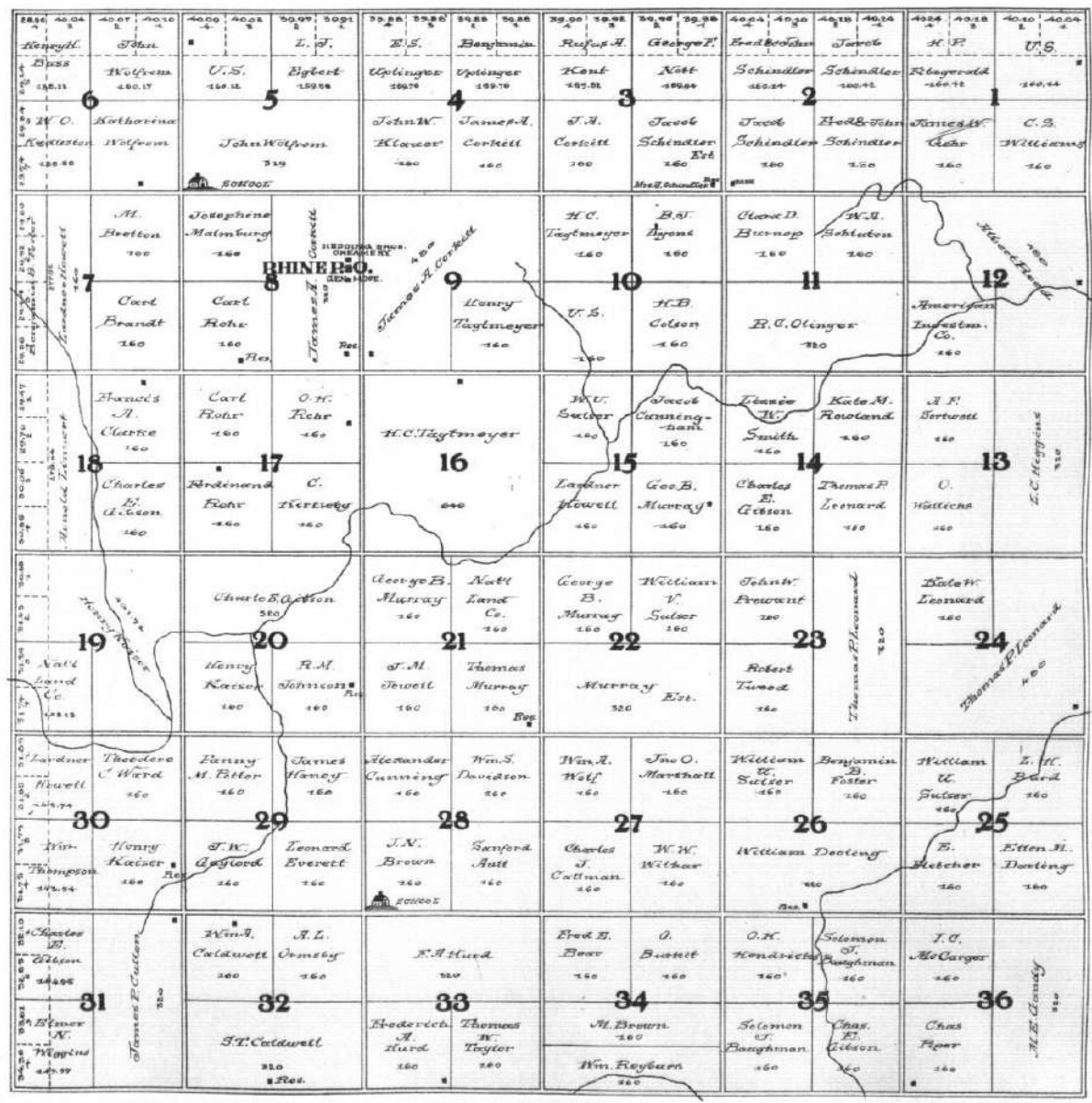
OF THE 6TH P. M.

34.22 1 Ernest Grieger 61712	33.98 2 Ernest Grieger 47984	33.73 3 D. Heaton 100	33.48 4 Chas T. Killen 159.51	33.23 5 Chas T. Killen 159.03	32.98 6 D. Heaton 100	32.73 7 Chas H. Shaffer 100	32.48 8 D. Heaton 100	32.23 9 Chas H. Shaffer 100	31.98 10 Benj B. Foster 107.51	31.73 11 Charles E. Gilson 100	31.48 12 Benjamin B. Foster 100	31.23 13 Jacob S. Artman 100	30.98 14 Sophie Artman 107.72	30.73 15 B.W. Peterson 100	30.48 16 Sophie Artman 107.72	30.23 17 B.W. Peterson 100	30.00 18 Sophie Artman 107.72
34.22 1 C.E. Smith 100	33.98 2 J.G. Clark 100	33.73 3 B.W. Peterson 100	33.48 4 W.J. Adams 100	33.23 5 Otto Fritz 100	32.98 6 Charles T. Killen 100	32.73 7 Beaco Gray 100	32.48 8 Benj B. Foster 100	32.23 9 Chalkley A. & Shaher B. Wilson 100	31.98 10 Wade M. D. 100	31.73 11 G. I. 100	31.48 12 John Sullivan 100	31.23 13 Chas T. Killen 100	30.98 14 Jacob S. Artman 100	30.73 15 Sophie Artman 107.72	30.48 16 Sophie Artman 107.72	30.23 17 Sophie Artman 107.72	30.00 18 Sophie Artman 107.72
34.22 1 Chas. Evans 100	33.98 2 Wm H. Rakestraw 100	33.73 3 Wm. Walker 100	33.48 4 Chas C. Evans 100	33.23 5 D. Heaton 100	32.98 6 Charles T. Killen 100	32.73 7 Wade Warner 100	32.48 8 Cuthbert 100	32.23 9 Chalkley A. & Shaher B. Wilson 100	31.98 10 Wade M. D. 100	31.73 11 G. I. 100	31.48 12 John Sullivan 100	31.23 13 Chas T. Killen 100	30.98 14 Jacob S. Artman 100	30.73 15 Sophie Artman 107.72	30.48 16 Sophie Artman 107.72	30.23 17 Sophie Artman 107.72	30.00 18 Sophie Artman 107.72
34.22 1 Chas E. Gibson 100	33.98 2 C.C. Evans 100	33.73 3 John Burch 100	33.48 4 Chas C. Evans 100	33.23 5 D. Heaton 100	32.98 6 C.C. Evans 100	32.73 7 Carroll L. C. 100	32.48 8 Bank Livengood 100	32.23 9 L. C. Livengood 100	31.98 10 Wade M. D. 100	31.73 11 G. I. 100	31.48 12 John Sullivan 100	31.23 13 Chas T. Killen 100	30.98 14 Jacob S. Artman 100	30.73 15 Sophie Artman 107.72	30.48 16 Sophie Artman 107.72	30.23 17 Sophie Artman 107.72	30.00 18 Sophie Artman 107.72
34.22 1 Robert Vance 100	33.98 2 Benj B. Foster 100	33.73 3 C. C. Evans 100	33.48 4 John Reese 100	33.23 5 D. Heaton 100	32.98 6 C.C. Evans 100	32.73 7 Carroll L. C. 100	32.48 8 Bank Livengood 100	32.23 9 L. C. Livengood 100	31.98 10 Wade M. D. 100	31.73 11 G. I. 100	31.48 12 John Sullivan 100	31.23 13 Chas T. Killen 100	30.98 14 Jacob S. Artman 100	30.73 15 Sophie Artman 107.72	30.48 16 Sophie Artman 107.72	30.23 17 Sophie Artman 107.72	30.00 18 Sophie Artman 107.72
34.22 1 Asher B. Wilson 100	33.98 2 Benj B. Foster 100	33.73 3 C. C. Evans 100	33.48 4 Chas. Gibson 100	33.23 5 E. I. Wickersham 100	32.98 6 Jas L. Morse 100	32.73 7 W. C. Wilson 100	32.48 8 Wade Warner 100	32.23 9 L. C. Livengood 100	31.98 10 Wade M. D. 100	31.73 11 G. I. 100	31.48 12 John Sullivan 100	31.23 13 Chas T. Killen 100	30.98 14 Jacob S. Artman 100	30.73 15 Sophie Artman 107.72	30.48 16 Sophie Artman 107.72	30.23 17 Sophie Artman 107.72	30.00 18 Sophie Artman 107.72
34.22 1 M. Gray 100	33.98 2 John H. Granger 100	33.73 3 Lardner Howell 100	33.48 4 Benj B. Foster 100	33.23 5 Joel Thunson 100	32.98 6 Gottlieb Berger 100	32.73 7 W. C. Wilson 100	32.48 8 Wade Warner 100	32.23 9 L. C. Livengood 100	31.98 10 Wade M. D. 100	31.73 11 G. I. 100	31.48 12 John Sullivan 100	31.23 13 Chas T. Killen 100	30.98 14 Jacob S. Artman 100	30.73 15 Sophie Artman 107.72	30.48 16 Sophie Artman 107.72	30.23 17 Sophie Artman 107.72	30.00 18 Sophie Artman 107.72
34.22 1 VOLTAIRE 100	33.98 2 Benj B. Foster 100	33.73 3 C. C. Evans 100	33.48 4 Smith Bros. Learnt Co. 100	33.23 5 J. W. Brooks 100	32.98 6 Wade Warner 100	32.73 7 John Volker 100	32.48 8 Wade Warner 100	32.23 9 L. C. Livengood 100	31.98 10 Wade M. D. 100	31.73 11 G. I. 100	31.48 12 John Sullivan 100	31.23 13 Chas T. Killen 100	30.98 14 Jacob S. Artman 100	30.73 15 Sophie Artman 107.72	30.48 16 Sophie Artman 107.72	30.23 17 Sophie Artman 107.72	30.00 18 Sophie Artman 107.72
34.22 1 Thomas P. Leighton 100	33.98 2 Benj B. Foster 100	33.73 3 Brice Dalrymple 100	33.48 4 Morris Franklin 100	33.23 5 W. W. Witham 100	32.98 6 Wade Warner 100	32.73 7 John Volker 100	32.48 8 Wade Warner 100	32.23 9 L. C. Livengood 100	31.98 10 Wade M. D. 100	31.73 11 G. I. 100	31.48 12 John Sullivan 100	31.23 13 Chas T. Killen 100	30.98 14 Jacob S. Artman 100	30.73 15 Sophie Artman 107.72	30.48 16 Sophie Artman 107.72	30.23 17 Sophie Artman 107.72	30.00 18 Sophie Artman 107.72
34.22 1 Jas. Sager 100	33.98 2 Jas. W. Westlake 100	33.73 3 James G. Donaldson 100	33.48 4 Gertrude J. H. Pettis 100	33.23 5 John Kagermann 100	32.98 6 Edgar H. Thomas 100	32.73 7 Wm G. Clarke 100	32.48 8 Wade Warner 100	32.23 9 L. C. Livengood 100	31.98 10 Wade M. D. 100	31.73 11 G. I. 100	31.48 12 John Sullivan 100	31.23 13 Chas T. Killen 100	30.98 14 Jacob S. Artman 100	30.73 15 Sophie Artman 107.72	30.48 16 Sophie Artman 107.72	30.23 17 Sophie Artman 107.72	30.00 18 Sophie Artman 107.72
34.22 1 A. Fender 100	33.98 2 Robert Wamsley 100	33.73 3 Chas G. Hattmann 100	33.48 4 Sam'l. M. Gephart 100	33.23 5 Wm. Busch 100	32.98 6 D. Heaton 100	32.73 7 Wm G. Clarke 100	32.48 8 Wade Warner 100	32.23 9 L. C. Livengood 100	31.98 10 Wade M. D. 100	31.73 11 G. I. 100	31.48 12 John Sullivan 100	31.23 13 Chas T. Killen 100	30.98 14 Jacob S. Artman 100	30.73 15 Sophie Artman 107.72	30.48 16 Sophie Artman 107.72	30.23 17 Sophie Artman 107.72	30.00 18 Sophie Artman 107.72

MAP OF
TOWNSHIP 7 S RANGE 40 W

Scale 1/8 inch to 1 mile.

OF THE 6TH P. M.



MAP OF
TOWNSHIP 7 S RANGE 42 W

Scale 1/4" (about) = 1 Mile.

OF THE 6TH P. M.

COLORADO	6	59 57 2 Keesler 1897	59 56 2 C. M. Millsack 1897	59 54 2 Frank Brinman 1895	59 52 2 4 3 47974	59 51 2 3 Robert Brosnahan 1895	59 50 2 4 3 2 1 Michael Mangold	59 49 2 4 3 2 1 Detmer 1890	59 48 2 4 3 2 1 Mary E. Knowlton 1890	59 47 2 4 3 2 1 Benjamin B. Foster	
	7	59 57 2 A. Marley 1890	59 56 2 Cassus M. Millsack 1890	59 54 2 John Christenson 1890	59 52 2 4 3 Veremiah Brosnahan	59 51 2 3 Eiburn D. Ackley Est 1890	59 50 2 4 3 2 1 National Land Co 1890	59 49 2 4 3 2 1 Larner 1890	59 48 2 4 3 2 1 James I. Porter 1890	59 47 2 4 3 2 1 Dwight W. Bundy 1890	
	8	59 57 2 E. C. Keesler 1897	59 56 2 Chris Christenson 1897	59 54 2 John P. Christenson 1897	59 52 2 4 3 C. E. Town 1890	59 51 2 3 W. H. Carnahan 1890	59 50 2 4 3 2 1 Emma A. DeLoria Brothers 1890	59 49 2 4 3 2 1 James L. Clark (Rech) 1890	59 48 2 4 3 2 1 Lardner Howell 1890	59 47 2 4 3 2 1 Nathaniel S. Simpson 1890	59 46 2 4 3 2 1 Clarence M. Hardung 1890
	9	59 57 2 Mary T. Knowlton 1890	59 56 2 Leslie M. Arnold 1890	59 54 2 C. Gibson 1890	59 52 2 4 3 Smith Bros. Leans Trust Co 1890	59 51 2 3 Arthur Richardson 1890	59 50 2 4 3 2 1 Lovane S. Parsons 1890	59 49 2 4 3 2 1 Chas. L. Dindra 1890	59 48 2 4 3 2 1 Wm Richardson 1890	59 47 2 4 3 2 1 G. L. Calvert 1890	59 46 2 4 3 2 1 George Cramer 1890
	10	59 57 2 Arthur Austin 1890	59 56 2 John W. Hamilton 1890	59 54 2 German Natl Bank 1890	59 52 2 4 3 William Richardson 1890	59 51 2 3 Lardner Howell 1890	59 50 2 4 3 2 1 Theodore P. Thompson 1890	59 49 2 4 3 2 1 Wm. Richardson 1890	59 48 2 4 3 2 1 G. W. Rosser 1890	59 47 2 4 3 2 1 Andrew Peterson 1890	
	11	59 57 2 T. H. Bandy 1890	59 56 2 G. L. Calvert 1890	59 54 2 A. S. Ormsby 1890	59 52 2 4 3 Theodore P. Thompson 1890	59 51 2 3 Theodore P. Thompson 1890	59 50 2 4 3 2 1 Theodore P. Thompson 1890	59 49 2 4 3 2 1 Theodore P. Thompson 1890	59 48 2 4 3 2 1 Earl V. D. Henry 1890	59 47 2 4 3 2 1 Brown Gernhart 1890	
STATE OF	12	59 57 2 Rowley Brothers 1890	59 56 2 Wilson Penn 1890	59 54 2 Lardner Howell 1890	59 52 2 4 3 F. M. Reynold 1890	59 51 2 3 Chas. E. Smith 1890	59 50 2 4 3 2 1 Hans Gannerman 1890	59 49 2 4 3 2 1 Burt Dolph 1890	59 48 2 4 3 2 1 H. O. Booth 1890	59 47 2 4 3 2 1 George Walker 1890	
	13	59 57 2 Geo. R. Haynes 1890	59 56 2 Henry Henderson 1890	59 54 2 Henry Frecker 1890	59 52 2 4 3 Dell Ross 1890	59 51 2 3 Dell Ross 1890	59 50 2 4 3 2 1 Theo. P. Thompson 1890	59 49 2 4 3 2 1 J. W. Tibbles 1890	59 48 2 4 3 2 1 A. Brown 1890	59 47 2 4 3 2 1 C. T. Timberlake 1890	
	14	59 57 2 William W. Meng and E. Lay 1890	59 56 2 Everett McCollum 1890	59 54 2 Win. T. Ingram 1890	59 52 2 4 3 Henry Deiter 1890	59 51 2 3 Thos. A. Fitch 1890	59 50 2 4 3 2 1 Theo. P. Thompson 1890	59 49 2 4 3 2 1 John T. Latimer 1890	59 48 2 4 3 2 1 A. Lester et al 1890	59 47 2 4 3 2 1 A. W. Millsack 1890	
	15	59 57 2 John B. Fleming 1890	59 56 2 Frank Wright 1890	59 54 2 Frank Wright 1890	59 52 2 4 3 Frank Wright 1890	59 51 2 3 Frank Wright & wife 1890	59 50 2 4 3 2 1 Henry Deiter 1890	59 49 2 4 3 2 1 W. L. Lanning 1890	59 48 2 4 3 2 1 Lardner Howell 1890	59 47 2 4 3 2 1 Charles O. LaShell 1890	
	16	59 57 2 A. E. Feltbone 1890	59 56 2 Frank Wright 1890	59 54 2 Frank Wright 1890	59 52 2 4 3 Frank Wright 1890	59 51 2 3 Frank Wright 1890	59 50 2 4 3 2 1 Henry Deiter 1890	59 49 2 4 3 2 1 A. Mead 1890	59 48 2 4 3 2 1 Andrew Hamilton 1890	59 47 2 4 3 2 1 James L. Canning 1890	
	17	59 57 2 John B. Fleming 1890	59 56 2 A. E. Feltbone 1890	59 54 2 Frank Wright 1890	59 52 2 4 3 Frank Wright 1890	59 51 2 3 Frank Wright 1890	59 50 2 4 3 2 1 Henry Deiter 1890	59 49 2 4 3 2 1 A. Mead 1890	59 48 2 4 3 2 1 Andrew Hamilton 1890	59 47 2 4 3 2 1 James L. Canning 1890	
18	59 57 2 John B. Fleming 1890	59 56 2 A. E. Feltbone 1890	59 54 2 Frank Wright 1890	59 52 2 4 3 Frank Wright 1890	59 51 2 3 Frank Wright 1890	59 50 2 4 3 2 1 Henry Deiter 1890	59 49 2 4 3 2 1 A. Mead 1890	59 48 2 4 3 2 1 Andrew Hamilton 1890	59 47 2 4 3 2 1 James L. Canning 1890		
19	59 57 2 John B. Fleming 1890	59 56 2 A. E. Feltbone 1890	59 54 2 Frank Wright 1890	59 52 2 4 3 Frank Wright 1890	59 51 2 3 Frank Wright 1890	59 50 2 4 3 2 1 Henry Deiter 1890	59 49 2 4 3 2 1 A. Mead 1890	59 48 2 4 3 2 1 Andrew Hamilton 1890	59 47 2 4 3 2 1 James L. Canning 1890		
20	59 57 2 John B. Fleming 1890	59 56 2 A. E. Feltbone 1890	59 54 2 Frank Wright 1890	59 52 2 4 3 Frank Wright 1890	59 51 2 3 Frank Wright 1890	59 50 2 4 3 2 1 Henry Deiter 1890	59 49 2 4 3 2 1 A. Mead 1890	59 48 2 4 3 2 1 Andrew Hamilton 1890	59 47 2 4 3 2 1 James L. Canning 1890		
21	59 57 2 John B. Fleming 1890	59 56 2 A. E. Feltbone 1890	59 54 2 Frank Wright 1890	59 52 2 4 3 Frank Wright 1890	59 51 2 3 Frank Wright 1890	59 50 2 4 3 2 1 Henry Deiter 1890	59 49 2 4 3 2 1 A. Mead 1890	59 48 2 4 3 2 1 Andrew Hamilton 1890	59 47 2 4 3 2 1 James L. Canning 1890		
22	59 57 2 John B. Fleming 1890	59 56 2 A. E. Feltbone 1890	59 54 2 Frank Wright 1890	59 52 2 4 3 Frank Wright 1890	59 51 2 3 Frank Wright 1890	59 50 2 4 3 2 1 Henry Deiter 1890	59 49 2 4 3 2 1 A. Mead 1890	59 48 2 4 3 2 1 Andrew Hamilton 1890	59 47 2 4 3 2 1 James L. Canning 1890		
23	59 57 2 John B. Fleming 1890	59 56 2 A. E. Feltbone 1890	59 54 2 Frank Wright 1890	59 52 2 4 3 Frank Wright 1890	59 51 2 3 Frank Wright 1890	59 50 2 4 3 2 1 Henry Deiter 1890	59 49 2 4 3 2 1 A. Mead 1890	59 48 2 4 3 2 1 Andrew Hamilton 1890	59 47 2 4 3 2 1 James L. Canning 1890		
24	59 57 2 John B. Fleming 1890	59 56 2 A. E. Feltbone 1890	59 54 2 Frank Wright 1890	59 52 2 4 3 Frank Wright 1890	59 51 2 3 Frank Wright 1890	59 50 2 4 3 2 1 Henry Deiter 1890	59 49 2 4 3 2 1 A. Mead 1890	59 48 2 4 3 2 1 Andrew Hamilton 1890	59 47 2 4 3 2 1 James L. Canning 1890		
25	59 57 2 John B. Fleming 1890	59 56 2 A. E. Feltbone 1890	59 54 2 Frank Wright 1890	59 52 2 4 3 Frank Wright 1890	59 51 2 3 Frank Wright 1890	59 50 2 4 3 2 1 Henry Deiter 1890	59 49 2 4 3 2 1 A. Mead 1890	59 48 2 4 3 2 1 Andrew Hamilton 1890	59 47 2 4 3 2 1 James L. Canning 1890		
26	59 57 2 John B. Fleming 1890	59 56 2 A. E. Feltbone 1890	59 54 2 Frank Wright 1890	59 52 2 4 3 Frank Wright 1890	59 51 2 3 Frank Wright 1890	59 50 2 4 3 2 1 Henry Deiter 1890	59 49 2 4 3 2 1 A. Mead 1890	59 48 2 4 3 2 1 Andrew Hamilton 1890	59 47 2 4 3 2 1 James L. Canning 1890		
27	59 57 2 John B. Fleming 1890	59 56 2 A. E. Feltbone 1890	59 54 2 Frank Wright 1890	59 52 2 4 3 Frank Wright 1890	59 51 2 3 Frank Wright 1890	59 50 2 4 3 2 1 Henry Deiter 1890	59 49 2 4 3 2 1 A. Mead 1890	59 48 2 4 3 2 1 Andrew Hamilton 1890	59 47 2 4 3 2 1 James L. Canning 1890		
28	59 57 2 John B. Fleming 1890	59 56 2 A. E. Feltbone 1890	59 54 2 Frank Wright 1890	59 52 2 4 3 Frank Wright 1890	59 51 2 3 Frank Wright 1890	59 50 2 4 3 2 1 Henry Deiter 1890	59 49 2 4 3 2 1 A. Mead 1890	59 48 2 4 3 2 1 Andrew Hamilton 1890	59 47 2 4 3 2 1 James L. Canning 1890		
29	59 57 2 John B. Fleming 1890	59 56 2 A. E. Feltbone 1890	59 54 2 Frank Wright 1890	59 52 2 4 3 Frank Wright 1890	59 51 2 3 Frank Wright 1890	59 50 2 4 3 2 1 Henry Deiter 1890	59 49 2 4 3 2 1 A. Mead 1890	59 48 2 4 3 2 1 Andrew Hamilton 1890	59 47 2 4 3 2 1 James L. Canning 1890		
30	59 57 2 John B. Fleming 1890	59 56 2 A. E. Feltbone 1890	59 54 2 Frank Wright 1890	59 52 2 4 3 Frank Wright 1890	59 51 2 3 Frank Wright 1890	59 50 2 4 3 2 1 Henry Deiter 1890	59 49 2 4 3 2 1 A. Mead 1890	59 48 2 4 3 2 1 Andrew Hamilton 1890	59 47 2 4 3 2 1 James L. Canning 1890		
31	59 57 2 John B. Fleming 1890	59 56 2 A. E. Feltbone 1890	59 54 2 Frank Wright 1890	59 52 2 4 3 Frank Wright 1890	59 51 2 3 Frank Wright 1890	59 50 2 4 3 2 1 Henry Deiter 1890	59 49 2 4 3 2 1 A. Mead 1890	59 48 2 4 3 2 1 Andrew Hamilton 1890	59 47 2 4 3 2 1 James L. Canning 1890		

MAP OF TOWNSHIP 8 S RANGE 37 W

Scale 1/4 inch to 1 mile.

OF THE 6TH P. M.

64.74 59.88 50.70 50.70		50.71 50.81 42.21 42.21		50.25 50.35 39.27 39.27		39.28 39.38 29.28 29.28		29.29 29.39 19.29 19.29		19.30 19.40 9.30 9.30		9.31 9.41 0.31 0.31		0.32 0.42 10.32 10.32	
A.G. Collier 150.00		H.C. Crumbly 159.91		Samuel D. Meloy 159.91		Jeremiah Bowen, Etc. 159.91		J.M. Bomers 159.91		L.M. Langtor 159.91		E.M. Flamerston 159.91		Henry Moore 159.91	
6		5		4		3		2		1					
Smith, Egan, Eddy, B.L., Co. 159.16		R.W. Rhodes 160		Ernest S. Stanley 160		James Henry Collier 160		H.H. Jones 160		James H. Gehr 160		Walter L. Thompson 160		Henry Logten 160	
Henry 159.75		R.C. Rhodes 160		Jesse I. Craft 160		Clementine Hammond 160		Clyton 160		Thomas 160		Charles 160		George 160	
7		8		9		10		11		12					
John A. Steadman 158.85		Milford Stangland 160		H.W. Windchaff 160		Charles Lehr 160		Clyton 160		Thomas 160		Charles 160		George 160	
H.C. Cookman 158.10		R.C. Stewart 160		Charles Chambers 160		Jed. Hollenbeck 160		Ed. McDaniel 160		Ezra 160		J.W. Penley 160		Sam 160	
18		17		16		15		14		13					
Ernest J. Stewart 160.10		Senos J. Brown 160		Berkth Stewart 160		Judson Hollenbeck 160		C.A. Morehouse 160		E.W. Jones 160		T.C. Eddy 160		Julius R. Jacobs 160	
19		20		21		22		23		24					
Robert C. Stewart 159.10		Edward C. Stewart 160		F.E. Ormsby 160		Evelyn Ramsay 160		James F. Harris 160		E.W. Abregat 160		M.F. Fickard 160		James H. Taylor 160	
20		21		22		23		24							
Mati Lutz Pennington 159.10		Robert C. Stewart 160		K.W. Leonard 160		R.E. Hopkins 160		Henry F. Nantkes 160		James M. Jacobs 160		Milton H. Cleve 160		Tad H. Howell 160	
28		29		30		31		32		33		34		35	
Lorenzo C. Wiggins 160.50		Clarence D. Noyes 160		School Robert C. Stewart 160		Thomas W. Gehr 160		H.E. Hopkins 160		R.B. Hopwood 160		E.H. Wiggins 160		Victor Body and J.B. Hampton school 160	
30		29		28		27		26		25					
Marion T. Tuller 159.74		Thomas Leonard 160		D.H. Hall 160		Samuel Bowen 160		Bertea Collins 160		Columbia Herman 160		George Heil 160		Amel D. Souday 160	
31		32		33		34		35		36					
Geo. George & Fred. Manly 159.50		A.C. McVitt & T.M. H. How 160		L.T. Golden 160		J.E. Douglas 160		Fred S. Cordata 160		Edw. H. Ketter 160					
31		32		33		34		35		36					
Henry & Channing B. Barber 159.50		Henry J. Knoll 160		Win. C. Indor 160		James H. Gehr 160		Henry A. Smith 160		W.S. Trenhaile 160					



MAP OF

TOWNSHIP 8 S RANGE 38 W

Scale 1/4 inch = 1 Mile.

OF THE 6TH P. M.

14 94 30 94 4 3 5 Alvin S Gafford 309 77 5	30 01 30 04 4 3 5 James W Grant 319 36 5	30 76 30 60 4 3 5 D. Hoatson 318 22 5	30 44 30 28 4 3 5 A W Guthrie 1593 4	30 22 30 06 4 3 5 A Bigelow 4787 4	30 08 30 72 4 3 5 Eranna- man 15991 3	30 00 30 02 4 3 5 C. P. Wagner 180 3	40 24 40 41 4 3 5 Ludwig 180 65 3	40 47 40 43 4 3 5 Allen 180 90 2	40 37 40 38 4 3 5 Ingham 180 70 2	40 27 40 35 4 3 5 Mary, Edith & Franklin Durant 180 2	40 19 40 11 4 3 5 H B Sackman 180 1	40 04 40 04 4 3 5 J C Penticko 180 1																									
7 Bay W Plummer 180 7	8 James Sager 180 8	9 James Sager 640 9	10 James Sager 320 10	11 John P Windhorst 180 11	12 Jas A Totten 180 12	13 John Schellady 180 13	14 William Raus 580 14	15 Bing K Skinner 420 15	16 Henry E. Harms 320 16	17 M J W. F. A. McNeilly 180 17	18 M P Whalen 180 18	19 G. L. Carter 180 19	20 Chas F. Hallman 180 20	21 Francis Nicotter 180 21	22 C S Maaten 180 22	23 Johnson Pope 180 23	24 E. J. Tippens 180 24	25 R A. Kent 180 25	26 John Meyer 180 26	27 D F Parker 180 27	28 R G. Miller 240 28	29 J W Hall 320 29	30 A B Devey 180 30	31 J L Daniels 180 31	32 Levi S. Bachelor 180 32	33 John Stewart 180 33	34 Wade Walker 180 34	35 J. W. Hall 320 35	36 A B Devey 180 36								
30 Joe D. March- 14001 14024 30	31 N E Albertson 180 31	32 J. W. Vigan 180 32	33 Rhodes Allen 180 33	34 Mary C. Albertson 180 34	35 Benj E. Ebster 180 35	36 RC Smith 480 36	37 George Jones 180 37	38 Joe S Williams 180 38	39 Joe S. Williams 320 39	40 T P Ira R. Crawford Austin 180 40	41 Mrs. Peterson 180 41	42 Ira R. Austin 180 42	43 F. M. Simmons 580 43	44 Nova C. Baker 180 44	45 George Jones 180 45	46 Anthony Neth 480 46	47 Dr. Eddy 180 47	48 John Alley 180 48	49 Schabod Warner Austin 180 49	50 John W. Burch 180 50	51 Elery B. Wilson 180 51	52 Augustus Peterson 180 52	53 H. J. Greenwood 180 53	54 Anthony Neth 180 54	55 Wm T. Hartley 180 55	56 Joe Williams 180 56	57 S. D. Still 180 57	58 John Powell 180 58	59 L. F. Smalley 31020 59	60 W. B. Smalley 240 60	61 T. C. Shipman 240 61	62 J. B. Campbell 180 62	63 M. A. Alexander 180 63	64 Anthony Neth 180 64	65 Robert Schermer 180 65	66 John Powell 180 66	67 W. C. Warden 310 67

MAP OF
TOWNSHIP 8 S RANGE 39W

Scale 1/4 inch to 1 Mile.

OF THE 6TH P. M.

3336 3330 3324 3318 10 9 8 7 Geo. J. Hoefler 10 5 57	3374 3368 3362 3356 4 3 2 1 James Buller 316 56	3320 3314 3308 3302 3 2 1 Wm Walker 250 38	3274 3268 3262 3256 4 3 2 1 Fred W. Schiefen 312 00	3200 3194 3188 3182 4 3 2 1 R. E. Holt 312 00	3076 3070 3064 3058 4 3 2 1 Lee Slusher 470 44
6 L. F. Hoefler 280	5 James Flaney 260	4 Wm Walker 180 57	3 Charles Nealon 280	2 Jennie Hawkins 320	1 Wm. H. Stone 200
Henry Piper 280 79	Wm Walker 280	T. A. Stephenson 260	Wm Walker 260	Alex. Stream 260	Chas. Heston 260
7 Honey 250 79	Wm Walker 260	8 Adam Kopp 280 1/2	9 Alex. Heston 260	10 H. M. & J. C. Heston 260	11 Wm. H. Stone 260
8 James Flaney 280 42	9 L. C. Lockhardt 260	10 Wm Walker 260	11 Adam Kopp 260	12 M. E. Gandy 260	13 O. N. McDowell 260
17 James Flaney 280 42	18 L. C. Lockhardt 260	19 Wm Walker 260	20 Adam Kopp 260	21 M. E. Gandy 260	22 O. N. McDowell 260
19 O. E. Fosum 280	20 Jacob Lemmer 280	21 Fred S. Smalley 260	22 John W. Smalley 260	23 Joseph Cullins 260	24 A. L. Cullins 260
30 O. E. Fosum 280	29 J. C. Lockhardt 260	28 T. W. Sumner 260	27 Elizabeth Young 320	26 James Riley 260	25 Frank Waters 260
31 Andrew T. Schmidt 280	32 G. L. Calvert 260	33 G. L. Calvert 260	34 Joe A. Bales 260	35 B. J. Gee 260	36 David Wolf 260
31 Harry Widrig 260	32 John S. Tripp 260	33 John S. Tripp 260	34 H. J. Meins 260	35 Mary Gauch 260	36 I. Warner 260
31 Harry Widrig 260	32 John S. Tripp 260	33 John S. Tripp 260	34 H. J. Meins 260	35 Mary Gauch 260	36 I. Warner 260
31 Harry Widrig 260	32 John S. Tripp 260	33 John S. Tripp 260	34 H. J. Meins 260	35 Mary Gauch 260	36 I. Warner 260



MAP OF
TOWNSHIP 8 S RANGE 40 W

Scale 1/4 inches to 1 Mile.

OF THE 6TH P. M.

1399 1401 4008 4005 4 3 2 1	4008 4010 4012 4018 3 2 1	4012 4018 4020 4022 2 1	4018 4020 4022 4024 1	4007 4005 4003 4001 3 2 1	3991 3997 3995 3979 4 3 2 1	3979 3985 3991 3997 4 3 2 1	3997 3995 3993 3991 4 3 2 1
C. S. Pingry 300 75	Jewell 160 18	Loan & Trust 200 32 Co	Hurd 160 32	Suelander 160 18	Bauer 160 04	Peepson 119 00	Baughman 119 54
6 Robert Vance 150 16	Albert Carl 160	Sarah T Taylor 160	I. H. Taylor 160	Ernest Harnisch 160	Magnus Johnson 160	Lordner Howell 160	H. B. Ward 160
John Duell 150 70	Charles Woodrow 160	William Seyler & Robert Vance	William Seyler & Robert Vance	Robert Vance 160	Robert Vance 160	William Seyler 160	W. T. Burwell, Sr 319 02
7 D. Heaton 311 20	Robert Vance 8 40	Robert Vance 4 80	Olo Erickson 160	W. W. Witham	Charles N Burkell 320	John M. Hoover	H. J. Piper 200
18 Duell 150 26	Robert Vance 320	Robert Vance 4 80	A. E. King 160	Brice Dalrymple 160	Charles N Burkell 320	John M. Hoover	Douglas 120
19 H. T. Dimmitt 280 88	H. T. Dimmitt 160	J. M. Townsend 150	J. M. Townsend (Lease) 150	Geo. A. Carter 160	A. B. Koester 160	Cummings W. L. 160	James Honey 160
20 Frank L. Dimmitt 160	G. L. Dimmitt 160	W. H. Sanford 160	W. W. Witham 160	F. M. Baughman 160	Y. C. Heaton 160	Robison Lowery 160	James E. Thomas 160
30 B. H. Foster 300 74	H. K. Dimmitt 160	G. L. Dimmitt 160	E. M. Frowant 160	Wm F & John L. Keltman 160	Clara E. Gidley 160	Joseph F. Rimmel 400	Samuel Whipp 160
31 Frank Sylvester 190 26	Anna B. Sylvester 160	A. L. Omsby 160	J. W. Klauer 160	M. F. Bunker 160	A. A. Marak 160	Joseph F. Rimmel 400	James E. Thomas 160
32 Inez Mc Cannon 160	Albert J. August 300	J. H. Evans 160	Elfte M. Webber 160	Chas N. Burkell 160	J. W. Tibbets 160	Caroline Hundert 160	Charles Wernke 160
33 Wade Warner 160	S. S. Soak 160	H. H. Bartling 160	D. Heaton 160	O. E. Yocum 320	O. E. Yocum 320	J. S. Calvert 320	A. Lynch 160
34	35	36	37	38	39	40	41

GOODLAND

PACIFIC

SCHOOL

SCHOOL

SCHOOL

SCHOOL



MAP OF
TOWNSHIP 8 S RANGE 41 W

Scale 1/4 inch = 1 mile.

OF THE 6TH P. M.

3002 3000 Loren Bartley 150 00	3004 3001 L.M. Welsh 150	3007 3002 German Nat'l Bank 150 00	3003 3005 Chas. E. Gibson 150 00	3007 3005 John A. Keenan 150 00	3002 3004 John Bathhouse 150 05	3000 3000 Geo. Adam Ritscher 150 15	3002 3002 Allen O. Hartquist 150 00	3002 3002 C. J. Shimeall 150 10	3002 3002 C. J. Shimeall 150 00	3002 3002 C. J. Shimeall 150 00	3002 3002 C. J. Shimeall 150 00
6 Georgia Wise 150 10	Sarah E. Coyner 150	5 Chas. C. Stone 150 00	A. Wright 150	4 Leonard Everett 150	August Duell 150	3 Lardner Howell 150	Mary L. Everett 150	2 Victor Baughman 150	General Trust Co 150	A. B. Sexton 150	Geo. B. Sperry 150
Landner Howell 150 00	G.W. Ross 150	National Land Co 150	Frances Errington 150	A. B. Dewey 150	August Duell 150	August Duell 150	Christina Bangston 150	Wm F & J L Kollman 150	SCHOOL George S. Sperry 150		
7 Geo. E. White 150 05	A. E. Ferkery 150	8 Equitable Land Co 150	Wm. M. Errington 150	9 Franklin Samuelson 150	Thomas Butler 150	10 Emmet J. Dawson 350	11 W. W. Gehr 150	Wm. Farrow 150	12 Frank Fooster 150		
18 C. C. Winery 150 10	W.M. Errington 150	Hugh Errington 150	George Hubanks 150	17 Oliver Hunt 150	J. B. Putnam 150	16 Emmet J. Dawson 150	15 John C. Wright 150	14 James Sager 350	13 Frank L. Fooster 150	John W. Pobst 150	
Benj. B. Foster 150 04	H. F. Errington 150	T. B. Welso 150	Hugh Errington 150	Lizzie Butler 150	E. of Dawson 150	Warren Shamburg 150	C. W. Kammer 150	13 Wm. Anderson 150	13 Wm. Anderson 150	Loren D. Brass 150	
Smith Bros Loon & Middleton 150 00	M. B. Peterson 150	Nils Peterson 150	Hugh E. Errington 150	H. F. Errington 150	E. J. Dawson 150	I. W. Gaylord 150	John A. Nelson 150	Res. of G. H. Mogge Minna Mogge 150	RC Vance 150	24 W. A. Baker 150	
19 German National Bank 150 10	James H. Babcock 150	20 Alvin F. Sortwell 150	21 Edward Knight 150	E. L. Sholes 150	22 James W. Gehr 150	23 Robert C. Vance 150	24 W. A. Baker 150	RR.			
30 Fred Middleton 150 10	U.S. 150	29 D. A. Long 450	28 Edwin E. Woodcock 150	A. B. Dewey 150	Henry Hall 150	Kate W. Leonard 150	M. D. Chilton 150	D. B. Wilson 150	Ray Sylvester 150	L. A. Day 150	
Martha Vick & Panna M. Wilson 150 00	Chas. E. Geborn 150	Smith Bros Loon and Trust Co 150	C. C. Daubin 150	Benj. B. Foster 150	L. B. Traas 150	Laura G. Long 150	Benj. B. Foster 150	D. A. Long 150	Frank Sylvester 150		
31 Andrew Foster 150	Benj. B. Foster 150	32 Joseph A. Brook 150	D. S. Weaver 150	G. W. Jones 150	S. M. Drake 150	Anna Stouffer 150	Kate W. Leonard 150	Kate W. Leonard 150	Martin A. Alexander 150	Frank Sylvester (Lease) 150	
John E. Smith 150 05	U.S. 150	Wade Warner 150	D. A. Long 150	D. S. Weaver 150	David G. Truell 150	Mary M. Maloney 150	Sam'l L. Cunning- ham 150	Henry T. Plummer 150	K. P. Gardner 150	D. A. Long 150	W. E. Gundy 150

MAP OF

TOWNSHIP 8S RANGE 42 W

Scale 1/64 inch to 1 Mile.

OF THE 6TH P. M.

COLORADO	6	3718	3720	3720	3720	3765	3765	3767	3767	3805	3807	3811	3811	3812	3814	3814	3816	3816	3854	3856	3856	3858
7		1	2	3	4	5	6	7	8	9	10	11	12	13	14	15	16	17	18	19	20	
18		18	19	20	21	22	23	24	25	26	27	28	29	30	31	32	33	34	35	36	37	
19		18	19	20	21	22	23	24	25	26	27	28	29	30	31	32	33	34	35	36	37	
30		18	19	20	21	22	23	24	25	26	27	28	29	30	31	32	33	34	35	36	37	
31		18	19	20	21	22	23	24	25	26	27	28	29	30	31	32	33	34	35	36	37	
STATE OF		18	19	20	21	22	23	24	25	26	27	28	29	30	31	32	33	34	35	36	37	

<p>George W. Allen 250 250</p>	<p>Peter C. Rosenthal 437 80</p>	<p>C. D. Swain 3100 3</p>	<p>Saml. Burton 150 42</p>	<p>A. I. Ingles 150 14</p>	<p>John Barr 312 28</p>	<p>Ferd. Siemens 159 10</p>	<p>R. F. Shubert 159 72</p>	
<p>Win. Humphrey 380</p>	<p>Wm. L. Warner 280</p>	<p>John Blanchard 180</p>	<p>W. D. Taylor 160</p>	<p>J. E. Turner 320</p>	<p>Herbert C. Phipps 350</p>	<p>Gilbert E. Sager 160</p>	<p>SCHOOL D. F. Yeater 260</p>	
<p>L. W. Shannon 160</p>	<p>Alfred Johnson Residence of O. C. Johnson</p>	<p>Joel Shannon 160</p>	<p>George Cramer 280</p>	<p>S. D. Clark 180</p>	<p>Alfred Johnson 180</p>	<p>Elmer M. Creuse 320</p>	<p>Gilt. E. Sager 260</p>	<p>W. S. Jeffrey 160</p>
<p>G. L. Calvert 180</p>	<p>Alfred Johnson 160</p>	<p>George Cramer 160</p>	<p>George Cramer 160</p>	<p>George Cramer 160</p>	<p>Robert F. Kaylor 180</p>	<p>Ayrick Haysler 160</p>	<p>John Scurwine 180</p>	<p>Aleg. Sartwell 160</p>
<p>John Allender 280</p>	<p>George Cramer 160</p>	<p>W. H. Carnahan 160</p>	<p>George Cramer 320</p>	<p>Chas. E. Gibson 180</p>	<p>Chas. E. Crouse 180</p>	<p>Jacob W. Crouse 160</p>	<p>James L. Wheeler 180</p>	<p>David W. Middleton 160</p>
<p>Clayton H. Friggs 280</p>	<p>A. C. Bondurant 260</p>	<p>Cordeia Pacion 160</p>	<p>George Cramer 160</p>	<p>J. J. Beyler 160</p>	<p>J. J. Beyler 160</p>	<p>Warren E. Middleton 380</p>	<p>W. E. Warden 160</p>	<p>Stephen B. Middleton 320</p>
<p>Lardner Howell 160</p>	<p>Mary H. Blystone 160</p>	<p>Frank Seely 160</p>	<p>Frank L. Walker, Sr. 160</p>	<p>J. J. Beyler 160</p>	<p>Lida Jones 180</p>	<p>Clem Stiles 160</p>	<p>Thos. Williamson 320</p>	<p>A. J. Richey 160</p>
<p>J. G. Gebhardt 160</p>	<p>Frank Seely and William Walker, Jr. 260</p>	<p>Mary H. Blystone 320</p>	<p>John Hawkins 160</p>	<p>Robert Eyle 160</p>	<p>Martha Stover 160</p>	<p>Thos. Williamson 320</p>	<p>B. F. Brown 260</p>	<p>A. J. Richey 160</p>

KANORADO

CHICAGO ROCK ISLAND PACIFIC

German Natl. Bank B. Middleton R.R.

Residence of B. F. Brown

MAP OF TOWNSHIP 9 S RANGE 37 W

Scale 1/8" = 1 mile

OF THE 6TH P. M.

2425 2909 4 3 J. H. Downing 24892 159 74	3900 3900 4 2 3 A Morey 159 74	3900 4000 4000 4 3 2 1 Nathaniel Littel 320 48	4000 4000 4136 4136 2 2 1 Charles Vail 324 60	4136 4136 4146 4136 2 1 1 Wm. R. Jacobs 166	4146 4104 4004 4004 4 3 2 1 Wells Wolfe 161 19 166 77	4004 4004 4029 4010 4 3 2 1 Wm. R. Jacobs 441 08
3078 3078 7 6 5 D. Hinton 7 52	3078 3078 6 5 4 Linda C. Paxton 100	3078 3078 5 4 3 U. P. Land Co. 380	3078 3078 4 3 2 J. E. Srack 160	3078 3078 3 2 1 J. S. Jobe 450	3078 3078 2 1 Nick Schroeder 320	3078 3078 1 Wm. R. Jacobs 441 08
3078 3078 3 2 1 J. R. Wacker 200	3078 3078 2 1 First Natl. Bank of Greenfield 160	3078 3078 1 Henry Lowe 150	3078 3078 1 U. P. Land Co. 640	3078 3078 1 Jens Johsen 160	3078 3078 1 B. P. Welle 150	3078 3078 1 August E. Anderson 160
3078 3078 4 3 2 1 J. H. Standish 160	3078 3078 3 2 1 G. L. Catvert 150	3078 3078 2 1 Philip Metzger 160	3078 3078 1 U. P. Land Co. 640	3078 3078 1 Genesee Live Stock Co. 160	3078 3078 1 H. T. Beaver 160	3078 3078 1 Marion W. Johnson 180
3078 3078 4 3 2 1 J. H. Standish 160	3078 3078 3 2 1 Genesee Live Stock Co. 640	3078 3078 2 1 Genesee Live Stock Co. 640	3078 3078 1 Genesee Live Stock Co. 640 (Lease)	3078 3078 1 Genesee Live Stock Co. 640	3078 3078 1 Mattie's Odenkirk 160	3078 3078 1 Genesee Live Stock Co. 640
3078 3078 4 3 2 1 Genesee Live Stock Co. 160	3078 3078 3 2 1 Genesee Live Stock Co. 480	3078 3078 2 1 W. W. Witham 160	3078 3078 1 Genesee Live Stock Co. 640	3078 3078 1 W. W. Witham 160	3078 3078 1 Sven Austby 160	3078 3078 1 Chas. A. Stokes 160
3078 3078 4 3 2 1 W. W. Witham 160	3078 3078 3 2 1 Genesee Live Stock Co. 640	3078 3078 2 1 Genesee Live Stock Co. 640	3078 3078 1 Genesee Live Stock Co. 640	3078 3078 1 Genesee Live Stock Co. 640	3078 3078 1 Chas. A. Stokes 160	3078 3078 1 Herman Kohen 160
3078 3078 4 3 2 1 W. W. Witham 160	3078 3078 3 2 1 Genesee Live Stock Co. 640	3078 3078 2 1 Genesee Live Stock Co. 640	3078 3078 1 Carrie L. J. Simons 160	3078 3078 1 W. W. Witham 160	3078 3078 1 D. Mc Vean 160	3078 3078 1 Jas. C. Anderson 160
3078 3078 4 3 2 1 W. W. Witham 160	3078 3078 3 2 1 Genesee Live Stock Co. 640	3078 3078 2 1 Wm. C. Ackerman 160	3078 3078 1 George West 640	3078 3078 1 Dan Ryan 160	3078 3078 1 Howard Ross 160	3078 3078 1 Genesee Live Stock Co. 640
3078 3078 4 3 2 1 Genesee Live Stock Co. 160	3078 3078 3 2 1 Sam. Grant 160	3078 3078 2 1 John F. Kerrigan 160	3078 3078 1 George West 640	3078 3078 1 Genesee Live Stock Co. 160	3078 3078 1 Robt. C. Vance 160	3078 3078 1 Genesee Live Stock Co. 640
3078 3078 4 3 2 1 Genesee Live Stock Co. 160	3078 3078 3 2 1 George G. West 127 04	3078 3078 2 1 John F. Kerrigan 160	3078 3078 1 John F. Kerrigan 160	3078 3078 1 Genesee Live Stock Co. 160	3078 3078 1 Robt. C. Vance 160	3078 3078 1 Genesee Live Stock Co. 640 (Lease)

CO.

THOMAS



MAP OF
TOWNSHIP 9 S RANGE 38 W
 Scale 1/4 inch to 1 Mile.

OF THE 6TH P. M.

35 14, 39 91 Fred. L. Smith 159.84	35 20, 39 70 Wm S. Smailey 159.84	35 24, 39 70 Joshua R. Shipman 159.84	35 26, 39 62 V. K. Eubank 159.84	35 26, 39 76 Robert Bros 159.84	35 28, 39 82 Smith & Clarke 159.84	35 28, 39 90 Jas N. Daniel 159.84	35 30, 39 82 D. E. Vance 159.84	35 30, 39 90 S. L. Daniels 159.84
Jacob Heire of Wachsset CW Sigman 100 School	Jacob W. Kipp 100	Casper C. Kipp 100	John Wilcox 100	H. H. E. 100	Hepulin Steude 100	J. L. Daniels 270.78	George Beaver 100	Smith Bros Loan & Tr Co 100
E. W. Guzman 100	Casper C. Kipp 100	B. J. Skinner 100	John Kipp 100	H. H. E. 100	Melville E. D. Bailiff Colley 100	C. M. Millisat 100	John A. Standish 100	Anthony W. Snyder 100
Bing J. Skinner 400.88	Bing J. Skinner 400	Bing J. Skinner 400	Peder K. Jensen 100	Peder K. Jensen 320	Henry Geyer 100	J. B. Colby 100	School	
Bing J. Skinner 100	Bing J. Skinner 100	Bing J. Skinner 100	Peder K. Jensen 320	Dwight Baldwin 320	Matilda Henry Vogan Geyer 100	George W. M. Babbitt Collins 100	Genesee Live Stock Co. 640	
Thery Everett 472.92	17 640	16 640	15 320	14 160	13 640	12 100	11 100	10 400
Wm. Lewis 150	Henry M. Rees 100	Elta J. Rider 100	R. Dent 100	Curtis E. Wells 640	German Wall Bank 100	George West 640	Genesee Live Stock Co. 480	Augusta F. Scheider 100
Wm. P. Johnson 100	Fred. Hodge 100	Peter Harizler 320	20 320	21 640	22 640	23 640	24 640	25 640
Lee Hartler 100	Geo. E. Don Carlos 640	Harla E. 640	28 100	Meyer Heldman 100	George G. West 640	George W. West 100	D. O. Beam 100	Abel P. Teogno 100
Joe Van Dong 312.80	John R. Kling 100	Elizab. Kling 100	R. E. Jewell 640	33 640	34 100	35 640	36 640	37 640
C. M. Niegatte 312.80	Elizab. Kling 100	Ernest D. Colley Est 100	32 100	31 100	30 100	29 100	28 100	27 100



MAP OF
TOWNSHIP 9 S RANGE 39 W
Scale 1/4" (about) 1 Mile.

OF THE 6TH P. M.

30.40 30.45 30.50 30.55 31.00	30.25 30.30 30.35 30.40 30.45	30.10 30.15 30.20 30.25 30.30	30.00 30.05 30.10 30.15 30.20	29.85 29.90 29.95 30.00 30.05	29.70 29.75 29.80 29.85 29.90	29.55 29.60 29.65 29.70 29.75	29.40 29.45 29.50 29.55 29.60	29.25 29.30 29.35 29.40 29.45	29.10 29.15 29.20 29.25 29.30	28.95 29.00 29.05 29.10 29.15
Stemwell 216.99 6	Stemwell 218.19 5		Kaye & Monte 218.09 4	Karlacher 219.44 3	Colvert 220.24 2	Trachselt 220.24 2	Chandler 220.15 1			
Augustus F. Thompkins 218.21	W.W. Wetham 218.0		S.D. Wilson 218.0	Henry F. Berichs 218.0	Elydie H. Halon 218.0	John George Sharpe 218.0	John Siemens 218.0	John Seinwand 218.0		
A.H. Thompkins 218.41	Tom McCool 218.0	A.F. Thompkins 218.0	B. Frederichs 218.0	Henry Frederichs 218.0	Reg Henry Frederichs 218.0	Ann E. Dunberry 218.0	Ernest Schubert Hairs 218.0	H.H. Bierhoff 218.0	E.H. Bierhoff 218.0	Bernard Kronwald 218.0
Edgar Hansell 218.07	Ernest Wassell 218.0	Walter Rawlinson 218.0	Augustus Thompkins 218.0	Mary L. Ego 218.0	Albert Harms 218.0	John H. Sharpe 218.0	Etta Semmes 218.0	F.B. Hardman 218.0	Fred Mc Hester 218.0	Harry Moore 218.0
David & Mary J. Tittle 218.61 18	William Saylor 218.0		E.A. Cormichael 218.0	Wm. Walter 218.0	Albert Harms 218.0	Wade Härner 218.0	J.E. Hardman 218.0	John A. Kearns 218.0		Wm. Diebrieger 218.0
David A. Tittle 217.86	A.F. Tompkins 218.0		John West 218.0	Geo W. Kinsattel 218.0	Byron Farrish 218.0	F. E. Hardman 218.0	L. A. Golden 218.0	Timothy McLaughlin 218.0		Leonard Kurett 218.0
Chas. C. Kallman 217.97 SCHOOL										
A.C. Smith 217.75 19	Byron Farrish 218.0	Henrietta Farrish 218.0	J. H. Tackett 218.0	Edward Kotest 218.0	Alexander West 218.0	John & Green Wade Warren 218.0	Leticia Mc Laughlin 218.0	J. A. Swanson 218.0	Mitchell & Laughery 218.0	
Flora Kortury 217.71	Bett Wassell 218.0	Byron Farrish 218.0	William Kortury 218.0	Geo. A. Carter 218.0	H. E. Harms 218.0	H. T. Gronquist 218.0	Leticia Mc Laughlin 218.0	Charles C. Woods 218.0		
Kramer Thompson 217.77 20	Mortimer Cochell 218.0	A. J. Fice 218.0	Ernest S. Kittman 218.0	Richard S. Kittman 218.0		E. Cary 218.0	David & Smith 218.0	D. E. Anderson 218.0		
W. Lippard 217.51	George A. Carter 218.0 SCHOOL	Geo. B. Carter 218.0	Ida M. Selt 218.0			Lenora Smith 218.0	S. L. M. Hewer 218.0	Herman Bures 218.0	Nichols & Snegreed 218.0	
	F. O. Hulberg 218.0	Frank Kooper 218.0	Mary Baxwell 218.0	George H. Carter 218.0	W. S. Thieman 218.0	Leonora Smith 218.0	Martha Cary 218.0	H. D. Bull 218.0	E. J. Eicher 218.0	
	Frank Kooper 218.0	Maek Anderson 218.0	Dan D. Farrar 218.0	Dan D. Farrar 218.0	General Trust Co. 218.0	E. C. Swann 218.0	Thomas T. Vale 218.0	Mary Hansen 218.0	Thomas Bull 218.0	John C. Witch 218.0

MAP OF
TOWNSHIP 9 S RANGE 40 W

Scale 1/8 inch = 1 mile.

OF THE 6TH P. M.

34.50 39.00 39.00 39.40 4 3 2 1	39.00 39.00 39.40 4 3 2 1	39.14 39.00 39.50 39.10 4 3 2 1	37.02 37.78 37.92 37.40 4 3 2 1	37.42 37.58 37.72 37.87 4 3 2 1	37.06 37.00 38.03 38.06 4 3 2 1	38.32 38.00 38.20 38.76 4 3 2 1			
McCann 6 140 21	McCann 6 160	H. J. Bartling 5 320	Dinwidie 4 155 74	Dinwidie 4 155 00	Seeburger 3 320	Jocum 2 320	George Brunkmeyer 2 320	Wohlers 1 150	Jones 1 150
Wardimer 6 140 21	H. C. Remington 6 160	Jasper M Gandy 5 320	D Heaton 4 160	GW Rosser 4 160	C E La Rue 3 320	Joseph Kolacny 2 320	W W Witham 1 150	PD Hudson 1 150	
James Yarger 7 640	Mark A Schutz 8 400	James Yarger 9 400	Albert G Warren 10 320	H D Shoop 11 160	H D Shoop 11 160	D Heaton 11 160	Joseph Kolacny 12 320	PD Hudson 12 160	Dietrich 12 160
Mary J W 18 160	McDougal 18 160	Geo A McClelland 17 320	Jasper Flice 17 160	H D Shoop 16 160	School Land 16 160	Mrs Alanzo Friseur 15 640	Aaron Wells 14 320	Aaron Wells 13 160	W M Hartwig 13 320
Mary S 3 160	Geo A 3 160	Geo A McClelland 17 320	Jasper Flice 17 160	M E Gandy 16 160	H D Shoop 16 160	Mrs Alanzo Friseur 15 640	Geo A Carter 14 160	Jonathan Collins 14 160	Charles Murray 13 160
Geo A McClelland 19 160	Henry Bickert 20 160	C D Jones 20 160	Laura Auer 21 160	I N Goings 21 160	Sarah F Gilmon 22 160	C J Nailman 22 160	C C Scoville 23 160	Adam Wagner 23 160	R D Hartwig 24 160
W R Whitten 3 160	John C Noff 3 160	A E Nass 3 160	H Wagoner 3 160	I N Goings 21 160	Robert C Vance 22 320	Geo A Carter 23 160	Geo A Carter 23 160	Richard D Hartwig 24 320	
W R Townsend 30 160	W R Townsend 29 160	H P Linn 29 160	B F Yost 28 160	Chas E Hampton 28 160	Irene Dauley 27 160	Albert Bender 27 160	James F Cook 26 160	Geo A Carter 26 160	Henry C Miller 25 160
Oscar Barton 4 160	Michael McCaffrey 4 160	Geo B Moore 4 160	Emery C Nass 4 160	Emery C Warren 4 160	Geo Gabriel 4 160	Elyette Cook 4 160	James H Goings 4 160	James H Goings 4 160	August Stroberg 4 160
Smith Bros 31 160	Grace Crist 31 160	John A Swanson 32 320	Andrew Engstrom 32 160	F Anawald 33 160	J D Fricken 33 160	Ira Trueblood 34 160	Joseph Arnup 34 160	Chester Tollefson 35 160	Henry C Miller 36 200
Andrew Adams 4 160	David Wolf 4 160	John A Swanson 32 320	Peter Emig 32 160	D J Horton 33 160	Eart Trueblood 34 160	L A Golden 34 160	W W Witham 35 320	Wallace Tupper 36 160	Linda Tipper 36 160



MAP OF
TOWNSHIP 9 S RANGE 41 W
 Scale 1/8" = 1/2 MILE.

OF THE 6TH P. M.

6 Ben Jones 160	5 Francis Smith 160	4 P. Marax 160	3 Andrew J. Brown 160	2 Isaac P. Bechtel 160	1 Isaac P. Bechtel 160
7 John N. Eagan 160	8 Mary L. Everett 160	9 Charles Alan 160	10 Leona Mc Dermott 160	11 D. H. Long 160	12 Samuel V. Adams 160
18 J. E. Smith 160	17 A. B. Dewey 160	16 E. Omslow 160	15 Charles E. Gibson 160	14 James Sager 160	13 James Sawyer 160
19 Charles Gibson 160	20 Irene L. Smith 160	21 Mrs. C. Mc Intyre 160	22 John Shuy 160	23 John B. Hagaman 160	24 George Hayden 160
30 H. C. Livingston 160	29 American Investment Co. 160	28 Charles Korman 160	27 C. W. Allen 160	26 S. W. Gaylord 160	25 A. D. Brown 160
31 John I. Lane 160	32 George E. York 160	33 George M. Hallay 160	34 Matilda Quicks 160	35 James B. Moore 160	36 T. A. Stevenson 160

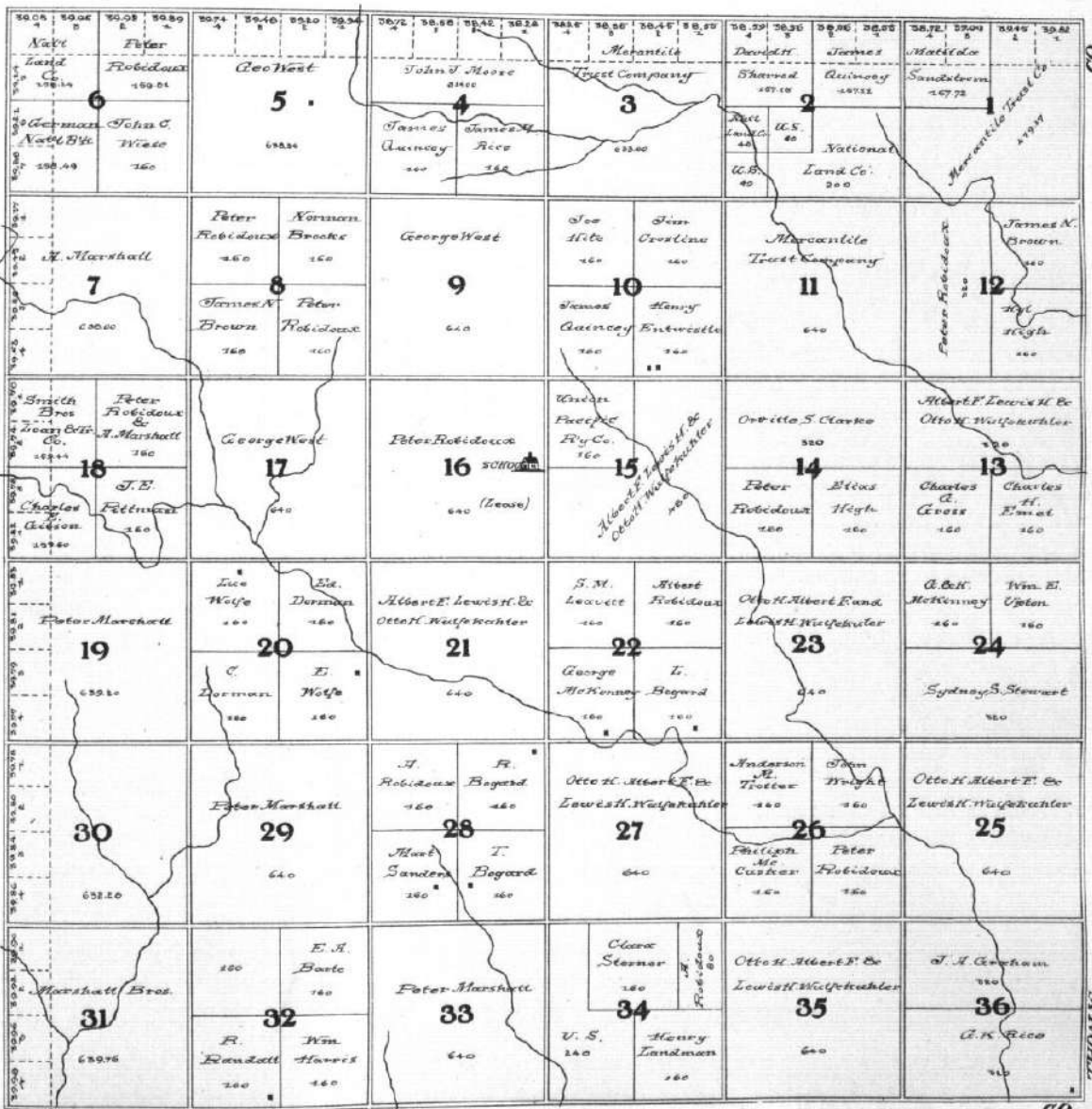


MAP OF

TOWNSHIP 10 S RANGE 37 W

Scale 1/4 inch = 1 Mile.

OF THE 6TH P. M.



WALLACE

CO. & LOGAN

CO.

THOMAS

MAP OF
TOWNSHIP 10 S RANGE 38 W

Scale 1/4 inch equal 1 Mile.

OF THE 6TH P. M.

<p>40.18 40.20 40.22 40.24</p> <p><i>L. E.</i></p> <p>40.26 40.28 40.30 40.32</p> <p>40.34 40.36 40.38 40.40</p> <p>40.42 40.44 40.46 40.48</p> <p>40.50 40.52 40.54 40.56</p> <p>40.58 40.60 40.62 40.64</p> <p>40.66 40.68 40.70 40.72</p> <p>40.74 40.76 40.78 40.80</p> <p>40.82 40.84 40.86 40.88</p> <p>40.90 40.92 40.94 40.96</p> <p>40.98 41.00 41.02 41.04</p>	<p>41.06 41.08 41.10 41.12</p> <p><i>C. M.</i></p> <p>41.14 41.16 41.18 41.20</p> <p>41.22 41.24 41.26 41.28</p> <p>41.30 41.32 41.34 41.36</p> <p>41.38 41.40 41.42 41.44</p> <p>41.46 41.48 41.50 41.52</p> <p>41.54 41.56 41.58 41.60</p> <p>41.62 41.64 41.66 41.68</p> <p>41.70 41.72 41.74 41.76</p> <p>41.78 41.80 41.82 41.84</p> <p>41.86 41.88 41.90 41.92</p> <p>41.94 41.96 41.98 42.00</p>	<p>42.02 42.04 42.06 42.08</p> <p><i>Catharina</i></p> <p>42.10 42.12 42.14 42.16</p> <p>42.18 42.20 42.22 42.24</p> <p>42.26 42.28 42.30 42.32</p> <p>42.34 42.36 42.38 42.40</p> <p>42.42 42.44 42.46 42.48</p> <p>42.50 42.52 42.54 42.56</p> <p>42.58 42.60 42.62 42.64</p> <p>42.66 42.68 42.70 42.72</p> <p>42.74 42.76 42.78 42.80</p> <p>42.82 42.84 42.86 42.88</p> <p>42.90 42.92 42.94 42.96</p> <p>42.98 43.00 43.02 43.04</p>	<p>43.06 43.08 43.10 43.12</p> <p><i>W.K.</i></p> <p>43.14 43.16 43.18 43.20</p> <p>43.22 43.24 43.26 43.28</p> <p>43.30 43.32 43.34 43.36</p> <p>43.38 43.40 43.42 43.44</p> <p>43.46 43.48 43.50 43.52</p> <p>43.54 43.56 43.58 43.60</p> <p>43.62 43.64 43.66 43.68</p> <p>43.70 43.72 43.74 43.76</p> <p>43.78 43.80 43.82 43.84</p> <p>43.86 43.88 43.90 43.92</p> <p>43.94 43.96 43.98 44.00</p>	<p>44.02 44.04 44.06 44.08</p> <p><i>Menankito</i></p> <p>44.10 44.12 44.14 44.16</p> <p>44.18 44.20 44.22 44.24</p> <p>44.26 44.28 44.30 44.32</p> <p>44.34 44.36 44.38 44.40</p> <p>44.42 44.44 44.46 44.48</p> <p>44.50 44.52 44.54 44.56</p> <p>44.58 44.60 44.62 44.64</p> <p>44.66 44.68 44.70 44.72</p> <p>44.74 44.76 44.78 44.80</p> <p>44.82 44.84 44.86 44.88</p> <p>44.90 44.92 44.94 44.96</p> <p>44.98 45.00 45.02 45.04</p>	<p>45.06 45.08 45.10 45.12</p> <p><i>Alcey</i></p> <p>45.14 45.16 45.18 45.20</p> <p>45.22 45.24 45.26 45.28</p> <p>45.30 45.32 45.34 45.36</p> <p>45.38 45.40 45.42 45.44</p> <p>45.46 45.48 45.50 45.52</p> <p>45.54 45.56 45.58 45.60</p> <p>45.62 45.64 45.66 45.68</p> <p>45.70 45.72 45.74 45.76</p> <p>45.78 45.80 45.82 45.84</p> <p>45.86 45.88 45.90 45.92</p> <p>45.94 45.96 45.98 46.00</p>	<p>46.02 46.04 46.06 46.08</p> <p><i>Walter</i></p> <p>46.10 46.12 46.14 46.16</p> <p>46.18 46.20 46.22 46.24</p> <p>46.26 46.28 46.30 46.32</p> <p>46.34 46.36 46.38 46.40</p> <p>46.42 46.44 46.46 46.48</p> <p>46.50 46.52 46.54 46.56</p> <p>46.58 46.60 46.62 46.64</p> <p>46.66 46.68 46.70 46.72</p> <p>46.74 46.76 46.78 46.80</p> <p>46.82 46.84 46.86 46.88</p> <p>46.90 46.92 46.94 46.96</p> <p>46.98 47.00 47.02 47.04</p>	<p>47.06 47.08 47.10 47.12</p> <p><i>Geo. A. West</i></p> <p>47.14 47.16 47.18 47.20</p> <p>47.22 47.24 47.26 47.28</p> <p>47.30 47.32 47.34 47.36</p> <p>47.38 47.40 47.42 47.44</p> <p>47.46 47.48 47.50 47.52</p> <p>47.54 47.56 47.58 47.60</p> <p>47.62 47.64 47.66 47.68</p> <p>47.70 47.72 47.74 47.76</p> <p>47.78 47.80 47.82 47.84</p> <p>47.86 47.88 47.90 47.92</p> <p>47.94 47.96 47.98 48.00</p>
<p>6</p> <p><i>Hortator</i></p> <p>210.55</p> <p><i>Wheeler</i></p> <p><i>David</i></p> <p><i>Hortator</i></p> <p>150.46</p> <p><i>CHAS. J. WALLACE</i></p>	<p>5</p> <p><i>Nequette</i></p> <p>640.88</p>	<p>4</p> <p><i>King</i></p> <p>150.10</p> <p><i>Nancy</i></p> <p>160</p> <p><i>Hortator</i></p> <p>160</p>	<p>3</p> <p><i>Trust Co.</i></p> <p>656.00</p>	<p>2</p> <p><i>Bees</i></p> <p>150.44</p> <p><i>Henry</i></p> <p>160</p> <p><i>Rees</i></p> <p>160</p>	<p>1</p> <p><i>Geo. C. & C. W. West</i></p> <p>160.99</p>		
<p>7</p> <p><i>A. T. Tipton</i></p> <p>625.50</p>	<p>8</p> <p><i>Olever T. Baker</i></p> <p>160</p> <p><i>E. W. Lewis</i></p> <p>160</p> <p><i>K. Noddy</i></p> <p>160</p>	<p>9</p> <p><i>Peter Robidoux & A. Marshall</i></p> <p>640</p>	<p>10</p> <p><i>Peter Robidoux & A. Marshall</i></p> <p>160</p> <p><i>Smith Bros</i></p> <p><i>Low-Trust Co.</i></p> <p>160</p> <p><i>Anna P. Robidoux & King</i></p> <p>160</p> <p><i>A. Marshall</i></p> <p>160</p>	<p>11</p> <p><i>Peter Robidoux & A. Marshall</i></p> <p>640</p>	<p>12</p> <p><i>P. Robidoux & A. Marshall</i></p> <p>160</p> <p><i>Peter Robidoux</i></p> <p>160</p> <p><i>Torrey Everett</i></p> <p>160</p> <p><i>E. A. Sturwick</i></p> <p>160</p>		
<p>18</p> <p><i>E. W. Lewis</i></p> <p>160.70</p> <p><i>H. O. Martin</i></p> <p>160</p>	<p>17</p> <p><i>J. B. Barrett</i></p> <p>640</p>	<p>16</p> <p><i>Ida M. Van Ritten</i></p> <p>160</p> <p><i>E. Beecher</i></p> <p>160</p> <p><i>Florence Van Ritten</i></p> <p>160</p> <p><i>M. L. Chandler</i></p> <p>160</p>	<p>15</p> <p><i>P. Robidoux & A. Marshall</i></p> <p>160</p> <p><i>P. Robidoux & A. Marshall</i></p> <p>160</p>	<p>14</p> <p><i>Esther Smith</i></p> <p>160</p> <p><i>C. McManis</i></p> <p>160</p> <p><i>P. Robidoux & A. Marshall</i></p> <p>160</p>	<p>13</p> <p><i>Peter Robidoux & A. Marshall</i></p> <p>640</p>		
<p>19</p> <p><i>W. H. & C. J. Wallace</i></p> <p>160</p>	<p>20</p> <p><i>A. M. Martin Est.</i></p> <p>160</p> <p><i>M. L. & I. Chandler</i></p> <p>160</p> <p><i>M. L. Wilbace</i></p> <p>160</p> <p><i>T. B. Barrett</i></p> <p>160</p>	<p>21</p> <p><i>M. L. & W. H. Chandler</i></p> <p>640</p>	<p>22</p> <p><i>Wm. H. Chandler</i></p> <p>160</p> <p><i>I. Chandler</i></p> <p>160</p> <p><i>M. L. Taylor</i></p> <p>160</p> <p><i>M. L. Chandler</i></p> <p>160</p>	<p>23</p> <p><i>Peter Robidoux & A. Marshall</i></p> <p>640</p>	<p>24</p> <p><i>P. Robidoux & A. Marshall</i></p> <p>160</p> <p><i>John Howard</i></p> <p>160</p> <p><i>Jacobs</i></p> <p>160</p>		
<p>30</p> <p><i>Wm. H. Connolly</i></p> <p>160</p> <p><i>P. Robidoux & A. Marshall</i></p> <p>150.72</p> <p><i>Henry Robidoux</i></p> <p>159.09</p>	<p>29</p> <p><i>P. Robidoux & A. Marshall</i></p> <p>640</p>	<p>28</p> <p><i>M. L. & W. H. Chandler</i></p> <p>160</p> <p><i>M. L. Chandler</i></p> <p>160</p>	<p>27</p> <p><i>M. L. & W. H. Chandler</i></p> <p>640</p>	<p>26</p> <p><i>P. Robidoux & A. Marshall</i></p> <p>160</p> <p><i>D. B. Marshall</i></p> <p>160</p> <p><i>W. D. Marshall</i></p> <p>160</p> <p><i>P. Robidoux & A. Marshall</i></p> <p>160</p>	<p>25</p> <p><i>P. Robidoux & A. Marshall</i></p> <p>640</p>		
<p>31</p> <p><i>P. Robidoux & A. Marshall</i></p> <p>631.55</p>	<p>32</p> <p><i>M. L. Chandler</i></p> <p>160</p>	<p>33</p> <p><i>M. L. & W. H. Chandler</i></p> <p>640</p>	<p>34</p> <p><i>J. Chandler</i></p> <p>160</p> <p><i>G. Edward</i></p> <p>160</p> <p><i>Chas. Lacher</i></p> <p>160</p>	<p>35</p> <p><i>P. Robidoux & A. Marshall</i></p> <p>640</p>	<p>36</p> <p><i>L. F. Dayton</i></p> <p>160</p> <p><i>Peter Robidoux & A. Marshall</i></p> <p>160</p>		

WALLACE

C.O.

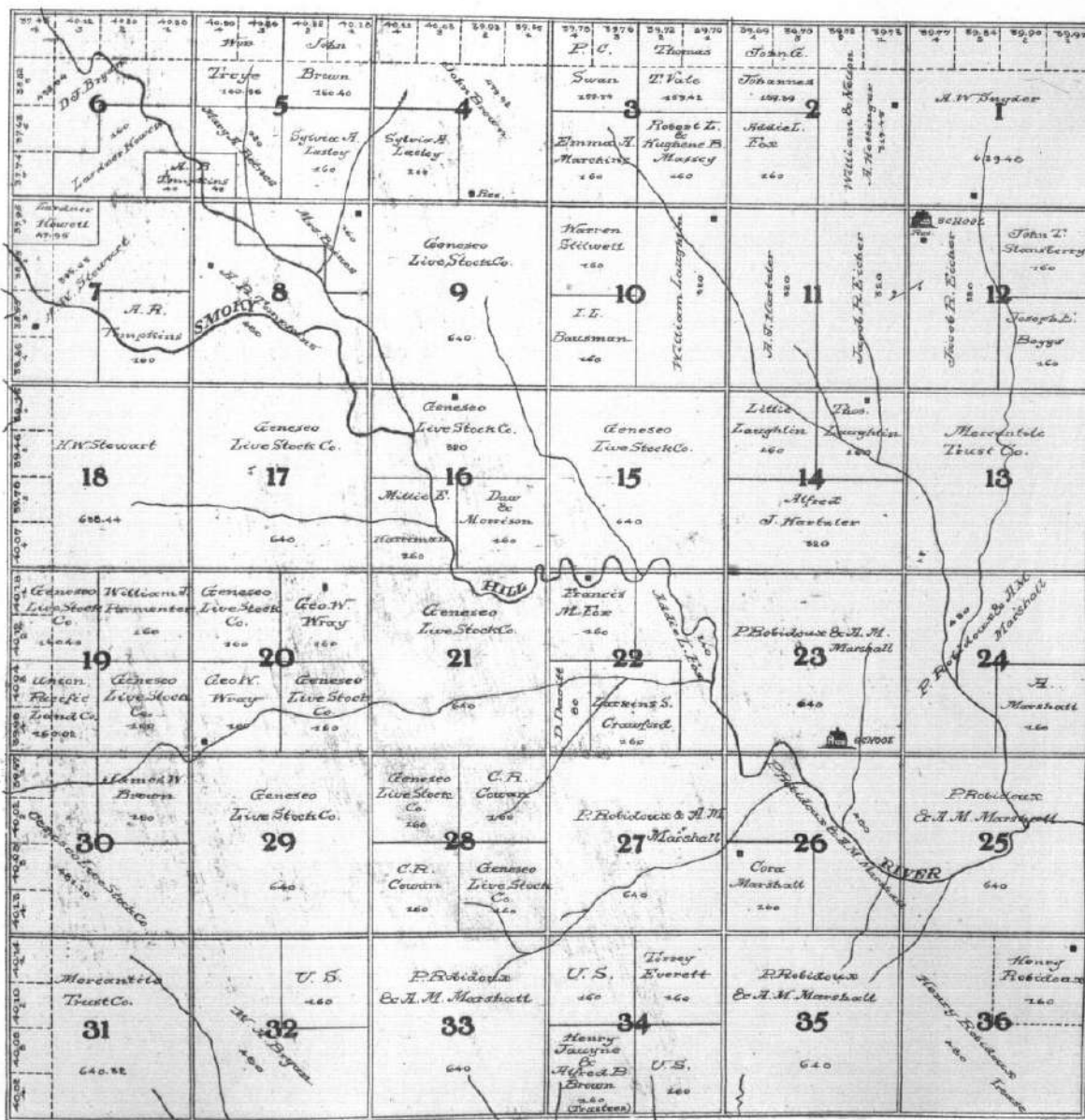


MAP OF

TOWNSHIP 10 S RANGE 39 W

Scale 1/8 inch to 1 mile.

OF THE 6TH P. M.



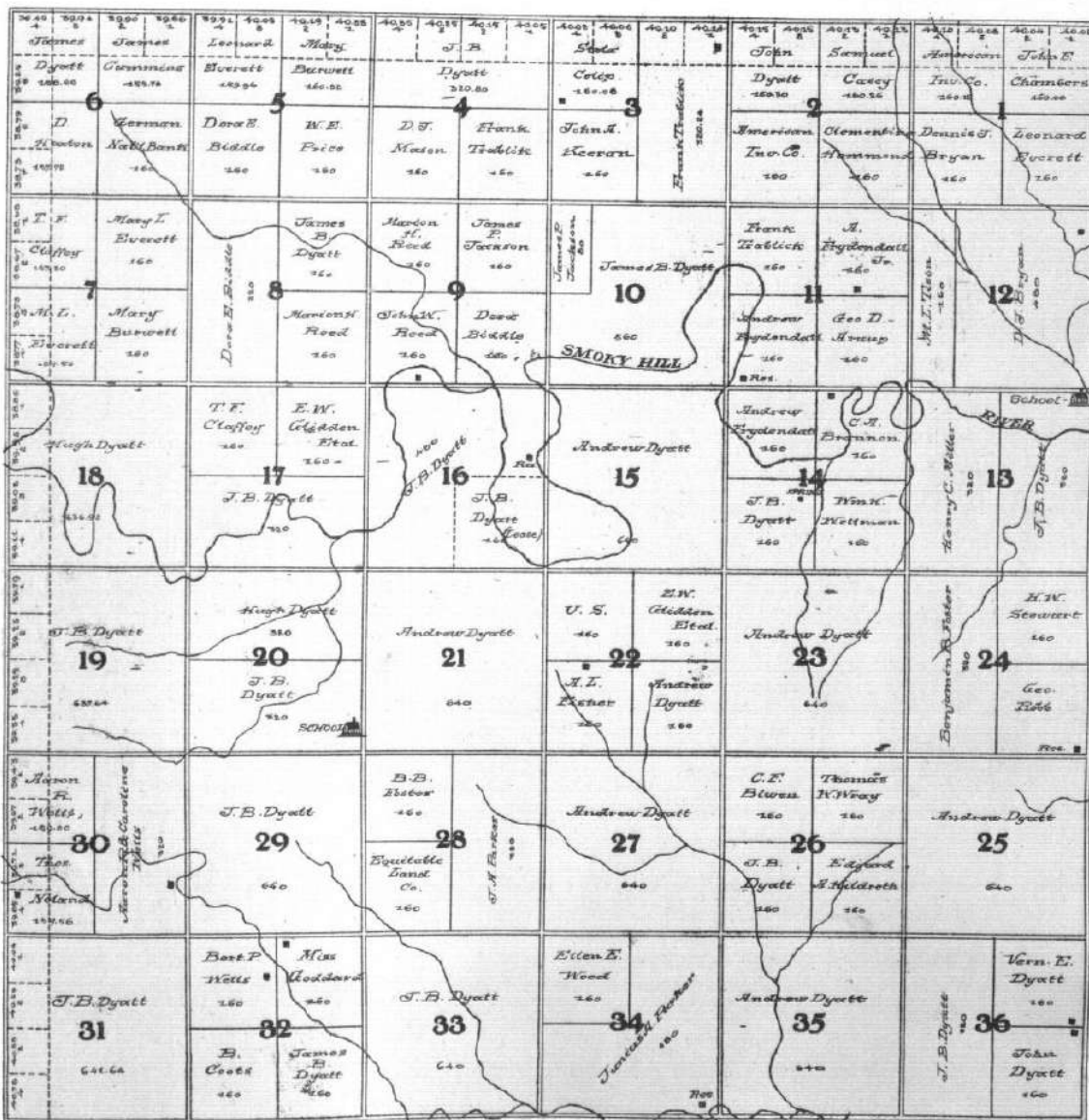
WALLACE

CO.

MAP OF
TOWNSHIP 10'S RANGE 40 W

Scale 1/4" (vertical) 1 Mile.

OF THE 6TH P. M.





MAP OF
TOWNSHIP 10 S RANGE 41 W
 OF THE 6TH P. M.
 Scale 1/4" = 1/2 Mile.

38 92 Chas E 137 85	40 12 L A 160 70	40 27 H P 160 70	40 43 L A 161 30	40 76 Ettie 161 42	40 88 C P 161 04	40 95 G W 160 31	40 97 2 1 160 97	40 99 4 3 160	40 64 2 5 7 160 85	40 35 John W 160 60	40 25 2 1 160 20	40 09 1 1 160 20
Wagon Brown 137 85	B M Petersca 160	Geo T Hamlin 320	Smith Bros Loan & Tr Co 160	Ettie Sapp 160	Ettie Sapp 160	American Investment Co 160	James B Moore 160	Fierman Locke 160	G W Gottschall 160	John W Moore 160 20		
1 B M Peterson 160	School Geo T Hamlin 160	Taylor Bros 160	Taylor Brothers 640	Ettie Taylor 160	James N Brown 160	James B Moore 320	James B Moore 160	James B Moore 160	James B Moore 160			
2 Geo T Hamlin 158 44	Geo T Hamlin 160	Chas E Gibson 160		James N Brown 160	Taylor Bros 160	Dyett Brothers 320						
3 D D Wright & Tysseing 318 91	Geo T Hamlin 160	G M Faline 160	Taylor Bros 640	Ettie Sapp 160	Smith Bros Loan & Trust Co 160	A E Wolfe 120	Dyett Brothers 160	James B Moore 160	James B Warren Gayer 160			
4 Wm E Myer 158 41	Mercantile Trust Co 320	Mercantile Trust Co 320		Mercantile Trust Co 160	US 160	Peter H Doerfer 40	Peter H Doerfer 40	Mercantile Co. 320	Mercantile Co. 320			
5 L A Golden 160	Lettruck Moore 160	Chas P Faline 160	L A Golden 640	US 40	Peter Doerfer 120	Geo W Swindler 540	Geo W Swindler 540	J E Moore 160	John D Dewitt 160			
6 E W Brownell 158 20	G L A Magrath 160	L A Golden 160		US 160	US 160			Smith Bros Loan & Trust Co 160	F D De Witt 160			
7 L A Golden 160	L A Golden 640			L A Golden 160	Mercantile Trust Co 480	A S Ormsby 160	Geo F Tulley 160	Mercantile Trust Co 640	Mercantile Trust Co 640			
8 L A Golden 618 60	F W Watts 160	F B Watts 160	Mercantile Trust Compy 640	John Carson 160	Philip Binder- wagle 160	J E Moore 160	J E Henry 160					
9 L A Golden 618 60	F W Watts 160	F B Watts 160		John Carson 160	Philip Binder- wagle 160	J E Moore 160	J E Henry 160					
10 L A Golden 618 60	F W Watts 160	F B Watts 160		John Carson 160	Philip Binder- wagle 160	J E Moore 160	J E Henry 160					
11 L A Golden 618 60	F W Watts 160	F B Watts 160		John Carson 160	Philip Binder- wagle 160	J E Moore 160	J E Henry 160					
12 L A Golden 618 60	F W Watts 160	F B Watts 160		John Carson 160	Philip Binder- wagle 160	J E Moore 160	J E Henry 160					
13 L A Golden 618 60	F W Watts 160	F B Watts 160		John Carson 160	Philip Binder- wagle 160	J E Moore 160	J E Henry 160					
14 L A Golden 618 60	F W Watts 160	F B Watts 160		John Carson 160	Philip Binder- wagle 160	J E Moore 160	J E Henry 160					
15 L A Golden 618 60	F W Watts 160	F B Watts 160		John Carson 160	Philip Binder- wagle 160	J E Moore 160	J E Henry 160					
16 L A Golden 618 60	F W Watts 160	F B Watts 160		John Carson 160	Philip Binder- wagle 160	J E Moore 160	J E Henry 160					
17 L A Golden 618 60	F W Watts 160	F B Watts 160		John Carson 160	Philip Binder- wagle 160	J E Moore 160	J E Henry 160					
18 L A Golden 618 60	F W Watts 160	F B Watts 160		John Carson 160	Philip Binder- wagle 160	J E Moore 160	J E Henry 160					
19 L A Golden 618 60	F W Watts 160	F B Watts 160		John Carson 160	Philip Binder- wagle 160	J E Moore 160	J E Henry 160					
20 L A Golden 618 60	F W Watts 160	F B Watts 160		John Carson 160	Philip Binder- wagle 160	J E Moore 160	J E Henry 160					
21 L A Golden 618 60	F W Watts 160	F B Watts 160		John Carson 160	Philip Binder- wagle 160	J E Moore 160	J E Henry 160					
22 L A Golden 618 60	F W Watts 160	F B Watts 160		John Carson 160	Philip Binder- wagle 160	J E Moore 160	J E Henry 160					
23 L A Golden 618 60	F W Watts 160	F B Watts 160		John Carson 160	Philip Binder- wagle 160	J E Moore 160	J E Henry 160					
24 L A Golden 618 60	F W Watts 160	F B Watts 160		John Carson 160	Philip Binder- wagle 160	J E Moore 160	J E Henry 160					
25 L A Golden 618 60	F W Watts 160	F B Watts 160		John Carson 160	Philip Binder- wagle 160	J E Moore 160	J E Henry 160					
26 L A Golden 618 60	F W Watts 160	F B Watts 160		John Carson 160	Philip Binder- wagle 160	J E Moore 160	J E Henry 160					
27 L A Golden 618 60	F W Watts 160	F B Watts 160		John Carson 160	Philip Binder- wagle 160	J E Moore 160	J E Henry 160					
28 L A Golden 618 60	F W Watts 160	F B Watts 160		John Carson 160	Philip Binder- wagle 160	J E Moore 160	J E Henry 160					
29 L A Golden 618 60	F W Watts 160	F B Watts 160		John Carson 160	Philip Binder- wagle 160	J E Moore 160	J E Henry 160					
30 L A Golden 618 60	F W Watts 160	F B Watts 160		John Carson 160	Philip Binder- wagle 160	J E Moore 160	J E Henry 160					
31 L A Golden 618 60	F W Watts 160	F B Watts 160		John Carson 160	Philip Binder- wagle 160	J E Moore 160	J E Henry 160					
32 L A Golden 618 60	F W Watts 160	F B Watts 160		John Carson 160	Philip Binder- wagle 160	J E Moore 160	J E Henry 160					
33 L A Golden 618 60	F W Watts 160	F B Watts 160		John Carson 160	Philip Binder- wagle 160	J E Moore 160	J E Henry 160					
34 L A Golden 618 60	F W Watts 160	F B Watts 160		John Carson 160	Philip Binder- wagle 160	J E Moore 160	J E Henry 160					
35 L A Golden 618 60	F W Watts 160	F B Watts 160		John Carson 160	Philip Binder- wagle 160	J E Moore 160	J E Henry 160					
36 L A Golden 618 60	F W Watts 160	F B Watts 160		John Carson 160	Philip Binder- wagle 160	J E Moore 160	J E Henry 160					

WALLACE

CO.

**MAP OF
TOWNSHIP 10 S RANGE 42 W**

OF THE 6TH R. M.

COLORADO

18

19

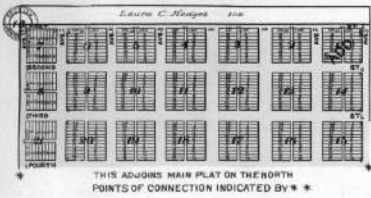
30

STATE OF

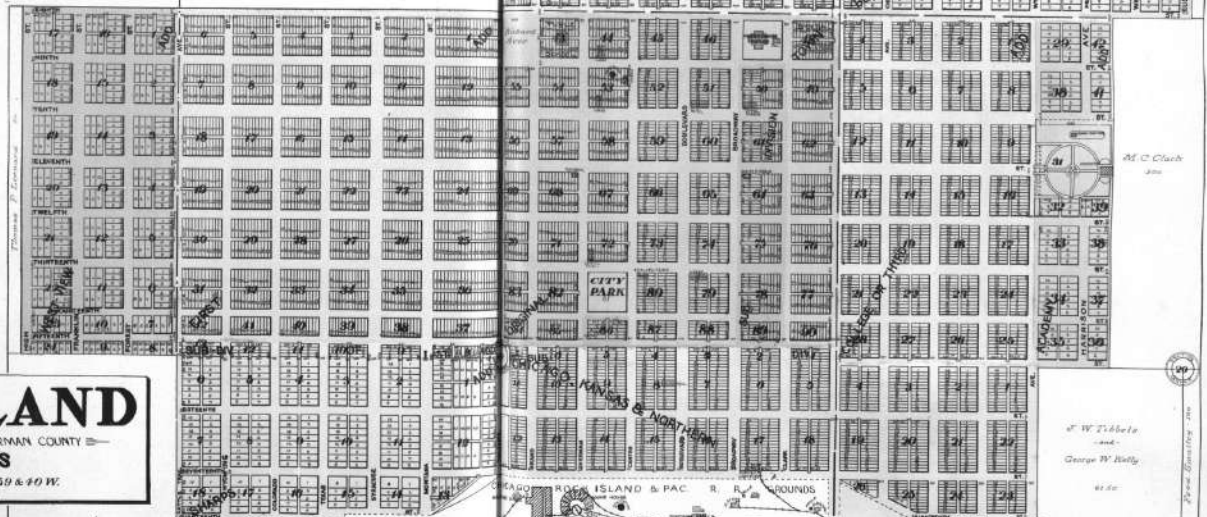
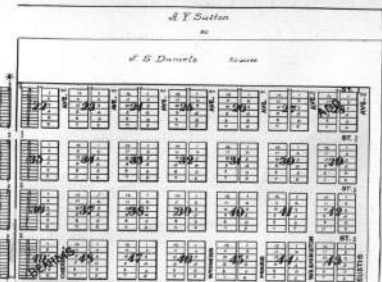
39.17 Smith Bros 159.75	40.07, 40.93 John A. Keenan 160.50	40.82, 40.88 C. F. Blauer 160	40.86, 40.89 Christopher Timm 161.15	40.81, 40.44 Larntner Howell 161.05	40.28, 40.09 Christopher Timm 160.70	40.10, 40.20 Lechard McClure 160.40	40.50, 40.18 G. G. Dittman 160.80	40.74, 40.50 A. G. Darnseil 161.20	40.30, 40.10 L. A. Golden 160.40
5	6	7	8	9	10	11	12	13	14
Chas. E. Gibson 160	J. Hunter 160	James H. Babcock 160	O. W. Pulver 160	Ed. Brazee 160	Chas. W. Brown 160	Jesse A. Van Doren 160	William Fraser 160	J. D. Howard 160	James M. Kindall 160
Fannie L. West 320		Geo W. Pantzer 320		Fred. Notz 320		Fred. Notz 320		Pete Steuwand	
8	9	10	11	12	13	14	15	16	17
Wade Warner 160	Wm. M. Brown 160	Leonard Everett 320	Jacob Doerfler 320	Fred. Notz 160	L. A. Golden 160	Warren Carmichael 160	480	Ernest Notz 320	Heik Notz 160
James Notz 160	Samuel Notz 160	Ernest Notz 320 (Lease)		480	William Fraser 160	Wm. T. Heilbarg 160	J. J. Good 320	Samuel Notz 160	Chas. E. Gibson 160
L. A. Golden 480		L. A. Golden 640		Thomas Benj B Kinahan Foster 160 160		L. A. Golden 640		L. A. Golden 160	
20		21		22		23		24	
James N Brown 100		Mary L. Everett 160		John Pottack 160		L. A. Golden 160		L. A. Golden 160	
L. A. Golden 640		L. A. Golden 640		L. A. Golden 640		L. A. Golden 160		L. A. Golden 160	
29		28		27		26		25	
L. A. Golden 640		Mary L. Everett 160		L. A. Golden 640		L. A. Golden 160		L. A. Golden 640	
L. A. Golden 640		L. A. Golden 640		L. A. Golden 640		U. S. 480		L. A. Golden 640	
32		33		34		35		36	
L. A. Golden 480		L. A. Golden 640		United States 640		L. A. Golden 640		L. A. Golden 640	
U. S. 160		L. A. Golden 640		United States 640		L. A. Golden 640		L. A. Golden 640	

WALLACE

CO.



E. P. Leonard 1884
E. W. Scholten



GOODLAND
 COUNTY SEAT OF SHERMAN COUNTY
 KANSAS
 TWP. 8 S. RANGES 39 & 40 W.
 Scale 1/2" = 1 mile

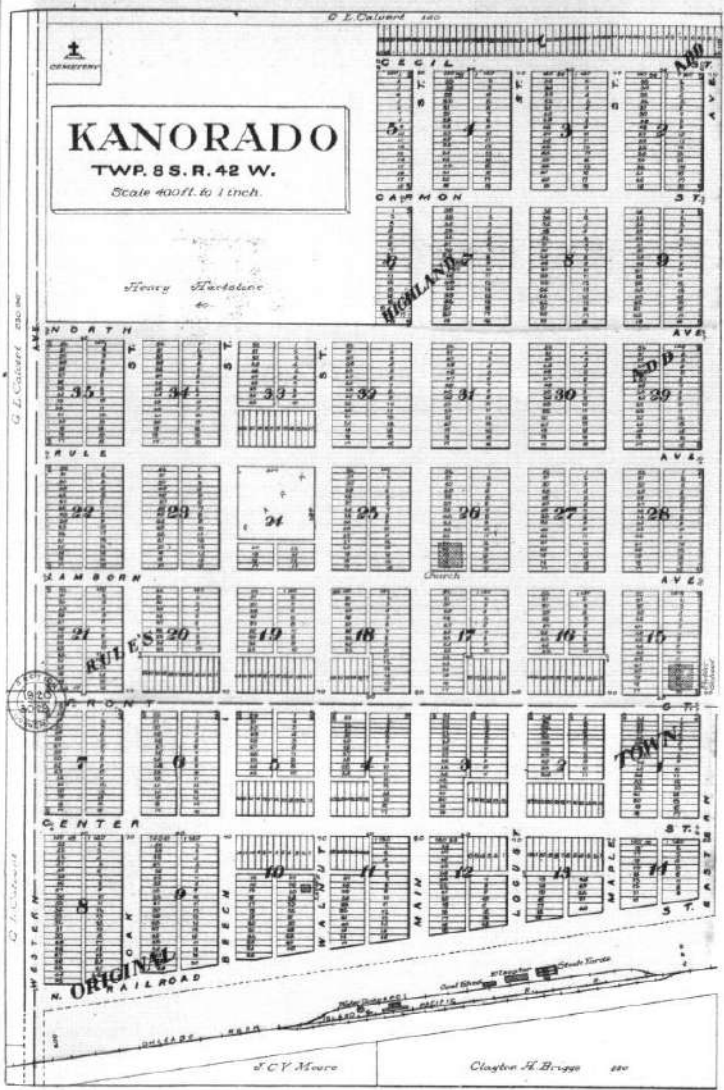


James E. Thomas
O. E. Yeaman

A. C. Clark
W. T. Hinkle
George W. Holly

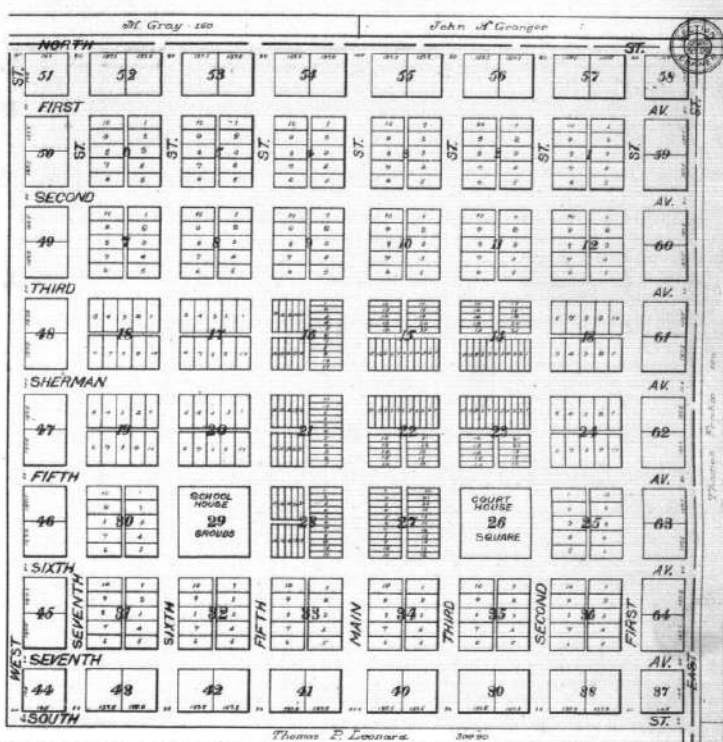
KANORADO

TWP. 8 S. R. 42 W.
Scale 400 ft. to 1 inch.



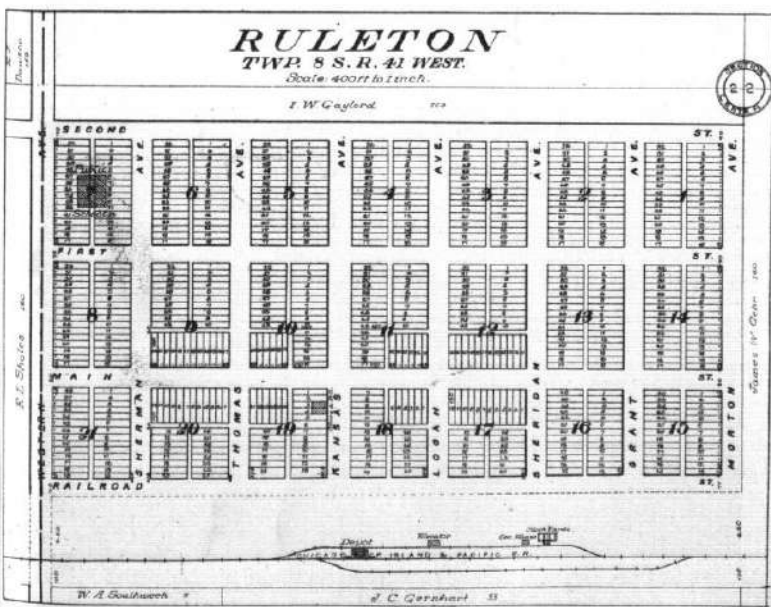
VOLTAIRE

TWP. 7 S. R. 39 W.
Scale 400 ft. to 1 inch.



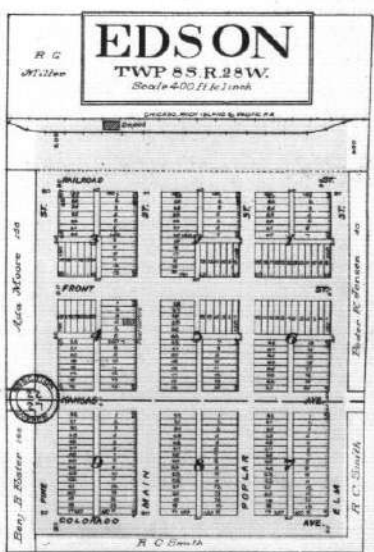
RULETON

TWP. 8 S. R. 41 WEST.
Scale 400 ft. to 1 inch.



EDSON

TWP. 8 S. R. 28 W.
Scale 400 ft. to 1 inch.



OUTLINE MAP OF
SHERMAN COUNTY
 KANSAS

