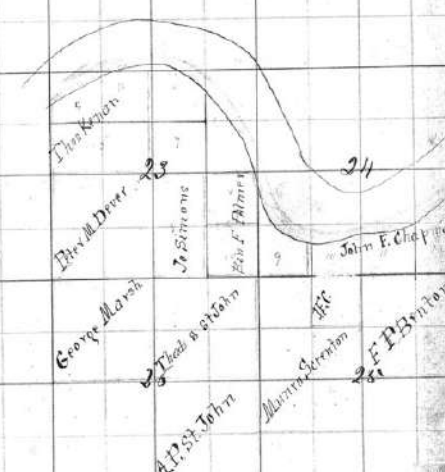
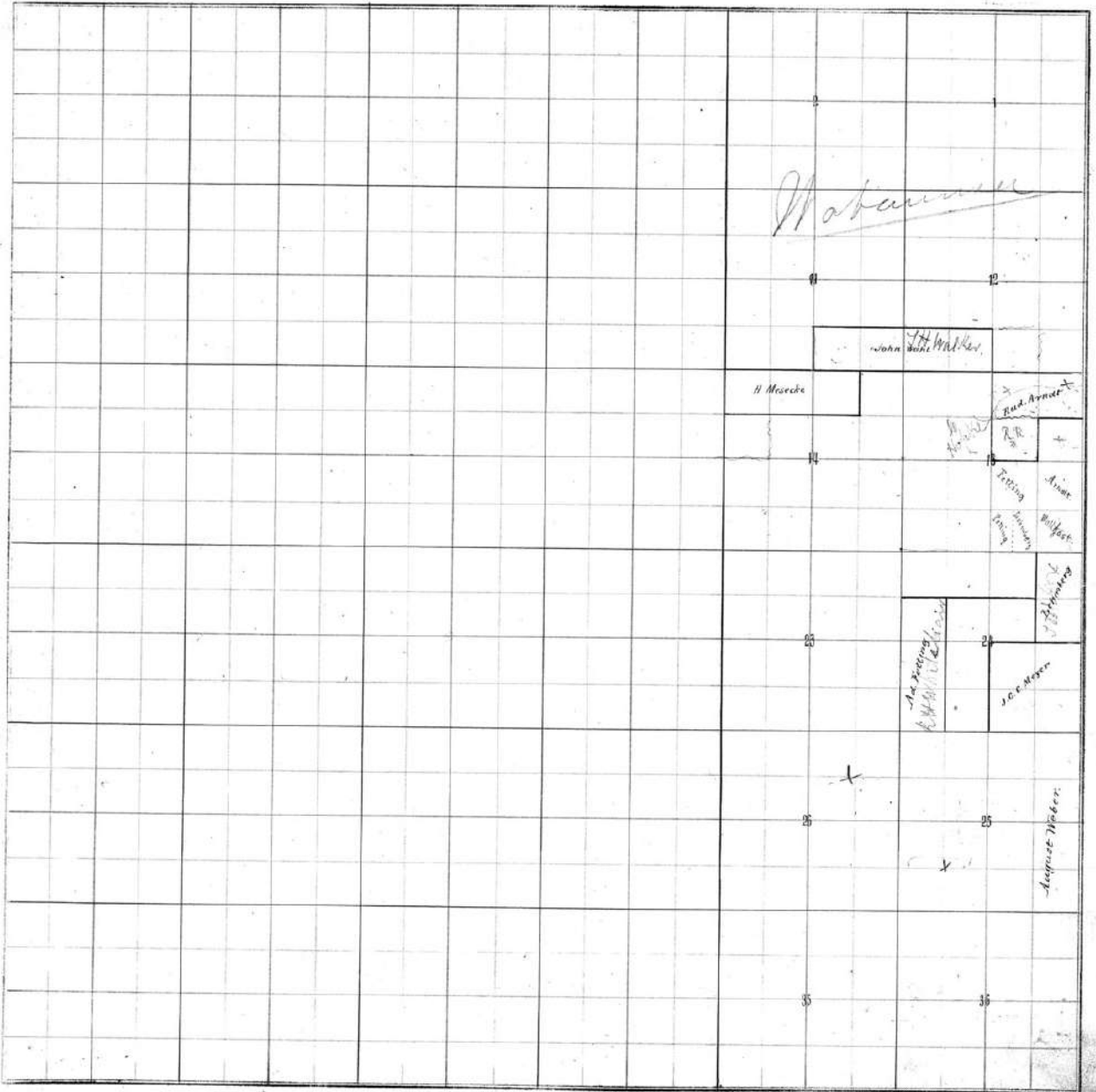


Township No. 10 Range No. 8 of the 6th Principal Meridian.

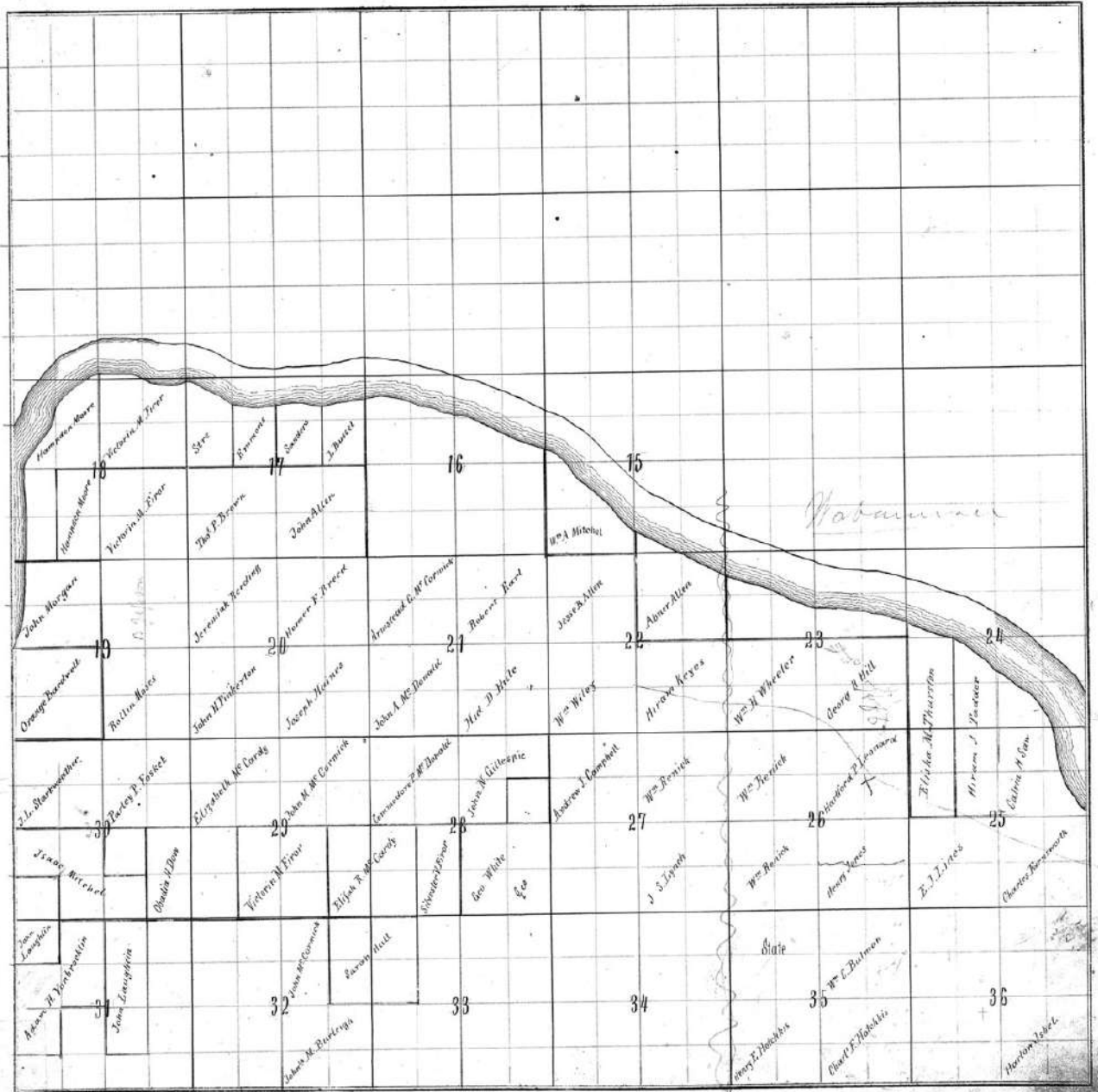
Boonville



Township No. 13 Range No. 8, of the 6th Principal Meridian.



Township No. X Range No. IX of the 6th Principal Meridian.

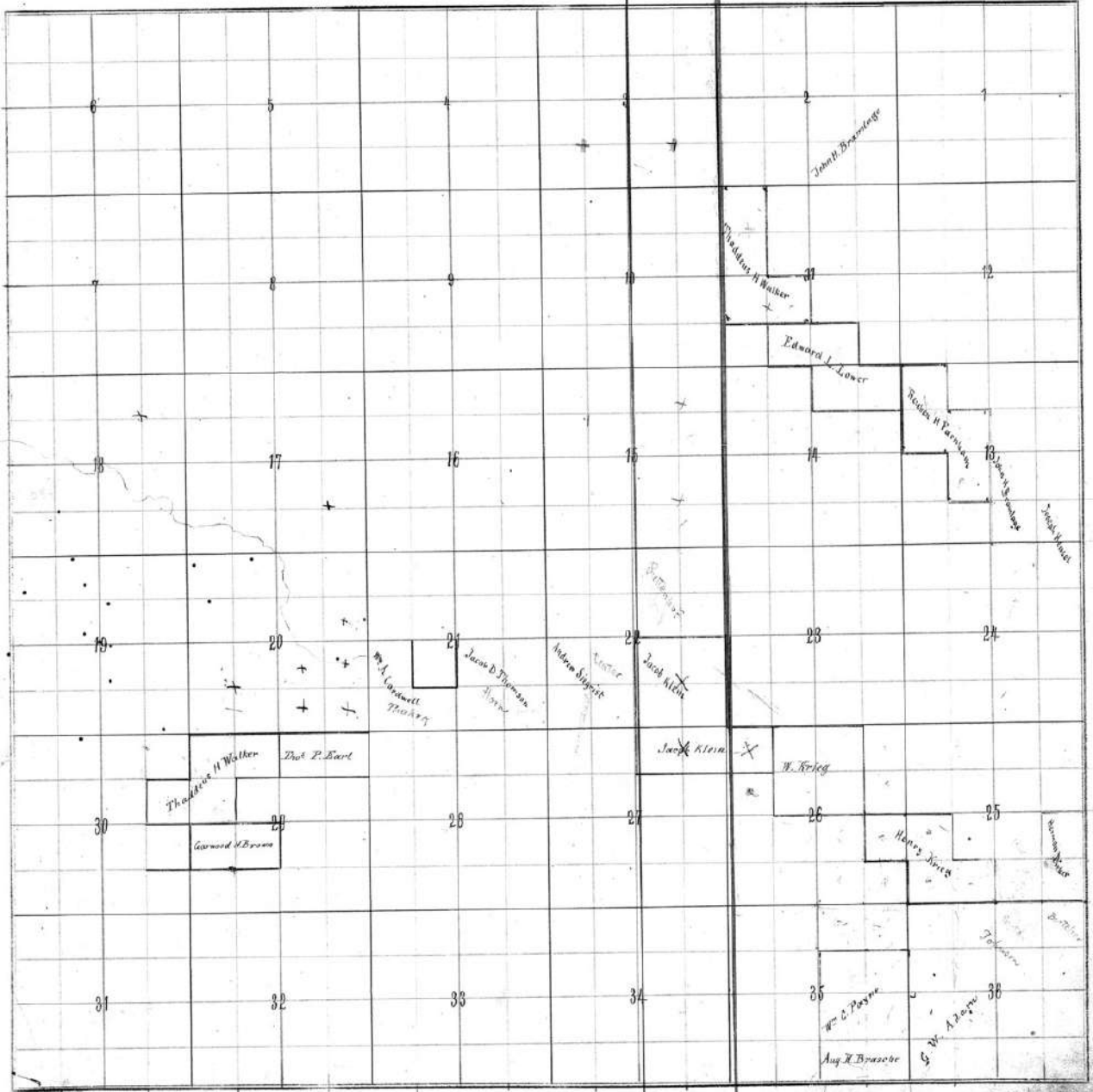


P. x

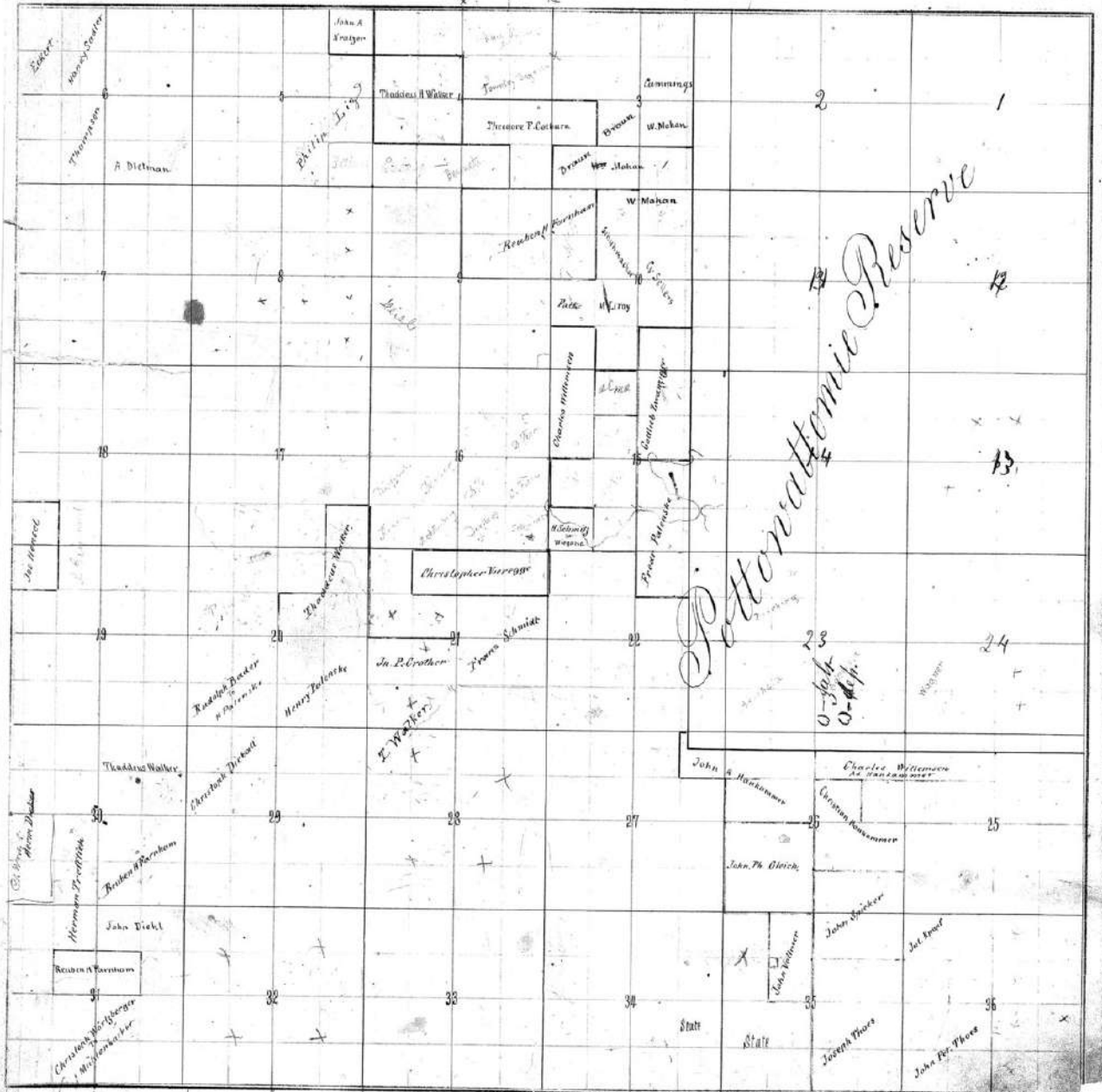
Township No. XI Range No. IX of the 6th Principal Meridian.

W.P. Van Brunt	James Peir	Samuel Johnson	J.H. Pillsbury	Henry Rogers	George Smith	H.M. Simpson	Thos. A. Hodge	James W. Lawrence	Peter O'Brien	L.M. Thomas
Wm. P. Brown	David L. Bates	William B. Powers	Thomas J. Taylor	W.F.A. Simpson	W.F.A. Simpson	W.F.A. Simpson	W.F.A. Simpson	David A. Larkin	Peter O'Brien	L.A. Parker
	Emilie Laker		Edward E. Bowers	W.F.A. Simpson	W.F.A. Simpson	W.F.A. Simpson	Henry B. Smith	Henry B. Smith	Henry B. Smith	
J.W. Thompson		Peter Stearn	David P. Chapman	David M. Adams	Tramway V. Smith	W.F.A. Simpson	W.F.A. Simpson	Henry B. Smith	Henry B. Smith	W. W. Burman
							George H. Hill	John P. Cothran		
								John Platt		Abner
18		17								
									Chas. May	
										Gladden
19		20		21		22		23		24
							Wm. C. Miller		Alexander M. Gentry	
									Henry Nicks	W. P. Morale
30		29		28		27		26		25
										W. P. Morale
31		32		33		34		35		36

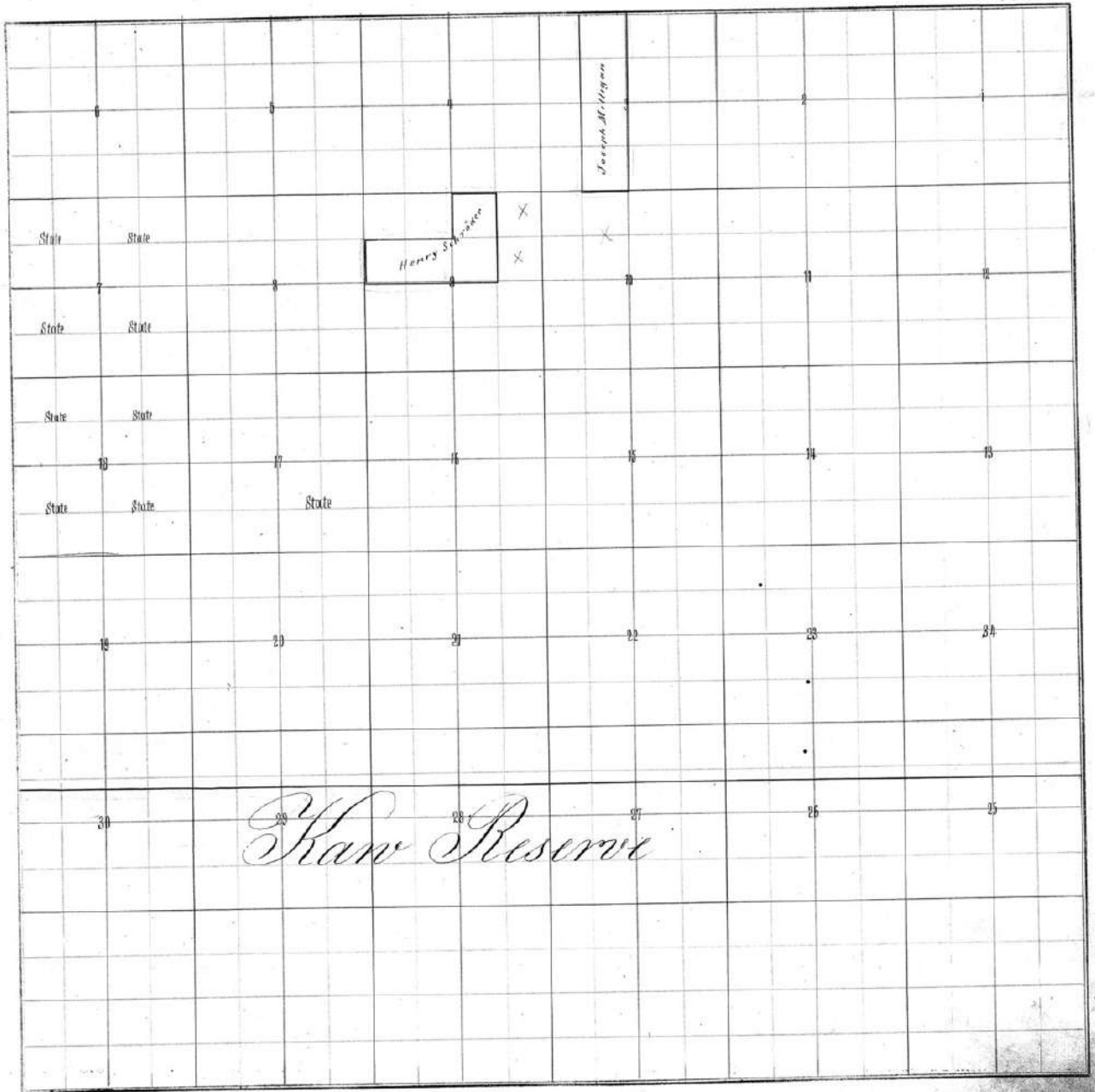
Township No. XII Range No. IX of the 6th Principal Meridian.



Township No. XII Range No. X of the 6th Principal Meridian.

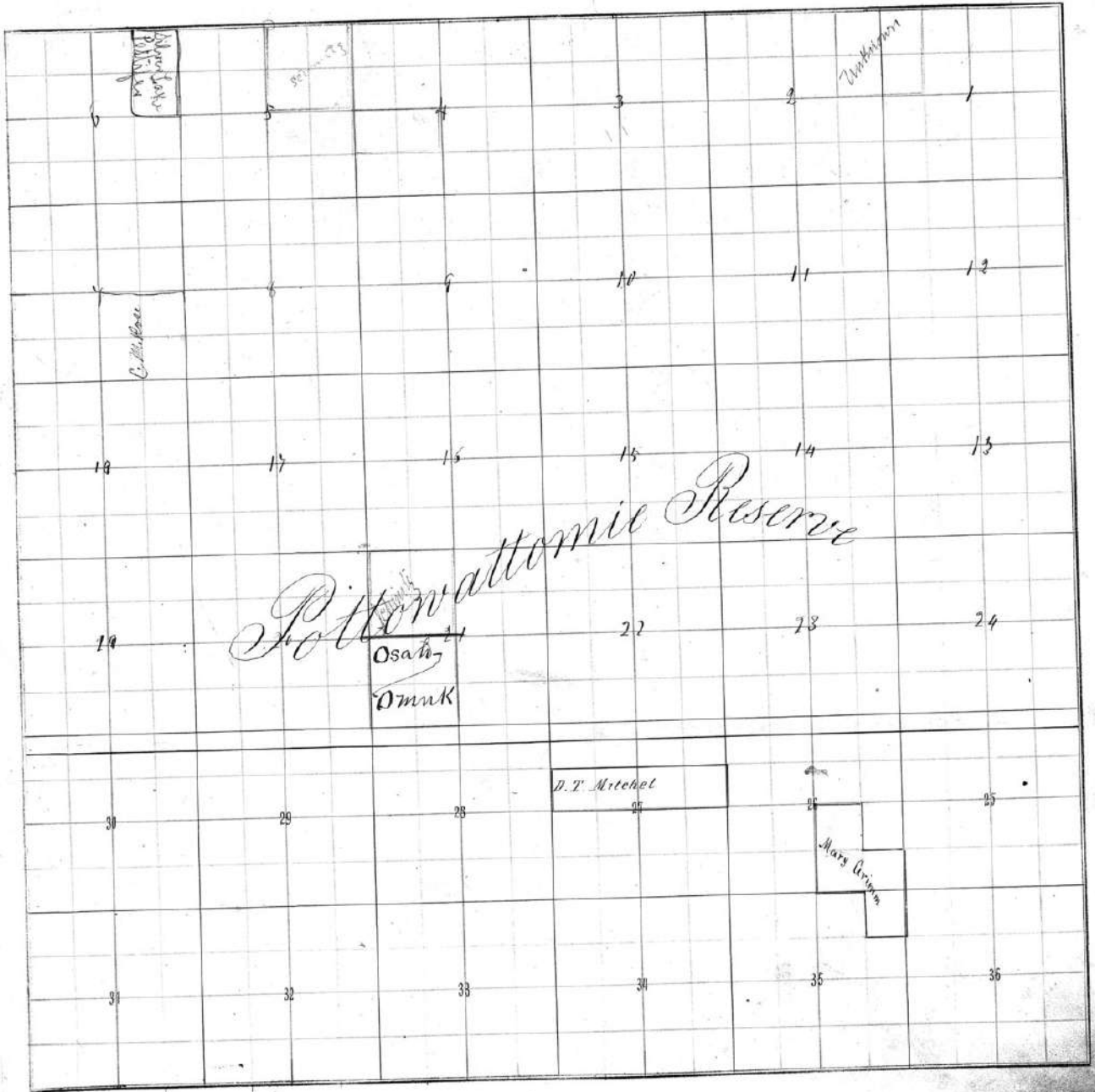


Township No. XIV Range No. X of the 6th Principal Meridian.

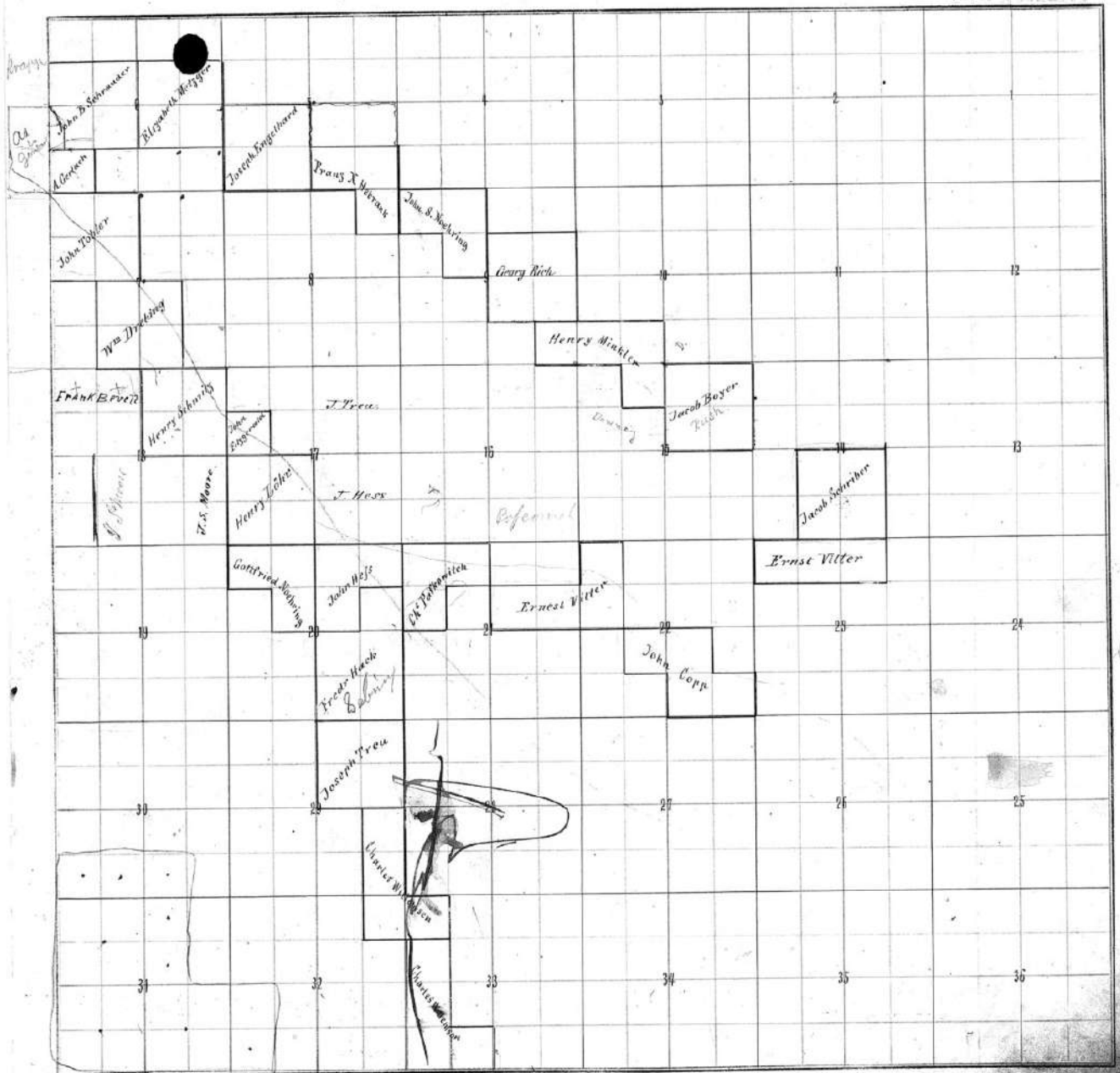


25

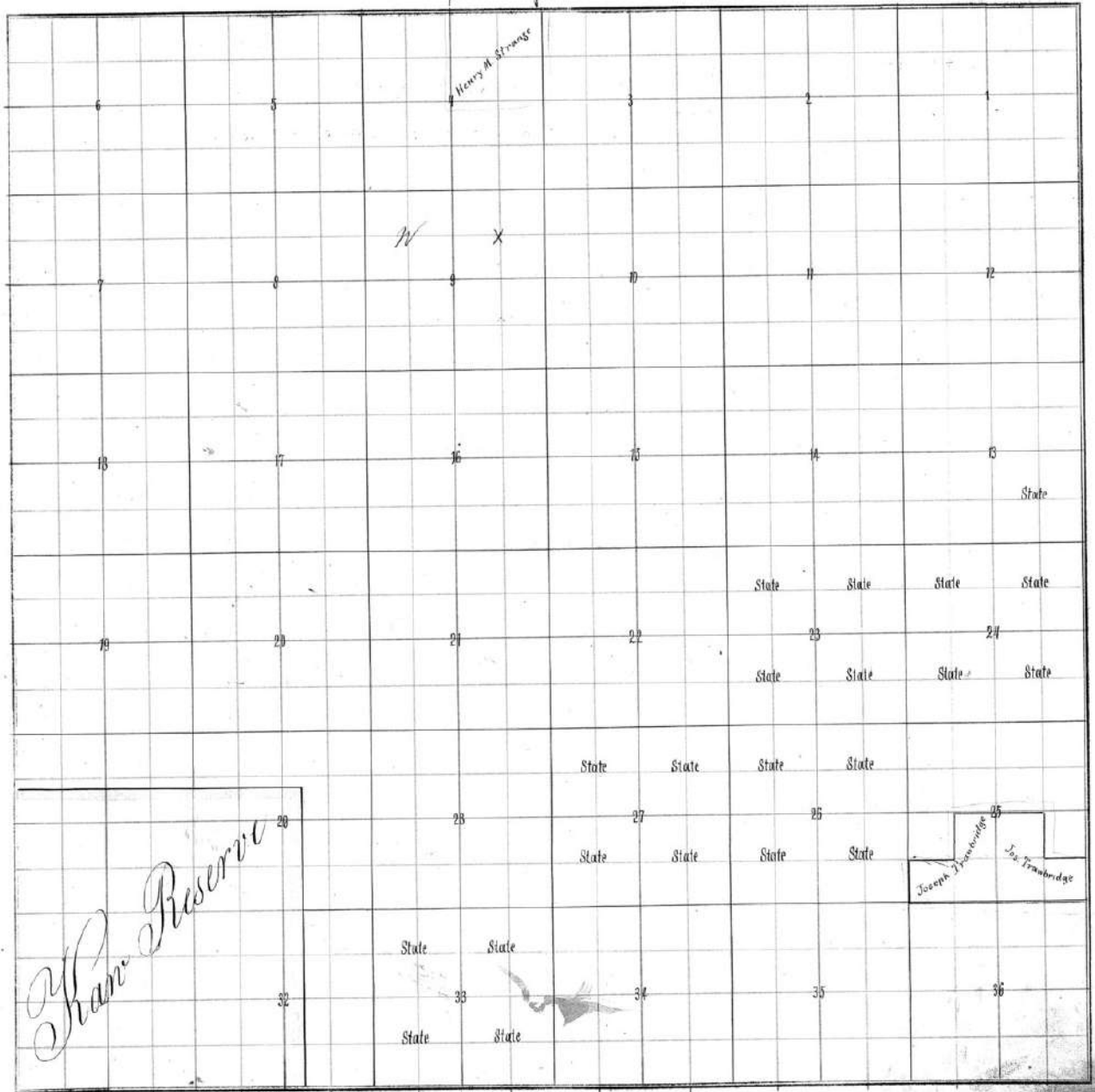
Township No. XII Range No. XI of the 6th Principal Meridian.



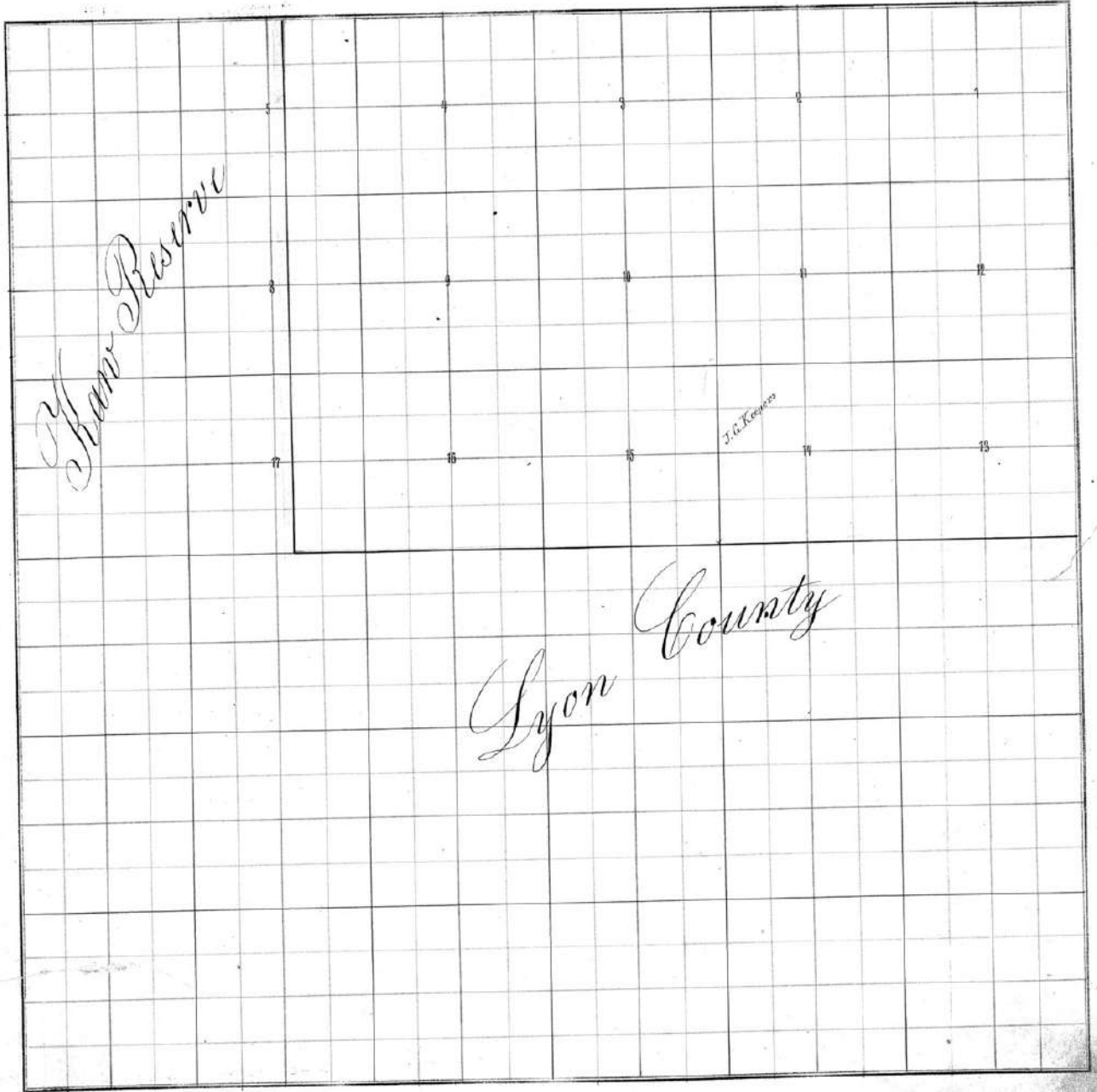
Township No. XIII Range No. XI of the 6th Principal Meridian.



Township No. XIV Range No. XI of the 6th Principal Meridian.



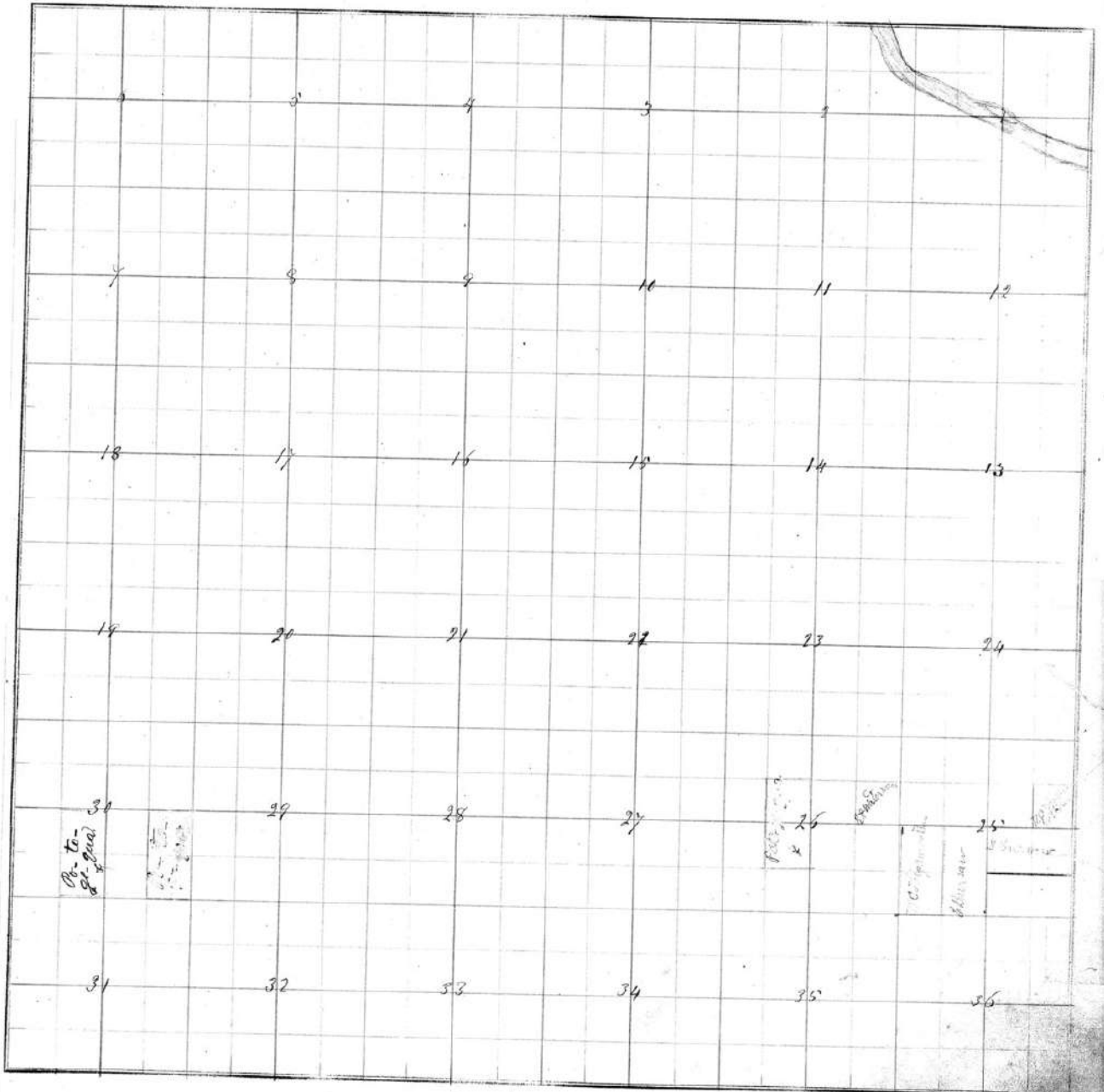
Township No. XV Range No. XI of the 6th Principal Meridian.



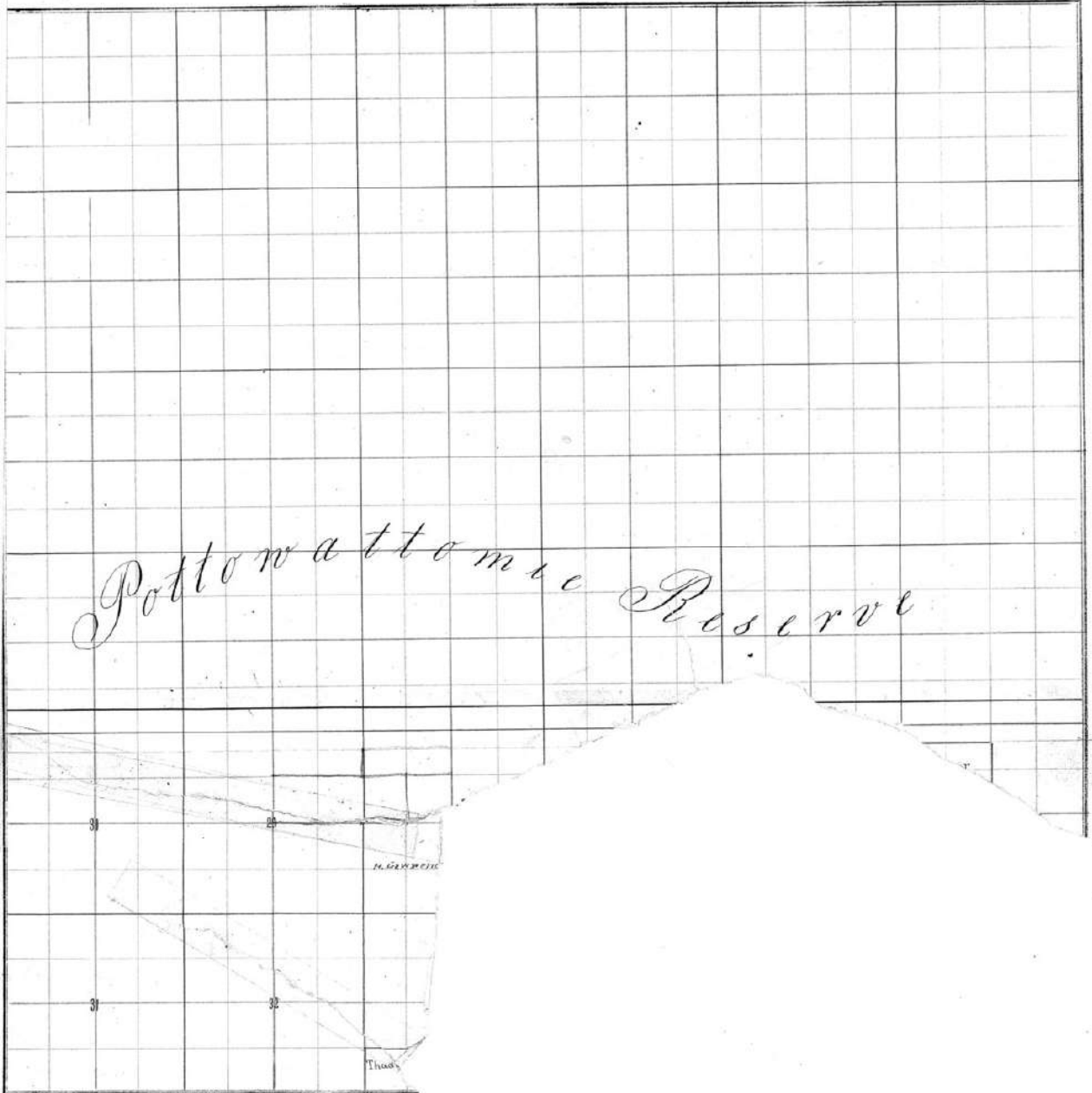
Township No. XI

Range No. XII

of the 6th Principal Meridian.



Township No. XII Range No. XII of the 6th Principal Meridian.



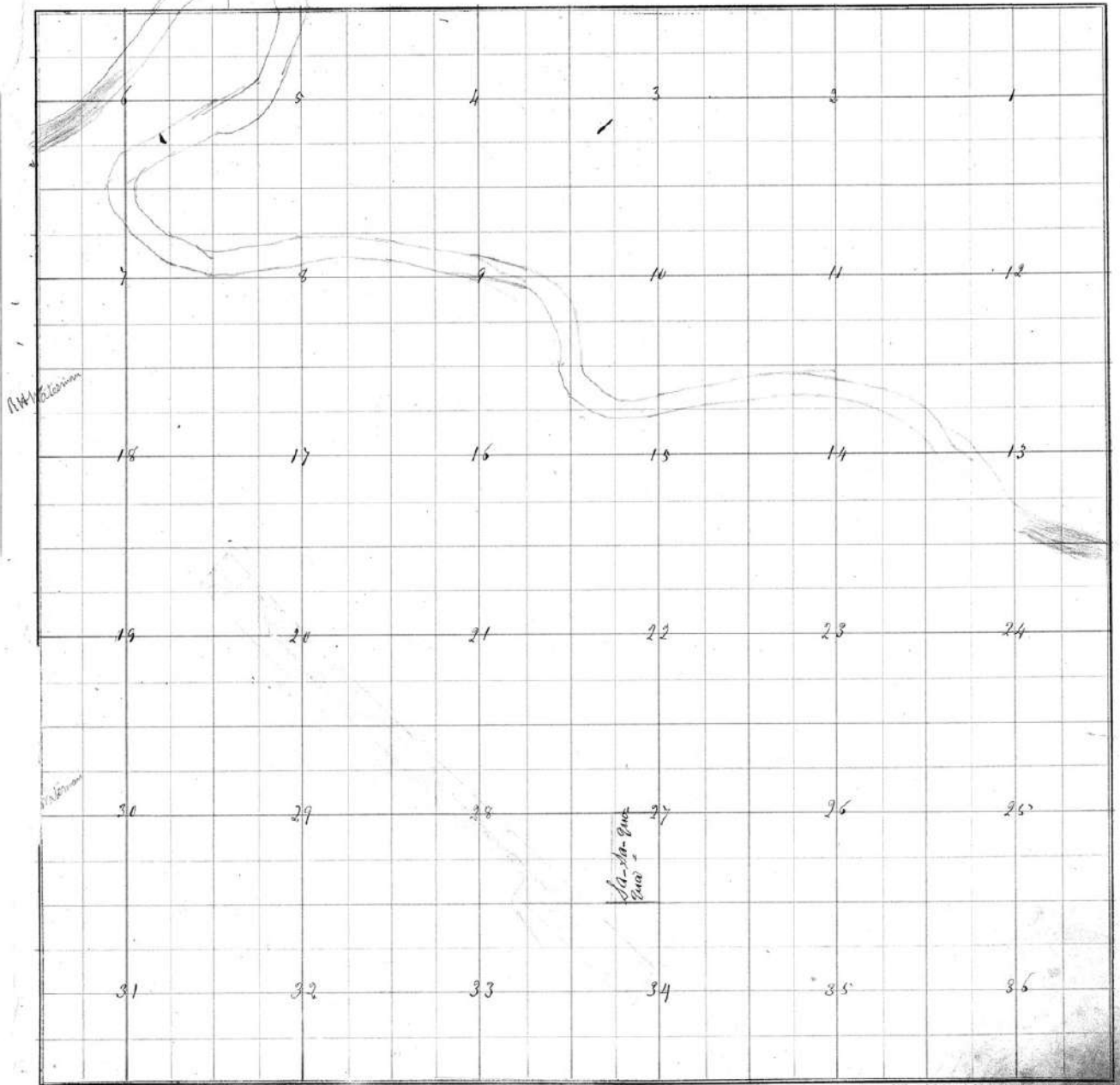
Section No. XIII Range No. XII of the 6th Principal Meridian.

			Thos. H. Fisher	Geo. W. Gillette	Martin Woodford	Geo. M. Chapman		Albert Alden	Chas. A. Sisson	Jacob Stafford	Wm. O. Boring
			Abel F. Hoarwell					Edison I. Belle	W. F. H. Hewing		Joseph S. Mott
				Maria T. Kane	Miriam M. Kane	Clara B. Cook	Edwin W. Hewing				Wm. R. Hickory
			Sebastian Burdick	Edith Burdick	Horace H. Evans	John S. Evans	Samuel B. Smith				Wm. Woodcock
					James Rich	James Rich	Sonny B. Smith				Geo. M. Allen
				Elizabeth I. Bates	Rick Z. Rick		Thaddeus H. Miller			Bernard Hoyt	
				Augustus A. Stephens	Augustus A. Shepherd					Benjamin Munn & Susan Steele	Ernest W. Gillet
					Thomas Barber					Geo. W. Darity	Chas. W. Darity
				Byron Koenig	Edwin I. Butler	Arak B. Eaton	Christopher Stricker	Henry F. Dyer	Berg Hoyt	Chas. W. Darity	Chas. W. Darity
			E. Towse	Robt. A. Towse				Daniel Taylor	W. J. Parish		
				J. Prye	Chas. Barber	Allen A. Mason	Sam. Record	John S. Drinkwater			

Township No. 11

Range No. 13

of the 6th Principal Meridian.



Township No. XII Range No. XIII of the 6th Principal Meridian.

Pottowattomic Reserve

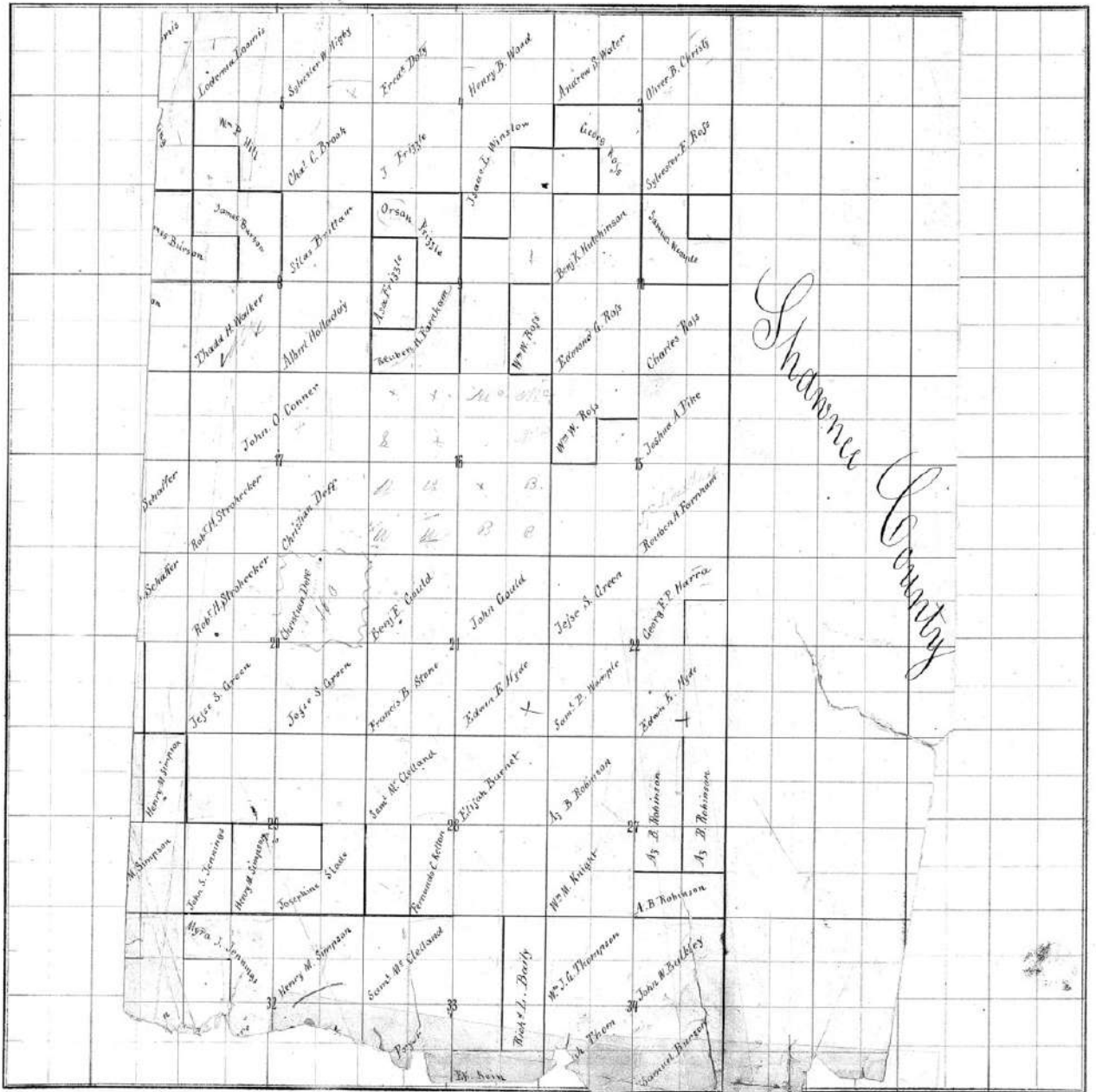
Ernest Harbottle	John J. Piller					John H. Walker
	Gilbert N. Piper	Rich ^d . R. Crane	Rich ^d . R. Crane	Rich ^d . R. Crane		John P. Coakley
Erasmus K. Joannis	John T. Danmish	Robt P. Miller	Rich ^d . R. Crane	James B. Neagley		Julius Ford
Duncan Johnston	Geo. G. Johnston	Edgar H. Joannis	Rich ^d . R. Crane	Sam ^l W. Clouting	James Crawford	J. P. Coakley
		Rich ^d . B. Wood		Sam ^l Sage		Alex ^s B. Bie
				Simon Water		

Shannon County

Township No. 13

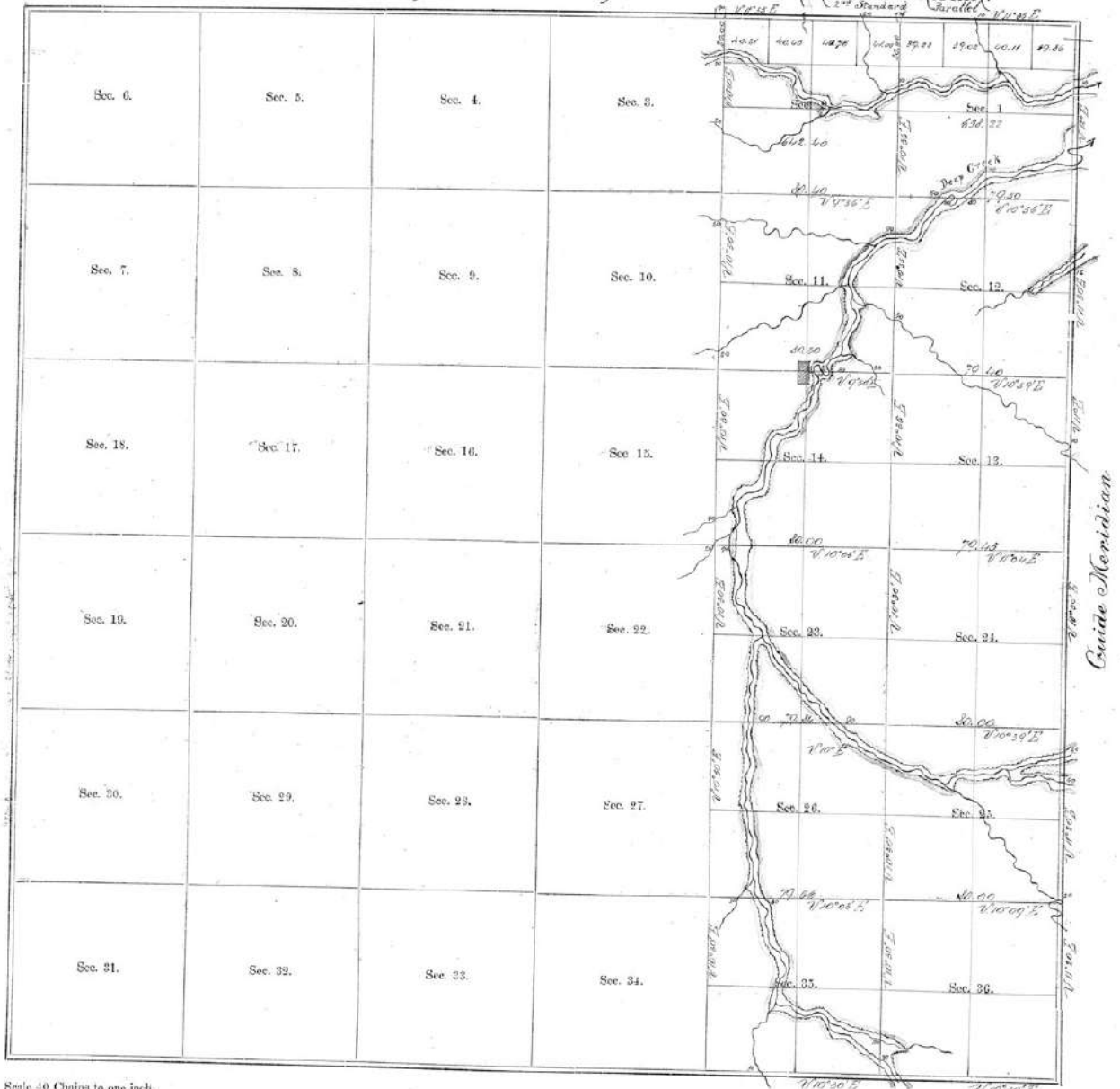
Range No. 13

of the 6th Principal Meridian.



Shannon County

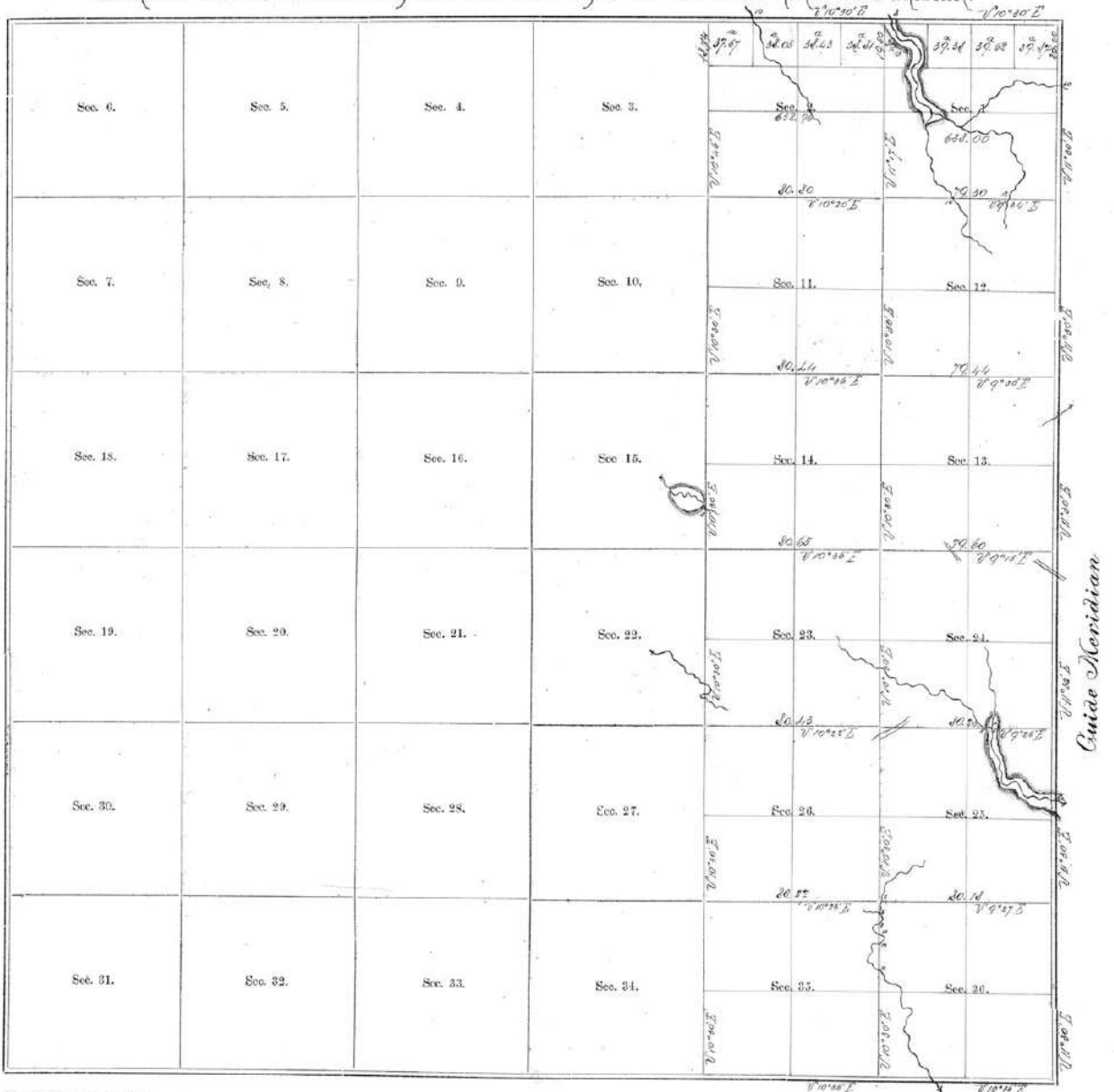
TOWNSHIP No. **11** SOUTH RANGE No. **8** EAST OF THE 6TH PRINCIPAL MERIDIAN. **2**



Scale 40 Chains to one inch.

The above Map of Township No. South Range No. East of the 6th Principal Meridian, is a true copy of the original plat.

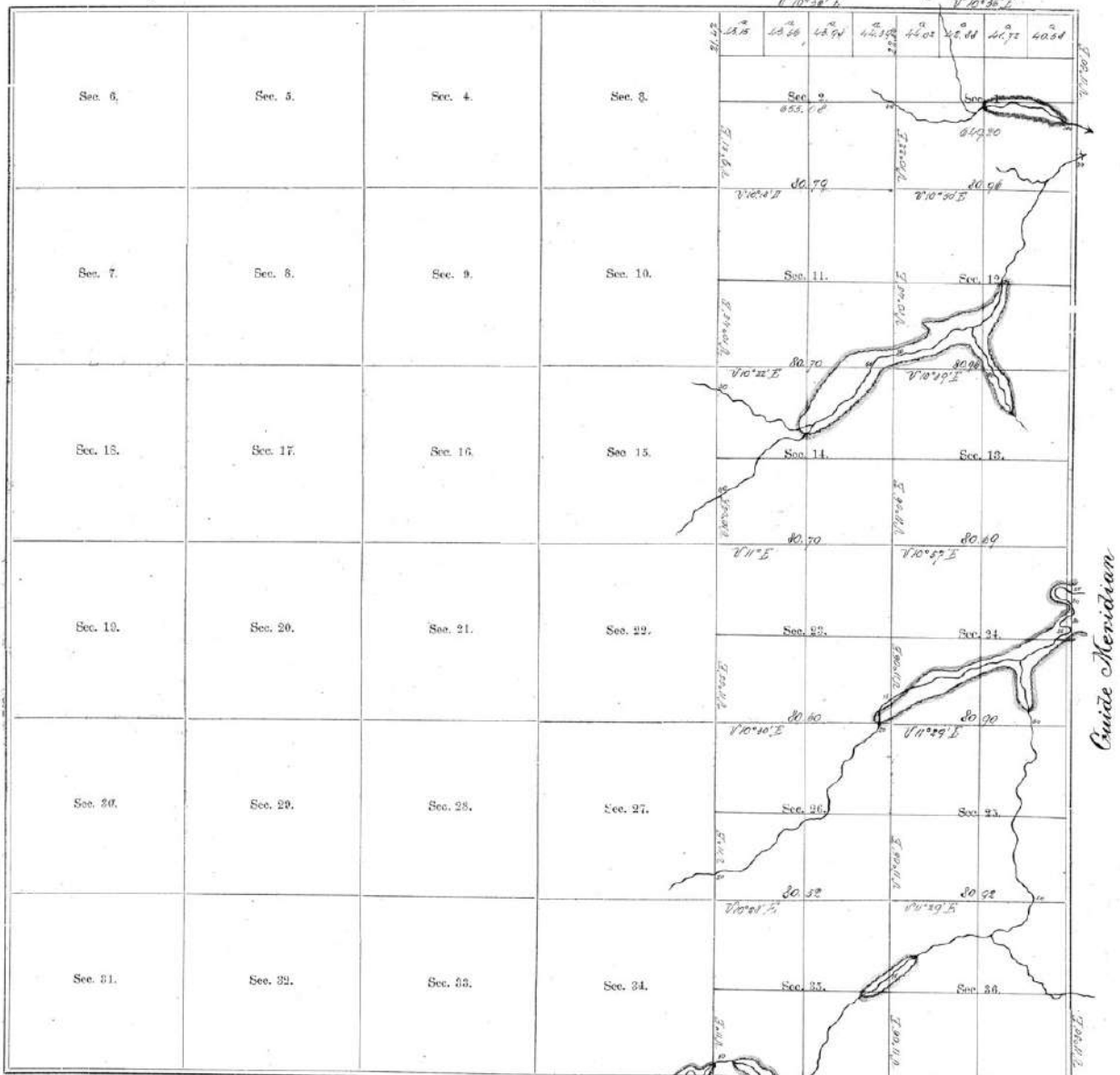
TOWNSHIP NO. **12** SOUTH RANGE NO. **8** EAST OF THE 6TH PRINCIPAL MERIDIAN. **3**



Scale 40 Chains to one inch.

The above Map of Township No. South Range No. East of the 6th Principal Meridian, is a true copy of the original plat.

TOWNSHIP No. **13** SOUTH RANGE No. **8** EAST OF THE 6TH PRINCIPAL MERIDIAN. **4**



Scale 40 Chains to one inch.

The above Map of Township No. South Range No. East of the 6th Principal Meridian, is a true copy of the original plat.

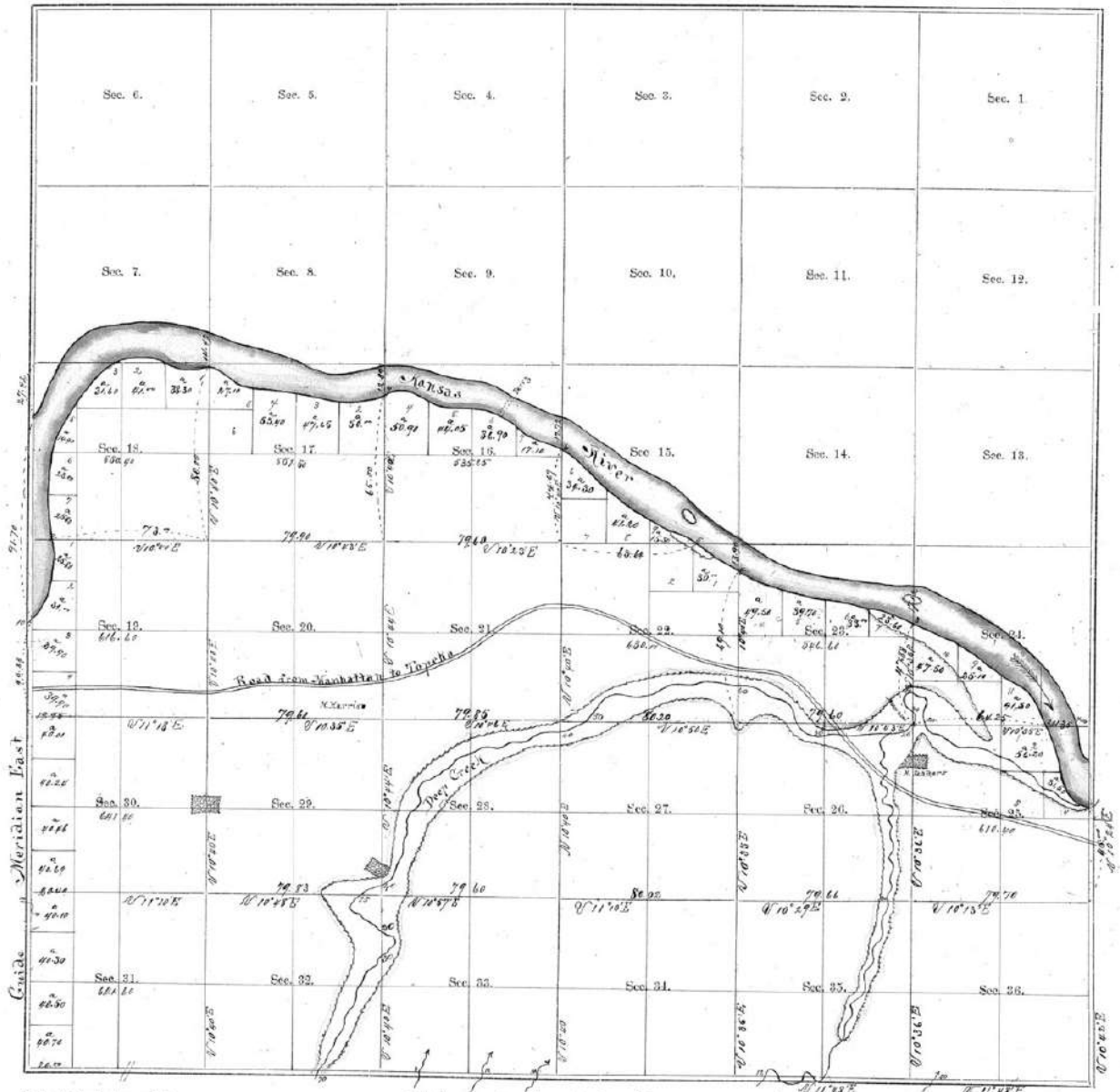
TOWNSHIP No. **14** SOUTH RANGE No. **8** EAST OF THE 6TH PRINCIPAL MERIDIAN, **5**

Sec. 6.	Sec. 5.	Sec. 4.	Sec. 3.	Sec. 2.	Sec. 1.
Sec. 7.	Sec. 8.	Sec. 9.	Sec. 10.	Sec. 11.	Sec. 12.
Sec. 18.	Sec. 17.	Sec. 16.	Sec. 15.	Sec. 14.	Sec. 13.
Sec. 19.	Sec. 20.	Sec. 21.	Sec. 22.	Sec. 23.	Sec. 24.
Sec. 20.	Sec. 20.	Sec. 23.	Sec. 27.	Sec. 26.	Sec. 25.
Sec. 31.	Sec. 22.	Sec. 23.	Sec. 34.	Sec. 35.	Sec. 26.

Scale 40 Chains to one inch.

The above Map of Township No. South Range No.
East of the 6th Principal Meridian, is a true copy of the original plat.

TOWNSHIP NO. **10** SOUTH RANGE NO. **9** EAST OF THE 6TH PRINCIPAL MERIDIAN. **6**



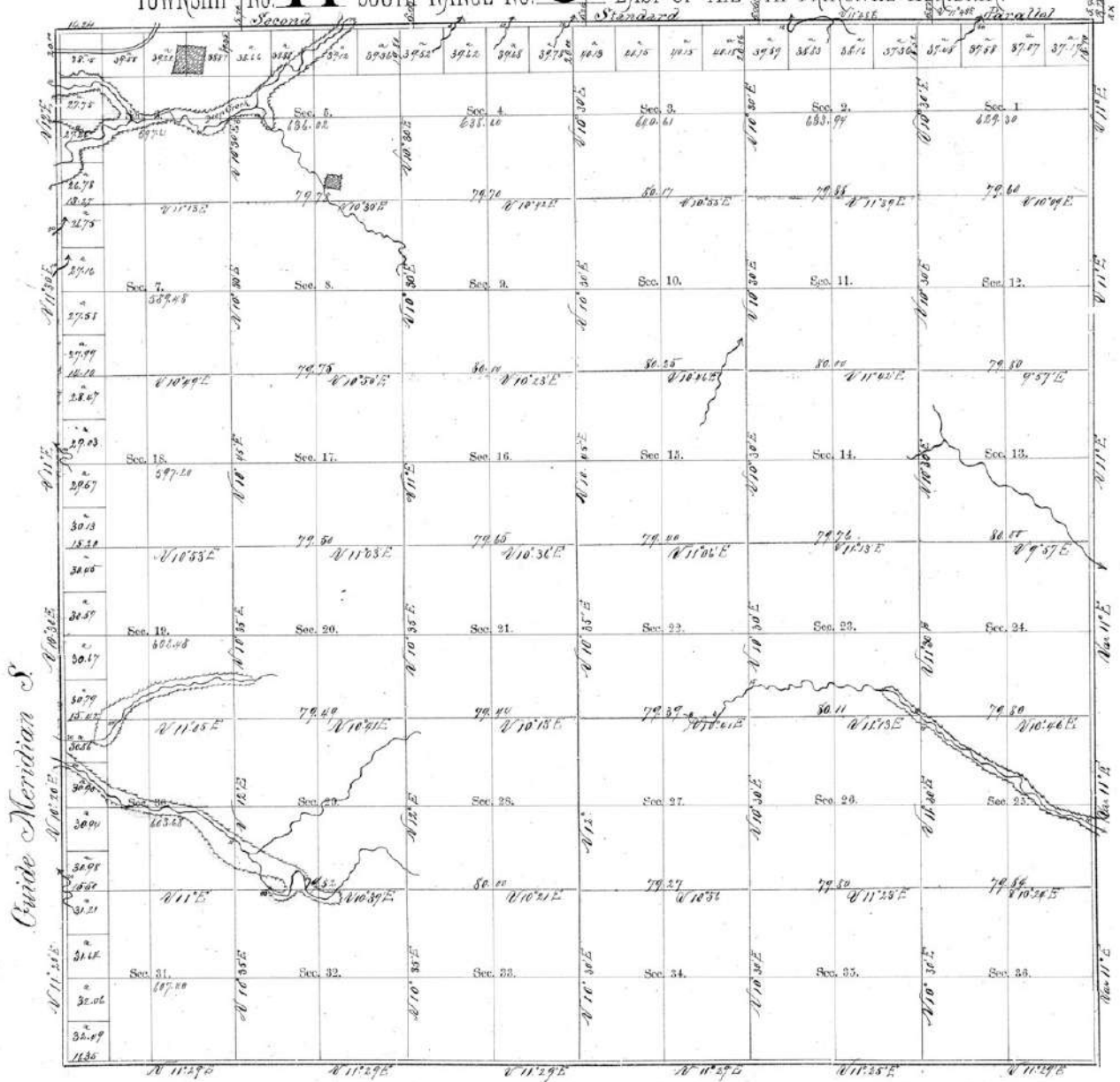
Scale 40 Chains to one inch.

2nd Standard Parallel S.

The above Map of Township No. South Range No. East of the 6th Principal Meridian, is a true copy of the original plat.

TOWNSHIP No. 11 SOUTH RANGE No. 9 EAST OF THE 6TH PRINCIPAL MERIDIAN.

7



Scale 40 Chains to one inch.

Total Number of Acres 22,776.32

The above Map of Township No. South Range No. East of the 6th Principal Meridian, is a true copy of the original plat.