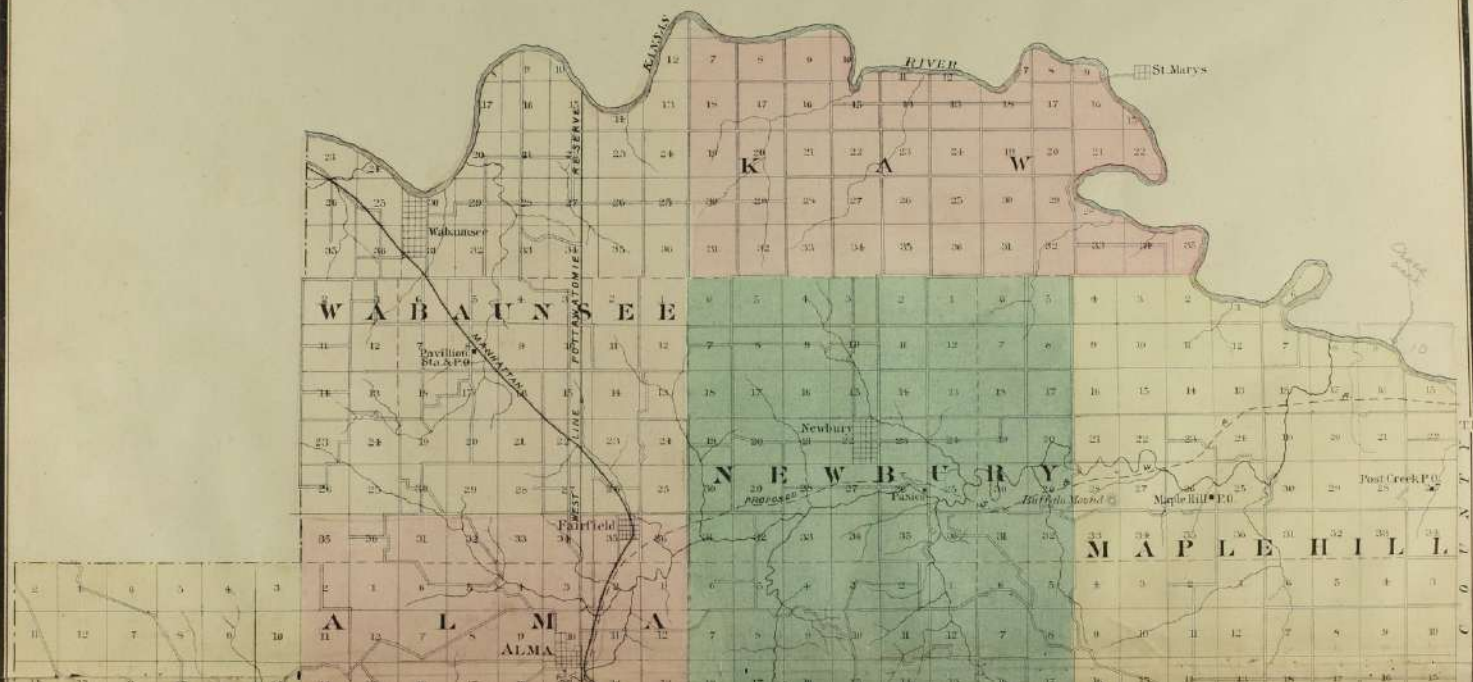
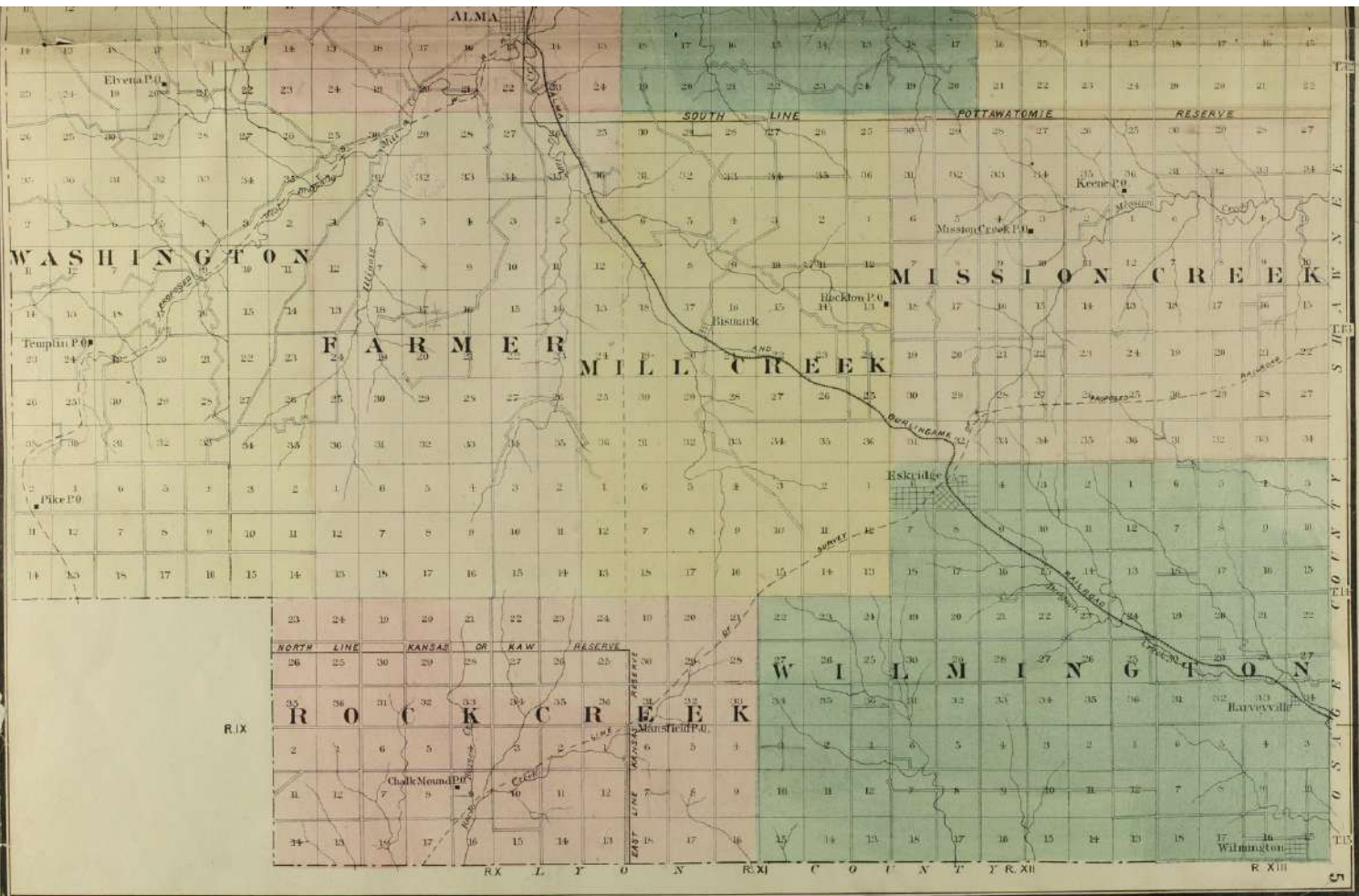


OUTLINE MAP OF

WABAUNSEE COUNTY

KANSAS





ALMA

Elvena P.O.

WASHINGTON

Temple P.O.

Pike P.O.

SOUTH LINE

POTTAWATOMIE RESERVE

MISSION CREEK

FARMER MILL CREEK

Bismack

Rockton P.O.

Mission Creek P.O.

ESBJERG

CHALK MOUND P.O.

MANSFIELD P.O.

WILMINGTON

Harveyville

Wilmington

NORTH LINE

KANSAS OR KAW RESERVE

R IX

R X

R XI

R XII

R XIII

T I

T II

T III

T IV

T V

T VI

T VII

T VIII

T IX

T X

T XI

T XII

T XIII

WABAUNSEE COUNTY

WABAUNSEE

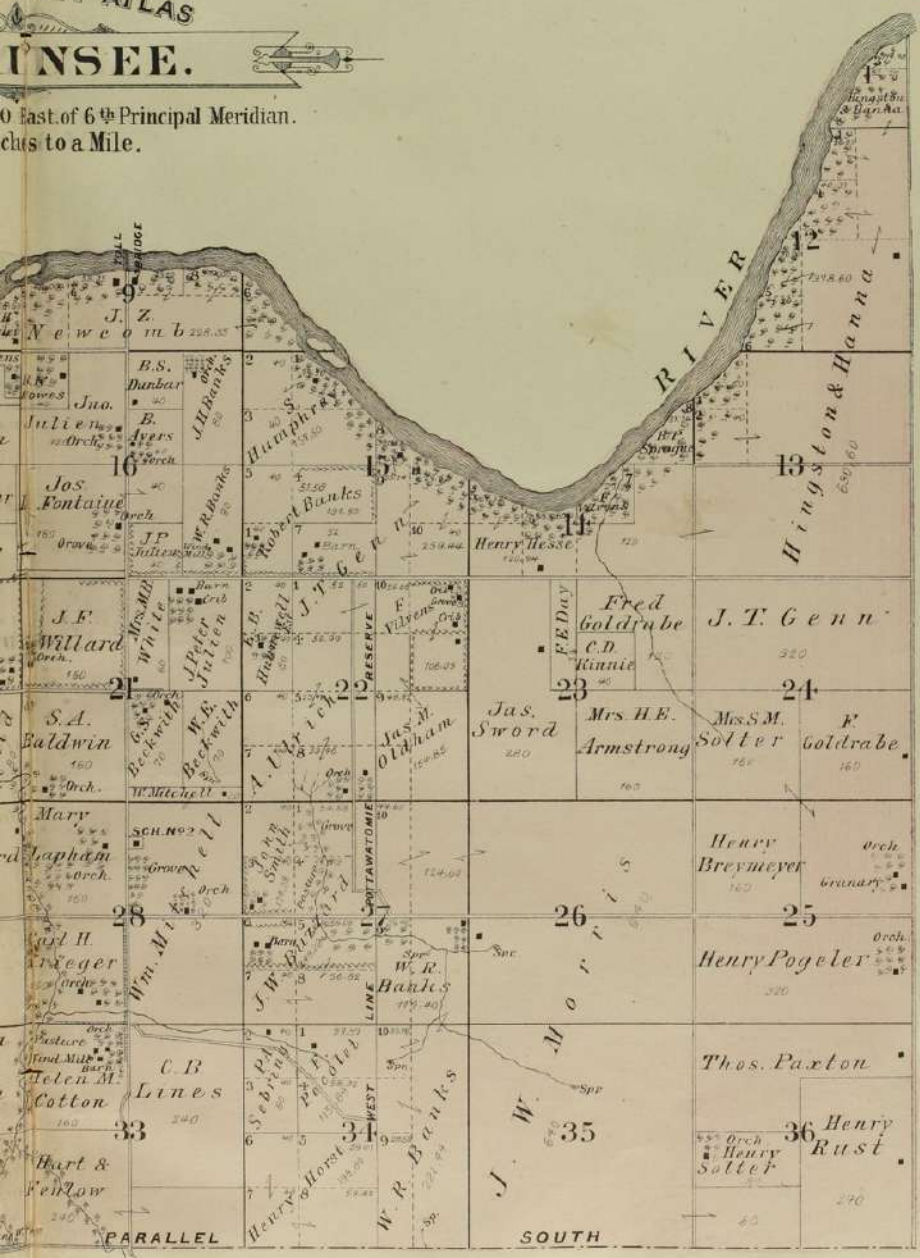
Township 10 South Ranges 9 & 10 East
Scale 2 Inches



COUNTY ATLAS

INSEE.

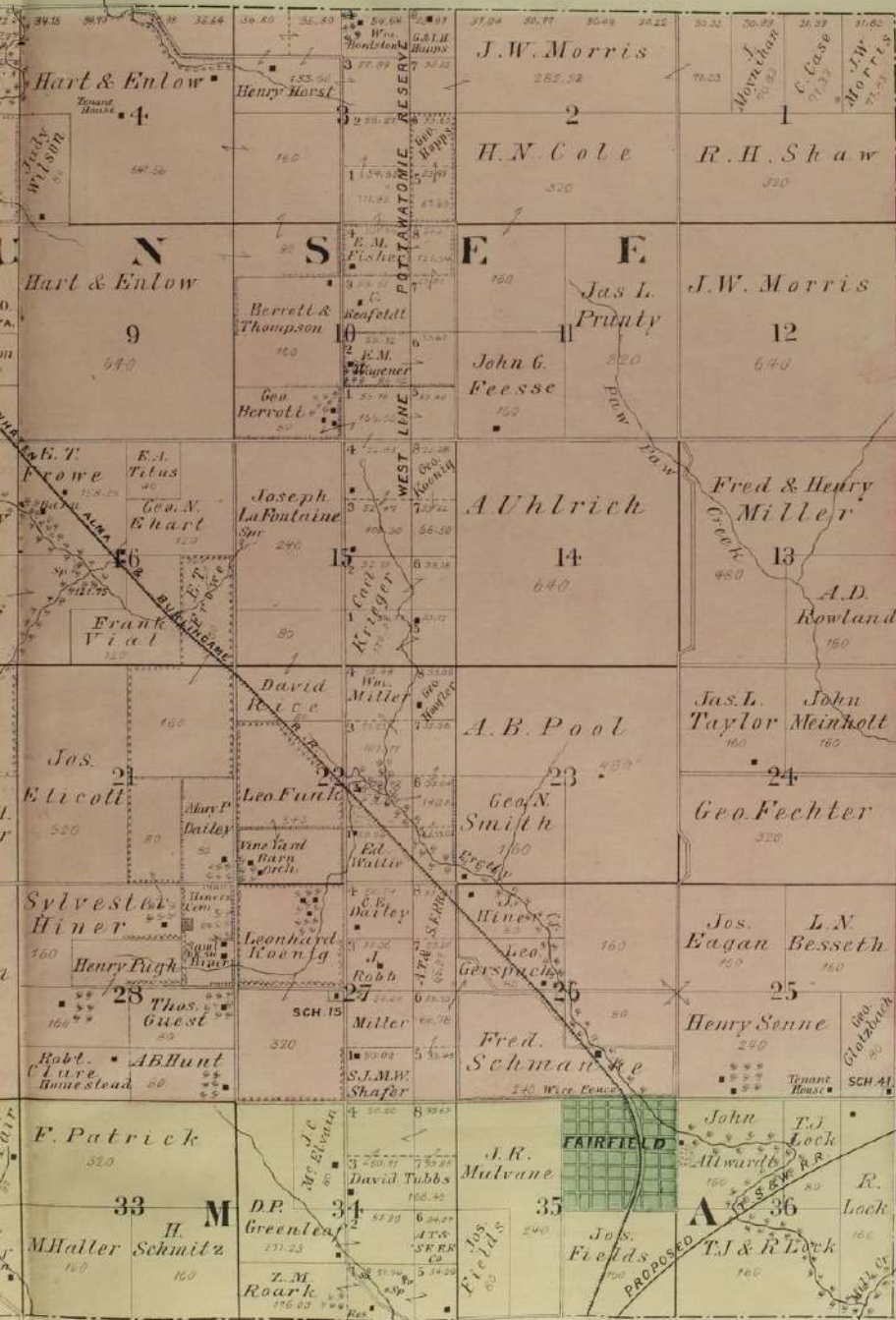
0 East of 6th Principal Meridian.
Scale to a Mile.

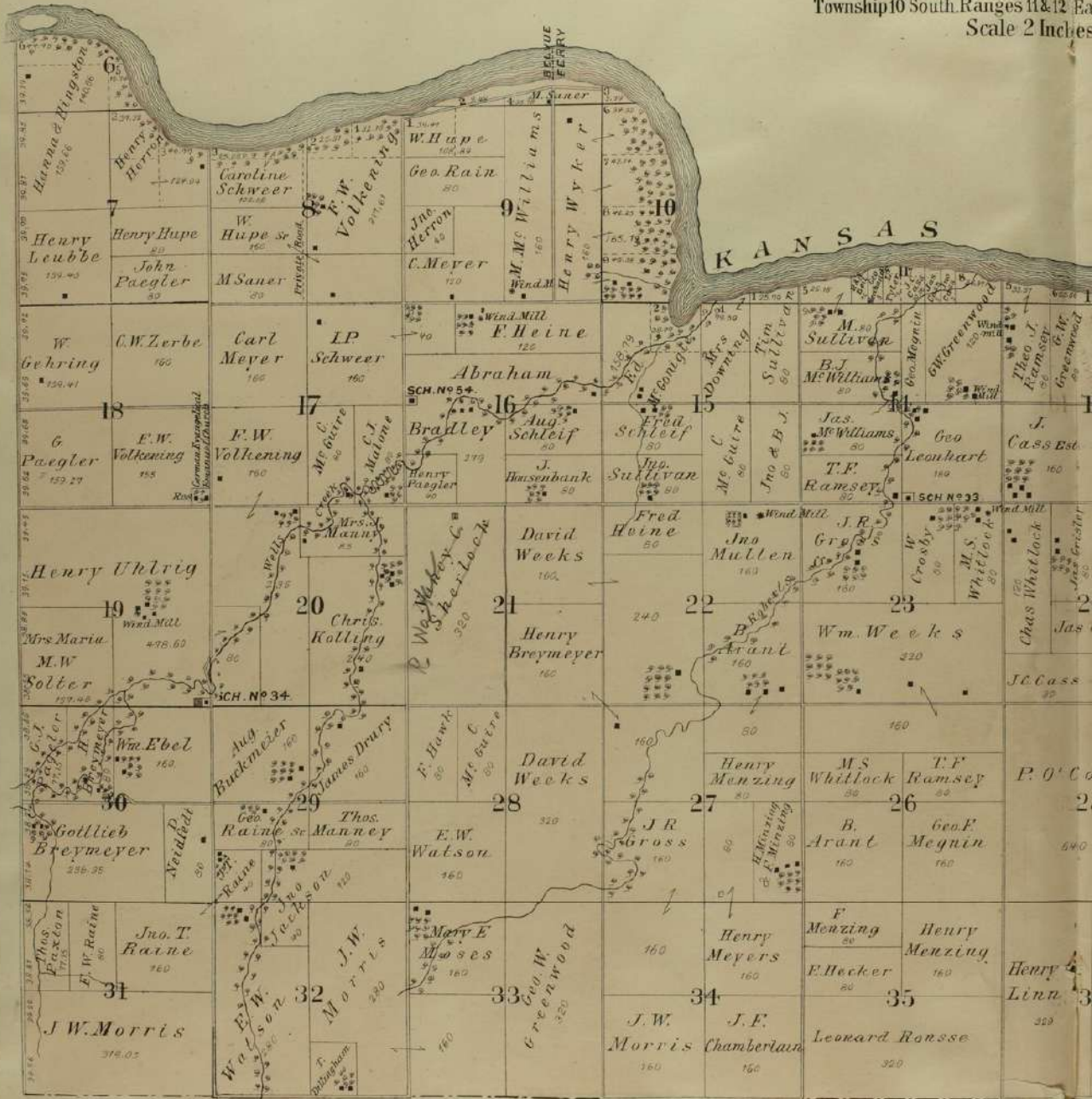


330

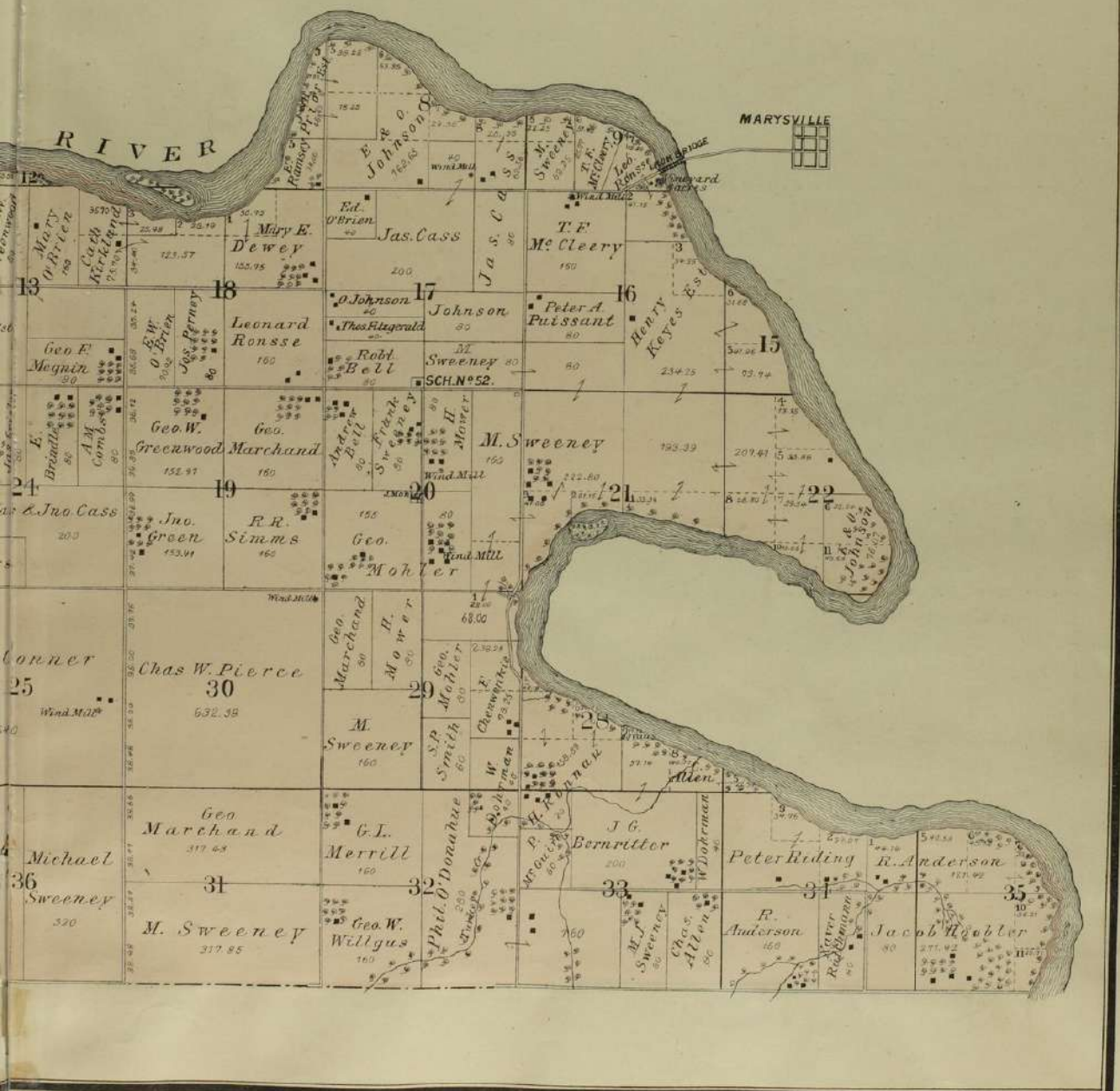


10 East of 6th Principal Meridian.
1/4 inches to a Mile.





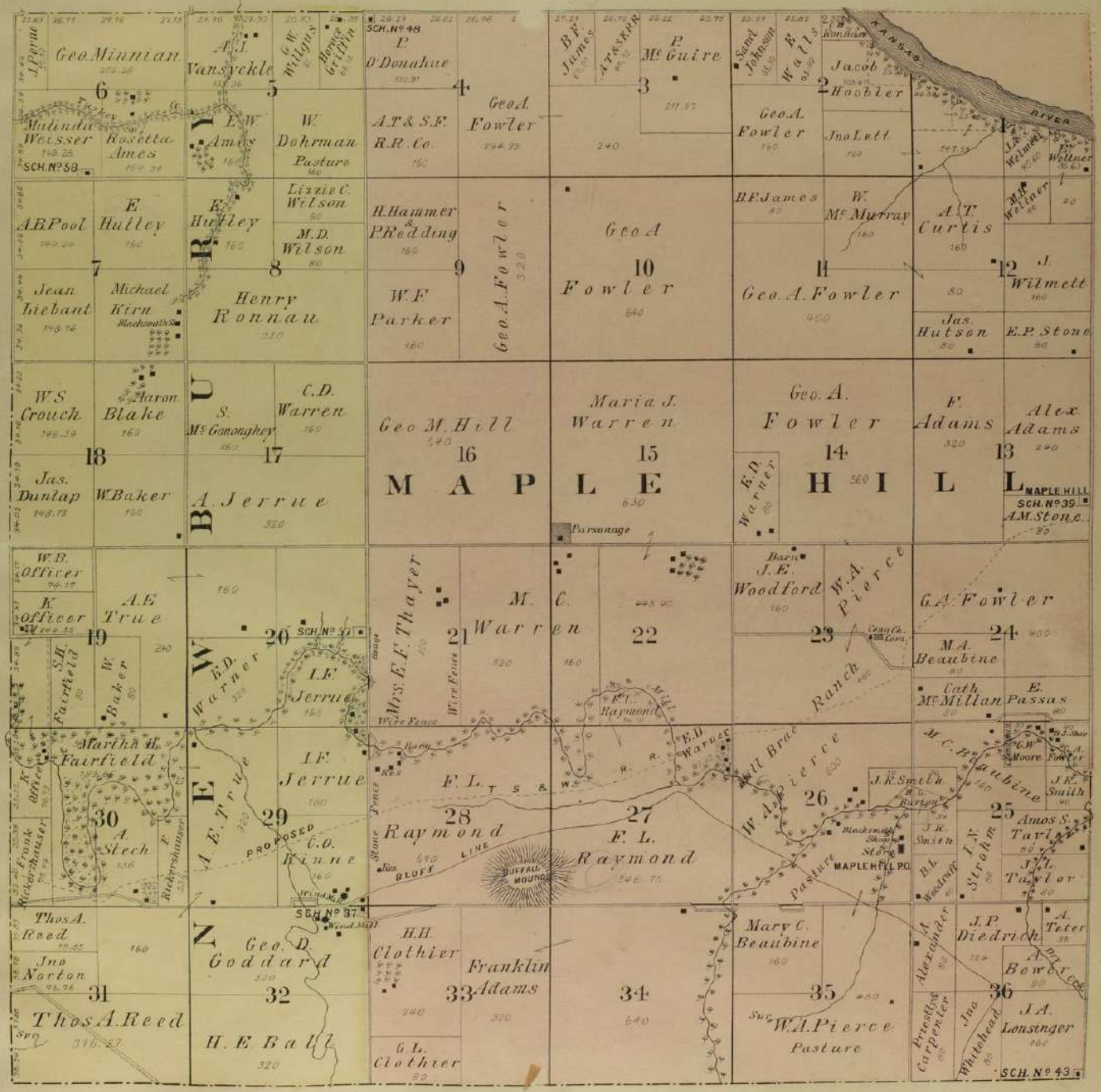
12 East of 6th Principal Meridian.
Chas to a Mile.



WABAUNSEE COUNTY ATLAS

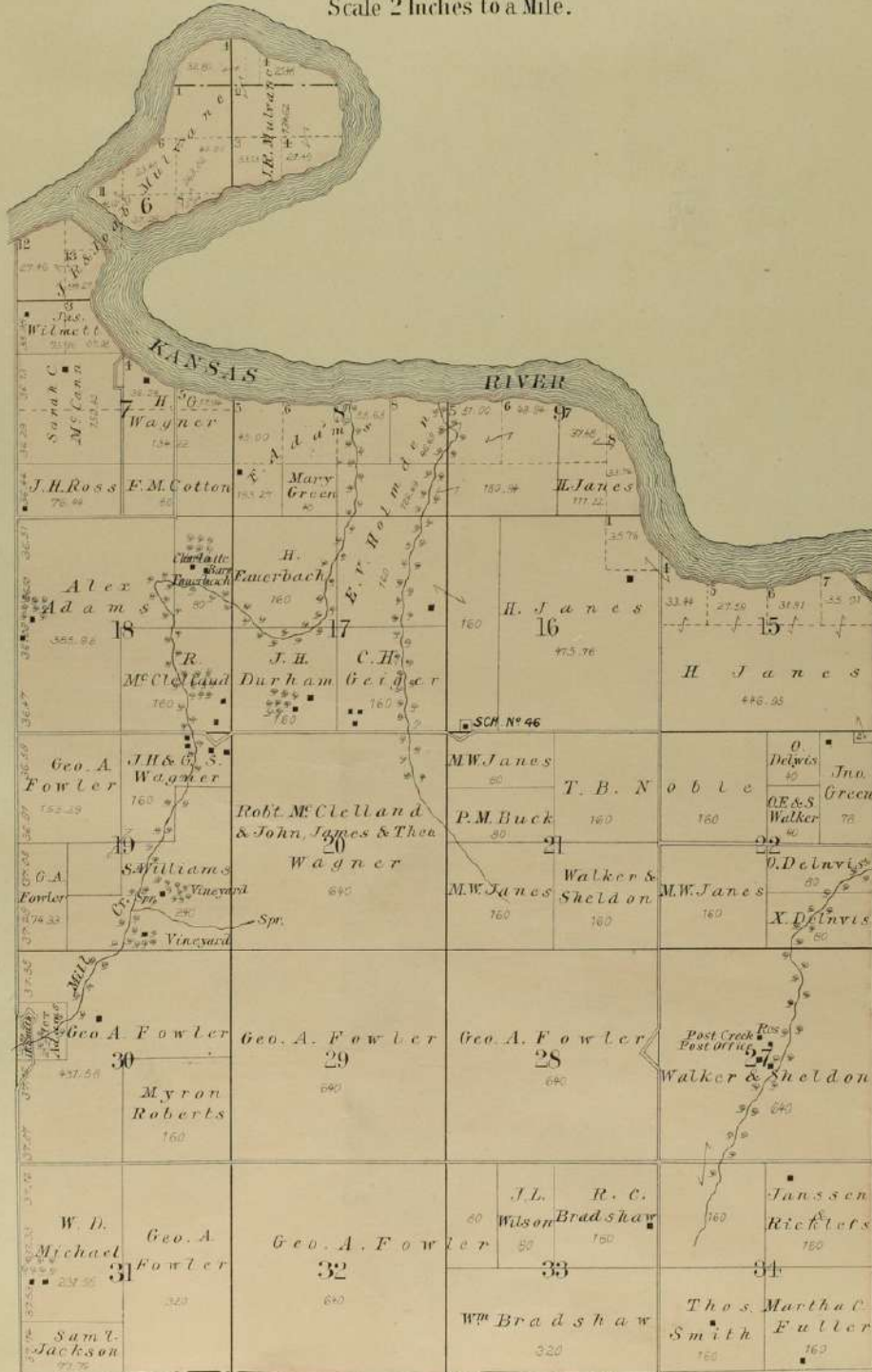
NEWBURY & MAPLE HILL.

Township 11 South Range 12 East of 6th Principal Meridian.
Scale 2 Inches to a Mile.



MAPLE HILL.

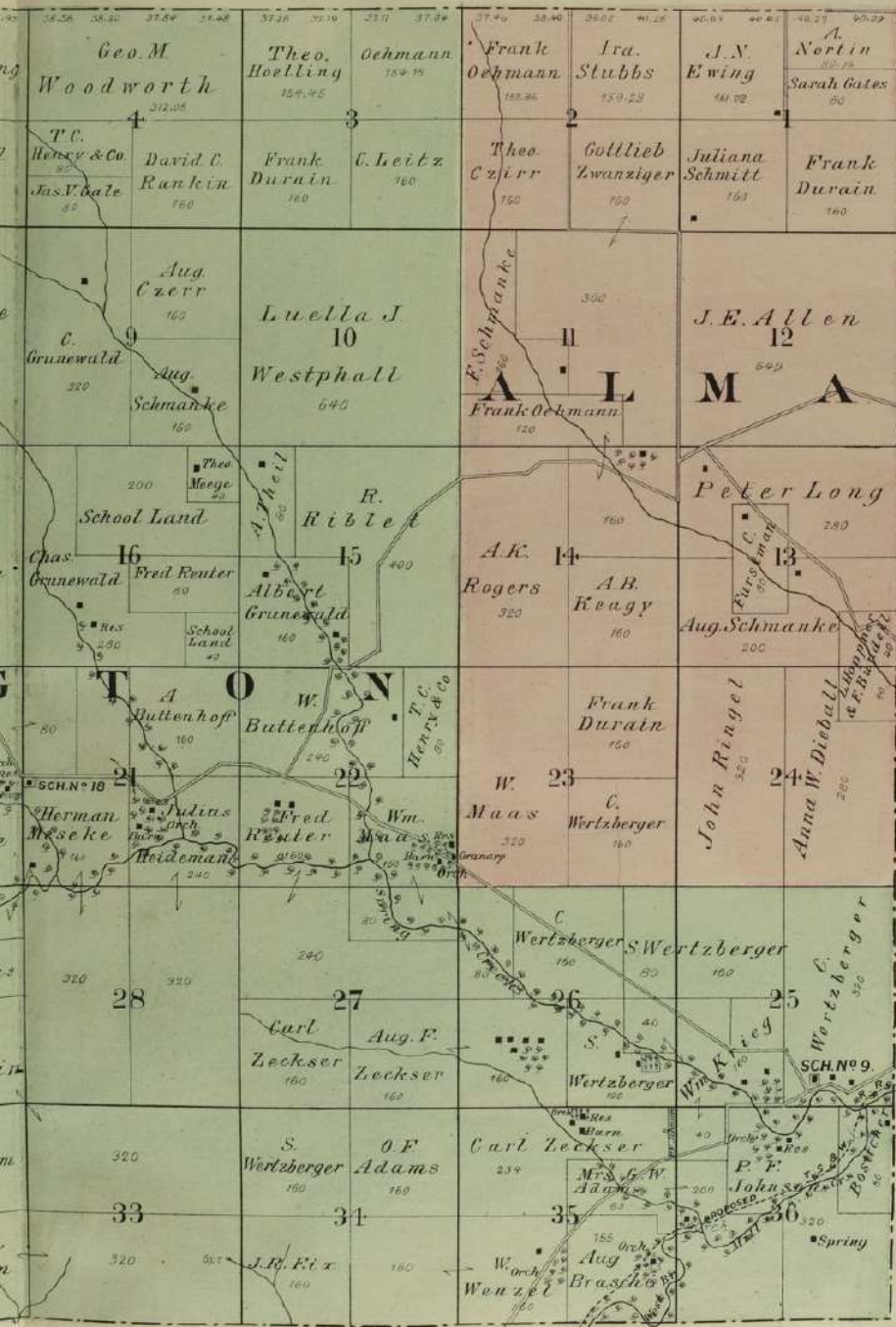
Township 10 & 11 South Range 13 East of 6th Principal Meridian.
Scale 2 Inches to a Mile.



COUNTY ATLAS

WASHINGTON.

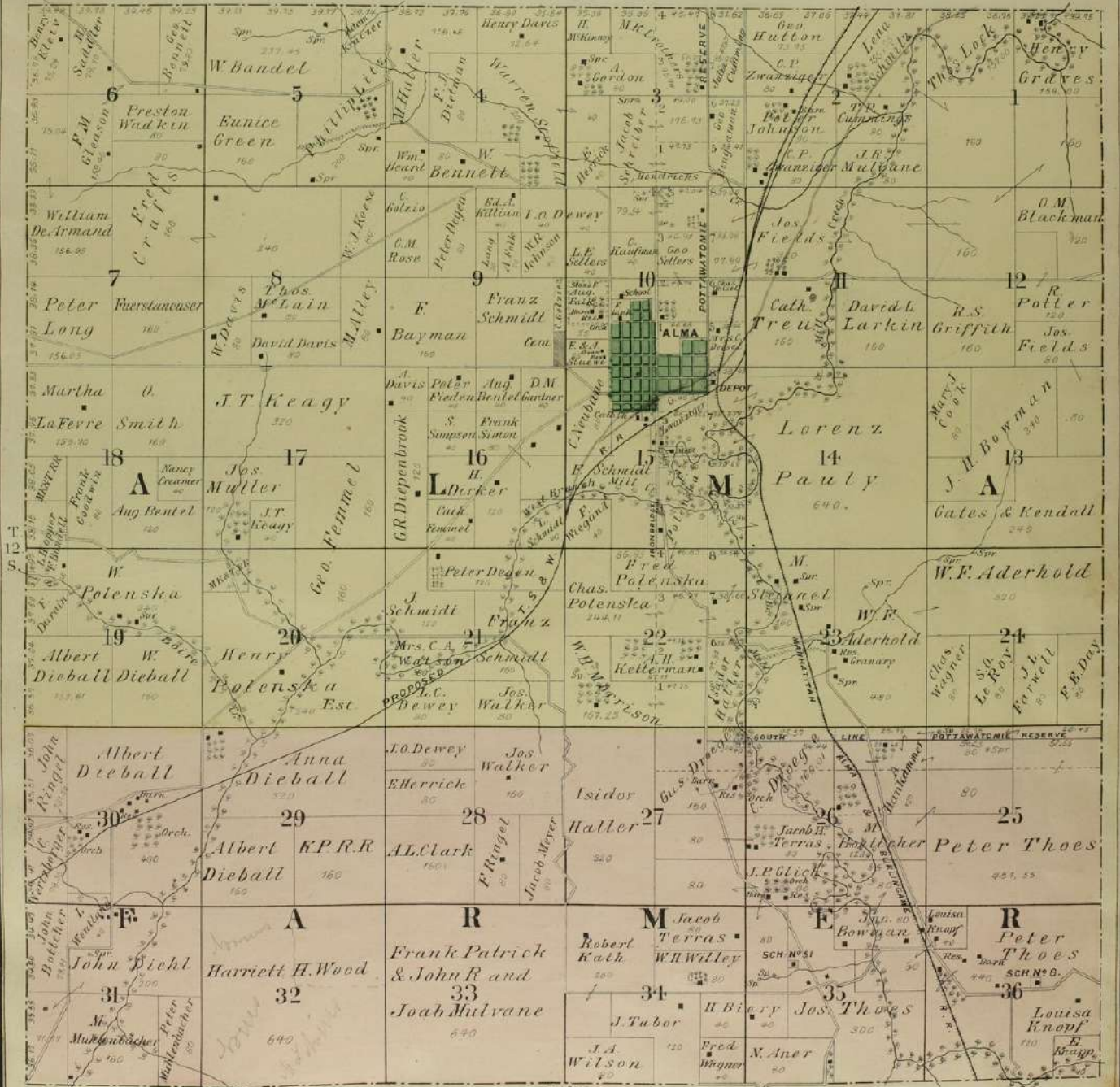
9 East of 6th Principal Meridian.
Miles to a Mile.



WABAUNSEE COUNTY ATLAS

ALMA & FARMER.

Township 12 South Range 40 East of 6th Principal Meridian. Scale 2 Inches to a Mile.

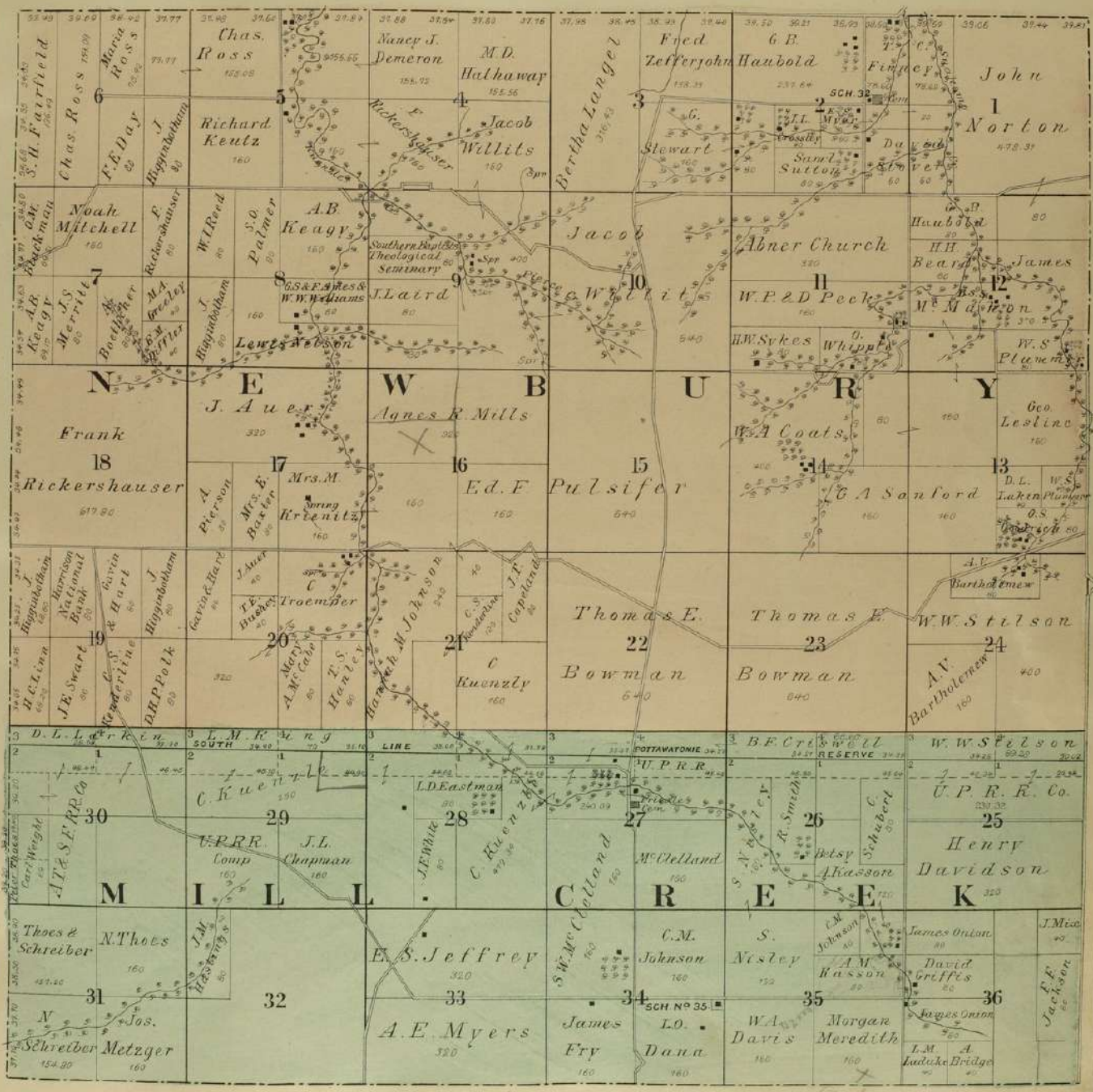


R.10.E.

WABAUNSEE COUNTY ATLAS

NEWBURY & MILL CR'K.

Township 12 South Range 11 East of 6th Principal Meridian.
Scale 2 Inches to a Mile.



WABAUNSEE COUNTY ATLAS

NEWBURY, MAPLE HILL & MISSION CR. K.

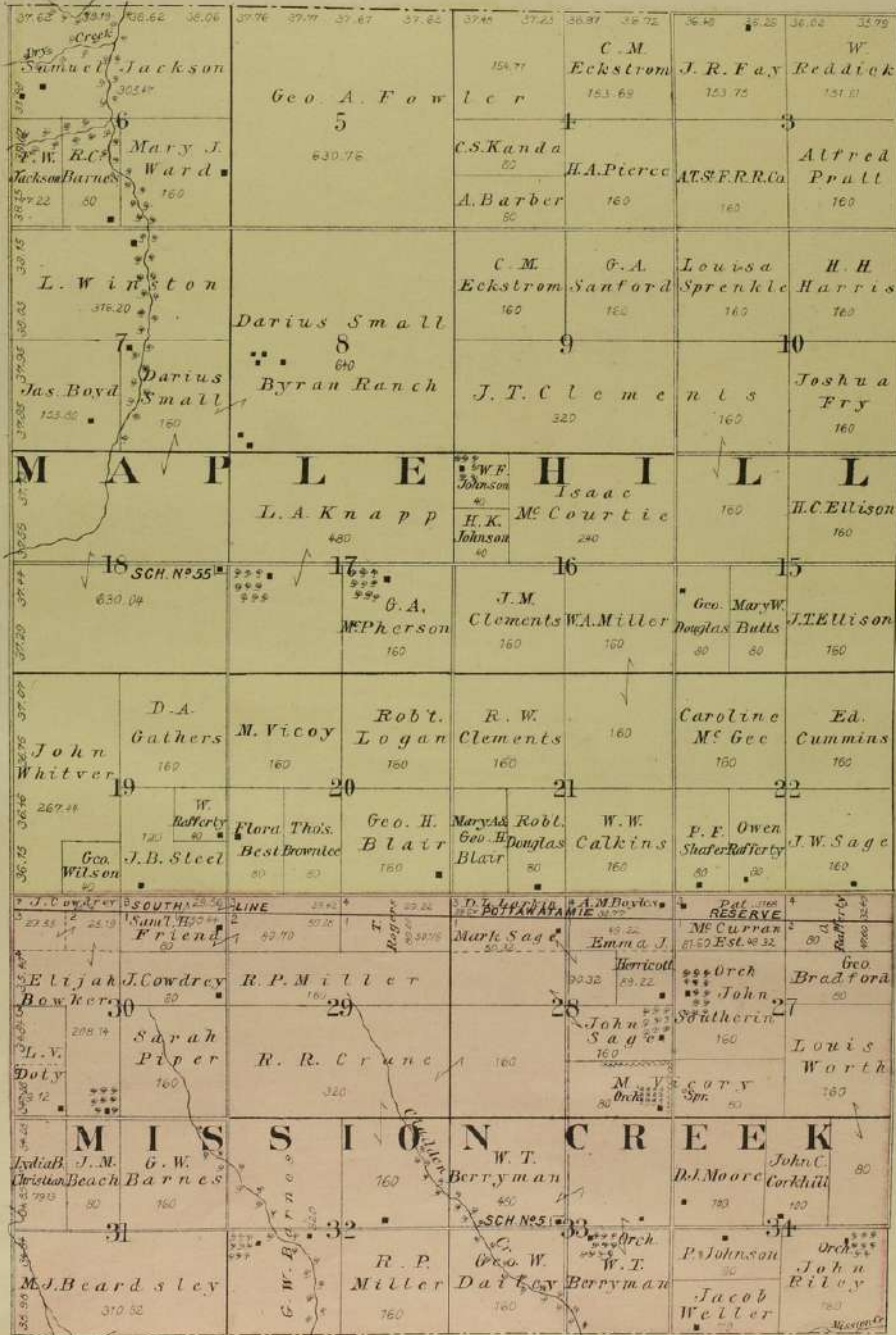
Township 12 South Range 12 East of 6th Principal Meridian.
Scale 2 Inches to a Mile.

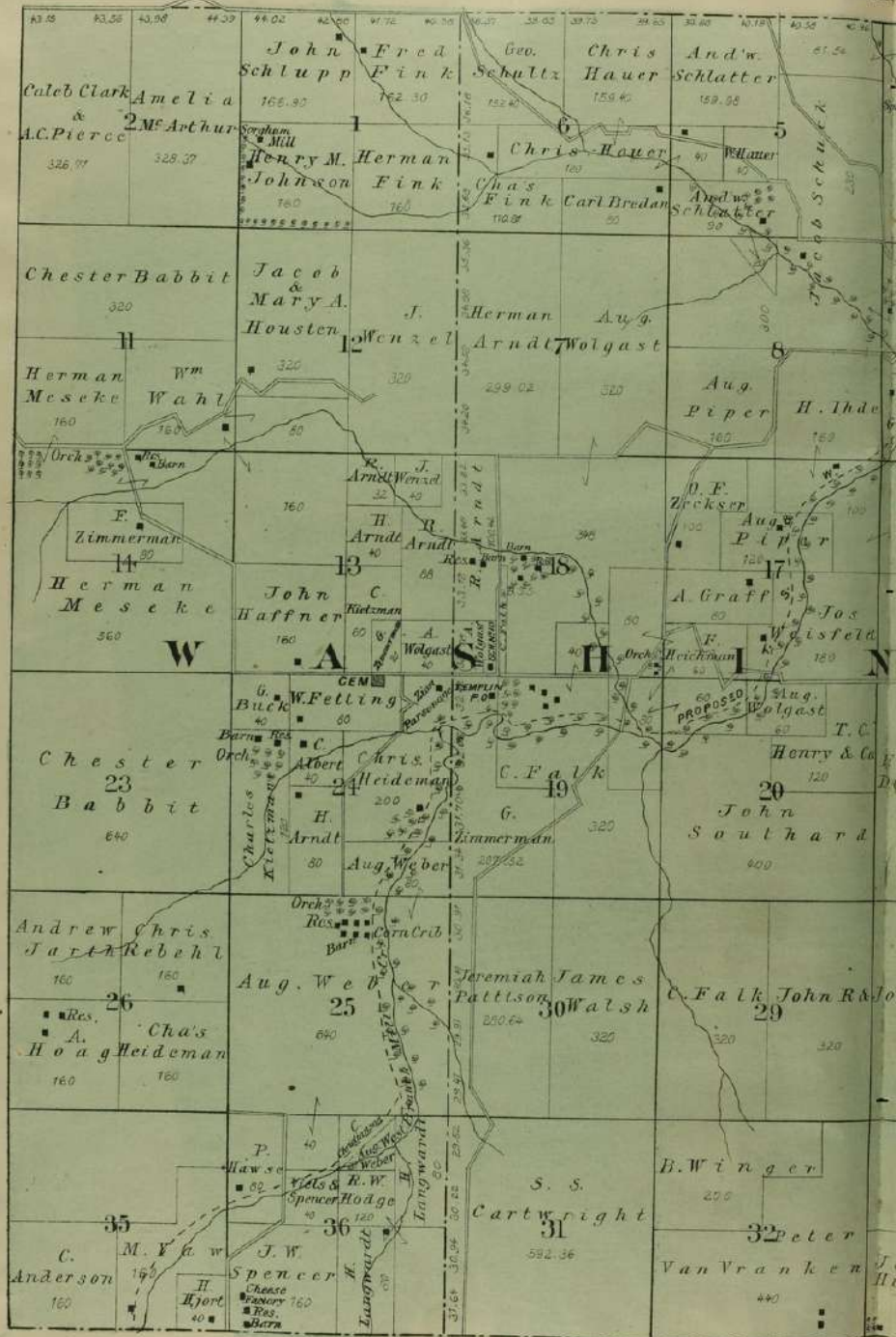


WABAUNSEE COUNTY ATLAS

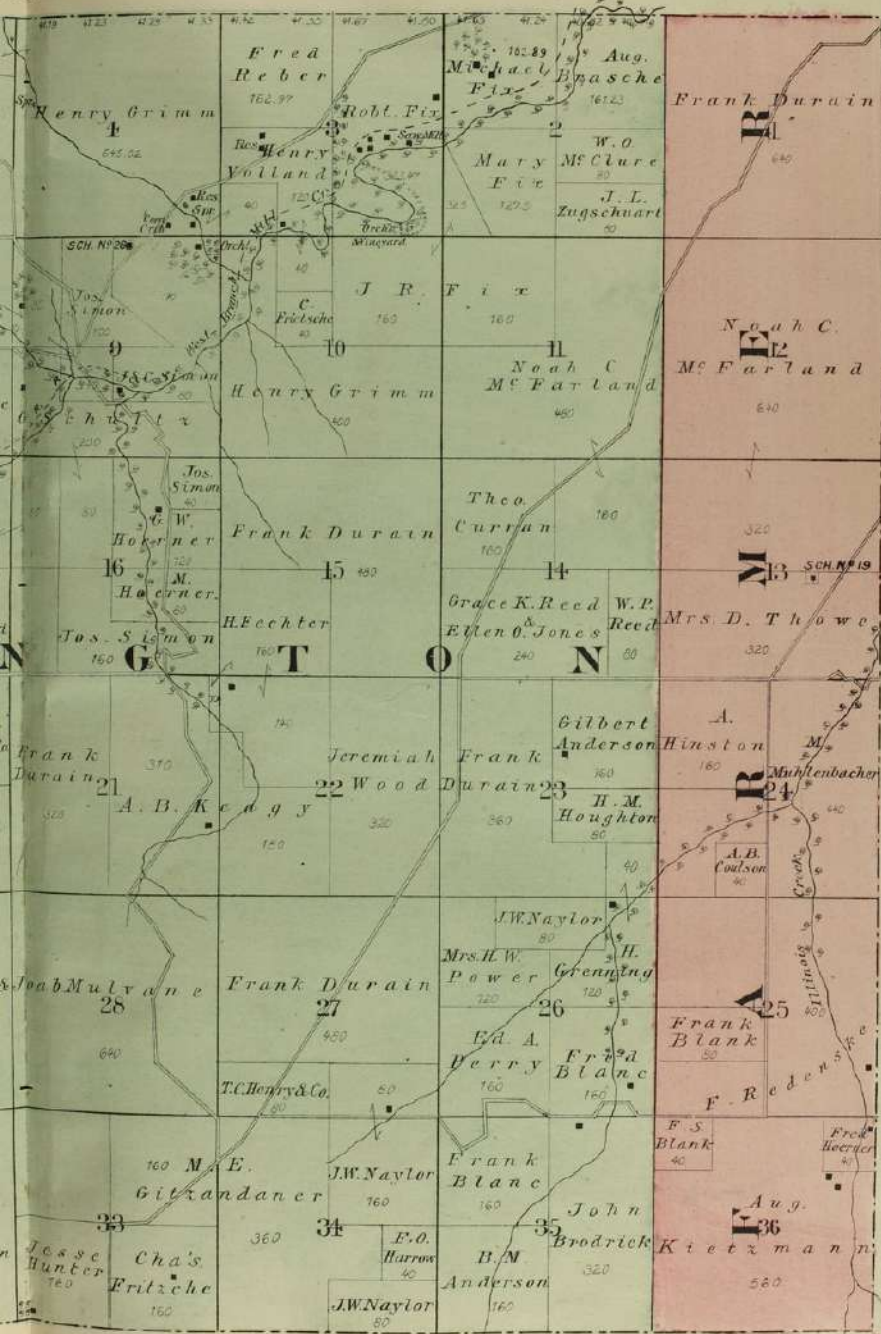
MAPLE HILL & MISSION CREEK

Township 12 South Range 13 East of 6th Principal Meridian.
Scale 2 Inches to a Mile.





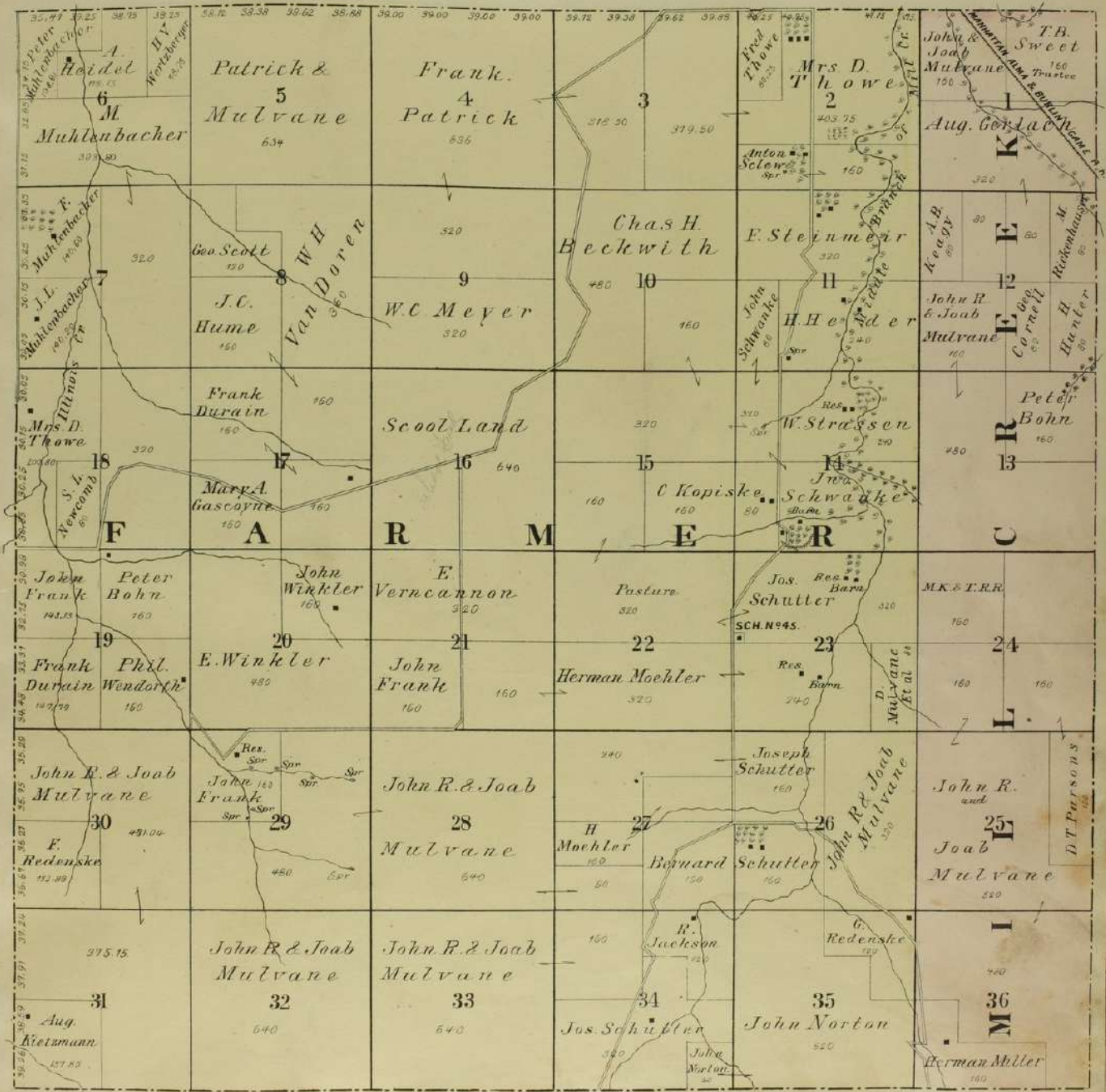
9 East of 6th Principal Meridian.
Ches to a Mile.



WABAUNSEE COUNTY ATLAS

FARMER & MILL CREEK.

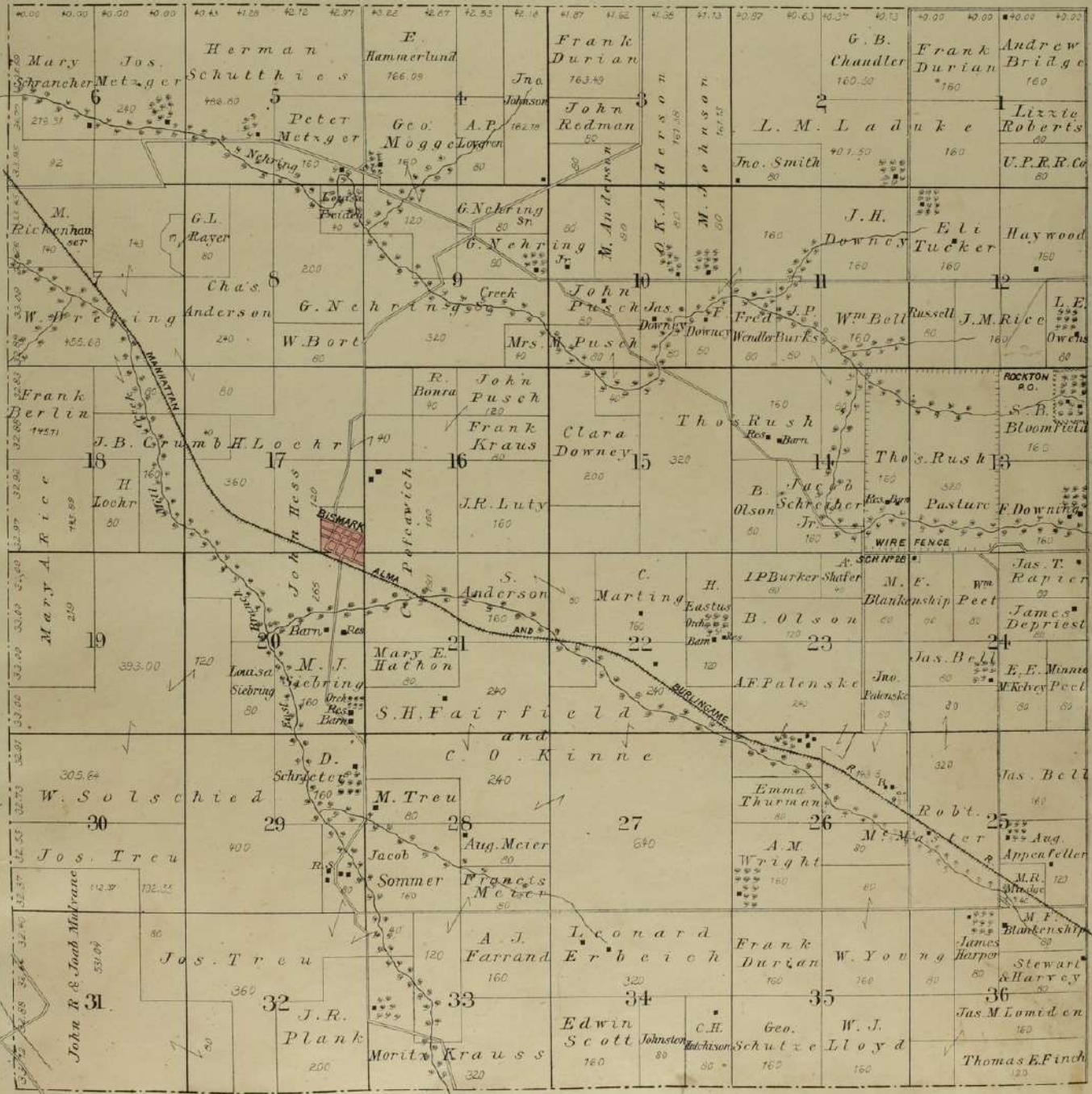
Township 13 South, Range 10 East of 6th Principal Meridian.
Scale 2 Inches to a Mile.



WABAUNSEE COUNTY ATLAS

MILL CREEK.

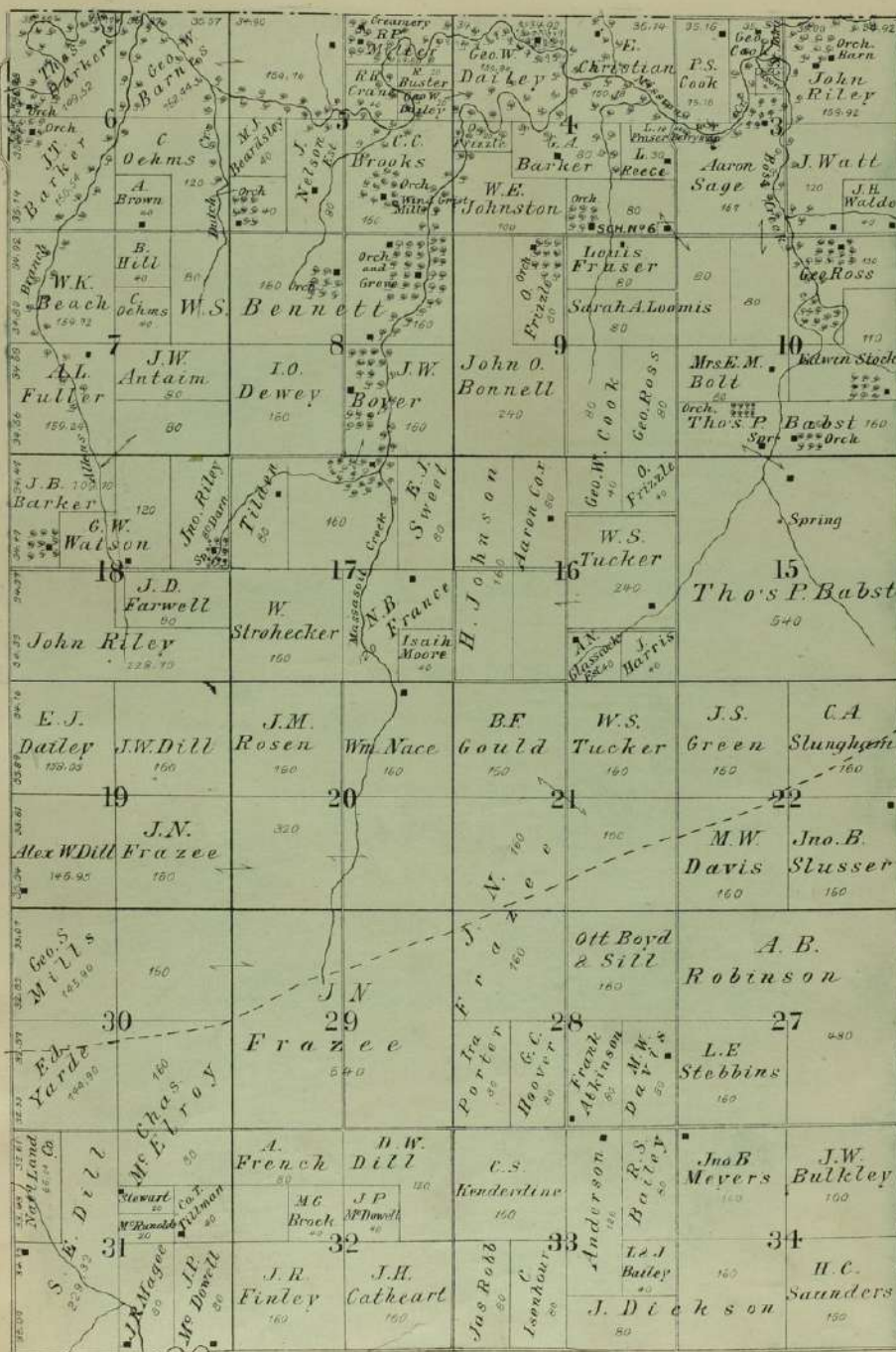
Township 13 South Range 11 East of 6th Principal Meridian.
Scale 2 Inches to a Mile.



WABAUNSEE COUNTY ATLAS

MISSION CREEK.

Township 13 South Range 13 East of 6th Principal Meridian.
Scale 2 Inches to a Mile.

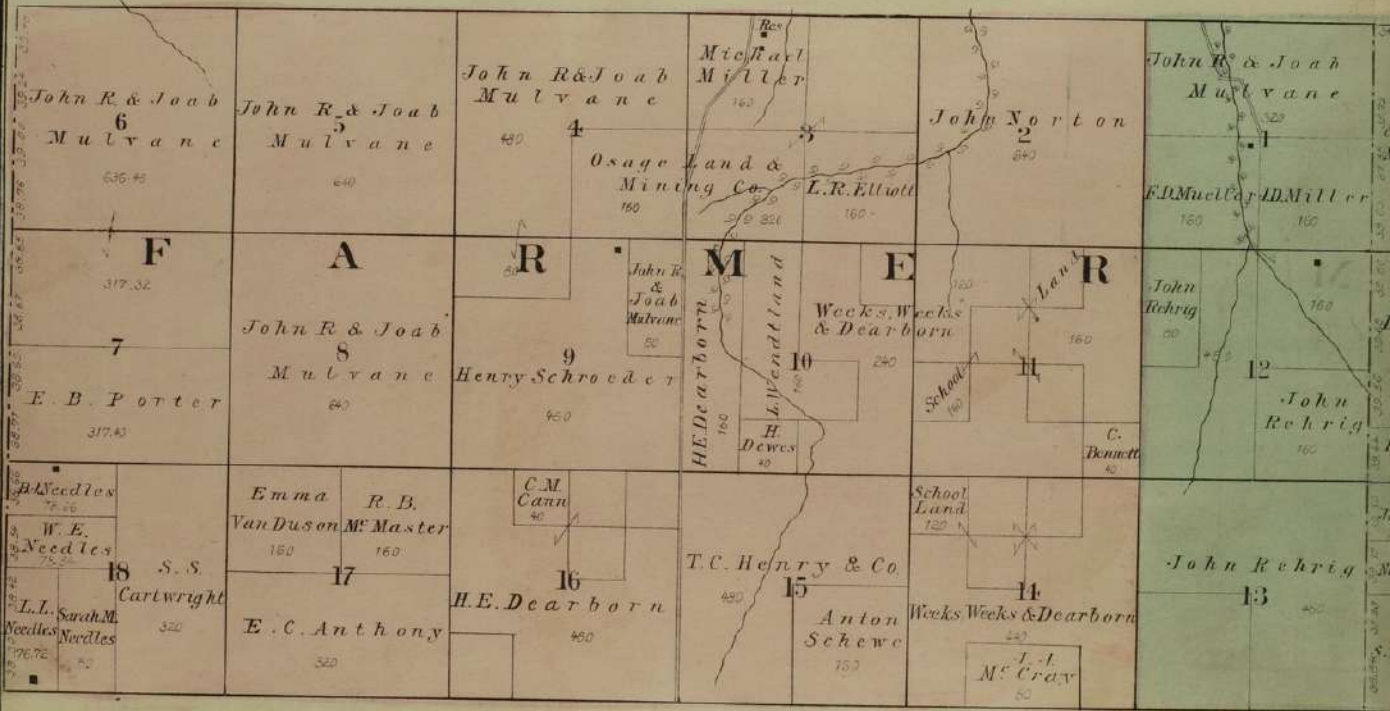


COUNTY ATLAS

WASHINGTON.

East of 6th Principal Meridian.
Sixteen to a Mile.

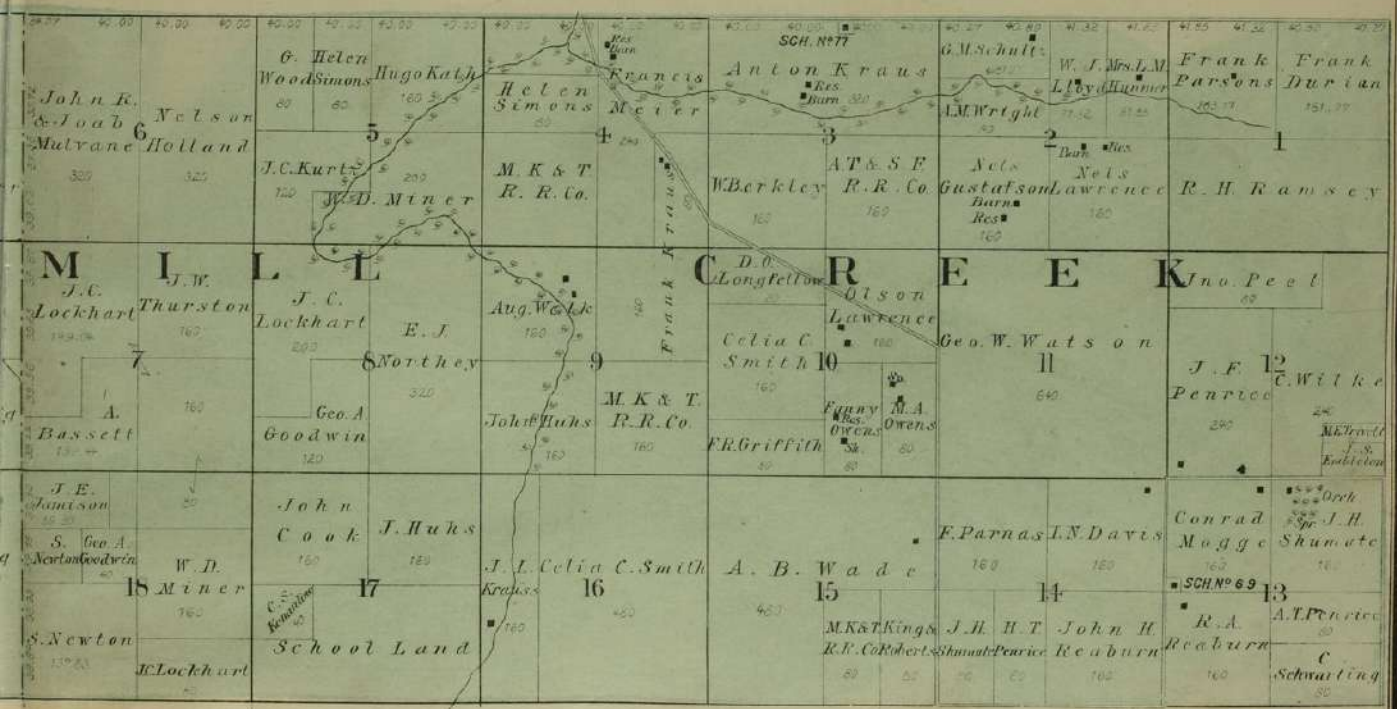
Geo. Fechter 150 4 Jos. Bent 150		T. B. Hall 3 600		L. Pearson 325 2 James Kemp 150 W.M. Milchner 150		Aug. Kietzmann 320 1 R Chas. Kietzmann 320 E	
G T L. H. Kerrick 100 9 A. E. Roberts 150		O N Henderson Burr 10 640		Henry Schmitz 320 H W. Fammens 150		Geo. Arnold 150 L. Van Goosbeck 320 12 M C. R. Masters 320 R	
John Wasson 90 C. F. Delmiter 90 Geo. Wasson 90 16 J. E. Bunce 150 Maria Davis 90		M & M. R. 15 Montgomery 640		A. Meinhard 150 14 Casper Anderson 150 Albert Meyer 150		John Ruter 90 C. Andrews 90 J. Jackson 90 H. Simon 90 A. W. Loyd 90 D. Martin 90 A. F. Loyd 90 Chambers 90 J. Bell 90	



COUNTY ATLAS

MILL CREEK.

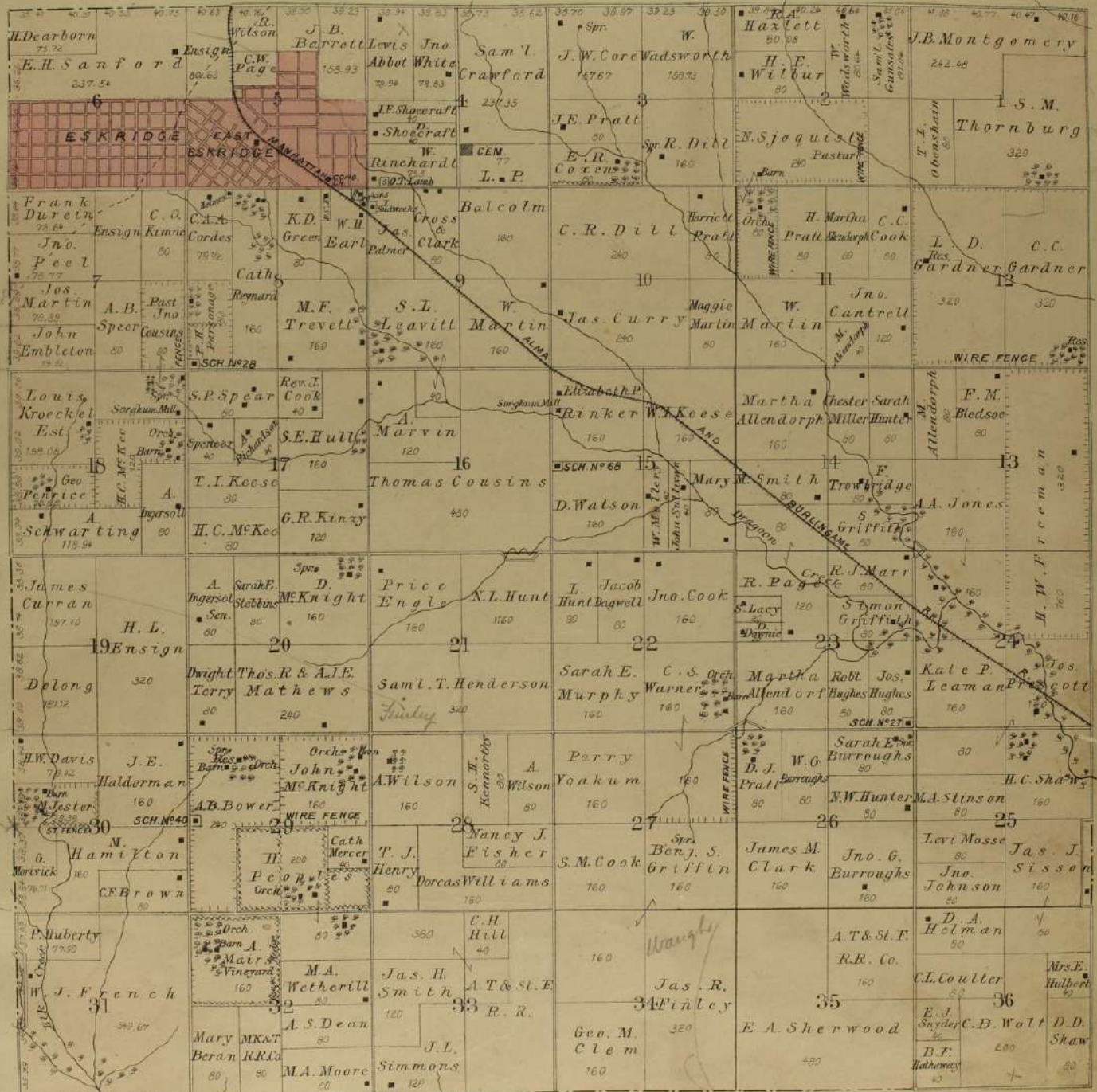
& East of 6th Principal Meridian.
miles to a Mile.



WABAUNSEE COUNTY ATLAS

WILMINGTON.

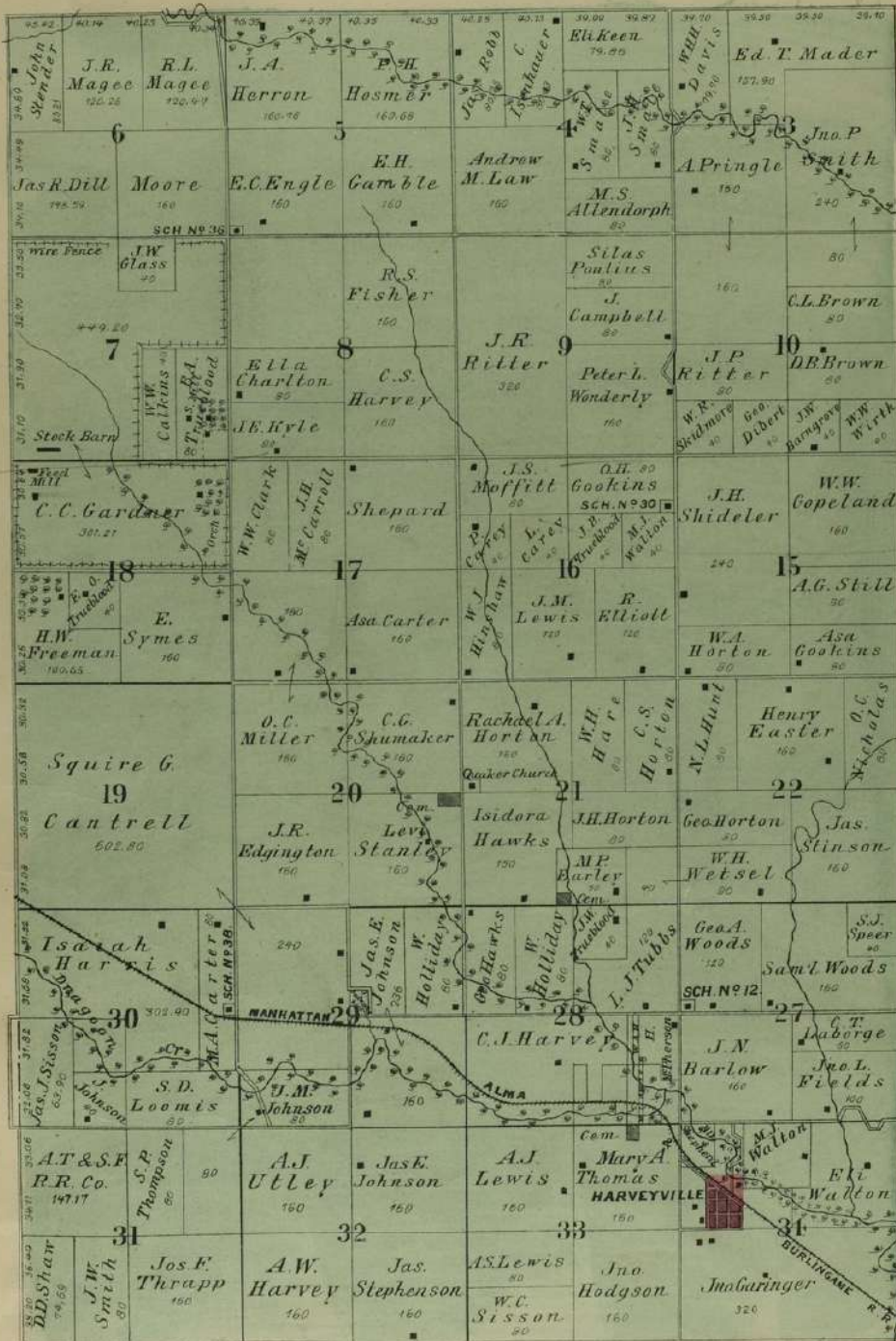
Township 14 South Range 12 East of 6th Principal Meridian.
Scale 2 Inches to a Mile.



WABAUNSEE COUNTY ATLAS

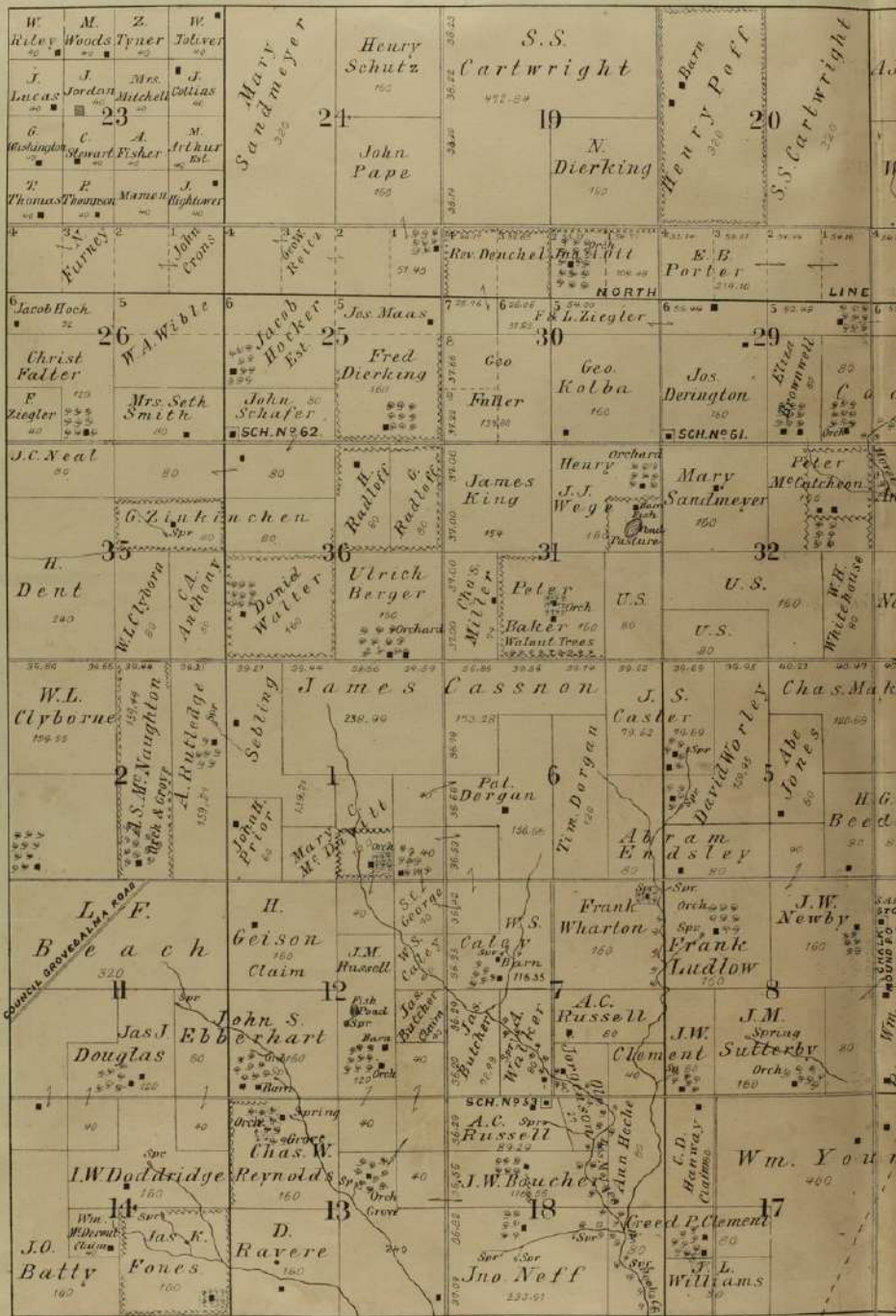
WILMINGTON.

Township 14 South Range 13 East of 6th Principal Meridian.
Scale 2 Inches to a Mile.



Keyle

Chas. Shuman
Sample



780

COUNTY ATLAS
CREEK.

East of 6th Principal Meridian.
Scales to a Mile.



6374 25, 14, 10
670-666W

H.L. Prank

15, 10

15, 10

Wm. H. Wagoner

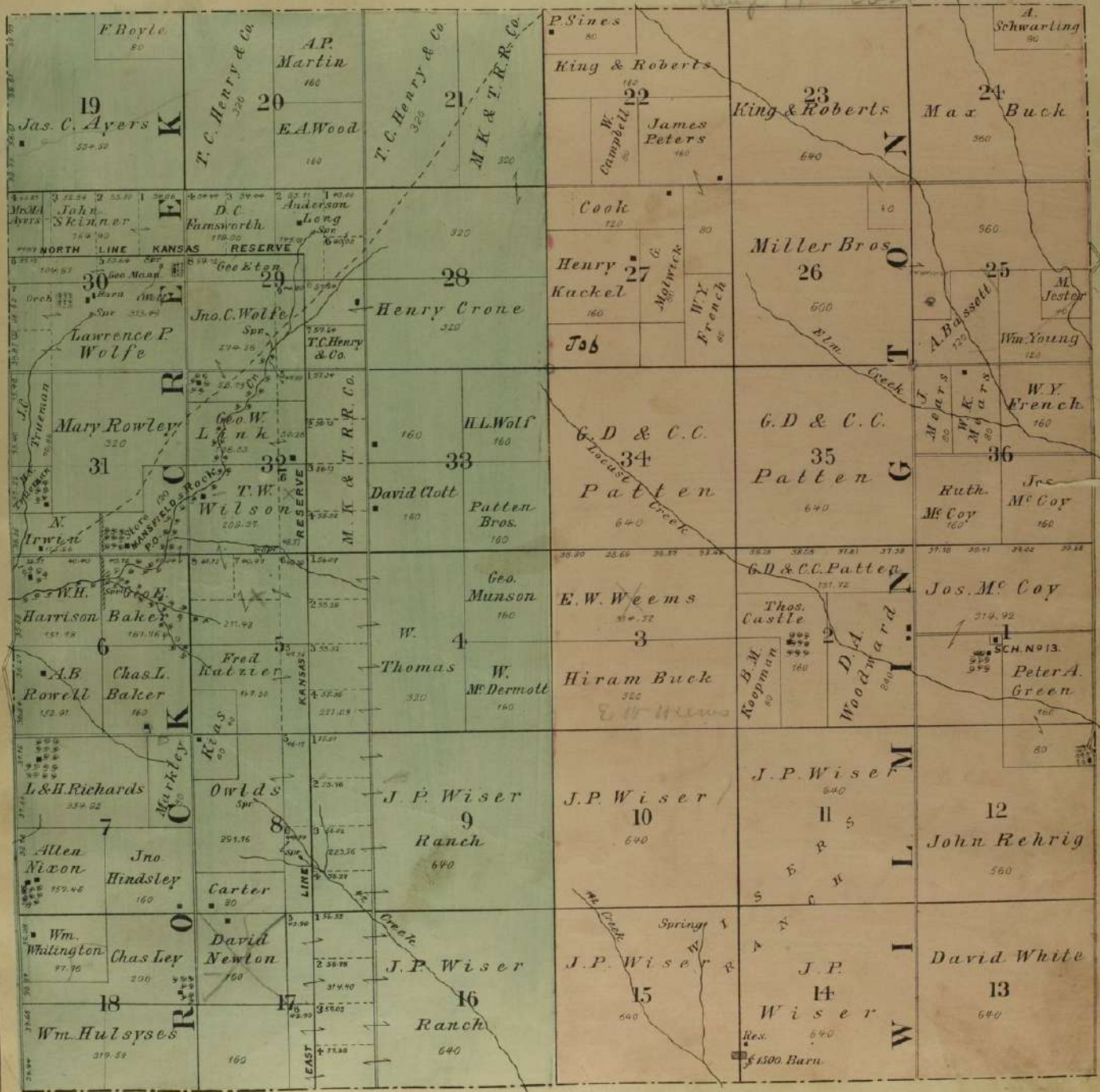
Cooper

10 Rest

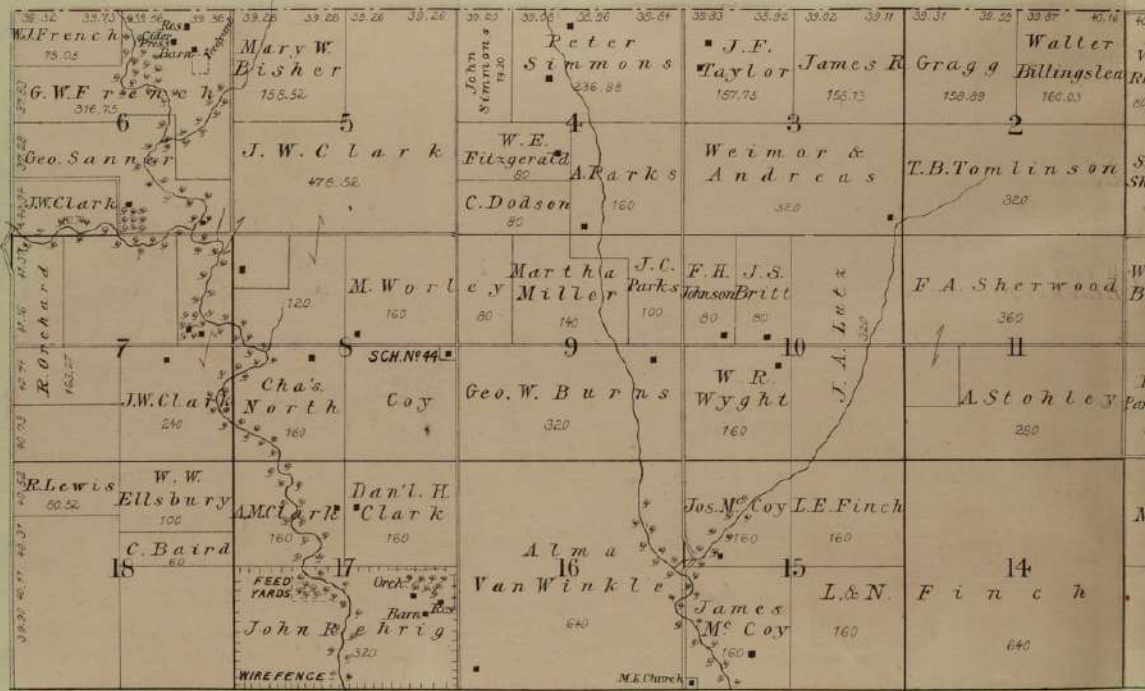
WABAUNSEE COUNTY ATLAS

ROCK CREEK & WILMINGTON

Townships 14 & 15 South Range 11 East of 6th Principal Meridian.
Scale 2 Inches to a Mile.



Houston



COUNTY ATLAS WILMINGTON.

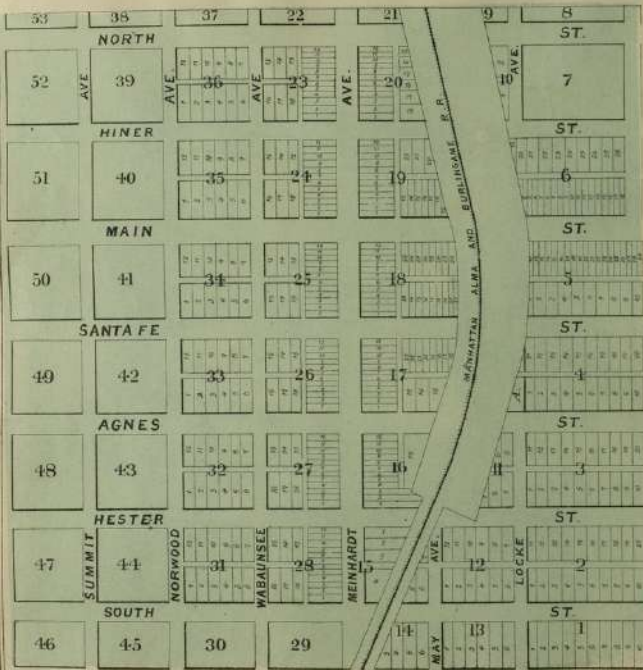


13 East of 6th Principal Meridian.
1/4 inches to a Mile.

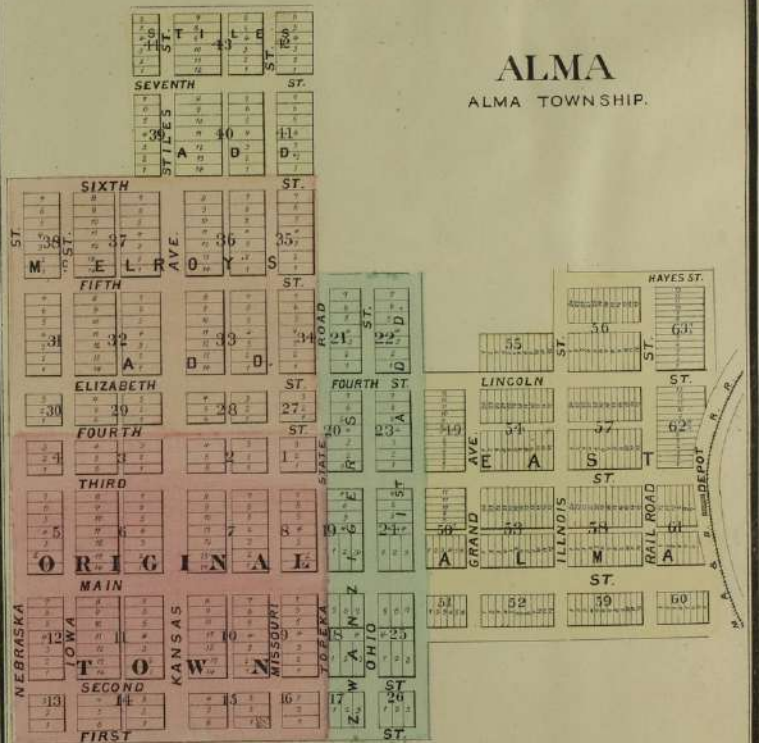
40.28 W. J. Read	40.19 W. Carter	40.11 C. S. Foster	40.04 J. B. Fixer	38.33 A. D. Fixer	38.52 W. H. Fixer	38.71 S. D. Shaw	37.25 S. D. Shaw	36.96 W. M. Jones	37.53 W. M. Jones	37.66 W. C. Sisson	37.06 J. J. Nichols	39.07 M. J. Walton	37.97 M. J. Walton	37.87 J. J. Nichols	37.79 J. J. Nichols	37.75 M. J. Walton	37.92 A. S. T. Walton	37.72 J. J. Nichols	37.75 J. J. Nichols
80.24 S. N. Shaw	80.19 W. Shaw	80.11 C. Meeker	80.04 B. M. Shumate	76.50 Jno. Shaw	76.56 H. P. Waters	77.20 T. J. Living	77.20 A. B. Havens	104.68 Jno. Salmon	104.26 Jno. Salmon	213.97 B. Martin	117.77 J. H. & J. N. Craig	40 David Wilson	160 A. B. Watts	160 David Wilson	160 A. B. Watts	160 A. B. Watts	160 A. B. Watts	160 A. B. Watts	155.90 J. J. Nichols
760 W. T. & G. W. Blacker	760 W. T. Blacker	SCH. N. 7 W. T. Blacker		73.05 A. Adam	160 A. Adam	160 A. Adam	160 A. Adam	160 A. Adam	160 A. Adam	160 A. Adam	160 A. Adam	160 A. Adam	160 A. Adam	160 A. Adam	160 A. Adam	160 A. Adam	160 A. Adam	160 A. Adam	160 A. Adam
80 Ed. Parnell	80 W. Tucker	80 G. E. Parmiter	80 Lord & Nelson	76.05 G. W. Watson	156.26 D. S. Fider	160 Geo. W. Watson	160 M. E. Nicolson	320 M. E. Nicolson	320 M. E. Nicolson	160 P. B. Rouch	160 A. Rouch	160 A. Rouch	160 A. Rouch	160 A. Rouch	160 A. Rouch	160 A. Rouch	160 A. Rouch	160 A. Rouch	160 A. Rouch
160 Jno. W. Musicick	160 E. L. Shumate	160 C. Meeker	312.20 C. Meeker	312.20 C. Meeker	312.20 C. Meeker	312.20 C. Meeker	312.20 C. Meeker	312.20 C. Meeker	312.20 C. Meeker	312.20 C. Meeker	312.20 C. Meeker	312.20 C. Meeker	312.20 C. Meeker	312.20 C. Meeker	312.20 C. Meeker	312.20 C. Meeker	312.20 C. Meeker	312.20 C. Meeker	312.20 C. Meeker
320 F. Ayer	320 F. Ayer	320 F. Ayer	320 F. Ayer	320 F. Ayer	320 F. Ayer	320 F. Ayer	320 F. Ayer	320 F. Ayer	320 F. Ayer	320 F. Ayer	320 F. Ayer	320 F. Ayer	320 F. Ayer	320 F. Ayer	320 F. Ayer	320 F. Ayer	320 F. Ayer	320 F. Ayer	320 F. Ayer

WILMINGTON
SCH. N. 11

FAIRFIELD
ALMA TOWNSHIP.



ALMA
ALMA TOWNSHIP.



ESKRIDGE WILMINGTON TOWNSHIP.

AVE.	19 ST.	13 ST.	17 ST.	16 ST.	15 ST.	14 ST.	13 ST.	12 ST.	11 ST.	10 ST.	9 ST.	8 ST.	7 ST.	6 ST.	5 ST.	4 ST.	3 ST.	2 ST.	1 ST.
HOLLIDAY																			
30	31	32	33	34	35	36	37	38	39	40	41	42	43	44	45	46	47	48	49
PLUMB																			
50	51	52	53	54	55	56	57	58	59	60	61	62	63	64	65	66	67	68	69
STOTLER																			
70	71	72	73	74	75	76	77	78	79	80	81	82	83	84	85	86	87	88	89
HOUSTON																			
90	91	92	93	94	95	96	97	98	99	100	101	102	103	104	105	106	107	108	109
WESTERN																			
110	111	112	113	114	115	116	117	118	119	120	121	122	123	124	125	126	127	128	129
HUNTOON																			
130	131	132	133	134	135	136	137	138	139	140	141	142	143	144	145	146	147	148	149
MCNEEKIN																			
150	151	152	153	154	155	156	157	158	159	160	161	162	163	164	165	166	167	168	169
ST. JOHN																			
170	171	172	173	174	175	176	177	178	179	180	181	182	183	184	185	186	187	188	189
FARNSWORTH																			
190	191	192	193	194	195	196	197	198	199	200	201	202	203	204	205	206	207	208	209
COWEN																			
210	211	212	213	214	215	216	217	218	219	220	221	222	223	224	225	226	227	228	229
BURKE																			
230	231	232	233	234	235	236	237	238	239	240	241	242	243	244	245	246	247	248	249
LINCOLN																			
250	251	252	253	254	255	256	257	258	259	260	261	262	263	264	265	266	267	268	269
BLAKE																			
270	271	272	273	274	275	276	277	278	279	280	281	282	283	284	285	286	287	288	289
GRANT																			
290	291	292	293	294	295	296	297	298	299	300	301	302	303	304	305	306	307	308	309
THOMSON																			
310	311	312	313	314	315	316	317	318	319	320	321	322	323	324	325	326	327	328	329
OYER																			
330	331	332	333	334	335	336	337	338	339	340	341	342	343	344	345	346	347	348	349
MC KEE																			
350	351	352	353	354	355	356	357	358	359	360	361	362	363	364	365	366	367	368	369
SANFORD																			
370	371	372	373	374	375	376	377	378	379	380	381	382	383	384	385	386	387	388	389
SOUTH																			

WILMINGTON WILMINGTON TOWNSHIP.

220	221	222	223	224	225	226	227	228	229	230	231	232	233	234	235	236	237	238	239	240
VIRGINIA																				
241	242	243	244	245	246	247	248	249	250	251	252	253	254	255	256	257	258	259	260	261
UNION																				
262	263	264	265	266	267	268	269	270	271</											

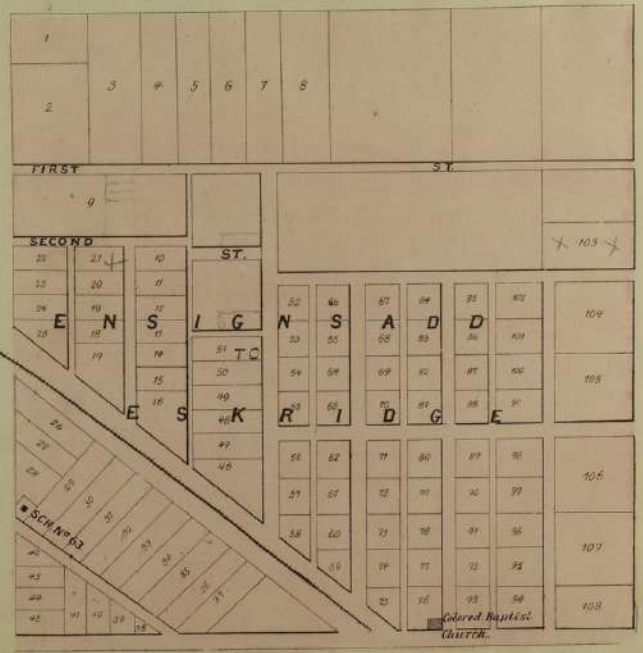
EAST ESKRIDGE

WILMINGTON TOWNSHIP.



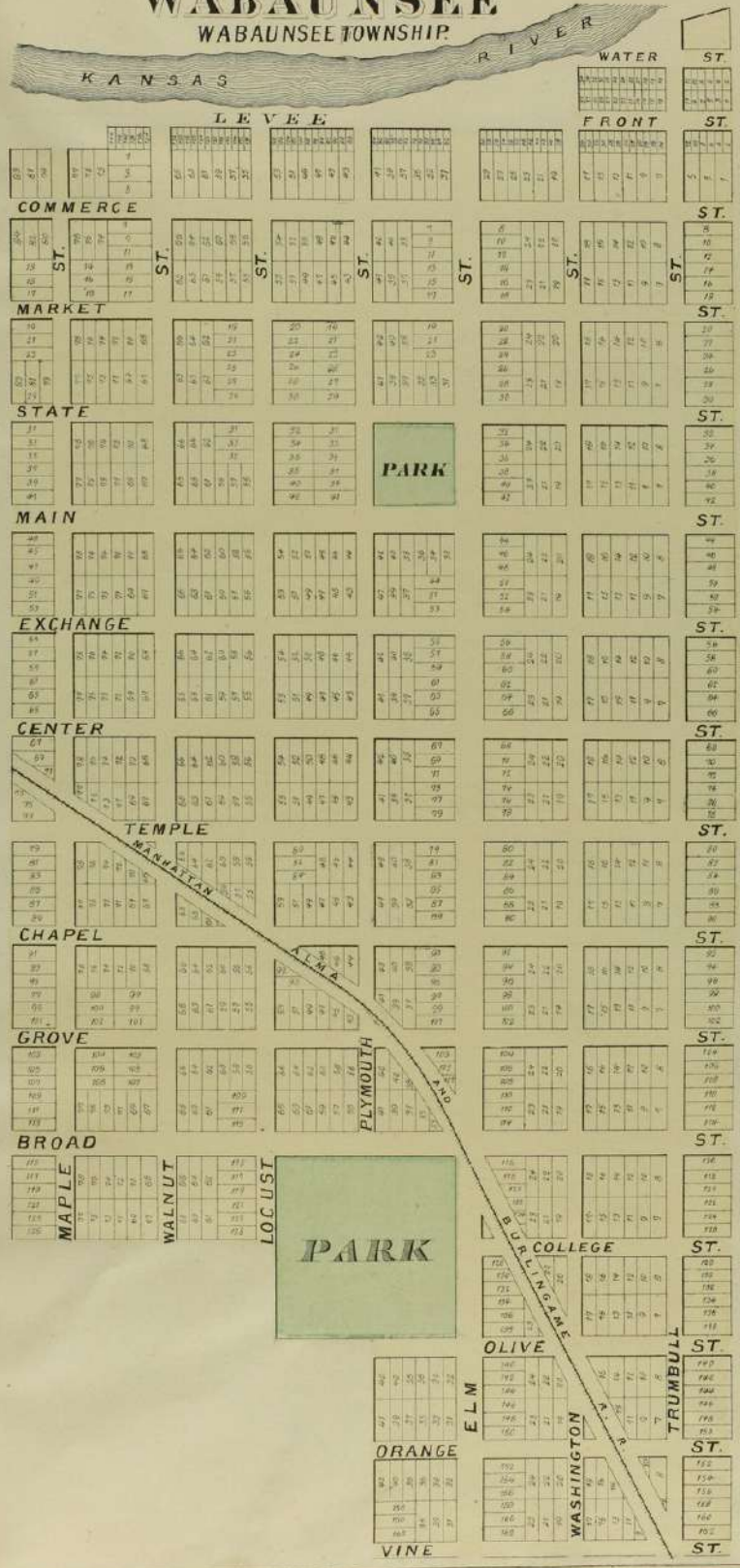
1	2	3	4	5	6	7	8
9	10	11	12	13	14	15	16
17	18	19	20	21	22	23	24
25	26	27	28	29	30	31	32

10	9	8	7	6	5	4
3			4			
1	2	3	4	5	6	7
BARR			T'S			4
10	9	8	7	6	5	4
1			2			
1	2	3	4	5	6	7



WABAUNSEE

WABAUNSEE TOWNSHIP.



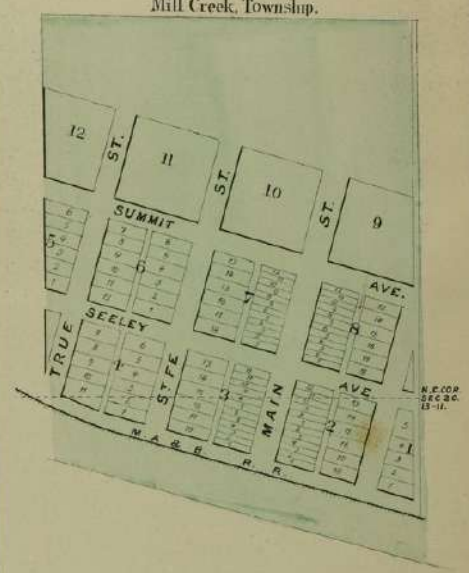
NEWBURY

NEWBURY, TOWNSHIP.

45	46	47	48
THOMAS 5 AVE.	3 AVE.	1 AVE.	ST.
SHERMAN 12	13	11 V A C A T E D	15 ST.
WABAUNSEE 19	18	PUBLIC A SQUARE	
22	23	17	24
NEWBURY 29	28	27	26
V A C A T E D	36	37	38
SHERIDAN	ST.	VACATED	VACATED
85	84	83	82
HANCOCK	ST.	VACATED	VACATED
80	81	82	83
FOURTH	SECOND	FIRST	
59	58	57	56

BISMARCK

Mill Creek, Township.



HARVEYVILLE

WILMINGTON TOWNSHIP.

