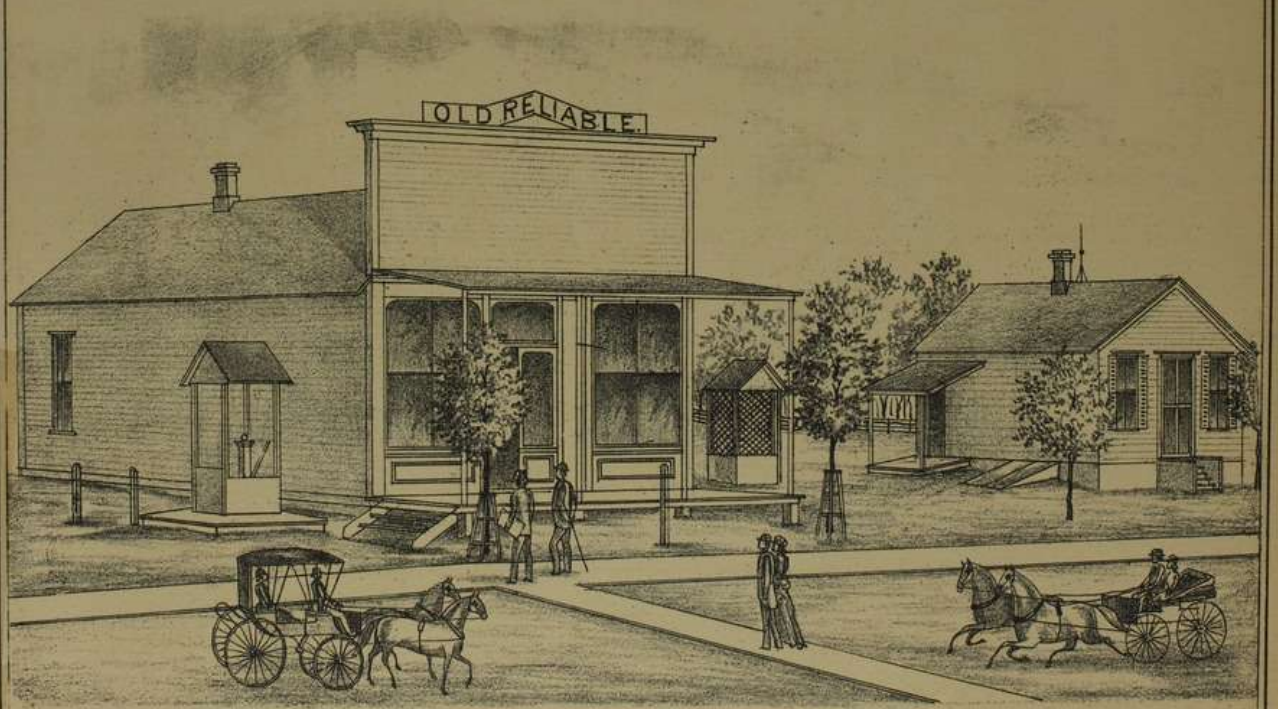




BUSINESS HOUSE OF AUGUST JAEDICKE AT HANOVER



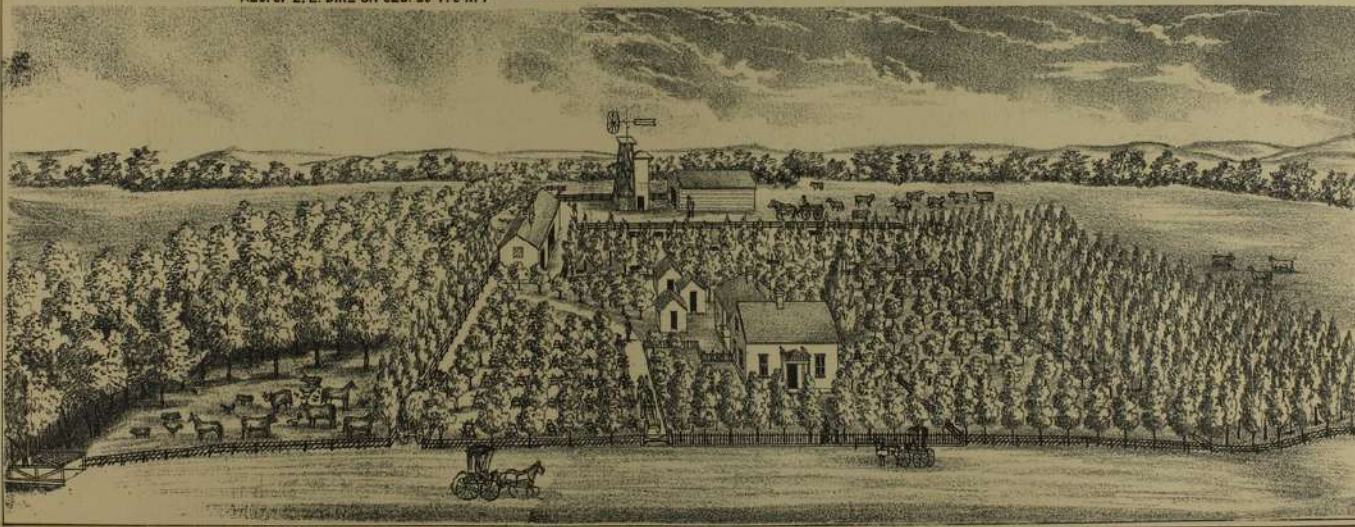
BUSINESS HOUSE & RES. OF G.F. KOBER AT PALMER



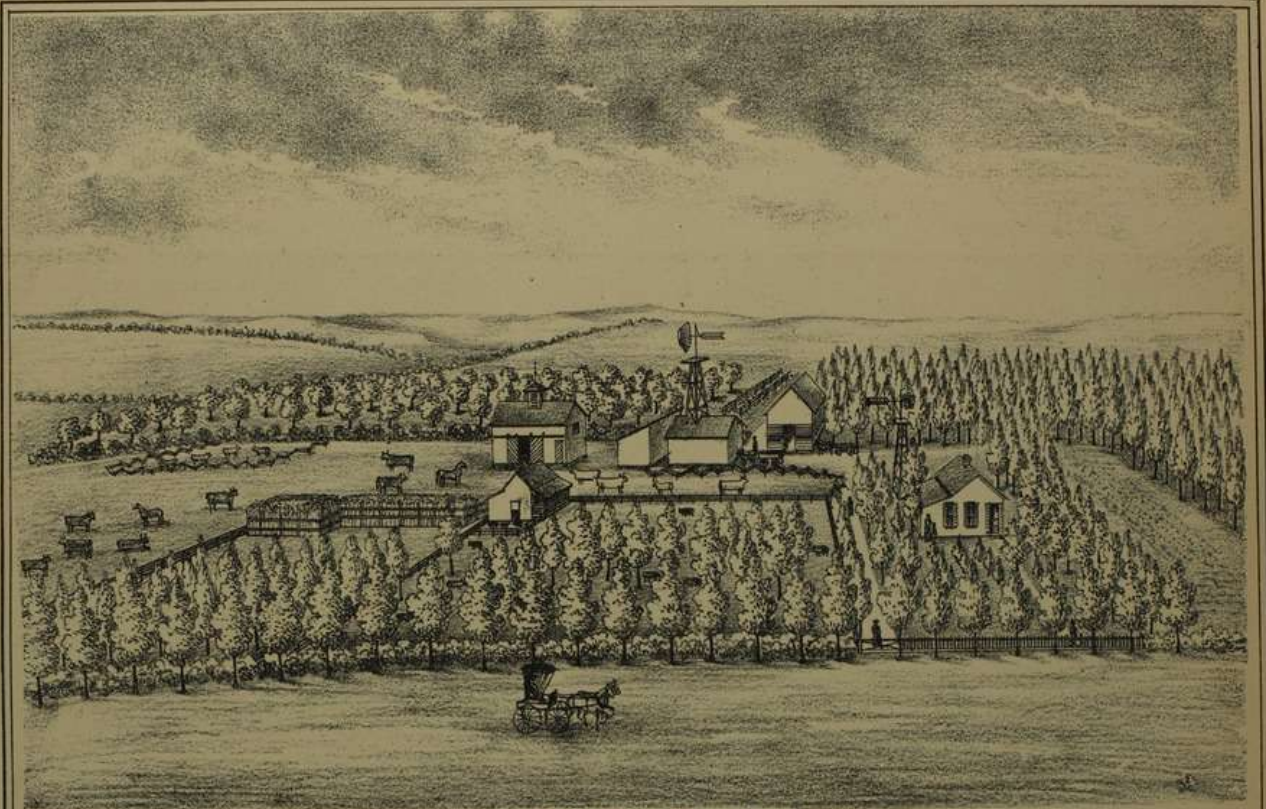
RES. OF E. E. DIKE ON SEC. 20 T. 3 R. 4



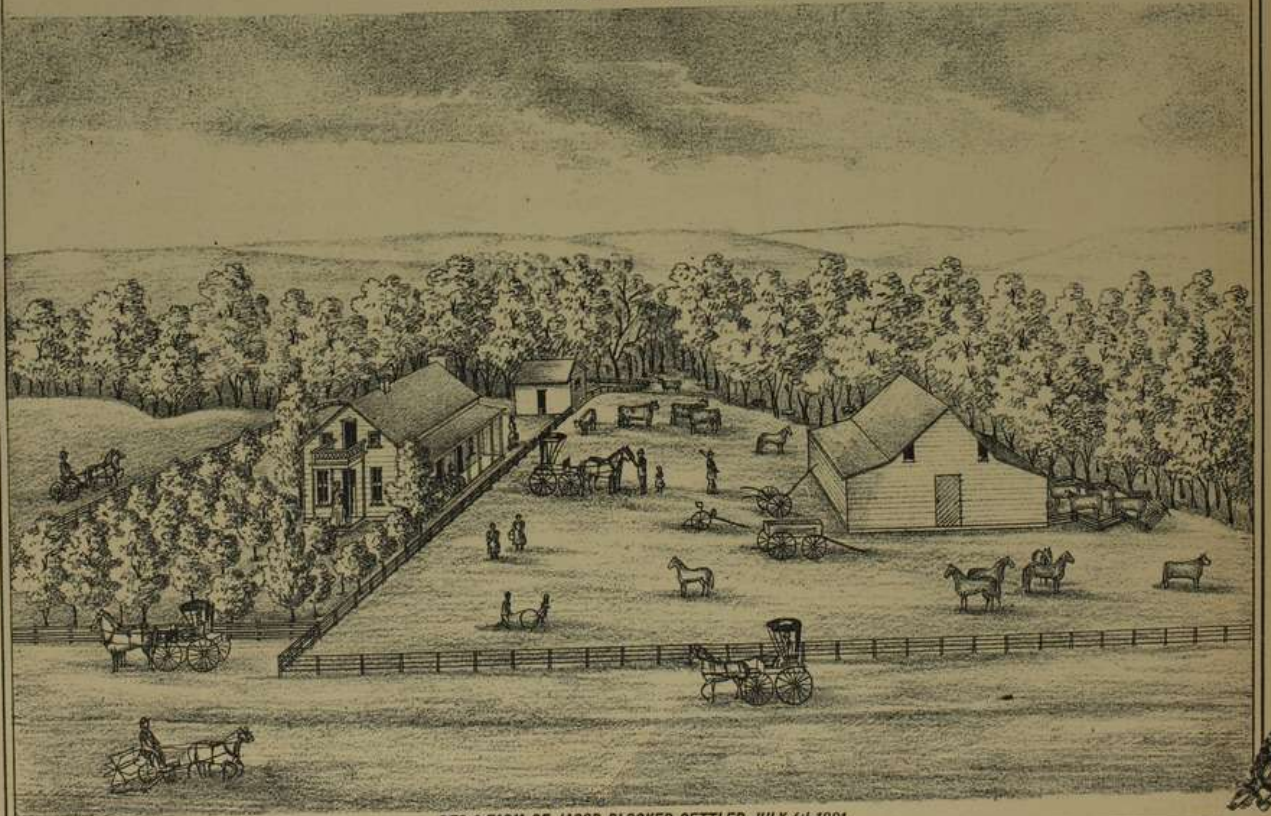
RES. OF Wm. PHILIPS ON SEC. 28 T. 3 R. 4



RES. OF JOHNSON THOMPSON 6 MILES WEST OF WASHINGTON



RES. OF L. P. DEWEY ON SEC. 17 T. 2 R. 3



RES. & FARM OF JACOB BLOCKER SETTLED JULY 4th 1881



RES. & BLACKSMITH SHOP OF S. PEABODY AT HADDAM



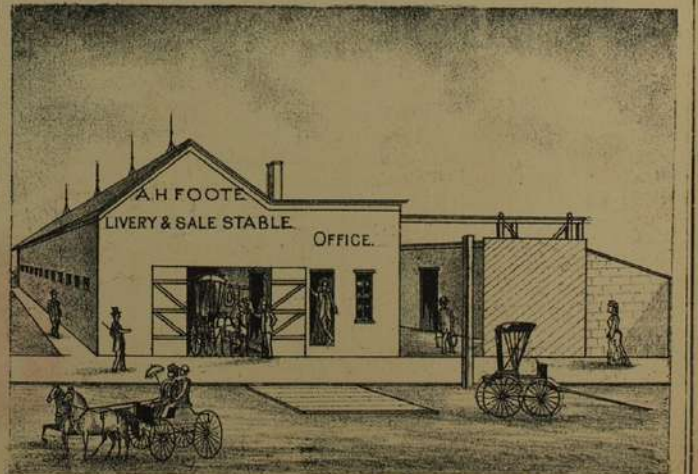
RES. OF JOHN J. MUTH AT HADDAM



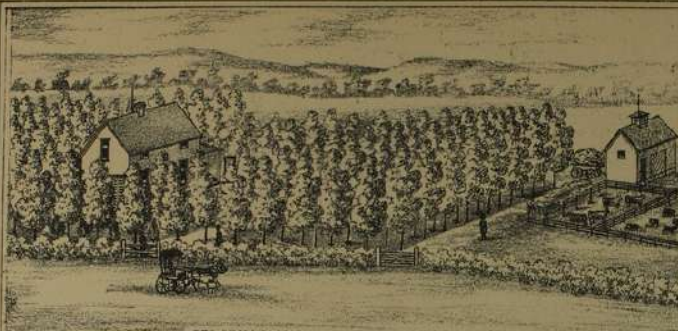
HADDAM.



BUSINESS HOUSE OF J.P. SPIERS AT PALMER



A.H. FOOTE'S LIVERY FEED & SALE STABLE WASHINGTON



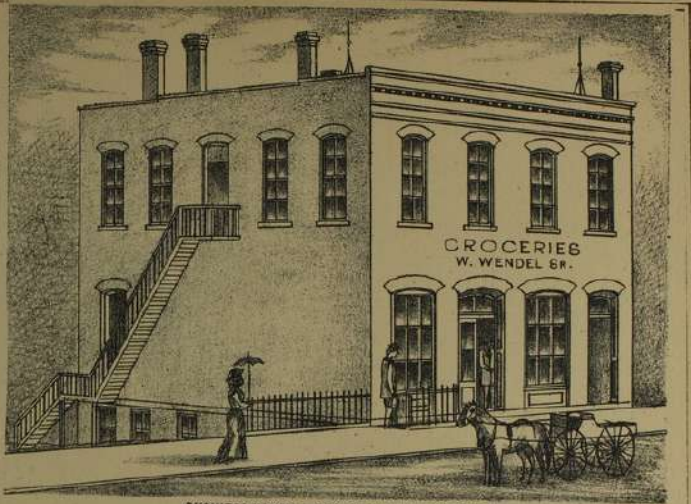
RES. OF M.L. BLACKWELDER ON SEC. 16 T. 2 R. 1



RES. OF JAMES SCOTT & MILES S. E. OF WASHINGTON



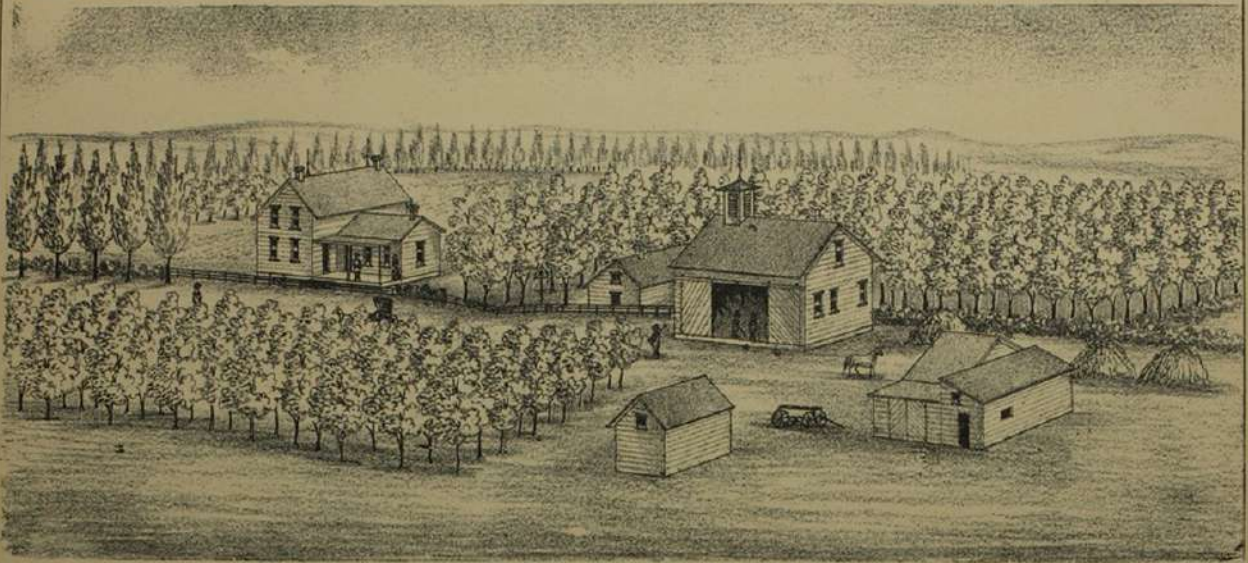
RES. OF I. H. CHASE AT HADDAM



BUSINESS HOUSE & RES. OF Wendelin WENDEL Sr.



JOHN BUNTING'S LAND & LOAN OFFICE AT HANOVER



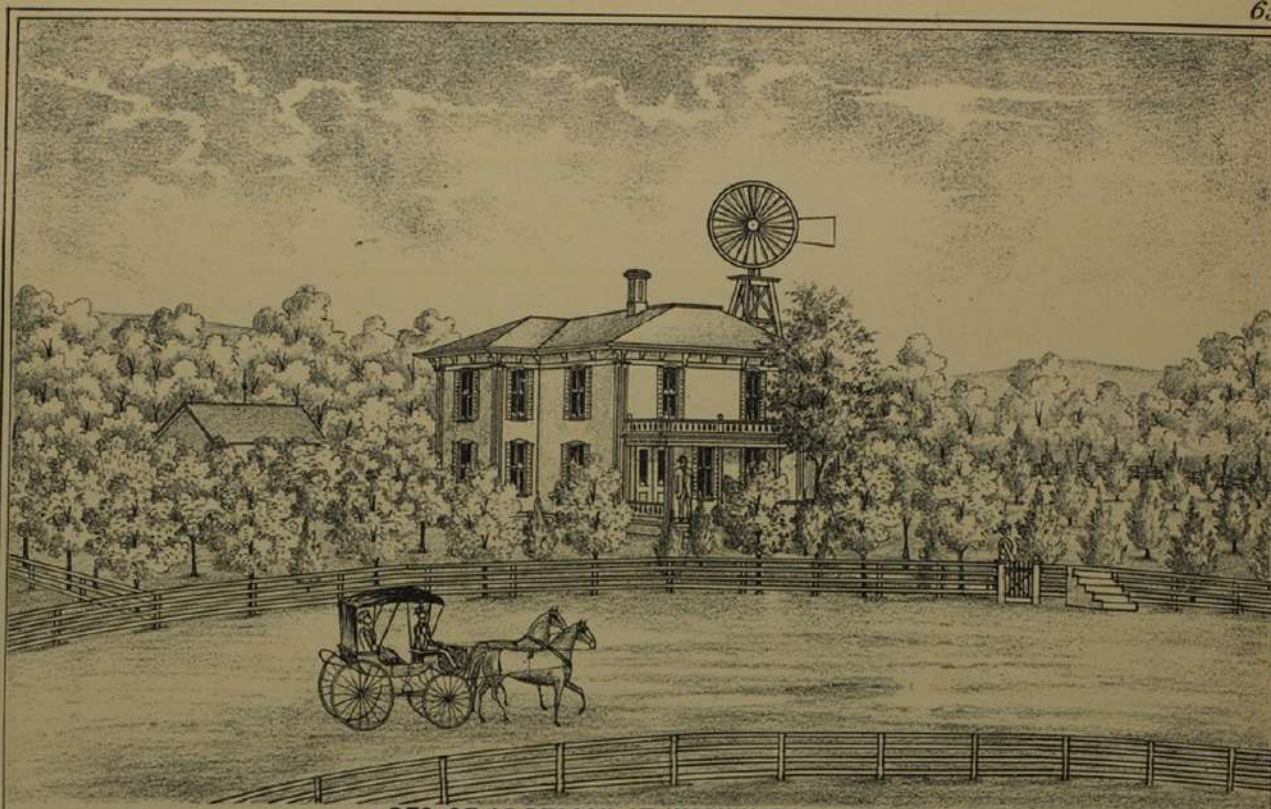
RES. OF FRANK DAMETZ ON SEC. 21 T. 3 R. 3



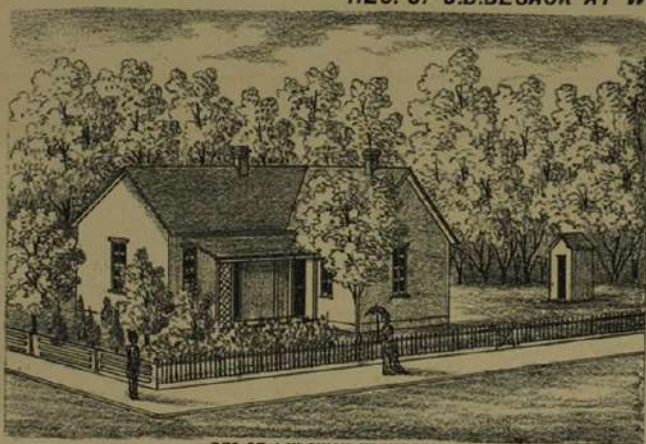
# HANOVER

Thompson's 1st. Add. Comprise Blocks 1, 2, 3, 4, 5 north of North Street.

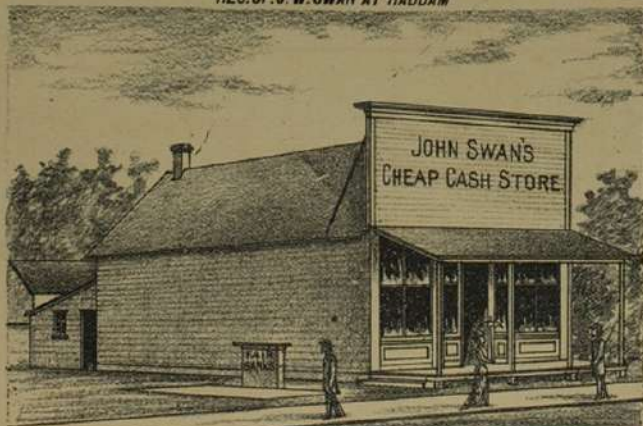
W. Kahner



RES. OF J.B.BESACK AT WASHINGTON



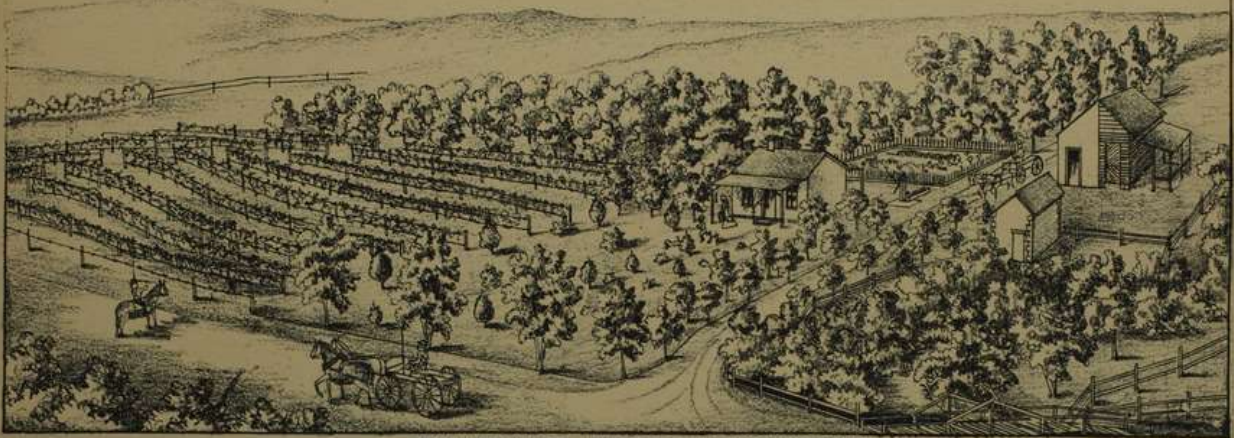
RES. OF J. W. SWAN AT HADDAM



J. W. SWAN'S STORE AT HADDAM

### GREENLEAF.



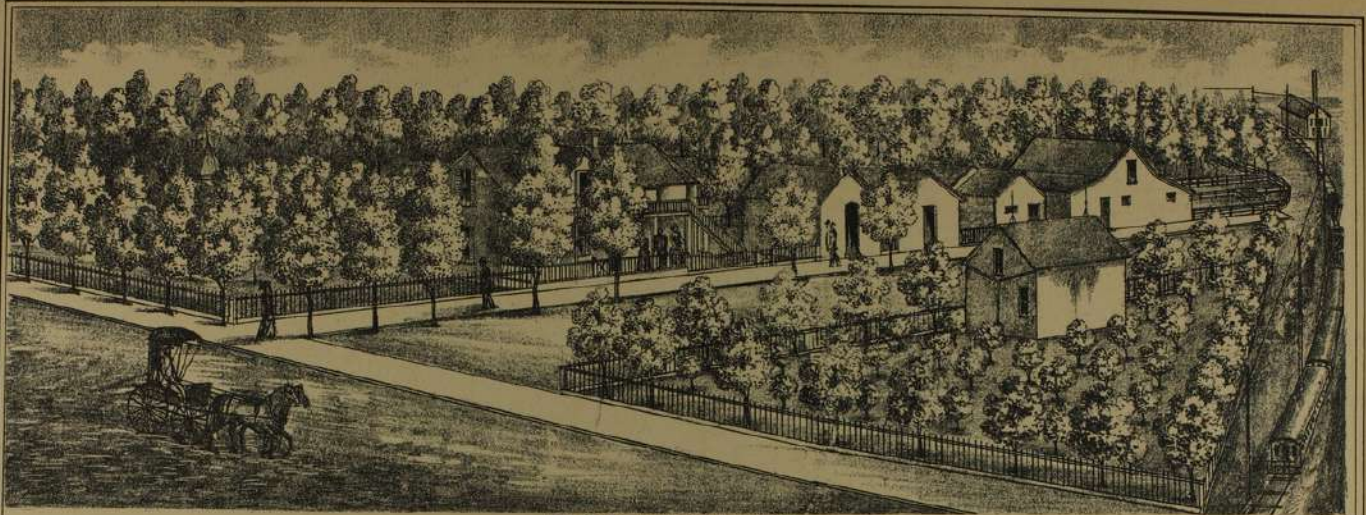


RES. & VINEYARD OF E. J. WEAKLEY 5 MILES S.W. OF WASHINGTON



FARM & VINEYARD OF G.C. PENWELL 5 MILES S.W. OF WASHINGTON

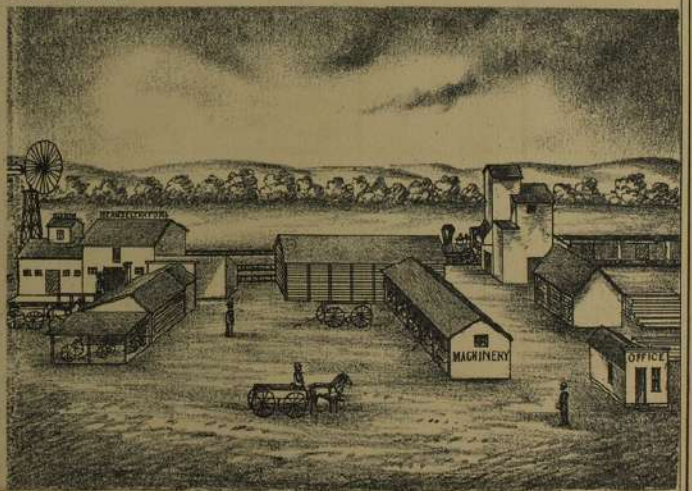




RES. OF Wm. HALHOEFER AT HANOVER.



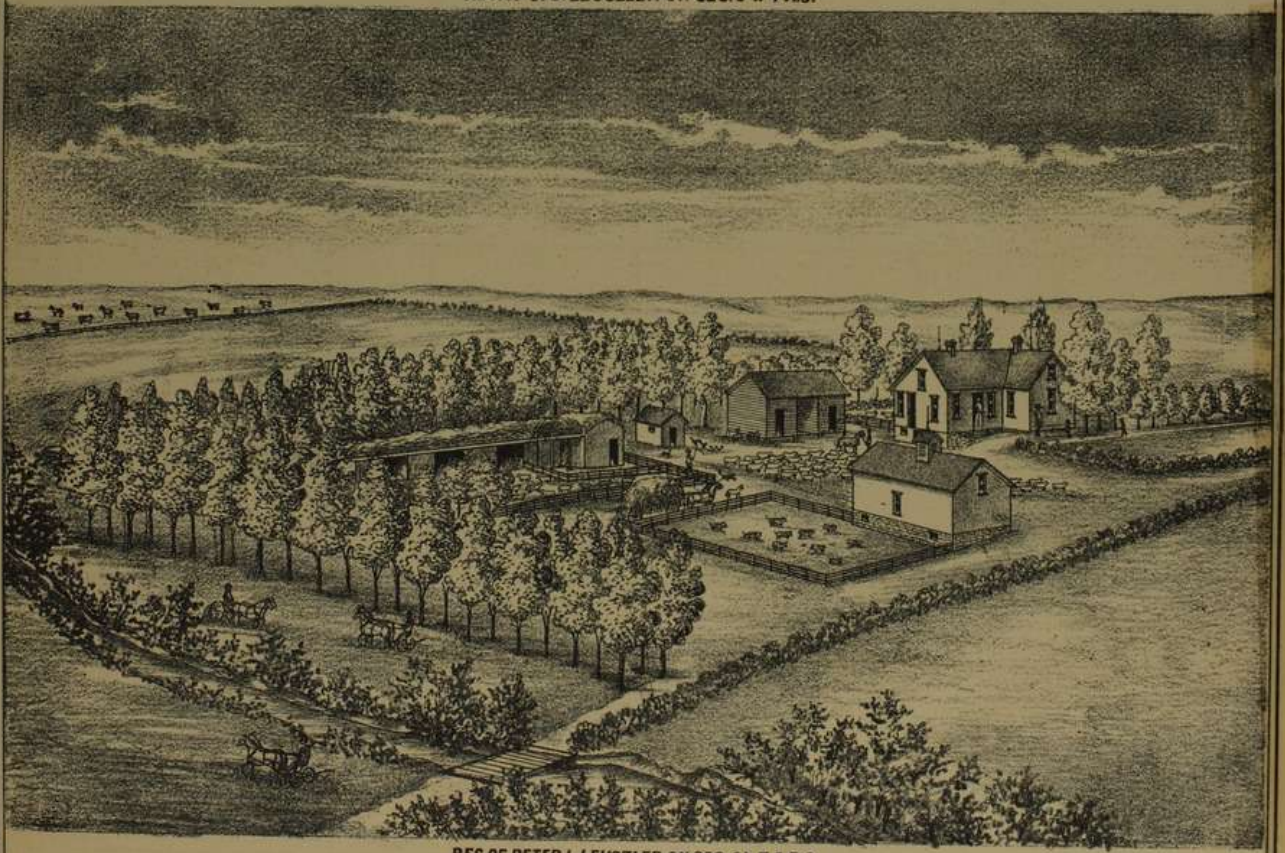
RES. & STORE OF JACOB BERNIS AT HANOVER.



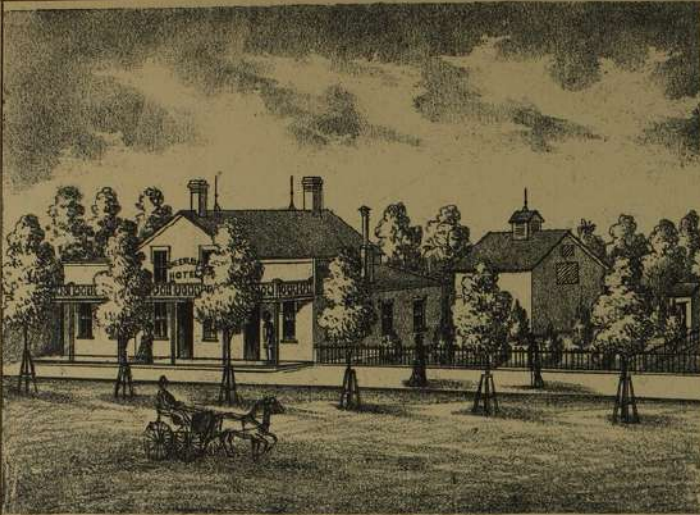
ELEVATORS, WAREHOUSE & LUMBER YARD.



RES. OF J. S. LEUSZLER ON SEC. 3 T. 4 R. 3.



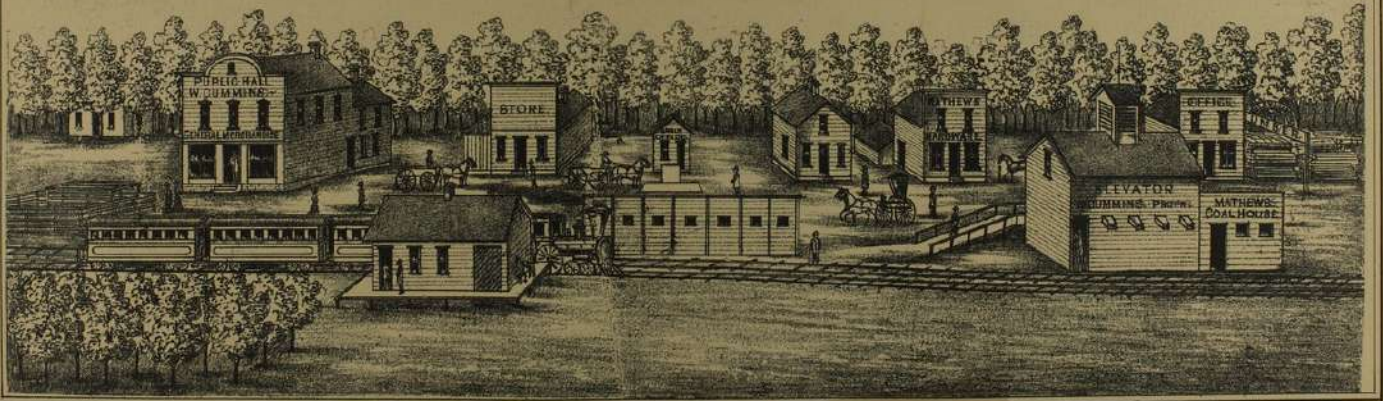
RES. OF PETER L. LEUSZLER ON SEC. 34 T. 3 R. 3.



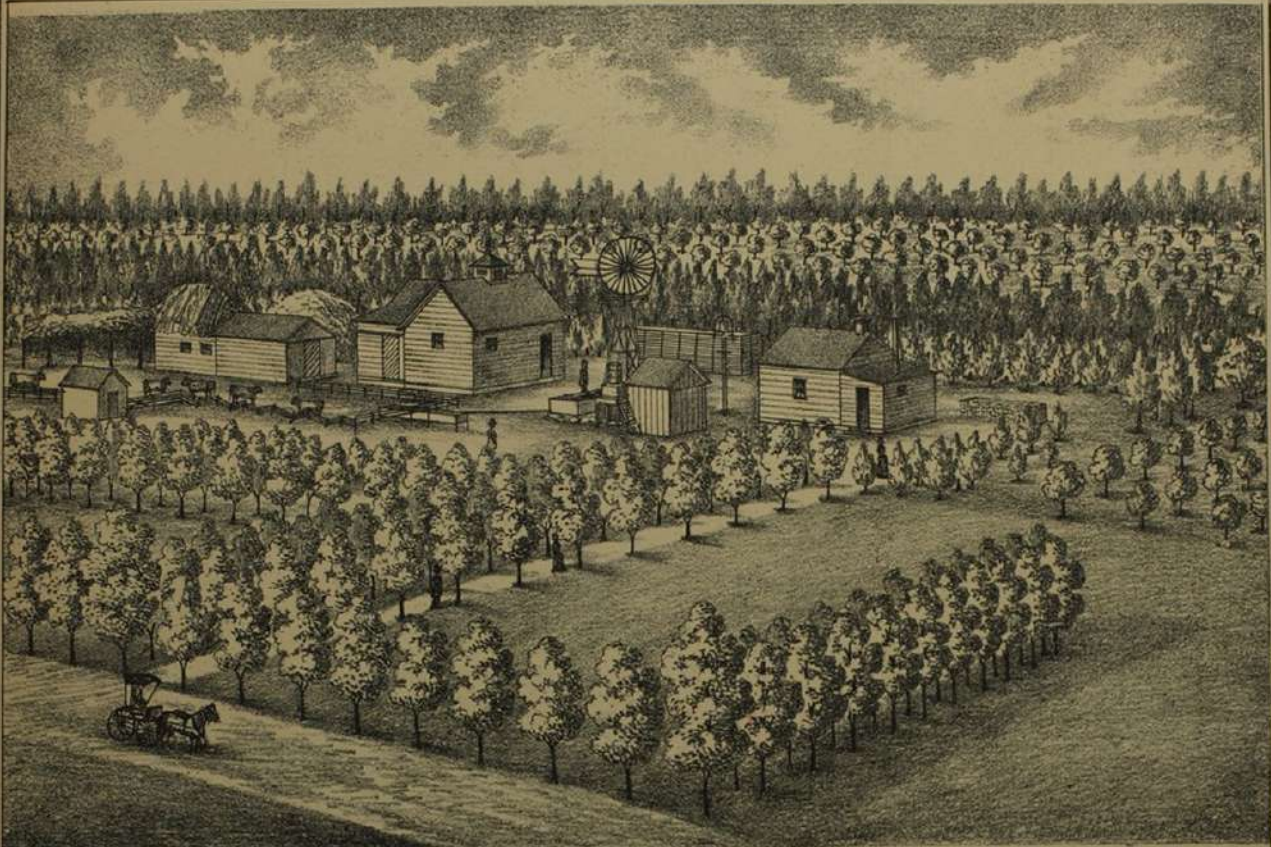
GREENLEAF HOUSE A. SNYDER PROPRIETOR.



STORE & RES. OF D. MICHELSON AT HANOVER.

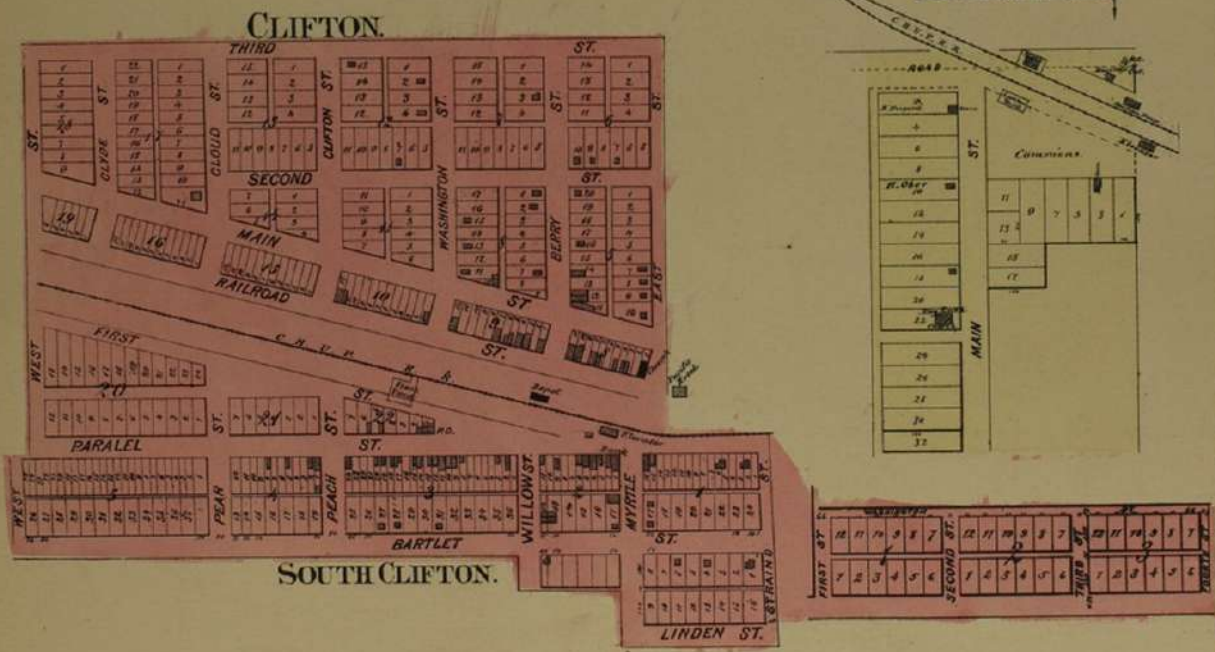


BIRDS EYE VIEW OF LINN 1881.



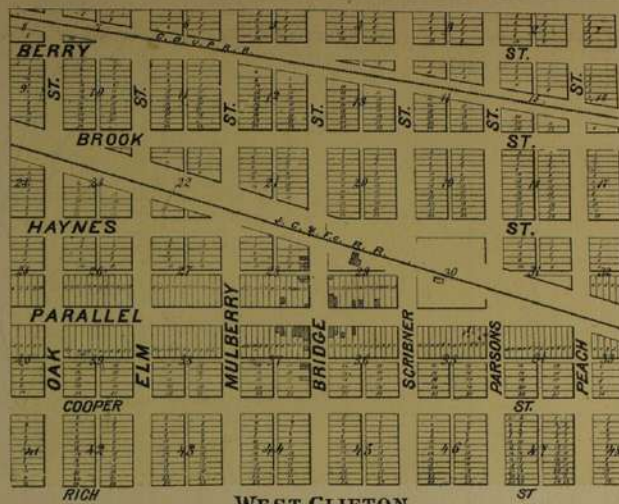
RES. OF JOHN G. BASTOW ON SEC. 5 T. 3 R. 3.

# BARNES.

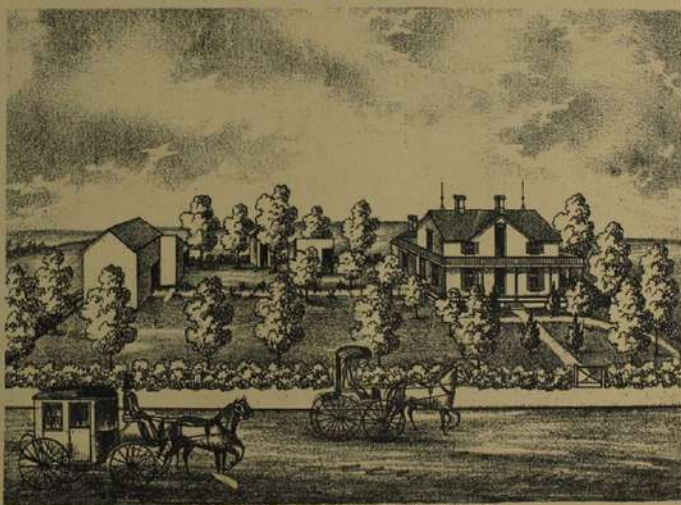




OPERA HOUSE AT WASHINGTON.



WEST CLIFTON.



RES. OF CAP. G. H. HAVEKORST AT HANOVER.

