



MARTIN PERSON
Born in Sweden in 1857. Settled in Washington County in 1873.



W. C. HALLOWELL
Chairman County Board in 1905.
Born in Ohio in 1858. Settled in Washington County in 1897.



J. T. PIEPER
Charleston.
Born in Germany in 1849. Settled in Washington County in 1885.



COURT HOUSE
Erected in 1889.



COURT HOUSE
OF 1867.



SECOND COURT HOUSE
OF 1871.



Mill Property of
T. H. PARRISH
Washington, Kansas.



NIMS HOTEL
Washington, Kansas.



T. H. CORRELL
Sheriff.
Born in Pennsylvania in 1841. Settled in Washington County in 1881.



Residence of
CHARLES GLANDER
Sec. 28 Greenleaf.



Residence of
A. M. TRISKA
Sec. 9, Little Blue Township.



ED JOHNSON
Born in Kansas November 9, 1877.



HILMA JOHNSON
Born in Sweden in 1857. Came to Kansas in 1895.



DR. E. W. SHEARBURN
Born in Illinois in 1862. Settled in Washington County in 1902.



CATHRIN SEIFERT
Born in Austria in 1835. Settled in Washington County in 1884.



FRANK SEIFERT
Born in Indiana in 1841. Settled in Washington County in 1879.



DR. M. H. HORN
Born in Germany in 1871. Settled in Washington County in 1899.



H. E. BOLLINGER, M. D.
Born in Kansas in 1871. Settled in Washington County in 1894.



HON. JAMES B. LOWER
Born in Carroll County, Illinois, in 1860. Settled in Washington county in 1870.



WILLIAM C. MUELLER
Born in Illinois in 1872. Settled in Kansas in 1882.



H. H. HENRY
Born in Illinois in 1872. Settled in Washington County in 1892.



JOHN W. SCHMITZ
Born in Indiana in 1889. Came to Kansas in 1882.



JOHN H. BURT
Born in Pennsylvania in 1870. Settled in Washington County in 1875.



A. C. HENRY
Born in Ohio in 1869. Settled in Washington County in 1886.



W. T. LLOYD
Born in Pennsylvania in 1861. Settled in Washington County in 1896.



J. W. LEIBEL
Born in Pennsylvania in 1858. Settled in Haskell, Kansas, in 1884.



W. T. ROONEY
Born in Kansas in 1868. Settled in Washington County in 1898.



CHARLES HYLAND
Born in Ohio in 1856. Settled in Washington County in 1872.



H. C. L. PEAKE
Born in Illinois in 1860. Settled in Washington County in 1884.



G. A. WELLSHER
Proprietor Palmer Index.
Born in Wisconsin in 1875. Settled in Kansas in 1889.



DR. D. J. HALLOWELL
Dentist of Haddam.
Born in Ohio in 1849. Settled in Washington County in 1869.



R. VINCENT
Born in Indiana in 1845. Settled in Washington County in 1872.



BEN SIMON
Clothes,
Born in Germany in 1853.



M. O. REITZEL
Real Estate Dealer, Washington,
Kansas.



HON. J. C. MORROW
Born in Ohio in 1845. Settled in Washington County in 1874.



S. T. YODER
Born in Pennsylvania in 1851. Settled in Washington County in 1884.



WILLIAM H. NEMITZ
Deceased.
Born in Prussia in 1828. Settled in Washington County in 1870. Died in 1899.



CHARLES T. CALLENDER
Born in Pennsylvania in 1832. Settled in Kansas in 1860.



C. P. BARLEY
Born in Ohio in 1861. Settled in Washington County in 1899.



J. W. BARLEY
Washington.



J. B. FRAGER
Born in Ohio in 1843. Settled in Washington County in 1869.



GEORGE W. GATES
Born in Maine in 1836. Settled in Washington County in 1892.



WILLIAM H. NOLL
Born in Illinois in 1847. Settled in Washington County in 1892.



HON. S. S. LONGLEY
Greenleaf.
Born in Maine in 1834. Settled in Washington County in 1869.



JACOB F. GUNDELFINGER
Born in Germany in 1834. Settled in Washington County in 1869.



W. H. RIGGS
Linn.
Born in Ohio in 1837. Settled in Washington County in 1870.



NELS G. LINDAHL
Born in Illinois in 1865. Settled in Washington County in 1899.



F. M. BRICK
Real Estate Dealer, Hadam.
Born in Indiana in 1871. Settled in Washington County in 1878.



J. J. MUTH
Born in Pennsylvania in 1820. Settled in Washington County in 1879.



GERHARD STIGGE
Born in Germany in 1830. Settled in Washington County in 1884.



JOHN STIGGE
Born in Germany in 1839. Settled in Kansas in 1870.



JAMES O. McCRONE
Grant.
Born in Kansas in 1872.



MARY C. McCRONE
Section 19, Grant T. W. P.



NICHOLAS HILTGEN
Deceased.
Born in Germany in 1842. Came to
America in 1872. Died October
3, 1902.



J. R. HERYNK and WIFE
Born in Iowa and Pennsylvania in
1864 and 1873. Settled in Wash-
ington County in 1869 and
1887.



MARY BOND
Born in Germany in 1869. Came to
Washington County in 1888.



MRS. F. N. MARTIN
Born in Missouri in 1867. Settled in
Washington County in 1876.



F. N. MARTIN
Born in Illinois in 1861. Settled in
Washington County in 1874.



H. BURT
Born in Pennsylvania in 1864. Set-
tled in Washington County
in 1875.



JOHN R. BOND
Born in Washington County in 1867.



HENRY NELSON
Born in Kansas in 1875. Settled in
Washington County in 1886.



ANNA NELSON
Born in Washington County, Kansas,
in 1875.



WILLIAM LUHRING
Born in Washington County, June 20,
1881.



ANNA WEHLING
Born in New York in 1873. Settled
in Washington County in 1872.



C. E. WEHLING
Born in Illinois in 1866. Settled in
Washington County in 1876.



MARY BOKEMEIER
Born in Illinois in 1858. Settled in
Washington County in 1894.



SAMUEL BOKEMEIER
Born in Illinois in 1856. Settled in
Washington County in 1894.



F. E. ERTEL
Born in Wisconsin in 1841. Settled
in Washington County in 1869.



CHARLES MILLER
Born in Kansas in 1871.



MRS. CHARLES MILLER
Born in Illinois in 1871. Settled in
Washington County in 1890.



W. H. RHINE and WIFE
Born in Iowa and Wisconsin in 1877 and 1882. Settled in Washington County in 1879.



JACOB WOHLGEMUTH and WIFE
Born in Switzerland and Wisconsin in 1860 and 1865, respectively. Settled in Washington County in 1883 and 1864.



JAMES PONTIUS and WIFE
Born in Indiana and Hanover, Kansas in 1853 and 1858, respectively. He settled in Washington County in 1858.



J. G. SHANLEY and WIFE
Born in Germany and Kansas in 1858 and 1867. He came to Kansas in 1886 and Washington County in 1901.



E. E. SPRADLING and WIFE
Born in Illinois in 1871 and 1877. He settled in Washington County in 1885.



JOHN F. GUNDELFINGER and WIFE
Born in Washington County in 1869 and 1872, respectively.



DICK SCHMIDT and WIFE
Born in Illinois and Kansas in 1881 and 1882, respectively.



C. L. WERNER and WIFE
Born in Washington County in 1876 and 1881, respectively.



CHARLES BUSWELL and WIFE
Born in Ohio and Wisconsin in 1858 and 1861. Settled in Kansas in 1882 and 1871.



C. J. MUELLER and WIFE
Born in Washington County in 1870 and 1874.



FRED KALHOEPFER and WIFE
Born in Germany and Kansas in 1869 and 1875.



M. T. FUNNELL and WIFE
Born in Washington County, Kansas, and Canada in 1845 and 1872. She settled in Washington County in 1901.



CHARLES A. CARLSON and WIFE
Born in Kansas and Nebraska in 1871 and 1886, respectively.



J. A. SPRADLING and WIFE
Born in Iowa and Nebraska in 1877 and 1881. Settled in Washington County in 1885.



JOSEPH W. HILTGEN and WIFE
Born in Washington County, Kansas, in 1886 and 1885.



CARL C. PETERSON and WIFE
Born in Denmark and Ohio in 1855 and 1868, respectively. Settled in Washington County in 1872 and 1885.



S. T. E. ANDREWS and WIFE
Born in Pennsylvania and Missouri in 1863 and 1867. Settled in Washington County in 1885 and 1884.



C. G. RYSER and WIFE
Born in Switzerland in 1877 and 1880. Settled in Washington County in 1893 and 1901.



EIDE WOLTJE and WIFE
Born in Germany in 1844 and 1850. Settled in Washington County in 1859.



HERBERT HYLAND and WIFE
Born in Iowa in 1850 and 1869. Settled in Washington County in 1869 and 1897.



WILLIAM ALLERHEILIGEN
Born in Germany in 1848. Settled in Washington County in 1887.



CHRISTINA ALLERHEILIGEN
Born in Germany in 1822. Came to America in 1869.



MRS. ETTA HARMON
Born in Maine in 1851. Settled in Kansas in 1879.



W. D. HARMON
Born in Ohio in 1847. Settled in Kansas in 1879.



W. D. HART
Physician at Haddam. Born in Missouri in 1867. Settled in Washington County in 1899.



ANNA RUHKAMP
Born in Germany in 1846. Settled in Washington County in 1886.



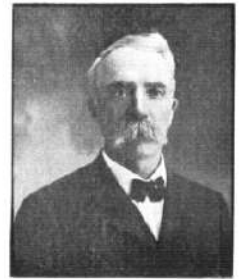
HENRY RUHKAMP
Born in Germany in 1849. Settled in Washington County in 1886.



MRS. L. A. WERTMAN
Born in 1827. Settled in Kansas in 1859.



MRS. DAVID COOK
Logan. Born in Illinois in 1862. Settled in Washington County, Kansas, in 1877.



DAVID COOK
Logan. Born in Ohio in 1848. Settled in Washington County in 1855.



J. P. SERLES
Born in Knox County, Illinois, in 1848. Settled in Kansas in 1869.



MRS. F. E. SERLES
Born in Genesee County, New York, in 1857.



ZANAS MAY
Born in Missouri in 1875. Settled in Washington County in 1880.



BETTIE NELSON.
Born in Sweden in 1859. Settled in Washington County in 1881.



A. P. NELSON
Born in Sweden in 1849. Settled in Washington County in 1881.



URSIE TOWNSEND
Born in Indiana in 1851. Came to Washington County in 1888.



J. M. TOWNSEND
Born in Iowa in 1851. Settled in Washington County in 1881.



MRS. LILLIE LYONS
Born in Ohio in 1855. Settled in Washington County in 1872.



M. S. McLEOD
Born in Canada in 1891. Settled in Washington County in 1874.



MRS. DORA McLEOD
Born in Iowa in 1861. Settled in Washington County in 1889.



JOHN W. WEBER and WIFE
Born in Germany in 1822 and 1826
Settled in Washington County
in 1883



S. L. NAYLOR and WIFE
Born in Illinois in 1829 and 1829. Set-
tled in Washington County in
1885



H. C. SPEERS and WIFE
See in Farmington.
Born in Pennsylvania and Illinois in
1818 and 1821. Settled in Wash-
ington County in 1871.



WILLIAM WIETERS and WIFE
Born in Germany and Kansas in 1822
and 1821. Settled in Washing-
ton County in 1887 and 1870.



J. B. BOERNER and WIFE
He was born in Germany in 1827. Set-
tled in Washington County in
1883.



RILEY CHAPPELL and WIFE
Born in Indiana and born in 1828 and
1821, respectively. Settled in
Washington County in 1880
and 1870.



R. WASER and WIFE
See in Farmington.
Born in Switzerland in 1829 and 1825.
Settled in Washington County
in 1885.



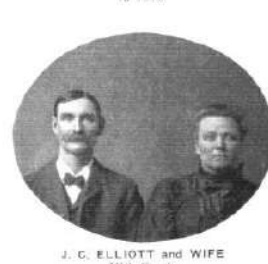
WILLIAM LUEHRING and WIFE
He was born in Germany in 1826.
Settled in Washington County in
1874. She was born in
Washington County in
1878.



FERDINAND MARTIN and WIFE
Born in 1822 and 1825, respectively.
Settled in Kansas in 1866.



CHARLES B. WILTZIUS and WIFE
CHEROKEE
Born in Washington County, Kansas,
in 1880.



J. C. ELLIOTT and WIFE
Mill Creek.
Born in Pennsylvania and Washing-
ton County in 1829 and 1822.
He settled in Washington
County in 1879.



HENRY EIPPER and WIFE
He was born in Washington County
in 1870.



E. H. PRALL and WIFE
Born in Ohio and Indiana in 1827 and
1844. Settled in Washing-
ton County in 1891.



C. CARLSON and WIFE
AIXEN
Born in Sweden in 1844 and 1851. Set-
tled in Washington County
in 1871.



GODFREY MEYER and WIFE
Born in Switzerland in 1822, Nov. 21
and April 17, respectively. Set-
tled in Washington County
in 1887.



AUGUST LUEHRING and WIFE
Born in Washington County and Ger-
many in 1876 and 1883, respec-
tively.



G. H. NUTSCH and WIFE
Born in Germany and Wisconsin in
1844 and 1854. Settled in Wash-
ington County in 1878.



JOHN P. HILL and WIFE
Born in Ohio and Kentucky in 1822
and 1822. Settled in Washing-
ton County in 1899 and 1891.



F. S. JOHNSON and WIFE
Born in Ohio in 1826 and 1822. Set-
tled in Washington County in
1872 and 1878.



PETER SPENCE and WIFE
Section 16, Kimoos Township.



J. W. FRAGER and WIFE
Born in Michigan and Illinois in 1853 and 1854. Settled in Washington County in 1874 and 1876.



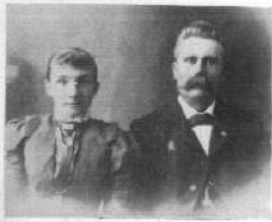
HENRY WEICHMAN and WIFE
Born in Germany and Ohio in 1862 and 1868, respectively. Settled in Washington County in 1880 and 1884.



G. M. YHOMAS and WIFE
Mill Creek.
Born in Kentucky in 1846 and 1848. Settled in Washington County in 1874.



HENRY H. KREINSIECK and WIFE
He was born in Germany in 1855 and died in Washington County, Kansas April 21, 1904. She was born in Iowa in 1859. Settled in Washington County in 1869.



FANK GERLEVE and WIFE
Josephine.
Born in Germany in 1854 and 1862. Settled in Washington County in 1882.



H. C. WRIGHT and WIFE
Born in Ohio in 1845 and 1841. Settled in Washington County in 1900.



WILLIAM ROSE and WIFE
Born in Germany in 1846 and 1842. Settled in Washington County in 1869.



J. W. SCHAICH and WIFE
Born in Iowa in 1852. Settled in Washington County in 1886.



J. H. JONES and WIFE
Born in Wales and Minnesota in 1861 and 1865. Settled in Washington County in 1893.



D. EVERETT BALLARD and WIFE
Born in Ohio in 1837 and 1858. Settled in Washington County in 1895.



DIEDRICH WICHMANN and WIFE
He was born in Germany in 1844. Settled in Washington County in 1886.



JOHN BOND and WIFE
Born in England and Ohio in 1824 and 1829. Settled in Washington County in 1860 and 1866. Died in 1902 and 1889.



ELMER GROUT and WIFE
Naney.
Born in New York and Indiana in 1839 and 1850, respectively. Settled in Washington County in 1878.



A. E. NELSON and WIFE
Born in Sweden in 1845 and 1855. Settled in Washington County in 1880.



ROBERT PRUITT and WIFE
Coleman.
Born in Tennessee and Iowa in 1830 and 1847. Settled in Washington County in 1884.



FRED BROCKMEYER and WIFE
Born in Germany in 1832 and 1843. Settled in Washington County in 1868.



ALBERT TEGETHOFF and WIFE
Logan.
Born in Germany in 1840 and 1855. Settled in Washington County in 1883.



MARTIN HEID and WIFE
Born in Pennsylvania in 1840 and 1848. Settled in Washington County in 1877.



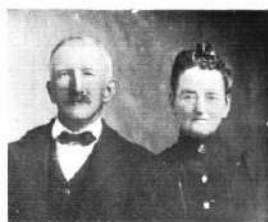
FRANK LANDALL and WIFE
Born in Germany and Ohio in 1853 and 1854. Settled in Washington County in 1879.



J. T. SUMMERS and WIFE
Born in Virginia and Illinois in 1851 and 1852. Settled in Washington County in 1876.



ANTHONY TRISKA and WIFE
Born in Bohemia in 1857 and 1867.
Settled in Washington County
in 1874 and 1881.



C. R. NYCE and WIFE
Born in Pennsylvania in 1829 and
1851. Settled in Washington
County in 1889.



MRS. L. E. TOTTEN and HUSBAND
Born in Ohio and New York in 1842
and 1836. Settled in Washington
County in 1879.



GEORGE HYLAND and WIFE
Born in Ohio and Washington Coun-
ty, Kansas, in 1879 and 1874.
He settled in Washington
County in 1872.



G. A. NICHOLS and WIFE
Born in Pennsylvania and Indiana in
1849 and 1849. Settled in Wash-
ington County in 1874.



JOHN ZENGER and WIFE
Born in Switzerland in 1835 and 1865.
Settled in Kansas in 1884 and
1889.



DIEDRICH LEVIEN and WIFE
Born in Germany in 1846 and 1828,
respectively. Settled in Wash-
ington County in 1879.



HENRY BEKEMEYER and WIFE
Born in Germany in 1869. Settled in
Washington County in 1887.



WILLIAM LICHT, JR. and WIFE
Born in Washington County in 1872
and 1881, respectively.



JAMES HYLAND and WIFE
Born in Ohio and England in 1847
and 1849. Settled in Washing-
ton County in 1871.



C. F. SCHWERDTFEGER and WIFE
Born in Indiana and Illinois in 1839
and 1849. Settled in Washing-
ton County in 1881.



RASMUS JORGENSON and WIFE
Logan,
Born in Denmark in 1855 and 1851.
Settled in Washington County
in 1874.



HENRY GUS MENGERS and WIFE
Born in Germany and Kansas in 1863
and 1866. Settled in Washing-
ton County in 1885 and 1886.



HENRICH LUHRING and WIFE
Born in Germany in 1824 and 1828.
Settled in Washington County
in 1867. She died in 1904.



JACOB WERNER and WIFE
Born in Switzerland and Germany in
1827 and 1837, respectively.



JOHN P. MEINEN and WIFE
Born in Germany and Pennsylvania
in 1845 and 1863, respectively.



JACOB RYSER and WIFE
Born in Switzerland and Germany in
1846 and 1856, respectively.



Farm Residence of
ROBERT MCGREGOR
Mill Creek.



Residence of
CLARA CANFIL and SON ORSON
Haddam.
She was born in England in 1852.
Settled in Washington County
in 1870.



D. M. ALLEN and WIFE
Born in Ohio and Virginia in 1869
and 1868. Settled in Kansas in
1884 and 1878.



JOSEPH MARTIN
Born in Illinois in 1848. Settled in Washington County in 1866.



MRS. JOSEPH MARTIN
Born in Wisconsin in 1841. Settled in Washington County in 1860.



FRANK NUTSCH
Born in Germany in 1847. Settled in Washington County in 1882.



MRS. GENE McCALL
Born in Ohio in 1872. Settled in Washington County in 1888.



GENE McCALL
Born in Iowa in 1872. Settled in Washington County in 1888.



EVA B. CORNWELL.
Born in Iowa in 1874. Came to Washington County, Kansas, in 1889.



EDWARD C. CORNWELL
Born in Haddam, Kansas, in 1868.



R. B. PIERCE
Born in Iowa in 1867. Settled in Kansas in 1872.



W. H. KOZEL
Lumberman, Morrowville. Born in Wisconsin in 1865.



CHARLES KOZEL
Lumberman, Morrowville. Born in Wisconsin in 1867.



MARY A. MALUY
Born in Illinois in 1868. Settled in Washington County in 1879. Died August 1, 1897.



P. H. MALUY
Born in Illinois in 1861. Settled in Washington County in 1869.



E. A. D. MUELLER
Born in Washington County in 1870.



MRS. W. D. MEYER
Born in Washington County, Kansas, in 1877.



W. D. MEYER
Born in Indiana in 1871. Settled in Washington County in 1894.



JAMES E. STAHL
Was born in Pennsylvania in 1863. Came west in 1899.



J. T. PIEPER
Charleston. Born in Germany in 1850. Settled in Washington County in 1883.



MRS. J. T. PIEPER
Charleston. Born in Germany in 1847. Settled in Washington County in 1885.



MAGGIE L. GOBEL and Deceased HUSBAND.
Washington Township.





J. P. REESER and WIFE
Born in Illinois in 1856 and 1858.



PETER GRAY and WIFE
Section 26, Sherman.
Born in Ireland and Canada in 1844 and 1857. Settled in Washington County in 1863 and 1874.



HERMAN LINDHORST and WIFE
Sheridan.
Born in Pennsylvania and Ohio in 1817 and 1862. Settled in Washington County in 1884.



N. H. NEWCOMB and WIFE
Born in Maine in 1842 and 1845. Settled in Washington County in 1860.



HENRY HERRS and WIFE
Born in Germany in 1842 and 1844. Settled in Washington County in 1879.



E. O. ANDERSON and WIFE
Born in Sweden and Kansas in 1856 and 1878. Settled in Washington County in 1872.



A. S. RICKERT and WIFE
Mill Creek.
Born in Pennsylvania and Ohio in 1847 and 1862. Settled in Washington County in 1884.



WALTER WILLIAMS and WIFE
He was born in England in 1858. She was born in Washington County in 1860.



J. H. CUMMINGS and WIFE
Mill Creek.
Born in Washington County in 1867 and 1874, respectively.



L. H. SCHWERDTFEGER and WIFE
Born in Illinois and Missouri in 1875 and 1877. Settled in Washington County in 1881 and 1886.



WILLIAM LOGES and WIFE
Born in Germany and Illinois in 1854 and 1859. Came to Washington county in 1882.



AUGUST L. HACKBARTH and WIFE
Born in Germany and Illinois in 1845 and 1855. Settled in Washington County in 1891.



Farm Residence of
MR. J. H. DOHERTY



Fermington.
JACOB BANNINGER and WIFE
Born in Germany and Wisconsin in 1854 and 1862. Settled in Washington County in 1879 and 1880, respectively.



J. H. HOFFMAN and WIFE
Born in Pennsylvania and Missouri in 1864 and 1876. Settled in Washington County in 1871 and 1887.



Residence of
J. H. D. LUEHRING
Section 24, Charleston.



J. H. SCHUTTE and WIFE
Born in Germany in 1840 and 1843. Came to America in 1868 and 1867, and Washington County in 1870.



CHRIST PETERS and WIFE
Born in Germany in 1832 and 1858. Settled in Washington County in 1884 and 1881. He died in 1890.



H. C. LEHMAN and WIFE
He was born in Indiana in 1861. Settled in Washington County in 1887.



CHARLES HENNEBORG and WIFE
He was born in Will County, Illinois. Settled in Washington County in 1899.



C. LINDHORST
Strawberry.
Born in Hanover, Germany, in 1843. Settled in Washington County in 1880.



W. L. BASTOW and WIFE
Mill Creek.
Born in Washington County in 1869 and 1874, respectively.



AUGUST MUNSTERAMN and WIFE
Born in Germany in 1856 and 1855. Settled in Washington County in 1869.



WILLIAM O'BRIEN and WIFE
Born in Illinois and Washington County, Kansas, in 1872 and 1880. He settled in Washington County in 1879.



OTTO H. MEYER and WIFE
Born in Washington County in 1875 and 1878.



JOHN W. KNIGHT and WIFE
Born in Indiana in 1848 and 1855. Settled in Washington County in 1895.



A. STRICKLER and WIFE
Born in Iowa in 1863 and 1866. Settled in Washington County in 1902.



GEORGE SCRUBY and WIFE
Born in Wisconsin and Iowa in 1859 and 1855. Settled in Washington County in 1870 and 1869.



THEODORE RATEUKE and WIFE
Born in Germany and Washington County in 1870 and 1882. He came to Washington County in 1885.



HENRY NEUMANN and WIFE
He was born in Germany in 1875. Settled in Washington County in 1891. She was born in Hanover, Kansas in 1882.



A. A. DINGMAN and WIFE
Born in Illinois and Iowa in 1857 and 1862. Settled in Washington County in 1876 and 1880.



F. W. MEYER and WIFE
Born in Indiana and Washington County, Kansas, in 1867 and 1875. He settled in Washington County in 1892.



J. G. WESTING and WIFE
Born in Germany in 1845 and 1841. Settled in Washington County in 1881.



HENRY LUHRING, JR. and WIFE
Born in Washington County, Kansas, and Germany, in 1875 and 1869. She settled in Washington County in 1885.



WILLIAM MEYER and WIFE
Born in Germany and Washington County, Kansas, in 1855 and 1879, respectively. He settled in Washington County in 1872.



HENRY KLUSMAN and WIFE
Born in Germany in 1850 and 1847. Settled in Washington County in 1873. He died Jan. 15, 1904.



HANS MOLT and WIFE
Born in Germany in 1830 and 1848. Settled in Washington County in 1897.



JOHN LINDSEY and WIFE
Born in Wisconsin and Iowa in 1855 and 1866. Settled in Washington County in 1870 and 1880.



C. S. KERNS and WIFE
Born in Kentucky in 1847 and 1849. Settled in Washington County in 1874.



Residence of
JOHN INECK
Section 28, Little Blue.



Farm Residence of
J. F. WILKENS
Strawberry Township.



Residence of
M. PERSON
Brantford Township.



Residence of
MRS. EMELIA LUEHRING
Section 4, Little Blue T. W. P.



Farm Residence of
U. G. PANBACKER
Sec. 26, Franklin T. W. P.



Farm Residence of
J. H. WEHLING
Sec. 18, Independence T. W. P.



Farm Residence of
JACOB NEU
Logan Township.



CITY HOTEL
Hollenberg, Kan.



Farm Residence of
LEANDER FRAGER
Section 16, Linn T. W. P.
Homesteader of 1890.



Residence of
G. F. DHORITY
He was born in Iowa in 1891. Settled
in Washington County in 1882.



Farm Residence of
JOHN J. PETERSEN
Section 18, Linn T. W. P.



Residence of
F. W. OLSON
Section 8, Coleman.



Farm Residence of
C. L. STANTON
Section 18, Farmington.



Residence of
CONRAD WISE
Section 25, Little Blue.



Farm residence of
GEORGE BESWICK
Section 32, Sherman T. W. P.



Farm Residence of
CARL OESTREICH
Linn Township.



Farm Residence of
W. A. TILTON
Section 6, Independence T. W. P.



Farm Residence of
HERMAN MEERIAN
Section 11, Hanover Township.



Farm Residence of
JAMES R. GOND
Section 8, Charleston.



Residence of
E. H. POTTER
Barnes Township.



Farm Residence and Barn of
A. B. THOMPSON
Section 31, Logan Township.



Farm Residence and Barn of
A. W. BOND
Charleston Precinct.



HENRY C. SCHWERDTFEGER
Born in Illinois in 1863. Settled in
Kansas in 1880.



LIZZIE SCHWERDTFEGER
Born in Iowa in 1868. Settled in
Kansas in 1870.



**GERMAN EVANGELICAL LUTHER-
AN ST. JOHN'S CHURCH**
Section 16, Sherman Township. Erect-
ed in 1896.



ANNA P. RYSER
Born in Germany in 1843. Settled in
Washington County in 1882.



V. R. WYMORE
Born in Nebraska in 1867.



MARY WYMORE
Born in Iowa in 1872. Settled in
Washington County in 1892.



HERMAN KAISER and WIFE
Born in Germany in 1856 and 1868.
Settled in Washington County
in 1884 and 1882, respec-
tively.



GEORGE B. WURTZ and WIFE
Born in Washington County, Kansas,
in 1878 and 1877, respectively.



JACOB EIPPER
Born in Illinois in 1862. Settled in
Washington County in 1889.



JAMES CREIGHTON
Born in Scotland in 1831. Settled in
Washington County in 1882.



Residence of
W. J. KLOTZ
Franklin Township.



N. G. ESSLINGER and WIFE
Born in Freeport, Illinois, in 1857 and
1860. Settled in Washington
County in 1859 and 1880.



R. B. BRIGGS and WIFE
Born in New York State in 1846 and
1848. Settled in Washington
County in 1869.



RICHARD R. JONES and WIFE
Born in South Wales in 1862 and 1864.
Settled in Washington County in
1892.



C. L. RODICK AND WIFE
Born in Germany in 1865 and 1869
respectively.