



ILLUSTRATIONS



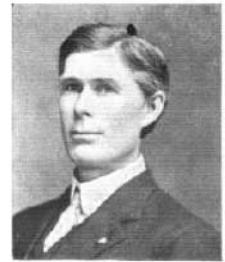
F. J. COOPER, SR.,
CHANUTE, KANSAS.



MRS. F. J. COOPER, SR.,
CHANUTE, KANSAS.



M. T. SPANG,
Register of Deeds and Bonded
Abstractor,
FREDONIA, KANSAS.



R. W. McGRATH,
Lawyer and Investment Broker,
FREDONIA, KANSAS.



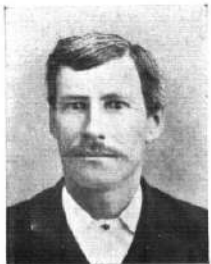
RESIDENCE OF C. A. STAFFORD.



MAIN STREET,
ALTOONA, KANSAS.



HIGH SCHOOL,
ALTOONA, KANSAS.



ROBERT MITCHELL,
BENEDICT, KANSAS.



FRITZ KOCH,
FREDONIA, KANSAS.



MR. AND MRS. A. G. KRISHER,
ALTOONA, KANSAS.



MR. AND MRS. JOHN N. LAMB,
FREDONIA, KANSAS.

ILLUSTRATIONS



MR. AND MRS. CALVIN DANNELS,
ALTOONA, KANSAS.



MR. AND MRS. G. R. PRUNTY,
BENEDICT, KANSAS.



PETER TRIMMELL,
MORICHEAD, KANSAS.



S. SWANSON AND FAMILY,
CHASUTE, KANSAS.



RESIDENCE, AUTOMOBILE SHOP AND GARAGE,
OF U. L. BROWN,
MORICHEAD, KANSAS.



T. S. DANNELS AND GROUP PHOTO FROM CALVIN DANNELS.



A VIEW ON TOP OF A RAILWAY
EMBANKMENT,
Built in 1875, 18 to 20 feet high, showing trees
covering same. This embankment is soon to be
used by the Kansas Railway Co. for an electric
line.



COCKERILL ZINC SMELTER,
ALTOONA, KANSAS.



RESIDENCE OF W. J. WOOTHEN.



RESIDENCE AND BARN OF
E. J. COOPER, SR.



ALTOONA, PORTLAND CEMENT CO.,
ALTOONA, KANSAS.



TREES ONE FOOT IN
DIAMETER,
Growing on top of a pier in the Ver-
digris river, built in 1873, and soon
to be utilized by the Kansas Railway
Co. for a trolley line bridge at Altoona.