

TUTTLE & PIKE'S
ATLAS OF
KANSAS CITY
KANSAS

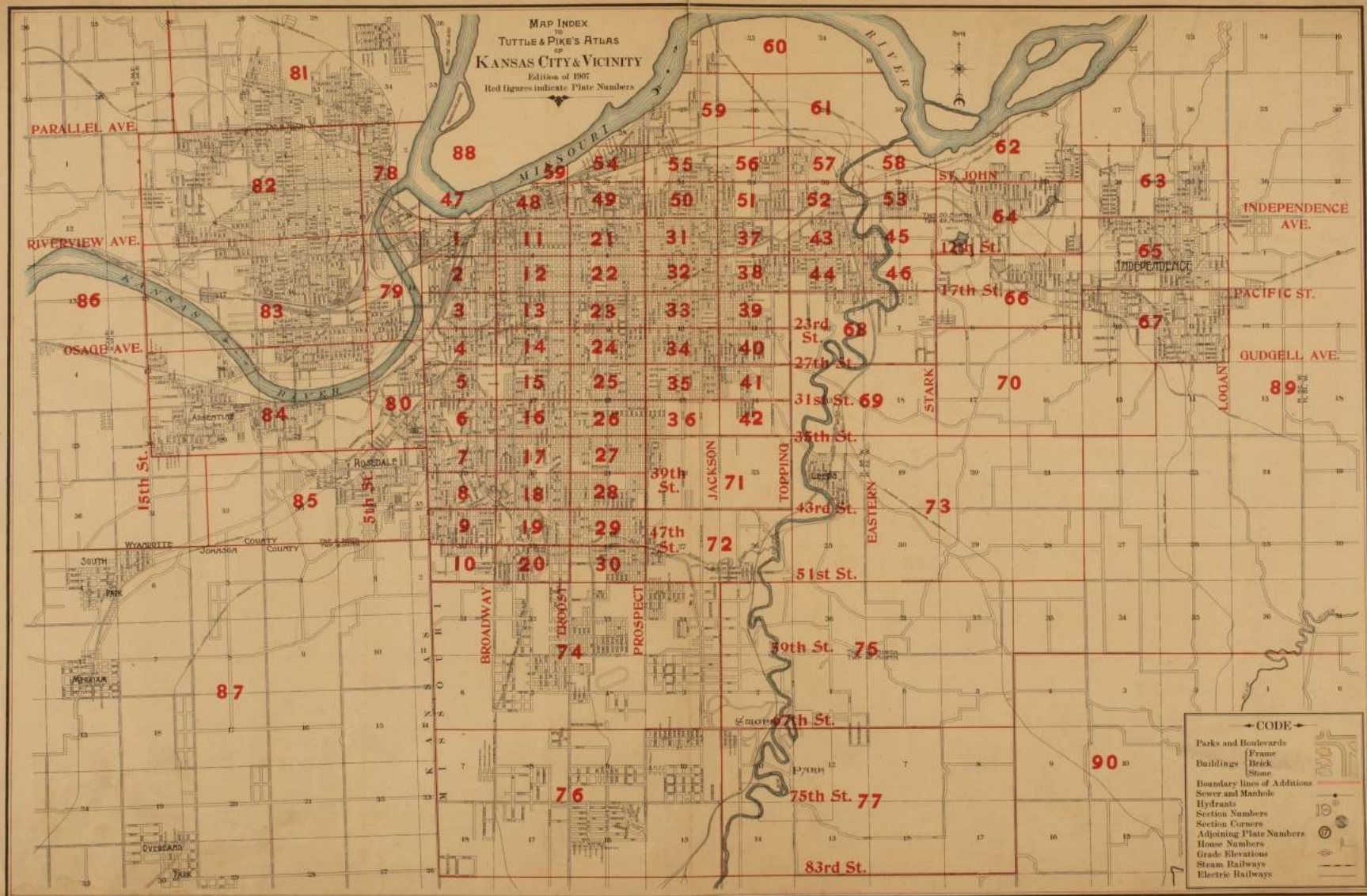
EDITION OF 1907

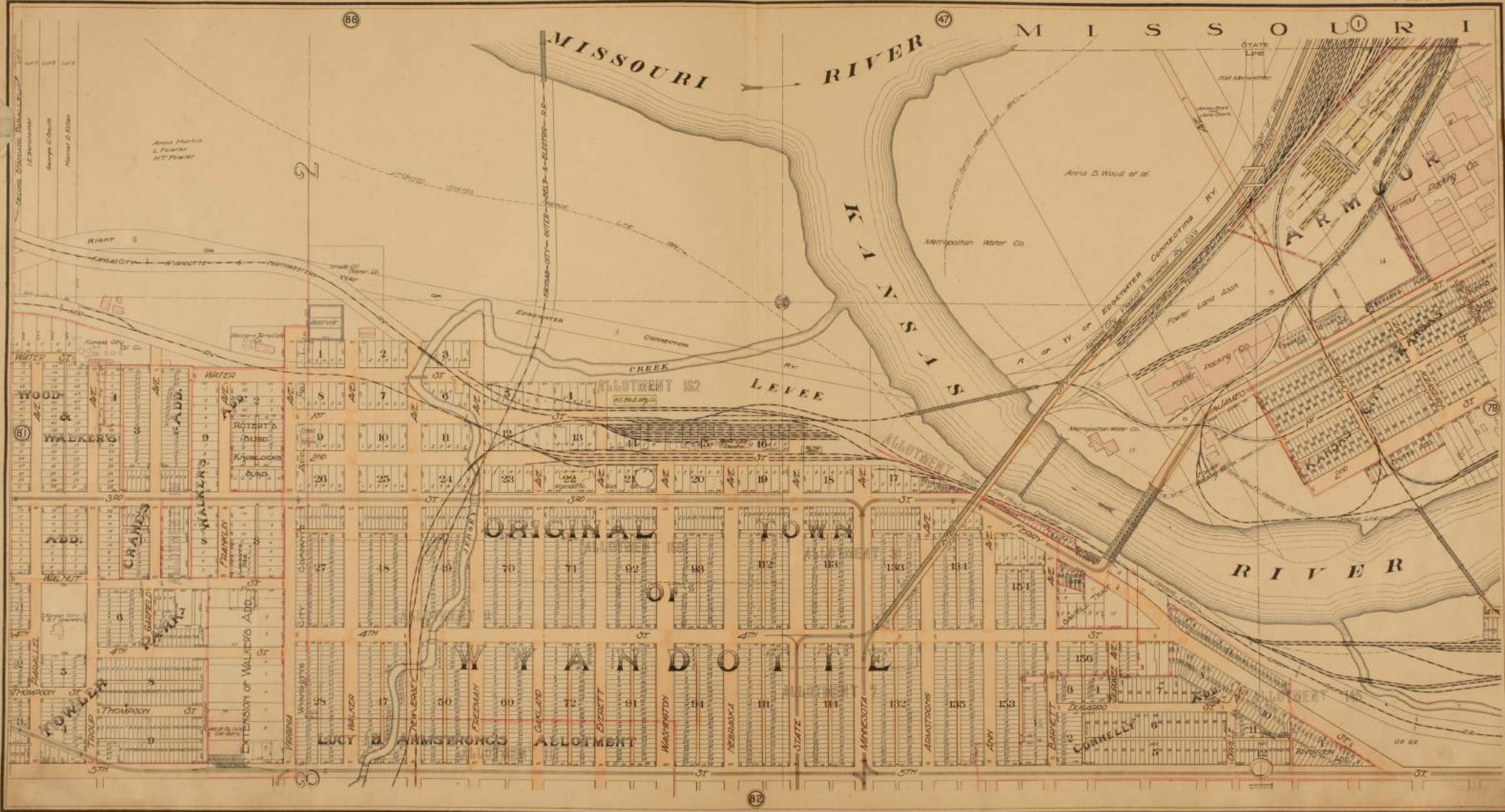
PUBLISHED BY
TUTTLE & PIKE
CIVIL ENGINEERS,
SHUBERT THEATRE BUILDING,
KANSAS CITY, MO.

DRAWINGS—TUTTLE & PIKE. CHARLES E. MCCRAE, CHIEF DRAFTSMAN, Kansas City
LAND OWNERSHIPS—UNION ABSTRACT CO., and NORMAN & ROBERTSON, Kansas City
PHOTO-LITHOGRAPHY - - - - - LEGGO BROS. & CO., New York
LITHOGRAPHIC PRESSWORK - - - - - CHARLES HART, New York
COLORS - - - - - JOHN C. EBERLE, New York
PAPER - - - - - KANSAS CITY PAPER HOUSE, Kansas City
TYPOGRAPHY AND BINDING—F. P. BURNAP STATIONERY & PRINTING CO., Kansas City

ENTERED ACCORDING TO THE ACT OF CONGRESS IN THE YEAR 1905, BY TUTTLE & PIKE, IN THE OFFICE OF THE LIBRARIAN OF CONGRESS, AT WASHINGTON, D. C.

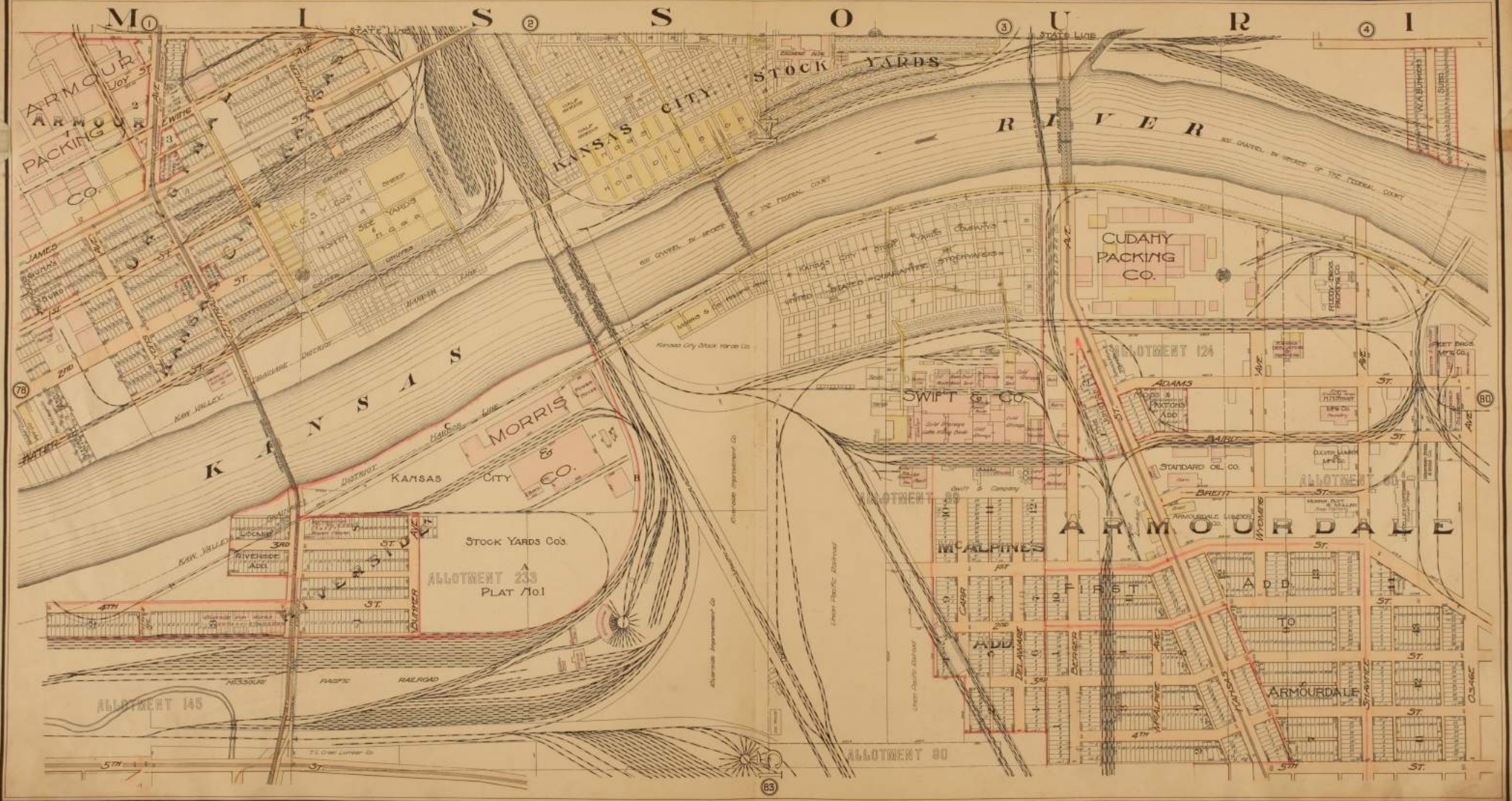
MAP INDEX
 TUTTLE & PIKE'S ATLAS
 OF
KANSAS CITY & VICINITY
 Edition of 1907
 Red figures indicate Plate Numbers





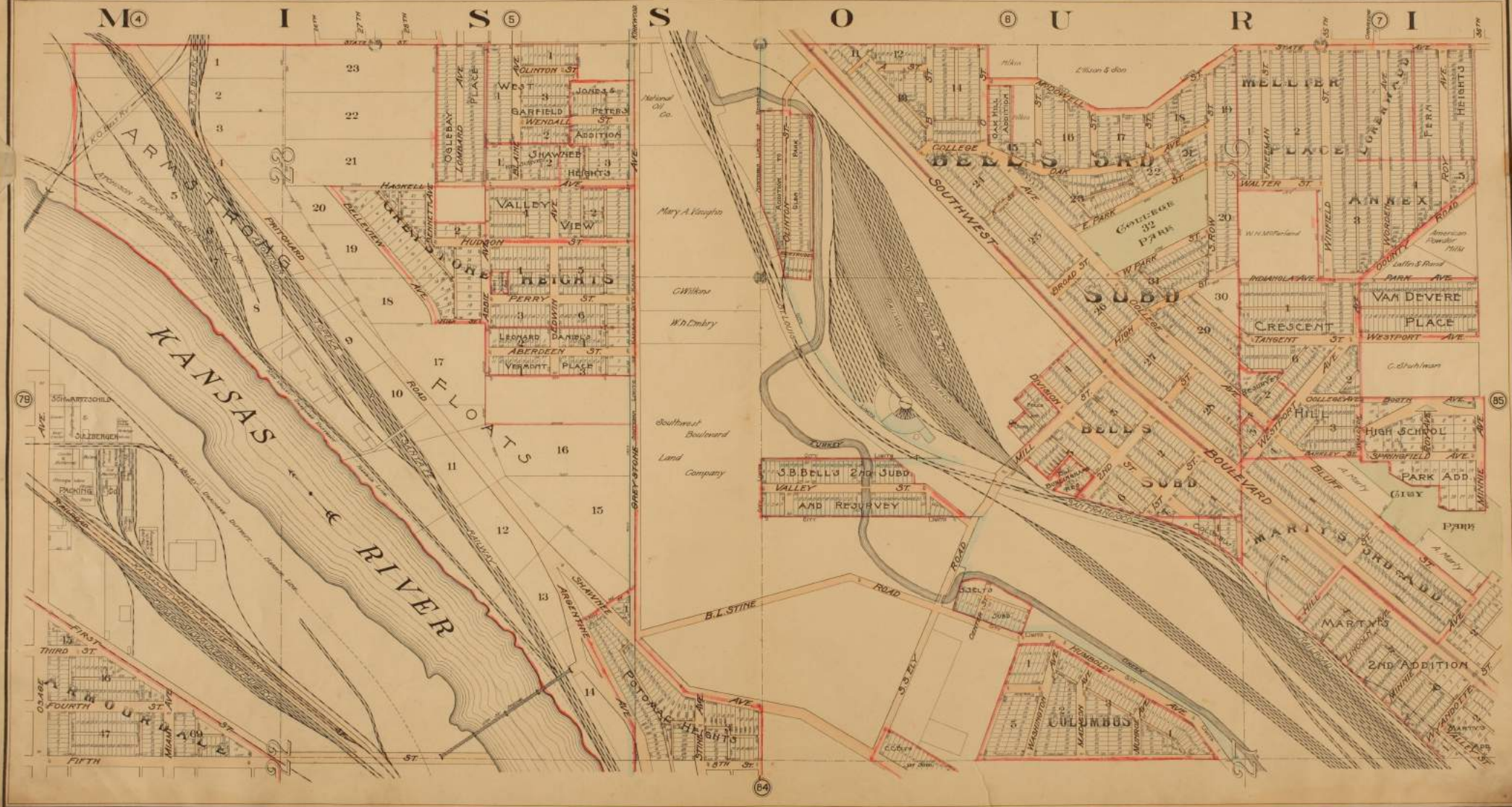
Scale 1 Inch=240 Feet

TUTTLE & PIKE



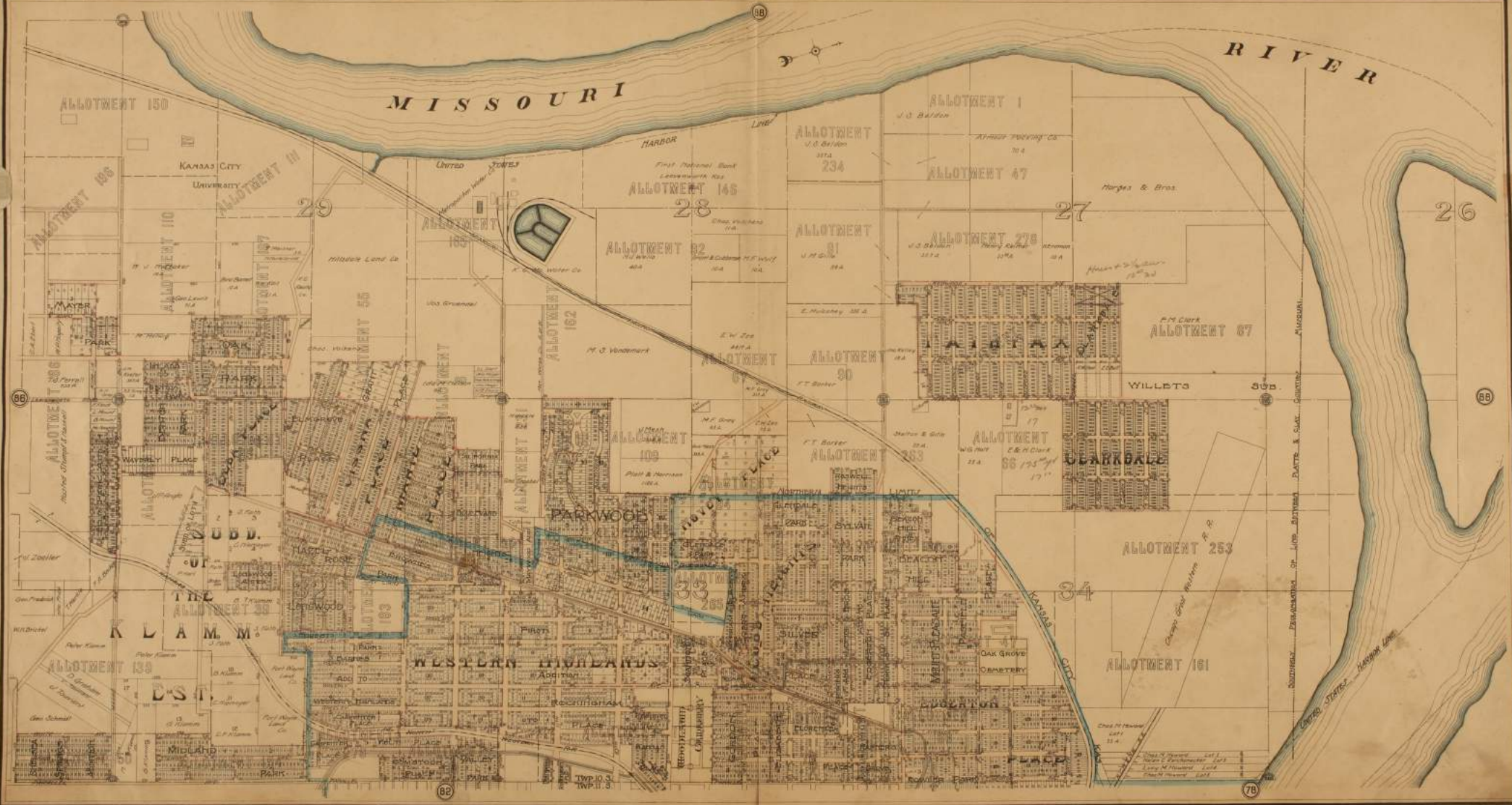
Scale 1 inch=240 Feet

TUTTLE & PIKE,



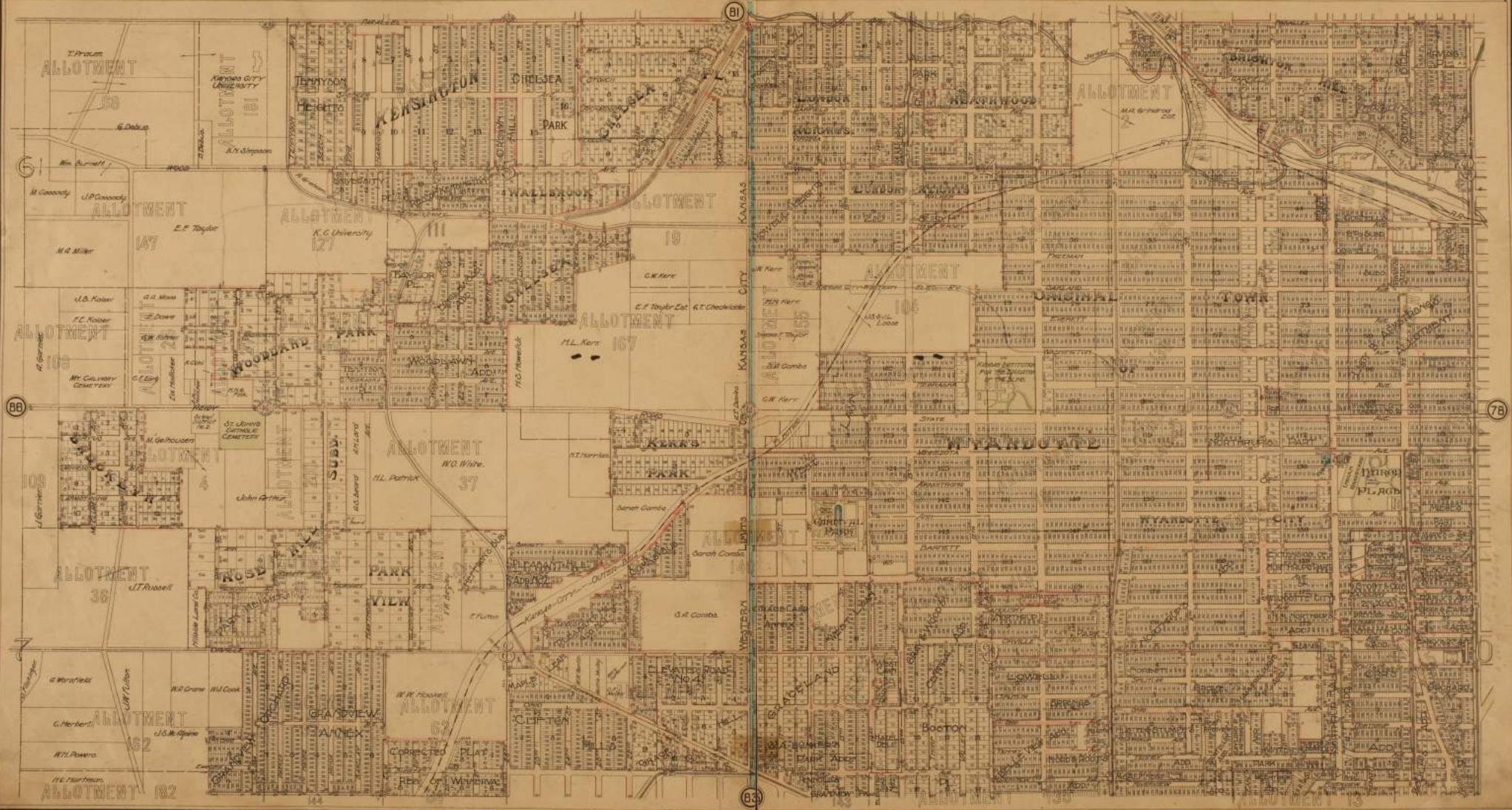
Scale 1 inch = 240 Feet

TUTTLE & PIKE



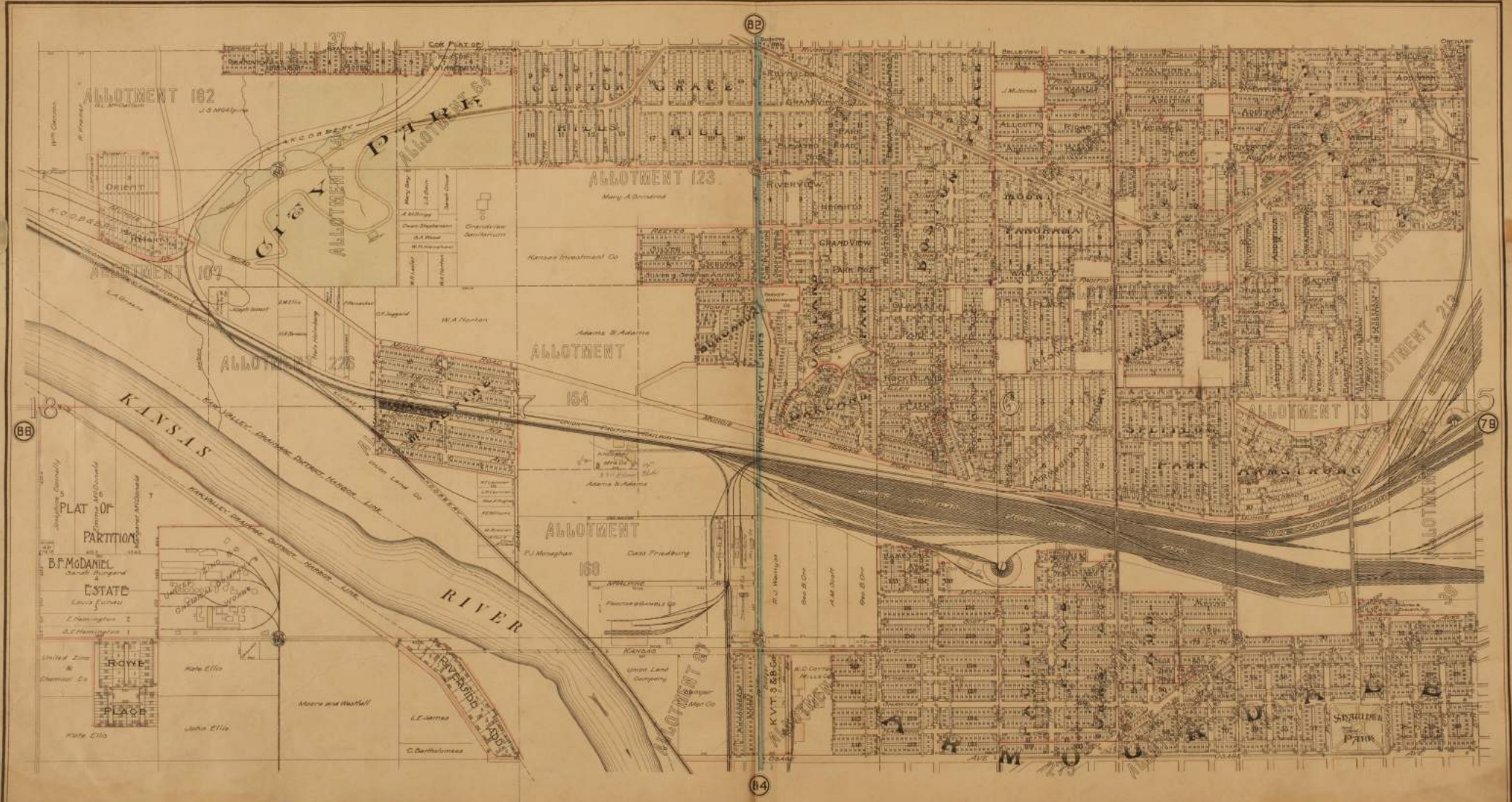
Scale 1 inch = 600 Feet

TUTTLE & PIKE.



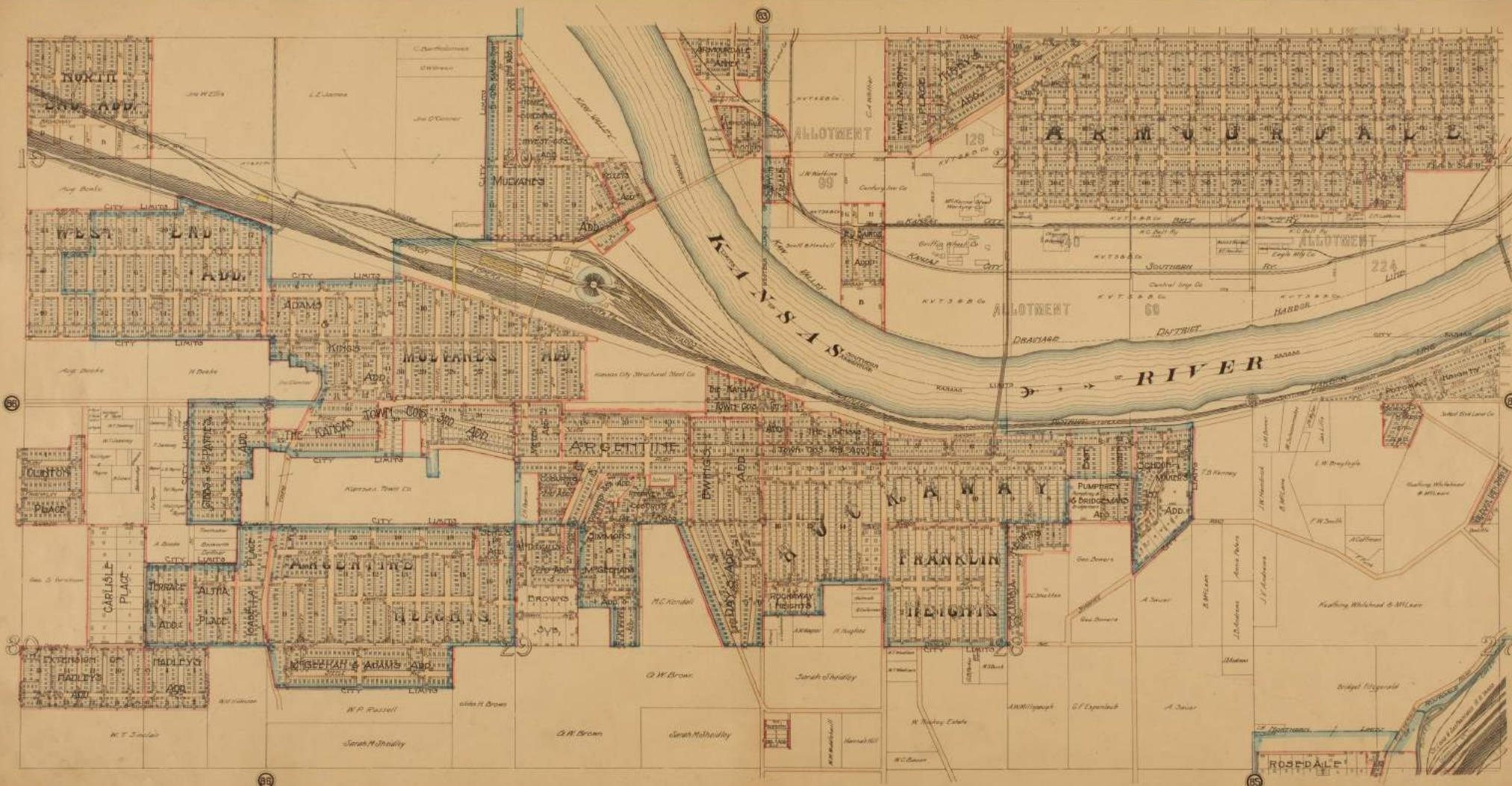
Scale: 1 Inch = 480 Feet

TUTTLE & PIKE



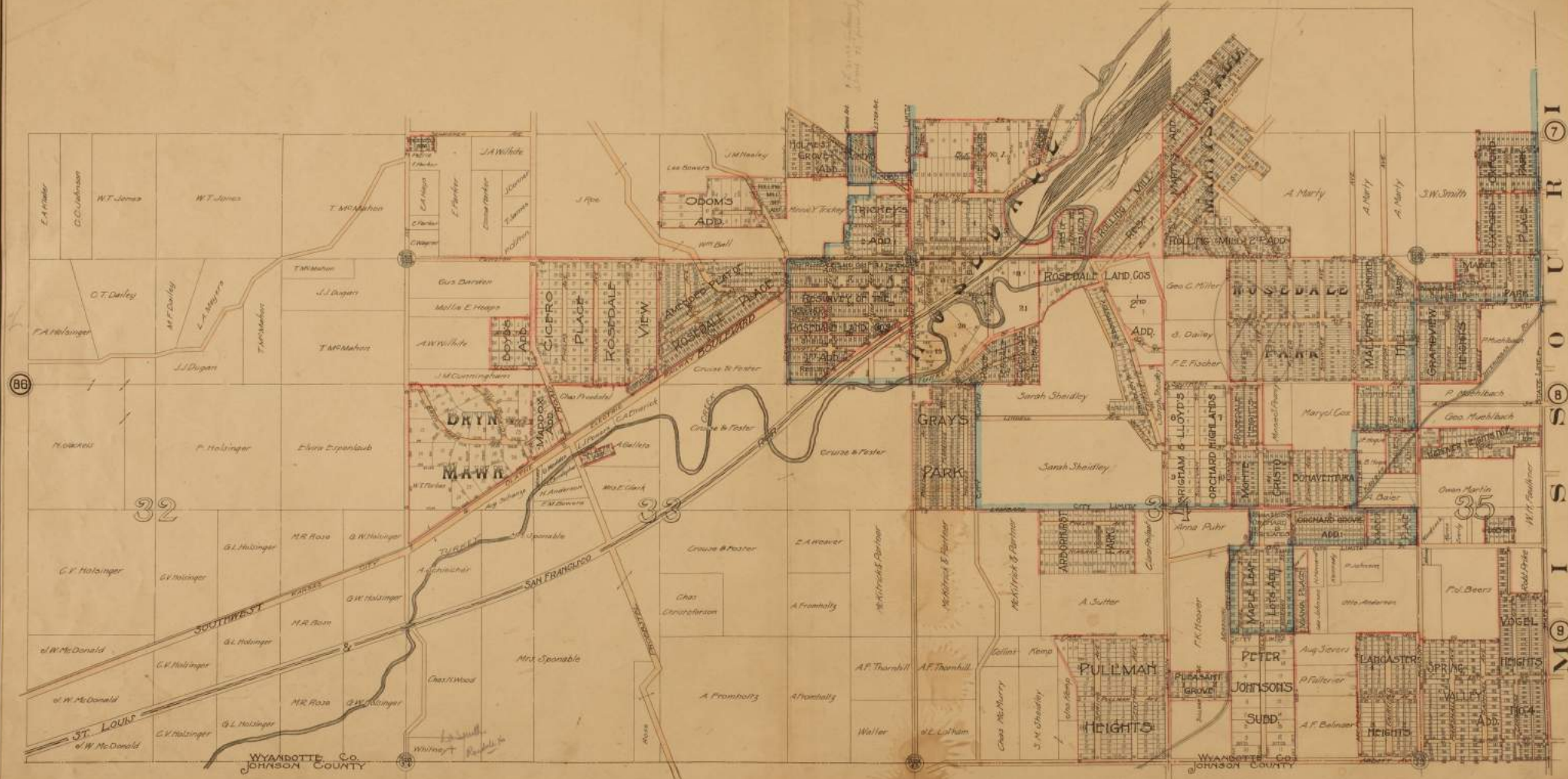
Scale: 1 Inch = 480 Feet

TUTTLE & PIKE



84

80



86

32

33

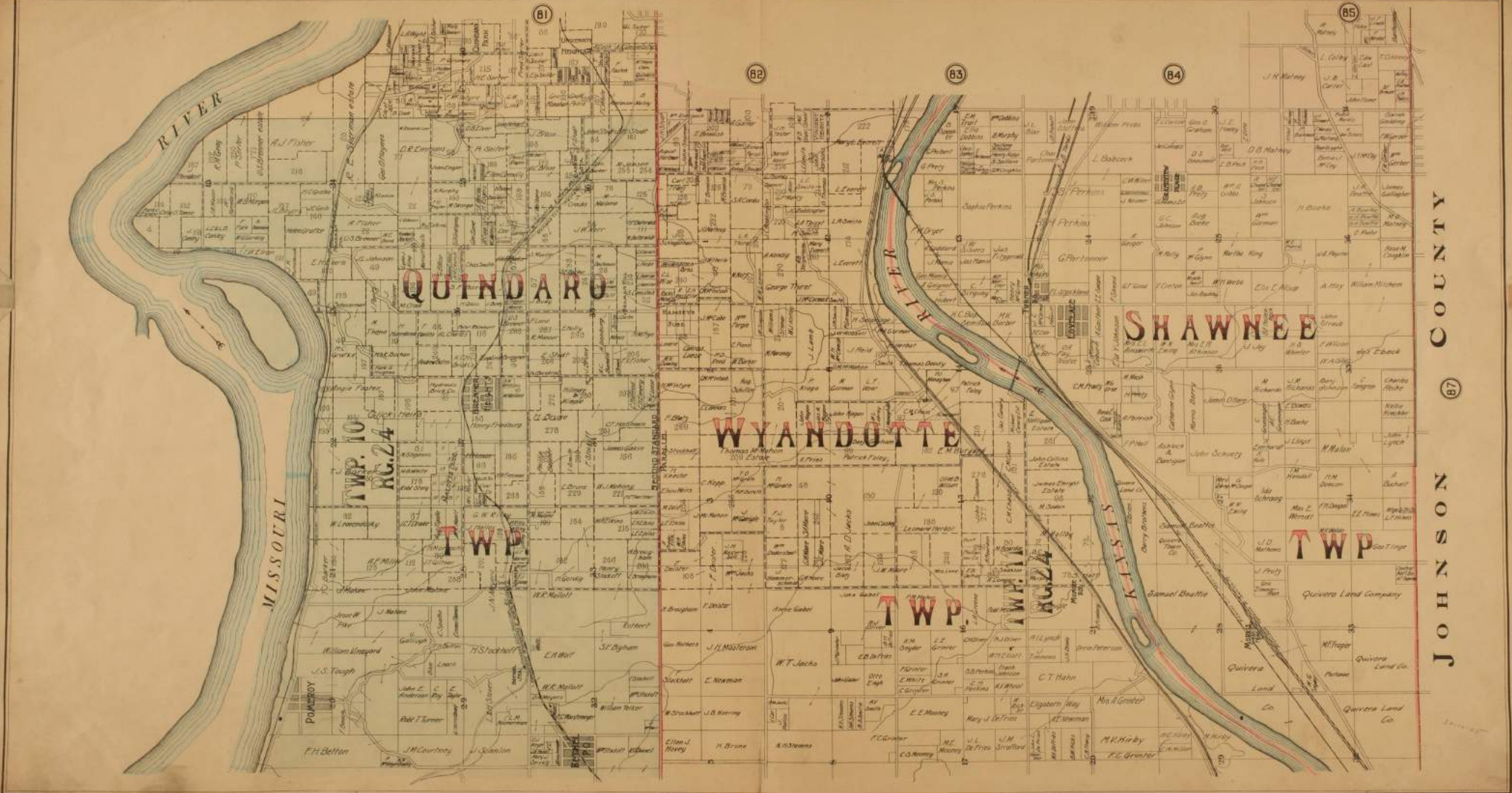
35

87

Scale: 1 Inch = 480 Feet

TUTTLE & PIKE.

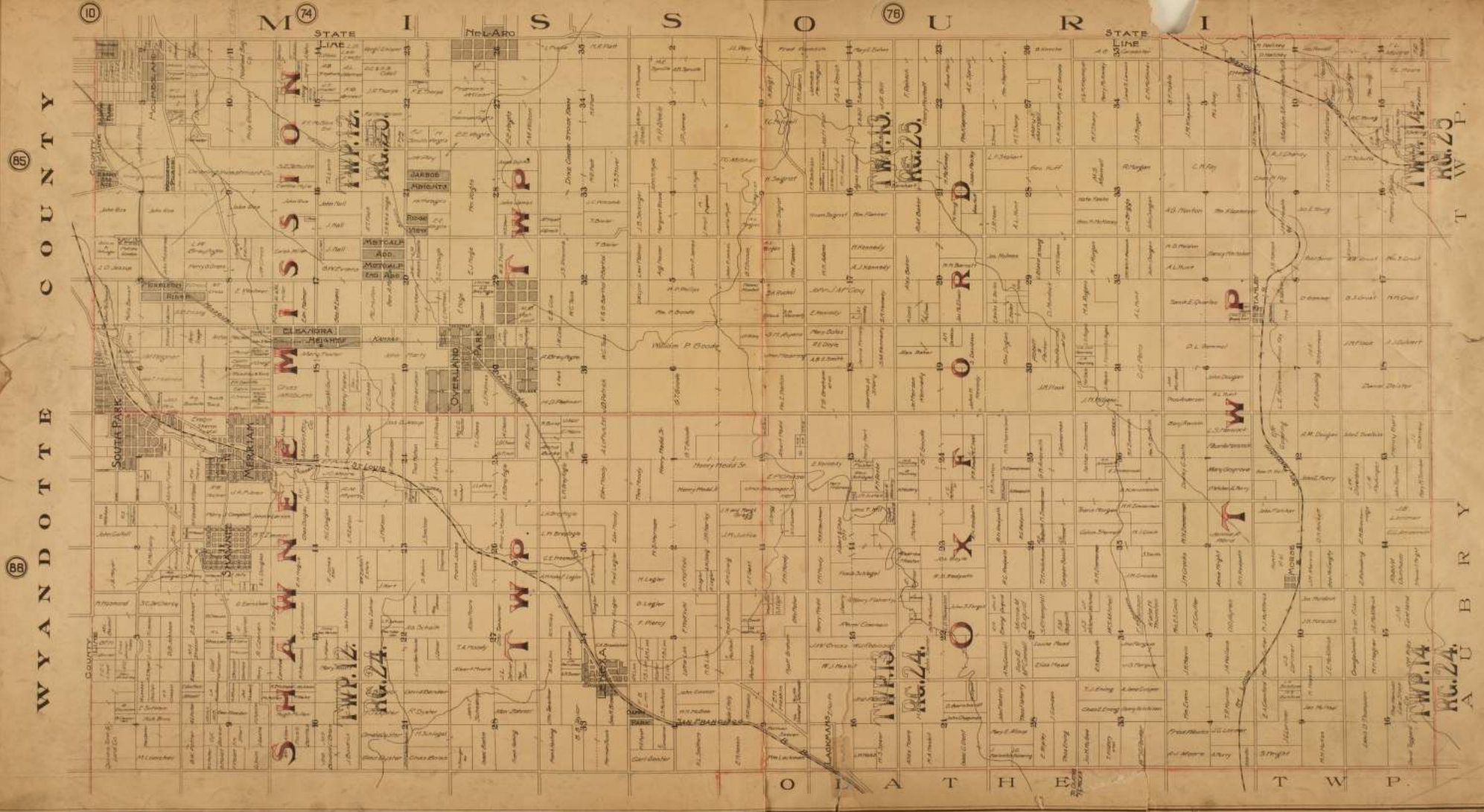
W I S S O U R I



JOHNSON COUNTY

Scale 3 Inches = 1 Mile

TUTTLE & PIKE



Scale 1 inch = 2640 Feet

TWP. 14 R. 24