

OUTLINE MAP OF CALLAWAY COUNTY

Copyright 1919 by Geo. A. Ogle & Co.

MISSOURI

Scale 3/4 of 1 inch to 1 mile

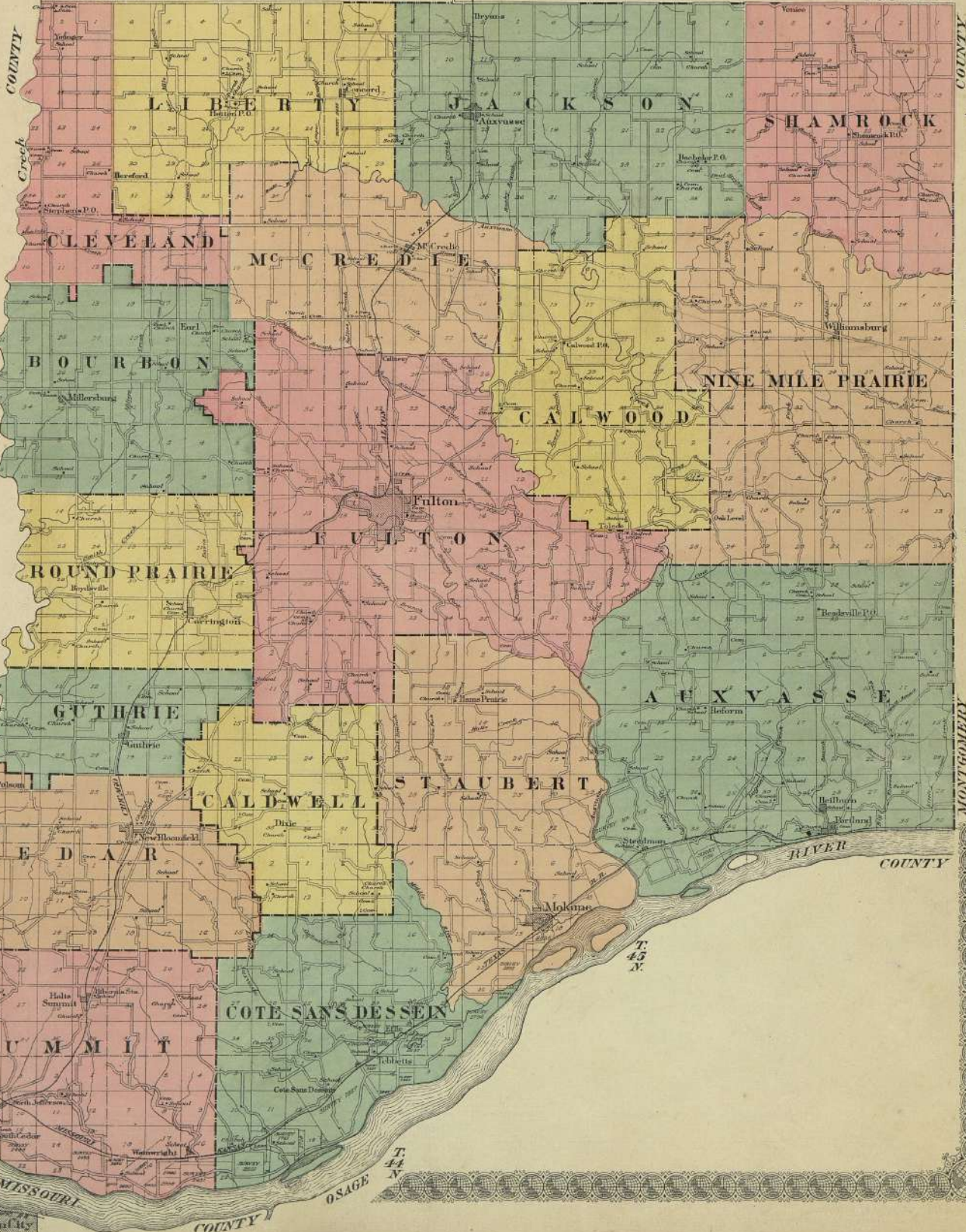
R.10W. AUDRAIN

R.10W.

R.9W.

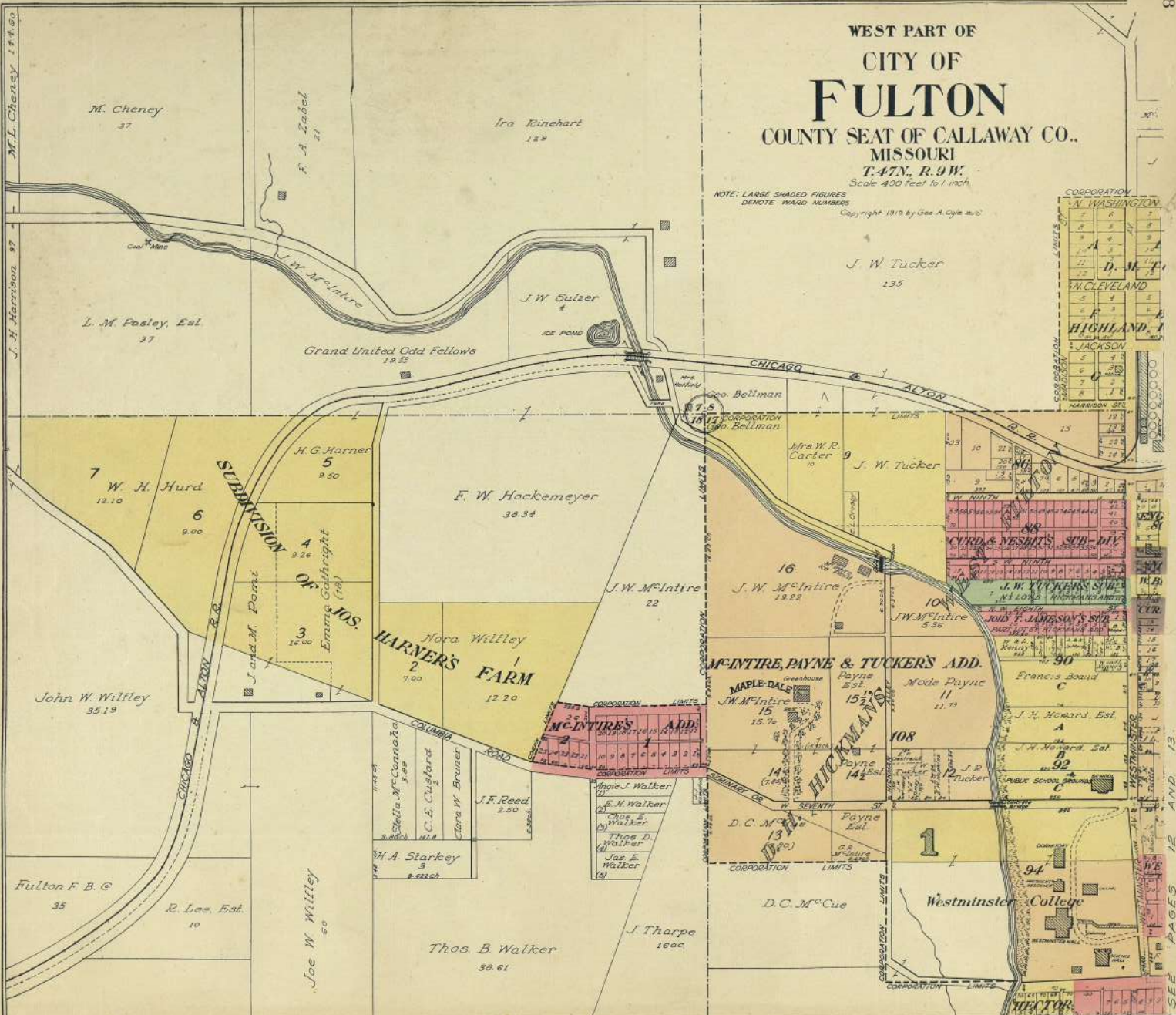
R.8W.

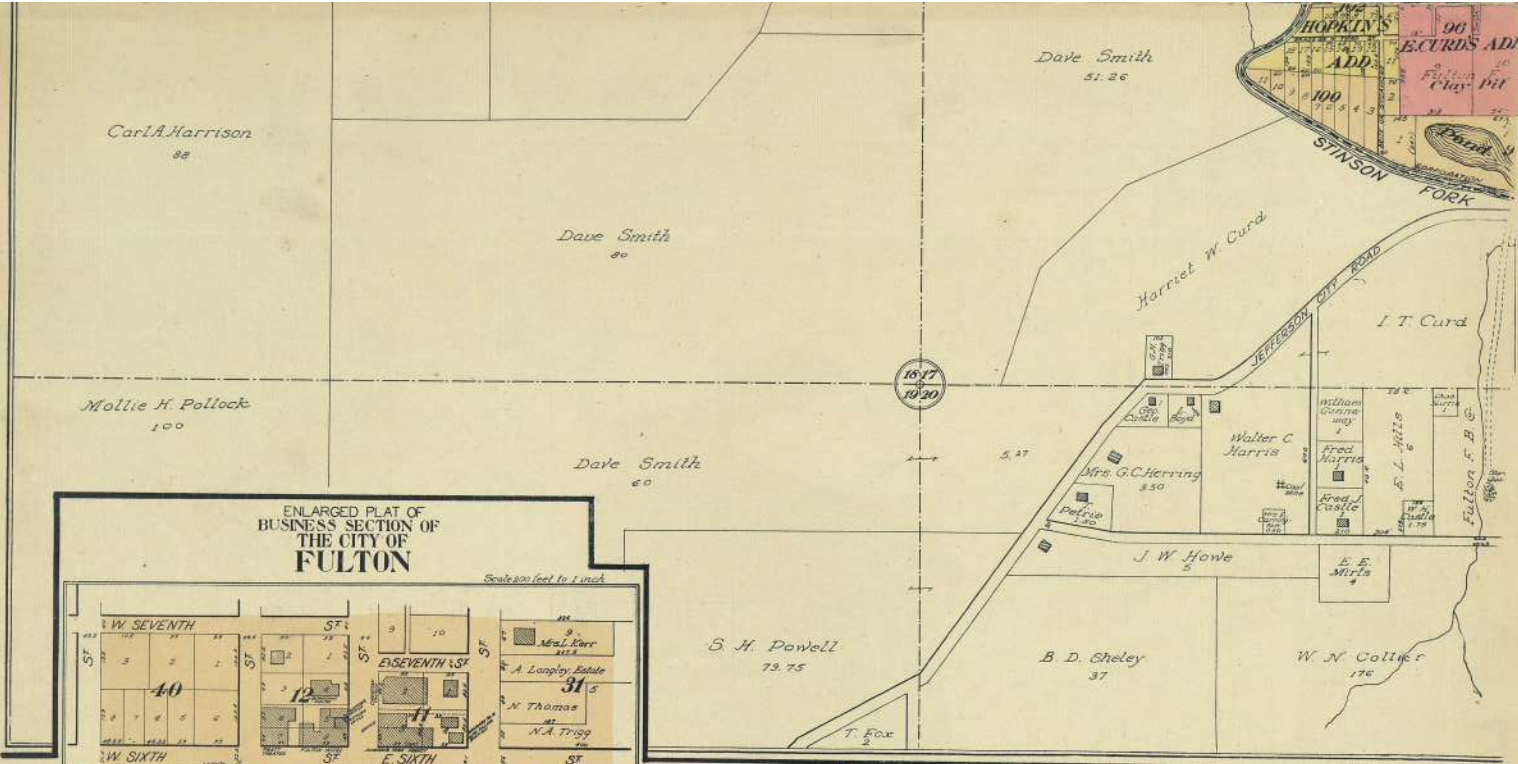
R.7W. COUNTY



WEST PART OF
 CITY OF
FULTON
 COUNTY SEAT OF CALLAWAY CO.,
 MISSOURI
 T. 47N., R. 9W.
 Scale 400 Feet to 1 inch
 Copyright 1919 by Geo. A. Cyle & Co.

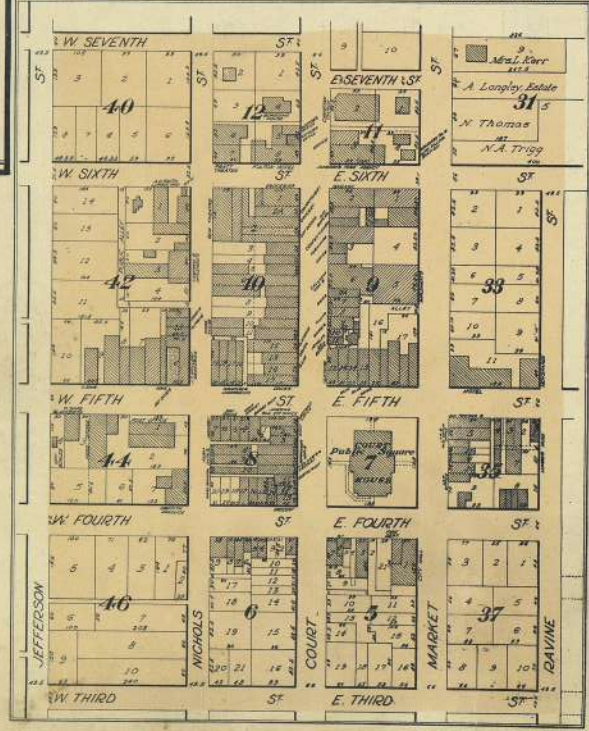
NOTE: LARGE SHADED FIGURES
 DENOTE WARD NUMBERS



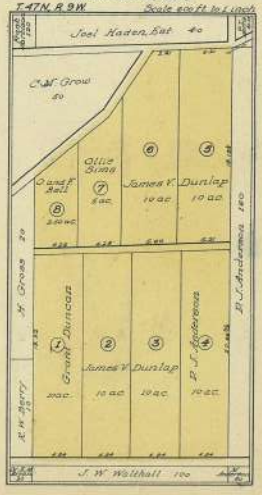


ENLARGED PLAT OF
BUSINESS SECTION OF
THE CITY OF
FULTON

Scale 500 feet to 1 inch



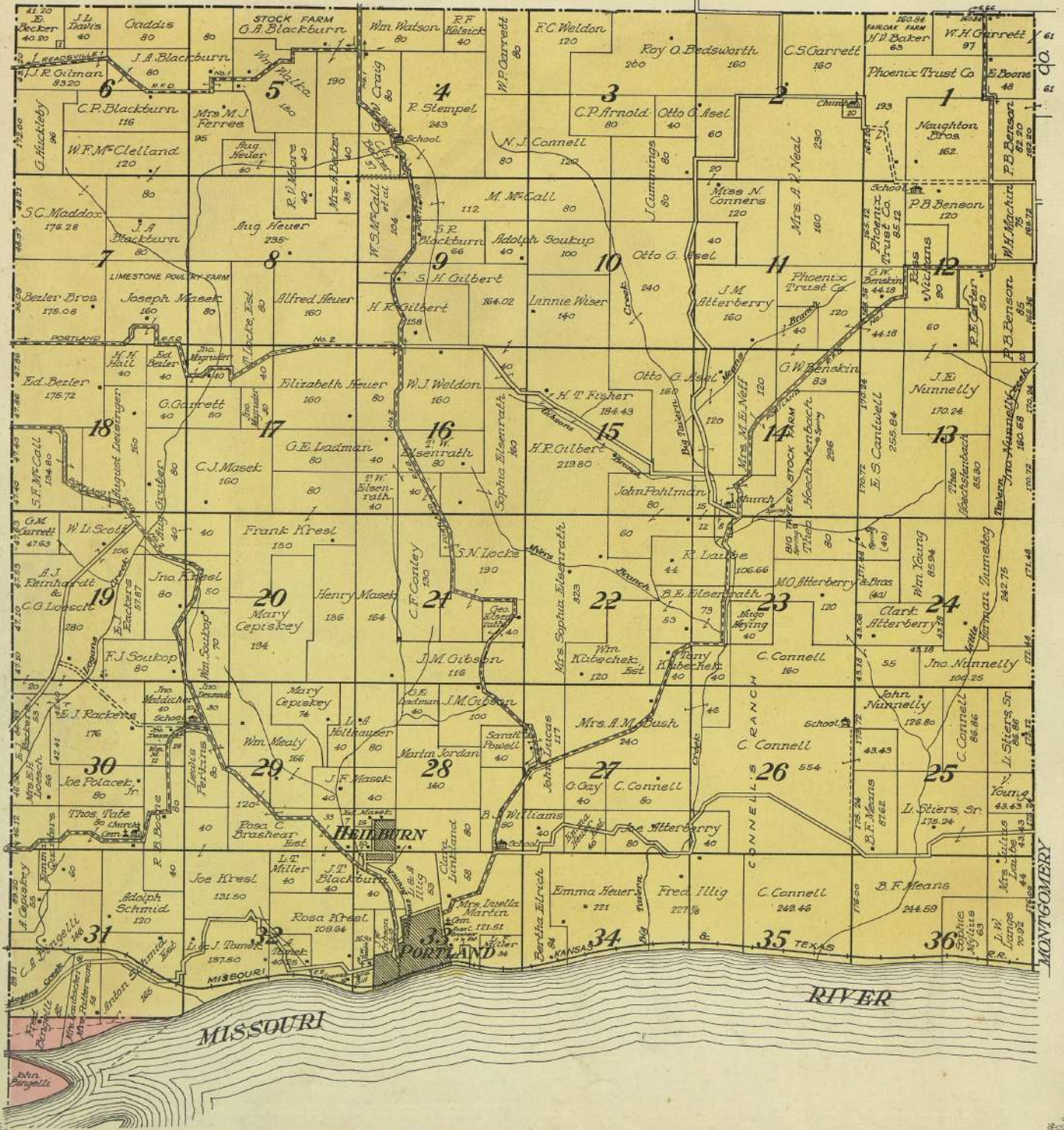
N.L. Townsends Sub.
PART OF E 1/4 OF SEC. 9



MAP OF TOWNSHIP 46 N., RANGE 7 W. and PART of TOWNSHIP 45 N., RANGE 7 W.

OF THE 5th P. M.

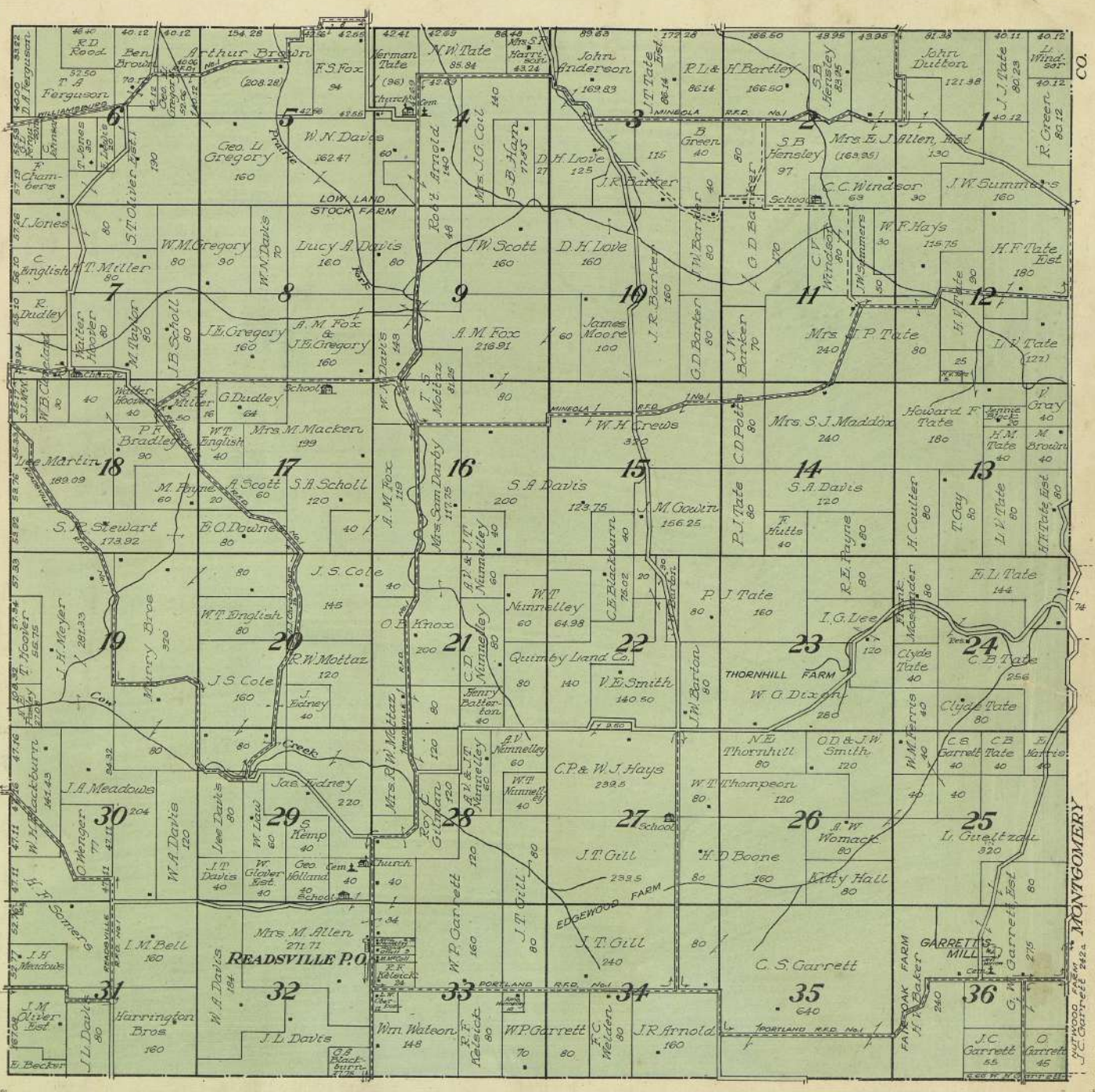
Scale 2 inches to 1 mile





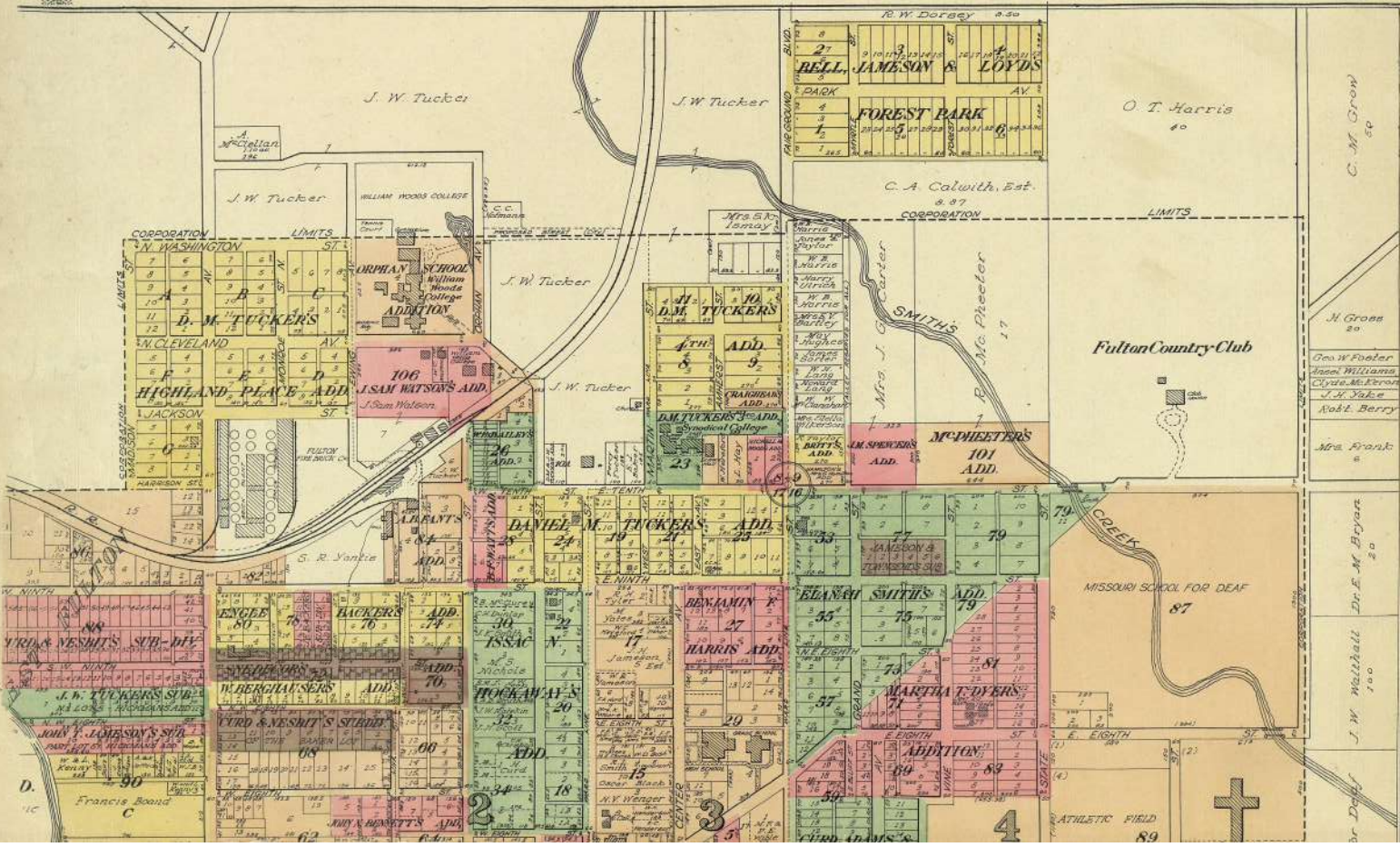
MAP OF
TOWNSHIP 47 N., RANGE 7 W.
 OF THE 5th P. M.

Scale 2 inches to 1 mile

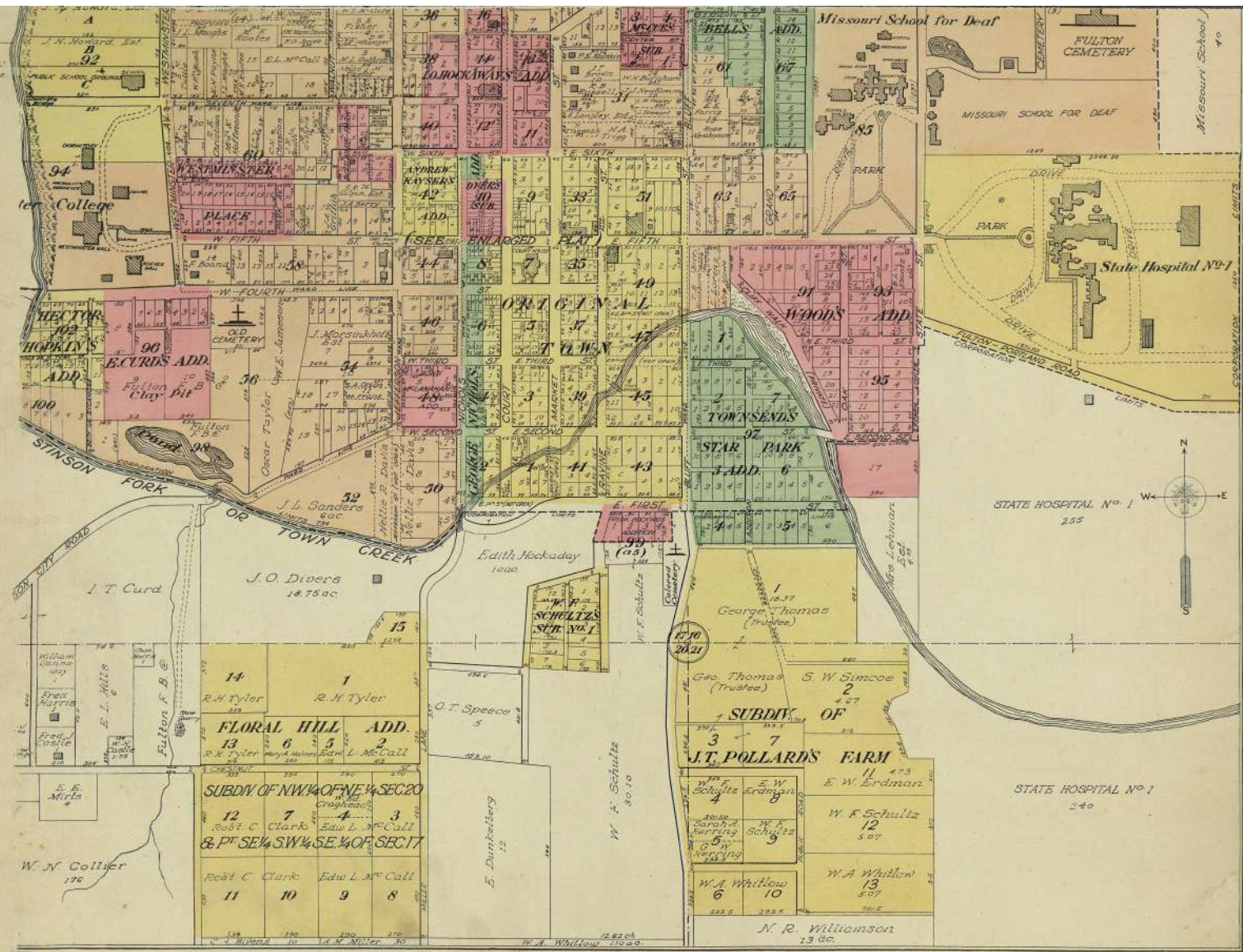


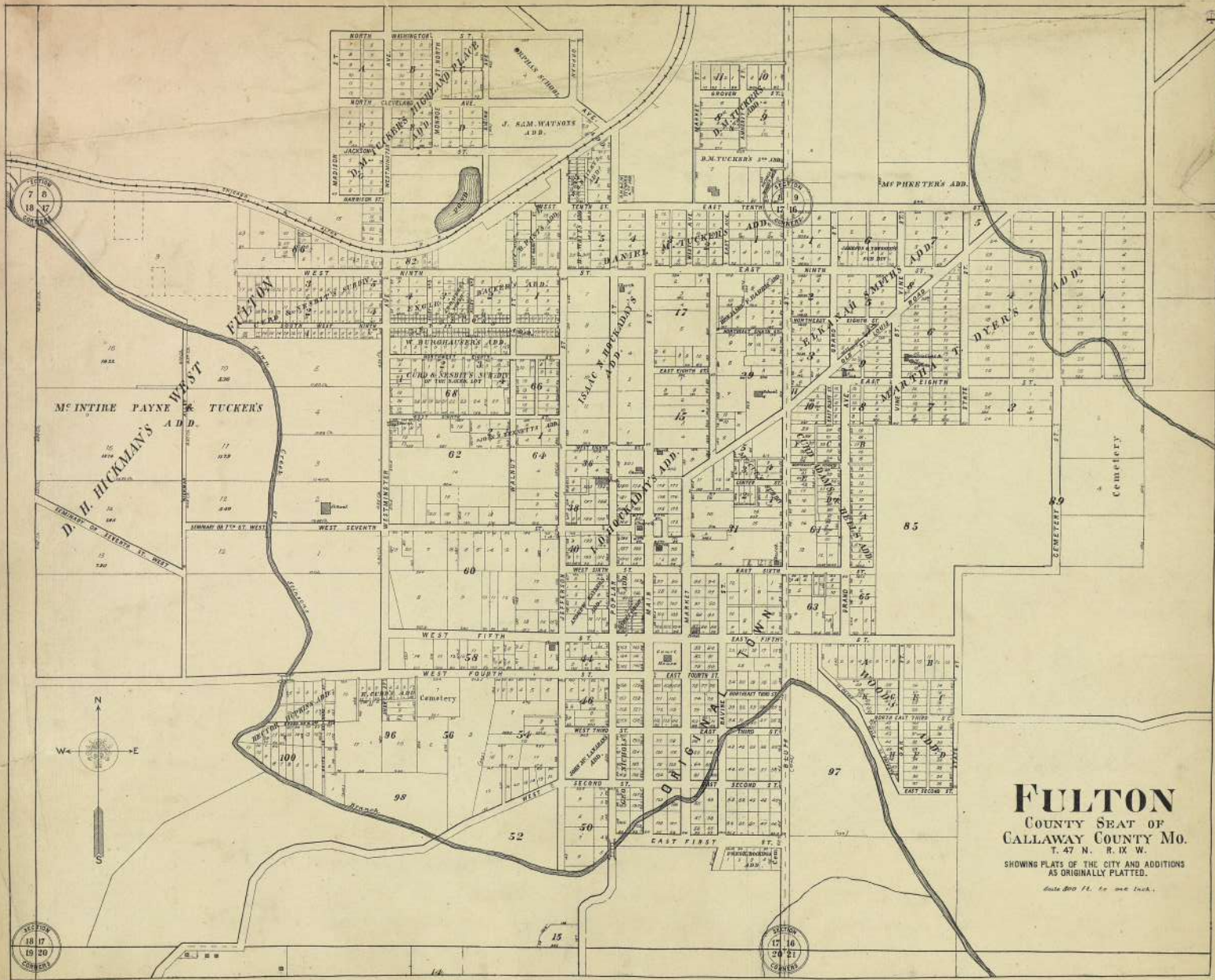
EAST PART OF
CITY OF
FULTON
COUNTY SEAT OF CALLAWAY CO.,
MISSOURI
T-47N, R.9W

NOTE: LARGE SHADED FIGURES
DENOTE WARD NUMBERS
Copyright 1919 by Geo. A. Oyle & Co.



FOR WEST PART SEE PAGES 8 AND 9.





FULTON
 COUNTY SEAT OF
 CALLAWAY COUNTY MO.
 T. 47 N. R. IX W.
 SHOWING PLATS OF THE CITY AND ADDITIONS
 AS ORIGINALLY PLATTED.

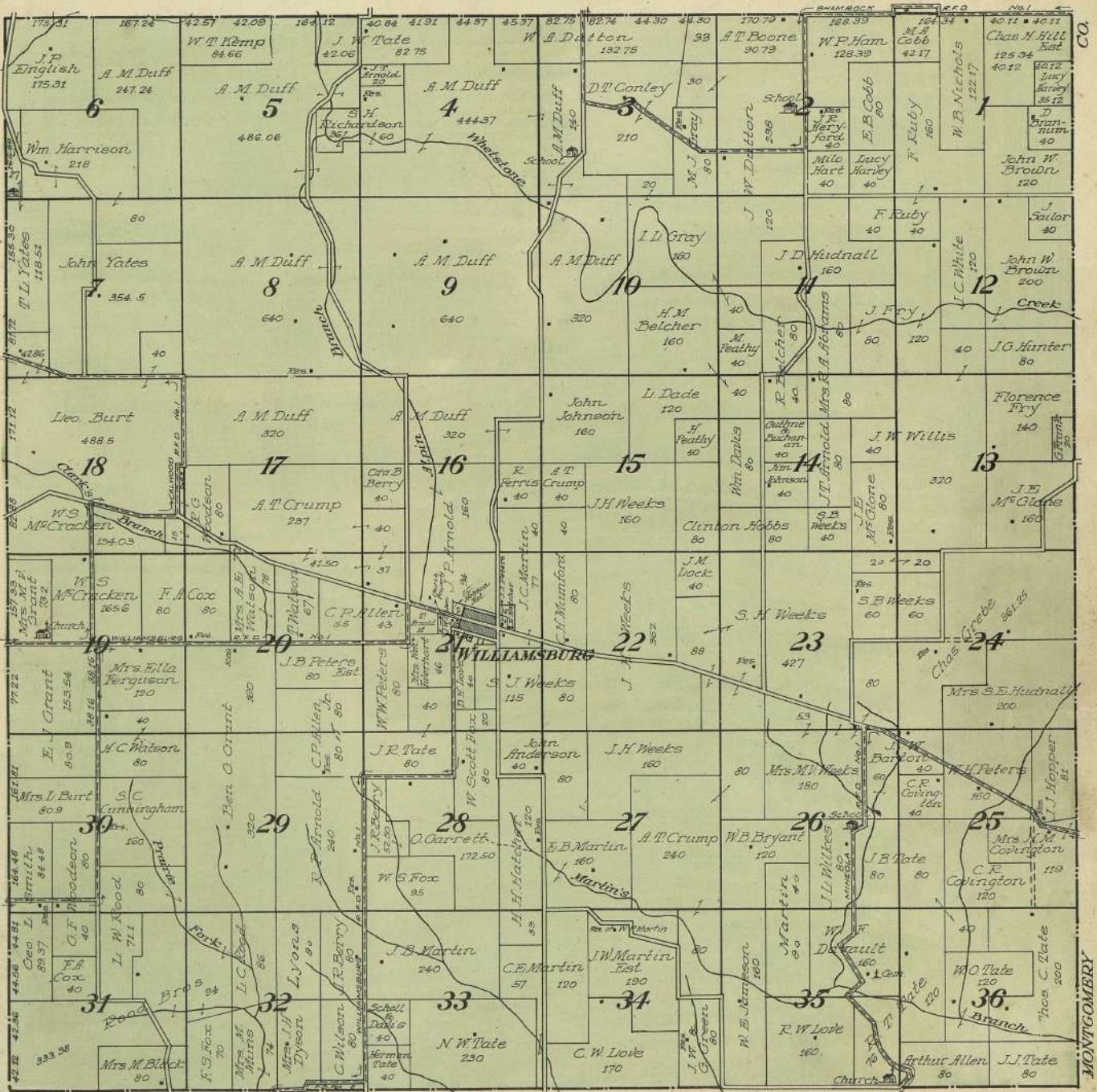
Scale 800 ft. to one inch.

SECTION
 18 17
 19 20
 CORNER

SECTION
 17 16
 24 21
 CORNER



MAP OF
TOWNSHIP 48 N., RANGE 7 W.
 OF THE 5th P. M.
 Scale 2 inches to 1 mile



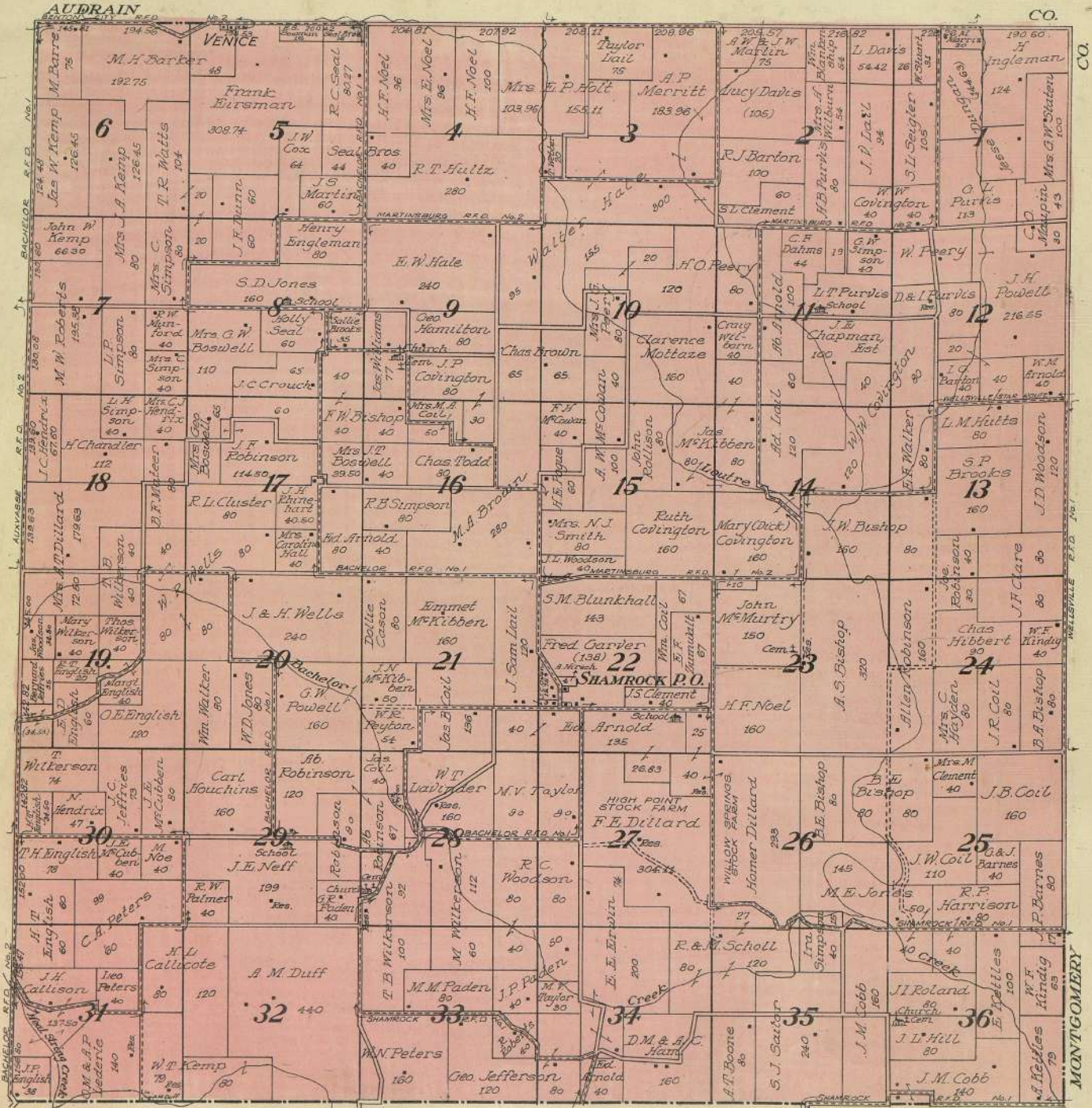
MONTGOMERY

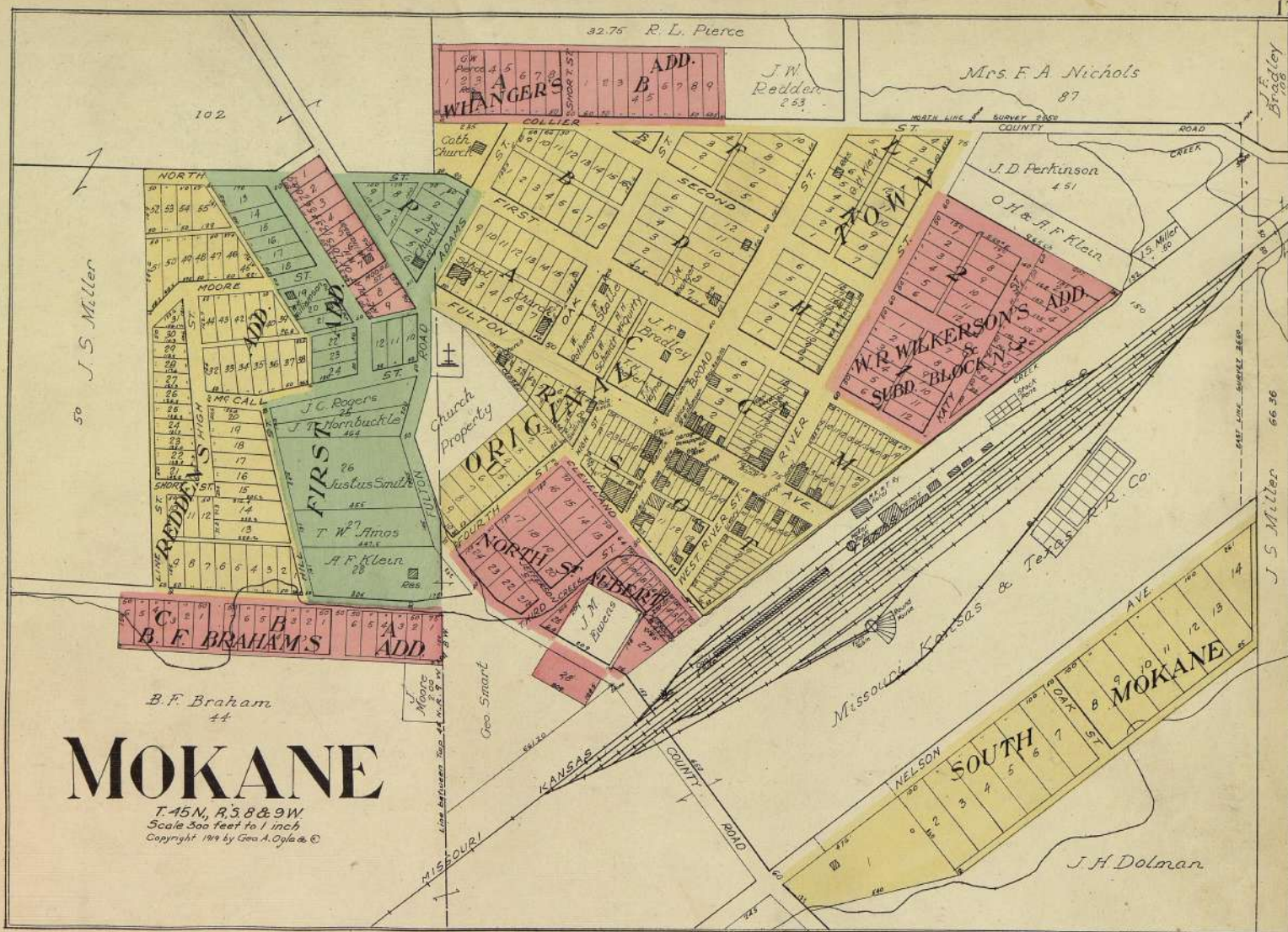
MAP OF

TOWNSHIP 49 N., RANGE 7 W.

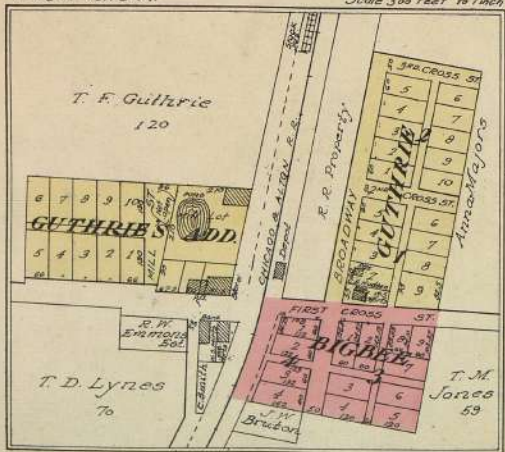
 OF THE 5th P. M.

Scale 2 inches to 1 mile

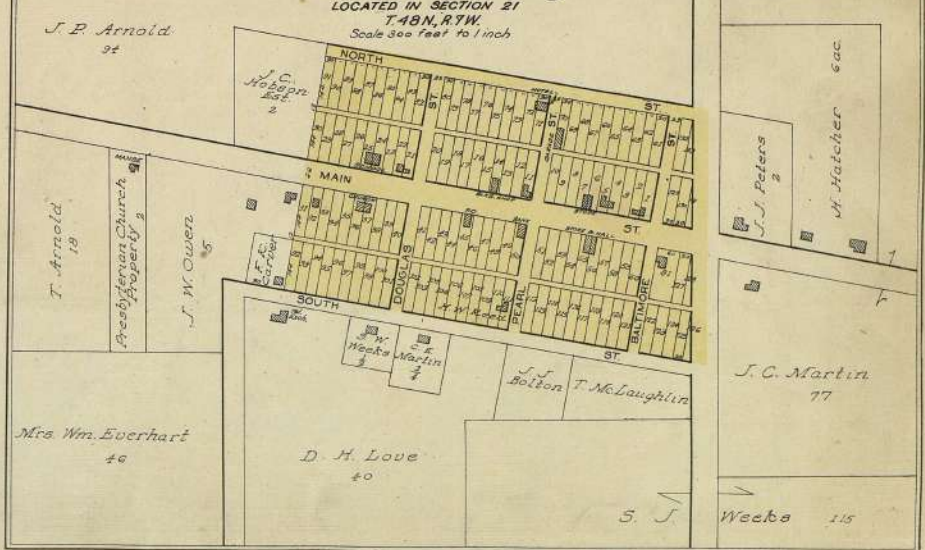




GUTHRIE
T.46N-R.10W. LOCATED IN SECTIONS 18 AND 20
Scale 300 feet to 1 inch

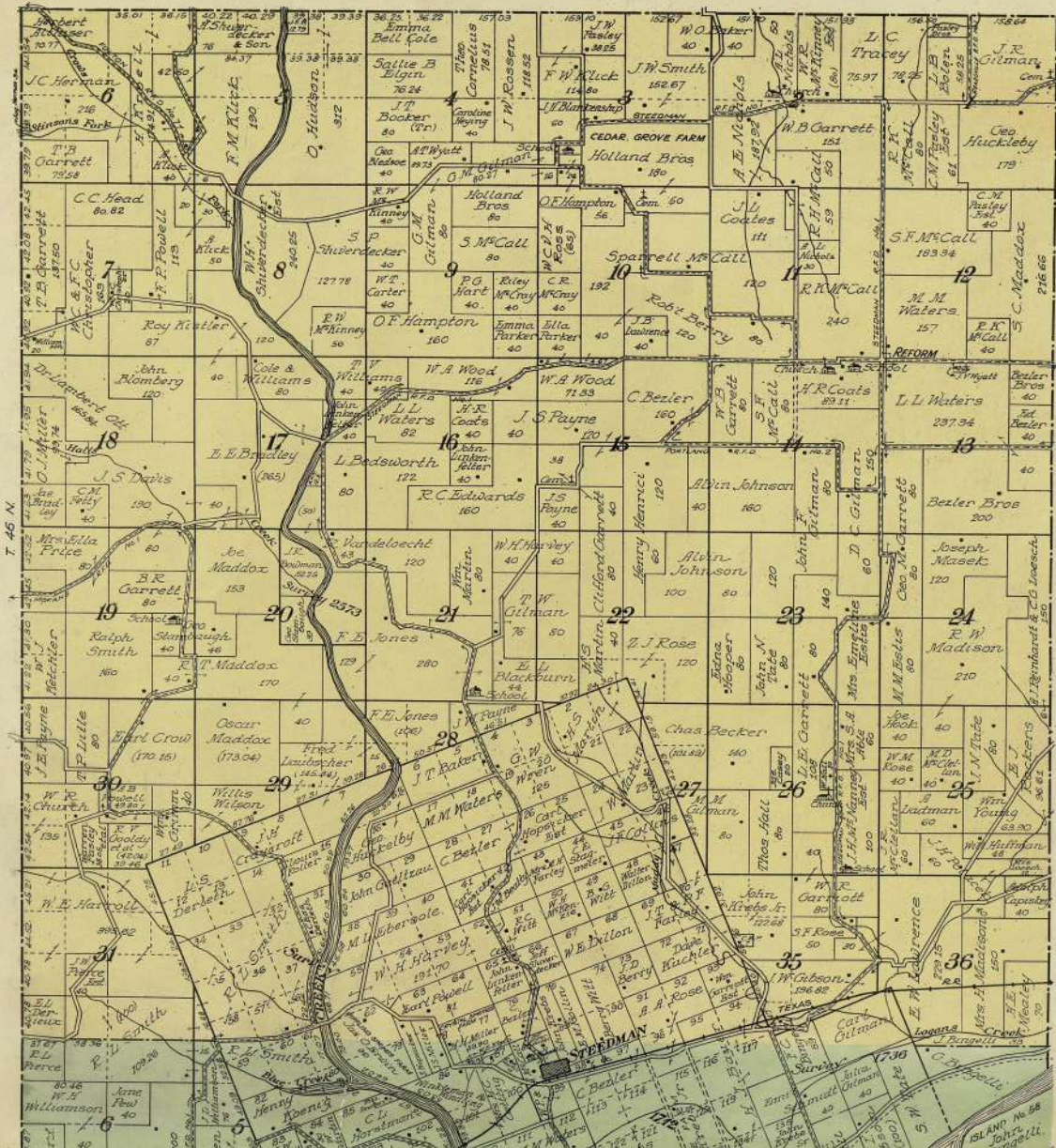


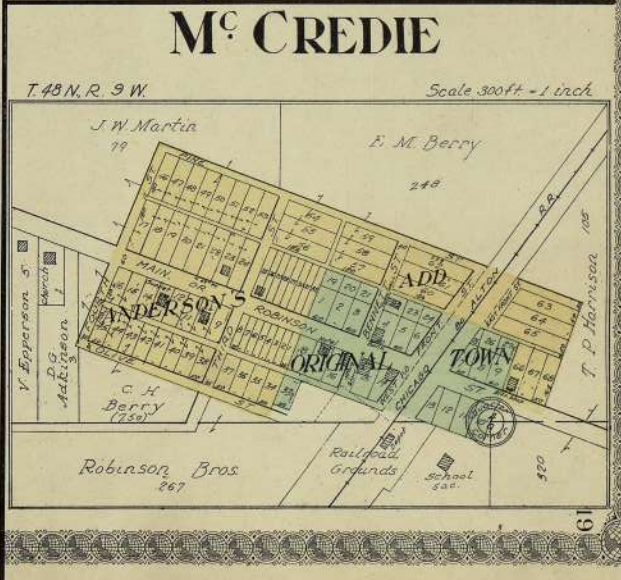
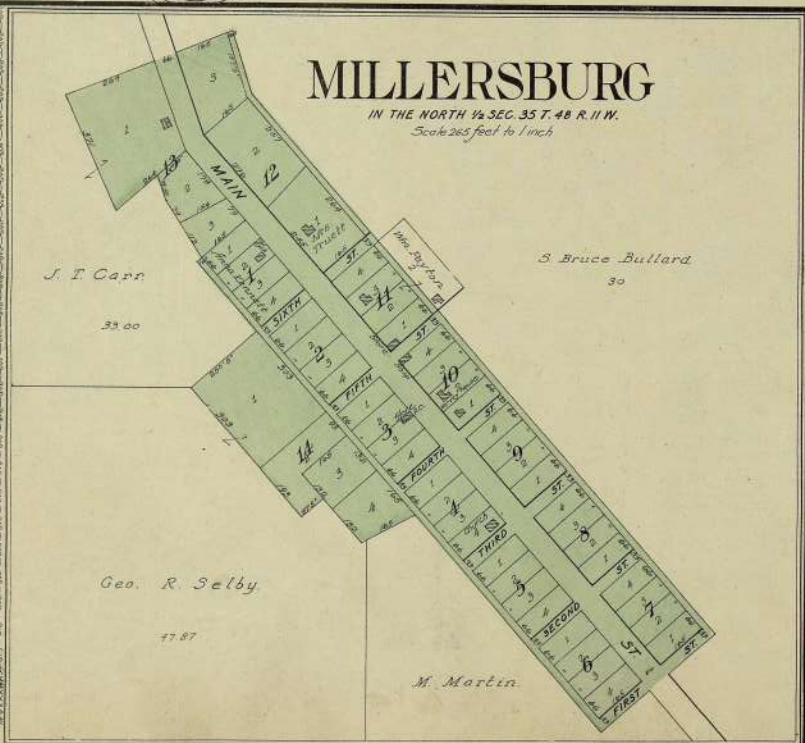
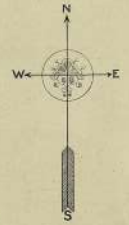
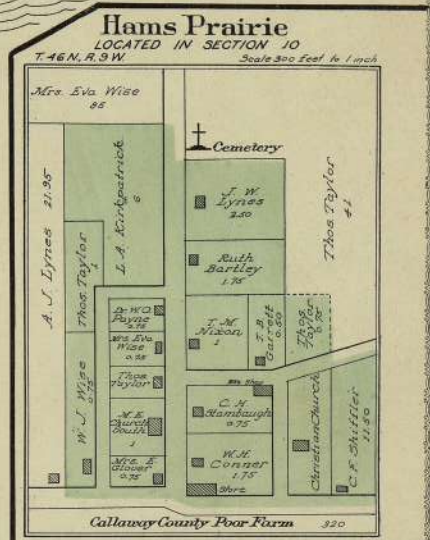
Williamsburg



MAP OF
 TOWNSHIP 46 N., RANGE 8 W. and
 PART of TOWNSHIP 45 N., RANGE 8 W.

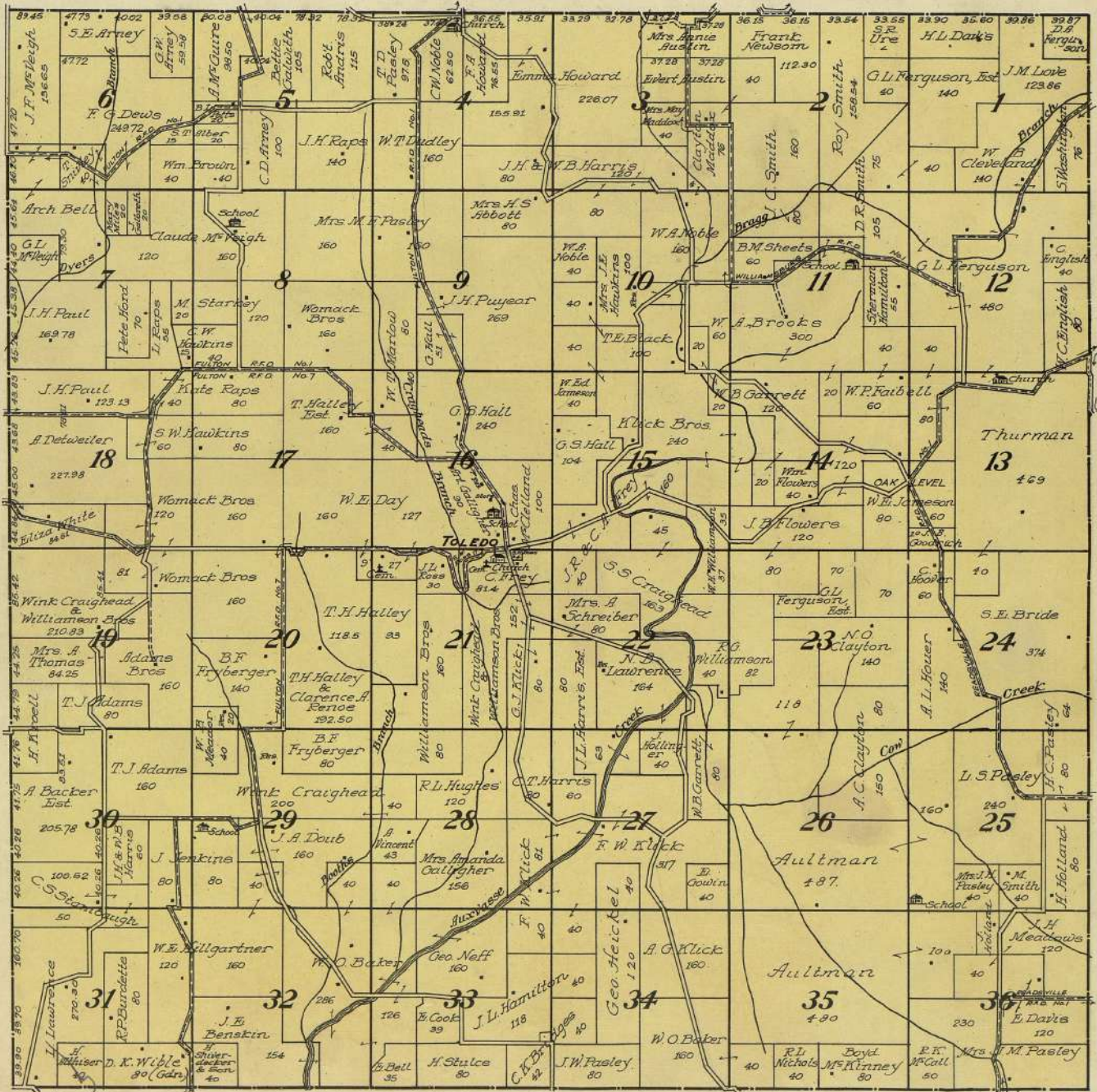
OF THE 5th P. M. Scale 2 inches to 1 mile

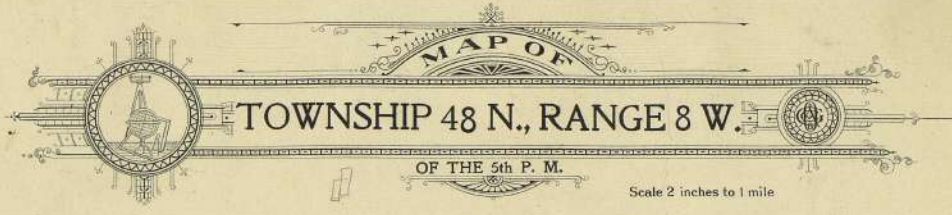




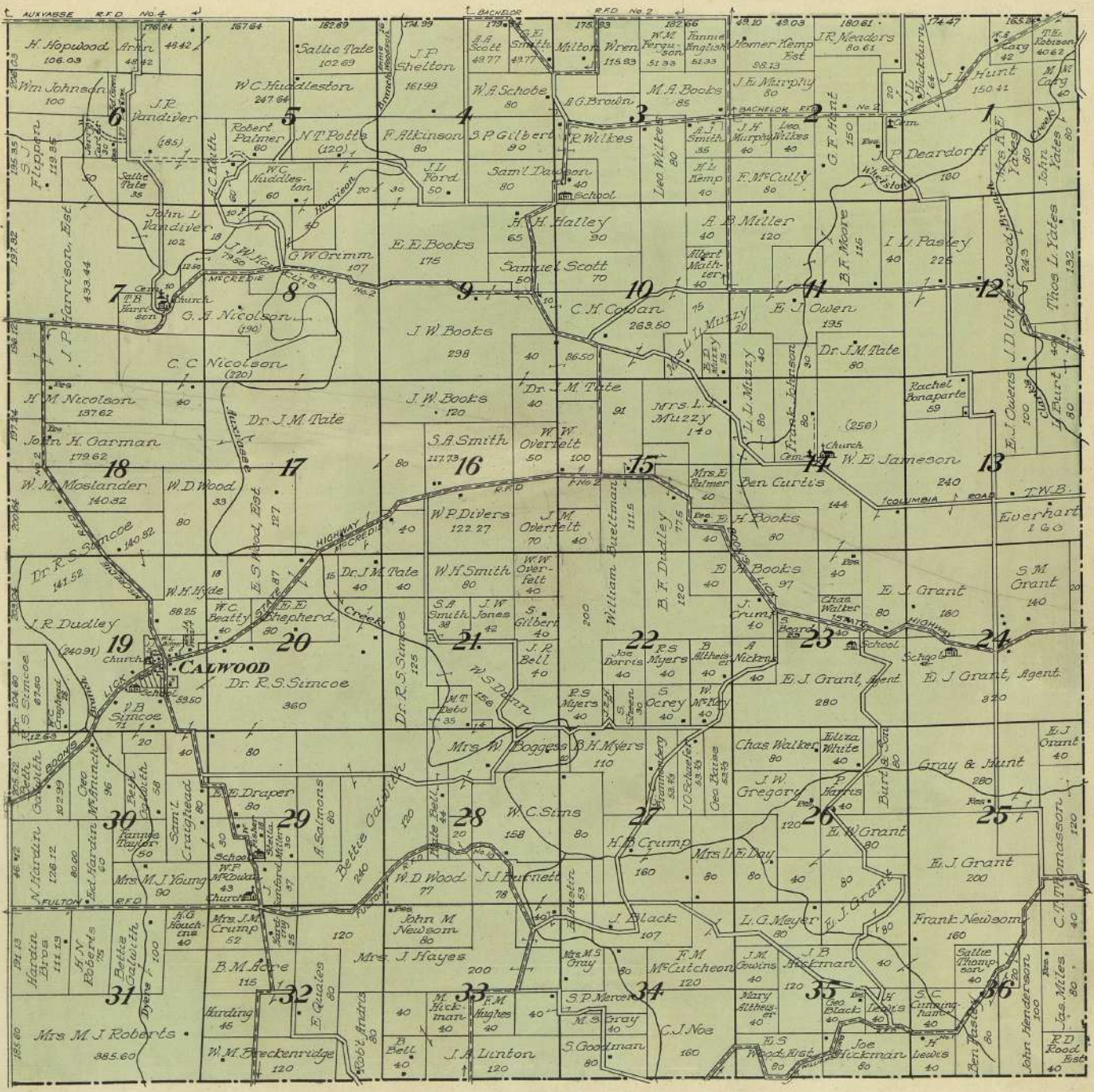


MAP OF
TOWNSHIP 47 N., RANGE 8 W.
 OF THE 5th P. M.
 Scale 2 inches to 1 mile





MAP OF
TOWNSHIP 48 N., RANGE 8 W.
 OF THE 5th P. M.
 Scale 2 inches to 1 mile

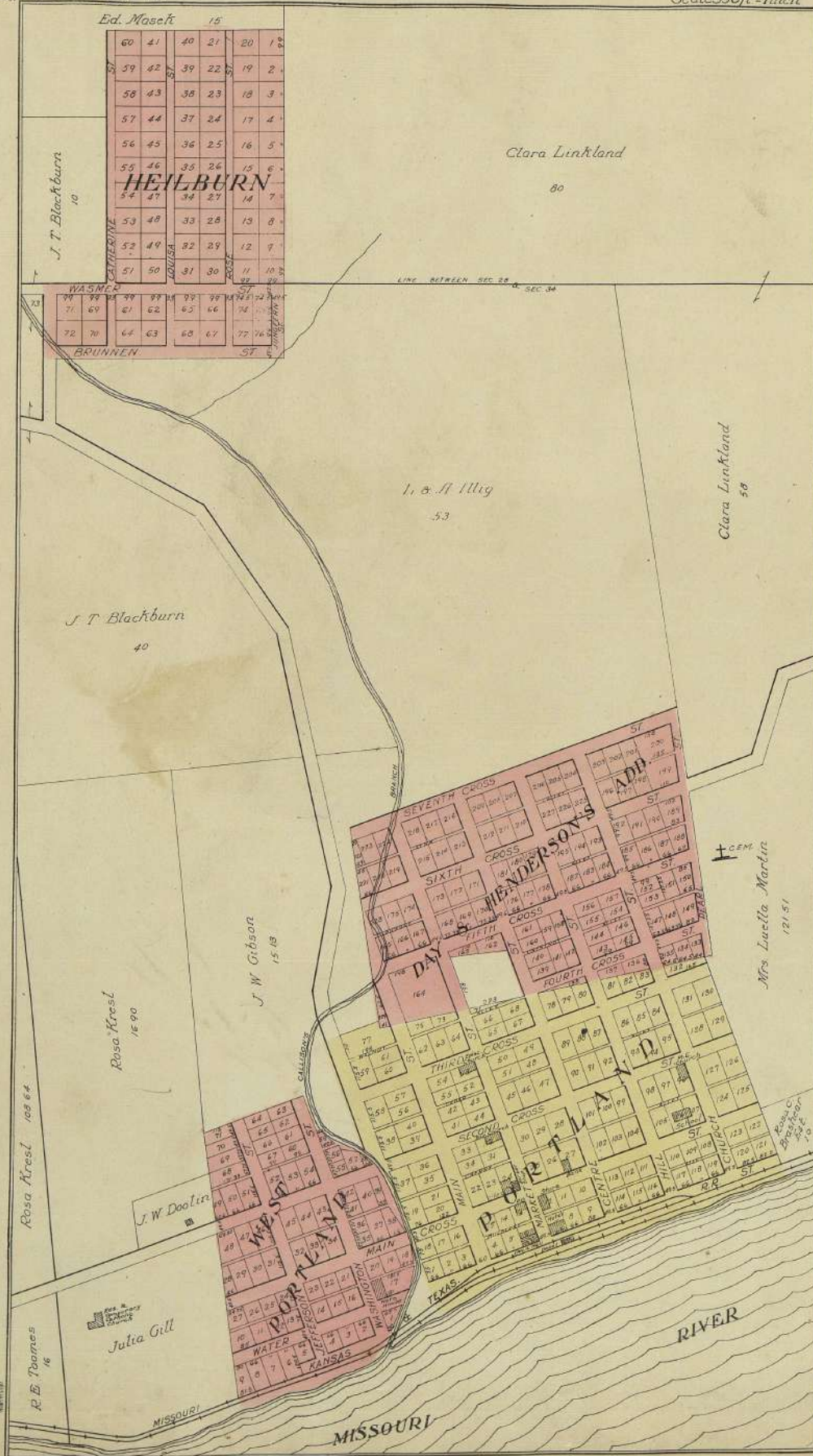


PORTLAND & HEILBURN

T. 46 N. R. 7 W.

Located in Sec. 33 & 28

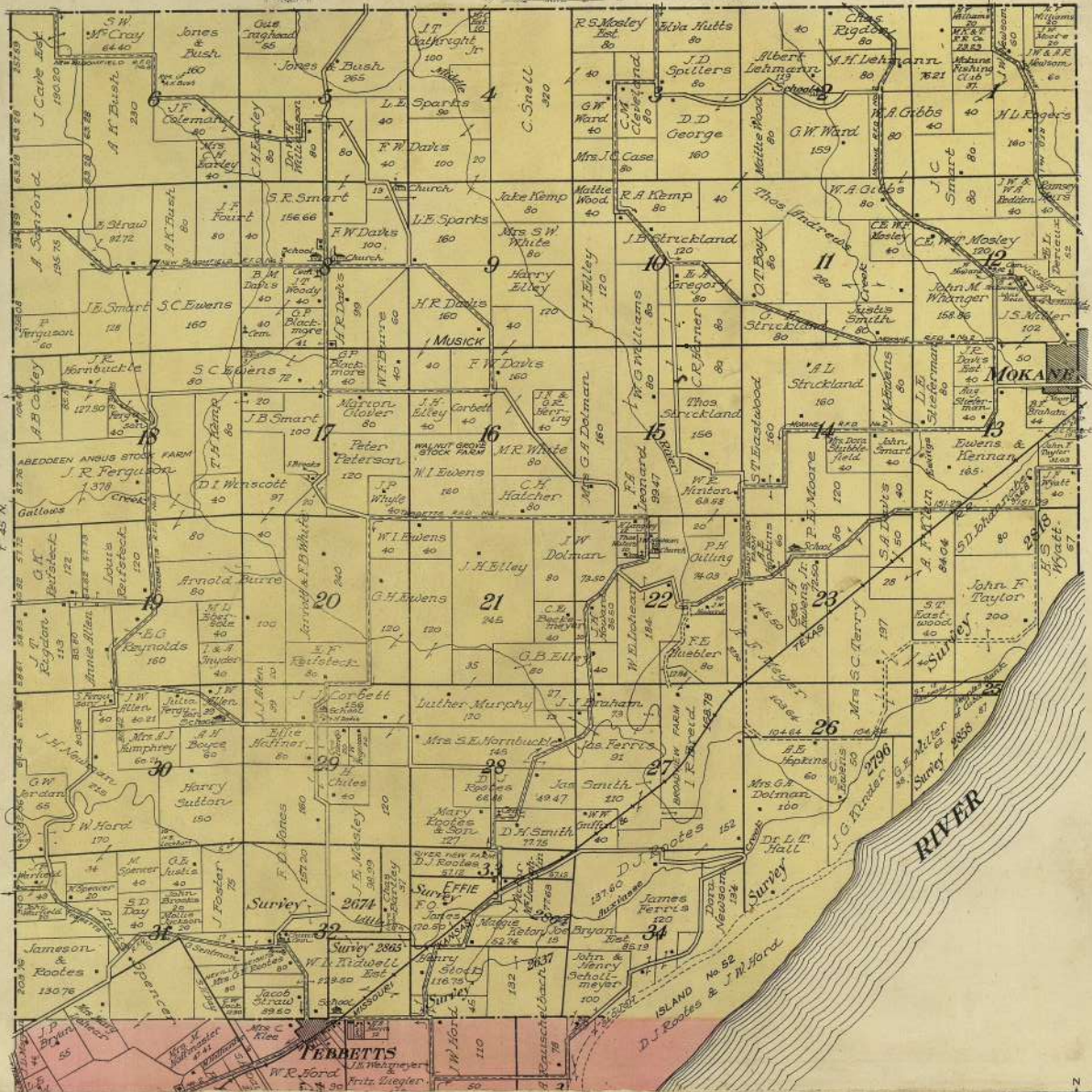
Scale 350ft = 1 inch

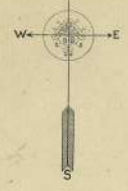


MAP OF

Part of Townships 44 and 45 N., Range 9 W.

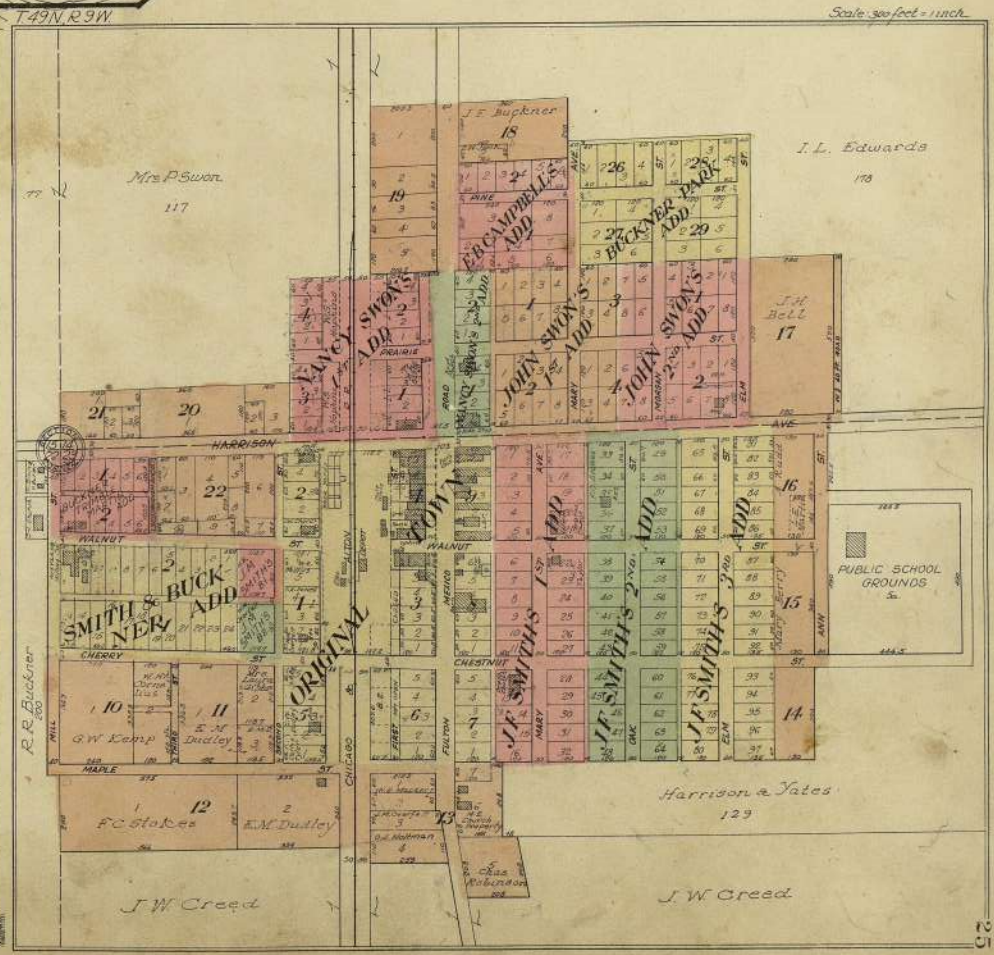
OF THE 5th P. M. Scale 2 inches to 1 mile





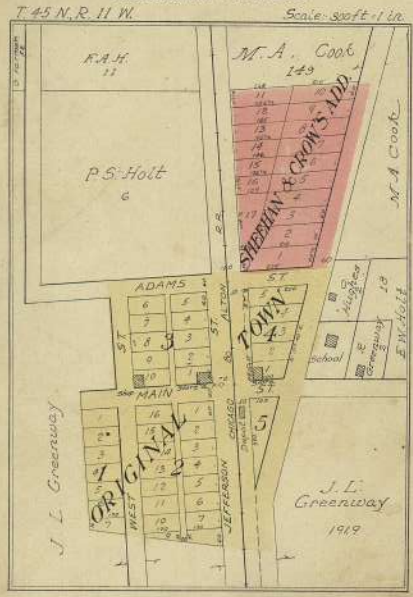
AUXVASSE

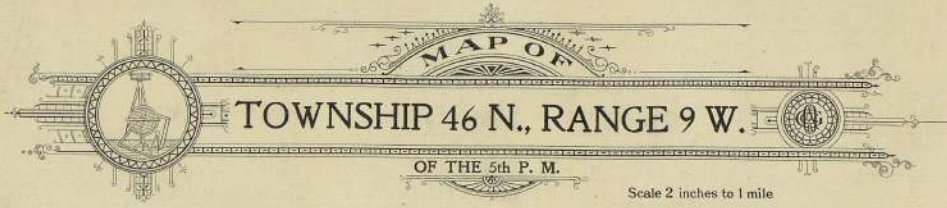
PLATTED AS CLINTON CITY



HOLT'S SUMMIT

HIBERNIA STATION



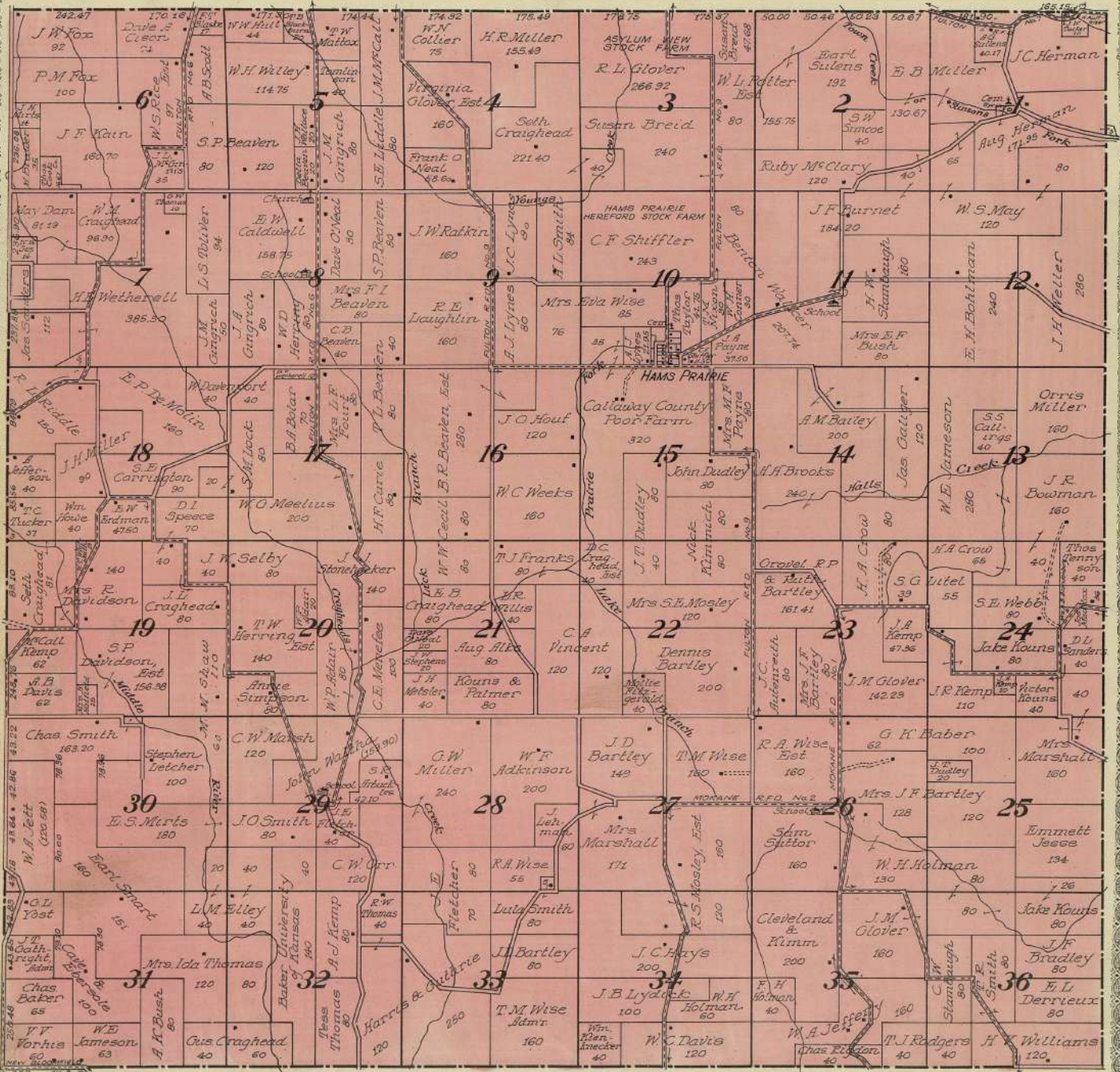


MAP OF

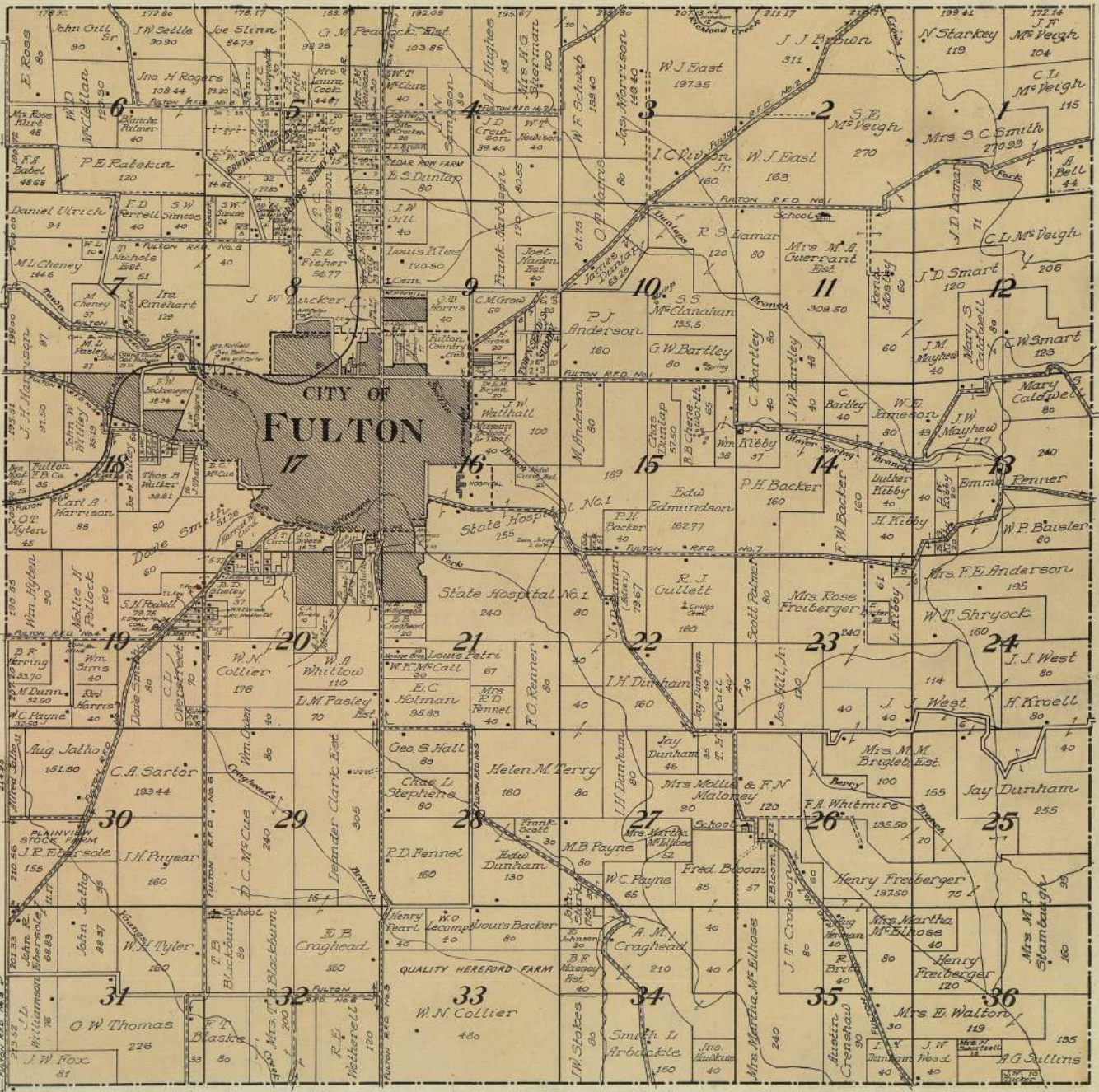
TOWNSHIP 46 N., RANGE 9 W.


 OF THE 5th P. M.

Scale 2 inches to 1 mile

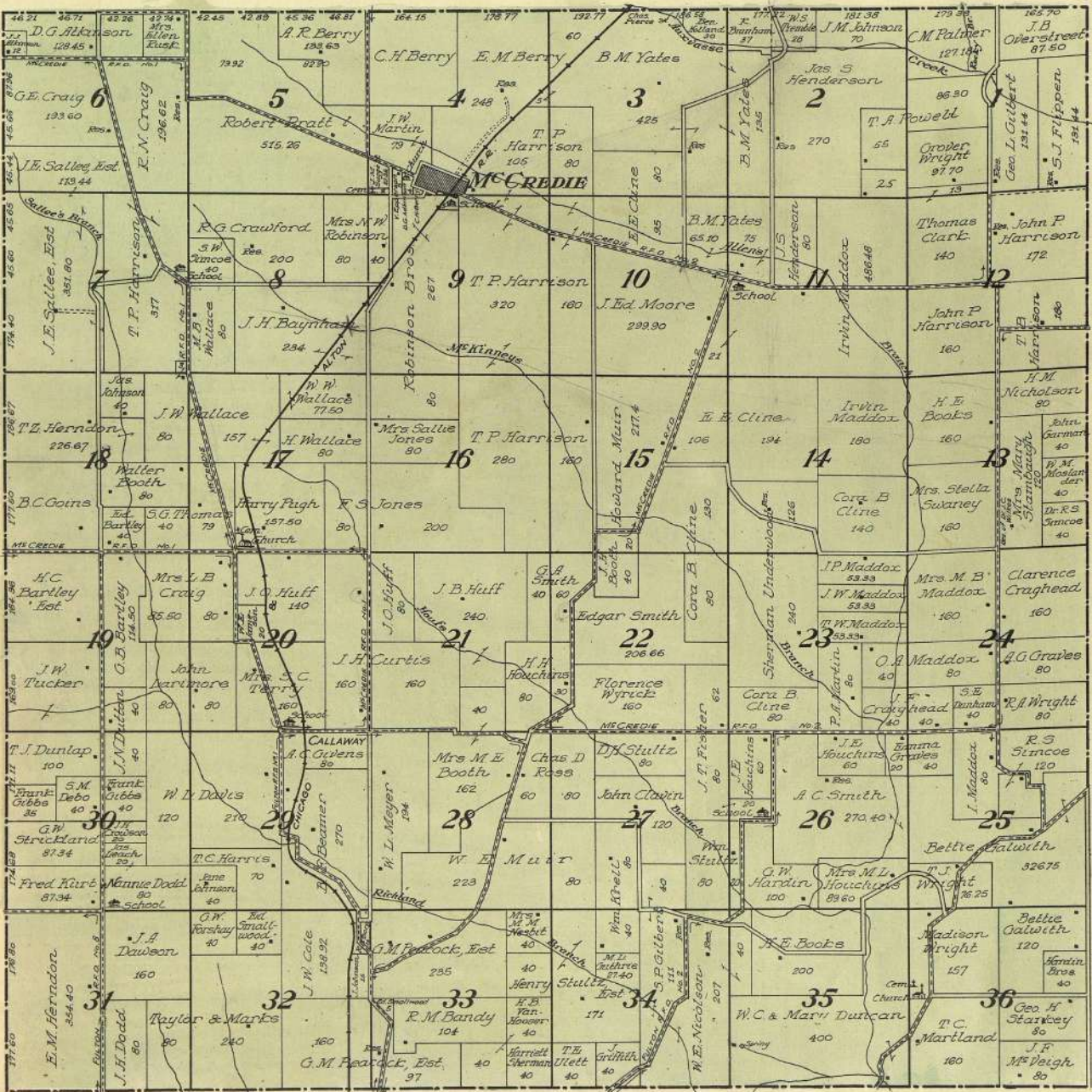


MAP OF
TOWNSHIP 47 N., RANGE 9 W.
OF THE 5th P. M.
 Scale 2 inches to 1 mile

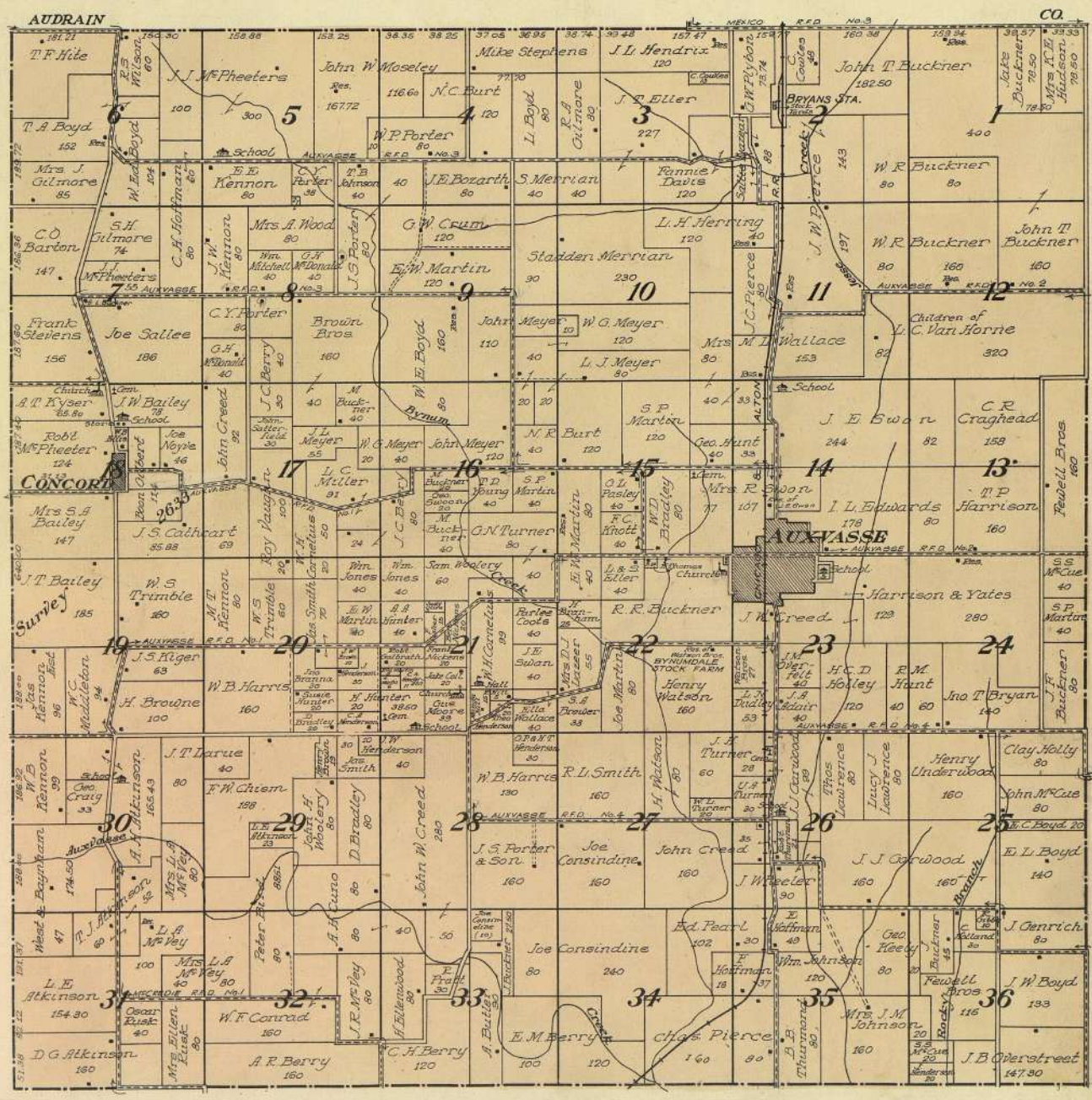




MAP OF
TOWNSHIP 48 N., RANGE 9 W.
 OF THE 5th P. M.
 Scale 2 inches to 1 mile



MAP OF
TOWNSHIP 49 N., RANGE 9 W.
 OF THE 5th P. M.
 Scale 2 inches to 1 mile



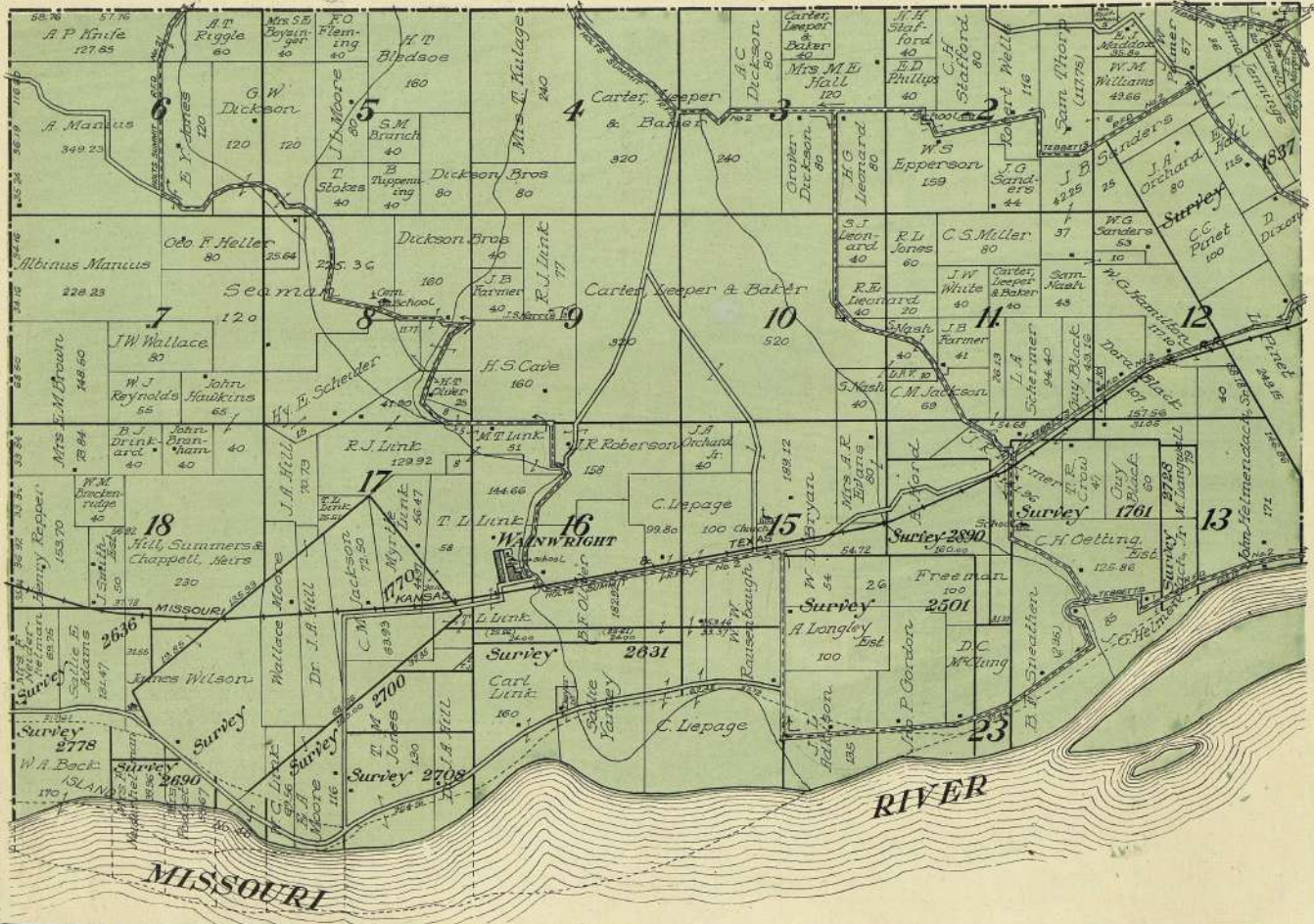


MAP OF

Part of Township 44 N., Range 10 W.

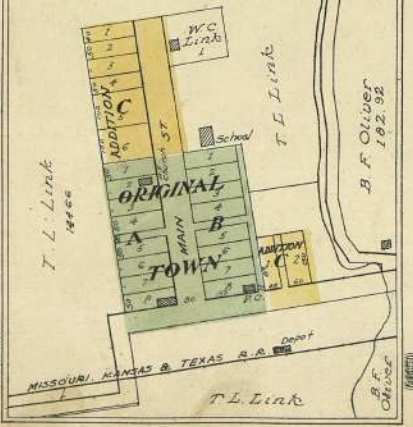
OF THE 5th P. M.

Scale 2 inches to 1 mile

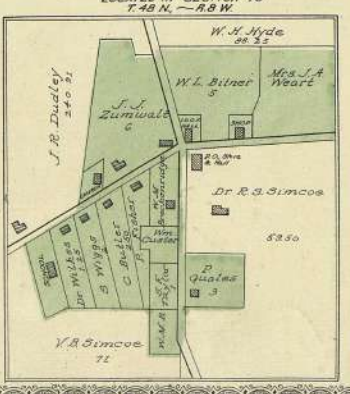


WAINWRIGHT
PLATTED AS LINKVILLE
LOCATED IN SECTION 16

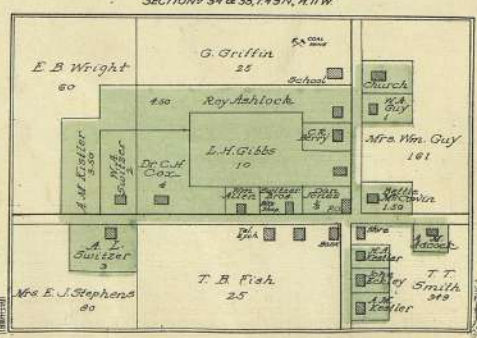
T. 44 N. R. 10 W. Scale 300 ft to 1 inch




CALWOOD
LOCATED IN SECTION 19
T. 44 N., R. 10 W.



STEPHENS
LOCATED IN SECTION 23
T. 44 N., R. 10 W.



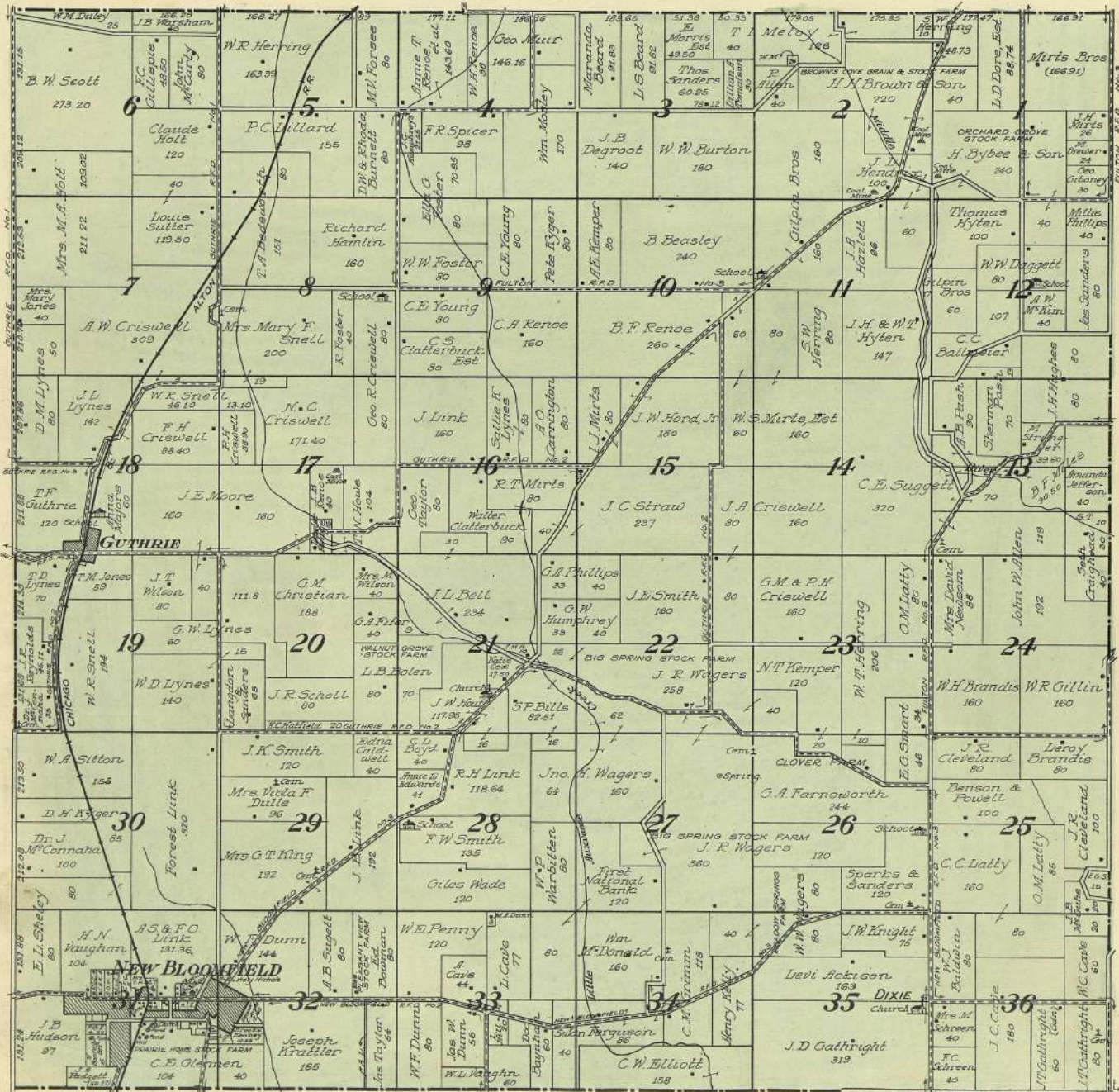


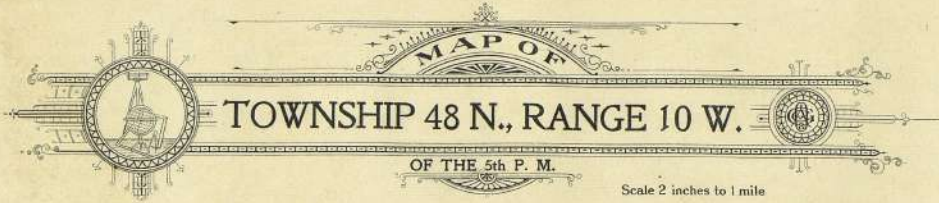
MAP OF

TOWNSHIP 46 N., RANGE 10 W.

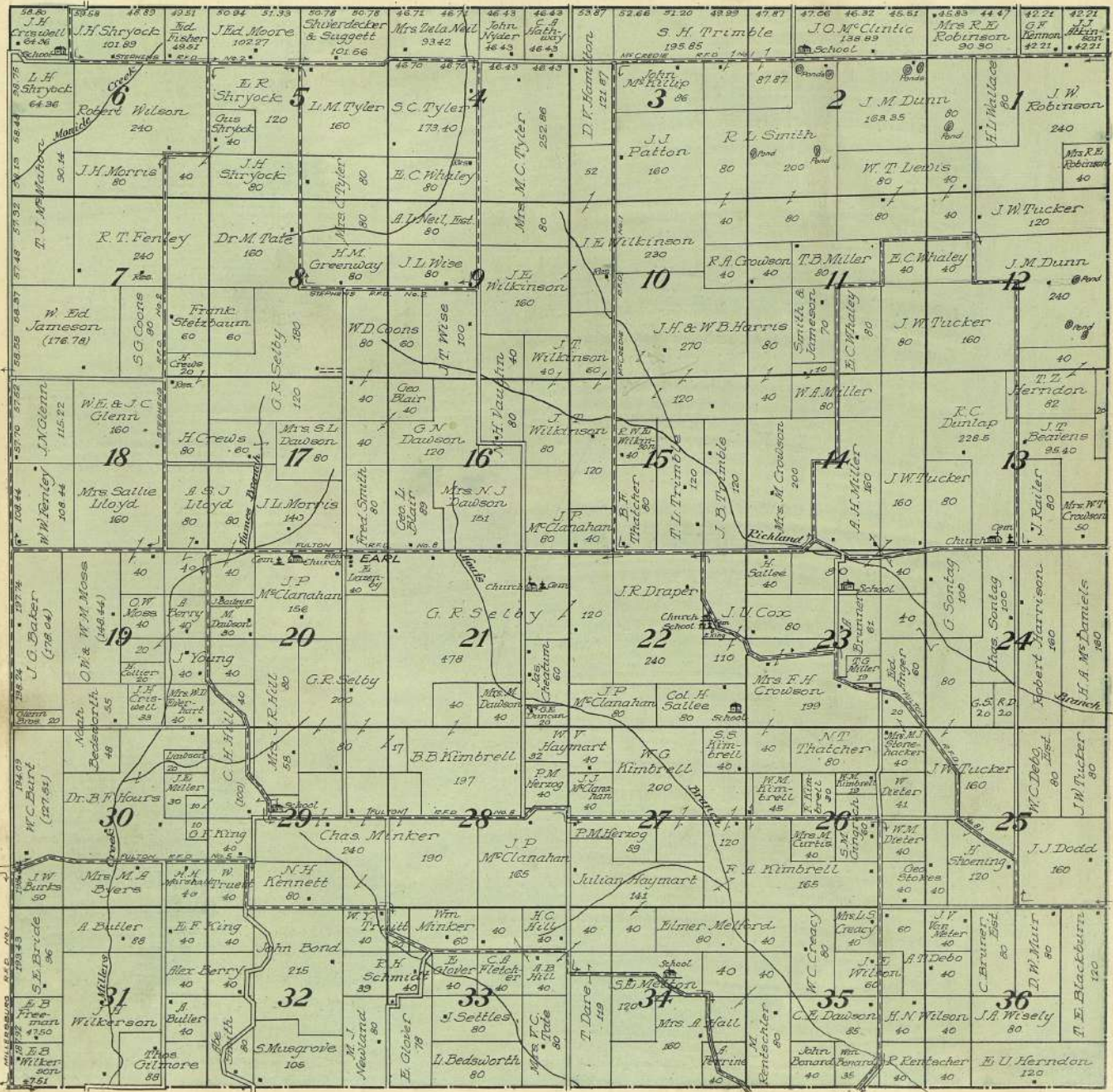
 OF THE 5th P. M.

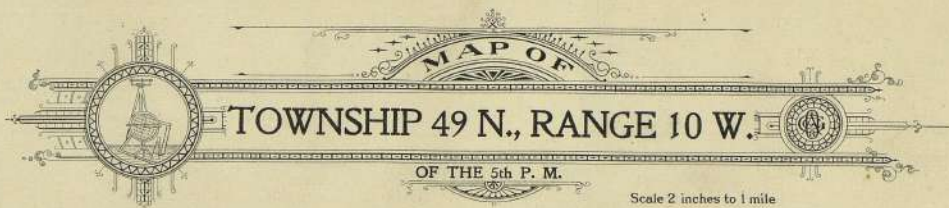
Scale 2 inches to 1 mile



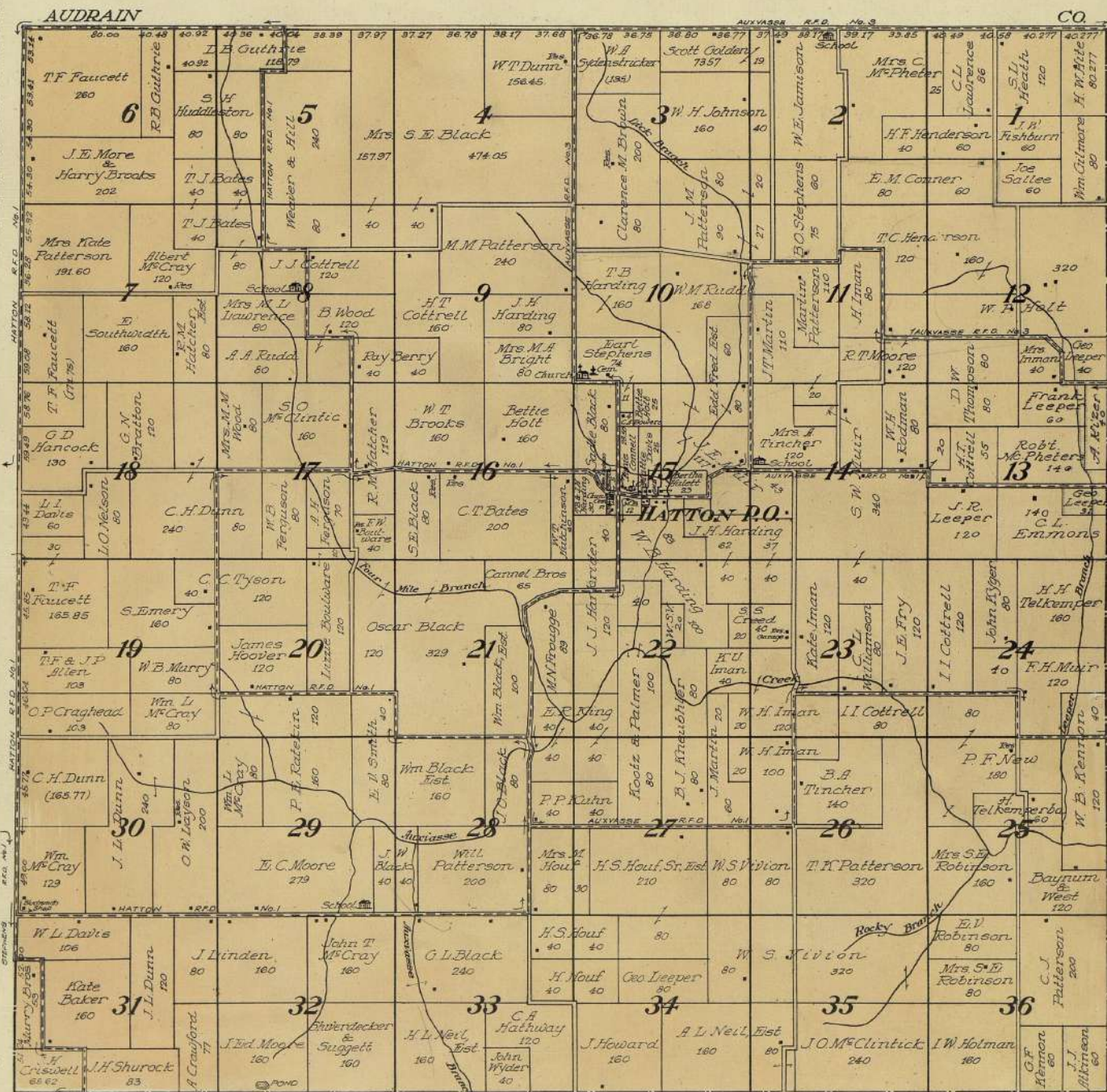


MAP OF
TOWNSHIP 48 N., RANGE 10 W.
 OF THE 5th P. M.
 Scale 2 inches to 1 mile



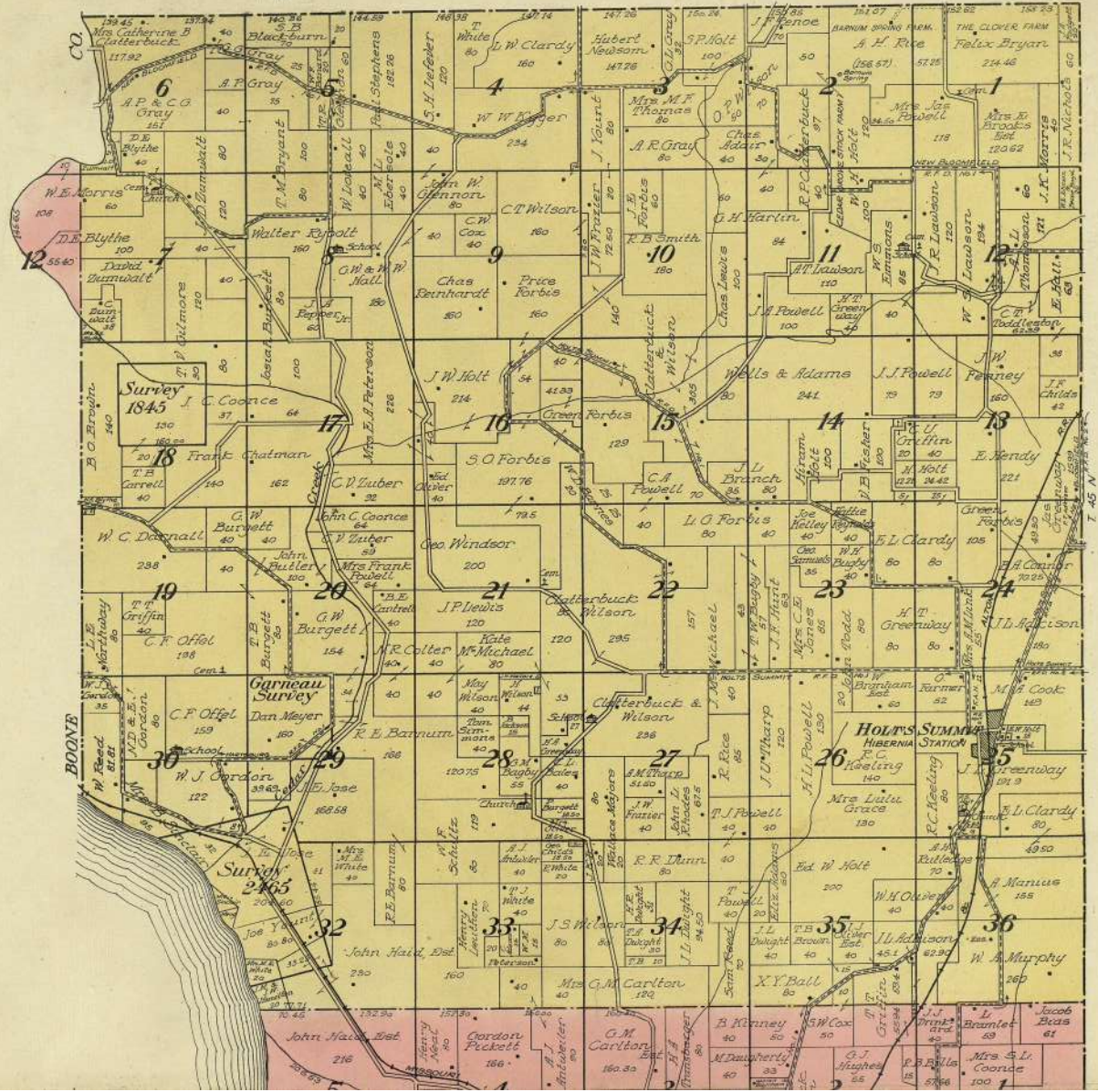


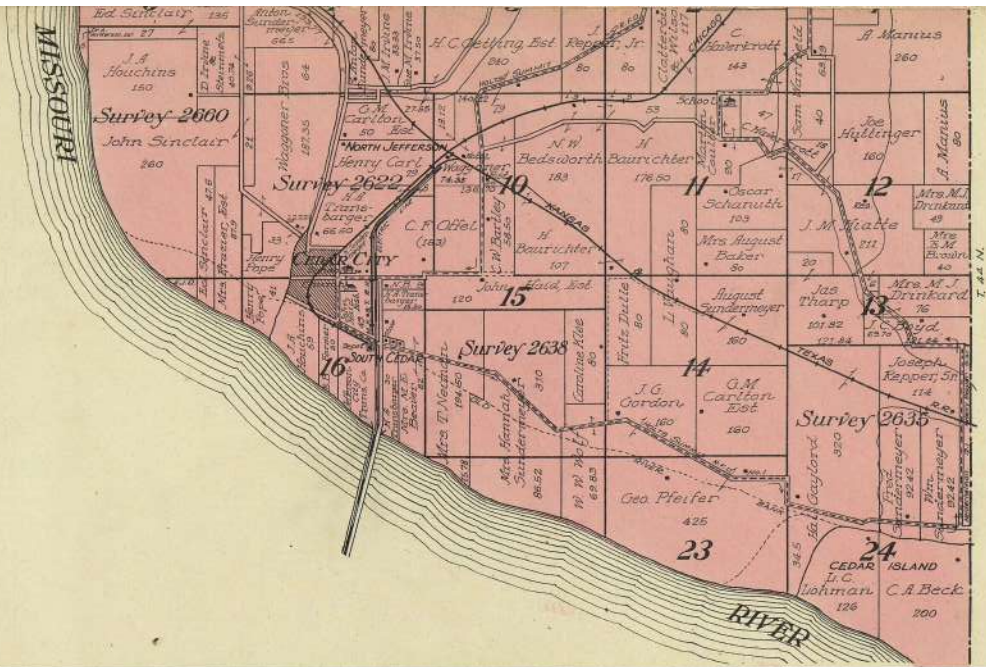
MAP OF
TOWNSHIP 49 N., RANGE 10 W.
OF THE 5th P. M.
 Scale 2 inches to 1 mile



MAP OF
PART of TOWNSHIP 44 N., RANGE 11 W. and
PART of TOWNSHIP 45 N., RANGES 11 and 12 W.

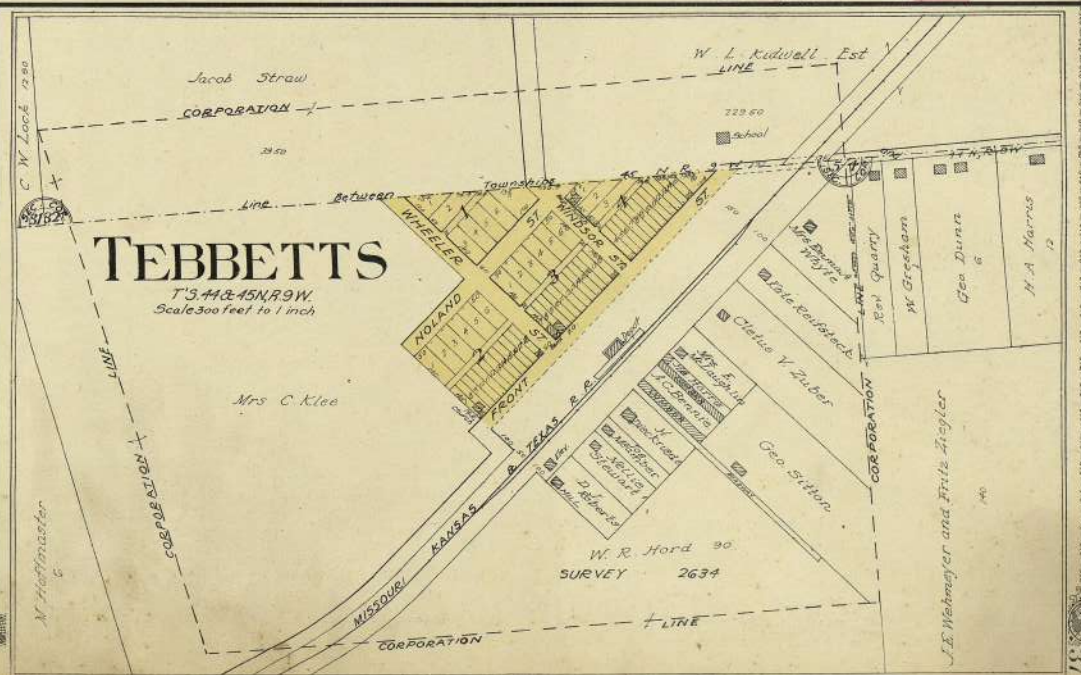
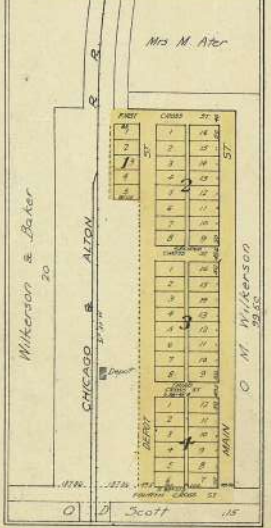
OF THE 5th P. M. Scale 2 inches to 1 mile





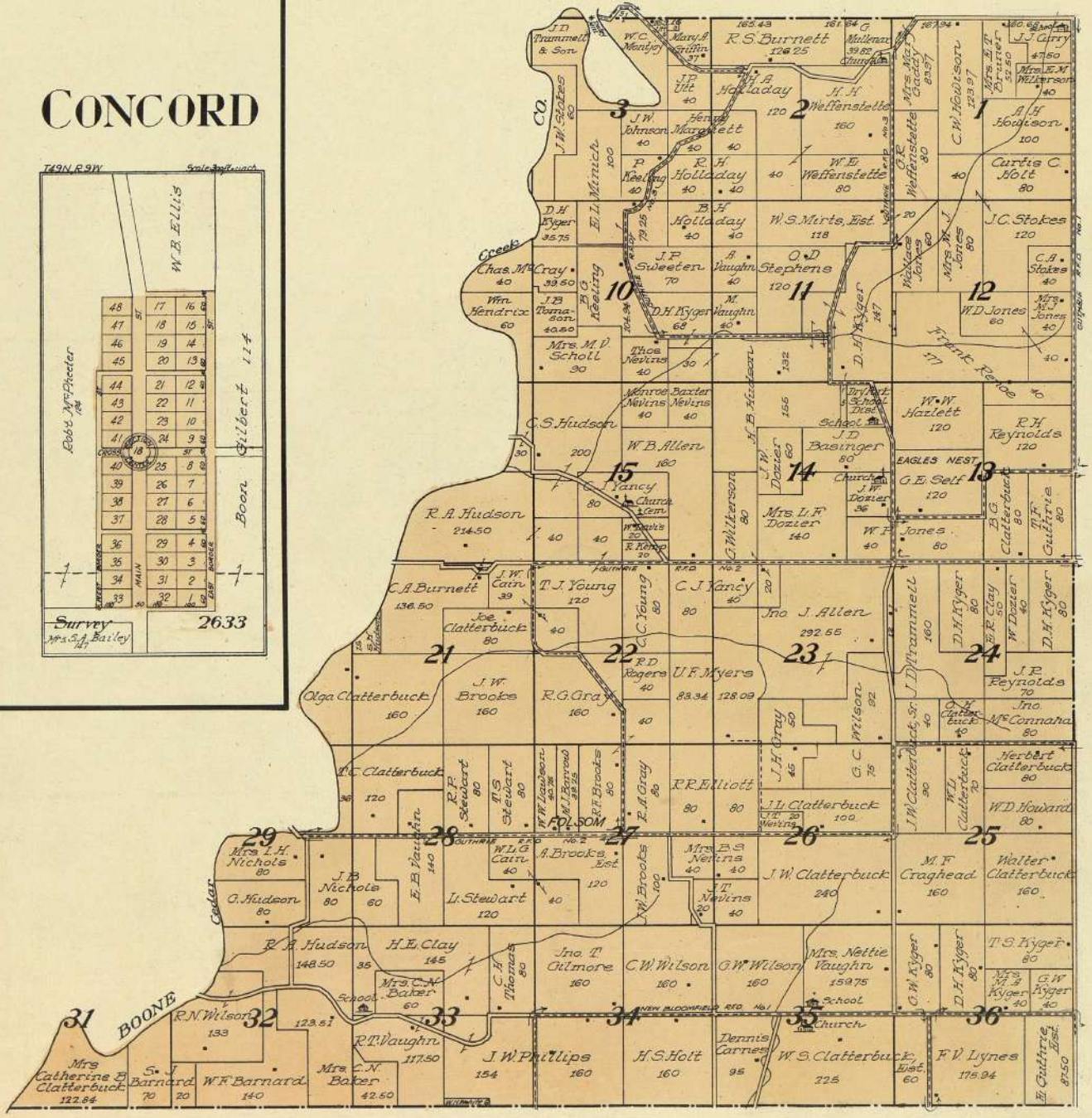
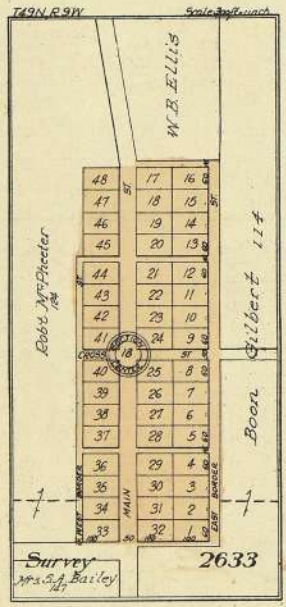
CARRINGTON

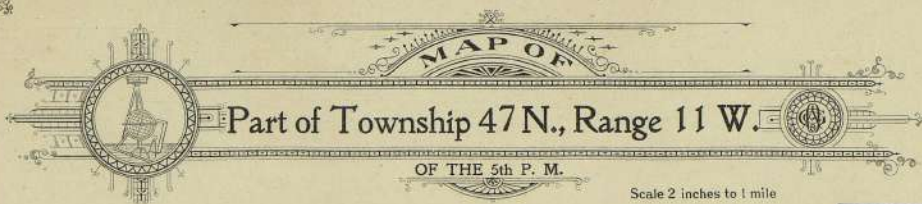
CREATED IN 1863 T. 47 N. R. 10 W. Scale 200 feet to an inch



MAP OF
 Part of Township 46 N., Range 11 W.
 OF THE 5th P. M.
 Scale 2 inches to 1 mile

CONCORD



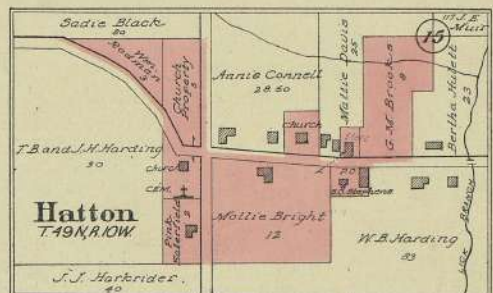
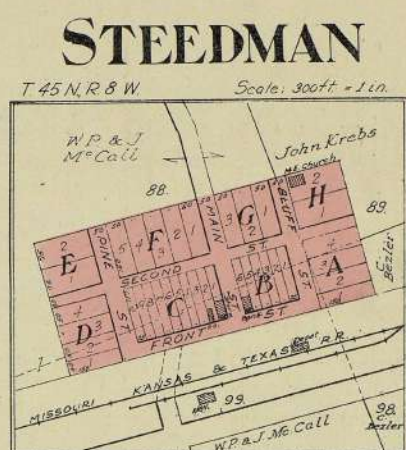
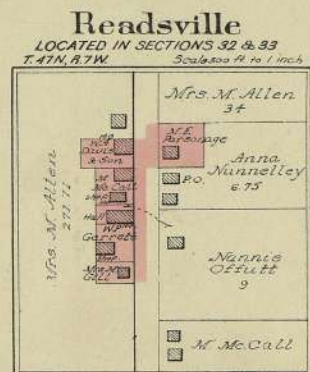
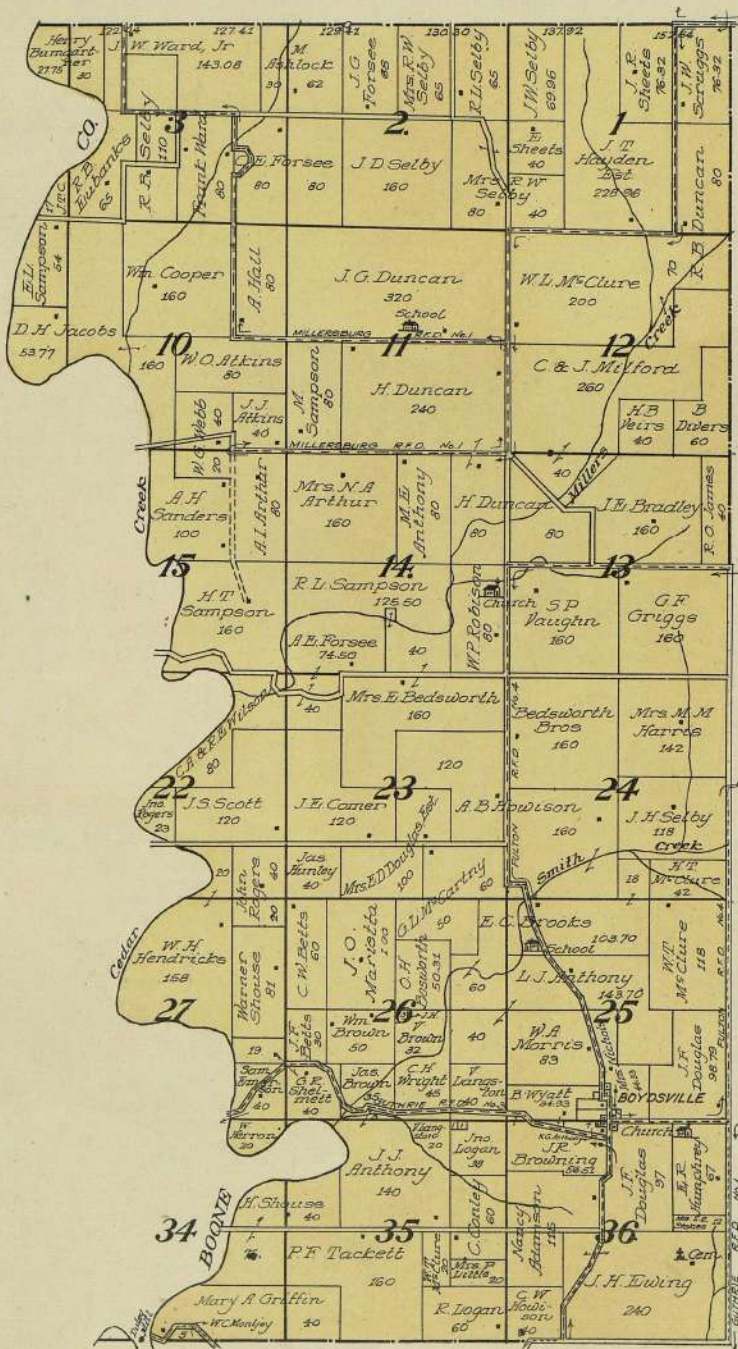


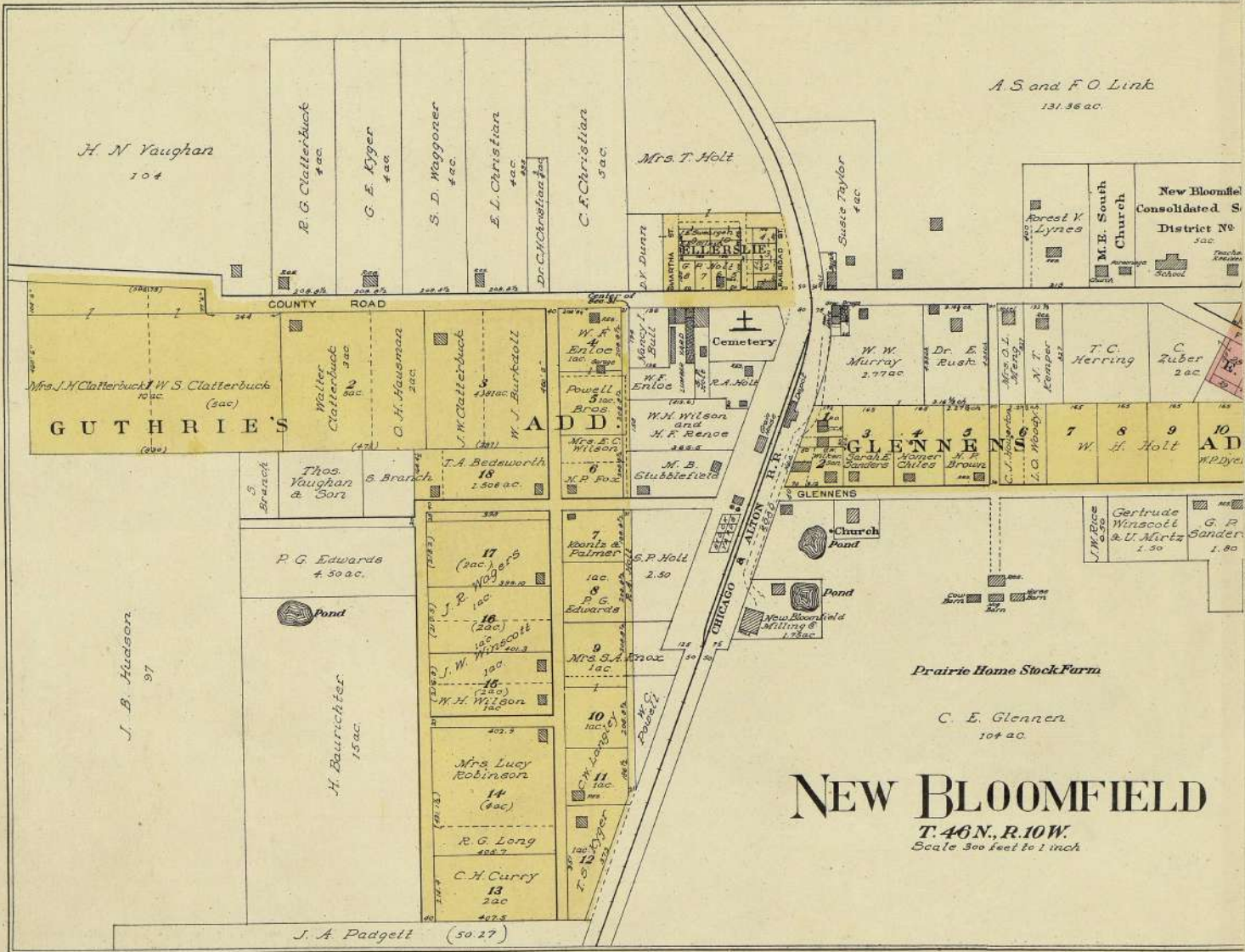
MAP OF

Part of Township 47 N., Range 11 W.

 OF THE 5th P. M.

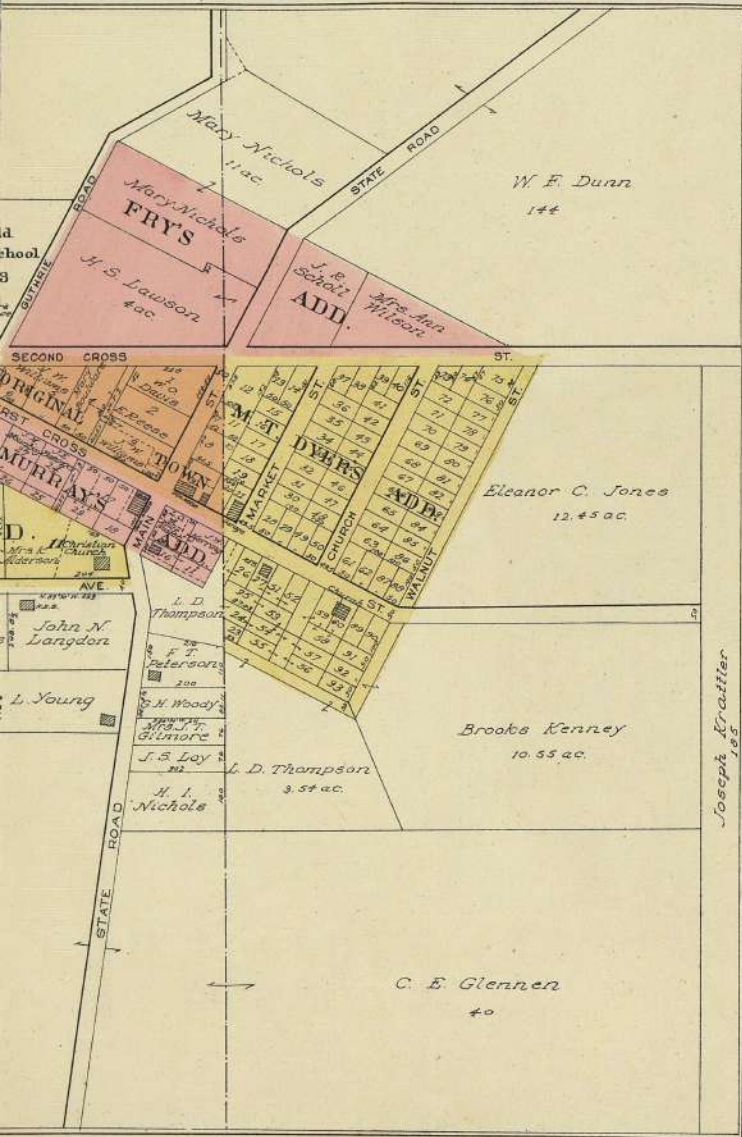
Scale 2 inches to 1 mile





NEW BLOOMFIELD

T. 46 N., R. 10 W.
Scale 300 feet to 1 inch



CEDAR CITY

T. 44 N. R. 11 W.

Scale 300ft. = 1 inch

