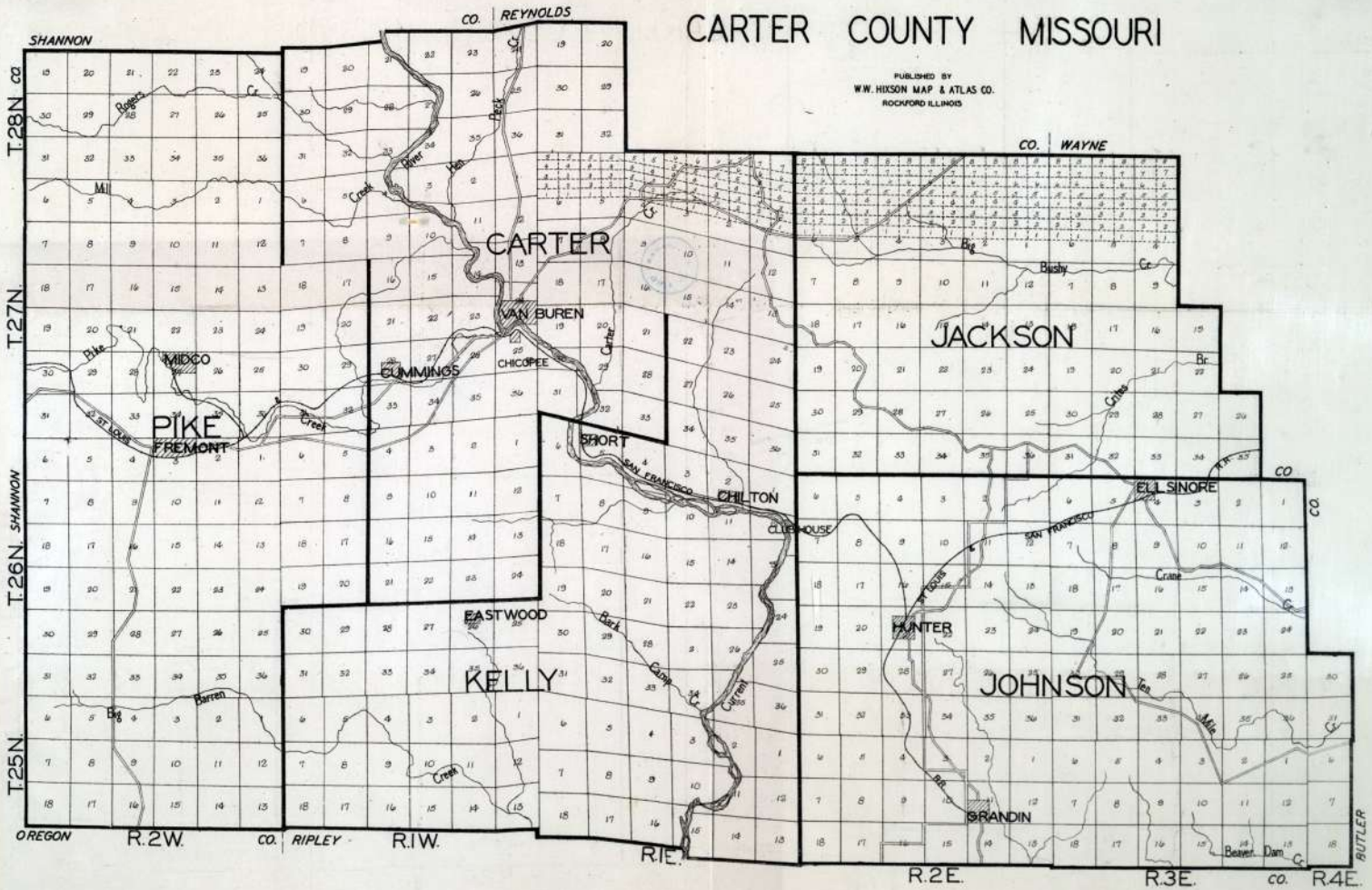


CARTER COUNTY MISSOURI

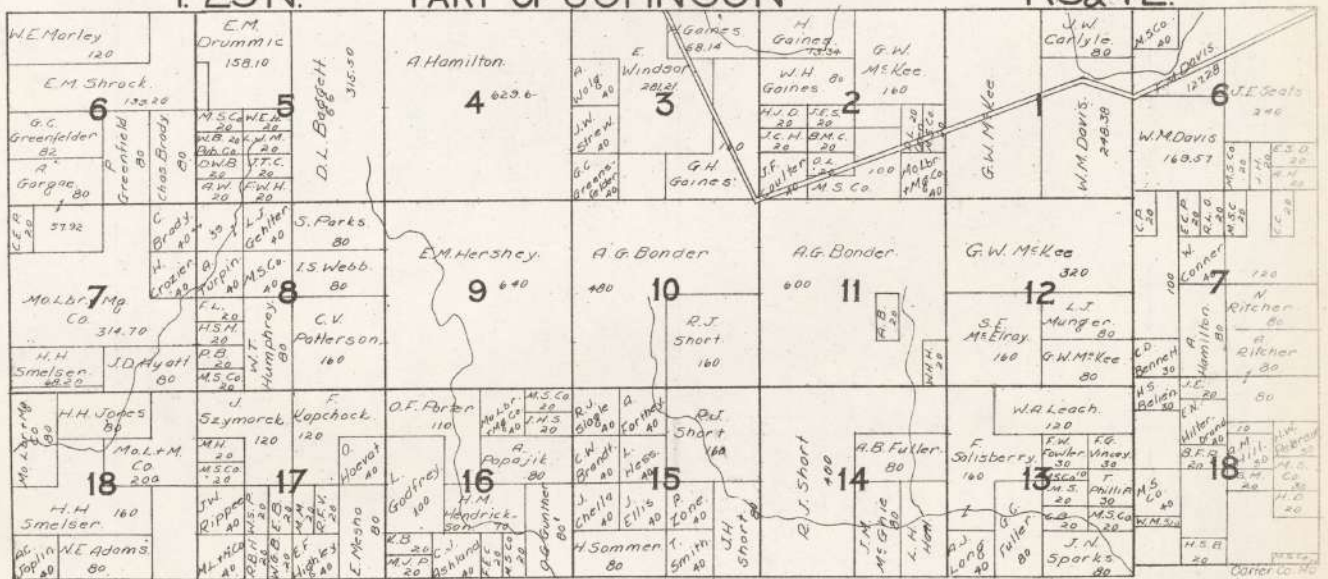
PUBLISHED BY
W.W. HIXSON MAP & ATLAS CO.
ROCKFORD ILLINOIS



T. 25 N.

PART OF JOHNSON

R3&4E.



T.26N.

PART OF JOHNSON

R.3&4E.



Copyright Co. Mo.

T.27N. PART OF JACKSON

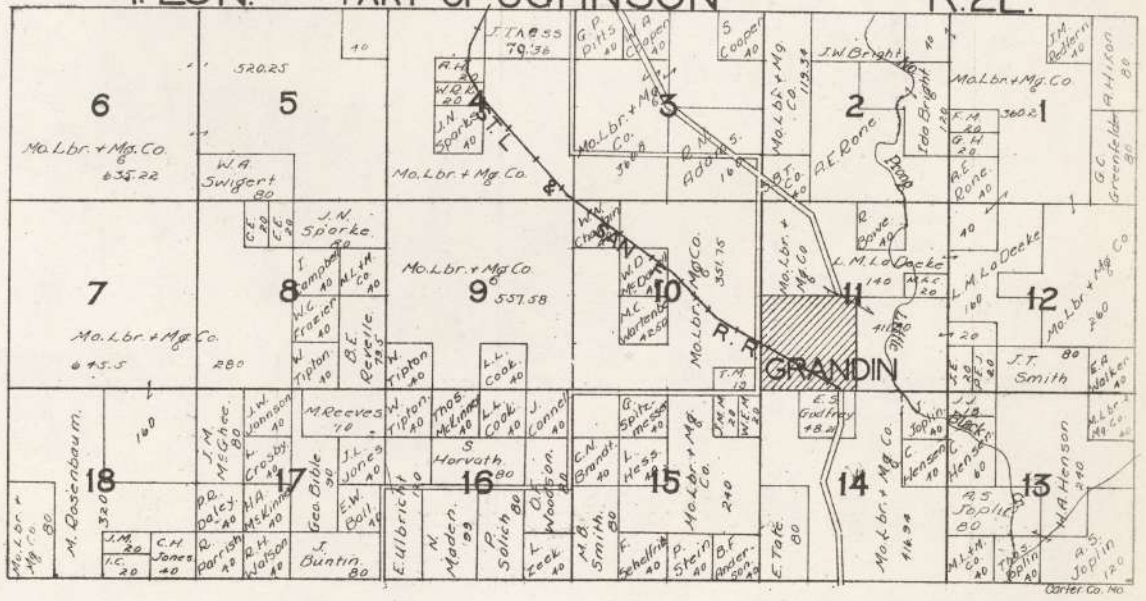
R.3E.



T. 25 N.

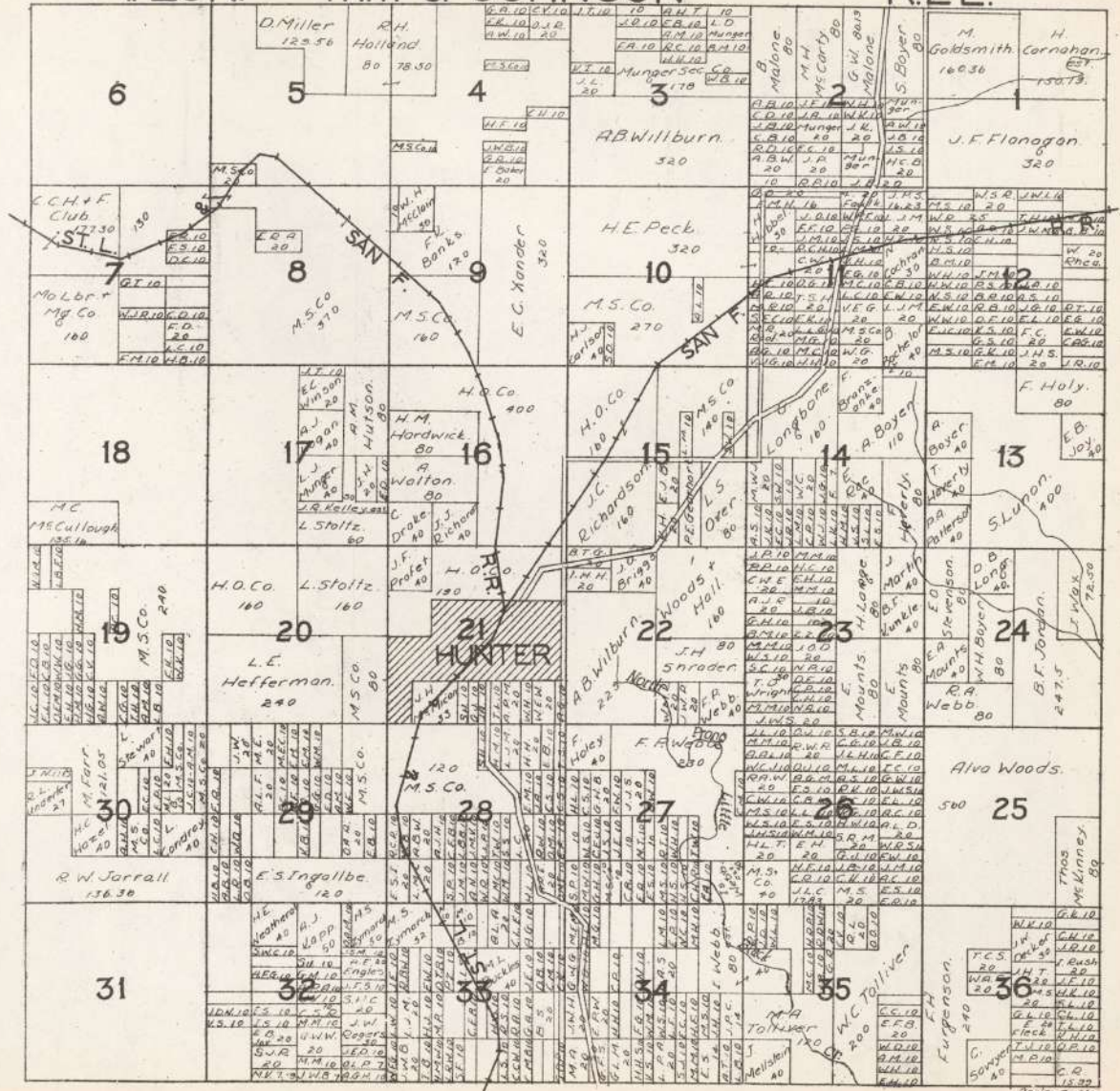
PART OF JOHNSON

R. 2 E.



T.26N. PART OF JOHNSON

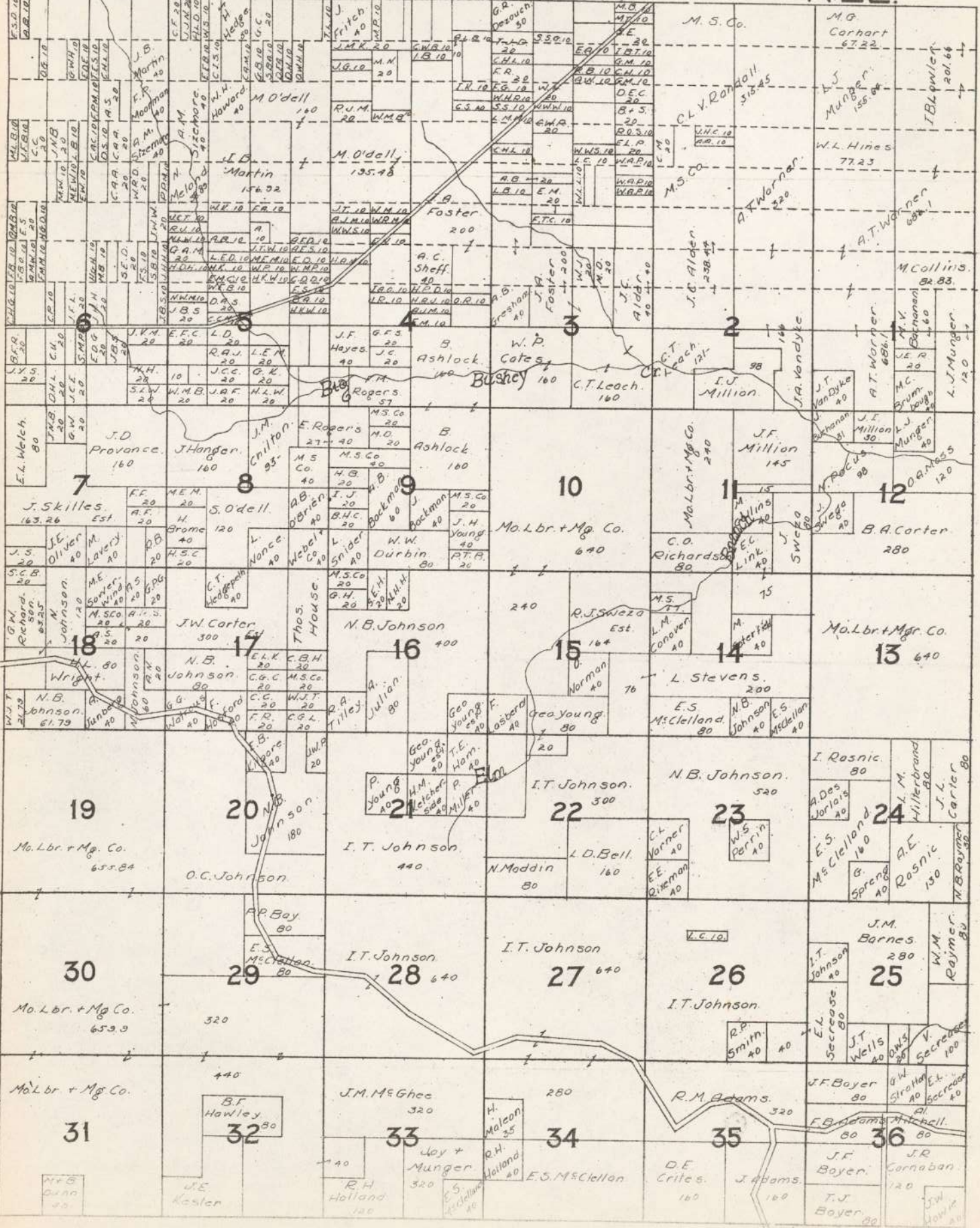
R.2E.



T.27N.

PART OF JACKSON

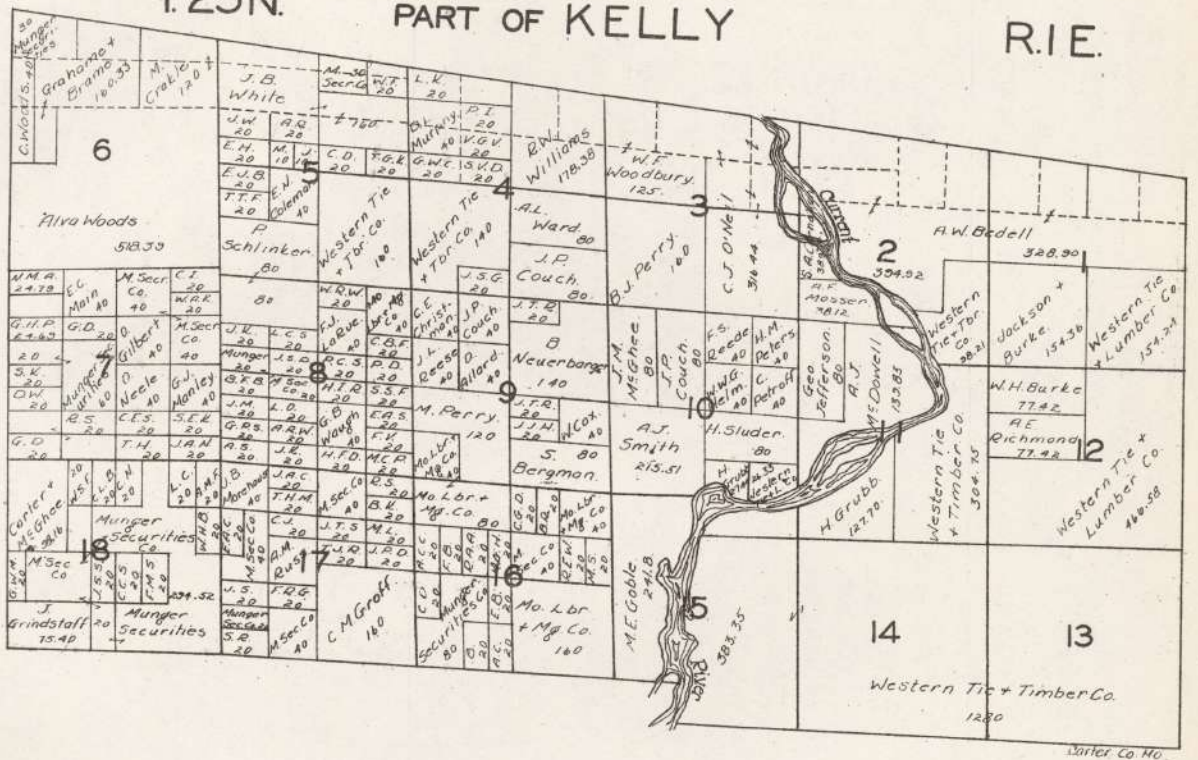
R.2E.



T.25N.

PART OF KELLY

R.1E.

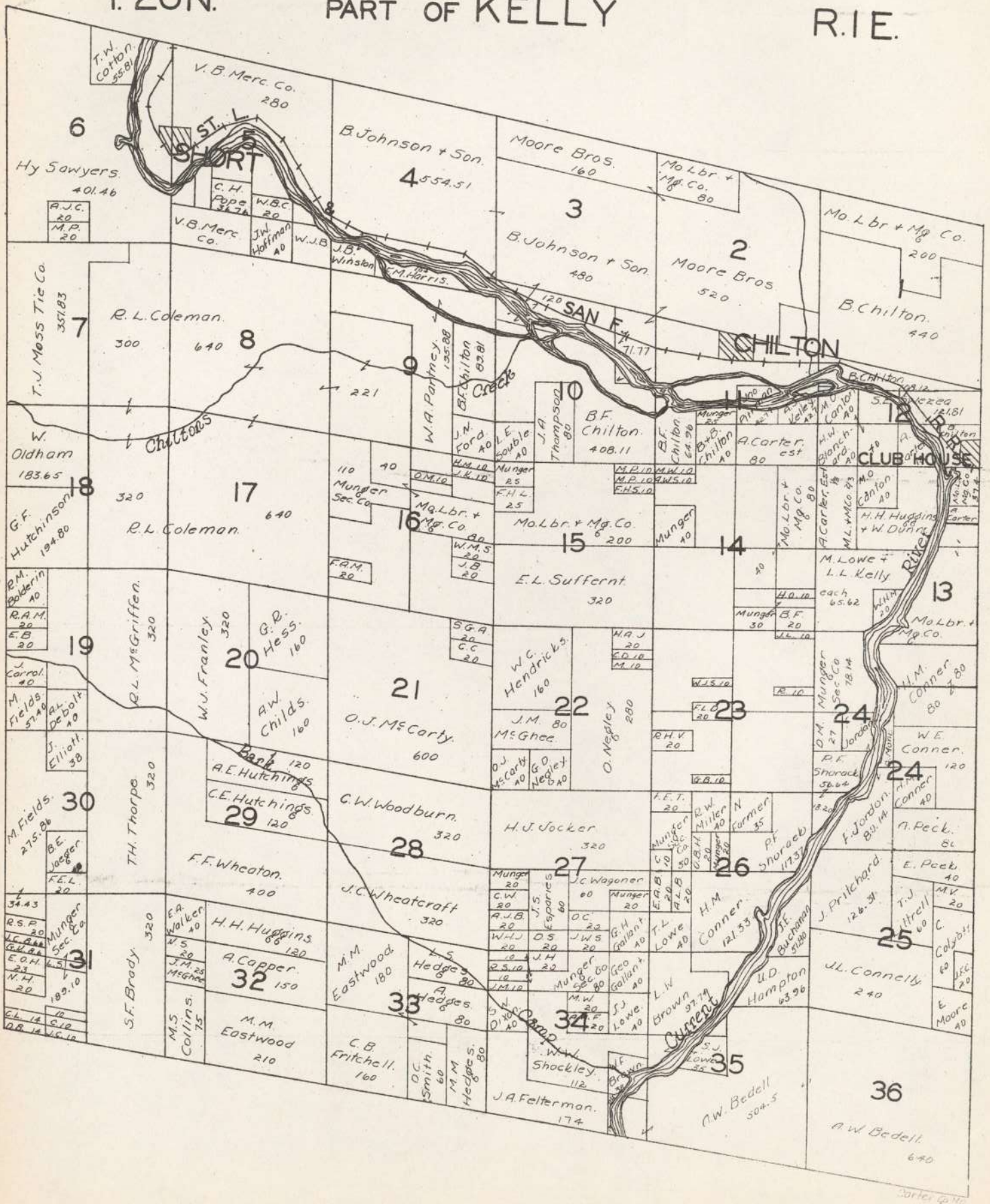


Water Co. No.

T.26N.

PART OF KELLY

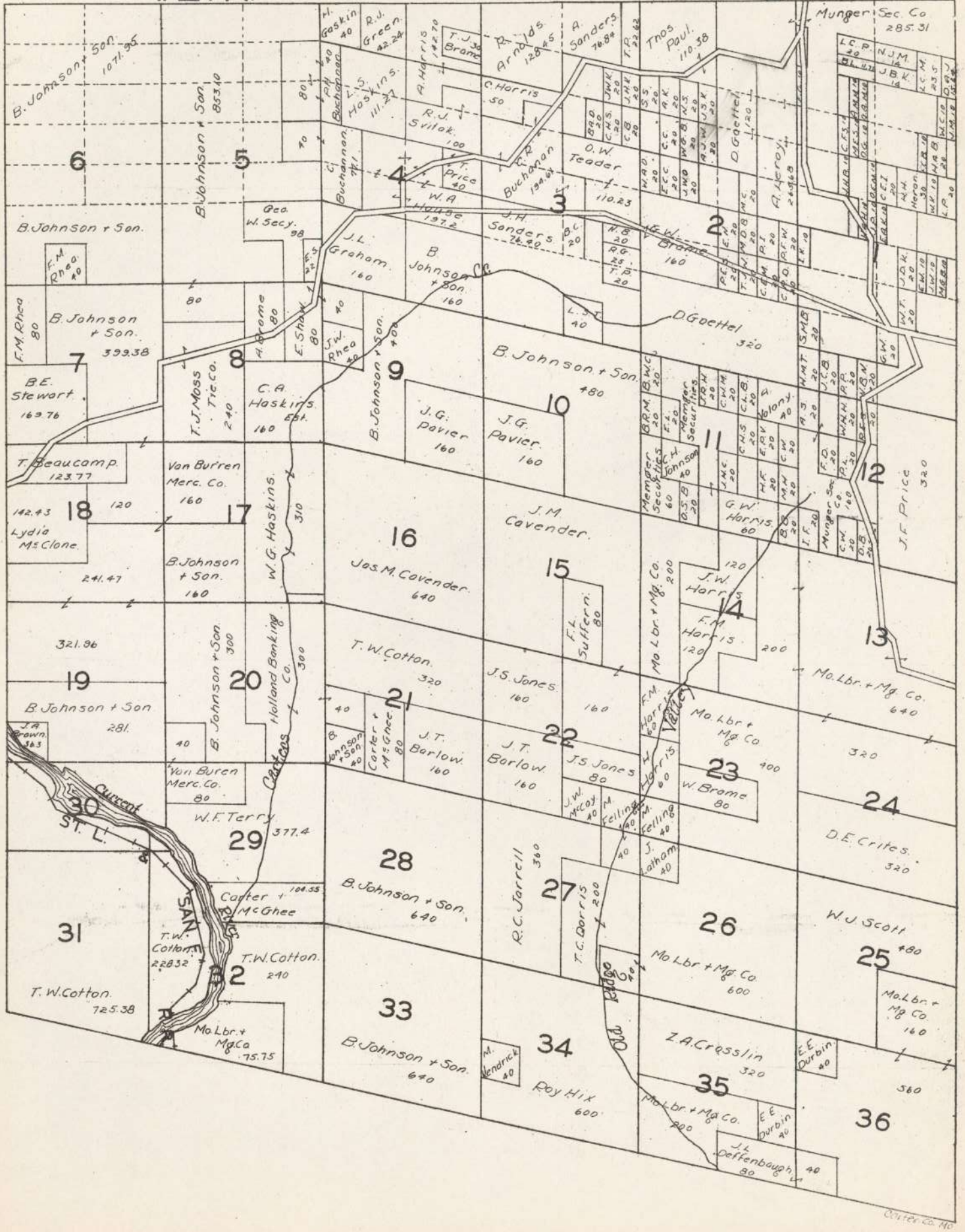
R.I.E.



Corner 4.40

T.27N.

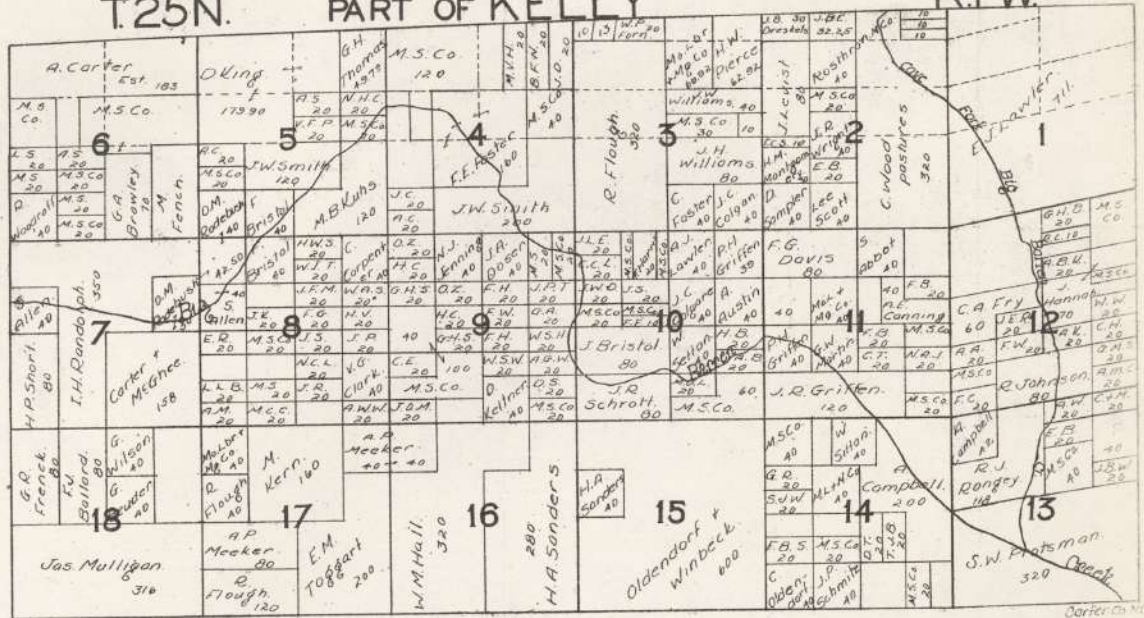
R.1E.



T.25N.

PART OF KELLY

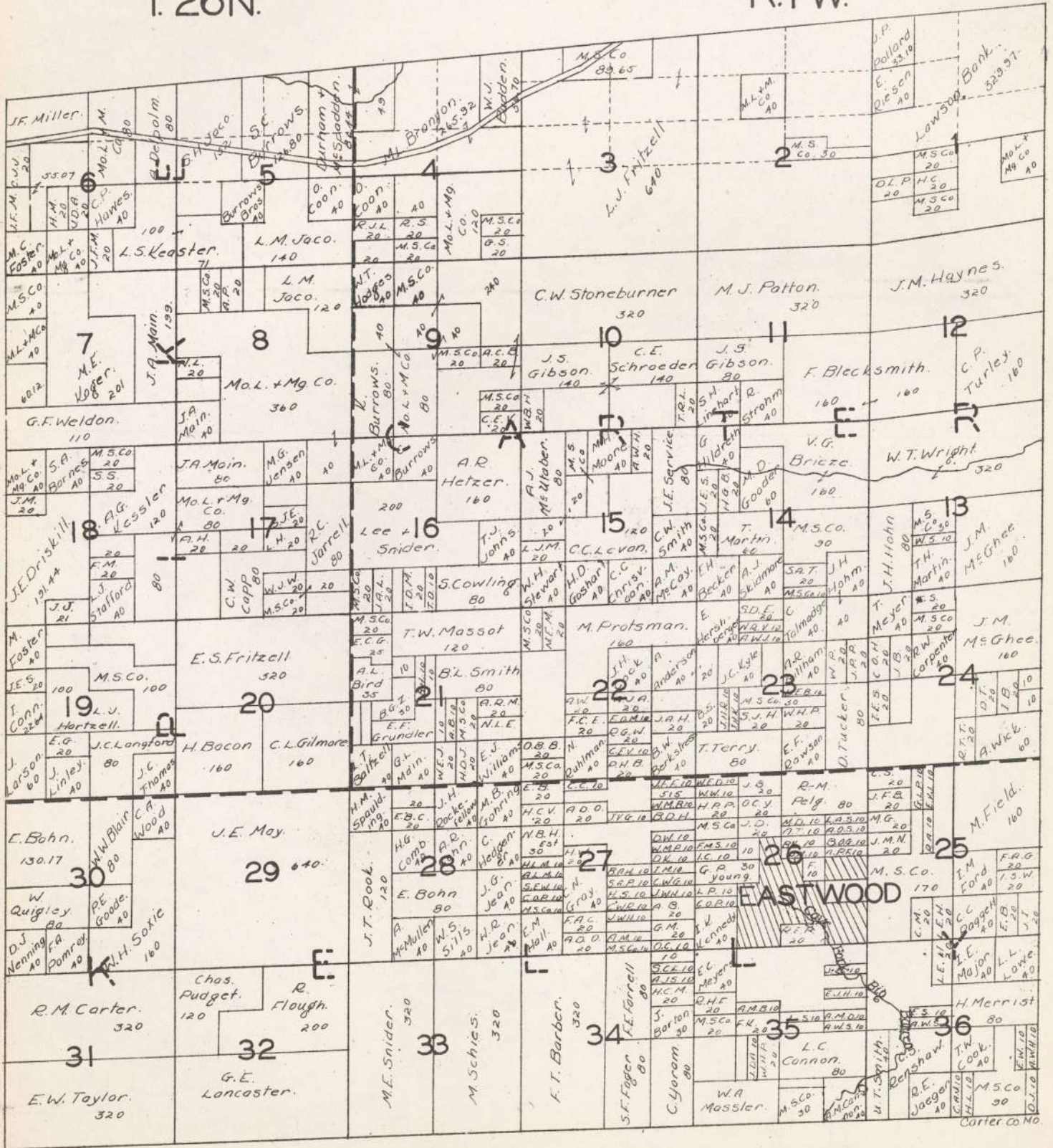
R.1W



Carter Co. N.Y.

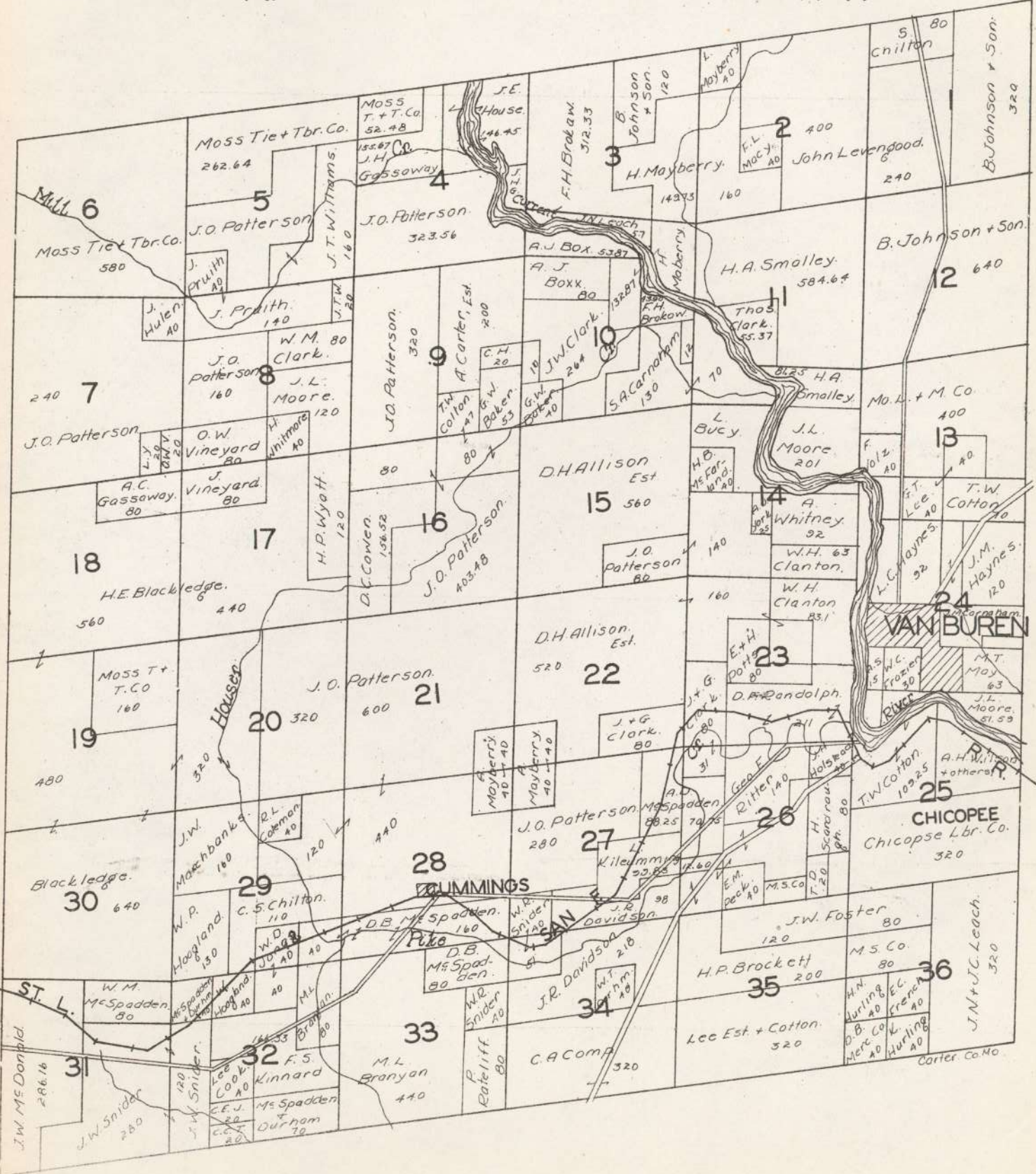
T. 26N.

R. 1W.



T.27N.

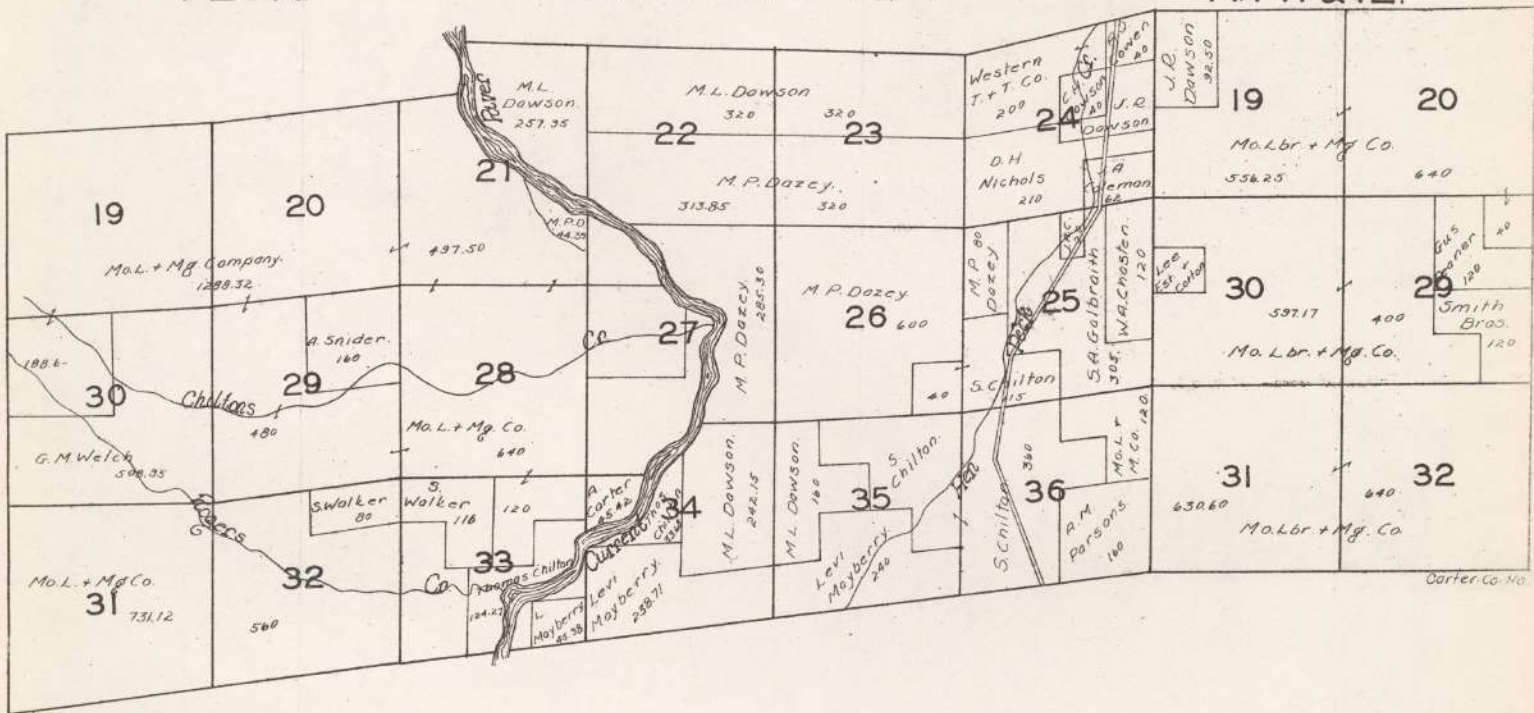
R.1W.



T.28N

PART OF CARTER

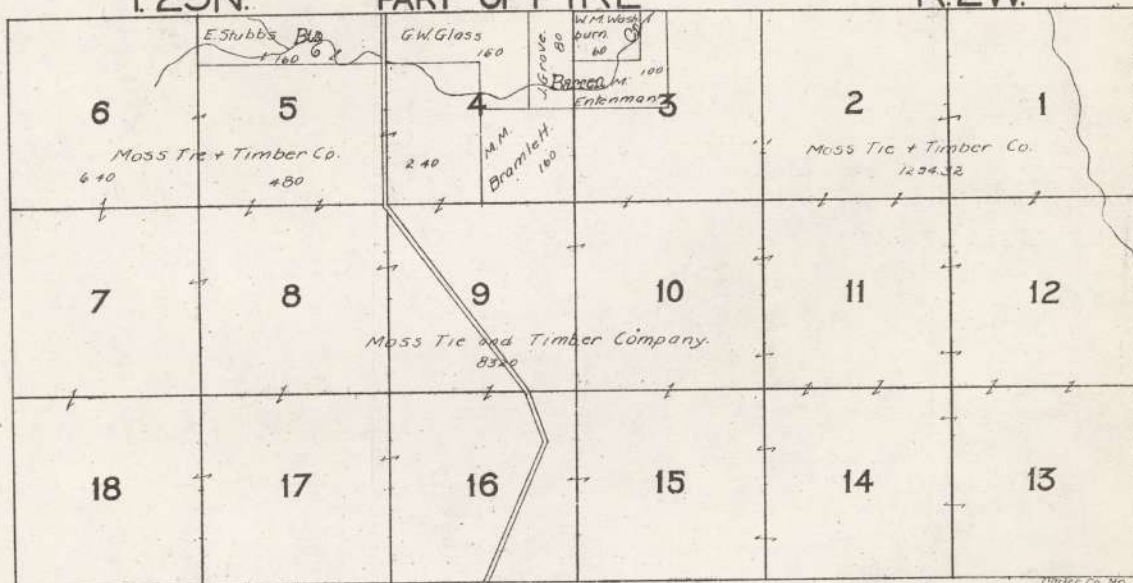
R.1W&1E.



T.25N.

PART OF PIKE

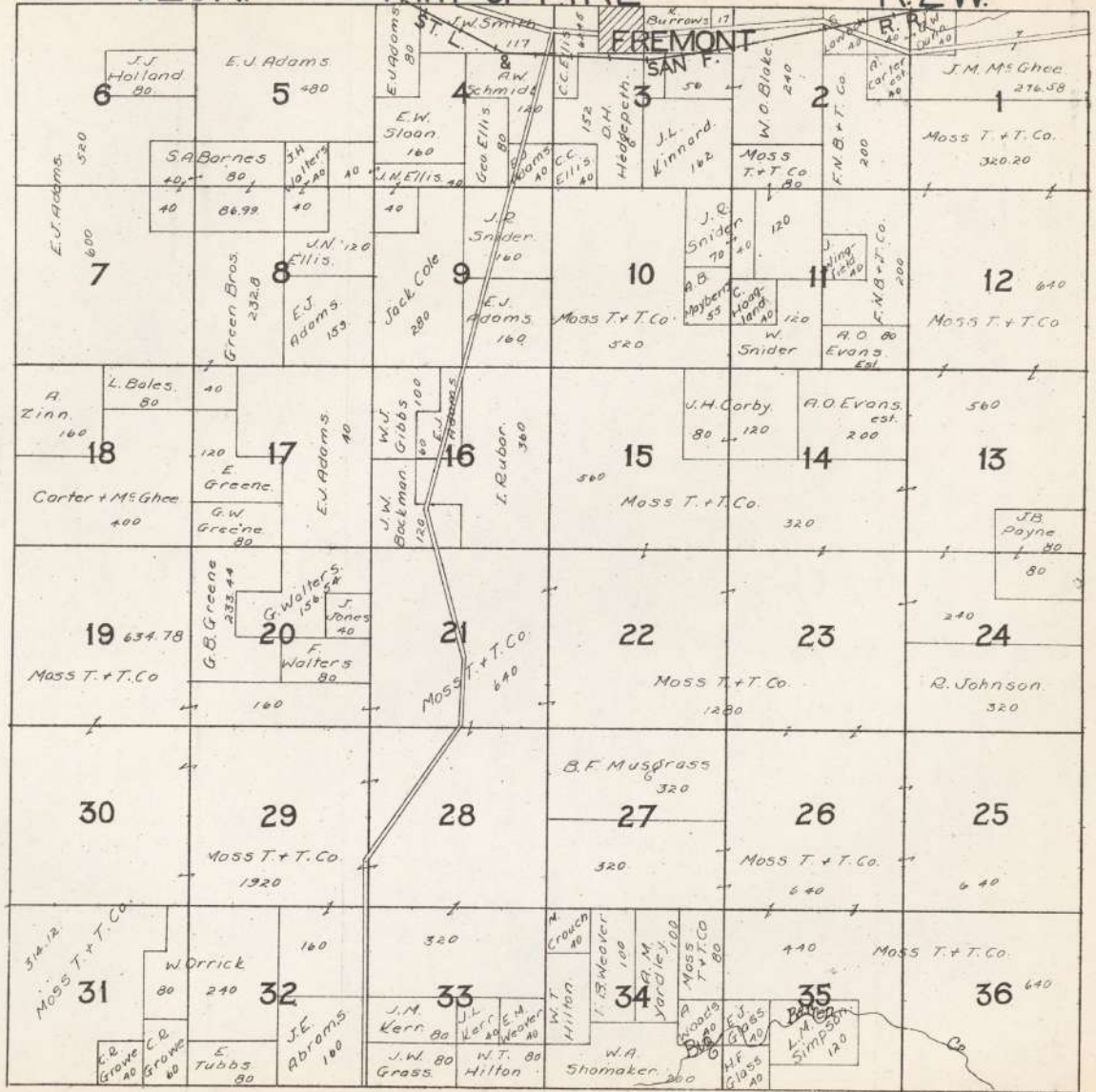
R.2W.



T.26N.

PART OF PIKE

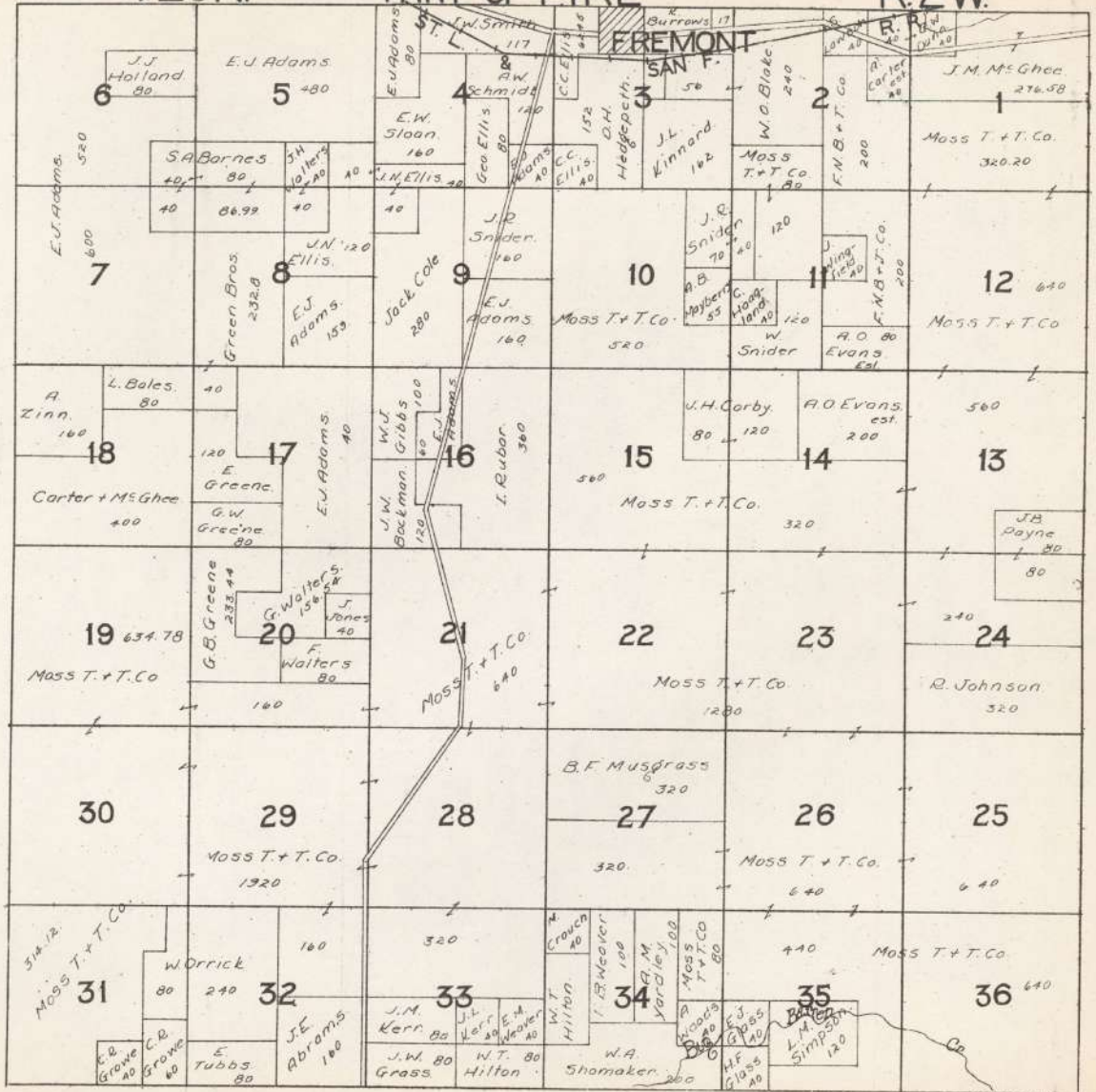
R.2W.



T.26N.

PART OF PIKE

R.2W.



T.28N. PART OF PIKE R.2W.

