

MR
977.889
C245

GEN

CARTER COUNTY CENTENNIAL

1859

October 9, 10, 11

1959

VAN BUREN, MISSOURI, COUNTY SEAT

A Century of Progress In the Missouri Ozarks

IN THE HEART OF THE BIG SPRINGS—CURRENT RIVER COUNTRY

Price 25c

It is a privilege to be living in Carter County for this Centennial Celebration — as we have been in business for several years in Van Buren and have lived in Carter County the greater part of our lives.

Our business is the manufacturing of Tight Barrel Staves, sawed from our native white oak, and also the sawing and finishing of pine lumber.

The employees of the Nichols Stave Co. extend their congratulations on this memorable celebration.

NICHOLS STAVE CO., INC.

FRANCIS E. NICHOLS

MINNIE NICHOLS

ERNIE A. NICHOLS

IRENE NICHOLS

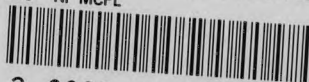
VAN BUREN, MISSOURI

MID-CONTINENT PUBLIC LIBRARY

Genealogy and Local History
317 W. 24 Highway
Independence, MO 64050

GE

977.889 C245 GN
CARTER COUNTY CENTENNIAL, 1859-1959
1959 NI MCPL



3 0000 00129913 4

COMPLIMENTS OF

New Home Building & Supply

**A Complete Line of
Supplies for Every Building Need**

When You Think of Building Think of Us.

CLIFFORD McCLINTOCK, Owner

Van Buren, Mo.

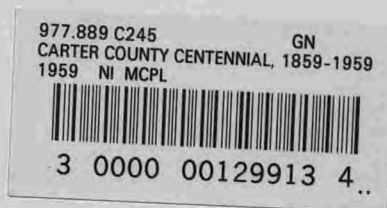
MID-CONTINENT PUBLIC LIBRARY

MID-CONTINENT PUBLIC LIBRARY

Genealogy and Local History
317 W. 24 Highway
Independence, MO 64050

1859

GE



1959

CARTER COUNTY CENTENNIAL

CARTER COUNTY, MISSOURI

Closing Festival Days October 9-10-11, 1959

— Executive Committee —

C. P. Turley, Chairman

Owen D. Johnson, Vice-Chairman

Mary Jane Johnson, Sec'y-Treas.

Roy Gossett

Mrs. Lena Dell

Glenn Kelley

H. H. Lehr

A. V. McKinney

Orran Tucker

COMMITTEE CHAIRMEN

Advertising — Roy Gossett

Pageant — Mrs. Fay Burrows

Parade — David Houston

Publicity — Alan Turley

Queen — Mrs. Dorothy Smith

Street Decorations — Mrs. Jocelyn Levitt

Souvenirs & Novelties — D. B. Newton

Grounds & Concessions — H. C. Daniel

Sisters of the Swish — Mrs. Mabel McSpadden

Brothers of the Brush — Elvin D. Burrows



Centennial Executive Committee — From left, seated—C. P. Turley, Owen Johnson, Mrs. Owen Johnson, Mrs. Lena Dell; Standing from left — Kirt Gott, Haruin Lehr and Glenn Kelley.



JURY BEING SWORN FOR KANGAROO COURT TRIAL

1859 -- 1959

Carter County Centennial

We make grateful acknowledgement to the many persons who have taken part in the Centennial and whose support and work have made the celebration possible.

We dedicate this book to the pioneers— that noble and intrepid class—who left friends, relatives and the scenes of their youth, who climbed the mountains, traversed the plains and crossed the turbulent streams and who braved unknown perils in order to build new homes on the frontier and advance the outposts of our civilization. Tribulations, hardships and suffering were their lot; flawless courage and iron will their shield. As we pause to do them reverence may they sleep more gently still.

We salute the rising and future generations! May they have the vision, the faith and indomitable courage of the pioneers in meeting the problems of their day. May they cherish democracy and preserve the dignity of man. May they forever guard Liberty and the institutions and principles of free men. And, may they write new chapters of achievement and greatness on the pages of the future history of our county, state and nation.

—EXECUTIVE COMMITTEE.

Program

For the Closing

Festival Days

October 9, 10, 11, 1959

VAN BUREN, MISSOURI



FRIDAY

9:00 to 10:00 Entry of Fair Exhibits and display of antiques and pioneer articles at School Cafeteria.

10:00 to 12:00 Concerts by visiting bands on Court House Square.

1:30 p.m. Parade

3:00 to 4:30 Band Concert, introduction of visiting dignitaries; presentation of Queen candidates; awarding of winning float prizes; public speaking.

7:30 Musical review in high school gymnasium.

SATURDAY

- | | |
|-----------|--|
| 9:00 a.m. | Drag race (By the dogs, not the hot-rods) |
| 10:00 | Kiddies Pet Parade, with awarding of prizes. |
| 11:00 | Fiddlers' Contest |
| 1:00 p.m. | Parade of local and visiting bridle clubs |
| 2:00 | Pageant |
| 3:30 | Registration and review of Sisters of the Swish and Brothers of the Brush. |
| 7:00 | Talent show, and crowning of Queen. |

* * *

On the grounds will be a dance floor, and old-fashioned Merry-go-round, and a miniature steam train and track. These will be in operation through the day (except when the parade and speaking is going on) and far into the night. Also other amusements. There will be various stands for the sale of novelties and refreshments. Log cabin with pioneer furniture and furnishings will be open, with an attendant, at all times, as will the display at the School Cafeteria.

SUNDAY

Services in all of the churches in the morning with union meeting and mass singing on Court House Square commencing at 1:00 o'clock.

* * *

The Wranglers Club of Poplar Bluff will have a Rodeo in City Park at Van Buren, under sponsorship of Centennial Committee. Saturday evening and Sunday afternoon, September 5th and 6th.

HISTORY

Carter County became a political unit of the state on March 10, 1859. Its first officers, members of the county court appointed by the governor were E. W. Crittenden, Presiding Judge, and James Brown and Henry Hardin, Associate Judges.

Of course, the area with its rolling, grass-covered hills abounding with game and its clear streams teeming with fish, was a happy hunting ground for Indian tribes. Early French explorers and trappers visited the region, to be followed by other hunters and adventurers. Permanent settlers did not arrive until the early part of the 19th century, and, from the evidence available, Isaac E. Kelley was the first of these. Soon the Carters, Sniders, Chiltons, Kinnards, and others came.

The first commerce or trade was the shipping of furs, venison and wild pigeons. With the coming of the railroads in 1887, the timber industry became the leading industry. The largest operator was the Missouri Lumber & Mining Co., which for many years was one of the leading producers of pine lumber in the nation. The lush and abundant grass and the bountiful masts, with the river and valley farms, provided the basis for a quite extensive and profitable livestock industry. Sporadic attempts at mining iron ore have been made.

In 1917, the Mid-Continent Iron Company constructed a smelter, retorts, chemical plant, etc., at Midco. This continued in operation until April, 1921. When in full blast this operation was a gigantic, feverish affair and was about the biggest single industrial project ever had in the Ozark region.

In 1924, the world famous Big Spring, with some 5000 acres of rugged land, was made a State Park. The Park and Current River are great attractions, and catering to the many tourists, fishermen, and hunters coming here annually has become one of the leading businesses in the county.

In 1937, all of the railroads, save that part running west from Van Buren, were taken up. This was a result of the decline in timber and livestock production, coupled with the coming of modern highways and the consequent transportation of goods and passengers thereon. In 1933, the Federal Forest was established and many acres in Carter County were purchased and placed under federal control. This marked the beginning of a movement to develop, restore and conserve the timber resources of this region.

With its fertile river and valley farms; with its enduring appeal to tourists, fishermen and hunters; and with a wise utilization of its timber and water resources the people of Carter County may with assurance look forward to a century of happy and prosperous times.

BE SOCIABLE



Have a Pepsi!

Queen Candidates



SHARON KINDER

Sponsored by Van Buren Rotary Club



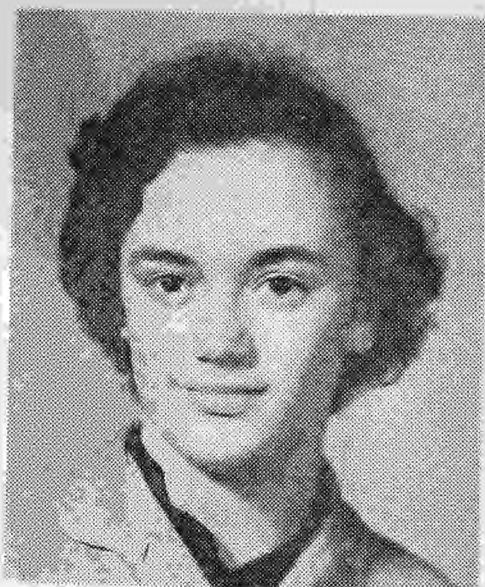
BERTSELL BOWMAN

Sponsored by R-1 School Dist. PTA



ERNA LEA PERRY

Sponsored by Van Buren American
Legion and Auxiliary



MARGARET KEARBHEY

Sponsored by Sophomore Class,
Ellsinore High School

Queen Candidates



CHARLOTTE BLACK

Sponsored by Van Buren Junior and
Senior Queen Ann Clubs



SHARON COLE

Sponsored by Freshman Class,
Ellsinore High School



KAREN CRASS

Sponsored by Big Spring Saddle Club

JEAN KISER

(Not Pictured)

Sponsored by Grandin, Mo.

Queen Candidates



SUE NUNLEY

Sponsored by Missouri Pallet
& Lumber Co.



BETTY ROBERTSON

Sponsored by Senior Class,
Ellsinore High School



PAMELA SMITH

Sponsored by Carter County Telephone Co.



ROSANNE HOUSTON

Sponsored by the Jolly Cone

Queen Candidates



MARY PENNINGTON

Sponsored by Fremont American
Legion and Auxiliary



BEVERLY FARRIS

Sponsored by Junior Class,
Ellsinore High School



GAYE RUTH PENDER

Sponsored by Van Buren Garden Club



ULENA FOWLER

Sponsored by Beamer Handle Company

COMPLIMENTS OF

SMALLEY'S
MOTEL

VAN BUREN'S LARGEST

Van Buren, Mo.

COMPLIMENTS OF

The Art Studio

215 S. Broadway
Poplar Bluff, Mo.

ART SUPPLIES
PICTURE FRAMES

We were happy to supply the oils
for the Pageant Paintings

COMPLIMENTS OF

SOUTHSIDE MARKET

GLENN McDOWELL, Owner

Van Buren, Mo.

COMPLIMENTS OF

O'NEAL CLOTHING
COMPANY

Poplar Bluff, Mo.

COMPLIMENTS OF

W. A. BOHN'S STORE

Highway 60 West of Ellsinore, Mo.

COMPLIMENTS OF

BARNES GROCERY CO.

Poplar Bluff, Mo.

COMPLIMENTS OF

WALTER SMITH
BARBER SHOP

Van Buren, Mo.

COMPLIMENTS OF

SUNSHINE CLUB

Van Buren, Mo.

COMPLIMENTS OF

McSpadden's

Standard Station

HISTORY OF CARTER COUNTY

A 68-page mimeographed book for \$1

Order from the author

EUNICE PENNINGTON

Fremont, Mo.

**STANDARD OIL
PRODUCTS**

**Evinrude Motors
Zip Chain Saws**

ROY McSPADDEN, Owner

Van Buren, Mo.

COMPLIMENTS OF



IT'S HOURS FRESHER

TOELLNER BAKING CO.

POPLAR BLUFF, MO.

COMPLIMENTS OF

COMPLIMENTS OF

Willard's
Sundry Store

Mr. and Mrs. Melvin Willard, Owners

Van Buren, Mo.

Van Buren
Mercantile

LEE CLOTHES, MAYTAG APPL.,
GROCERIES, HARDWARE

CLYDE MANN, Owner

Van Buren, Mo.

COMPLIMENTS OF

**MFA Packing
Co.**

Springfield, Mo.

COMPLIMENTS OF

**MIDCO
Mercantile**

1920 — 1959

Fremont, Mo.

COMPLIMENTS OF

DRIVE INN CAFE

Van Buren, Mo.

COMPLIMENTS OF

Mrs. Charles (Omah) Sang

Clerk of Circuit Court and Ex-Officio
Recorder of Deeds, Carter County

Mrs. Roy McSpadden

Deputy

MEET YOUR FRIENDS AT

Ritz Theatre
&

**Winona
Drive-In**

**CARTER, JO DALE &
WAYNE SMALLEY**

SISTERS OF THE SWISH



Seated, from left: Mrs. Herbert Gunter of Hunter; Mrs. Robert Gunter of Grandin; Leslie McSpadden of Van Buren and Mrs. Roy Gossett of Van Buren. Standing, from left, Mrs. Alan Turley and Mrs. Coleman McSpadden, Van Buren; Mrs. Murphy Roam and Mrs. John G. Johnson of Ellsinore and Mrs. Elvin Burrows of Fremont.

COMPLIMENTS OF

UREGAS

Standley Gas & Electric

PHONE FA 3-4320

Van Buren, Mo.

COMPLIMENTS OF

PHILLIPS 66 GAS & OIL

VAN BUREN OIL CO.

Quality Products - Friendly Service

Gas, Oil, Fuel Oil, Diesel Fuel. Complete Line Lee & Phillips

66 Tires, Tubes, Batteries and Accessories

WALTER, CRAFTON, Owner

Van Buren, Mo.

COMPLIMENTS OF

ROLLA JOHNSON & SON

LUMBER, BUILDING, CONTRACTING

QUALITY, SERVICE, INTEGRITY

Fremont, Mo.

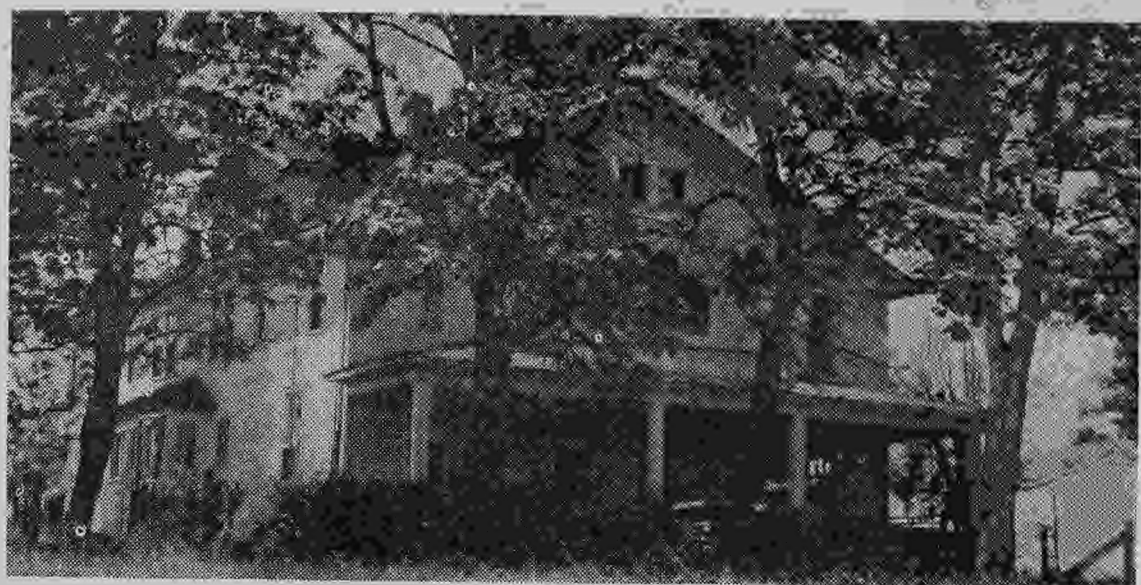
COMPLIMENTS OF

THE CURRENT LOCAL

Established in 1884 by Clay Moseley

ALAN and MARJORIE TURLEY, Publishers

Van Buren, Mo.



Old Kelley Hotel at Hunter, Mo.



C. P. TURLEY ELVIN BURROWS OWEN JOHNSON LUIN SMITH JONT WOOD



Carter County Officials—Front row seat left to right: Dewey Brooks, Western Dist. Judge; Rubert Howell, Presiding Judge; Shelby Million, Eastern Dist. Judge; Clarence Coleman, County Clerk; Mrs. Omah Sang, Circuit Clerk and Recorder. Standing—left to right: C. P. Turley, Magistrate Judge; Roy Parr, Assessor; J. S. Allen, County Supt. of Schools; Glenn Kelley, Collector; John Hunter, Surveyor; Roy Wilson, Treasurer; Coleman McSpadden, Coroner. Not pictured are Sheriff S. E. Dell and Prosecuting Attorney James N. Lorenz.

COMPLIMENTS OF

Rucinski

Maternity Hospital

FRANK J. RUCINSKI, D.O.

Physician-Surgeon

Van Buren, Mo.

COMPLIMENTS OF

Crass

Motor Co.

F O R D

Sales and Service

FORD FARM EQUIPMENT

Van Buren, Mo.

COMPLIMENTS OF

Hewlett Wholesale Meats

FINEST OF MEATS AND FROZEN FOODS

Telephone 5266 and 5147

POPLAR BLUFF, MISSOURI

COMPLIMENTS OF
Yates Service Station

SINCLAIR PRODUCTS

RAY YATES, Prop.

Ellsinore, Mo.

COMPLIMENTS OF

Hardy Lehr

INSURANCE AGENCY

Ellsinore, Mo.

COMPLIMENTS OF

TOM'S

Peanuts & Candies

FARRAR DISTRIBUTING CO.

Farmington, Mo.

COMPLIMENTS OF

POTTS' GROCERY

Groceries, Meats, Notions

SOUTH VAN BUREN - HIGHWAY 103

JOE POTTS, Owner

Van Buren, Mo.



CURRENT RIVER SCENES



Crowd in Courtyard at Van Buren for Centennial Opening Day Ceremonies March 10, 1959

COMPLIMENTS OF

21 DRIVE-IN THEATRE

ENTERTAINMENT

FOR THE

WHOLE

FAMILY

HIGHWAYS 21-34

DAVIS and LARKIN, Owners

**NOTHING
IN THE EAR**



HEARING AIDS & SUPPLIES

ZENITH HEARING AIDS

Enjoyed by more people than any other aid in the world. Highest quality, sensibly priced transistor models include eyeglass type and and a tiny aid worn entirely at the ear. By makers of Zenith TV, radios. 10-DAY MONEY BACK GUARANTEE.

FULLER'S JEWELRY

105 S. MAIN ST., POPLAR BLUFF, MO.

Phone SU 5-3521

COMPLIMENTS OF

GUNTER'S STORE

Hunter, Mo.

COMPLIMENTS OF

BILL PARR

Your County Assessor

COMPLIMENTS OF

ROBERTSON'S STATION

Ellsinore, Mo.

COMPLIMENTS OF

SAV-A-STOP

Poplar Bluff, Mo.

Kobert Company

Specialties for
Centennial Celebrations
Advertising Specialties
Calendars
Business Cards for
All Kinds of Businesses
Doniphan, Mo.

COMPLIMENTS OF YOUR

Sinclair Dealer

GAS, OIL, TIRES

LUIN ROY

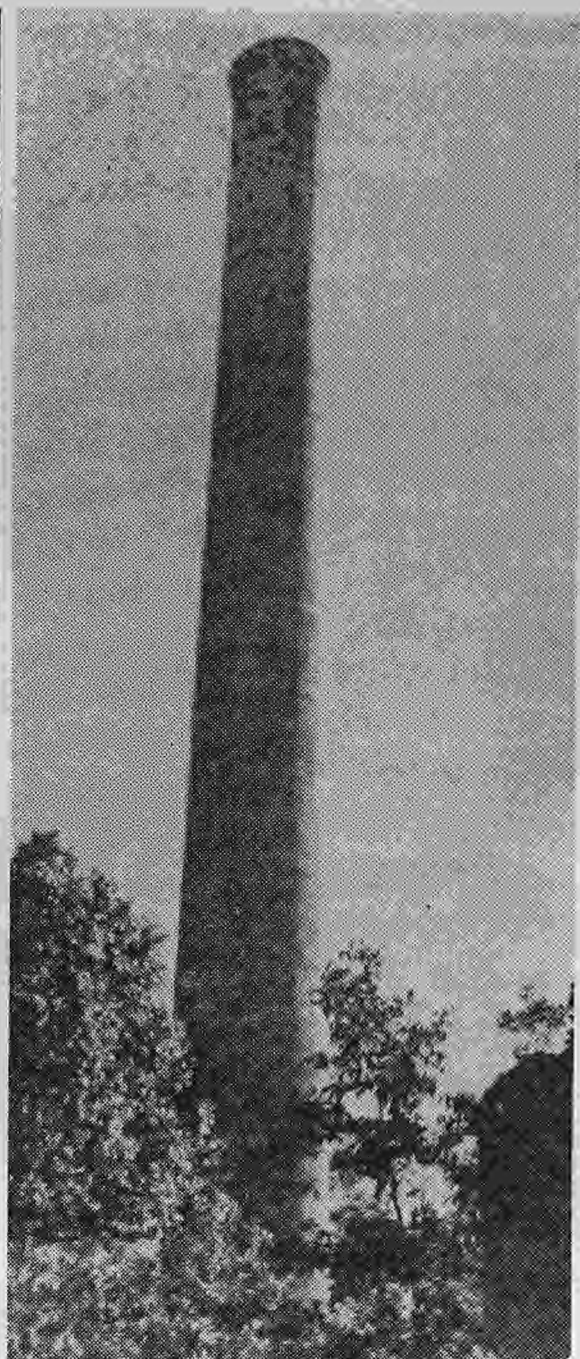


Perhaps no other area in Carter County has been the scene of as many and varied activities as the Midco region. In the 90's a steam mill was installed there; at the turn of the century the Missouri Lumber & Mining Co. had log yard, camp and store there; in 1905 Peck Ranch of 22,000 acres was established with headquarters at the spring; and, in 1916 Thompson brothers, Sam and Andy, began promoting idea of smelter at the spring. They interested the Larabee brothers, wealthy millers of Kansas, who in turn induced the U. S. Gov't to finance the project as part of war production. In fall of 1917 construction of plant commenced in big way. Plant was in full operation from latter part of 1918 to April 1921. Then receivers and rust held sway until 1926 when dismantling and wrecking of plant was started.

Only smoke stack and spring remain as reminder of days of former greatness.

COMPLIMENTS OF
VAN BUREN
ABSTRACT COMPANY

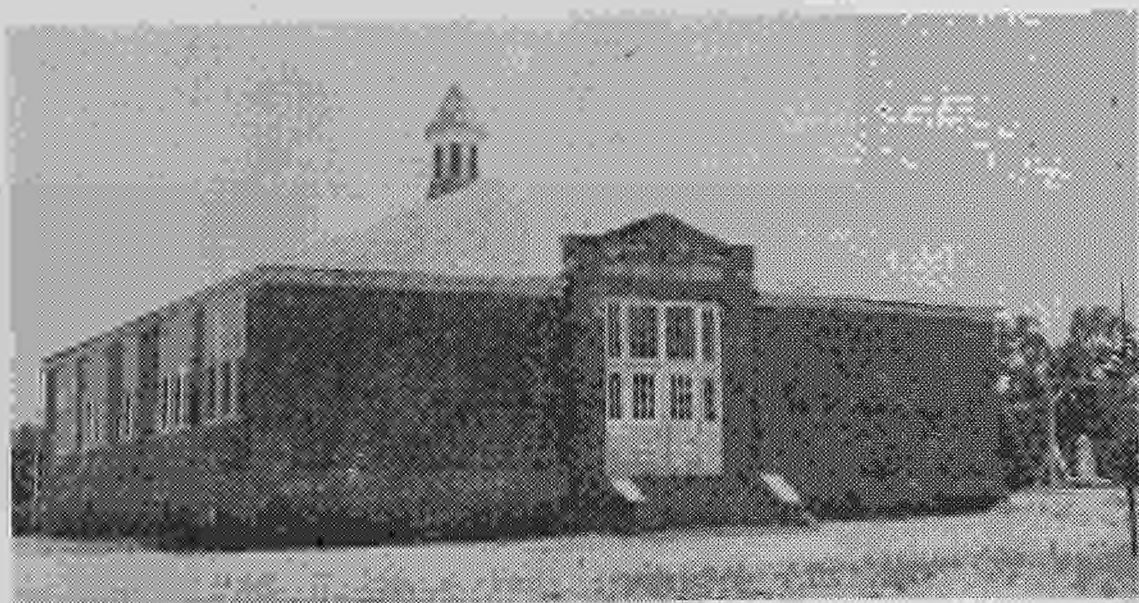
C. P. TURLEY, Owner



master
Ah, mighty ~~monster~~ of this silent solitude,
How long canst thou maintain thy barren
fortitude?

Standing there amidst cinder, slag and
spreading thistle

Dost thou long for evening whistle?
O, monster of mortar, clay, and steel,
Tell me, what dost thou feel?



School Building at Hunter, Mo.



Scene on farm owned by K. D. Hedgepeth near Fremont, Mo.



School Building at Ellsinore, Mo.



Grandin Street Scene



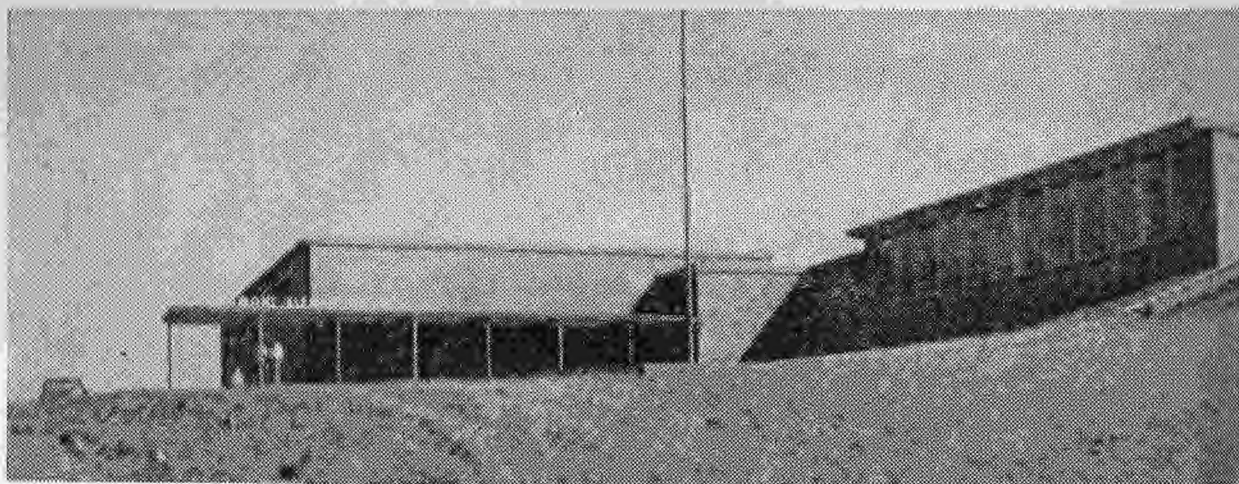
School Building at Grandin, Mo.

From This



This is all that remained of Fremont School Building after tornado May 21, 1957. Town of Fremont also was severely damaged and six lives were lost.

To This at Fremont



New Fremont Elementary School Building which was completed in summer of 1959. The structure cost \$190,000.

COMPLIMENTS OF

CARTER COUNTY

TELEPHONE COMPANY

LUIN SMITH, Owner

GRASSHAM BROTHERS

MOTOR SALES

CHEVROLET CARS, TRUCKS

McCULLOCH CHAIN SAWS

CASE FARM EQUIPMENT

PHILLIPS GAS & OIL

24-HOUR WRECKER SERVICE

FA 3-4524

VAN BUREN, MO.



For a PARTY or a PAUSE



... enjoy the cold crisp taste, the cheerful lift of Coca-Cola. STOCK UP WITH CARTONS OF KING SIZE COKE TODAY.



SIGN OF GOOD TASTE

Bottled under authority of The Coca-Cola Company by

Salem Coca-Cola Bottling Co.

SALEM, MISSOURI

COMPLIMENTS OF

RAY-GAS

Distributing Co.

ELLINGTON, MO.

COMPLIMENTS OF

JOLLY CONE

Eating for Pleasure

Is Life's Greatest Treasure

You All Come

DAVID HOUSTON, Owner

Van Buren, Mo.

COMPLIMENTS OF

VAN DYKE'S STORE

THE FRIENDLY STORE

You Pay Your Bills and I Can Pay Mine

GENERAL MERCHANDISE

Phone DA 2-2511

ELLSINORE, MO.

COMPLIMENTS OF

WALLIS-CASE
DAIRY

POPLAR BLUFF, MO.

COMPLIMENTS OF

HILAND
DAIRY

WEST PLAINS, MO.

FOLLOW THE CROWDS TO

WARD'S

SUPER MARKET

Finer Foods at

Lower Prices

Van Buren, Mo.

COMPLIMENTS OF

McSpadden
Funeral Home

PHONE FA 3-4222

Van Buren, Mo.

COMPLIMENTS OF

PEWITT

FURNITURE & UNDERTAKING

Phone FA 3-4226

Van Buren, Mo.

COMPLIMENTS OF

Hawthorne
Court

Missouri's Finest

Phone FA 3-4331

Van Buren, Mo.

COMPLIMENTS OF

BIG SPRING CAFE

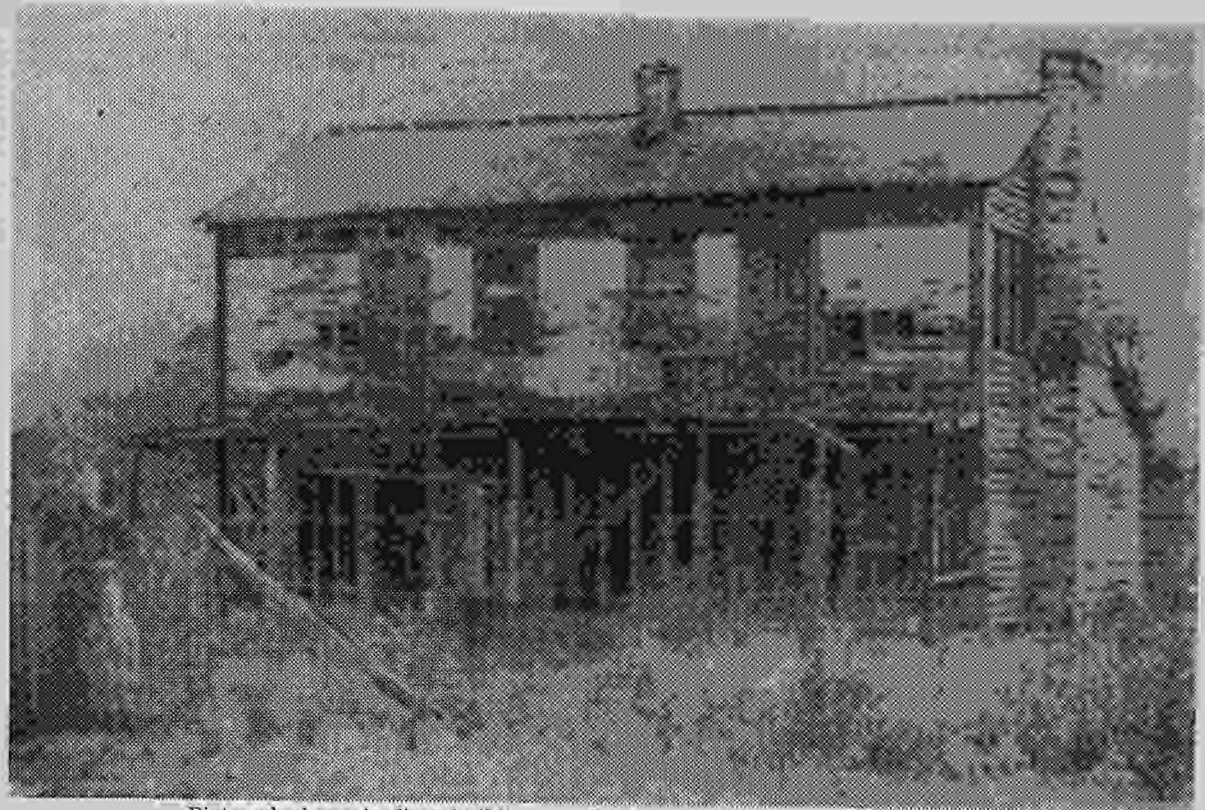
Kirt & Agnes Gott

WE DO OUR BEST TO SERVE FOOD

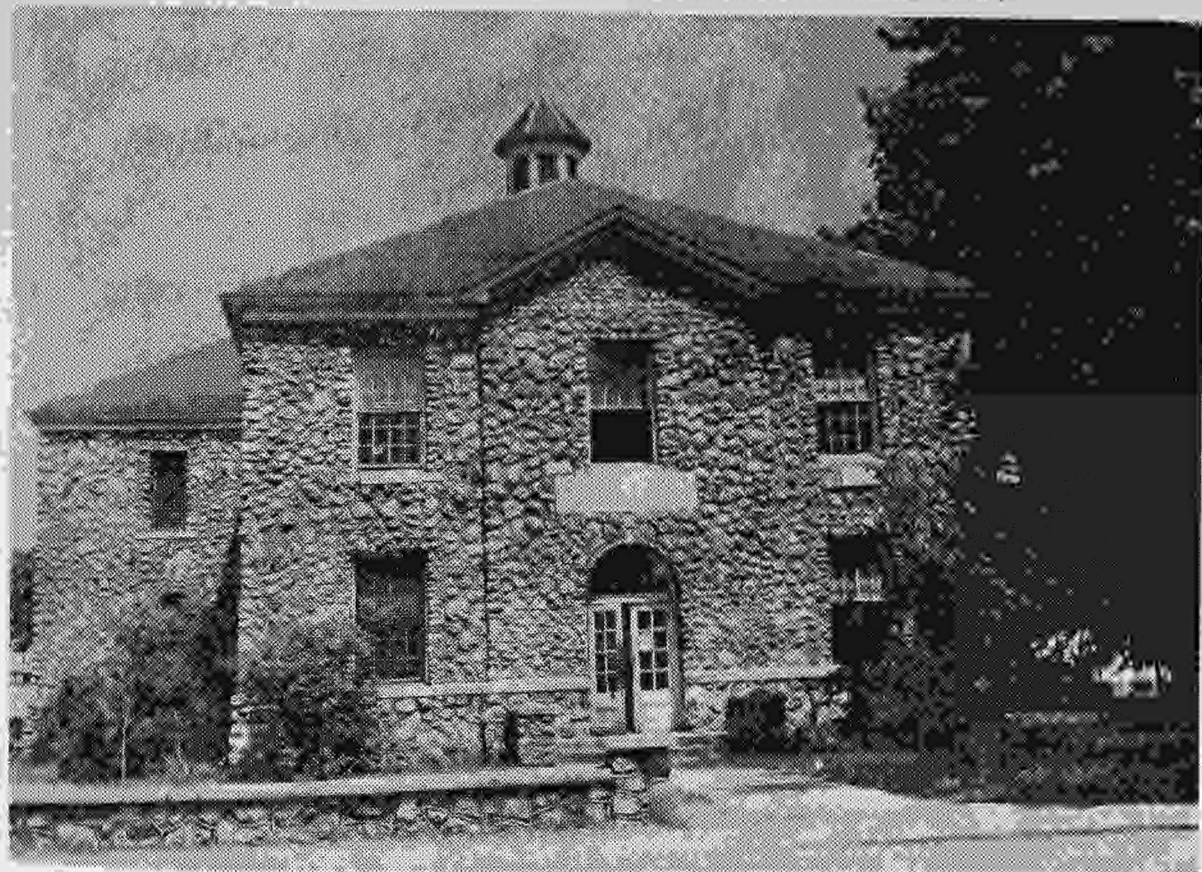
THE WAY YOU LIKE IT.

HIGHWAY 60

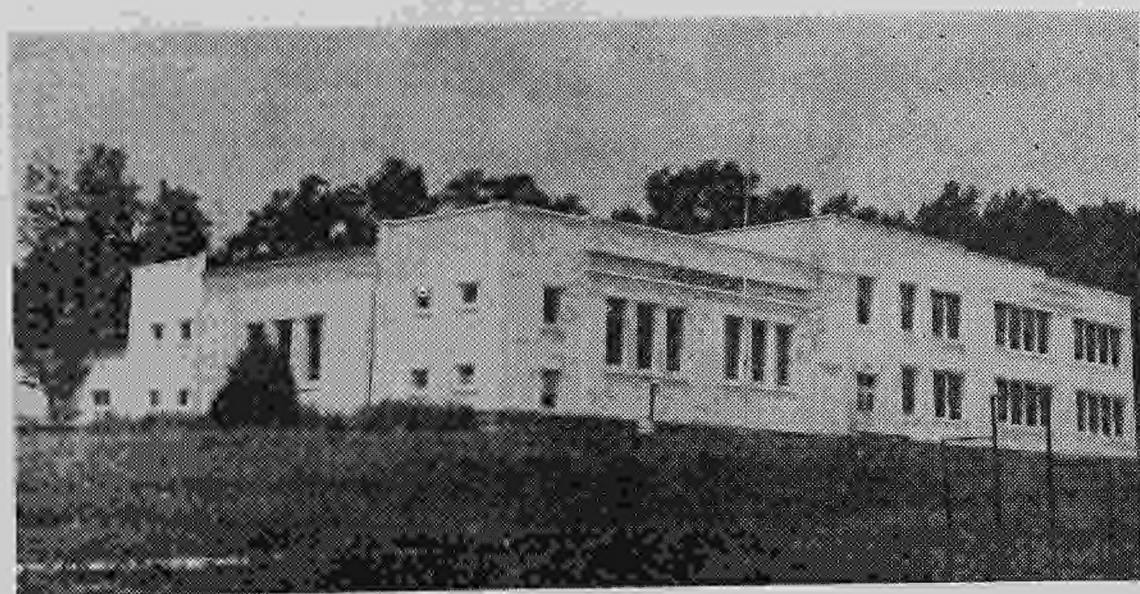
Van Buren, Mo.



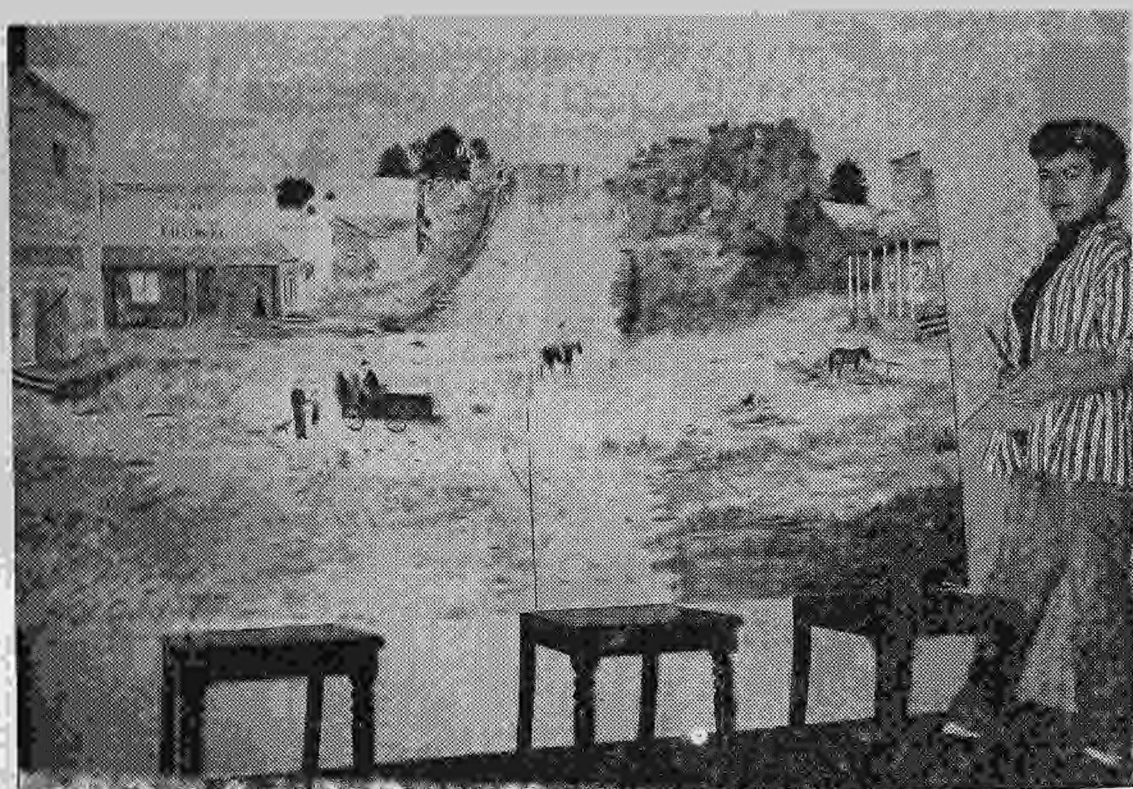
Pictured above is first building used as a courthouse for Carter County.



Present day stone courthouse located at Van Buren, county seat of Carter County, Missouri.



School Building at Van Buren, Mo.



Mrs. Dixie Pender beside her Pageant Painting of the early day Village of Ellsinore, Mo.

COMPLIMENTS OF

**GAMBLES
STORE**

R. W. ADAMS, Prop.

Van Buren, Mo.

COMPLIMENTS OF

KERN'S PRINTING CO.

Doniphan, Mo.

COMPLIMENTS OF

FAMILY SHOE STORE

Poplar Bluff, Mo.

COMPLIMENTS OF

CLIFF DRUG CO.

Your Rexall Dealer

MOSE NELSON, Proprietor

Van Buren, Mo.

COMPLIMENTS OF

RED'S SUPER SERVICE

SINCLAIR PRODUCTS

ORVILLE WILLIAMS, Prop.

Van Buren, Mo.

COMPLIMENTS OF

FOSTER'S STATION

BETTER GAS FOR LESS

GAS, OIL, TIRES & ACCESSORIES

DRIVE CAREFULLY

Highway 60 - North

Van Buren, Mo.



Crowd in Carter County Courtyard March 10, 1959 for beginning of County Centennial observance. Note horses and riders from Big Spring Saddle Club in upper part of picture.

COMPLIMENTS OF

Rose Cliff Lodge

AIR CONDITIONED

STEAM HEAT

T.V. LOUNGE

Family Style Meals

Bob and Oma Carnahan

Van Buren, Mo.

COMPLIMENTS OF

GLENN & PATTY KELLEY

Van Buren, Mo.

COMPLIMENTS OF

ROY WILSON

Van Buren, Mo.

COMPLIMENTS OF

ROSS WELDING

COMPANY

Poplar Bluff, Mo.

COMPLIMENTS OF

CARL & AGNES BURROWS

Van Buren, Mo.

COMPLIMENTS OF

HALFERTY IMPLEMENT CO.

Oliver Farm Equipment

Teamed-Power

Finest in Farm Machinery

Ph. SU 5-8883 Poplar Bluff, Mo.

COMPLIMENTS OF

CLARENCE & DAISY COLEMAN

Van Buren, Mo.

COMPLIMENTS OF

SHERIFF and MRS. S. E. DELL

COMPLIMENTS OF

EARL KEARBEY

COMPLIMENTS OF

A FRIEND

COMPLIMENTS OF

CITY PARK SERVICE

STATION and CAFE

Mr. and Mrs. Jewel Marchbank

Van Buren, Mo.

COMPLIMENTS OF

TERRY'S SHOE
and
VARIETY STORE

Van Buren, Mo.

COMPLIMENTS OF

BUNYARD'S
Clothing Store

Van Buren, Mo.

COMPLIMENTS OF

Murphy
Dairy

SEALTEST PRODUCTS

ARCADIA, MO.

COMPLIMENTS OF

Anderson's

MUSEUM & GIFT SHOP

Top of Hill—Highway 103

Mr. and Mrs. Leo Anderson, Owners

Van Buren, Mo.

COMPLIMENTS OF

Malone &
Hyde

SOUTH'S LARGEST
FOOD WHOLESALERS

Your JACK SPRAT Dealer

Sikeston, Mo. Memphis, Tenn.

Tupelo, Miss.

COMPLIMENTS OF

**Tyke & Myrt
Burrows' Store**

FREMONT, MO.

COMPLIMENTS OF

BROOKS
Potato Chip Co.

SPRINGFIELD, MO.

COMPLIMENTS OF

JOHN and GLADYS CHILTON

COMPLIMENTS OF

MFA
FARMERS EXCHANGE

Thomas Clayton, Mgr.

COMPLIMENTS OF

G I N T E R ' S

SHOE SHOP

Van Buren, Mo.

Van Buren, Mo.

COMPLIMENTS OF

SMITH'S

HOME FURNISHINGS

WILBUR SMITH, Prop.

Doniphan, Mo.

COMPLIMENTS OF

W. O. PRICE

MERC. CO.

We Handle a Complete Line

For Farm and Home

W. O. PRICE, Prop.

Van Buren, Mo.

COMPLIMENTS OF

JIM ALLEN

United Farm Agency

Van Buren, Mo.

COMPLIMENTS OF

**Current River Cafe
& Martins' Service Station**

FINE VARIETY OF FOOD

PHILLIPS 66 GAS, OIL, TIRES

C. O. & I. G. MARTIN, Owners

Van Buren, Mo.

COMPLIMENTS OF

C. E. CARNAHAN

STORE

Ellsinore, Mo.

COMPLIMENTS OF

EARL KINDER

Your Conservation Agent

Van Buren, Mo.

COMPLIMENTS OF

COUNTRY HOUSE CAFE

Fine Foods, Gas, Oil

Highway 60

Ellsinore, Mo.

COMPLIMENTS OF

THE NEIGHBORS' CLUB

Van Buren, Mo.

Royal Crown
Cola

Nehi Soda

Bottled by Royal Crown

Bottling Co.

POPLAR BLUFF, MO.

McKINNEY'S

Insurance Agency

ART McKINNEY, Owner

GRANDIN, MO.



BANK OF GRANDIN

Since 1913

The Old Reliable Home Bank

PASS BOOK SAVINGS 2% PER ANNUM

Time & Savings Certificates 2½% Per Annum

Member FDIC

GRANDIN, MISSOURI

COMPLIMENTS OF

**Missouri Pallet
& Lumber
Co.**

MORTON LEVITT, Owner

Van Buren, Mo.

COMPLIMENTS OF

JIM NEWTON'S

BARBER SHOP

Van Buren, Mo.

COMPLIMENTS OF

**CURRENT RIVER ZEPHYR
STATION**

OPEN 24 HOURS

J. D. McDANIEL, Owner

COMPLIMENTS OF

**BEAMER
Handle Co.**

Van Buren, Mo.

On Carter County's

100th Birthday

MFA LIFE

STARTS ITS FIRST YEAR

Save with either of MFA Life's
CHARTER POLICIES

MFA Life INDIVIDUAL Charter Policy

MFA Life FAMILY Charter Policy

See Your MFA Insurance Agent

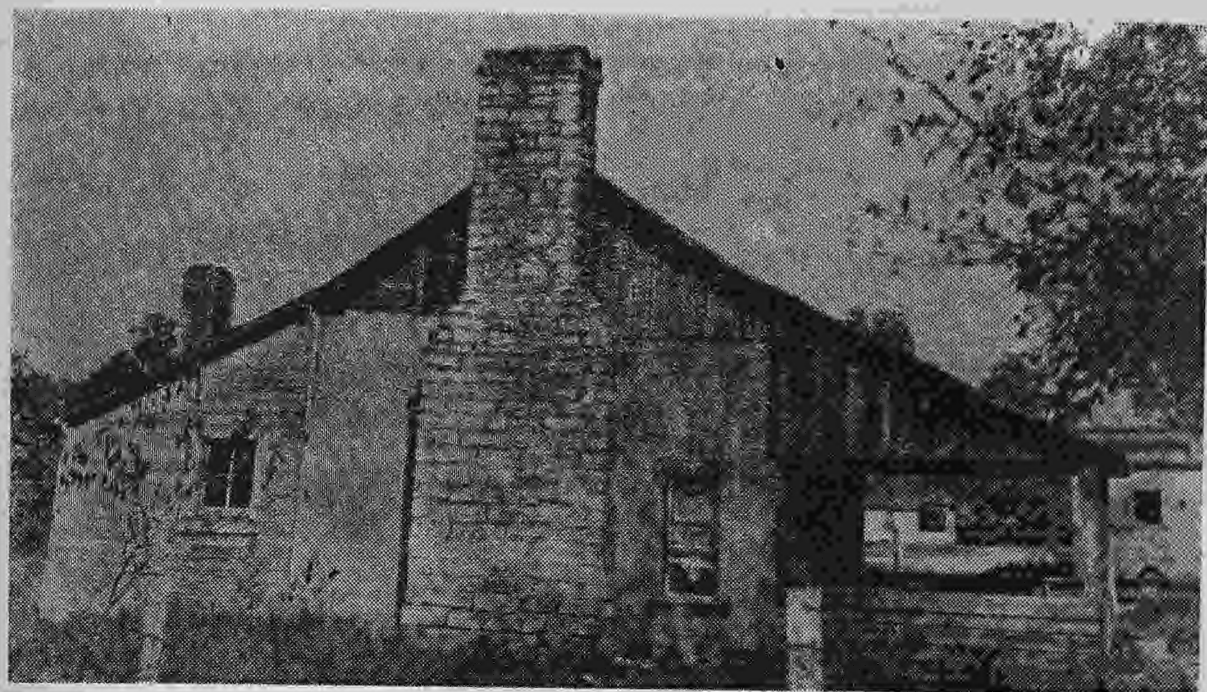


JOHN A. FRAZIER
Van Buren, Missouri
Phone FA 3-4412





SCENES AT BIG SPRING STATE PARK LOCATED IN CARTER COUNTY.



THE OLD SNIDER HOUSE which stood for more than 100 years at Kegville in Carter County.
It was razed this year (1959).

COMPLIMENTS OF

TERRY'S
Modern Motel

With or Without Kitchenettes

Air Conditioned

Guide Service on

Current River

36 YEARS EXPERIENCE

Van Buren, Mo.

COMPLIMENTS OF

Malden
Grain Co.

COMPLETE LINE OF

FARM SEEDS

DIXIE BRAND FEEDS

Malden, Mo.



We do not know who will be Queen of the Centennial; but Ada McMillian is Queen of the fiddlers. She is a true Carter Countian, having resided in the Chilton area since she was seven years of age. She is a true pioneer, and her mind is filled with mellow memories of ways and customs long gone by.

Ada learned to play the fiddle when she was a child; she plays by ear—which is the proper way to play a fiddle. As did her parents, she has played at many square dances. Square dancing was one of the pleasures and recreation of the pioneers. A new log house required a house-warming in the form of a square dance, with plenty of eats and a not too meager supply of the home-made. Square dances and church meetings were held in the homes of the pioneers. These kept the early families in touch with each other. Square dances are a part of the Ozark heritage and have helped to make Carter County unique and picturesque in its own particular way.



KANGAROO COURT TRIAL SPECTATORS



Pictured above is Mrs. Mabel McSpadden testifying at Centennial Kangaroo trial. Pictured above at left is Mrs. Colma Thomason, defendant at the trial.

about 51 pages

Part of the March 10, 1959 Centennial Opening Day Ceremony showing the razor and cosmetics being buried by Elvin Burrows, left, Chairman of Brothers of the Brush, and Coroner Coleman McSpadden, at right.



Magistrate Judge C. P. Turley speaking to the crowd in the courtyard on March 10, 1959. Other people pictured include some County officials and officials of the Centennial organization.

is Mrs. Colma Thomason, defendant at the trial.

Carter County Savings & Loan Association

BOX 285

Van Buren, Missouri

"SAFETY IN SAVINGS"

FINANCIAL STATEMENT AS OF JUNE 30, 1959

ASSETS

First Mortgage Loans	8732,303.02
F.H.A. Title 1 Home Improvement Loans	12,983.59
Federal Home Loan Bank Stock	10,200.00
U. S. Government Obligations	20,000.00
Cash on Hand and In Banks	111,403.78
Furniture and Fixtures	1,191.06
Deferred Charges	938.58
Other Assets	239.26
Total Assets	\$889,259.29

LIABILITIES

Share Savings and Investments Accounts	\$784,961.39
Federal Home Loan Bank Advance	40,000.00
Loans in Process	22,712.85
Advance Payments by Borrowers for Taxes and Insurance	4,723.07
Other Liabilities	10,394.49
Deferred Credits	5,335.90
Specific Reserves	4,795.67
General Reserves	16,385.92
Total Liabilities	\$889,259.29

CURRENT RATE 4% All accounts insured to \$10,000.00

Thanks to everyone who helped us make the first six months of 1959 a period of great growth—over \$200,000.00 in increased assets. Tell your friends to save and invest with Carter County Savings & Loan Association. No account is too small. We are glad to aid all members, both investors, and borrowers. Our savings accounts are suitable for every member of the family and may be opened by minors or adults, individuals or couples—also corporations, credit unions, labor unions, trust funds and escrow or estate accounts, savings invested before the 15th of any month draw dividends as of the 1st of that month. Office hours are 9:00 A.M. to 4:00 P.M. Monday through Friday and 9:00 A.M. to 12:00 noon Saturday.

RECORD OF GROWTH

December 31, 1954	\$42,275.52
December 31, 1955	\$100,532.94
December 31, 1956	\$160,801.00
December 31, 1957	\$259,131.29
December 31, 1958	\$661,271.58
June 30, 1959	\$889,259.29



977.889 C245
CARTER COUNTY CENTENNIAL, 1859-1959
1959 NI MCPL



3 0000 00129913 4...

Carter County

State Bank

Van Buren, Missouri

Personalized attention to your needs

Fifty years

serving

the

financial

requirements

of this

Community

Member Federal Deposit Insurance Corporation