

Res. of JUDGE W. F. GORDON, in the City limits of Liberty, Clay County, Mo.



CLAY COUNTY COURT HOUSE
AT LIBERTY, MO.



(From portrait painted by Bingham in 1835.)

COL. SHUBAEL ALLEN.

Born in Orange Co. N.Y. 1793. Immigrated to Missouri in 1817. Moved to Clay Co. Mo. 1820. Was married to DINAH AYRES TRIGG, in 1822, and died in 1841.



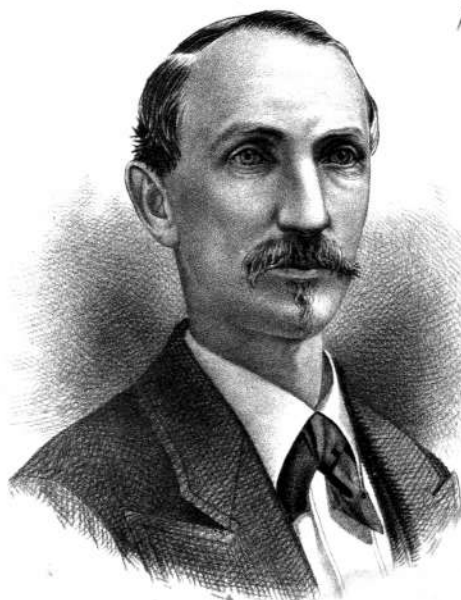
From portrait painted by Bingham in 1835.

MRS. DINAH A. ALLEN.

Born in Estill Co. Ky. 1803. Immigrated to Howard Co. Mo. with her father COL. STEPHEN TRIGG, (who was from Bedford Co. Va.) in 1818, was married to COL. SHUBAEL ALLEN, and came to Clay Co. Mo. in 1822.



Yours Truly
A. M. Doniphans



D. C. Allen



Yours Truly
J. M. Allen

PHYSICIAN.



J. J. Moore
—Collector—



Clinton Perry
County Treasurer
&
Mayor of Liberty.



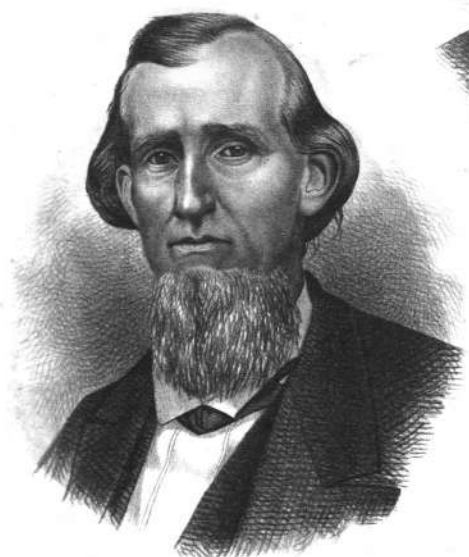
Luke W. Burris
—County Clerk—



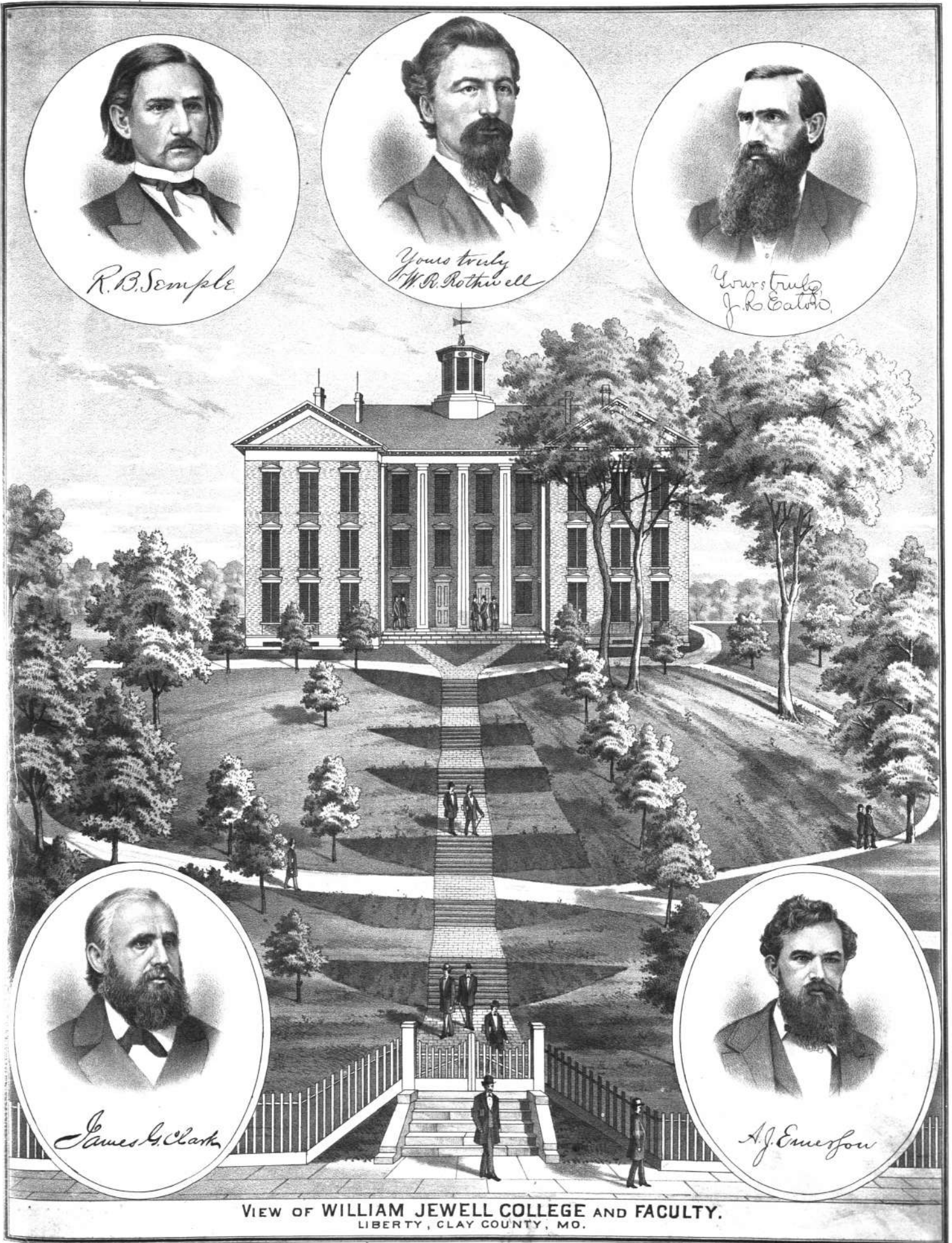
John S. Goram
—Sheriff—



S. G. Shindusky
—Recorder of Deeds—



Alex. G. Calhoun
—Circuit Clerk—



R. B. Semple

*Yours truly
W. R. Rothwell*

*Yours truly
J. R. Eaton*

James G. Clark

A. J. Emerson

VIEW OF WILLIAM JEWELL COLLEGE AND FACULTY.
LIBERTY, CLAY COUNTY, MO.



W. F. Gordon



A. Lightburne



—JOHN R. PETERS—

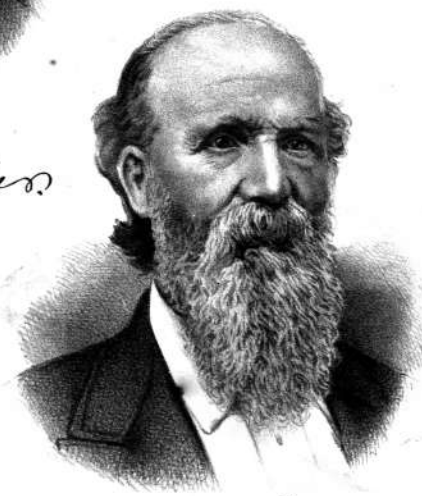
Born in Kentucky, Jan. 12th 1798.
Died at Liberty, Mo. July 22nd 1860.
Moved to Clay Co. Mo. Oct. 1825.



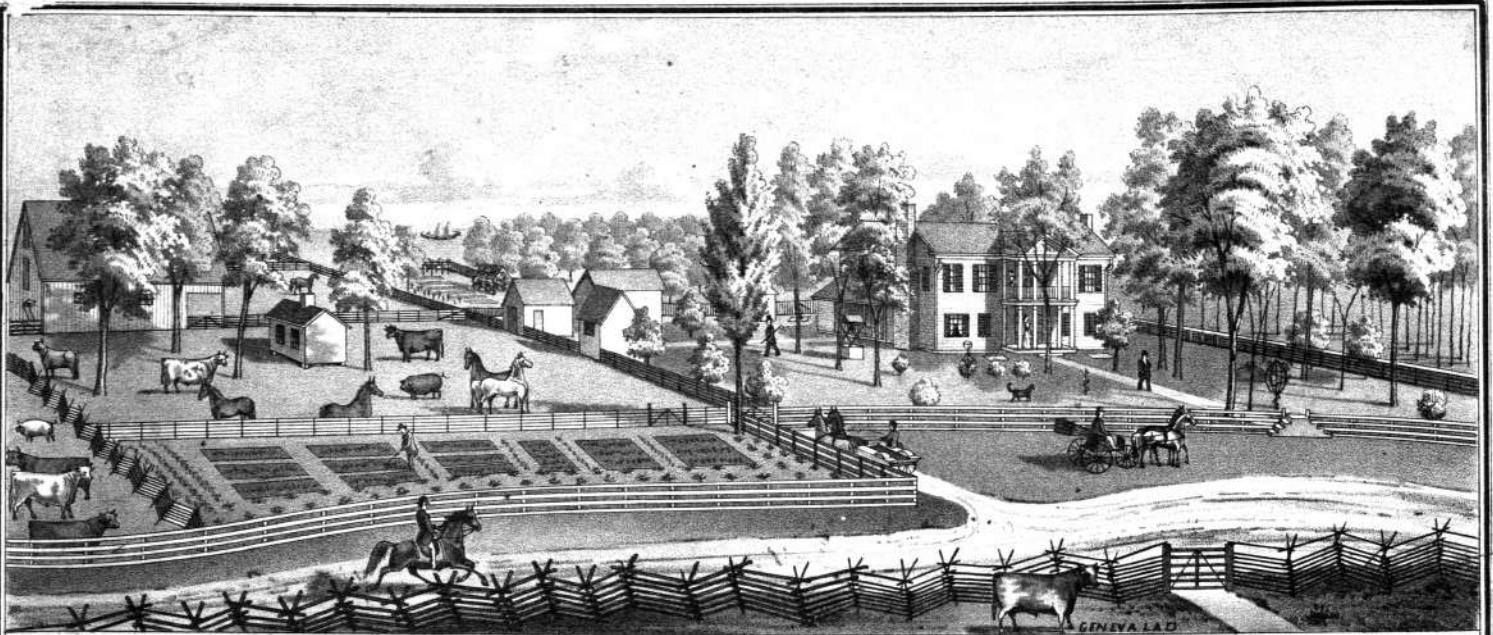
*Respectfully,
Robt. H. Miller*



O. H. Corbin
Proprietor of the Liberty Flouring & Woolen Mills.



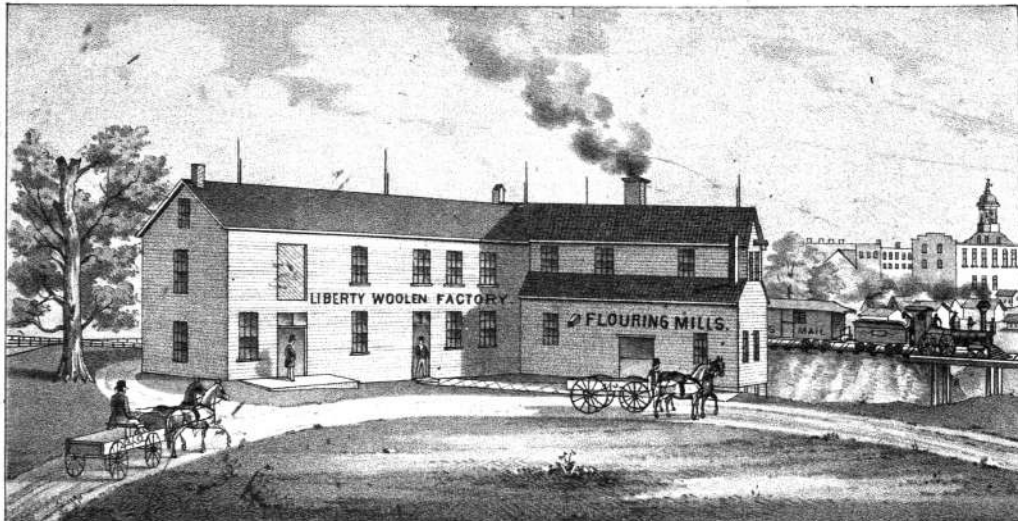
Hannis Gittings



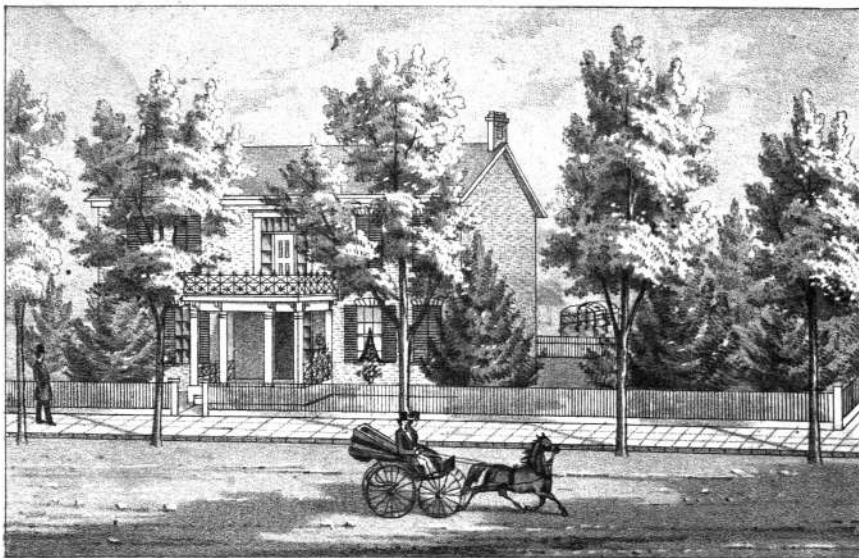
ROUND POINT PLACE.

Sec. 24 & 25 Tp. 53.R.32. Containing 507 Acres.

FARM RESIDENCE OF THOS. M. GOSNEY, 4 M. WEST OF KEARNEY & 10 M. NORTH OF LIBERTY, CLAY CO. MO.
Born in Ky. Jan. 13th, 1815. Moved to this place 1845.



LIBERTY FLOURING MILLS & WOOLEN FACTORY, O.H. CORBIN & CO. PROPRIETORS.
MANUFACTURERS OF CASSIMERES, FLANNELS, JEANS, BLANKETS, STOCKING YARNS OF ALL KINDS, ALSO FLOUR,
MEAL, HOMINY, GRIT, &c. ORDERS SOLICITED, SAMPLES AND PRICES SENT ON APPLICATION.
ESTABLISHED IN 1850. LIBERTY, CLAY CO. MO.



RES. OF D. HUGHES, COLLEGE ST. LIBERTY, MO.



John M. Burns
ATTORNEY AT LAW



Yours Truly
Joseph Henry
KEARNEY, MO.

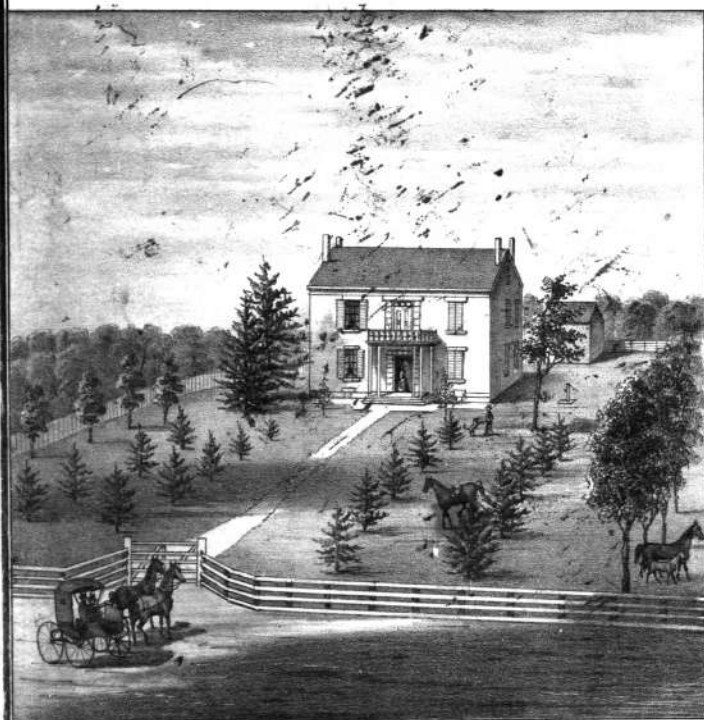


— DANIEL PATTON. —

Copied from a picture made on an ivory plate by the Artist
to the King's family, England, A.D. 1839.
Born at Ashville N.C. Jan 8th 1799. Moved to Missouri, 1826

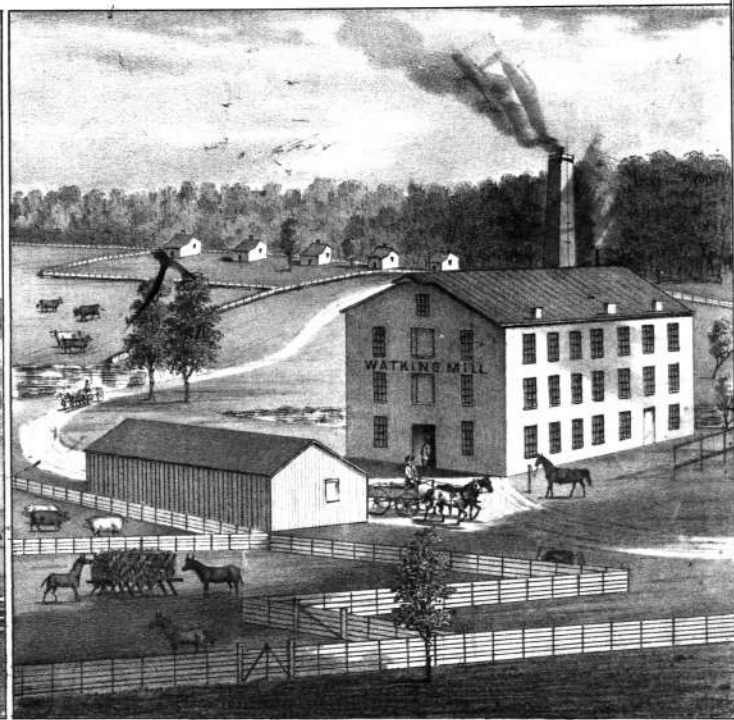


HON. THOMAS McCARTY.

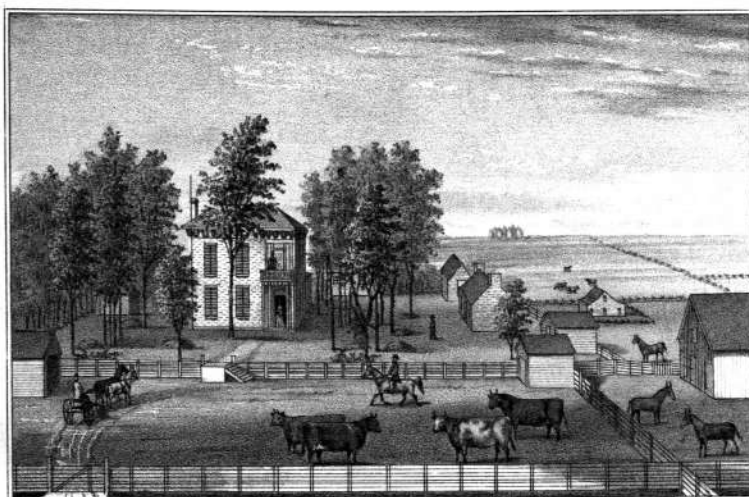


RES. OF W. L. WATKINS.

W. L. WATKINS & SON, MANUFACTURERS OF WOOLEN GOODS, ALSO FARMERS & STOCK DEALERS.
4 M. S. W. OF LAWSON, CLAY CO. MO.



WATKINS WOOLEN MILLS.



Farm Res. of D.M.BEVINS, 5½ miles N.W. of Kearney, Clay Co. Mo.



—DAVID M. BEVINS.—

Born in Madison County Ky. Jan. 17th 1805.
 Moved to the territory of Clay County Mo. Oct. 10th. 1821.
 Married April 16th 1830.
 Height, 6ft. 4in. Weight at present 310 lbs.



—HULDAH C. BEVINS.—

Born in Fayette County Ky. April 5th. 1815.
 Moved to Clay County Mo. 1828.
 Married April 16th 1830.