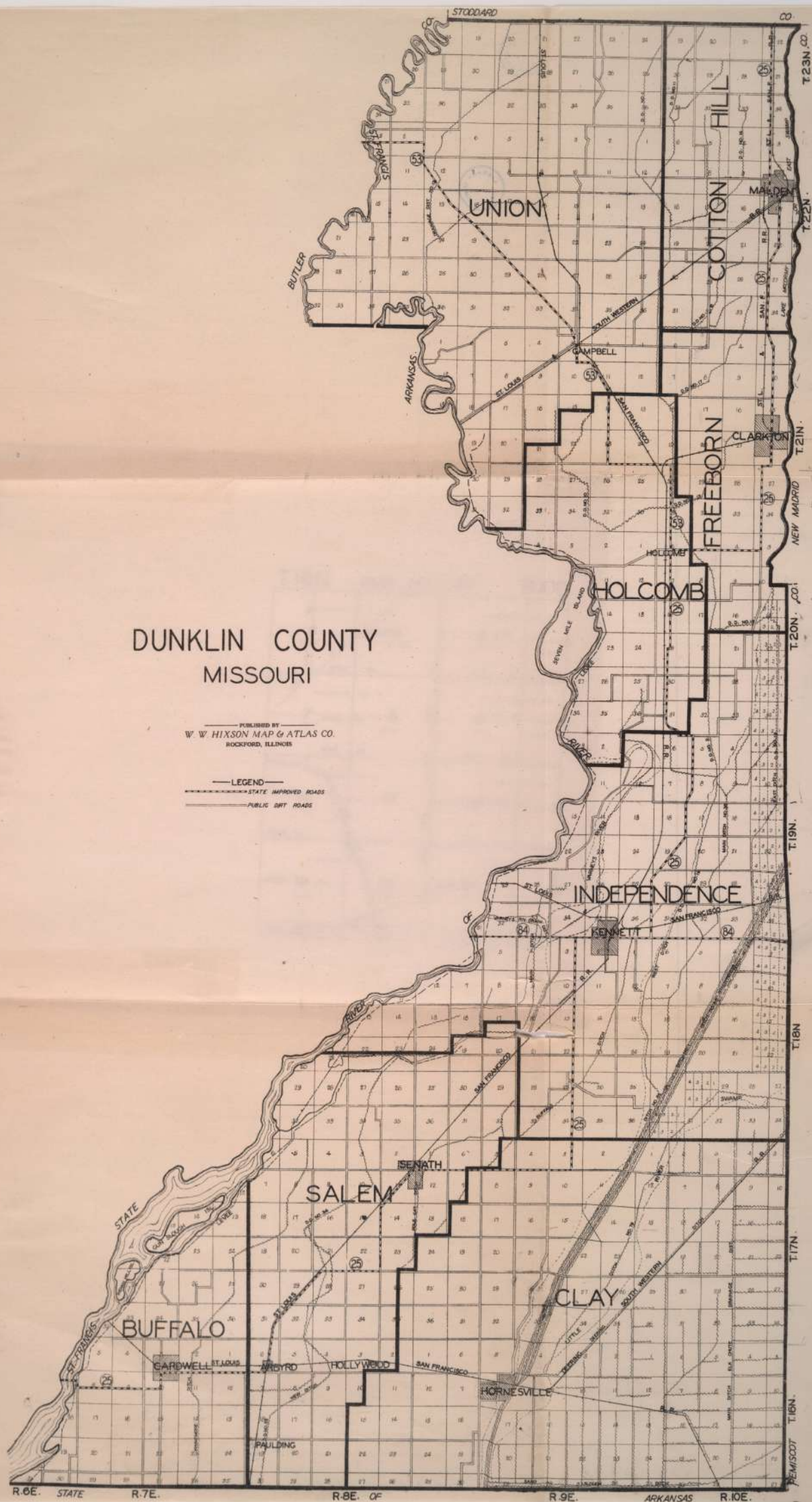


# DUNKLIN COUNTY MISSOURI

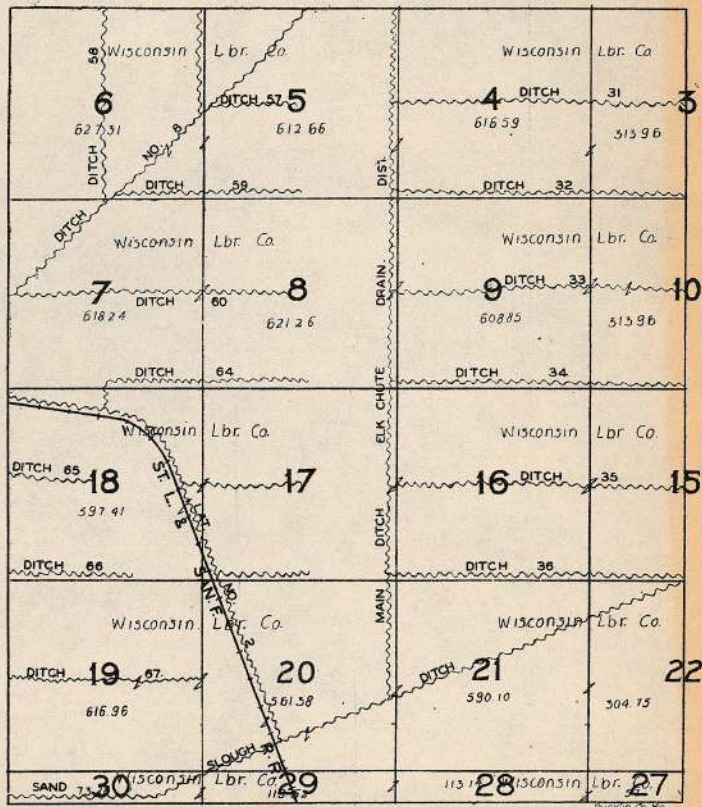
PUBLISHED BY  
W. W. HIXSON MAP & ATLAS CO.  
ROCKFORD, ILLINOIS

LEGEND  
STATE IMPROVED ROADS  
PUBLIC CRT. ROADS



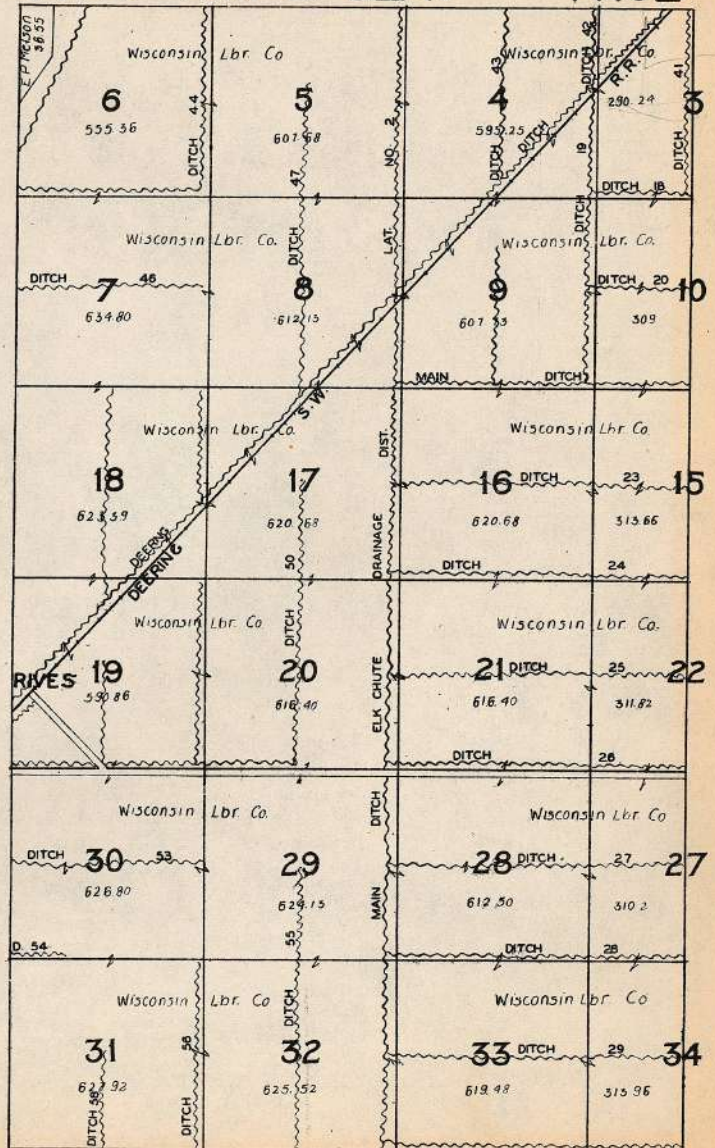
333,09778

T. 16N. PART OF CLAY R. 10E.

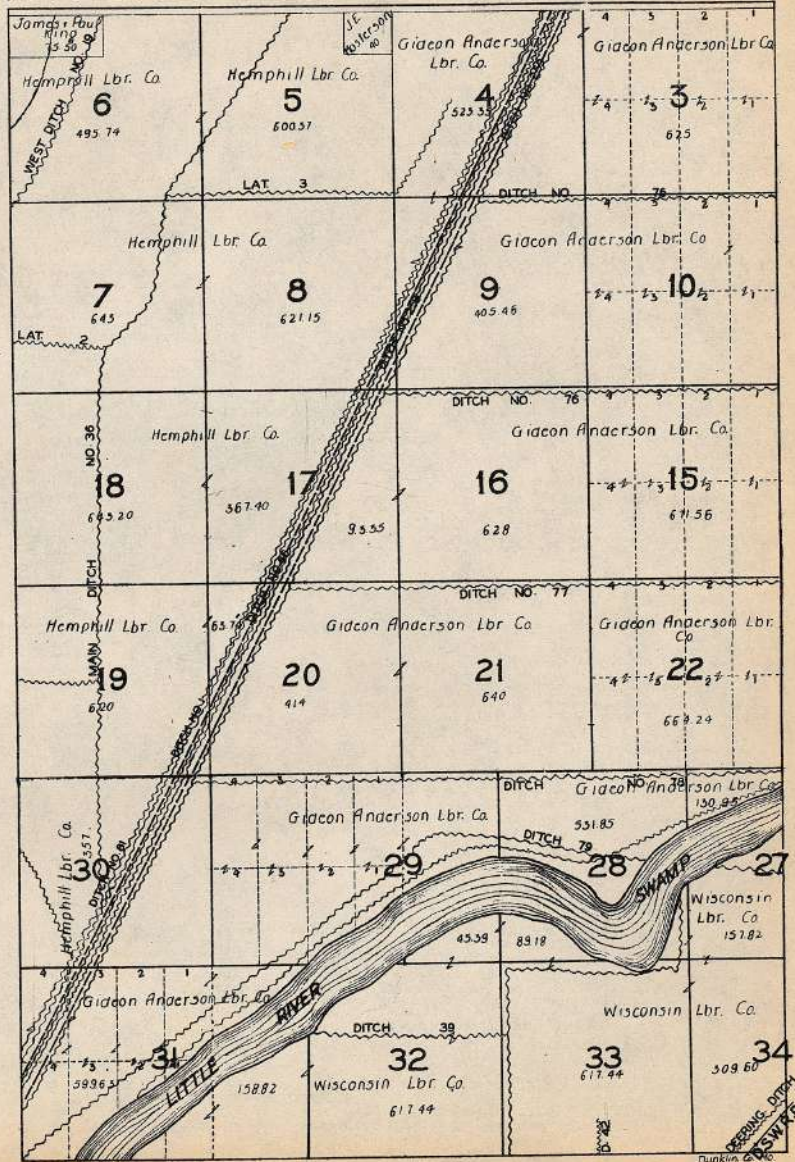


284823 581

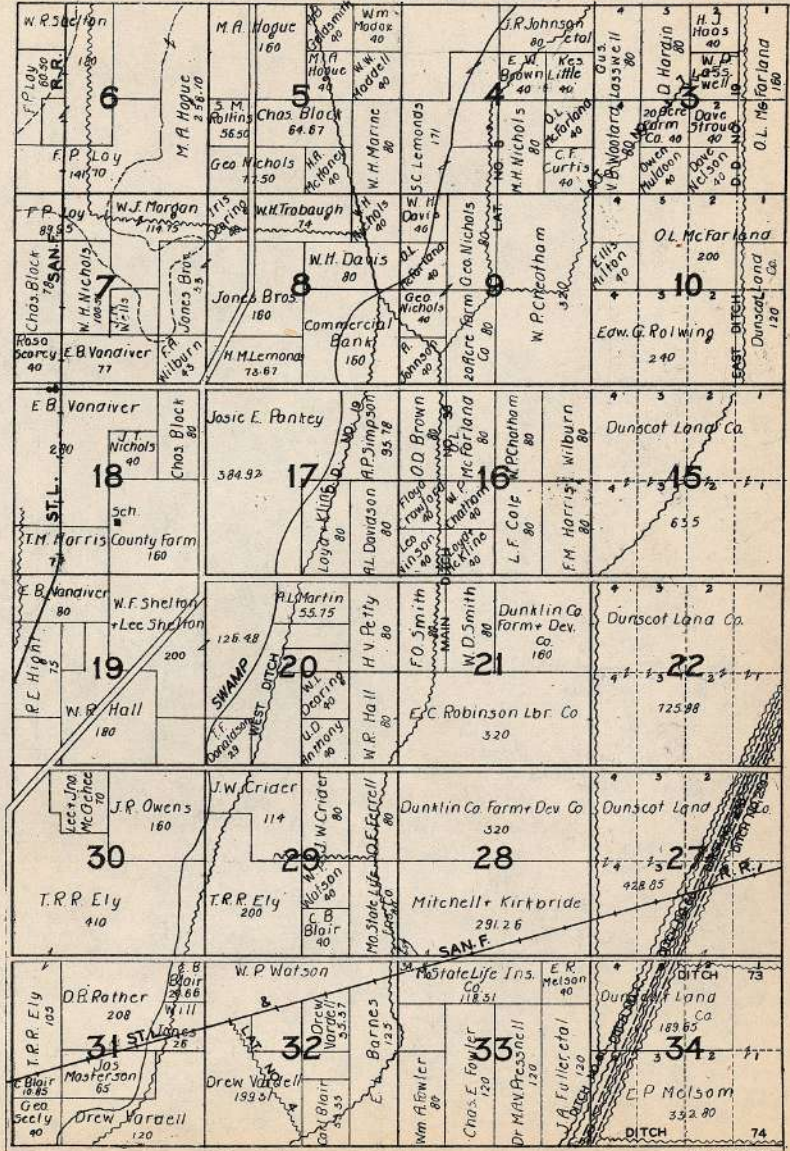
T.17N. PART OF CLAY R.10E



# T.18N. PART OF INDEPENDENCE R.10E.

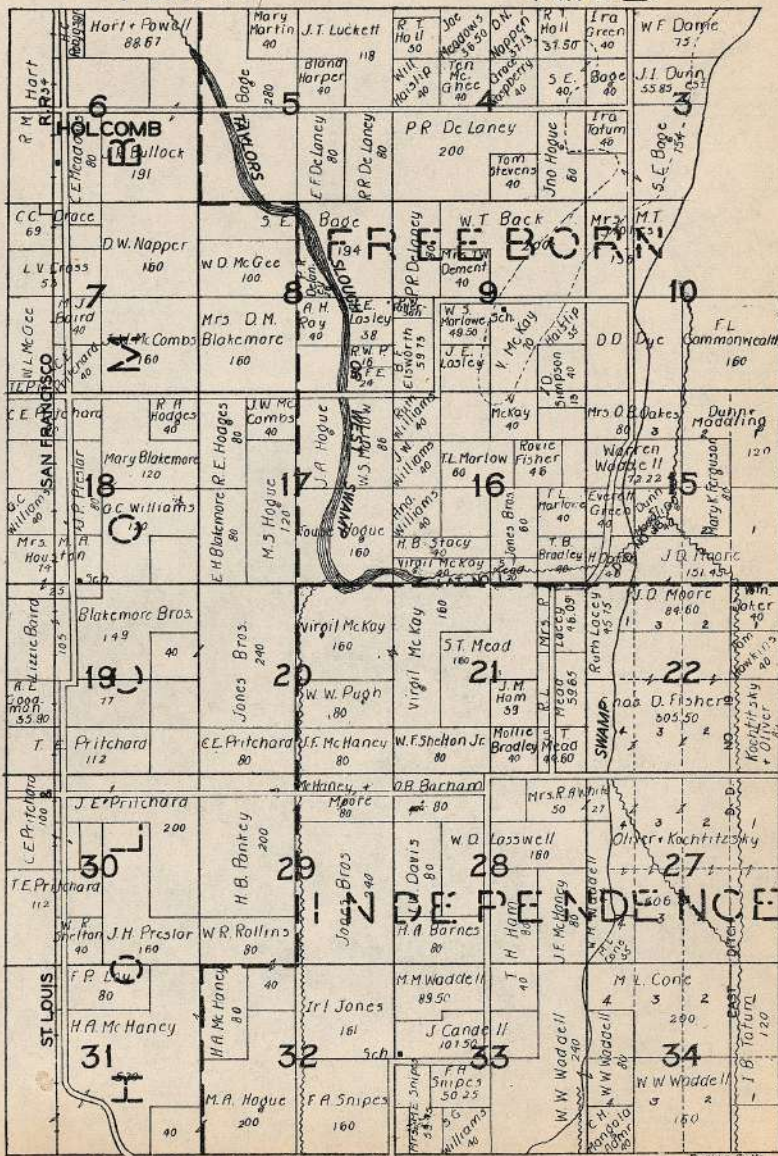


T. 19N. PART OF INDEPENDENCE R. 10E.



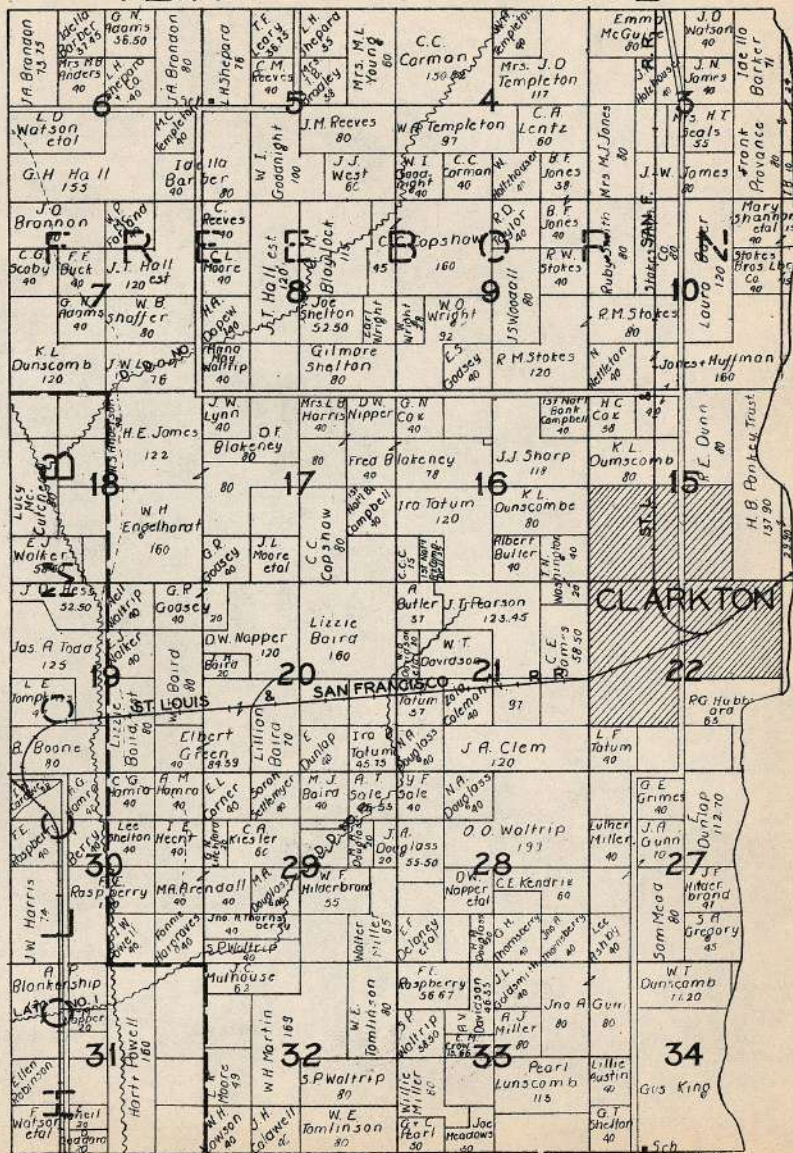
T.20N.

R.10E.

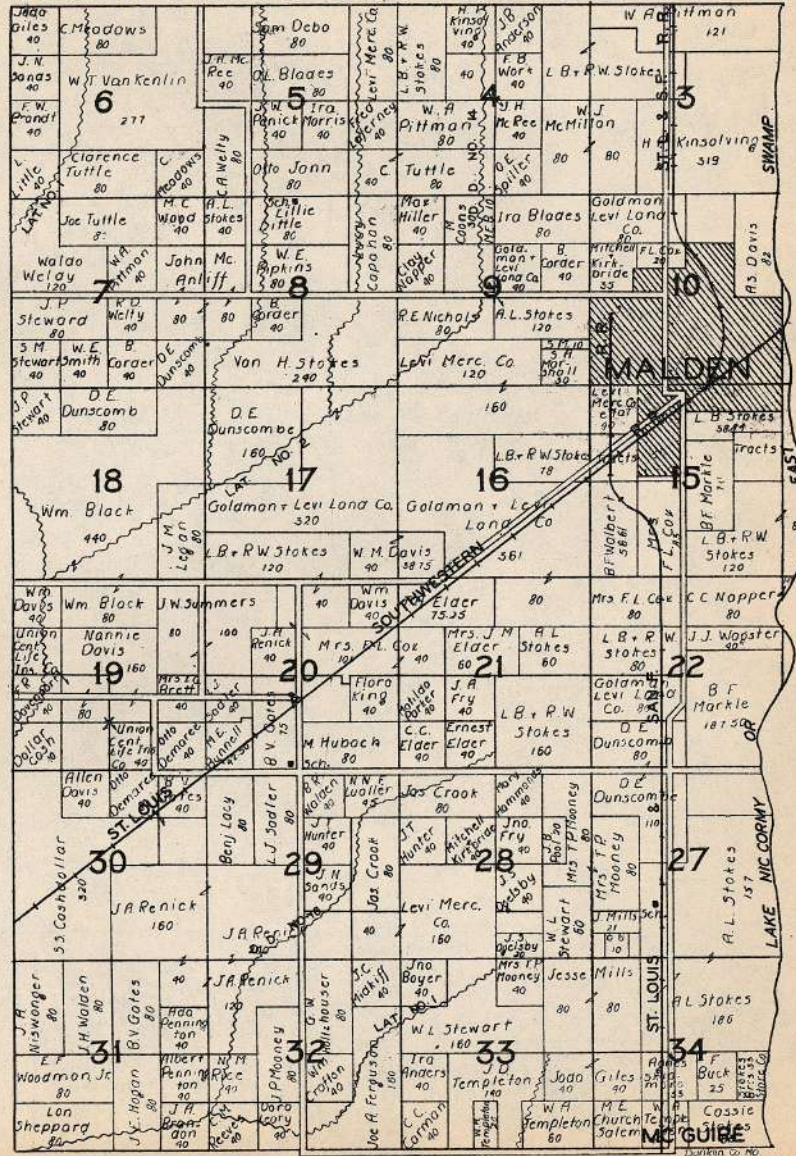


T.21N.

R.10E.

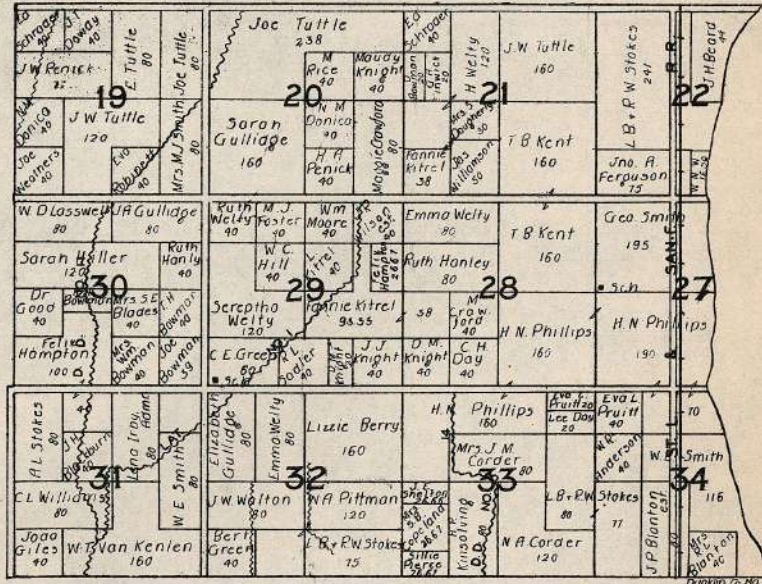


T.22N. PART OF COTTON HILL R.10E.





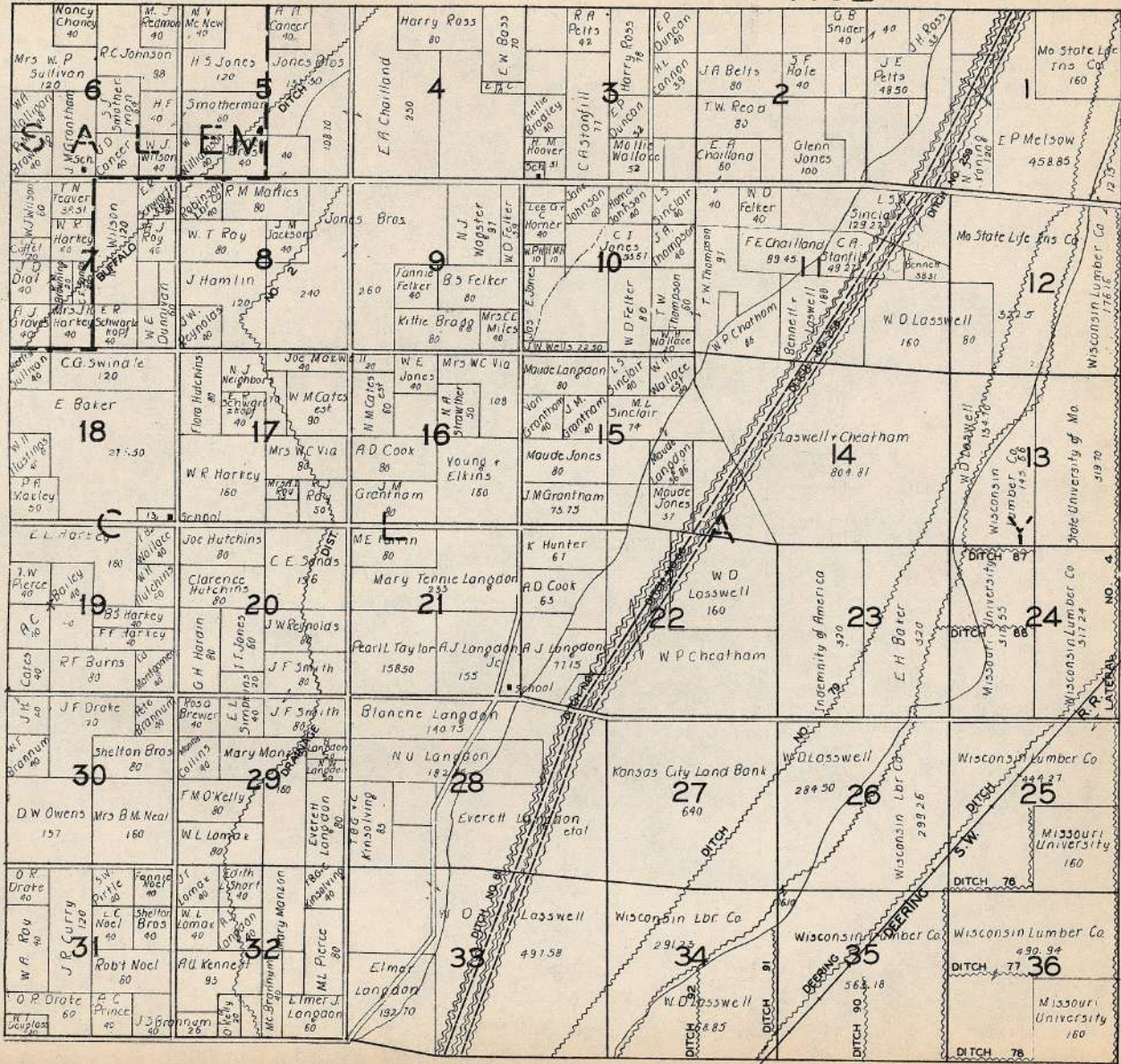
T.23N. PART OF COTTON HILL R.10E.





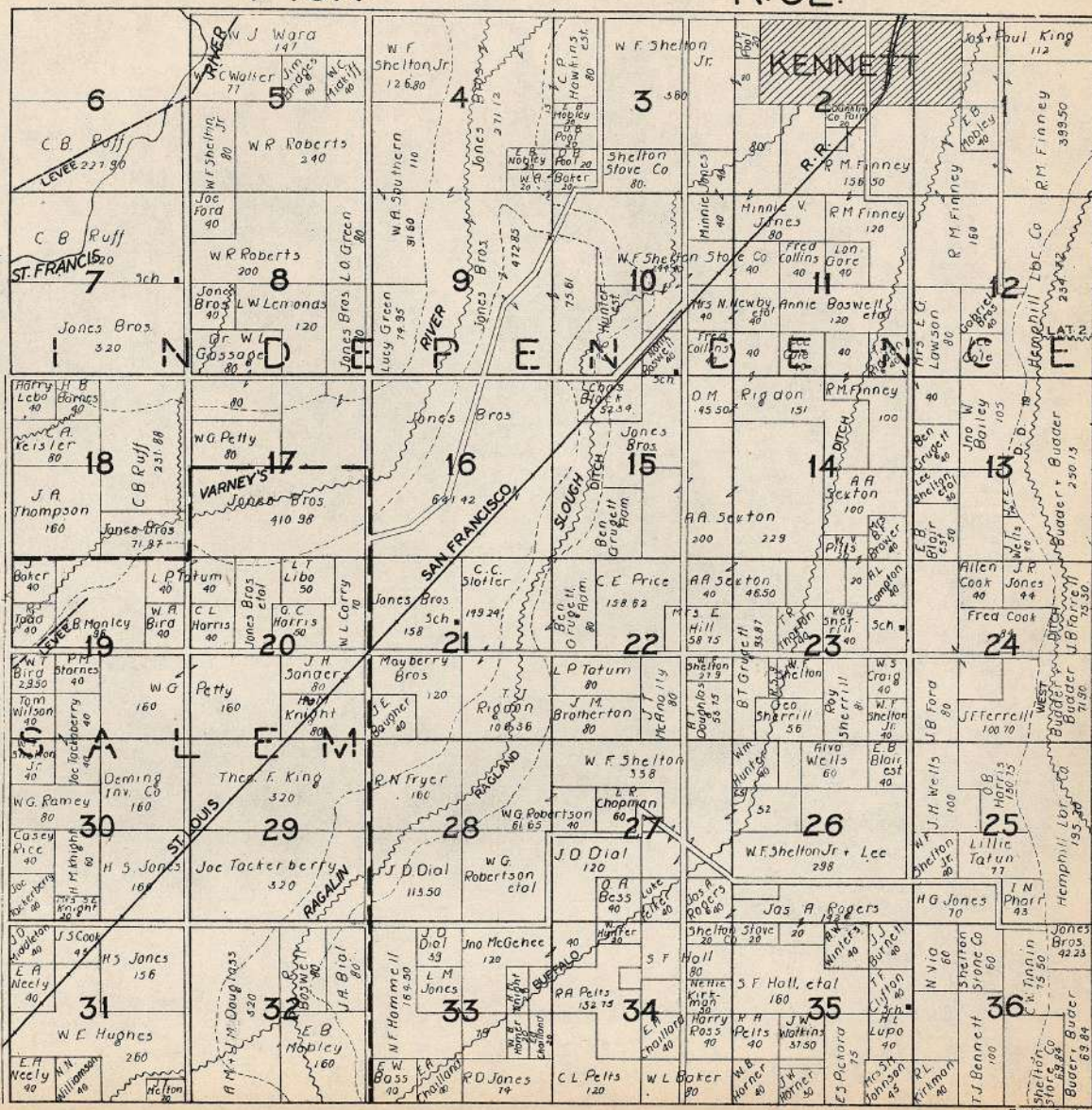
T.17N.

R.9E.



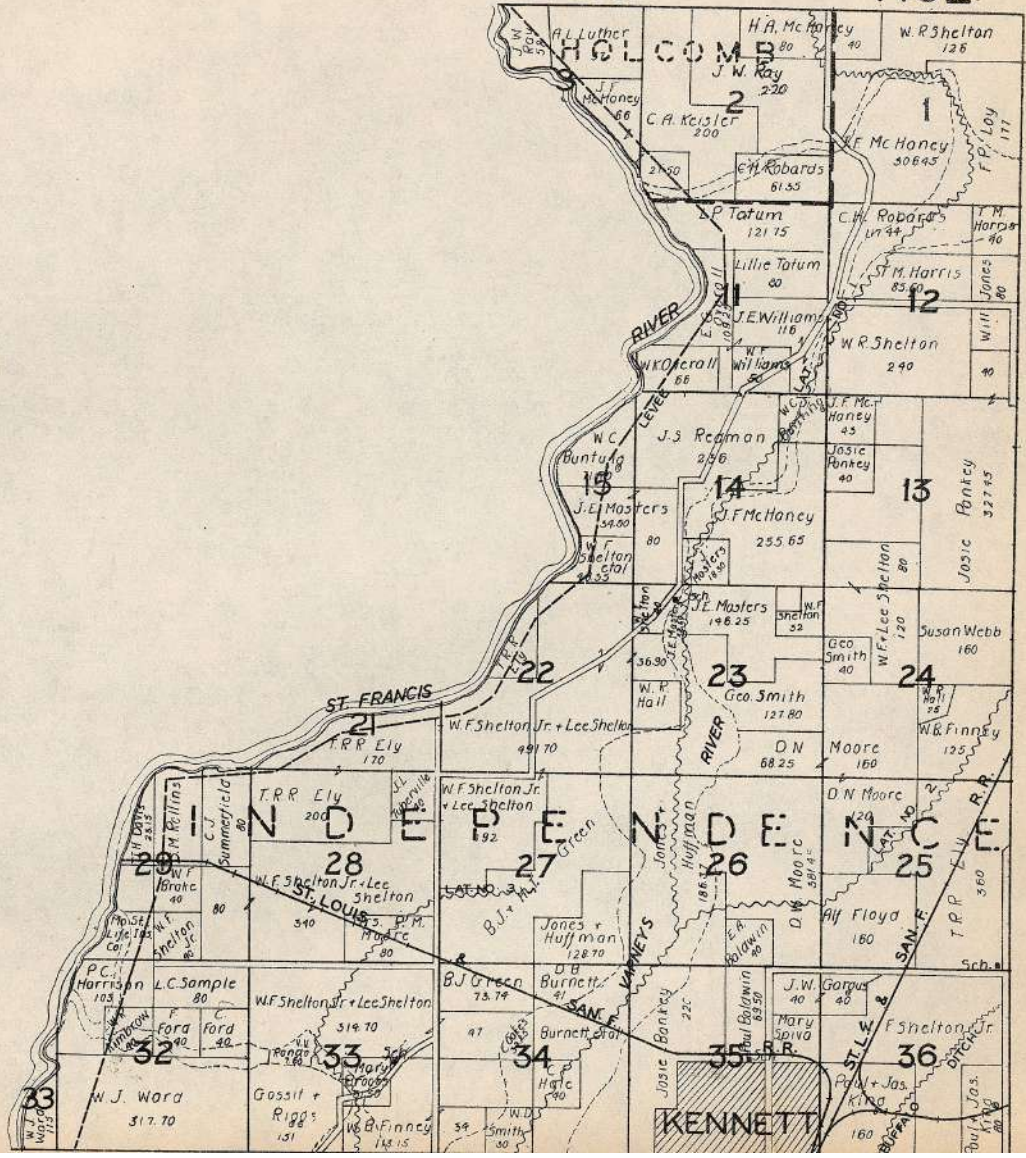
T. 18N.

R. 9E.



T.19N.

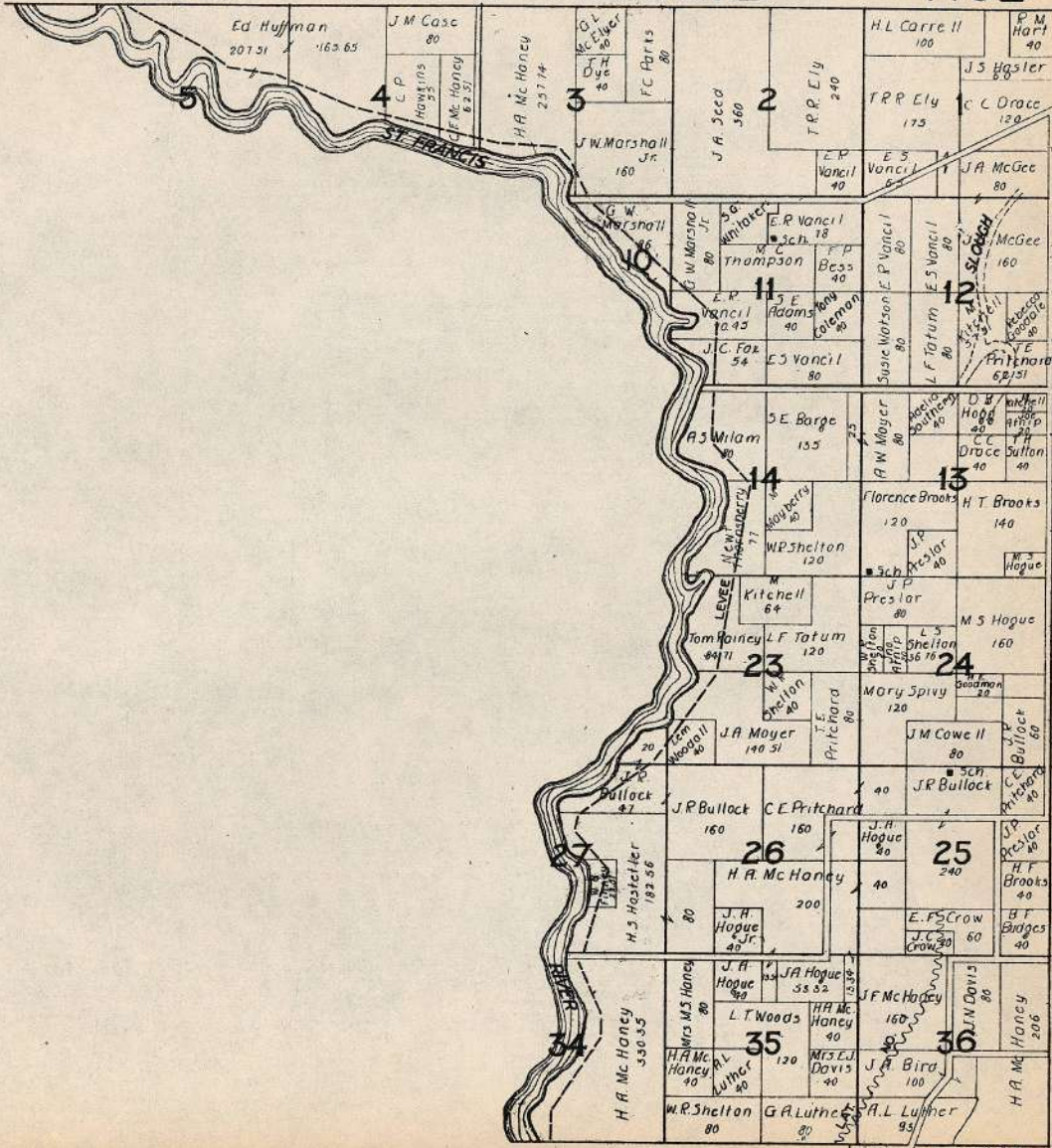
R.9E.



T.20N.

PART OF HOLCOMB

R.9E.



T.22N.

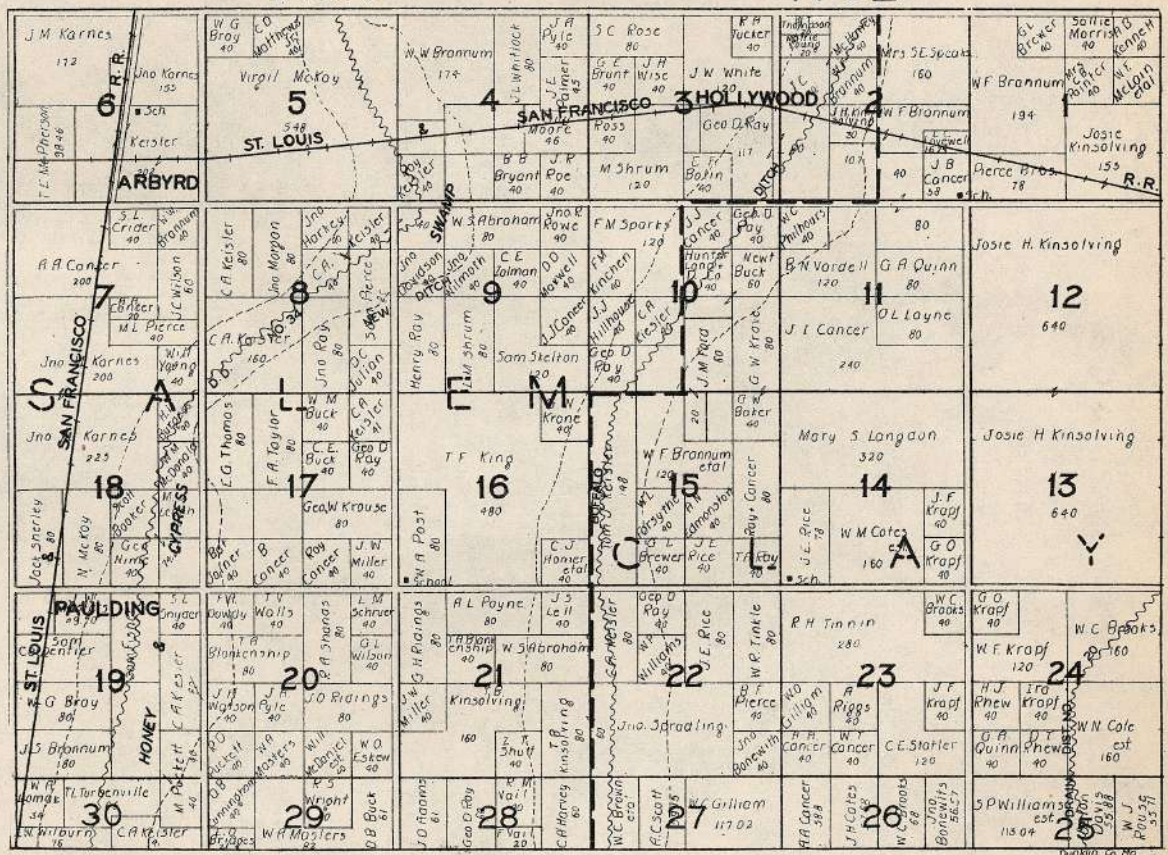
PART OF UNION

R.9E.

6 A. Egloff 591 14	5 L. Meyer 80 Conn Mutual Life Ins Co 242 25	4 W.L. Whitehead 93-25 Dunklin Co Bank 200	3 Chas Gregory 140 Ellen Gregory 140	2 W.F. Snider 40 W.M. Wallace 40 V. Snider 40 W.T. Snider 40	1 G.C. McInnis 80 A.L. Stokes 80
7 Sam Snider 40 Ben Vincent 160	8 W.P. Wilson 80 Fred Koeller 80	9 R. Lehm 160	10 L.I. White 80 J.F. Vincent 125 Jas. White 80 E.J. Walker 50	11 5.G. Snider 240 5.G. Snider 120	12 J.N. Sands 120 J.A. Taylor 80 A.C. Croft 40
18 Conn Mutual Life Ins Co 177.91	17 C.A. Keister 80	16 J.L. White 80	15 J.T. White 120	14 F.M. Snider 40	13 Stewart Hirs 160
19 Weger Bros 480	20 J.A. Lee 40	21 A. King 80	22 Z.T. Tompkins 175	23 Jas. I. Brown 120	24 W.B. Grimes 80
30 E.Y. Baldwin 520	29 Mrs L.A. Montgomery 320	28 C. Deley 80	27 Henry Coleman 80	26 Ed. Allen 110	25 N.A. Gehrig 320
31 G. Goldsmith 100	32 Eric D. Smith 100	33 J.E. Ricks 180	34 C.A. Crow 120	35 Robt. Stephens 138	36 DC Steele 140

T. 16N.

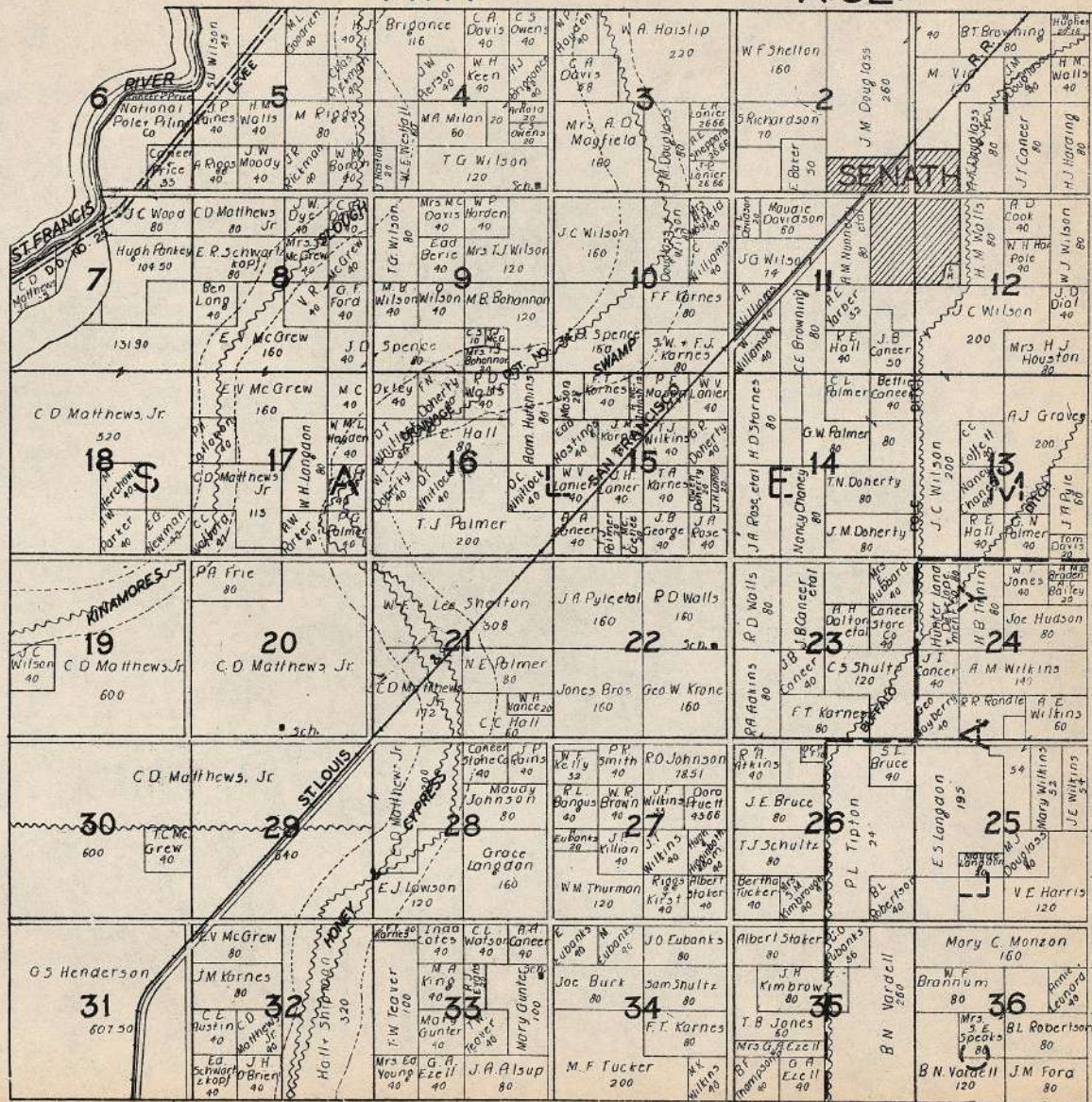
R. 8E.



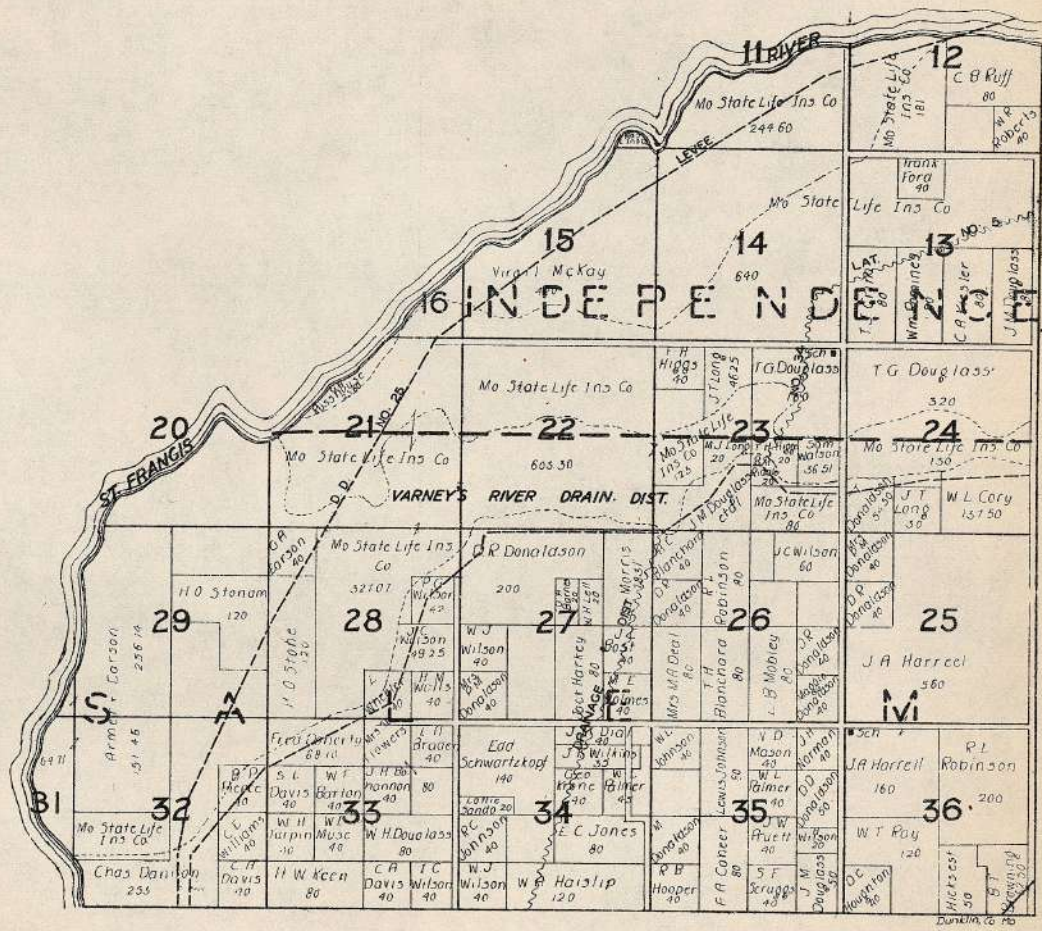


T.17N.

R.8E.

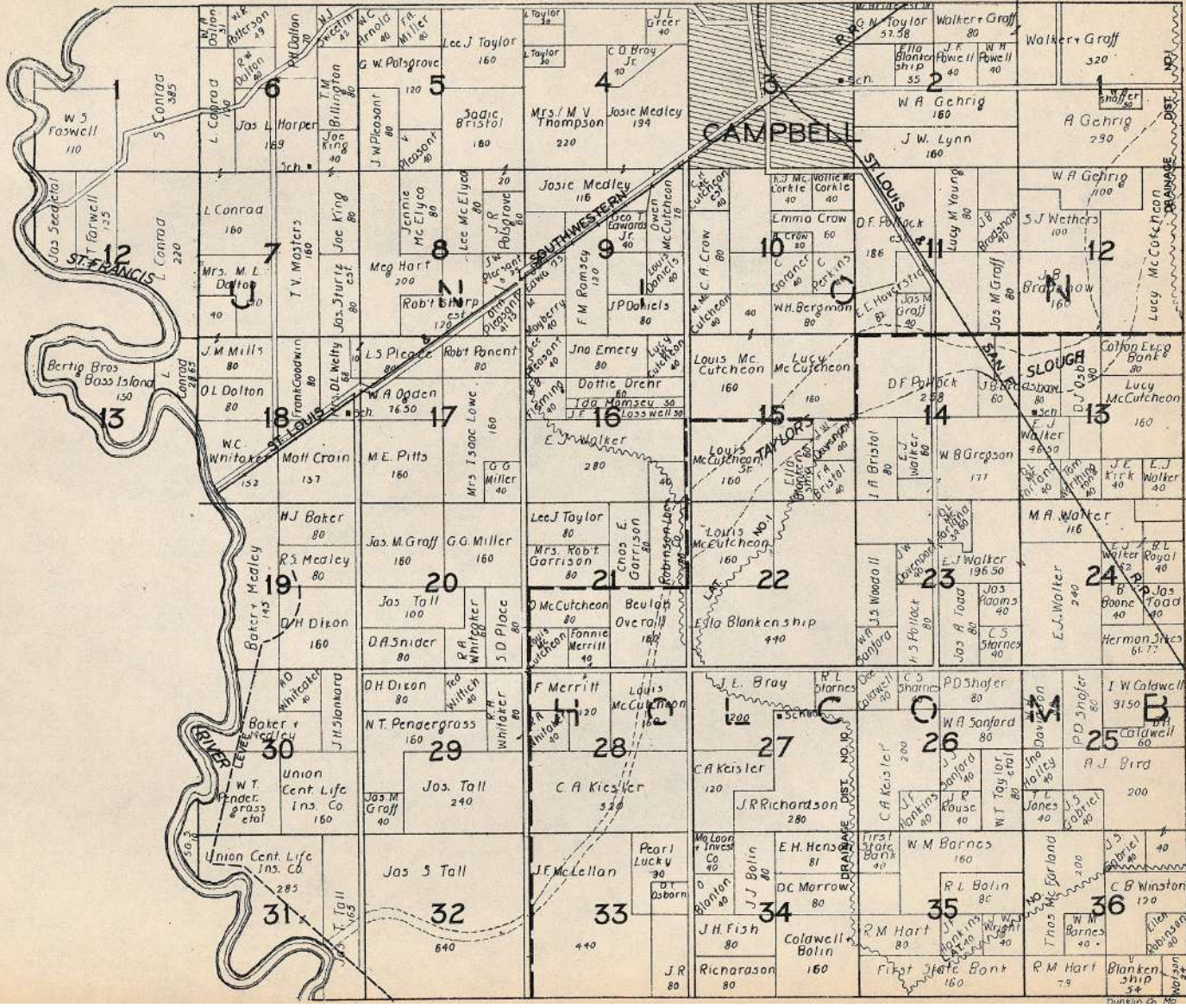


T.18N. R.8E.

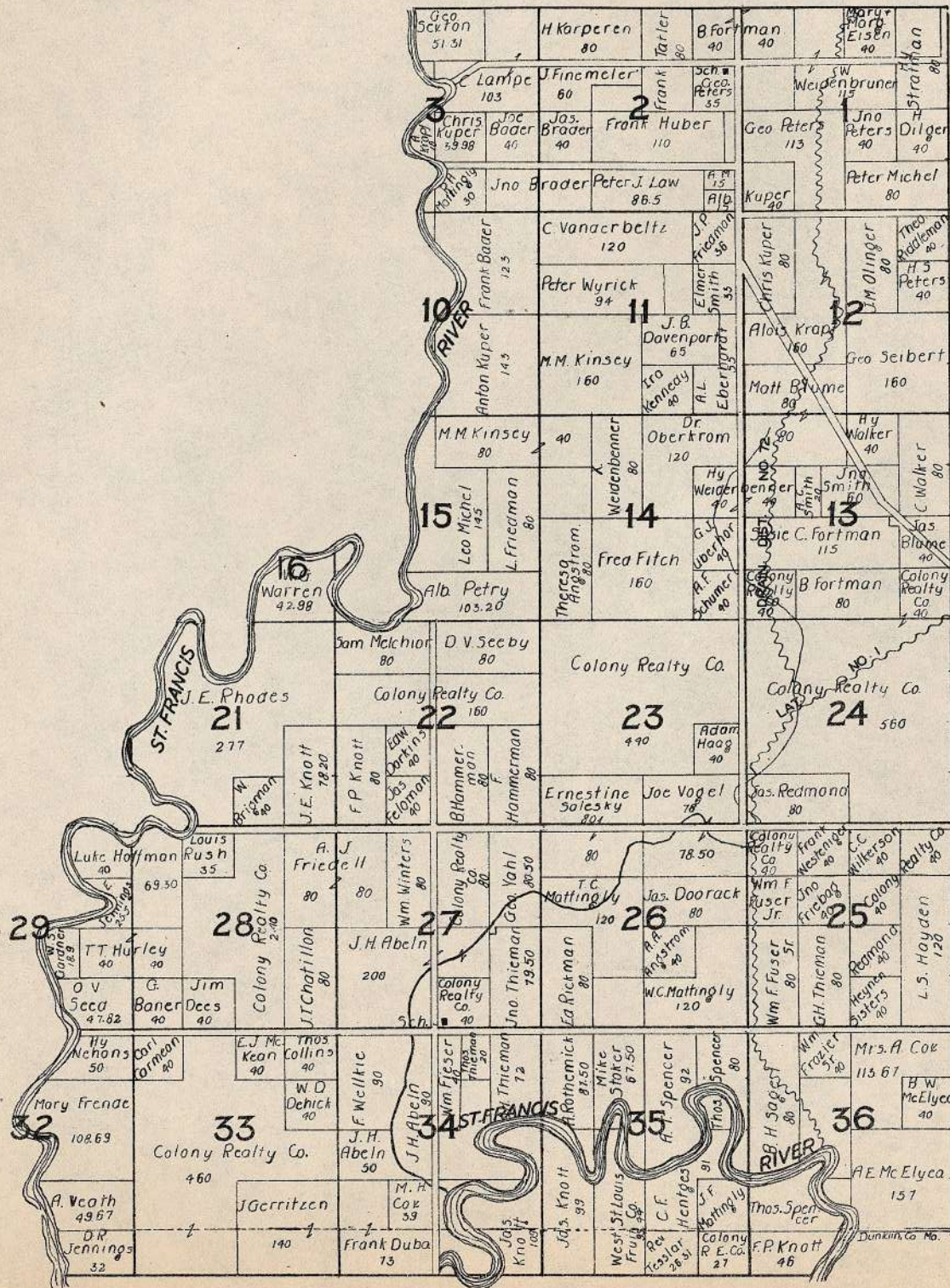


T. 21N.

R. 8 & 9E.



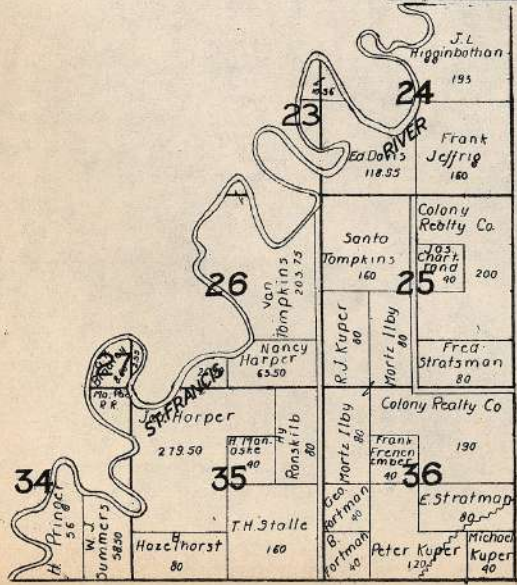
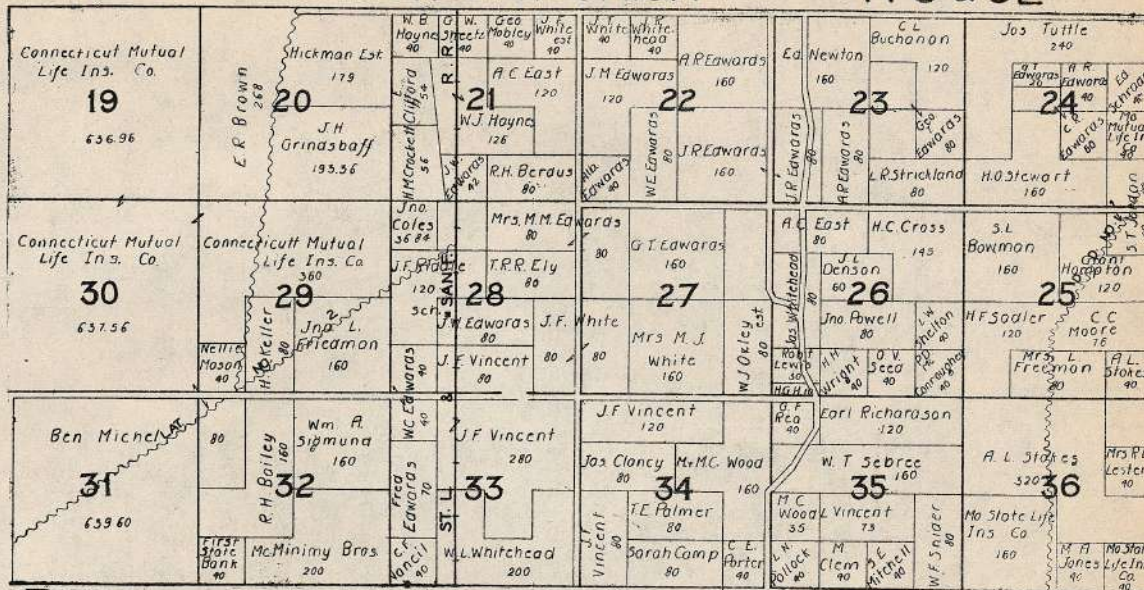
T.22N. PART OF UNION R.8E.



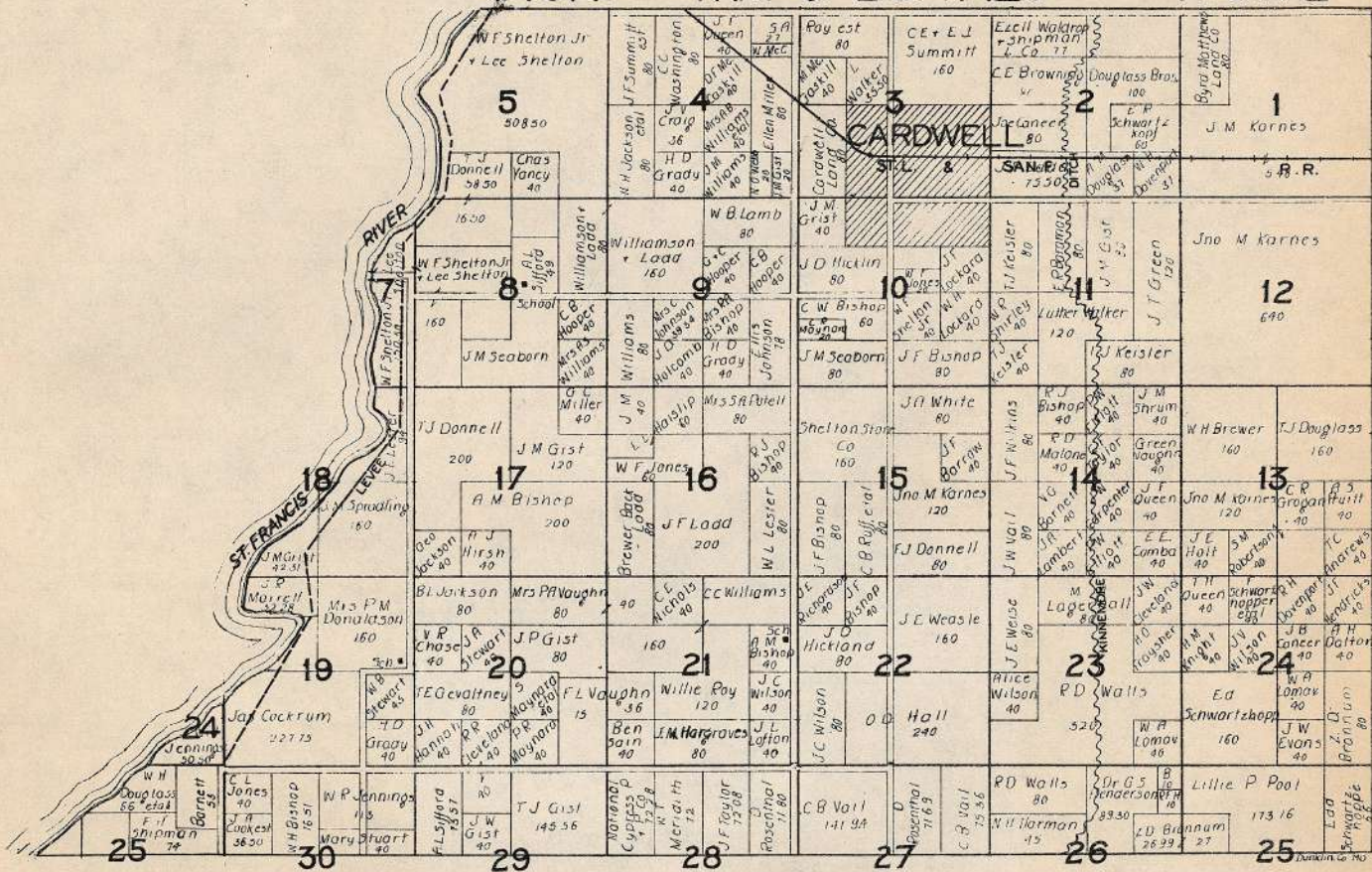
T. 23N.

PART OF UNION

R. 8 & 9E.



T. 16N. PART OF BUFFALO R. 6 & 7E.



T.17N. PART OF BUFFALO R.7E.

