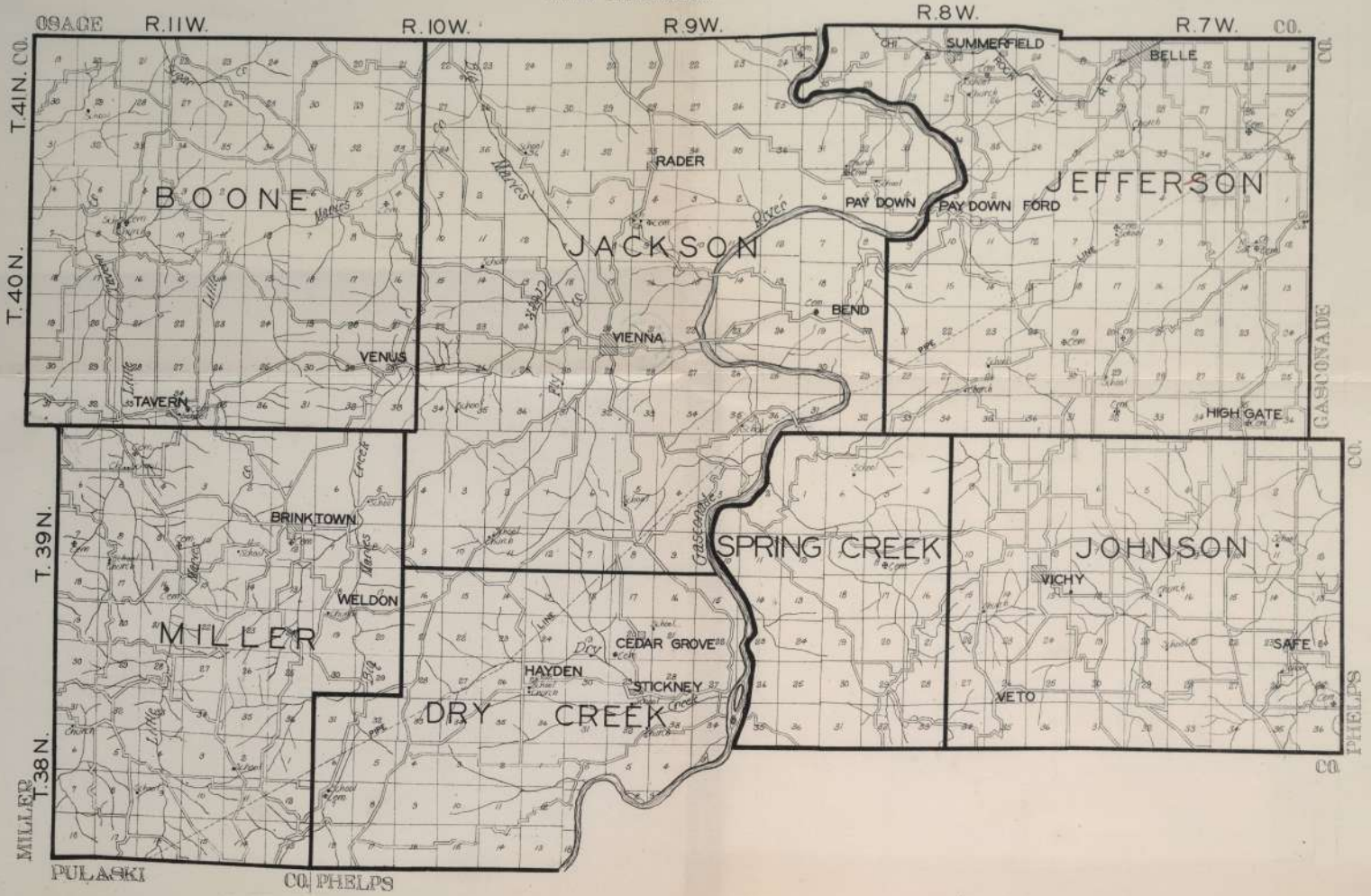


MARIES COUNTY MISSOURI

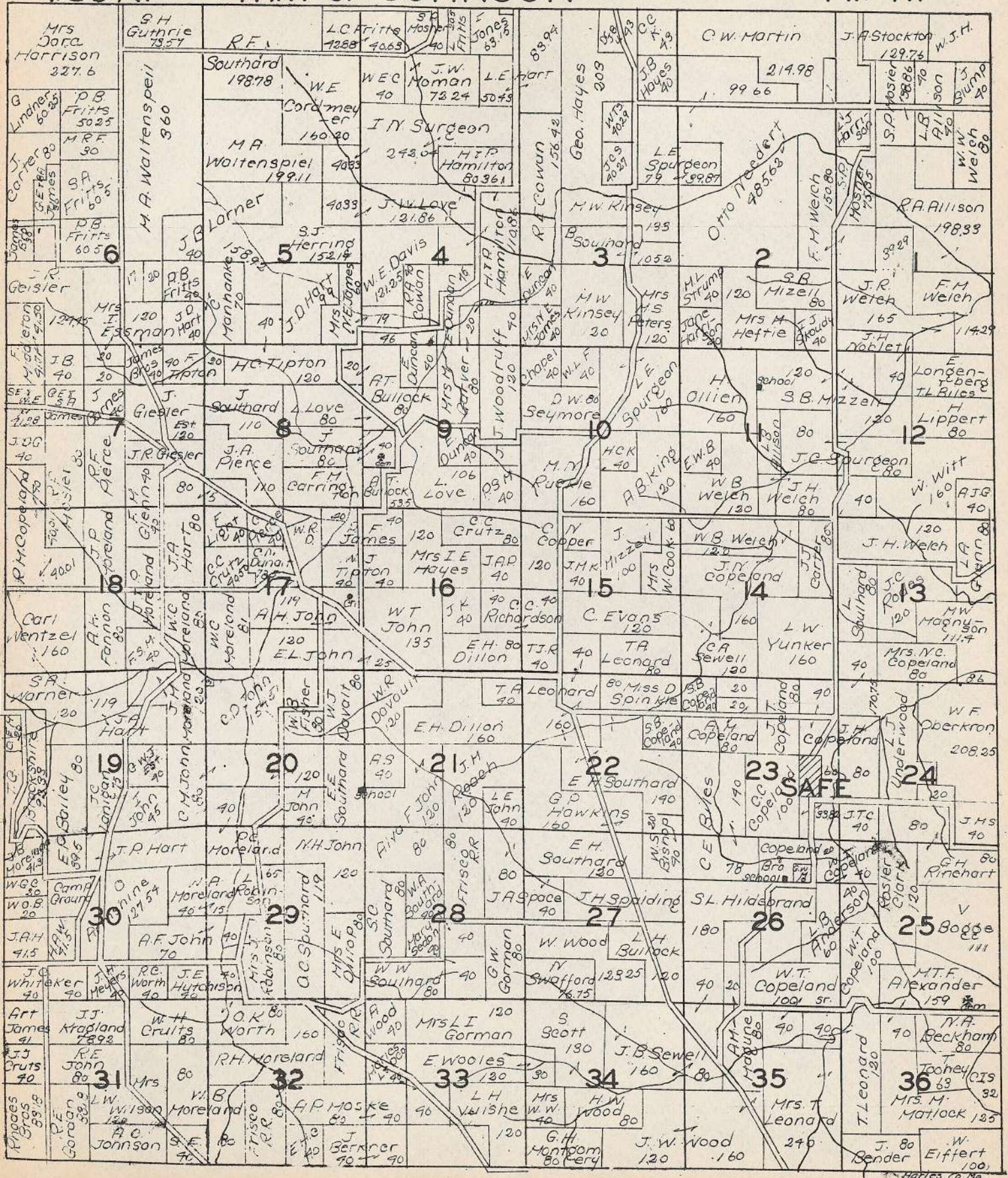
PUBLISHED BY
W.W. HIXSON & CO. ROCKFORD ILLINOIS



T.39N.

PART OF JOHNSON

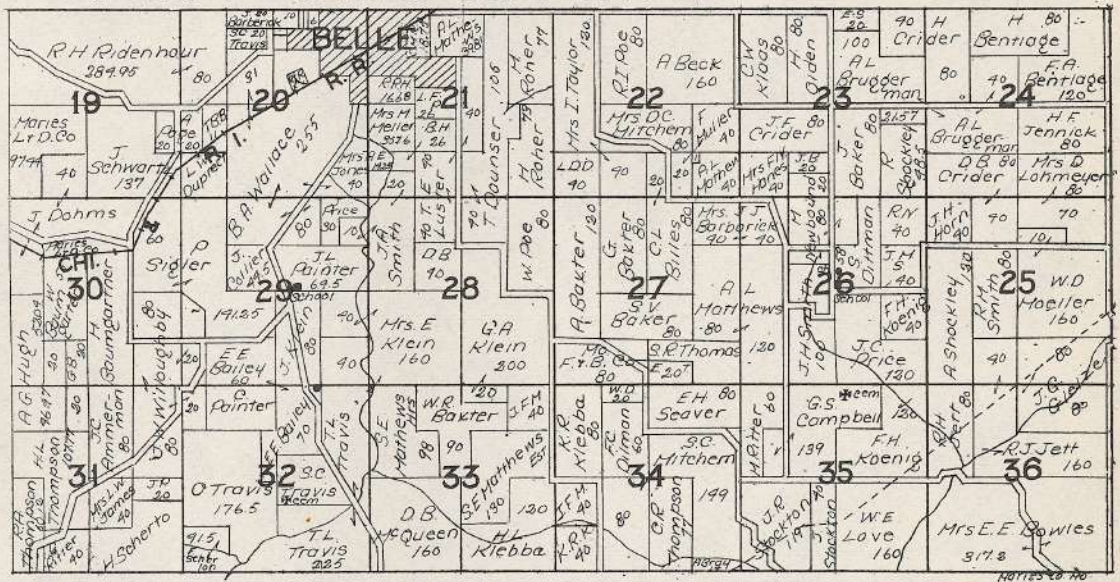
R.7W.



T.41N.

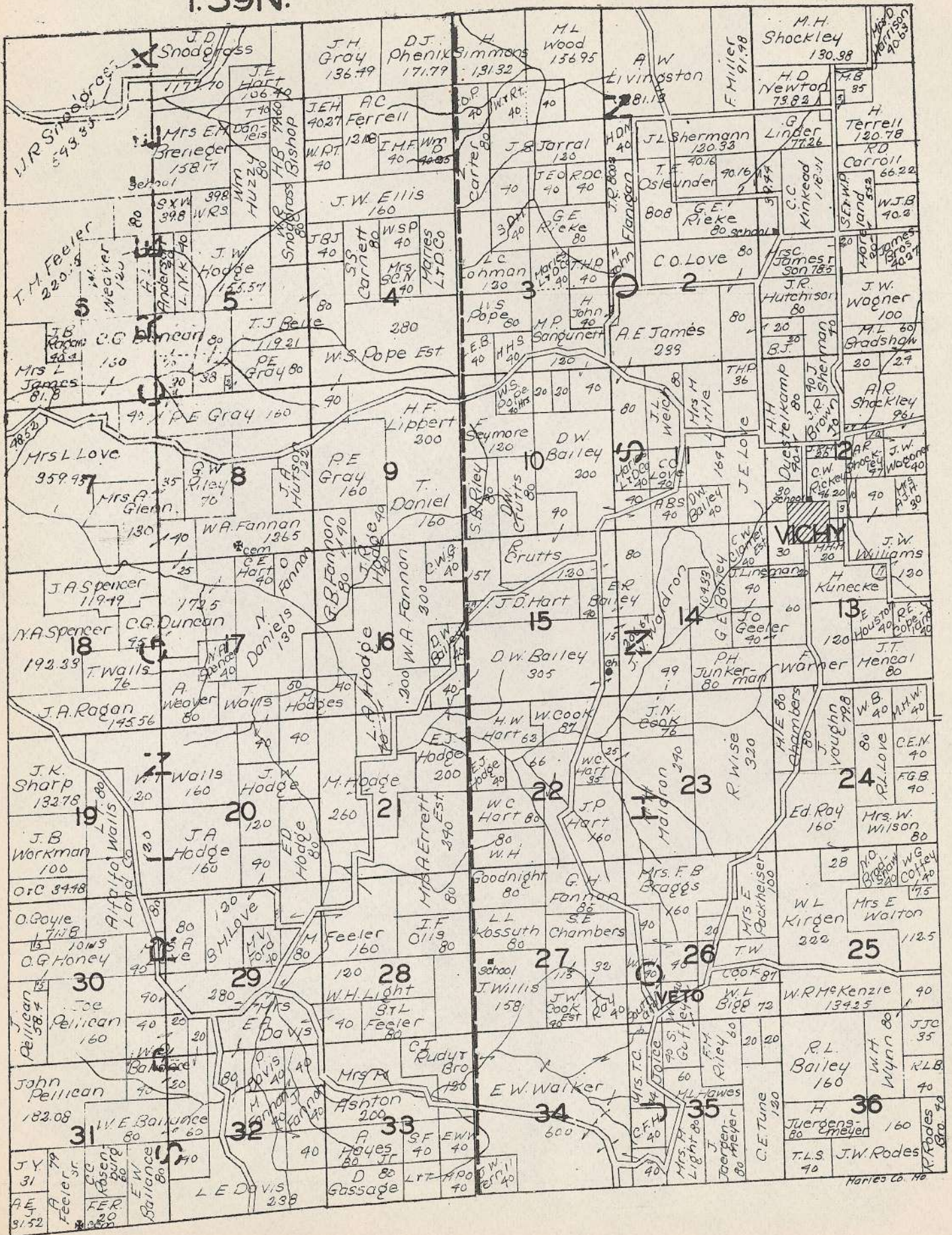
PART OF JEFFERSON

R.7W.



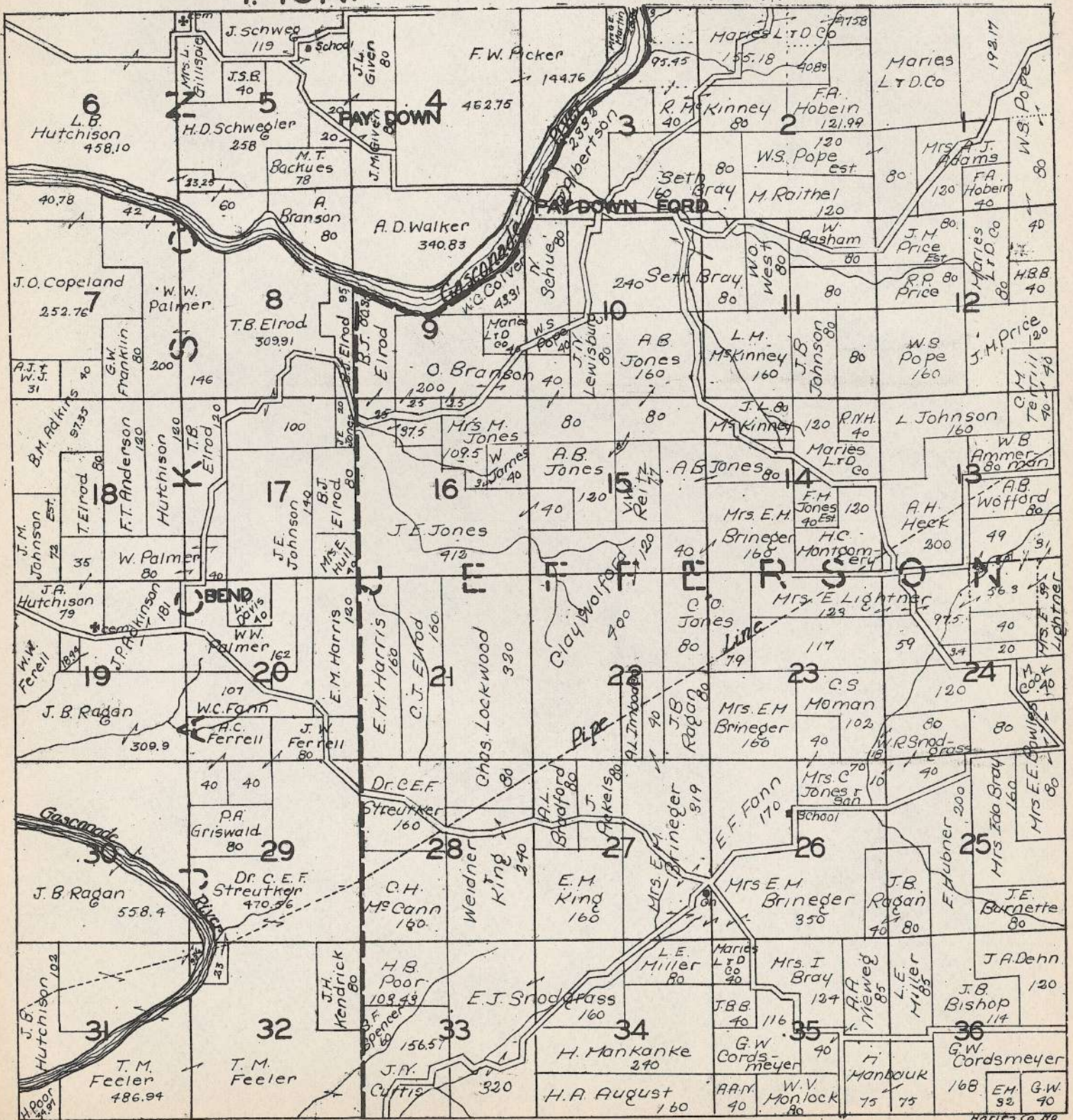
T. 39N.

R. 8W.



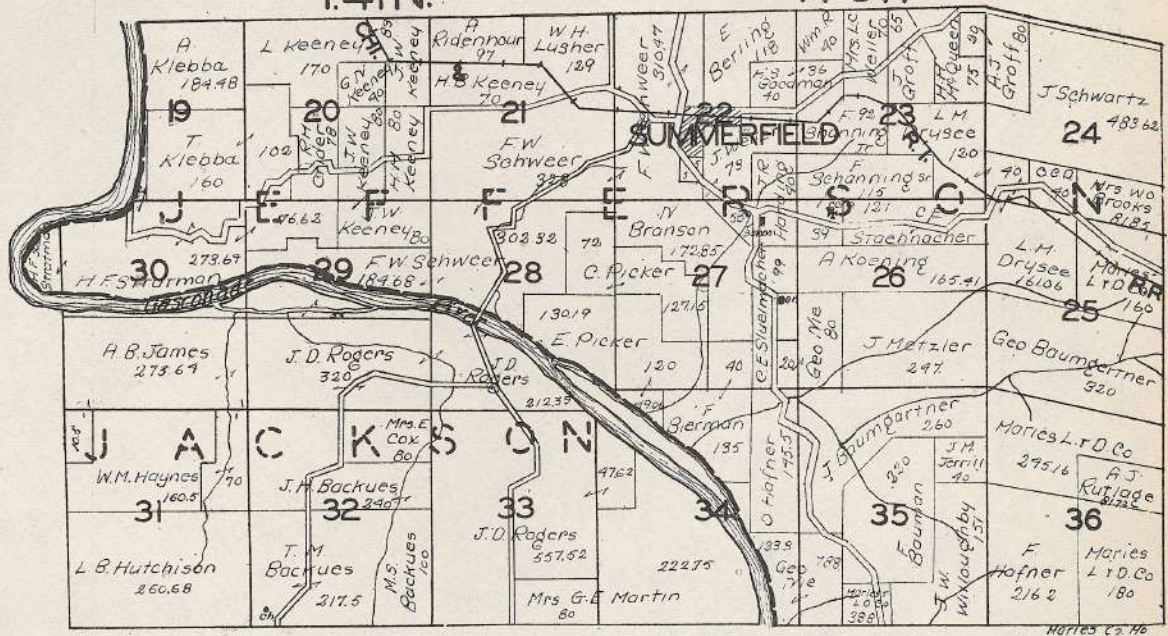
T.40N.

R.8W.



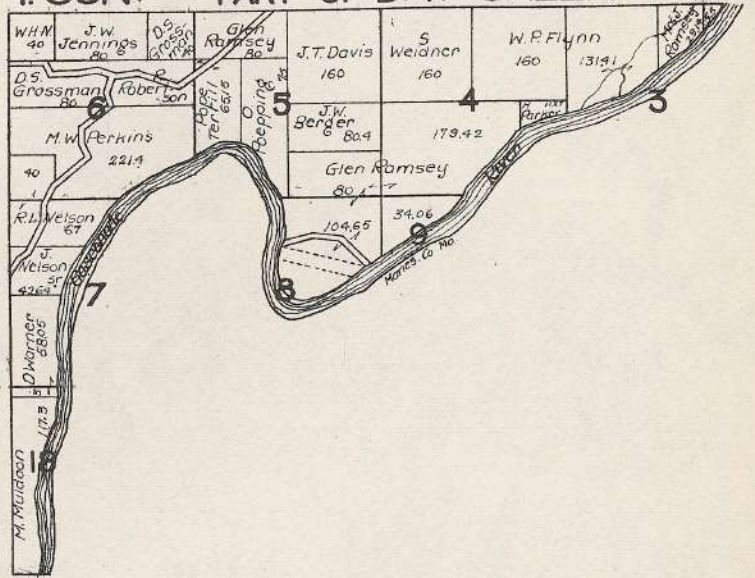
T.41N.

R.8W.



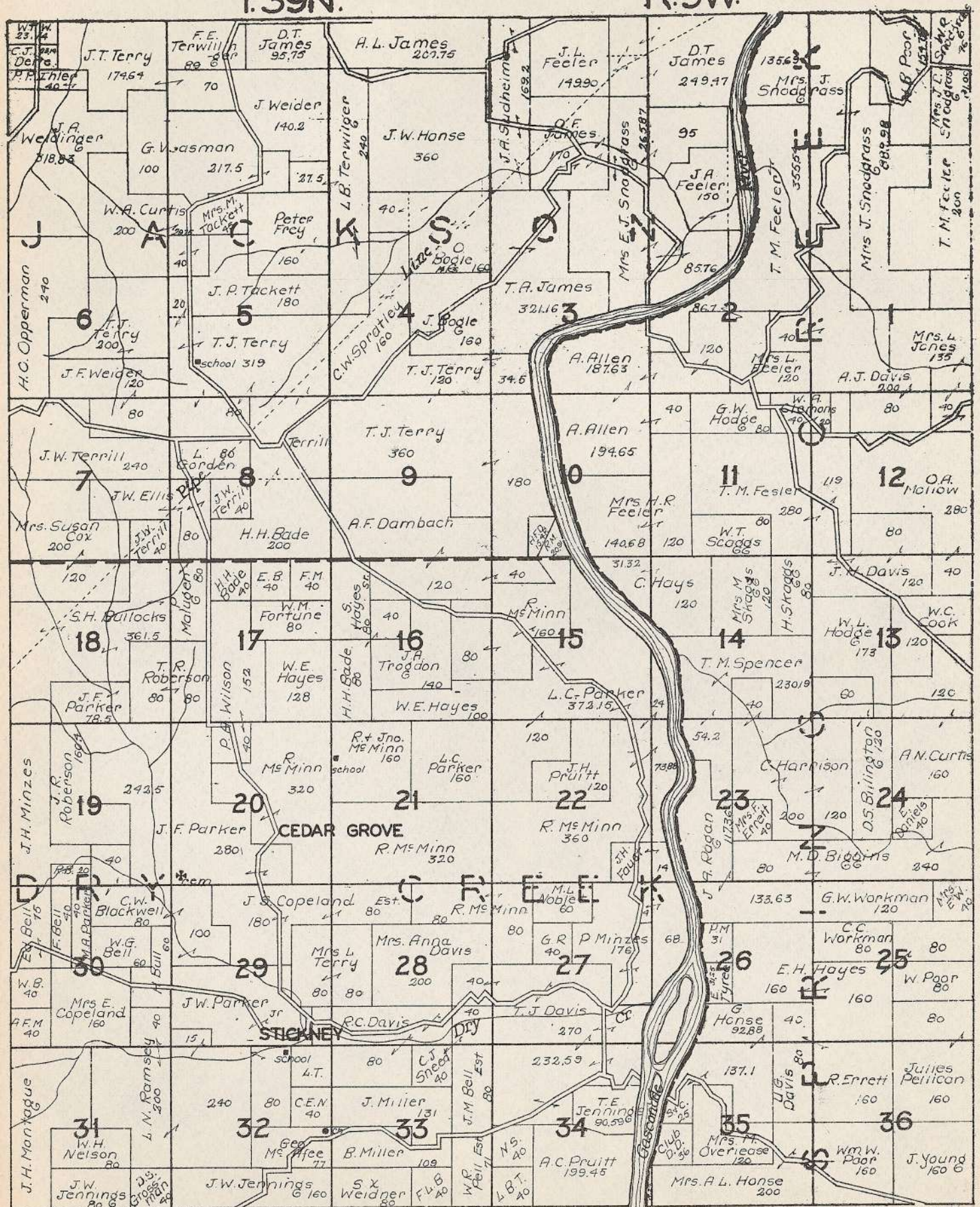
Maries Co. Ho

T. 38N. PART OF DRY CREEK R. 9W.



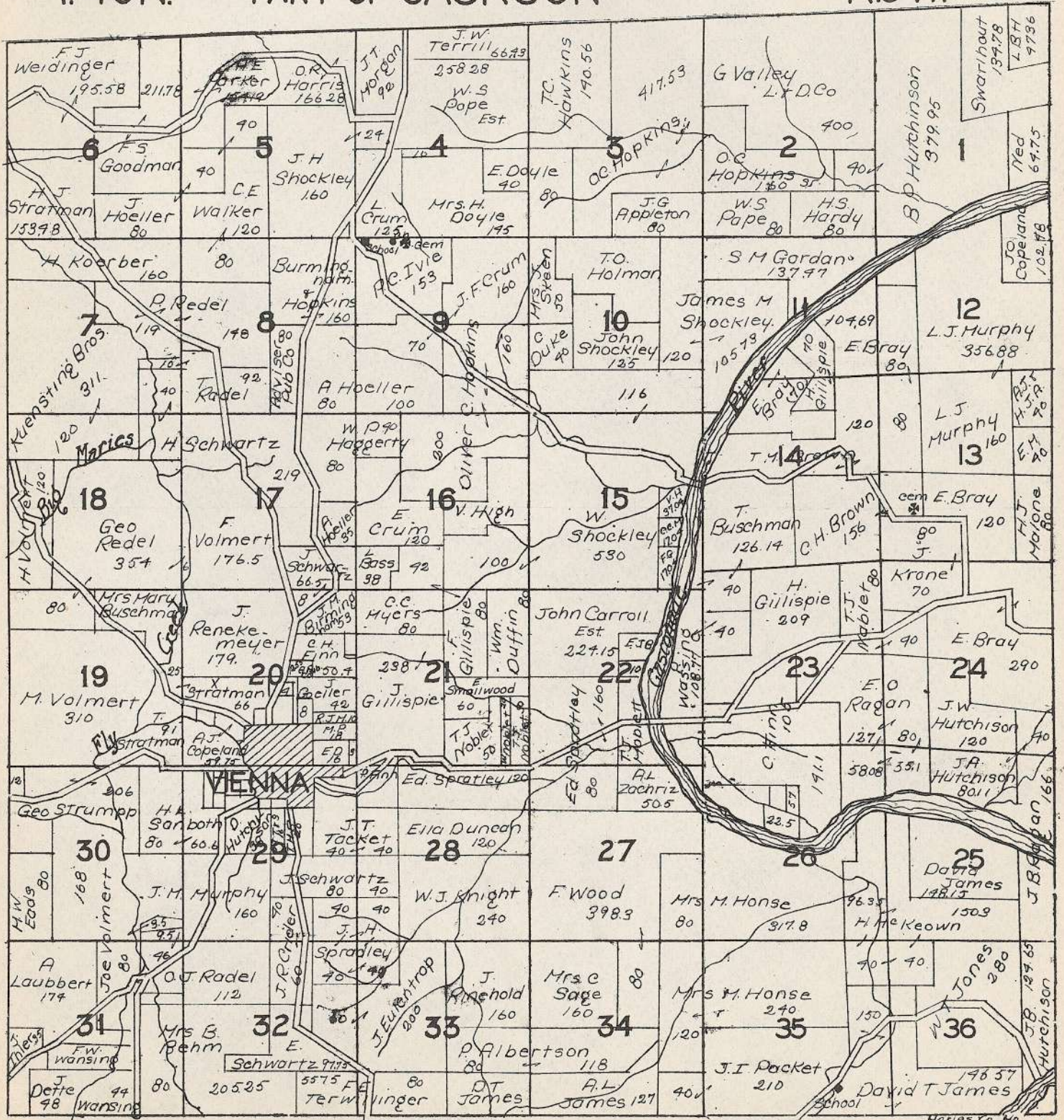
T.39N.

R.9W.



T.40N. PART OF JACKSON

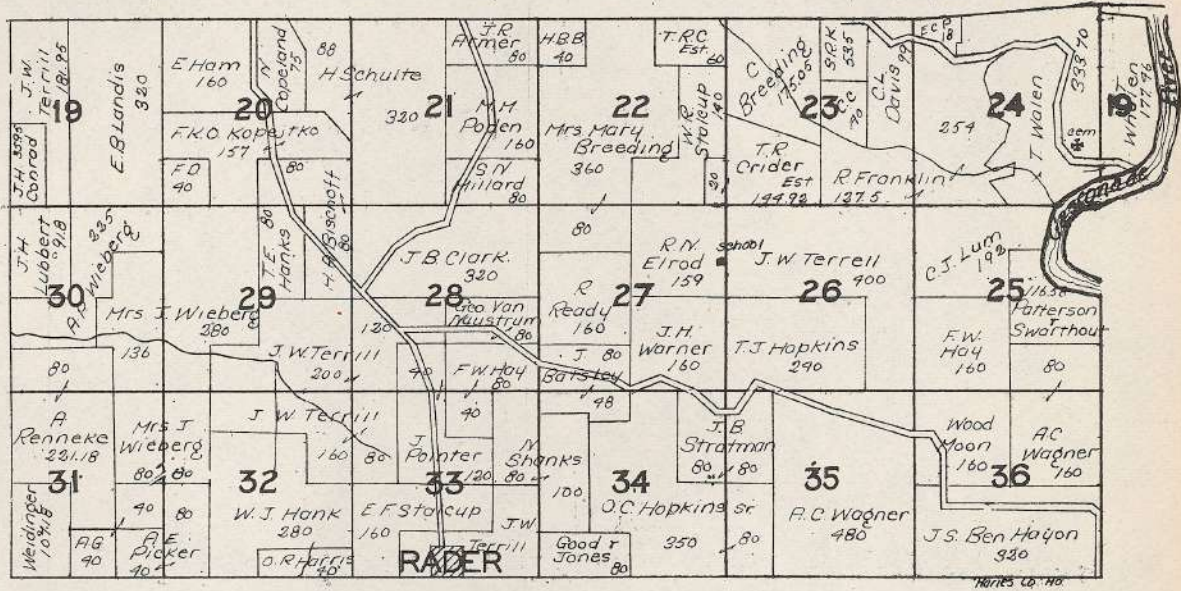
R.9W.



T.4IN.

PART OF JACKSON

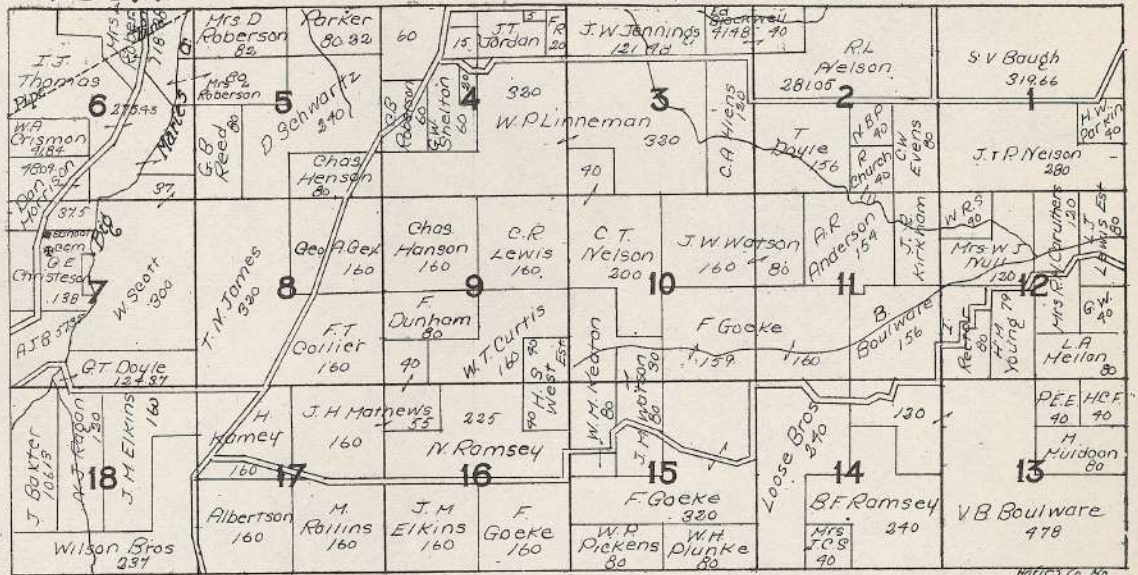
R.8&9W.



T.38N.

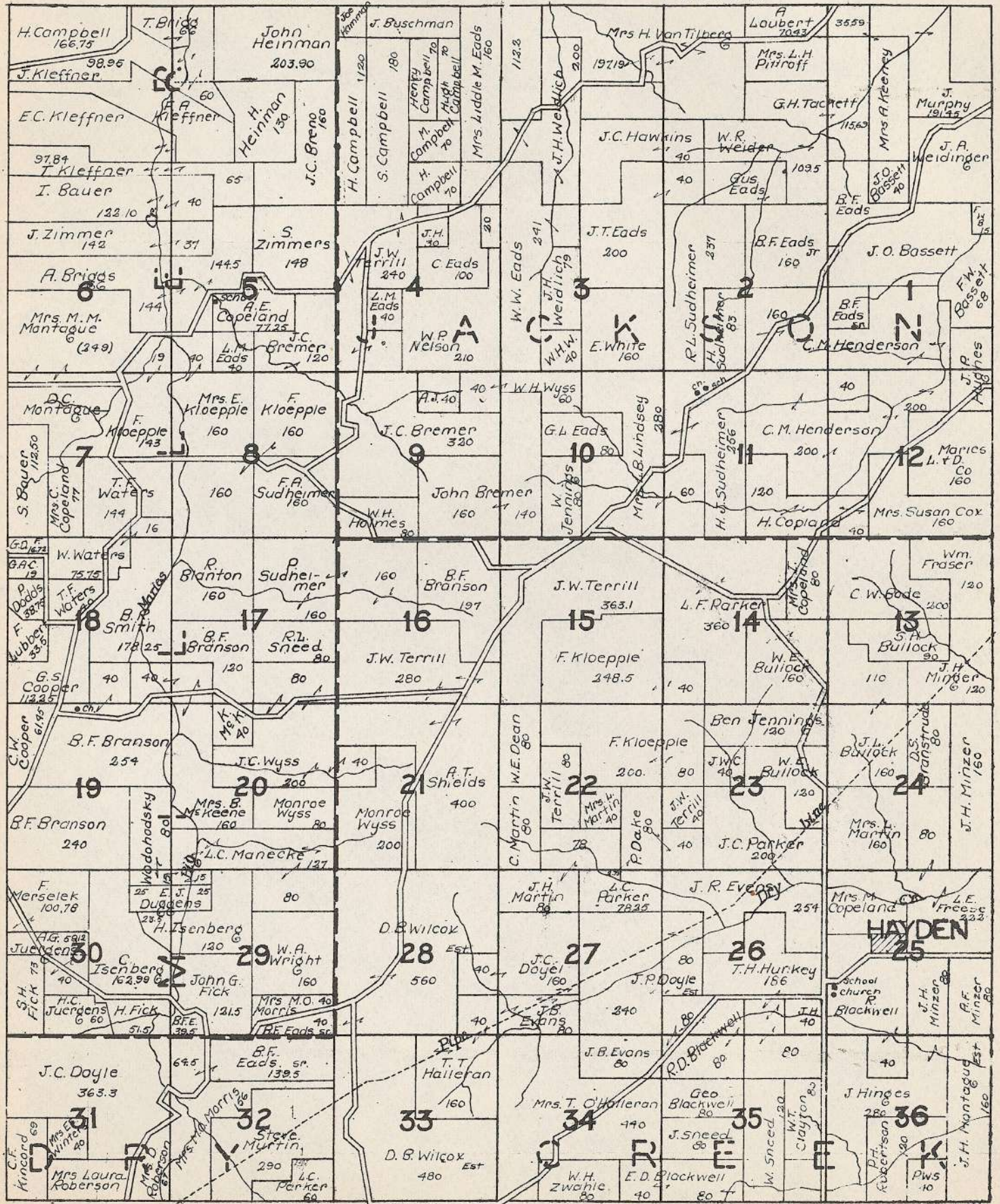
DRY CREEK

R.10W.



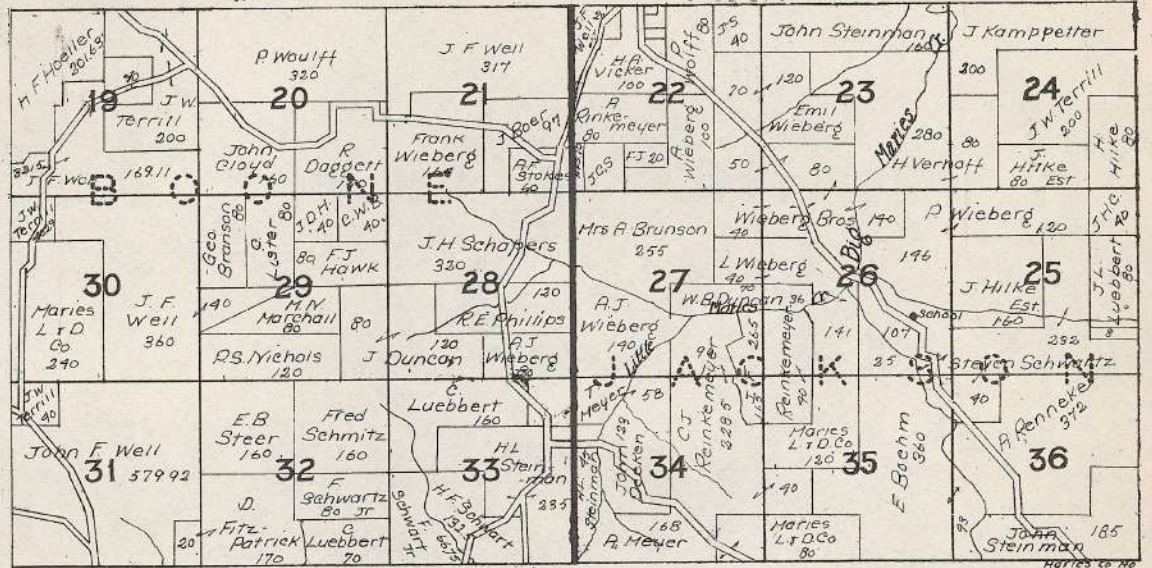
T.39N.

R.10W.



T.41 N.

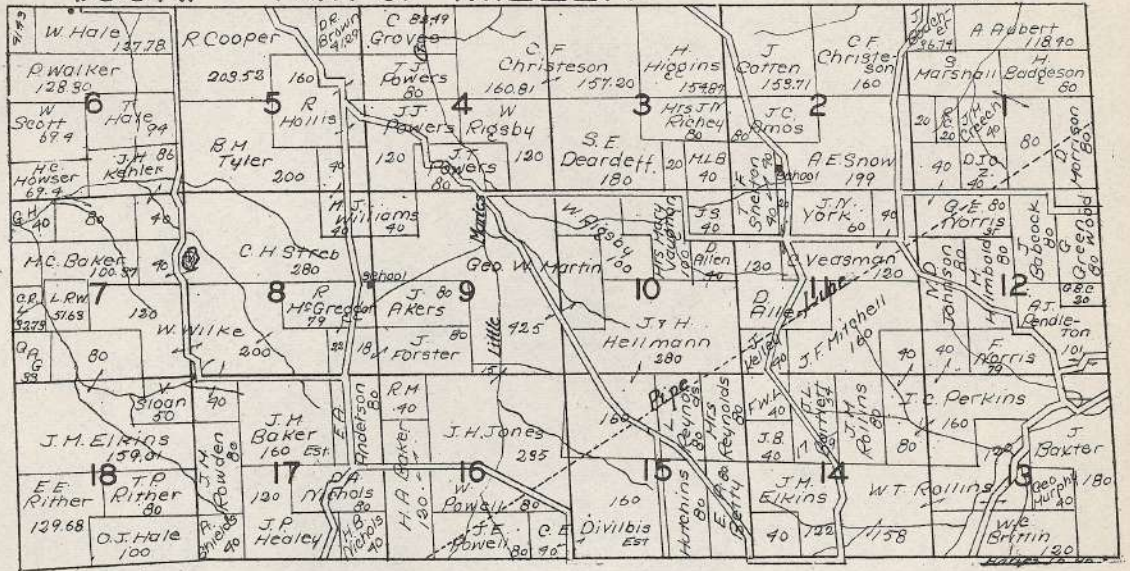
R.10 W.



T.38N.

PART OF MILLER

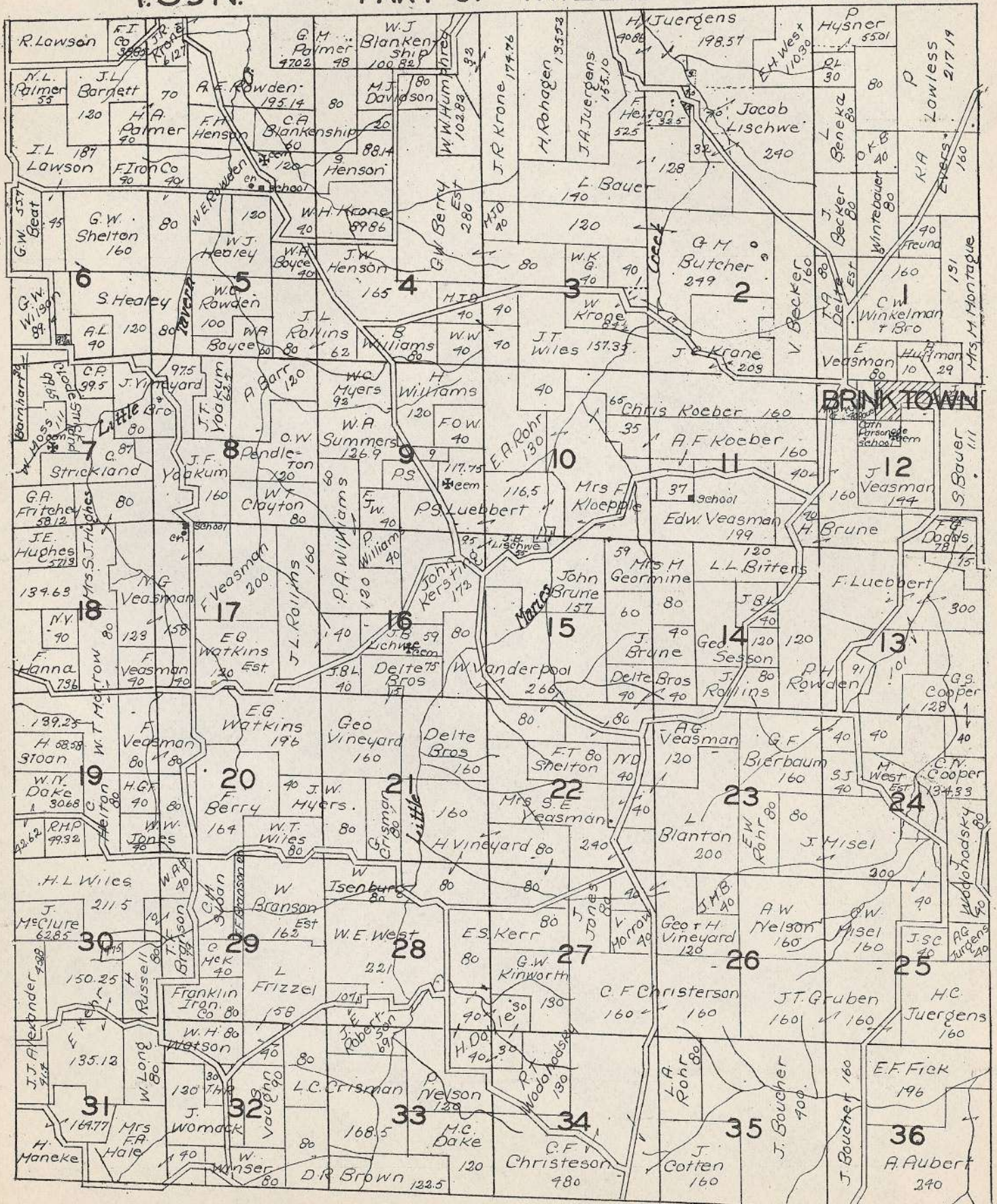
R.11W.



T.39N.

PART OF MILLER

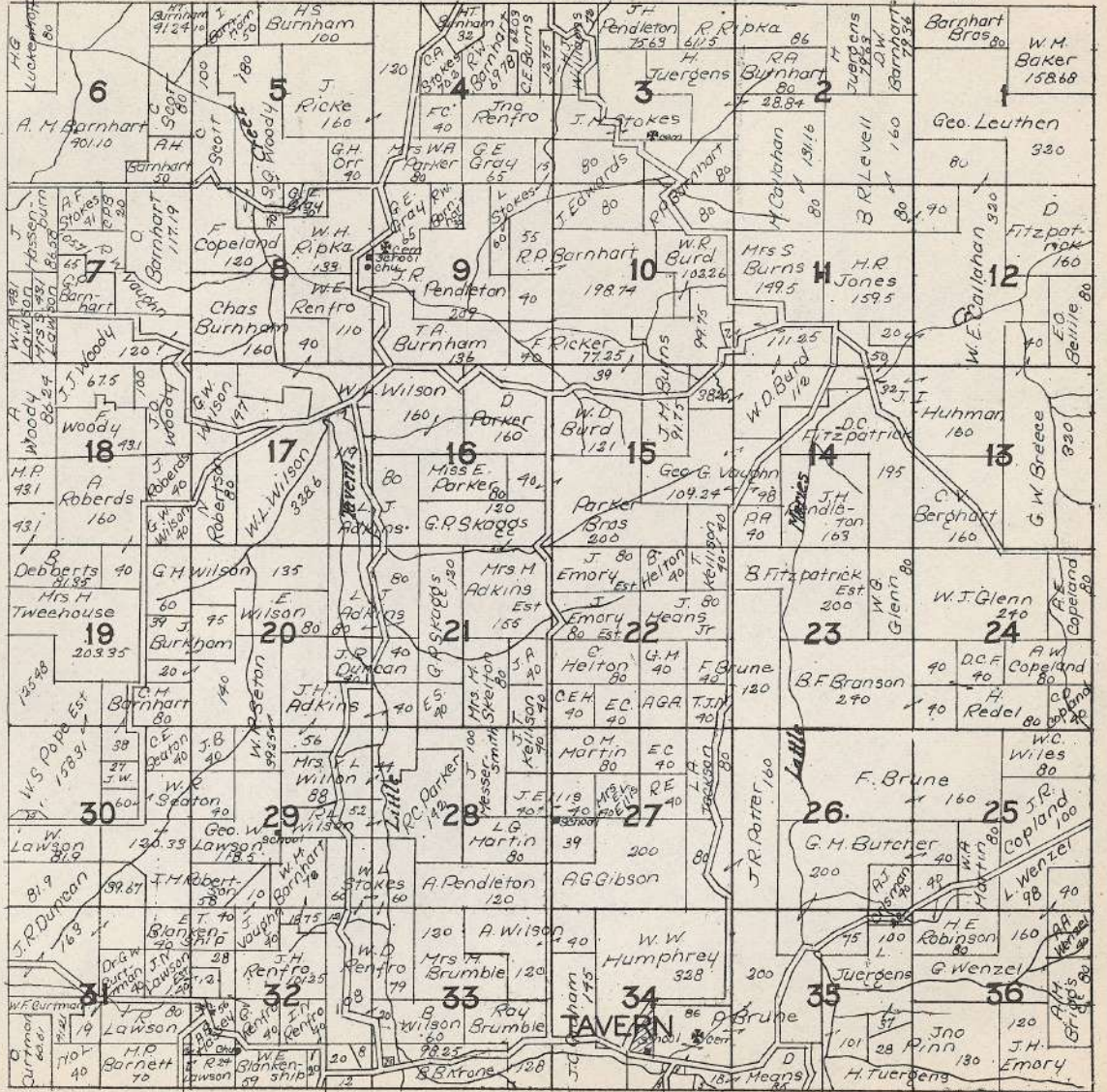
R.11W.



T.40N.

PART OF BOONE

R.11W.



HONES TO NO

