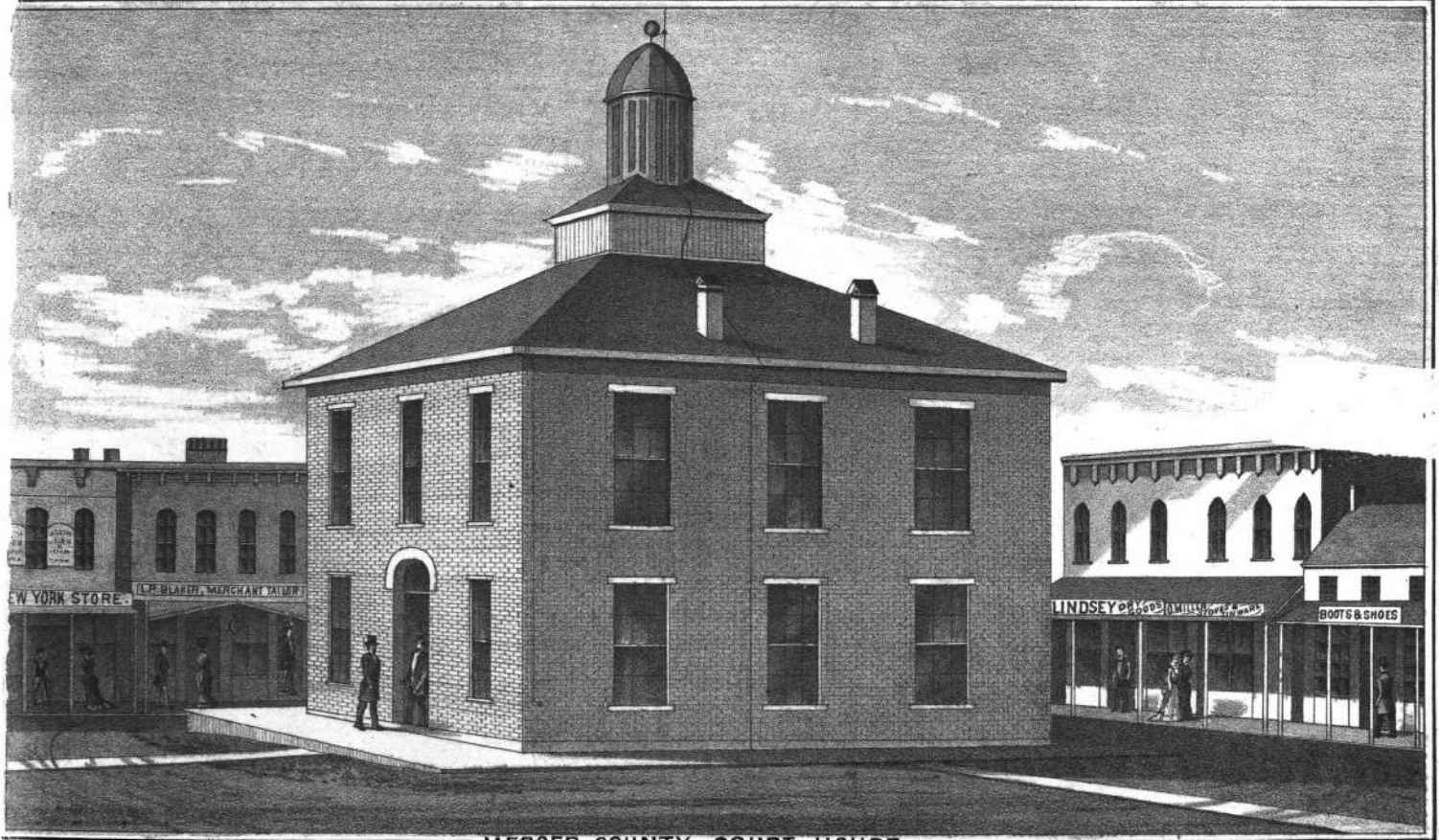


FARM OF ABNER GEORGE, 1 1/2 M. S. OF COTTONWOOD, MERCER CO. MO.



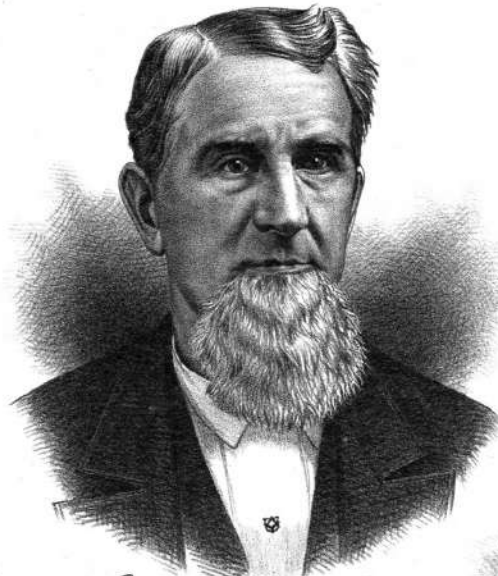
FARM OF ABNER GEORGE, 2 1/2 MILES N.W. OF COTTONWOOD, MERCER CO. MO.



MERCER COUNTY COURT HOUSE.  
AT PRINCETON, MO.



Respectfully  
D. A. Perryman



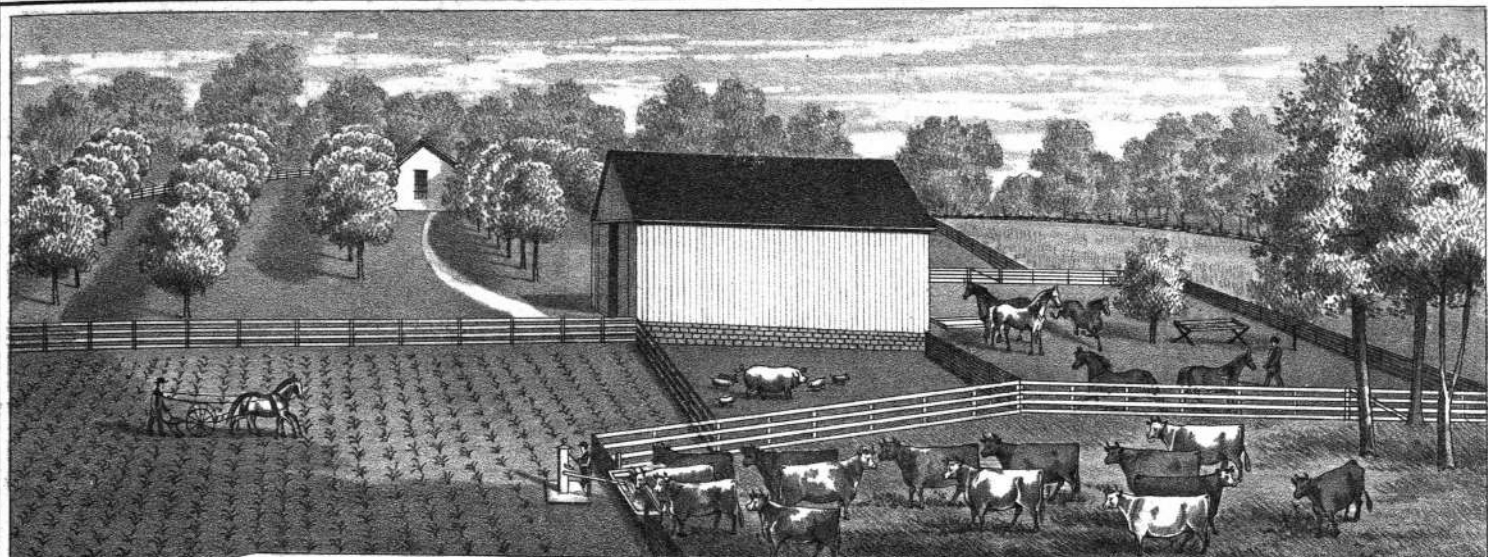
Very Respectfully  
J. C. W. Gindsey



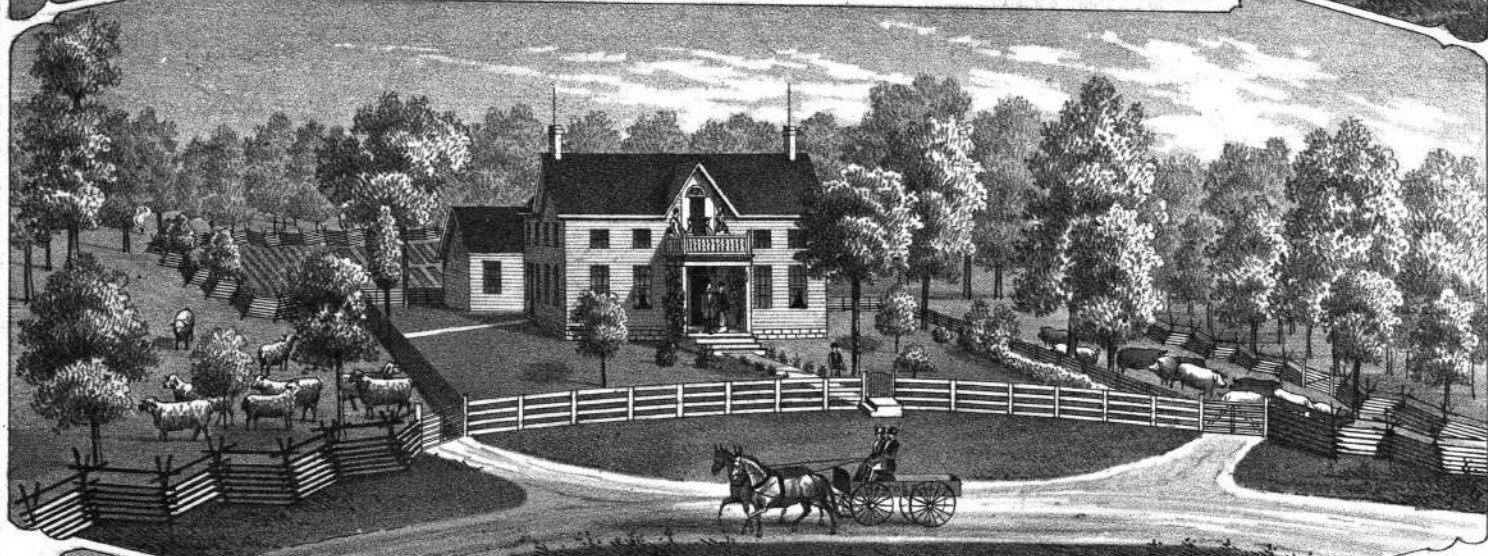
H. J. Alley



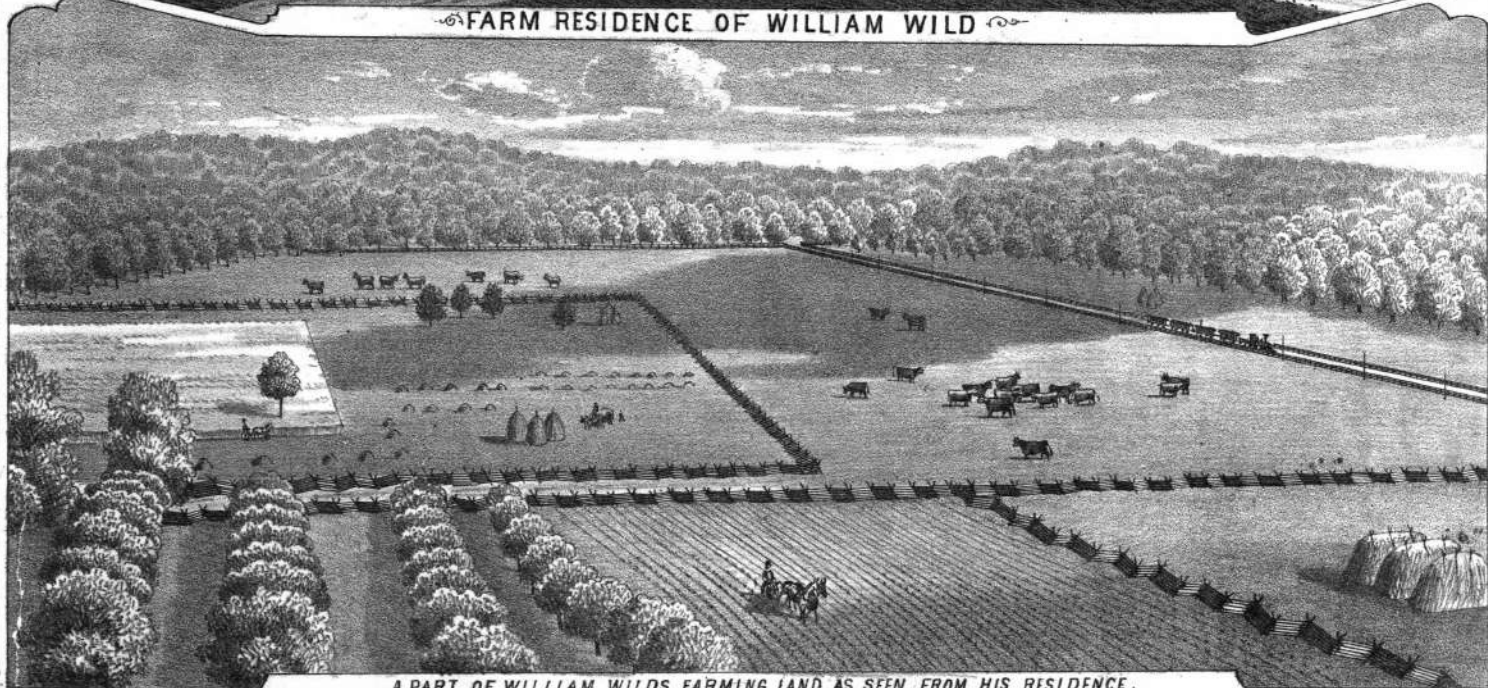
Very Respectfully  
Q. M. Long  
COUNTY CLERK.



ORCHARD AND BARN, A SCENE ON THE FARM OF WILLIAM WILD.



FARM RESIDENCE OF WILLIAM WILD



A PART OF WILLIAM WILDS FARMING LAND AS SEEN FROM HIS RESIDENCE.

VIEWS OF WILLIAM WILDS FARM, 2 1/2 MILES S. OF MILL GROVE, MERCER CO. MO.



*J. B. Moses, M.D.*



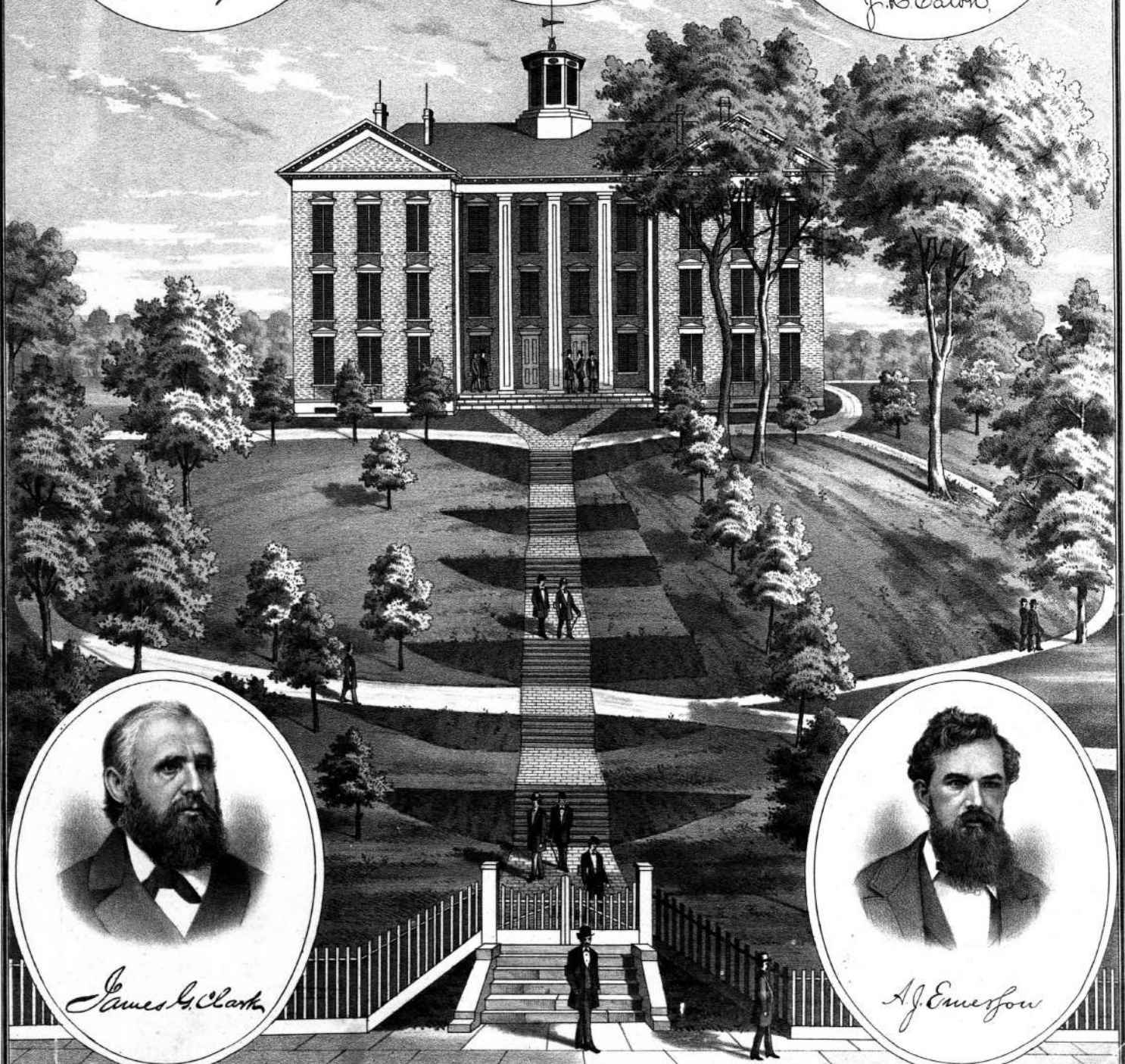
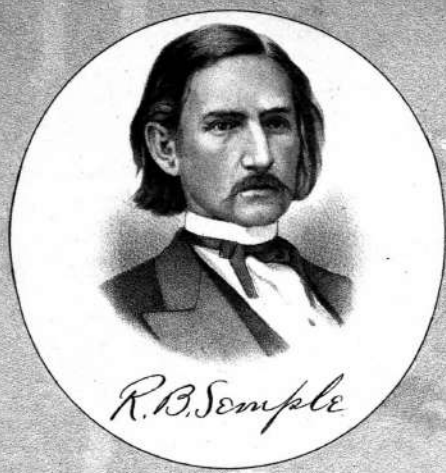
*J. E. Shipley, M.D.*  
RAVANNA, MO.



*J. H. Shelly*



*J. E. Lottaway, M.D.*  
RAVANNA, MO.



**VIEW OF WILLIAM JEWELL COLLEGE AND FACULTY.**  
LIBERTY, CLAY COUNTY, MD.