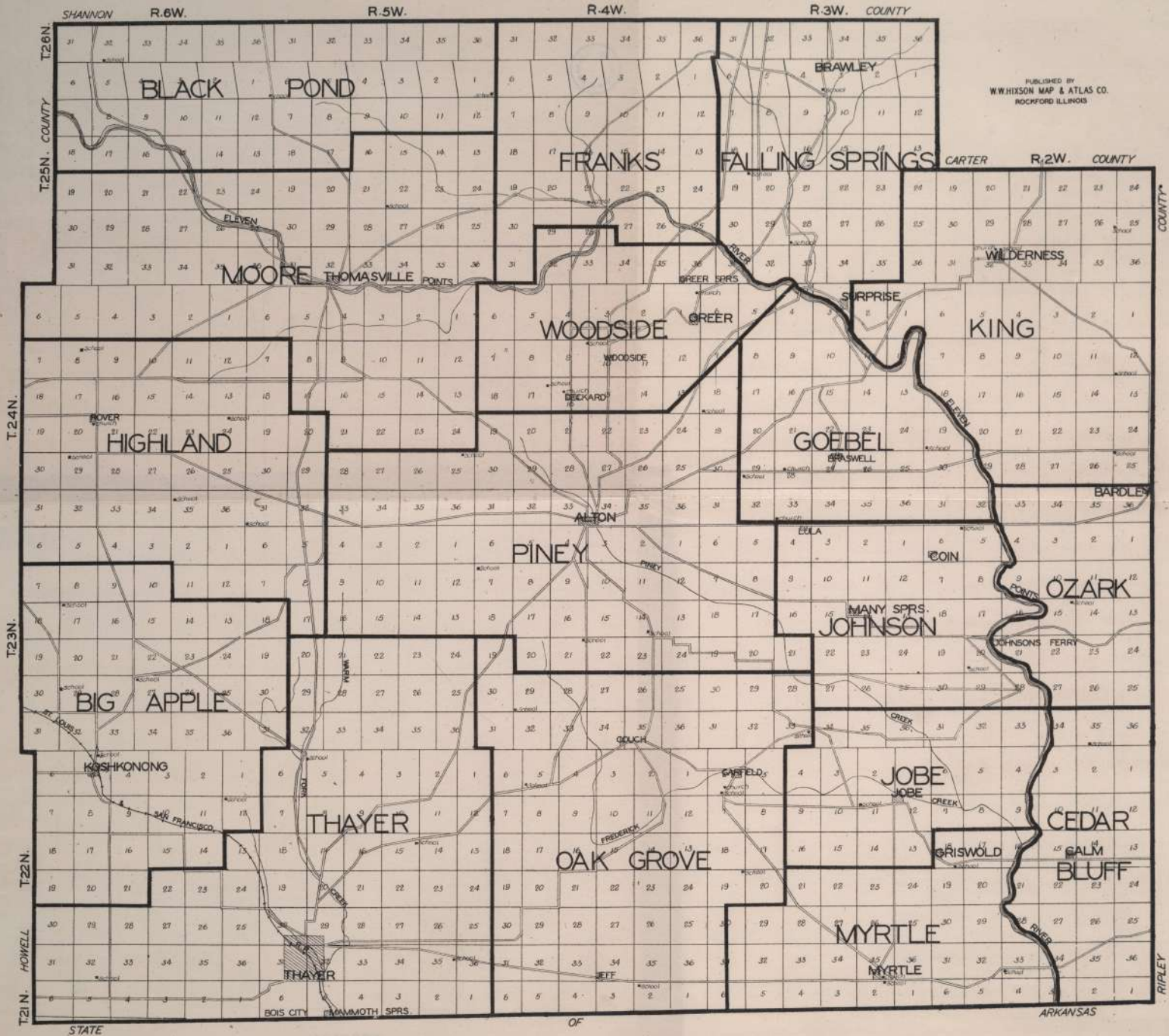
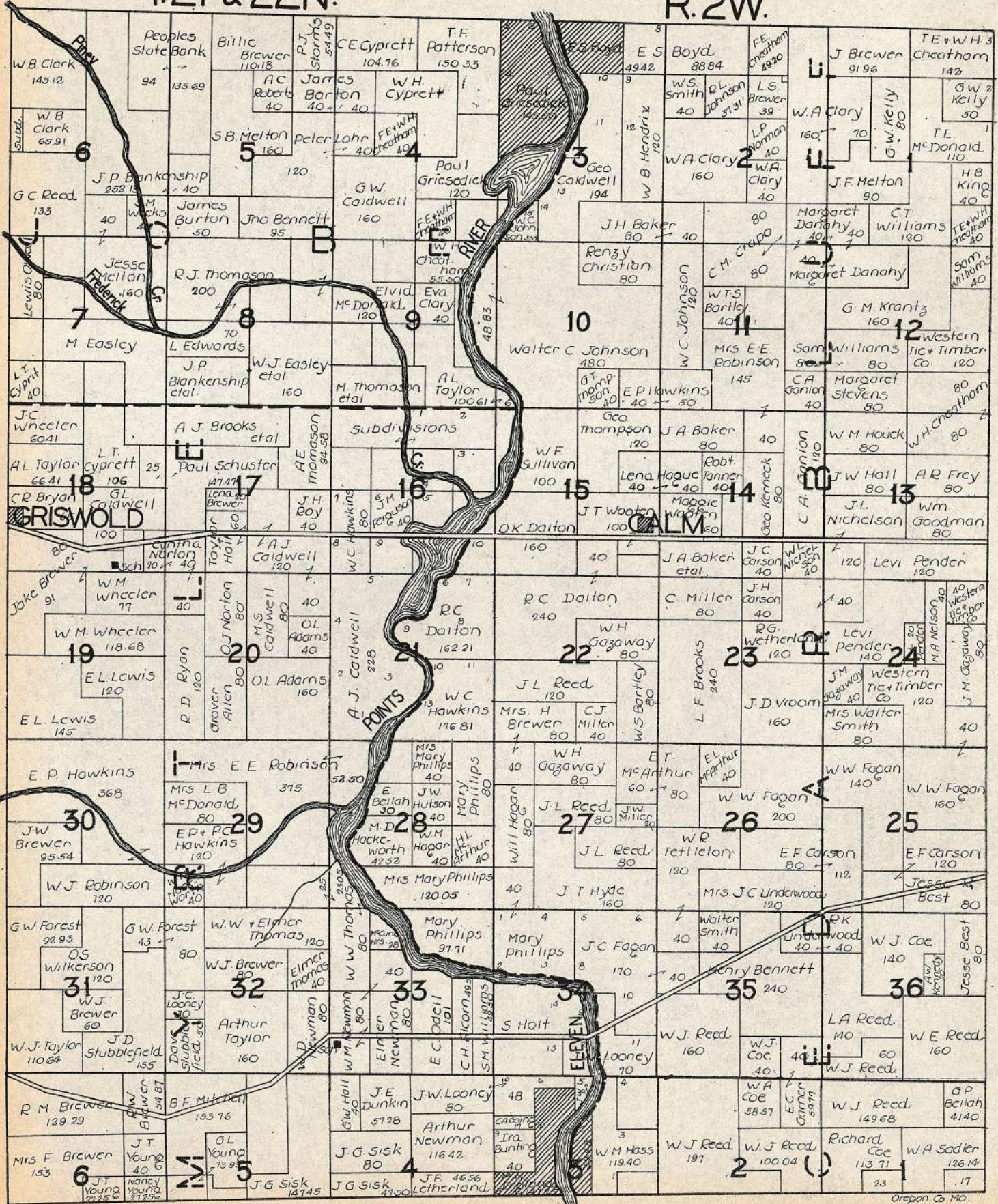


OREGON COUNTY MISSOURI



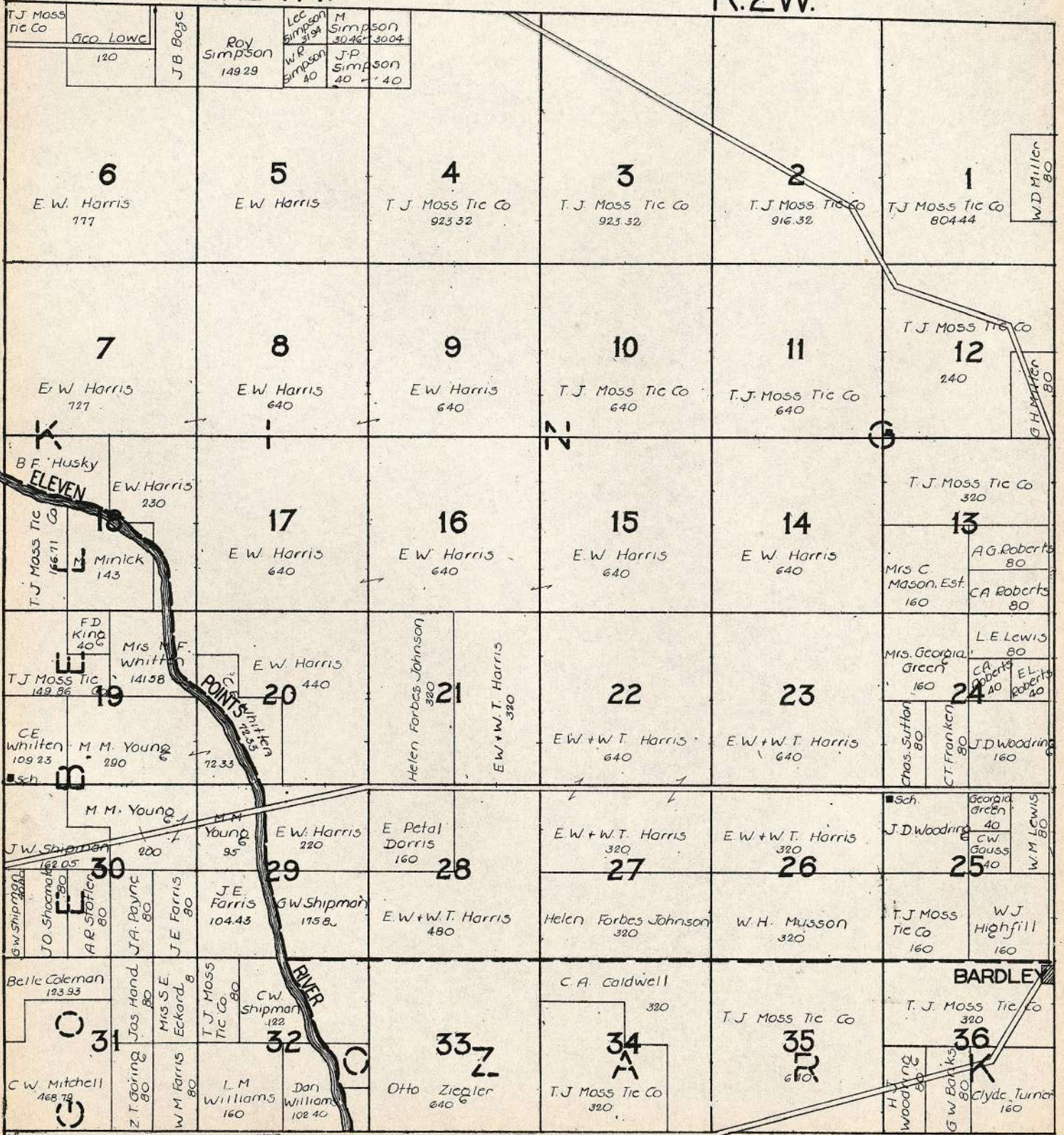
T.21 & 22N.

R.2W.



T.24N.

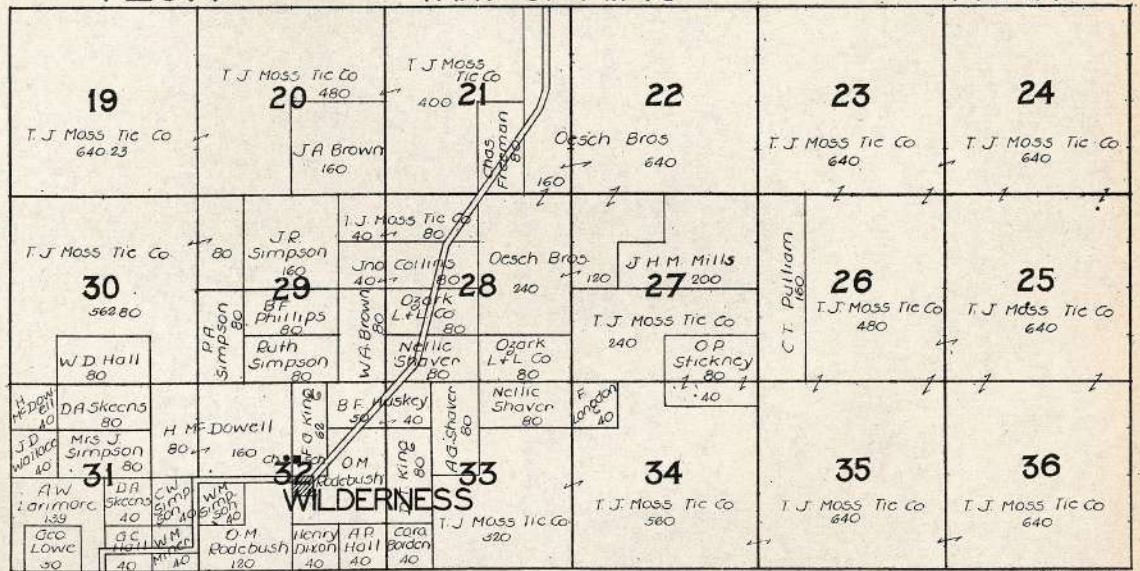
R.2W.



T.25N.

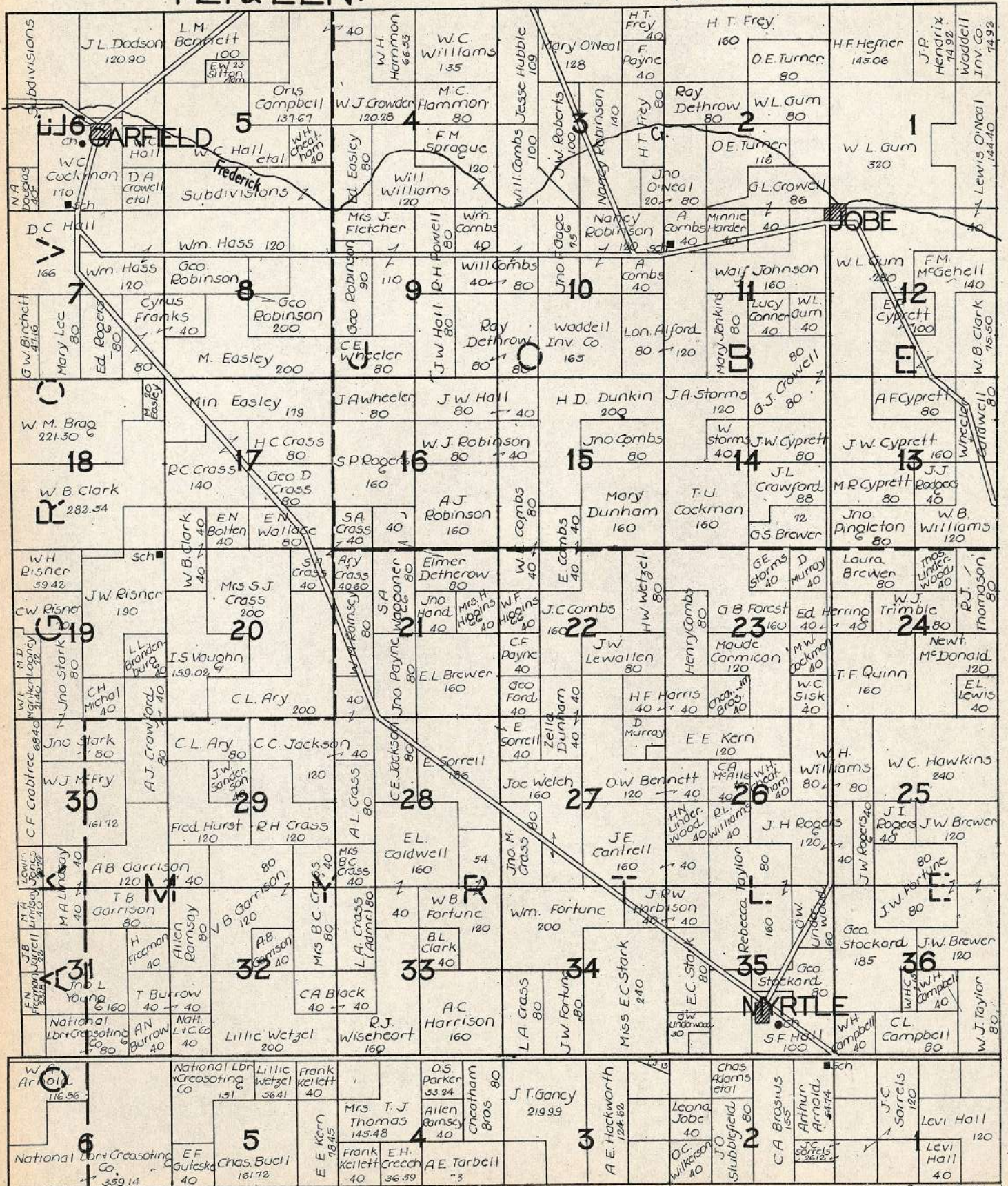
PART OF KING

R.2W.



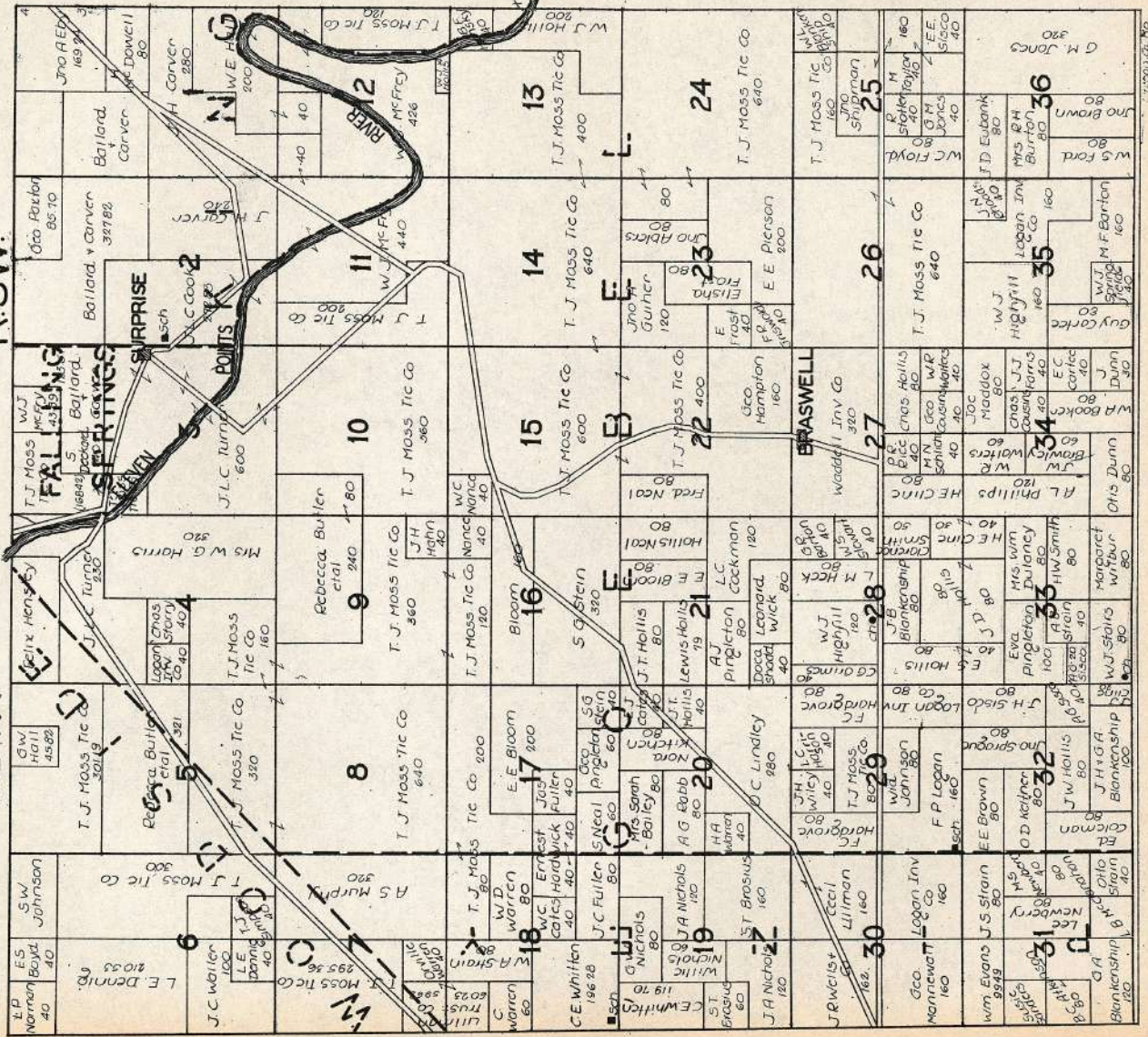
T.21 & 22N.

R.3W.



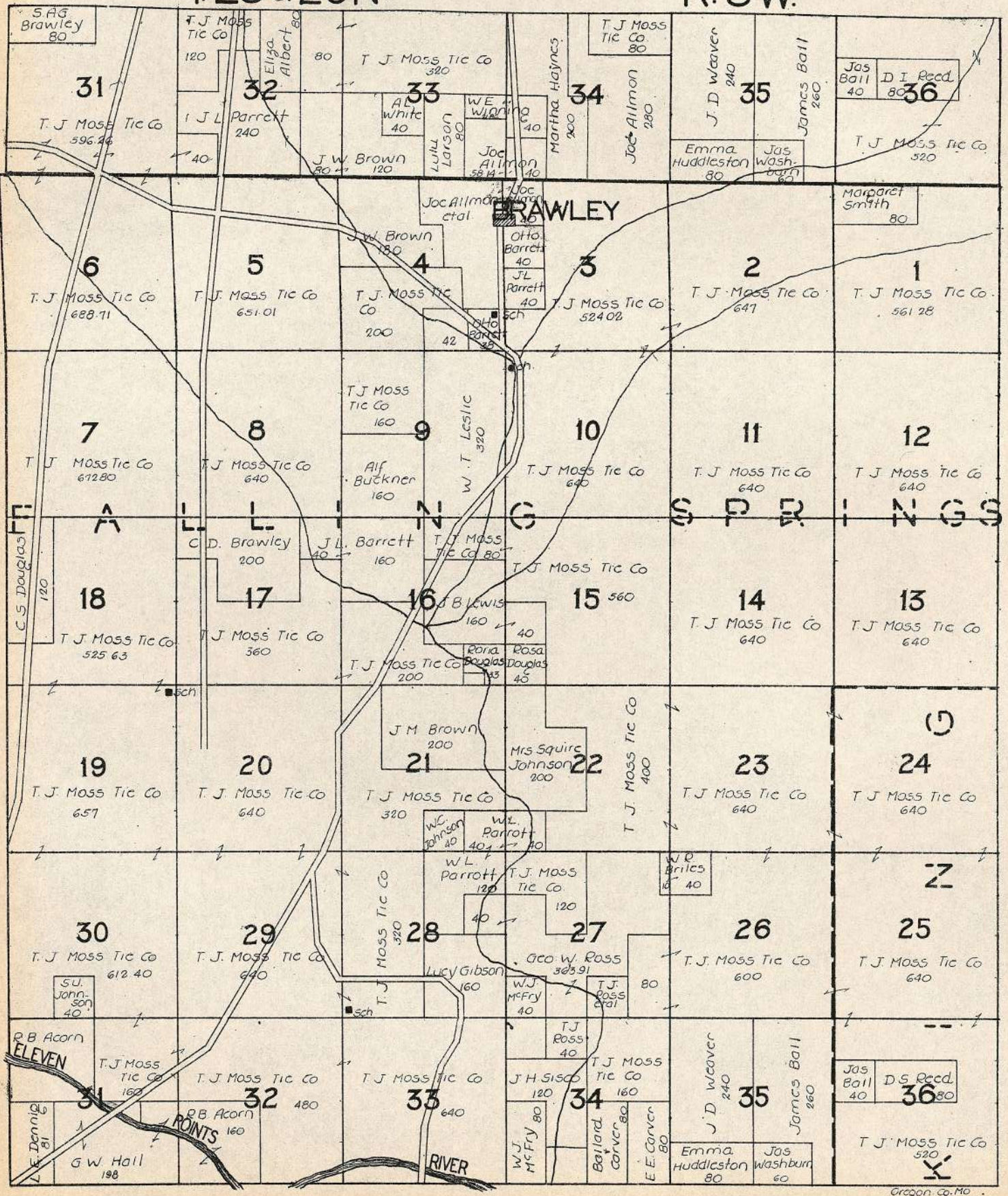
T.24N.

R.3W.



T.25 & 26N.

R.3W.



T.21&22N.

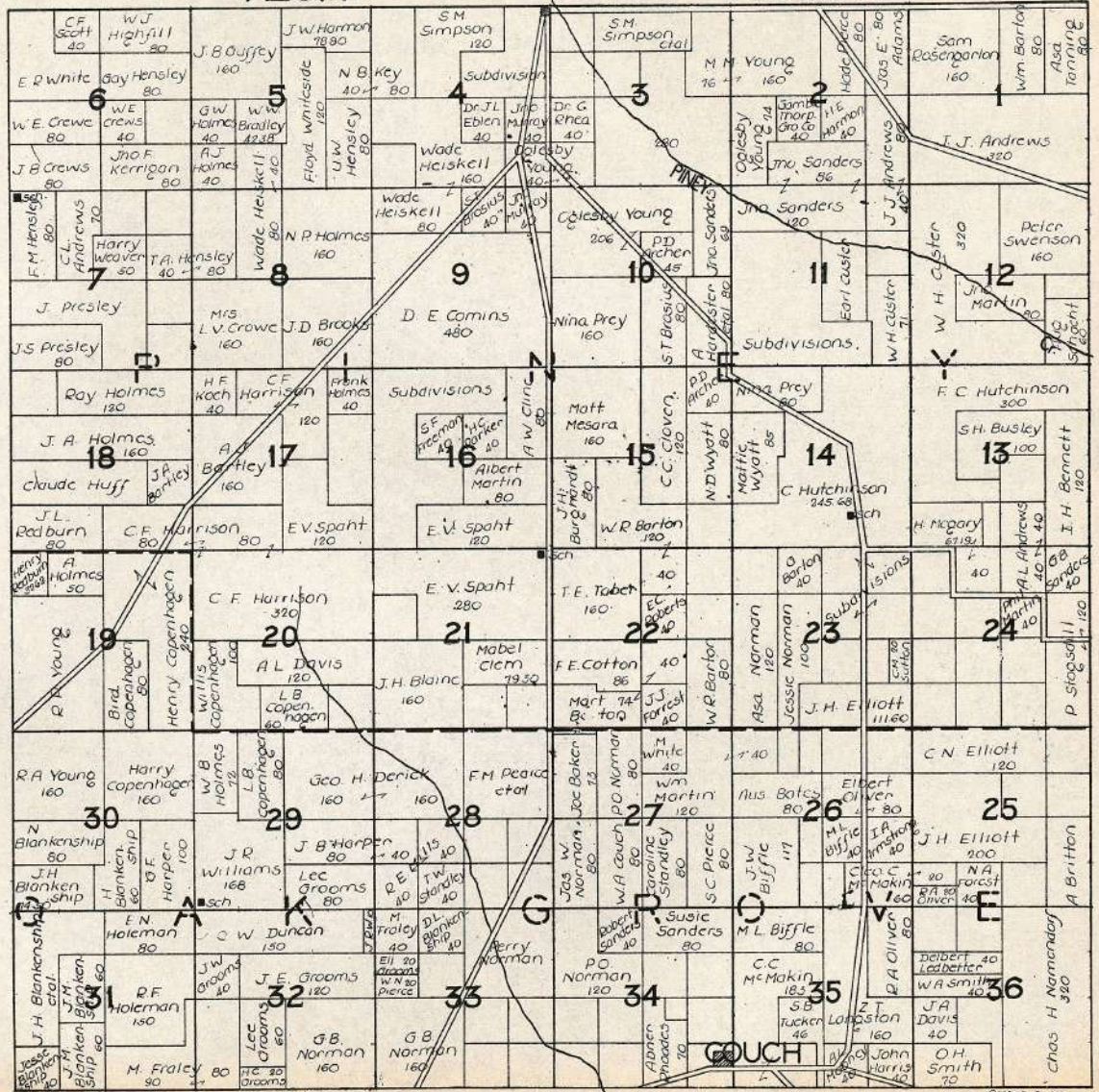
PART OF OAK GROVE

R.4W.

| | | | | | | | | | | | | | |
|-------------------------------|------------------------------|-------------------------|----------------------------|---------------------------|------------------------------|-------------------------|-------------------------|-------------------------|--------------------------------|----------------------------|----------------------------|------------------------------|---------------------------|
| S.J. Clark 132 | Dan Fraley 40 | J.W. Grooms 71.44 | H.C. Grooms 69.76 | Jas. Norman 34.44 → 50 | Jas. W. Norman 170 | S.A. Rhoads 74 → 80 | A.S. Rhoads 96 | CC. McMakin 149.50 | As. Mooney 32 | Jno. Ray 86.50 | AR & AW DAVIS 142.76 | | |
| August Vahvok 101.44 | J.H. Hoag 160 | Dan Fraley 45 | Mrs. E.V. Mills 81.50 | Mrs. G.W. Bonds 120 | Jas. W. Norman 79 | CR 160 | A.S. Rhoads 120 | J.M. Mills 42.26 | J.L. Crowell 80 | Mattie Crowell 160 | Mittie Jenkins 106 | O.H. Smith 209.10 | |
| August Fraley 137.18 | J.F. Dawson 80 | AL Harper 40 | S.H. Williams 40 → 40 | Homer Mills 43 | E. Pauli 80 → 40 | Jeff Strain 80 | J.T. Ames 40 | J.L. Eblen 40 | MC Harmon 160 | Jno. Heit 70 → 80 | OL Mallory 80 | NA Douglas 80 | |
| Carter Edwards 95.30 | W.H. Chatham 80 | W.B. Jenkins 82.21 | AA Payne 161 | J.T. Ames 217.50 | J.T. Ames 200 | RT. Berry 80 | Fred Pauli 93 | J.T. East 82.11 | M. Easley 40 | J.A. Payne 100 | Ed. Cotton 80 | 12 S.A. Douglas 191.88 | |
| Frank Wallis 45.81 | EV Bonds 40 | Walter Mills 40 → 40 | J.S. Summers 40 | C.D. Pring 77.65 | CH Pring 77.65 | J.T. Ames 80 | J.T. East 82.11 | M. Easley 40 | RT. Hoyt 40 | J.C. Roberts 160 | G.W. Birchett 164.05 | Jno. Bryant 80 | |
| G.M. Strubic 44.58 → 45.09 | HW Williams 120 | CC Green 40 | Fred Pauli 80 | J.T. Ames 200 | W.L. James 80 | J.D. Choe 74 | Fred Pauli 93 | M. Easley 40 | RT. Hoyt 40 | J.C. Roberts 160 | E.S. Utley 160 | Jno. Bryant 80 | |
| FM Mason 44.54 | Mrs. W. Schlotter 40 | WA Pring 80 | M.B. Childers 80 | W.L. James 80 | J.D. Choe 74 | Fred Pauli 93 | Fred Pauli 93 | M. Easley 40 | RT. Hoyt 40 | J.C. Roberts 160 | E.S. Utley 160 | Jno. Bryant 80 | |
| Jno. Gregory 42.16 | Geo. Warren 40 | Frank Morrow 40 → 40 | Jno. F. Pauli 80 | Fred Pauli 40 | Homer James 160 | Lewis Young 80 | W.W. Walder 80 | J.L. Hayes 80 | RT. Hoyt 40 | J.C. Roberts 160 | E.S. Utley 160 | Jno. Bryant 80 | |
| Joseph Freidman 77.79 | Mrs. W. Schlotter 40 | J.H. Crochel 40 → 40 | W.W. Sanridge 80 | Fred Pauli 40 | J.S. Basford 40 | Homer Bone 40 | J.N. Sanridge 40 | Carl Wray 40 | H. Taylor 40 → 40 | HL Custer 80 | M.T. Hayes 80 | Jno. Taylor 40 | Ralph Hoyt 40 |
| 19 Oris Weimer 279.14 | Clara Hubbard 40 → 119.22 | Chas. E. Fuson 80 | Fred Pauli 120 | J.N. Arnold 120 | G.B. Custer 120 | Barbara Lewallen 200 | Willard Eisinger 40 | M.D. Looney 120 | 13 E.S. Utley 160 | RT. Hoyt 40 | H.F. Eisinger 80 | Wayne Corley 40 | Jno. Taylor 40 |
| Mrs. W. Schlotter 40 | Orlando Martin 117.41 | Fred Pauli 156.53 | Anna Liza Perrigo 160 | T.H. Honeycutt 40 → 80 | A.H. Ary 80 → 80 | D.F. Ary 80 → 40 | Jno. Payne 40 | W.E. Marker 80 | 20 Orlando Martin 117.41 | Fred Pauli 156.53 | Anna Liza Perrigo 160 | W.W. Russell 40 | A.M. Hollis 80 |
| H. Hoffman 74 | JA Wright 120 | Leander Martin 80 | Anna Liza Perrigo 40 | W.W. Russell 40 | A.M. Hollis 80 | CA Steel 80 | Ralph T. Hoyt 80 | Bertha Allen 40 → 40 | CE Contrell 80 | 30 JA Wright 120 | Mrs. W. Schlotter 120 | J.N. Sanridge 240 | G.W. Sanridge 80 |
| CC Russell 37.03 | W.T. Dedmon 160 | CL Staples 80 | J.L. Langley 120 | T.B. Gardner 80 | Henry Albright 240 → 80 | HC Hollis 160 | Ralph Hoyt 84.93 | D.H. Jones 40 → 40 | J.C. Contrell 80 | 29 J.N. Sanridge 240 | W.T. Dedmon 160 | J.L. Langley 120 | IL Young 120 |
| Jno. N. Arnold 154 | E.H. Arnold 70 → 50 | Mocks 120 | Emily Neinschwanden 160 | J.L. Langley 160 | Logan Inv 80 | J.M. Austin 40 | OS Webber 160 | Bertha Dallman 120 | OS Webber 121.26 | CM Ary 80 | EC Stark 80 | J.S. Stark 139 | MA Lindsay 40 |
| EA Wells 38 | Henry Farris 80 | EV Farris 40 | Henry Neinschwanden 80 | R.G. Beatty 80 | R.G. Beatty 80 | J.M. Taylor 80 | Henry Williams 40 | E. Honeycutt 100 | Jno. Young 40 | 31 EA Wells 38 | Henry Farris 80 | EV Farris 40 | Henry Neinschwanden 80 |
| WJ Warren 40 | Bessie Postle 40 | Mrs. M.L. Lowden 40 | IL Young 75 | W.J. Young 55 | H.F. Young 25 → 80 | R.G. Beatty 120 | Mrs. Julius Ivan 120 | I.H. Arnold 80 → 80 | Hiram Honeycutt 120 | 32 Henry Farris 80 | Bessie Postle 40 | Mrs. M.L. Lowden 40 | IL Young 75 |
| CC Smith 44.50 | WJ Warren 44.14 | IL Young 46.58 | M.V. Young 40 | WJ Young 91.70 | H.F. Young 46.84 → 138.48 | R.G. Beatty 185.26 | Chas. Ivan 80 | H.G. Webber 44 → 51 | E. Honeycutt 80 | 33 Henry Farris 80 | WJ Warren 40 | Bessie Postle 40 | Mrs. M.L. Lowden 40 |
| Jasper Crowley 80 | Ernest Sausser 121.08 | G.W. Baatty 133.42 | Robt. Hicks 38.50 | G.W. Denton 40 | 90.82 | W.L. Fisher 105.42 | Fred Clausen 102.16 | Matt Stradel 202.97 | M. Cotham 80 | 34 Henry Farris 80 | Ernest Sausser 121.08 | G.W. Baatty 133.42 | Robt. Hicks 38.50 |
| Jno. W. Williams 99.32 | RB Young 110.88 | EA Sausser 112.50 | W.L. Fisher 105.42 | Fred Clausen 102.16 | 54.56 | Fred Clausen 63.71 | Fred Clausen 53.29 | Kester Siles 166.95 | WA Kellitt 104.56 | 35 Henry Farris 80 | EA Sausser 112.50 | W.L. Fisher 105.42 | Fred Clausen 102.16 |
| CC Smith 44.50 | WJ Warren 44.14 | IL Young 46.58 | M.V. Young 40 | WJ Young 91.70 | H.F. Young 46.84 → 138.48 | R.G. Beatty 185.26 | Chas. Ivan 80 | H.G. Webber 44 → 51 | E. Honeycutt 80 | 36 Henry Farris 80 | WJ Warren 40 | Bessie Postle 40 | Mrs. M.L. Lowden 40 |
| Jasper Crowley 80 | Ernest Sausser 121.08 | G.W. Baatty 133.42 | Robt. Hicks 38.50 | G.W. Denton 40 | 90.82 | W.L. Fisher 105.42 | Fred Clausen 102.16 | Matt Stradel 202.97 | M. Cotham 80 | 36 Henry Farris 80 | Ernest Sausser 121.08 | G.W. Baatty 133.42 | Robt. Hicks 38.50 |
| Jno. W. Williams 99.32 | RB Young 110.88 | EA Sausser 112.50 | W.L. Fisher 105.42 | Fred Clausen 102.16 | 54.56 | Fred Clausen 63.71 | Fred Clausen 53.29 | Kester Siles 166.95 | WA Kellitt 104.56 | 36 Henry Farris 80 | EA Sausser 112.50 | W.L. Fisher 105.42 | Fred Clausen 102.16 |

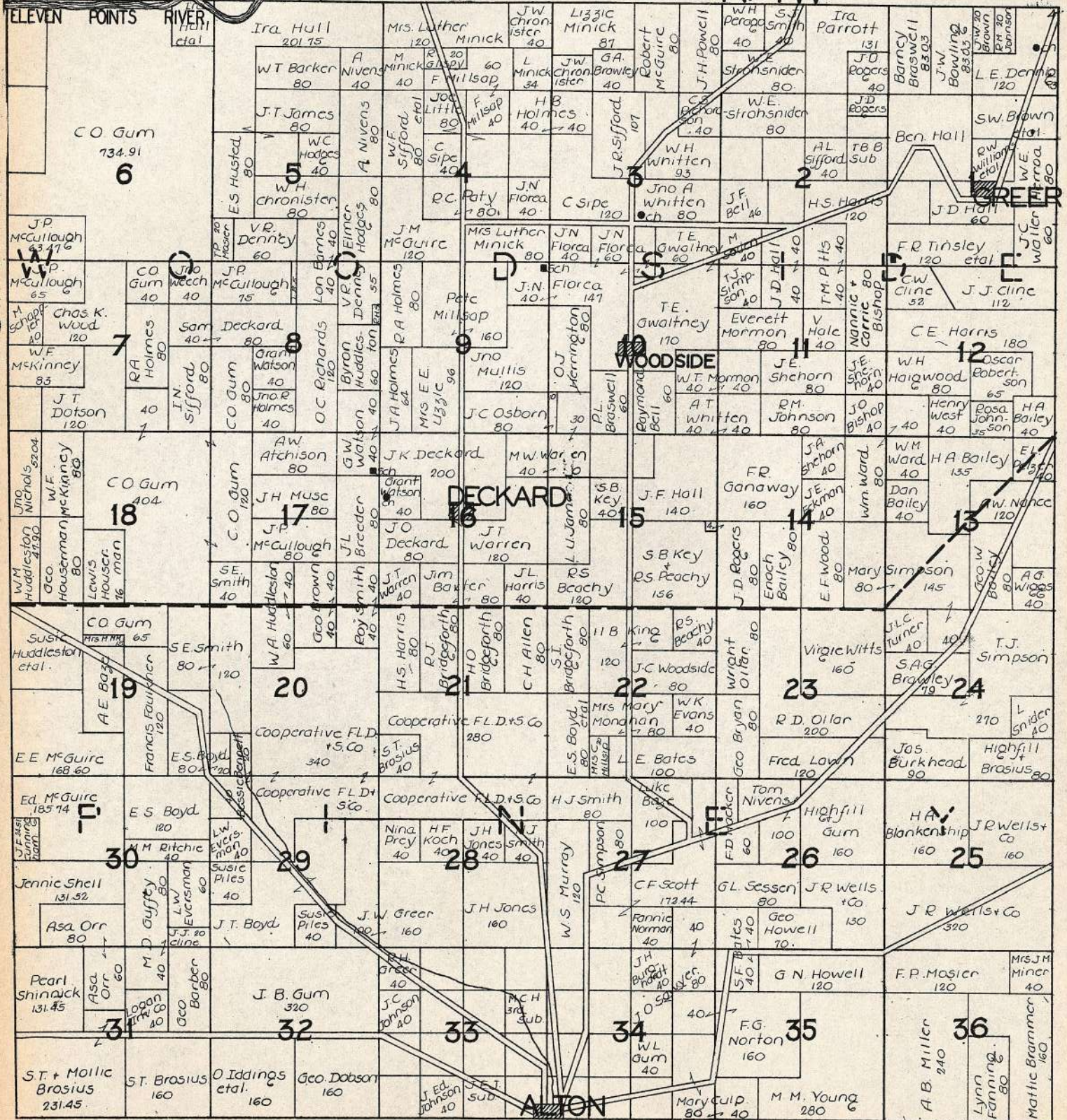
T.23N.

R.4W.



T. 24 N.

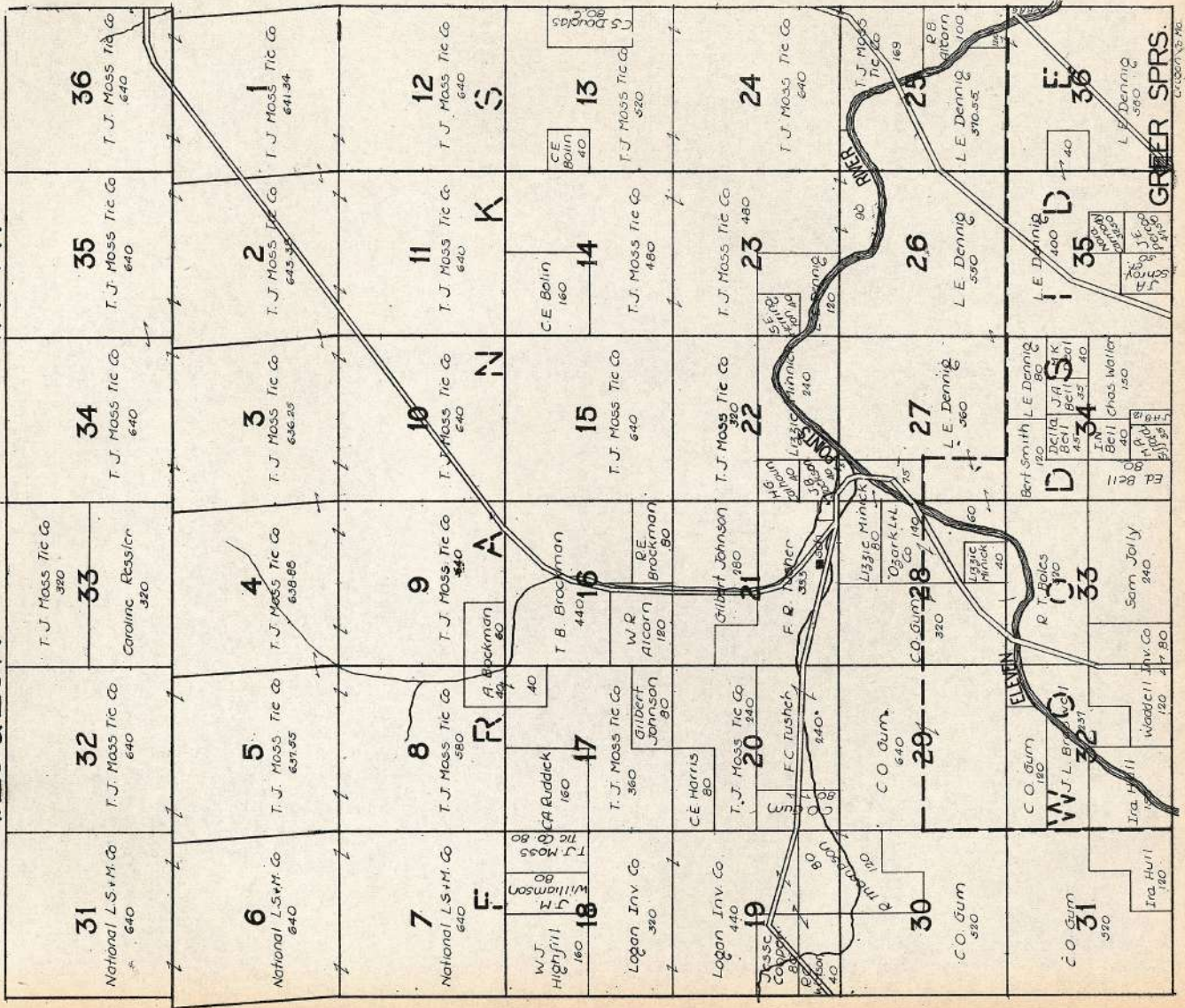
R. 4 W.



Oregon Co. Mo.

T.25 & 26N.

R.4W.



GREEN SPRINGS

CE Bolin 40

CE Bolin 160

CE Bolin 40

CE Bolin 40

CE Bolin 40

CE Bolin 40

CE Bolin 40

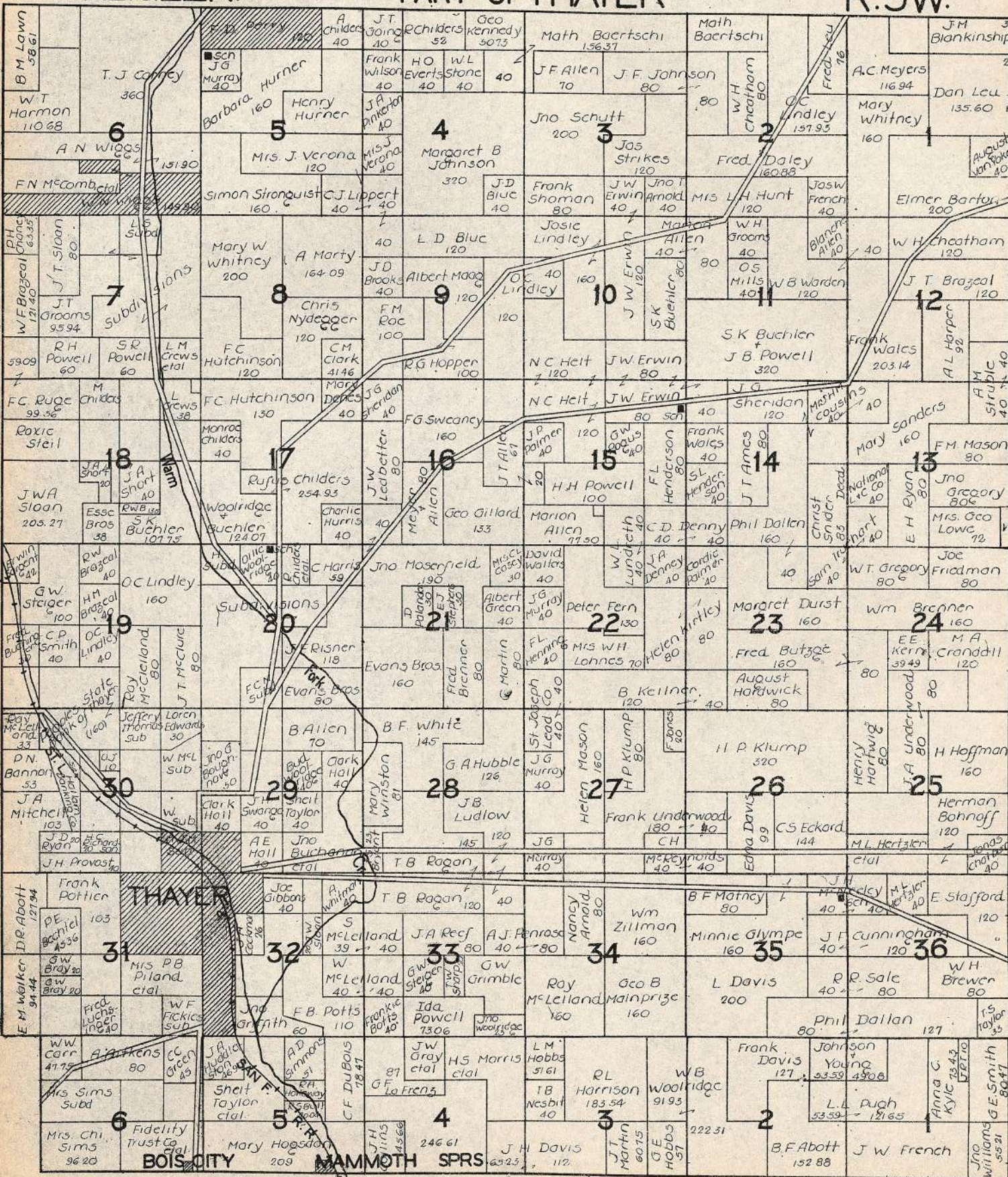
CE Bolin 40

CE Bolin 40

T.21&22N.

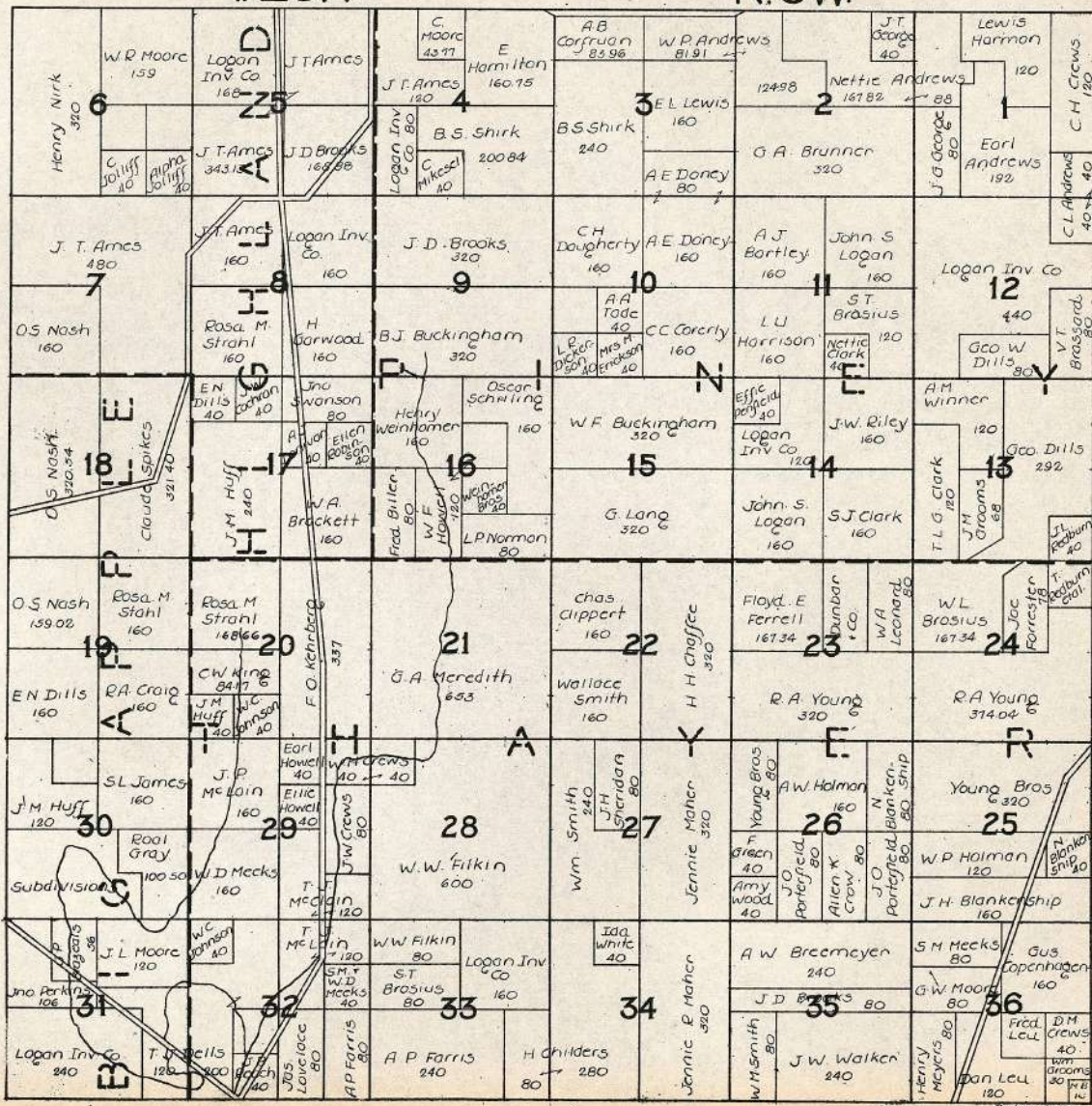
PART OF THAYER

R.5W.



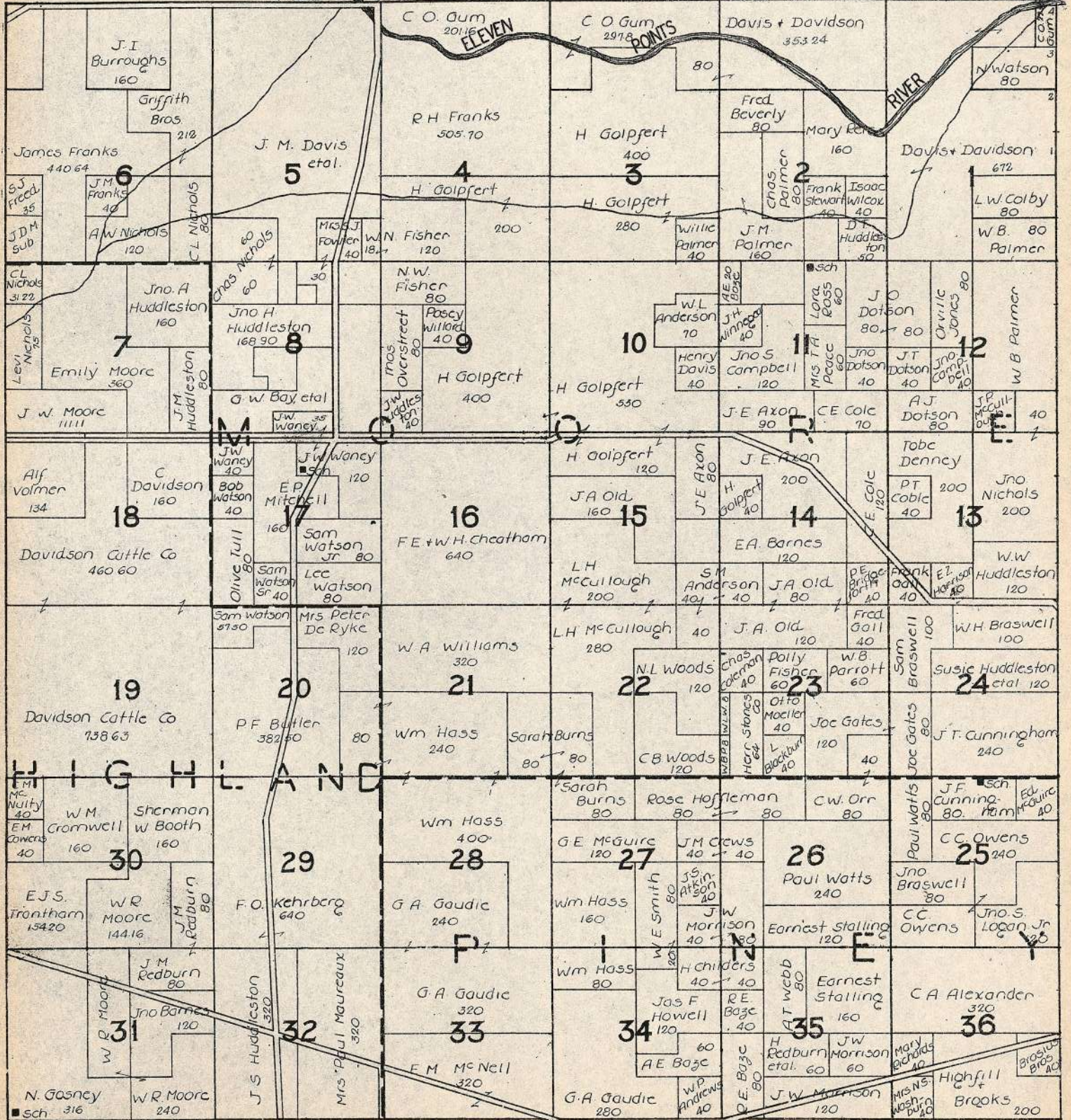
T.23N.

R.5W.



T.24N.

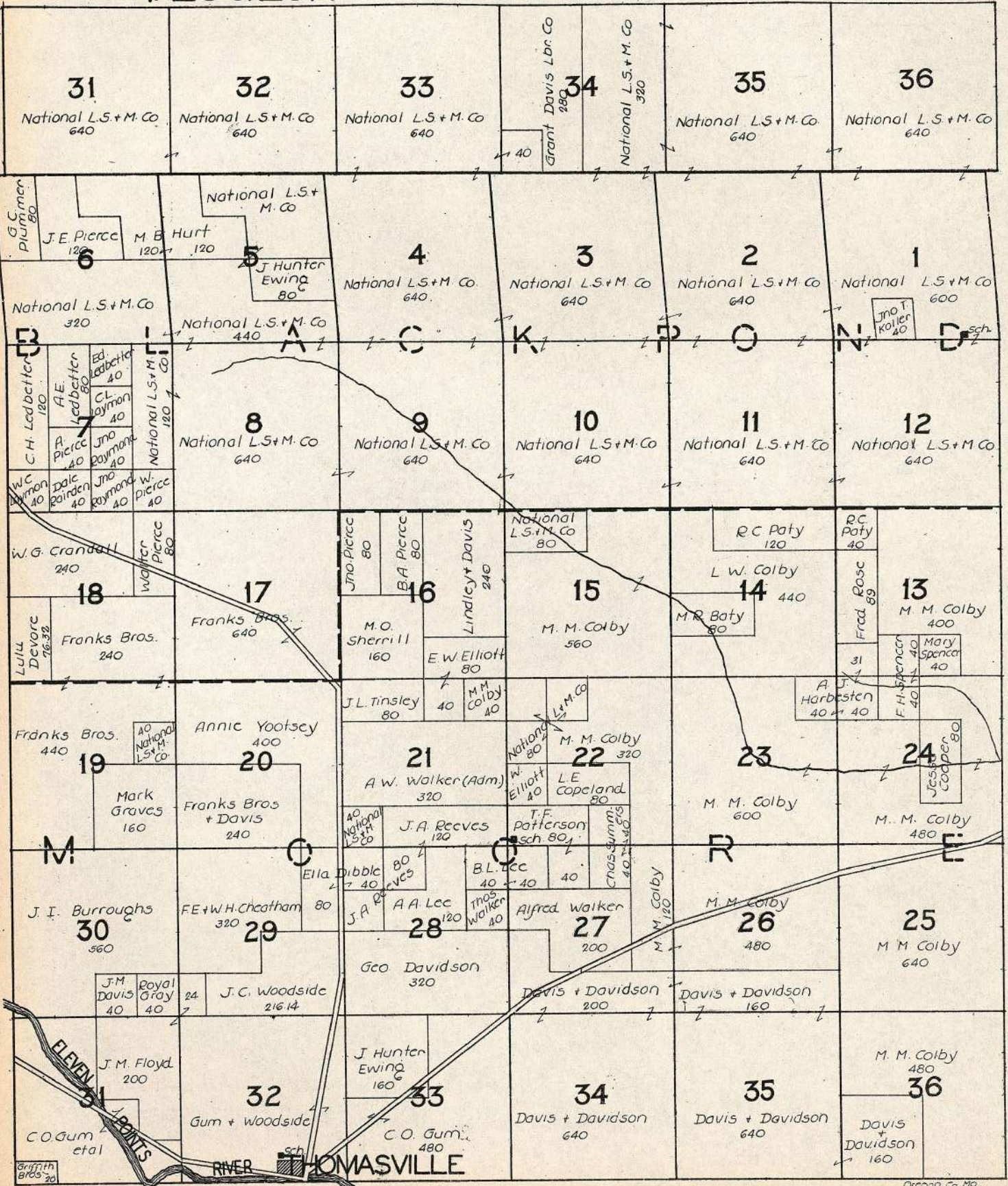
R.5W.



Oregon Co. Mo.

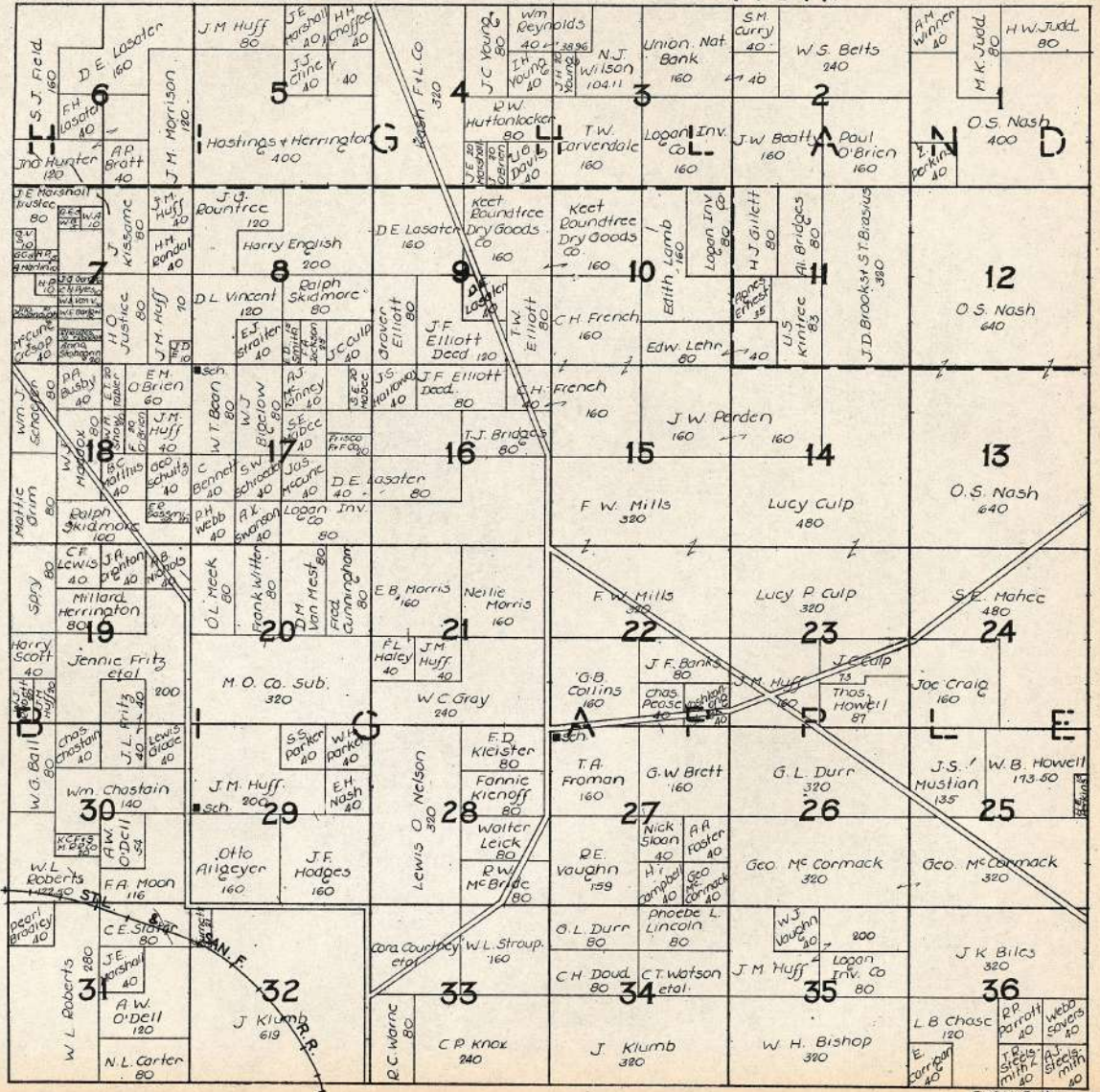
T. 25 & 26N.

R. 5W.



T.23N.

R.6W.



T.24N.

R.6W.

| | | | | | | | | |
|----------------------------|-----------------------------------|---------------------------|------------------------------|-----------------------------|-----------------------------|---|------------------------|------------------------|
| J.D. Morgan 160 | Ray Willard 80 40 40 | Cheatham Bros | Ernest Batten | Walter Emery | S.B. Wilson 47.39 | C.W. Huddleston 49.94 | C.A. Lewis 123.07 | S.D. Neal 40 |
| M T.L. Reed 173.81 | D.W. Cull 120 | 5 Cheatham Bros. 960 | 4 Ernest Batten 480 | 3 Meyers Milling Co. 320 | R J.R. Wells + Co 253.62 | 2 J.F. Anichland 640 | Jas. Zirkle 80 | E Don Lehman 80 |
| W.J. Zorn 38 | Oscar Hartley 80 Lec Fuller 80 | | Don. R. Luhman 480 | | | | Jas. Zirkle 240 | R.M. Bugg 160 |
| 7 R.S. Hogan 673 | 8 N.R. Huddleston 320 | 9 M.F. Hammond 320 | | 10 M.S. Hammond 320 | | 11 W.H. Jolliff 160 Henry Willard 120 | | 12 Levi Nichols 120 |
| 18 H.C. Kinyon 289.94 | 17 Isaac Combs 160 | 16 J.G. Huddleston 120 | | 15 J.D. Huddleston 80 | | 14 Thos. Overstreet 200 | | 13 M.G. Willard 200 |
| 19 Mrs. E.M. Walker 240 | 20 Combs Bros. 160 | 21 J.R. Willard 40 | | 22 N.E. Jolliff 320 | | 23 Elmer VonAllman 80 | | 24 J.H. Ewing 120 |
| 30 Davidson Ball 182.28 | 29 Hogan Highfill 160 | | 28 L. Johnson 640 | | 27 J.B. Clark 136 | | 26 R.M. Andrews 120 | 25 J.A. Redburn 80 |
| 31 Osage City Iowa 280 | 32 L. Johnson 640 | | 33 Union Nat. Bank 234.50 | | 34 J.B. Clark 158 | | 35 T.C. English 160 | 36 A.W. Haynes 240 |

