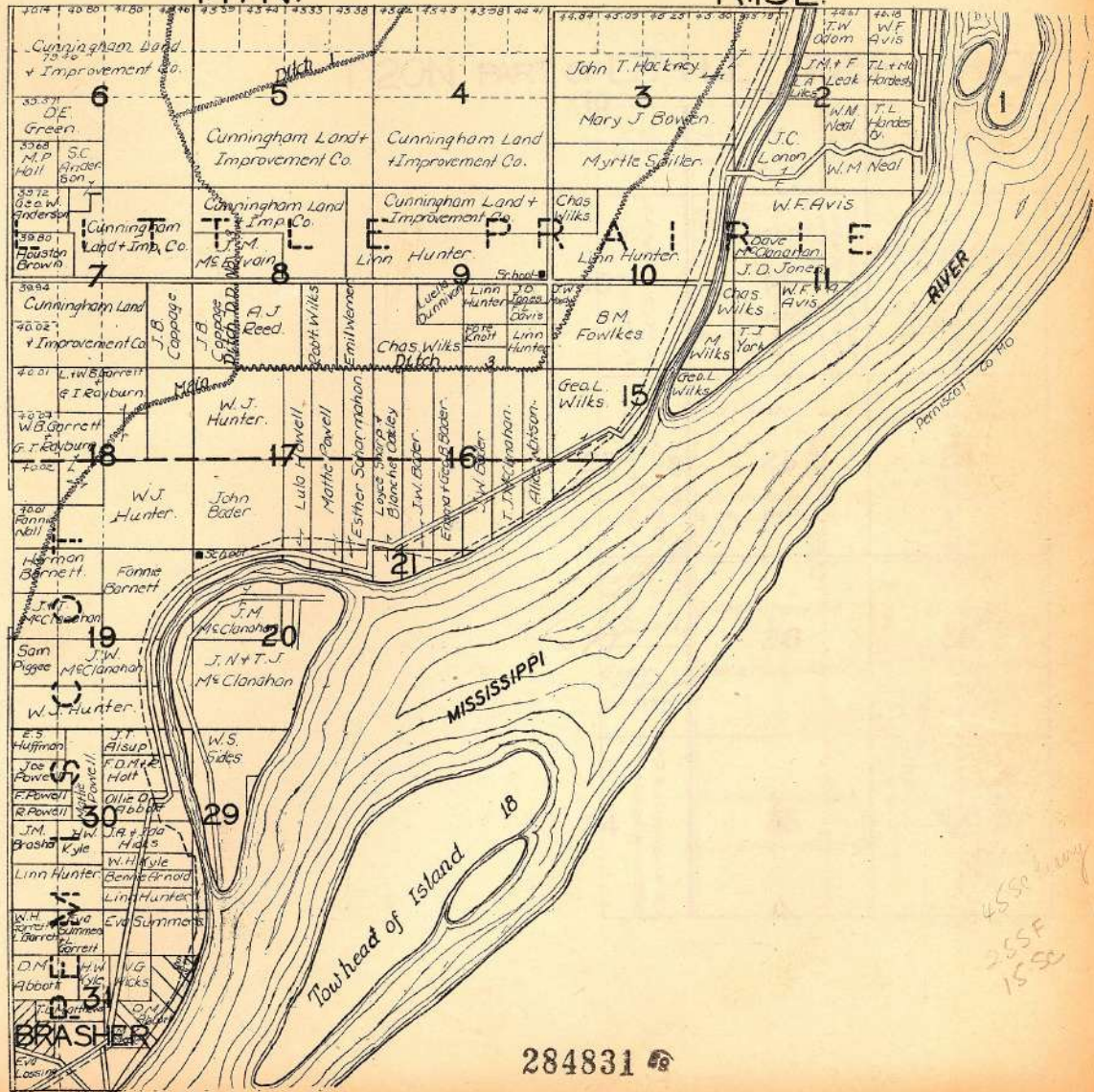


333,09778  
 H64  
 no. 78  
 Rare BK. Rm

T.17N.

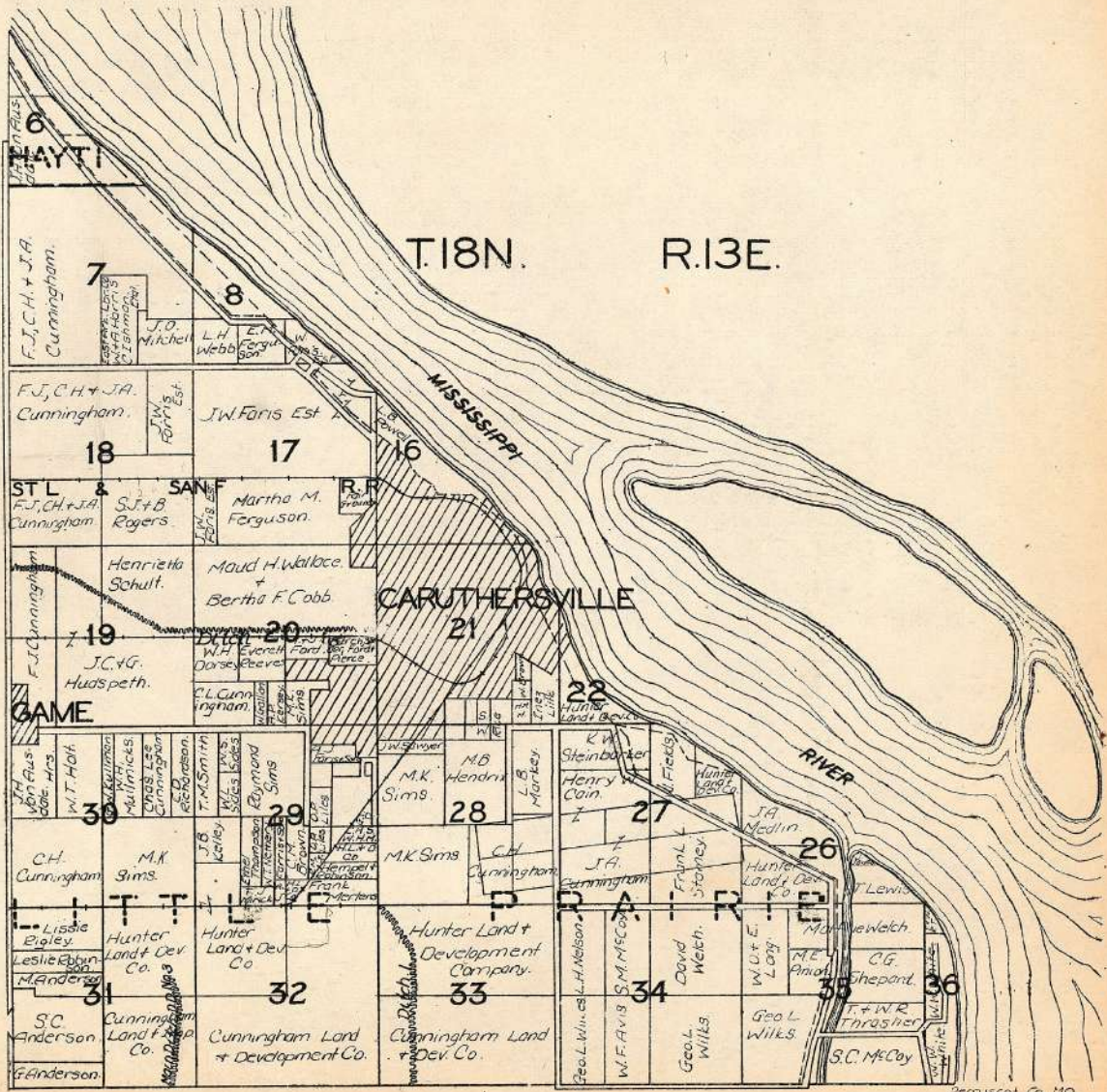
R.13E.



4-30-31 Hiram 1.50. Agr. Exp. Sta.

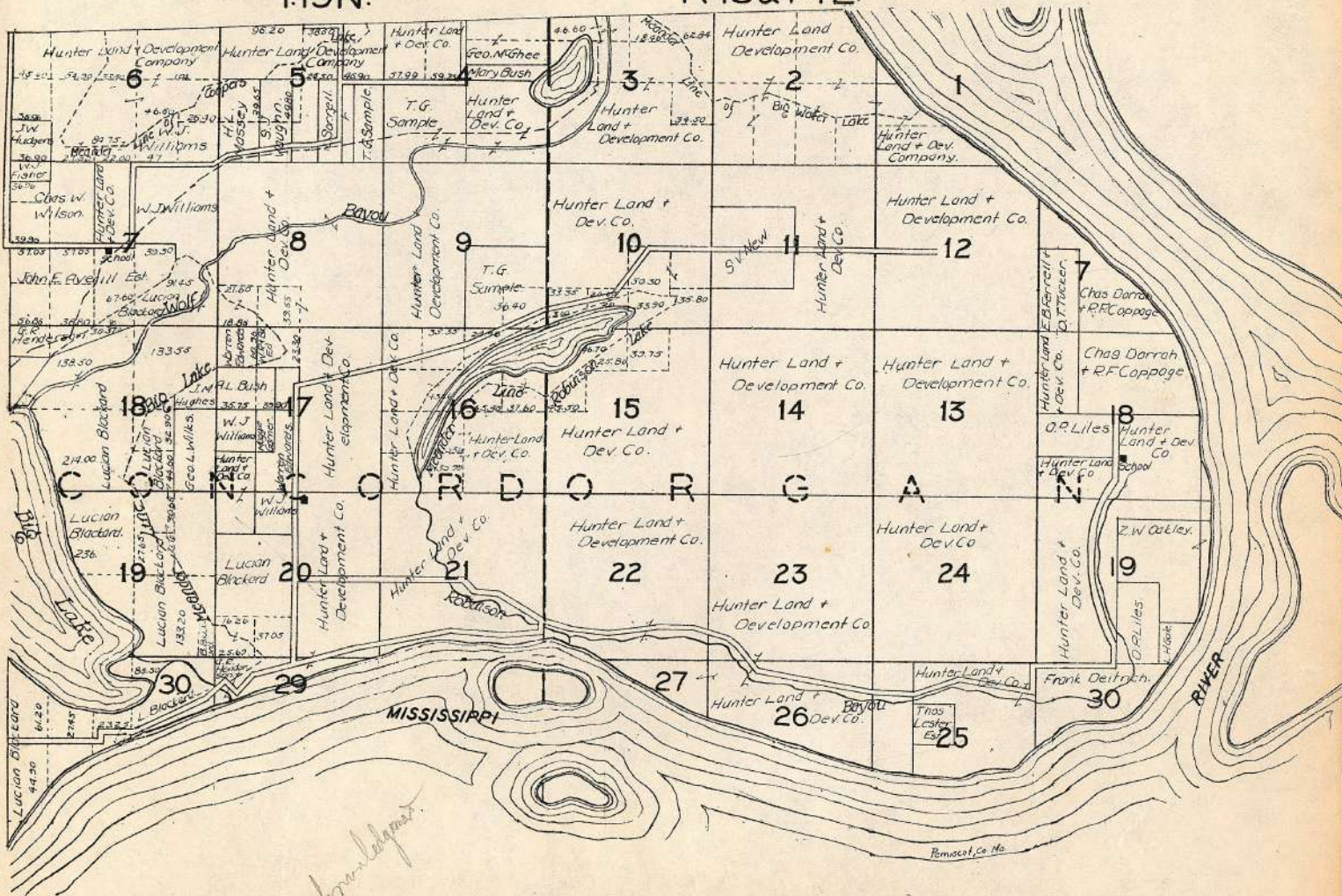
4550  
 255F  
 1550

284831



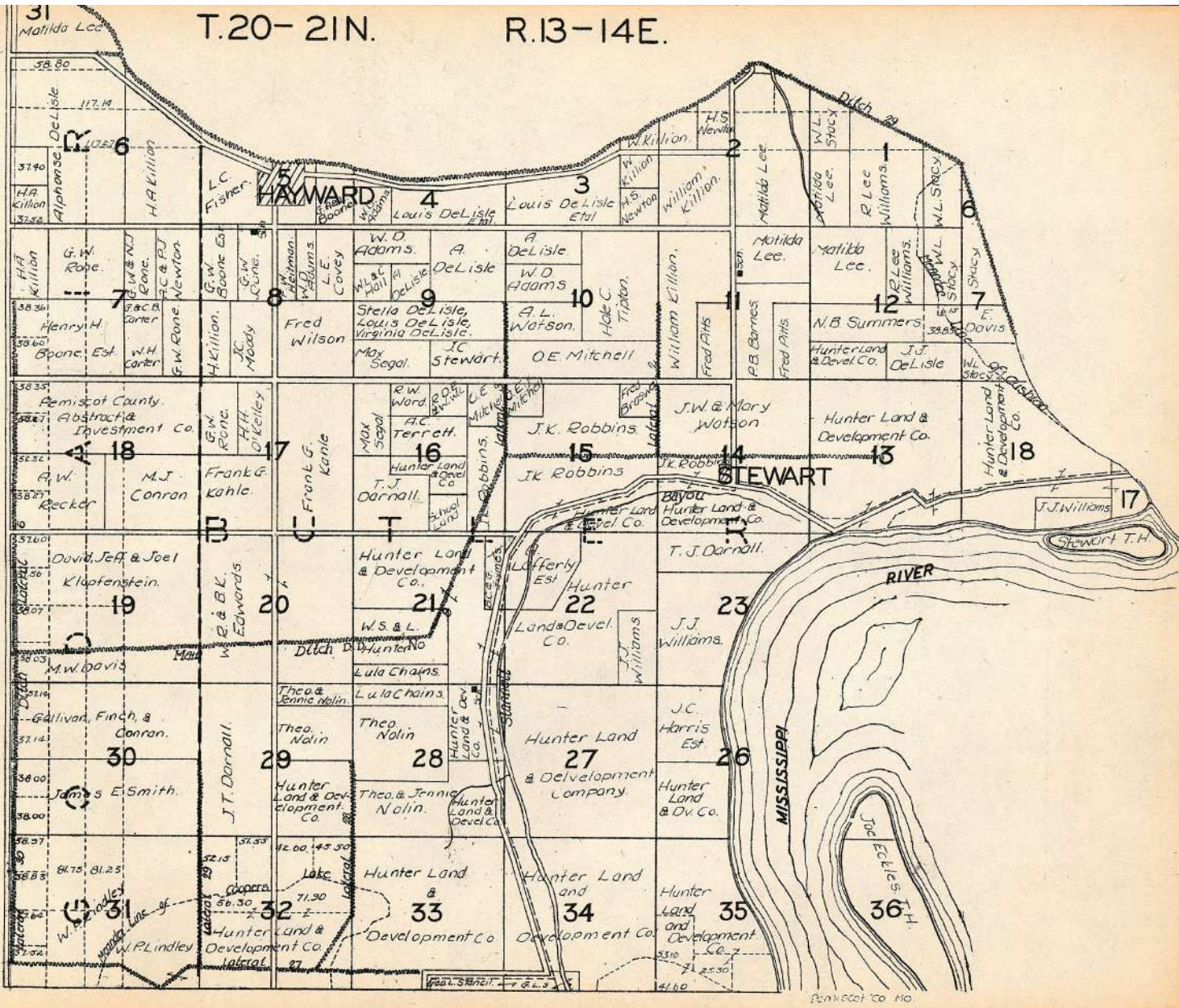
T.19N.

R.13&14E.



T.20-21N.

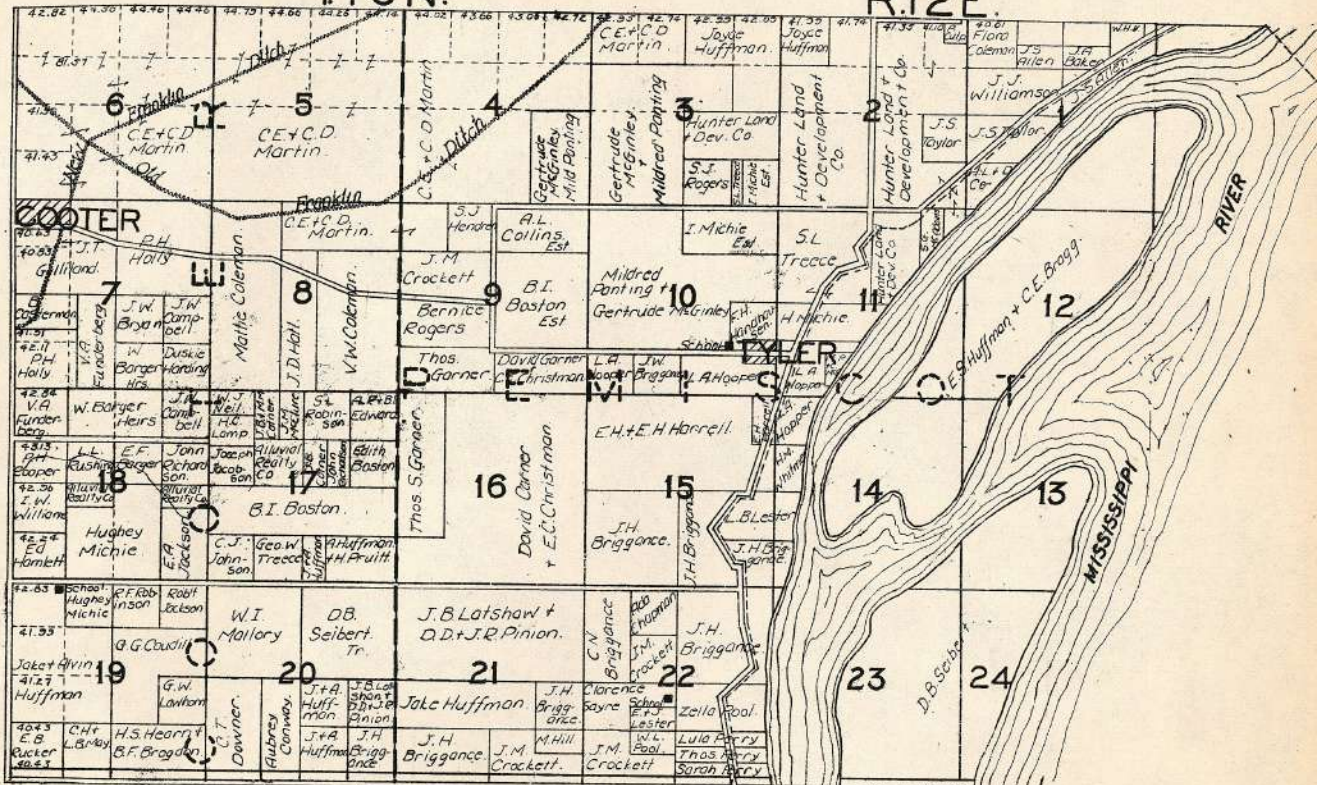
R.13-14E.



REMIICK CO. MO.

T16N.

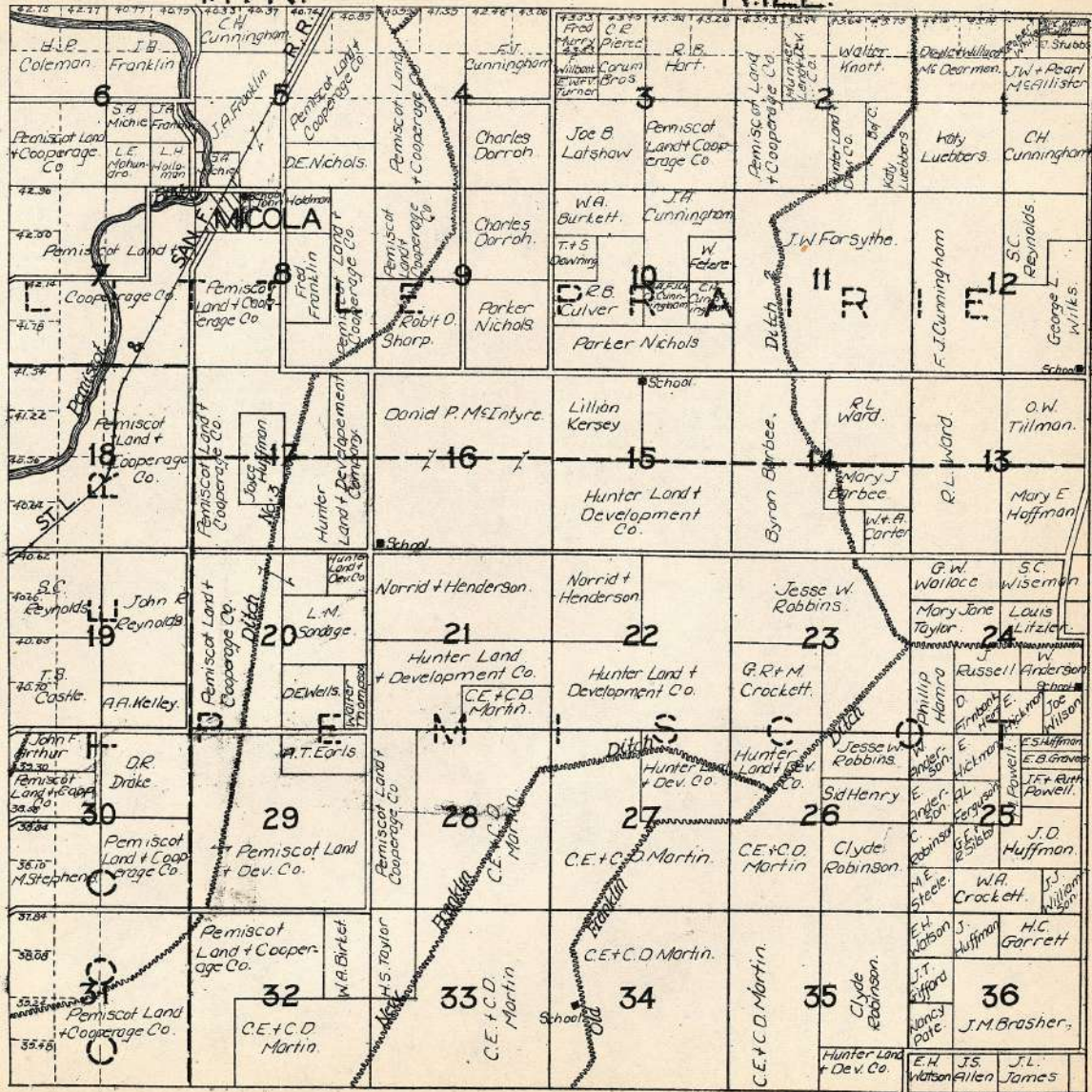
R.12E.



Pemiscot Co. Mo.

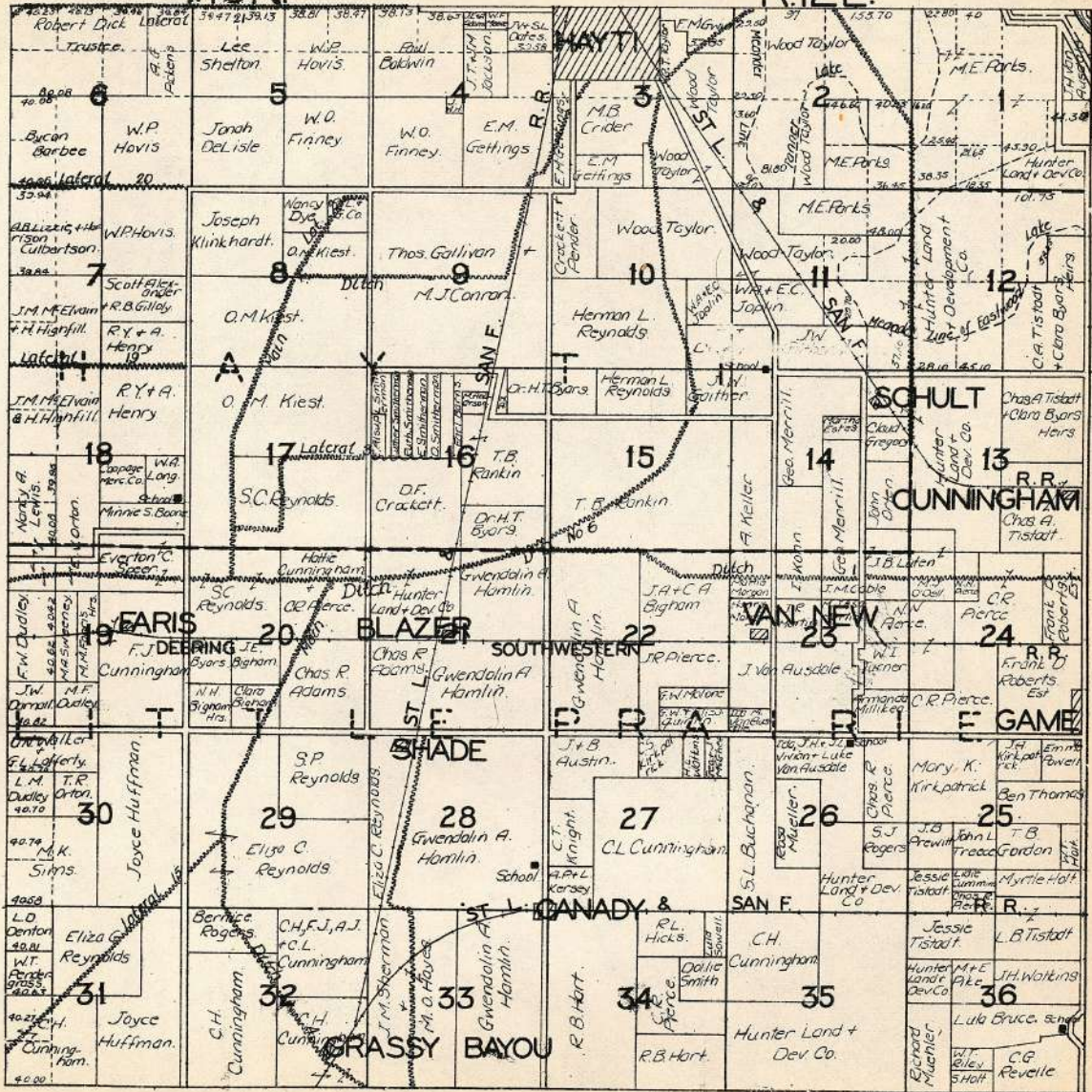
T.17N.

R.12E.



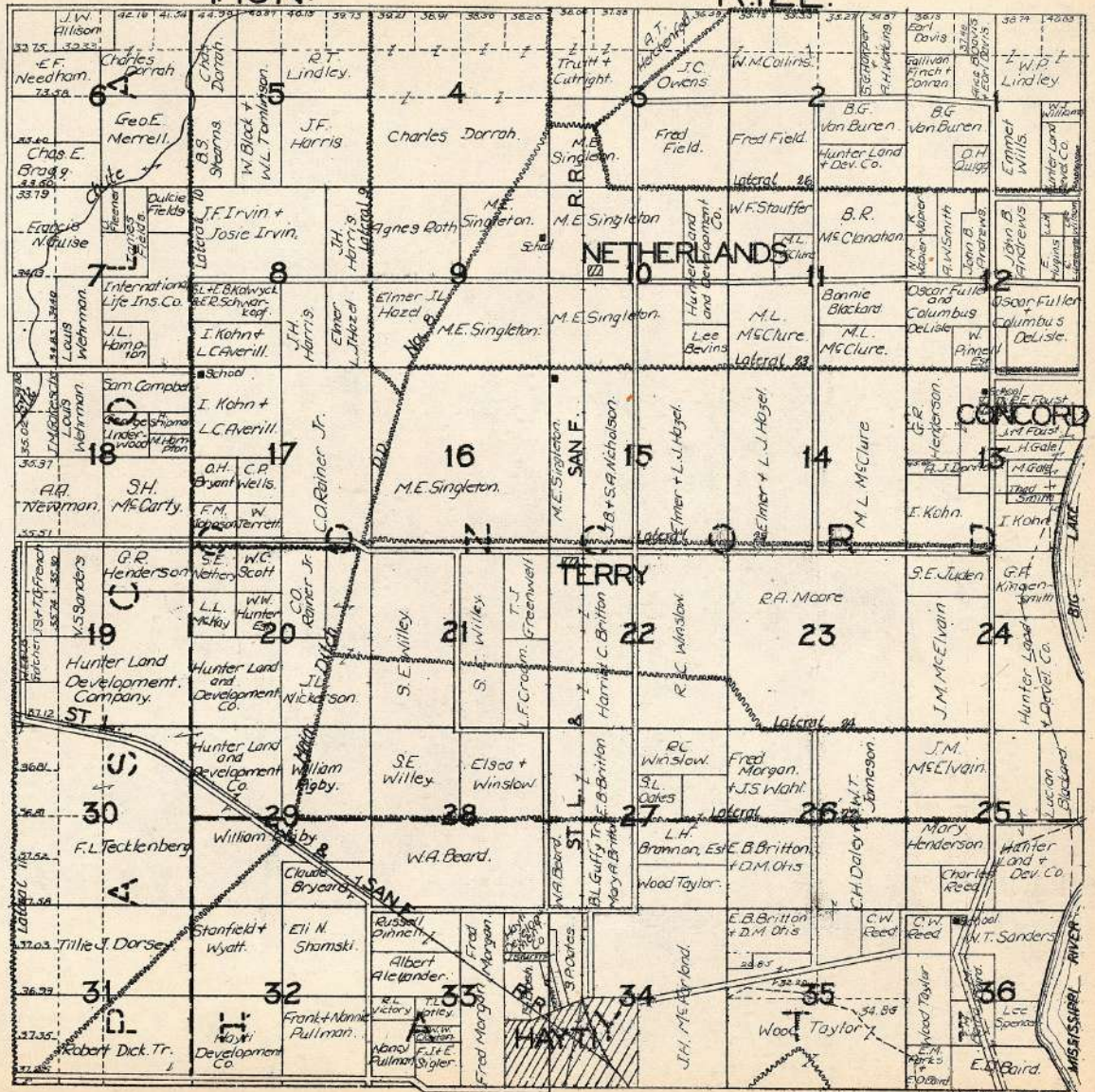
T.18N

R.12E.



T.19N.

R.12E.

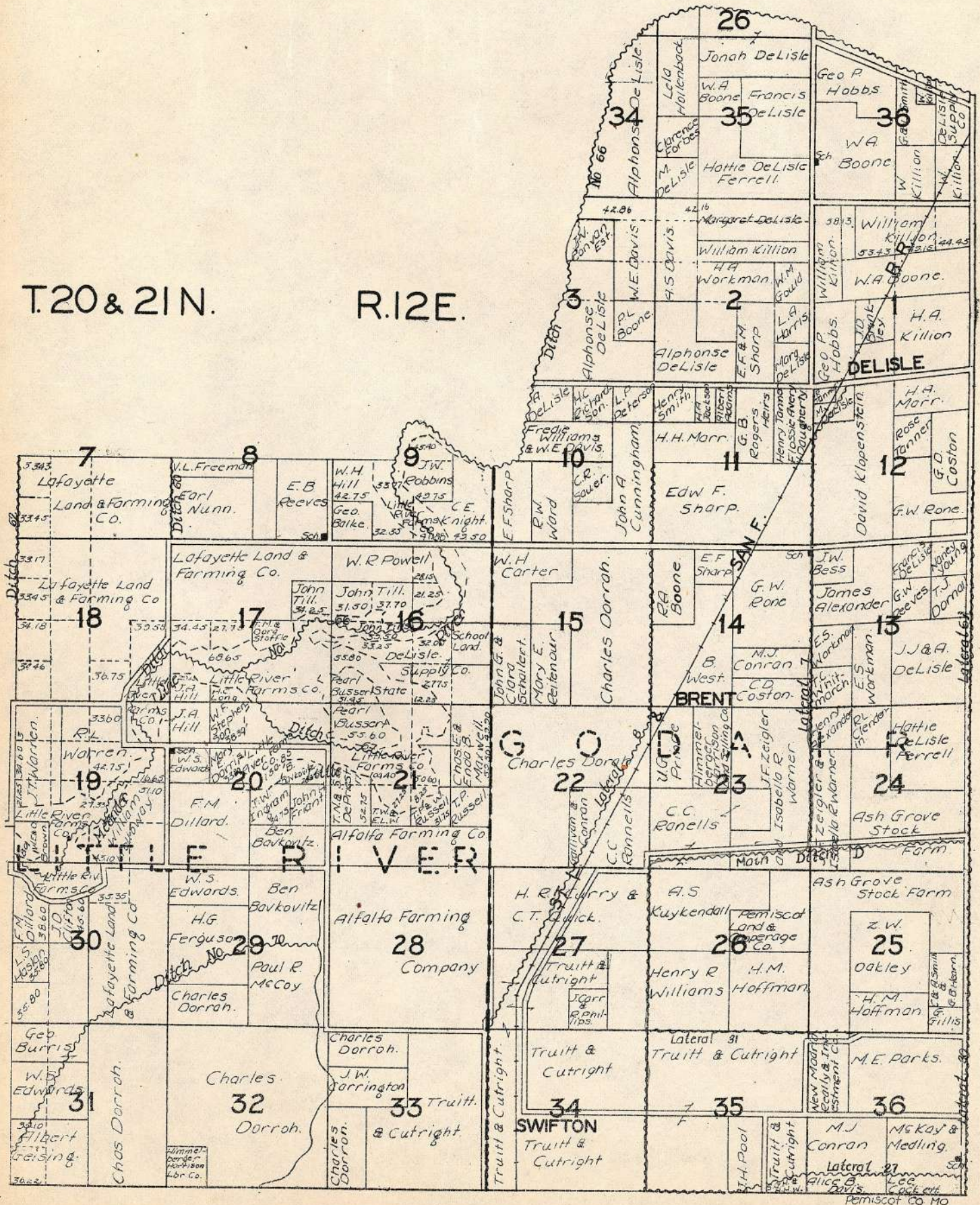


Permittor Co No



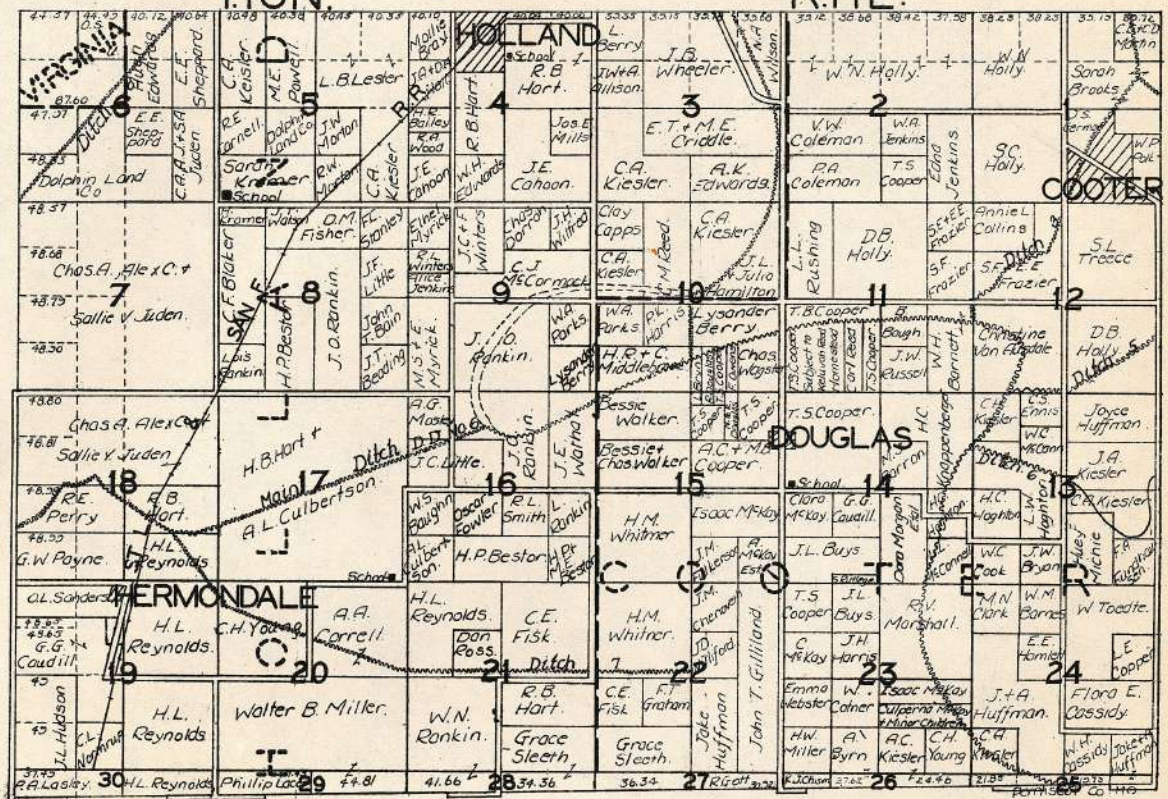
T.20 & 21 N.

R.12 E.



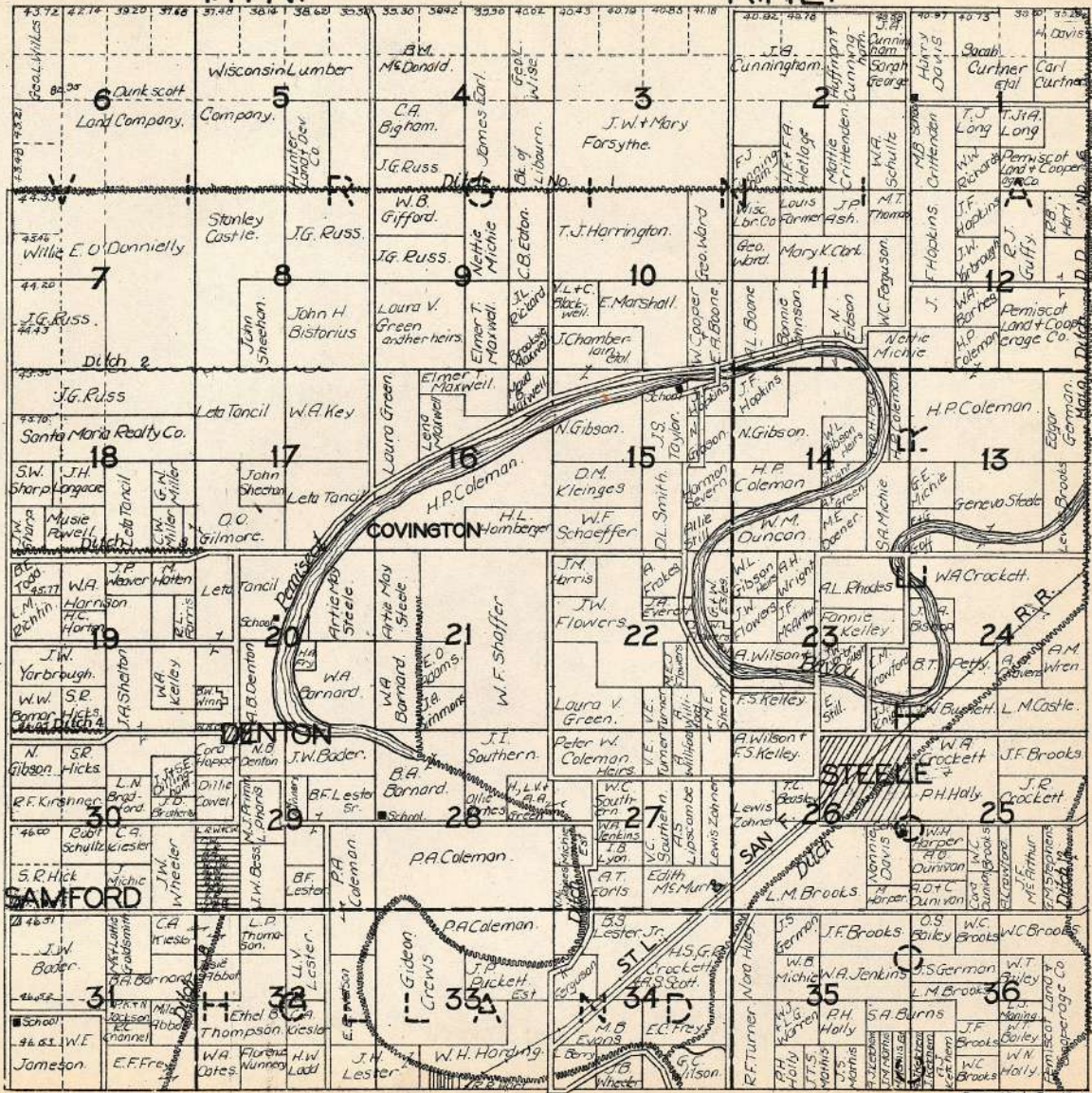
T16N.

R.11E.



T.17N.

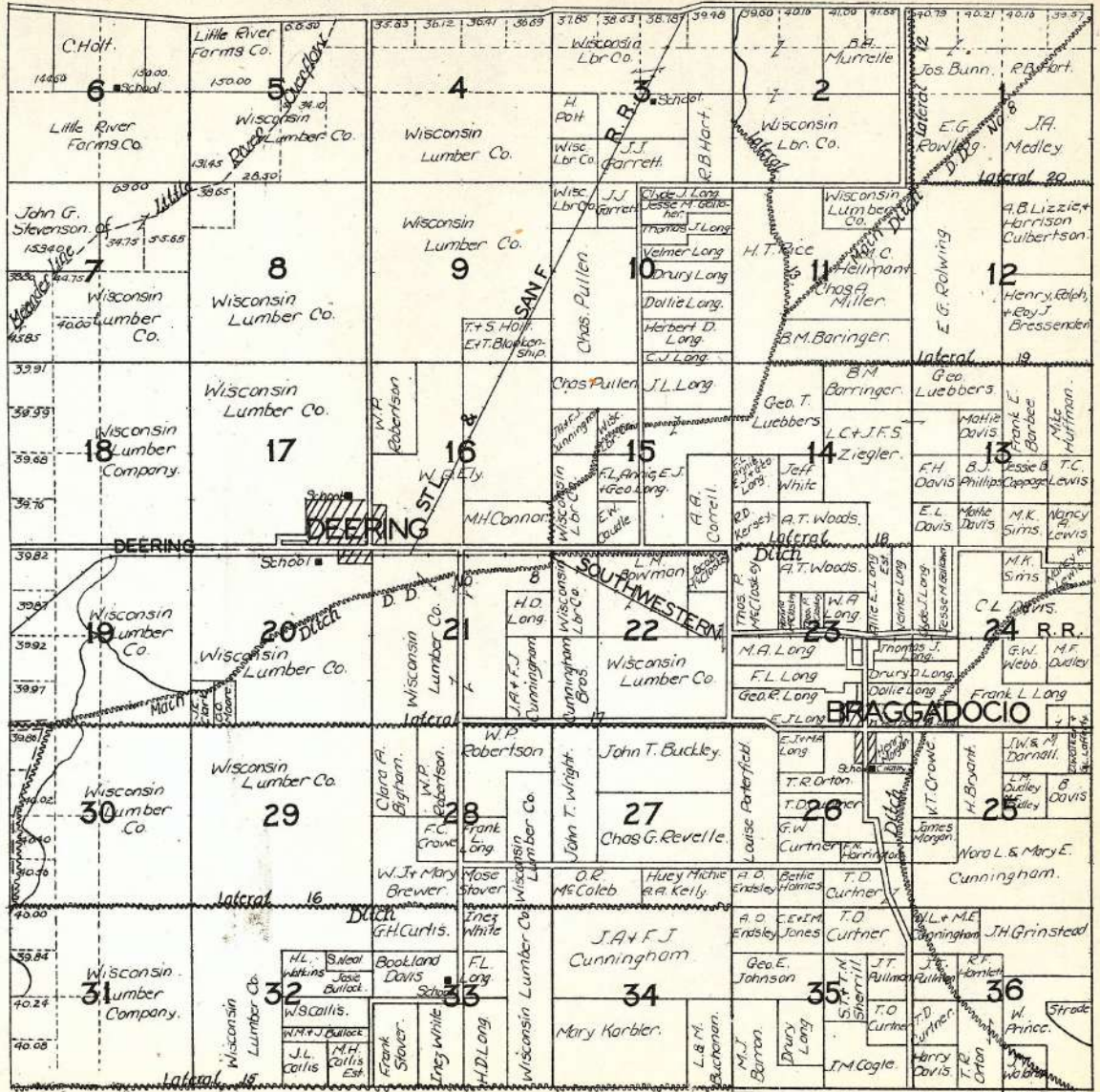
R.1E.



T.18N.

PART OF BRAGGADOCIO

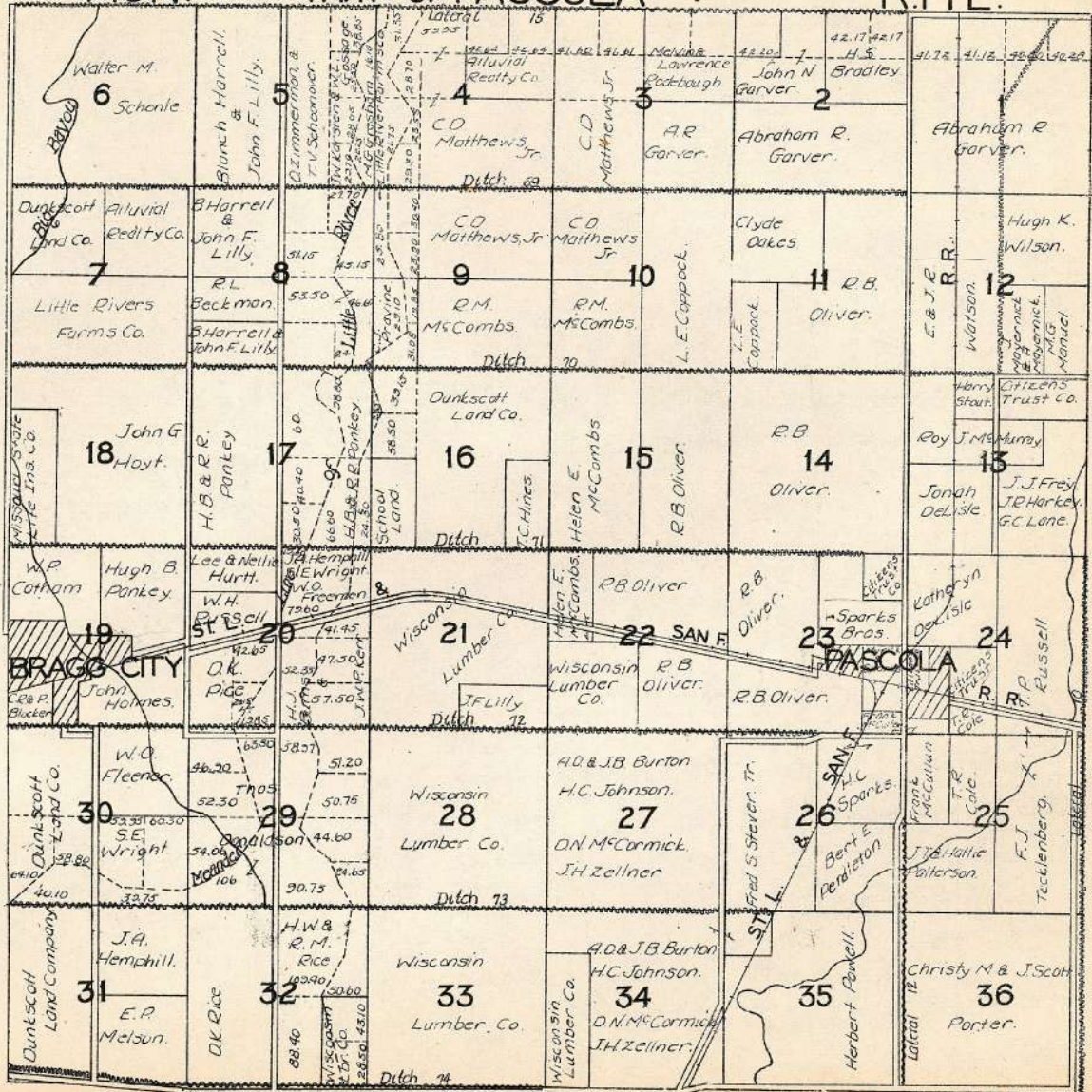
R.1E.



T.19N

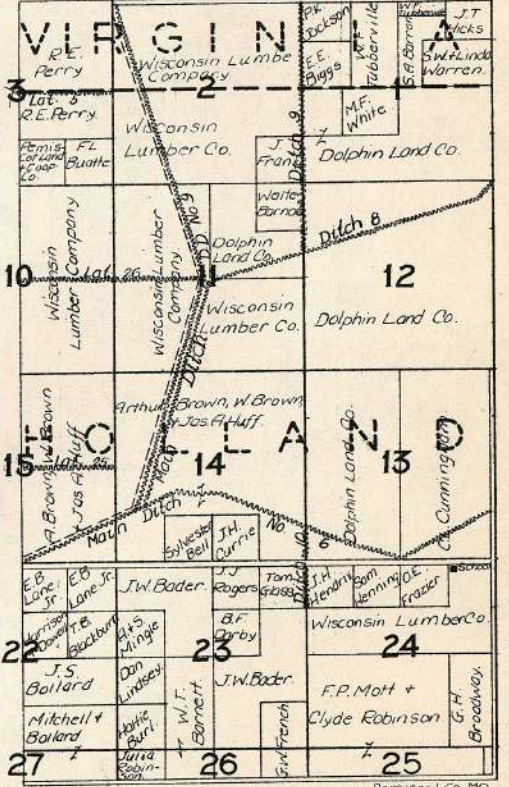
PART OF PASCOLA

R.11E.

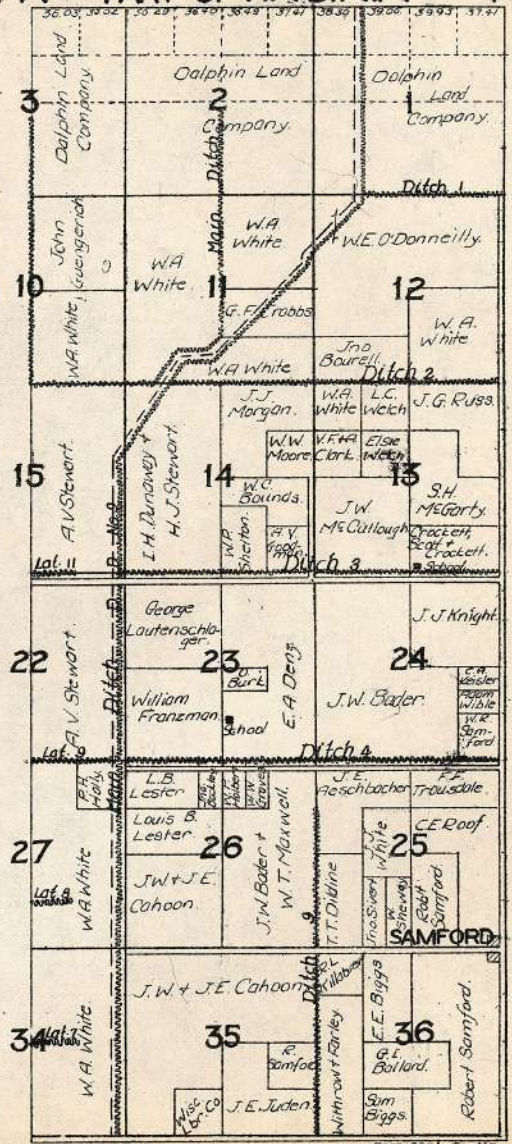




T.16N. R.10E.



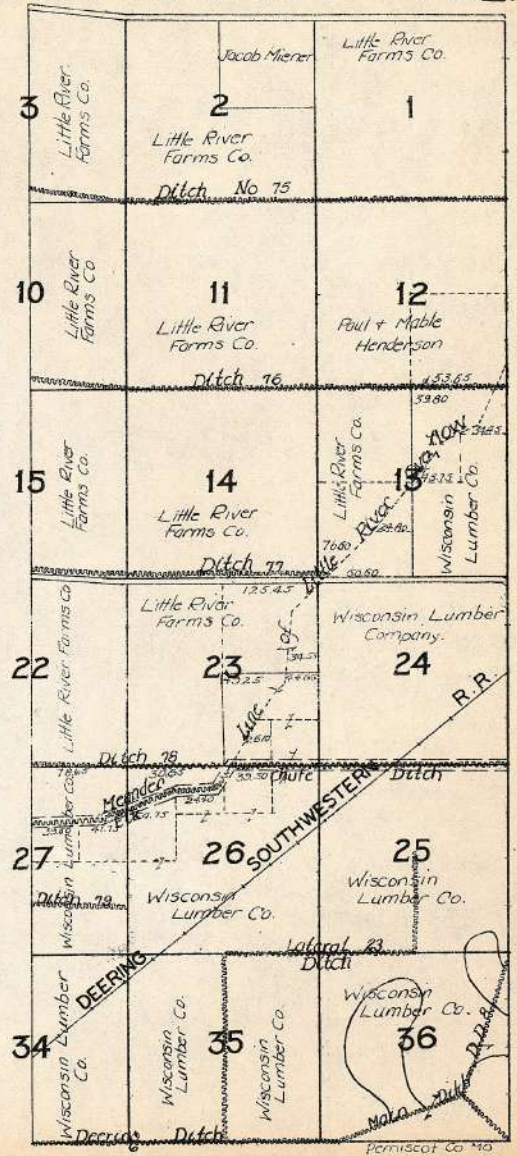
T17N. PART OF VIRGINIA R.10E.



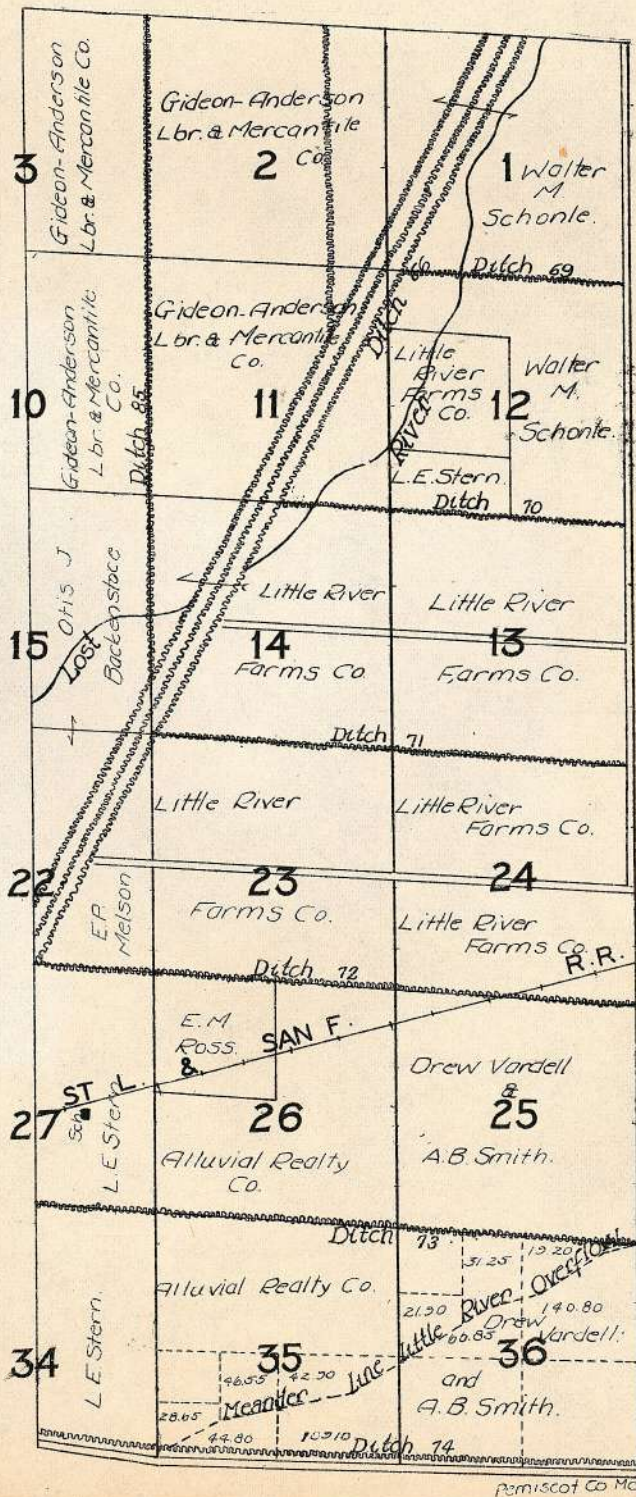
23



T. 18N. PART OF BRAGGADOCIO R. 10E.



T.19N. PART OF PASCOLA R.10E.



T. 20N. PART OF LITTLE RIVER RICE.

	10	11	12
	E.E. Smith	W.H. Bland and Harold Stubblefield.	Gideon-Anderson Lumber & Mercantile Co.
15	W.H. Bland and Harold Stubblefield	14 W.H. Bland & Harold Stubblefield & W.C. Shupp.	13 Gideon-Anderson Lbr. & Mercantile Co.
22	R.B. & A.L. Oliver & C.W. Kochizky. No. 88	23 C.B. McCorty Gideon-Anderson Lbr. & Mercantile Co.	24 Gideon-Anderson Lbr. & Mercantile Co.
27	R.B. & A.L. Oliver & C.W. Kochizky	26 Gideon-Anderson Lbr. & Mercantile Co.	25 Gideon-Anderson Lbr. & Mercantile Co. & Little River Farms Co. 66.70 54.00 152.20
34	Gideon-Anderson Lbr. & Mercantile Co.	35 Gideon-Anderson Lbr. & Mercantile Co.	36 Gideon-Anderson Lbr. & Mercantile Co. & Little River Farms Co. 165.10 57.05 102.20

Pemisc of Co. MO