

PORTRAIT DEPARTMENT



GEORGE W. ROY,
CALUMET.



F. M. FOGLE,
LOUISIANA.



H. C. NOYES,
CURRYVILLE.



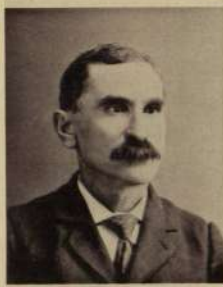
T. J. BEARDS,
CURRYVILLE.



R. E. DAWSON,
LOUISIANA.



GEORGE W. SMITH,
LOUISIANA.



JAMES SINCLAIR,
LOUISIANA.



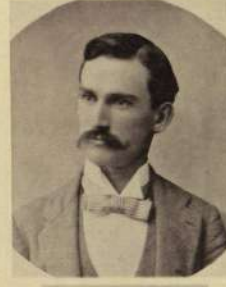
J. O. MCINNES,
LOUISIANA.



J. N. PRICE,
LOUISIANA.



W. W. GORE,
VANDALIA.



W. E. REILLY, M.D.,
BOWLING GREEN.



J. B. BOYSON,
LOUISIANA.



J. C. RIGGS,
CURRYVILLE.



M. S. JONES,
FRANKFORD.



A. E. PULEY,
LOUISIANA.



THOS. A. COOPER,
PINEVILLE.



ROSA A. MAY,
LOUISIANA.



DR. J. W. EHERSON,
LOUISIANA.



JOSEPH TATLEY,
BOWLING GREEN.



MISS KATE HOLMAN,
CURRYVILLE.



A. B. BRITTEN,
CYRENE.



JUSTIN A. GUNTAN,
CLARKVILLE.



W. F. MAYHALL,
BOWLING GREEN.



J. B. SMITH,
CURRYVILLE.



J. B. FITZGERRELL,
BOWLING GREEN.



W. E. PENNY,
CURRYVILLE.



W. S. DAVIS,
CURRYVILLE.



MRS. S. DAVIS,
CURRYVILLE.



JAMES H. EDINOLDS,
LOUISIANA.



FRANK P. ELLIOTT,
CALUMET.

PORTRAIT DEPARTMENT



A. M. RIGGS,
LOUISIANA.



R. H. MATHERS,
ASHLEY.



W. A. RYTUM,
LOUISIANA.



J. M. COLLINS,
CLAYVILLE.



W. M. SEARS,
TURPIN.



EDWARD BLACK,
BOWLING GREEN.



THOMAS MOORE,
BOWLING GREEN.



MRS. ELIZABETH COOPER,
PINESVILLE.



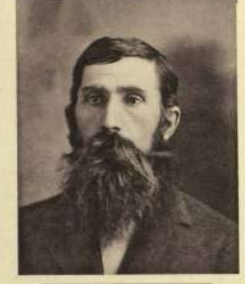
ALICE PARVER,
BOWLING GREEN.



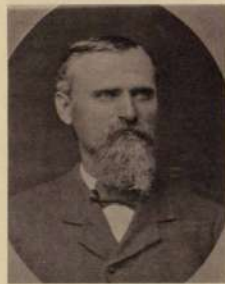
MRS. J. ELLIOTT,
CALUMET.



A. L. GANO,
LOUISIANA.



W. H. BATES,
CLAYVILLE.



M. E. MOTLEY,
BOWLING GREEN.



SAM. G. DOLLARD,
BOWLING GREEN.



RESIDENCE
F. M. FLEGAL.



BABY WILLIAM,
CUREYVILLE.



DR. CHARLES
CUREYVILLE.



J. B. WALLEY,
LOUISIANA.



THOMAS R. JOHNSON,
ASHLAND.



J. HENRY WHITE,
FRANKFORD.



F. M. BESTERMAN FAMILY,
ABBEVILLE.



MITCHELL S. WALKER,
LOUISIANA.



ISAAC C. DEMPSEY,
BOWLING GREEN.



M. D. ANDERSON,
LOUISIANA.



W. H. BROWN,
CLAYVILLE.



W. M. GOODEN,
CALUMET.



W. M. JONES,
FRANKFORD.



J. E. BECKER,
LOUISIANA.



W. H. MOTLEY,
BOWLING GREEN.



W. P. BELLVILLE,
BUSCH.