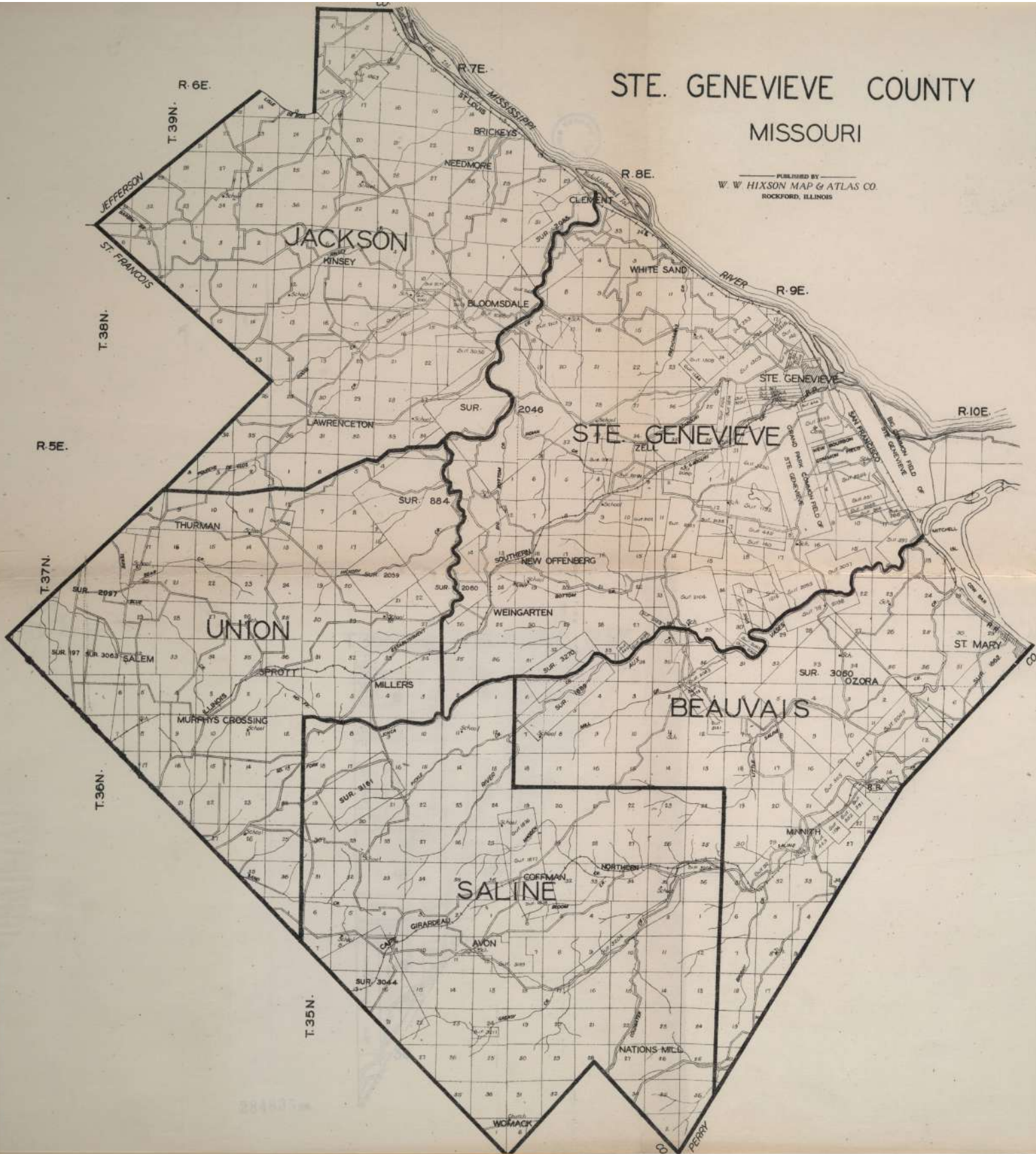


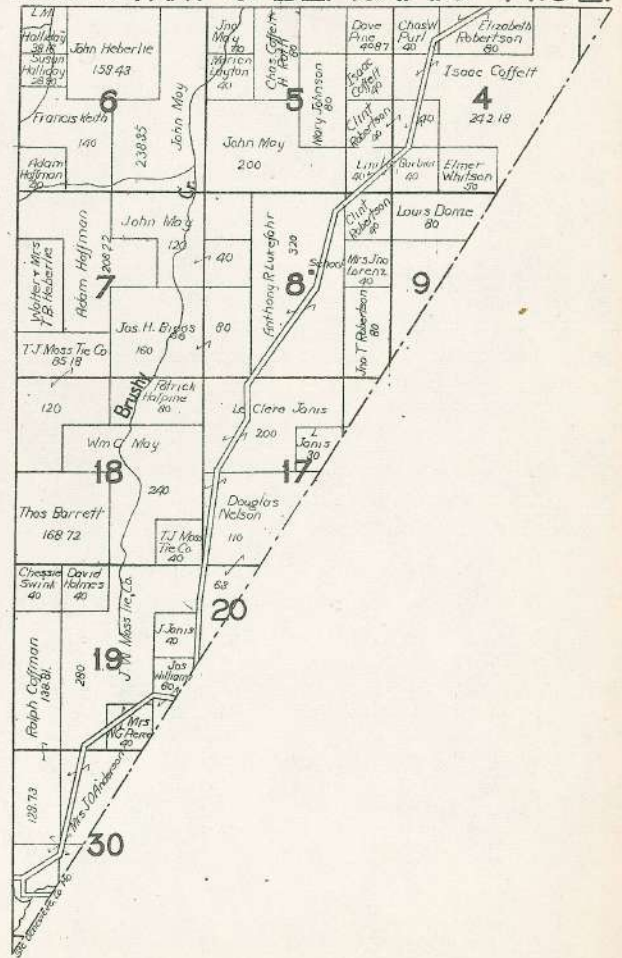
STE. GENEVIEVE COUNTY MISSOURI

PUBLISHED BY
W. W. HIXSON MAP & ATLAS CO.
ROCKFORD, ILLINOIS



333,09778
 H64
 no. 95
 RARE BK. Pm.

T.35N. PART OF BEAUVAIS R.9E.



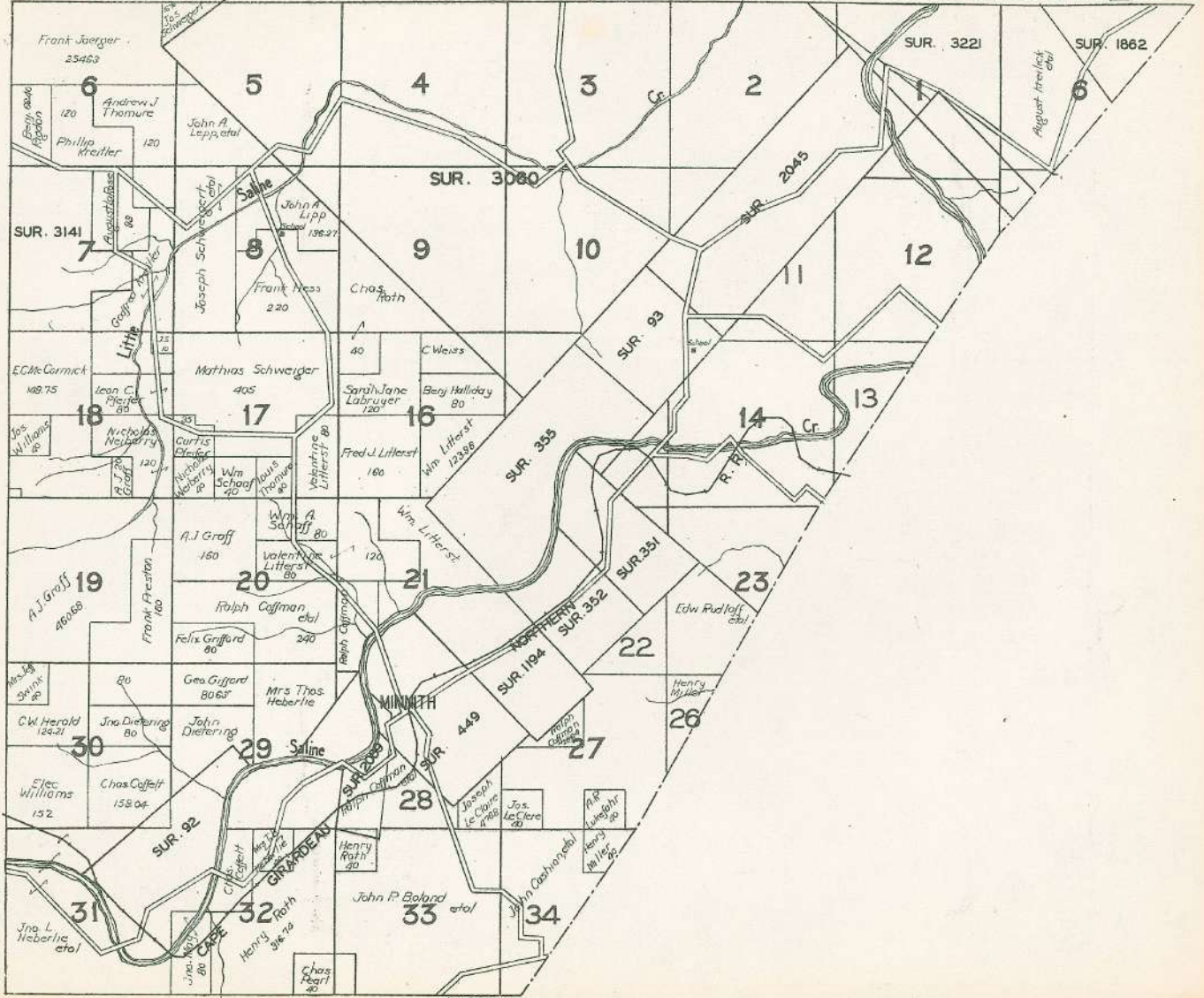
284835 50.

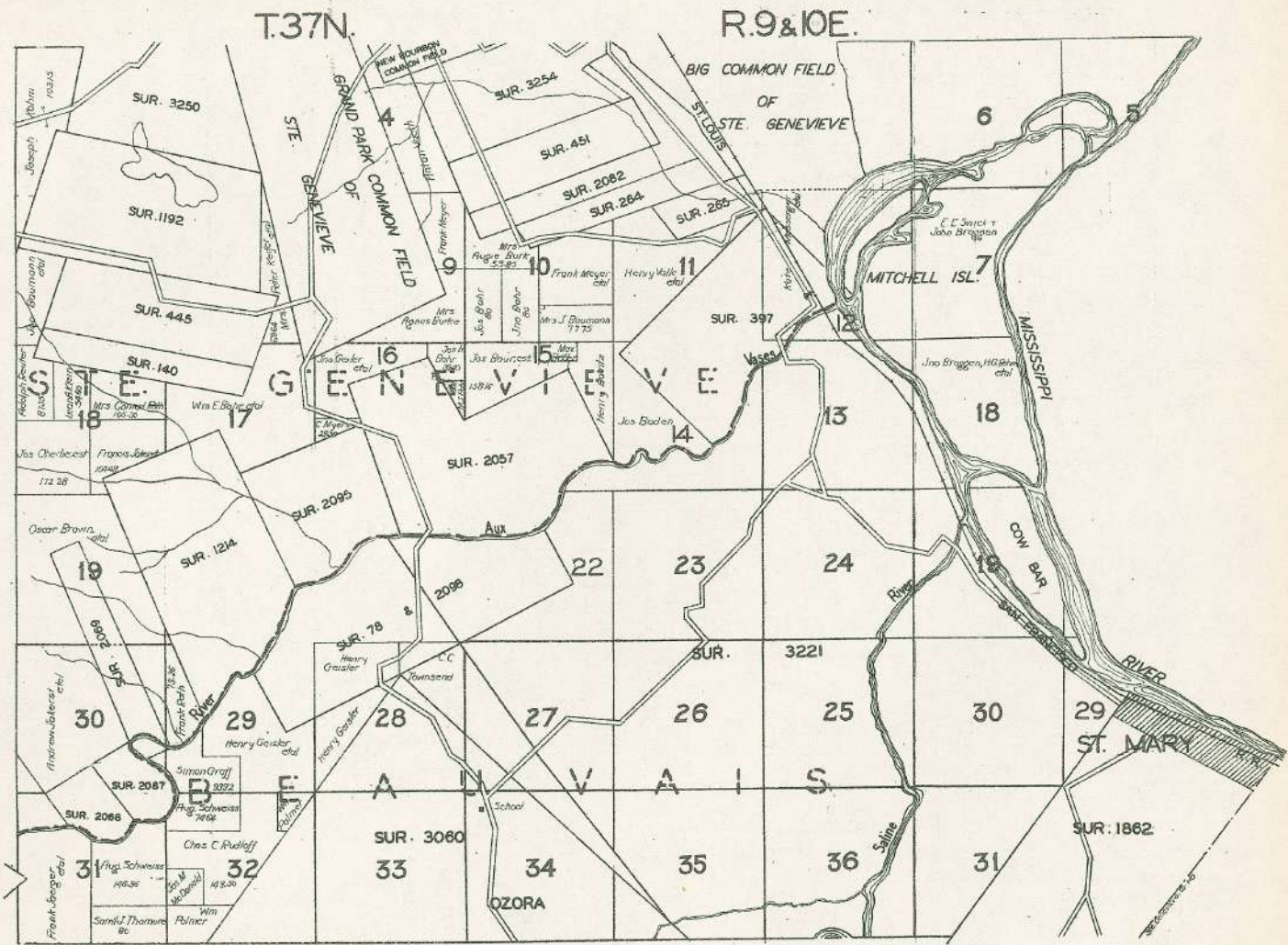
H-30-31 Huson 1.50 Agr. Exp. Sta.

T.36N.

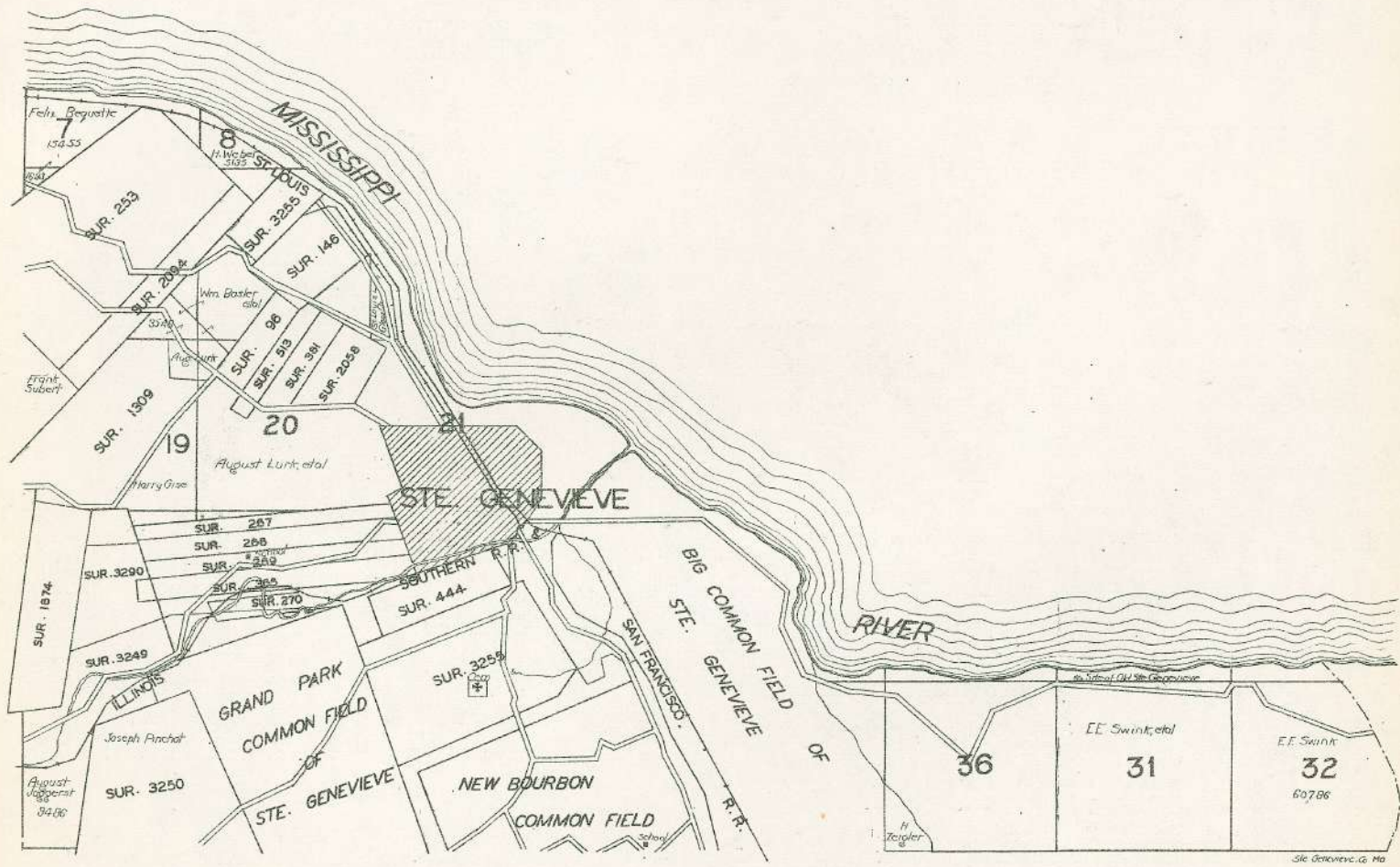
PART OF BEAUVAIS

R.9 & 10E.





T.38N. PART OF STE. GENEVIEVE R.9&10E.

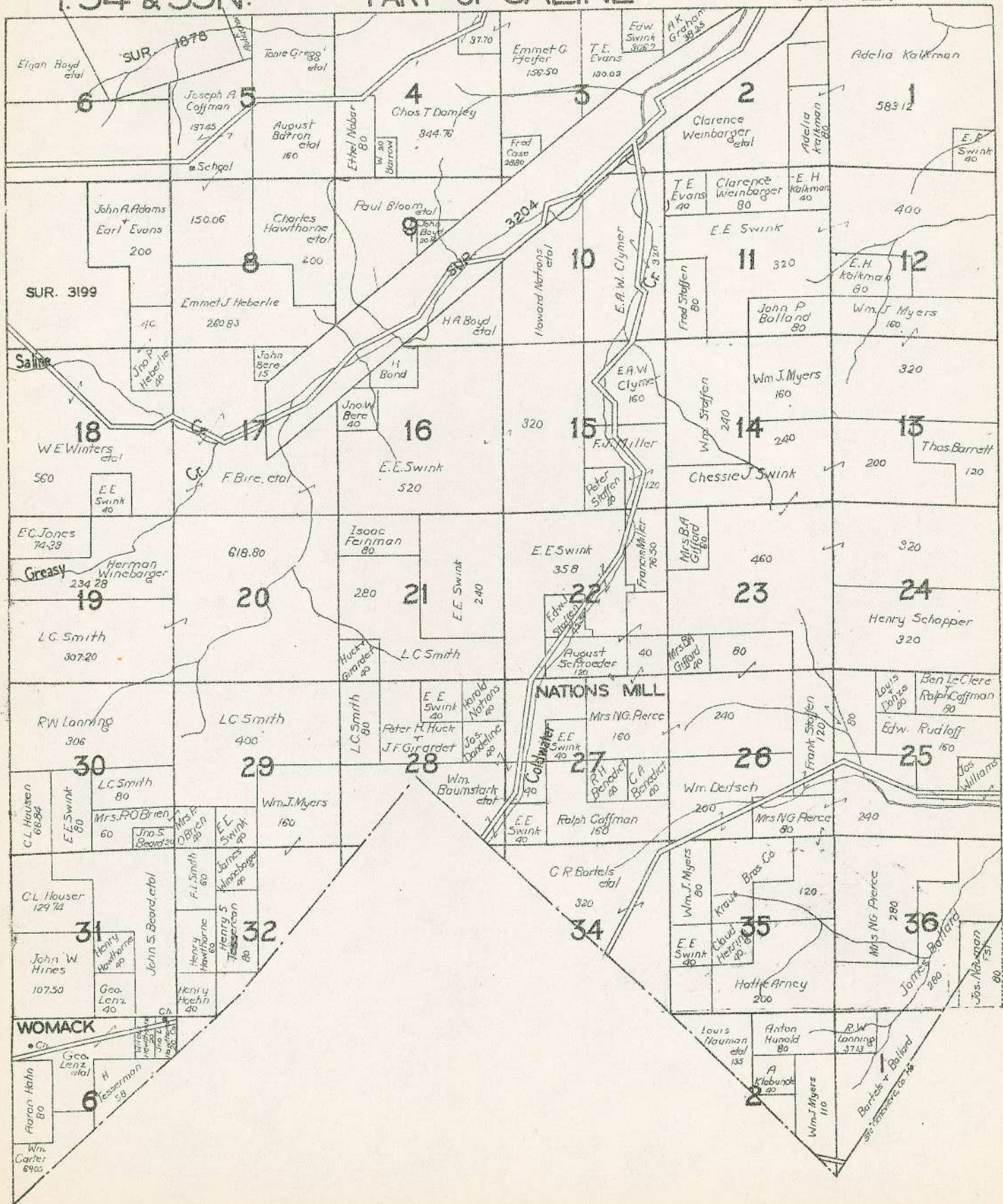


Ste. Genevieve, Mo.

T. 34 & 35 N.

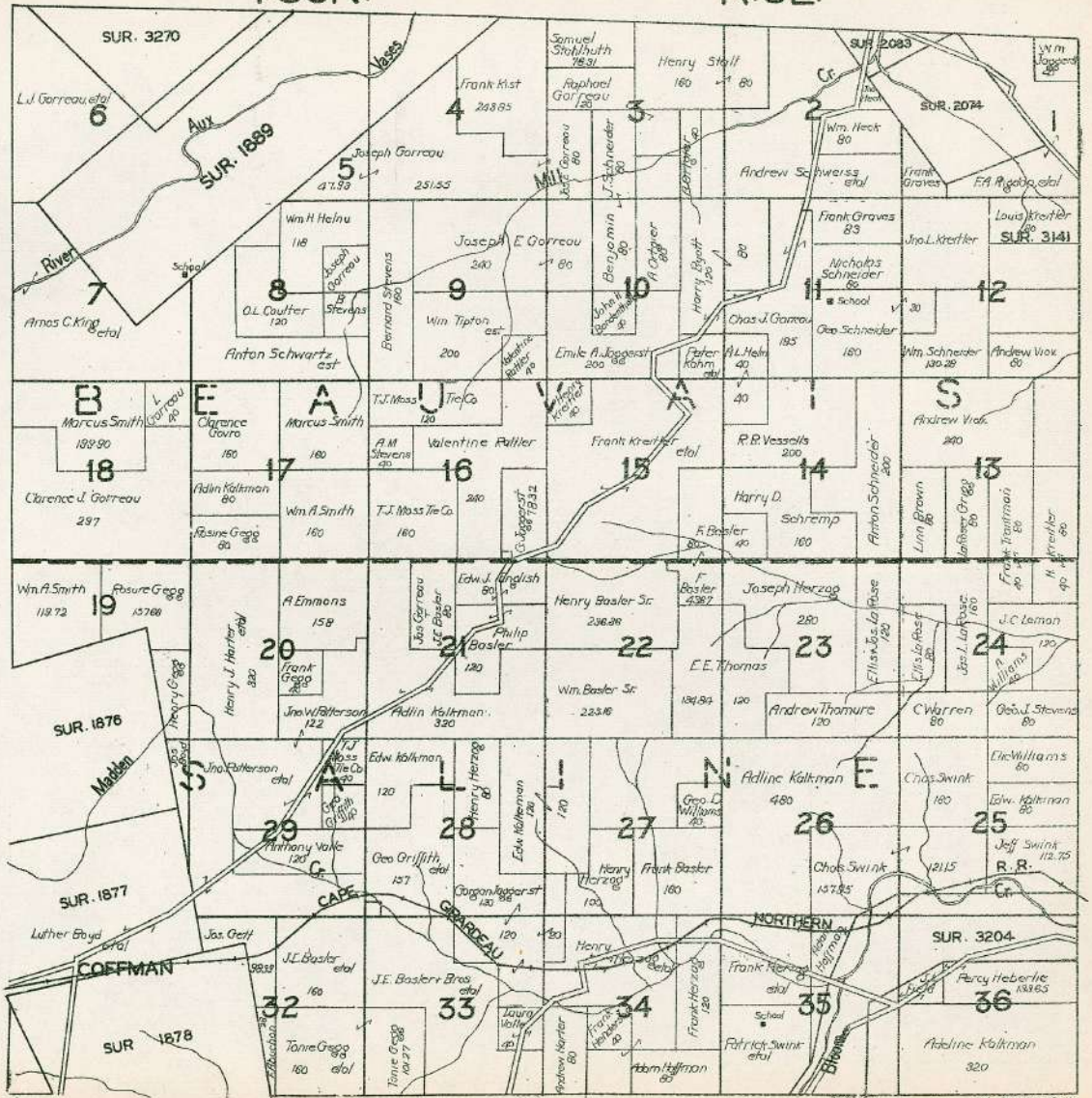
PART OF SALINE

R. 8 E.



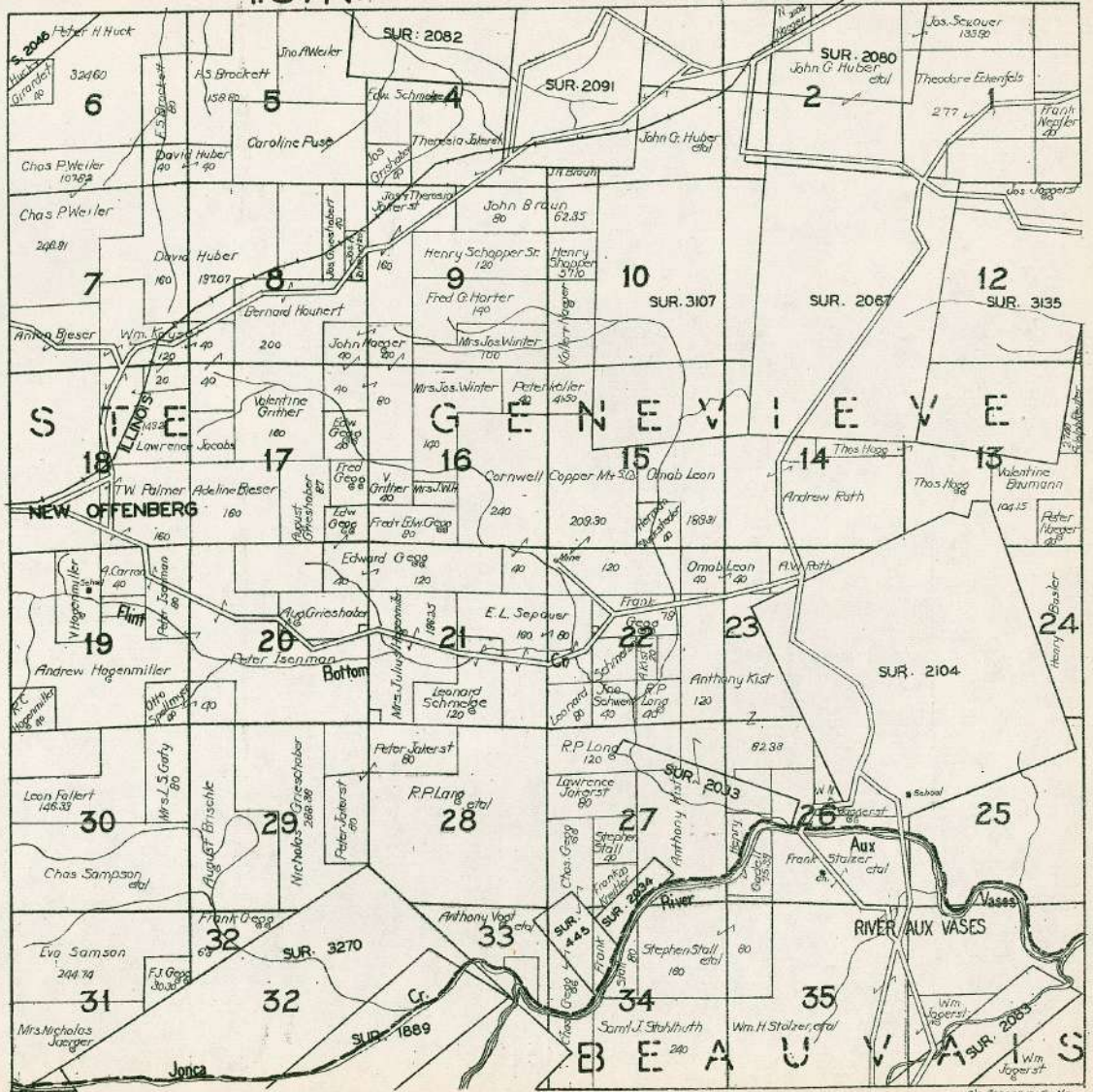
T.36N.

R.8E.



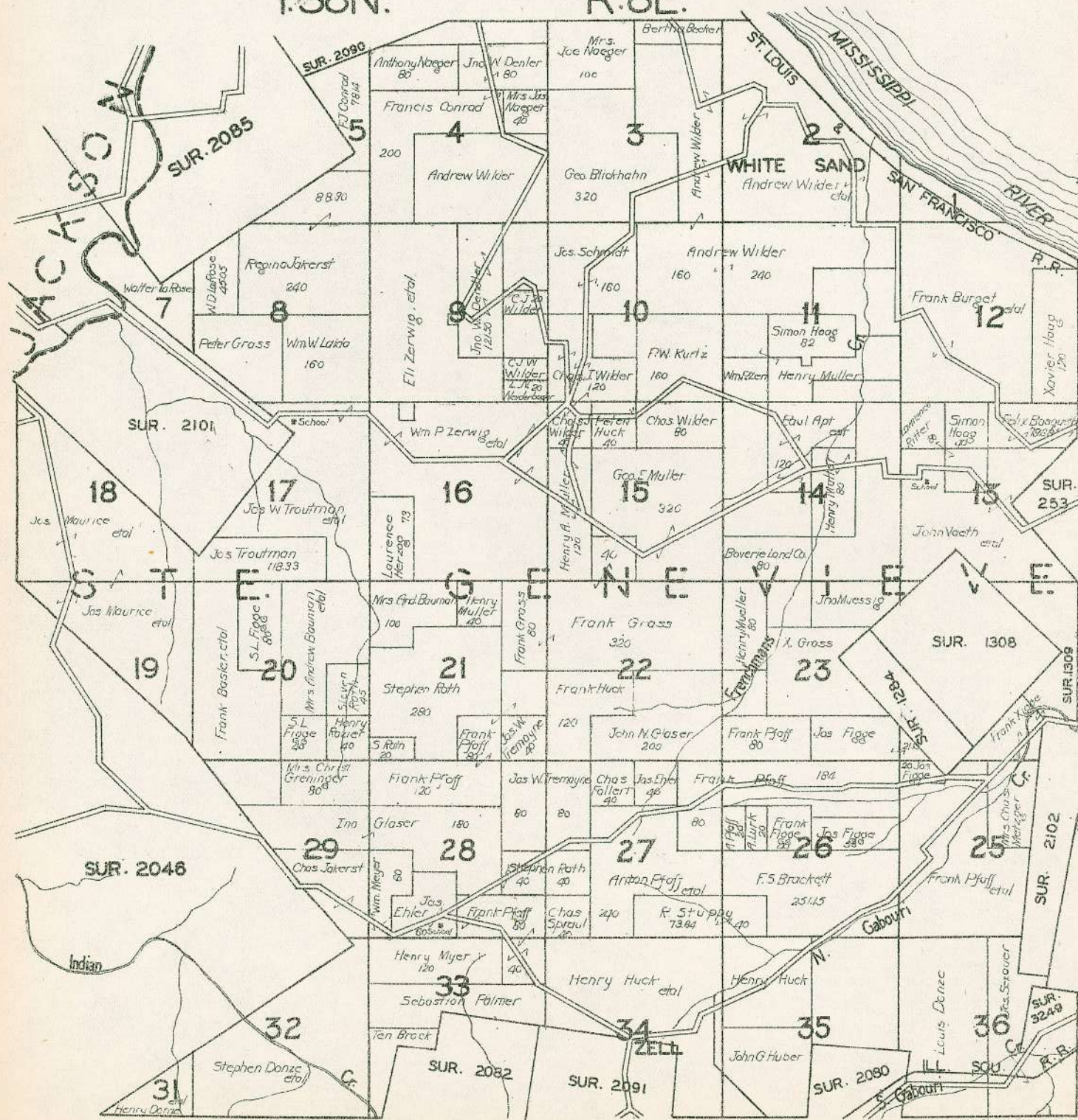
T.37N.

R.8E.

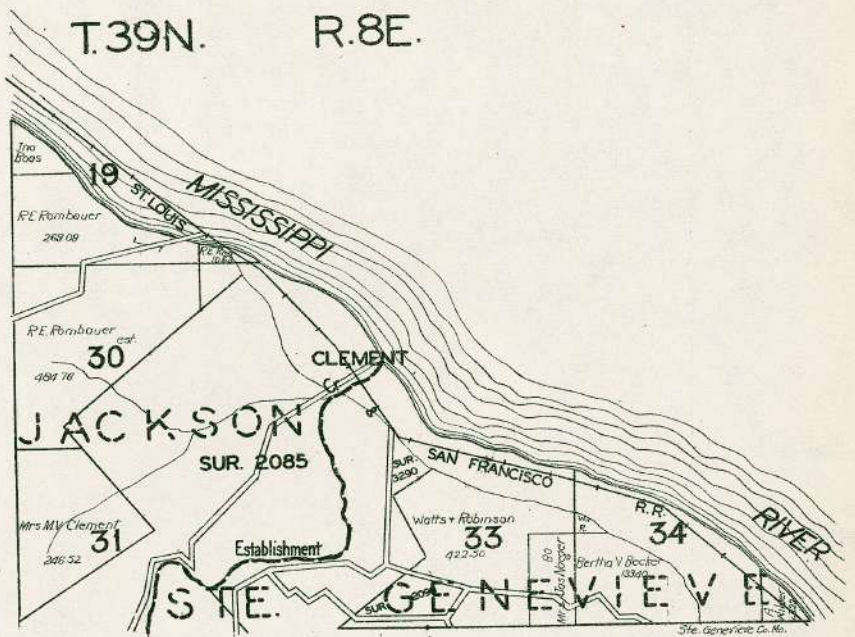


T.38N.

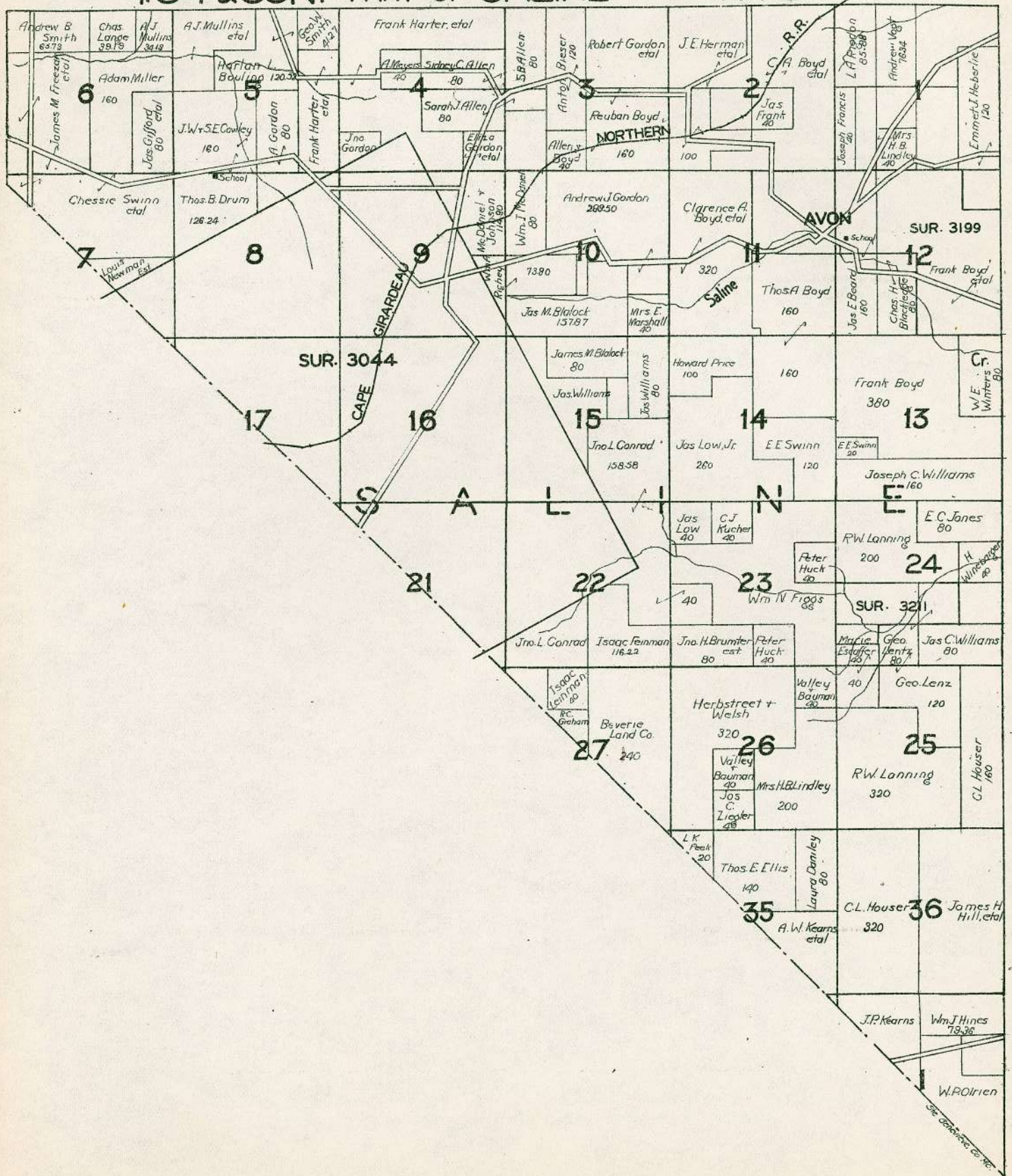
R.8E.



T.39N. R.8E.

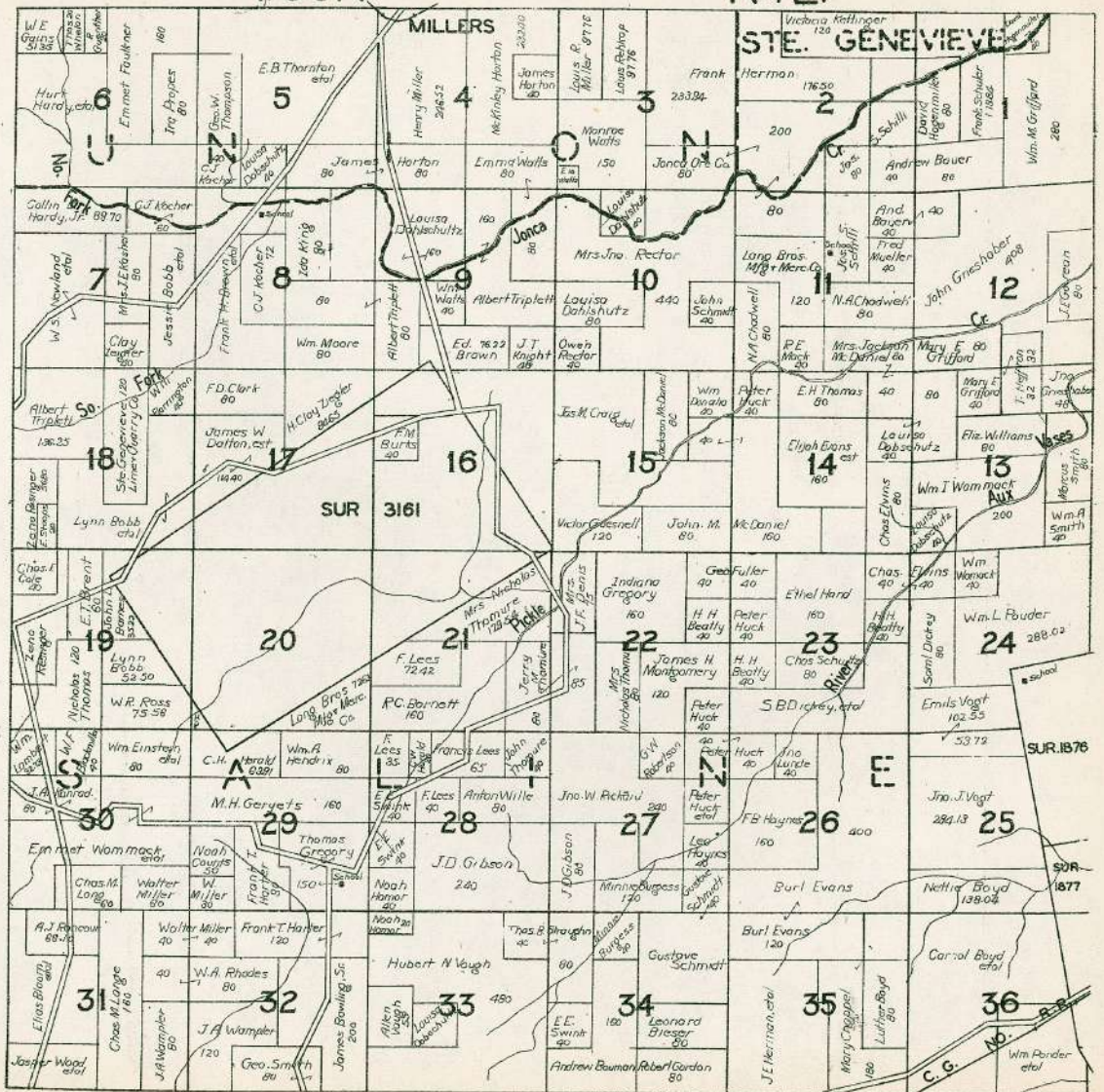


T.34 & 35N. PART OF SALINE R.7E.



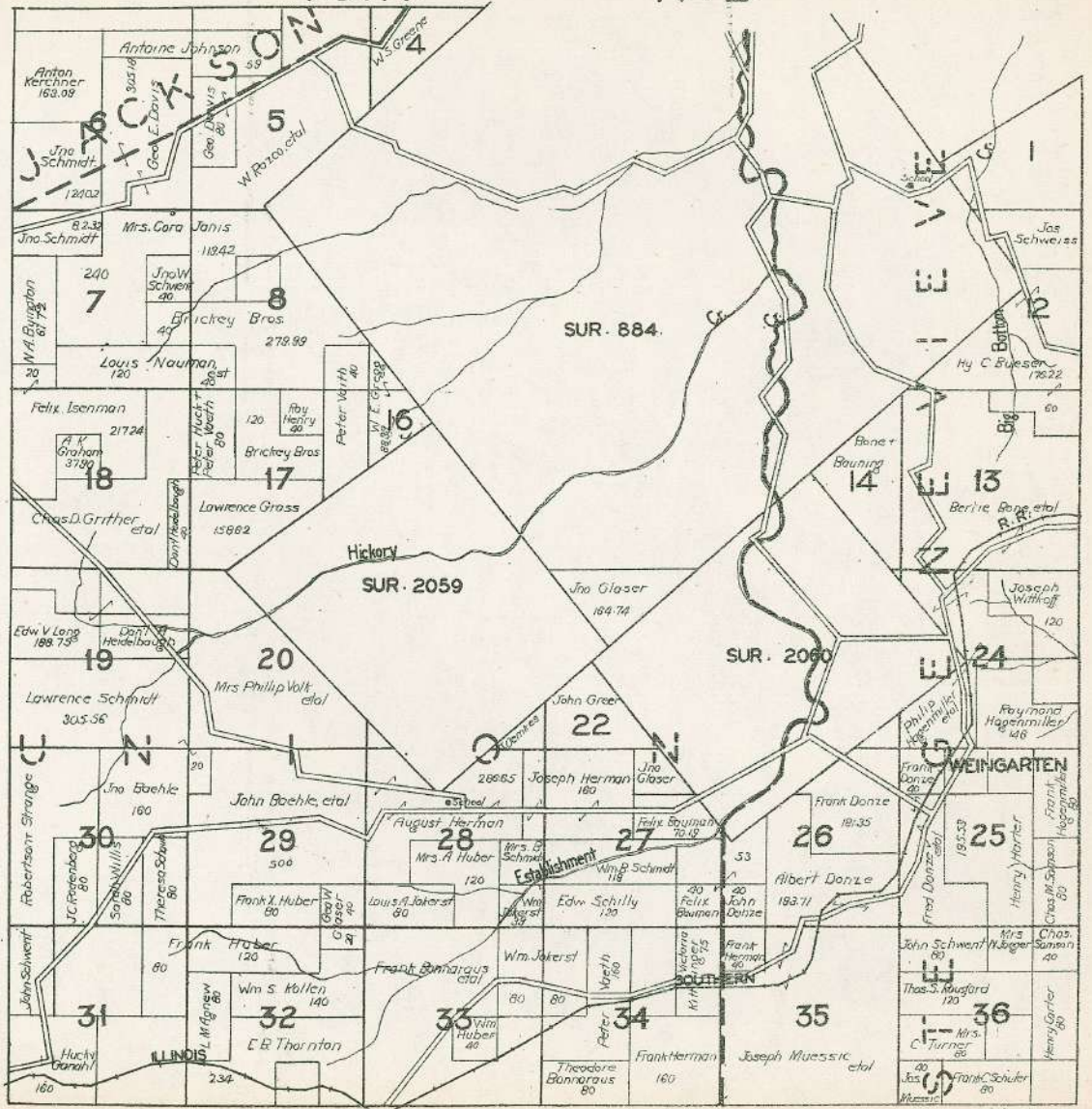
T.36N.

R.7E.



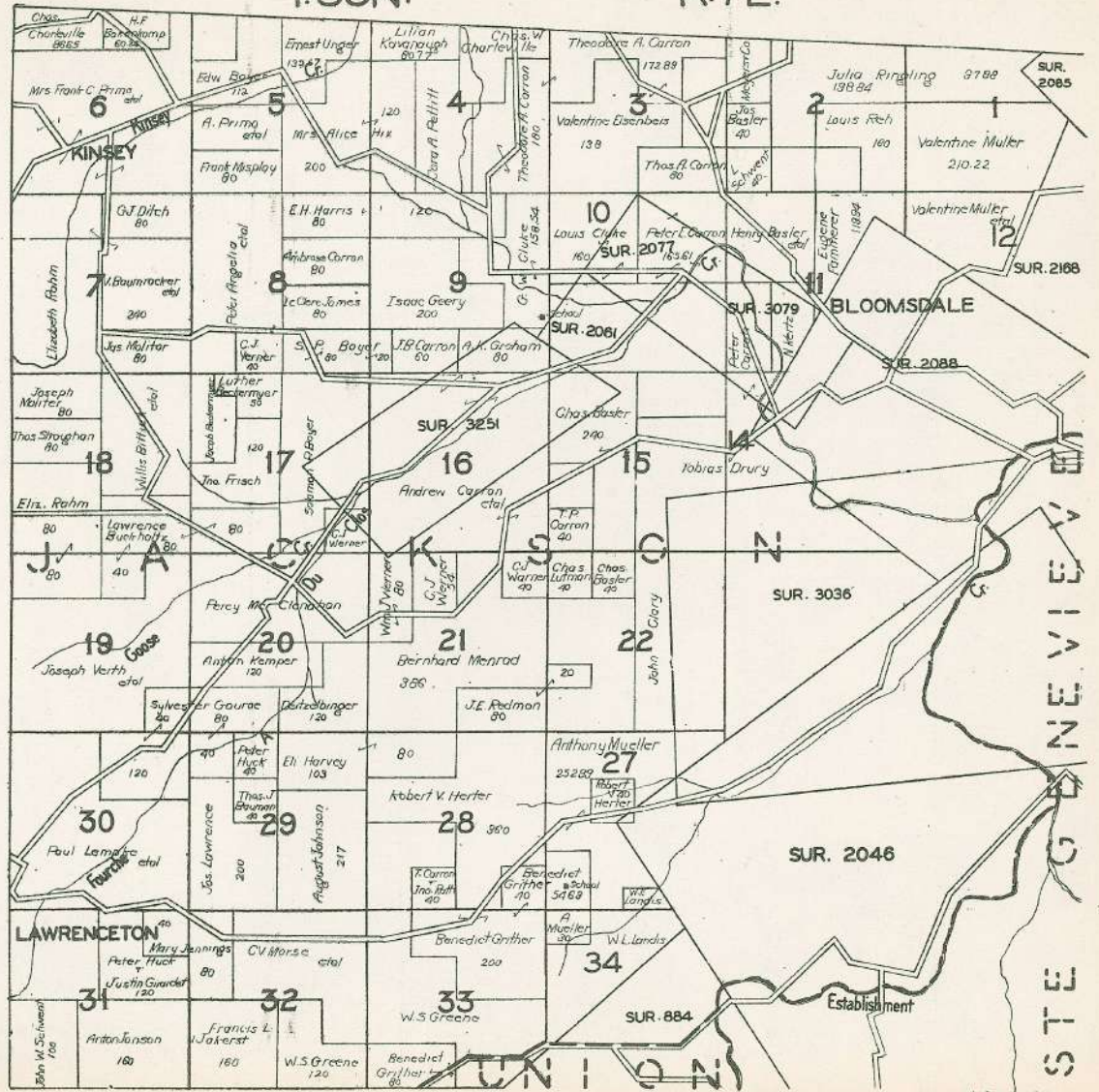
T.37N.

R.7E.



T.38N.

R.7E.

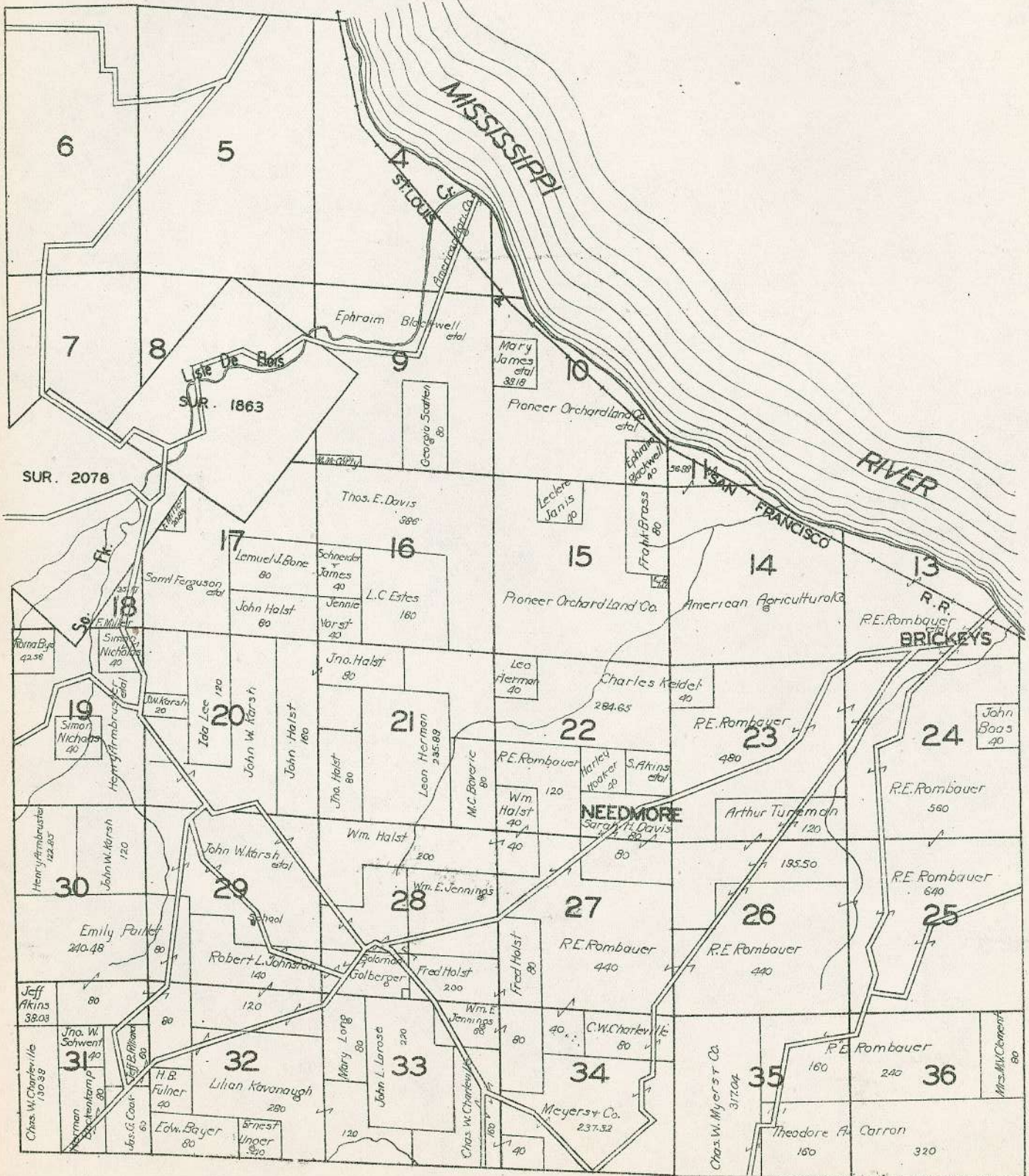


UNION MISSOURI

T.39N.

PART OF JACKSON

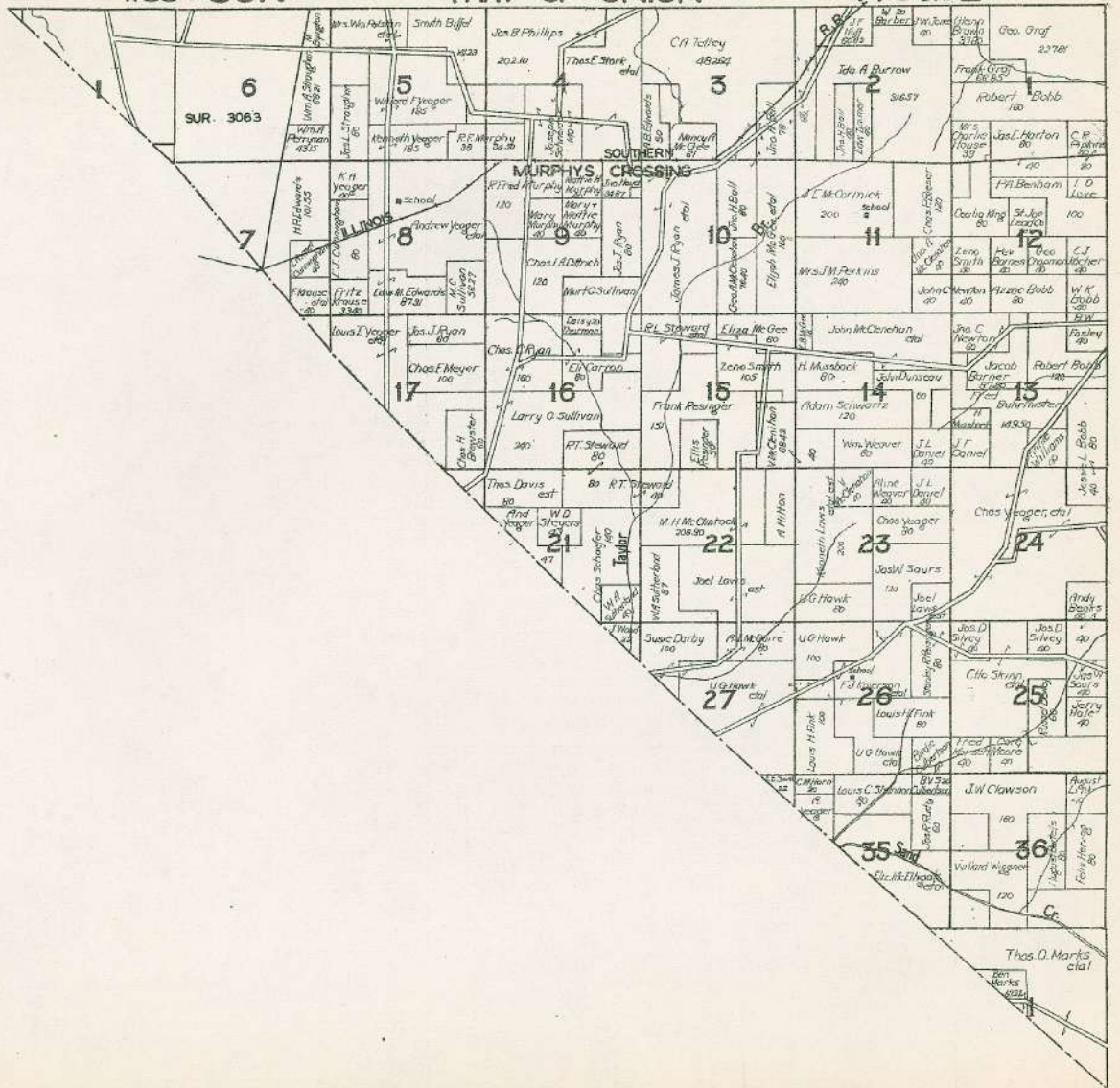
R.7E.



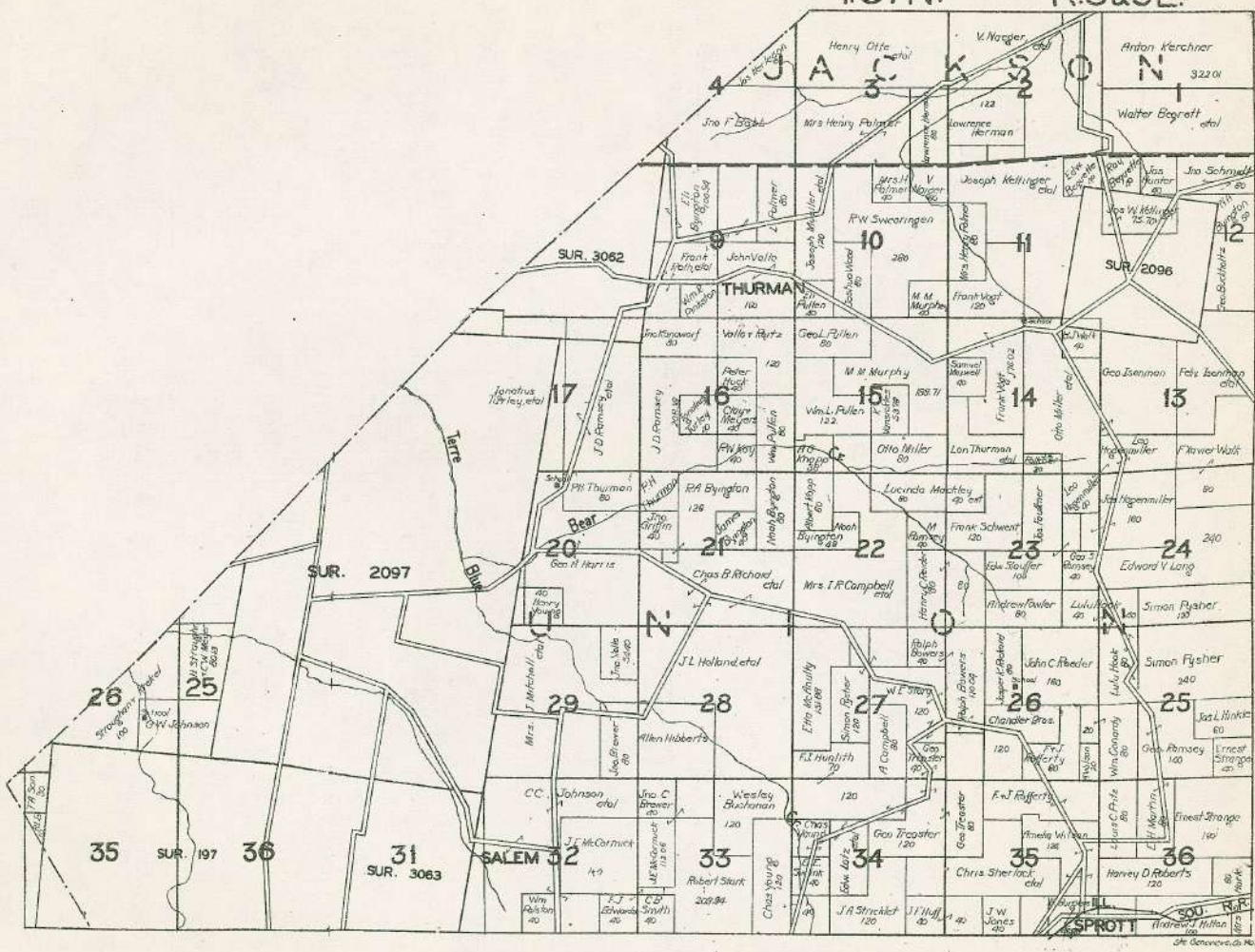
T.35 & 36N.

PART OF UNION

R.5 & 6E.



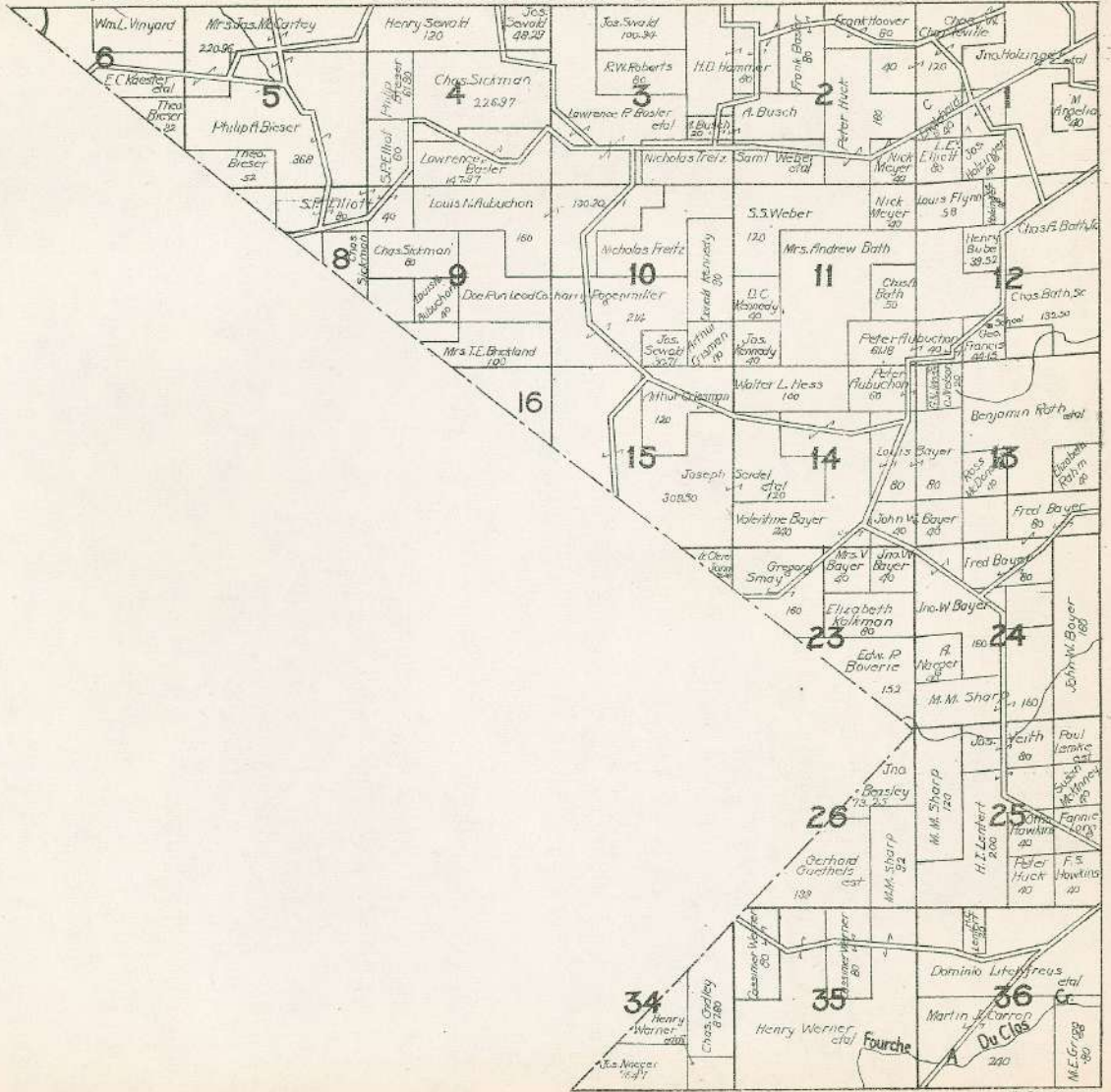
T.37N. R.5&6E.



T.38N.

PART OF JACKSON

R.6E.



T.39N. PART OF JACKSON R.6E.

