

# NESIKA

Published by the Class of 1925  
of the  
Everett High School



*Miss Clara Weber*



MR. BAISDEN  
*Principal*



MR. WILSON  
*Superintendent*





## *Table of Contents*

*Scenes*

*Dedications*

*Seniors*

*Juniors*

*Sophomores*

*Freshmen*

*Faculty*

*Publications*

*Athletics*

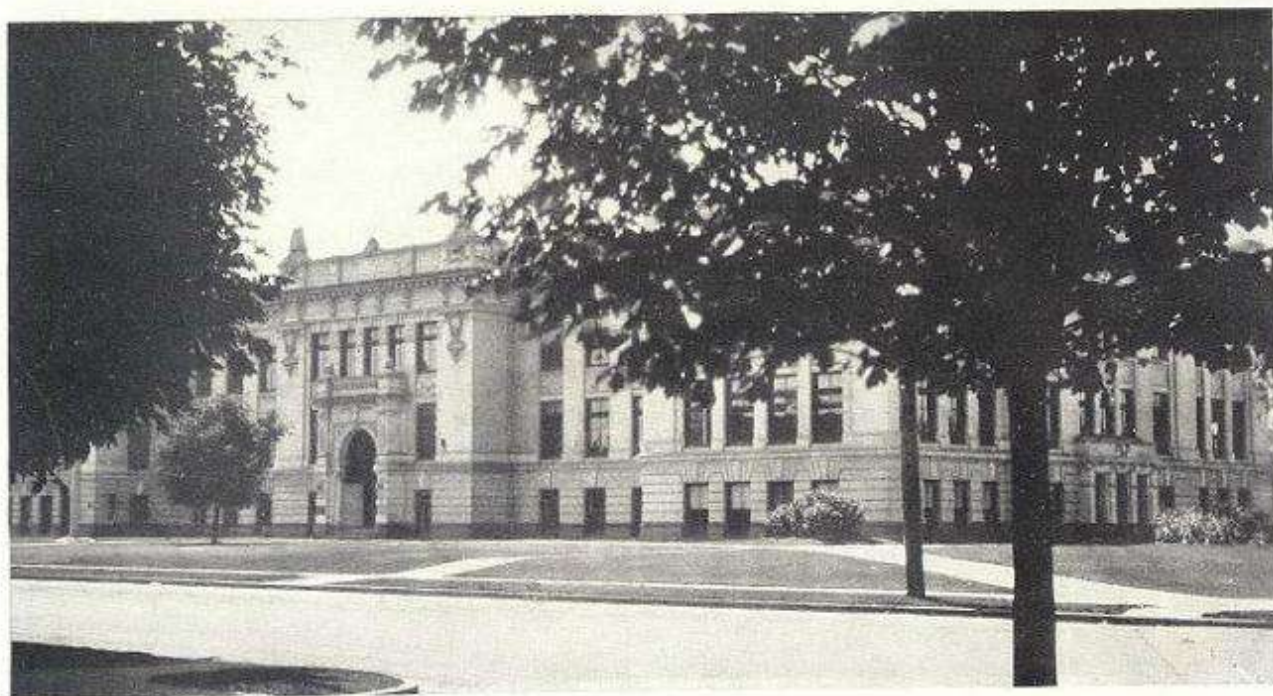
*Organizations*

*Dramatics*

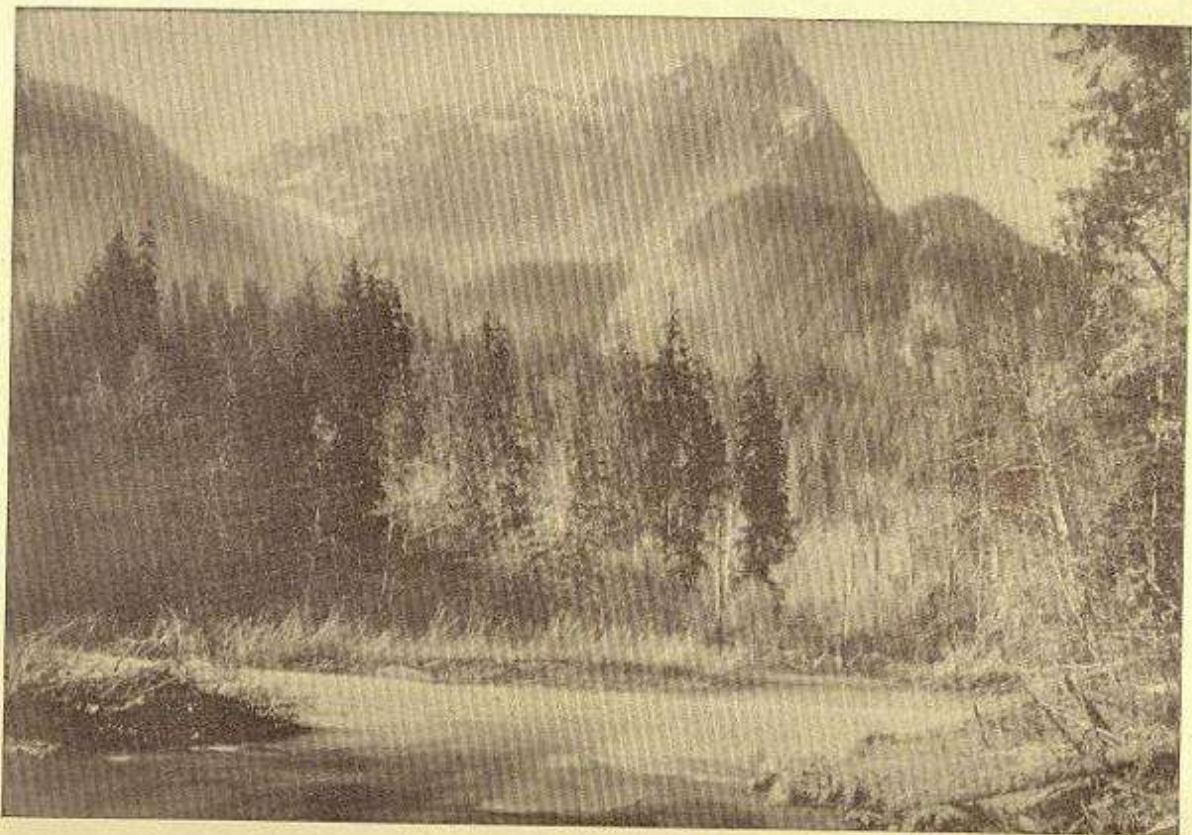
*Activities*

*Music*

*Humor*



*"In those good old High School days."*

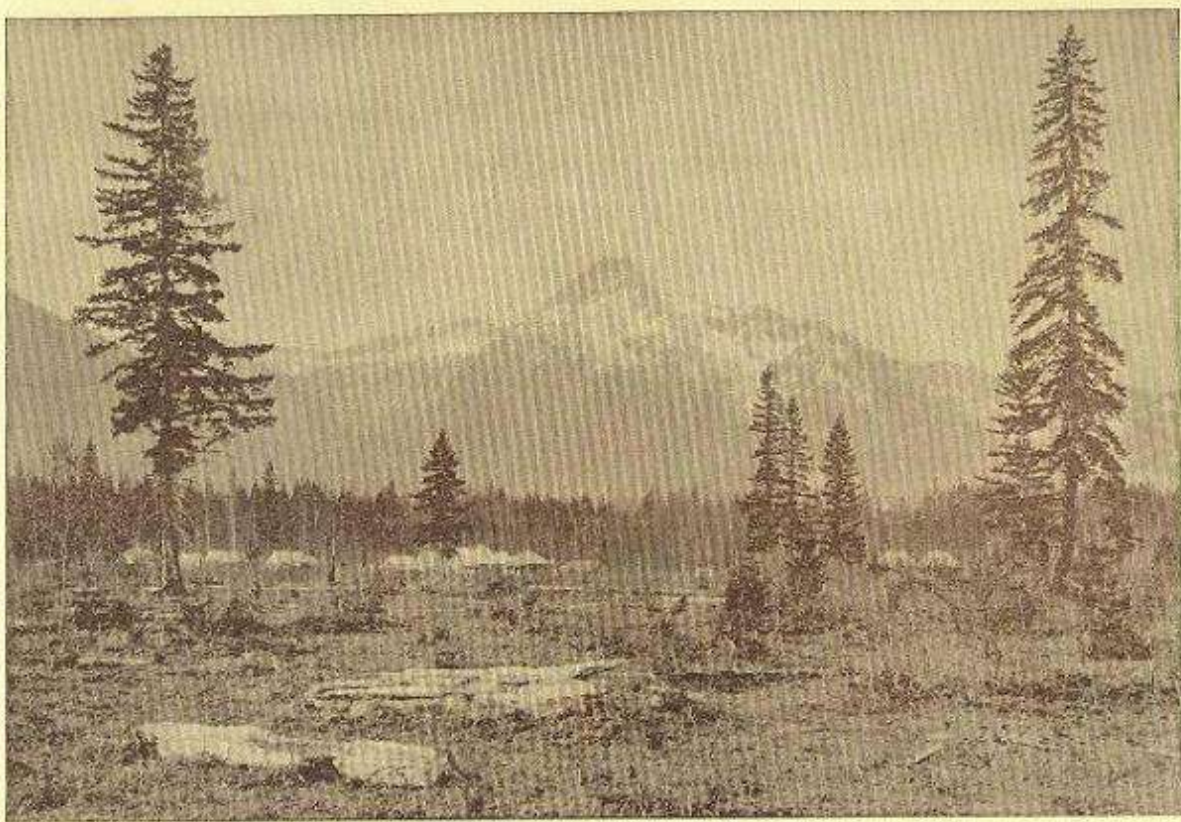


*"Where mighty mountains raise their snowy heads to skies of blue."*

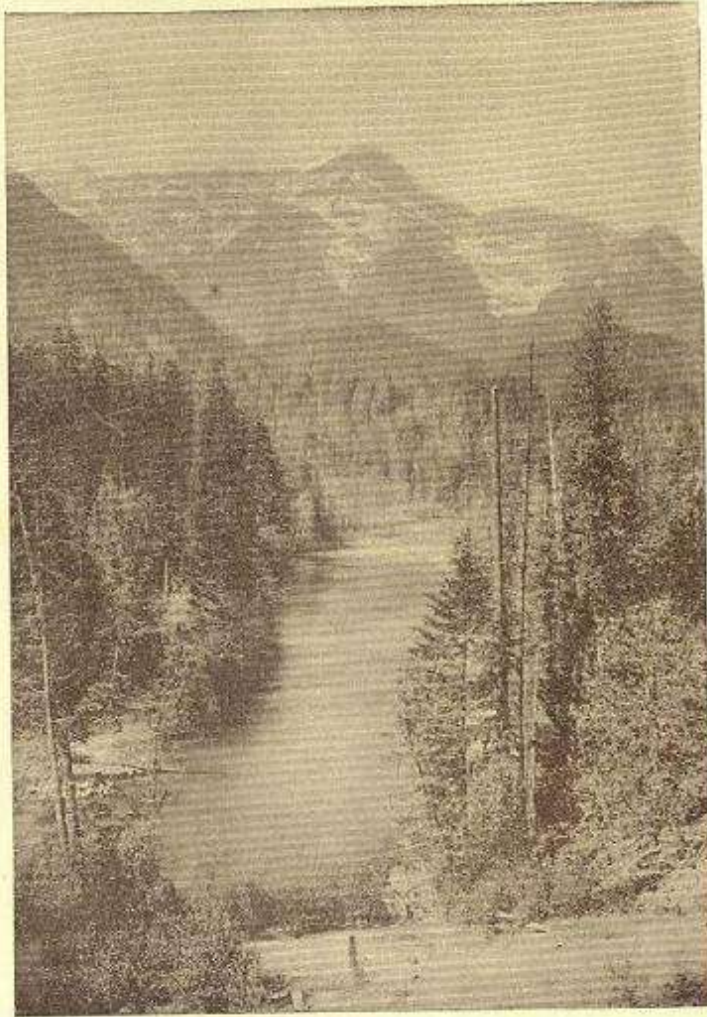
Copyrighted by Asabel Curtis, Seattle

[www.thirdstbooks.com](http://www.thirdstbooks.com)

Copyrighted by Askel Curtis, Seattle



*"What a wonderland of beauty, in the forests and the flowers."*



Copyrighted by Asabel Curtis, Seattle

*"There never was a State more fair than our own Washington."*



## In Memoriam

★★

Mr. J. L. GRIFFIN

*Forth he's fared from work with us  
Forth upon the last great quest;  
This world's fitful fever gone,  
Peaceful now he lies at rest.*

*Long he wrought for others' good,  
Yielding all at their behest,  
Giving heart and mind and soul  
Striving to attain the best.*

*One unselfish life like this  
To the wisest service bent,  
Shows the truest way to use  
All the heavenly talents lent.*

*We at least can truly prove  
Feeling for our long-time friend;  
Be, like him throughout our lives,  
True as steel unto the end.*

—THE WESTERNER.





*Catherine Ross*

### Dedication

To Miss Catherine Ross, in appreciation of her untiring efforts to make our career in High School successful, the class of '25 dedicates this volume of the Nesika.



MISS PARSONS

MR. JENKINS

MISS STURGEON

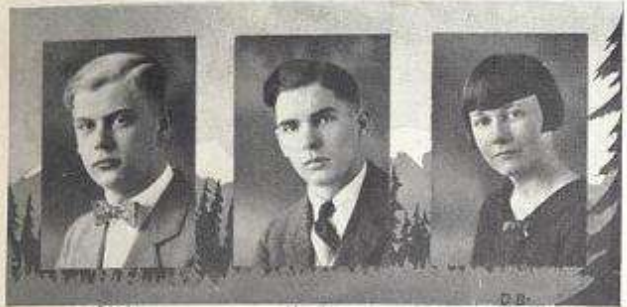
*Anna Sturgeon*

### Dedication

To Miss Parsons, Mr. Jenkins, and Miss Sturgeon, our teachers and advisers, whose advice has attributed much to the success of our class and of this publication, we respectfully dedicate this page.



# SENIOR



John  
SIEVERS  
*President*

Herb  
MAXFIELD  
*Vice-President*

Beryl  
HANSEN  
*Secretary*

### *History of the Class of '25*

We entered old E. H. S. in the fall of '21, three hundred and fifty strong, tinted an emerald hue which would put any patch of clover to shame. Such a bright class, however, would lose no time in blooming. May Sievers guided us through this tender stage.

As Sophomores we established ourselves in many of the school activities. Our athletes began to show their ability, and much to the surprise of the upperclassmen, our girls ran off with the basketball and hockey championships. Adrian Bartholomew led us through this successful year.

When we were Juniors, under the reign of Bryce Wood, we were indeed prosperous. One of our members was on the state debate team; another was business manager of the Kodak. Our class carried away honors in both the boys' and girls' swimming meets.

John Sievers was chosen as our Senior Chief. Our play, "Nothing but the Truth," was a decided success. In football, basketball, baseball and track our men were stars. We again won the swimming meets and the interclass debate championship. We have gained an enviable reputation by our club activities and our Service League membership.

Thus ends the history of one of the most successful classes that ever entered Everett High School.

BERYL WILSON.



ELLEN CARLSON

*"Much can be sold in her  
face."*

Commercial Bookkeeping Course.  
Entered '21.

ROBERT MOXY

*"One hour of glorious life  
Is worth an age without a  
name."*

Scientific Course. Entered '21.  
Science Club; Latin Club;  
French Club; Nesika.

MARIE DAVIES

*"In her eyes gleam friendship  
for all."*

Home Economics Course.  
Entered '21.  
Science Club.

EVERETT EBELS

*"The concentration of pure labor  
is appreciable."*

Commercial Course. Entered '21.  
Orchestra; Candy Sale; Min-  
strel Show; Spanish Club; Mus-  
ic Club; Olympic Club.

MAXINE EBERT

*"Sometimes quiet, sometimes  
disquieting."*

Scientific Course. Entered '21.  
Spartan Club; Intermediate  
Glee.

CLAIRE CHRISTENSEN

*"Silent and good; affectionate  
and shy."*

General Course. Entered '21.  
Chorus; Intermediate Glee;  
Science Club.



EDNA REEP

*"Staid and quiet."*

General Course. Entered '21.  
Hemex Club.

HOMER BEQUA

*"My only looks were women's  
looks,  
And folly's all they've taught  
me."*

History Course. Entered '21.

ELIZABETH DOPH

*"Oh! those brown eyes!"*

Scientific Course. Entered '21.  
Latin Club; Music Club; Sphinx  
Club; Advanced Girls' Glee;  
Candy Sale; Hockey.

RAY VAN PATTEN

*"His crowning glory—his Auburn  
hair."*

Scientific Course. Entered '21.  
H-V; Science Club; Candy  
Sale.

EDITH DINGMAN

*"Not only blonde are beautiful."*

Commercial Secretarial Course.  
Entered '21.  
Commercial Club; Intermediate  
Glee; Chorus.

JOHN TYLER

*"Intelligence is not his only  
virtue."*

Scientific Course. Entered '21.  
French Club; Olympic Club;  
Interclass Debate; Honor Roll.

Phyllis Westlake



Mildred Schuch



**JOHN STEVENS**

*"None but himself can be my parallel."*

General Course, Entered '21.  
Olympic Club; Spanish Club;  
Vice-pres.; Service League;  
Vice-pres.; Senior Class Presi-  
dent; Masqueraders; Football;  
Track; Boy E Club; Candy Sale;  
Mineral Show; Orchestra; Blin-  
d and Gold Mid-year Program.

**CLARA LEE**

*"A quiet, retiring girl."*

General Course, Entered '21.

**WILLARD MELBY**

*"My heart is ready to be melted  
as the glaciers."*

Scientific Course, Entered '21.  
French Club; Candy Sale; Min-  
eral Show; Science Club; Hon-  
or Roll.

**CARRIE LILJA**

*"She does all things well."*

Entered '21.  
Girl Reserve; Candy Sale.

**NORMAN SMITH**

*"A man of wit, a man of sense,  
a man of great accomplish-  
ments."*

General Course, Entered '21.  
Dramatic Club; Masqueraders'  
Club.

**MAXINE MORROW**

*"A friend to everyone."*

General Course, Entered '21.  
Intermediate Glee; Advance;  
Girls' Glee; Music Club; Opera.



**ROBERT LEWIS**

*"It is not good for man to be  
left alone."*

Commercial Course, Entered '21.

**LOLA MEYER**

*"Children should be seen, not  
heard."*

History Course, Entered '21.  
Candy Sale; Girls' Athletic  
Club; Sphinx Club; Spontane-  
ous Club; Art Club; Girl Reserve;  
Hockey; Basketball; Intermedi-  
ate Glee; Chorus.

**ALVIN PETERSHAGEN**

*"Deeper, deeper let us toll  
In the mines of knowledge."*

Electrical Course, Entered '21.  
Boys' Glee; Radio Club; Candy  
Sale.

**ERMA JENKS**

*"Her stature is tall—I hate a  
dumpy woman."*

Scientific Course, Entered '21.  
Dramatic Club.

**ARTHUR PUTNAM**

*"He seems to know the world  
by intuition, and to have  
looked through nature at one  
place."*

Scientific Course, Entered '21.  
Glee Club; Sphinx Club; Service  
League.

**MARY FOGARTY**

*"Her face, ah, it is fair."*

General Course, Entered '21.  
French Club; Latin Club;  
Sphinx Club; Advanced Glee.



**MARY McCORMICK**  
*"Silence is the Mother of Truth"*  
 Scientific Course. Entered '21.  
 Service League; Latin Club;  
 Science Club; Candy Sale; Home  
 Roll.

**DONALD McNEELY**  
*"As a man thinketh in his  
 heart, so is he."*  
 General Course. Entered '21.

**ELENE LARSON**  
*"The very glass of fashion."*  
 Scientific Course. Entered '23.  
 Chorus; Basketball; Dramatic  
 Club.

**LE ROY SLINGERLAND**  
*"'Tis impious in a good man to  
 be sad."*  
 General Course. Entered '21.  
 Candy Sale; Dramatic Club;  
 Minstrel Show; Stage Electric-  
 ity; Football.

**DOROTHY McNEIL**  
*"With tact and cleverness, she  
 manages affairs."*  
 Scientific Course. Entered '22.

**VICTOR LARSON**  
*"Sunday School is my greatest  
 dissipation."*  
 General Course. Entered '21.

Furness Photo



**BEATRICE WALSH**  
*"Goodbye Gloom! Here comes  
 Joy!"*  
 Foreign Language Course.  
 Entered '21.  
 Nesika Staff; Service League;  
 Advanced Girls' Glee; Opera;  
 Masqueraders' Club; Olympic  
 Club; Latin Club; Swimming  
 Meet; Senior Committee; Inter-  
 mediate Glee; Girls' Athletic  
 Club; Chorus.

**SIDNEY WAHL**  
*"Tall, dashing, quick, and fair,  
 Spurns all girls with constant  
 care."*  
 General Course. Entered '21.  
 Basketball; Hi-Y; Candy Sale;  
 Olympic Club; Spanish Club.

**MILDRED BAST**  
*"One she loves, two she loves,  
 three she loves, they say—"*  
 Home Economics Course.  
 Entered '21.  
 Advanced Girls' Glee; County  
 Sale.

**DONALD VAN WINKLE**  
*"Ah, Cornelia, how I love  
 thee!"*  
 Scientific Course. Entered '21.  
 Dramatic Club; Hi-Y (pres.);  
 Candy Sale; Minstrel Show;  
 Service League; Senior Play;  
 Junior Force; Dramatic Club  
 Play; State Debate; Football;  
 Nesika Staff.

**ALICE BERG**  
*"Light-headed only as her  
 ideas."*  
 Commercial Bookkeeping Course.  
 Entered '21.

**EDWARD CRAIN**  
*"His heart is true as steel."*  
 Electrical course. Entered '21.

Chloris Fischer

Elsie Wick



LLOYD GREGER

*"Big and manly."*

History Course, Entered '21.  
Glee Club; Dramatic Club;  
Candy Sale; Minstrel Show;  
Theat. Club.

NANCY HANSEN

Mrs. Pats Weidman

*"She's cute, she's wise;  
She's a terror for her size."*

History Course, Entered '21.  
Chorus; Advanced Girls' Glee;  
Orchestra; Dramatic Club;  
Masterpieces Club; Glee Club;  
Opera; Blue and Gold Mixer;  
Program; Swimming M. C. C.;  
Senior Committee.

WYLIE SMITH

*"A good lad; would that he  
like women better!"*

Scientific Course, Entered '21.  
Science Club; Spanish Club;  
Candy Sale; Honor Roll.

MYRTLE HALVORSEN

*"I have a heart with room for  
every boy."*

General Course, Entered '21.  
Dramatic Club; Chorus.

RALPH SNYDER

*"Give me a hiddy-car, and I am  
happy."*

History Course, Entered '21.  
Candy Sale; Minstrel Show;  
Olympic Club; Spanish Club;  
H. V.

ANNE SORENSON

*"Oh, for the life of an actress!"*

History Course, Entered '21.  
Nesika Staff; Dramatic Club;  
Candy Sale.

MARY WALTER

*"A healthy mind in a healthy  
body."*

General Course, Entered '21.  
Advanced Glee Club; Home  
Club.

JAMES ROWE

*"Pictures forbidden have a re-  
velation."*

History Course, Entered '21.  
Candy Sale; Olympic Club;  
Advanced Boys' Glee Club;  
Football; Spanish Club; Min-  
strel Show.

ELSIE WICK

*"What is this little one think-  
ing about?  
Very wonderful things no  
doubt."*

Home Economic Course,  
Entered '21.  
Home Club; Chorus; Interme-  
diate Girls' Glee.

HAROLD WEISS

*"A mathematical genius."*

General Course, Entered '21.  
Travel Club; Honor Roll;  
Track.

GRACE WHITNEY

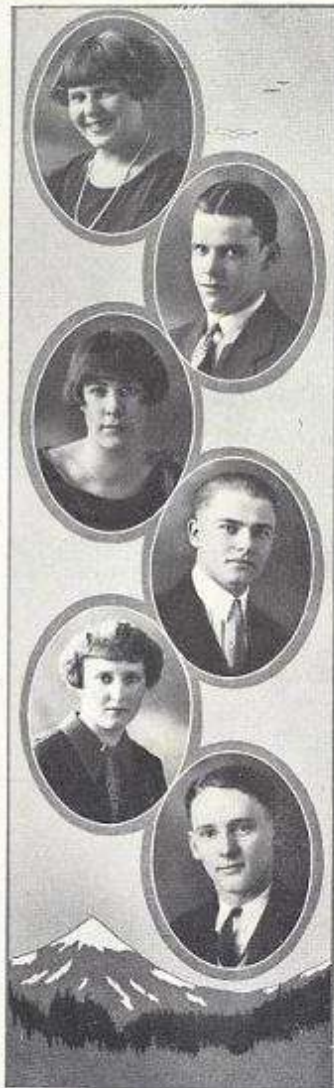
*"Work and worry may kill a  
cat,  
But they cannot kill me."*

Commercial Bookkeeping Course,  
Entered '21.  
Big E. Winner; Chorus; Inter-  
mediate Glee; Candy Sale; Com-  
mercial Club.

EDWARD RINGMAN

*"A pleasant guest."*

Electrical Course, Entered '21.  
Radio Club (pres.).





GRACE ACKERMAN

*"The sweetest girl and the sweetest maid."*

Commercial Bookkeeping Course, Entered '21; Candy Sale; Intermediate Glee; Dramatic Club; Dramatic Club Play.

ANSGAR BERGE

*"Genius must be born and notes can be taught."*

Scientific Course, Entered '21; Honor Roll; Science Club; Candy Sale.

HELEN BALDWIN

*"Beasts of little faith, a small leak will sink a large ship."*

Scientific Course, Entered '21; Dramatic Club; Dramatic Club Play; Dramatic Club—secretary-treasurer; Glee.

LESLIE BITNEY

*"I'm not as bashful as I look."*

General Course, Entered '21; Latin Club; Forensic Club (Sec.); Olympic Club; Business Manager of Kodak; Candy Sale.

RUTH ALLEN

*"If speech were silver, she would be a millionaire."*

General Course, Entered '21.

ESTHER ANDERSON

*"Silence is a friend that will never betray."*

Home Economics Course, Entered '21; Art Club.



HELEN ZEHLE

*"The base, he loves the hill; This lady loves—her will."*

General Course, Entered '21; Blue and Gold Mid-Year Program; Chorus; Basketball; Hockey; Big E Winner; French Club; Advanced Girls' Glee.

HERBERT MANSFIELD

*"All great men die. Ye gods! I feel till myself."*

Scientific Course, Entered '20; Class Vice-President; Basketball; Advanced Boys' Glee; Documentation; Olympic Club; Hi-Y Club; Minstrel Show; Candy Sale; Big E Winner.

JUNE CARBONEAU

*"If I could not go to heaven unless with a party, I would not go there at all."*

Foreign Language Course, Entered '21; Service League; Olympic Club; French Club; Music Club; Hockey; Basketball; Tennis; Candy Sale; Minstrel Show; Intermediate Girls' Glee Club; Accompanist.

JOHN KLAPP

*"With critic judgment scan, And then deny him more if you can."*

Scientific Course, Entered '21; Sphinx Club; Candy Sale; Swimming Meet; Masqueraders' Club.

EDITH VAN DERWERKER

*"Seldom 'cas', seldom 'dout'; Never 'shan', never 'toun'."*

Scientific Course, Entered '20; Big E Winner; Girls' Athletic Club; Honor Roll; Hockey; Basketball; Baseball; Track; Tennis; Service League—secretary-treasurer; Masqueraders; French Club—president; Latin Club; Sphinx Club; Secretary Sophomore Class; Nesika Staff; Candy Sale.

MARIAN SHAW

*"The girl with a freckled face, Happy in any place."*

Scientific Course, Entered '21; Nesika Staff; Candy Sale; Masqueraders; Dramatic Club; Dramatic Club Play; Senior Committee.

Vesta Larson



NESIKA

*E. E. G. G. G.*  
*Mrs. Gerald*  
*McDonald*



**ELSIE RASMUSSEN**  
*"To act that each tomorrow  
 shall find her better than  
 today."*

Scientific Course. Entered '21.  
 Intermediate Glee; Art Club;  
 Girls' Athletic Club; Girl Bu-  
 serves. Blue and Gold Midyear  
 Program.

**ALBERT ZIMMERMAN**  
*"When duty whispers low,  
 'Thou must!'  
 Our Zimmo says, 'I can!'"*

Scientific Course. Entered '21.  
 French Club; Science Club;  
 Football; Track; Minstrel Show.

**ELIZABETH DONOHO**  
*"Them eyes!"*

Commercial Secretarial Course.  
 Entered '21.  
 Spanish Club; Chorus; Candy  
 Sale.

**JAMES KAISER**  
*"I'm my own boss."*

Scientific Course. Entered '21.

**GLADYS PHILIPOTEAUX**  
*"So quiet and so calm."*

Commercial Secretarial Course.  
 Entered '21.  
 Candy Sale; Chorus; Interme-  
 diate Glee; Art Club.

**ARNELL JOHNSON**  
*"The top is far away, but I'll  
 get there."*

Scientific Course. Entered '20.  
 Re-entered '22.  
 Mathematics Club; Dramatic  
 Club; Science Club.

NESIKA



**LOUISE STIGER**  
*"She has a voice of gladness,  
 and a smile of elegance  
 and beauty."*

Foreign Language Course. En-  
 tered '20 1/2.  
 Chorus; Latin Club; Solifon  
 Club; Masqueraders' Club;  
 Candy Sale; Comic Opera; Ad-  
 vanced Girls' Glee; Intermedi-  
 ate Glee.

**JOHN STEPHENS**  
*"Johnny is his name."*

Scientific Course. Entered '21.  
 Science Club; Latin Club; Can-  
 dy Sale; Minstrel Show.

**AURELIA SOSSAMAN**  
*"Always laugh when you can;  
 it is cheap medicine."*

Foreign Language Course. En-  
 tered '21.  
 Latin Club; Science Club;  
 Solifon Club; Intermediate  
 Glee.

**ALLEN SPENCE**  
*"A good heart is a letter of  
 credit."*

History Course. Entered '21.

**RUTH PEDERSON**  
*"Common sense is not so  
 common."*

Commercial Secretarial Course.  
 Entered '21.  
 Chorus; Spanish Club; Candy  
 Sale.

**ERNEST WOHLHUTER**  
*"I would if I could,  
 if I couldn't, how could I?"*

Carpentry Course. Entered '22 1/2.

Mrs. Mark Mansfield



**VESTA LARSON**

*"Lovely things belong to thee by right."*

Scientific Course. Entered '21. Girls' Athletic Club; Big E Winner; Dramatic Club Play; Senior Play; Dramatic Club; Sphinx Club; Olympic Club; Masqueraders; Blue and Gold Mid-year Program; Class Officer; Nesika Staff; Candy Sale; Service League.

**WILLIAM TIERNEY**

*"William Tierney is so small, A rat could eat him but need all."*

General Course. Entered '21. Honor Roll.

**SARA STAPLETON**

*"Her air, her manner, All who see admire."*

General Course. Entered '22. Advanced Girls' Glee; Masqueraders' Club; Dramatic Club Play; Senior Committee; Blue and Gold Mid-year Program.

**HUGH MCGUINNESS**

*"When little Leap Year trips into the woods again, I shall no longer be bashful."*

History Course. Entered '21. Dramatic Club; Masqueraders Club; Olympic Club; Dramatic Club Play; Candy Sale; Nesika Staff; Musical Show.

**ELIZABETH MUNGER**

*"When Elizabeth Munger passes by, You're sure to say, 'There's one who'll try?'"*

General Course. Entered '20 1/2. Advanced Glee; Intermediate Glee; Sphinx Club; Dramatic Club; Music Club; Opera.

**STEWART MCINTIRE**

*"What he undertook to do, he did."*

Scientific Course. Entered '21.

**MARIAN PAYZANT**

*"Did she discourse, I will not chide, she said."*

Foreign Language Course. Entered '21. Service League; Latin Club; Sphinx Club (pres.); French Club; Blue and Gold Mid-year Program; Candy Sale; Declaration; Inter-class Debate; Orchestra; Nesika Staff.

**BRYCE WOOD**

*"Manners are the fruit and perfect follower of noble character."*

Commercial Bookkeeping Course. Entered '21. Honor Roll; Service League; Candy Sale; Class President; Sphinx Club; Dramatic Club; Masqueraders' Club; Hi-Y; Dramatic Club Play; Nesika Staff; Kodak Staff.

**KATHRYN RAGSDALE**

*"Our editor, the poached egg, so called because she could be beaten."*

History Course. Entered '22. Editor Nesika; Kodak Staff; Inter-class Debate; Service League; Dramatic Club; Masqueraders' Club; Girls' Athletic Club; Basketball; Hockey; Baseball; Olympic Club; Candy Sale; Big E Winner; Honor Roll.

**BERYL WILSON**

*"Love sick Beryl, he loves romance, Many fair maids have led him a dance."*

Scientific Course. Entered '21. Kodak Staff; Nesika Staff; Science Club; Service League; Hi-Y Club (sec.); Musical Show; Olympic Club; Candy Sale; Sphinx Club; Latin Club; Four Year Honor Roll.

**MARY TORREY**

*"An ounce of her self is worth ten of other folks."*

Foreign Language Course. Entered '21. Service League; Girls' Athletic Club; Latin Club; Science Club; Masqueraders' Club; Olympic Club; Senior Committee; Advanced Girls' Glee (pres.); Big E Winner; Candy Sale; Dramatic Club Play; Opera.

**CLARENCE DOCKA**

*"Clarence can drive miles without yawning, Clarence can do things that are fine."*

*Clarence is known as a 'Who Who!' And Clarence is good on the line."*

General Course. Entered '21. Football; Track; Dramatic Club; Hi-Y; Olympic Club; Nesika Staff.





LESTER HOISINGTON

"I see a man after my own heart."

General Course, Entered '22.  
Candy Sale.

THELMA BUTLER

"Best she is liked, who is alike to all."

Foreign Language Course, Entered '21 1/2.  
Service League; Dramatic Club; French Club; Masqueraders Club; Music Club; Advanced Girls' Glee; Intermediate Girls' Glee; Opera; Hockey.

ROSALIE HOFFLER

"Studies work and is successful."

History Course, Entered '21.  
Latin Club; Sphinx Club; Chorus; Advanced Girls' Glee; Opera.

OWEN HAZELTON

"Girls are nice."

General Course, Entered '21.

ELLA GOFF

"She's all my fancy painted here; She's lovely, she's divine."

General Course, Entered '21.  
Intermediate Glee; Advanced Girls' Glee.

AVRY PARST

"Girls are his hobby—but don't tell 'em."

Commercial Bookkeeping Course, Entered '19; re-entered '22.  
Glee Club; Candy Sale; Minstrel Show; Sphinx Club; Thrift Club.



ARLENE SPENCER

"A tiny little girl."

Commercial Secretarial Course, Entered '21.  
Commercial Club.

AUBREY MOUNGER

"Captain of our football team, And such a jolly fellow!"

General Course, Entered '21.  
Service League; Football (Captain); Baseball; Class Officer; Sphinx Club; Olympic Club; Big E. Club; Candy Sale.

THORA NEWELL

"She lives most who thinks so."

Home Economics Course, Entered '21.  
Chorus; Home Club (pres.).

CASPER MONSON

"—but my actions speak."

General Course, Entered '20 1/2, re-entered '22 1/2.  
Football; Olympic Club.

EVELYN TAWLKS

"In manners, gentle; in affection wild."

History Course, Entered '21.  
Sphinx Club; Dramatic Club; Declamation; Candy Sale; Scholarship Winner; Dramatic Club Play.

HELEN STUBBS

"Life means something to the capable."

Commercial Stenographic, Entered '21.  
Commercial Club.



**MAY SIEVERS**

*"She is a Master of Music."*

General Course. Entered '20½.  
Class officer; Chorus; Glee; Orchestra (pres.); Candy Sale; Music Club.

**JUNE SIEVERS**

*"What would Winter do without June?"*

Scientific Course. Entered '20½.  
Orchestra; Candy Sale; Music Club; French Club (pres.); Nesika Staff; Science Club (sec.); Junior Life Saving; Girls' Athletic Club; Swimming Meet; Chorus; Hockey; Track; Baseball; Basketball; Tennis; Advanced Girls' Glee Club.

**JOHN SPONEK**

*"Headless of grammar they all cry  
That's Him!"*

General Course. Entered '22.  
Radio Club.

**ELIZABETH GABLE**

*"Can she tickle the ivories?  
Oh, Boy!"*

Foreign Language Course.  
Entered '21.  
Service League; Big E Winner; Advanced Girls' Glee; Orchestra; Chorus; Nesika Staff; Swimming Meet; Blue and Gold Mid-year Program; Latin Club; Dramatic Club; Girls' Athletic Club; Comic Opera.

**EVERETT GRAY**

*"And if I laugh at any mortal thing,  
Tis that I may not weep."*

Scientific Course. Entered '21.  
Declamation; Dramatic Club; Play; Mandrel Show; Candy Sale; Dramatic Club; Science Club; Glee Club; Senior Committee; H-Y.

**HANNAH CHADWICK**

*"A Spirit free as hers, is always pure."*

Commercial Secretarial Course.  
Entered '21.



**LEONIS ENGER**

*"Up, up, my friend, and quit your books."*

Commercial Secretarial Course.  
Entered '21.  
Commercial Club; Sphinx Club; Candy Sale; Chorus.

**LILLIAN ELDRIDGE**

*"Prudent, quiet, and ever right."*

Commercial Bookkeeping Course.  
Entered '21.  
Sphinx Club; Science Club; Commercial Club; Candy Sale; Chorus.

**PHYLLIS ESTY**

*"Zealous, yet modest."*

Commercial Secretarial Course.  
Entered '21.  
Commercial Club; Thrift Club; Sphinx Club; Candy Sale; Intermediate Glee; Chorus.

**ETHEL BURK**

*"Talent is something, but tact is everything."*

General Course. Entered '20; re-entered '24.

**IDA BURKES**

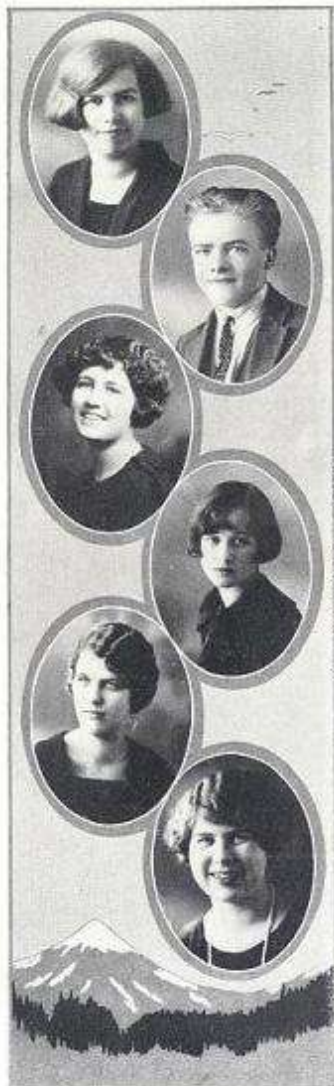
*"Nothing great was ever achieved without enthusiasm."*

Scientific Course. Entered '24.  
Sputtering Club.

**MARGUERITE RODGERS**

*"Good nature plus sincerity equals her."*

Scientific Course. Entered '21.  
Glee Club; Latin Club; Science Club; Chorus; Hockey.



**ELIZABETH DAVIES**  
*"'Tis noble to be good."*  
 Foreign Language Course, Entered '20.  
 Sphinx Club; French Club;  
 Music Club; Declamation;  
 Service League; Honor Roll.

**ELLIS MURPHY**  
*"I take to a very serious thing."*  
 General Course, Entered '25.

**VELMA DAVIES**  
*"Right noble is thy work."*  
 Foreign Language Course, Entered '21.  
 Advanced Girls' Glee; Opera.

**HELEN CARLSON**  
*"Loved by one, loved by all."*  
 General Course, Entered '21.  
 Latin Club; Olympic Club;  
 Messengers' Club; Girls' Athletic Club; Big E. Winner;  
 Hockey; Basketball; Candy Sale; Blue and Gold Mid-year Program; Opera; Senior Committee; Advanced Girls' Glee.

**RUBY GETCHELL**  
*"Let me be blessed for the peace I make."*  
 Scientific Course, Entered '21.  
 Science Club.

**LUCILLE JOHNSON**  
*"Impossible is a word I never use."*  
 Commercial Bookkeeping Course, Entered '21.  
 Chorus; Commercial Club.

Mrs. Robert Morrison Tregan



**VIOLA KJELSTAD**  
*"I'm partial to a football player."*  
 General Course, Entered '20.  
 Dramatic Club; Olympic Club;  
 Candy Sale; Chorus; Dramatic Club Play.

**GEORGE NELSON**  
*"I have found the girl at last."*  
 General Course, Entered '17; re-  
 entered '22.  
 Football; Basketball Manager;  
 Dramatic Club Play; Junior Recital.

**EVALINE THOMPSON**  
*"All the world loves a quiet girl."*  
 Foreign Language Course, Entered '22.  
 Latin Club; French Club;  
 Sphinx Club; Girls' Athletic Club; Baseball; Hockey; Chess; Tennis; Intermediate Glee; Honor Roll.

**RAY MONTGOMERY**  
*"I hope to merit heaven."*  
 Commercial Bookkeeping Course, Entered '21.  
 Football; Minstrel Show; Baseball.

**EMMA KORNIETZ**  
*"Thinks and speaks for herself."*  
 Commercial Secretarial Course, Entered '21.  
 Olympic Club (see press);  
 Inter-class Debate; Candy Sale;  
 Basketball; Hockey.

**ARTHUR KNAPP**  
*"Some say I'm bashful, so bashful, but—"*  
 General Course, Entered '21.  
 Radio Club; Honor Roll.

Mrs. George Nelson

Miss Genevieve P.

Viola Kjelstad



**MAY KLOPPENSTEIN**  
*"Verse and May go together,  
 they say—we know it."*  
 General Course. Entered '21.  
 Dramatic Club; Thrift Club;  
 Chorus.

**MYRA TREETS**  
*"Her life is calm, private and  
 contemplative."*  
 General Course. Entered '21.  
 Intermediate Glee.

**VELMA KYES**  
*"Sincerity is the fact of the  
 soul."*  
 History Course. Entered '21.  
 Sphinx Club.

**DOROTHEA WAHLMACHER**  
*"It's good to be merry and  
 wise."*  
 General Course. Entered '22.  
 Inter-class Debate; Masquerade  
 Club; Girl Reserve; Girls'  
 Athletic Club; Spanish Club;  
 Intermediate Glee.

**RUSSELL TAYLOR**  
*"Quality plus quantity."*  
 Electrical Course. Entered '21.  
 Radio Club (vice-pres.); Can-  
 day Sale.

**CECIL HULYS**  
*"Earnest, sincere and kind."*  
 General Course. Entered '21.



**GLADYS SHARP**  
*"A smile for all."*  
 Commercial Course. Entered '21.  
 Latin Club; Commercial Club;  
 Candy Sale.

**ROY SCHLEGEL**  
*"I'm a little poetic flower,  
 Growing wilder every hour!"*  
 History Course. Entered '21.  
 Nesika Staff; Dramatic Club;  
 Science Club (vice-pres.); Can-  
 day Sale; Sphinx Club; Minstrel  
 Show.

**HAZEL SEAMAN**  
*"She spoke little,  
 But her thoughts were big."*  
 General Course. Entered '21.  
 Chorus; Intermediate Glee; Ad-  
 vanced Girls' Glee; Music Club;  
 Opera.

**MARVIN SHOLBERG**  
*"A strong determination will  
 bring him success."*  
 General Course. Entered '21.  
 Candy Sale; Honor Roll.

**ANNIE NELSON**  
*"And in her mind dwells knowl-  
 edge."*  
 General Course. Entered '21.  
 Honor Roll.

**EDNA NOYES**  
*"She has just as much fun, —  
 As she has good sense."*  
 Commercial Course. Entered '21.  
 Commercial Club; Intermediate  
 Glee Club; Chorus.



Michael Fisher

**BERNICE BODDY**

*"In each cheek appears a pretty dimple."*

Foreign Language Course, Entered '21; Orchestra; Glee; Olympic Club; Candy Sale.

**HENRY BROWN**

*"How awful goodness it!"*

History Course, Entered '21; Dramatic Club; Science Club; Hi-Y; Candy Sale; Minstrel Show; Senior Play.

**ETHEL DYKEMAN**

*"She is a scholar and a good one."*

Foreign Language Course, Entered '21; Latin Club; Spanish Club; Sobana Club; Chorus; Candy Sale; Hockey; Campfire.

**HOWARD BURCH**

*"There is no wonder in life like yours of energy and activity."*

General Course, Entered '21; Minstrel Show; Candy Sale; Dramatic Club; Science Club; Hi-Y Club.

**FLORENCE BUCK**

*"Silence is sweeter than words."*

Commercial Secretarial Course, Entered '20'2; Chorus; Candy Sale.

**ELIZABETH CAMP**

*"A genial disposition brings its own many friends."*

Scientific Course, Entered '21; French Club; Girls' Athletic Club; Big "E" Winner.



Frances Buckley

**RUTH ANDERSON**

*"I laugh and the world laughs with me."*

General Course, Entered '21; Music Club; Candy Sale; Dramatic Club Play.

**CHARLOTTE BERGSTROM**

*"If you should ask me what I would be if I were not Charlotte, I would answer, 'I would be advanced.'"*

History Course, Entered '21; Glee; Athletic Club; Latin Club; Service League; Honor Roll; Big E Winner; Hockey; Basketball; Baseball; Track; Candy Sale; Blue and Gold Mid-year Program.

**BART FARRELL**

*"In his duty prompt at every call."*

General Course, Entered '23; Track; Candy Sale; Minstrel Show; Olympic Club.

**HELEN AUBERT**

*"At last we have found a woman, who hasn't botched her hair."*

Home Economics Course, Entered '24.

**ELLEN ANDERSON**

*"Her ways are the ways of pleasantness, and all her paths are peace."*

Commercial Bookkeeping Course, Entered '20'2; Commercial Club; Candy Sale; Honor Roll.

**FRED DOPE**

*"A good looking lad Who is not very bad Nor yet very good."*

General Course, Entered '17; Re-entered '24; Candy Sale; Advanced Boys' Glee; Minstrel Show; Football.



**GEORGE FRANCOIS**  
*"It is in laughing moods that many youthful hearts learn to love."*  
 General Course, Entered '21;  
 Candy Sale; Minstrel Show;  
 Dramatic Club; Track; Music  
 Club; Olympic Club; Boys' Glee  
 Club; Opera; Blue and Gold  
 Mid-year Program.

**DORIS FICKEL**  
*"A quiet worker, always on the job."*  
 History Course, Entered '21.  
 Girls' Reserve; Spoken Club;  
 Service League.

**BEN FRANKLIN**  
*"They tell me I'm good looking,  
 but how can I tell?"*  
 Carpentry Course, Entered '22.  
 Boys' Glee Club; Minstrel  
 Show; Olympic Club; Chorus.

**VIRGINIA GARRISON**  
*"Ever charming"*  
 General Course, Entered '21.  
 Dramatic Club; Senior Play;  
 Glee; Chorus.

**PERCY GATES**  
*"Put me among the girls and  
 I am happy."*  
 General Course, Entered '1925.  
 Candy Sale; Travel Club; Boys'  
 Glee; Minstrel Show.

**MARGARET SMITH**  
*"Patience lies at the foot of all  
 pleasures."*  
 Scientific Course, Entered '21.  
 Science Club; Latin Club;  
 Travel Club; Glee Club; Chor-  
 us; Candy Sale.



**ANN DONOVAN**  
*"She's little, but—Oh my!"*  
 Foreign Language Course (Latin  
 Major), Entered '20;  
 Service League; Latin Club;  
 Dramatic Club; Operetta; Dec-  
 laration; Editor of Kodak;  
 '24; Nesika Staff; Candy  
 Sale; Senior Committee; Girls'  
 Glee; Chorus.

**WINSTON BROWN**  
*"He's fast—head and feet both."*  
 Scientific Course, Entered '21.  
 Service League; Honor Roll;  
 Latin Club; Dramatic Club;  
 Operetta; Declamation; Busi-  
 ness Manager of Kodak; Assis-  
 tant Business Manager of Ko-  
 dak; Business Manager of Ne-  
 sika; Candy Sale; Minstrel  
 Show; Boys' Glee; Chorus;  
 Forensic Club.

**LUCILE HOVER**  
*"Cave falls from me like water  
 from a duck's back."*  
 Foreign Language, Entered '21.  
 Masqueraders; French Club;  
 Dramatic Club; Operetta;  
 Candy Sale; Girls' Athletic  
 Club; Girls' Glee; Hockey;  
 Basketball (manager); Tennis;  
 Swimming.

**CHARLES SHEPARD**  
*"A bold, bad man!"*  
 Scientific Course, Entered '23.  
 Senior Play; Dramatic Club;  
 Masqueraders; H. Y.; Drama-  
 tic Club; Manager of Dramatic  
 Club Play; Service League;  
 Honor Roll; Nesika Staff;  
 Candy Sale.

**MARGARET RUCKER**  
*"They will quarrel with a man  
 having no reason, but be-  
 cause they have hazel eyes."*  
 Foreign Language, Entered '21.  
 Service League; Latin Club;  
 French Club; Dramatic Club;  
 Operetta; Assistant Editor of  
 Kodak '23; Art Director of Ne-  
 sika; Honor Roll; Girls' Glee;  
 Chorus; Candy Sale.

**ADRIAN BARTHOLOMEW**  
*"Had I been present at the  
 creation, I would have given  
 some useful hints as to the  
 ordering of the universe."*  
 Scientific Course, Entered '21.  
 Class president, '21; Boys' Glee;  
 Science Club; Olympic Club;  
 Dramatic Club; H. Y. Club;  
 Masqueraders; Candy Sale;  
 Minstrel Show; Property Man-  
 ager of Dramatic Club Play,  
 '23; Stage Manager of Senior  
 Play; Stage Manager of Dra-  
 matic Club Play, '24; Kodak  
 Staff; Nesika Staff; Operetta.

Mrs. W. Weston Brown

Ann Donovan

Virginia Garrison

Mrs. J. B. Armstrong





Mrs. Andrew Mc Guinn

**VERNER SOLEY**  
*"Much can be said on both sides."*  
 Commercial Bookkeeping Course; Entered '21; Advanced Boys' Glee; Olympic Club.

**HELEN ORGAN**  
*"Her tale is the story of all."*  
 Commercial Stenographic Course; Entered '21; Commercial Club; Chorus.

**MAURICE THOMPSON**  
*"Forever loyal to his high school."*  
 Commercial Bookkeeping Course; Entered '21.

**FLORENCE THORNE**  
*"And Oh, how she loved to dance."*  
 Commercial Secretarial Course; Entered '21; Sphinx Club; Latin Club; Sphinx Club.

**HENRY LEEGE**  
*"His fine intellect will find him a high position in the world."*  
 General Course; Entered '21; Radio Club.

**CONCORDIA LUBACH**  
*"What's in a name?"*  
 Commercial Bookkeeping Course; Entered '21; Intermediate Girls' Glee; Music Club; Advanced Girls' Glee.



Margaret Wagner

**THELMA McNIVEN**  
*"The wildest closing of a blue eye's lid; what havoc it will work!"*  
 Commercial Bookkeeping Course; Entered '21; Editor of Kodak; Sphinx Club; Hockey; Neska Staff; Candy Sale.

**AGRILL HOLMAN**  
*"To see things constant never."*  
 General Course; Entered '21; H.Y.

**VERNE SIEVERS**  
*"My studies are interfering with my school work."*  
 General Course; Entered '21; Olympic Club; Spanish Club; Dramatic Club; Sphinx Club; H.Y.; Minnetonka Show; Candy Sale; Blue and Gold Mid-Year Program; Orchestra; Senior Committee; Football; Track.

**FRANCELLA JACKSON**  
*"Mex delight me not (2)."*  
 General Course; Entered '21; Chorus; Intermediate Glee; Music Club; Spanish Club; Girls' Athletic Club; Candy Sale; Hockey; Basketball; Baseball; Big E Winner.

**DULCIE JEFFERSON**  
*"By her people, ye may know her."*  
 Foreign Language Course; Entered '21; Glee Club; Homex Club; Olympic Club.

**VERNA HOLMSTROM**  
*"What is life without a little fun mixed in?"*  
 Commercial Stenographic Course; Entered '21; Commercial Club; Chorus; Advanced Glee Club.

Mrs. Joe Collins



M. L. THOMAS  
*"A quiet lad."*  
 General Course, Entered '24.

MARJORIE REVELL  
*"Knowledge must be acquired  
 by study."*  
 General Course, Entered '25.

MILDRED MCHESNEY  
*"She has a smile for every  
 one."*  
 General Course, Entered '26,  
 General Course.

MABLE SANDERS  
*"A pretty lass, a toby lass,  
 and one you will remember."*  
 General Course, Entered '27.

Mrs. A. B. Baertson

Mrs. Charles Baertson

CLASS FLOWER  
 OPHELIA ROSE

CLASS COLORS  
 ORCHID AND PEACH

MOTTO:  
*He who builds beneath the stars builds too low.*



Bryce Wood      Marion Payzant      Charles Shepard      Edith VanDerwerker  
Commencement Speakers

### COMMENCEMENT PROGRAM

Presiding.....	Principal Leo B. Baisden
Processional.....	Graduates, Girls' and Boys' Glee Clubs and Orchestra
Selections.....	High School Orchestra
Invocation.....	The Reverend Edgar Royce
Commencement Address.....	Judge William Ashkes
Student Speakers—	
"Appreciation of Art".....	Marion Payzant
"Reforestation".....	Charles Shepard
"Opportunities for Girls".....	Edith Van Derwerker
"Purpose in Life".....	Bryce Wood
Piano Solo—	
(a) "Alc. Wien".....	Godover's
(b) "Rigaudon".....	MacDowell
Harp Solo—	
"The Harp of the Winds".....	Horselmann
Vocal Solos—	
(a) "Come Away".....	Moss
(b) "Blackbirds Song".....	Scott
Trio—	
(a) "Londonderry Air".....	Krieger
(b) "Pas. des Amphores".....	Chaminade
May Sievers—violin      June Sievers—cello	
Bernice Metz—piano	
Presentation of Class.....	Superintendent Arthur Wilson
Presentation of Diplomas.....	J. A. Myers



### Will of the Class of '25

We, the class of 1925 of the Everett High School, realizing the utter impossibility of a probable extravasation amid hyerdi-terminant and glasyndinal conditions appropos of our immediate departure, have reached the momentous occasion when all possessions, personal or otherwise, gifts, charms, acquisitions, liberties and idiosyncracies, must be gathered together and disposed of.

Therefore, we now lift a few sheets of Mr. Kempkes' butcher boy foolscap, and write while still in the possession of the majority of our facilities. Wishing to act in perfect accordance with past traditions, we now distribute, bestow, award, and bequeath these various possessions, collectively and individually, as follows:

*First.* Unto Principal Leo B. Baisden, our undying gratitude for his wise and kindly guidance during our sojourn at this institution of learning.

*Second.* To the Juniors, who will take our places, we leave an unexcelled example of a real, honest-to-goodness Senior class, for them to follow.

*Third.* To the Sophomores we will the book "How to Drink Milk from a Half-Pint Bottle."

*Fourth.* To the Freshmen we will a formula guaranteed to remove all stains or bright colors (especially green.)

*Fifth.* Adrian Bartholomew leaves his garters to Rhoman Clem.

*Sixth.* Leslie Baney wills his Glo-Co to the U. S. Mange Cure Society.

*Seventh.* Winston Brown wills his red tie to the rear of Stanley Walsh's Ford.

*Eighth.* Clarence Doela wills his bashfulness to Filmore Calboon.

*Ninth.* Ann Donovan wills to Ruth Carlson her book "How to Eat Peanuts with a Fork."

*Tenth.* Elizabeth Gable leaves her slicker to Everett Fish Market.

*Eleventh.* Everett Gray wills his tin Derby to Durfee Day.

*Twelfth.* Viola Kjelstad leaves "mean eyes" to the Sea Gull in the main hall.

*Thirteenth.* Thelma McNiven leaves her "Smiling Irish Eyes" as an inspiration for future poets and song writers.

*Fourteenth.* Oh, Mounger wills his new Everett Theatre Overcoat to Jimmy Linton for a lounging jacket.

*Fifteenth.* Casper Monson leaves his football plunging to David Ohl-

sen to use in demonstrating Pascal's Law.

*Sixteenth.* Peggy Rucker wills her last five lessons in aesthetic dancing to Marian Schoch.

*Seventeenth.* Wylie Smith wills his knack of capturing the "maidens" to Bernard Geary.

*Eighteenth.* Mary Torrey wills her job as water carrier on the Girls' swimming team to Ruth Walsh.

*Nineteenth.* Bryce Wood wills his hair to the Everett Mattress Factory.

*Twentieth.* Helen Zehle leaves anything else that may be necessary to maintain the high standard of Everett High School.

IN WITNESS WHEREOF, we have hereunto set our hand and seal this twelfth day of June in the year of our Lord one thousand nine

hundred and twenty-five.

THE CLASS OF 1925,  
EVERETT HIGH SCHOOL.



## Class Prophecy

"The night comes on—a blanket of darkness and enshrouding gloom. Silence reigns, deep, mysterious, awful. A mountain, waiting, watching, like a monster, looms in the distance.

At midnight fiery flames issue from the rumbling, belching throat of the mountain. Vapor, ashes, rushing streams of lava! Shrieks are heard from all sides, "Pilehuck has erupted! Pilehuck has erupted!" Cries of human agony, then desolation—death."

"Well, wouldn't that freeze ya? Imagine a man writing that and hot ashes coming on top of him! What's that name scribbled at the bottom of that paper? Brine, no, Bryce Wo-ah Wood. Why old Bryce Wood! I remember him, don't you, Herb?"

This was the conversation between two engineers, John Sievers and Herbert Mansfield, who in 1945 were sent into the wild regions of Everett and vicinity, that were devastated in 1942 by the eruption of Pilehuck, to find any information concerning the catastrophe, and to do some excavating.

"Do I remember him? I should say so. Look there; he wrote that on some kind of letterhead. It's pretty badly burned, but maybe we can make it out. Yes, look; 'Household Hints,' editor Bryce Wood; assistants, Mary Torrey, Marian Shaw, and Roy Schlegel; business manager, Leslie Bitney; assistants, Beryl Wilson, Maurice Thompson, and Albert Zimmerman. Say, Junior, file that away. That's valuable material. Let's look around for some more documents.

"Look here at this piece of tin, here on the other side, 'Saws Sharpened Shoppe,' proprietor Ray Van Patten, esquire. Ha! Ha! I never thought he'd get to that."



"What's that black square over there? By Jove! A purse! 'Sara Stapleton,' it says! Look here on the inside. Must be an insurance card. Yes, it is. See! 'Suretogetcha Insurance Company,' proprietor, Dr. Capsule Berge. Her occupation was that of an actress. That's right! She was in our Dramatic Club Play, wasn't she? Here are some cards in the back of the purse. John Tyler, attorney at law, and Helena Letme Zebble, director of the Physiology of the Worm. This is one I remember, too—Mademoiselle Nightengale Stiger, director and decorator of the Voice; assistants, Thelma Butler, and Myra Teets. Also, Mr. Washington Darling Brown, the director of a hospital for the insane Nesika staffs."

"Let's go farther in, Herb, and see what we can find. Why, here is a newspaper. How funny! It did not burn. It must be printed on that new kind of paper, guaranteed not to burn, rust, or bite, invented by Arthur Putnam. Let's look at it. Gee, what a name for a paper, 'Fulla Thinked Thots.' Headlines, Van Winkle Wins! Good ol' Don; what's he done now? Let's read it and see. Ho, Ho, he won the talking marathon. Well, he always was pretty good at that. The judges were M. L. Thomas, Ellis Murphy, and Edward Craun. Say, this surely is a find; let's sit down and read it."

"All right. You read a page and then I will; get me?"

"Suits me fine. It says here that Henry Brown and Virginia Garrison are making quite a hit in gay Paris with their latest play entitled 'Leapin' Lizards.' Here's something interesting. Charles Shepard and his wife (formerly Lucile Hover) have just embarked on their yacht 'Navy Bean' for a long voyage to Tulalip. Members of the crew for the perilous voyage are Percy Gates, captain; Lester Hoisington, pilot; John Stephens and Bill Tierney, mates; Dorothy Wallmacher and Evelyn Tawls, entertainers; Marvin Sholberg, cook; and Avery Pabst, chaplain. Oh boy! Isn't this rich! Raphael Snyder, Ray Montgomery, and Varnished Sievers are the main features of a traveling circus, which is owned and operated by Farrel, Philipoteaux and Petershagen. The press agents are Ruth Pederson, Edna Noyes, and Homerun Requa. I always expected this one! Margaret Rucker Bartholomew, wife of the famous mountain climber, Jonathan Adriatic Bartholomew, has attracted world wide attention by her marvelous painting of the President of the United States, Aubrey Mounger. The great art critics, Grace Ackerman, Phyllis Esty,



and Mary Walter, have praised it highly. Now it's time for you to read a while; don't you skip any."

"Don't worry, I won't. Here is an add for the Payzant theatre, And just look who's on the bill! Helen Baldwin, Elizabeth Donoho, Francella Jackson and Nancy Hansen, dancers and rivals of Pavlova. Helen Organ travels with the company, and charms large audiences with the sleep-walking scene from 'Macbeth.' Here is an article entitled 'In Everett Literary Circles.' It mentions Mildred Bast, Marie Davies, and Marjorie Revell, short story writers; the novelists Elizabeth Camp, Leonis Enger, and Elizabeth Munger; and the popular poetesses, Edna Reef, Lola Meyer and Ruth Allen.

"Here is another: 'In Congress' is the title of this article. It speaks of the famous speeches delivered by Henry Legee, Russel Taylor and Grace Whitney, concerning the establishment of traffic laws for airplanes. Arlene Spencer, Marguerite Rodgers, and Gladys Sharp are secretaries to Senators Melby, Weiss, and Slingerland, respectively.

"George Nelson is the city manager of Everett. I see that his wife is Viola Kjelstad Nelson. Agrill Holman and Victor Larson are commissioners. Arnell Johnson is chief of police, and James Kaiser is fire chief. Hugh McGuinness is dog catcher. Fred Doph and Robert Lewis are speed cops. I see, too, that Casper Munson and Lloyd Greger have established an electric pin cushion factory. The three Smiths—you remember them, don't you—Wylie, Margaret and Norman—have established a hospital with Edith Van Derwerker as head nurse, and Evaline Thompson as assistant. Up here in the corner it gives the personnel of the staff of this paper 'Fulla Thinked Thots': Thelma McNiven, editor; Elsie Rasmussen, Maxine Morrow, and Hazel Seaman, associate editors; Robert Mony, editor of Children's department; and Thora Newell, Annie Nelson and Ella Goff, reporters. The business staff is headed by Velma Kyes; assistants, Lucille Johnson, Rosalie Hocifler, and Verna Holmstrom. Everett Fells is the printer's devil. Here is something interesting, too; it gives the teaching staff of the Everett High School. The principal is Verner Soley; office boy, Howard Burch; Owen Hazelton, news-writing teacher; Claire Christenson and Elizabeth Davies are English teachers; Jim Rowe is a sociology teacher. Ellen Anderson and Stewart McIntire, science; May Klopfenstein and Emma Kornitzer are commercial teachers; Everett Gray is



head of the Sewing Department, and Clarence Docka is the coach. That's about all of the staff that we know."

"I see that the music loving public was to be entertained. The 'Old Maids' Orchestra' was to appear at the high school auditorium. The orchestra was composed of Elizabeth Gable, harpist; June Sievers, cellist; Bernice Boddy and May Sievers, violinists, and Mary Fogarty and Elizabeth Doph, pianists.

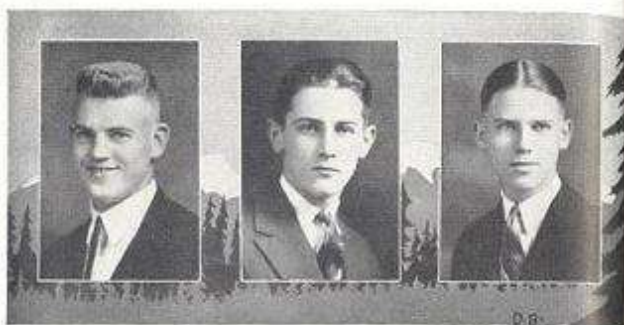
Everett had a Monument avenue, too, I see. Helen Carlson presents the first monument, which was erected at the corner of Hewitt and Colby, in memory of her canary bird, Josephine, which expired last spring. George Francois delivered a touching address at the unveiling. A quartet, composed of Charlotte Bergstrom, Esther Anderson, Helen Aubert and Ethel Burk, sang the sweet song 'All Alone.'

"It seems that Alice Berg, Ethel Dingman, Florence Buck and Hannah Chadwick married English lords. Myrtle Halvorsen, Ben Franklin and Dulcie Jefferson are missionaries to Sedro-Woolley where they are endeavoring to civilize and Americanize the natives.

"Now, Junior, sit up and take notice; we are getting into society. June Carboneau's marriage to the Prince of Wales was solemnized at Canterbury Cathedral. The bridesmaids were Lady Ellen Carlson, Lady Ethel Dykennon, Lady Maxine Ebert, and Lady Lillian Eldridge. Lady Doris Fiekel and Lady Ruby Getchel were the maids of honor. Sir John Klapp was best man. Little Arthur Knapp was ring bearer. Bea Walsh and Aurelia Sossaman were the sweet little flower girls. For the first time in history girls were ushers at a wedding in this cathedral. They were Erma Jenks, Ilene Larson, Clara Lee, Carrie Lilja, Mary McCormick, Concordia Lubach, Mildred McChesney and Dorothy McNeil. Donald McNeely and Victor Larson, noted detectives, guarded the presents."

"But here is the sensation of them all: Mable Sanders, Anne Sorenson, Helen Stubbs, Florence Thorne, and Elsie Wiek, while traveling in France, broke the bank of Monte Carlo."

"Well, we have found out everything of interest, and we must be off."



McNEIL  
President

TWELVES  
Vice-President

BOLTON  
Secretary

### History of the Class of 24½

The class of '24½! There is a world of significance in these few words, for they refer to a live class, a class that has made the name of Everett High School famous.

As Freshmen, we were the brightest of green. This, however, soon wore off, and we began to take a vital part in the activities of the school.

As Sophomores, we were live wires. We were sophisticated as all Sophomores are, and prominent in school affairs.

Our Junior year was the greatest experienced thus far in our high school life. In scholarship we stood high on the list. We boasted, too, of having one of our members on the state debate team.

Our Senior year was our triumph. In dramas we excelled, and we are proud to announce that our honor roll was one of the largest in the history of the school. In all activities pertaining to high school, we were represented. At our graduation, the school lost a great class, but it gained a greater alumni.

RAY BOLTON,

AGNES AGER

"Now, is she not a wise young woman!"

Stenographic Course,  
Entered '20½;  
Commercial Club.

MAY BOLTON

"Boy! Boy! What do you do,  
That makes the girls all fall  
for you?"

History Course, Entered '21;  
Schix Club; Commencement  
Speaker; Honor Roll; Senior  
Class Secretary; Treasurer; Serv-  
ice League; Nesika Staff.

MAY BEAGLE

"Blondes are the best house-  
keepers."

Bookkeeping Course,  
Entered '20½;  
Girl Reserves; Home Club;  
Glee; Chorus; Baseball; Candy  
Sale.

NORVAL BINNAL

"There is always safety in  
valor."

General Course, Entered '20½;  
Baseball; Glee; Music Club;  
Minutrel Show.

ANNA BURKLAND

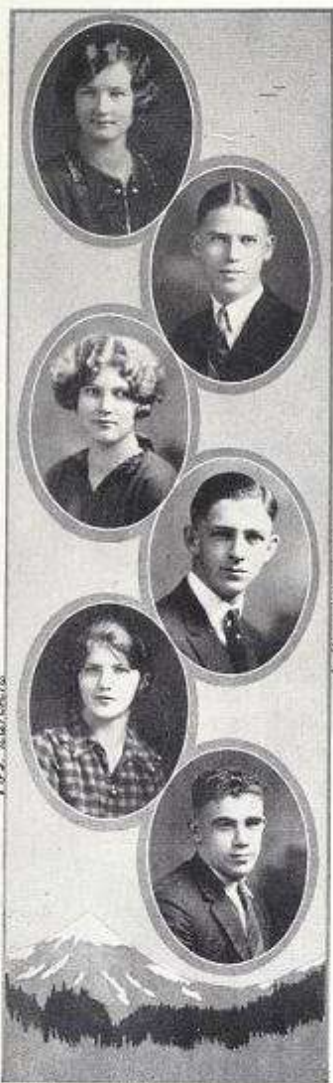
"Silence is golden."

Commercial Secretarial Course,  
Entered '20½;  
Honor Roll; Service League;  
Candy Sale; Spanish Club; Mus-  
ic Club; Commercial Club.

DAVE BRENNER

"With pencil and brush, he  
defies the world."

General Course, Entered '20½;  
Art Club.



Lillian Jorgenson

Mrs. Raichle



ALFRED BELLFUS

*"Go, where thy glory waits thee."*

Foreign Language. Entered '20½.  
Sphinx Club.

MARGARET CROOK

*"A friend is worth all the hands we can run."*

General Course. Entered '20½.  
Latin Club; Spanish Club; Chorus; Glee.

WALTER CHITTY

*"The fairest maid that I can see is little Debbie, come to me."*

General Course. Entered '20½.  
Glee; Football; Track; Candy Sale.

MILDRED CLAY

*"Oh, simplex Algebr."*

Stenographic Course. Entered '20½.  
Candy Sale; Chorus; Glee; Spanish Club; Commercial Club; Girl Reserves.

WILLIAM COMPAU

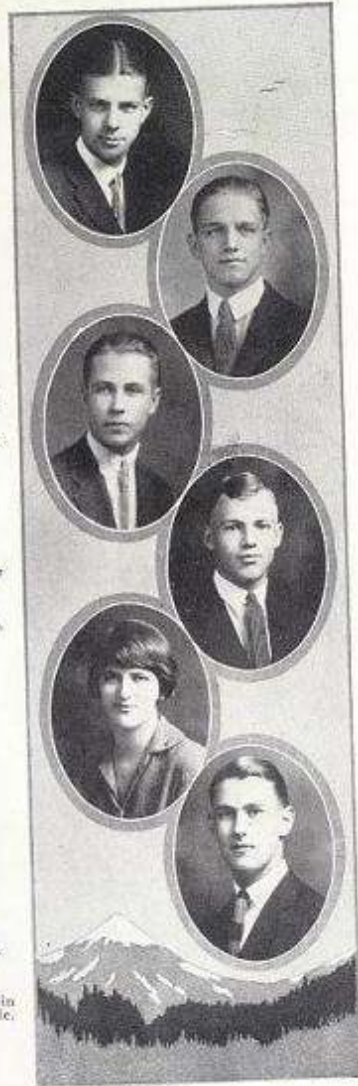
*"The ladies call him sweet—"*

General Course. Entered '20½.  
Olympic Club; Spanish Club (Secretary); Dramatic Club; Nesika Staff; Kodak Staff; Dramatic Club Play Committee; Senior Play Committee.

ADELAIDE DALE

*"Blue eyes, curly hair,  
Many a's—a Service pin to wear."*

Foreign Language. Entered '19½—'20½.  
Olympic Club; Home Rel; Service League; Latin Club; Dramatic Club; Glee.



MORRIS DALE

*"Debating, for me, is fun."*

Scientific Course. Entered '20½.  
Olympic Club; Dramatic Club; State Debate; Inter-class Debate; Latin Club; Chorus.

WILLARD DAVIS

*"A superior lad—'not said."*

General Course. Entered '20½.

WILL DE NEFF

*"I'll let the whole world fall,  
I'll not change my views at all."*

Scientific Course. Entered '20.  
Science Club; Radio Club.

ROY ERICKSON

*"And wisely tell the hour o' days  
The clock don't strike, by Algebra."*

Scientific Course. Entered '20.  
Spanish Club; Science Club.

NELLIE FORTSON

*"A sincere friend."*

Home Economics Course. Entered '20½.

HOWARD FALLER

*"And why may not I love Mildred,  
And why she not love me?  
And why not I love Mildred,  
As well as she loves me?"*

General Course. Entered '21.  
Orchestra; Sphinx Club; Latin Club; Music Club; Candy Sale.



MARGARET GRAHAM

"Don't open the door of your heart to everyone."

Scientific Course. Entered '20½. Service League; Glee Club; Chorus; Hockey; Baseball; Hockey. Fall.

DOROTHY GRUNDY

"Nothing is more rare than true good nature."

General Course. Entered '20½. Candy Sale; Basketball; Hockey; Baseball; Track; Big E. Winner; Athletic Club; Art Club; Girl Reserves.

HAROLD GUTTORMSEN

"I am rarely glad Leap Year is over."

Business Administration Course. Entered '20. Football; Dramatic Club (vice-president); Track; Manager Dramatic Club Play; Hi-Y Club (president); Candy Sale; Minstrel Show.

ELLA HUSTED

"Cheerfulness, sir, is the principal ingredient in the composition of health."

Foreign Language. Entered '20½. Senior Play; Dramatic Club Play; Dramatic Club; Music Club; Sphinx Club; Candy Sale; Declamation; Summer Scholarship.

WASHBURN HALL

"I'll make me glorious by my pen."

History Course. Entered '20½. Minstrel Show; Dramatic Club; Sporting Club; Kodak; Art Club; Chorus.

HAROLD ISAKSEN

"A man's true worth is not good by deeds in the world."

General Course. Entered '20½. Olympic Club.

BERTHA JACKSON

"A merry heart maketh a cheerful countenance."

Commercial Stenographic Course. Entered '20½. Glee Club; Candy Sale; Spanish Club; Dramatic Club; Commercial Club.

ERNEST JOHNSON

"The best athlete we all must own, On which the sun has ever shone."

General Course. Entered '20½. Football; Baseball; Service medal.

KENNETH JUNGE

"Upon the field he is a star—"

Scientific Course. Entered '20½. Track; Football; Science Club.

MARTHA KRISTWICK

"Happy is she, as if every day she had picked up a horse shoe."

Commercial Secretarial Course. Entered '20½. Commercial Club; Service League.

LAWRENCE KILBORN

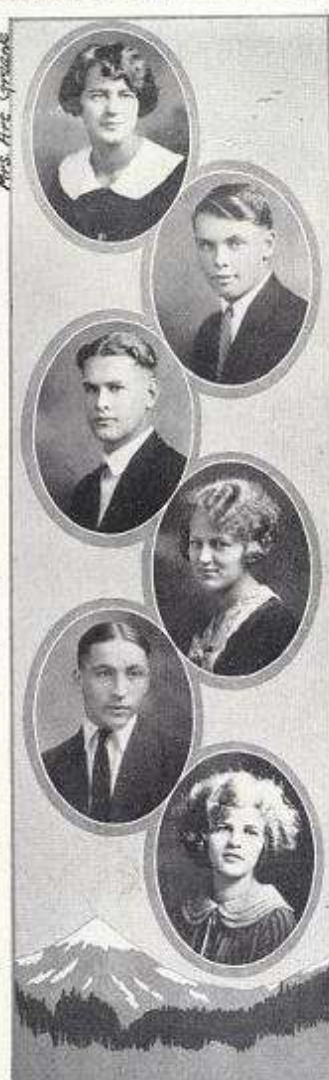
"Our opponents did quake, And their hearts did ache, To see the home run, Our Larry did make."

General Course. Entered '20½. Big E. Club; Baseball; Football; Basketball; Minstrel Show.

CLARIBEL KEEZER

"Full many a flower is born to blush unseen, And waste its sweetness on the desert air."

General Course. Entered '20½. Art Club; Homex Club.



BERTHA JACKSON

"A merry heart maketh a cheerful countenance."

Commercial Stenographic Course. Entered '20½. Glee Club; Candy Sale; Spanish Club; Dramatic Club; Commercial Club.

ERNEST JOHNSON

"The best athlete we all must own, On which the sun has ever shone."

General Course. Entered '20½. Football; Baseball; Service medal.

KENNETH JUNGE

"Upon the field he is a star—"

Scientific Course. Entered '20½. Track; Football; Science Club.

MARTHA KRISTWICK

"Happy is she, as if every day she had picked up a horse shoe."

Commercial Secretarial Course. Entered '20½. Commercial Club; Service League.

LAWRENCE KILBORN

"Our opponents did quake, And their hearts did ache, To see the home run, Our Larry did make."

General Course. Entered '20½. Big E. Club; Baseball; Football; Basketball; Minstrel Show.

CLARIBEL KEEZER

"Full many a flower is born to blush unseen, And waste its sweetness on the desert air."

General Course. Entered '20½. Art Club; Homex Club.



Mrs. Daisy McIntosh  
Mrs. Jack Gorbans



VIVIAN KEENAS

"How envied is the four-year honor student."

Commercial Bookkeeping Course; Entered '20 1/2; Honor Roll.

JOSEPH LEONARD

"Tis his pen that meets my laugh."

General Course. Entered '20 1/2; Radio Club; Science Club; Y Club; Art Club; Candy Sale; Musical Show; Football (sevens).

BEULAH LAUGHTON

"Roses on my shoulders, Slippers on my feet, I am my papa's darling; Don't you think I'm sweet?"

Scientific Course. Entered '20; Candy Sale; Glee Club; Spanish Club; Hustler's Club; Sulfur Club.

HAROLD LENAIGAN

"Haulsome is an handsome dars."

General Course. Entered '20 1/2.

MARIE LEYERS

"Thou' baby blue eyes!"

General Course. Entered '20 1/2; Candy Sale; Science Club; Olympic Club; Glee.

SUE LYKE

"Her heart is of shining gold."

Foreign Language. Entered '20 1/2; Basketball; Baseball.

Deceased



CATHERINE McDONALD

"She has counseled with the wise And now others counsel with her."

General Course. Entered '20 1/2; Honor Roll.

GORDON McNEIL

"Young man, will you buy stock in my hot air plant?"

Scientific Course. Entered '20 1/2; Football; Track; Senior Class President; Senior Play; President of Service League; Sphinx Club; Dramatic Club; Mid-year Program.

MAIDA McLEOD

"She who trifles with one, Is less likely to get caught Than she who trifles with all."

General Course. Entered '20 1/2; Spanish Club (secretary); Science Club; Dramatic Club; Senior Play; Winner of Declamatory Contest.

ROBERT McCHESNEY

"Quiet and Sincere."

General Course. Entered '20 1/2; Football.

AGNES NOYES

"A true girl admired by all."

Home Economics Course. Entered '21; Spanish Club; Glee; Candy Sale; Senior Play Committee.

ELSIE NORRED

"Delicacy in women is strength."

Commercial Stenographic Course. Entered '23; Commercial Club.



Mrs. R. C. Long

Mrs. Foster

**RAPHAEL OCZKEWECZ**

*"I may die to slow music, but I will live to rapture."*

Commercial Secretarial Course.  
Entered '20 1/2.  
Olympic Club; Minstrel Show;  
Yell Leader; Dramatic Club.

**MAY OHLHOFF**

*"Such an expert that is the young woman,  
That her balls find the basket,  
when no one else's can."*

General Course. Entered '20 1/2.  
Science Club; Latin Club; Athletic Club; Girl Reserves; Basketball; Hockey; Baseball.

**HAROLD OLSEN**

*"A nice young man!"*

Commercial Bookkeeping Course.  
Entered '20 1/2.

**ETHEL OAS**

*"As sweet as she is good."*

Commercial Secretarial Course.  
Entered '20 1/2.  
Commercial Club; Glee.

**AMY PAUL**

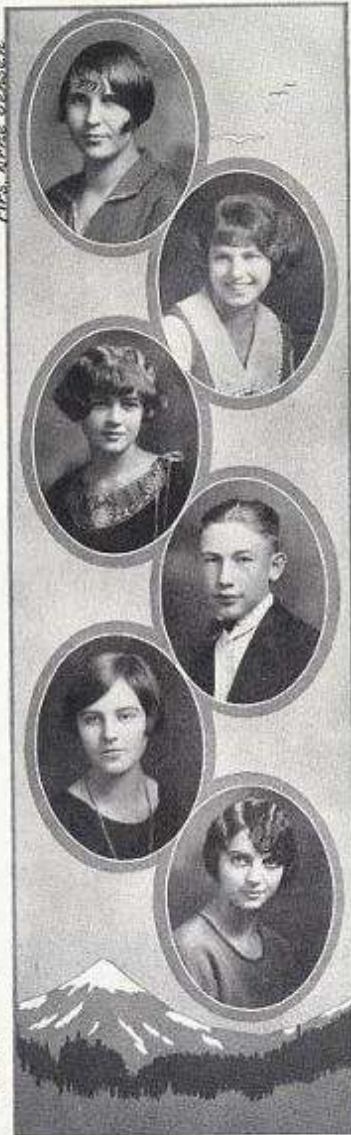
*"Deep lathered in her hair,  
In love and joy for all."*

Commercial Stenographic Course.  
Entered '20 1/2.

**MARIE PECK**

*"She dishes so delightfully!"*

Commercial Stenographic Course.  
Entered '20 1/2.  
Dramatic Club.



Mrs. Anne Jensen

**HELEN PERIN**

*"Life is a comedy for her; she laughs her way through it."*

Home Economics Course.  
Entered '20 1/2.  
Chorus; Glee; Candy Sale; President and Vice-President Honor Club; Junior Farce; Dramatic Club; Girl Reserves.

**ANNA M. PETERSON**

*"She is a maid of artful grace,  
Quiet of voice and sweet of a face."*

Bookkeeping Course. Entered '21.  
Commercial Club; Travel Club.

**VIVIAN POWELL**

*"The hand that hath made you fair,  
Hath made you lovely."*

General Course. Entered '21.  
Commencement Speaker; Honor Roll; Senior Play; Service League; Secretary Dramatic Club; President Glee Club; Chorus; Interclass Debate; Senior Committee.

**THEODORE RENNERT**

*"Speech is great, but silence is greater."*

Commercial Bookkeeping Course.  
Entered '21.  
Candy Sale; Minstrel Show.

**FLORENCE RONKEN**

*"Calm and untroubled as the summer seas."*

General Course. Entered '20 1/2.  
Latin Club.

**NEVA RUPPEL**

*"Her loveliness! So absolute she seems."*

Home Economics Course.  
Entered '20 1/2.  
Junior Farce; Declamatory Contest; Candy Sale; Olympic Club; Dramatic Club; Dramatic Club Play; Senior Play; Glee Club; Service League; Honor Roll; Commencement Speaker.



Katherine Gullberg

**RICHARD W. STONE**

*"Sing, sing a song to me."*

Commercial Bookkeeping Course.  
Entered '20½.  
President Advanced Boys' Glee;  
Senior Play; Candy Sale; Min-  
street Show; Dramatic Club;  
Music Club; Senior Committee;  
Peakody Scholarship.

**IVA STONEHOUSE**

*"Small, but mighty."*

Home Economics Course.  
Entered '20½.  
Olympic Club; Science Club;  
Homex Club; Candy Sale; Cho-  
rus; Glee; Girl Reserves.

**CHESTER SWANSON**

*"A keen mind—he ought to ac-  
complish great things."*

General Course. Entered '20½.

**CHRISTINE SUTHERLAND**

*"One of life's greatest gifts is a  
true friend."*

Commercial Bookkeeping Course.  
Entered '20'22.  
Chorus; Glee; Commercial Club.

**ALTON SVENSON**

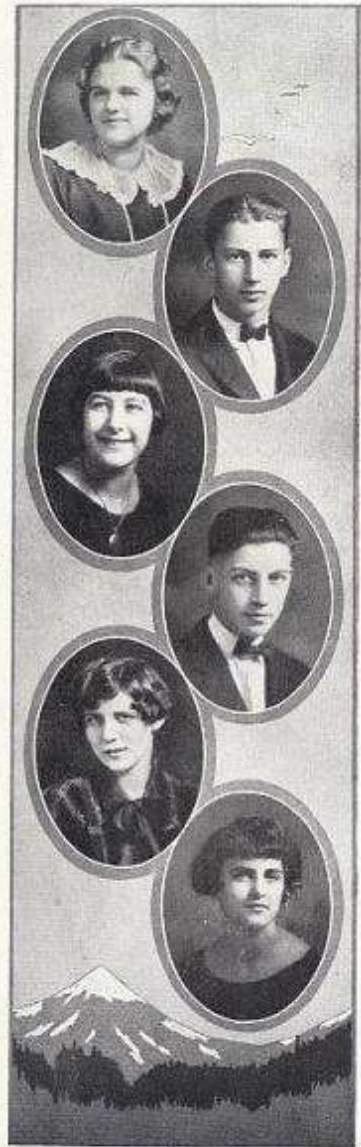
*"Men of few words are best  
men."*

Scientific Course. Entered '20½.  
Science Club.

**GLADYS SVENSON**

*"A little bit of folly,  
A little bit of fun,  
Is Gladie, liked by every one."*

Foreign Language Course.  
Entered '20½.  
Spanish Club; Art Club.



**MILDRED SESSIONS**

*"She keeps a golden mean  
Between saying too much and  
too little."*

Home Economic Course.  
Entered '20½.  
Service League; Olympic Club.  
Homex Club; Candy Sale; Chor-  
us; Senior Committee.

**ALVIN SHOLBERG**

*"I know more than I am able  
to express."*

Electrical Trade. Entered '20½.

**GWENDOLYN SHAKESPEARE**

*"Joyful, laughing, bubbling,  
mirthful."*

Foreign Language Course.  
Entered '20.  
Latin Club; Chorus; Basketball;  
Hockey; Glee; Olympic Club;  
Baseball; Athletic Club; Gira  
Reserve; Big E Winner; Senior  
Committee; Candy Sale.

**HERBERT SMITH**

*"A little flirting, now and then,  
Is relished by the best of men."*

General Course. Entered '20½.  
Olympic Club; Minstrel Show;  
Candy Sale; Boys' Glee; Chorus.

**LYDIA SOLIE**

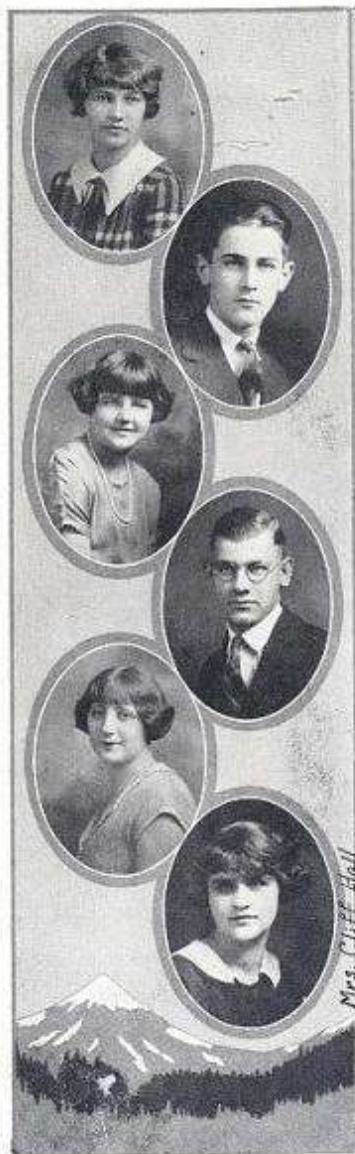
*"A most little maid."*

Commercial Secretarial Course.  
Entered '20½.

**HILDA STORMO**

*"A modest maid, yet self-pos-  
sessed with all."*

Mathematical Major. Entered '22.



VIOLA SOYDE

*"Laughter and tears are meant to turn the rebels of the same sensibility; one to tolerance and the other to intolerance—that is all."*

Foreign Language Course.  
Entered '20 1/2.  
Dramatic Club; French Club;  
Olympic Club; Candy Sale.

CHARLES TWELVES

*"Luck is all right, but hustling beats it."*

Scientific Course. Entered 20 1/2.  
Honor Roll; Commencement  
Speaker; Senior Class Vice-  
President; H.Y. Club; Senior  
Play; Candy Sale; Mistletoe  
Show; Sphinx Club; Business  
Manager of Debate; Orchestra.

IRENE TICHACEK

*"An ounce of worth is worth a  
pound of sorrow."*

History Course. Entered '20 1/2.

BERNARD H. WEBER

*"Friendly and compassionately  
with all."*

Commercial Bookkeeping Course.  
Entered '20 1/2.  
Football.

DORA WEINSTEIN

*"Like a child, her talk flows on  
forever."*

Commercial Secretarial Course.  
Entered '20 1/2.

FLOSSIE WHITNEY

*"A jolly girl without care or  
troubles.  
Whose voice with laughter of  
soaps bubbles."*

Commercial Secretarial Course.  
Entered '20 1/2.  
Commercial Club.

JOHN HOLBERG

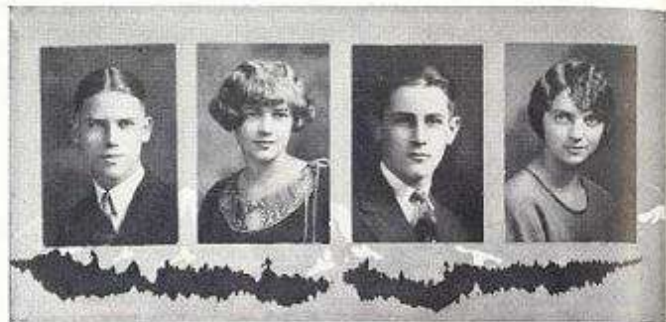
*"He who respects others, is re-  
spected by them."*

Commercial Secretarial Course.  
Entered '20.

CLASS FLOWER  
VIOLET AND ROSEBUD

CLASS COLORS  
ROSE AND GOLD

MOTTO:  
Step by step we rise



Raymond Bolton    Vivian Powell    Charles Twelves    Neva Ruppel  
Commencement Speakers

## Commencement Program

Presiding.....	Principal Leo B. Baisden
Processional—"Tis Our Graduation".....	Cowen Seniors, Girls' and Boys' Glee Clubs and Orchestra
Selection from Carmen.....	Bizet, arranged by Sorely High School Orchestra
Invocation.....	The Rev. Carl Heinwiler
"The Old Road".....	John Prindle Scott
"At Twilight".....	Franc Advanced Girls' Glee Club
Address, "The Advantages of the Present Generation".....	Vivian Powell
Address, "Japanese-American Relation".....	Raymond Bolton
Violin Solos.....	Eilef Anderson
Address, "The Child Labor Amendment".....	Neva Ruppel
"The Fairest Flower".....	Adams
"Yachting Glee".....	Cuthbertson Boys' Glee
"Corner Stones of Character".....	Norman Peart
Presentation of Diplomas.....	Mr. Myers
Benediction.....	The Rev. W. H. L. Marshall



## Class Prophecy

PLACE—Heaven.

TIME—Eternity.

CHARACTERS: St. Peter and his assistant, Dick Stone.

### SCENE I.

A knock is heard at the door.

*Assistant:* Quick, some one wants in!

*St. Peter:* Where's the questionnaire? Since Bill Compau has become our office boy, I can't find a thing. Who's there?

*Voice:* Your humble servant from the earth—Joe Leonard, the sport writer.

*Assistant:* Ah! That name sounds familiar.

*St. Peter:* Qualifications, please?

*Joe:* A graduate from the Everett High, '24½.

*St. Peter:* Done anything bad?

*Joe:* N-o-o!

*St. Peter:* Nuff sed—come on. Get your crown as you enter the door. That is about fifteen of that class that we have had this week. Whom did you let in while I was out dining with Abraham?

*Assistant:* Well let's see. Larry Kilbourn, that Notre Dame coach, you know was here. I let him in, because we haven't many illustrious men here. Gordon McNeil, the famous dancer, too. I sorta felt sorry for him, so I let him in.

*St. Peter:* I thought we let him in last week!

*Assistant:* No that was his wife, Margaret Graham McNeil; she came in at the same time those famous authors, D. Washburn Hall, and Harold Guttormsen did.

*St. Peter:* What did they ever write, that we should let them in here?

*Assistant:* Don't show your ignorance like that. Harold wrote that great book "Hot Stuff," and Washburn, "The Migration of the Oysters."

*St. Peter:* That oil king, Arthur Plaxton is here too, isn't he? I just met him as I was coming back.

*Assistant:* Yes, and his wife, Marie Peck. We have two well known lecturers, too, Vivian Powell, and Neva Ruppel.

*St. Peter:* My wife hired two new maids this morning, Mildred Sessions and Gwendolyn Shakespeare. They were running a cross-word puzzle factory and their strenuous work killed them.

(A very timid knock was heard at the door.)



## NESIKA

*Assistant:* Who's there?

*Voice:* Viola Sovde, if you please.

*Assistant:* What's your business?

*Viola:* Zeigfield's Follies Girl.

*St. Peter:* Let'er in; beauties are a minus quantity up here.

*Assistant:* All right, come in. Here is your harp; take the stairs to the left.

*St. Peter:* I hope this place livens up a bit; I'm bored to tears.

In breezes a young (?) lady, without knocking, singing, "Oh, Peter, you're so nice. Say, is this Paradise?"

*Assistant:* Say! Who do you think you are?

*Young Lady:* Don't talk to me that way, brother. But since you ask me, I am Maida McLeod.

*Assistant:* What's your business?

*Maida:* Of all the insults! Never heard of me? Why, I am the great actress. The rest of my troupe are coming up later. Our ship was sunk, as we were going to Mukilteo to put on our act.

*St. Peter:* Who are in the crowd?

*Maida:* In my company there were—let's see—Ernest Johnson, my leading man, Bertha Jackson, the vamp, and Chester Swanson, the villain. Catherine McDonald is our press agent, and Claribel Keezer, the designer of our costumes. Alton Svensson is the manager of the troupe.

*St. Peter:* Oh, I guess we'll let them pass; we need some new stars up here, anyhow. Give her a Uke and let her go before she talks me to death.

*Assistant:* Those inventors we were watching, came up while you were at lunch.

*St. Peter:* Which ones?

*Assistant:* Harold Isakson and Kenneth Junge; they were working on that wireless fly-swatter.

*St. Peter:* Oh yes. Say, who are these old maids here, that are making such a fuss over suffrage? I don't remember of letting them in here.

*Assistant:* Just a second, till I look them up in my books. Here they are: Marie Leever, Dorothy Grindy and Beulah Laughton. They came in at the same time those three Senators from Arkansas, Alvin Sholberg, Bernard Webber and Harold Olson came in.

*St. Peter:* Oh, that is the crowd of old girls that hit me with the umbrella and I didn't have sense enough left to send them below.

*Assistant:* Yes, that's the ones.



## NESIKA

(A few little pecks are heard at the door.)

*St. Peter:* Who's there?

*Voice:* Walter Chitty.

*St. Peter:* Qualifications?

*Walt:* Married Dickie Shaw.

*St. Peter:* Wise man, step in; give him his crown.

*Walt:* Can my friends come in too? They are out here.

*St. Peter:* Who are they?

*Walt:* Ella Husted's husband, Dave Brenner, Alfred Beilfus, and John Holberg, the explorers who started to Mars.

*St. Peter:* Oh, I guess so—always room for a few more.

*Assistant:* These movie stars you let in last week are making quite a rumpus.

*St. Peter:* How come?

*Assistant:* Oh, Sue Lyke and Norval Binnal tried to film a picture over in Moses' lot and they had such a mob around that they couldn't do a thing.

*St. Peter:* Where were the cops?

*Assistant:* We have three; those oil kings, Theodore Renkert, Willard Davis and Harold Lenahan, and they were busy chasing Will Neff and Herb Smith who were digging up the gold on Main Street.

*St. Peter:* Get that governor of Washington that's up here busy, straightening out things.

*Assistant:* Oh, Morris Dale?

*St. Peter:* Yes. Men are so scarce, we will have to use some of our husky ladies.

*Assistant:* Well, Mildred Clay, Ruth Egbert and May Beagle, who made a name for themselves as athletes, would be good for that job, and May Ohlhoff would make a fine chief of police.

*St. Peter:* Suits me. I'm tired, so I am going to sleep for a while; tend to things till I get back.

*Assistant:* All right.

(Assistant goes to the door and calls the office boy, Bill Compu.)

*Assistant:* Where did we leave off the other day when we were talking about the graduates of '24½? I remember, with Adelaide Dale, Agnes Ager and Anna Burklund, who are all school teachers in E. H. S. And what ever became of Howard Faller?

*Bill:* Oh, he married Mildred Reid, of course. Iva Stonehouse and Ethel Oas are maintaining a home for aged alligators.



*Assistant:* I heard that Florence Ronken and Anna Peterson are running a matrimonial bureau.

*Bill:* Yes, but the worst of all was Roy Erickson; he married Nellie Fortson, the society queen, and he has taken her to live on his berry farm in Iceland.

*Assistant:* Lydia Solie, Amy Paul and Esther Hegberg; are they still doing interior decorating for that asylum for the blind, run by Elsie Norred and Agnes Noyes?

*Bill:* Yes, the latest I heard they were. Gladys Svensson is running for president and Irene Tichaceh, for vice-president on the "Women First" ticket.

*Assistant:* Flossie Whitney and Doris Weinstein came up about a year ago, before you came. They were designing hose for Margaret Crook, the proprietor of the "Crooked Hardware Shoppe."

*Bill:* Martha Kristwick became the typing artist of the world making  $5\frac{3}{4}$  words a minute. Vivienne Keenan is editor of the "Twinkling Star."

*Assistant:* Our class boasts of three toe-dancers of fame, too, Helen Perin, Hilda Stormo, and Christine Sutherland.

(A knock is heard at the door.)

*Assistant:* Go and wake St. Peter; some one wants in.

*St. Peter:* No rest with this job. Who's there?

*Voice:* Ray Oczkewecz, Charles Twelves and Ray Bolton.

*St. Peter:* Holy Smoke! Have they the nerve to show up here?

(They string in looking sheepish.)

*St. Peter:* (addressing the elevator boy, Robert McChesney.) Show the gentlemen out please.

(They all get into the elevator.)

*Robert:* Going down.

*St. Peter:* Have the stars hung out and blow out the sun; I am going to stop for the day.



## History of the Class of 25½

When you think of the peppiest, cleverest, and most loyal class in the E. H. S., think of the class of '25½, for we are what is known as "live wires."

As Freshmen we displayed keen interest in all school activities, and none ever dared to tease us, because of our dignity, superior intellect and self-control.

When we were Sophomores, we knew even more than most Sophomores do, and the owl-like look of thoughtfulness and meditation which adorned our studious visages was at once our teachers' "Pride and Joy."

In our Junior year, we basked in the light of our popularity, and lived in all the faculties of the soul.

Now as Seniors, we are trying to live up to our established reputation, and have thus far succeeded.

In short, we are satisfied with our record, and are convinced that our future achievements will be as great as those of the past and present.



SENIOR B.



# JUNIOR







GEARY  
*President*

CALHOUN  
*Vice-President*

DAILEY  
*Secretary*

### *History of the Class of '26*

Three short, glorious, successful years ago, as Freshmen, we began our ascent of the steep mountain of learning, called Everett High. In our headlong rush up the grade, we made for ourselves a name of which any beginning class could be justly proud.

Pausing midway on our climb, we looked back over our Sophomore year and found that we had overcome such obstacles as Basketball, Football, Baseball, Debate, and Books.

Now as Juniors we again glance back, before making the final dash for the summit. We are very elated with our success in the All-School Program, in sports, and in scholarship. In fact in every branch of school activity we have been represented.

We believe we have made a record in attaining the three-mile mark on this mountain of learning. We have blazed the trail in our ascent, so that other classes in the future may see the steps taken by the successful class of '26.

CLARENCE DAILEY.



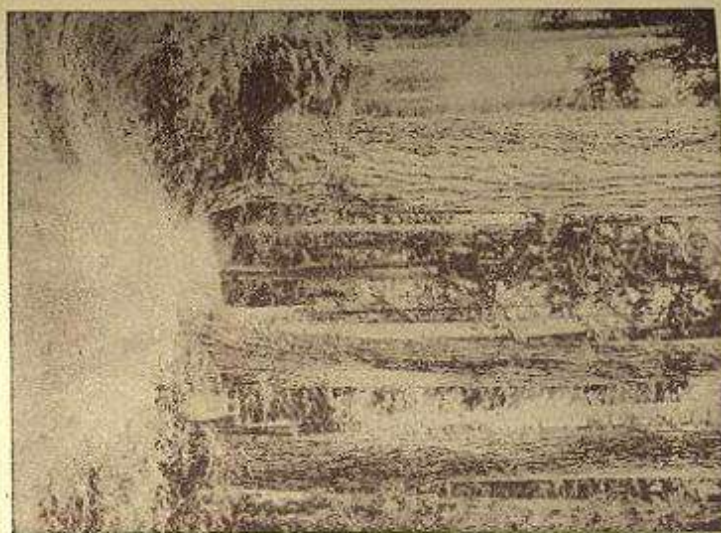
JUNIOR A.



JUNIOR B.



# SOPHOMORE





FISCHER  
*President*

WHITE  
*Vice-President*

CRAW  
*Secretary*

### *History of the Class of '27*

As we, the class of '27, review our Sophomore year, we are justly elated by our accomplishments. We have exceeded the good reputation earned while in that stage of rapid development called the "Frosh Era."

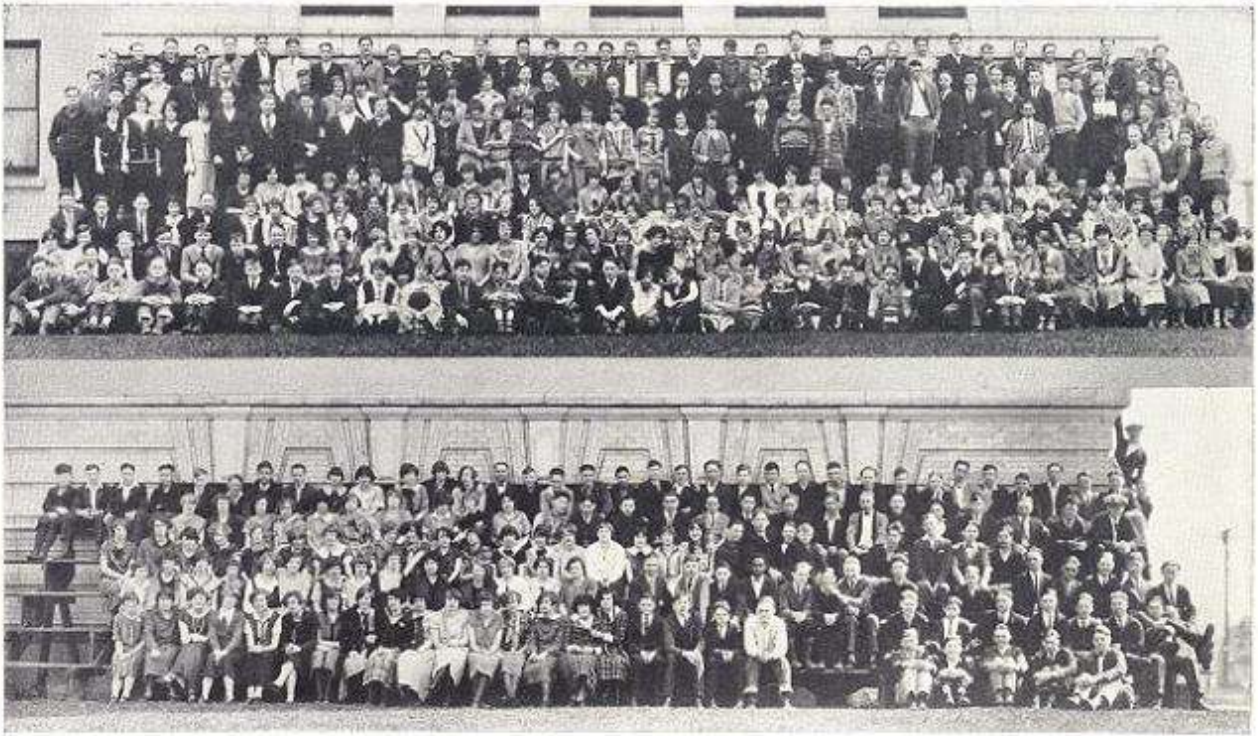
In athletics, our girls won the interclass championship in basketball and hockey. Several of our girls were Big E. winners, and one of us led the Girls' Athletic Club through a successful year. Two of our boys were football letter men; also more than a few from our ranks were claimed by basketball and baseball.

We have not centered our talents in athletics alone. One of our members was a winner in the Gold Medal Declamation Contest, and one of the features of the All-School Midyear program was the Sophomore "Jazz Quartet." In scholarship, too, we have ranked high. Many of our names are to be found on the Honor Roll.

Our class this year has been under the competent guidance of Mr. McGinnis and Mrs. Mudgett.

However successful our past, we are looking to the future, and are sincere in our desire to serve our school.

EVELYN CRAW.



SOPHOMORE A.

SOPHOMORE B.



# FRESHMAN





LLOYD  
*President*

WALTON  
*Vice-President*

LAKE  
*Secretary*

### *History of the Class of '28*

Get set! We, the exceptionally bright class of '28, have been the liveliest contestants in the race for school honors.

One! Our first enterprise was a farce, entitled "The Alphabet Tragedy," which won high approval from everyone, especially the upperclassmen who saw the Blue and Gold All-School Program.

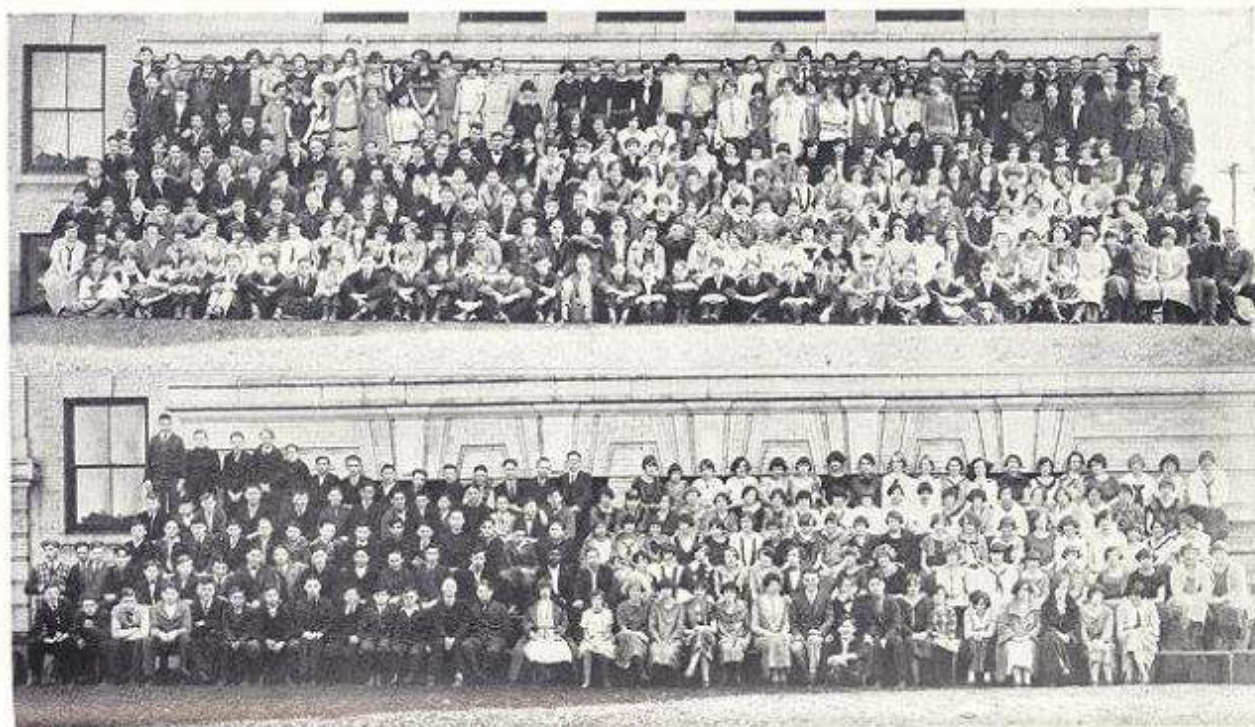
Two! Our exceedingly great talents in debating made a good showing in the interclass contests. Honor Roll students proved to be our specialty.

Three! Our girls showed their interest in athletics when over seventy-five turned out for interclass basketball and hockey.

Go! Allison Lloyd, president; Laurence Walton, vice-president, and Fletcher Lake, secretary-treasurer, showed their loyalty as officers by taking part in the Freshman play, supervised by Miss Pheny, Miss Darrough and Miss Scroggs.

We're off! We are steadily progressing and are bound to break the tape, and win the day with flying colors.

FLETCHER LAKE,



FRESHMAN A.

FRESHMAN B.



# FACULTY





## Faculty Roster

- DOROTHY C. ARISS, *Clothing and Foods*—Oregon Agricultural College. Post-graduate work—University of California. Second year.
- LEO B. BAISDEN, *Principal*—Graduate of University of Washington. Third year.
- PAUL E. BILLETTER, *Commercial work*—Oregon Agricultural College. B.S. Attended University of Washington. Second year.
- EDNA E. BOWMAN, *English*—Graduate of Northwestern University, School of Oratory. Attended Universities of Michigan and Chicago. University of Washington, B.A. Twelfth year.
- JEANNE FALCONER CAITHNESS, *Spanish*—University of Washington. A.B. Attended Chicago Musical College and University of California. Thirteenth year.
- C. E. CALHOUN, *Commercial Work*—Attended University of Washington. Second year.
- ISABELLE CARLISLE, *Head of the Department of History*—Winona State Normal School, Minnesota; University of Washington, A.B. Eleventh year.
- GLADYS CHAPPELLE, *French*—University of Michigan, A.B. Degree in Music. Seventh year.
- OPAL COLLINS, *American History*—University of Washington, A.B., M.A. Fifth year.
- G. C. COUNTRYMAN, *Dramatic English*—Graduate of Marion College and Western Union College. Post-graduate work at University of Iowa. Seventh year.
- CATHERINE CRAYTON, *English and News-writing*—University of Chicago, Ph.B. Tenth year.
- WILLIAM H. DORGAN, *Public Speaking*—Michigan State Normal School and University of Michigan, LL.B. Attended University of Washington. Practiced law successfully ten years at Allegan, Michigan. Ninth year.
- HELEN DARROUGH, *English*—Oklahoma University. Post-graduate work at Chicago University and Columbia University. First year.
- FLORA M. EDWARDS, *English*—Beloit College, Wisconsin, A.B. University of Chicago, Ph.M. Graduate of Emerson College of Oratory. Travel abroad. Thirteenth year.
- CLARA M. EVERTON, *English*—University of Washington, B.A. Post-graduate work at University of Washington in Dramatic Art and English. Fourth year.
- E. P. FAIT, *Director of Vocational School*—Normal Industrial School, North Dakota. Chicago Technical College. University of Washington. Washington State College. Fifth year.
- PANSY E. HUTCHINSON, *Spanish and Sewing*—University of Washington, A.B. Second year.
- L. A. JACOBSON, *Carpentry and Manual Training*—Attended University of Washington. Seventh year.



## Faculty Roster

- ROSCOE C. JENKINS, *Physics*—University of Nebraska, B.S. Attended Nebraska Normal School and Grand Island Business College. Seventh year.
- MRS. HUNTER, *Sewing*—Graduate of Washington State College. First year.
- FANNIE JOHNSON, *English*—Great Falls High School, Bellingham Normal School, University of Washington. Fifth year.
- M. I. GNAGY, *Science*—Graduate of Washington State College, B.S. First year.
- H. B. JORY, *Chemistry, Physiology and Botany*—Willamette University, Salem, Oregon, B.A. Attended University of Washington. Second year.
- HANNAH JONES, *Supervisor of Art Department*—Graduate of St. Cloud Normal, Minnesota. State Teachers' College, Valley City, North Dakota. Special Art Work, St. Agatha Conservatory, St. Paul, Minn. National Summer School, Chicago, Ill. Attended University of Washington. First year.
- NELL KANTNER, *Head of Home Economics Department*—Everett High School, Bellingham Normal, University of Washington. Degree in Science and Home Economics. Fourth year.
- JAY KEMPKES, *Botany and Zoology*—Central College, Iowa, B.S. University of Iowa. University of Washington. Fifth year.
- MARGARET MASON, *Sewing*—University of Idaho, Lewiston Normal. Third year.
- J. C. McCLANAHAN, *Commercial Work*—Attended Union College, Tennessee, Bowling Green Business University, Kentucky, M. Acris Zanerian Art College, Ohio, Gregg School, Chicago. Seventh year.
- MARGARET McCOWAN, *Head of the Department of Foreign Languages*—Grinnell College, A.B. University of California, A.B. European travel. Seventeenth year.
- FRED McGINNIS, *Auto Mechanics*—State College, Kansas, B.S. Seattle Engineering School. Seventh year.
- GOLD E. MUDGETT, *History*—University of Washington, A.B. Sixth year.
- J. H. MORGAN, *Public Speaking and English*—Drake University, University of California. Fourth year.
- GRACE POLLY NEWTON, *History*—Carlton College, Minnesota, A.B. Attended Universities of Michigan and California. Fifth year.
- DAVID OHLSON, *Head of the Department of Science and Teacher of Physics*—University of Washington, A.B., M.S. Ninth year.
- FRANK OVERFIELD, *Algebra and Geometry*—Pennsylvania State College, A.B. Attended Cornell University, Ithaca, N. Y., and University of California. Sixth year.
- FLORA PARSONS, *English*—Grinnell College, Iowa, Ph.B. Attended University of California. Traveled abroad. Twelfth year.



## Faculty Roster

- MRS. IDA PAYZANT, *Shorthand*—Normal Training School, Ontario, Sullivan Business College, Manitoba. Eighth year.
- IRMA M. PELZ, *Physical Training*—University of Washington. Third year.
- AGNES PHENEY, *English*—University of Iowa, A.B. Attended University of Washington. Ninth year.
- IMOGENE B. PLATT, *Auditorium*—University of Washington, A.B. Sixth year.
- J. M. ROBB, *Head of the Department of Mathematics*—Greenville College, A.B. University of Michigan, A.M. Attended the University of Chicago and University of Washington. Nineteenth year.
- G. S. ROSE, *Machine Shop and Mechanical Drawing*—Attended University of Washington. Seventh year.
- ESTHER SATHER, *Head of Department of Music*—Graduate of Thomas School of Music, Detroit, Michigan, Attended Northwestern University and University of California. Sixth year.
- HARRIETT SCROGGS, *English*—Graduate of University of Iowa. First year.
- ETHEL SHAVE, *Spanish and Latin*—Moorhead State Normal School, Minnesota, University of California. Seventh year.
- CLIFFORD SHELDON, *Gymnasium and Playground Work*—Fifteenth year.
- C. D. STEWART, *History and English*—Graduate of University of Washington, A.B. First year.
- L. STENSHOEL, *Electrical Trade*—Graduate of University of North Dakota. First year.
- ANNA E. STURGEON, *Commercial Work*—Graduate of Portland Business College and of Heald College, San Francisco. Eleventh year.
- JANE E. TAYLOR, *Chemistry and General Science*—Lawrence College, Wisconsin, A.B. Eighth year.
- DONALD H. THOMPSON, *History*—Whitman College, A.B. First year.
- BERT VANDERWILT, *Geometry and Algebra*—Penn College, Oskaloosa, Iowa, B.A. University of Washington. Third year.
- N. S. WALTHER, *Mathematics*—University of Missouri, University of Washington. First year.
- R. P. WOOD, *Bookkeeping and Penmanship*—Graduate of Ulster Provincial School, Ireland. Ninth year.
- MABLE A. ZIMMERMAN, *Algebra*—Fort Plain, New York, High School, Brackfort State Normal School, New York, New York State Teachers' Training School. Eleventh year.



NESIKA



April Showers  
1st PRIZE



Archie, the Bold  
2nd PRIZE



Asleep at the Switch  
3rd PRIZE



Page Mr. Challacombe  
HONORABLE MENTION



PUBLICATIONS



## KODAK

This year a marked stride has been made toward the goal, "A bigger and better Kodak."

The Kodak for '24 $\frac{1}{2}$ -25 has had a most profitable year, due to the editorial and business staffs, and to Miss Catherine Crayton and Mr. Roscoe Jenkins, the faculty advisers. The editorial staff of the first semester's Kodak consisted of Ann Donovan, editor-in-chief; Kathryn Ragsdale, assistant, and John Ramstad, sport editor. Winston Brown resumed his position as business manager and Leslie Bitney and Durfee Day were assistants. Toward the last of the semester, Durfee Day went East. He was succeeded by Bryce Wood.

The fall circulation was launched at an assembly. Immediately following short talks by the editor and business manager, and the presentation of both staffs, a telegram was sent to the pilot of the aeroplane, Kodak, who was to make the cross-country flight from New York to Seattle; the destination was set at one thousand subscriptions. At the end of the campaign, there were about one thousand and fifty.

For the second semester Thelma McNiven took over the editorship and her assistants were Margaret Rucker and Cornelia Thayer. Leslie Bitney, former assistant, was made business manager, and Beryl Wilson and Fritz Knaak were his assistants.

The campaign of the second semester also was launched at an assembly. It ended with an exceedingly large number of subscriptions.

With this, another successful year added to its history, the Kodak bids fair to be the best publication of its kind in the state.

### Kodak Staff

Ann Donovan	Editor-in-Chief '24
Winston Brown	Business Manager '24
Leslie Bitney	Business Manager '25
Thelma McNiven	Editor-in-Chief '25
John Ramstad	Assistant Editor '24
Margaret Rucker	Assistant Editor '25
Durfee Day	Assistant Business Manager '24
Fritz Knaak	Assistant Business Manager '25
Cornelia Thayer	Assistant Editor '25
Kathryn Ragsdale	Assistant Editor '24
Beryl Wilson	Assistant Business Manager '25



## *Nesika Staff*

*Editor-in-Chief*  
KATHRYN RAGSDALE

*Business Manager*  
WINSTON BROWN

*Assistant Editors*  
CHARLOTTE BERGSTROM  
MARION PAYZANT

*Advertising Manager*  
BRYCE WOOD

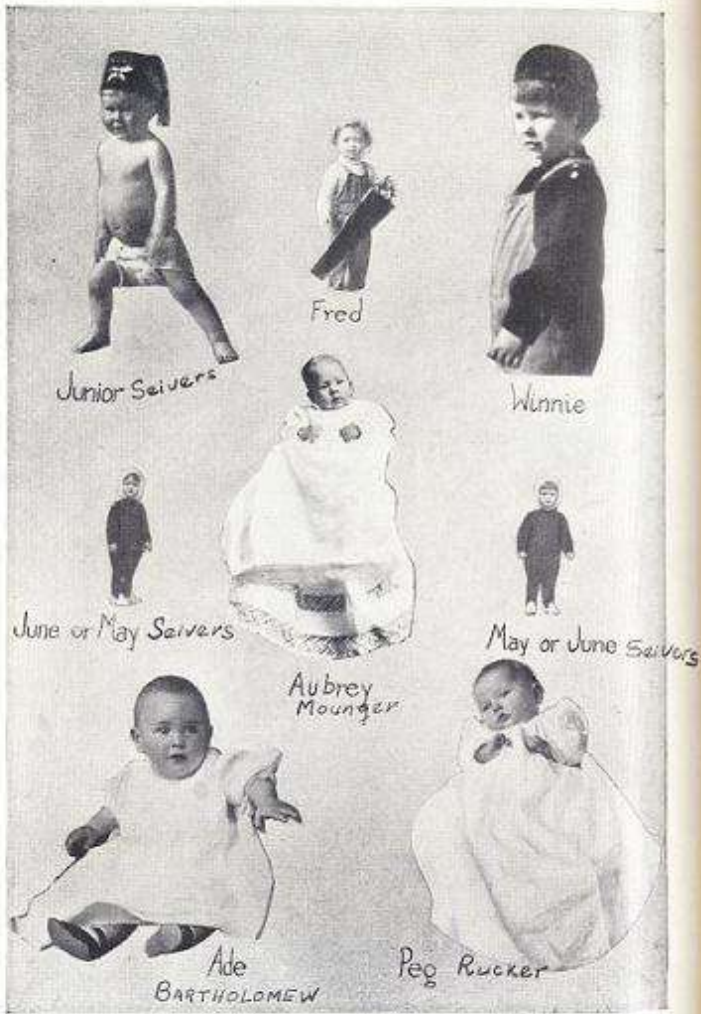
*Circulation Manager*  
ADRIAN BARTHOLOMEW



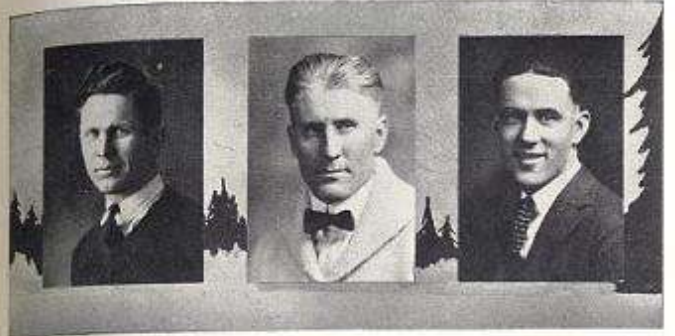
## Nesika Staff

Ann Donovan	Kodak
Durfee Day	Junior Advertising Manager
Beatrice Walsh	Organization
Beryl Wilson	Class History
Margaret Rucker	Art Director
Roy Schlegel	Jokes and Snapshots
Vesta Larson	Girls' Athletics
Bernard Geary	Boys' Athletics
Charles Shepard	Assistant Circulation Manager
Marian Shaw	Entertainments and Faculty
Donald Van Winkle	Debate
Edith Van Derwerker	Class Prophecy
Elizabeth Gable	Music
Clarence Docka	Assistant Circulation Manager
Thelma McNiven	Declamation
Hugh McGuinness	Class Will
June Sievers	Quotations
Ray Bolton	Class of '24½
Anne Sorenson	Dramatics
Robert Mony	Assistant Circulation Manager





# ATHLETICS



VANDERWILT  
*Assistant Coach*

KEMPKES  
*Coach*

GEARY  
*Manager*

## *Football Review*

No football team in the history of the Everett High School deserves more credit and applause than the one of 1924.

Although we have heard much of the famous football men of former years, who brought glory and fame to the old E.H.S., we think that they deserve no more praise than our own splendid players this year.

For the team of 1924 had everything to lose, and no exalted past reputation to rest upon. It was a new team, with a new coach, from which every High School in the United States wanted to wrest the championship.

When Coach Kempkes called the first turnout in September, about sixty-five candidates answered his call, and only three letter men were among them. Although there were many promising fellows among those turning out, they were all green in the art of football.

However, Kempkes soon had them divided into squads in an effort to build a championship team.

The wonderful success he made, despite the handicap of the first game, is revealed in the following account of the season's victories:

### EVERETT 12—ARLINGTON 15

Before a crowd of 4000, Everett lost a tough battle to the heavy and experienced Arlington aggregation by a drop kick in the last minute of play. But despite this defeat Everett showed that it had the makings of a wonderful football team. It was this costly error and a number of penalties that lost the game for Everett. The Arlington team represented a squad that has played together for three years, while Everett was a team learning the art of football.

# NESIKA



WENATCHEE VS. EVERETT

## EVERETT 27—SEDRO-WOOLLEY 0

Everett, after the Arlington game, spent a week in resting and acquiring more knowledge of the fundamentals of football. October 18 the team met and gained a decisive victory over the Sedro-Woolley squad. It was in this game that Everett began to show the marks of a first class football team. Although the score was large Sedro-Woolley fought hard and gave the fans an interesting game.

## EVERETT 7—PUYALLUP 0

Following the victory over the Sedro-Woolley squad, Everett journeyed to Puyallup to meet the strong Puyallup aggregation. To Everett's surprise the Berry-Pickers held the Seagulls to a lone touchdown. Captain Mounger's and Berge's work on the defence was the feature of the game. Owing to the fact that the field was very slippery, very few forward passes were attempted.

## EVERETT 20—WHATCOM (Bellingham) 7

The best football displayed by the Everett High School eleven was displayed November 7, when the Blue and Gold squad beat their greatest rival. It was in this game that the fans saw the real brand of football, the kind that brought the national championship to Everett in 1920. Bellingham's only touchdown came in the last quarter of the game when they fell on a blocked punt behind the goal line.

## EVERETT 12—ABERDEEN 6

Showing great power in both offensive and defensive the Seagulls defeated Aberdeen High at Aberdeen. Despite the fact that the field had a covering of about four or five inches of mud few fumbles occurred. Berge playing his first game in the back-field was a thorn in the side of Aberdeen. The game was hard played throughout.

## EVERETT 31—WENATCHEE 0

On Saturday, November 22, the Blue and Gold defeated Wenatchee to the tune of 31-0. The Apple-Knockers were outplayed in every part of the game. In this game Everett showed more art in passing, and in the use of trick plays excelled. Wenatchee was unable to solve the Everett attack, and only once threatened Everett's goal.



MOUNGER  
Captain

# NESIKA



ABERDEEN VS. EVERETT

## EVERETT 12—LEWIS AND CLARK (Spokane) 6

On a field covered with a coating of mud, Everett High eleven triumphed over the Lewis and Clark High School of Spokane by a score of 12-6 in its Thanksgiving classic. The large crowd that witnessed the spectacle pronounced it a great game. Despite the condition of the field Everett made her first touchdown on a long forward pass. Nothing can be said of individual stars as every man played his part and every play showed teamwork of a well coached team.

### SUMMARY OF SCORES

Everett	Opponents	Everett	Opponents
18	Ahsumi 14	20	Whatcom 7
12	Arlington 15	12	Aberdeen 6
27	Sedro-Woolley 0	31	Wenatchee 0
7	Puyallup 0	12	Spokane 6

## Football Summary

Everett spirit can't be beaten! The football teams have proven this true in every year of their history.

This year, although the Seagull did not inspire our boys to bring home the state championship, they did not sink into abject despair, but even now are looking forward toward next year's season with high hopes, and a resolve to "bring home the bacon."

In every hard-fought game they displayed the fine sportsmanship, indomitable courage, and skillful playing that did credit to Coach Kempkes' training, and made their fellow-schoolmates proud.

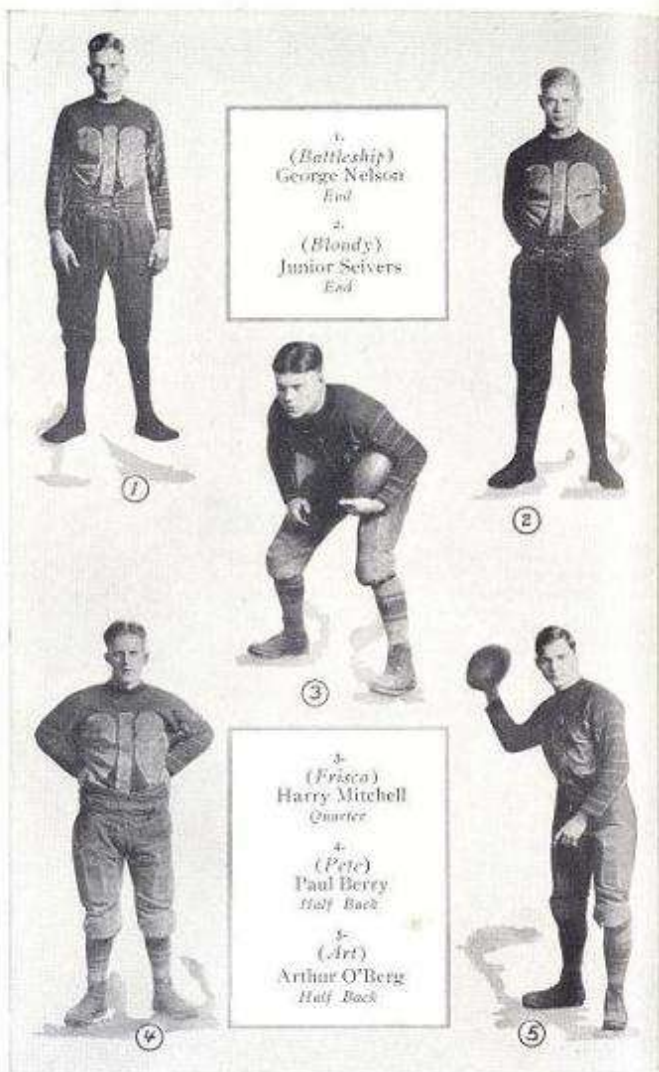
Captain Aubrey Mounger has been an endless source of inspiration and encouragement to the team, and to him a great deal of credit is due for the spirit and fight of his fellow-players.

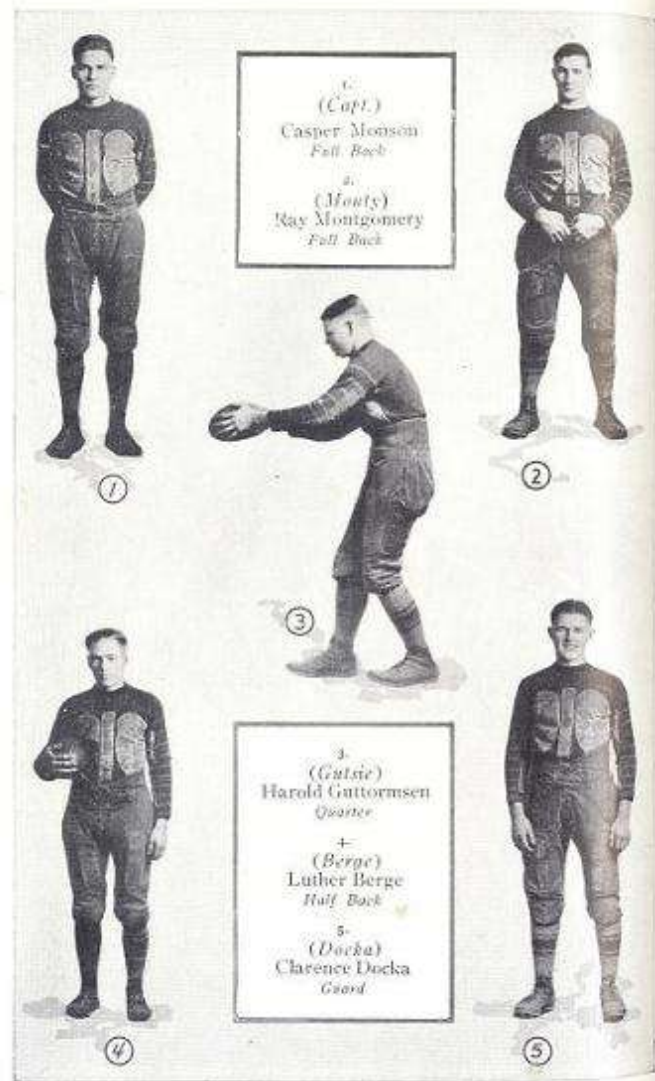
Many of Everett's football stars have played their last game for their school, and we are mourning the loss of Captain Aubrey Mounger, Ernest Johnson, John Sievers, Clarence Docka, Kenneth Junge, Casper Munson, Harold Guttormsen, George Nelson, Fred Daph, Ray Montgomery, and Bernard Webber. But there are other fighting men on the team who will be here next year to win laurels for the E. H. S.—and to them we give our best wishes and loyal support.



WESTOVER  
Captain







1  
(Capt.)  
Casper Morrison  
Full Back  
2  
(Monty)  
Ray Montgomery  
Full Back

3  
(Gutsie)  
Harold Guttormsen  
Quarter  
4  
(Berge)  
Luther Berge  
Half Back  
5  
(Docka)  
Clarence Docka  
Guard

### Basket Ball Review



GEORGE NELSON  
Manager

Everett's basketball troupes were quick to answer the call to arms.

Coach Kempkes opened the season with a group of veteran players that quickly rounded into form under his careful training.

Ted Westrom, star forward of the squad, led the team with a score of 174 points total for the season. Rude, center, was second with 107 points, and Herb Mansfield, guard, came third with 78 points.

Sherman, Johnson, Vanderbrug, Phillips, Graverock, Jaderholm and Mitchell, proved a sensation in every game they played. Manager George Nelson made an excellent schedule, in addition to the county league games.

Everett won the Snohomish County Championship by piling up 534 points against their opponents' 315; took third place in the district tournament at Sedro-Woolley, and placed in the state tournament at Seattle.

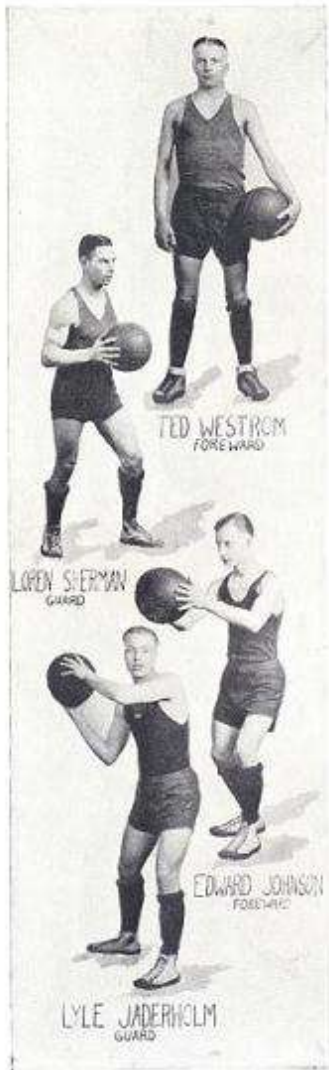
A great deal of credit goes to Harry Brooks, Donald Stykes, and Harold Berry, who turned out faithfully all season, but did not get a letter because they did not participate in enough games.

We are sorry to lose Captain Wahl, Herb Mansfield, Ed Johnson and Boyd Phillips, all of whom are graduating; but with Ted Westrom as the captain of next year's squad, we anticipate great things.

A survey of the season shows the team to have won all the county games, three out of four games played at the Sedro-Woolley tournament, and two of its four state tourney contests.



SIDNEY WAHL  
Captain



The squad's record for the season follows:

- Everett 22, Index 14.
- " 38, Monroe 13.
- " 32, Arlington 16.
- " 31, Edmonds 8.
- " 24, Edmonds 3.
- " 35, Monroe 12.
- " 55, Arlington 23.

NON-CONFERENCE GAMES

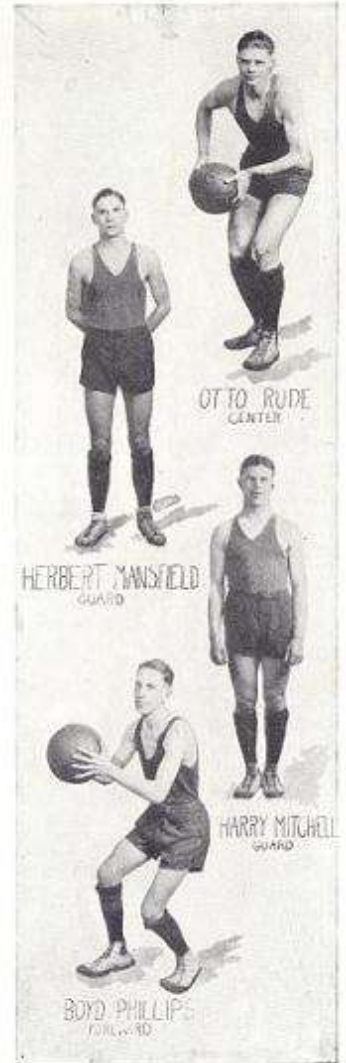
- Everett 26, Wenatchee 17.
- " 37, Bothell 15.
- " 14, Bothell 17.
- " 27, Snoqualmie 22.
- " 38, Sedro-Woolley 9.

DISTRICT TOURNAMENT

- Everett 29, Burlington 14.
- " 20, Whatcom 15.
- " 26, Edison 27.
- " 27, Lynden 18.

STATE TOURNAMENT

- Everett 20, Puyallup 9.
- " 19, Clarkston 24.
- " 19, Bothell 9.
- " 20, Whatcom 30.



## Baseball

With the coming of the balmy spring days, Coach Frank Overfield issued orders for baseball turnout.

There was a question at the first of the season as to whether Everett had enough money to purchase supplies. This obstacle was soon downed by that "ol' Everett Spirit," and season tickets were sold to cover the expense of the necessary equipment.

With Art Schroeder as captain, the team settled down to earnest work at the first of the season, which accounts much for the success of the team.

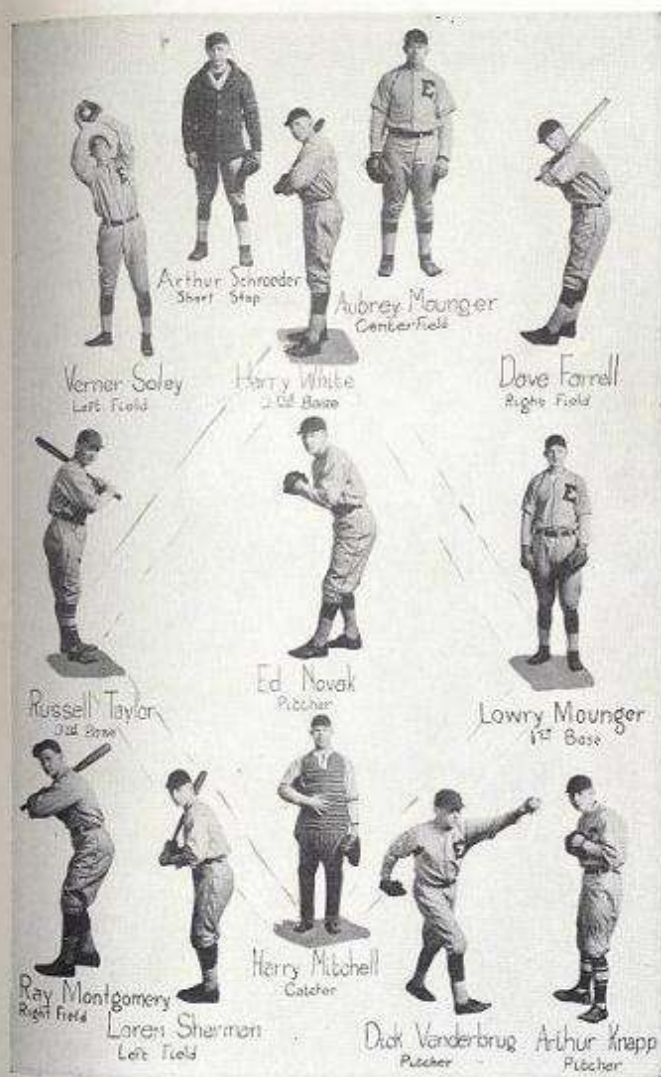
With such lettermen as Art Schroeder, Lowry Mounger, Aubrey Mounger, Harry White, Dick Vanderbrug and Eddie Novak, we were able to spell defeat in capital letters to our opponents.

Lowry Mounger was chosen manager of the team. He arranged a very good schedule.

The members of the team who received their letters are: Schroeder, L. Mounger, A. Mounger, Mitchell, White, Taylor, Solie, Farrell, Montgomery, Sherman, Novak, Vanderbrug and Knapp.

The scores of the season are as follows:

Everett	9—Monroe 0.
Everett	10—Snohomish 3.
Everett	6—J. C. Penney 2.
Everett	9—Sedro-Woolley 5.
Everett	5—Mt. Vernon 2.
Everett	5—U. of W. Freshmen 3.
Everett	10—Port Orchard 5.
Everett	13—Whatcom (Bellingham) 6.
Everett	0—Snohomish 3.
Everett	5—Arlington 1.





1925 TRACK TEAM

## Track

The 1925 track season was indeed successful. When the call was sent out for men, about twenty young aspirants issued forth in search of honors. With Coach Kempkes at the helm, the Seagulls turned out early in the spring for practice. The hard and earnest endeavor and the early practice accounts for much of the success this year.

Their first chance to display their skill was on May 2, at the Annual Snohomish County-Kiwanis Track and Field meet. Everett won the meet, as well as breaking a few records.

Otto Rude broke the county record for the shot put, by tossing the iron ball 42 feet 9 $\frac{3}{4}$  inches.

One of the most spectacular races of the meet was the half-mile by Albert Zimmerman, who came from behind and won in a thrilling finish.

To the Everett relay team composed of Law, Scheldt, Farrell and Sievers, goes a great deal of credit for winning the meet. This was one of the most thrilling and close races of the day.

To Everett came three silver loving cups,—one to the school for winning the meet; one to the school for winning the relay; and one to Law for high point man. These cups are permanent property and were presented by the Kiwanis Club of Everett.

After resting and doing light practice for a week, Vern Law, Otto Rude, Albert Zimmerman and the relay team journeyed to Bellingham to represent Everett in the district meet between Snohomish, Whatcom, and Skagit Counties.

Everett took fourth place with only three men and a relay team entered. Vern Law captured the first in the 50-yard dash; second, in the 100-yard dash, and third in the relay. Albert Zimmerman, by setting a new record, ran off with the half-mile honors. Otto Rude, the strong man of the campus, took second in the shot put and third in the discus. Our relay team came in second.

A great deal of credit is due also to Coach Kempkes who has brought to Everett for the first time a championship track team.



Law Winning 100 Yd. Dash



Zimmerman Wins One-half Mile

*"The Ol' Everett Spirit"*



CLARENCE DAILEY

YOO———Everett  
 YOO———Everett  
 RAH! RAH! RAH!  
 RAH! RAH! RAH!  
 YOO———Everett  
 RAH! RAH! RAH!

WHISKEE-WAH-WAH  
 WHISKEE-WEE-WEE  
 HOLY MACKEL  
 WASHINGTONEL  
 OH YE EVERETT HI  
 EVERETT



JOE KOCOUREK



PELZ SKALLEY ERTLE  
*Girls' Athletic Association*

The good ship Girls' Athletic Association had a smooth and profitable voyage this last trip. With the able seamen Skalley and Pelz as Chief Advisers, and with Captain Doherty as next in command, she rode calm waters and came to port ahead of most vessels on the sea.

She was so successful that other crafts have sent for her regulations and method of awarding letters to the most skillful sailors.

On all excursions there was a full crew. At the roller-skating party there were many passengers as well as the crew themselves. Also, the circus, which was given in the saloon, was well attended. On that occasion, many sedate seamen became monkeys, clowns, and even French dolls.

All hands were out for the party given for Commodore Skalley, and danced together the jolly horn-pipe. The crew felt sad at losing such a capable, friendly officer, but glad for her that she had the chance to man a larger ship.

For the excursion "Basketball Banquet," given in honor of the seamen who had turned out for basketball, Ex-Commodore Skalley was a guest and glad the sailors were to see her.

These were the outstanding features of the cruise of this famous ship.

Now a hearty cheer for Commodore Pelz, and wishes for even greater success on the next trip!

VESTA LARSON.

NESIKA



SOPHOMORES BASKET BALL TEAM  
SCHOOL CHAMPIONS



GIRLS' ATHLETIC CLUB



# ORGANIZATIONS



## *Clubs*

The clubs of the high school are very interesting and instructive. They represent almost every department of education, and therefore furnish a wide range of choice.

Many new clubs have been organized during the last two years, which have greatly increased club membership. There is no club, however, which gives membership to the Freshmen.

This semester an old plan is being again tried out; the clubs are meeting in the evening, once a month. This, when in usage before, was very greatly mistreated, and for that reason was discontinued. Mr. Baisden, however, wishes to give it another trial.

For the most part, club programs consist of features pertaining to the nature of the various clubs. Sometimes talks are given by local business men. An adviser is appointed from the department of which the club is a part. Officers are elected twice a year.

With capable students and advisers, clubs bid fair to be very popular and worth while.



### Service League

Our only honorary club, the Service League, is founded on the motto, "Service, Leadership, and Scholarship." This year it has had about thirty-four active members, who, along with taking care of the lost and found articles, and the Girls' Rest Room, have given service to the school by doing individual assignments given to them by Mr. Baisden.

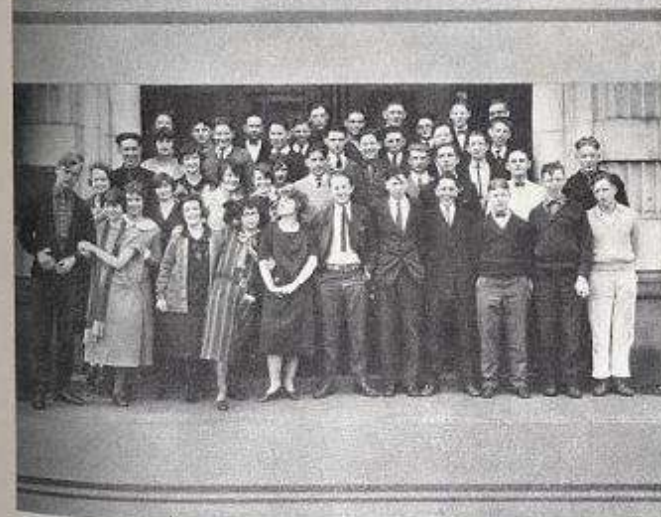
To gain membership in the Service League, a student must have won one hundred points in Service, Leadership and Scholarship. Miss Platt and Mr. Robb are the advisers for this year. The officers are Don Van Winkle, president; Edith Van Derwerker, secretary-treasurer; Beryl Wilson, sergeant-at-arms, and Bryce Wood, historian.

### Olympic Club

The Ace of Clubs started on a new career this semester, having a new adviser, Mr. Morgan, and many new and prominent members.

The Olympic Club aims to give its members practice and development in the art of public speaking, and parliamentary instruction.

The officers for the year were: Herbert Mansfield and Alice Johnson, presidents; Myron Sjoström and James Rowe, vice-presidents; Alice Johnson and Emma Kornitzer, secretary-treasurers; Verne Sievers and Miriam Fischer, sergeants-at-arms; and Verner Solie and Clarence Docka, parliamentarians.



### Music Club

The Music Club has advanced this year. It has had many enjoyable musical numbers at its meetings, and has studied the lives and compositions of some of the great musicians. Wilma Black was president; Ella Goff, secretary, and Ruth Anderson, treasurer. Miss Esther Sather, the adviser, helped in its success and rapid growth.

### Thrift Club

The Thrift Club has been organized this year to encourage thrift in the school. One representative was elected from each room as a member of the club. These pupils met once a month on Monday morning at eight o'clock. The officers for the year were: President, Avery Pabst; vice-president, Clarence Dailey; secretary-treasurer, May Klopfenstein. The various rooms were divided into groups with their respective captains. The object was to see which side could get the highest percentage in thrift. Mrs. Payzant was the adviser.

### Spatterine Club

The Spatterine Club, as the name suggests, is the literary club, of which Miss Everton is the adviser. Ruth Egbert, president; Flora Hamilton, vice-president, and Harriette Shelton, secretary-treasurer, were the officers for the second semester. This year instead of only one prize each semester for the best and most original story, two prizes were given; one for the best short story, and one for the best of any other kind of literary contribution, such as a poem, or an essay. Officers for last semester were Zenonia Smith, president; Ellen Wardell, vice-president; Harriette Shelton, secretary-treasurer.



### Spanish Club

The purpose of the Spanish Club is to enable the members to use their Spanish a little more informally than in class, and to study about Spanish speaking countries. Club members made and worked out some very clever Spanish cross-word puzzles at their meetings.

The officers for the first semester were Frank Rowe, president; Anna Noble, secretary-treasurer, and Paul Ellis, vice-president. For the second semester they were Frank Rowe, president; Hannah Alseth, vice-president, and Anna Noble, secretary-treasurer.

### Dramatic Club

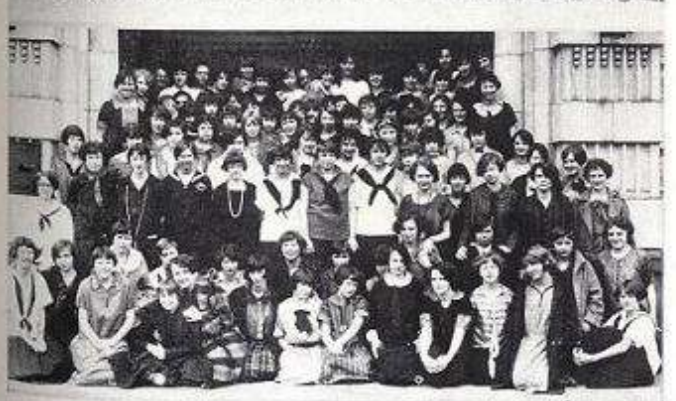
The Dramatic Club, with Mr. Countryman as adviser, has worked up some very interesting short plays.

The officers of the first semester were Donald Van Winkle, president; Margaret Rucker, vice-president, and Vivian Powell, secretary-treasurer. For the second semester they were Griffith Brick, president; Barbara Allen, vice-president, and Helen Baldwin, secretary-treasurer.

### Girl Reserves

The High School Girl Reserves have accomplished much this last year. They have given parties for poor children, and big sister parties for entering Freshmen, besides donating Thanksgiving baskets.

The officers for this semester are Nina Bachelder, president; Sue Lyke, vice-president; Dorothy Wahlmacher, secretary, and Elsie Rasmussen, treasurer.



### Travel Club

One of the most interesting clubs of the high school is the Travel Club, which is under the supervision of Miss McCowan. Its members travel around the world to learn about important things and places in different countries.

Verne Law is president; Beatrice Tallman is vice-president; Amorette O'Brien is secretary.

### Sphinx Club

The Sphinx Club has proved to be one of the most popular and instructive clubs in the school. The club was established in order to increase interest in historical subjects and knowledge in historical facts. Mrs. Newton, the adviser, has been a source of inspiration to the members. Officers for the first semester were as follows: president, Marian Payzant, and secretary-treasurer, Beulah Laughton. During the second semester Margaret Gunter was president and Clifford Wold, secretary-treasurer.

### Masqueraders

The Masqueraders Club, formerly the Dramatic Club B, has made a name for itself in the first year of existence. With Miss Hutchinson to help them, the members have endeavored to improve along the line of dramatics.

The officers for the year were Helen Durand, president; Charles Shepard, vice-president; Hught McGuinness, secretary; treasurer; and Ralph Johnson, sergeants-at-arms.



### French Club

The French Club has had a very successful year. It has had twenty-five members, and the following officers: Helen Hunt, president; Alida Knudsen, vice-president, and Alli Lou Jamison, secretary-treasurer. Their meetings consisted of a "Mardi Gras Carnival," a Christmas program, and talks on the people and customs of France. Miss Chappelle was the adviser.

### Radio Club

The Radio Club has been working out individual problems in radio, bettering the radio reception and studying it in general. The members have enjoyed many programs over the radio this year.

The officers for the first semester were Edward Ringman, president; Russell Taylor, vice-president, and Fern Forbes, secretary-treasurer. The second semester officers were president, Marvin Wilson; Edward Ringman, vice-president; Fern Forbes, secretary-treasurer; Russell Taylor, sergeant-at-arms.

### Campfire

There are five Everett Campfire groups which have high school girls in them.

These are Owaissa, guardian, Miss E. Pelz; Dushobahbb, guardian, Mrs. J. A. Varley; Memook, Mrs. W. Gaston; Lohache, Miss Mary Byers; and Beeigi, Mrs. T. Reid of Beverly Park.

This year the girls have given two inter-camp banquets, both of which were very well attended, that enabled them to meet and become acquainted with their many campfire sisters. February 28, an all-camp party was given in honor of Mrs. Varley, who organized campfire in Everett.



### Commercial Club

In creating greater interest in commercial and business lines, the Commercial Club has made much progress this year. They have had many talks on these subjects, including some from business men of Everett. The officers for the year were Maurice Thompson and Evelyn Carboneau, presidents; Evelyn Carboneau and Bertha Burkland, vice-presidents; and Bertha Jackson and Phyllis Esty, secretary-treasurers. Mrs. Payzant is the club adviser.

### Hi-Y Club

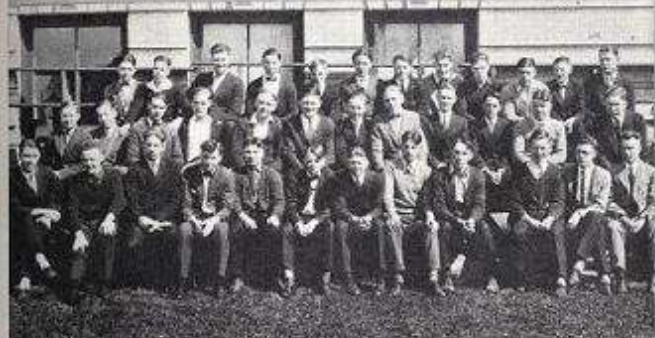
The Hi-Y Club is our largest boys' club in the school. It has been under the able supervision of Mr. Stenshoel, high school adviser, and Mr. Bigelow, Y. M. C. A. adviser.

The officers for the first semester were Donald Van Winkle, president; Frances Burch, vice-president, and Sidney Wahl, secretary-treasurer. For the second semester, Kenneth Kingsley was president; Clarence Docka, vice-president; Beryl Wilson, secretary, and Edwin Chase, treasurer.

The motto of the club is "We shall try to create and maintain throughout our school and community, high standards of Christian character."

### Home Economics Club

The Home Economics Club has had some interesting cake and candy contests. They have also worked up some home economics plays. The officers are Thora Newell, president; Mary Putman, vice-president, and Gertrude Jensen, secretary-treasurer. Mrs. Kantner is the adviser of the club.



### Science Club

The followers of Science, with the aid of Miss Jane Taylor, have taken up some interesting points in the subject. They have emphasized inventions and their inventions. The officers for the year were Willard Melby and Hilaf Anderson, presidents; Roy Hartman and Ansgar Berge, vice-presidents; and Francis Burch and Jure Sievers, secretary-treasurers.

### Latin Club

The Latin Club, with Miss Shave as adviser, has had some very interesting programs, pertaining to Rome and the old Romans.

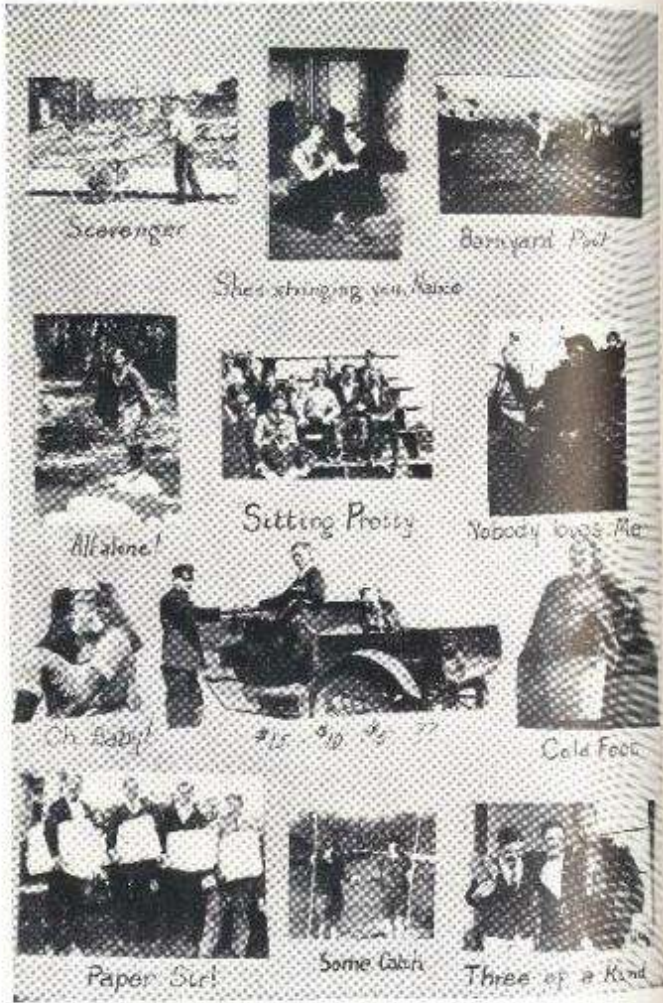
The officers were first consul (president), Margaret Robson; second consul (vice-president), Charlotte Bergstrom; quaestor (secretary), Mary Hartley; aedile (treasurer), Helen Giersch, and the senate (program committee), Jene Clough, Lawrence Olwell, and Faith Gaston.

### Art Club

This year the Art Club has specialized in a study of art appreciation of old masters and their pictures. The officers were Bertha Rasmussen, president; Lola Meyer, vice president, and Gladys Philipotemax, secretary treasurer. Estler Anderson was secretary for the last semester. Miss Jones is the faculty adviser of this club.



NE S I K A



# DRAMATICS





## Senior Play

The Senior Class chose for their annual play, "Nothing But the Truth," by James Montgomery. It is one of the most noted, popular, and amusing comedies of the American stage.

Is it possible to tell the absolute truth even for twenty-four hours? It is—at least Bob Bennett, the hero of this sprightly comedy, accomplished the feat. The bet he made with his business partners, and the trouble with his partners, his friends and his fiancée are only a part of the many interesting situations in the play.

The part of Bob Bennett was taken by Gordon McNeil. Although without previous stage experience, he showed marked strength in interpreting the role of the unfortunate hero.

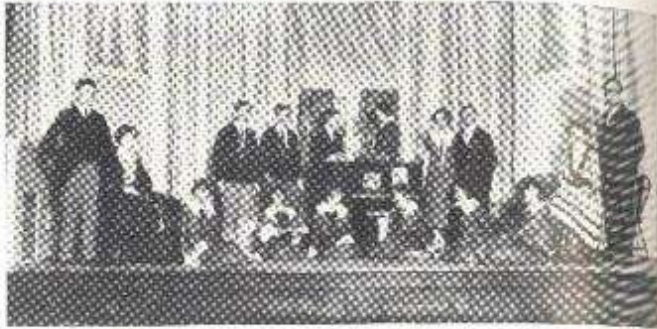
The part of Bob Bennett's fiancée, Gwen Ralston, was charmingly interpreted by Virginia Garrison.

The other parts in the play were also exceptionally well taken by the other members of the cast.

A great deal of credit is due to G. C. Contryman and Miss Scroggs who directed the young actors in this interesting play; and to Charles Twelves, business manager; Adrian Bartholomew, stage manager, and Le Roy Slingerland, electrician.

Following is the cast:

<i>Bob Bennett</i> .....	Gordon McNeil
<i>Gwen Ralston</i> .....	Virginia Garrison
<i>E. M. Ralston</i> .....	Don Van Winkle
<i>Mrs. Ralston</i> .....	Neva Ruppé
<i>Ethel Clark</i> .....	Vivian Powell
<i>Dick Donnelly</i> .....	Henry Brown
<i>Bishop Doran</i> .....	Richard Store
<i>Van Darsca</i> .....	Charles Shepard
<i>Mable</i> .....	Maida McLeod
<i>Sabie</i> .....	Ella Husted



## Dramatic Club Play

"The Charm School," a three act comedy by Alice Duer Miller and Robert Milton, was presented by the Dramatic Club and the Masqueraders on April Third and Fourth.

Austin Bevans, a young automobile salesman, inherits a girls' boarding school from his aunt. He turns the institution into a school for teaching charm. As the lessons in charm progress, Mr. Bevans falls in love with Elise Benedotti, the president of Senior class. Complications arise which make the play unusual and interesting.

### CAST OF CHARACTERS

<i>Austin Bevans, the heir to a girls' school</i>	George Nelson
<i>Elise Benedotti, president of the Senior Class</i>	Sara Stapleton
<i>David MacKinnon, a law student</i>	Bryce Wood
<i>George Boyd, an expert accountant</i>	Everett Gray
<i>Tina and Tom Simpson, twins who toil not</i>	Hugh McLaughlin, Dan Eye
<i>Homer Johns, guardian of Elise</i>	Donald Van Winkle
<i>Miss Pratt, teacher</i>	Dorothy Leonard
<i>Miss Corbin, secretary</i>	Barbara Allen

### THE SENIOR CLASS

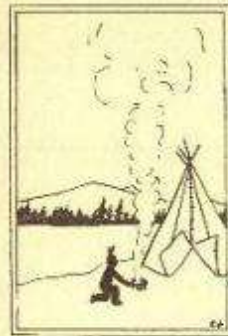
<i>Sally Boyd</i>	Helen Delewin
<i>Muriel Doughty</i>	Nancy Hansen
<i>Libel Spetson</i>	Evelyn Taylor
<i>Alex Mercer</i>	Mary Torrey
<i>Ellen Staffer</i>	Nina Bachelder
<i>Trina</i>	Vesta Larsen

### Directors

Miss Daisy Hutchinson Miss Helen Darragh

*Business Manager* Charles Sheppard    *Property Manager* Adrian Bartholomew    *Stage Manager* M. G. C. Courtisman

The furniture was loaned through the courtesy of the White Furniture Company



# ACTIVITIES

# NESIKA



RALPH JOHNSON

MIRIAM FISCHER

HELEN DURAND

Declamation Winners

## *Declamation*

This year three preliminary declamatory contests and one final one were held, Miss Bowman supervising them all. The final contest, held in the high school auditorium January 21, before the student body, was composed of the winners of the previous three contests. Those who received their E. H. S. pins were Ralph Johnson, Miriam Fischer, and Helen Durand.

### FIRST CONTEST

November 20, 1924

Gunga Din.....	FRANK GREENE	<i>Rayford Kiblin</i>
David and Goliath.....	MIRIAM FISCHER	<i>Selected</i>
How Tom Sawyer Painted the Fence.....	MIRIAM FISCHER	<i>Mark Train</i>
Vocal Solo—"Would I Were a Tender Apple Blossom".....	LOUISE SWAIN	<i>Robbs</i>
From a Far Country.....	MIRIAM FISCHER	<i>Selected</i>
Characteristics for a Great Lawyer.....	EVERETT GRAY	<i>Phillips</i>
Scene from Macbeth.....	LOIS McSWAIN	<i>Shakespeare</i>
Commencement.....	WENDY MARSHALL	<i>Selected</i>
Piano Solo.....	TRULICA HAINES	<i>Selected</i>

The judges were Mrs. C. S. Startup, Mr. C. T. Roseco, and Dr. Gunter.

The decision of the judges was as follows: Miriam Fischer and Lois McSwain.



SECOND CONTEST

December 3, 1924

Dot Little Boy of Mine.....	James Whitcomb Riley	.....	Selected
	VIGLA SWENSON		
Selections from Paul Lawrence Dunbar.....			
	KATHERINE ZERN		
Vocal Solo—"Birth of Man".....		.....	.....
	WILMA BLACK		
Dower Scene from "King Lear".....	Shakespeare		
	ARLENA KYRS		
The Story Teller.....	James Whitcomb Riley		
	WILLIAM LANE		
Woe Willie Winkle.....	Rudyard Kipling		
	CARO MAY SAWYER		
How the La Rue Stakes Were Lost.....	.....	.....	Selected
	EVELYN TAWLKS		
Farmer Whipple, Bachelor.....	James Whitcomb Riley		
	ROSE BAILEY		
How Ruby Played.....	.....	.....	Naughty
	ELLA HUSTON		
Quarrel Scene Between Brutus and Cassius.....	Shakespeare		
	RALPH JOHNSON		
Piano Selections.....	.....	.....	Selected
	ELIZABETH DORR		

Judges: Rev. W. H. L. Marshall, Mr. Howard Reif, and Mrs. Edna Gibbon.

The decision was given to Evelyn Tawilks and Ralph Johnson; Caro May Sawyer was chosen as alternate.

THIRD CONTEST

December 17, 1924

Violin Solo.....	.....	.....	Selected
	MARIAN PAYLANT		
"If".....	Rudyard Kipling		
The Baseball Game.....	.....	.....	Selected
	FREDRICK RUST		
Speaking of Operations.....	Irvin Cobb		
	CORNELIA THAYER		
Vocal Solo.....	.....	.....	Selected
	RICHARD STONE		
Taxes.....	.....	.....	Selected
	HERBERT MANSFIELD		



The Americanization of Andre Francois.....	.....	.....	Selected
	HELEN DURAND		
Johnny Gets Ready for Company.....	.....	.....	Selected
	BARBARA ALLEN		
Piano Solo.....	.....	.....	Selected
	ELIZABETH GALE		

The judges were Mrs. J. Spencer Purdy, Rev. Robert Reid, and Mr. Thomas Stiger. The decision of the judges was as follows: Helen Durand and Barbara Allen, with Herbert Mansfield as alternate.

FINAL CONTEST

January 21, 1925

Johnny Gets Ready for Company.....	.....	.....	Selected
	BARBARA ALLEN		
Scene from Macbeth.....	Shakespeare		
	LOIS McSWYEN		
How the La Rue Stakes were Lost.....	.....	.....	Selected
	EVELYN TAWLKS		
How Tom Sawyer Painted the Fence.....	Mark Twain		
	MIRIAM FISCHER		
Quarrel Scene Between Brutus and Cassius.....	Shakespeare		
	RALPH JOHNSON		
Americanization of Andre Francois.....	.....	.....	Selected
	HELEN DURAND		

This final contest was judged by Mrs. F. Cooper, Mrs. C. Spriesterbach and Mr. J. Y. Kenzely. The decision was awarded to Ralph Johnson, Miriam Fischer, and Helen Durand.



EDWIN CHASE

CARL SWANSON

HELEN DURAND

MR. THOMPSON

MORRIS DALE

DONALD VAN WINKLE

GRIFFITH BRICK

## Debate

Success was the motto of the 1925 debating team and success became a realization. This goal was attained only through the hard work and diligent study on the part of the members of the team, and the untiring and efficient help of the Coach, Mr. Thompson. Our team this year won all four debates, an honor that has been accomplished only once before, in the early history of our high school.

The tryout for the team was held early in the fall and the following were chosen to represent Everett High School: Affirmative—Griffith Brick, Carl Swanson and Don Van Winkle; negative team—Edwin Chase, Helen Durand, and Morris Dale.

Our first debate of this season on the question, "Resolved that the Philippines Should be Granted Their Immediate Independence," was held at Lake Stevens. The Lake Stevens team supported the affirmative and the Everett debaters the negative, but the Everett team was too strong for the Lake Stevens group and we received the decision.

Our next debate was held at home with Burlington as our opponent. Burlington argued the negative and Everett the affirmative. Everett again proved successful.

A practice debate was held at Seattle. Lincoln High School supported the negative and Everett the affirmative. A few words explain the situation; Everett won. The sides of the question were reversed and Lincoln Hi came to Everett, only to be again defeated.

Another interesting practice debate, which Everett lost, was with the Badger Club of the University of Washington. Everett maintained that the islands should not be granted independence.

Our third official debate was held at home, when we met Fairhaven High School of Bellingham. Griffith Brick replaced Morris Dale, who graduated in mid-year. Fairhaven did not have the subject as well mastered as the home trio and therefore lost the debate. Everett upheld the negative and Fairhaven the affirmative.

The fourth and last debate of the season was held in Mount Vernon. The teams were very evenly matched, but the competent home team with the affirmative side was a little too strong for the negative Mount Vernon team.

Although Everett won all four debates we did not receive the district championship. We lacked two votes of being victorious; therefore, the championship went to Anacortes. But look out for the 1926 team!



## Minstrel Show

The seventh annual Minstrel Show, given December 19-20, was the best one that Everett audiences have seen in a good many years. Under the able direction of Maurice Byers, the black-faced comedians took on the air of professionals. A great deal of credit is due, also, to Bernard Geary, manager, and to Mr. Rose and Mr. Kempkes, faculty committee.

The end men, Van Winkle, Montgomery, Calhoun and Sievers, nearly caused a riot with their clever jokes and stunts. Mr. Jay Kempkes acted as interlocutor.

The program was as follows:

### FIRST PART

Opening Chorus.....E. H. S. MINSTREL CHORUS AND CHIEF

Introduction of End Men.....COLONEL KEYSER

#### Tambourines:

FELS NAPHEA VAN WINKLE.....GLO-CO MONTGOMERY

#### Bells:

TALCOM CARDERIE CALHOUN.....ICE CREAM EDWIN SIEVERS

Vocal Solo....."That's George"

ADRIAN BARTHOLOMEW

Vocal Solo....."I'm Someone Who's No One to You"

RICHARD STONE AND CHORUS

Vocal Solo....."You Got Those Old Virginia Pickering Blue"

FRED BOWDEN AND CHORUS

Piano Solo....."Daisy Mae"

JESSE CARROLLAU

Vocal Solo....."School Day Sweethearts"

GRIFFITH BRICK AND CHORUS

Song....."Sweet Little You"

E. H. S. MINSTREL QUARTET



## Minstrel Show

### SECOND PART

Act 1. "Tickled to Death."  
ADRIAN BARTHOLOMEW AND HUGH MCGUINNESS

Act 2. "Musical Interpolations."  
E. H. S. MINSTREL ORCHESTRA

Act 3. "What Is It?"  
LEOGRY GRAY AND ANDY MCGUINNESS

Act 4. "Hooligan's Army."  
STANLEY WALSH, LOREN SHERMAN AND TOM OCKIEWICZ

Act 5. "Dream Daddy."  
GRIFFITH BRICK AND NORVAL BENNAL

Act 6. "It's Easy If You Know How".....By the Blindair Bros.

HERB MANSFIELD AND ART SCHROEDER

Act 7. "Super-Production De Luxe."  
PRINCE DONLO ASSISTED BY PRINCE HERB MORA

### ORCHESTRA

George Francis  
Egbert Westover  
Dan Goff  
Lysle Jaderholm  
Elinor Okerstrom  
Almer Peters

Kenneth Kingsley  
Delwyn Rose  
Bob Wiester  
Beverly Wiester  
Clarence Taylor

### CHORUS

Eli Anderson  
William Bell  
David Bishop  
Norval Binnal  
Griffith Brick  
Winston Brown  
Henry Brown  
Fred Bowden  
Floyd Burden  
Adrian Bartholomew  
Fred Doph  
Dick Frye  
Tallas Enger  
Lloyd Gregor  
Percy Gates  
Ralph Johnson  
Kenneth Junge  
William Compat  
George Nelson  
Willard Melly  
Dan Phipps  
Arthur Johnson

Harry Mitchell  
Richard Stone  
Verne Sievers  
John Sievers  
Ray Montgomery  
Avery Pabal  
Glean Miller  
Allen Spence  
Orville Walker  
Marvin Wicklund  
Lurtee Day  
Loren Sherman  
James Rowe  
Eugene Cole  
Ansgar Berge  
John Jordan  
Verner Saly  
Arthur Schroeder  
Harry Spence  
Rhosian Clew  
Reryl Wilson  
Frank Rowe

Accompanist for Chorus, JESSE CARROLLAU



## Blue and Gold Mid-Year Program

The first Blue and Gold Mid-year Program was held in the high school auditorium, Friday evening, January 23, 1925. This entertainment was given in place of the annual candy sale.

The committee in charge was Miss Carlisle, Miss Sather, Miss Skalley, Mrs. Payzant, Miss Phenev, Mr. McGinnis, Mr. Wallber, Mr. Sheldon, Gordon McNeil, John Sievers, Bernard Geary, Miriam Fischer, and Allison Lloyd.

The program was as follows:

1. High School Orchestra
  - a. Dance of the Crickets..... *Serody*
  - b. Stony Point..... *Serody*
2. Reading—Aunt Hannah Hayseed in the City..... *Walter Ben Hart*  
CARG MAY SAWYER
3. Advanced Girls' Glee Club
  - a. Around the Gypsy Fire..... *Brooks*
  - b. Honey-Town..... *Parke*
4. Farce—The Alphabet Tragedy
 

Hans Grage	Muriel Goforth
Thomas Frey	Orin Skaug
Alice Murphy	Fletcher Lake
Allison Lloyd	Selma White
Everett Stutz	Francis Boyle
	Lawrence Walton
5. The Tumbling Tommies
 

Billy Gowan	Ray Rodman
Jack Montgomery	Arthur Johnson
Howard Kirtley	Herbert Larson
6. Quartet
 

Vocal—Einar Obergstrom	Piano—Bernice Tweeddale
Saxophone—Kenneth Greaves	Drum—Delwyn Ross
7. Folk Dance..... *Irish Jig*

Rowena Anderson	Dorothy Pellock
Marjorie Blackledge	Muriel Scheldt
Escher Davies	Myrtle Sutherland
Miriam Fischer	Irene Swanson
Jessie Lermonde	Helen Walsh
Julia Nypton	Katherine Zeray



8. Natural Dances
  - a. May Day Gallop
  - b. Three Graces
  - c. Skip for Three

Charlotte Bergstrom	Dorothy Jeffries
Dorothy Demarist	Lillian Keele
Elizabeth Gable	Vesta Larsen
Signa Hammer	Anna Noble
	Helen Zehle
9. Folk Dance
 

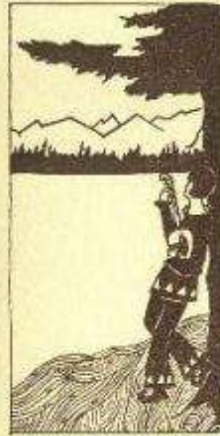
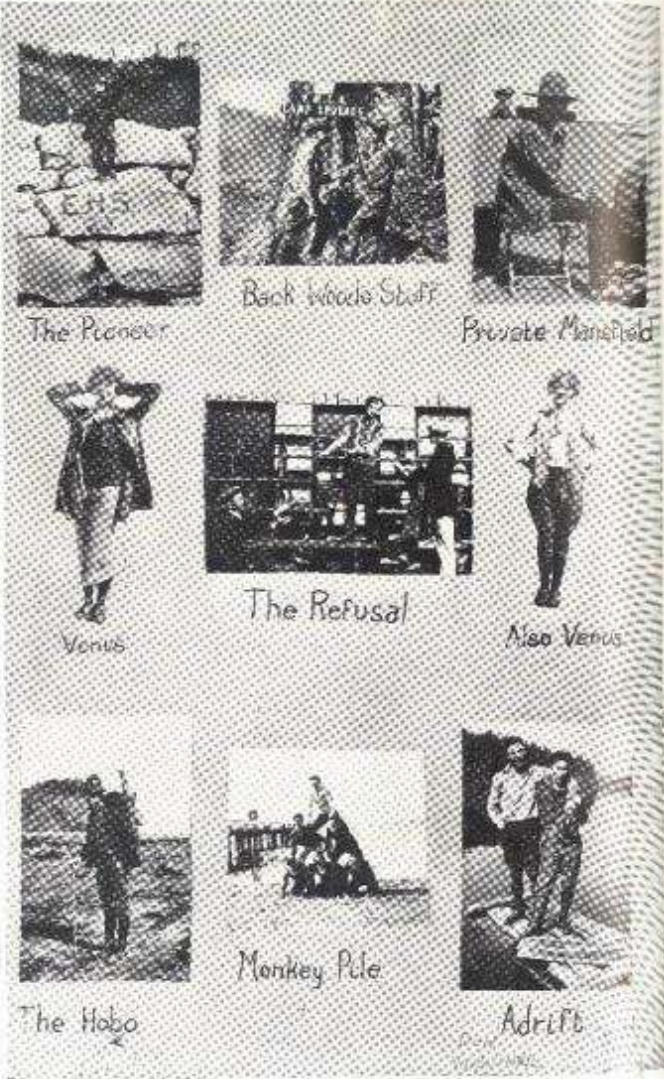
Helen Brown	English Sword Dance
Elsie De Witte	Mildred Morris
Delores Doherty	Elizabeth Mortland
Pearl Melby	Bertha Rasmussen
	Elsie Rasmussen
10. Boys' Glee Club
  - a. Haste to the Bower of Sir Robin Hood..... *Moffat*
  - b. Luckey Jim..... *Shattuck*
11. One-Act Play..... "The Silly Ass"

### CHARACTERS:

The Grandmother.....	Nellie McGee	
The Mother.....	Marjorie Davis	
The Daughter.....	Margaret Rucker	
The Father.....	Gordon McNeil	

The folk dances were under the direction of Miss Kathleen Skalley and Miss Erna Pelz. Miss Ariss and Mrs. Mason of the Home Economics Department took charge of the costuming. Mr. C. G. Countryman supervised the lighting, and directed the play.

NESIKA



# MUSIC





### *Miss Sather*

To our leader and inspiration, Miss Esther Sather, we owe the development of our musical organizations. She has encouraged us when the way was hard, has been a severe critic when necessary, but always has been our best friend.

She has made herself essential to our musically artistic life, and has endeared herself personally to everyone with whom she comes in contact.

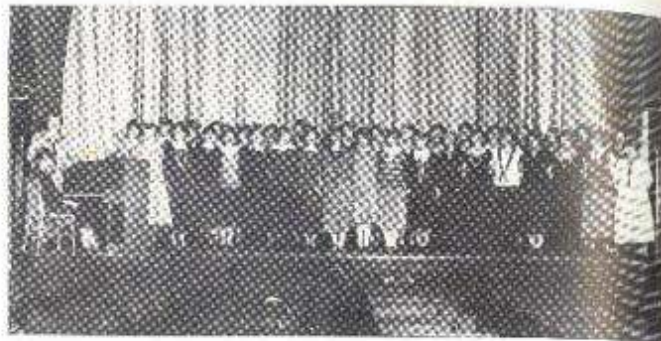
In fact, our musical associations have been happy because of mutual interest; verily, one of the real joy spots in the E. H. S. curriculum. Long shall we cherish the memory of Glee days!

### *Chorus*

Chorus consisted of about one hundred voices. This was also under the direction of Miss Sather. It met once a week after school, on Tuesdays. Flavia Van Dyke was the accompanist.



THE PEP BAND



## Advanced Girls Glee

The Advanced Girls' Glee Club has already assumed a professional air in rendering its numbers. Its public appearances have been steadily improving. It meets twice a week, on Mondays and Wednesdays. The officers for the first semester were president, Vivian Powell; secretary-treasurer, Margaret Rice; librarian, Mildred Bass, and her assistant, Iris Sims. Margaret Rice left during the semester and Ella Goff was elected to take her place. Officers for the second semester were president, Mary Torrey; secretary-treasurer, Helen Carlson, and librarian, Wilma Black. June Carboneau was the accompanist.

Members of the club were as follows:

Leona Ault	Myrtle Larson
Dorothea Ames	Dorothy Leonard
Martha Anderson	Concordia Lubach
Mildred East	Mixine Morrow
Wilma Black	Glady Mude
Thelma Butler	Pearl Muck
Helen Carlson	Elizabeth Mroger
Floy Cain	Vivian Powell
Marjorie Davie	Mildred Reid
Velma Davis	Margaret Rice
Ann Demovar	Margaret Rucker
Elizabeth Doph	Neon Ruppel
Mary Fogarty	Hazel Scaman
Elizabeth Gable	Iris Sims
Ella Goff	Mildred Skagle
Lelia Goodrich	Sara Stapleton
Margaret Graham	Louise Stiger
Nancy Hanson	Viola Swenson
Rosalie Hoefler	Mary Torrey
Lucille Hoyer	Beatrice Walsh
Doris Hyatt	Mary Walter
Thelma Ingle	Claire Whitney
Leona Jarnae	Helen Zelle
Verz Lake	



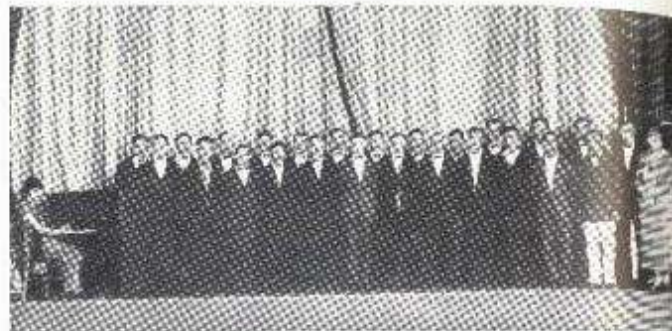
## Orchestra

The Orchestra has brought much credit to Everett High School, especially the music department, by the many excellent performances it has given this year. It has been very highly appreciated when it has played at assemblies.

The officers for the first semester were president, Howard Faller; secretary-treasurer, Verne Sievers, and librarian, Bob Wiester. Officers for second semester were president, May Sievers; secretary-treasurer, Bob Wiester, and librarian, Clarence Taylor.

The personnel of the orchestra is as follows:

<i>First Viola</i>	<i>First Cornets</i>
May Sievers (Concert Meister)	Lyle Jaderholm
Margaret Carlson	Dan Goff
Anna Grace Ragsdale	<i>Second Cornet</i>
Elinor Olostrom	Darwin Aboen
<i>Obligate Viola</i>	Roy Sigartson
Marjorie Blackledge	Leann Steiner
Iola Laughton	William Allen
Bob Compau	<i>E Flat Saxophone</i>
Evelyn Small	Jack Emmons
<i>Second Viola</i>	<i>B Flat Saxophone</i>
Edith Carlson	Clarence Taylor
Marion Schoch	Kenneth Grennes
Ben Lowenthal	<i>Baritone</i>
Orto Skaug	Frank Whitechurch
Tom Fry	<i>Drums</i>
Charles Hall	Everett Falls
<i>Clarinet</i>	<i>Harp</i>
Verne Sievers	Elizabeth Gable
Thomas Collins	<i>Piano</i>
<i>Trombone</i>	Flacia Van Dyke
Bob Wiester	
Hills Collins	



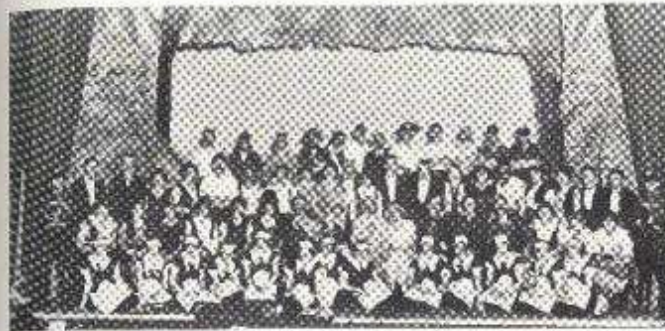
### *Advanced Boys Glee*

The boys of this glee club have given evidence of some excellent work, under the capable supervision of Miss Sather. They have quite a number of accomplished soloists among them. They meet twice a week, Tuesdays and Thursdays. The officers for the first semester were president, Richard Stone; secretary-treasurer, Fred Bowden; and librarian, Washburn Hall. Officers for the second semester were president, Lilif Anderson; secretary-treasurer, Verner Soley; and librarian, Ralph Johnson.

Members of the glee club were as follows:

Lilif Anderson  
Adrian Bartholomew  
William Bell  
Norval Benall  
David Bishop  
Fred Bowden  
Griffith Brick  
Winston Brown  
Floyd Burden  
Fred Doph  
Tallas Foger  
Dick Fry  
George Francis  
Percy Gates

Lloyd Greger  
Washburn Hall  
Willie Harris  
Arthur Johnson  
Ralph Johnson  
Glenn Miller  
Jack Paterson  
William Peabody  
Dan Phipps  
Harry Spence  
Arthur Schroeder  
Verner Soley  
Allen Spence  
Richard Stone



### *"Captain Crossbones"*

Our first venture into the operatic circle, "Captain Crossbones," given May 16-18 in the high school auditorium was a great success.

The leading roles were ably interpreted by Orville Walker as Richard Stoneybroke (baritone) an American planter, and Louise Siger as Theresa (soprano). The other parts were well taken by Pierre Carter as Don Cubel de Cigarro (tenor) a Spanish Grandee, Thelma Butler as Donna Isabella (contralto) his wife, Wilma Black as Eleanor (mezzo-soprano) an American heiress, Mildred Slagle as Miss Pelling (contralto) a tutoress, Griffith Brick as Captain Bombastio (tenor) of the Island Police, William Peabody as Anthony Law (light baritone) the legal advisor, Ralph Johnson as Bill Pilgrim (bass) a retired pugilist, Elizabeth Doph as Kitty the postmistress, and Arthur Schroeder and Hollis Beasley as Zim and Zam the Island Police.

Don Cubel de Cigarro is a haughty, explosive, old Spanish Grandee, whose one daughter, Theresa, he is determined shall marry some Spanish nobleman she has never seen, so he keeps her virtually a prisoner within his estate at Havana. Theresa has fallen in love with a young planter, Richard Stoneybroke, who is determined to secure Theresa for his own. To accomplish this he conceives a bold scheme and carries it out with unqualified success. He and a number of his friends disguise themselves as a band of pirates and invade the old Don's estate, frighten away



the servants, and carry off Theresa. From this daring episode a very interesting plot evolves.

The chorus parts were taken by the Boys' and Girls' Glee Clubs combined, accompanied by the orchestra. Much credit is due to Miss Sather for the directing of the operetta, and to Mr. Countryman for his valuable assistance, which added much to the success of the production. As the opera proved so popular, it is the desire of all to have one of its kind put on by the musical organization every year.



### *Girls' Intermediate Glee*

The Girls' Intermediate Glee was formed for the purpose of preparing the girls for advanced glee. It has been given some careful training, which will make a wonderful foundation for advanced work. The officers for the first semester were president, Virginia Bergstrom; secretary-treasurer, Harriet Pickett; and librarian, Vera Lake. The officers for the second semester were Elizabeth Mortland, president; Evelyn Crow, secretary-treasurer; Doris Hardwick and Edithella Reed, librarians. Bernice Tweeddale was accompanist. The club met fifth period on Wednesday.



### *Our Janitors*





# HUMOR

# NESIKA



Blondie—"If you don't leave at once I'll call my husband; he used to play football with Arlington."

Tramp (Awb.)—"If you love your husband, lady, don't; I used to play with Everett."

\* \* \*

Johnnie (looking from the window)—"Mamma, there's some girls on horseback and they've got those funny looking clothes on."

Mamma—"What? Kriekers?"

Johnnie—"Oh, no, mamma they're white people." *Wampus.*

\* \* \*

The meanest man in the world is the warden who put a tack in the electric chair.

\* \* \*

Waitress—"Chilly tonight, isn't it?"

Tough Seivers—"No, tanks, none of dem Mexican dishes for me."

\* \* \*

Bum—"You'll ruin your stomach, my good man, drinking that stuff."

Stuff—"Sall right, sall right; it won't show with my coat on."

\* \* \*

"Well here you are," said the doctor, "a tablet for indigestion, and another pill for the nerves."

"But look here, doctor," replied Griffith, "how will the little beggars know where to go when they get inside?"

N. H.—"But you know, beauty is only skin deep."

R. S.—"That's all right; I'm no cannibal."

\* \* \*

Bert Van D.—"Here, here, less fuss."

Sweet little thing in back of the room—"All right, let's do."

\* \* \*

B. B.—"Come on, Honey. Let's take a ride."

J. C.—"No, street cars make me sick."

\* \* \*

Our idea of the original optimist: The guy in the Ark who went fishing when there were only two worms aboard.

\* \* \*

Who is the Freshman who thought the bell hop was a Christmas dance?

\* \* \*

"Hell, yes," said the devil, as he answered the telephone.

\* \* \*

She—"I'm telling you for the last time, that you can't kiss me."

He—"Ah, I know you'd weaken eventually."

\* \* \*

Eve—"S'matter Adam? Why so restless?"

Adam—"Doggone it! I used poison ivy for my winter overcoat."

\* \* \*

John S.—"Who can I take to the dance Friday?"

Ernie J.—"Why not take the one you took to the last one?"

John S.—"Gee, no, I have to give the others a treat."

\* \* \*

Fat Seivers—"Porter, five dollars for another pitcher of ice water."

Porter—"Sorry, sah, but if I takes any mo' ice, dat corpse in de box car aint goin' to keep."



*With faces grim, with eyes grown dim,  
With fingers all crippled and sore,  
We write these lines, turn down our steins,  
And close the sanctum door.  
We've worked like mad for every ad  
From cannon balls to pills;  
We've done our best—God give us rest,  
And cash to pay our bills.*



### *Acknowledgments*

The steps which led to the publication of this volume of the Nesika, were many and varied and the final production places the editor and the business manager under sincere obligation to those who, by their faithful help and co-operation, have made this volume possible. We wish to thank those on the staff whose timely assistance has been of the greatest worth.

We do not, however, wish to overlook the printer and the engraver, for without their professional advice this volume would be far from successful. The Seattle Engraving Company has given us engravings of quality, and Kane and Hareus Printing Company has done exceptional work on this publication. Also, a great deal of credit is due to Vikdal Studio for the time and effort spent on the photographs for this book:

KATHRYN RAUSDAL  
WINSTON BROWN



NESIKA

adggrdnA



### Rogues' Gallery

for Faculty Members

Mary Frances Byers '23  
 J. H. McLanahan '29  
 Dorothy Dravin '22  
 Irma Polz  
 Catherine Croxton  
 Mrs. Newton.

next page





Autographs

Kathryn Popdalen  
 Dr. Joseph E. Weber  
 Hamilton & Henry  
 Gertrude M. Jensen  
 Helen Lee '27  
 Hazel Burdick '27  
 Gladys Erickson '27  
 Natalie Fisher (nan) '27  
 Nellie Hartman '26  
 Ellen Gurney '27 1/2  
 Kitty Zedner '27  
 Dorothy Brundy '24 1/2  
 Ethel Rasmussen '25  
 Berdie Rasmussen '27  
 Cecilia Nonemaker "Mickey" '27  
 Viola Woods (Vis) '27  
 Dorothy Pollock '27  
 Vera Davis -  
 Olga Schaller '27  
 Velma Davis '27



Autographs

Ethel Eddy '27  
 Catherine Y. Oskam  
 Alice Ziegler '27  
 Thana Garrison '27  
 Bernice Hokanson "Bernie"  
 Dagmar Hokanson '27  
 Dorothy Hokanson '25  
 Mildred Bluewinke  
 Betty Spunner '27  
 Mit  
 Everett Snydy  
 Lillie Carlson '29  
 Nellie Anderson '27  
 Lillian Hepler '27  
 Laila Taimonen '27  
 Dale Walker '27  
 Fred Nelson '27  
 Phyllis  
 Fannestuesman '27



Autographs

Vernard Backlund '27  
 Florence Bloom '27  
 Chester Soley (?)  
 B. Ormer Wilson '31  
 Martha Ambroges '27  
 Eugene Hammer '26 1/2  
 Grace Morgan "Dizzy Jim" - '26  
 Marie Downing '27  
 Edith Carlson "Buster" '27  
 Thekla Gunn '26  
 Melvin E. Auld (?)  
 Beatrice Woodward '26  
 Florence Weig '27  
 Bernadine Collins '27  
 Joan C. Cuthbert '27  
 Peggy Pullar '27  
 Edna Smythe '27 "Eplodes"  
 Betha Wickham  
 E. Ann Votto '27  
 Rose E. Baker "Immense" '27



Autographs

Otis Knorrison '28 1/2  
 Skimmed Robert  
 Asker Davis '27  
 Ruth Hinder '27  
 Beatrice Waples '27  
 Eugene Waples '27  
 June Donohue '27  
 Lucille Baker '27  
 Florence McDowell '27  
 Oscar Olsen '26 1/2  
 Waymen Offord '26  
 Olaf Johnson '26  
 Bob Organ '27  
 Charles Long '27  
 Gordon Salvorsen  
 Phil Don Lang '27  
 Betty Martland '27  
 Gladys Sanders "Happier" '27

Clavie Bendelmyer '28



Autographs

Kathryn Loftiss "let bits when  
do I graduate?"

Cecil Nashund - 27

Emma Nylund '27

Hortense Wyzman '27

Andrew Maincovid '28

William Robert Stuart

Harry Camp

Olma Youngberg "me" '28

Francis Hedger '28 "Beany"

Dick Buckley '28

Wilbur Johnson '28

Alce Jamison '28

Elbert Day '28

George Zelery '28

Doris Imus '28

Eloha Lindquist

Elsie L. Lyon '27

Margaret Nelson '27

Billy No. 10



Autographs

Beth Sims (Sapola) '28 (maybe)

Evan Wood '27

Gladys Johnson '27 "Bibi"

Kirsten Culmback '28

Kelvin Roman '28

Mabel Nyboe

Sophia Lufi '27 1/2