

County Platt Book.
1876 to ~~1877~~.

County Plat 1876-

*The following provisions of the Codes
make it the duty of Assessors to collect the
taxes on all movable personal property,
when such taxes are not a lien upon real
estate.*

SECTION 3820. The Assessor must collect the taxes
on movable personal property when
such taxes are not a lien upon real
property.

SECTION 3821. In the case provided for in the pre-
ceding section at the time of making
the assessment, or at any time before
the first Monday of July, the Assessor
may collect the taxes by seizure and
sale of any personal property owned
by the person against whom the tax
is assessed.



John C. Forrester 1500.

F. S. Bradburn 1550.

John Chadburne 730.

John Caperton 750.

John Caperton 1500.

Bacon

H. D. Bacon

H. D. Bacon 17,700 35-11.

Swampy Land Survey No. 1275

F. P. Whitney

part of Swampy Land Survey No. 1275

40,800 acres

Area of Survey 17,804 acres.

Wile Land Reclamation Company

Survey No. 1275 = 15,822.22

Meal Tulare



James 6
part of
about 76
about 632
2241 acres
477 = 242.41
Smiths
Smith
Weber
Chas
Mo.
Weber
James Crozier
part of 118 acres
\$5600.
part of 1299
part of 118 acres
\$5600.
part of 1299
part of 118 acres
\$5600.
part of 1299
part of 118 acres
\$5600.

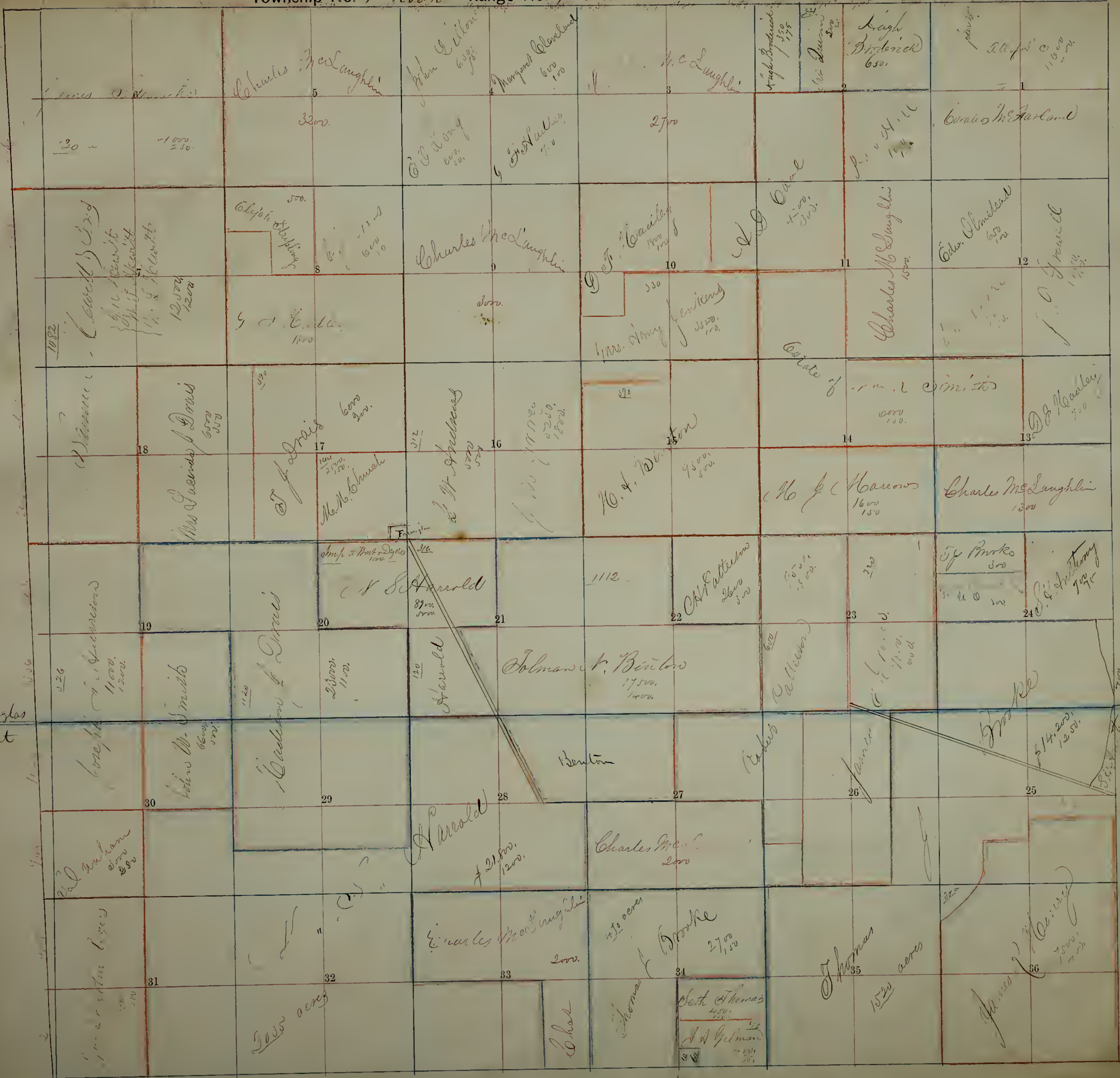
City of Stockton
10 11 12
13 14 15
16 17 18
19 20 21
22 23 24
25 26 27
28 29 30
31 32 33
34 35 36

Oreal
Julare

part of 1553 acres
Dec 1 5.6.6

Collegiate
on 1/14 1825 1.11.76





1 Charles McLaughlin 5
 2 Hugh B. ... 650
 3 H.C. Laughlin 2700
 4 ... 600
 5 ... 1100
 6 ... 1100
 7 ... 1100
 8 ... 1100
 9 Charles McLaughlin 500
 10 ... 1000
 11 Charles McLaughlin 1500
 12 ... 600
 13 ... 1100
 14 Estate of ... 1000
 15 ... 9500
 16 ... 1800
 17 ... 600
 18 Mrs. ... 600
 19 ... 1100
 20 ... 1100
 21 ... 1100
 22 ... 1100
 23 ... 1100
 24 ... 1100
 25 ... 1100
 26 ... 1100
 27 ... 1100
 28 ... 1100
 29 ... 1100
 30 ... 1100
 31 ... 1100
 32 ... 1100
 33 ... 1100
 34 ... 1100
 35 ... 1100
 36 ... 1100

Douglas Dent

Douglas Dent

126
125
124

10 acres



Oneal

oneal

640 = 234
part of 1894 acres
John E. Days

641 = 235
part of 1894 acres

647 = 211, 73

611 = 17, 11
J.B. Bigalow

600
G.L. Hastings

600
Sherman Day & Son

601 = 236
part of 1894 acres

602 = 237
part of 1894 acres

603 = 70, 10

605 = 58, 71
J.B. Bigalow

608 = 58, 58
A.A. Palmer

609 = 57, 70
part of 594 acres

604 = 238
part of 1894 acres

605 = 239
part of 1894 acres

606 = 110, 79

607 = 96, 08
G.L. Hastings

610 = 14, 70
500

611 = 17, 11
part of 594 acres

607 = 239
part of 1894 acres

608 = 240
part of 1894 acres

609 = 70, 10

610 = 58, 71
J.B. Bigalow

611 = 58, 58
A.A. Palmer

612 = 57, 70
part of 594 acres

608 = 240
part of 1894 acres

609 = 241
part of 1894 acres

610 = 110, 79

611 = 96, 08
G.L. Hastings

612 = 14, 70
500

613 = 17, 11
part of 594 acres

609 = 241
part of 1894 acres

610 = 242
part of 1894 acres

611 = 70, 10

612 = 58, 71
J.B. Bigalow

613 = 58, 58
A.A. Palmer

614 = 57, 70
part of 594 acres

610 = 242
part of 1894 acres

611 = 243
part of 1894 acres

612 = 110, 79

613 = 96, 08
G.L. Hastings

614 = 14, 70
500

615 = 17, 11
part of 594 acres

611 = 243
part of 1894 acres

612 = 244
part of 1894 acres

613 = 70, 10

614 = 58, 71
J.B. Bigalow

615 = 58, 58
A.A. Palmer

616 = 57, 70
part of 594 acres

612 = 244
part of 1894 acres

613 = 245
part of 1894 acres

614 = 110, 79

615 = 96, 08
G.L. Hastings

616 = 14, 70
500

617 = 17, 11
part of 594 acres

613 = 245
part of 1894 acres

614 = 246
part of 1894 acres

615 = 70, 10

616 = 58, 71
J.B. Bigalow

617 = 58, 58
A.A. Palmer

618 = 57, 70
part of 594 acres

614 = 246
part of 1894 acres

615 = 247
part of 1894 acres

616 = 110, 79

617 = 96, 08
G.L. Hastings

618 = 14, 70
500

619 = 17, 11
part of 594 acres

615 = 247
part of 1894 acres

616 = 248
part of 1894 acres

617 = 70, 10

618 = 58, 71
J.B. Bigalow

619 = 58, 58
A.A. Palmer

620 = 57, 70
part of 594 acres

616 = 248
part of 1894 acres

617 = 249
part of 1894 acres

618 = 110, 79

619 = 96, 08
G.L. Hastings

620 = 14, 70
500

621 = 17, 11
part of 594 acres

617 = 249
part of 1894 acres

618 = 250
part of 1894 acres

619 = 70, 10

620 = 58, 71
J.B. Bigalow

621 = 58, 58
A.A. Palmer

622 = 57, 70
part of 594 acres

618 = 250
part of 1894 acres

619 = 251
part of 1894 acres

620 = 110, 79

621 = 96, 08
G.L. Hastings

622 = 14, 70
500

623 = 17, 11
part of 594 acres

619 = 251
part of 1894 acres

620 = 252
part of 1894 acres

621 = 70, 10

622 = 58, 71
J.B. Bigalow

623 = 58, 58
A.A. Palmer

624 = 57, 70
part of 594 acres

620 = 252
part of 1894 acres

621 = 253
part of 1894 acres

622 = 110, 79

623 = 96, 08
G.L. Hastings

624 = 14, 70
500

625 = 17, 11
part of 594 acres

621 = 253
part of 1894 acres

622 = 254
part of 1894 acres

623 = 70, 10

624 = 58, 71
J.B. Bigalow

625 = 58, 58
A.A. Palmer

626 = 57, 70
part of 594 acres

622 = 254
part of 1894 acres

623 = 255
part of 1894 acres

624 = 110, 79

625 = 96, 08
G.L. Hastings

626 = 14, 70
500

627 = 17, 11
part of 594 acres

623 = 255
part of 1894 acres

624 = 256
part of 1894 acres

625 = 70, 10

626 = 58, 71
J.B. Bigalow

627 = 58, 58
A.A. Palmer

628 = 57, 70
part of 594 acres

624 = 256
part of 1894 acres

625 = 257
part of 1894 acres

626 = 110, 79

627 = 96, 08
G.L. Hastings

628 = 14, 70
500

629 = 17, 11
part of 594 acres

625 = 257
part of 1894 acres

626 = 258
part of 1894 acres

627 = 70, 10

628 = 58, 71
J.B. Bigalow

629 = 58, 58
A.A. Palmer

630 = 57, 70
part of 594 acres

626 = 258
part of 1894 acres

627 = 259
part of 1894 acres

628 = 110, 79

629 = 96, 08
G.L. Hastings

630 = 14, 70
500

631 = 17, 11
part of 594 acres

627 = 259
part of 1894 acres

628 = 260
part of 1894 acres

629 = 70, 10

630 = 58, 71
J.B. Bigalow

631 = 58, 58
A.A. Palmer

632 = 57, 70
part of 594 acres

628 = 260
part of 1894 acres

629 = 261
part of 1894 acres

630 = 110, 79

631 = 96, 08
G.L. Hastings

632 = 14, 70
500

633 = 17, 11
part of 594 acres



Part of Survey No 1265

Side Sand Reclamation Co.
8805 a

Side Sand Rec. Co.
81000

Side Sand Rec. Co.
17257

Harris & Leonard
812

Harris & Leonard
864 acres 4000.

Swamp Land District No. 60. - Area 4653 1/2 acres

OS 6 Hastings

part of 4653 1/2 acres

11,600.

Swamp Land Survey No. 1276 = 3907
John S. Wagner & John Doolan
17300.

Jacob Wagner
2000

429 acres

part of 772 a
5000

Harris & Leonard
43200

Magnum

part of 656
to Swamp Land
5000

429 = 2700 1/2

J. A. Kostwick
670.

part of 688 = 627

J. A. Kostwick
1550

580 = 441

J. A. Kostwick
1100.

2317 acres

Owner
765 = 1870

765 = 2872 1/2

3000

part of 1217

Wagner & Doolan
1900.

Meal

J. A. Kostwick
part of 7081

J. A. Kostwick
750.

Chickens

1206 acres

Kingston

Part of Swamp Land Survey No. 1266 Area 4610 1/2 acres

Swamp

part of 7985 acres

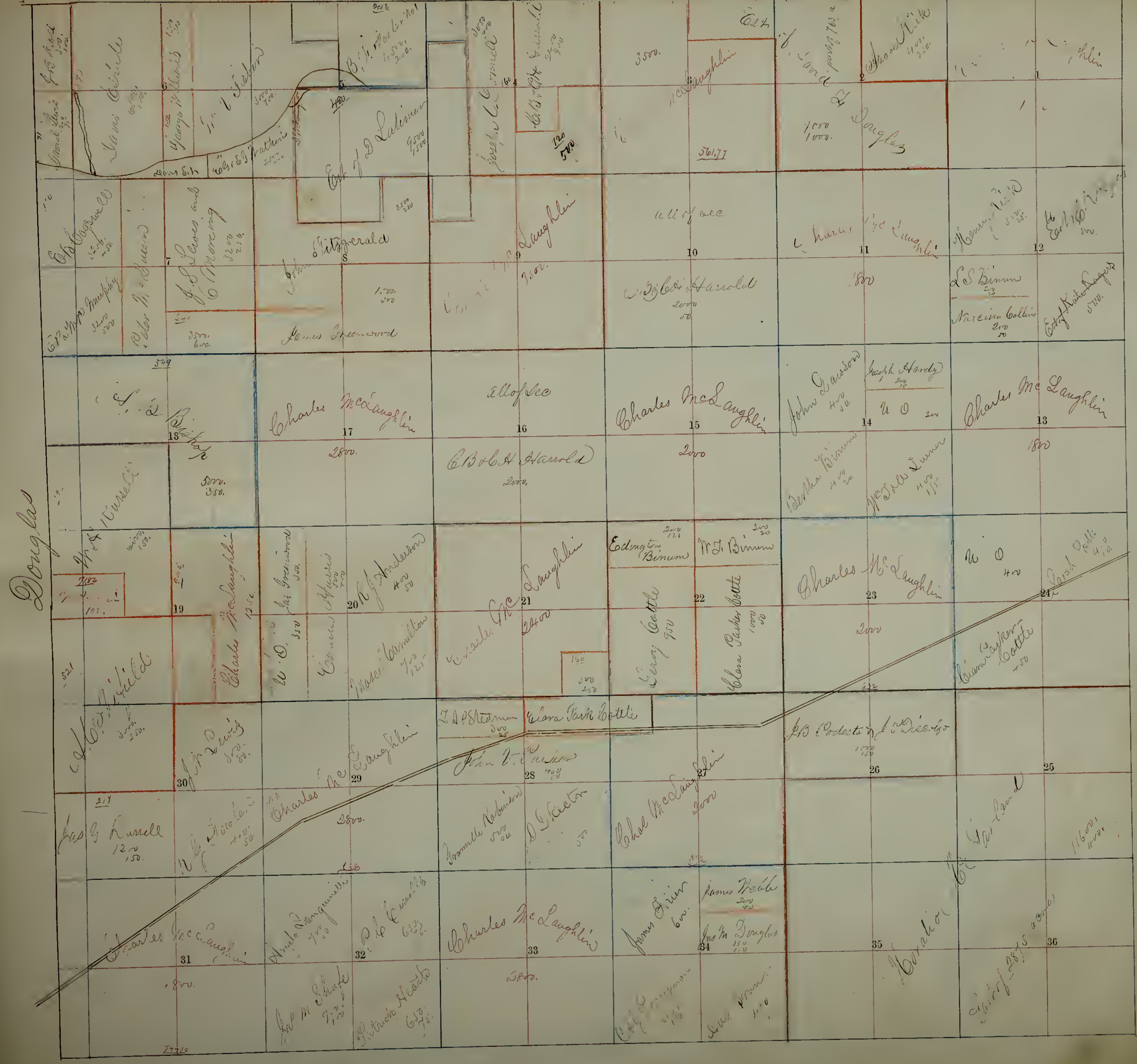
part of 17400

10 miles long

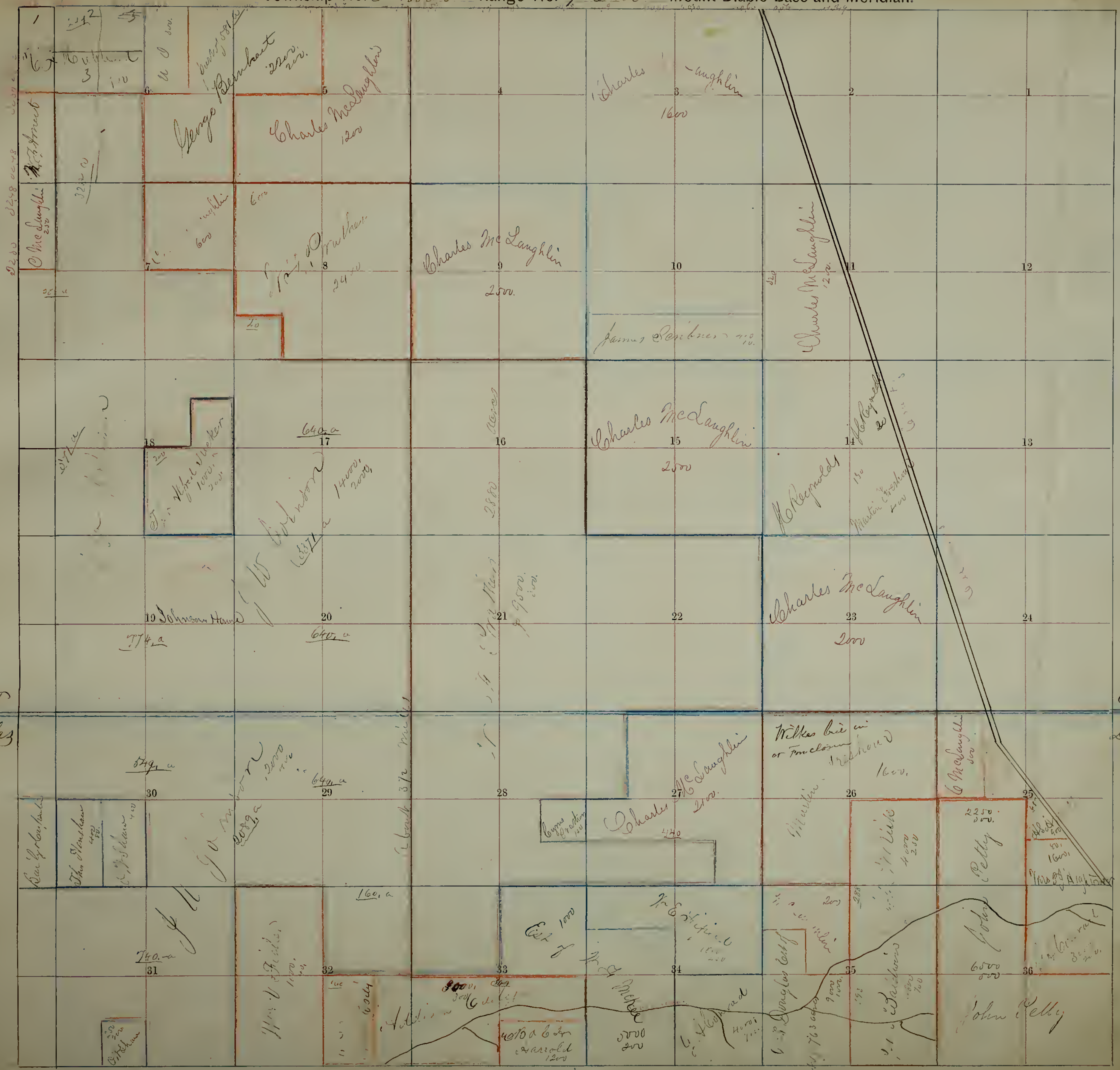
Elk

Survey of 1870

part of 10000



Douglas



2200
2200
2200

Elliott
Douglas

Elliott
Douglas

1
12
3
100
100
100

McLaughlin
200
3200
100

200
100

18
200
1000
2000

19 Johnson Hand
774 a

20
640 a

30
549 a

31
740 a

200
200
200

George Reinhart
2200
200

600
600

2400

640 a
17

14000
2000

20
640 a

29
640 a

160 a

1000
1000

Charles McLaughlin
1200

600

2500

2800

9500
1000

21
9500
1000

28
440

1000

5000
200

Charles McLaughlin
1600

1200

2000

2000

2000

23
2000

26
1600

25
2250
250

6000
200

Charles McLaughlin
2500

2500

2500

2500

2500

22
2000

27
2000

34
1000

5000
200

Charles McLaughlin
1600

1600

2500

2500

2500

22
2000

27
2000

34
1000

5000
200

Charles McLaughlin
1200

1200

1200

1200

1200

23
2000

26
1600

25
2250
250

6000
200

Charles McLaughlin
1200

1200

1200

1200

1200

23
2000

26
1600

25
2250
250

6000
200

Charles McLaughlin
1200

1200

1200

1200

1200

23
2000

26
1600

25
2250
250

6000
200

Charles McLaughlin
1200

1200

1200

1200

1200

23
2000

26
1600

25
2250
250

6000
200

Charles McLaughlin
1200

1200

1200

1200

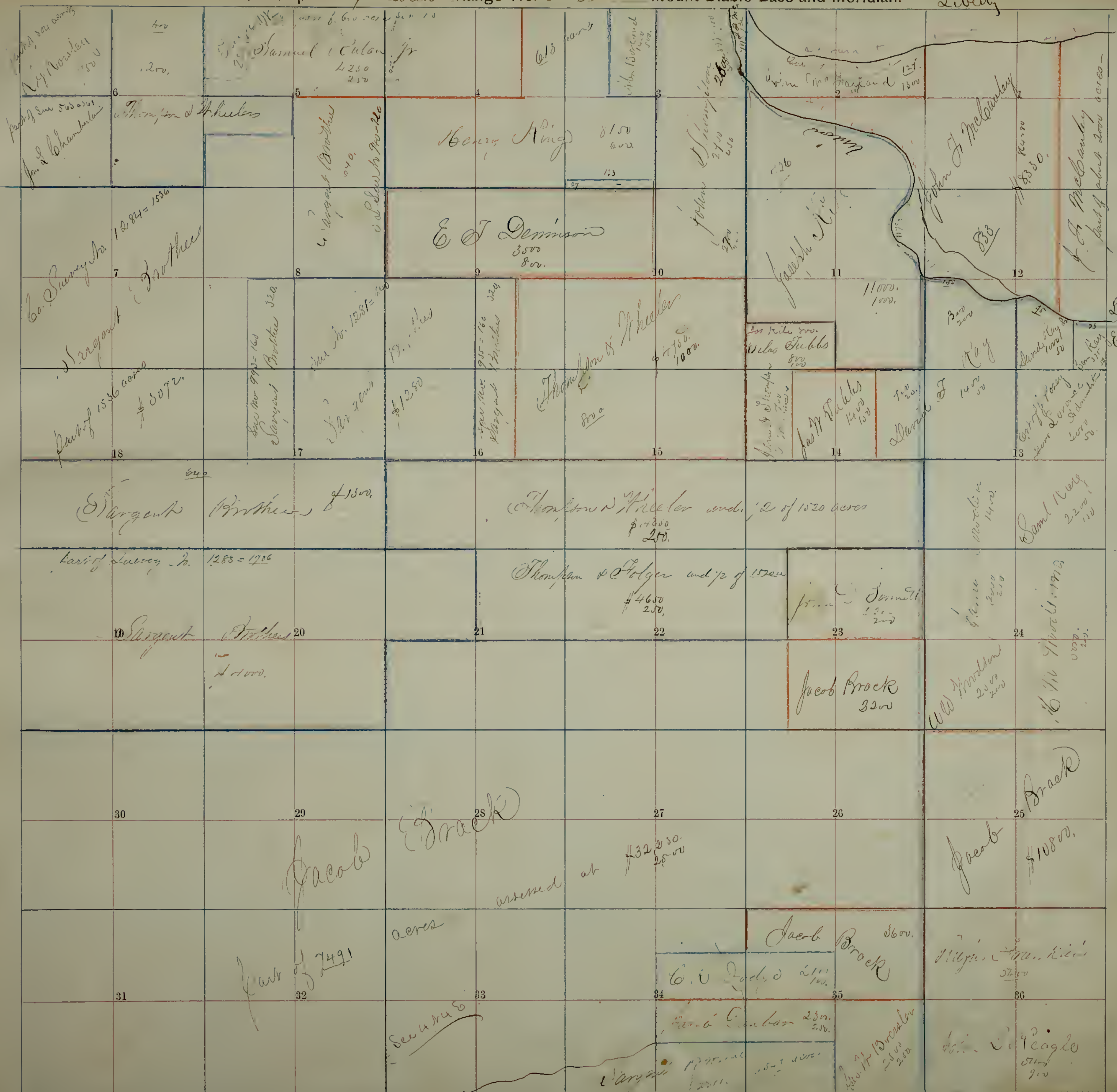
1200

23
2000

26
1600

25
2250
250

6000
200



Union
Elkhorn

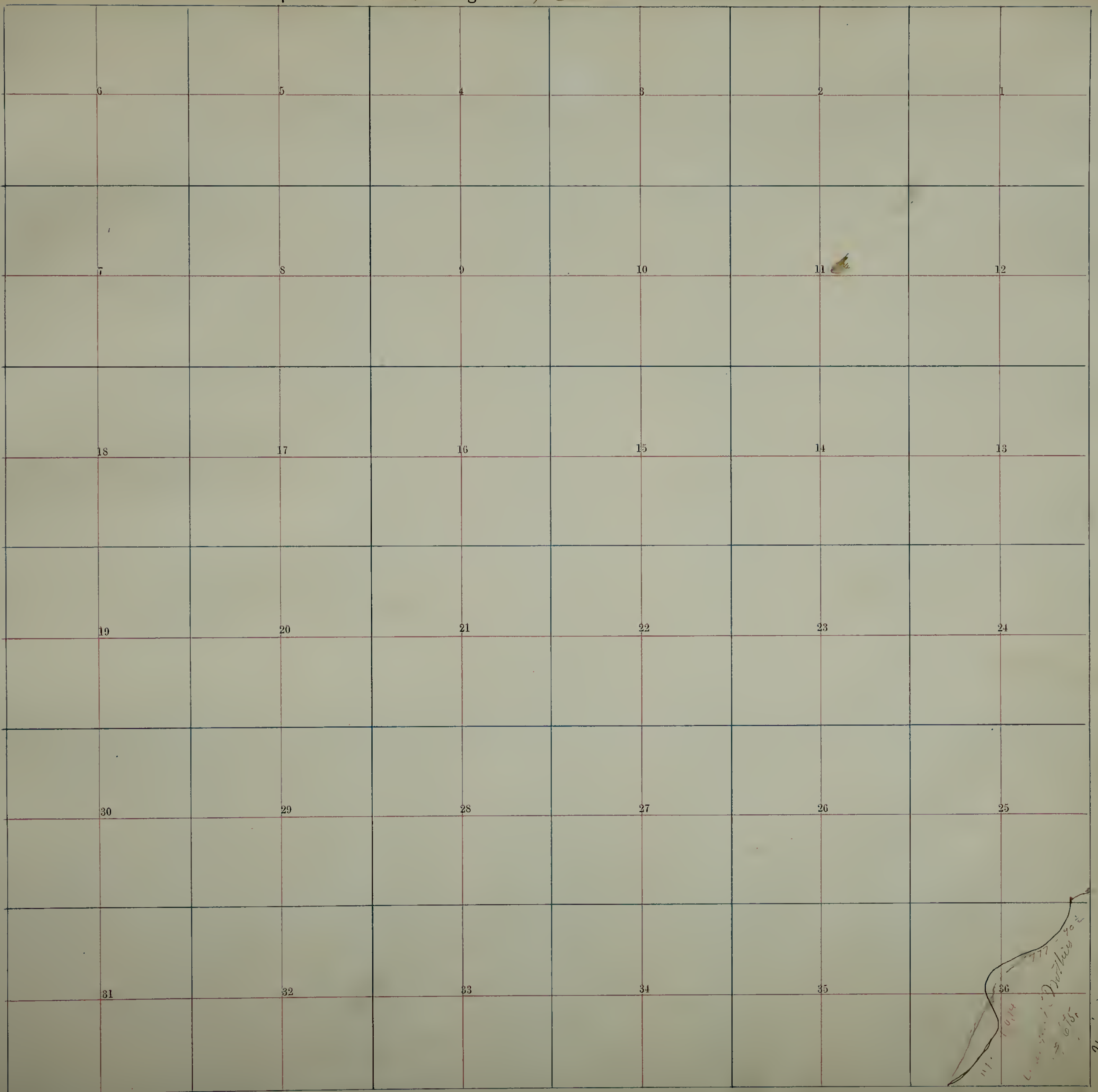
Elliott



Elliott

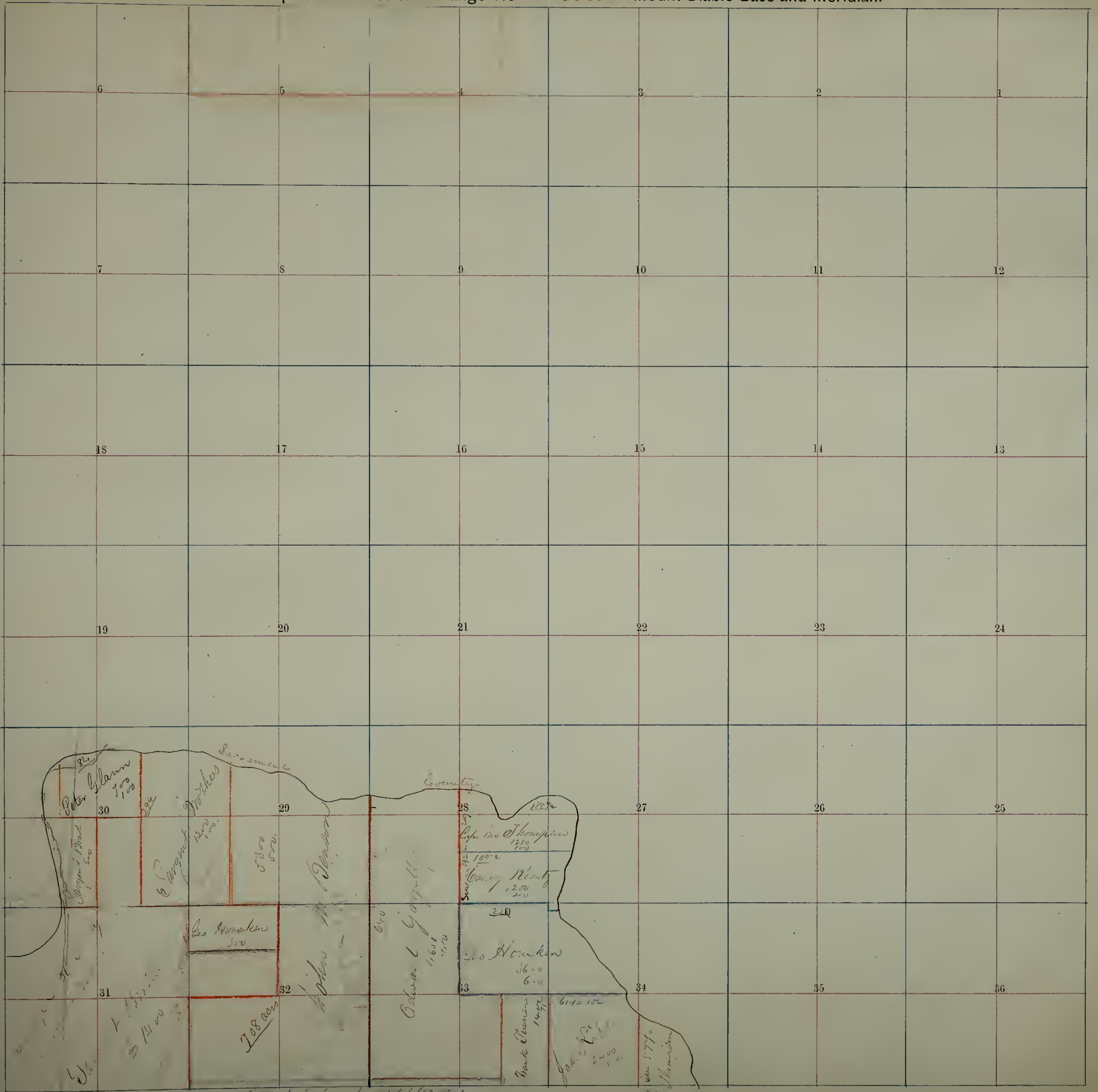


Township No. 5 North Range No. 4 East Mount Diablo Base and Meridian.



111.
10,114
L. ...
D. ...
1876

Union



Peter Glenn
500
100

S. Vincent
1000
1000

5000
5000

John M. Benson

Edward G. Gault
640
11600
1170

Howken
3600
600

Marie Duncan
1400

614 = 150
1200
100

1000
577 =
1000

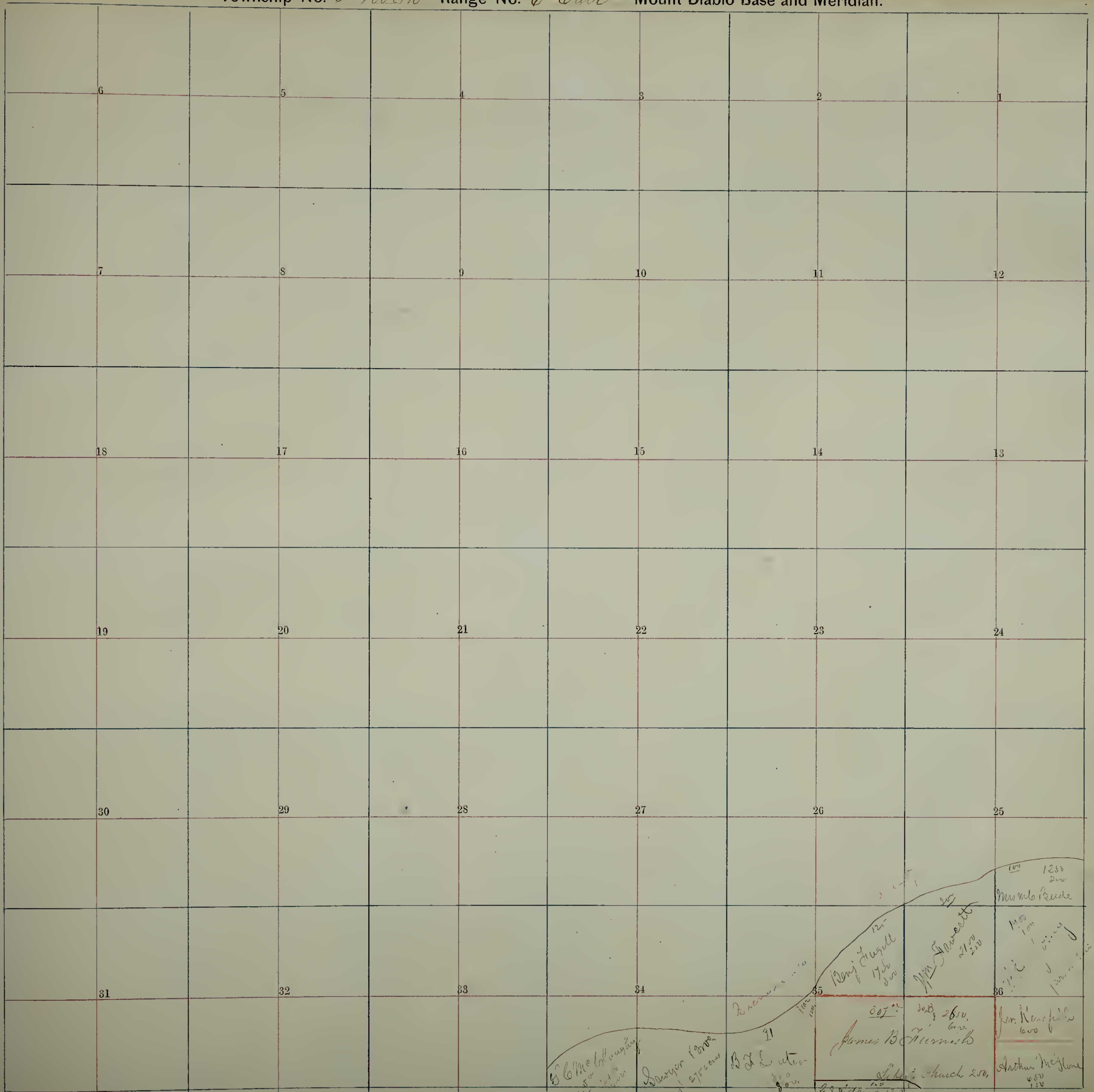
208 acres

Union

1000

1000

Township No. 5 North Range No. 6 West Mount Diablo Base and Meridian.



B. C. McLaughlin
 Dawson 10000
 B. L. Linton
 James B. Merrill
 Arthur McShane
 Mrs. M. B. Reed
 Mrs. Stewart
 Liberty



Oliver

6
7
18
19
30
31

5
8
17
20
29
31

4
9
16
21
28
33

3
10
15
22
27
34

2
11
14
23
26
35

1
12
13
24
25
36

W. J. (long)

Frank Allen
41.00
5.00

Simon's Road
320 acres
96.50
10.00

J. J. Crabtree
43.00
6.00

Wm. McLaughlin
6.00

Wm. McLaughlin
22.00
8.00

David McPetersen
25.00
5.00

Charles McLaughlin
12.00

James Morrison
45.00
25.00

St. Paul
11.00

W. B. Williams
45.00
15.00

Charles McLaughlin

J. D. Liffle
14.00

Chas. McLaughlin
14.00

W. L. Campbell
13.00

James W. Barton
38.00
15.00

Charles McLaughlin
25.00

Wm. McLaughlin
17.00
5.00

Wm. McLaughlin
50.00
20.00

Charles McLaughlin
16.00

Wm. McLaughlin
15.00

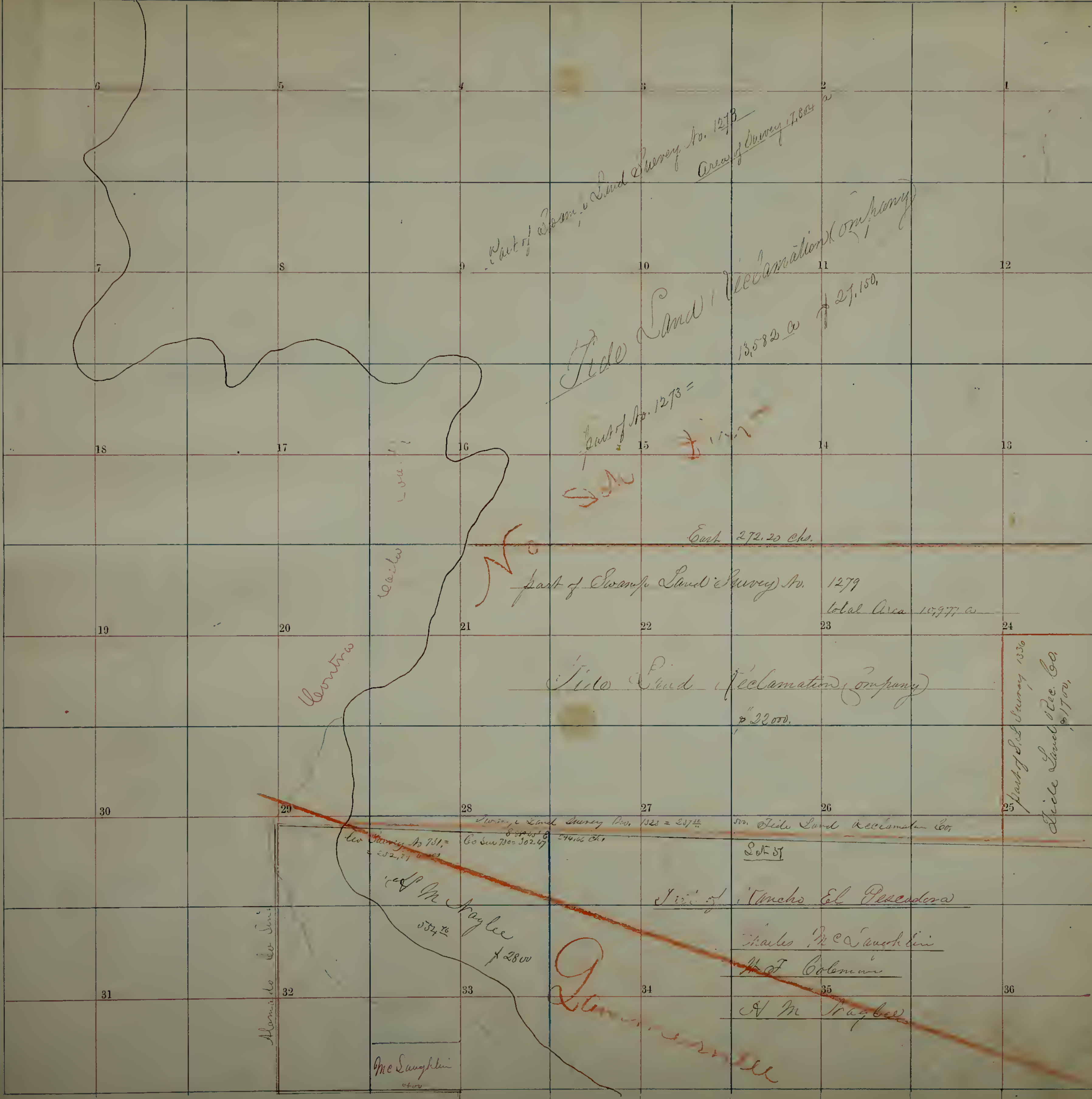
Wm. McLaughlin
15.00

Wm. McLaughlin
6.00
2.00

Wm. McLaughlin
6.00
2.00

Wm. McLaughlin
11.00

Wm. McLaughlin
11.00



Part of Swamp Land Survey No. 1273
Area of Survey 7,804 a

Tide Land Reclamation Company
13,582 a + 27,150

Part of No. 1273 =

East 272.20 chs.

part of Swamp Land Survey No. 1279
total Area 10,977 a

Tide Land Reclamation Company
\$22,000.

part of Swamp Survey 1336
Tide Land Rec. Co.
\$1700.

Swamp Land Survey No. 1323 = 207^{1/2}
Co. Survey No. 30247 249.00 chs.

part of Tide Land Reclamation Co.
S of S

Part of Rancho El Pescadero

Charles McLaughlin
H of Coleman

A M Nagler

Leontina

Walter

Alameda Co. Survey

part of Survey No. 751 =
252.77
A M Nagler
537^{1/2}
\$2800

McLaughlin
4000

Tulare

9
L... ..



Tulare

Gardens

Tulare
Cantoria

H. S. Moss

Central Pacific R.R.

Cantoria

10

12

13

H. S. Moss
Part of

Survey No 2800 = 1561.67
in 2855
Sold as 2855
Add 2855
1498.52
\$29.00
2500
W. S. Moss

Central P.R.R.

Patrol property

3

11

28

27

26

25

19

20

21

22

23

24

18

17

16

15

14

13

7

8

5

0

11

12

6

12

4

3

2

1

1020

492000

122

100

100

100

100

100

100

100

100

100

100

100

100

100

100

100

100

100

100

100

100

100

100

100

100

100

100

1020

492000

122

100

100

100

100

100

100

100

100

100

100

100

100

100

100

100

100

100

100

100

100

100

100

100

100

100

1020

492000

122

100

100

100

100

100

100

100

100

100

100

100

100

100

100

100

100

100

100

100

100

100

100

100

100

100

1020

492000

122

100

100

100

100

100

100

100

100

100

100

100

100

100

100

100

100

100

100

100

100

100

100

100

100

100

1020

492000

122

100

100

100

100

100

100

100

100

100

100

100

100

100

100

100

100

100

100

100

100

100

100

100

100

100

1020

492000

122

100

100

100

100

100

100

100

100

100

100

100

100

100

100

100

100

100

100

100

100

100

100

100

100

100

1020

492000

122

100

100

100

100

100

100

100

100

100

100

100

100

100

100

100

100

100

100

100

100

100

100

100

100

100

1020

492000

122

100

100

100

100

100

100

100

100

100

100

100

100

100

100

100

100

100

100

100

100

100

100

100

100

100

1020

492000

122

100

100

100

100

100

100

100

100

100

100

100

100

100

100

100

100

100

100

100

100

100

100

100

100

100

1020

492000

122

100

100

100

100

100

100

100

100

100

100

100

100

100

100

100

100

100

100

100

100

100

100

100

100

100

1020

492000

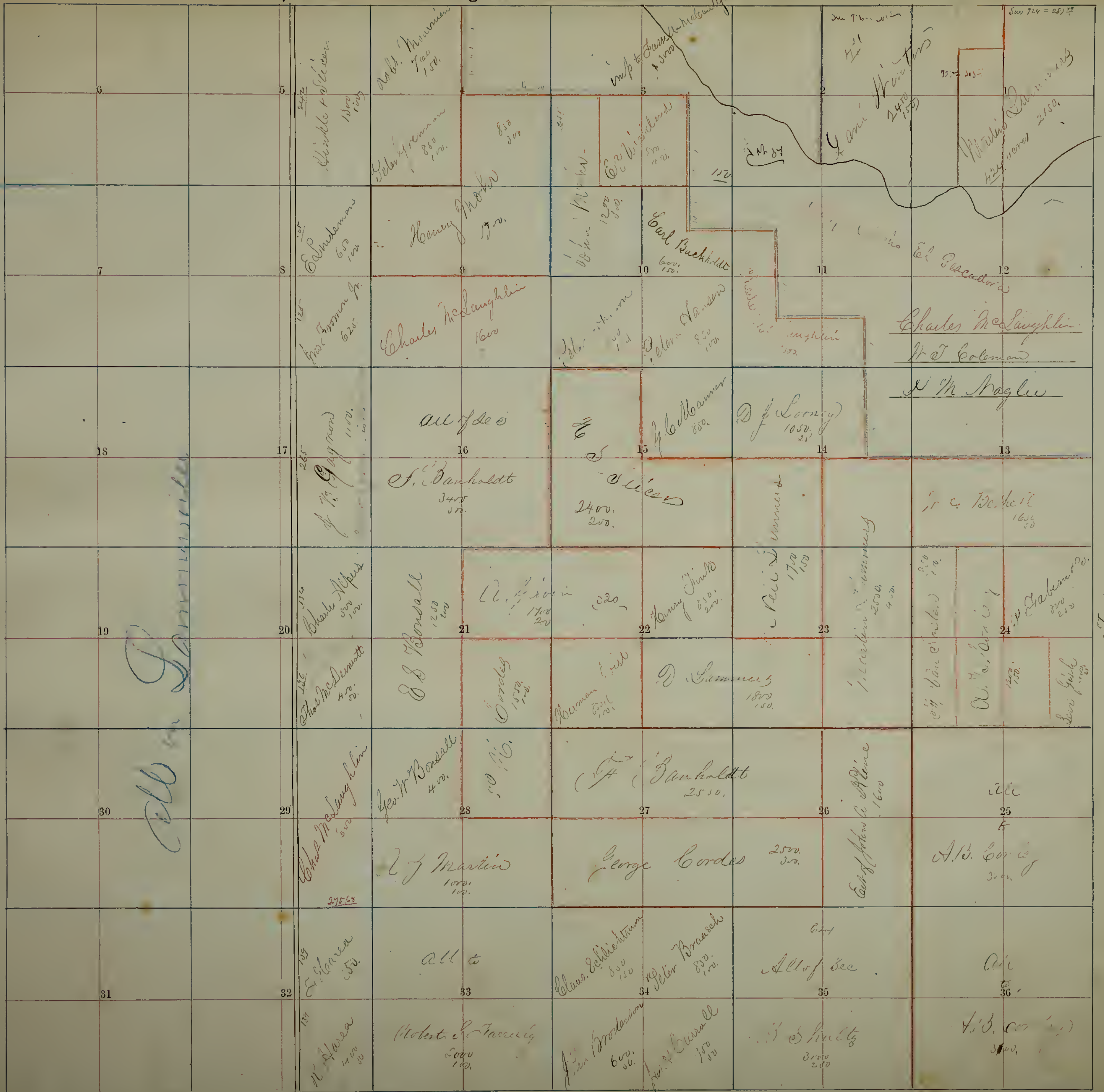
122

100

100

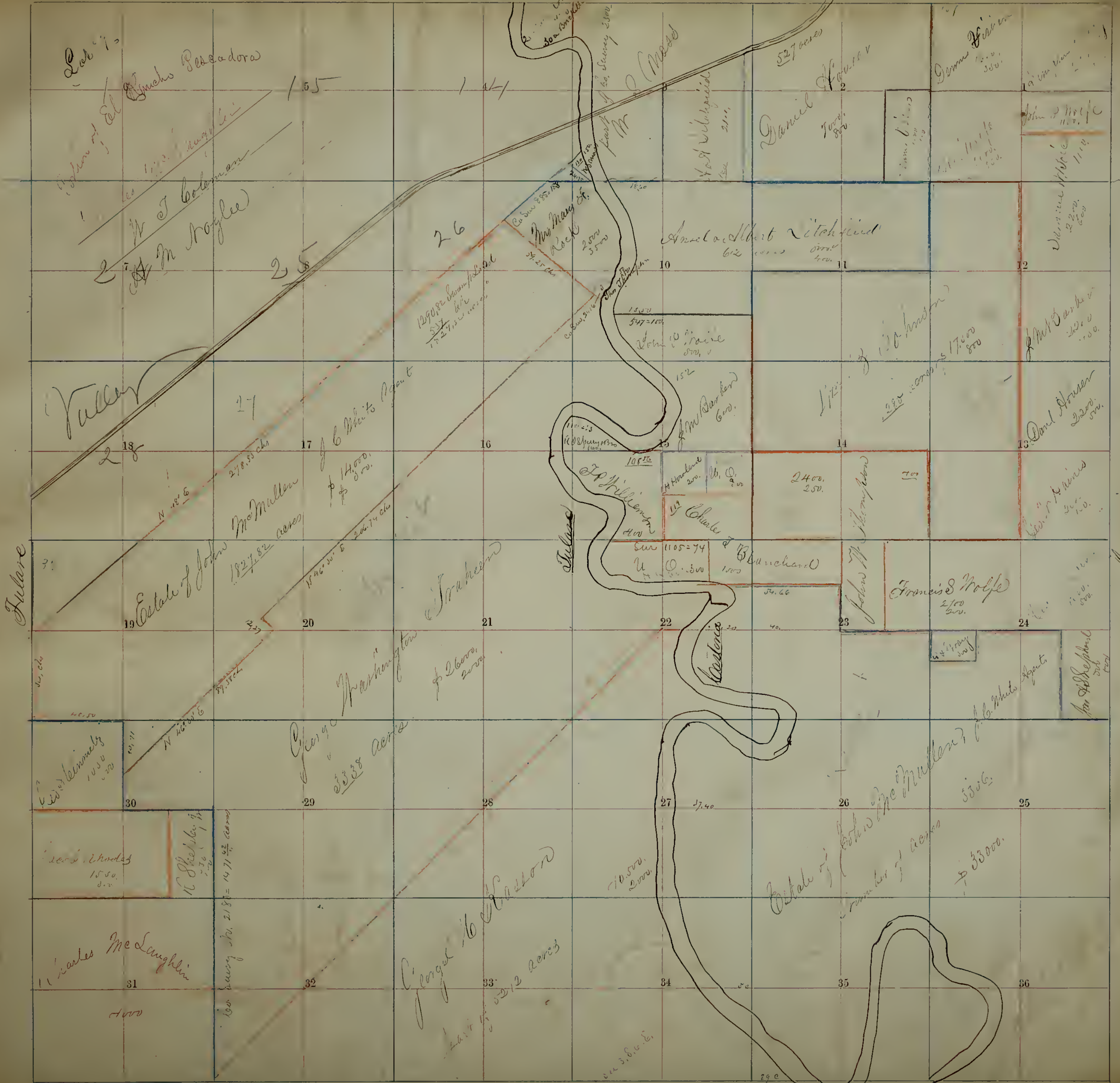
100

100



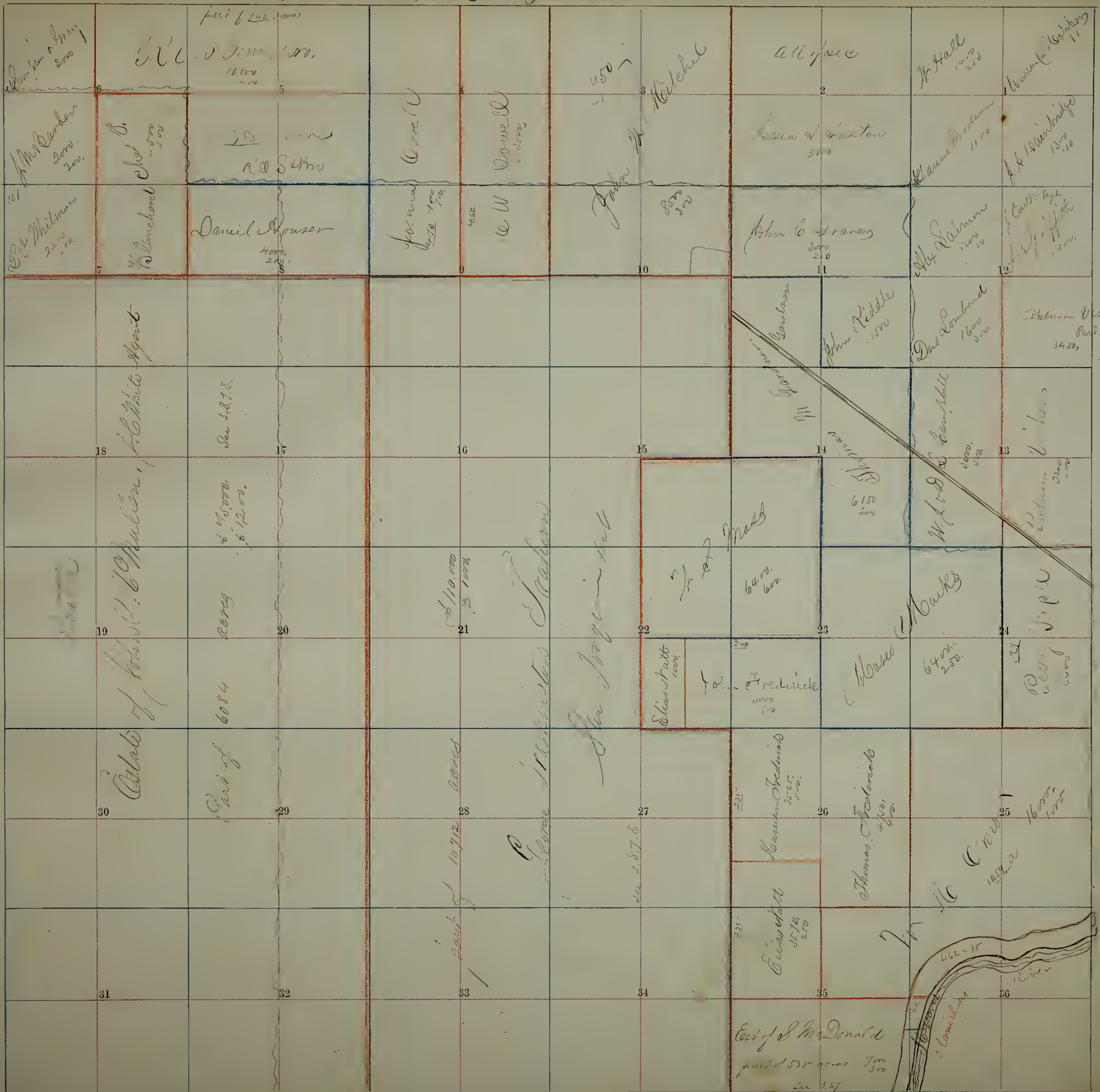
Old San Joaquin

Julard



Castroca

Castro





St. Lawrence

Garland

W. W. Willis
1000
2000

James Lively
1000
1000

all of Sec.

J. W. Bond
1050
800

W. A. ...
1000
1000

Ellis Houston & Sanderson
1200

1000
2000

1000
2000

1000
2000

1000
2000

1000
2000

1000
2000

1000
2000

1000
2000

1000
2000

1000
2000

1000
2000

1000
2000

1000
2000

1000
2000

1000
2000

1000
2000

1000
2000

1000
2000

1000
2000

1000
2000

1000
2000

1000
2000

1000
2000

1000
2000

1000
2000

1000
2000

1000
2000

1000
2000

1000
2000

1000
2000

1000
2000

1000
2000

1000
2000

1000
2000

1000
2000

1000
2000

1000
2000

1000
2000

1000
2000

1000
2000

1000
2000

1000
2000

1000
2000

1000
2000

1000
2000

1000
2000

1000
2000

1000
2000

1000
2000

1000
2000

1000
2000

1000
2000

1000
2000

1000
2000

1000
2000

1000
2000

1000
2000

1000
2000

1000
2000

1000
2000

1000
2000

1000
2000

1000
2000

1000
2000

1000
2000

1000
2000

1000
2000

1000
2000

1000
2000

1000
2000

1000
2000

1000
2000

1000
2000

1000
2000

1000
2000

1000
2000

1000
2000

1000
2000

1000
2000

1000
2000

1000
2000

1000
2000

1000
2000

1000
2000

1000
2000

1000
2000

1000
2000

1000
2000

1000
2000

1000
2000

1000
2000

1000
2000

1000
2000

1000
2000

1000
2000

1000
2000

1000
2000

1000
2000

1000
2000

1000
2000

1000
2000

1000
2000

1000
2000

1000
2000

1000
2000

1000
2000

1000
2000

1000
2000

1000
2000

1000
2000

1000
2000

1000
2000

1000
2000

1000
2000

1000
2000

1000
2000

1000
2000

1000
2000

300
0.2
on part of...

City of John McMillan
part of 61184 acres
Sec 2878

609
Optim Middle
665 acres
part of
660
48.70
447-5376
part of
461-95
Medonala
part of
460-7167
Adenhill

George Washington Graham
part of 107122 acres of 110,000
Sec 2516

840 = 52,200
part of
W. Graham

part of
Middle
430
42.83
1271 = 107,400

part of
Middle

part of
Graham
2774
853
part of
Stam
1957-74
W.S.

R.O. Spang

Custom'd



