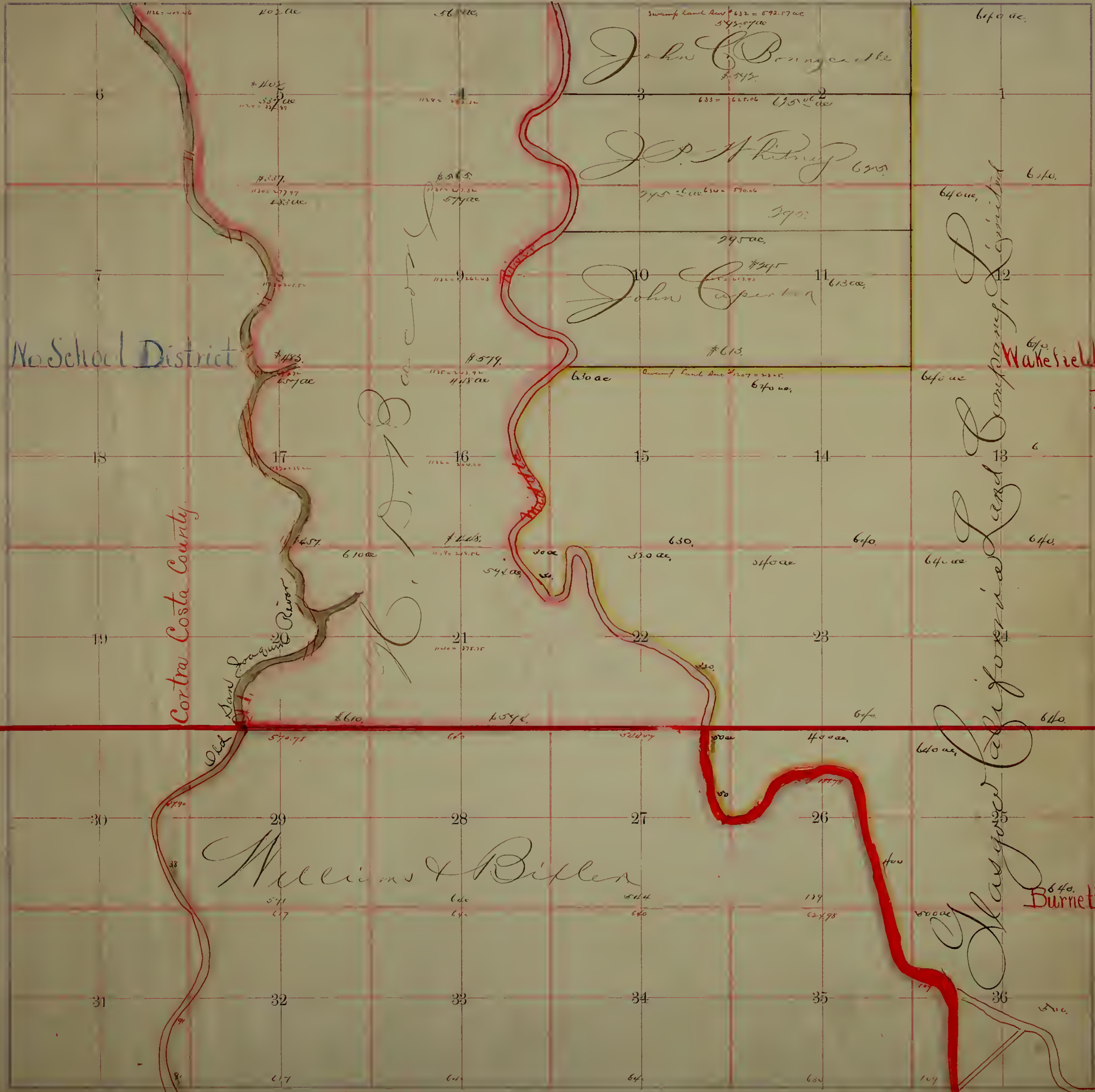




1966.v.356.213





No School District

Costa County

San Joaquin River

California Land Company, Limited

Wakfield Road District

Burnett Road District

Tule Road District



Township No. 1 North

Range No. 5 East,

Mount Diablo Base and Meridian.



Glasgow School District

Wakelield Road District

Wakelield Road District

Burnett Road District

Tile Road District  
Island School District





J.C. Smith

Helen Weber

W.B. Daggett

North School District

City of Stockton

South School District

Homestead Road District

J.M. McDougald

J. Weber Frank

French Camp Road District

French Camp School District

M.A. Johnson

Ira Saunders

D. Stewart et al.

Wrightman Road District

Waterloo No. 2 Rd. Dist.

Time Dredging South of Weber

J.B. Bigelow

Argonaut Land & Development Co

Sam Bates et al

R.D. Marnette

Dr. E.W. Woods

P. R. Kender et al

John Hale

J.M. McDougald

Est. H. S. Mussey

Est. Anna W. Jack

J. Mearns

C.B. Lowland et al

J. Mearns

Julius Burnett

John O'Brien

Wm. A. Duggan

W. B. Daggett

W. B. Daggett

Independent District

Field District

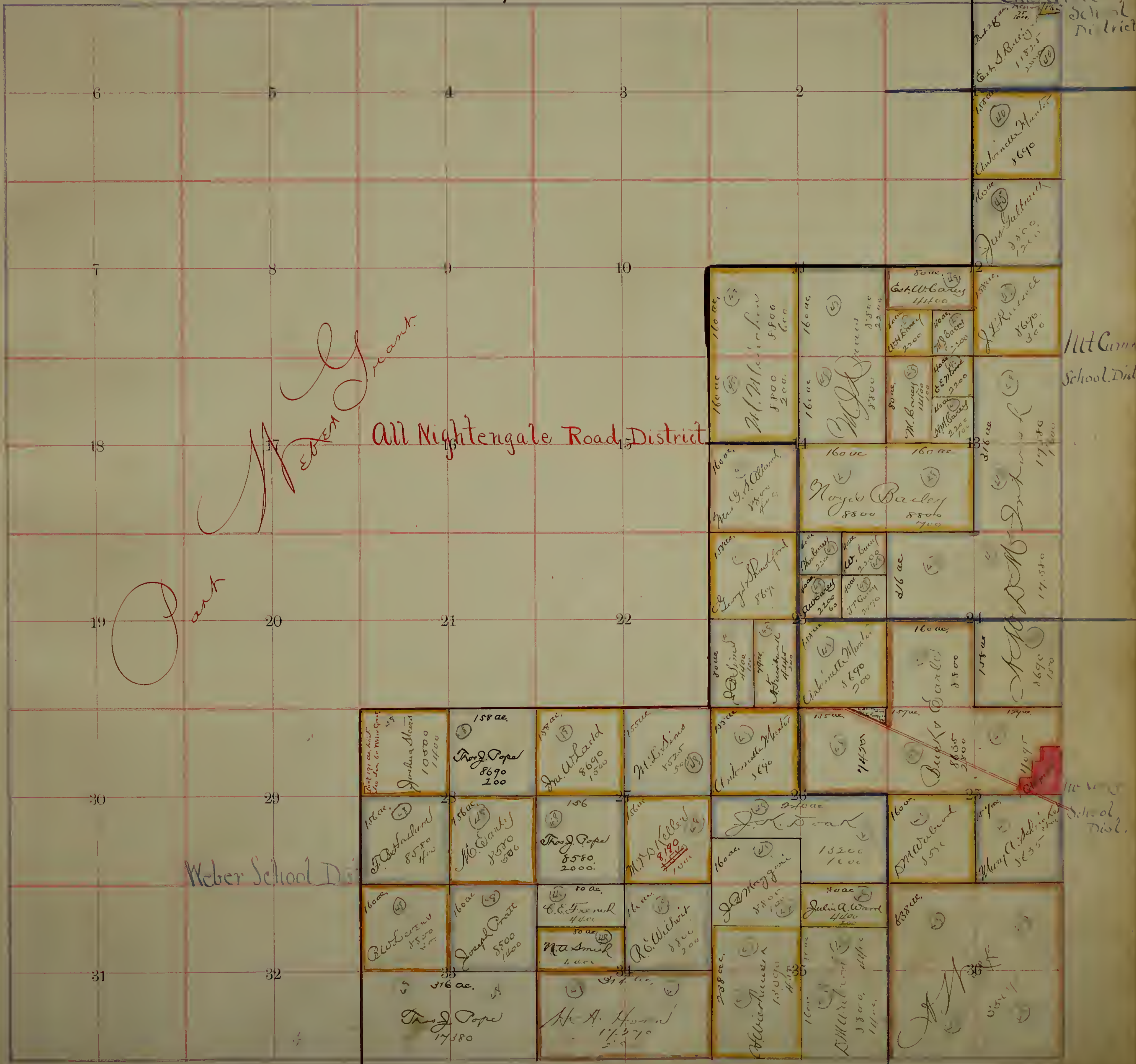
Child District

mett District

West Line



Chillicothe School District



Est. S. Bailey 11525

Antoinette Munter 8690

John Galtbank 8690

Est. W. Carey 11400

J. L. Russell 8690

W. L. S. S. S. 17380

W. L. S. S. S. 17380

W. L. S. S. S. 8690

W. L. S. S. S. 11095

W. L. S. S. S. 5635

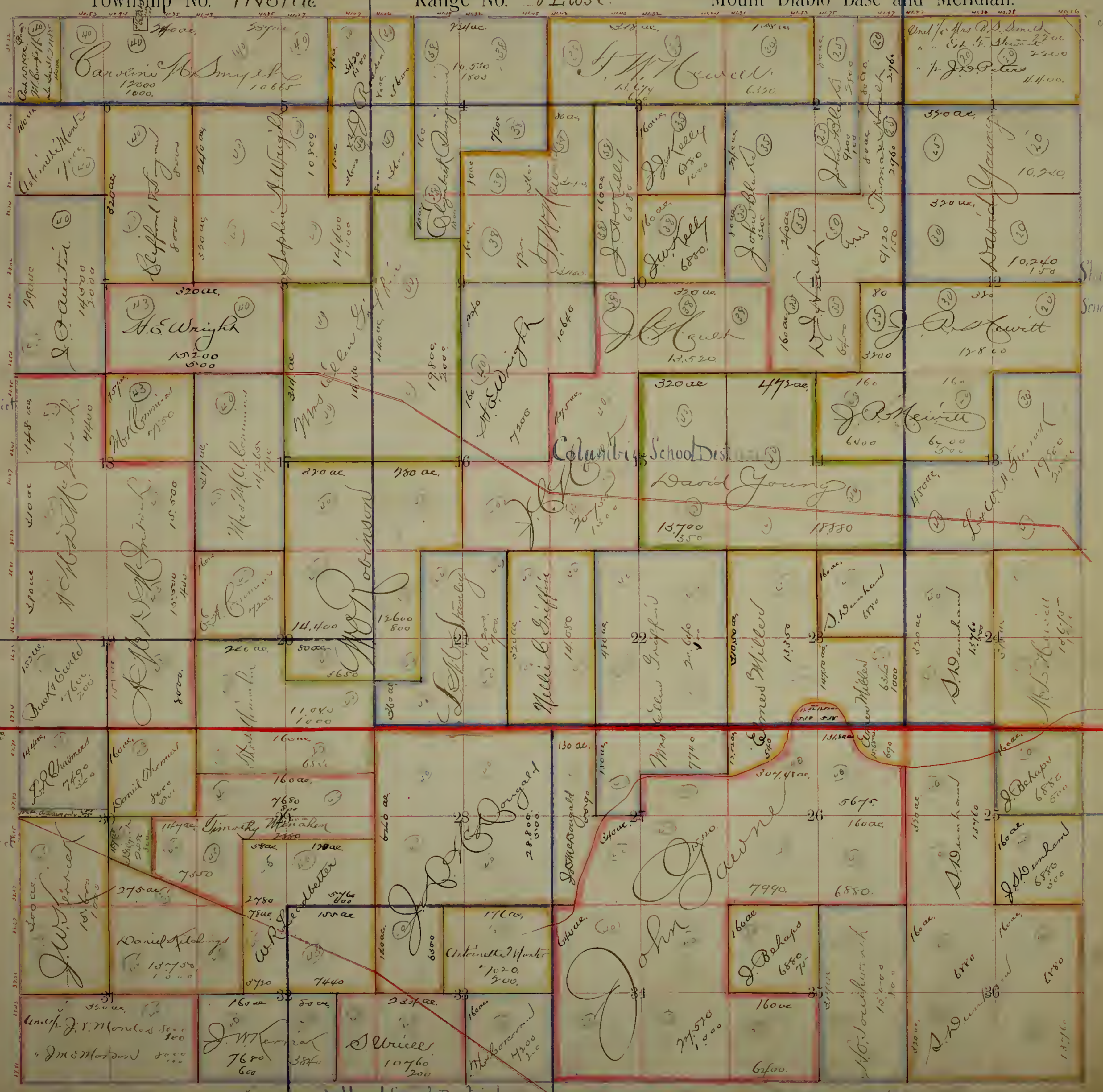
W. L. S. S. S. 5635

W. L. S. S. S. 5635



Amherst School District  
Farmington Road District  
Everett School District  
Fairview School District

Shady Grove School District



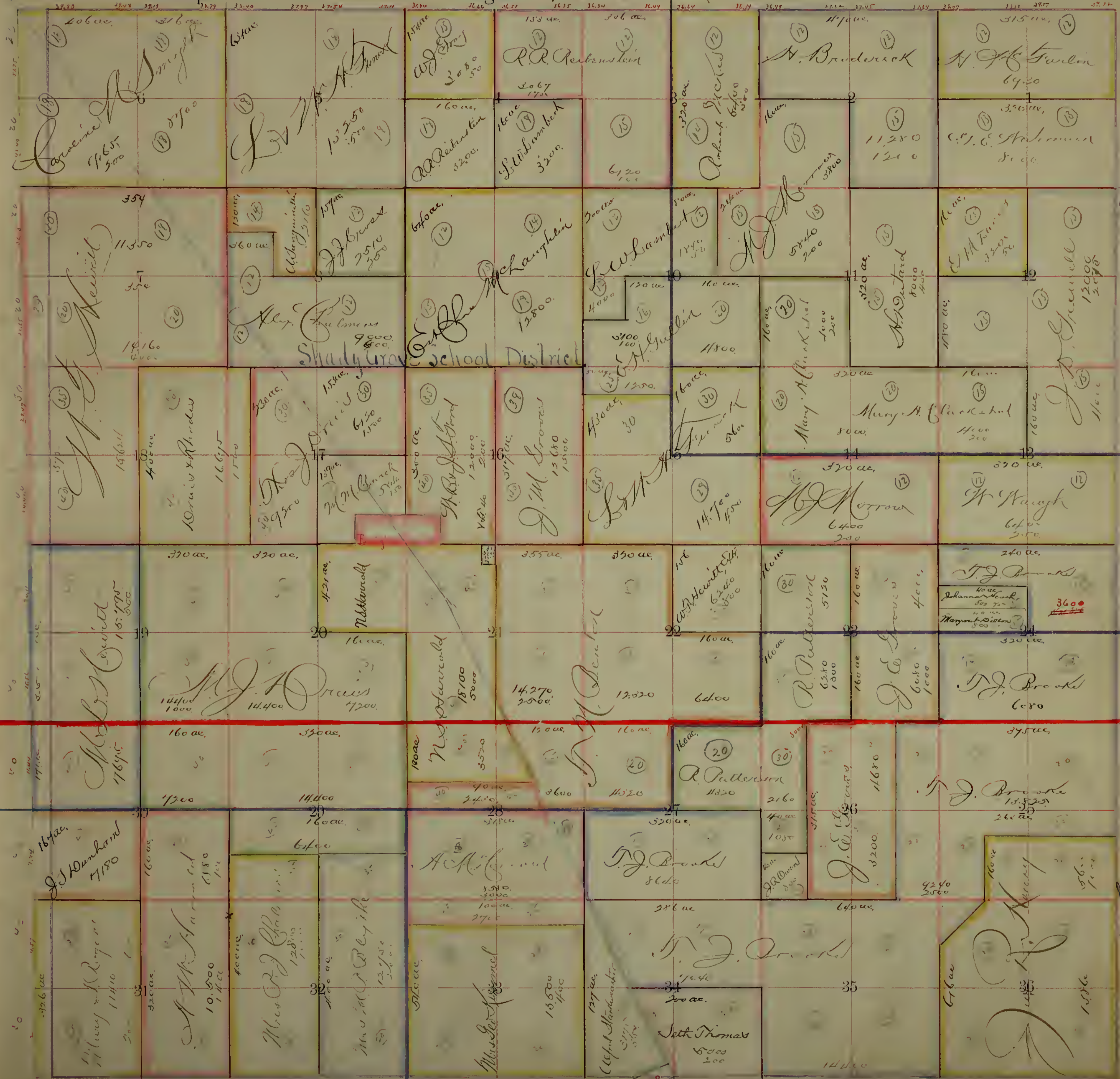


Farmington Road District.

Township No. 1 North

Range No. 9 East.

Mount Diablo Base and Meridian.



Home School Dist

Fairview School District.

Kerrick Road District.

W. Hill School Dist





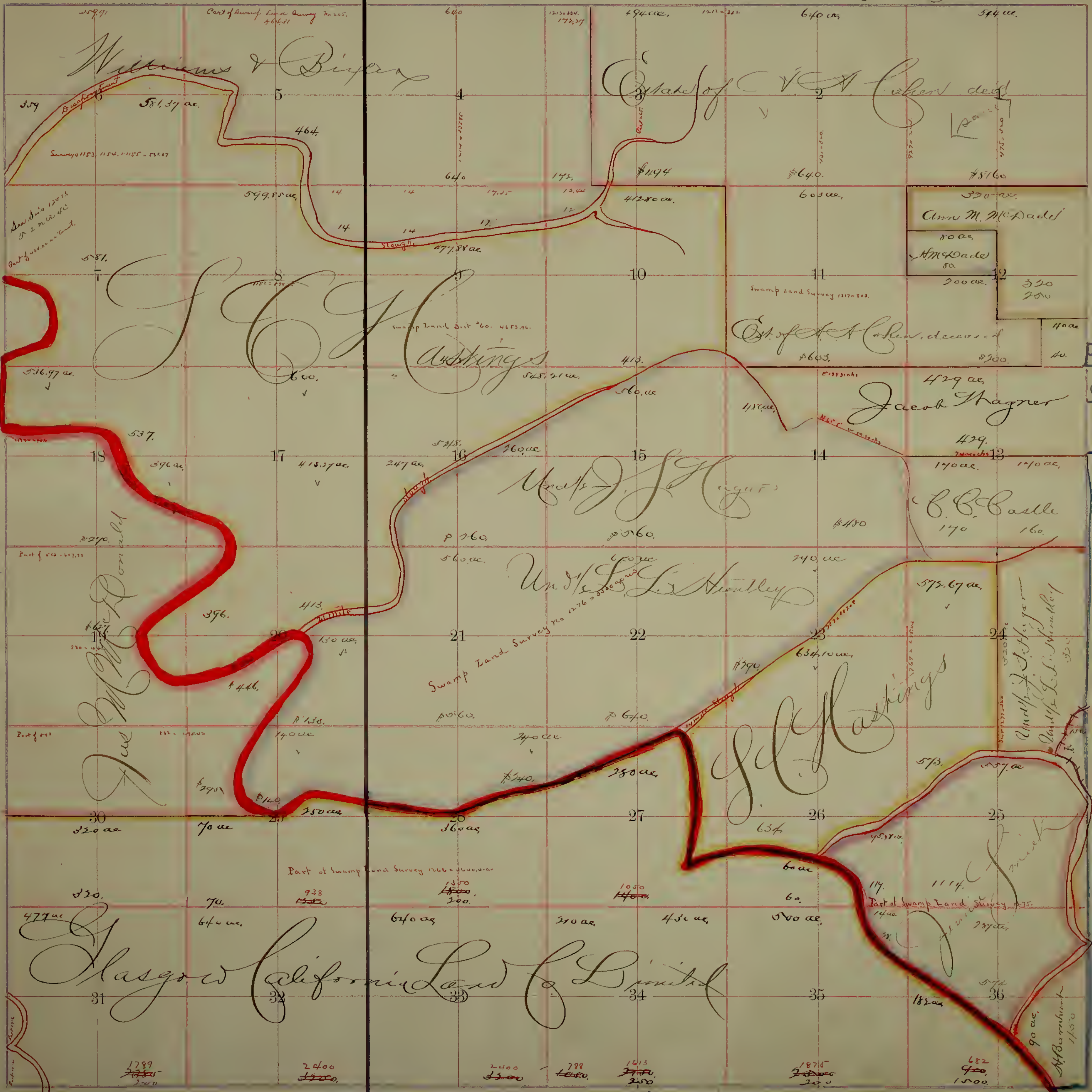


# Wrightman Road District.

Township No. 2 North

Range No. 5 East.

Mount Diablo Base and Meridian.



Bar  
ool Dist

Elkhorn  
School Dist

Wakefield Road District.

Kingston School District.

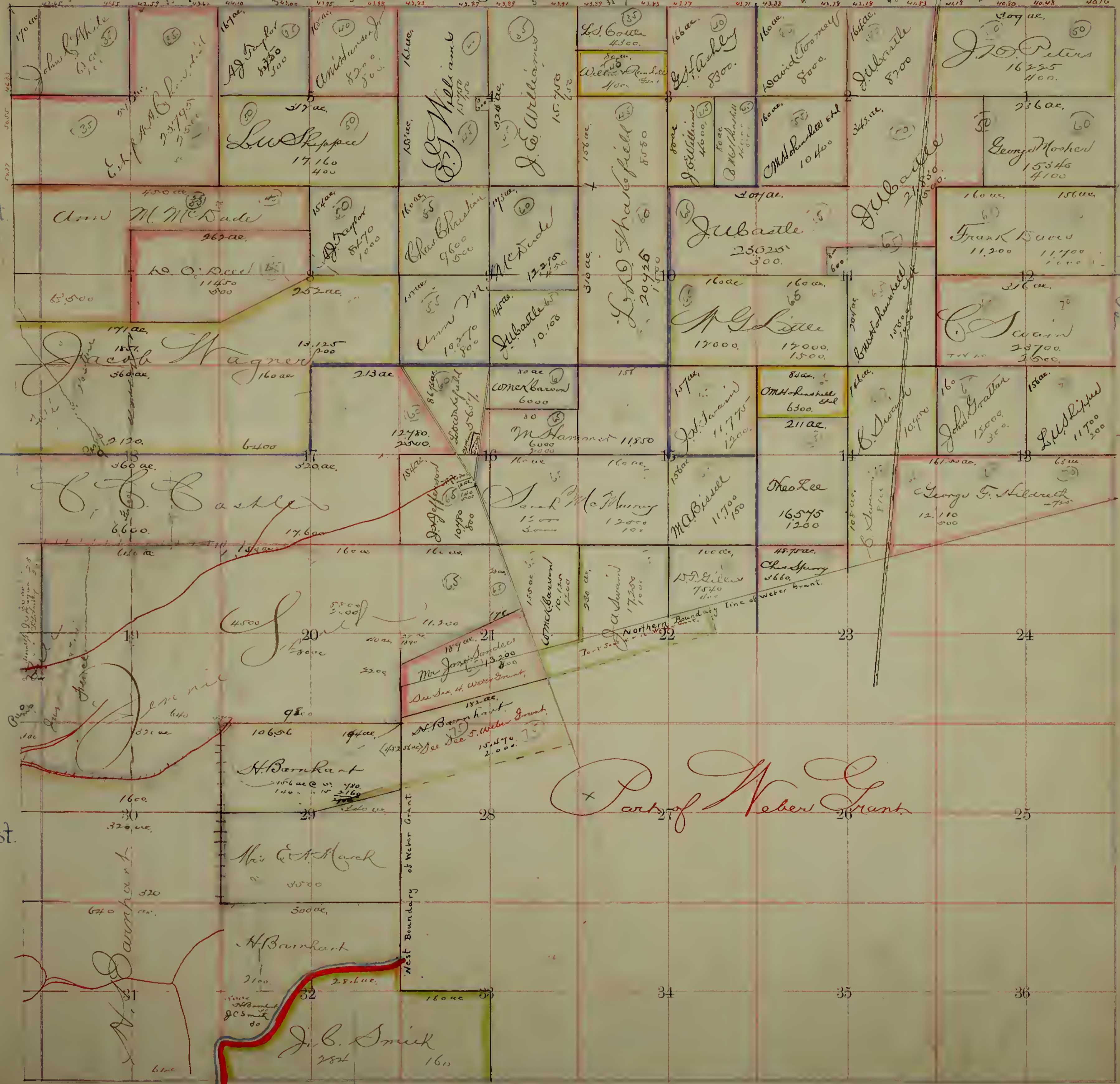


Wrightman Road District.

Township No. 2 North

Range No. 6 East

Mount Diablo Base and Meridian.



Waterloo 2 Road District.

North School District





Watertoo\* 1. Road District

Part Weber Grant

Glennwood School District

Nightingale Road Dist

Madison School Dist

Delpin School Dist

Criville School Dist

Parcel 15: 134 ac. Helen Weber, Adm. 10,000 600

Parcel 16: 26,650 ac. 3,000. E. Hildreth

Parcel 17: 29,100 ac. 3,000

Parcel 18: 154 ac. Helen Weber, Adm. 10,000 600

Parcel 19: 160 ac. N.E. Alling 10,400

Parcel 20: 160 ac. N.E. Alling 9,600

Parcel 21: 160 ac. N.E. Alling 9,400

Parcel 22: 160 ac. N.E. Alling 9,600

Parcel 23: 160 ac. N.E. Alling 9,400

Parcel 24: 160 ac. N.E. Alling 9,600

Parcel 25: 160 ac. N.E. Alling 9,400

Parcel 26: 160 ac. N.E. Alling 9,600

Parcel 27: 160 ac. N.E. Alling 9,400

Parcel 28: 160 ac. N.E. Alling 9,600

Parcel 29: 160 ac. N.E. Alling 9,400

Parcel 30: 160 ac. N.E. Alling 9,600

Parcel 31: 160 ac. N.E. Alling 9,400

Parcel 32: 160 ac. N.E. Alling 9,600

Parcel 33: 160 ac. N.E. Alling 9,400

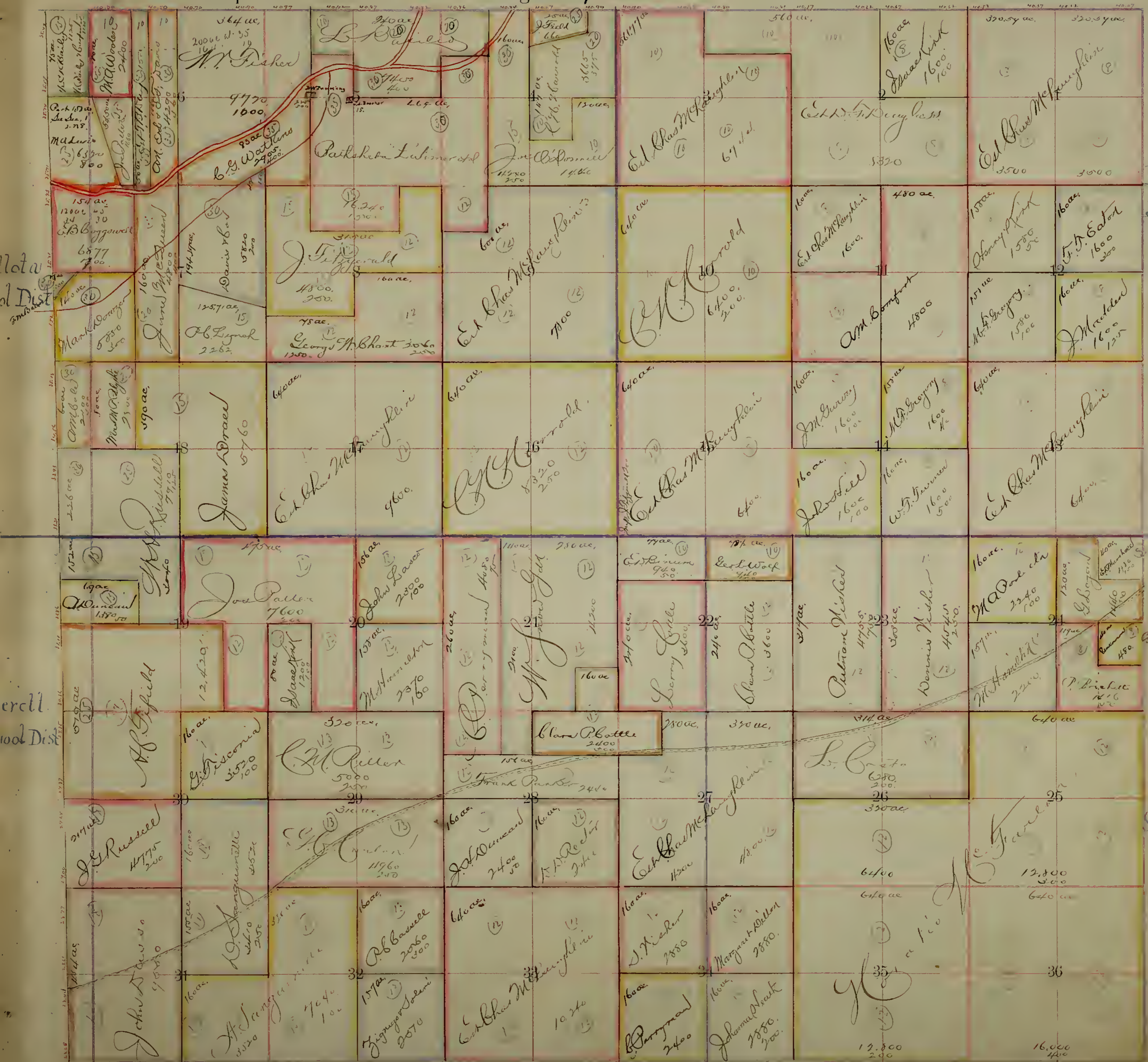
Parcel 34: 160 ac. N.E. Alling 9,600

Parcel 35: 160 ac. N.E. Alling 9,400









Douglas School Dist

Home School Dist

Bellota Road District.







Union Road District

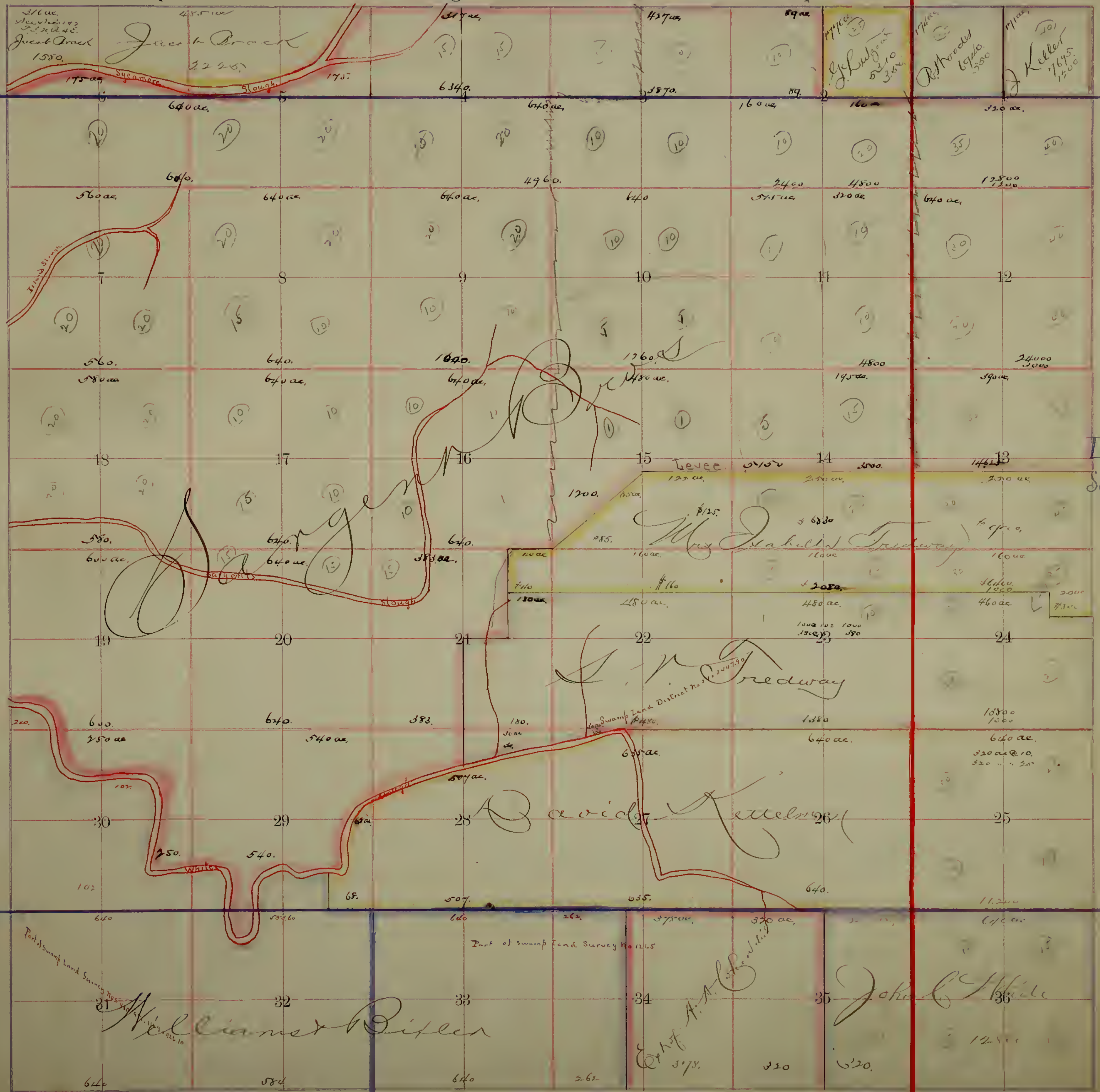
Turner School District.

Woodbridge Road Dist

Township No. 3 North

Range No. 5 East.

Mount Diablo Base and Meridian.



Dunbar School District.

Elkhorn School District.

La Beye School Dist



S E 1/4 of Sec 8. 3 N 6 E.

70 ac		60 ac.		
Geo. W. Perkins 1700.		40 ac. - C. A. Rich 2700.		
10 10 acs	8 10 acs	6 10 acs	4 10 acs	2 10 acs
A. J. Larson 600	A. J. Larson 600	W. D. Eaton 600	W. D. Eaton 600 150	J. W. Sharp 600
9 10 acs	7 10 acs	5 10 acs	3 10 acs	1 10 acs
A. J. Larson 600	A. J. Larson 600	Sue A. Scott 600	J. W. Sharp 1200	



Turner School District

Woodbridge Road District

Lodi Road District

Township No. 3 North

Range No. 6 East

Mount Diablo Base and Meridian.

Lafayette School Dist.

Salem School Dist.

Liv On School Dist.

Elkhorn School Dist.



Woods School District

Lodi

Henderson School District

David Stellman

B. J. Allison

John C. White

James J. Yelland

Henry Barnhart

John C. White

John Springer

L. S. Workfield

J. E. Williams

L. H. Jones

J. C. Shinn







Lockesford Road District.  
Township No. 3 North

Clements Road District  
Range No. 8 East.

Mount Diablo Base and Meridian.

Lockesford School District

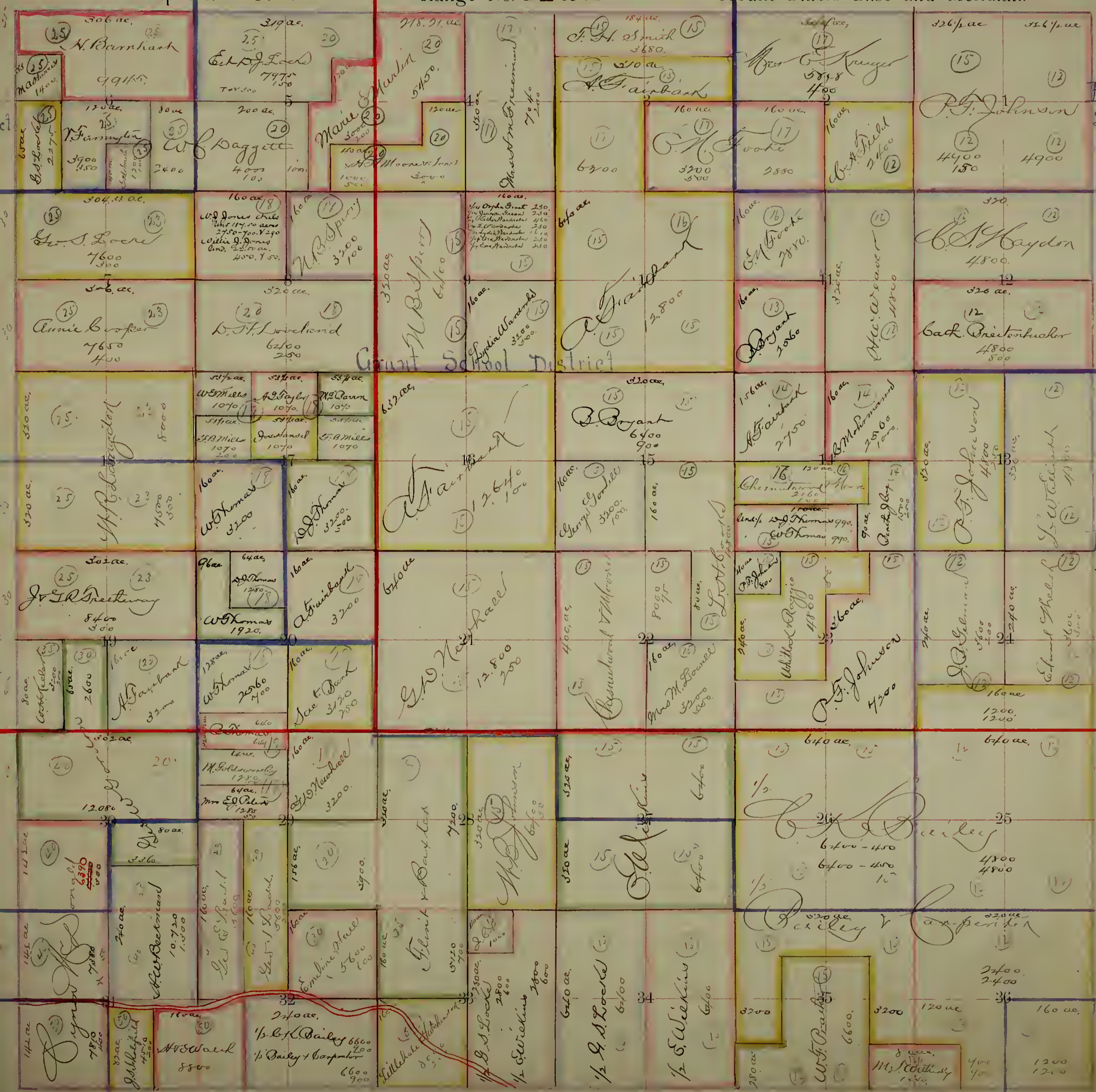
Brandt School D

Herring Grove School Dist.

Reservoir School Dist

Madison School Dist

Linden Road District. Moore School Dist



306 ac. (25)  
N. Barnhart  
9915

319 ac. (25)  
E. J. L. Lash  
7975  
7450  
1500

218.21 ac. (20)  
Murdin  
5450

184 ac. (15)  
F. H. Smith  
5850

160 ac. (17)  
Kuger  
5828  
4000

326 1/2 ac. (15)  
P. F. Johnson  
4400  
150

120 ac. (25)  
N. Farmington  
3900  
450

200 ac. (20)  
W. J. Baggett  
4000  
100

120 ac. (20)  
Marie & Murdin  
3000  
200

160 ac. (17)  
C. H. Cooke  
3200  
500

160 ac. (17)  
C. H. Cooke  
3550

326 1/2 ac. (12)  
P. F. Johnson  
4400  
150

304.33 ac. (25)  
G. S. Loeck  
7600  
350

160 ac. (17)  
W. J. Jones Childs  
247.17 ac. 290  
27.50-200.290  
Willie J. Jones  
and 22.50 ac.  
450.750

160 ac. (15)  
W. B. Sperry  
3200  
100

160 ac. (16)  
C. H. Cooke  
3800

160 ac. (12)  
C. H. Cooke  
3800

326 ac. (12)  
C. H. Cooke  
4800

306 ac. (25)  
Annie Cooper  
7650  
400

320 ac. (20)  
D. H. Loveland  
6200  
250

330 ac. (15)  
W. B. Sperry  
6000

160 ac. (15)  
C. H. Cooke  
3800

160 ac. (13)  
C. H. Cooke  
3060

326 ac. (12)  
C. H. Cooke  
4800  
800

320 ac. (25)  
W. B. Sperry  
8000

53 1/2 ac. (10)  
W. B. Sperry  
1070

632 ac. (15)  
W. B. Sperry  
12640  
100

320 ac. (15)  
C. H. Cooke  
6400  
900

160 ac. (14)  
C. H. Cooke  
2700

320 ac. (12)  
C. H. Cooke  
4800  
400

320 ac. (25)  
W. B. Sperry  
4500  
300

160 ac. (10)  
W. B. Sperry  
3200  
500

160 ac. (15)  
C. H. Cooke  
3200  
100

160 ac. (15)  
C. H. Cooke  
3200  
100

160 ac. (14)  
C. H. Cooke  
2500  
100

320 ac. (12)  
C. H. Cooke  
4800  
400

303 ac. (25)  
J. R. Bretherton  
8400  
300

96 ac. (10)  
W. B. Sperry  
1250  
75

640 ac. (15)  
W. B. Sperry  
12800  
200

400 ac. (15)  
C. H. Cooke  
8000  
100

160 ac. (15)  
C. H. Cooke  
3200  
500

320 ac. (12)  
C. H. Cooke  
4800  
400

30 ac. (25)  
W. B. Sperry  
2500  
250

160 ac. (10)  
W. B. Sperry  
3200  
400

120 ac. (15)  
W. B. Sperry  
2400  
200

160 ac. (15)  
C. H. Cooke  
3200  
500

160 ac. (15)  
C. H. Cooke  
3200  
500

320 ac. (12)  
C. H. Cooke  
4800  
400

302 ac. (20)  
W. B. Sperry  
12080

160 ac. (10)  
W. B. Sperry  
3200  
400

320 ac. (15)  
W. B. Sperry  
6400  
500

320 ac. (15)  
C. H. Cooke  
6400  
500

160 ac. (15)  
C. H. Cooke  
3200  
500

320 ac. (12)  
C. H. Cooke  
4800  
400

143 ac. (20)  
W. B. Sperry  
2860

160 ac. (10)  
W. B. Sperry  
3200  
400

320 ac. (15)  
W. B. Sperry  
6400  
500

320 ac. (15)  
C. H. Cooke  
6400  
500

160 ac. (15)  
C. H. Cooke  
3200  
500

320 ac. (12)  
C. H. Cooke  
4800  
400

143 ac. (20)  
W. B. Sperry  
2860

160 ac. (10)  
W. B. Sperry  
3200  
400

320 ac. (15)  
W. B. Sperry  
6400  
500

320 ac. (15)  
C. H. Cooke  
6400  
500

160 ac. (15)  
C. H. Cooke  
3200  
500

320 ac. (12)  
C. H. Cooke  
4800  
400

143 ac. (20)  
W. B. Sperry  
2860

160 ac. (10)  
W. B. Sperry  
3200  
400

320 ac. (15)  
W. B. Sperry  
6400  
500

320 ac. (15)  
C. H. Cooke  
6400  
500

160 ac. (15)  
C. H. Cooke  
3200  
500

320 ac. (12)  
C. H. Cooke  
4800  
400

143 ac. (20)  
W. B. Sperry  
2860

160 ac. (10)  
W. B. Sperry  
3200  
400

320 ac. (15)  
W. B. Sperry  
6400  
500

320 ac. (15)  
C. H. Cooke  
6400  
500

160 ac. (15)  
C. H. Cooke  
3200  
500

320 ac. (12)  
C. H. Cooke  
4800  
400



# Clements Road District

Township No. 37 North

Range No. 9 East

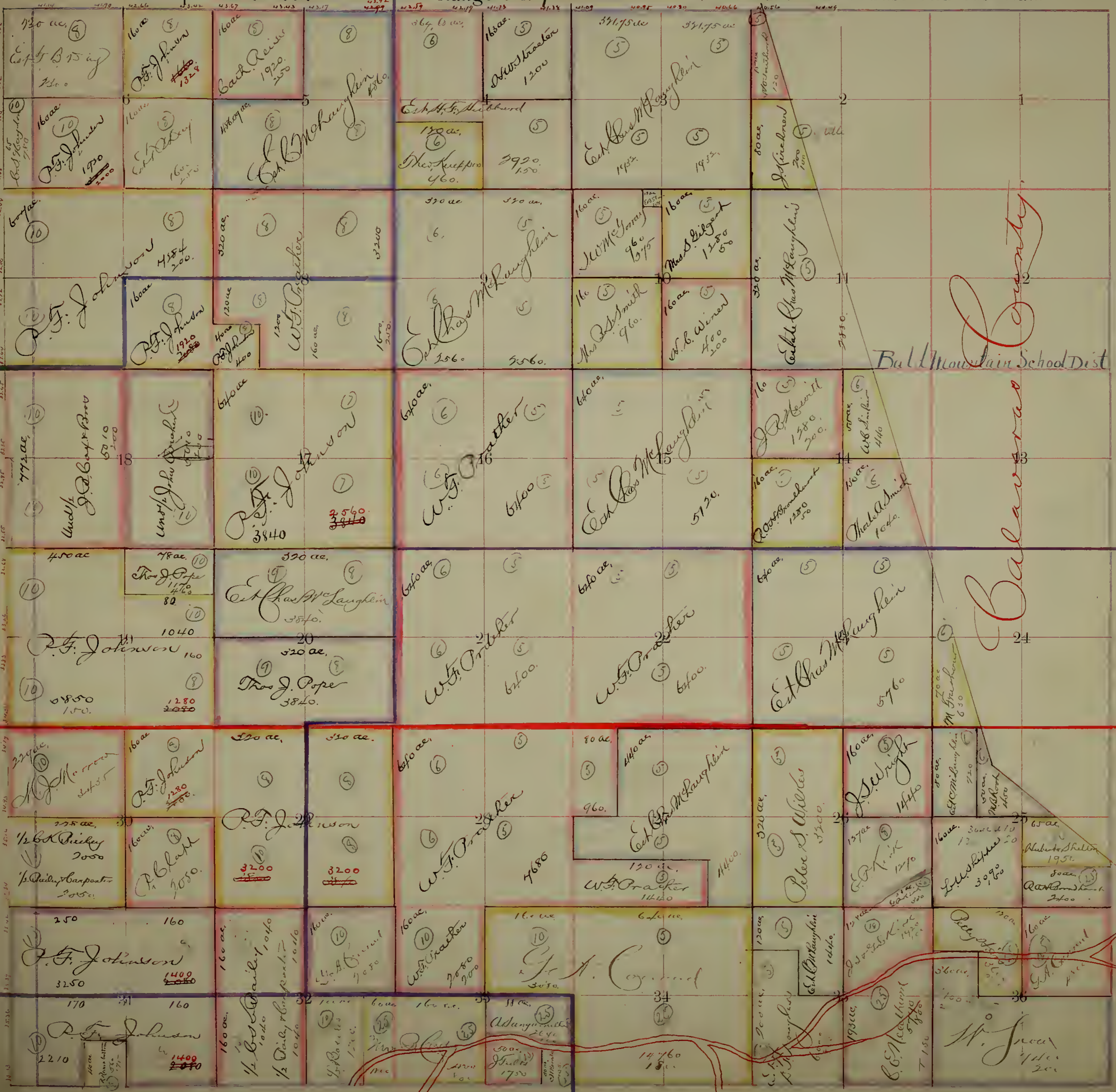
Mount Diablo Base and Meridian.

Brandt School Dist.

Reservoir School Dist.

Bald Mountain School Dist.

Balawara



Bellota School District

Bellota Road District

Dougllass School District.





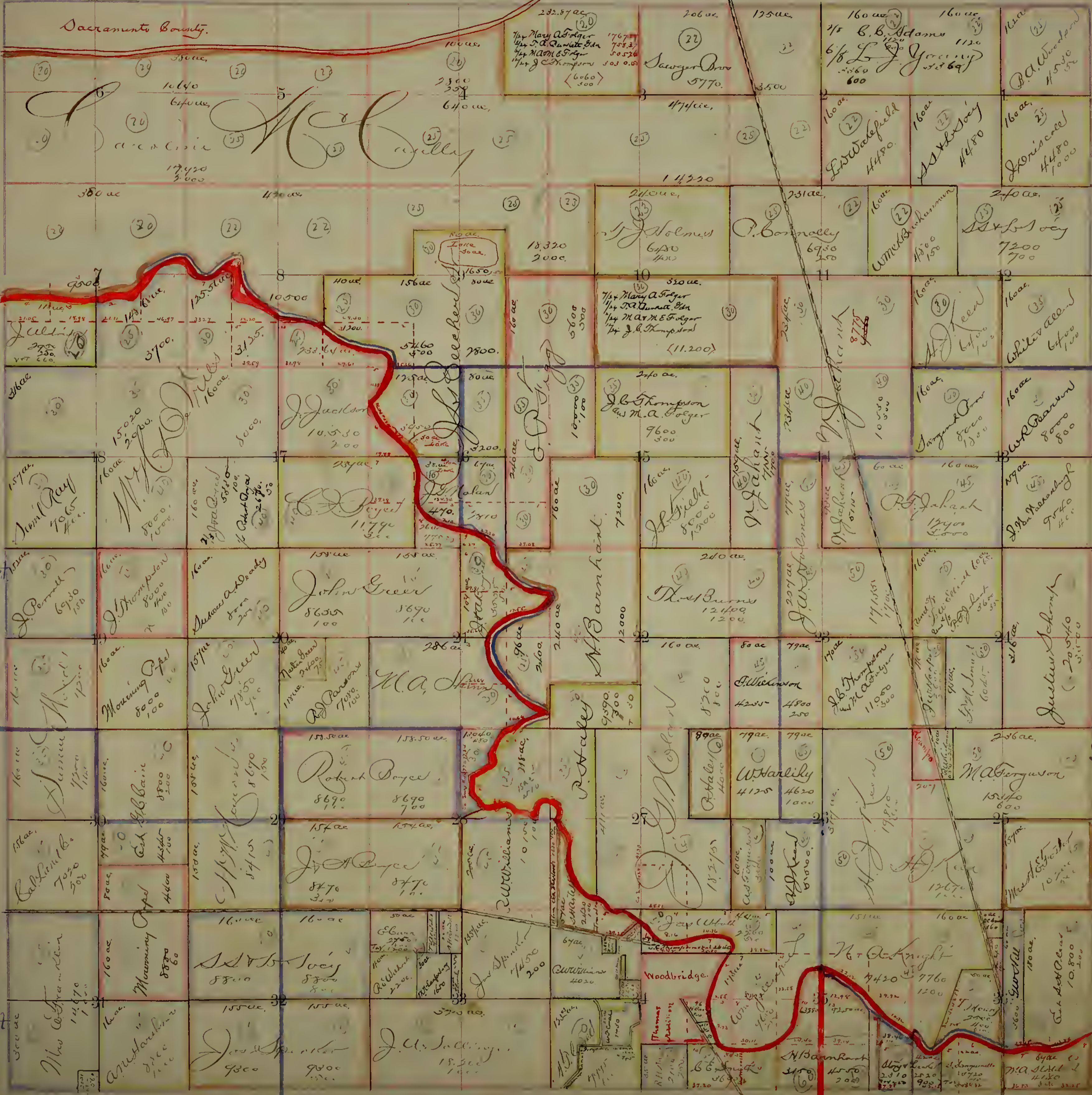






Liberty Road District.  
Township No. 4 North  
Range No. 6 East.

Liberty School District.  
Mount Diablo Base and Meridian.



Woodbridge Road District. Woods School District.

Lodi Road District

Franklin School District

Turner School District

Houston School District

Sacramento County



Liberty Road District. Telegraph School Dist  
Township No. 4 North Range No. 7 East.

Elliott Road District.  
Mount Diablo Base and Meridian.

Liberty School Dist.

Elliott School Dist.

Brunswick School Dist.

Houston School Dist.

Sile School Dist.

Lodi Road District.

Alpine School District

Lockeford Road District.









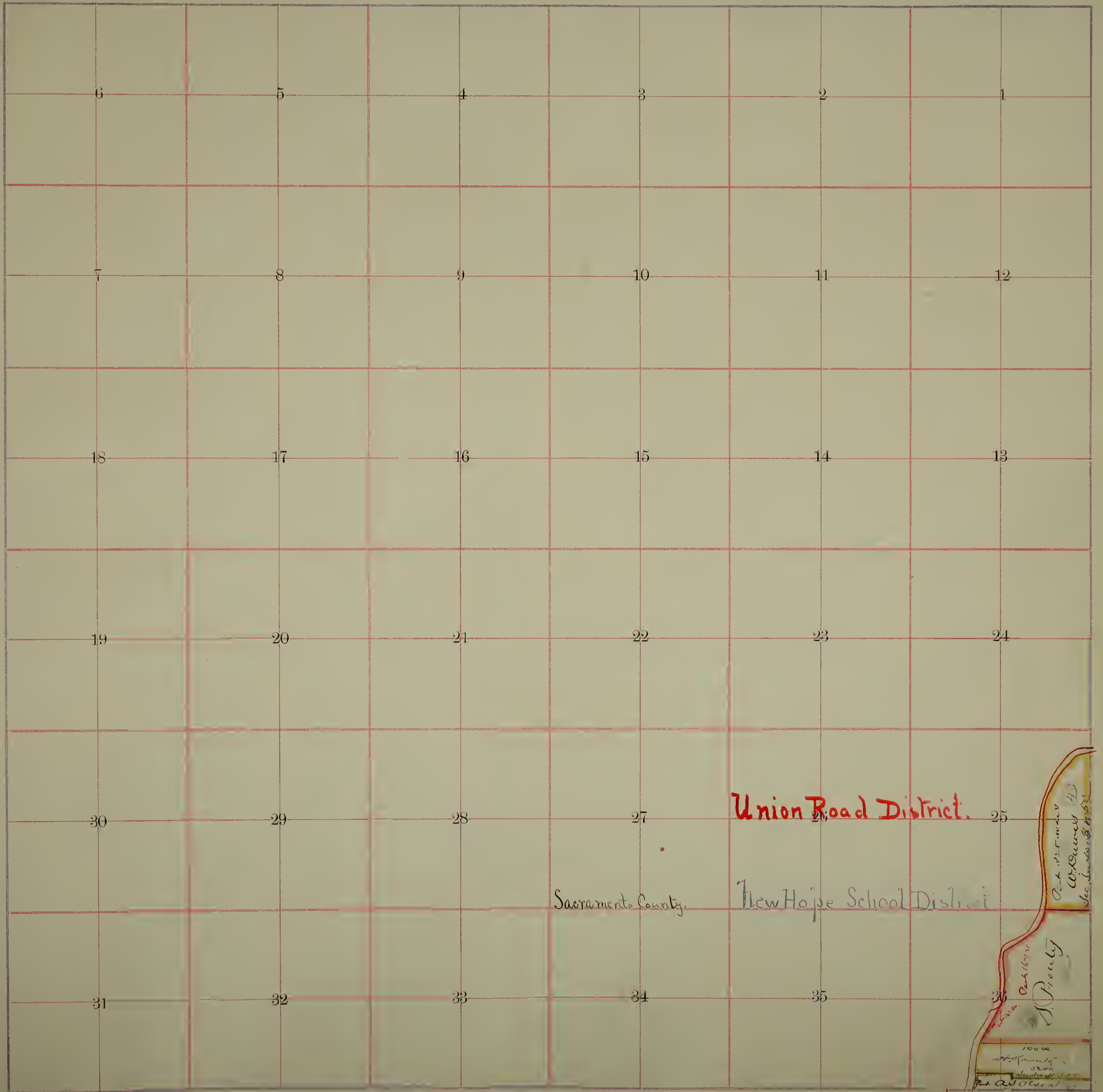




Township No. 5 North

Range No. 4 East.

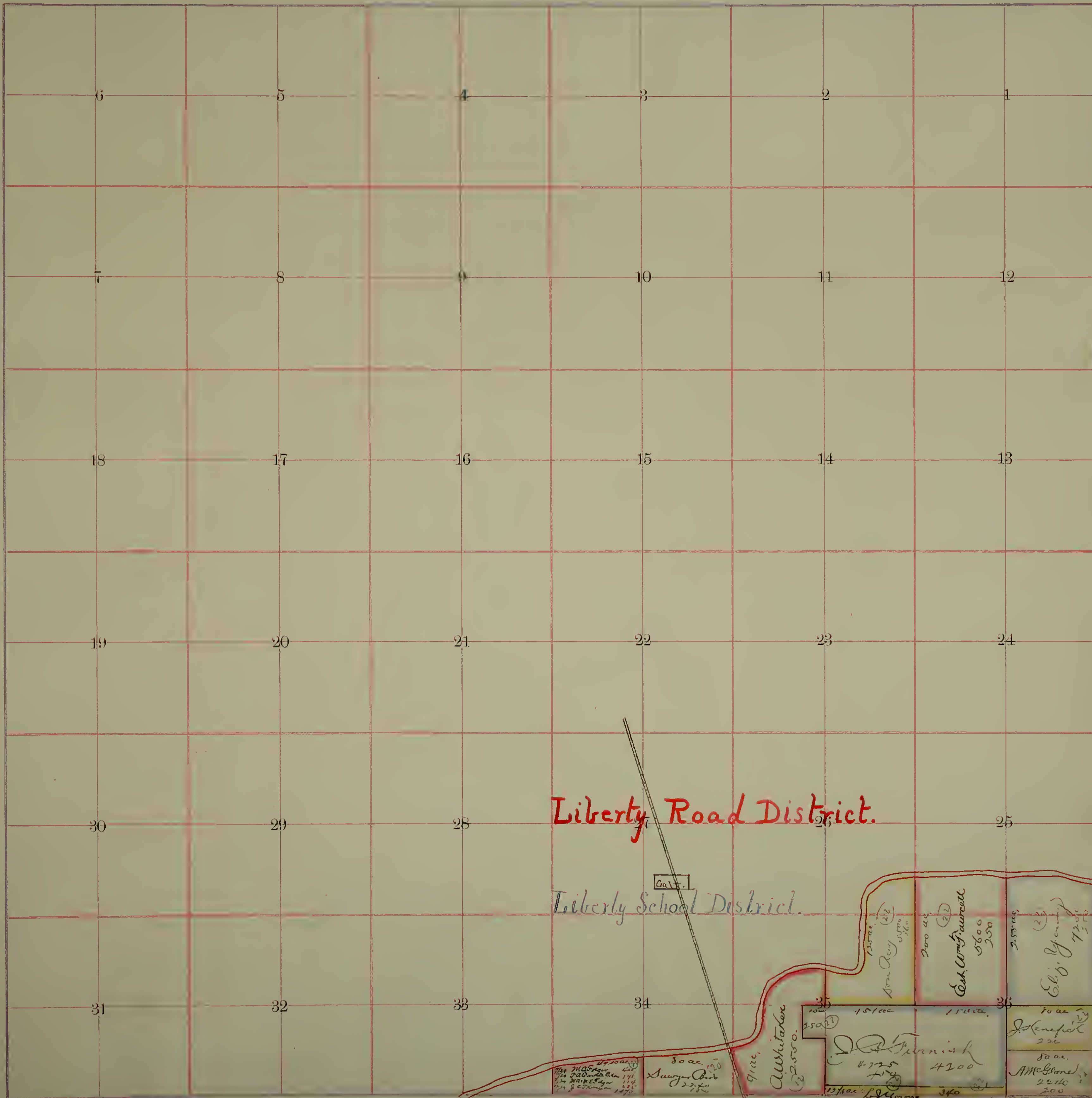
Mount Diablo Base and Meridian.





























# Burnett Road District.

Kingston School District.

Township No. 1 South

Range No. 5 East.

Mount Diablo Base and Meridian.



*George O. Williams, Exr.*

**Tule Road District**

*David Pixler*  
Swamp Land Survey No 1337-2283-50

**Tracy Road District**

**Bantas Road District.**

**Burnett Road Dist**

Garden School

Fairchild School Dis

*David Pixler*

*David Pixler*

*Rate 1096*

*Rate 1500*

*W. P. Pile*

*W. Wagner*

*J. A. Morney*

*Estate of M. Magle*

*M. A. Magle*

*Estate of D. M. Langheim*

*Estate of M. Langheim*

*Estate of M. Langheim*

*M. A. Magle*

*M. A. Magle*

*M. A. Magle*

*M. A. Magle*

*M. A. Magle*

*M. A. Magle*

*M. A. Magle*

*M. A. Magle*

*M. A. Magle*

*M. A. Magle*

*Part of Swamp Land Sur. No. 1337-2283-50*

*Part of Swamp Land Survey No. 1337-2283-50*

*Part of Swamp Land Survey No. 1337-2283-50*

*Swamp Land Survey No. 1337-2283-50*

100

100

100

30

100

100

30

150

100

30

150

100

30

500

500

500

500

500

500

2880

1410

200

190

2070

309

2750

5760

240 ac

240 ac

240 ac

240 ac

240 ac

240 ac

240 ac

240 ac

240 ac

240 ac

330 ac

330 ac

330 ac

330 ac

330 ac

330 ac

330 ac

330 ac

330 ac

330 ac

592 ac

592 ac

592 ac

592 ac

592 ac

592 ac

592 ac

592 ac

592 ac

592 ac

160 ac

160 ac

160 ac

160 ac

160 ac

160 ac

160 ac

160 ac

160 ac

160 ac

2880

1410

200

190

2070

309

2750

5760

5760

5760

240 ac

240 ac

240 ac

240 ac

240 ac

240 ac

240 ac

240 ac

240 ac

240 ac

330 ac

330 ac

330 ac

330 ac

330 ac

330 ac

330 ac

330 ac

330 ac

330 ac

592 ac

592 ac

592 ac

592 ac

592 ac

592 ac

592 ac

592 ac

592 ac

592 ac

160 ac

160 ac

160 ac

160 ac

160 ac

160 ac

160 ac

160 ac

160 ac

160 ac

2880

1410

200

190

2070

309

2750

5760

5760

5760

240 ac

240 ac

240 ac

240 ac

240 ac

240 ac

240 ac

240 ac

240 ac

240 ac

330 ac

330 ac

330 ac

330 ac

330 ac

330 ac

330 ac

330 ac

330 ac

330 ac

592 ac

592 ac

592 ac

592 ac

592 ac

592 ac

592 ac

592 ac

592 ac

592 ac

160 ac

160 ac

160 ac

160 ac

160 ac

160 ac

160 ac

160 ac

160 ac

160 ac

2880

1410

200

190

2070

309

2750

5760

5760

5760

240 ac

240 ac

240 ac

240 ac

240 ac

240 ac

240 ac

240 ac

240 ac

240 ac

330 ac

330 ac

330 ac

330 ac

330 ac

330 ac

330 ac

330 ac

330 ac

330 ac

592 ac

592 ac

592 ac

592 ac

592 ac

592 ac

592 ac

592 ac

592 ac

592 ac

160 ac

160 ac

160 ac

160 ac

160 ac

160 ac

160 ac

160 ac

160 ac

160 ac

2880

1410

200

190

2070

309

2750

5760

5760

5760

240 ac

240 ac

240 ac

240 ac

240 ac

240 ac

240 ac

240 ac

240 ac

240 ac

330 ac

330 ac

330 ac

330 ac

330 ac

330 ac

330 ac

330 ac

330 ac

330 ac

592 ac

592 ac

592 ac

592 ac

592 ac

592 ac

592 ac

592 ac

592 ac

592 ac

160 ac

160 ac

160 ac

160 ac

160 ac

160 ac

160 ac

160 ac

160 ac

160 ac



Burnett Road District.

Township No. 1 South

Range No. 6 East.

Mount Diablo Base and Meridian.

Fairchild School Dist.

French Camp Road District.

French Camp School District.

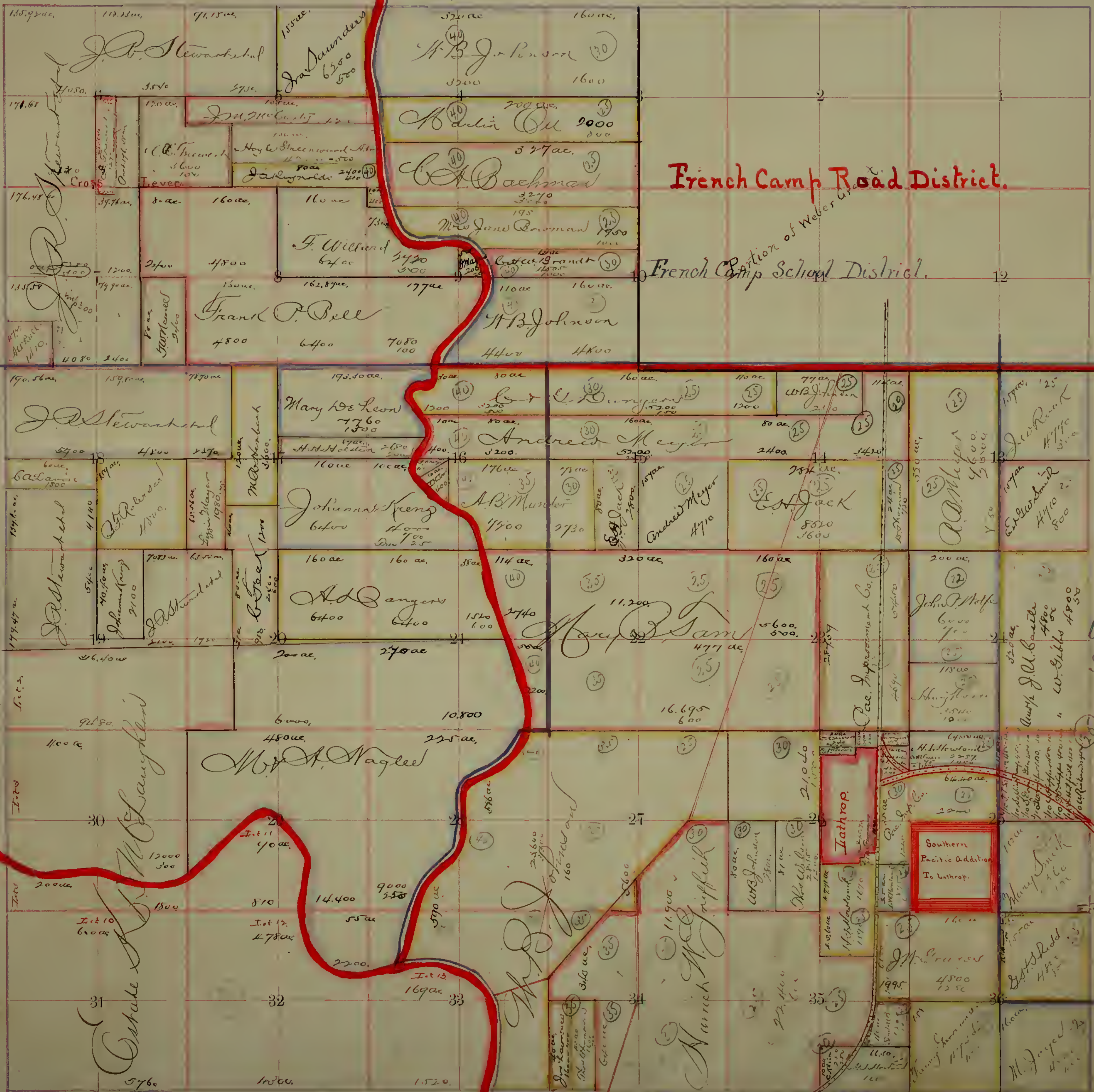
Union School Dist.

Garden School Dist.

Future School Dist.

Banta Road District.

Lathrop Road District.





Township No. 1 South

Range No. 7 East

Mount Diablo Base and Meridian

McKamy School Dist

133 ac. Thos J. Pope 6650 900	26.5 ac. Amelia Barra 13350 800	115.4 ac. John H. Mayer 5725	137 ac. Kaiser 13700 1600	137 ac. A Wolf 6850 2000
160 ac. M. B. Jones 8000	160 ac. Amelia Barra 4000	157 ac. M. H. Jones 7850	160 ac. Valentine 16000	159 ac. J. Mansfield 7950 400
160 ac. John Reynolds 5000	160 ac. George H. Barlow 5600	160 ac. George H. Barlow 5600	160 ac. E. J. Brown 6240	160 ac. W. Barry 7200 500
160 ac. James 5000	160 ac. George H. Barlow 5600	160 ac. George H. Barlow 5600	160 ac. J. M. Nitcher 5000	160 ac. M. D. Miller 7300 800
160 ac. Ed. J. Taylor 4000	160 ac. George H. Barlow 5600	160 ac. George H. Barlow 5600	160 ac. J. M. Nitcher 5000	160 ac. M. D. Miller 7300 800
160 ac. Edward 3975	160 ac. George H. Barlow 5600	160 ac. George H. Barlow 5600	160 ac. J. M. Nitcher 5000	160 ac. M. D. Miller 7300 800
160 ac. Noah Blapp 4000	160 ac. George H. Barlow 5600	160 ac. George H. Barlow 5600	160 ac. J. M. Nitcher 5000	160 ac. M. D. Miller 7300 800
160 ac. Elizabeth F. Salmon 3975	160 ac. George H. Barlow 5600	160 ac. George H. Barlow 5600	160 ac. J. M. Nitcher 5000	160 ac. M. D. Miller 7300 800
160 ac. Peter Capts 15700 1500	160 ac. George H. Barlow 5600	160 ac. George H. Barlow 5600	160 ac. J. M. Nitcher 5000	160 ac. M. D. Miller 7300 800
160 ac. L. M. Remington 8260	160 ac. George H. Barlow 5600	160 ac. George H. Barlow 5600	160 ac. J. M. Nitcher 5000	160 ac. M. D. Miller 7300 800
160 ac. M. D. Jones 15500	160 ac. George H. Barlow 5600	160 ac. George H. Barlow 5600	160 ac. J. M. Nitcher 5000	160 ac. M. D. Miller 7300 800
160 ac. W. B. Bailey 4160 500	160 ac. George H. Barlow 5600	160 ac. George H. Barlow 5600	160 ac. J. M. Nitcher 5000	160 ac. M. D. Miller 7300 800
160 ac. J. B. Sperry 3660 100	160 ac. George H. Barlow 5600	160 ac. George H. Barlow 5600	160 ac. J. M. Nitcher 5000	160 ac. M. D. Miller 7300 800
160 ac. Joshua Powell 12330	160 ac. George H. Barlow 5600	160 ac. George H. Barlow 5600	160 ac. J. M. Nitcher 5000	160 ac. M. D. Miller 7300 800
160 ac. Joshua Powell 12330	160 ac. George H. Barlow 5600	160 ac. George H. Barlow 5600	160 ac. J. M. Nitcher 5000	160 ac. M. D. Miller 7300 800
160 ac. Joshua Powell 12330	160 ac. George H. Barlow 5600	160 ac. George H. Barlow 5600	160 ac. J. M. Nitcher 5000	160 ac. M. D. Miller 7300 800

Portion of Weber Grant

Castle School District

Wildwood School Dist

Union School Dist

Zinc House School Dist

Lalthrop Road District

Castle School District

French Camp Road District







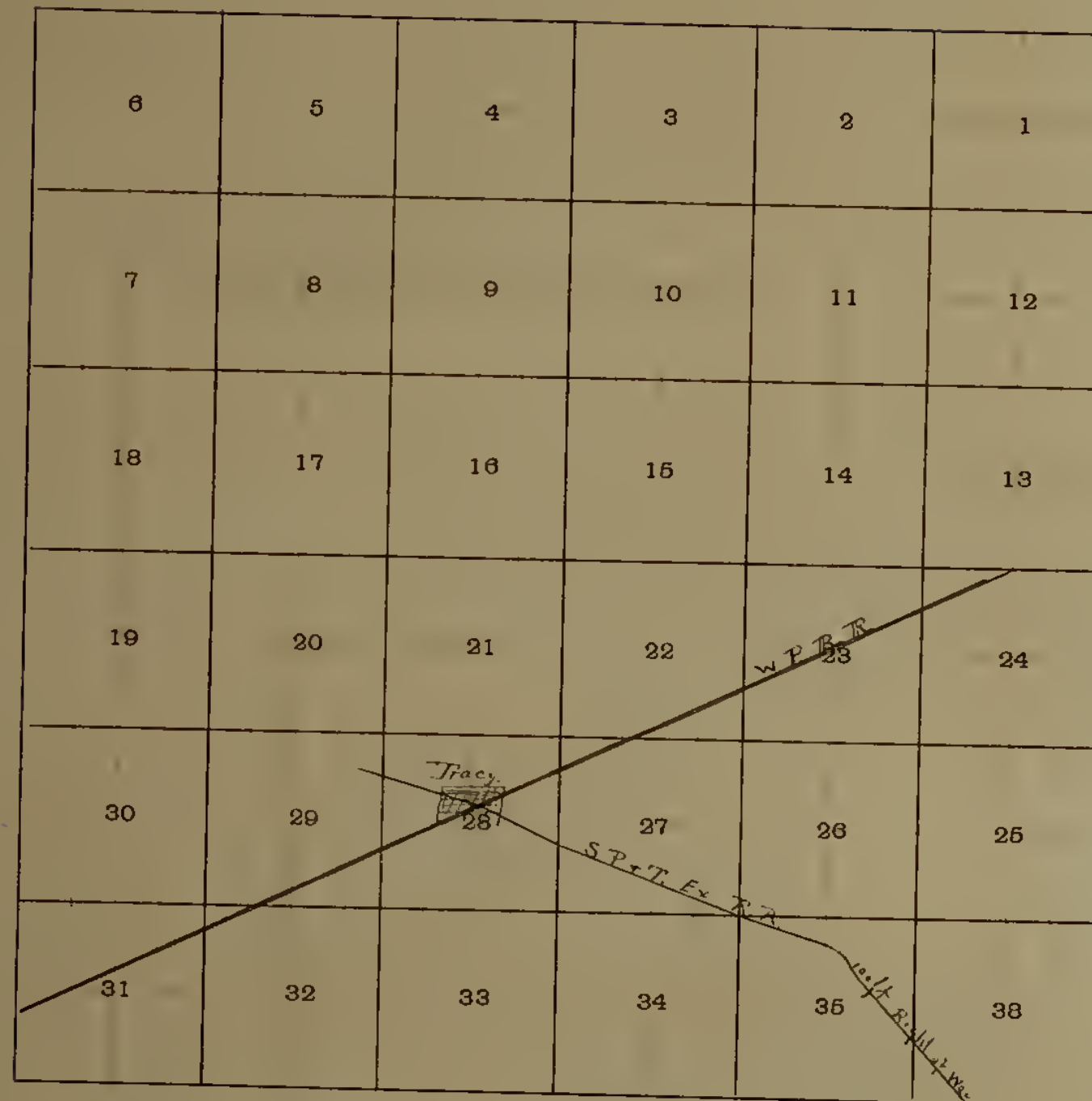








Township No. *2 S.* Range No. *5 E.* Meridian.



TOWNSHIP PLAT

A. J. LEARY, Manufacturing Stationer and Printer, 409 1/2 Sansome Street, S. F.

- Meridian Line,
- Base Line,
- Standard Line,
- Township Lines,
- Section Lines,
- Meander Lines,
- Office Work.

*Handwritten notes:*  
 2 S. 5 E.  
 1/4 Sec. 28  
 1/4 Sec. 27  
 1/4 Sec. 26













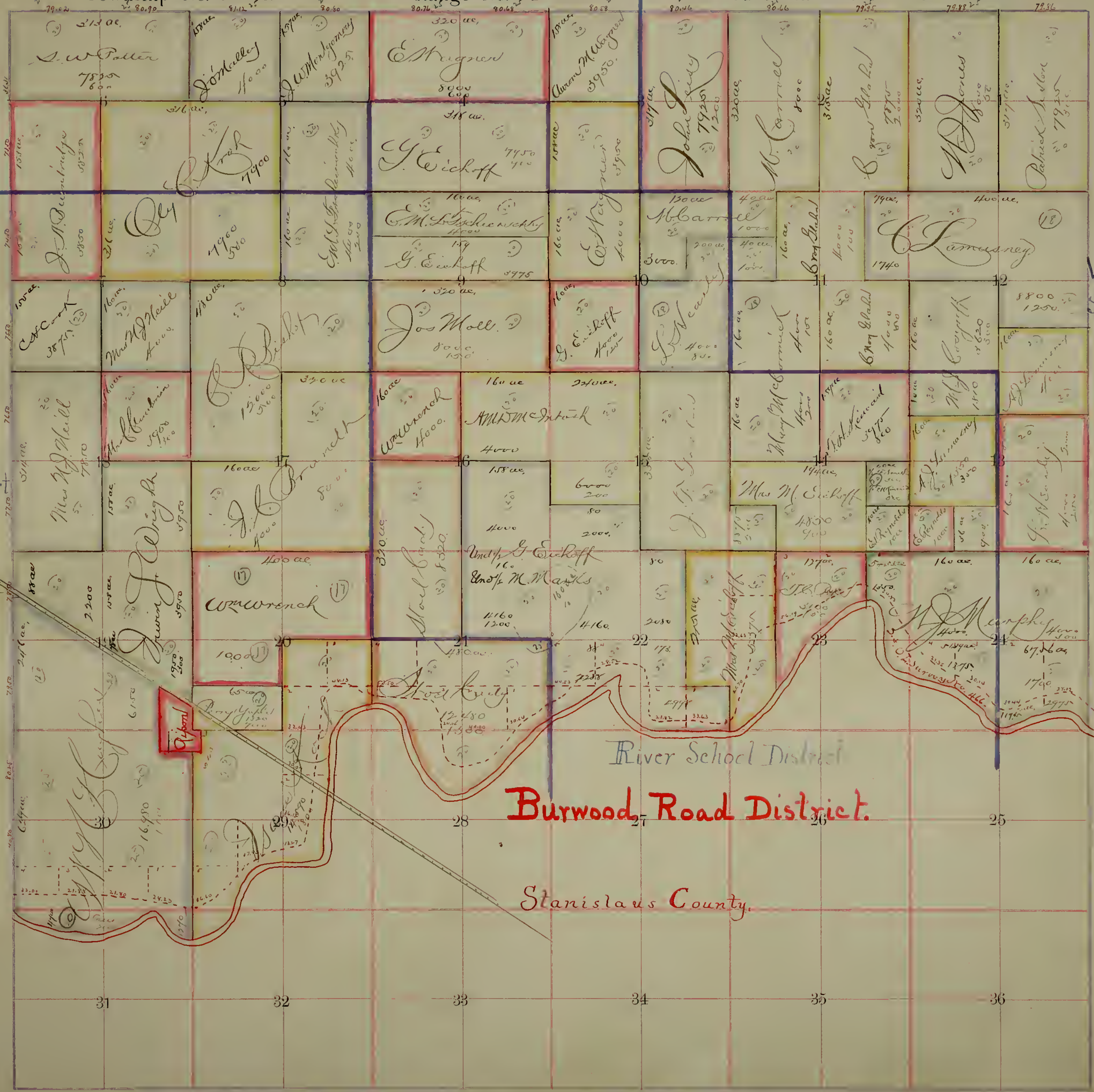


Zinc House School District

Township No. 2 South

Range No. 8 East.

Mount Diablo Base and Meridian.



Ripon School District

Van Allen School District

River School District

Burwood Road District.

Stanislaus County.











3 0.5 E.

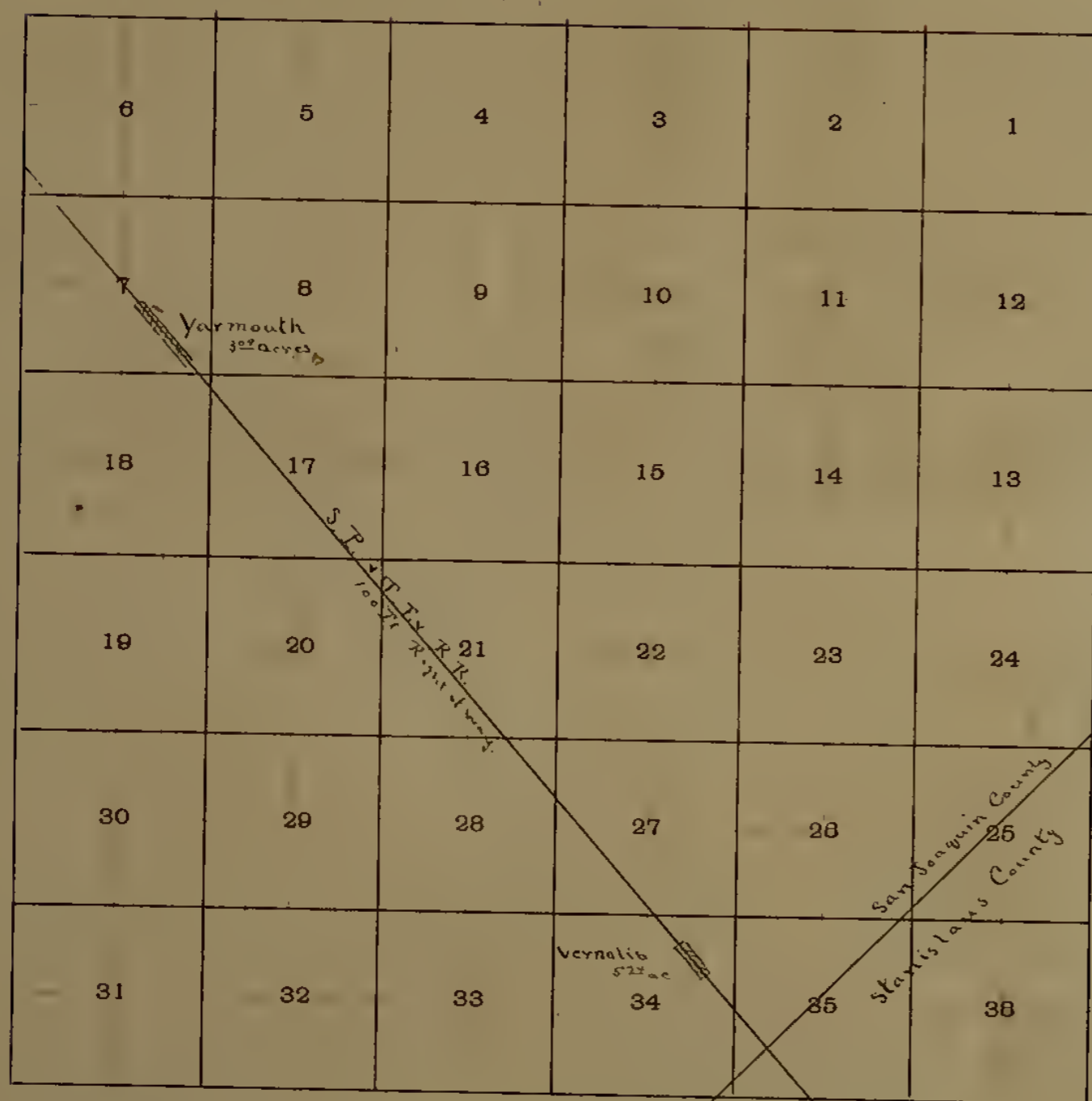
	2	1
	"	12







Township No. *3 S.* Range No. *6 E.* Meridian.



SCALE 80 CHAINS TO 1 INCH.

TOWNSHIP PLAN

A. J. LEARY, Manufacturing Stationer and Printer, 409-414 Sansome Street, S. F.

Meridian Line,  
 Base Line,  
 Standard Line,  
 Township Lines,  
 Section Lines,  
 Meander Lines,  
 Office Work.











6		320 ac. East M. Laughlin 07.0	Good Land	320 ac. East M. Laughlin 500	320 ac. East M. Laughlin 500	320 ac. East M. Laughlin 500	160 ac. G.W. Wilson 250 100	638.40
7		640 ac. Good Land	East M. Laughlin 1000.	Good Land	640 ac. East M. Laughlin 1000	640 ac. East M. Laughlin 1000	160 ac. G.W. Wilson 250 100	638.40
Tracy Road District		40 ac. Jordan 0.0					160 ac. G.W. Wilson 250 100	638.40
15		320 ac. East M. Laughlin 07.0	J. H. Hyslop 1000.	640 ac. East M. Laughlin 1000	640 ac. East M. Laughlin 1000	640 ac. East M. Laughlin 1000	160 ac. G.W. Wilson 250 100	638.40
Jefferson School District							160 ac. G.W. Wilson 250 100	638.40
18		640 ac. Good Land	East M. Laughlin 1000.	640 ac. East M. Laughlin 1000	640 ac. East M. Laughlin 1000	640 ac. East M. Laughlin 1000	160 ac. G.W. Wilson 250 100	638.40
19		640 ac. Good Land	East M. Laughlin 1000.	640 ac. East M. Laughlin 1000	640 ac. East M. Laughlin 1000	640 ac. East M. Laughlin 1000	160 ac. G.W. Wilson 250 100	638.40
Alameda County							160 ac. G.W. Wilson 250 100	638.40
20		640 ac. Good Land	East M. Laughlin 1000.	640 ac. East M. Laughlin 1000	640 ac. East M. Laughlin 1000	640 ac. East M. Laughlin 1000	160 ac. G.W. Wilson 250 100	638.40
21		640 ac. Good Land	East M. Laughlin 1000.	640 ac. East M. Laughlin 1000	640 ac. East M. Laughlin 1000	640 ac. East M. Laughlin 1000	160 ac. G.W. Wilson 250 100	638.40
22		640 ac. Good Land	East M. Laughlin 1000.	640 ac. East M. Laughlin 1000	640 ac. East M. Laughlin 1000	640 ac. East M. Laughlin 1000	160 ac. G.W. Wilson 250 100	638.40
23		640 ac. Good Land	East M. Laughlin 1000.	640 ac. East M. Laughlin 1000	640 ac. East M. Laughlin 1000	640 ac. East M. Laughlin 1000	160 ac. G.W. Wilson 250 100	638.40
24		640 ac. Good Land	East M. Laughlin 1000.	640 ac. East M. Laughlin 1000	640 ac. East M. Laughlin 1000	640 ac. East M. Laughlin 1000	160 ac. G.W. Wilson 250 100	638.40
25		640 ac. Good Land	East M. Laughlin 1000.	640 ac. East M. Laughlin 1000	640 ac. East M. Laughlin 1000	640 ac. East M. Laughlin 1000	160 ac. G.W. Wilson 250 100	638.40
26		640 ac. Good Land	East M. Laughlin 1000.	640 ac. East M. Laughlin 1000	640 ac. East M. Laughlin 1000	640 ac. East M. Laughlin 1000	160 ac. G.W. Wilson 250 100	638.40
27		640 ac. Good Land	East M. Laughlin 1000.	640 ac. East M. Laughlin 1000	640 ac. East M. Laughlin 1000	640 ac. East M. Laughlin 1000	160 ac. G.W. Wilson 250 100	638.40
28		640 ac. Good Land	East M. Laughlin 1000.	640 ac. East M. Laughlin 1000	640 ac. East M. Laughlin 1000	640 ac. East M. Laughlin 1000	160 ac. G.W. Wilson 250 100	638.40
29		640 ac. Good Land	East M. Laughlin 1000.	640 ac. East M. Laughlin 1000	640 ac. East M. Laughlin 1000	640 ac. East M. Laughlin 1000	160 ac. G.W. Wilson 250 100	638.40
30		640 ac. Good Land	East M. Laughlin 1000.	640 ac. East M. Laughlin 1000	640 ac. East M. Laughlin 1000	640 ac. East M. Laughlin 1000	160 ac. G.W. Wilson 250 100	638.40
31		640 ac. Good Land	East M. Laughlin 1000.	640 ac. East M. Laughlin 1000	640 ac. East M. Laughlin 1000	640 ac. East M. Laughlin 1000	160 ac. G.W. Wilson 250 100	638.40
32		640 ac. Good Land	East M. Laughlin 1000.	640 ac. East M. Laughlin 1000	640 ac. East M. Laughlin 1000	640 ac. East M. Laughlin 1000	160 ac. G.W. Wilson 250 100	638.40







