

PLAT BOOK  
OF

CLARK COUNTY

ILLINOIS

(Compiled & Published)

BY

GEO. A. OGLE & CO.

415 & 417 DEARBORN ST.  
CHICAGO.

1892.

Eng by Balliet & Volk,  
27 So. Sixth St. Phila.

Printed by F. Bourquin,  
31 So. 6th St. Philad.

OK.  
5

# TABLE OF CONTENTS.

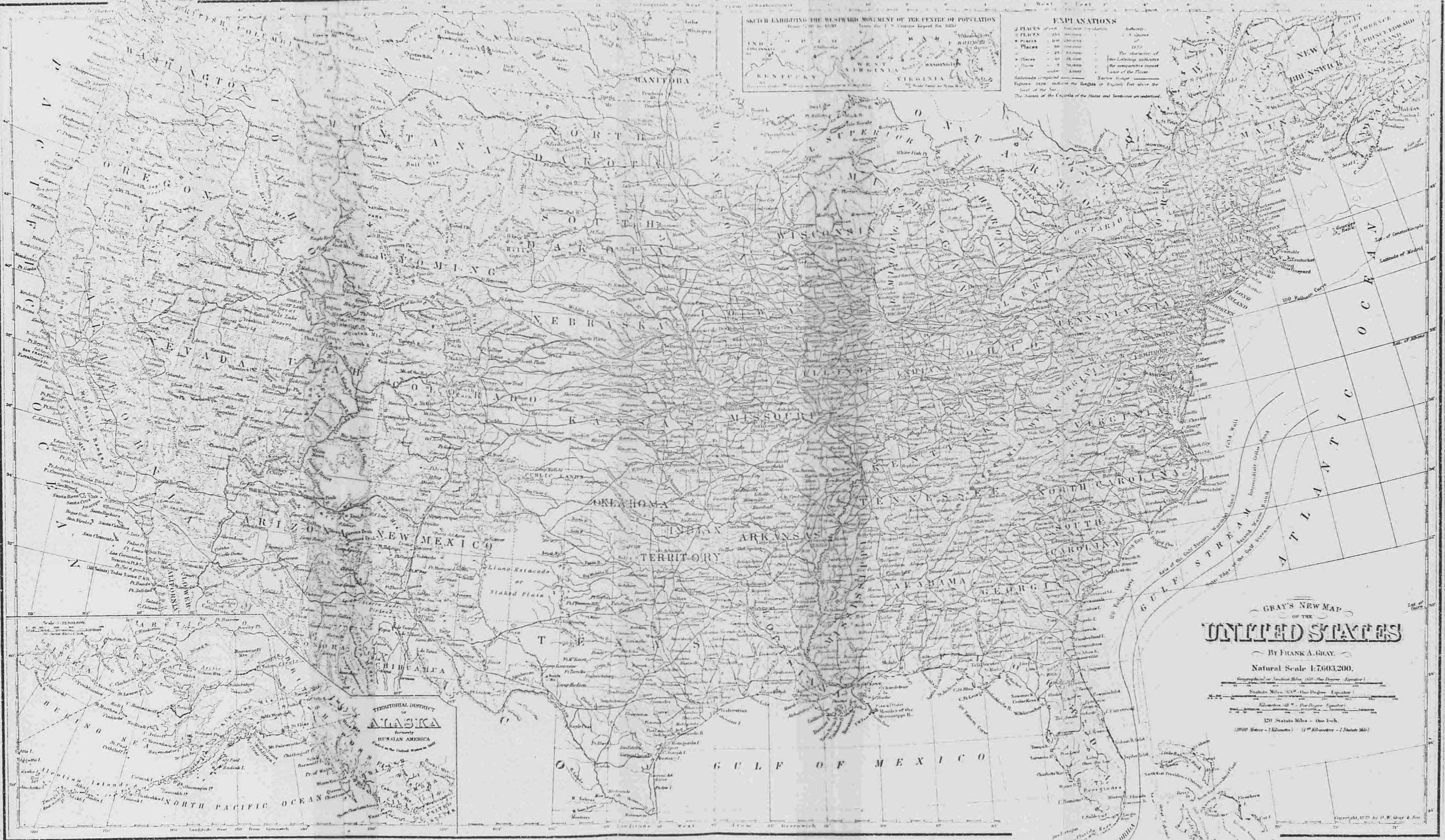
## GENERAL INDEX.

	PAGE		PAGE
TITLE PAGE .....	3	OUTLINE MAP OF CLARK COUNTY, ILL.....	15
TABLE OF CONTENTS.....	5	ANALYSIS OF THE SYSTEM OF UNITED	
MAP OF THE UNITED STATES .....	8 & 9	STATES LAND SURVEYS.....	69
MAP OF THE STATE OF ILLINOIS.....	12 & 18	HISTORICAL DIRECTORY OF CLARK CO.....	71

## CLARK COUNTY INDEX.

PAGE		PAGE		PAGE	
ANDERSON TOWNSHIP .....	45	DENNISON VILLAGE .....	31	MELROSE TOWNSHIP .....	51
AUBURN TOWNSHIP .....	42	DOLSON TOWNSHIP .....	29	MELROSE VILLAGE.....	21
AUBURN VILLAGE .....	65	DOLSON VILLAGE .....	47	ORANGE TOWNSHIP .....	53
CASEY TOWNSHIP.....	35	DOUGLAS TOWNSHIP .....	27	PARKER TOWNSHIP .....	33
CASEY, PLAT OF .....	38 & 59	HATTON VILLAGE.....	23	WABASH TOWNSHIP .....	23 & 23
CASTLE FIN VILLAGE.....	27	JOHNSON TOWNSHIP .....	55	WALNUT PRAIRIE VILLAGE.....	39
CLARK CENTER P. O.....	65	LIVINGSTON VILLAGE.....	39	WESTFIELD TOWNSHIP .....	31
CLARKSVILLE VILLAGE.....	47	MARSHALL CITY .....	18 & 19	WESTFIELD VILLAGE .....	61
COHN VILLAGE.....	39	MARSHALL TOWNSHIP .....	25	WEST UNION VILLAGE .....	67
DARWIN TOWNSHIP .....	47	MARTINSVILLE TOWNSHIP.....	38 & 39	YORK TOWNSHIP .....	49
DARWIN VILLAGE .....	67	MARTINSVILLE, PLAT OF .....	42 & 43	YORK VILLAGE .....	62
		McKEEN VILLAGE.....	28		

A 912.773  
P201  
Withdrawn from Crer 18146  
56685



**EXPLANATIONS**

PLACES	Population	Authority
• PLACES	250,000 and over	U. S. Census
• PLACES	100,000 and over	1875
• PLACES	50,000 and over	The authorities of the respective states
• PLACES	25,000 and over	1875
• PLACES	10,000 and over	The authorities of the respective states
• PLACES	5,000 and over	1875
• PLACES	under 5,000	The authorities of the respective states

Distances indicated by the figures in English feet above the level of the sea.  
 The names of the Capitals of the States and Territories are underlined.

GRAY'S NEW MAP  
 OF THE  
**UNITED STATES**

By FRANK A. GRAY.  
 Natural Scale 1:7,603,200.

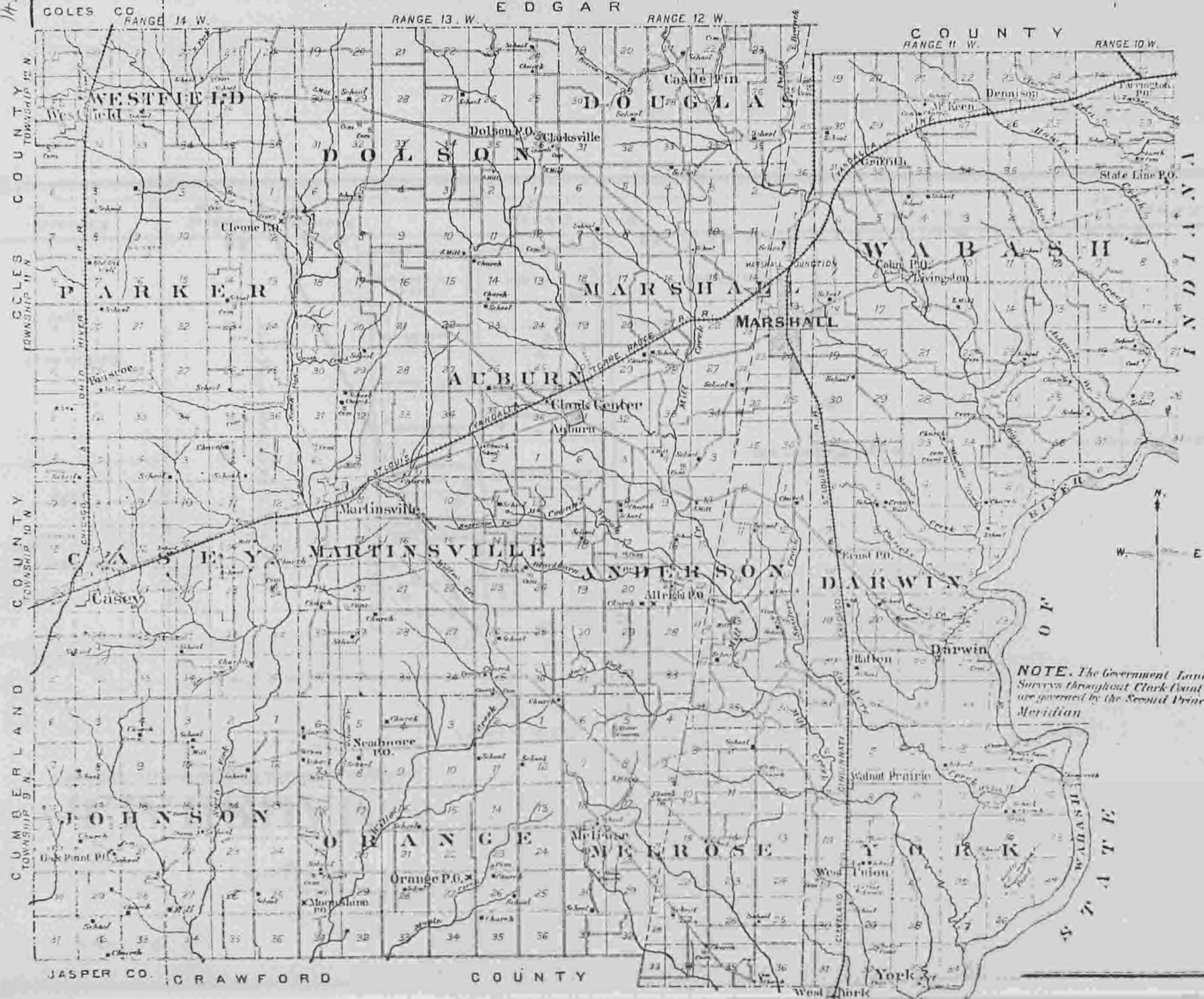




14-15  
OUTLINE  
MAP  
OF

# CLARK COUNTY ILLINOIS.

Scale 20 of an Inch to the Mile.



NOTE. The Government Land Surveys throughout Clark County are governed by the Second Principal Meridian

Julia L. Smith  
40

6. Platz  
37.50

# MARSHALL

Located on Sections 13, 14, 23 & 24 Marshall Twp. T. 111 N. R. 11 E.

J. C. Smith  
20

Julia L. Smith  
20

6. Platz

Geo. Platz  
40

J. Dawson  
40

L.M. Bradley  
12 a.

Jacob Huston  
77

G. Welsh  
21

W. Bartlett and  
S.Y. Whitlock  
54.50

John Casteel  
Est.  
37.90

Ed. Henbest  
37.90

E. Henbest  
37

John Scholfield

Ed. Harlan  
40

Florence S. Bartlett  
40

H.L. Dulaney

Ed. Howell

J.H. Miller  
10

N. Benedict  
38

Chas. Wekeman  
90

Chas. Wekeman  
135

Wm. Shoop

F. Mayer  
54

Wm. Cole  
40

Wm. Shoop  
80

R.L. Dulaney  
139.10

E. Henbest  
10.90

E. Henbest  
37

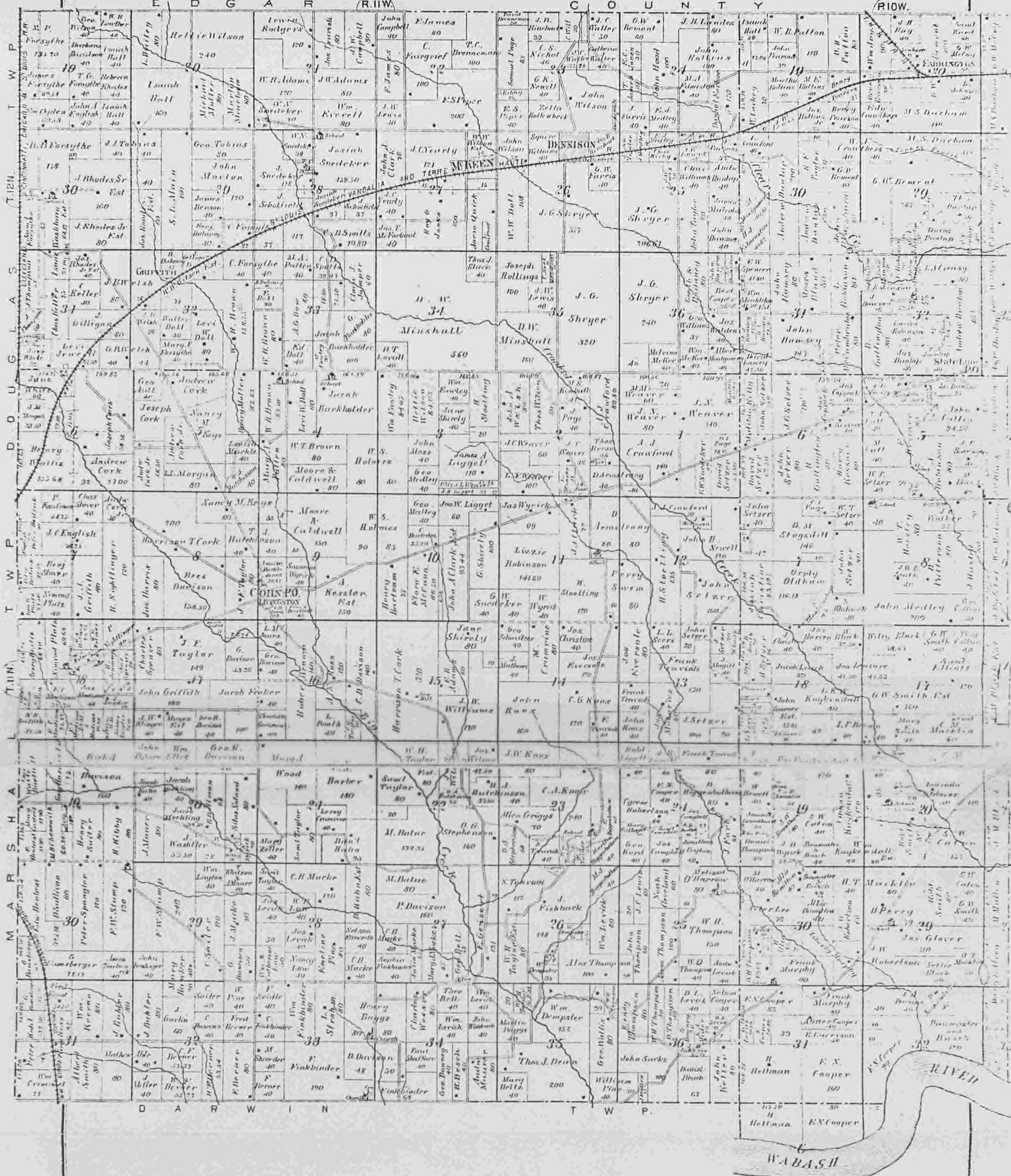


# WABASH

Scale 2 Inches to the Mile

Embracing all of TWP 11 N, R 11 W and Parts of TWPS 10, 11 & 12 N R 10 & 11 W.

of the 2<sup>nd</sup> Principal Meridian.



## Mc KEEN

LOCATED ON N.E. SEC. 27 T. 12 N. R. 11 W. WABASH TWP.

Scale 200 Ft. to an Inch



## HATTON

LOCATED ON SEC 30 DARWIN TWP.

Scale 200 Ft. 1 inch



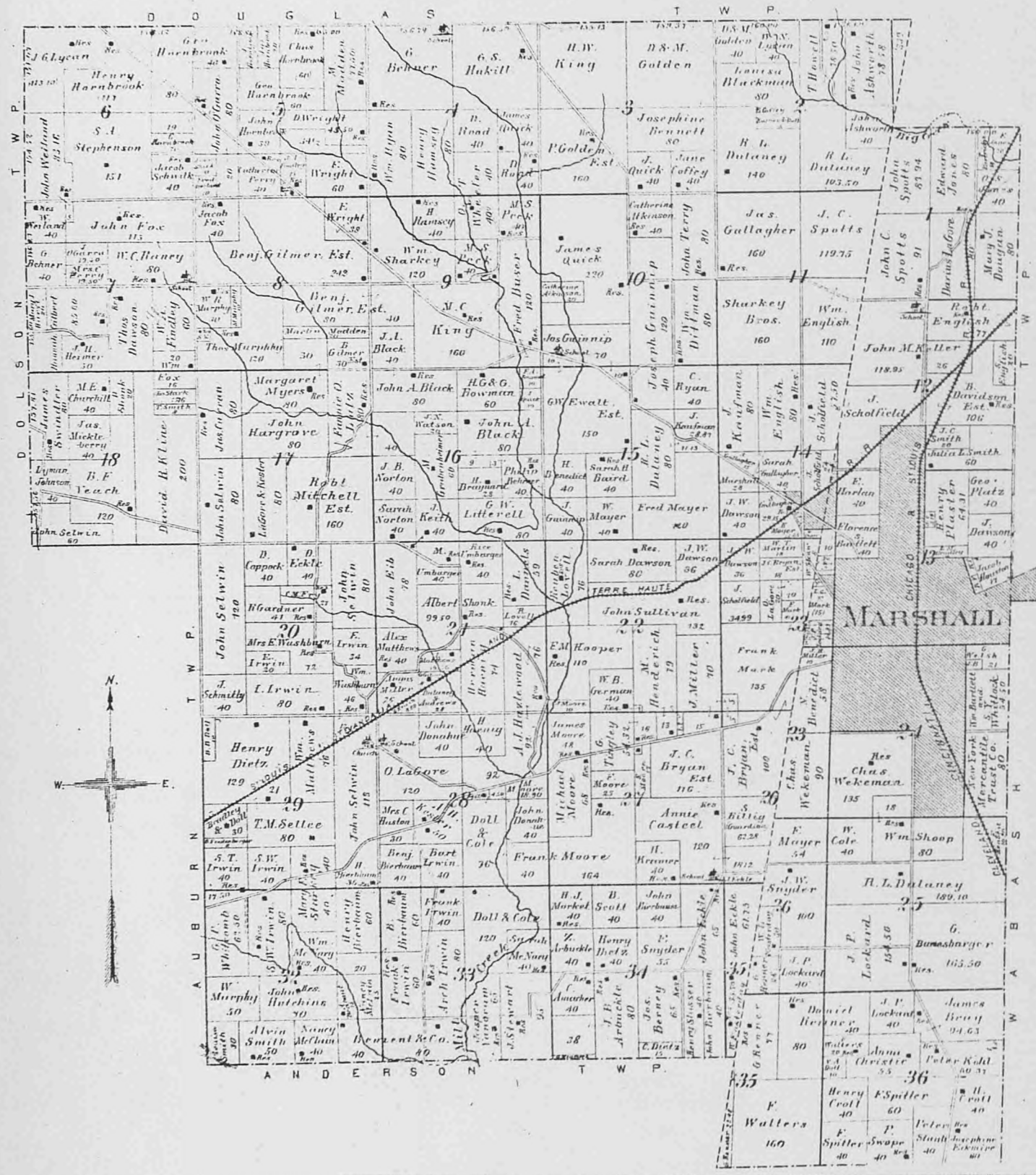
Aaron Quick

# MARSHALL

Embracing part of TWP 11 N. RANGE XII WEST

Scale 2 Inches to the Mile

of the 2<sup>nd</sup> Principal Meridian.

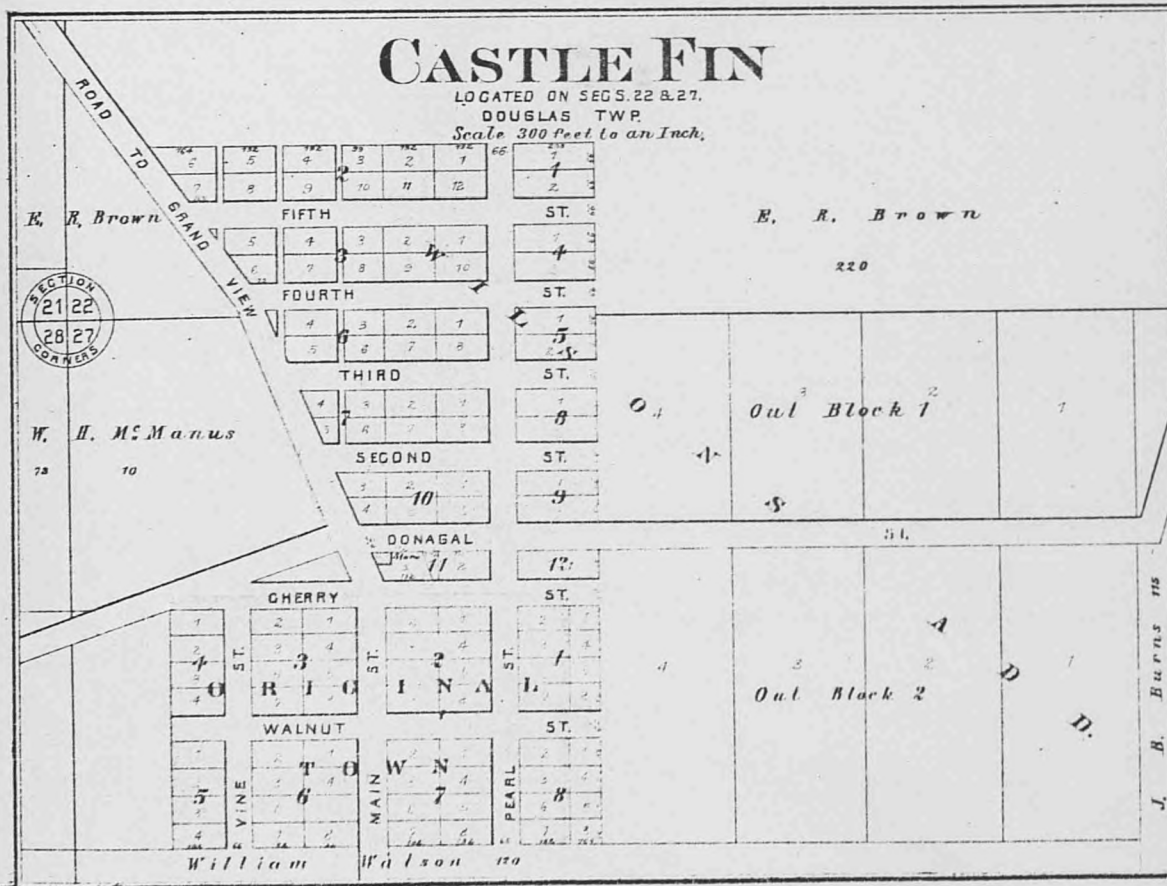
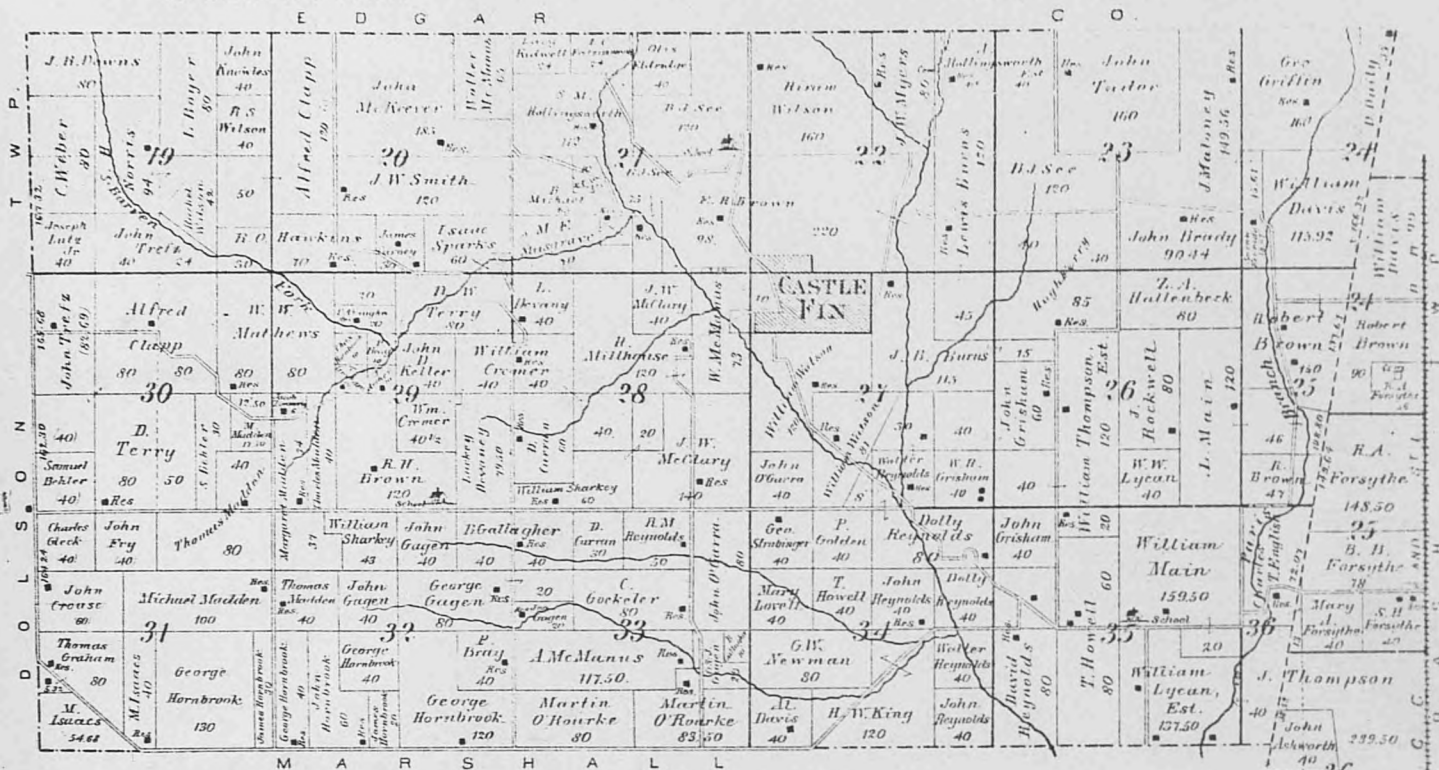




# DOUGLAS

26-27

Scale 2 Inches to the Mile Embracing the South Half of TWP 12 N RANGE XII W of the 2<sup>nd</sup> Principal Meridian.



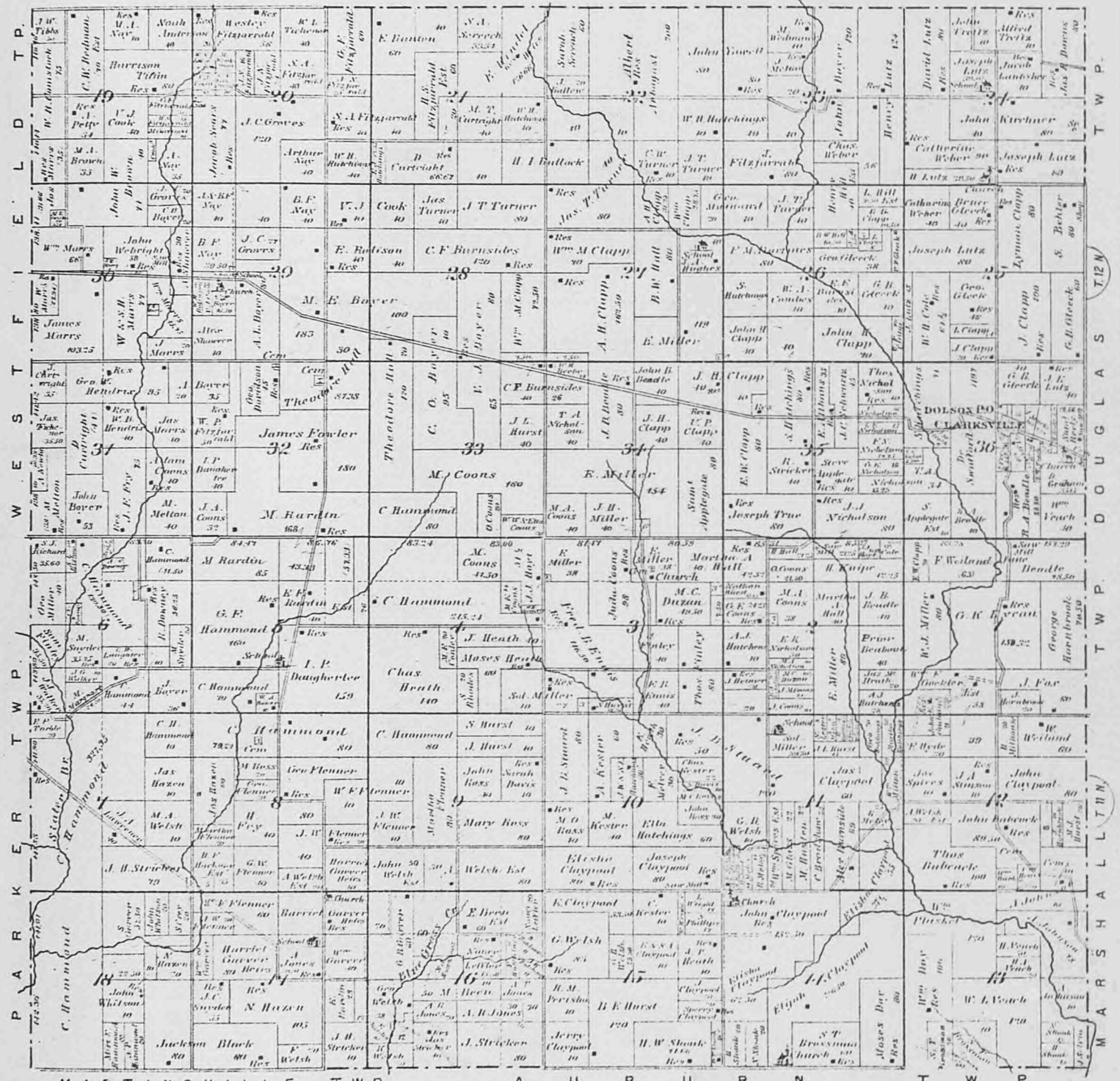
# DOLSON

Embracing Parts OF T. 11 & 12 N. R. XIII W.

Scale 2 Inches to the Mile

of the 2<sup>d</sup> Principal Meridian.

E D G A R C O U N T Y



MARTINSVILLE TWP. AUBURN TWP.



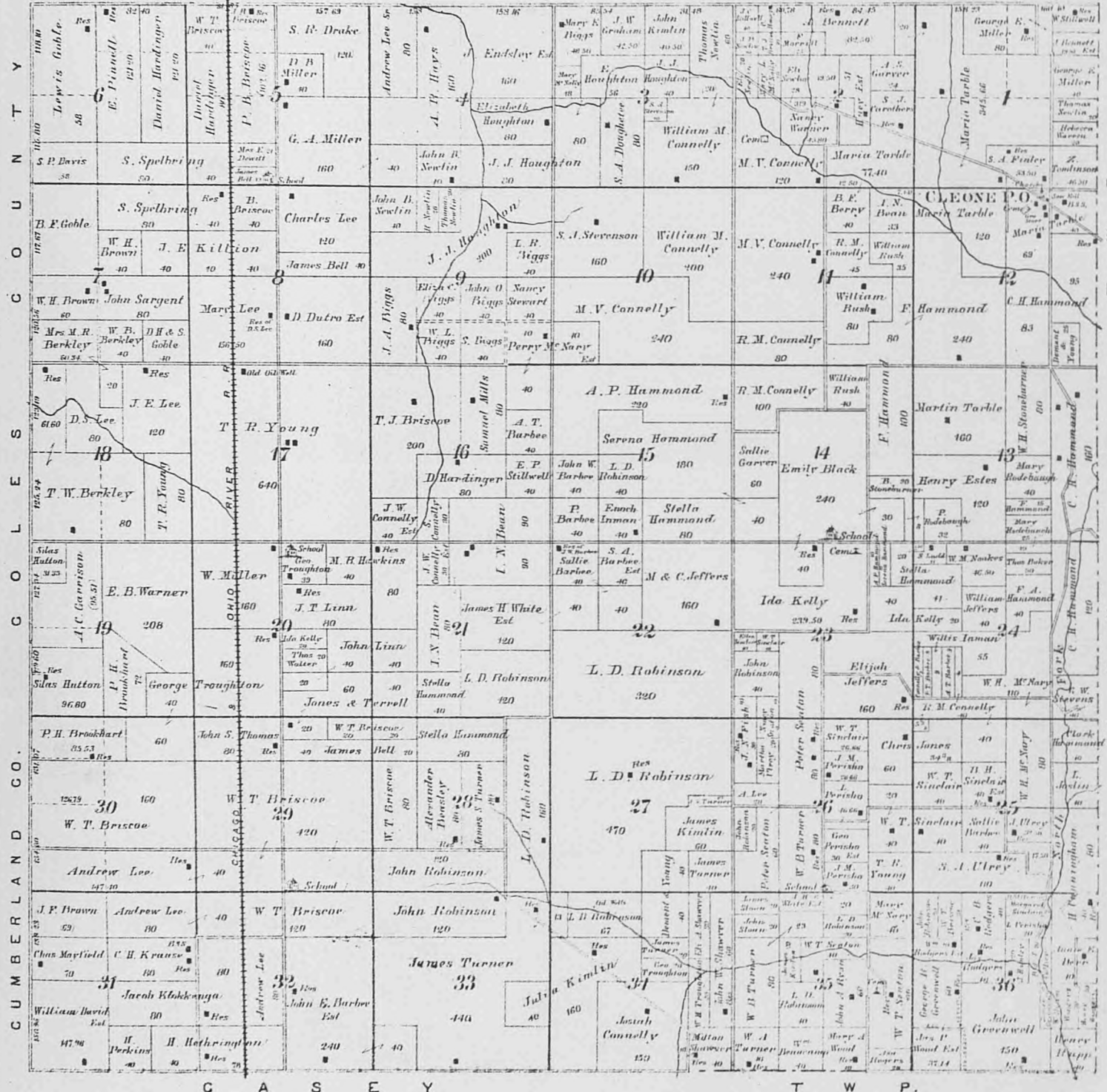
# PARKER

Scale 2 Inches to the Mile.

Township 11 North, Range XIV West

of the 2<sup>nd</sup> Principal Meridian.

W E S T F I E L D T W P.



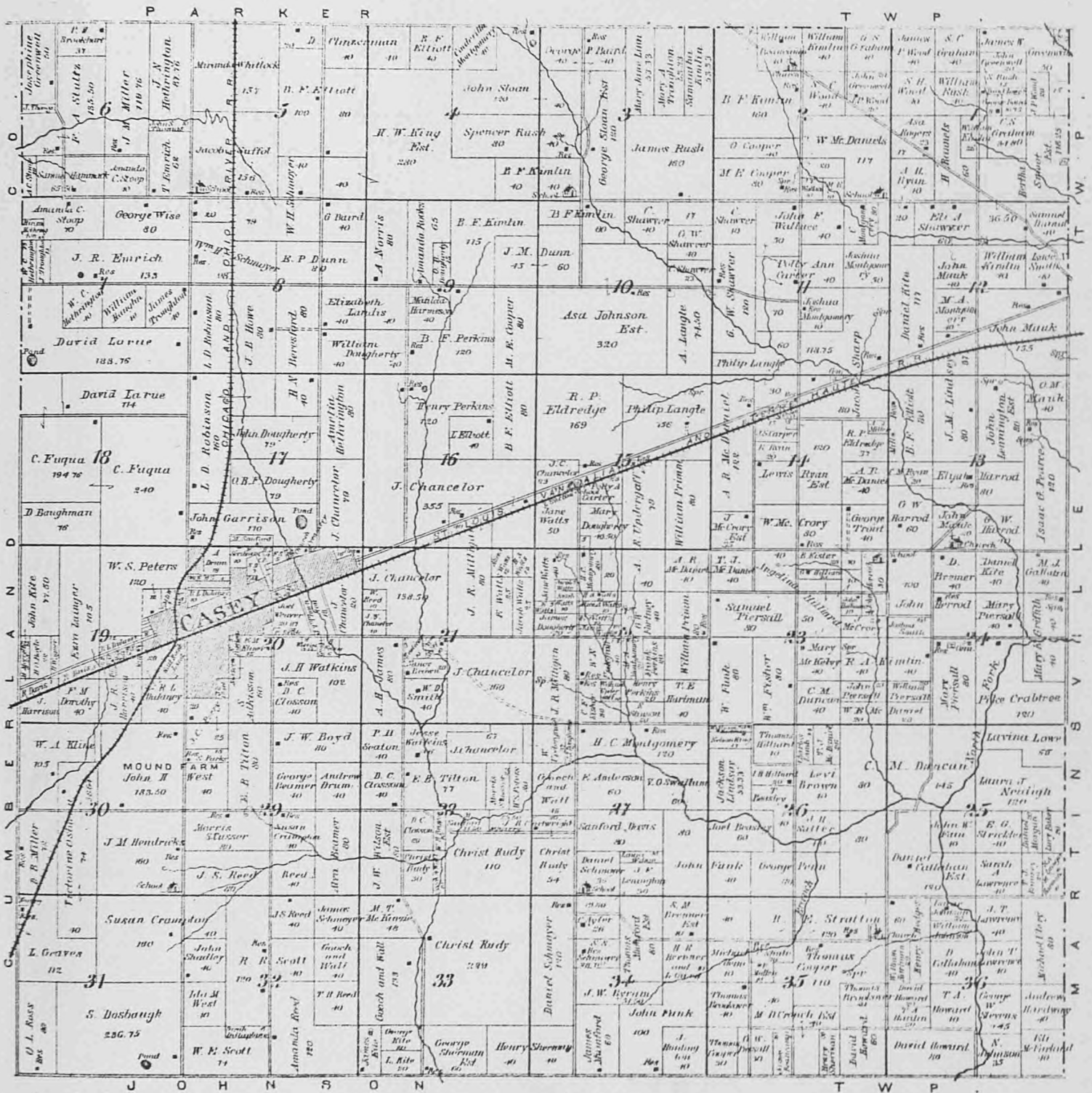
C A S E Y T W P.

# CASEY

Scale 2 Inches to the Mile.

Township 10 North, Range XIV West

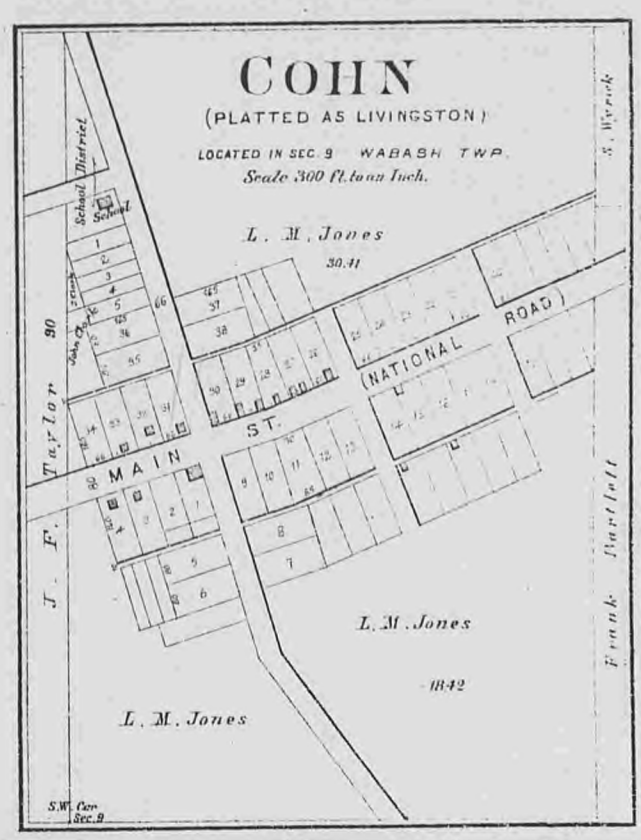
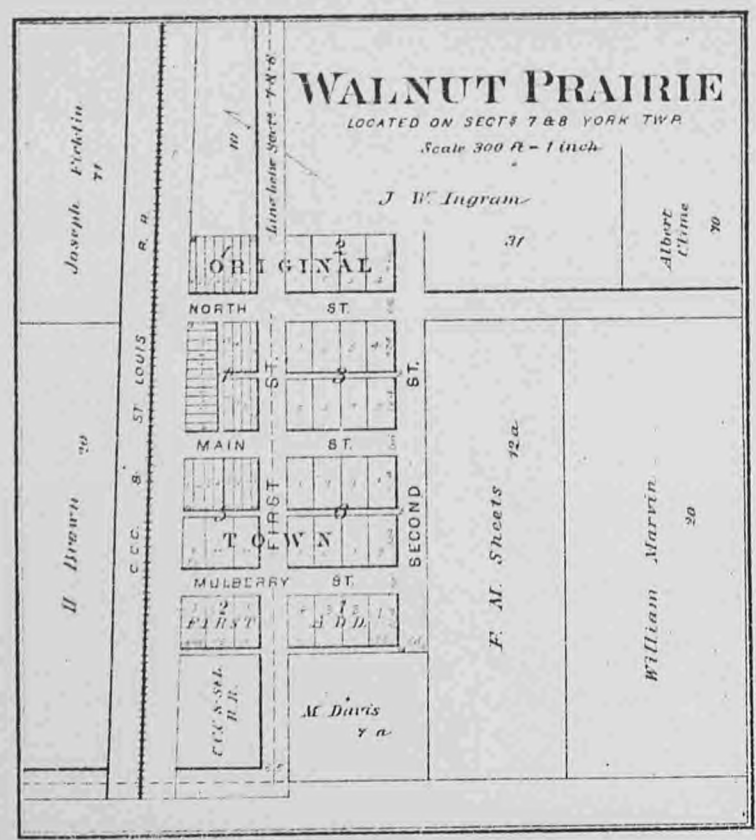
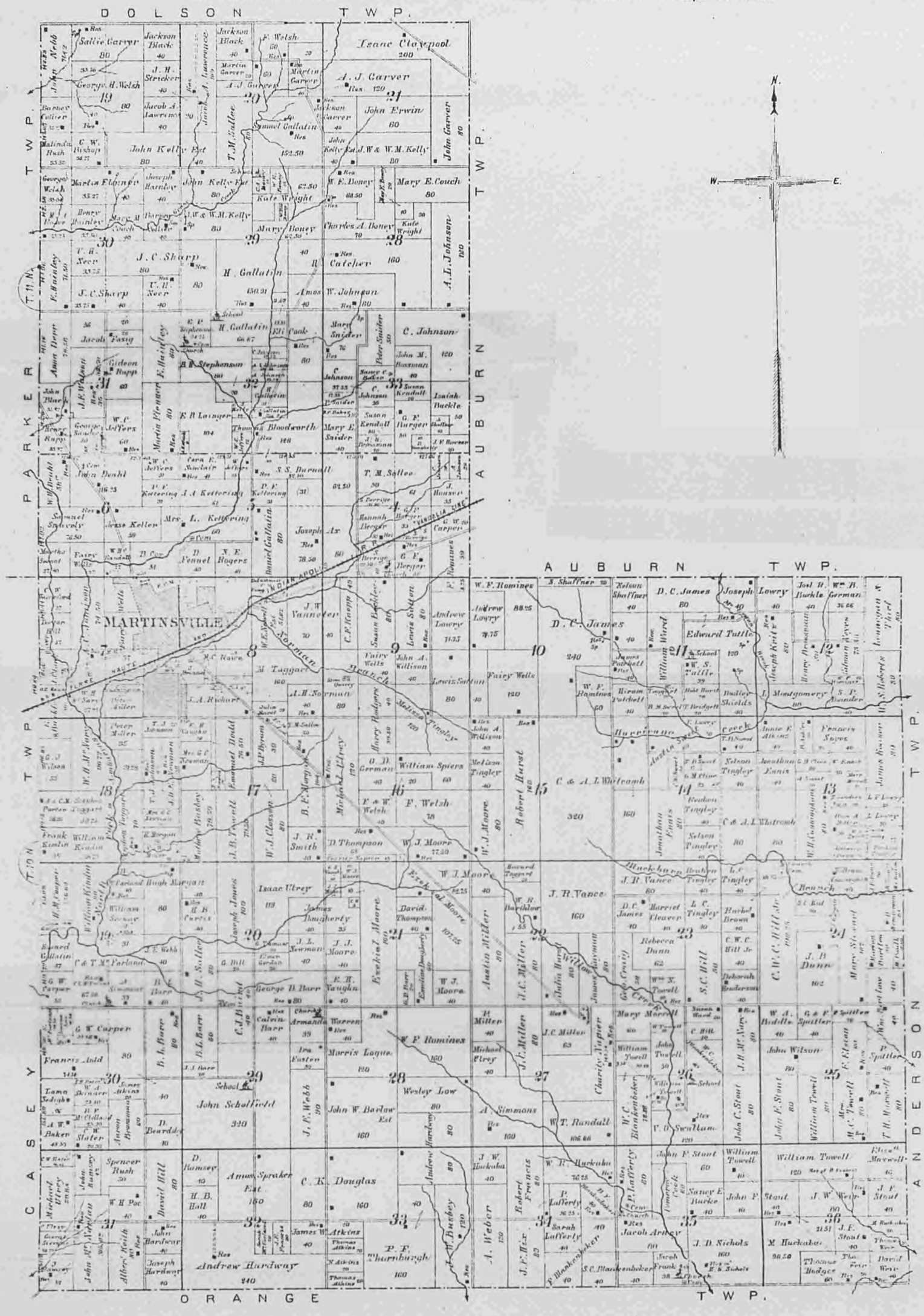
of the 2<sup>nd</sup> Principal Meridian.



# MARTINSVILLE

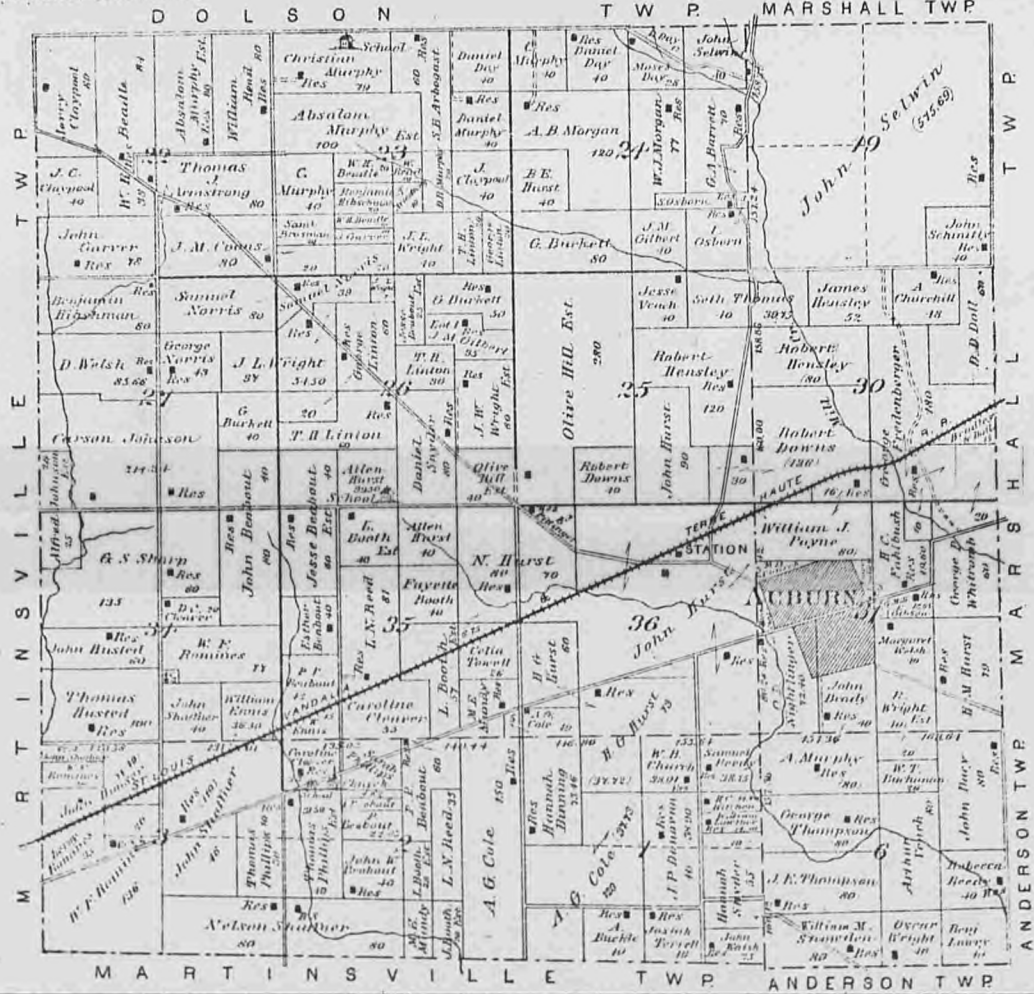
Embracing Parts of T<sup>s</sup> 10 & 11. N. R. XIII. W

Scale 2 Inches to the Mile. of the 2<sup>nd</sup> Principal Meridian.



# AUBURN

Scale 2 Inches to the Mile. Embracing Parts of T.W.P.'s 10 & 11 N.R.'s 12 & 13 W. of the 2<sup>nd</sup> Principal Meridian.

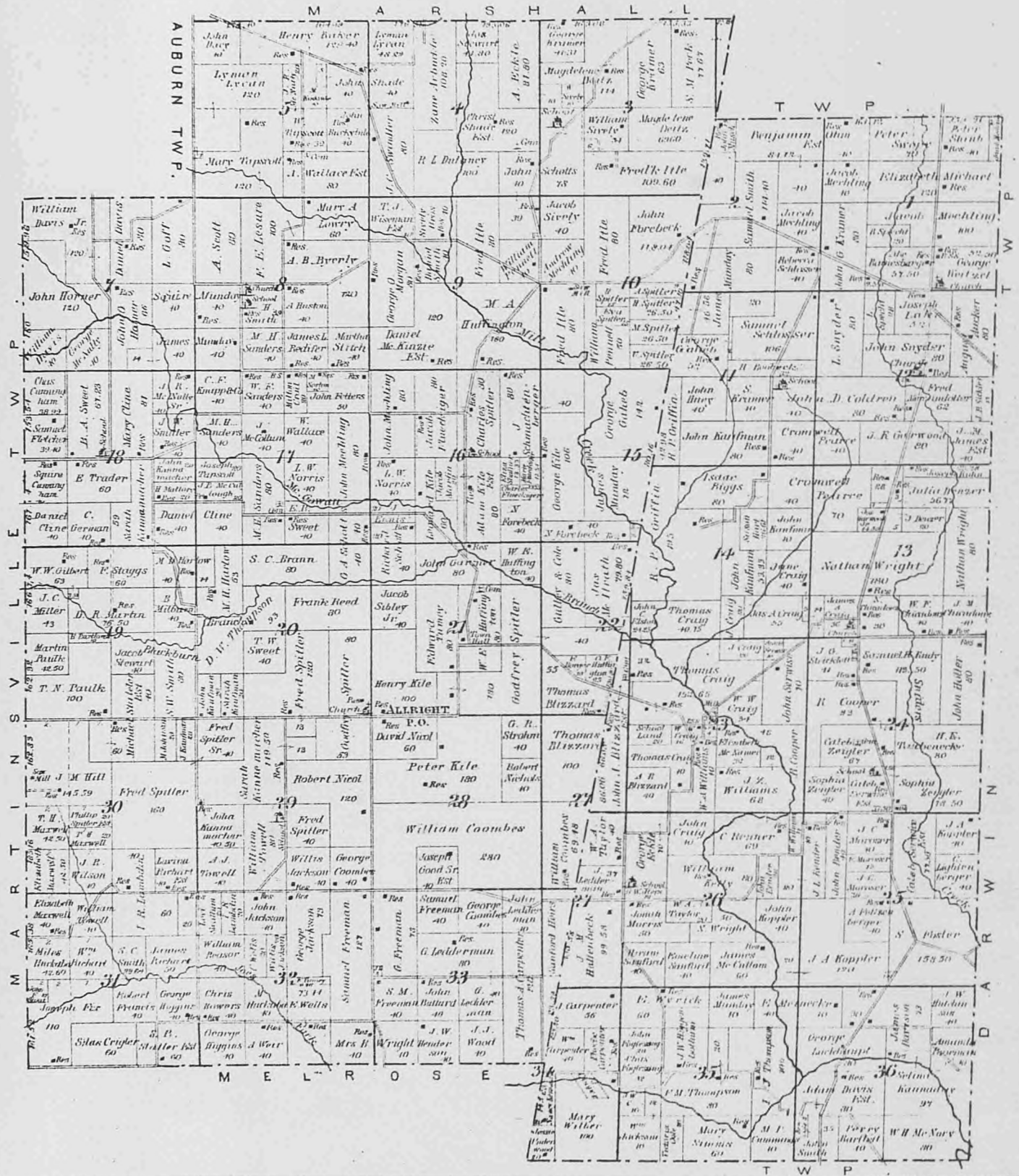


# ANDERSON

Scale 2 Inches to the Mile.

Township 10 North, Range XII West.

of the 2<sup>ND</sup> Principal Meridian





# DARWIN

Scale 2 Inches to the Mile. Embracing Parts of T. 10 N. R. 5 X & XI W. of the 2<sup>d</sup> Principal Meridian.



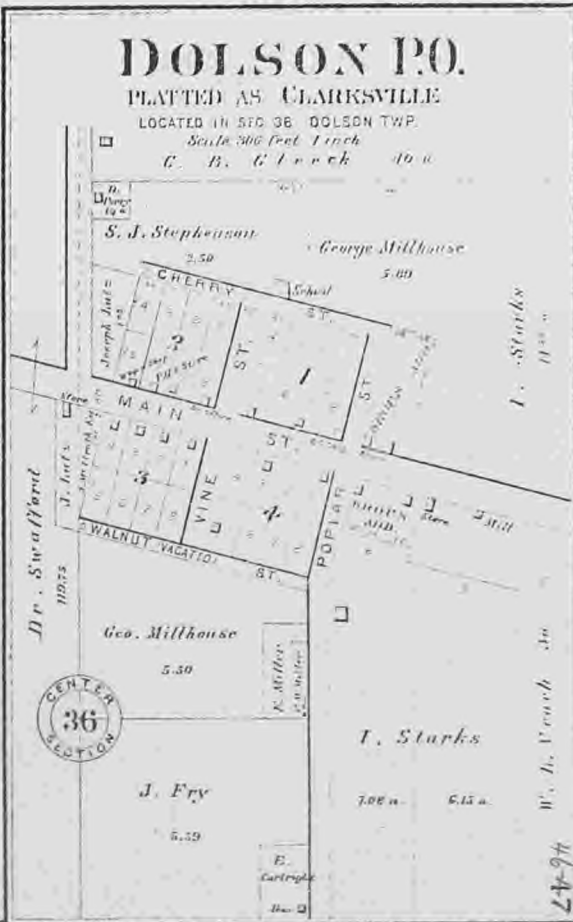
## DOLSON P.O.

PLATED AS CLARKSVILLE

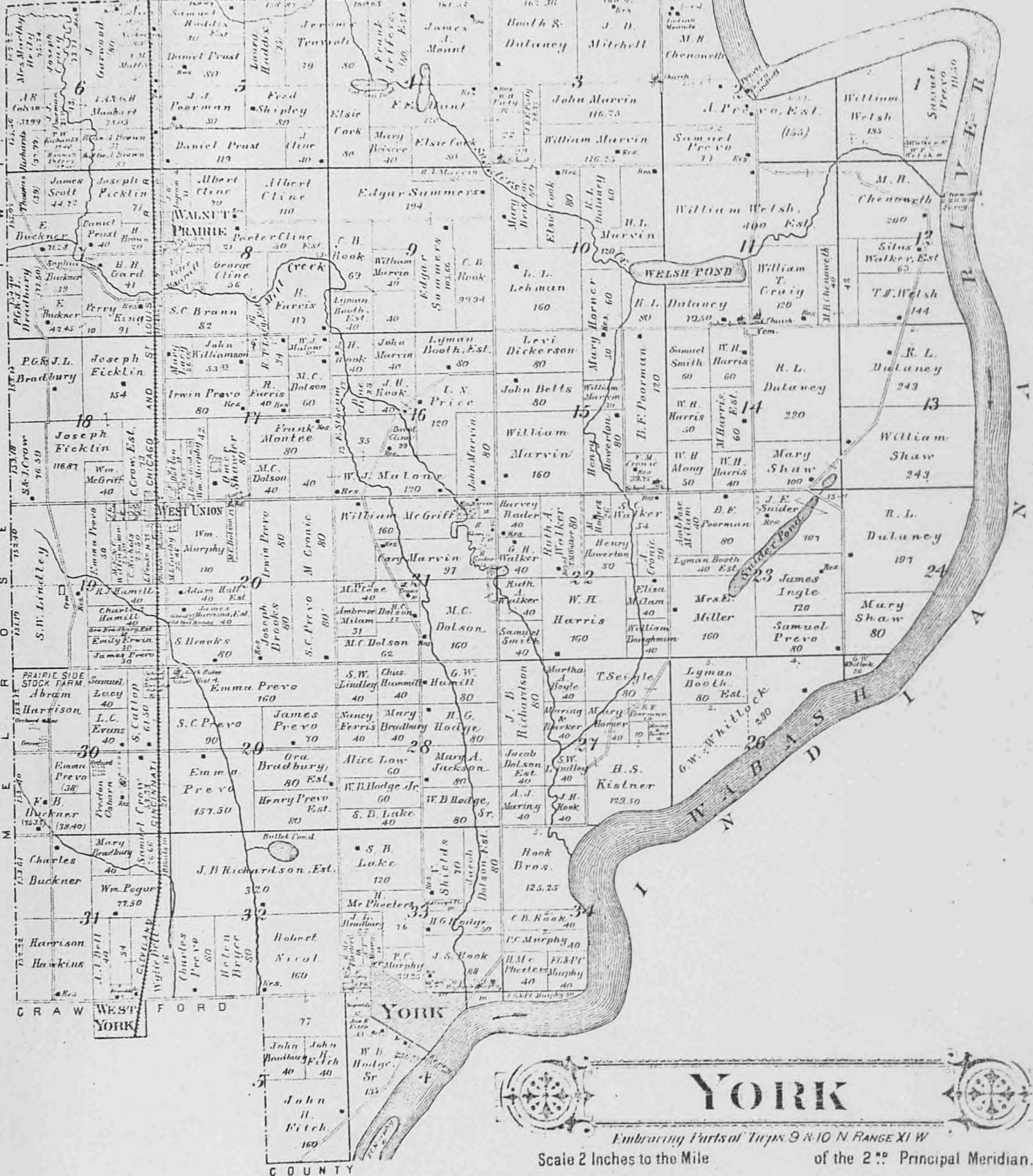
LOCATED IN SEC 36 DOLSON TWP.

Scale 300 Feet 1 Inch

C. B. Crook 1888



D A R W I N T W P



# YORK

Embracing Parts of Towns 9 & 10 N. RANGE XI W  
 Scale 2 Inches to the Mile of the 2<sup>d</sup> Principal Meridian.

C O U N T Y

# MELROSE

Scale 2 inches to the Mile.

Township 9 North, Range XII West

of the 2<sup>nd</sup> Principal Meridian.

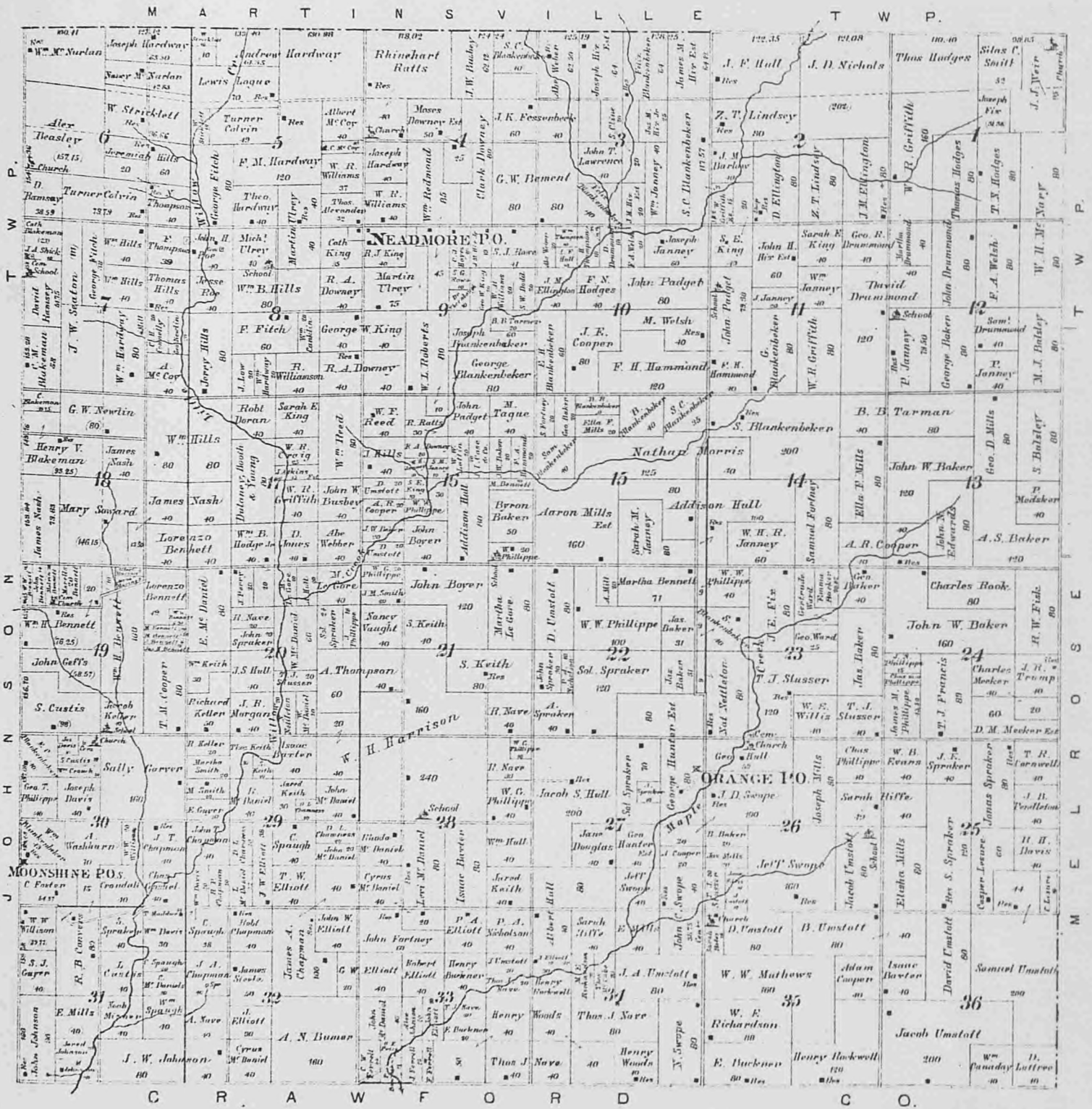


# ORANGE

Scale 2 Inches to the Mile.

Township 9 North, Range XIII West

of the 2<sup>d</sup> Principal Meridian.



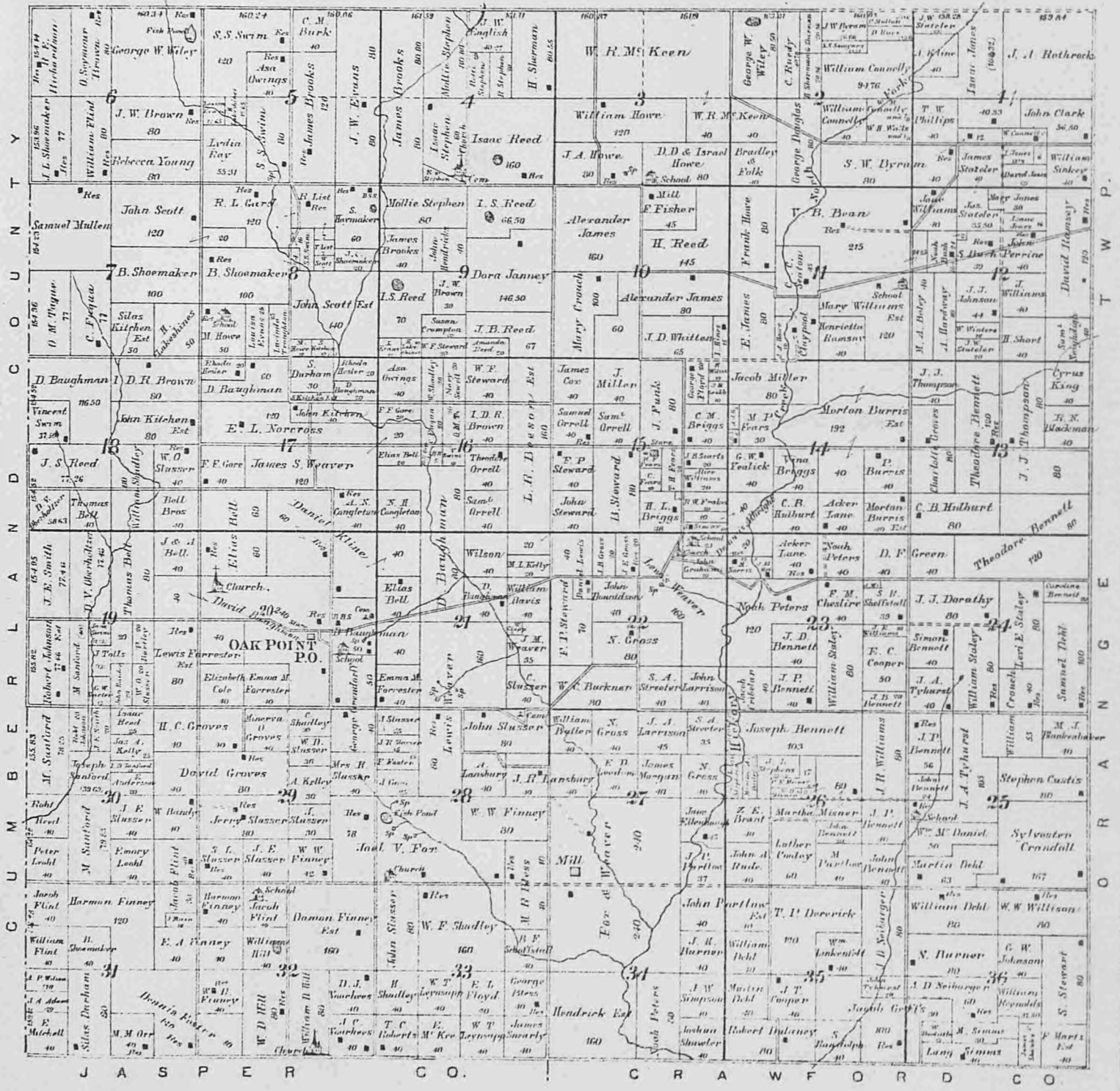
# JOHNSON

Scale 2 Inches to the Mile.

Township 9 North, Range XIV West

of the 2<sup>d</sup> Principal Meridian.

C A S E Y T W P.



J A S P E R C O . C R A W F O R D C O .

# CASEY

LOCATED ON SECTIONS 19 & 20

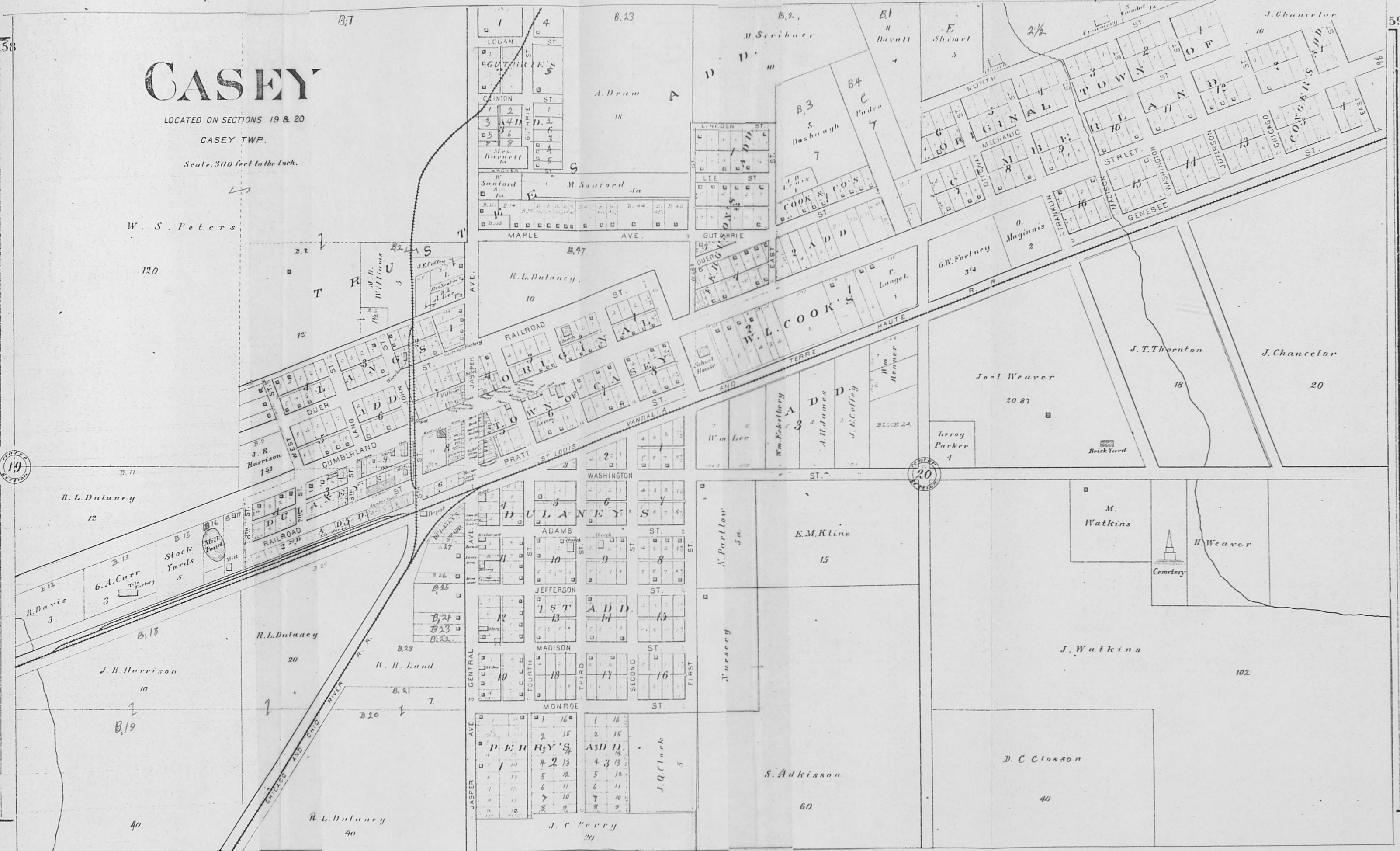
CASEY TWP.

Scale 300 feet to the Inch.

W. S. Peters

58

59



D. Swickard 81.25

# WESTFIELD

LOCATED ON SECTIONS 29, 30 & 31 WESTFIELD TWP

Scale 300 ft - 1 inch

J. T. Moore

29

J. F. Moore

30

Westfield Creamery Co

CEMETERY

SECTION ROAD BETWEEN 29 & 30

A. T. Swickard  
44.96

A. Y. Graham  
375

D. S. Vanoyck  
1



PAYSALE  
(ASO acres)

Division Line between 30 & 31

J. I.

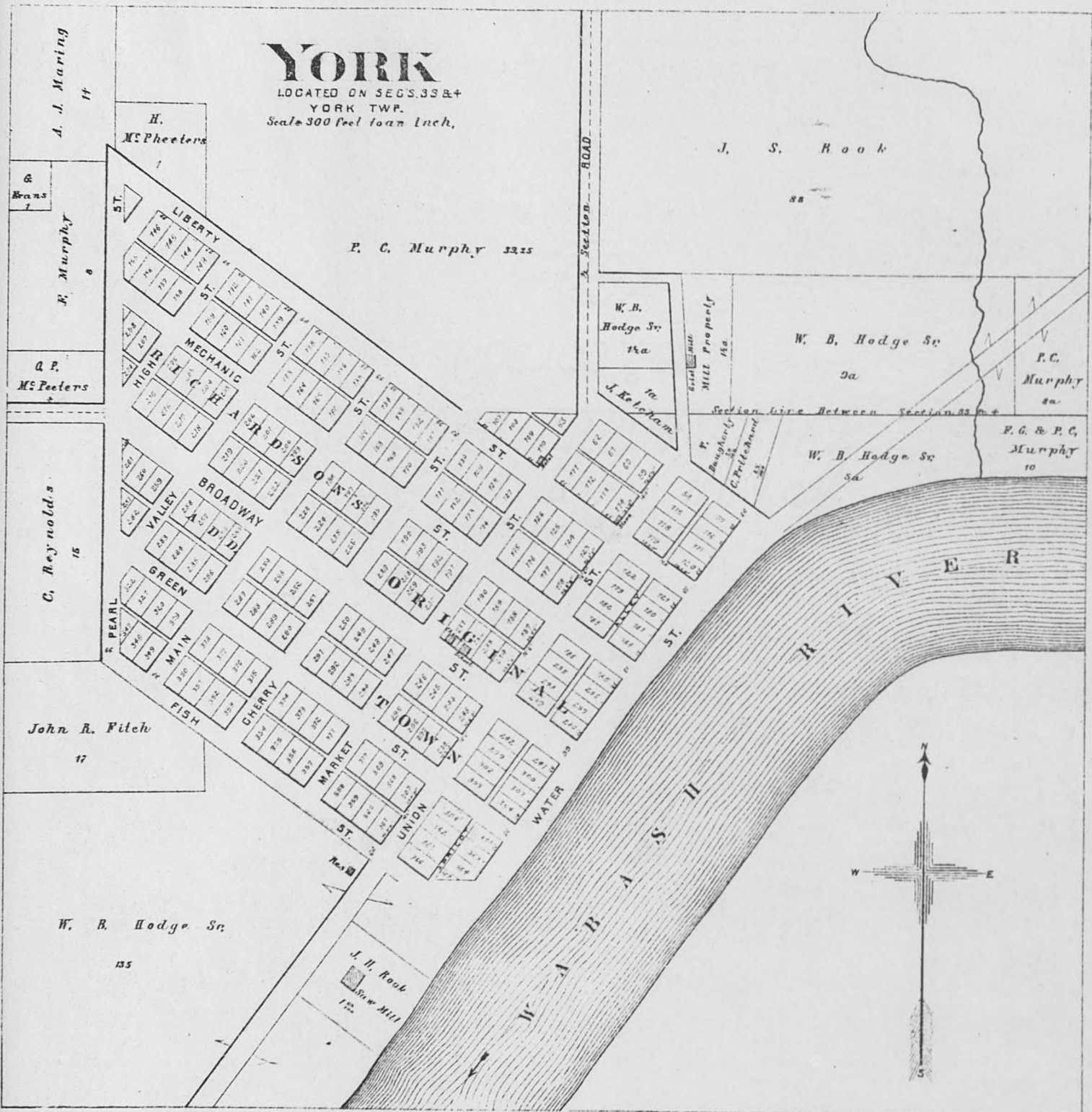
J. A. Parker

8

CHICAGO

# YORK

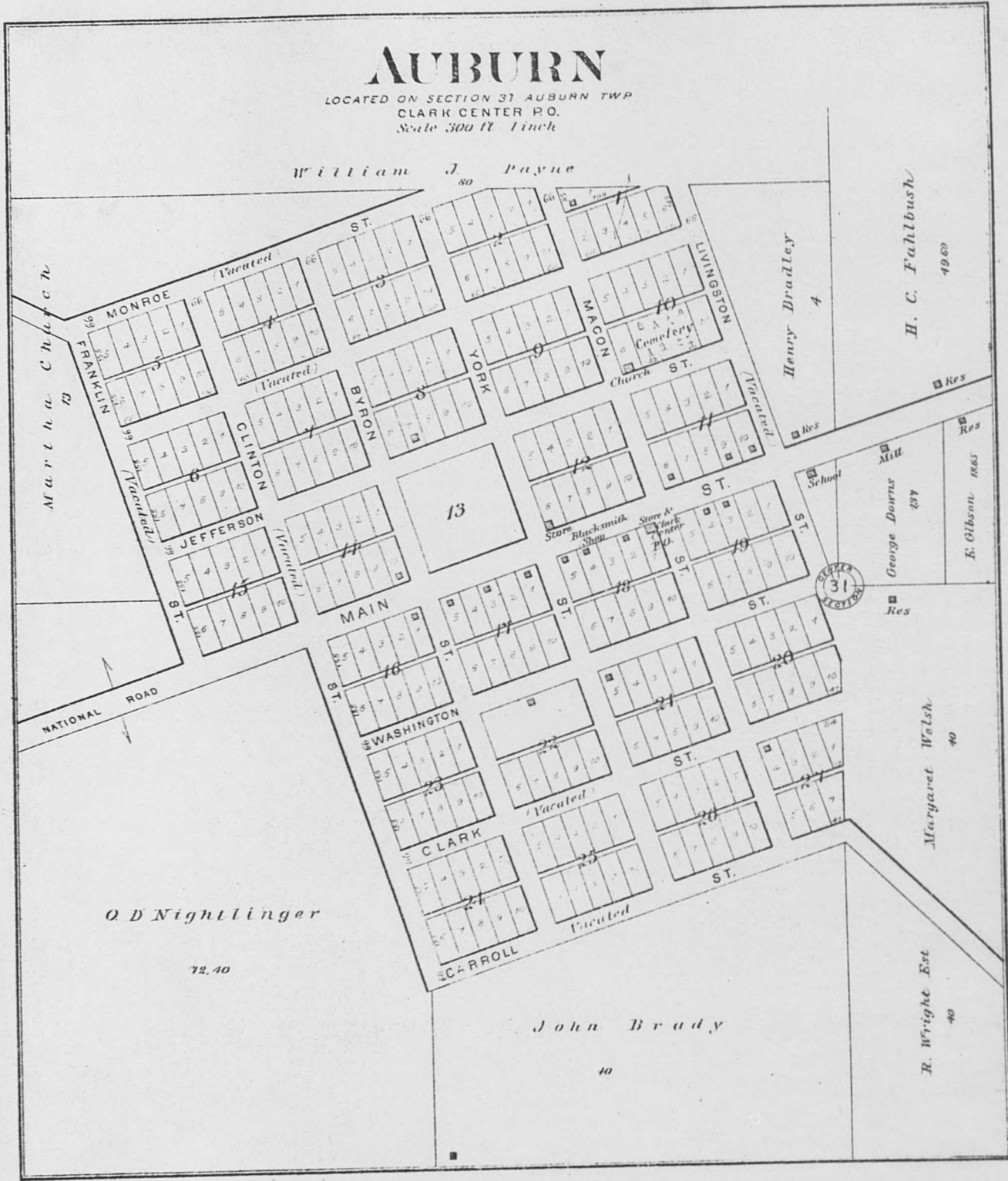
LOCATED ON SEC'S 33 & 4  
YORK TWP.  
Scale 300 feet to an Inch.





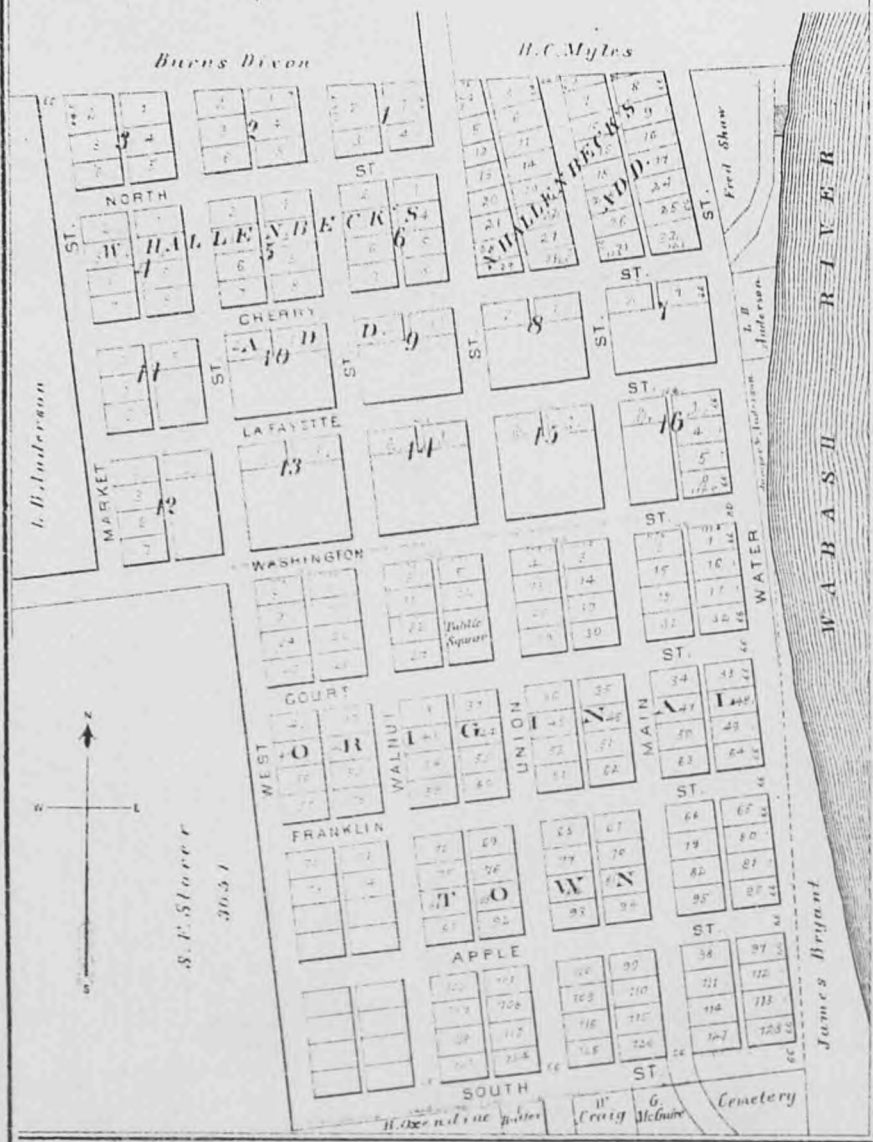
# AUBURN

LOCATED ON SECTION 31 AUBURN TWP  
CLARK CENTER P.O.  
Scale 300 ft. Inch



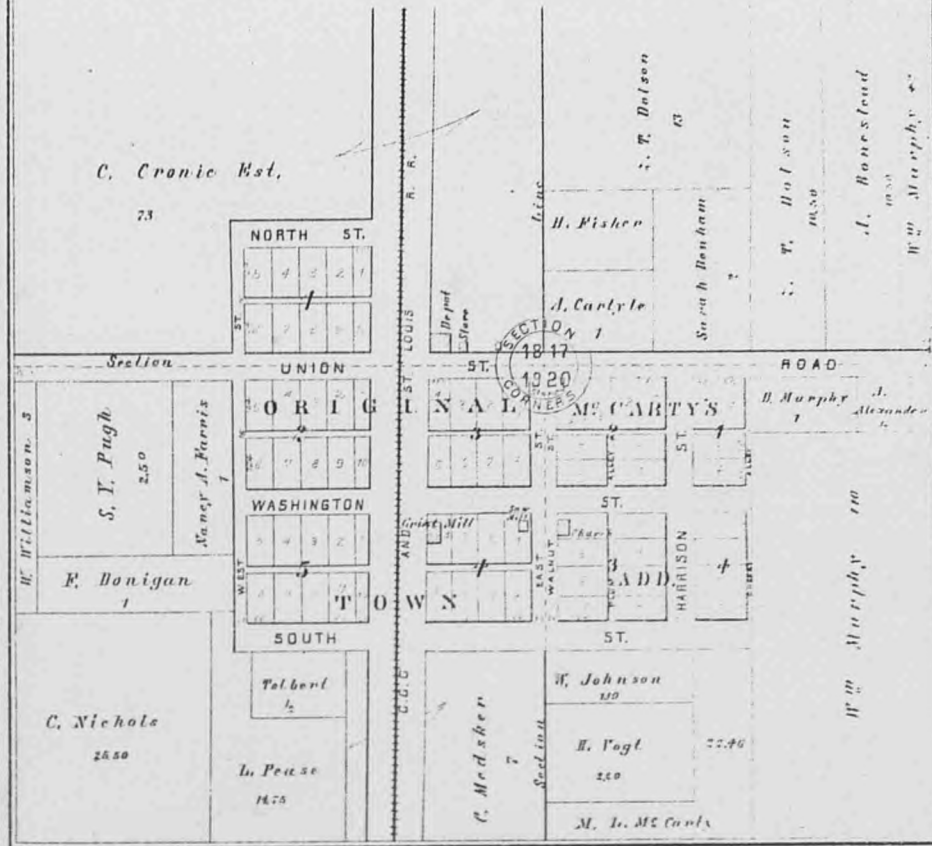
# DARWIN

LOCATED ON SEG. 27, DARWIN TWP.



# WEST UNION

LOCATED ON SEGS. 17, 18, 19 & 20  
YORK TWP.  
Scale 300 ft. to an Inch.



# ANALYSIS OF THE SYSTEM OF UNITED STATES LAND SURVEYS

COPYRIGHT, 1880.

## METES AND BOUNDS.

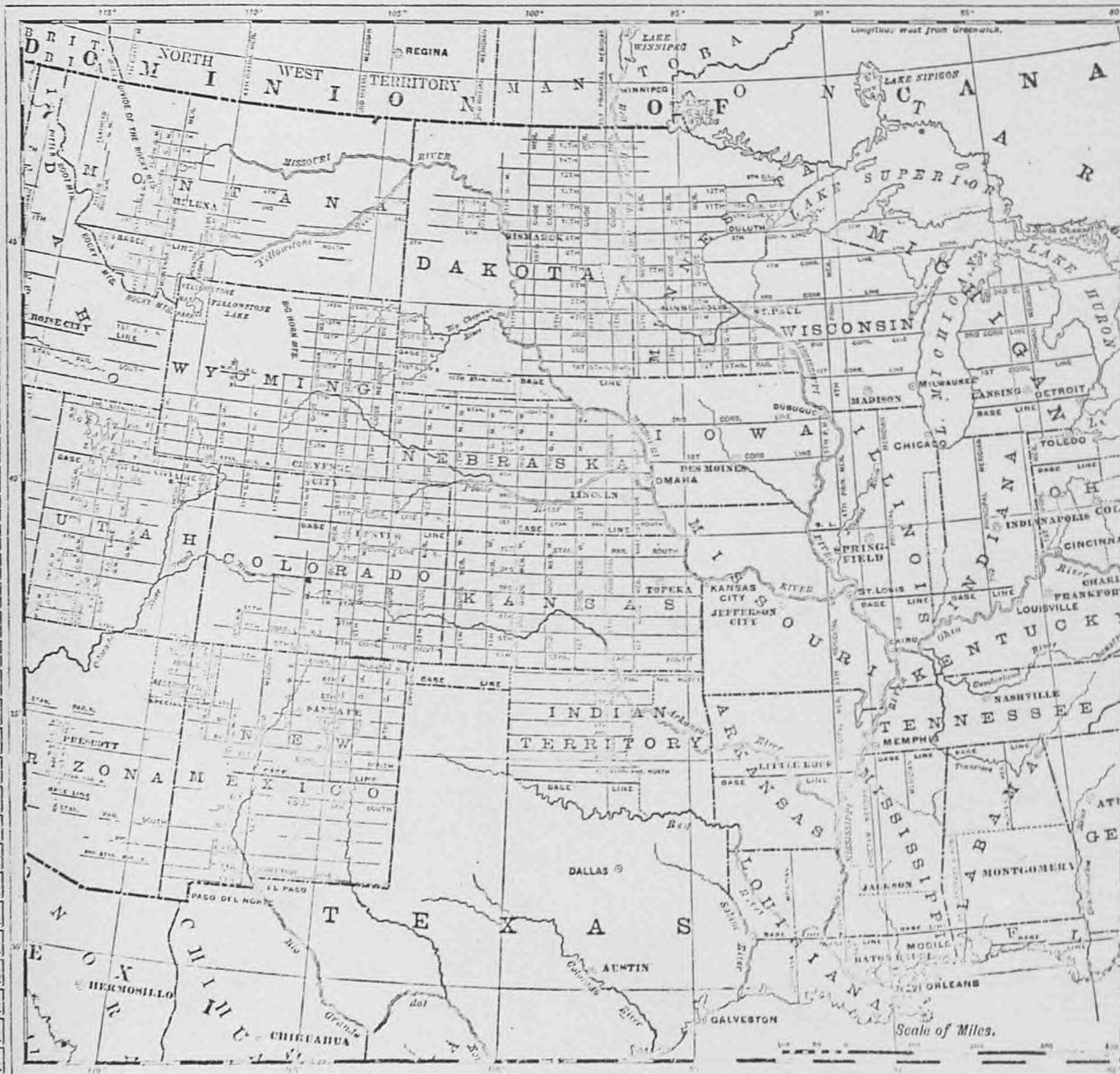
Up to the time of the Revolutionary War, or until about the beginning of the present century, land, when parcelled out, and sold or granted, was described by "Metes and Bounds," and that system is still in existence in the following States, or in those portions of them which had been sold or granted when the present plan of surveys was adopted, viz.: New York, Pennsylvania, New Jersey, Delaware, Maryland, Virginia, North and South Carolina, Georgia, Tennessee, Kentucky, Texas, and the six New England States. To describe land by "Metes and Bounds," is to have a shown land mark for a place of beginning, and then follow a line according to the compass-needle (or magnetic bearing), or the course of a stream, or track of an ancient highway. This plan has resulted in endless confusion and litigation, as land-marks decay and change, and it is a well-known fact that the compass-needle varies and does not always point due North.

As an example of this plan of dividing lands, the following description of a farm laid out by "Metes and Bounds," is given: "Beginning at a stone on the Bank of Doe River, at a point where the highway from A. to B. crosses said river (see point marked C. on Diagram 1); thence 40° North of West 100 rods to a large stump; thence 10° North of West 90 rods; thence 15° West of North 80 rods to an oak tree (see Witness Tree on Diagram 1); thence due East 150 rods to the highway; thence following the course of the highway 50 rods due North; thence 5° North of East 90 rods; thence 45° East of South 60 rods; thence 10° North of East 300 rods to the Doe River; thence following the course of the river Southwesterly to the place of beginning." This, which is a very simple and moderate description by "Metes and Bounds," would leave the boundaries of the farm as shown in Diagram 1.



## MERIDIANS AND BASE LINES.

DIAGRAM 2.



THE present system of Governmental Land Surveys was adopted by Congress on the 7th of May, 1785. It has been in use ever since and is the legal method of describing and dividing lands. It is called the "Rectangular System," that is, all its distances and bearings are measured from two lines which are at right angles to each other, viz. :- These two lines, from which the measurements are made, are the Principal Meridians, which run North and South, and the Base Lines, which run East and West. These Principal Meridians are established, with great accuracy, by astronomical observations. Each Principal Meridian has its Base Line, and these two lines form the basis or foundation for the surveys or measurement of all the lands within the territory which they control.

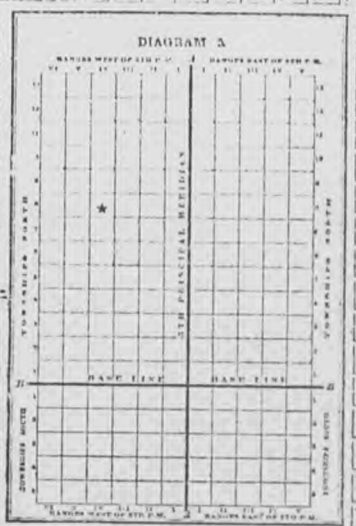
Diagram 2 shows all of the Principal Meridians and Base Lines in the central portion of the United States, and from it the territory governed by each Meridian and Base Line may be readily distinguished. Each Meridian and Base Line is marked with its proper number or name, as are also the Standard Parallels and guide (or auxiliary) Meridians.

Diagram 3 illustrates what is meant when this method is termed the "Rectangular System," and how the measurements are based on lines which run at right angles to each other. The heavy line running North and South (marked A. A.) represents the Principal Meridian. The heavy line running East and West (marked B. B.) is the Base Line. These lines are used as the starting points or basis of all measurements or surveys made in territory controlled by the 5th Principal Meridian. The same fact applies to all other Principal Meridians and their Base Lines. Commencing at the Principal Meridian, at intervals of six miles, lines are run North and South, parallel to the Meridian. This plan is followed both East and West of the Meridian throughout the territory controlled by the Meridian.

These lines are termed "Range Lines." They divide the land into strips or divisions six miles wide, extending North and South, parallel with the Meridian. Each division is called a Range. Ranges are numbered from one upward, commencing at the Meridian; and their numbers are indicated by Roman characters. For instance, the first division (or first six miles) west of the Meridian is Range I, West; the next is Range II, West; then comes Range III, IV, V, VI, VII, and so on, until the territory governed by another Principal Meridian is reached. In the same manner the Ranges East of the Meridian are numbered, the words East or West being always used to indicate the direction from the Principal Meridian. See Diagram 3.

Commencing at the Base Line, at intervals of six miles, lines are run East and West parallel with the Base Line. These are designated as Township Lines. They divide the land into strips or divisions six miles wide, extending East and West, parallel with the Base Line. This plan is followed both North and South of the Base Line until the territory governed by another Principal Meridian and Base Line is reached. These divisions or Townships are numbered from one upward, both North and South of the Base Line, and their numbers are indicated by figures. For instance: The first six mile division North of the Base Line is Township 1 North; the next is Township 2 North; then comes Township 3, 4, 5, and 6, North, and so on. The same plan is followed South of the Base Line; the Townships being designated as Township 1 South, Township 2 South, and so on. The "North" or "South" (the initials N. or S. being generally used) indicates the direction from the Base Line. See Diagram 3.

These Township and Range Lines, crossing each other, as shown in Diagram 3, form squares, which are called "Townships" or "Government Townships," which are six miles square, or as nearly that as it is possible to make them. These Townships are a very important feature in locating or describing a piece of land. The location of a Government Township, however, is very readily found when the number of the Township and Range is given, by merely counting the number indicated from the Base Line and Principal Meridian. As an example of this, Township 8 North, Range 4, West of the 5th Principal Meridian, is at once located on the square marked \* on Diagram 3, by counting eight tiers north of the Base Line and 4 tiers west of the Meridian.

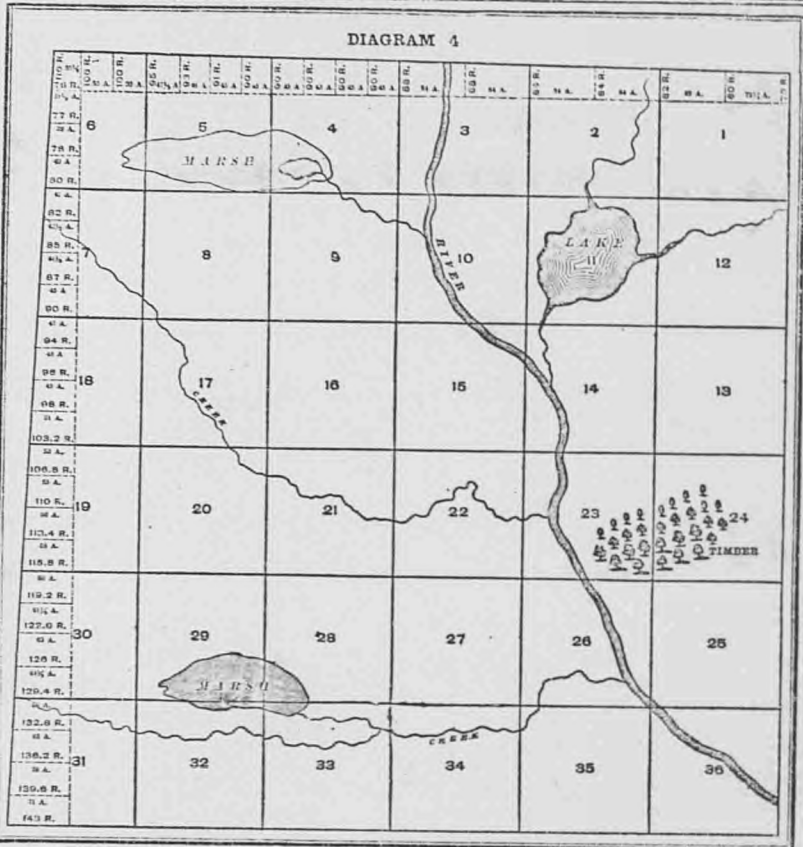


**TOWNSHIPS OF LAND.**

**T**OWNSHIPS are the largest subdivisions of land run out by the United States Surveyors. In the Governmental Surveys Township Lines are the first to be run, and a Township Corner is established every six miles and marked. This is called "Township Corner." After the Township Corners have been carefully located, the Section and Quarter Section Corners are established. Each Township is six miles square and contains 36,000 acres, or 36 square miles, as near as it is possible to make them. This, however, is frequently made impossible by: (1st) the presence of lakes and large streams; (2nd) by State boundaries not falling exactly on Township Lines; (3rd) by the convergence of Meridians or curvature of the earth's surface; and (4th) by inaccurate surveys.

Each Township, unless it is one of the exceptional cases referred to, is divided into 36 squares, which are called Sections. These Sections are intended to be one mile, or 320 rods, square and contain 640 acres of land. Sections are numbered consecutively from 1 to 36, as shown on Diagram 4. Beginning with Section 1 in the Northeast Corner, they run West to 6, then East to 12, then West to 18, and so on, back and forth, until they end with Section 36 in the Southeast Corner.

Diagram 4 shows a plat of a Township as it is divided and platted by the government surveyors. These Townships are called Government Townships or Congressional Townships, to distinguish them from Civil Townships or organized Townships, as frequently the lines of organized Townships do not conform to the Government Township lines.



**FRACTIONAL PIECES OF LAND.**

**C**ONGRESSIONAL Townships vary considerably as to size and boundaries. Mistakes made in surveying and the fact that Meridians converge as they run North cause every Township to vary more or less from the 36,040 acres which a perfect Township would contain. See Diagram 4. In arranging a Township into Sections all the surplus or deficiency of land is given to, or taken from, the North and West tiers of Sections. In other words, all Sections in the Township are made full—640 acres—except those on the North and West, which are given all the land that is left after forming the other 25 Sections.

Diagram 4 illustrates how the surplus or deficiency is distributed and the Sections it affects. It will be seen that Sections 1, 2, 3, 4, 5, 6, 7, 18, 19, 30 and 31, are the "Fractional Sections," or the Sections which are affected if the Township overruns or falls short. Inside of these Fractional Sections, all of the surplus or deficiency of land (over or under 640 acres) is carried to the "forties" or "eighties" that touch the Township Line. These pieces of land are called "Fractional Forties" or "Fractional Eighties," as the case may be. Diagrams 4 and 6 show the manner of marking the acreage and outlining the boundaries of these "Fractions."

Diagram 6 illustrates how the surplus or deficiency of land inside of these Sections is distributed and which "forties" or "eighties" it affects. From this arrangement it will be seen that in any Section that touches the North or West Township Lines, the Southeast Quarter may be full—160 acres—while another quarter of the same Section may be much larger or smaller. Frequently these fractional "forties" or "eighties" are lotted as shown in Diagram 6. They are always described as fractional tracts of land, as the "fractional S. W. 1/4 of Section 6," etc. Of course those portions of these Sections which are not affected by these variations are described in the usual manner—as Southeast 1/4 of Section 6. As a rule Townships are narrower at the North than at the South side. The Meridians of Longitude (which run North and South) converge as they run North and South from the Equator. They begin at the Equator with a definite width between them and gradually converge until they all meet at the poles. Now, as the Range lines are run North and South, it will at once be seen that the convergence of Meridians will cause every Congressional Township (North of the Equator) to be narrower at its North than at its South side, as stated. See Diagram 4. In addition to this fact, mistakes of measurement are constantly and almost unavoidably made

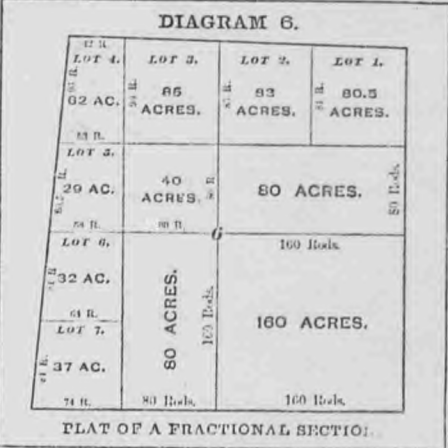
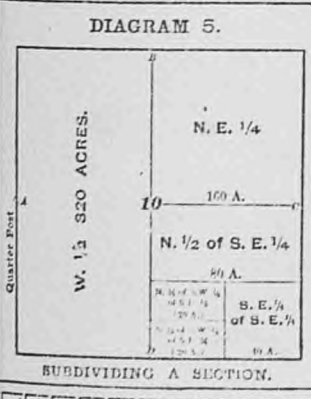
**SECTIONS OF LAND.**

**D**IAGRAM 5 illustrates how a section may be subdivided, although the Diagram only gives a few of the many subdivisions into which a section may be divided. All Sections (except fractional Sections) are supposed to be 320 rods, or one mile, square and therefore contain 640 acres—a number easily divisible. Sections are subdivided into fractional parts to suit the convenience of the owners of the land. A half-section contains 320 acres; a quarter-section contains 160 acres; half of a quarter contains 80 acres, and quarter of a quarter contains 40 acres, and so on. Each piece of land is described according to the portion of the section which it embraces—as the Northeast quarter of Section 10; or the Southeast quarter of the Southeast quarter of Section 10. Diagram 5 shows how many of these subdivisions are platted, and also shows the plan of designating and describing them by initial letters as each parcel of land on the Diagram is marked with its description.

As has already been stated, all Sections (except Fractional Sections which are explained elsewhere) are supposed to contain 640 acres, and even though mistakes have been made in surveying, as is frequently the case, making sections larger or smaller than 640 acres, the Government recognizes no variation, but sells or grants each regular section as containing 640 acres "more or less."

The Government Surveyors are not required to subdivide sections by running lines within them, but they usually establish Quarter Posts on Section Lines on each side of a section at the points marked A, B, C, and D on Diagram 5.

After establishing Township corners, Section Lines are the next to be run, and section corners are established. When these are carefully located the Quarter Posts are located at points nearly equidistant between Section Corners as possible. These corners when established by Government Surveyors cannot be changed, even though it is conclusively shown that mistakes have been made which cause some sections or quarter sections to be either larger or smaller than others. The laws, however, of all the States provide certain rules for local surveyors to follow in dividing Sections into smaller parcels of land than has been outlined in the Governmental surveys. For instance, in dividing a quarter section into two parcels, the distance between the Government Corners is carefully measured and the new post is located at a point equidistant between them. This plan is followed in running out "eighties," "forties," "twenties," etc. In this way, if the Government division overruns or falls short, each portion gains or loses its proportion. This is not the case, however, with Fractional Sections along the North or West sides of a Township, or adjoining a lake or large stream.



# HISTORICAL DIRECTORY OF CLARK COUNTY, ILLINOIS.

NAME	BUSINESS	TOWNSHIP OF VILLAGE	NO.	POST OFFICE.	YEAR OF BIRTH.	NATIVITY.	YEAR CAME TO ILL.
Adkinson, S.	Livery and Feed Stables	Casey	12	Casey	1826	Kentucky	1878
Alexander, E. R.	Farmer	Melrose	9	Walnut Prairie	1832	"	1874
Allison, Jos. L.	Attorney and Pension Agent	Marshall	12	Marshall	1823	"	1849
Amacher, C.	Farmer	Marshall	34	"	1832	Indiana	1864
Anderson, J. L.	General Merchant	Darwin	23	Darwin	1834	Illinois	1844
Arbogast, S. B.	Farmer and Breeder of Hambletonian Horses	Auburn	23	Clark Center	1860	Missouri	1869
Arbuckle, Esta.	Farmer	Marshall	34	Marshall	1832	Illinois	1832
Archier, Burns	Deputy County Treasurer	"	"	"	1829	"	1829
Archers, John R.	Implement Dealer	"	"	"	1841	Indiana	1848
Atkins, Jas. W.	Farmer and Stock Raiser	Martinsville	32	Martinsville	1847	Illinois	1850
Auer, John	Farmer and Stock Raiser	Darwin	31	Marshall	1820	Germany	1873
Baker, Wm.	Farmer and Stock Raiser	Anderson	5	Harrison	1848	Illinois	1848
Baker, Henry	Farmer and Stock Raiser	Anderson	5	Marshall	1835	Ohio	"
Baker, Dr. J. W.	Physician and Surgeon	Melrose	5	Melrose	1831	Illinois	1831
Ballard, W. H.	Proprietor Hotel	Martinsville	22	Martinsville	1842	Ohio	1838
Bamsberger, G.	Farmer and Stock Raiser	Marshall	25	Marshall	1835	Germany	1854
Barbee, J. W.	Farmer and Stock Raiser	Parker	22	Martinsville	1867	Illinois	1867
Barbee, Taylor	Farmer and Stock Raiser	Westfield	27	Westfield	1846	"	1846
Barbee, A. M.	Farmer and Stock Raiser	"	"	"	1850	"	1850
Bartlett, Fred. J.	Att'y and Master in Chancery	Marshall	27	Marshall	1867	"	1867
Bartlett, Jefferson	Farmer	Melrose	16	Melrose	1857	"	1857
Bartness, G. F.	Postmaster and Manager for Hammond & Best, Merchants	Cleone	12	Cleone	1848	"	1848
Bartram, Henry	Farmer and Stock Raiser	Wabash	10	Cohn	1830	Germany	1838
Bassett, Mrs. Anna	Farmer and Stock Raiser	Marshall	29	Marshall	1846	Canada	1860
Baughman, D.	Farmer, Merchant & Postmaster	Johnson	12	Oak Point	1820	Ohio	1841
Beabout, John	Farmer	Auburn	34	Martinsville	1829	"	1846
Beabout, P. P.	Farmer	"	"	"	1842	"	1846
Beadle, E. A.	Farmer	Dolson	36	Dolson	1837	Indiana	1846
Beale, J. B.	Retired Farmer	"	"	"	1812	Kentucky	1843
Bean, L. N.	Farmer	Parker	21	Casey	1829	N. C.	1834
Bean, V. B.	Farmer	Johnson	11	Martinsville	1839	Illinois	1839
Beard, Wesley	Farmer	Darwin	9	Eraut	1854	"	1854
Beasley, Alex.	Farmer	Parker	28	Casey	1868	"	1868
Behler, Samuel	Farmer	Dolson	19	Dolson	1819	Germany	1844
Behner, G.	Farmer	Marshall	4	Marshall	1830	Penna.	1841
Bell, Ira J.	County Surveyor	"	"	"	1861	Iowa	1866
Bell, A. E.	"	Casey	18	Casey	1863	Indiana	1871
Bell, Williams	Farmer	Johnson	20	"	1817	"	1871
Bell, James	Farmer	"	"	"	1859	"	1871
Bell, C.	"	"	"	"	1864	"	1871
Bell, Mrs. E.	Retired	"	"	"	1830	Penna.	1871
Bennett, T.	Farmer	"	"	"	1841	Ohio	1854
Bennett, Alfred	Farmer	Parker	2	Cleone	1862	Illinois	1862
Bennett, J. G.	Farmer	Westfield	23	Westfield	1832	"	1832
Bennett, D. M.	Farmer	"	"	"	1832	"	1832
Bennett, W. H.	Farmer	Orange	19	Moonsline	1844	"	1844
Besser, Wm. T.	Miller	Marshall	13	Marshall	1842	"	1842
Bierbaum, Henry	Farmer and Stock Raiser	"	"	"	1842	Ohio	1857
Bierbaum, Benj.	Farmer and Stock Raiser	"	"	"	1857	Illinois	1857
Black, Perry	Farmer and Stock Raiser	Parker	23	Martinsville	1859	"	1859
Black, Mrs. Emily	"	"	"	"	1864	"	1864
Blair, Robert	Farmer and Prop. Stone Quarry	Darwin	20	Darwin	1833	Kentucky	1852
Blankebaker, W. C.	Farmer	Martinsville	26	Martinsville	1833	Illinois	1853
Blankebaker, Wm.	Postmaster and Farmer	Orange	30	Moonsline	1844	Indiana	1867
Block, John A.	Farmer	Marshall	16	Marshall	1824	Ohio	1839
Boney, W. E.	Farmer and Breeder of Fine Stock	Martinsville	28	Martinsville	1845	"	1839
Booth, Edwin	Lumber Merchant	Marshall	12	Marshall	1838	Illinois	1838
Booth, Mrs. F. A.	"	"	"	"	1832	"	1838
Bradley, Dr. Robert	Physician and Surgeon	"	"	"	1843	Ohio	1852
Bradbury, J. L.	Merchant and Postmaster	York	18	York	1832	Illinois	1877
Briscoe, Chas. B.	Livery	Marshall	12	Marshall	1868	"	1868
Briscoe, J. B.	Retired	Parker	5	Westfield	1817	Kentucky	1835
Briscoe, W. L.	Farmer	Westfield	28	"	1847	Illinois	1847
Brookhart, P. H.	Farmer	Parker	30	Casey	1833	Kentucky	1839
Brooks, Joseph	Farmer	York	23	West Union	1842	Illinois	1842
Brown, W. B.	Farmer	Wabash	33	McKeon	1843	Illinois	1843
Brown, J. P.	Druggist	Casey	5	Casey	1844	New York	1222
Brown, O. S.	Farmer	Johnson	6	Casey	1829	Illinois	1829
Brown, G. L.	Farmer	Westfield	20	Westfield	1857	"	1857
Brown, Robert H.	Banker	Marshall	11	Marshall	1861	"	1861
Brown, E. K.	Farmer	Douglas	21	"	1847	Ohio	1863
Bryant, B.	Farmer	Melrose	31	Melrose	1843	Illinois	1843
Bryon, J. L.	Publisher	Martinsville	33	Martinsville	1869	Kentucky	1869
Bubeck, Fred.	Farmer and Stock Raiser	Darwin	9	Marshall	1849	Germany	1851
Buckner, E. M.	Farmer and Clergyman	Melrose	23	Melrose	1833	Illinois	1833
Buckner, W. H.	Farmer and Stock Raiser	"	"	"	1847	"	1847
Burns, J. B.	Farmer and Stock Raiser	Douglas	27	Marshall	1841	Ohio	1850
Burns, Lewis	Farmer and Stock Raiser	"	"	"	1843	"	1851
Burnside, Alex.	Farmer and Miller	Dolson	11	"	1843	"	1849
Burnside, C. P.	Farmer	"	"	"	1819	"	1850
Busby, J. W.	Farmer and Breeder Fine Stock	Martinsville	33	Martinsville	1819	Indiana	1855
Bow, Fred	Farmer and Stock Raiser	Marshall	9	Marshall	1830	Switzerland	1862
Carpenier, J. W.	Farmer and Stock Raiser	Wabash	24	"	1849	Ohio	1852
Carpenier, Thos. A.	Farmer and Stock Raiser	Anderson	33	Melrose	1856	Illinois	1856
Carper, G. W.	Farmer and Stock Raiser	Martinsville	30	Martinsville	1827	Virginia	1848
Carr, C. A.	Tile and Brickmaker	Casey	19	Casey	1830	Indiana	1871
Caster, S.	Farmer	Marshall	27	Marshall	1837	Ohio	1850
Chapman, Robert	Farmer	Orange	32	Moonsline	1859	Illinois	1840
Chapman, J. A.	Farmer	"	"	"	1832	"	1838
Churchill, A. J.	Farmer	Auburn	30	Marshall	1844	Ohio	1849
Clapp, John H.	Retired Farmer	Dolson	34	Dolson	1821	N. C.	1847
Clapp, Alfred	Farmer and Stock Raiser	Douglas	30	"	1832	Illinois	1832
Clapp, Wm. M.	Farmer and Stock Raiser	Dolson	37	"	1847	"	1847
Clapp, E. W.	Farmer and Stock Raiser	"	"	"	1845	Indiana	1845
Clark, Stuart	Teacher	West Union	1	West Union	1847	Illinois	1867
Claypool, Eliha	Farmer	Dolson	10	Marshall	1844	"	1844
Claypool, Joseph	Farmer and Mechanic	"	"	"	1841	"	1841
Claypool, John	Farmer	"	"	"	1848	"	1848
Claypool, Elijah	Farmer	"	"	"	1844	"	1844
Claypool, Emanuel	Grocer	Marshall	10	"	1862	"	1862
Clements, D. H.	Farmer and Minister	Melrose	35	West York	1848	"	1848
Cook, M. L.	Merchant	Casey	1	Casey	1842	N. Y.	1847

NAME	BUSINESS	TOWNSHIP OF VILLAGE	NO.	POST OFFICE.	YEAR OF BIRTH.	NATIVITY.	YEAR CAME TO ILL.
Cole, A. G.	Farmer and Horse Breeder	Auburn	2	Martinsville	1838	Maryland	1891
Cole, E. L.	Farmer	Marshall	12	Marshall	1834	Indiana	1832
Cole, Walter	Abstructor	"	"	"	1833	Illinois	1833
Cole, V. L.	"	"	"	"	1838	"	1838
Cole, D. L.	Merchant	"	"	"	1830	N. Y.	1836
Collard, Sarah	Retired	Wabash	5	State Line	1848	Virginia	1871
Colliver, John L.	Farmer	Darwin	32	Walnut Prairie	1847	Indiana	1864
Colvin, Turner	Farmer and Breeder Fine Stock	Orange	6	Martinsville	1841	Kentucky	1865
Combs, W. A.	Farmer and Justice of the Peace	Dolson	35	Dolson	1843	Illinois	1843
Comstock, W. R.	Farmer	Westfield	24	Westfield	1839	"	1839
Constock, Dr. J.	Physician and Surgeon	Martinsville	32	Martinsville	1847	"	1847
Condy, Peter	Miller	Marshall	5	Marshall	1818	"	1818
Condon, Geo.	Farmer	Anderson	27	Anderson	1828	Kentucky	1842
Conna, Wm. S.	Farmer and Teacher	Marshall	32	Clark Center	1863	Illinois	1865
Cosper, Uriah	Farmer and Stock Raiser	Melrose	27	Melrose	1834	"	1834
Cosper, S. D.	Farmer and Stock Raiser	"	"	"	1836	"	1836
Cosper, M. E.	Farmer and Stock Raiser	Casey	2	Martinsville	1850	Indiana	1854
Cora, Joseph	Retired Farmer	Wabash	6	Marshall	1811	Virginia	1864
Cork, H. C.	Farmer	"	"	"	1843	West Va.	1864
Cork, Harrison T.	Farmer	"	"	"	1815	Ohio	1833
Cork, Andrew	Farmer	"	"	"	1843	Ohio	1843
Cornell, A. A. E.	Farmer	Westfield	23	Kansas, Ill.	1848	Illinois	1881
Cornwall, T. R.	Farmer and County Treasurer	"	"	"	1841	"	1867
Cornwall, A. G.	Farmer and Teacher	Melrose	30	Melrose	1842	Ohio	1855
Craig, Thomas	Farmer and Stock Raiser	"	"	"	1835	"	1841
Craig, Jesse	Farmer and Stock Raiser	Anderson	23	Marshall	1853	Illinois	1853
Craig, Albert	Farmer and Stock Raiser	Darwin	29	Eraut	1861	Illinois	1861
Craig, Robert	Farmer and Stock Raiser	"	"	"	1833	Illinois	1833
Crampton, Susan	Retired	Melrose	8	Melrose	1832	"	1833
Crawley, Jonathan	Farmer and Stock Raiser	Wabash	29	Casey	1843	Indiana	1844
Cremet, Wm.	Farmer and Stock Raiser	Douglas	28	Marshall	1836	Ohio	1855
Crouch, Wm.	Farmer and Stock Raiser	Johnson	24	Moonsline	1827	"	1838
Crowthier, James	Farmer	Wabash	32	State Line	1848	England	1876
Cunningham, H.	Farmer and Stock Raiser	Parker	36	Martinsville	1853	Ohio	1857
Curwright, Joseph	Retired	Westfield	25	Westfield	1820	Indiana	1858
Daniel, Isaac	Farmer and Stock Raiser	Marshall	21	Marshall	1836	Ohio	1869
Davis, Wm.	Farmer and Stock Raiser	Douglas	24	Olyver	1842	Illinois	1842
Davis, C. L.	Farmer and Stock Raiser	Westfield	23	Westfield	1814	"	1814
Davison, Geo. H.	Farmer and Stock Raiser	Wabash	8	Marshall	1831	Ohio	1849
Davison, Jas. H.	Farmer and Stock Raiser	"	"	"	1839	"	1839
Dawson, Thomas	Farmer and Stock Raiser	Anderson	36	Hatton	1864	Illinois	1865
Dawson, John E.	Teacher and Farmer	Marshall	7	Marshall	1832	England	1866
Dawson, Ben.	Farmer and Stock Raiser	"	"	"	1869	Illinois	1869
Day, Moses	Farmer and Stock Raiser	Westfield	28	Westfield	1833	"	1833
Day, Wm. H.	Farmer and Stock Raiser	Dolson	14	Clark Center	1846	Ohio	1852
Day, Wm. H.	Farmer and Stock Raiser	"	"	"	1848	"	1852
Dean, Thos. J.	Farmer and Stock Raiser	Wabash	35	Marshall	1832	Indiana	1848
Dehl, S.	Farmer and Stock Raiser	Johnson	24	Moonsline	1839	Ohio	1851
Dehl, Wm.	Farmer and Stock Raiser	"	"	"	1836	Penna.	1851
Deitz, Henry	Farmer and Stock Raiser	Marshall	34	Marshall	1838	Ohio	1858
Devany, Lackey	Farmer and Stock Raiser	Douglas	28	"	1815	Ireland	1847
Devol, Noel B.	Dentist	Marshall	1	"	1831	Kentucky	1852
Doll, Levi W.	Farmer	Wabash	4	Cohn	1835	Ohio	1837
Doll, Allen E.	Farmer	"	"	"	1871	Illinois	1871
Doll, Wm. W.	Farmer	"	"	"	1868	"	1868
Doll, D. D.	Grocer	Marshall	37	Marshall	1848	"	1848
Dolson, M. A.	Farmer	York	21	West Union	1822	"	1829
Douvan, J. P.	Farmer	Auburn	1	Clark Center	1848	Kentucky	1845
Doughbag, S.	Merchant	Casey	5	Casey	1841	Ohio	1842
Downey, R. A.	Farmer and Stock Raiser	Orange	8	Noodmore	1846	Illinois	1846
Dreese, Jas. R.	Farmer and Stock Raiser	Dolson	24	Dolson	1849	"	1884
Drake, S. R.	Farmer and Stock Raiser	Westfield	32	Westfield	1816	Kentucky	1837
Drummond, Jas. L.	Farmer and Stock Raiser	Melrose	7	Melrose	1849	Indiana	1851
Dulaney, R. L.	Banker	Marshall	10	Marshall	1822	Virginia	1831
Dulaney, Harry B.	Banker	"	"	"	1856	Illinois	1856
Dunlap, T. N.	Farmer and Stock Raiser	Wabash	31	State Line	1856	"	1856
Eckle, John	Farmer and Stock Raiser	Marshall	34	Marshall	1814	Germany	1843
Eldridge, J. P.	Farmer and Stock Raiser	Casey	15	Casey	1813	Mass.	1861
Ellington, R. M.	Farmer and Stock Raiser	Orange	2	Martinsville	1836	Ohio	1846
Ellington, D. F.	Blacksmith	"	"	"	1851	Illinois	1851
Elston, J. D.	Farmer	Anderson	23	Marshall	1843	Indiana	1855
Endsley, M. E.	Retired Farmer	Westfield	31	Westfield	1842	Illinois	1842
English, John C.	Farmer	Wabash	7	Marshall	1856	"	1856
Enos, F. B.	Retired Farmer	Dolson	3	Dolson	1817	Kentucky	1831
Evans, Jedell	Farmer and Stock Raiser	Melrose	27	Melrose	1841	Illinois	1841
Evans, Nixon	Farmer and Stock Raiser	"	"	"	1814	Indiana	1818
Evans, H. G.	Farmer and Stock Raiser	"	"	"	1849	Illinois	1849
Faversole, Jos							

HISTORICAL DIRECTORY OF CLARK COUNTY.

Table with columns: NAME, BUSINESS, TOWNSHIP OF VILLAGE, No. of Lots, Post-office, Year of Birth, NATIVITY, When came to Co. Includes entries for Frosenberg, Geo., Freeman, S. M., Fugate, C. F., Gage, Geo., Gage, John, Gamble, Harry, Gannon, Charlotte, Garner, John, Garwood, J. R., Gifford, J., Gifford, Edward, Gilbert, Dr. S. S., Gilbert, Daniel, Gilmer, George, Gilmer, Mrs. Martha, Graham, Jas. W., Graves, W. P., Greenough, W. P., Griffin, G. H., Griffin, R. P., Griffith, Mary E., Griffith, John A., Griffith, W. H., Griffith, C. H., Graham, Jas. G., Greth, David, Hall, Indiana, Hall, Albert, Hall, Robt. E., Hammond, A. P., Hammond, G. F., Hammond, C., Handy, M. A., Hansen, G., Handinger, D., Hardway, F. M., Hardwar, Andrew, Harris, James, Harrison, Abram, Harrod, Elijah, Harrod, J. M., Hawks, R. O., Hays, A. E., Hazlewood, A. J., Henbest, Edward, Hendricks, J. M., Hensley, Robert, Higgins, Geo., Hilbert, Mary, Hill, James M., Hill, Jeremiah, Hill, Henry, Hippard, Geo. A., Hodge, W. B., Sr., Hodge, W. B., Jr., Hodges, T. N., Hollenbeck, J. M., Holler, Ross, Holler, Jacob, Holler, Mrs. Mary, Holler, John, Hollingsworth, L., Hollingsworth, Isabella, Hooper, F. M., Hornbrook, Geo., Houghton, J. J., Howe, J. A., Huchala, M., Huchington, M. A., Hull, Addison, Hull, Jacob S., Hurst, Allen, Hurst, H. G., Hurst, Robert, Hurst, N. M., Huston, Mrs. Catherine, Hutches, A. J., Hutchings, W. H., Hutchings, S., Hutchinson, T. J., Hutchison, James W., Ingle, James, Irwin, Allen, Irwin, Frank, Irwin, S. W., Irwin, Isaac, Isler, J., Itle, Fred, Jamison, Archibald, James, Milo H., Jones, Dr. J. M., Jones, Mrs. Dr. L., Jamney, Harry M., Jeffers, Elijah, Jeffers, Coleman, Jeffers, Madison, Jeffers, W. C., Jewell, Levi, Johnson, Andrew, Johnson, W. C., Johnson, John, Johnson, G. A., Johnson, J. W.

Table with columns: NAME, BUSINESS, TOWNSHIP OF VILLAGE, No. of Lots, Post-office, Year of Birth, NATIVITY, When came to Co. Includes entries for Jones, E. D., Jones, G. L., Jones, Mrs. Lamine, Kammacher, Jacob, Kammacher, Frederick, Kammacher, Geo., Kammacher, Sarah, Kammacher, John, Kelly, S. M., Kelly, Ida, Kelly, Lawrence, Kelly, J. W., Kester, Fielden, Kester, J. S., Kettering, J. A., Keys, Nancy M., Kibby, H. E., Kibby, O. L., Kile, Henry, Kimlin, R. A., Kimlin, R. A., Kinlin, James, King, M. C., Klinger, John W., Kohler, Peter, Kramer, Troy, Kuhn, Jos. K., Kula, Jacob, Kykendall, H. C., Laberty, John, Laftery, P., Lake, Joseph, Lambdin, L. B., Lane, D., Lee, H. B., Lee, D. S., Lee, J. E., Lee, Chas., Lennington, Albert, Leppington, S., Lewis, M., Lewis, J. W., Liggett, John, Liggett, James A., Lindley, S. W., Littlefield, Mrs. M., Lockard, Jas. P., Locke, Morris, Lovell, Reuben, Lowry, Reuben, Lowry, Jasper, Lowry, J. B., Lutz, Jos. S., Lyman, J. G., Lyman, G. K., Madden, Michael, Madden, Thomas, Madison, Dr. James, Madison, E. C., Magill, J., Main, S. L., Malou, W. J., Manhart, Lewis, Mark, Frank, Marrs, I. B., Marrs, Wm., Martin, W. W., Marvin, Gary, Marvin, G. L., Mathews, Alex., Mayer, Jacob, McCann, Dr. W. G., McClary, J. W., McClary, J., McClary, W., McDanel, A. H., McDanel, A. H., McDanel, L. C., McFarland, G. L., McNary, Byron, McNurlan, John, McNurlan, Wm., Mosker, Wm., Mosker, Chas., Moly, John, Michael, Harabas, Millhouse, H., Miller, J. H., Miller, Wm. W., Miller, Wm., Miller, Miles, Miller, Frank, Mitchell, Frank, Mitchell, Jeaner, Mitchell, Thom. L., Multer, Henry, Multer, Richard, Montgomery, J. L., Montgomery, H. C., Moore, Michael, Moore, Frank, Moore, James, Morgan, L. L., Mount, Jas. A., Murphy, Liberty, Murphy, J. T.

HISTORICAL DIRECTORY OF CLARK COUNTY.

NAME	BUSINESS	TOWNSHIP OF RESIDENCE	POST OFFICE	YEAR BORN	NATIVITY	WIVES
Marphy, A.	Farmer and Stock Raiser	Auburn	Clark Center	1845	Illinois	1845
Marphy, C.	Farmer and Stock Raiser	"	"	1844	"	1844
Myers, J. W.	Farmer and Stock Raiser	Douglas	Oliver	1810	"	1870
Myers, James H.	Farmer and Stock Raiser	Marshall	Marshall	1811	Ohio	1867
Myers, R. C.	Farmer and Stock Raiser	Darwin	Darwin	1823	Indiana	1847
Nay, Arthur	Farmer and Stock Raiser	Dolson	Dolson	1828	Illinois	1847
Nettelton, N.	Retired Farmer	Orange	Orange	1817	N. Hamp.	1868
Newburn, Louise	Farmer	Wabash	Farrel	1843	Kentucky	1848
Nichols, J. D. E.	Farmer and Breeder of Fine Stock	Martinsville	Martinsville	1833	Illinois	1844
Nichols, H. H.	Farmer and Breeder of Fine Stock	"	"	1867	"	1867
Nider, Mathias	Farmer and Stock Raiser	Melrose	West York	1814	Ohio	1871
Noland, Elias	Farmer and Stock Raiser	Wabash	Marshall	1824	Kentucky	1886
Norman, A. H.	Farmer and Stock Raiser	Martinsville	Martinsville	1845	Indiana	1889
Norris, L. W.	Farmer and Stock Raiser	Auburn	Clark Center	1823	Ohio	1871
Norris, Samuel	Farmer and Stock Raiser	Auburn	Clark Center	1823	Ohio	1871
O'Garra, John	Farmer and Stock Raiser	Marshall	Marshall	1825	Ireland	1832
Olm, Geo.	Farmer and Stock Raiser	Anderson	"	1868	Illinois	1868
Olmsted, C. H.	Veterinary Surgeon	"	"	1863	"	1866
Orr, H. C.	State's Attorney	Marshall	"	1839	Ohio	1852
Orr, M. M.	Farmer and Stock Raiser	Johnson	Advance	1834	"	1875
Orrell, Samuel	Farmer and Stock Raiser	"	"	1827	"	1875
Osborn, Isaac	Farmer and Stock Raiser	Auburn	Oak Point	1833	Indiana	1840
Osborn, Preston	Farmer and Stock Raiser	Auburn	Clark Center	1838	"	1888
Owen, M. G.	Farmer and Stock Raiser	York	West York	1815	"	1869
Owen, B. C.	Dealer in General Merchandise	Westfield	West York	1843	"	1879
Parcell, Sam'l N.	Farmer and Stock Dealer	"	"	1830	Illinois	1850
Parcell, Hiram	Farmer and Stock Raiser	Martinsville	Martinsville	1831	England	1844
Park, T. N.	Farmer and Stock Raiser	Anderson	"	1839	Ohio	1876
Parsons, Dr. Edward	Physician and Surgeon	Darwin	Darwin	1849	Illinois	1849
Parsons, L. G.	Farmer and Stock Raiser	Casey	Martinsville	1832	Ohio	1851
Parsons, J. C.	Farmer and Stock Raiser	"	"	1860	Illinois	1860
Parsons, Cromwell	Farmer and Stock Raiser	Anderson	Marshall	1834	Maryland	1847
Parson, J. W.	Farmer and Stock Raiser	Marshall	"	1848	Illinois	1848
Patrick, Allen	Farmer and Stock Raiser	Anderson	"	1868	"	1868
Patrick, Walter	Merchant	Auburn	Clark Center	1842	Ohio	1869
Perkins, Lafayette	Farmer and Stock Raiser	Parker	Martinsville	1856	Illinois	1856
Perkins, H. S.	Farmer and Stock Raiser	Casey	Casey	1839	Indiana	1865
Peters, W. S.	Banker	"	"	1823	Ohio	1858
Phillips, R. L.	Attorney (of firm of Gassaw & Phillips)	Marshall	Marshall	1868	Indiana	1878
Piersall, M. A.	Retired	Casey	Martinsville	1829	Kentucky	1874
Pinnell, J. T.	Farmer and Stock Raiser	Westfield	Westfield	1842	Illinois	1847
Pinnell, J. J.	Farmer and Stock Raiser	"	"	1826	Kentucky	"
Poorman, B. P.	Miller and Wholesale Dealer in Flour	West Union	West Union	1842	Illinois	"
Poorman, Amanda	Farmer and Stock Raiser	West Union	"	1842	Illinois	"
Poorman, J. J.	Farmer and Stock Raiser	Hutton	Hutton	1828	Kentucky	1836
Prait, J. L.	Notary Public, etc.	Westfield	Westfield	1837	Illinois	1857
Pritchard, Ingram	Furniture and Undertaker	Westfield	Westfield	1835	Ohio	1840
Quick, J.	Farmer and Stock Raiser	Marshall	Marshall	1837	Indiana	1887
Quick, J. J.	Farmer and Stock Raiser	"	"	1828	N. Y.	1840
Ralston, Prevo	Farmer and Stock Raiser	Melrose	West York	1844	Illinois	1844
Ralston, T. B.	Farmer and Stock Raiser	"	"	1835	Indiana	"
Ralston, A. J.	Farmer and Stock Raiser	"	"	1829	"	1840
Ramsay, David	Farmer and Stock Raiser	Johnson	Martinsville	1899	Ireland	1842
Raney, W. C.	Farmer and Stock Raiser	Marshall	Martinsville	1847	Indiana	1873
Rardin, Jackson (of Rardin Bros.), Miller	"	Westfield	Westfield	1847	"	1862
Ratts, Richard	Farmer and Stock Raiser	Orange	Martinsville	1834	"	1858
Reed, L. N.	Farmer and Stock Raiser	Auburn	Clark Center	1837	"	1846
Reedman, L. L.	Farmer and Stock Raiser	Westfield	Westfield	1830	Kentucky	1831
Reynolds, D. D.	Farmer and Stock Raiser	Douglas	Marshall	1843	Illinois	1843
Reynolds, Holly	Farmer and Stock Raiser	"	"	1822	"	1835
Richards, Rev. J. W.	Cherryman	Melrose	Walnut Prae	1863	"	1863
Richard, J. A. (of Richard & Johnson), Saw, Feed and Mead Mills, Lumber and Fine Stock	"	Martinsville	Martinsville	1855	"	1868
Rinehart, J. B.	Farmer and Stock Raiser	Dennison	Dennison	1838	N. J.	1872
Robinson, L. D.	Farmer and Stock Raiser	Parker	Martinsville	1819	Tenn.	1822
Robinson, Lucius	Farmer and Stock Raiser	Wabash	State Line	1838	Virginia	1849
Robinson, Wm. B.	Farmer	Darwin	Marshall	1828	"	1849
Rodgwood, E. M. C.	Cashier of People's Bank	Martinsville	Martinsville	1863	Illinois	1889
Schomaker, Abraham	Farmer and Stock Raiser	Parker	"	1832	Ohio	1846
Rogers, C. B.	Farmer and Stock Raiser	"	"	1834	"	1849
Rollins, Walter	Farmer and Stock Raiser	Wabash	Dennison	1866	"	1871
Romins, W. F.	Farmer and Stock Raiser	Auburn	Martinsville	1831	Virginia	1833
Ross, D.	Farmer and Stock Raiser	Marshall	Marshall	1842	Illinois	1842
Ross, R. B. R.	Police Magistrate	Casey	Casey	1843	Indiana	1870
Rupp, Henry	Retired Farmer	Martinsville	Martinsville	1805	Penna.	1847
Rush, Spencer	Farmer and Stock Raiser	Casey	"	1843	Ohio	1846
Rowe, J. W.	Miller (of Rowe Bros.)	Martinsville	"	1830	Indiana	1869
Rowe, C. F.	Miller (of Rowe Bros.)	"	"	1838	"	1849
Ryan, Taylor	Insurance and Real Estate	"	"	1849	Indiana	1868
Schneider, L.	Merchant	Johnson	Casey	1855	Indiana	1896
Sales, T. M.	Lumber Dealer, also Breeder of Fine Stock	Martinsville	Martinsville	1838	Kentucky	1873
Sanders, W. F.	Farmer and Stock Raiser	Anderson	Marshall	1849	Indiana	1849
Schmitt, John	Farmer and Stock Raiser	Auburn	"	1829	Switzerland	1866
Schnell, John	Judge	Marshall	"	1844	Illinois	1844
Schott, G. A.	Farmer and Stock Raiser	Auburn	"	1829	Germany	1847
Schumaker, Abraham	Farmer and Stock Raiser	Darwin	"	1849	"	1836
Scott, A. M.	Farmer and Stock Raiser	Melrose	West Union	1810	Ohio	1849
Scott, R. B.	Farmer and Stock Raiser	Casey	Casey	1822	Kentucky	1864
Seaton, Peter	Retired	Parker	Martinsville	1812	"	1841
See, B. J.	Farmer and Stock Raiser	Douglas	Marshall	1826	"	1861
See, B. F.	Farmer and Stock Raiser	"	"	1860	Illinois	1860
Seay, Lemuel	Farmer and Stock Raiser	Casey	Casey	1844	Ohio	1860
Seisun, John	Farmer and Stock Raiser	Auburn	Clark Center	1826	Penn.	1843
Seizer, John	Retired Farmer	Wabash	Marshall	1820	Germany	1824
Seizer, J. G.	Farmer and Stock Raiser	"	"	1840	Ohio	1844
Seizer, J. G.	Editor and Proprietor Agora	Marshall	Marshall	1849	Kentucky	1853
Shade, Barbara	Farmer and Stock Raiser	Anderson	"	1814	Germany	1843
Shadley, W. F.	Farmer and Stock Raiser	Johnson	Oak Point	1833	Ohio	1862
Shaffer, Fred	Farmer and Stock Raiser	Darwin	East	1822	Germany	1865
Shaffer, Nelson	Farmer and Stock Raiser	Auburn	Martinsville	1836	Penna.	1840
Shaffer, John F.	Farmer and Stock Raiser	"	"	1839	"	1860
Shaffer, J. C.	Farmer and Breeder of General Purpose Horses and Grade Cattle	Martinsville	"	1855	Illinois	1855
Shawver, Alex	Proprietor of Sawmill	Dolson	Dolson	1811	Indiana	1868
Shawver, John W.	Farmer and Stock Raiser	Parker	Martinsville	1844	Illinois	1861
Shawver, Milton	Farmer and Stock Raiser	"	"	1826	West Va.	1862
Shoop, J. B.	Farmer and Stock Raiser	Melrose	Marshall	1831	Illinois	1841
Shroy, Gottlieb	Retired Farmer	Wabash	Colo	1817	Germany	1849
Shroy, J. L.	Farmer and Stock Raiser	Johnson	Casey	1846	Indiana	1849
Shroy, J. L.	Farmer and Stock Raiser	"	"	1846	"	1849
Shroy, Albert A.	Farmer and Stock Raiser	Marshall	Marshall	1841	Ohio	1848
Shroy, H. W.	Farmer and Stock Raiser	Dolson	Clark Center	1813	"	1817
Shroy, J. G.	Farmer and Stock Raiser	Wabash	Westfield	1814	Illinois	1849
Shroy, W. L.	Merchant	Westfield	"	1810	"	1870
Sinnous, A.	Farmer and Stock Raiser	Martinsville	Martinsville	1822	"	1843
Sively, Jacob	Farmer and Stock Raiser	Anderson	Marshall	1844	Ohio	1843
Sloan, J. H.	Farmer and Stock Raiser	Westfield	Westfield	1817	"	1863
Sloan, John	Farmer and Stock Raiser	Casey	Martinsville	1854	Illinois	1854
Slosser, T. J.	Farmer and Stock Raiser	Orange	Orange	1842	Ohio	1842
Slosser, M.	Farmer and Stock Raiser	Casey	"	1860	Illinois	1860
Smith, Alvan	Farmer and Stock Raiser	Marshall	Clark Center	1843	Penna.	1880
Smith, J. W.	Farmer and Stock Raiser	Marshall	Clark Center	1843	Illinois	1846
Smith, Jos.	Farmer and Carpenter	Melrose	Dolson	1846	Illinois	1846
Smuly, Sam'l M.	Farmer and Stock Raiser	Martinsville	Martinsville	1834	"	1848
Sneider, G. W.	Farmer and Stock Raiser	Wabash	McKeen	1864	Illinois	1864
Sneider, J. Q.	Farmer and Stock Raiser	"	State Line	1817	Ohio	1839
Sneider, J. Q.	Retired Farmer	"	McKeen	1819	"	1845
Snyder, J. H.	Farmer and Stock Raiser	York	West Union	1828	Louisiana	1861
Snyder, Mary	Farmer and Stock Raiser	Martinsville	Martinsville	1842	Indiana	1849
Snyder, Frank	Photographer	Westfield	Westfield	1869	Illinois	1869
Snyder, W. A.	Merchant and Postmaster	Westfield	Westfield	1840	"	1840
Snyder, Jas. W.	Wagonmaker	Marshall	Marshall	1834	Penna.	1844
Snyder, Mrs. Catharine	"	"	"	1832	Ohio	1840
Snyder, Jas. G.	Farmer and Stock Raiser	Wabash	"	1846	Illinois	1846
Spaugler, Peter	Farmer and Stock Raiser	"	"	1843	Germany	1865
Spauld, Wm. G.	Farmer and Stock Raiser	Marshall	"	1858	Illinois	1858
Spencer, S.	Farmer and Stock Raiser	Orange	Orange	1828	West Va.	1851
Spicer, Wm.	Farmer and Stock Raiser	Moonshine	Moonshine	1825	N. C.	1846
Stanfield, S.	Farmer and Stock Raiser	Melrose	Melrose	1829	Kentucky	1832
Stephenson, S. J.	Merchant and Postmaster	Clarksville	Dolson	1836	N. Y.	1870
Stewart, J.	Farmer and Stock Raiser	Marshall	Marshall	1829	Illinois	1857
Stover, Chas.	Farmer and Stock Raiser	Wabash	"	1858	"	1861
Strubinger, Geo.	Farmer and Stock Raiser	Douglas	Marshall	1827	Germany	1866
Stutz, J. H.	Farmer and Stock Raiser	Dolson	Dolson	1818	Penna.	1822
Stutz, E. C.	Farmer and Stock Raiser	Casey	Casey	1831	Kentucky	1851
Summers, Edw.	Farmer and Stock Raiser	Wabash	Marshall	1835	Penna.	1865
Summers, Edgar	Banker	Wabash	Marshall	1836	Illinois	1856
Sutton, Hamilton	County Clerk	Marshall	Marshall	1844	Indiana	1849
Sweet, B. A.	County Superintendent of Schools	"	"	1864	Illinois	1864
Swin, S. S.	Farmer and Stock Raiser	Johnson	Casey	1833	Ohio	1844
Swope, Jefferson	Farmer and Stock Raiser	Orange	Orange	1836	Louisiana	1830
Swope, J. D.	Farmer and Stock Raiser	"	"	1844	"	1849
Tappett, Wm.	Farmer and Stock Raiser	Anderson	Auburn	1826	Kentucky	1840
Tarbell, Martin	Farmer and Stock Raiser	Parker	Cleone	1848	Illinois	1848
Taucock, Hon. H. E.	Farmer and Member of the Legislature	Darwin	Marshall	1855	Indiana	1858
Taubneck, Chas.	Retired Farmer	"	"	1820	Germany	1850
Taubneck, Otto	Retired Farmer	"	"	1825	"	1850
Taubneck, Oliver O.	Farmer and Proprietor Saw-mill	"	Ernst	1857	Indiana	1858
Taylor, John M.	Farmer and Stock Raiser	Wabash	Dennison	1857	"	1862
Taylor, Josiah	Farmer and Stock Raiser	Auburn	Clark Center	1835	Illinois	1835
Terry, D. W.	Farmer and Stock Raiser	Douglas	Dolson	1832	Ohio	1866
Thompson, James	Farmer and Stock Raiser	Melrose	Melrose	1829	Illinois	1853
Thompson, J. E.	Farmer and Sheep Shearer	"	"	1853	"	1853
Thompson, J. D.	Farmer and Stock Raiser	Auburn	Clark Center	1868	"	1868
Thompson, G. A.	Farmer and Stock Raiser	"	"	1853	Indiana	1862
Thompson, W. W.	Retired	Dennison	Dennison	1818	Vermont	1832
Thompson, David	Farmer and Stock Raiser	Martinsville	Martinsville	1827	Ohio	1819
Thompson, N.	Farmer and Stock Raiser	Orange	Neadmoro	1828	Indiana	1851
Thompson, John	Farmer and Stock Raiser	Wabash	Marshall	1829	Illinois	1879
Tibbs, Newton (of firm of Graham & Tibbs, Attorneys-at-law)	"	Marshall	"	1854	Kentucky	1860
Tingley, Levi	Farmer and Stock Raiser	Martinsville	Martinsville	1837	Illinois	1847
Tingley, John	Farmer and Stock Raiser	Darwin	Marshall	1834	"	