

OUTLINE MAP OF

Coffey County

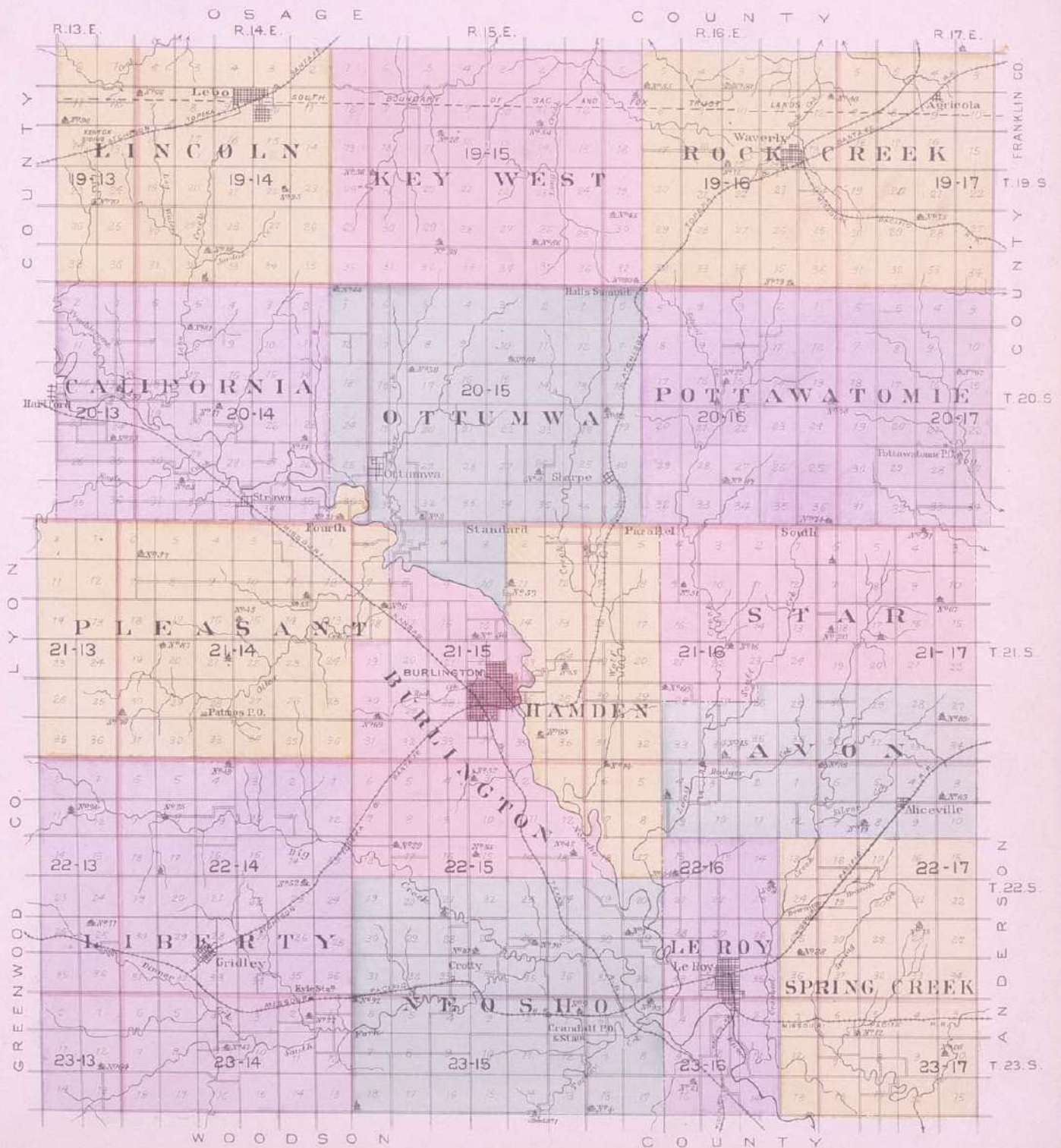
KANSAS

1901

Scale 2 1/2 Miles

EXPLANATION

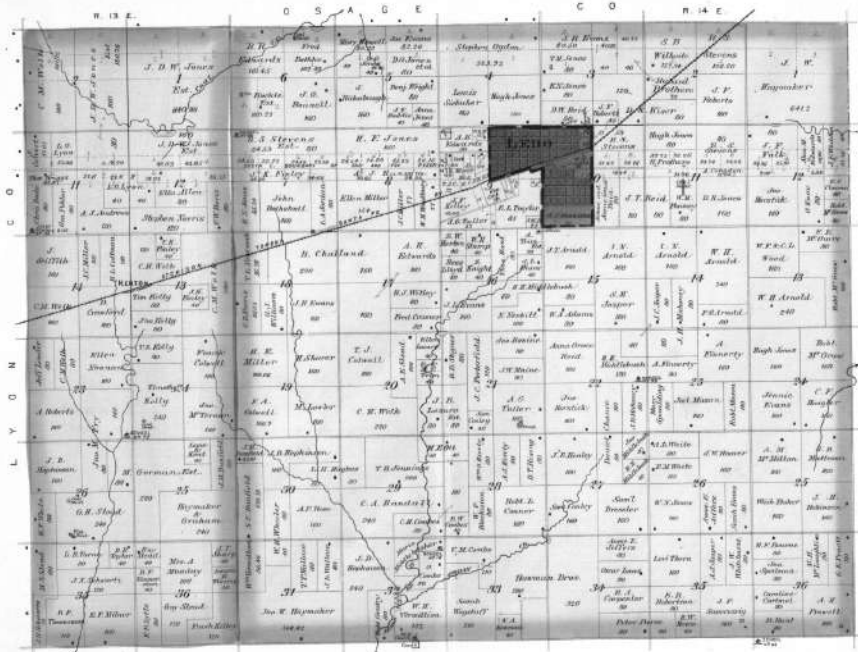
- Section Line
- Farm or lot line
- Wagon Road
- Railroad
- Creeks & Springs
- Rivers
- Churches
- School Houses
- Adjacent lands owned by same party connected by a hole, thus
- Post Office
- Coal land in Zinc Mine
- County Bridge



TOWNSHIP 19 SOUTH RANGES 13 & 14 EAST

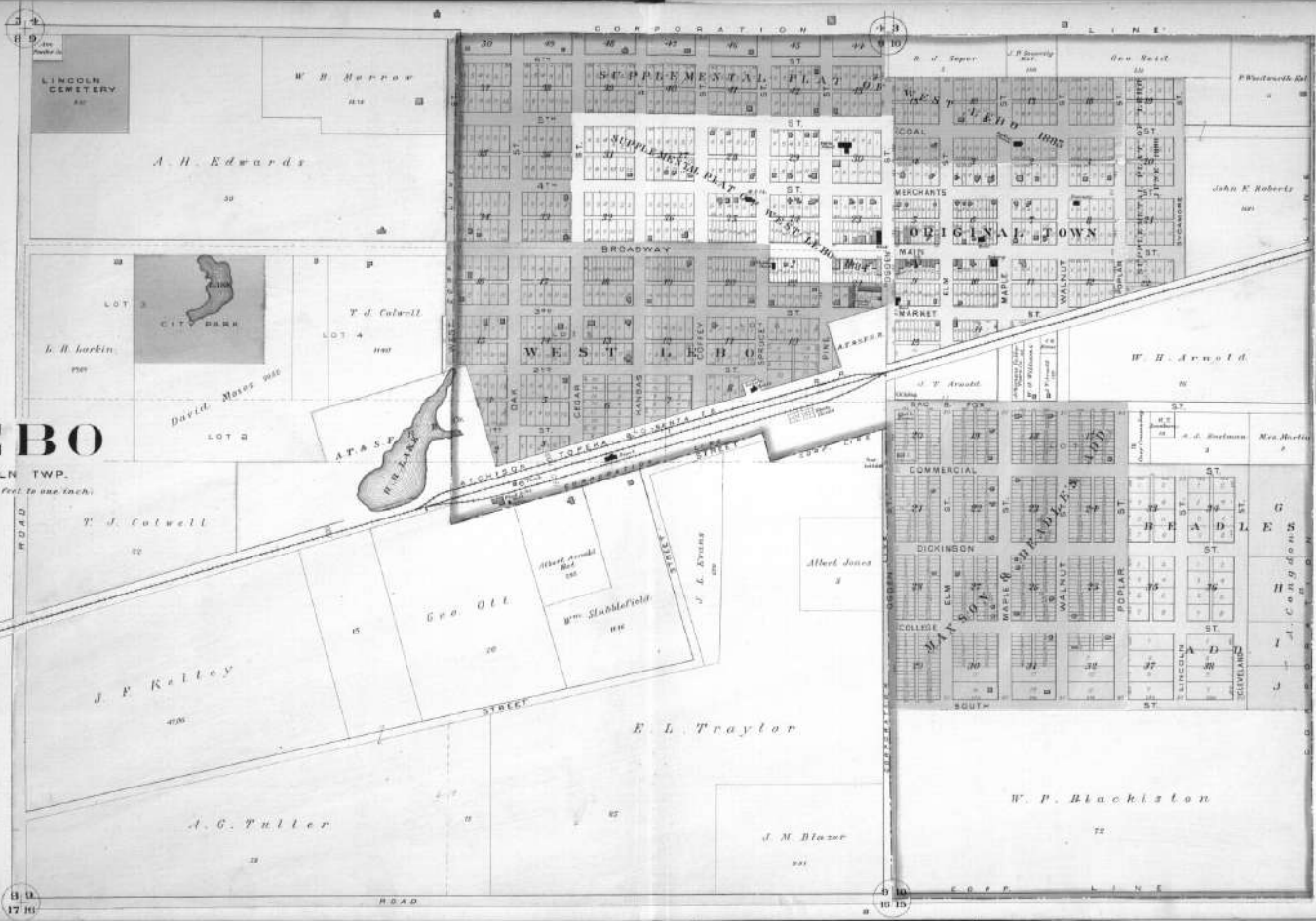
Scale 2 Inches to the Mile

of the 6th Principal Meridian.



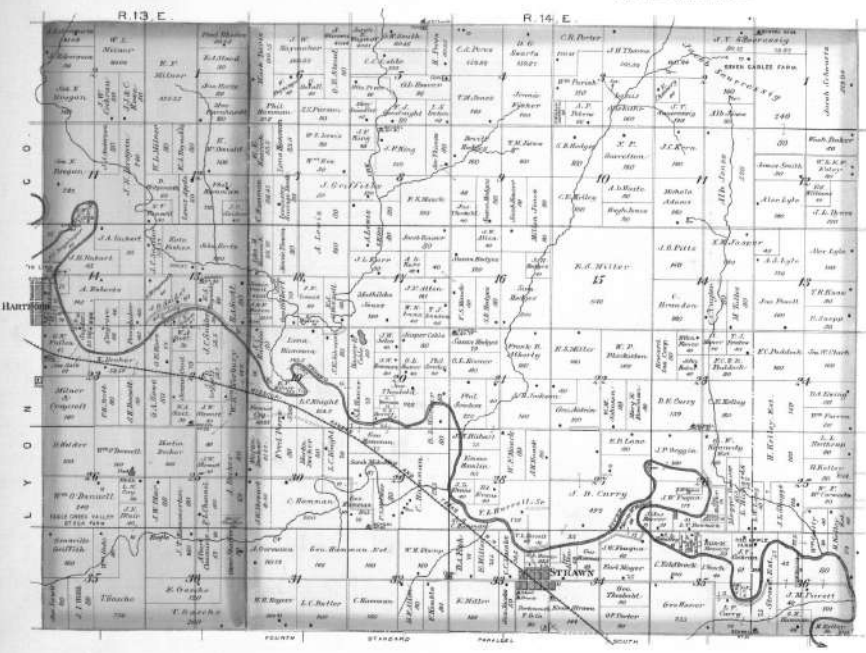
LEBO

LINCOLN TWP.
Scale: 300 feet to one inch.



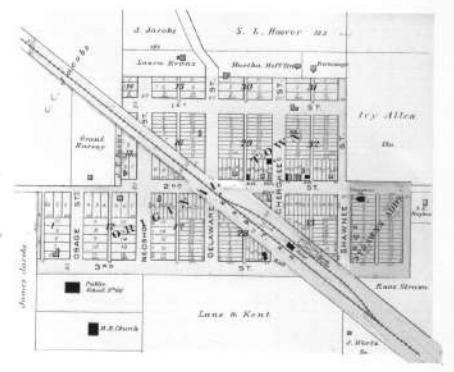
TOWNSHIP 20 SOUTH RANGES 13 & 14 EAST

Scale 2 Inches to the Mile
of the 6th Principal Meridian.



STRAWN

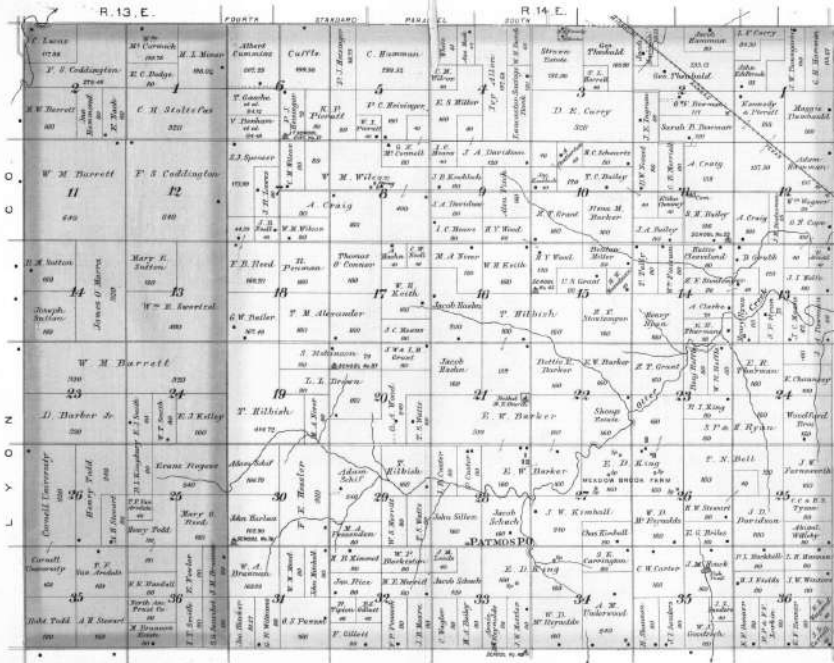
CALIFORNIA TMD.
1860-1870 and 1880-1890




TOWNSHIP 21 SOUTH RANGES 13 & 14 EAST

Scale 2 Inches to the Mile

of the 65th Principal Meridian

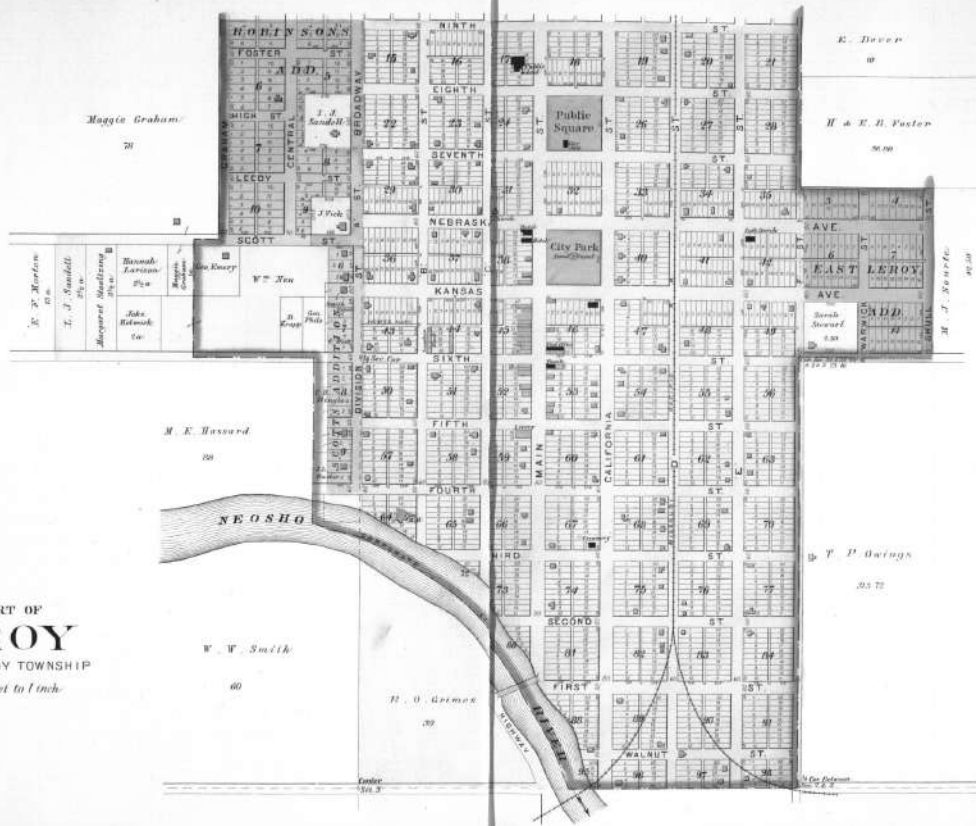


SOUTH PART OF BURLINGTON

COUNTY SEAT OF COFFEY CO.

Scale 300 ft. to one inch.





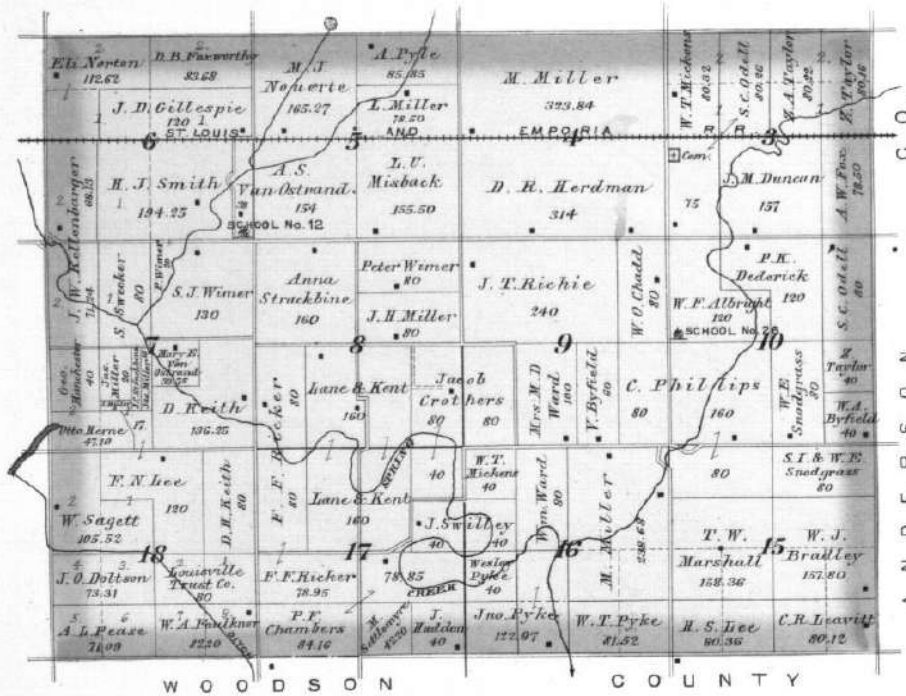
SOUTH PART OF
LEROY
 LOCATED IN LEROY TOWNSHIP

Scale 300 feet to 1 inch


TOWNSHIP 23 SOUTH RANGE 17 EAST.

Scale 2 Inches to the Mile.

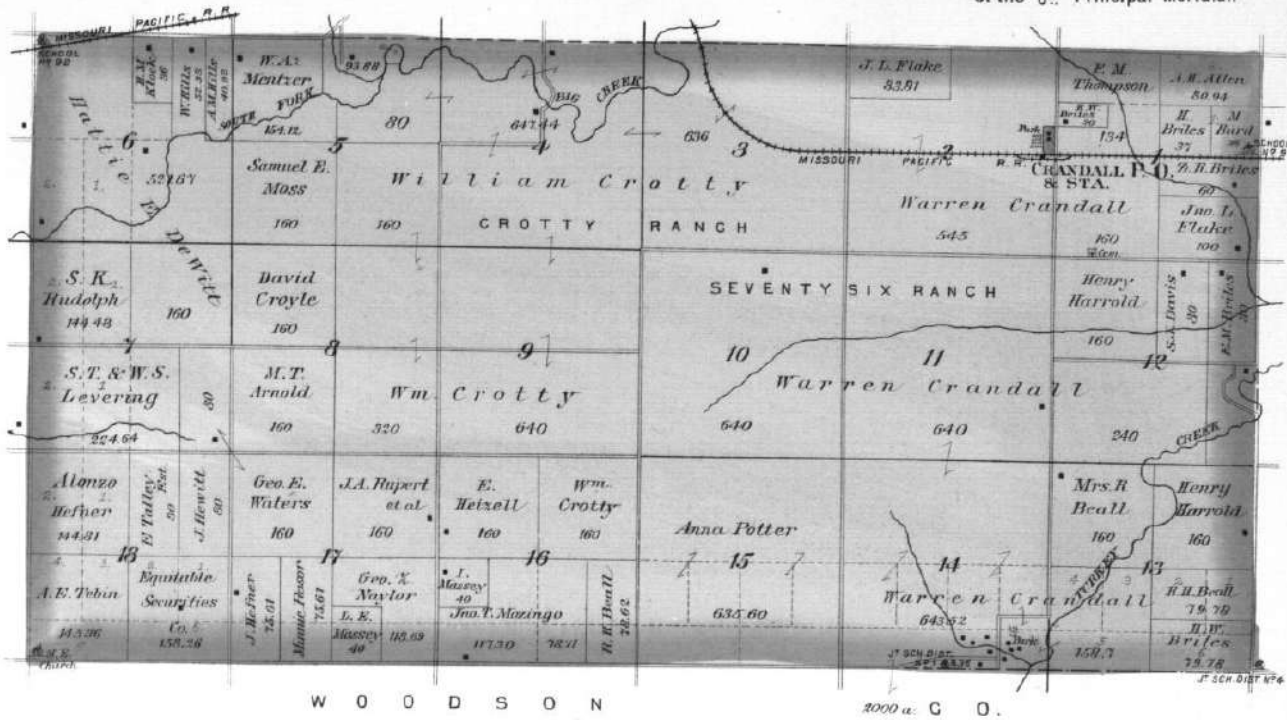
of the 6th Principal Meridian.



TOWNSHIP 23 SOUTH RANGE 15 EAST

Scale 2 Inches to the Mile.

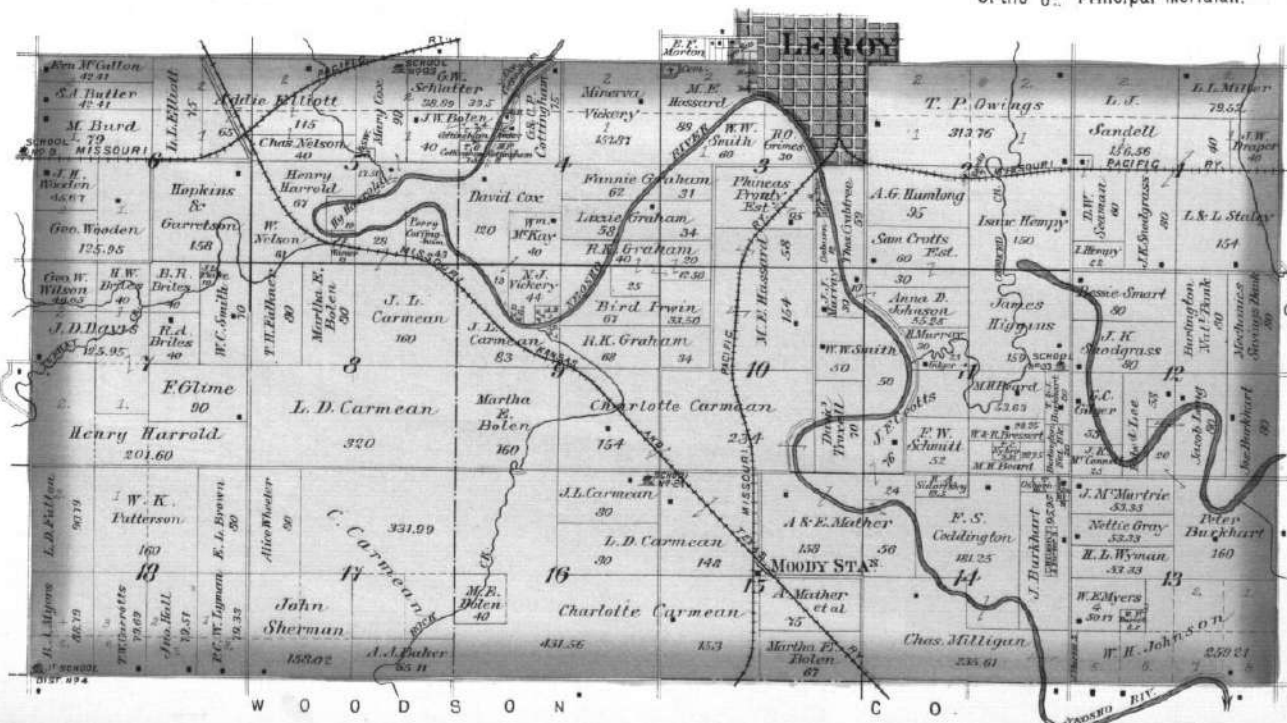
of the 6th Principal Meridian



TOWNSHIP 23 SOUTH RANGE 16 EAST

Scale 2 Inches to the Mile.

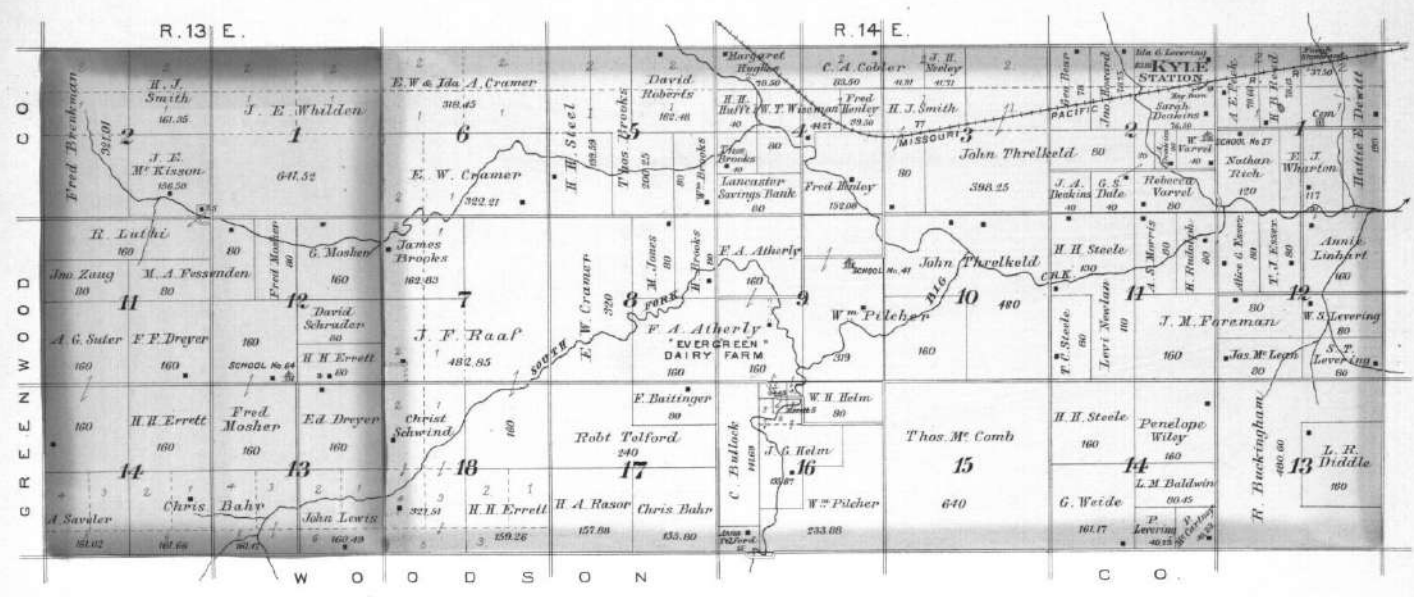
of the 6th Principal Meridian.



TOWNSHIP 23 SOUTH RANGES 13 & 14 EAST

Scale 2 Inches to the Mile.

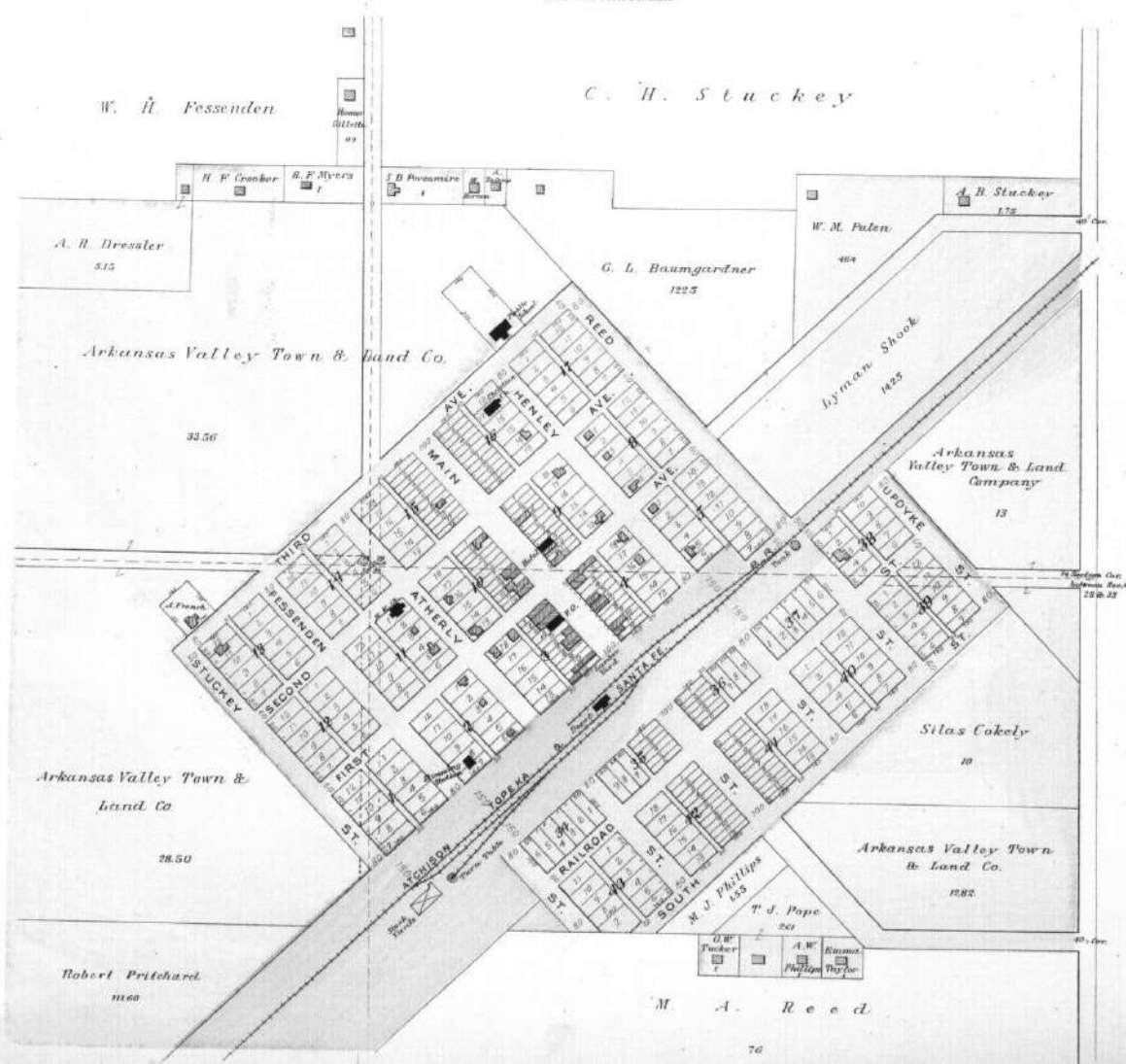
of the 6th Principal Meridian.



GRIDLEY

LOCATED IN LIBERTY TP.

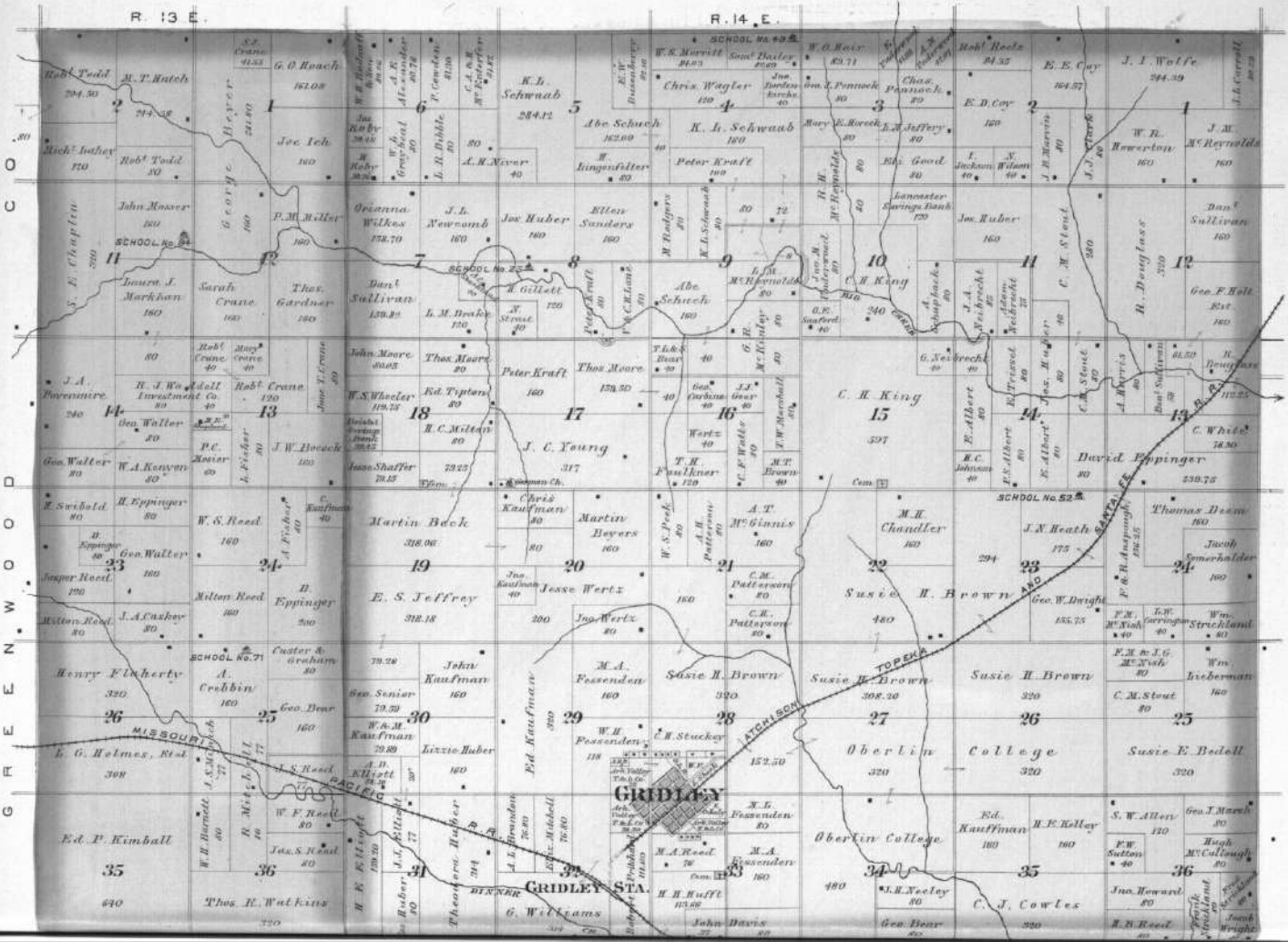
Scale 300 Ft. to one Inch.



TOWNSHIP 22 SOUTH RANGES 13 & 14 EAST.

Scale 2 Inches to the Mile.

of the 6th Principal Meridian.

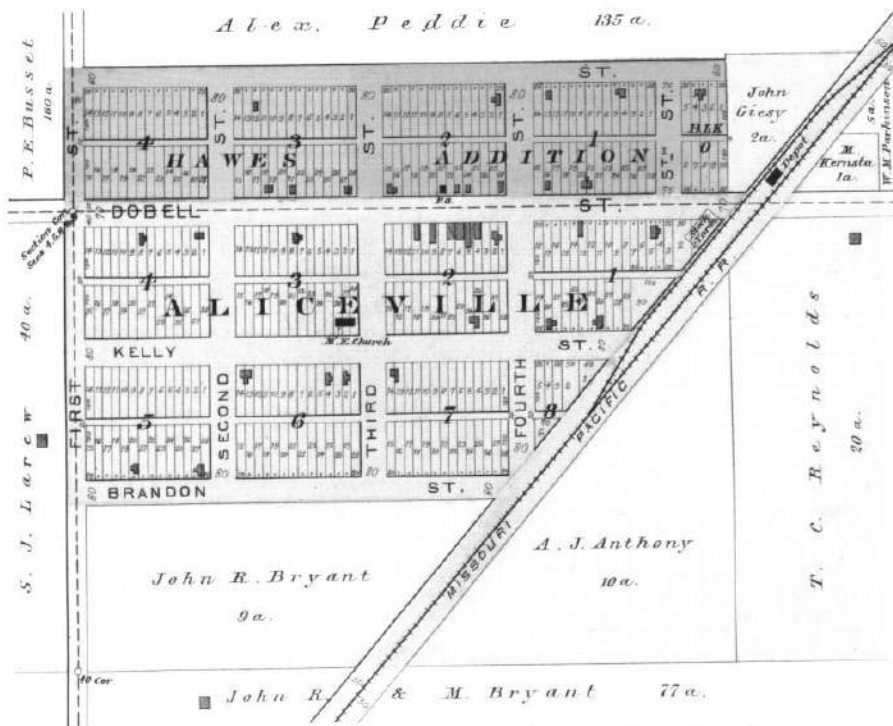


ALICEVILLE

AVON TOWNSHIP

Scale 300 feet to one Inch.

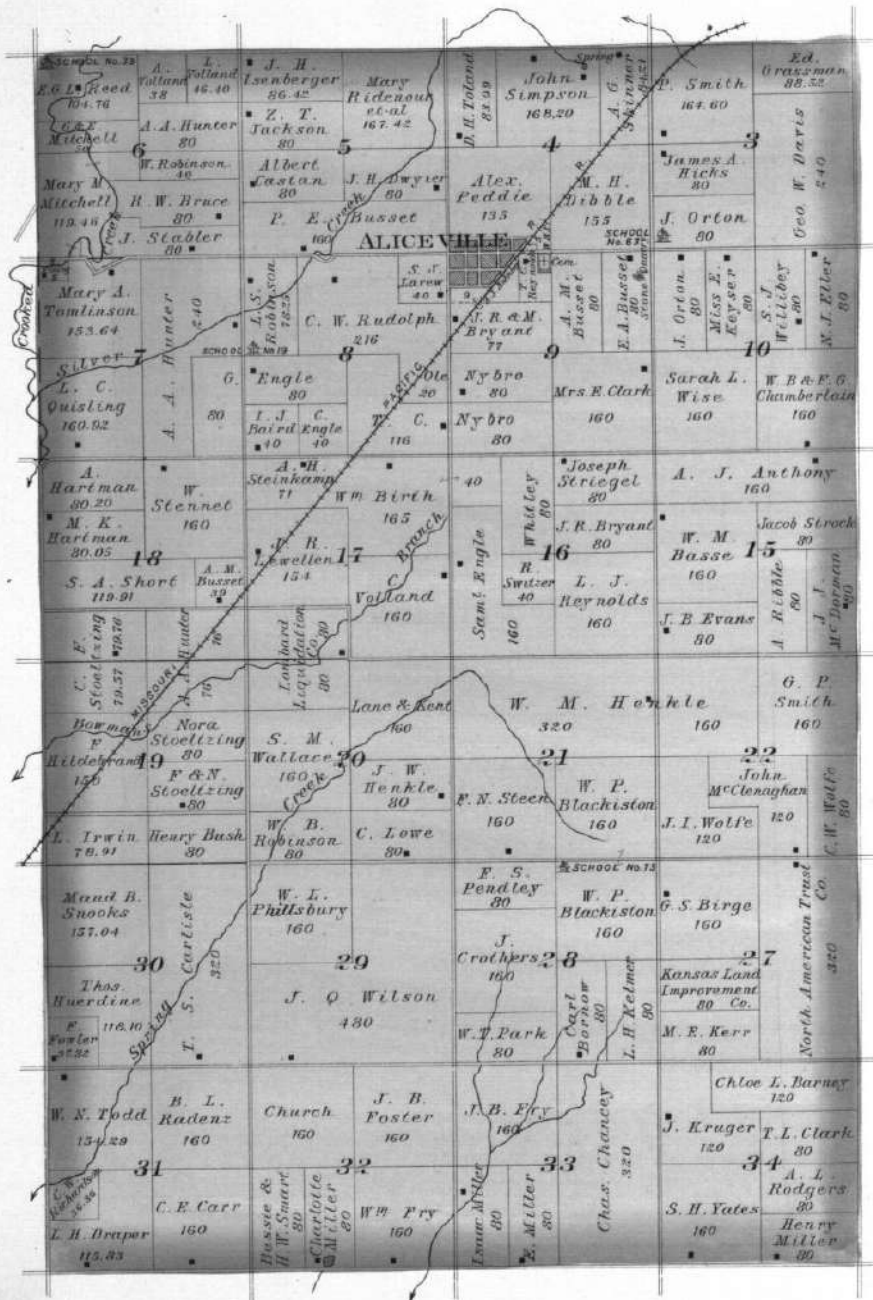
Alex. Peattie 135 a.



TOWNSHIP 22 SOUTH RANGE 17 EAST

Scale 2 Inches to the Mile.

of the 6th Principal Meridian.

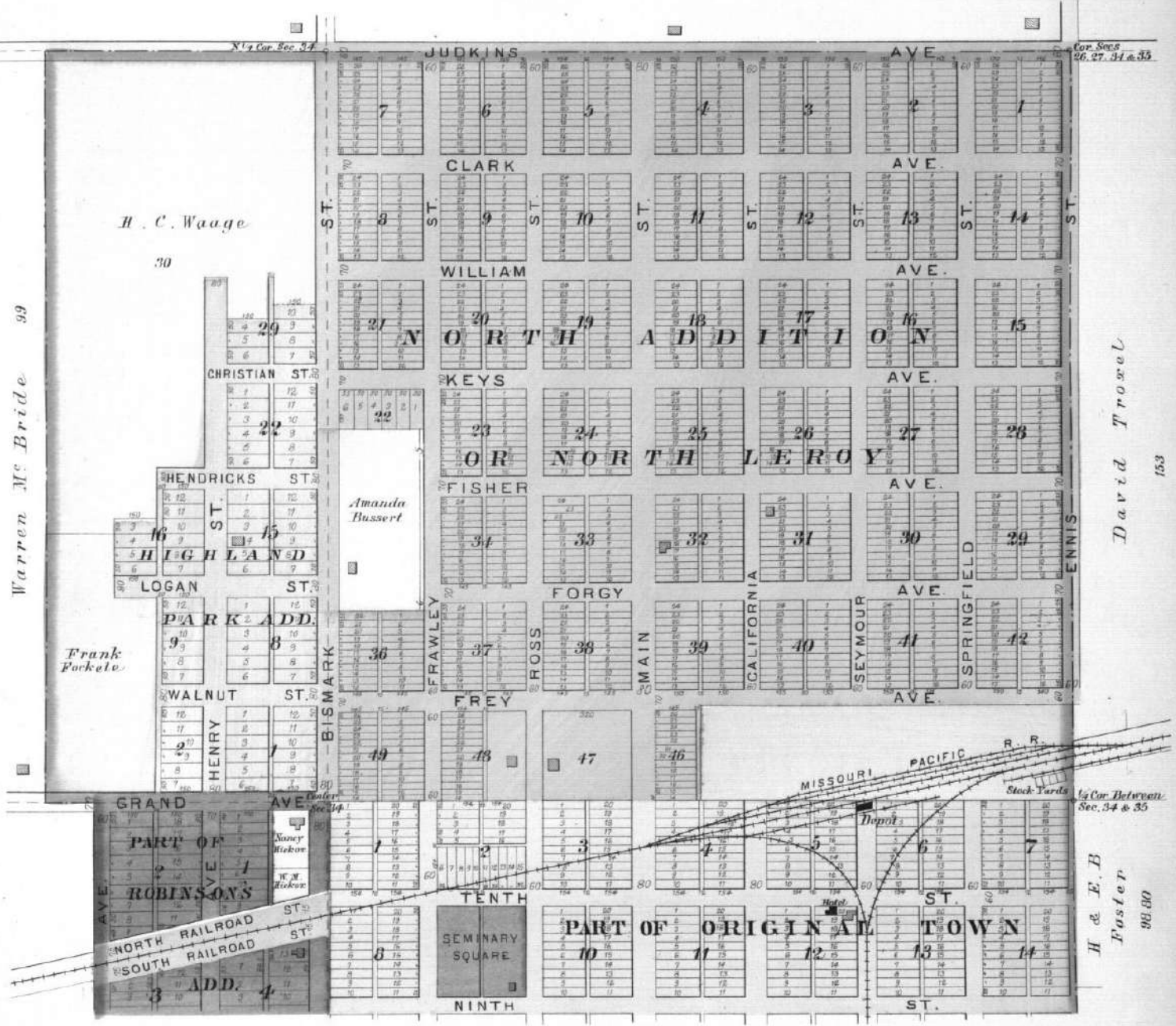


C
O
N
S
E
L
D
A
N

NORTH PART OF LEROY

LOCATED IN LEROY TOWNSHIP

Scale 300 feet to 1 inch



Warren M. Bride 99

David Trovel 153

H & E. B. Foster 98.00

H. C. Waage 30

Frank Fockete

Amanda Hussert

PART OF ROBINSON'S

PART OF ORIGINAL TOWN

NORTH RAILROAD
SOUTH RAILROAD

MISSOURI PACIFIC R.R.
Stock Yards
Depot

SEMINARY SQUARE

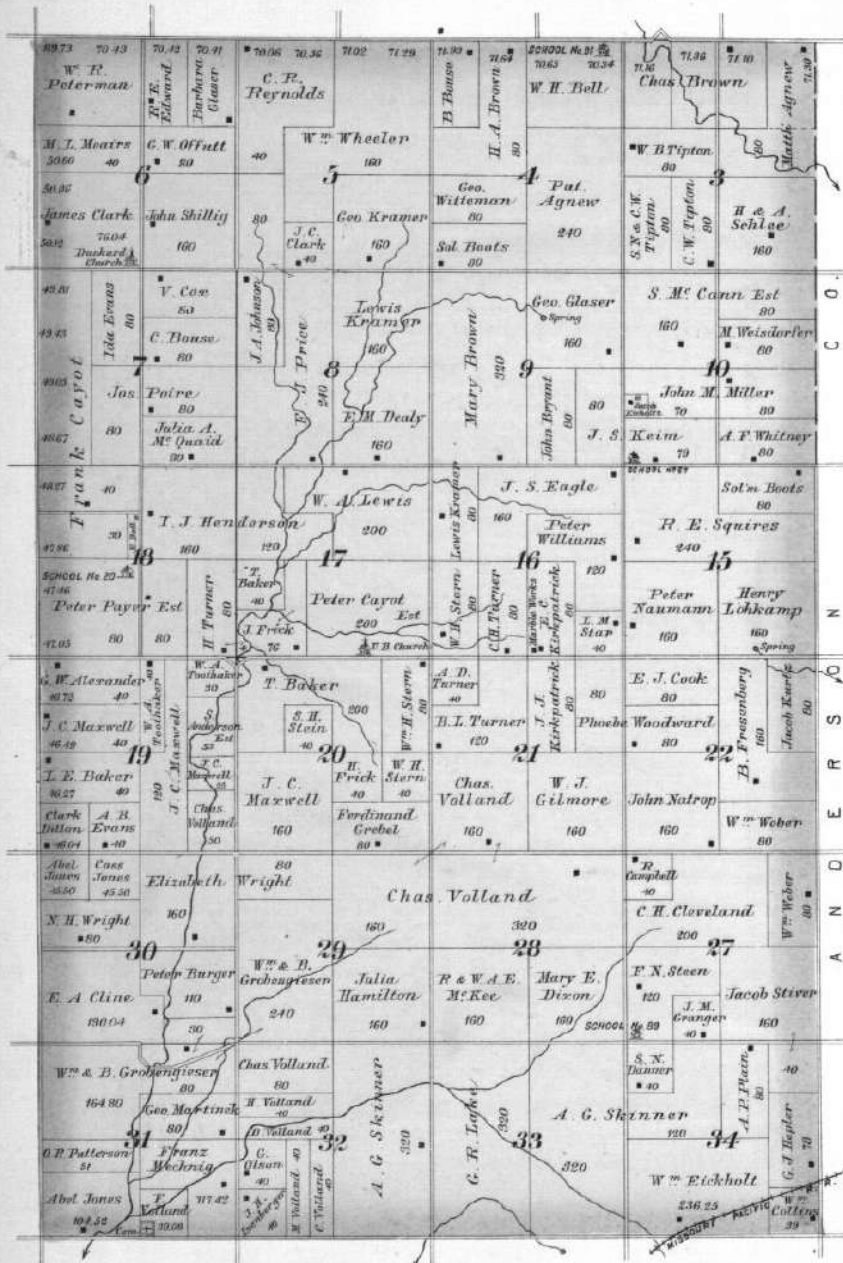
Cor. Secs 26, 27, 34 & 35

By Cor. Between Sec. 34 & 35

TOWNSHIP 21 SOUTH RANGE 17 EAST.

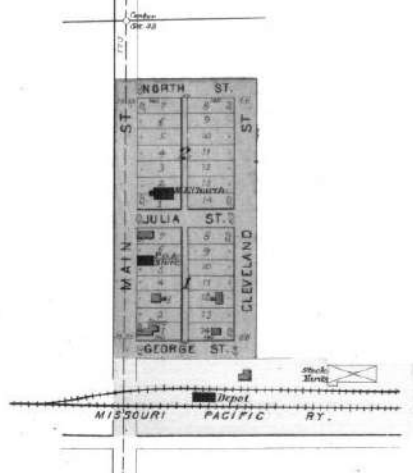
Scale 2 Inches to the Mile.

of the 6th Principal Meridian.



CROTTY

Scale 300 Ft. to 1 In.



TOWNSHIP 20 SOUTH RANGE 16 EAST

Scale 2 Inches to the Mile.

of the 6th Principal Meridian.



OTTUMWA

OTTUMWA TWP.

Scale 300 feet to one Inch

Sarah Minehouse

Jno. G. Shawbell

Geo. Fields

College Square

Jno. G. Shawbell

Eliz. McAffee

J. W. Bearers

NEBRASKA ST.

ST.

J. C. Ball

11	10
12	9
13	8
14	7

Sam^l Browning

J. T. Bennett
B. Despain

SCHOOL
School Ground

NEOSHO ST.

17	16
18	15
19	14
20	13
21	12
22	11
23	10
24	9
25	8
26	7
27	6
28	5
29	4
30	3
31	2
32	1

E. V. Mc Cormick

KANSAS ST.

Combs

7	6
8	5
9	4
10	3
11	2
12	1

19	18
20	17
21	16
22	15
23	14
24	13

29	28
30	27
31	26
32	25
33	24
34	23
35	22
36	21
37	20
38	19
39	18
40	17
41	16
42	15
43	14
44	13
45	12
46	11
47	10
48	9
49	8
50	7
51	6
52	5
53	4
54	3
55	2
56	1

Christian ST.
ST.

E. Clausen

SEMINARY ST.

Jno. Mc

7	6
8	5
9	4
10	3
11	2
12	1

Public Square

38	37
39	36
40	35
41	34
42	33
43	32
44	31
45	30
46	29
47	28
48	27
49	26
50	25
51	24
52	23
53	22
54	21
55	20
56	19
57	18
58	17
59	16
60	15
61	14
62	13
63	12
64	11
65	10
66	9
67	8
68	7
69	6
70	5
71	4
72	3
73	2
74	1

OTTUMWA ST.
ST.

CENTROPOLIS ST.

WASHINGTON ST.

Harrison Kelly

Est.

Geo. Smith
Est.

Sam^l Faylor

46	45
47	44
48	43
49	42
50	41
51	40
52	39
53	38
54	37
55	36
56	35
57	34
58	33
59	32
60	31
61	30
62	29
63	28
64	27
65	26
66	25
67	24

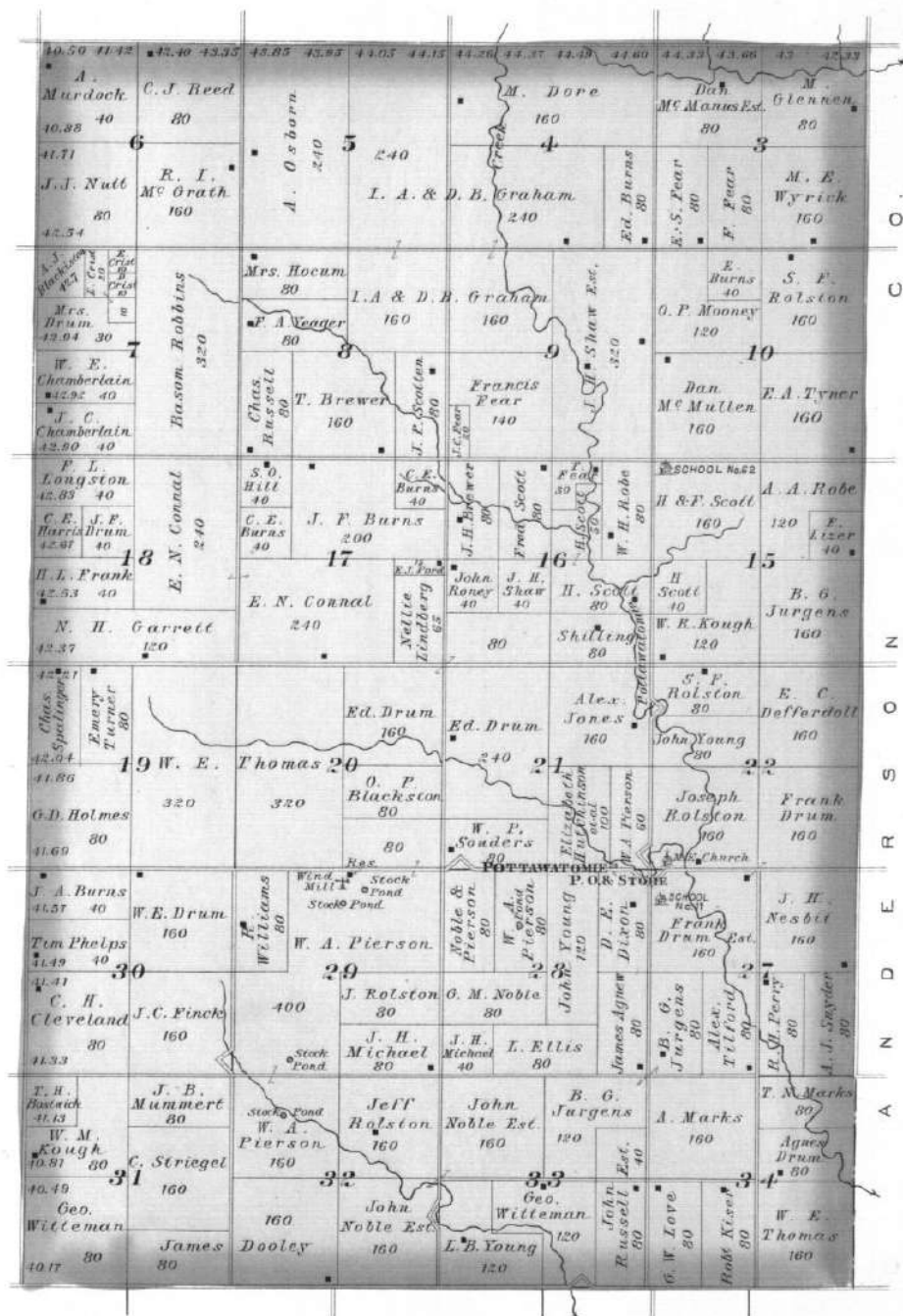
Sam^l Faylor
H. S. Walker
W. S. Walker
J. W. Mc Cormick
J. M. Despain

B. G. Fleming

TOWNSHIP 20 SOUTH RANGE 17 EAST

Scale 2 Inches to the Mile.

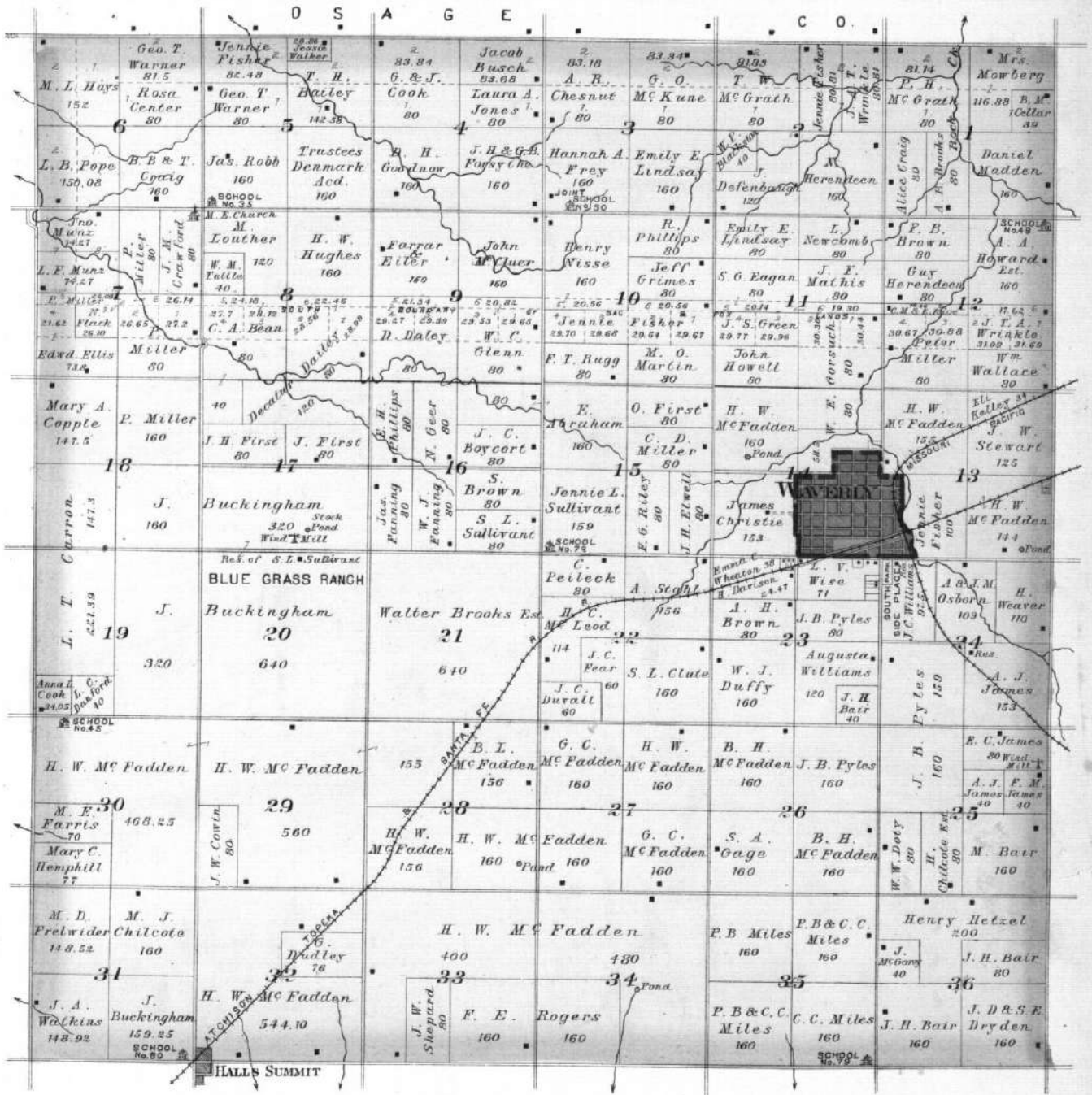
of the 6th Principal Meridian.



TOWNSHIP 19 SOUTH RANGE 16 EAST.

Scale 2 Inches to the Mile.

of the 6th Principal Meridian.



TOWNSHIP 19 SOUTH RANGE 15 EAST

Scale 2 Inches to the Mile.

of the 6th Principal Meridian.

