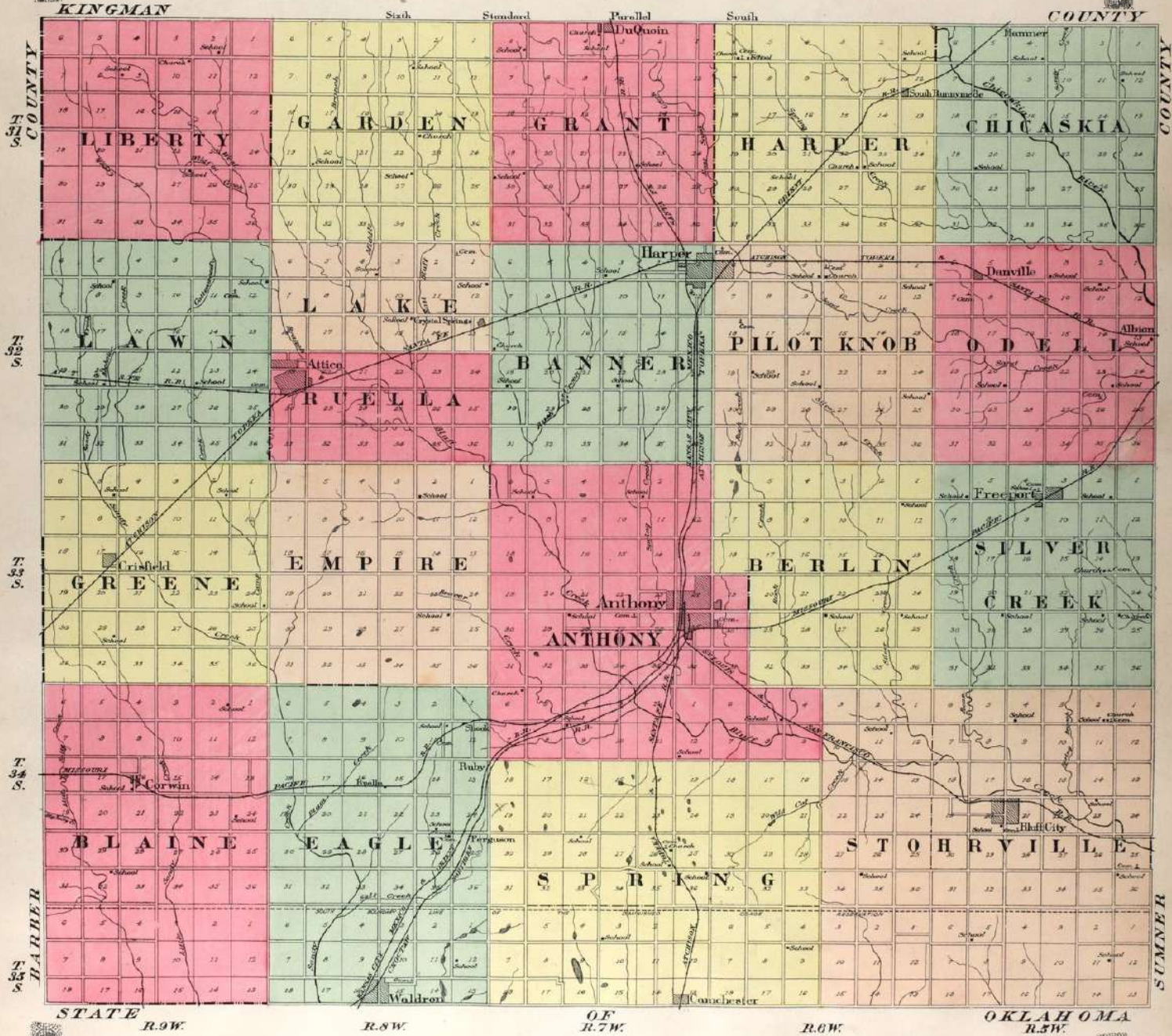


OUTLINE MAP OF HARPER COUNTY KANSAS

Copyright 1913 by Geo. A. Gile & Co.

Scale 3/64 of 1 inch to 1 mile



Lockwood 428 50
M. J. Hoath 80
J. M. Hunt 50
J. F. Mueller 80

Clarkson & Co. 30
W. G. Pugh 50
H. M. Witt 10

JENNINGS

ADD. 1, 2, 3, 4, 7, 8

SPRING

GARFIELD
HIGHLAND
WALNUT
LOCUST
VINE
SPRING
STEADMAN
MAIN
WASHINGTON
GRANT
EVANS
JACKSON
HAYES

5W, 1W, 4E, 5E, 12E
6W, 3W, 3E, 6E, 11E
7W, 1W, 2E, 7E, 10E
8W, 1W, 1E, 8E, 9E

ORIGINALS

ADD. 5, 6, 7, 8, 9, 10, 11, 12, 13, 14, 15, 16, 17, 18, 19, 20, 21, 22, 23, 24, 25, 26, 27, 28, 29, 30, 31, 32, 33, 34, 35, 36, 37, 38, 39, 40, 41, 42, 43, 44, 45, 46, 47, 48, 49, 50, 51, 52, 53, 54, 55, 56, 57, 58, 59, 60, 61, 62, 63, 64, 65, 66, 67, 68, 69, 70, 71, 72, 73, 74, 75, 76, 77, 78, 79, 80, 81, 82, 83, 84, 85, 86, 87, 88, 89, 90, 91, 92, 93, 94, 95, 96, 97, 98, 99, 100

E. L. Nock
M. J. Small
Alice Hills
L. L. M. Frack
T. S. Bell
B. M. Pears
F. Comes
C. R. Comes
F. Hager

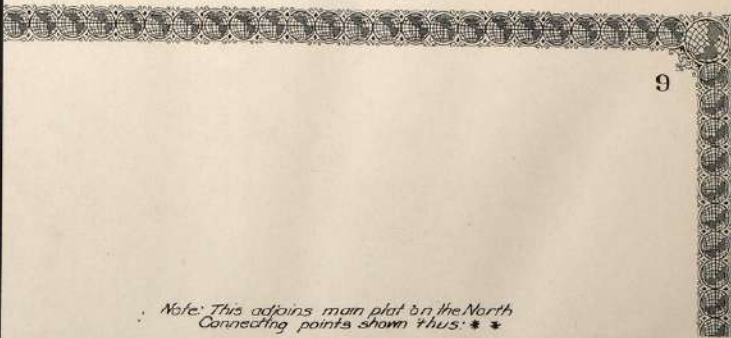
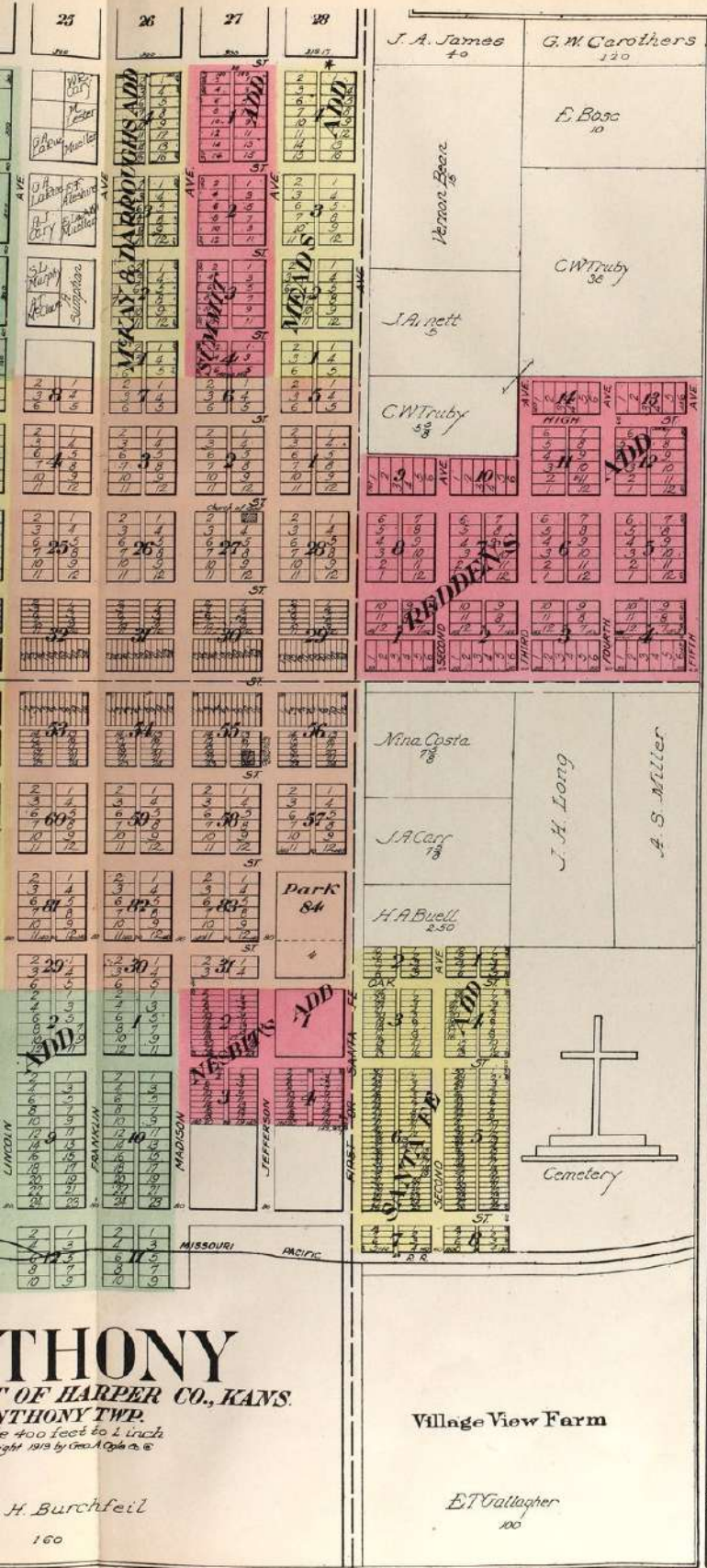
J. B. Vandeln 12

MOORE & MEYER 159

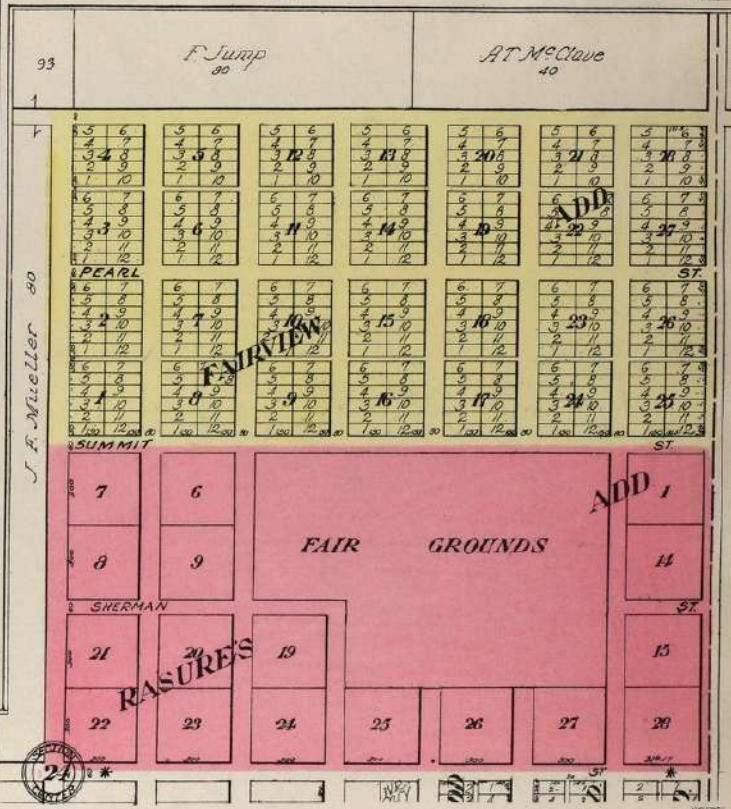
ANTHONY
COUNTY SEAT OF HARPER CO.
ANTHONY TWP.
Scale 400 feet to 1 inch
Copyright 1919 by O. A. Burchfeil

L. H. Burchfeil

160



Note: This adjoins main plat to the North
Connecting points shown thus: **



ANTHONY
OF HARPER CO., KANS.
ANTHONY TWP.
Scale 400 feet to 1 inch
Copyright 1912 by Geo. A. Gaylor, Inc.

H. Burchfeil
160

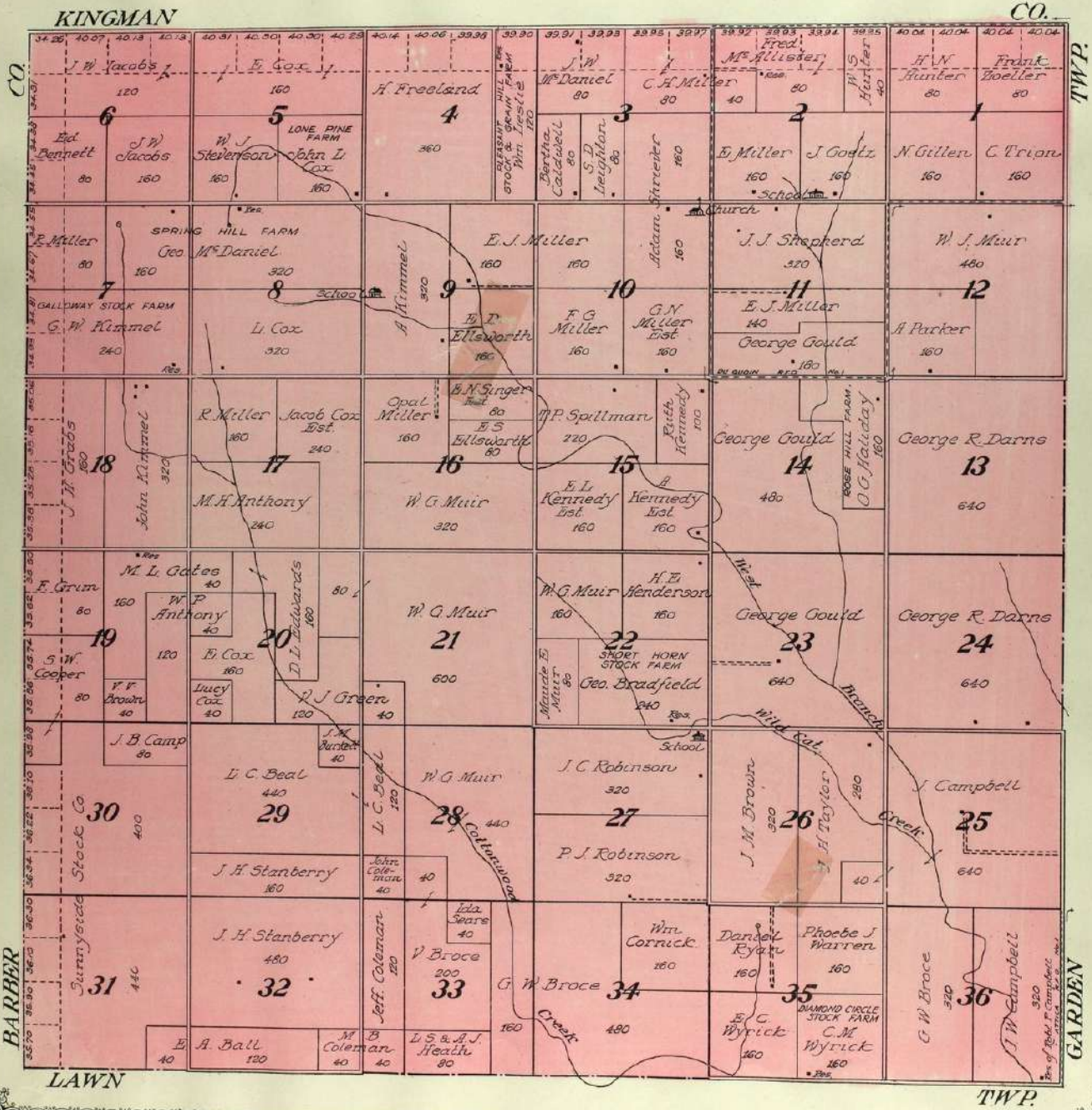
Village View Farm

E.T. Gallagher
100

MAP OF
LIBERTY
TOWNSHIP

Scale 2 inches to 1 mile

Township 31 South, Range 9 West of the 6th P. M.

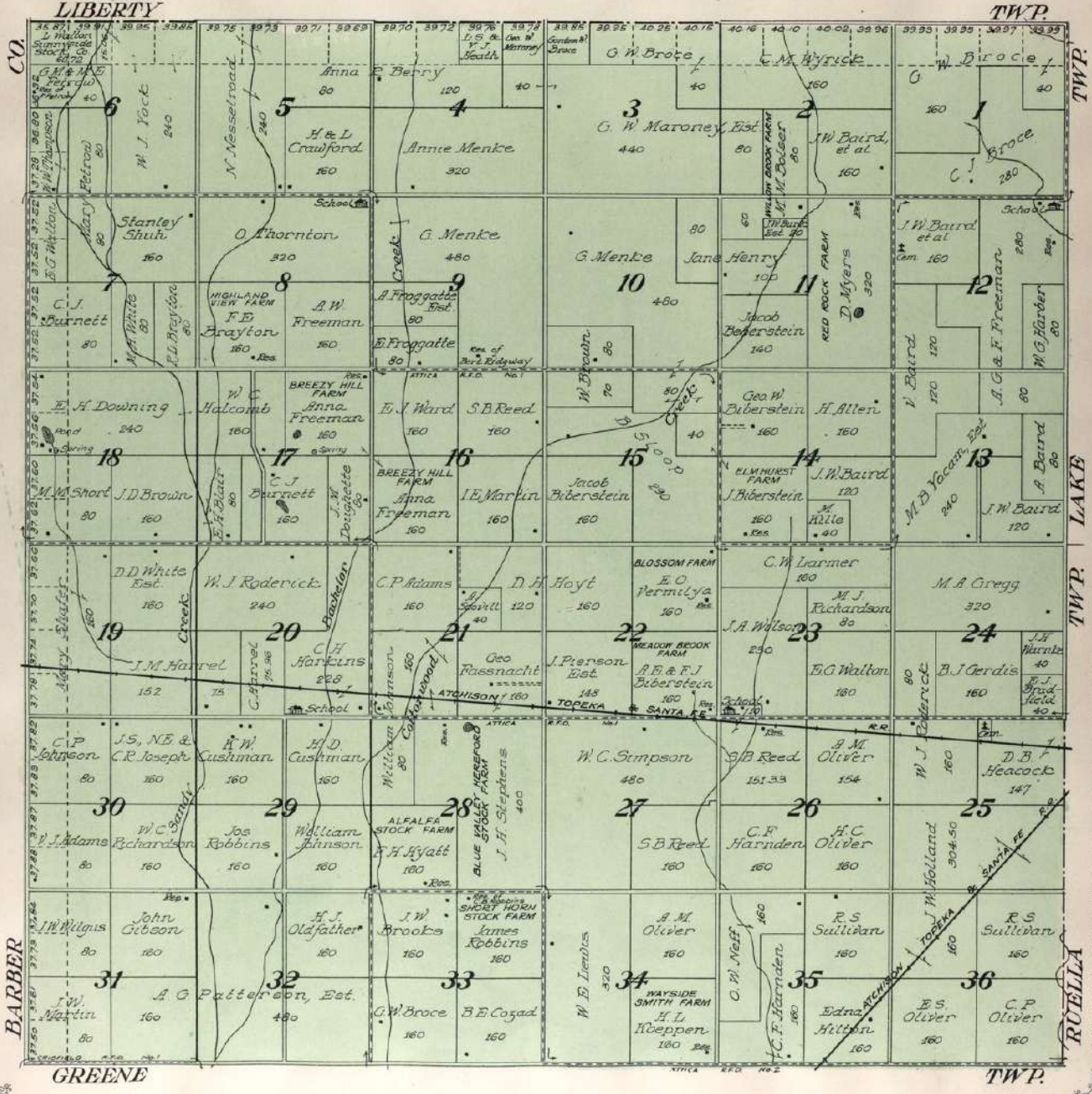




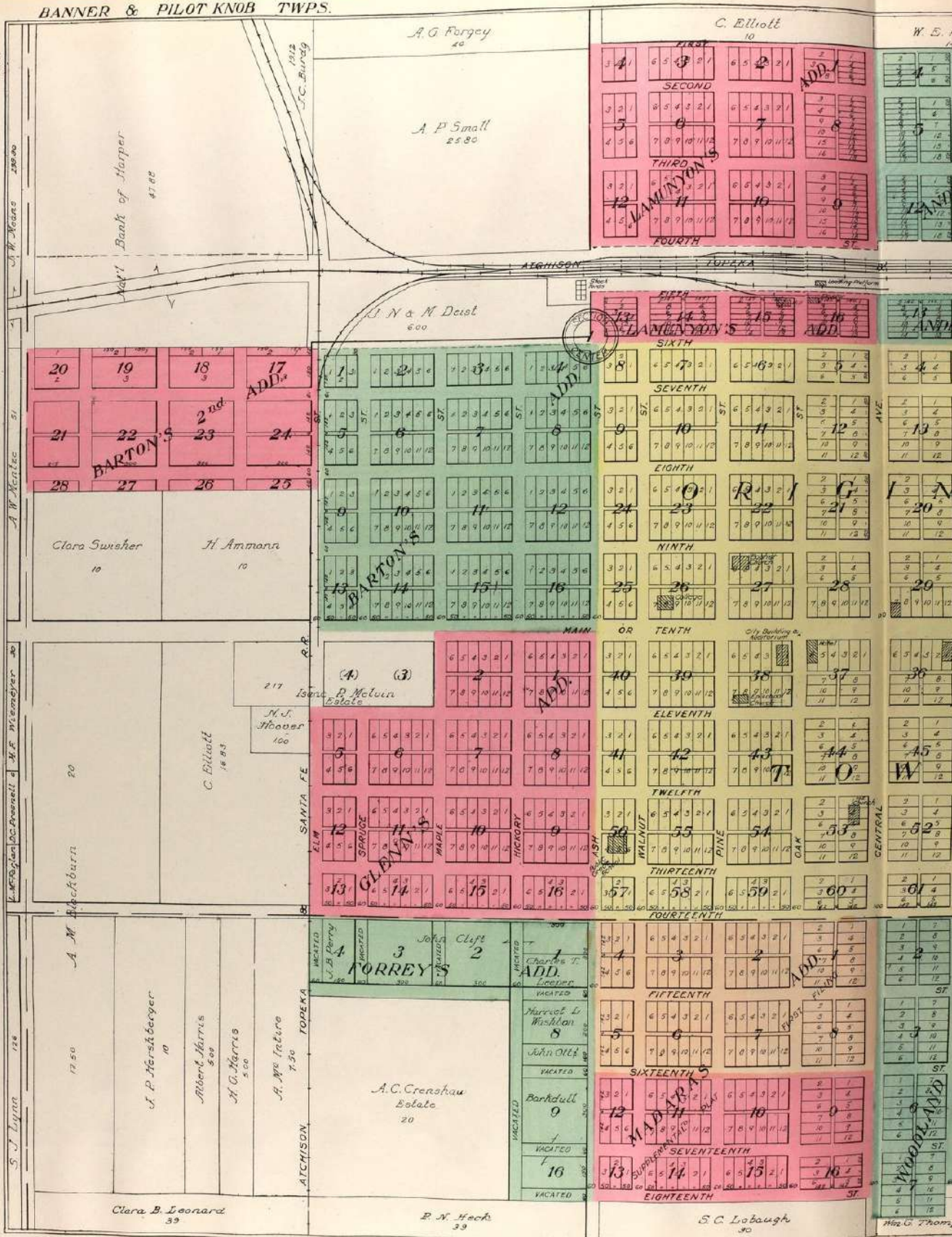
MAP OF
LAWN
 TOWNSHIP

Scale 2 inches to 1 mile

Township 32 South, Range 9 West of the 6th P. M.



BANNER & PILOT KNOB TWPS.



Scale 200 ft = 1 inch



HARPER

BANNER & PILOT KNOB TOWNSHIPS.
Scale reduced to 1 inch
Copyright 1909 by Geo. A. Cagle & Co.

Harper Dairy Farm
A. Boyler
110.55

Geo. R. Darnes 160

Lucas Hosteller 40

KANSAS CITY
Lucy Kelly MEXICO

ADD. 1
8
9
10
11
12

W. E. Palmer 14 1/2
Anna G. Elson 10
ANDERSON'S
ST.
ST.
ST.
FOURTH ST.

Frank E. Williams
Clara Andrews 4

C. Iron 65.66
John Zumbrum 2.13

J. E. Casabeer Estate

WATER

WATER

J. E. Casabeer, Est.

Bennell, Est.

John C. Miller 52

ADD. 10
ANDERSON'S
ST.

12
13
14
15
16

21
20
19
18
17
30
31
32

37
38
39
40
41
42
43
44
45
46
47
48

53
54
55
56
57
58
59
60
61
62
63
64

WINDYLAND
ST.
ST.
ST.
ST.

ADD. 4
ST.
ST.
ST.

10
11
12
13
14
15
16
17
18
19
20
21
22

BANGER ADD.

2
3
4
5
6
7
8
9
10
11
12

MARTIN'S
SADAMS
JACKSON
MARTIN'S
VAN BUREN
HARRISON

J. S. WELLS
J. E. MILLER
J. R. HUSKY
J. F. EAKIN
ANNA E. EAKIN

SPENCER'S
S. HURSEL
E. HARRIS
VANLANDINGHAM'S
ADD.

1
2
3
4
5
6
7
8
9
10
11
12
13
14
15
16
17
18

(Out-Lot 3)
12 ADD.

ROTHWELL'S
5
4
3
2
1

4
3
2
1
5
4
3
2
1
5
4
3
2
1
5
4
3
2
1

4
3
2
1
5
4
3
2
1
5
4
3
2
1
5
4
3
2
1

8
7
6
5
4
3
2
1
10
11
12
13
14
15
16

CORNELL
1
2
3
4
5
6
7
8
9
10
11
12
13
14
15
16

160
150
140
130
120
110
100
90
80
70
60
50
40
30
20
10

Township 33 South, Range 9 West of the 6th P. M.



BLUFF CITY

STOHRVILLE TWP.

Scale 300ft to 1 inch



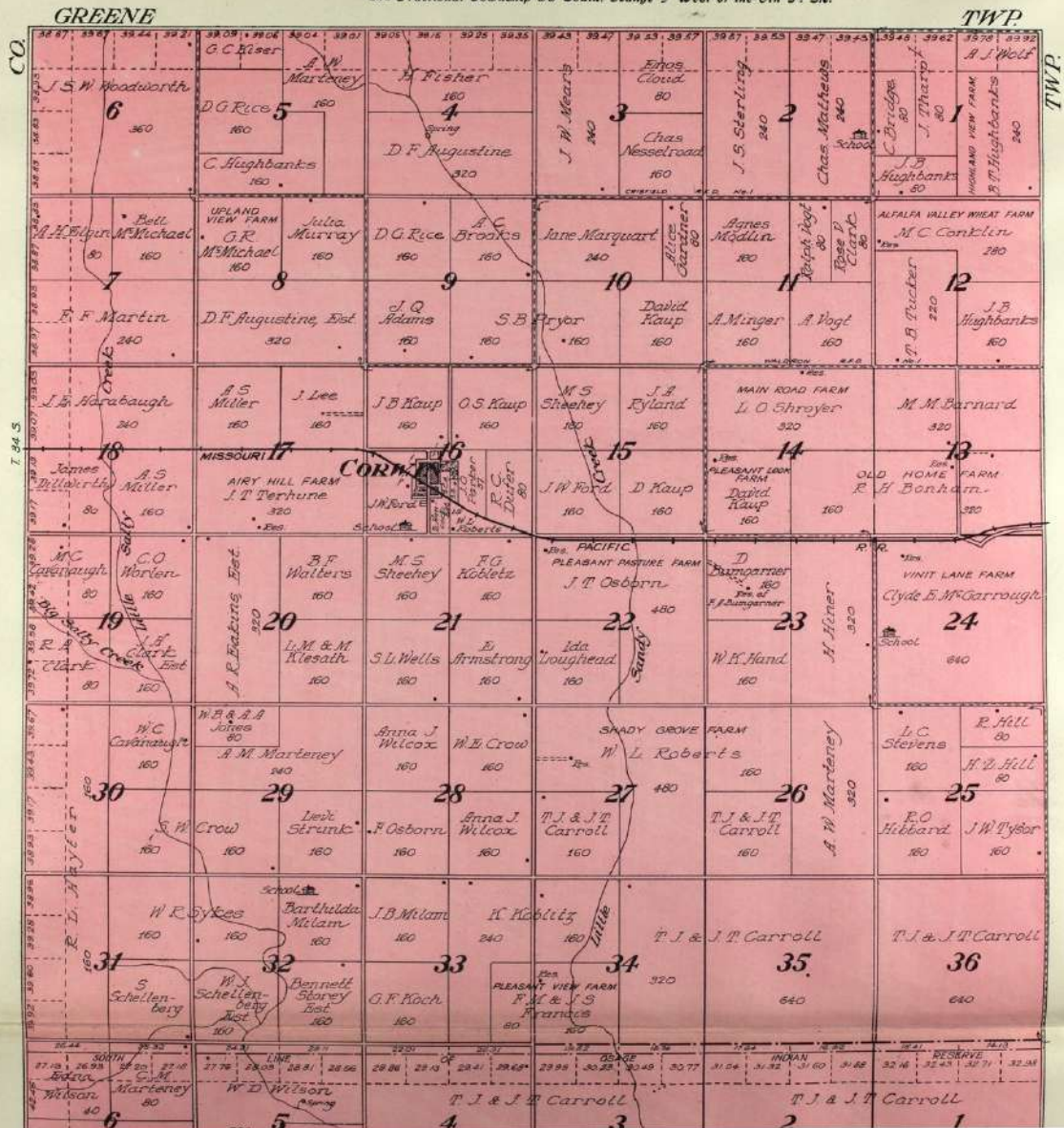
Jess, Jr.
200.66

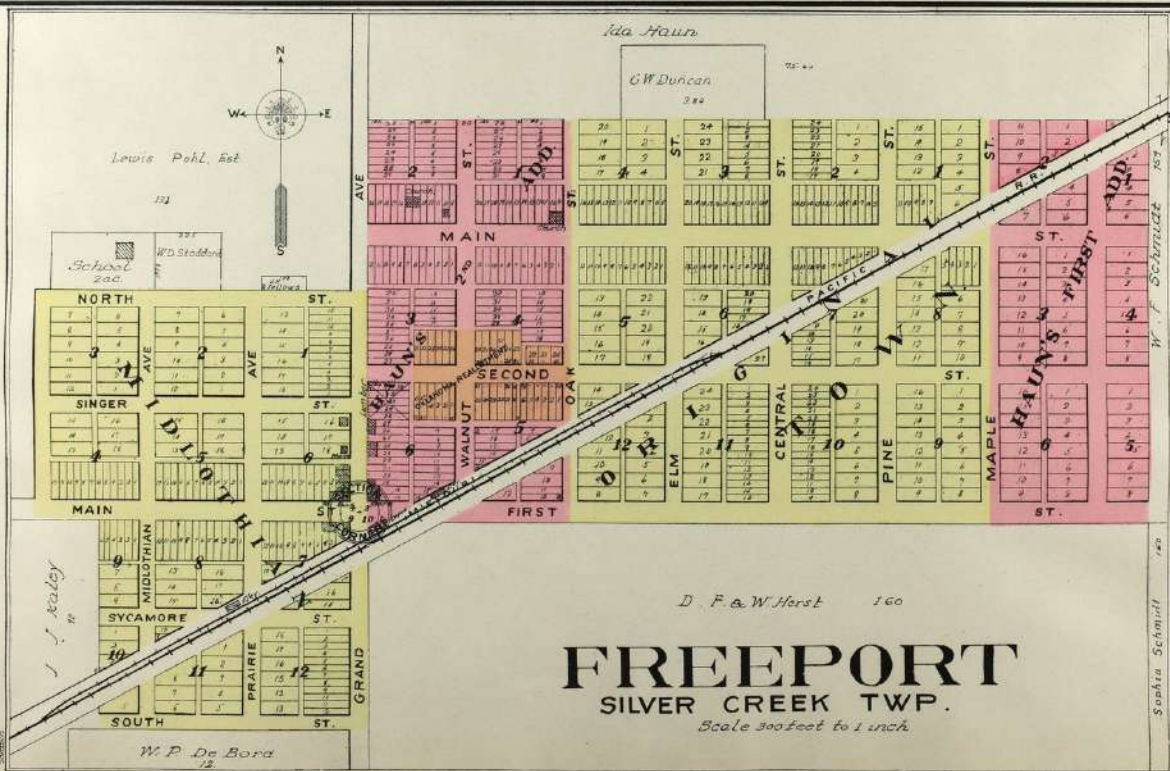
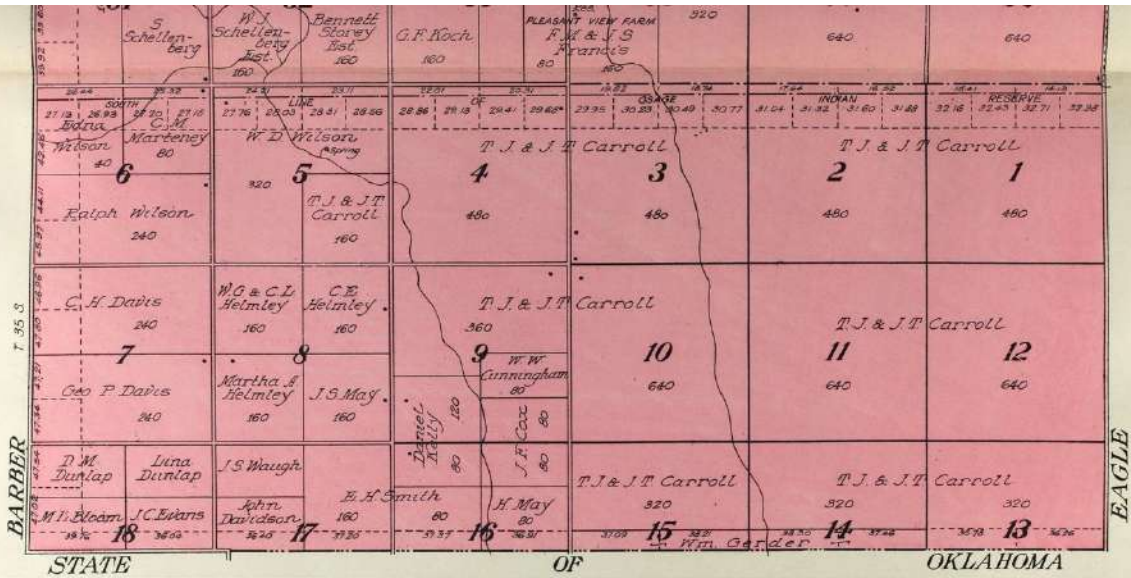
W. W. Miller, et al.
204.23


MAP OF
BLAINE
 TOWNSHIP

Scale 2 inches to 1 mile

Township 34 South, Range 9 West
 and Fractional Township 33 South, Range 9 West of the 6th P. M.

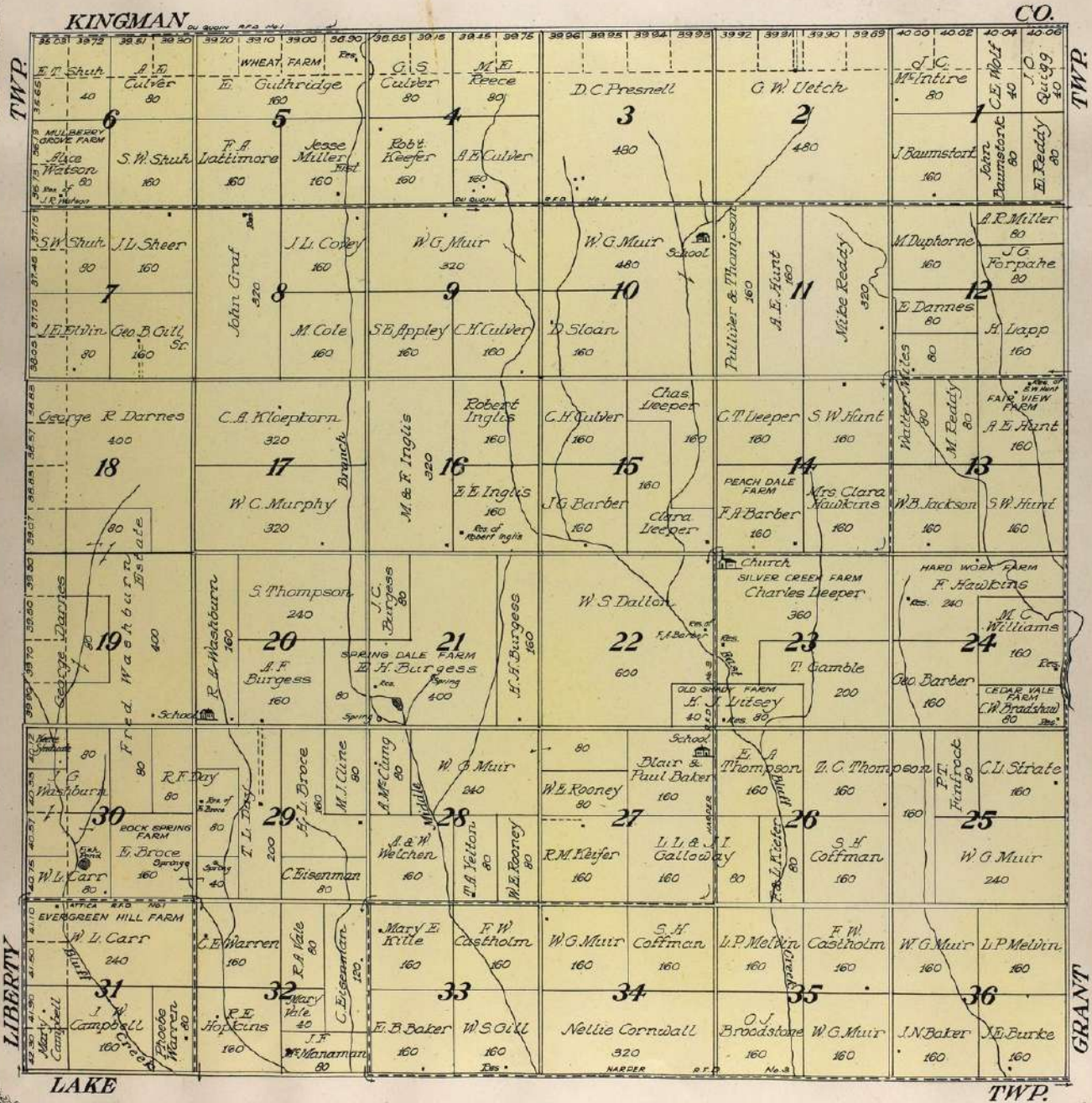






MAP OF
GARDEN
 TOWNSHIP
 Scale 2 inches to 1 mile

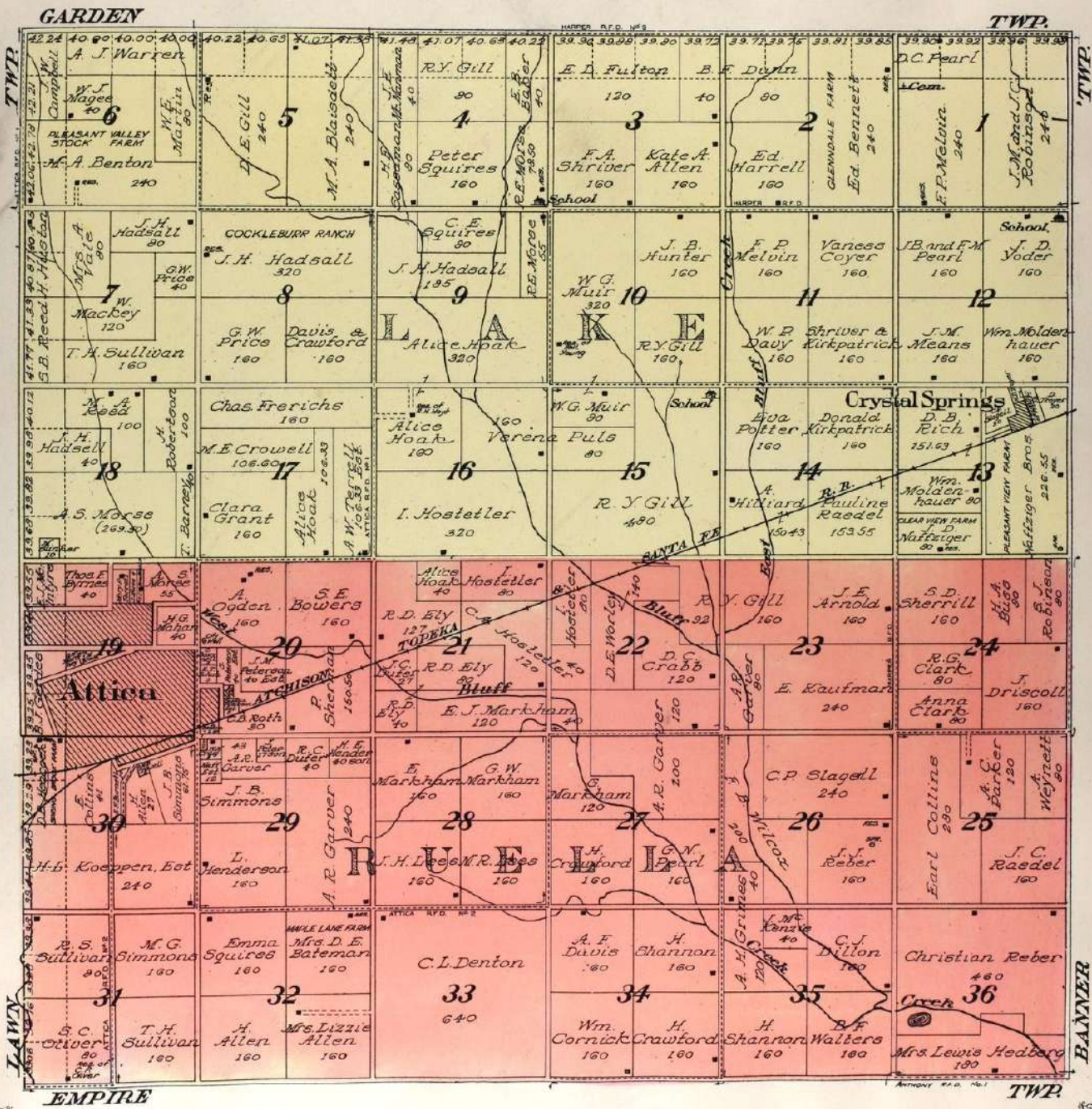
Township 31 South, Range 8 West of the 6th P. M.





MAP OF
LAKE and RUELLA
TOWNSHIPS
 Scale 2 inches to 1 mile

Township 32 South, Range 8 West of the 6th P. R.

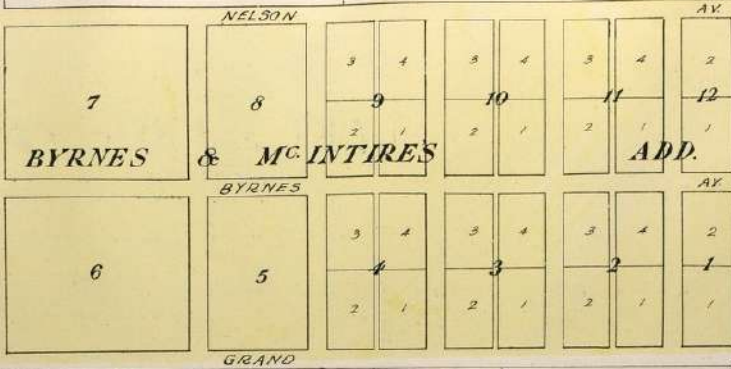


E. J. McIntire
39.55

Thos. F. Byrnes
40

Mary P. Terrell
10 4
Morse
1 11 4
B. G. Brinkman

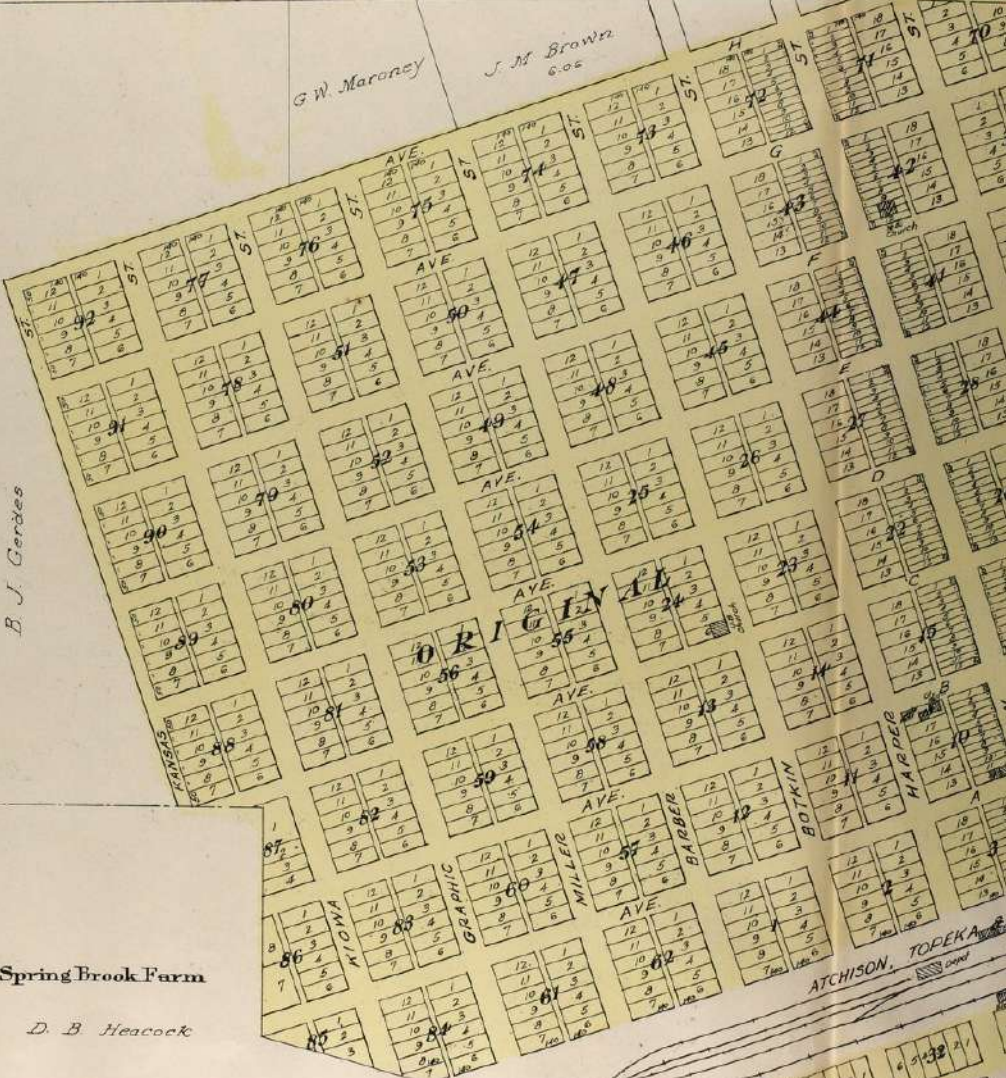
M. A. Gregg
320



J. H. Marabe
40

G. W. Maroney
J. M. Brown
6.02

E. J. Broadfield
40



147 D. B. Heacock

Spring Brook Farm

D. B. Heacock

E. Collins 41

E. F. Burnett

ATTICA

RUELLA TWP.
Scale 310 feet to 1 inch
Copyright 1919 by Geo. A. Ogden & Co.

A. S. Morse 55

H. G. Mahan
40

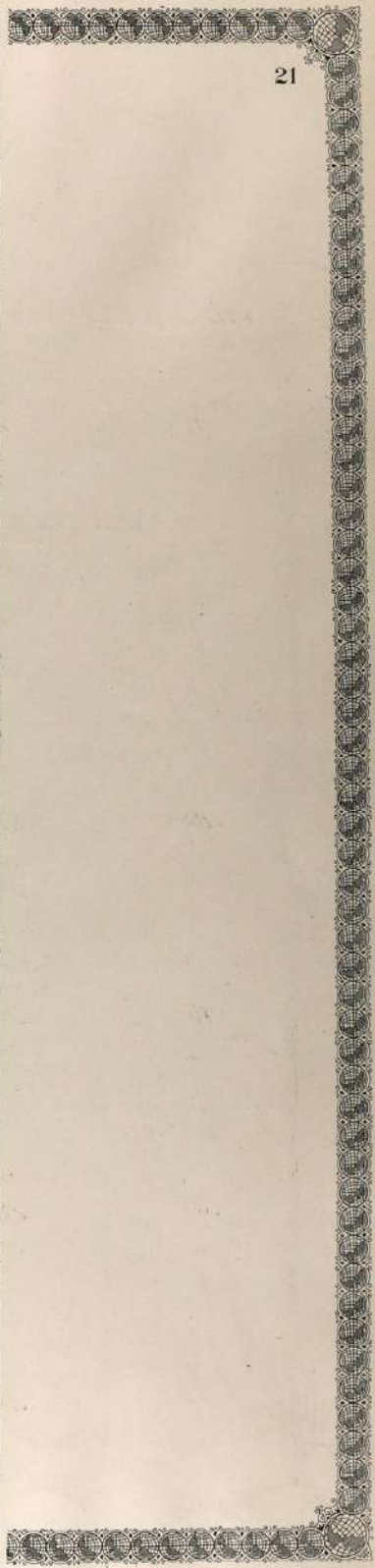
WEST BLUE CREEK
A. Ogden 160

Map section showing streets: NELSON AV., ON'S, BYRNES AV., and ADD. Lot numbers are arranged in a grid pattern.

Mary E. Pool 24

Main map section showing a grid of streets including: ST. G, ST. F, ST. E, ST. D, ST. C, ST. B, ST. A, ST. H, ST. I, ST. J, ST. K, ST. L, ST. M, ST. N, ST. O, ST. P, ST. Q, ST. R, ST. S, ST. T, ST. U, ST. V, ST. W, ST. X, ST. Y, ST. Z, ST. 1, ST. 2, ST. 3, ST. 4, ST. 5, ST. 6, ST. 7, ST. 8, ST. 9, ST. 10, ST. 11, ST. 12, ST. 13, ST. 14, ST. 15, ST. 16, ST. 17, ST. 18, ST. 19, ST. 20, ST. 21, ST. 22, ST. 23, ST. 24, ST. 25, ST. 26, ST. 27, ST. 28, ST. 29, ST. 30, ST. 31, ST. 32, ST. 33, ST. 34, ST. 35, ST. 36, ST. 37, ST. 38, ST. 39, ST. 40, ST. 41, ST. 42, ST. 43, ST. 44, ST. 45, ST. 46, ST. 47, ST. 48, ST. 49, ST. 50, ST. 51, ST. 52, ST. 53, ST. 54, ST. 55, ST. 56, ST. 57, ST. 58, ST. 59, ST. 60, ST. 61, ST. 62, ST. 63, ST. 64, ST. 65, ST. 66, ST. 67, ST. 68, ST. 69, ST. 70, ST. 71, ST. 72, ST. 73, ST. 74, ST. 75, ST. 76, ST. 77, ST. 78, ST. 79, ST. 80, ST. 81, ST. 82, ST. 83, ST. 84, ST. 85, ST. 86, ST. 87, ST. 88, ST. 89, ST. 90, ST. 91, ST. 92, ST. 93, ST. 94, ST. 95, ST. 96, ST. 97, ST. 98, ST. 99, ST. 100.

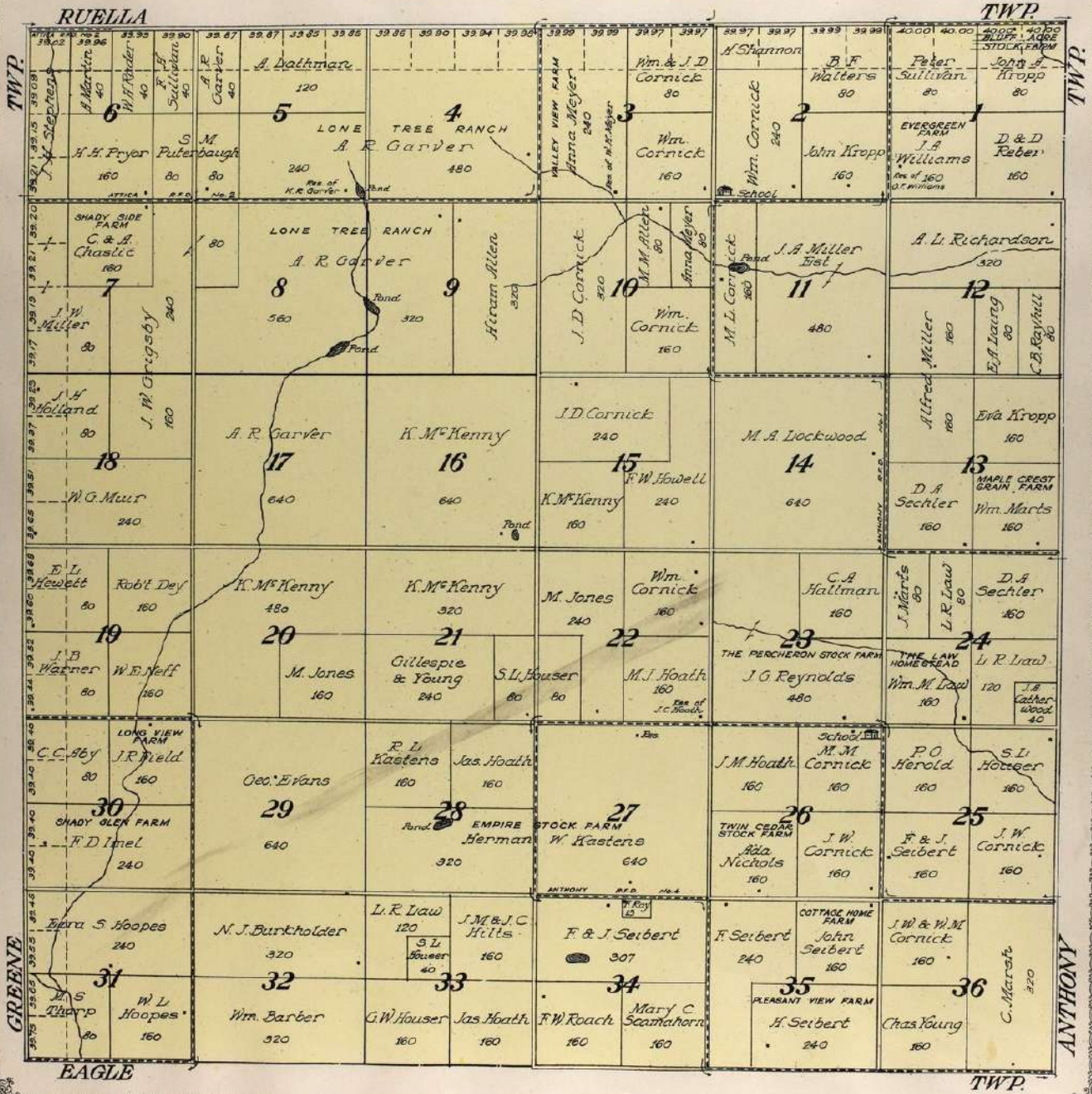
Map section showing streets: HAMILTON ST., YORK ST., BERRY'S ADD., MADISON ST., PEARL ST., CHERRY ST., HARPER ST., and SANTA FE R.R. Owners listed include: C. Scannell, E. T. Schutz, S. Peterson, Est., F. A. Druce, Sophia Peterson, Est., O. Benton, W. N. Craig, J. B. Simmons, D. H. B. Crowell, H. Allen, E. F. Burnett, Nelf, Est., and A. R. Gardner.





MAP OF
EMPIRE
 TOWNSHIP
 Scale 2 inches to 1 mile

Township 33 South, Range 8 West of the 6th P. M.



C. A. Hayter
320

I. B. Zeller
143

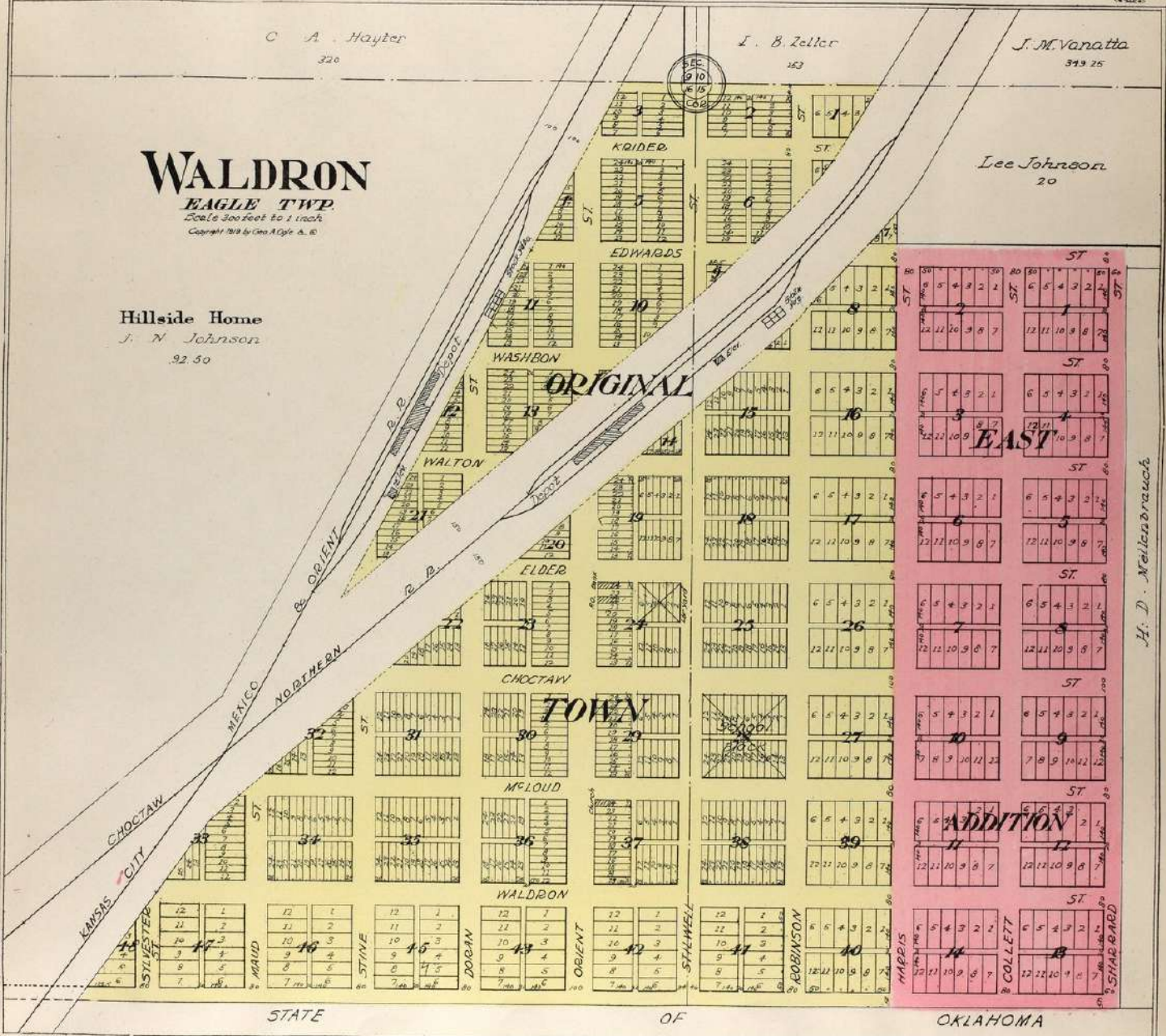
J. M. Vanatta
319 25

WALDRON

EAGLE TWP.
Scale 300 feet to 1 inch
Copyright 1918 by Geo. A. Ogle & Co.

Hillside Home
J. N. Johnson
.92.50

Lee Johnson
20

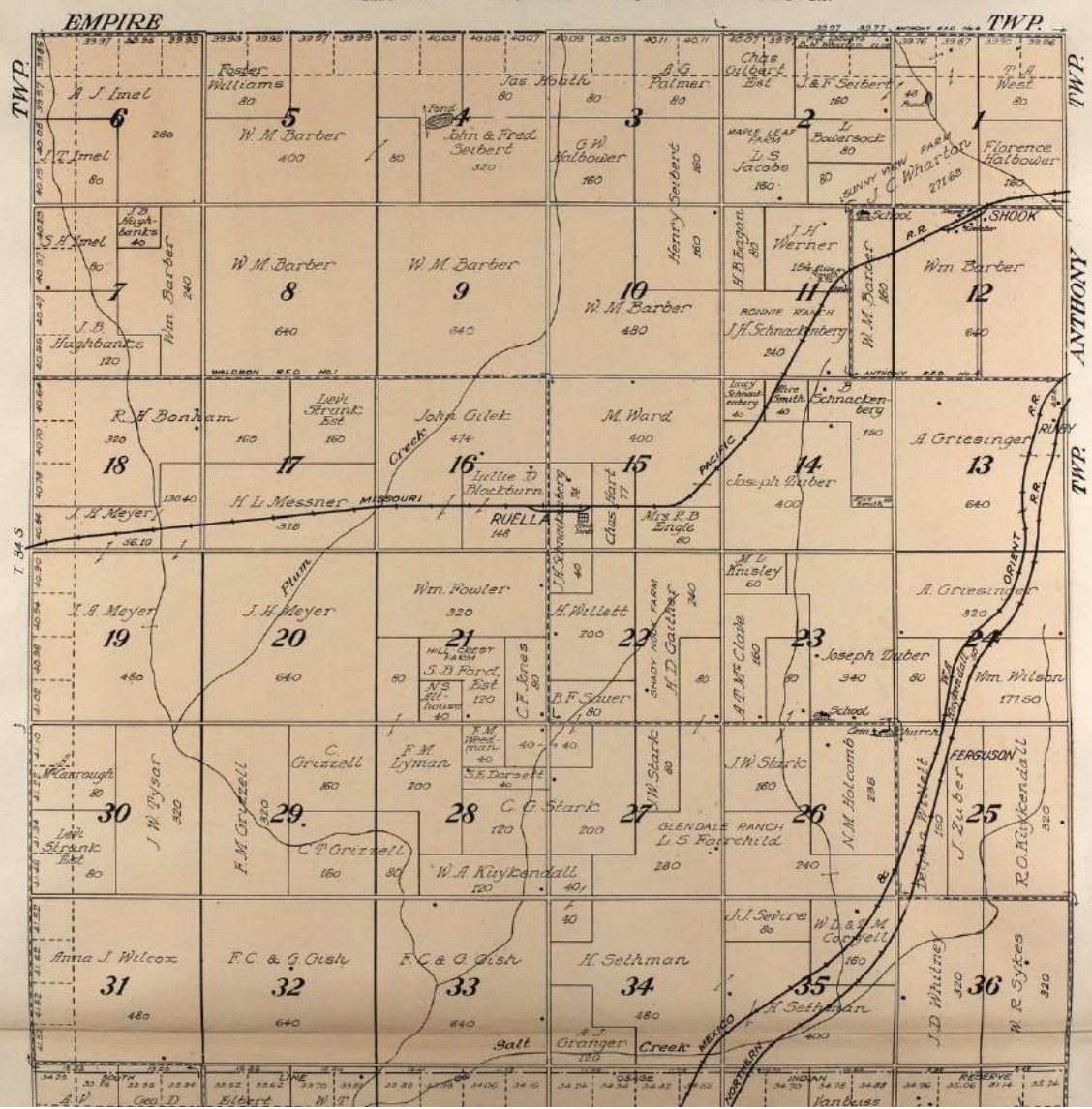


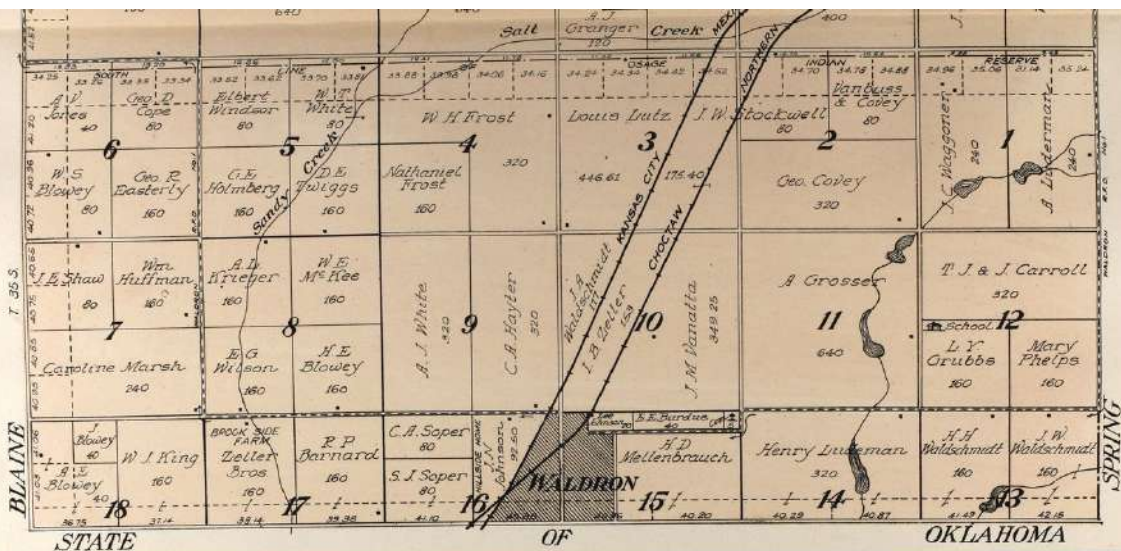
H. D. Melton & Co.



MAP OF
EAGLE
TOWNSHIP
 Scale 2 inches to 1 mile

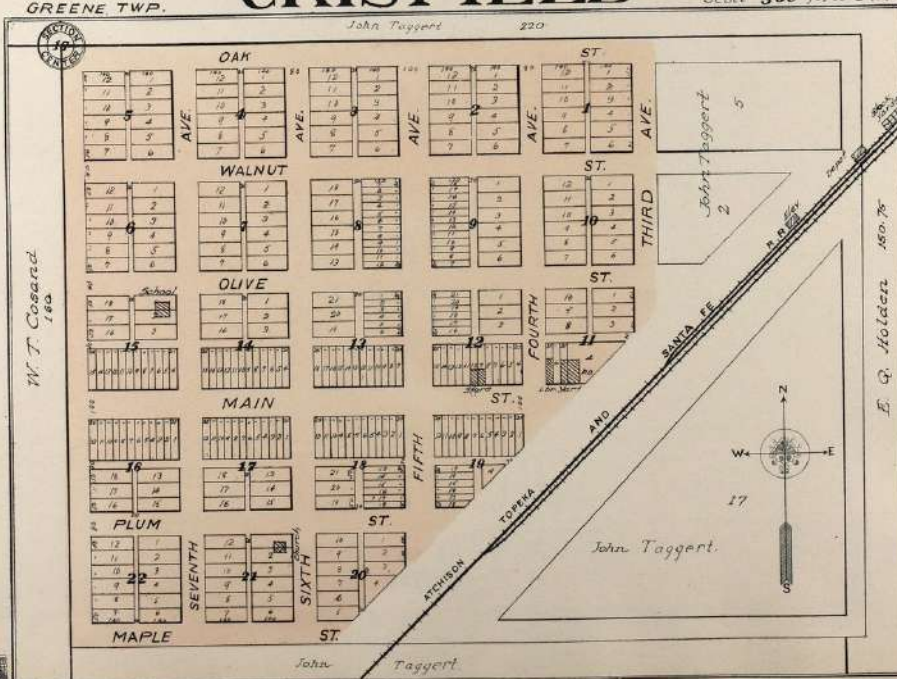
Township 24 South, Range 8 West
 and Fractional Township 25 South, Range 8 West of the 6th P. M.





CRISFIELD

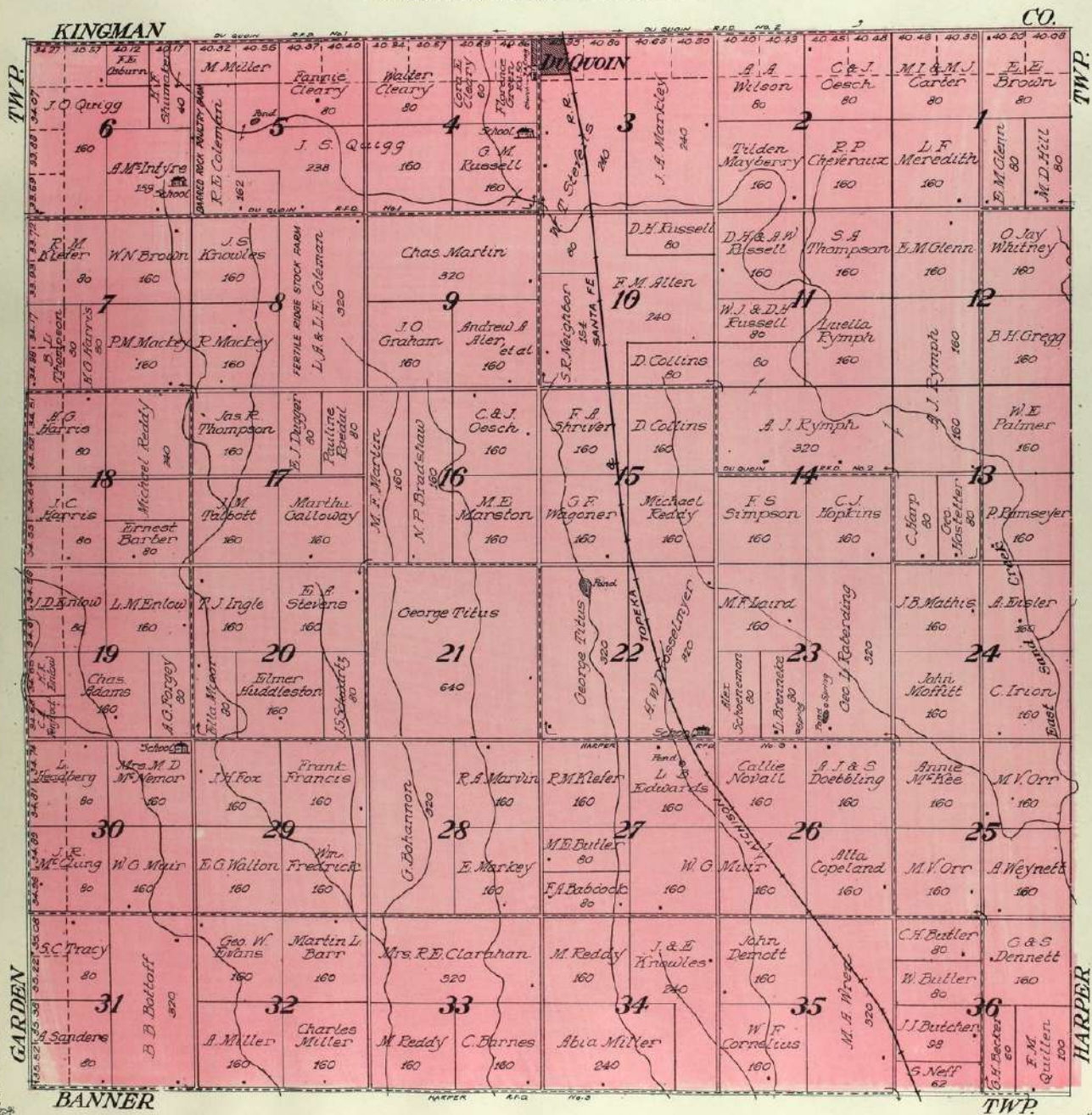
GREENE TWP. Scale 300 ft. to 1 in.



MAP OF
GRANT
TOWNSHIP

Scale 2 inches to 1 mile

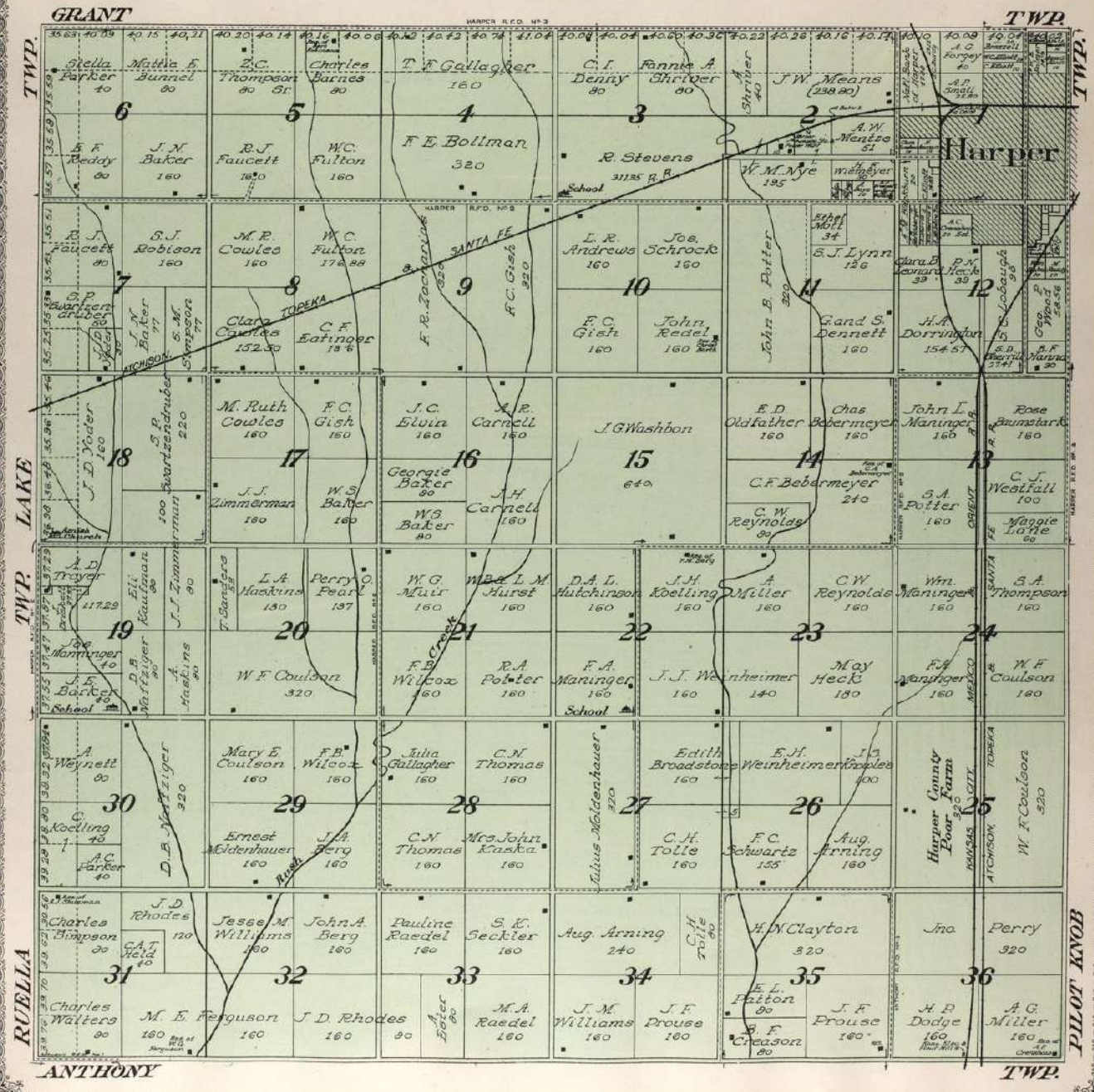
Township 51 South, Range 7 West of the 6th P. M.





MAP OF
BANNER
 TOWNSHIP
 Scale 2 inches to 1 mile

Township 62 South, Range 7 West of the 6th P. M.

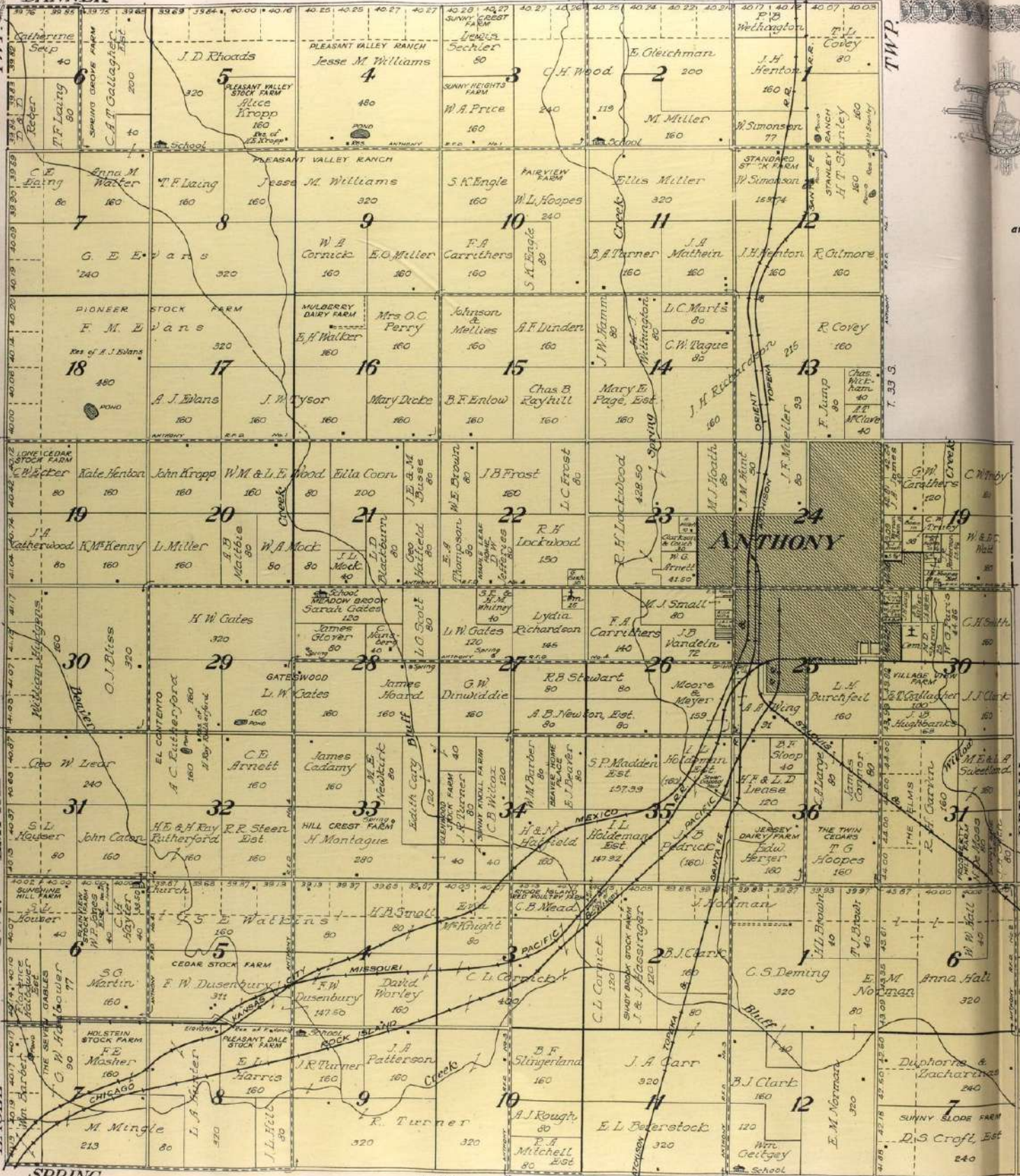


TWP

TWP

EMPIRE

EAGLE





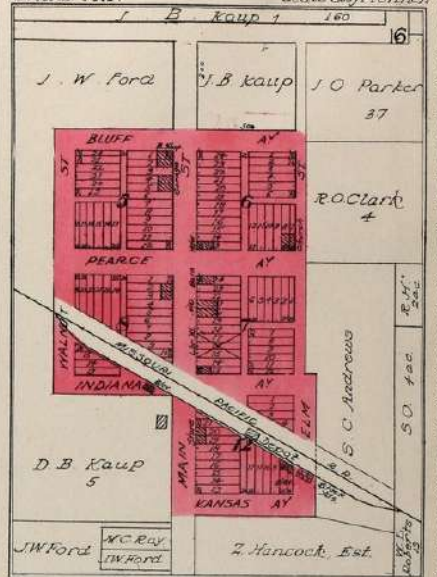
MAP OF ANTHONY TOWNSHIP

Scale 2 inches to 1 mile

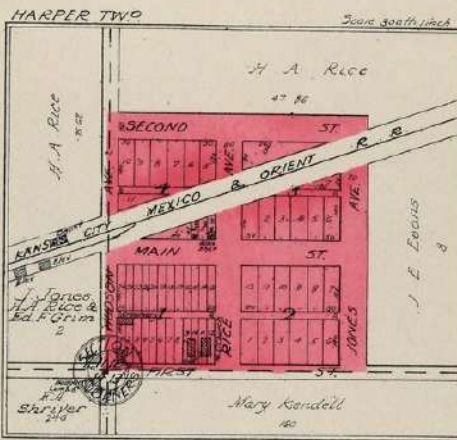
Township 33 South, Range 7 West,
 Part of Township 33 South, Range 6 West
 and Part of Township 34 South, Ranges 6 and 7 West of the 6th P. M.

CORWIN

BLAINE TWP. Scale 300 ft to 1 inch

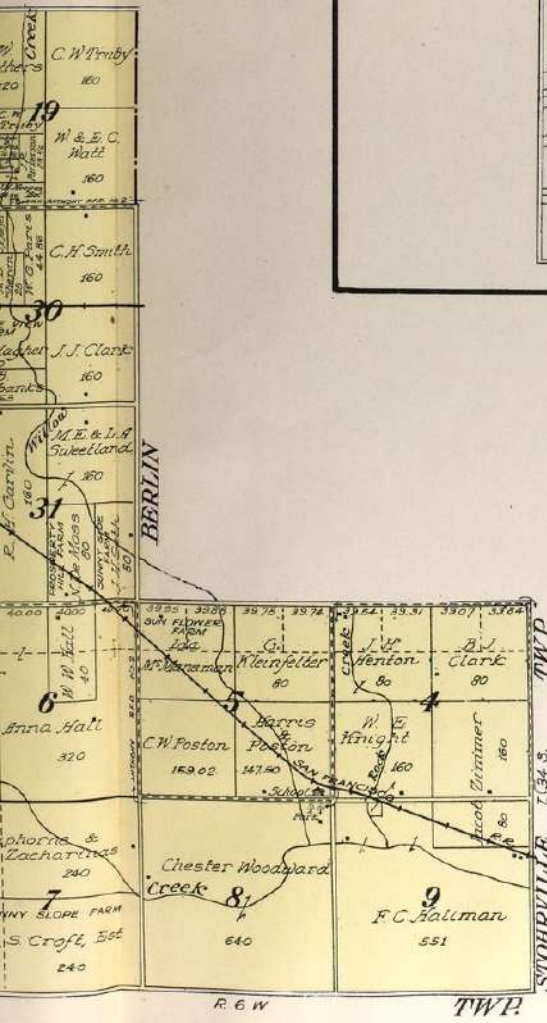
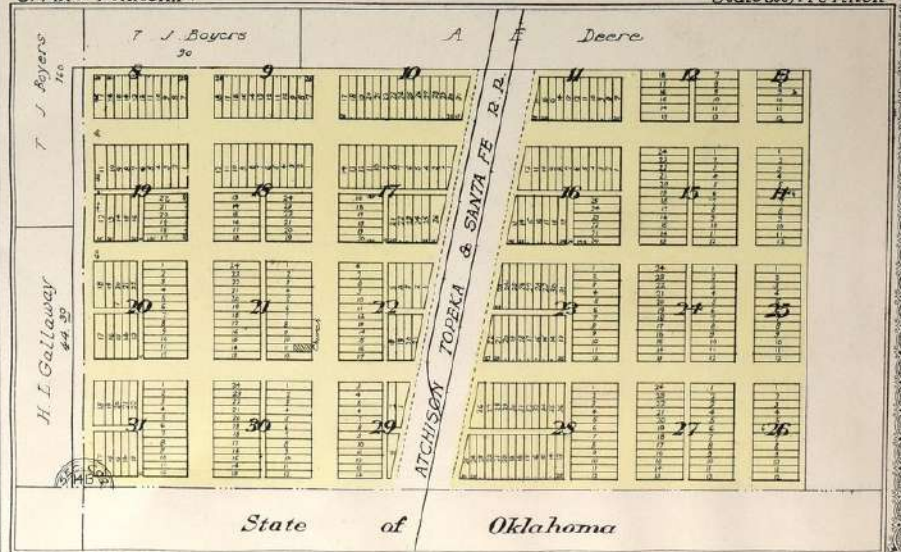


SOUTH RUNNYMEDE



Camchester

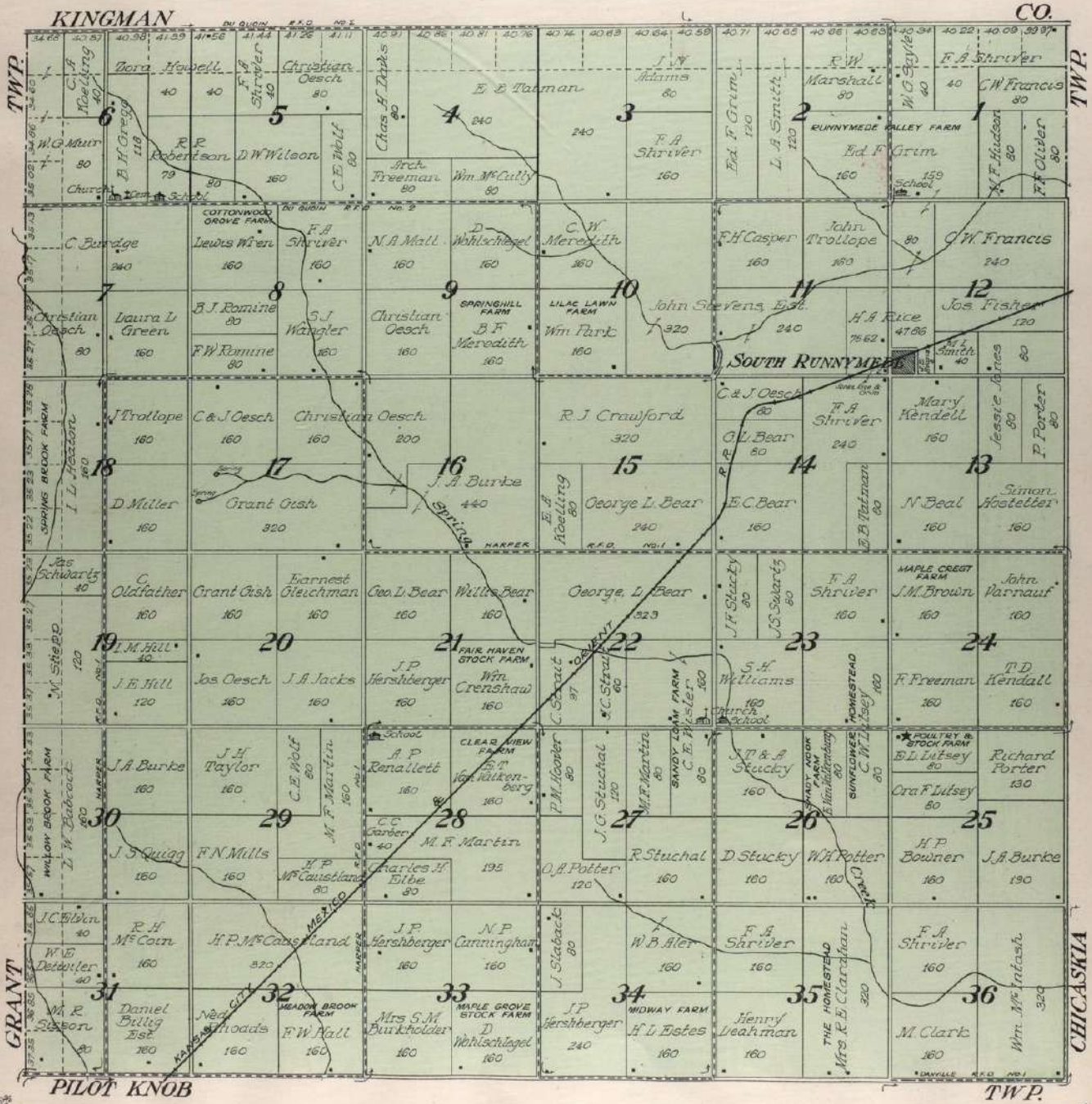
SPRING TOWNSHIP. Scale 300 ft to 1 inch



MAP OF HARPER TOWNSHIP

 Scale 2 inches to 1 mile

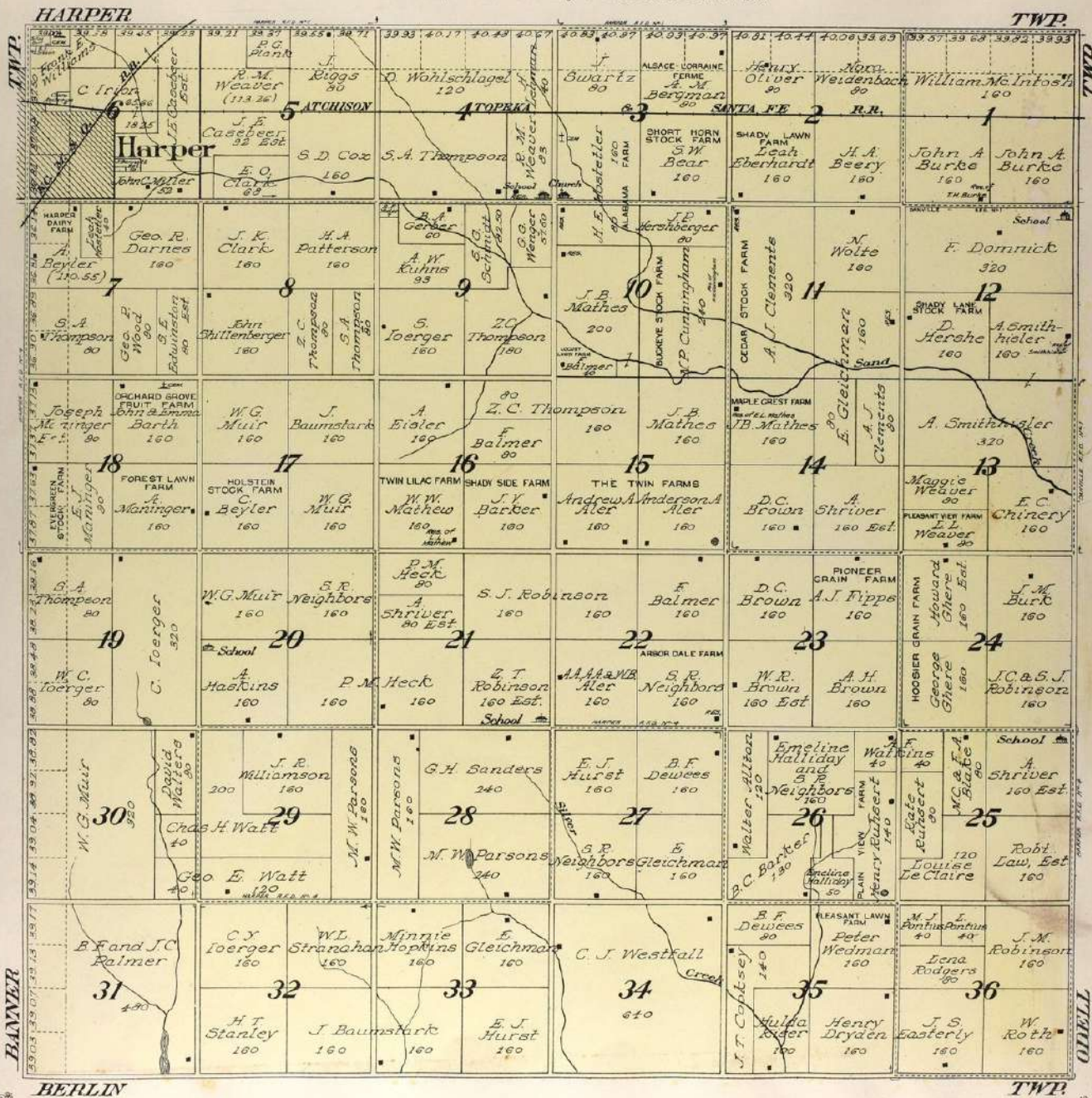
Township 31 South, Range 6 West of the 6th P. M.



MAP OF
PILOT KNOB
TOWNSHIP

Scale 2 inches to 1 mile

Township 22 South, Range 6 West of the 6th P. M.



KANSAS STATE HISTORICAL SOCIETY

BANNER

ODELL

BERLIN

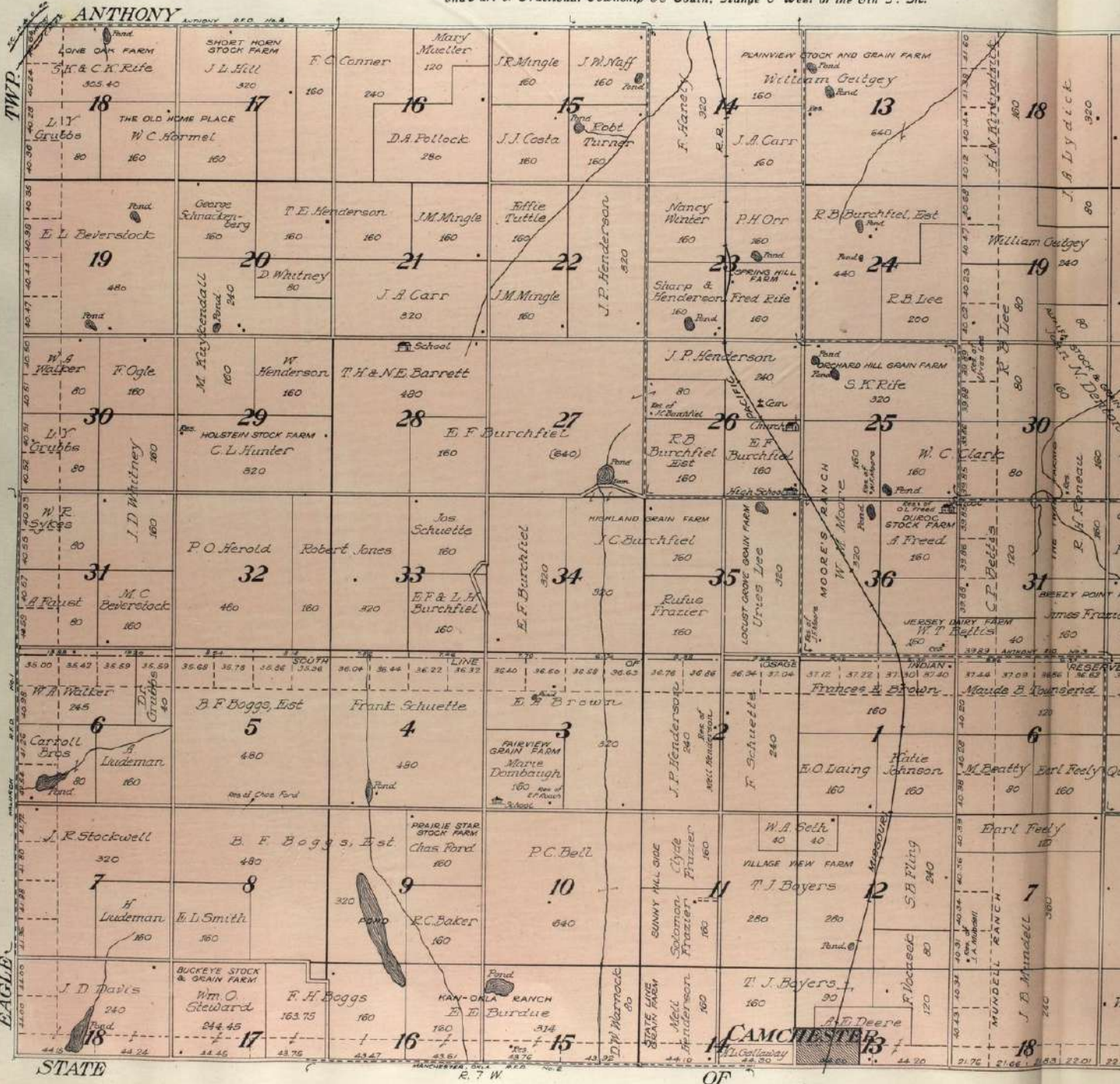
TWP.

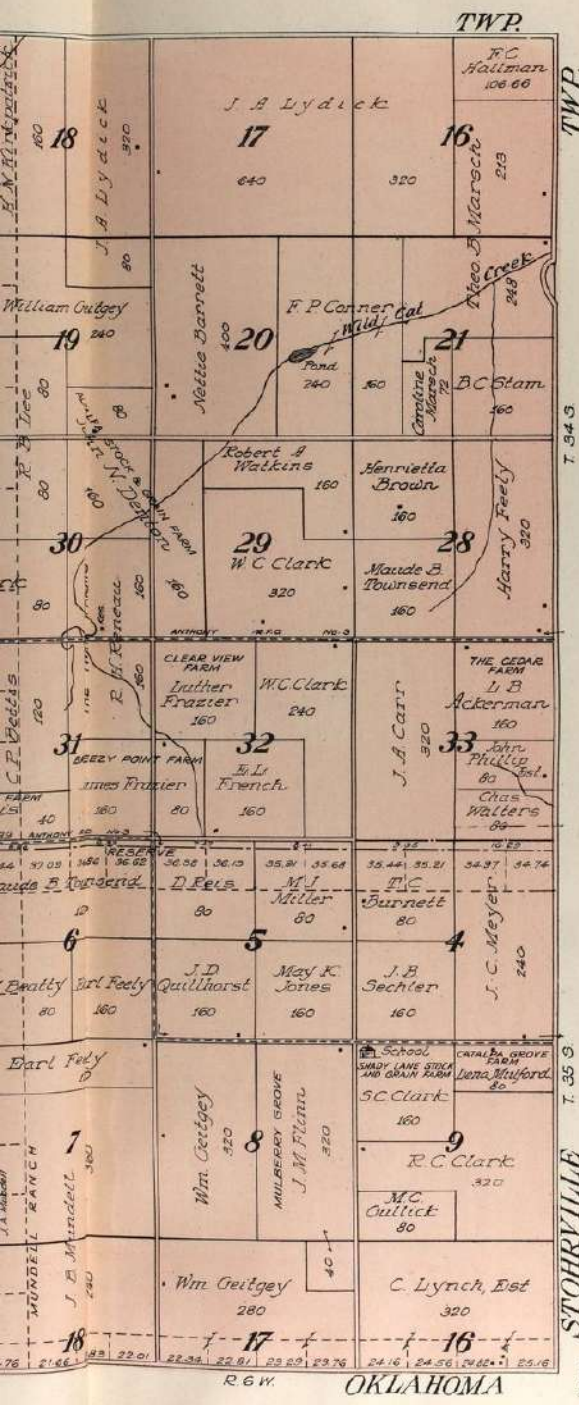


MAP OF
SPRING
 TOWNSHIP

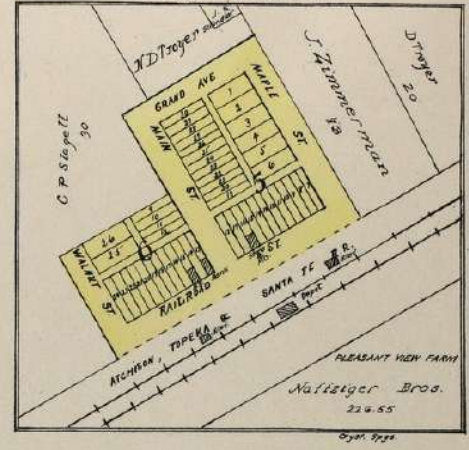
Scale 2 inches to 1 mile

Part of Township 34 South, Ranges 6 and 7 West,
 Fractional Township 33 South, Range 7 West
 and Part of Fractional Township 33 South, Range 6 West of the 6th P. M.

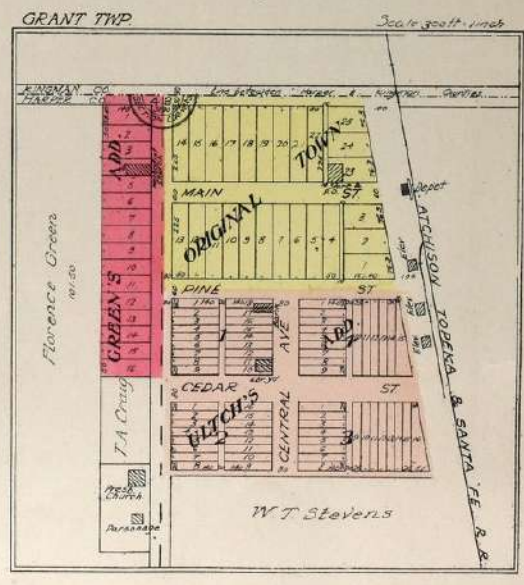




CRYSTAL SPRINGS
LAKE TWP.
Scale 300 feet to 1 inch



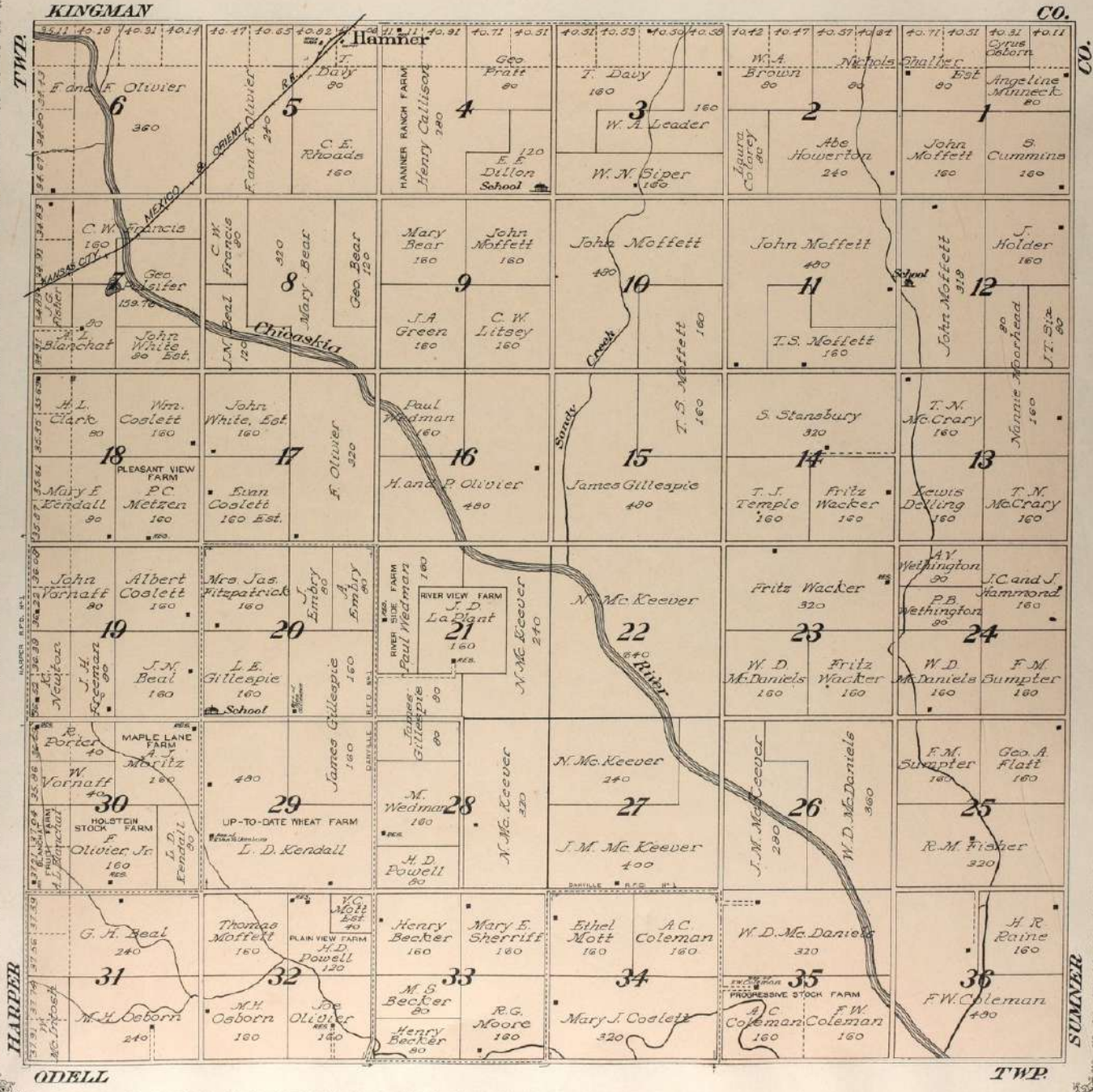
DU QUOIN
GRANT TWP.
Scale 300 feet to 1 inch

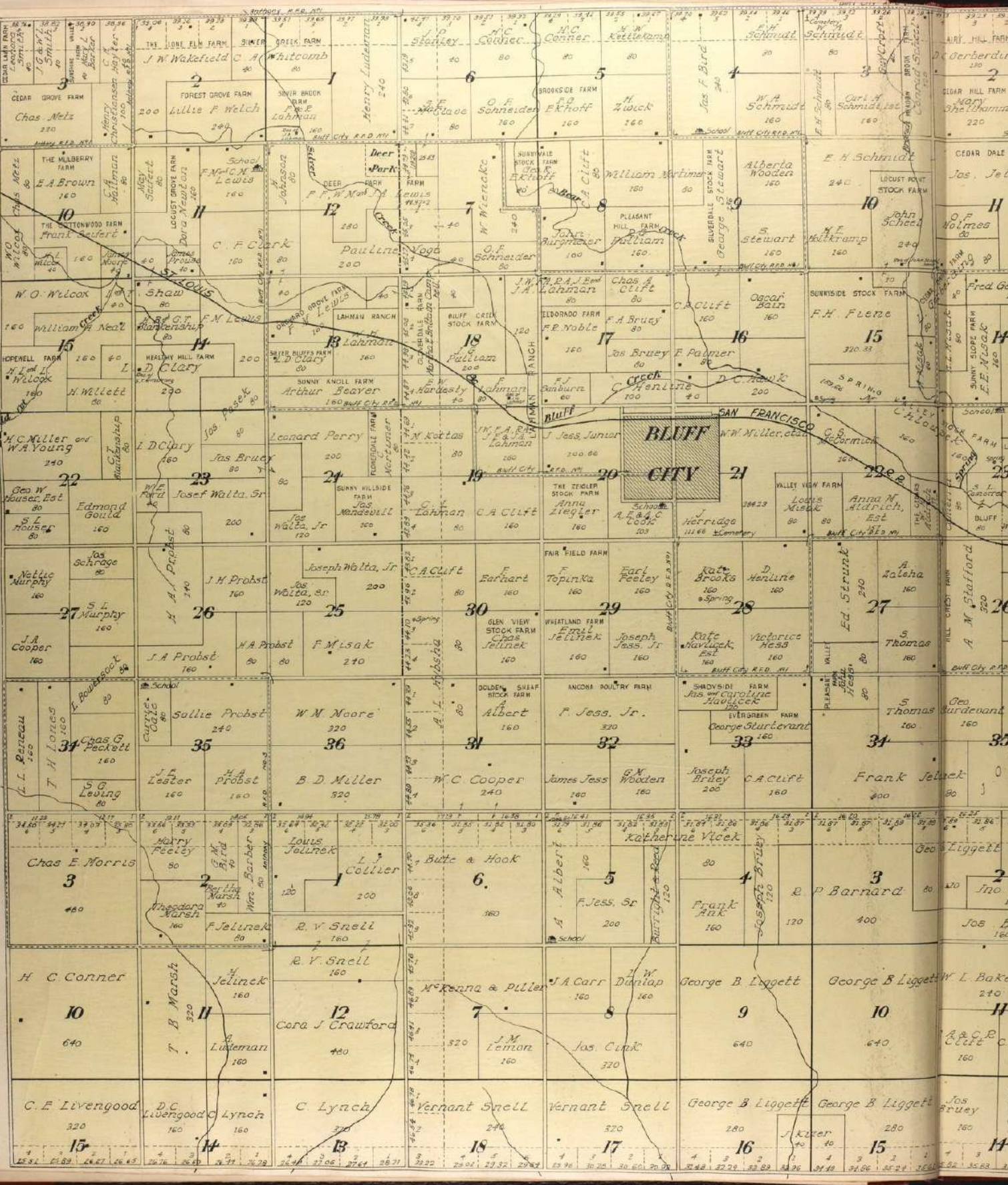


MAP OF
CHICASKIA
TOWNSHIP

Scale 2 inches to 1 mile

Township 31 South, Range 5 West of the 6th P. M.

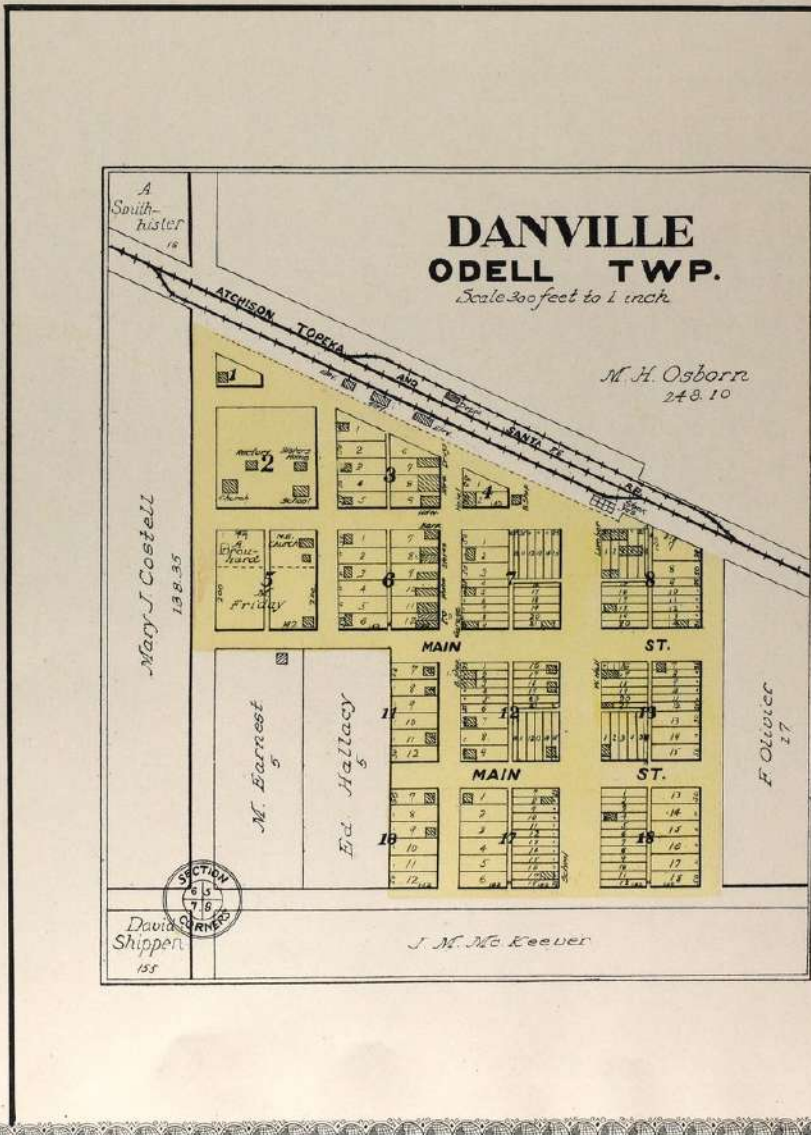
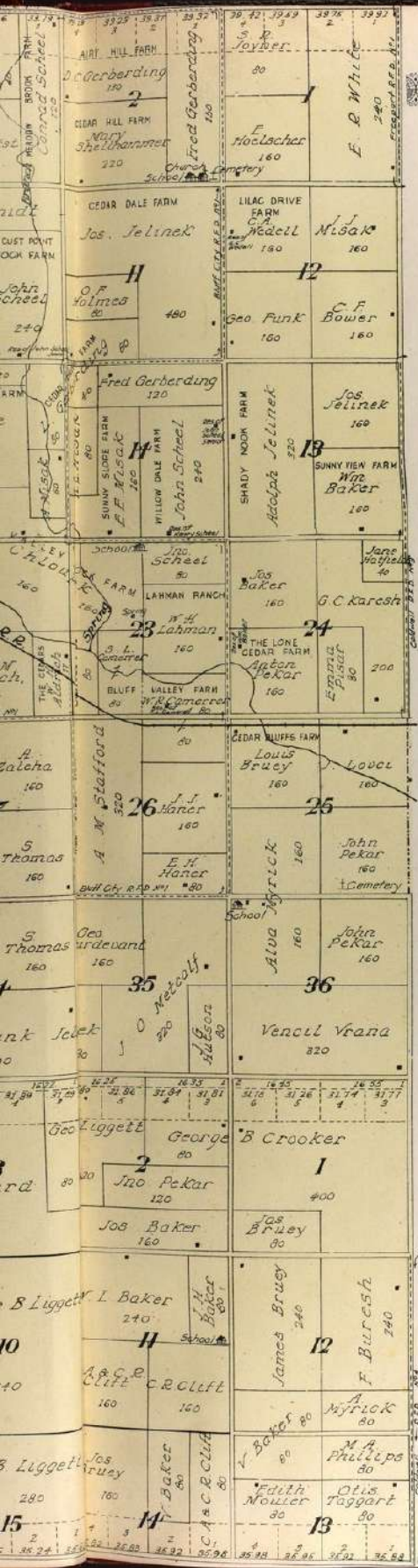




MAP OF
STOHRVILLE
 TOWNSHIP

Scale 2 inches to 1 mile

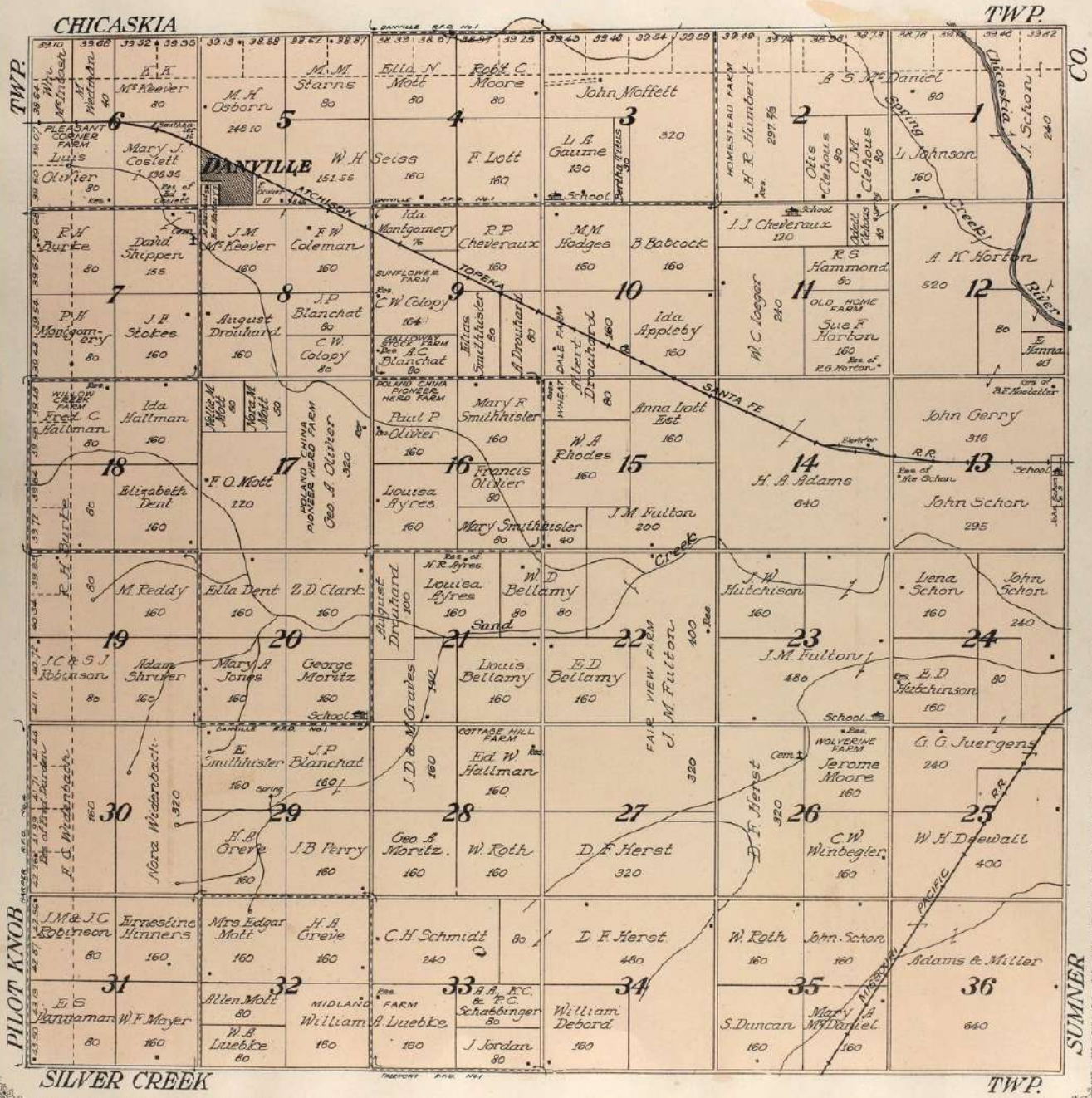
Township 34 South, Range 5 West, Part of Township 34 South, Range 6 West
 Fractional Township 35 South, Range 5 West
 and Part of Fractional Township 35 South, Range 6 West of the 6th P. M.





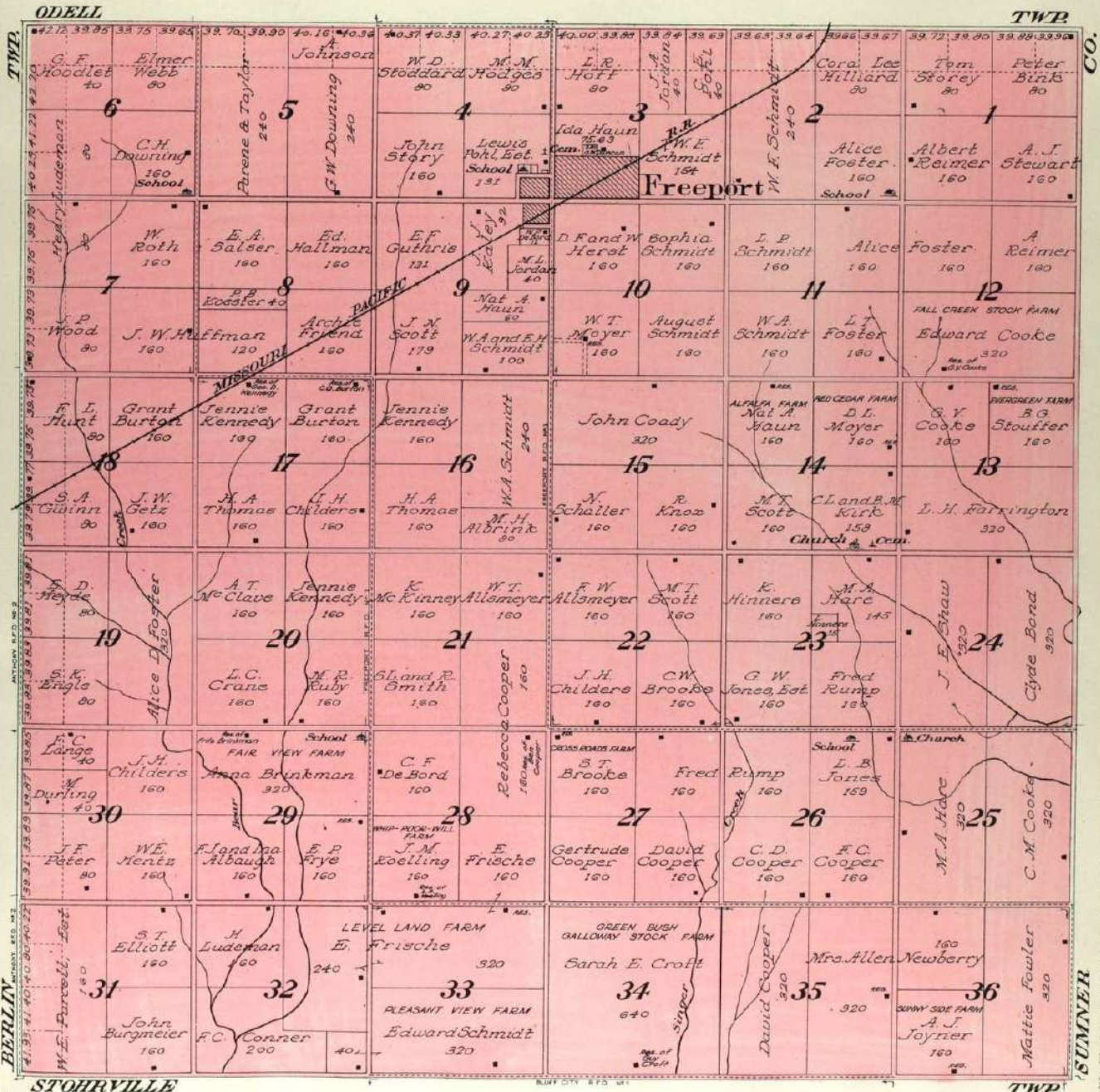
MAP OF
ODELL
 TOWNSHIP
 Scale 2 inches to 1 mile

Township 32 South, Range 5 West of the 6th P. M.



Scale 2 inches to 1 mile

Township 33 South, Range 5 West of the 6th P. M.



STOHRVILLE

SUMNER