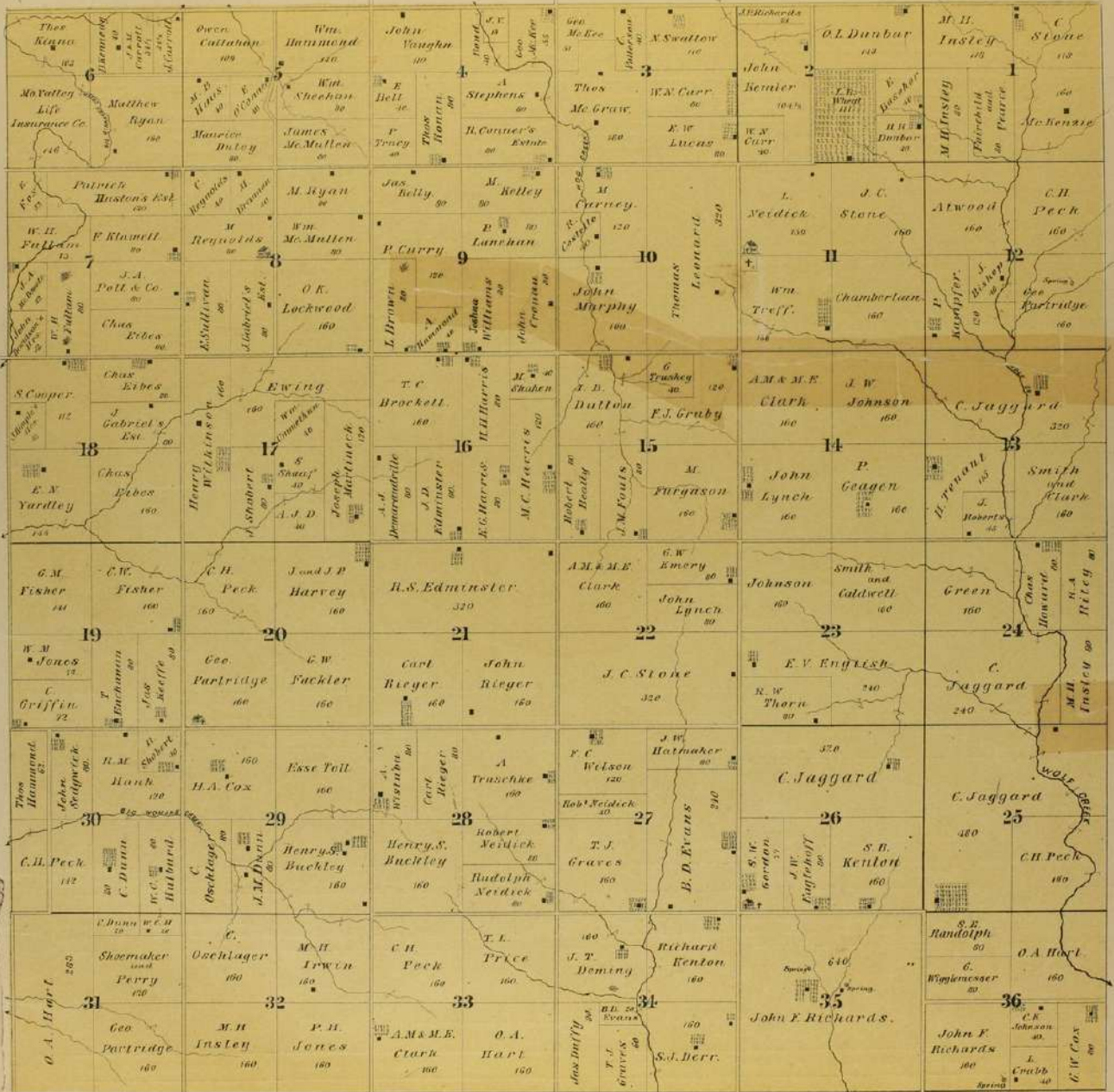


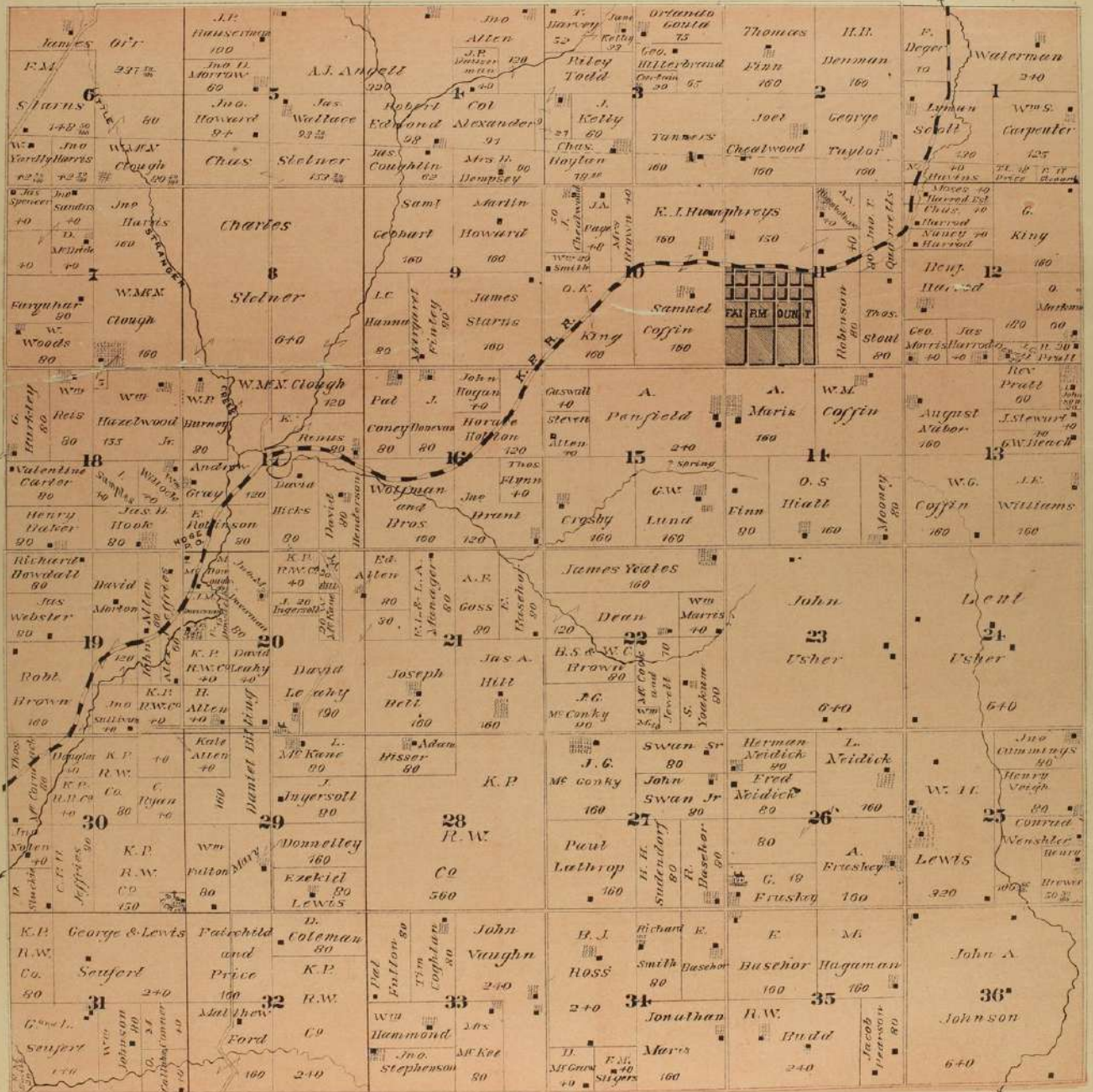
MAP OF TOWNSHIP 11 SOUTH

RANGE 22 E. 6TH P.M.

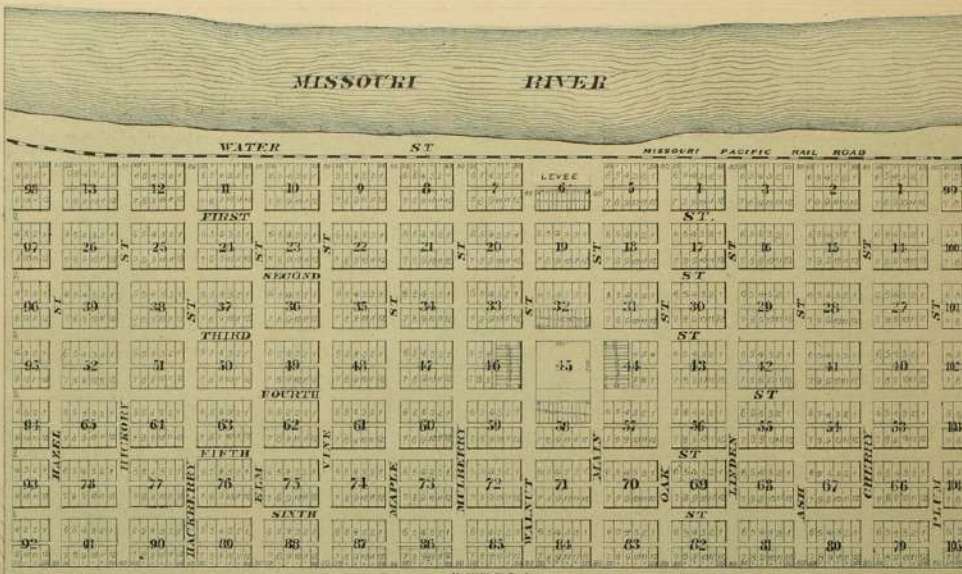


MAP OF TOWNSHIP 10 SOUTH

RANGE 22 E. 6TH P.M.

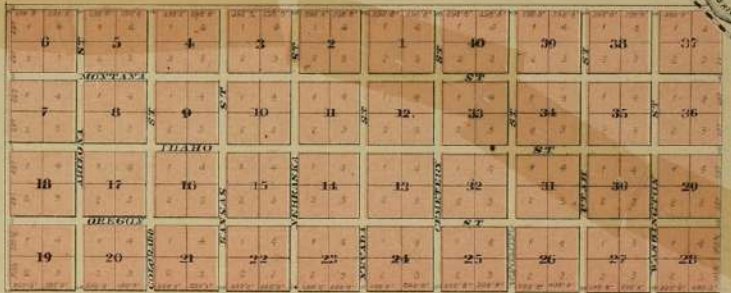


MAP OF
TOWNSHIPS
9 & 10 SOUTH,
RANGE 23 E.
6TH P.M.



DELAWARE CITY.

Scale 600 Feet = 1 inch Situated on Sections 19, 20 and 29 T. 9 S. Range 23 E. 6th P.M.

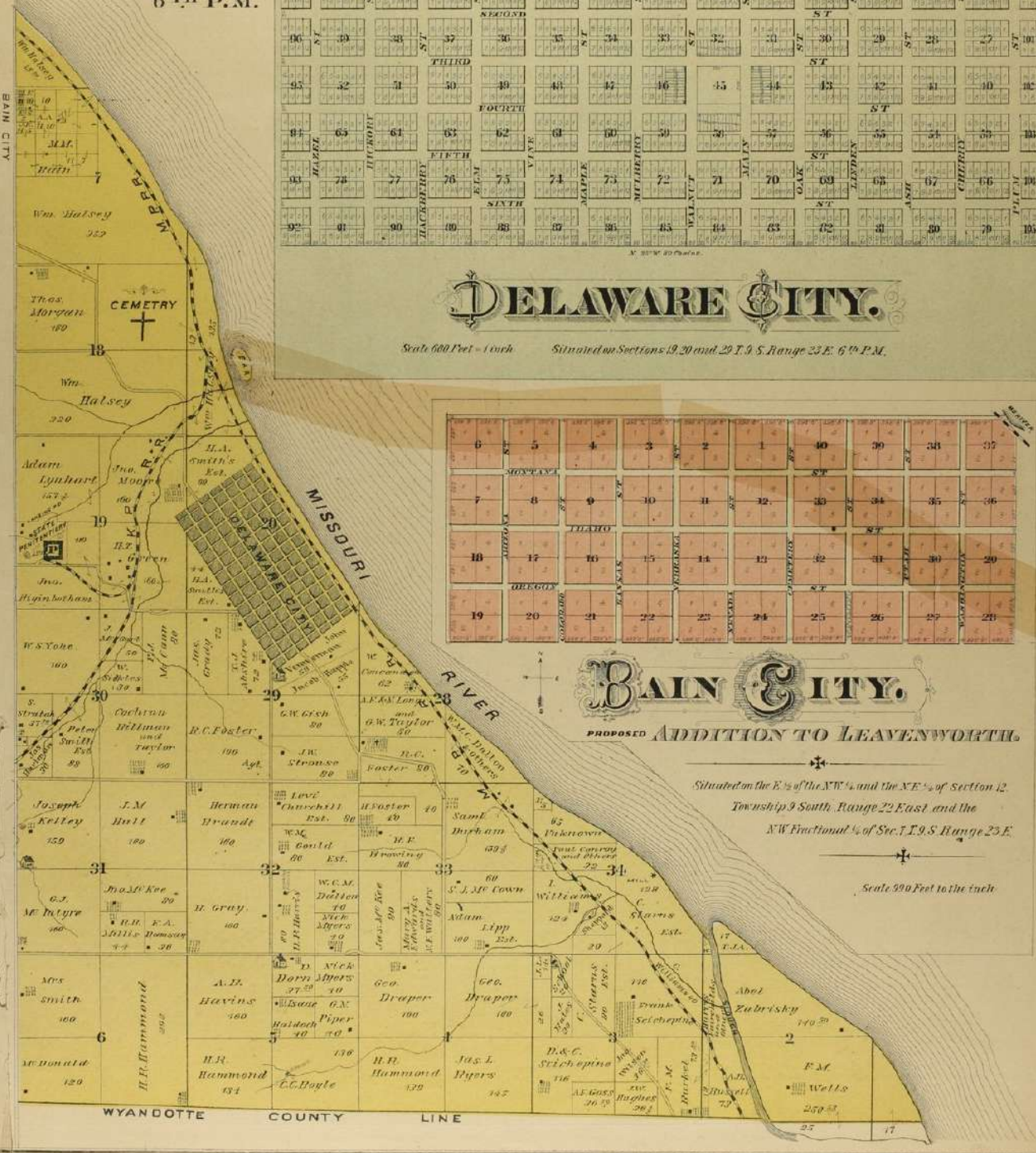


BAIN CITY.

PROPOSED ADDITION TO LEAVENWORTH.

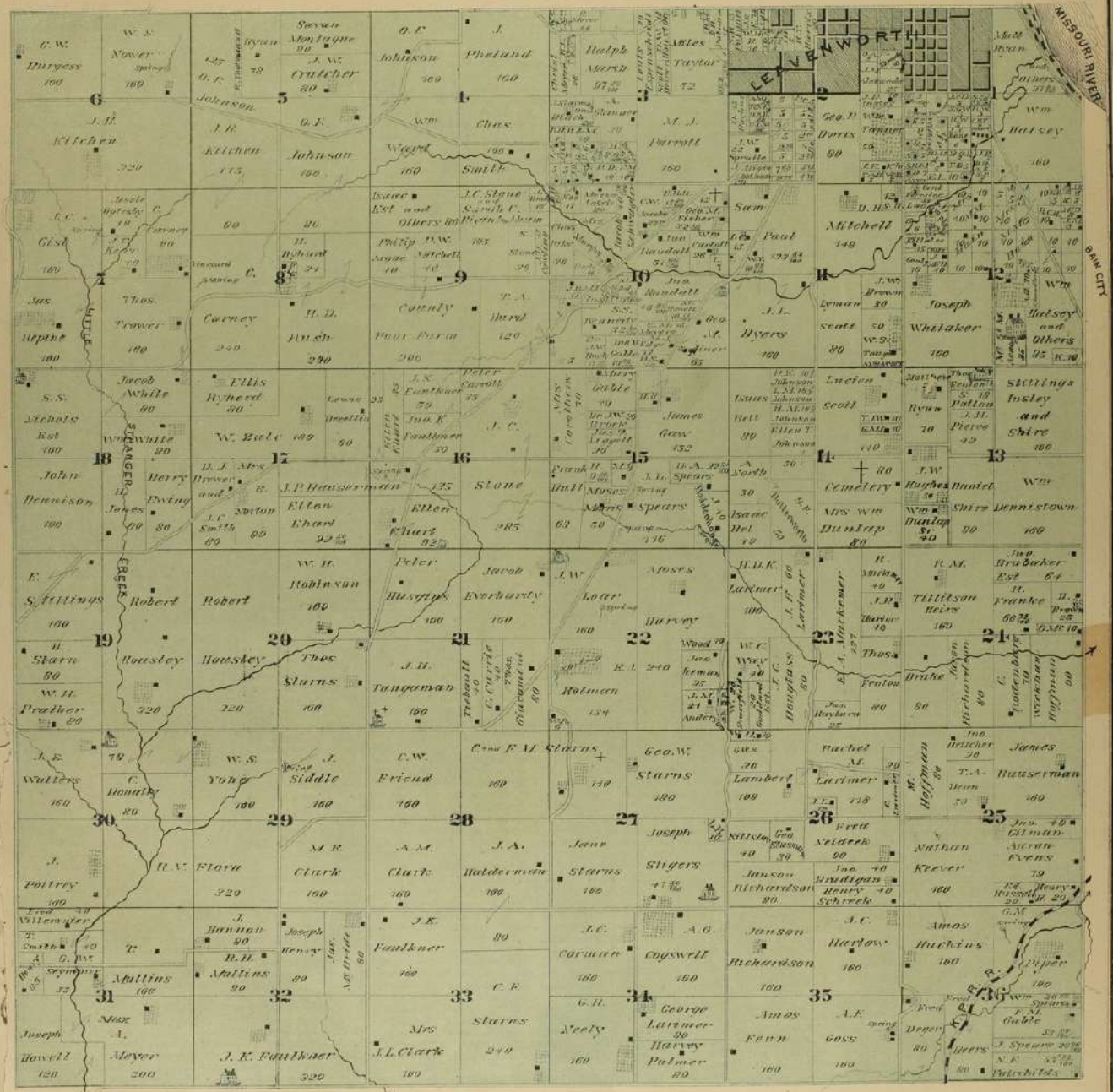
Situated on the E. 1/2 of the N.W. 1/4 and the N.E. 1/4 of Section 12,
Township 9 South, Range 22 East and the
N.W. Fractional 1/4 of Sec. 1 T. 9 S. Range 23 E.

Scale 990 Feet to the inch



MAP OF TOMSWORTH SOUTH

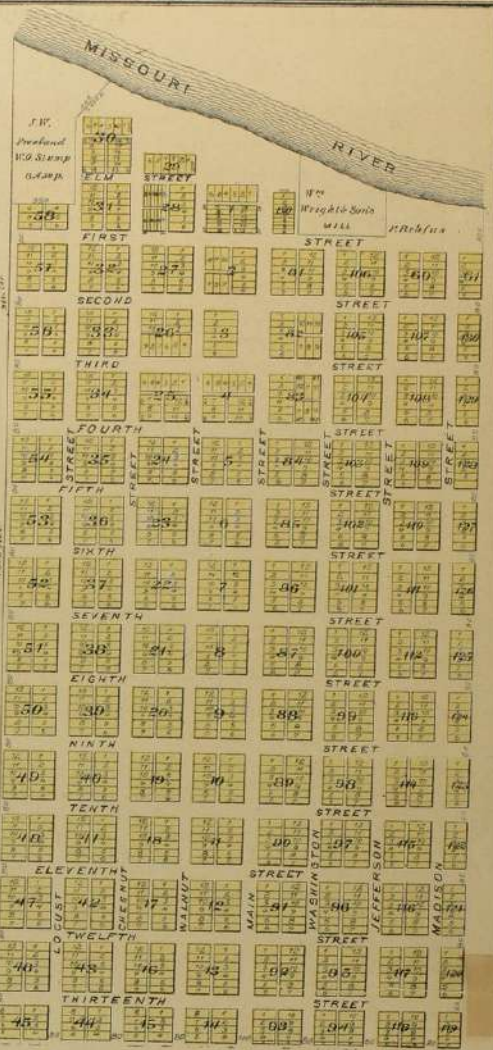
RANGE 22 E. 6TH P.M.





TONGANOXIE

on Section 24 T. 22. E. 6th P.M.
SCALE 500 FEET TO THE INCH

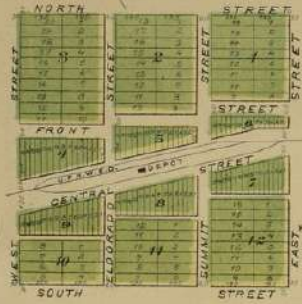


KICKAPOO

Located on Lots 1 & 2 Sec. 28 & N.W. 1/4 of Sec. 33 & S.W. 1/4 of S.W. 1/4 of Sec. 33 T. 22. E. of 6th P.M.

SCALE 600 FEET TO THE INCH

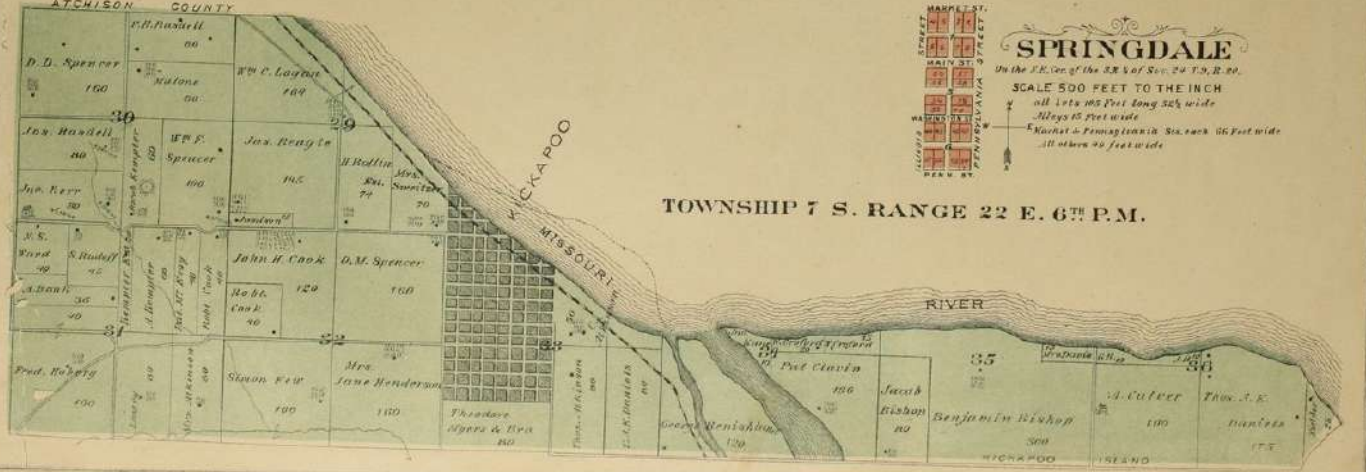
alleys uniformly 16 feet wide
Lots 124 - long & 79 feet wide
Excepting exterior lots and those otherwise marked on the plan.



FALL LEAF

Situated on the S.W. 1/4 of S.W. 1/4 of Sec. 29 T. 12 Range 21.

SCALE 500 FEET TO THE INCH



TOWNSHIP 7 S. RANGE 22 E. 6th P.M.

SPRINGDALE

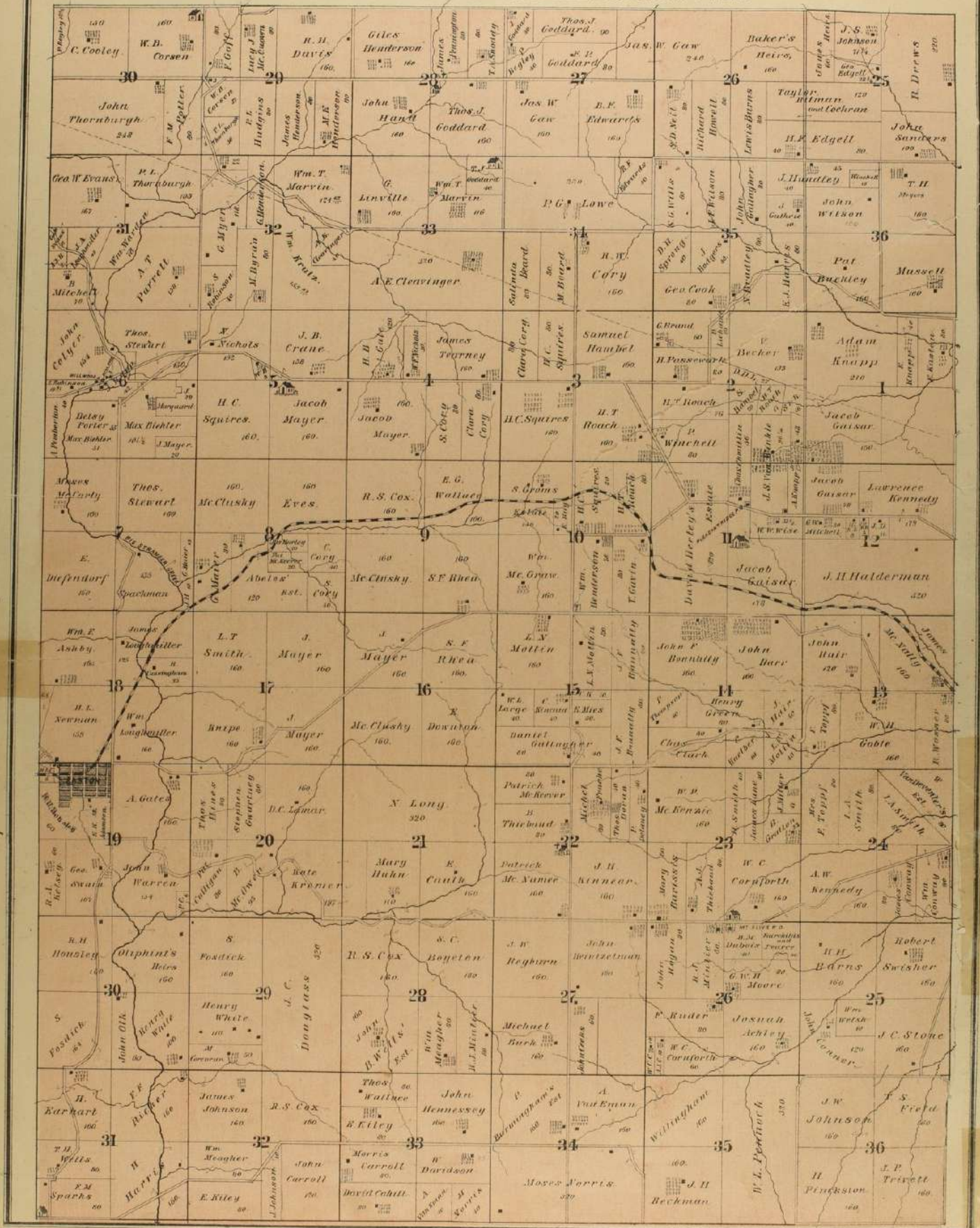
on the S.E. 1/4 of the S.W. 1/4 of Sec. 24 T. 22. E. 6th P.M.

SCALE 500 FEET TO THE INCH

all lots 105 feet long 50 feet wide
Alleys 15 feet wide
Excepting 2 Springdale lots each 1/2 acre wide
all others 20 feet wide

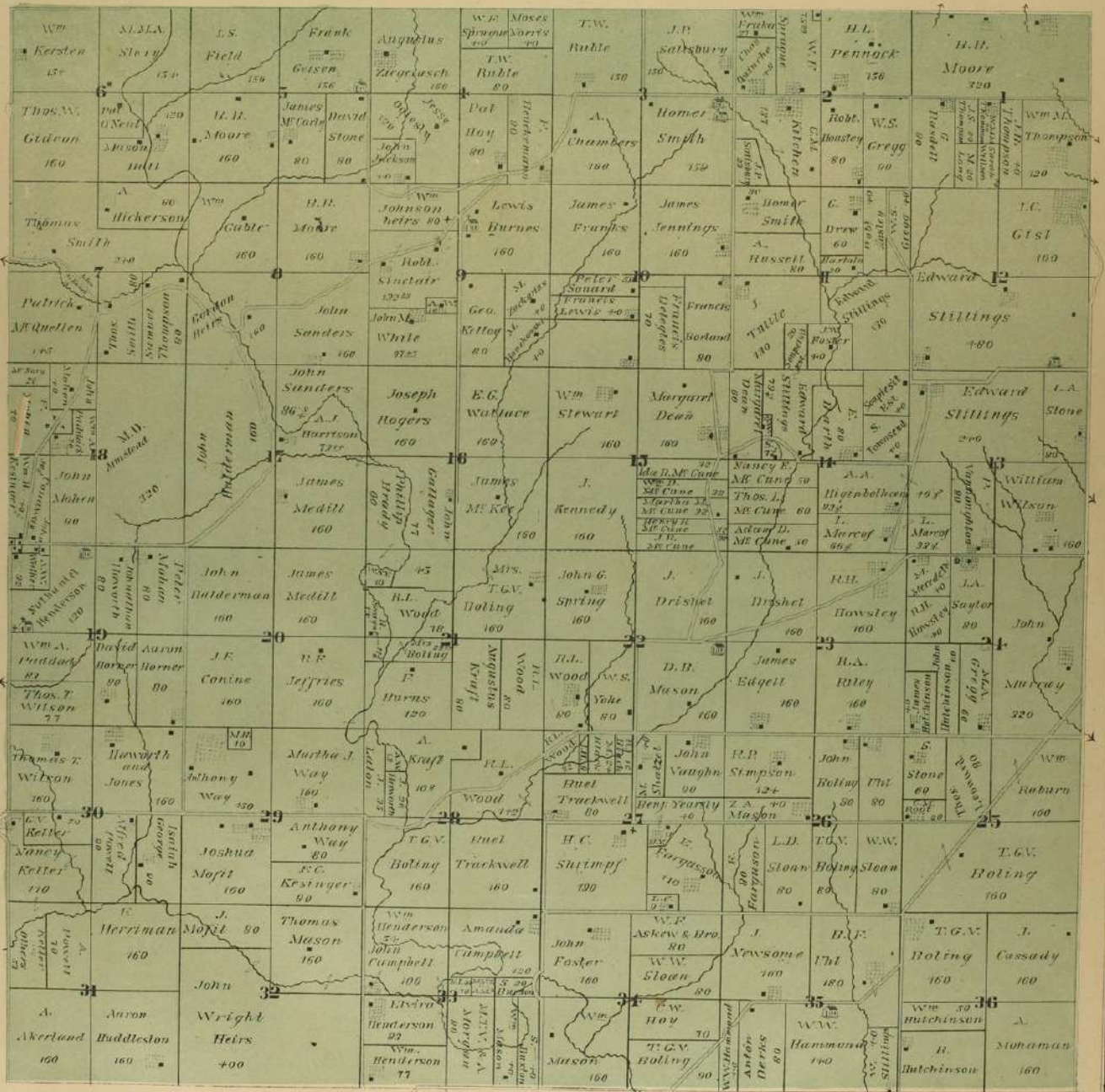


MAP OF TOWNSHIP'S 7th & 8th S. RANGE 21 E. 6th P.M.



MAP OF TOWNSHIP 9 SOUTH

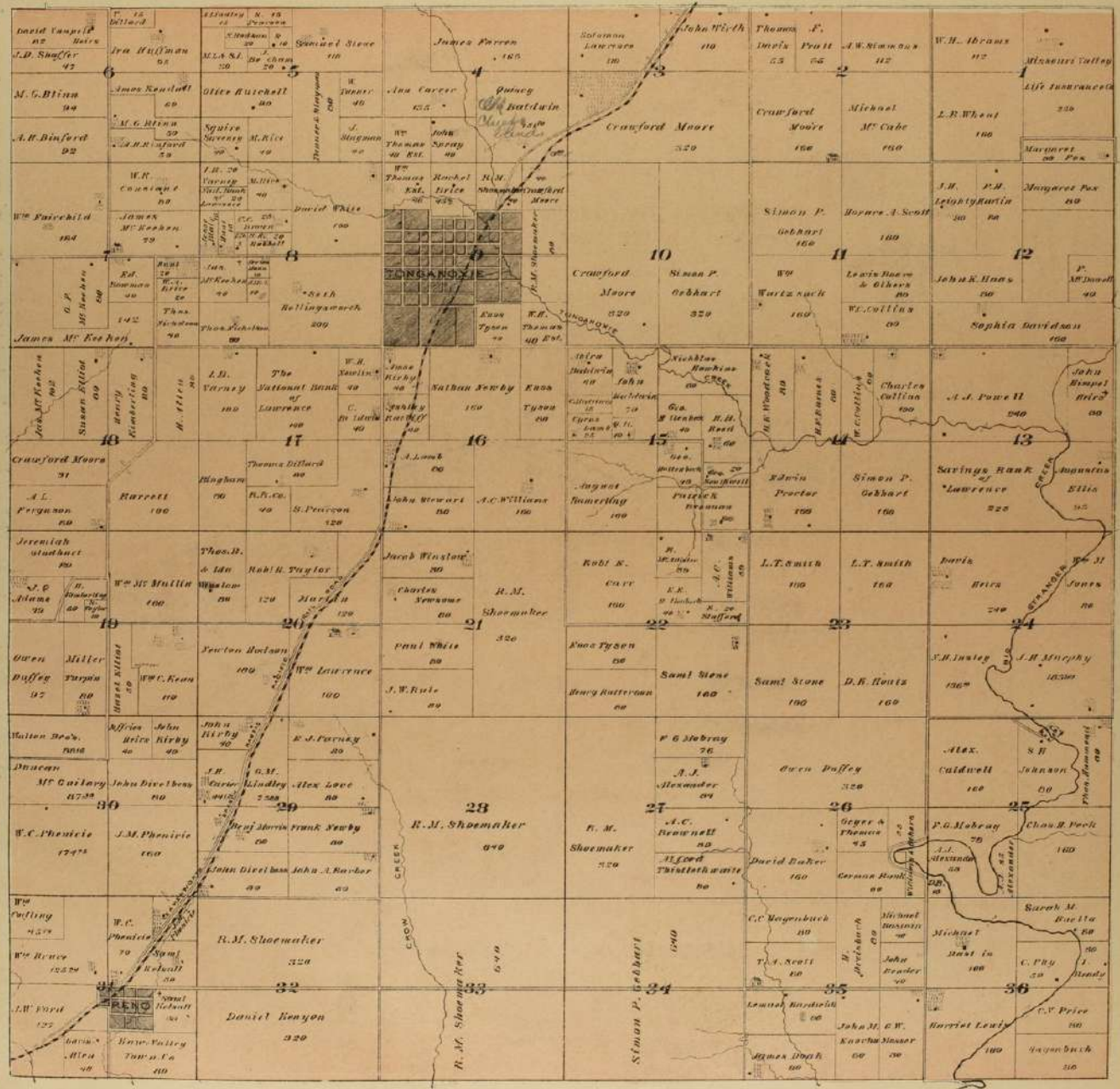
RANGE 21 EAST 6 P.M.



KANSAS STATE HISTORICAL SOCIETY

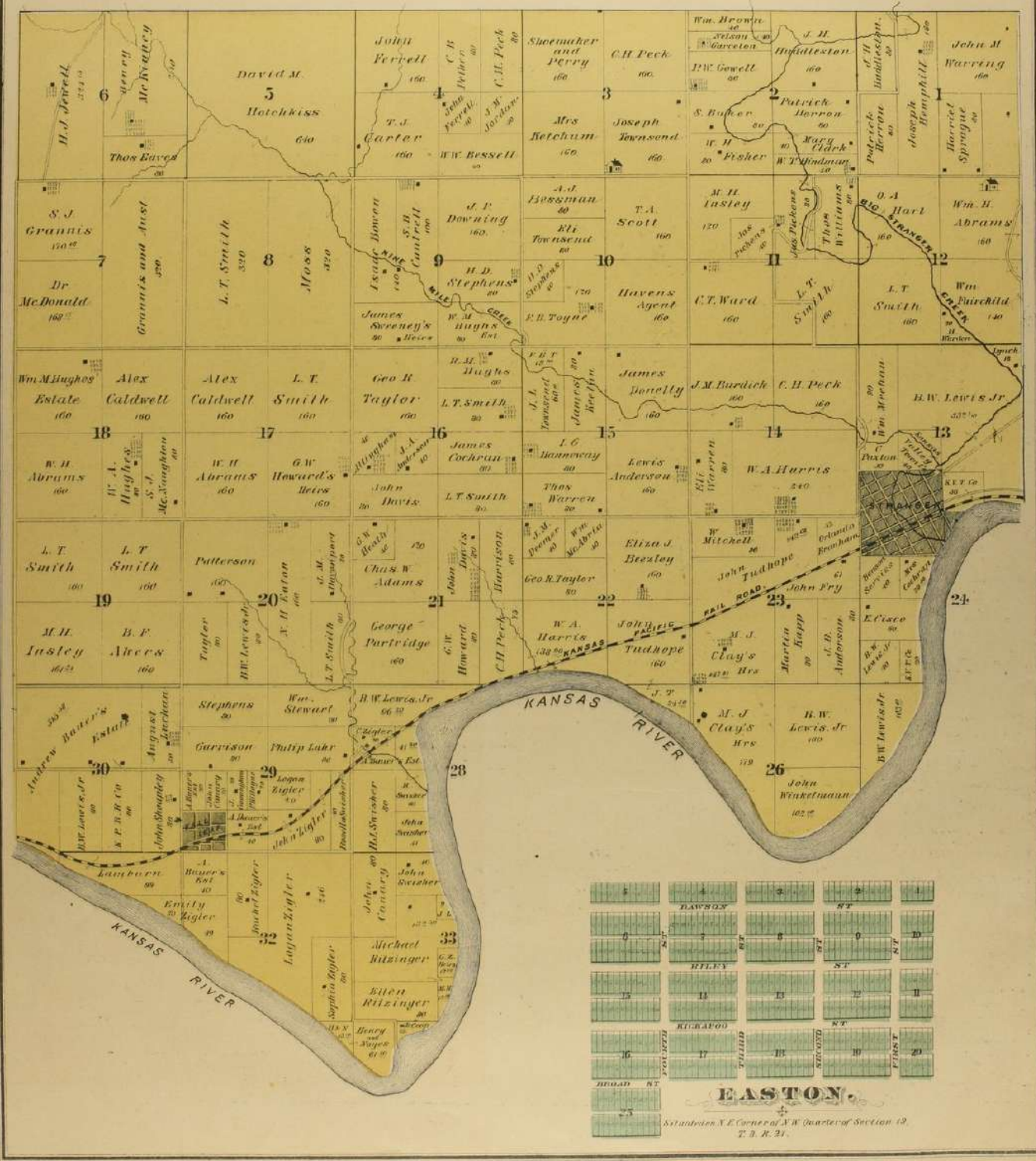
MAP OF TOWNSHIP 11 SOUTH

RANGE 21 E. 6th P.M.



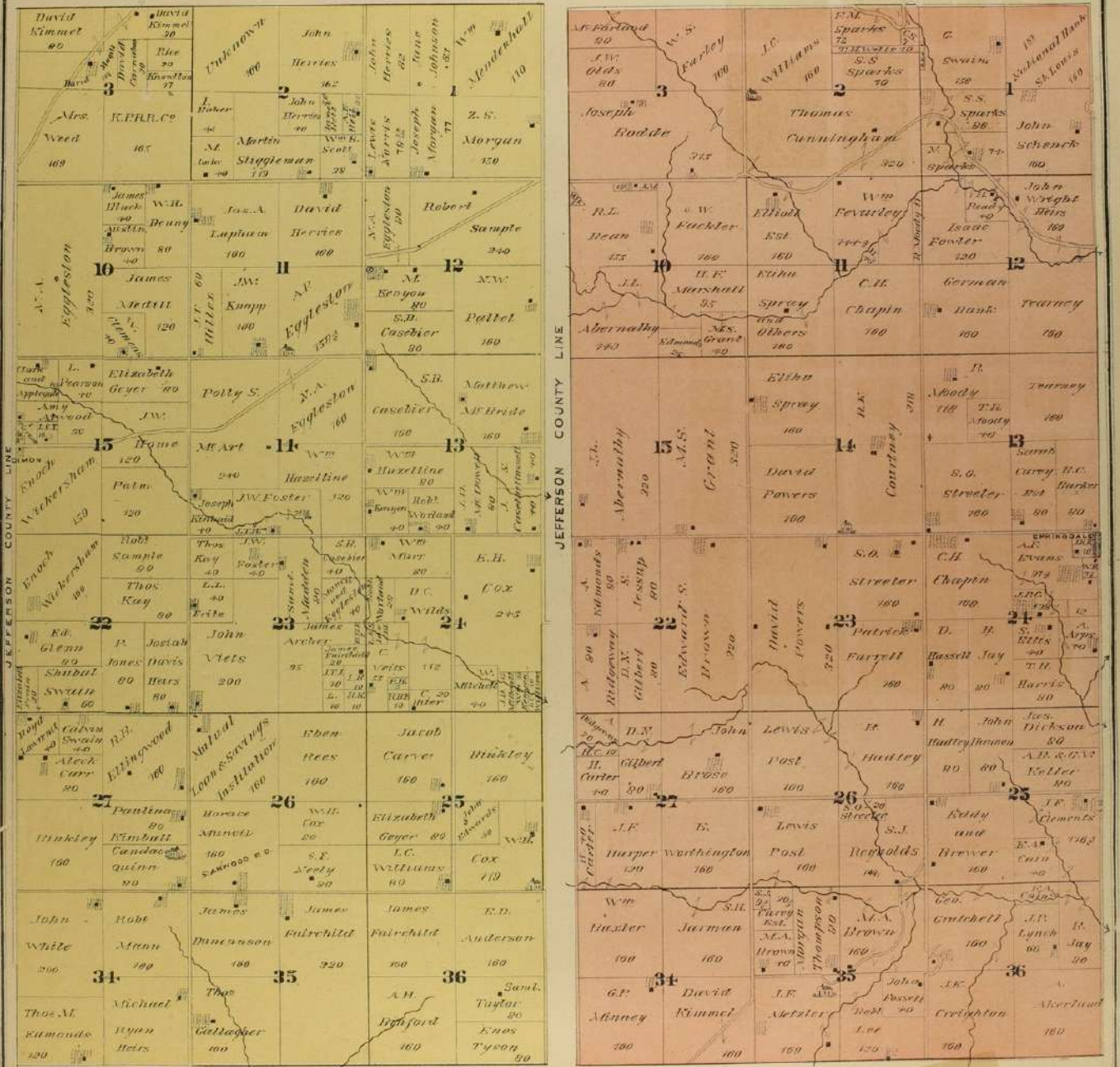
MAP OF TOWNSHIP 19 SOUTH

RANGE 21 E. 6TH P. M.

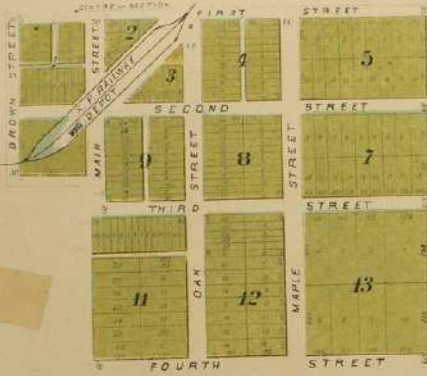


MAP OF TOWNSHIPS 10 & 9 SOUTH

RANGE 20 E. 6TH P.M.

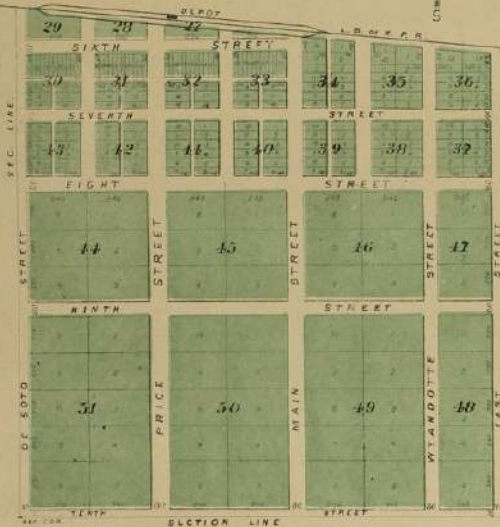


TOWNSHIPS 7 & 8 SOUTH RANGE 20 E. 6 P. M.



RENO

Situated on Sec. 31 T. 11 R. 21 W. E
Scale 400 Feet to the Inch



FAIR MOUNT

Situated on the South End of West 1/2 of Sec. 11
T. 10. R. 22. E. 6. P. M.
Scale 600 Feet to the Inch.



SUMMIT

Situated on the E. W. 1/2 of S. E. 1/4
of Section 34 T. 10. R. 21.
Scale 400 Feet to the Inch.

