

MGC



STORAGE

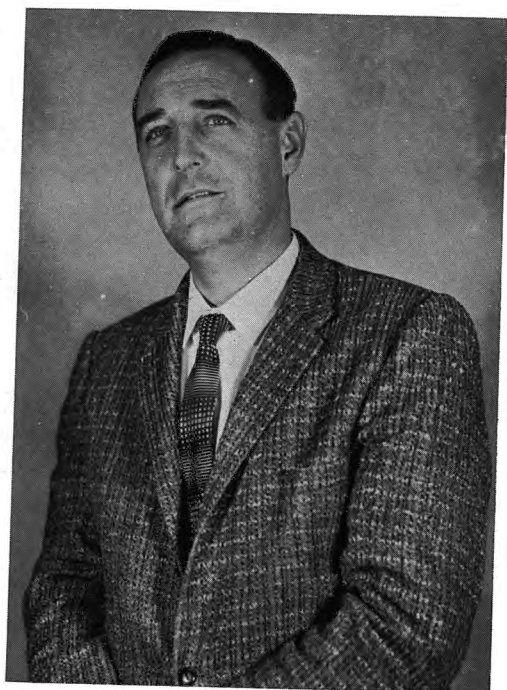
BLUE JAY '60

THE BLUE JAY

Published by

SENIOR CLASS 1960

Sabetha High School
Sabetha, Kansas



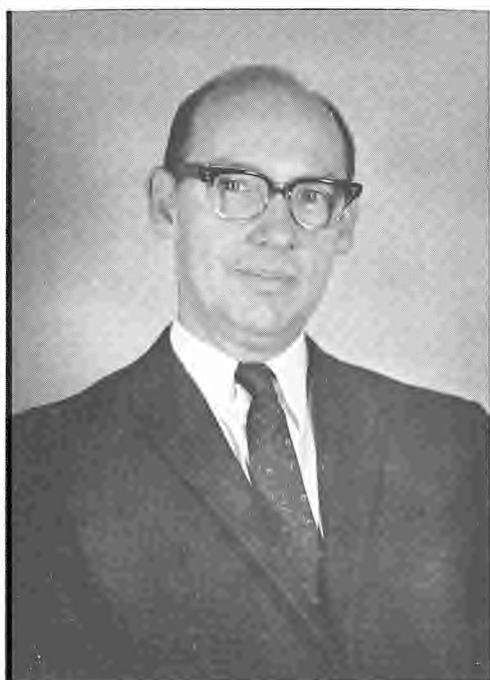
Dedication

This edition of the BLUEJAY is dedicated to Stanley S. Beans, Superintendent of Schools: an able scholar, inspiring teacher, and progressive educator whose fine personality and whose deep devotion to the welfare of his students and the service of the community will always remain with us.

Foreword

The purpose of our BLUEJAY is to record in lasting form all of the activities during the year '59-'60 and to preserve memories of our high school days.

The Senior Class of 1960



MR. ERMAL GARINGER, Principal
A.B., B.S., Marion College
M.A., Ball State Teachers College
Spanish, English III, Seniors,
Student Council



MR. STANLEY BEANS, Superintendent
B.S., M.S., Kansas State University
Psychology, Seniors

Administration



BOARD OF EDUCATION. Left to right: Mrs. Doris Porter, Clerk; Mr. Conrad Johnson, Dr. John Stone, Mr. Ruben Lehmann, Vice-President; Mr. Melvin Wenger, Mr. Luther Clark, President; Mr. Stanley Beans, Mr. Norburt Pierson, Mr. Charles Aeschliman.



MRS. LORTSCHER
Washburn University; Librarian, English.

MR. JOHNSON
Bethany College
Kansas State University
Band, Vocal Music, Geomet

MR. MYERS
Kansas University; Algebra, Chemistry, General Mathematics, Assistant Coach, Football and Track, Juniors, Science Club, S-Club.

MRS. NORRIS
Peru State; Commerce, Jay Jay's, Cheerleaders.

MR. NORRIS
Peru State; Coach, Football and Track, Woodworking, World History, Freshmen.

MR. SCOBY
Kansas State University, Peru State; Science, National Honor Society, Science Club.

MR. SPARKE
Emporia State
Social Sciences, Junior Play, Senior Play.





MR. HANNEY
Kansas State University
Electronics, Photography, Mathematics, Drafting, Physics, Freshmen, Student Council.

MR. HACKLER
Oklahoma State University
Vocational Agriculture, F.F.A., Sophomores.

MISS FRUDY
Oklahoma State University
Home Economics, F.H.A., Kayettes, Juniors.

Faculty

MR. TOWNE
Kansas University
English, Annual, Newspaper, Junior Play, Senior Play.

MR. TROWER
Emporia State
Business, F.B.L.A., Sophomores.

MRS. VANDERVEEN
Baker University
Counselor



Meet the Staff

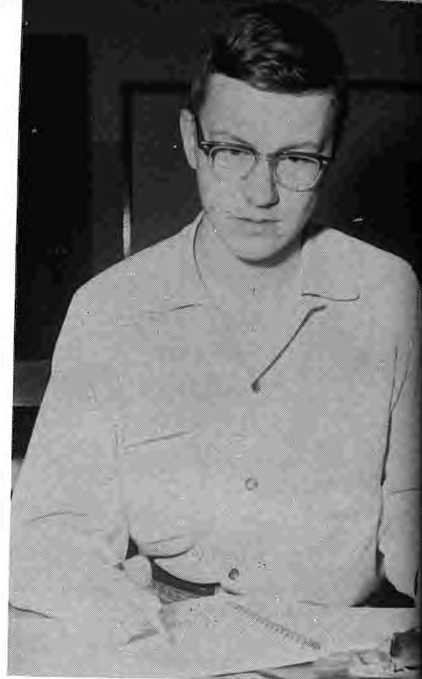
Editor - - - - - STEVE CLARK

Assistant Editor - - - - - LINDA WENGER

Sports Editor - - - - - ROGER ABERLE

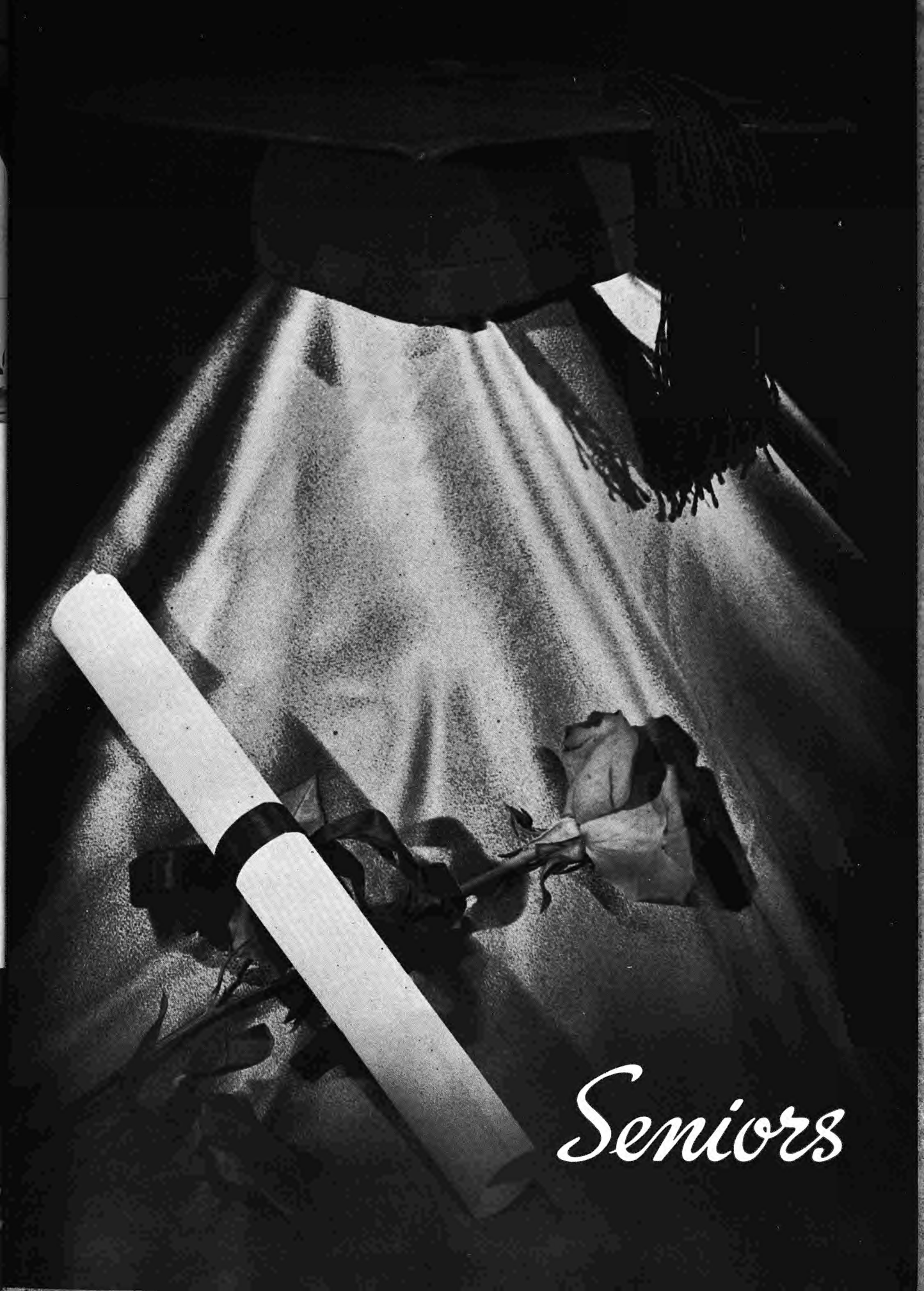
Business Manager - - - - - JIM DEEVER

Junior Representative - - - - GORDON SNYDER



Though there were few on the actual staff, we had the help of the entire Senior class. Many made up pages, others typed, others contributed pictures. Special thanks should be given to Mike Lanning, Jim Jellison, and Lonnie Fletchall for taking and making many photographs.





Seniors



DOUGLAS ABERLE

Transferred from Kiowa, Kansas 3; Basketball 3; Boys' Glee 3, 4; FFA 3, 4; FFA Officer 4; Football 4; Football Letterman 4; Mixed Chorus 3, 4; S-Club 4; Special Chorus 4; Student Council 4; Student Council Officer 4.

JANICE ABERLE

Alpha Club 2; Cheerleader 3, 4; FBLA 4; FHA 4; GAA 1; Girls' Glee 1, 2, 3, 4; Jay-Jays 3, 4; Junior Play; Kayettes 1, 2, 3, 4; Mixed Chorus 1, 2, 3, 4; National Honor Society 4; Special Chorus 3, 4; Vocal Ensemble 1, 2, 3, 4; Class Officer 1; Class President 3; Student Council 3; Christmas Dance Attendant 1.



ROGER ABERLE

Alpha Club 2; Basketball 2; Boys' Glee 2, 3, 4; FFA 1, 2, 3, 4; FFA President 3; Football 2, 3, 4; Football Letterman 3, 4; Junior Play; Kays 1, 2, 3; Mixed Chorus 1, 2, 3, 4; National Honor Society 3, 4; S-Club 3, 4; Senior Play; Special Chorus 3, 4; Track 1, 2, 3, 4; Track Letterman 1, 2, 3, 4; Class President 2; Student Council 2, 3, 4; Student Council President 4.

ELAINE AESCHLIMAN

Band 1, 2, 3, 4; Band President 4; Girls' Glee 2, 3, 4; Jay-Jays 1, 2, 3, 4; Jay-Jay Officer 4; Kayettes 1, 2, 3, 4; Mixed Chorus 1, 2, 3, 4; Homecoming Attendant 4; Christmas Dance Attendant 3; Student Council 4; Class Officer 3.

WAYNE AESCHLIMAN

Boys' Glee 1, 2, 3, 4; FBLA 4; FFA 1, 2, 3, 4; Football 3, 4; Football Letterman 4; Kays 1, 2, 3; Mixed Chorus 2, 3; S-Club 4; Track 3.

RONNIE BEANS

Transferred from Axtell, Kansas 3; Basketball 3, 4; Basketball Letterman 3, 4; Boys' Glee 3, 4; FBLA 3, 4; Football 3, 4; Football Letterman 3, 4; Junior Play; Kays 3; Mixed Chorus 3, 4; S-Club 3, 4; Senior Play; Track 3; Track Letterman 3.



MAURVEEN BEIGHTEL

FHA 1, 2, 3, 4; FHA Officer 4; Girls' Glee 1, 2, 3, 4; Jay-Jays 1, 2, 3, 4; Kayettes 1, 2, 3, 4; Mixed Chorus 1, 2, 3, 4; Special Chorus 2, 3, 4; Vocal Ensemble 2, 3, 4.

BETTY BELL

FHA 1, 2, 3, 4; GAA 1, 2; GAA Cabinet 2; Girls Glee 1, 2, 3, 4; Jay-Jays 2, 3, 4; Junior Play; Kayettes 1, 2, 3, 4; Mixed Chorus 1, 2, 3, 4.



RONNIE BROOKS

Basketball 1, 2, 3, 4; Basketball Letterman 3, 4; Football 1, 2, 3, 4; Football Letterman 2, 3, 4; Kays 1; Mixed Chorus 1; S-Club 1, 2, 3, 4; Track 1, 2, 3, 4; Track Letterman 1, 2, 3, 4.

STEVE CLARK

Alpha Club 2; Kays 1, 2, 3; Science Club 4; Annual Editor 4; Student Council 2.

LOIS CLAYTON

Transferred from Northeast High, Kansas City, Missouri 2; Band 3, 4; Band Officer 4; FHA 3, 4; FHA Officer 4; GAA 2; Girls' Glee 2, 3, 4; Jay-Jays 2, 3, 4; Jay-Jay Officer 4; Kayettes 2, 3, 4; Mixed Chorus 2, 3, 4; National Honor Society 4; One-Act Play 2; Senior Play; Special Chorus 4; Vocal Ensemble 4; Class Officer 4; Combo 2, 3, 4.

JERRY COX

Basketball 2, 3, 4; Basketball Letterman 3, 4; Boys' Glee 3; FBLA 4; FBLA Officer 4; FFA 1, 2, 3, 4; FFA Officer 3; FFA President 4; Football 3, 4; Football Letterman 4; Kays 1, 2, 3; Mixed Chorus 2, 3; S-Club 3, 4; Senior Play; Track 2; Student Council 4; Sweetheart King 4.

**JIM DEAVER**

Band 1, 2, 3, 4; Basketball 4; Basketball Letterman 4; Boys' Glee 1, 2, 3, 4; FBLA 4; FFA 1; Football 1, 2, 3, 4; Football Letterman 4; Kays 1, 2, 3; Mixed Chorus 1, 2, 3, 4; S-Club 4; Special Chorus 1, 3, 4; Track 1, 2, 3; Class Officer 4.

BOB DEAVER

Alpha Club 1, 2; Band 1, 2, 3, 4; Boys' State 3; Football 3, 4; Kays 1, 2, 3; National Honor Society 3, 4; Science Club 4; Science Club President 4; Senior Play; Combo 2, 3, 4; Student Council 4.

**DAVE FLENTIE**

Boys' Glee 4; Boys' State 3; Football 1, 2, 3, 4; Football Letterman 2, 3, 4; FBLA 3; FBLA Officer 3; Kays 1, 2, 3; Mixed Chorus 4; S-Club 2, 3, 4; Senior Play; Track 1, 2, 3, 4; Track Letterman 2, 3, 4; Class Officer 1, 3; Student Council 1.

LONNIE FLETCHALL

Kays 1, 2, 3; Mixed Chorus 1, 2.



FRED FULTON

Boys' Glee 1, 2, 3, 4; FFA 1, 2, 3, 4; Football 1, 2, 3, 4; Football Letterman 1, 2, 3, 4; Kays 1, 2, 3; Mixed Chorus 1, 2, 3; S-Club 1, 2, 3, 4; Senior Play; Special Chorus 1, 2, 3, 4; Track 1, 2, 3, 4; Boys' Quartet; Football Co-Captain 4.

JOHN GARBER

Basketball 1, 2, 3, 4; Basketball Letterman 1, 2, 3, 4; Boys' Glee 1, 4; Boys' State 3; FBLA 4; Football 1, 2, 3, 4; Football Letterman 1, 2, 3, 4; Football Co-Captain 4; Kays 1, 2, 3; Mixed Chorus 1, 3, 4; S-Club 1, 2, 3, 4; Senior Play; Track 1, 2, 3, 4; Track Letterman 1, 2, 3, 4; Student Council 3.

GARLAND GEORGE

Basketball 1, 2, 3; Boys' Glee 1, 2, 3, 4; FBLA 3, 4; Football 1, 2, 3, 4; Football Letterman 2, 3, 4; Kays 1, 2, 3; Mixed Chorus 1, 2, 3, 4; S-Club 2, 3, 4; S-Club President 4; Track 1, 2, 3, 4; Track Letterman 2, 3, 4; Student Council 4.

PAT GREENE

Alpha Club 1, 2; Band 1, 2, 3, 4; GAA 2; Girls' Glee 2, 3, 4; Jay-Jays 1, 2, 3, 4; Jay-Jay Officer 4; Kayettes 1, 2, 3, 4; Kayette Cabinet 3, 4; Mixed Chorus 1, 2, 3, 4; National Honor Society 4; Senior Play; Majorette 4; Homecoming Attendant 4.



KAREN HAMILTON

Kayettes 1, 2, 3, 4; Senior Play.

EVERETT HARTTER

Band 1, 2, 3, 4; Football 2, 3; Kays 1, 2, 3; Mixed Chorus 1; Senior Play.



BYFORD HEINIGER

FFA 1, 2, 3, 4; Kays 1, 2, 3.

EUGENE HERRMANN

Basketball 2; Basketball Trainer; Boys' Glee 1; FFA 1, 2, 3, 4; FFA Officer 3; Football 2, 3; Kays 1, 2, 3; Track 2, 3.

BEVERLY INGLIS

Transferred from Bern, Kansas; Girls' Glee 1; Kayettes 1, 4; Mixed Chorus 1.

JIM JELLISON

Band 1, 2, 3, 4; Boys' Glee 1, 2, 3, 4; FBLA 4; Football 1, 2; Junior Play; Kays 1, 2, 3; Mixed Chorus 1, 2, 3, 4; Special Chorus 4.



JUDY JONES

Band 1, 2, 3, 4; Majorette 1, 2, 3, 4; FHA 1, 2; GAA 1, 2; Girls' Glee 1, 2, 3, 4; Instrumental Ensemble 2, 3, 4; Jay-Jays 1, 2, 3, 4; Kayettes 1, 2, 3, 4; Kayette Officer 4; Mixed Chorus 1, 2, 3, 4; Senior Play; Special Chorus 2, 3, 4; Vocal Ensemble 2; Band Officer 4; Class Officer 3; Christmas Dance Attendant 2; Homecoming Queen 4; All-State Band 3, 4; Combo 3, 4.

MIKE LANNING

Band 1, 2, 3, 4; Boys' Glee 3, 4; FBLA 4; FFA 1, 2, 3; Football 1, 2; Kays 1, 2, 3; Mixed Chorus 3, 4; Senior Play.



BOB LEHMANN

Football 1, 2, 3, 4; Football Letterman 3, 4; Kays 1, 2, 3; Senior Play; Track 1, 2, 3, 4; Track Letterman 3, 4; S-Club 3, 4.

LINDA LOCKER

Band 1, 2, 3, 4; Assistant Director 1, 2, 3, 4; Drum Major 1, 2, 3, 4; Alpha Club 2; FBLA 4; Girls' Glee 1, 2, 3, 4; Jay-Jays 1, 2, 3, 4; Jay-Jay President 4; Junior Play; Kayettes 1, 2, 3, 4; Kayette Cabinet 2, 3, 4; Mixed Chorus 1, 2, 3, 4; Senior Play; Special Chorus 2, 3, 4; Vocal Ensemble 1, 2, 3, 4; Class President 1; Class Officer 2; Combo 2, 3, 4; Student Council 1, 4.



JACKIE LORTSCHER

Band 1, 2, 3, 4; FBLA 4; FBLA Officer 4; FHA 2, 3, 4; FHA Officer 2, 3, 4; Girls' Glee 1, 2, 3, 4; Jay-Jays 1, 2, 3, 4; Junior Play; Kayettes 1, 2, 3, 4; Mixed Chorus 1, 2, 3, 4; National Honor Society 4; Senior Play.

BOB MARTHALER

Boys' Glee 1, 2, 3, 4; FFA 1, 2, 3, 4; Football 1, 2, 3, 4; Football Letterman 3, 4; Kays 1, 2, 3; Mixed Chorus 1, 2, 3, 4; S-Club 3, 4; Track 4.



JAMES METZGER

Band 1, 2, 3, 4; Basketball 1, 2, 3, 4; Basketball Letterman 3, 4; Boys' Glee 1, 2, 3, 4; FBLA 4; Football 2, 3, 4; Football Letterman 4; Junior Play; Kays 1, 2, 3; Mixed Chorus 1, 2, 3, 4; One-Act Play 1; S-Club 3, 4; S-Club Officer 3; Senior Play; Track 1, 2, 3; Assistant Paper Editor 4; Class Officer 2, 3, 4.

WILLA METZGER

Band 1, 2, 3, 4; FBLA 4; Girls' Glee 1, 2, 3, 4; Jay-Jays 1, 2, 3, 4; Jay-Jay Officer 3, 4; Junior Play; Kayettes 1, 2, 3, 4; Kayette Cabinet 3, 4; Mixed Chorus 1, 2, 3, 4; National Honor Society 4; Senior Play; Special Chorus 3, 4; Majorette 2, 3, 4.



KARLA MILLER

FBLA 4; FBLA Officer 4; Girls' Glee 1, 2, 3, 4; Jay-Jays 1, 2, 3, 4; Kayettes 1, 2, 3, 4; Mixed Chorus 1, 2, 3, 4; Senior Play.

RICHARD MOORHEAD

FBLA 4; FFA 1, 2, 3, 4; Football 1; Kays 1, 2, 3, Senior Play.

GARLAND MORRIS

Basketball 1, 3, 4; Basketball Letterman 3, 4; Kays 1, 2; S-Club 2, 3, 4; Track 1, 2, 4; Track Letterman 2.

SARA ROBINSON

Band 1, 2, 3, 4; Cheerleader 3, 4; FBLA 4; Girls' Glee 1, 2, 3, 4; Jay-Jays 1, 2, 3, 4; Junior Play; Kayettes 1, 2, 3, 4; Kayette Cabinet 3, 4; Special Chorus 3, 4; Mixed Chorus 1, 2, 3, 4; Instrumental Ensemble 2.

MARY ROKEY

Alpha Club 2; Band 1, 2, 3, 4; Band Officer 3; Cheerleader 2, 3, 4; Head Cheerleader 4; Girls' Glee 1, 2, 3, 4; Girls' State 3; Jay-Jays 1, 2, 3, 4; Jay-Jay Officer 3; Junior Play; Kayettes 1, 2, 3, 4; Kayette Cabinet 2, 3; Kayette President 4; Mixed Chorus 1, 2, 3, 4; National Honor Society 3, 4; One-Act Play 1; Senior Play; Special Chorus 2, 3, 4; Vocal Ensemble 2, 4; Combo 2, 3, 4; Student Council 4; Class Officer 1; Homecoming Attendant 3; Christmas Dance Attendant 1, 2; Hiawatha Halloween Queen 4.

CANDY ROONEY

Band 1, 2, 4; FHA 4; Girls' Glee 1, 2, 4; Instrumental Ensemble 1, 2, 4; Jay-Jays 1, 2, 4; Kayettes 1, 2, 4; Kayette Cabinet 4; Mixed Chorus 1, 2, 4; National Honor Society 4; National Honor Society Officer 4; Senior Play; Special Chorus 2, 4; Vocal Ensemble 1, 2, 4; Christmas Dance Attendant 4.



TED RUSE

Band 1, 2, 3, 4; Boys' Glee 1, 2, 3, 4; FBLA 4; Kays 1, 2, 3; Mixed Chorus 2, 3, 4; S-Club 3, 4; Senior Play; Special Chorus 2, 3, 4; Track 3, 4; Track Letterman 3, 4; Instrumental Ensemble 1, 2, 3, 4; Class President 4; Student Council 4; Student Council Officer 4; Combo 2, 3, 4; All-State Band 3, 4.

DAVE STALDER

Basketball 1, 2, 3, 4; Basketball Letterman 2, 3, 4; Boys' Glee 1, 2; FBLA 3; Football 1, 2, 3, 4; Football Letterman 2, 3, 4; Kays 1, 2, 3; Mixed Chorus 1, 2; S-Club 2, 3, 4; Senior Play; Track 1.

JANICE STOLDT

FHA 1, 2, 3, 4; GAA 1, 2; Girls' Glee 1, 2, 3, 4; Jay-Jays 1, 2, 3, 4; Kayettes 1, 2, 3, 4; Mixed Chorus 1, 2, 3, 4; Senior Play.

JEANETTE STOLDT

FHA 1, 2, 3, 4; GAA 1, 2; Girls' Glee 1, 2, 3, 4; Jay-Jays 1, 2, 3, 4; Kayettes 1, 2, 3, 4; Mixed Chorus 1, 2, 3, 4; Senior Play.



SANDRA STAUFFER

FHA 1; GAA 1, 2; GAA Cabinet 2; Girls' Glee 1, 2, 3, 4; Jay-Jays 1, 2, 3, 4; Kayettes 1, 2, 3, 4; Mixed Chorus 1, 2, 3, 4; National Honor Society 3, 4.

PHYLLIS THIEMANN

Band 1, 2, 3, 4; FBLA 4; FBLA President 4; FHA 1, 2, 3; FHA Officer 3; Girls' Glee 3, 4; Jay-Jays 4; Kayettes 1, 2, 3, 4; Kayette Cabinet 4; Mixed Chorus 1, 2, 3, 4; Sweetheart Dance Attendant 3; Christmas Dance Attendant 3; Christmas Dance Queen 4.



RITA TIBBETTS

Band 1, 2, 3, 4; FHA 1, 2, 3, 4; Girls' Glee 2, 3, 4; Jay-Jays 2, 3, 4; Kayettes 1, 2, 3, 4; Mixed Chorus 1, 2, 3, 4.

BILLIE WALZ

FHA 1, 3; GAA 1, 2; Girls' Glee 1, 2, 3, 4; Jay-Jays 1, 2, 4; Jay-Jay Officer 4; Kayettes 1, 2, 3, 4; Mixed Chorus 1, 2, 3, 4; Senior Play.



CHARLES WELLS

Alpha Club 2; FBLA 3; Football 3; Junior Play; Kays 1, 2, 3; One-Act Play 2; Senior Play; Paper Editor; Class Officer 3.

LINDA WENGER

Band 1, 2, 3, 4; Band Officer 3; Cheerleader 3, 4; Assistant Annual Editor 4; FBLA 4; Girls' Glee 1, 2, 3, 4; Instrumental Ensemble 1, 2, 3, 4; Jay-Jays 1, 2, 3, 4; Kayettes 1, 2, 3, 4; Kayette Cabinet 3, 4; Mixed Chorus 1, 2, 3, 4; Senior Play; Special Chorus 2, 3, 4; Combo 2, 3, 4.



GRACE WIST

Transferred from Honey Creek, Nebraska; Kayettes 4.

CLASS OFFICERS

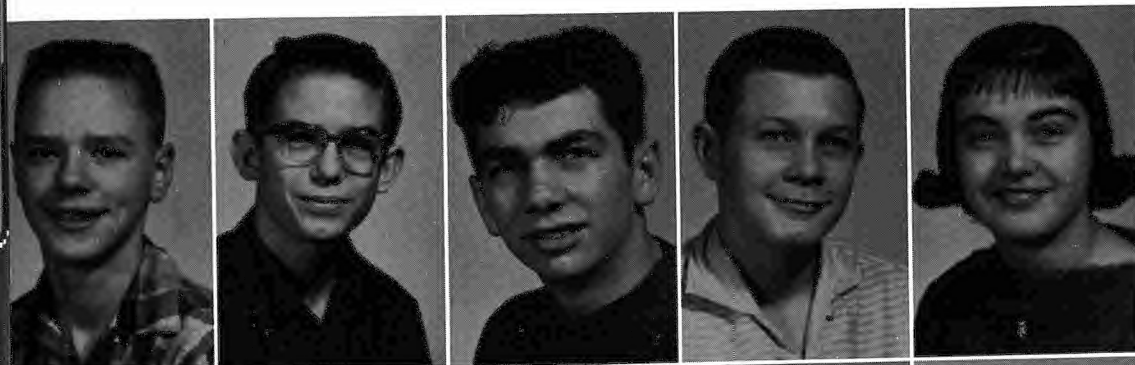
President - - - - - TED RUSE
 Vice-President - - - - - JAMES METZGER
 Secretary - - - - - LOIS CLAYTON
 Treasurer - - - - - JIM DEAVER
 Student Council - - - - - DOUG ABERLE





Classes

Freshmen



Steve Aberle
Bob Ayers
Reldon Boltinghouse
Harold Brown
Linda Cupp



Linda Davis
Paul Dienstbier
Albert Eaton
Jim Estle
Jerry Ewing



Jerry Gates
Nancy Grote
Garry Hartter
Kathy Henninger
Susan Hudson



Tom Humphrey
Dorothy Hunnicutt
Bob Inglis
Bob Jack
Betty Jones



Arlen Kaul
Carol Kehr
Katy Kelly
Charles Kiester
Janet Lortscher



CLASS OFFICERS

MIKE MONTGOMERY - - - - - President
 MARCIA ROSS - - - - - Vice-President
 JANET WELLS - - - - - Secretary-Treasurer
 STEVE WENGER - - - Student Council Representative

Mary McKenney
 Mike Montgomery
 Linda Moore



Cherlyn Randolph
 Dianne Roberts
 Garry Rokey
 Marcia Ross
 Dennis Stalder



Arnold Streit
 John Studer
 Jim Summers
 Nikki VonBergen
 Janet Wells



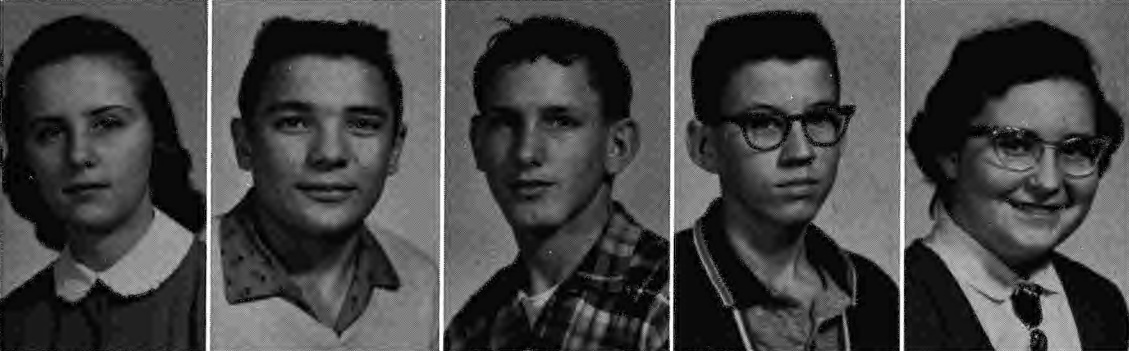
Pat Wenger
 Steve Wenger
 Edward Wist
 Peggy Wittmer
 JoAnn Wittwer



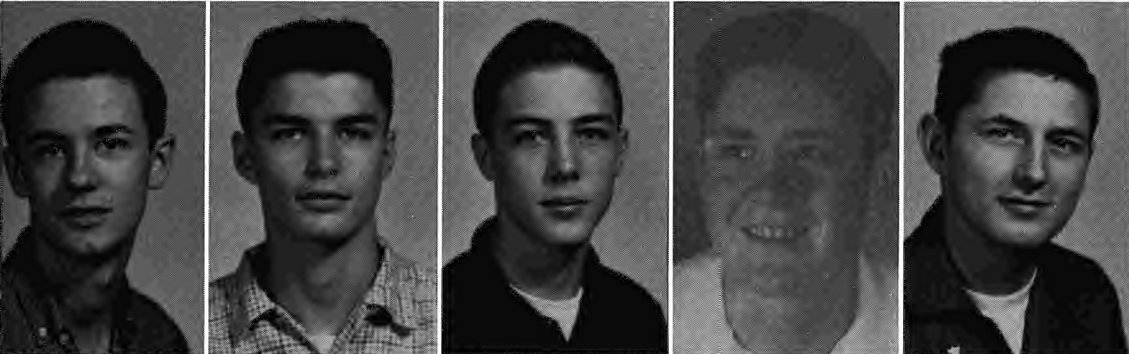
Sophomores



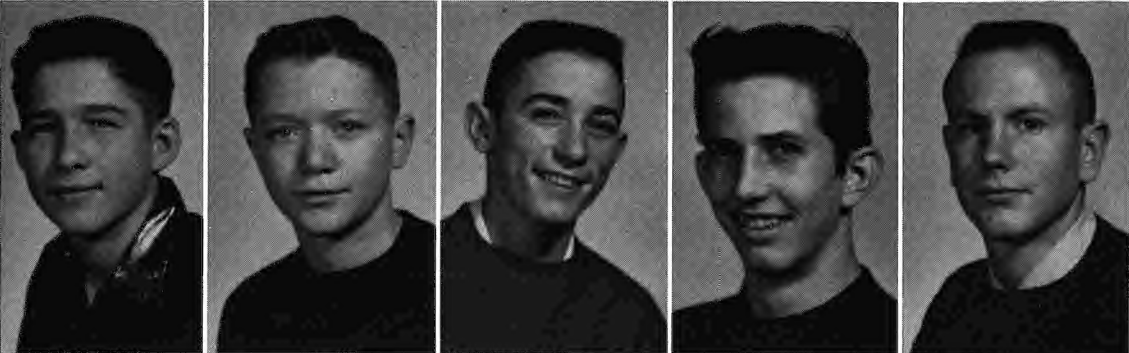
Fred Aberle
Judy Aberle
Miriam Aberle
Roger Aeschliman
Eula Alderfer



Betty Bartram
Galen Bauman
Delmer Beightel
Joe Brezina
Vicki Brown



Lanny Carpenter
Charles Davis
David Duey
Bert Flack
Don Fletchall



Jan Garber
Elgin Hartter
Roger Hartter
Franklin Johnston
Bill Jones



Eddie Kiester
Mary Kistner
Bonnie Larabee
Kent Marment
Carol Metzger

President - - - - - DAVID DUEY
 Vice-President - - - - - FRED ABERLE
 Secretary-Treasurer - - - - - JUDY OGDEN
 Student Council Rep. - - - - - JUDY ABERLE
 Program Chairman - - - ROGER AESCHLIMAN
 Program Chairman - - - - SHARYN NESBIT



Marge Metzger
 Sherrill Minneman
 Forest Myers
 Sharyn Nesbit
 Paul Nickleson



Judy Ogden
 Earlene Parli
 Jerry Rison
 Melvin Robinson
 Linda Rokey



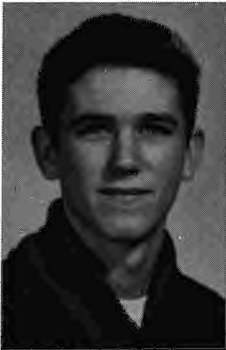
Elaine Scoby
 John Showalter
 Artie Smith
 Earnest Snook
 Robert Steiner



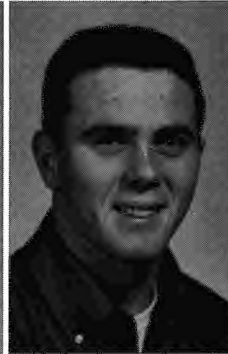
Janette Strahm
 Jerry Troxell
 Mary Watkins
 Shirley Wenger
 Ethel Zubler



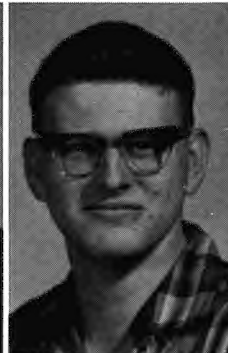
Juniors



WILMA ACKERMAN
RICHARD AYERS
CHARLES BASKETT
DALE BAUMAN
CALVIN BEER



HELEN BERGE
PHILIP BESTWICK
LARRY BOLTINGHOUSE
GALEN BRAMMER
STEVE BRAMMER



STEVE BROYLES
MONTE CARPENTER
NORMA CLAYTON
PHILIP CLOSE
ALVIN ELLIOTT



ELDON FORD
CAROL GEIGER
DIANE GRIMM
LARRY GRIMM
LARRY HATZ



STEPHEN HERRMANN
JOAN HUMPHREY
DARLENE HYLTON
AGNES JONES
EMMA JONES



CLASS OFFICERS

MONTE CARPENTER - - - - - President
 ELAINE MEYER - - - - - Vice-President
 CHARLES BASKETT - - - - Secretary-Treasurer
 PAT REID - - - - - Program Chairman
 DANNY MISHLER - - - - Student Council Rep.

JAMES JONES
 DELBERT KEHR
 FERN KELLY



ELLEN LAWSON
 MARLENE LOCHER
 PAMELA MATHES
 DELWIN MEYER
 ELAINE MEYER



GARY MILLER
 DANNY MISHLER
 BARRY MOLINEUX
 ANDY MOORHEAD
 JOE OTT



LONNIE PHILLIPS
 PAT REID
 BUD SCHUETTE
 RICHARD SCOBY
 SANDRA SMITH



GORDON SNYDER
 D'ANN STRAHM
 KAREN STRAHM
 SUE WERTENBERGER
 DELORES WITTMER



Student Council

The job the Student Council has to perform is wide in scope.

The sponsors, Mr. Hanney and Mr. Garinger, always ready and willing to help, combined with the able leadership of president Roger Aberle, gave the council one of its most successful years in school history.

A few of the many varied activities they sponsored were the Christmas dance, concession stand for home games, dance band tours, lyceums and assemblies, and the building of a concession stand for football games.

The council, numbering seventeen, is composed of organizational presidents and a representative of each class.



Congratulations, Phyllis!



President, ROGER ABERLE
Secretary, JUDY ABERLE

Vice-President, DOUGLAS ABERLE
Treasurer, TED RUSE



The Christmas Dance was held December 23 in the gym. The theme was "Snowflake Frolic." Phyllis Thiemann was crowned Miss Snowflake at intermission by Roger Aberle. Horton provided us with their dance band to furnish the music.



Athletics



CHAMPIONS OF THE BIG FIVE

FIRST ROW: Jim Metzger, David Stalder, Roger Aberle, Fred Fulton, Jim Deaver, Garland George, Robert Lehman, Doug Aberle, John Garber, Dave Flentie, Ronnie Beans, Ronald Brooks, Robert Marthaler.

SECOND ROW: Bud Schuette, Lonnie Phillips, Eldon Ford, Richard Scoby, Larry Grimm, Fern Kelly, Joe Ott, Steve Herrmann, Danny Mishler, Larry Boltinghouse, Jerry Cox, Wayne Aeschliman, Bob Deaver.

THIRD ROW: Galen Bauman, Roger Aeschliman, Bill Jones, James Estle, Jerry Gates, Charles Kiester, Dennis Stalder, Steve Wenger, Reldon Boltinghouse, Arlen Kaul, Bob Jack, Mike Montgomery, Pete Summers, Albert Eaton.

The 1959 Bluejay Football team displayed the necessary qualities of sportsmanship, desire, cooperation, and extra effort so vital for a championship team. Team effort in every game was responsible for the victory. The players can be very proud of the record they have made for themselves and school, while members of the 1959 CHAMPIONSHIP team.

COACHES



CO-CAPTAINS





UNDERCLASS LETTERMEN

	Won	Lost	Tied
Sabetha	3	0	0
Effingham	1	1	1
Hiawatha	1	2	0
Horton	0	2	1

23 Offense Average

4 Defense Average

Sabetha	19	St. Peter and Paul	6
Sebetha	52	Centralia	0
Sabetha	0	Onaga	6
Sabetha	25	Horton	0
Sabetha	26	Hiawatha	6
Sabetha	15	Holton	6
Sabetha	19	Tecumseh	6
Sabetha	39	Marysville	0
Sabetha	13	Effingham	6



Best
in
the
Conference

A formidable
wall



SENIOR LETTERMEN

Dave Flentie, a real shifty back who added speed to our backfield. Dave was a three year letterman.

Bob Marthaler, a two year letterman, was a big defensive guard with a big voice.

Roger Aberle, a two year letterman, was an end who gave everything he had.

Garland George, a four year letterman, made a real tough tackle but had one weak spot, his toes.

Wayne Aeschliman, a one year letterman, was always in there fighting.

Jim Metzger, a one year letterman, who came through to make a real steady center.

Doug Aberle, a new boy who helped round out a fine backfield. Doug, a one year letterman.

Dave Stalder, a quarterback who kept the team jumping. Dave, a three year letterman.



SENIOR LETTERMEN

Ron Brooks, don't let him get in the open because you'll never catch him. Ron, a three year letterman.

Fred Fulton, a four year letterman known as the "meanest" man in the conference, once he got mean.

Jim Deaver, a one year letterman, was always ready to go.

John Garber, known as "Big John," gave that needed weight to the backfield. John was a four year letterman.

Jerry Cox, a one year letterman who always gave his heart.

Bob Lehman never said much but you always knew he was there when he tackled you. Bob was a two year letterman.

Ron Beans, a tough guard who always moved his man. Ron was a two year letterman.





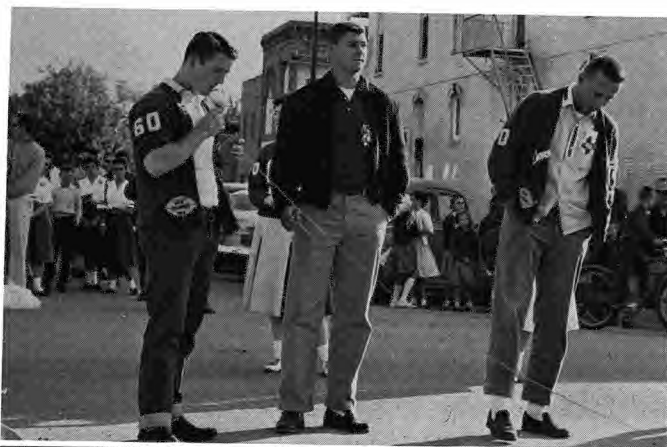
ELAINE AESCHLIMAN, JUDY JONES, PAT GREENE

Homecoming

A crisp night, a better than average team, faces of familiar alumni and a feeling of suspense in the air made homecoming of 1959 a success. The Bluejays won an overwhelming victory of 26 to 6 in the game against Hiawatha.

Miss Judy Jones was crowned Homecoming Queen of SHS by Fred Fulton. Her attendants were Elaine Aeschliman and Pat Greene, escorted by John Garber and Dave Stalder. Queen Judy and her attendants viewed the last half of the game from a gaily decorated platform.

Following the game Queen Judy officially opened the dance with her brother, Ed. Grads and students made the dance a success by attending.



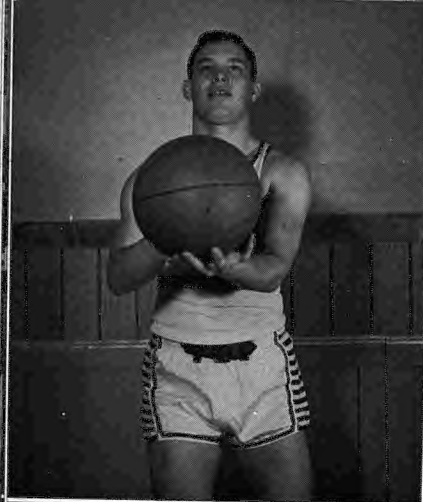


Champs Again

FIRST ROW: Jerry Cox, Dave Stalder, Garland Morris, John Garber, Ronnie Beans, Jim Deaver, Jim Metzger, Ron Brooks. SECOND ROW: Coach Trower, Larry Boltinghouse, Rich Ayers, Larry Grimm, Rich Scoby, Dan Mishler, Steve Herrmann, Coach DeWerff. THIRD ROW: Jerry Rison, Elgin Hartter, Bill Jones, Jerry Troxell, Dave Duey, Mike Montgomery, Bob Jack, Arlen Kaul. FOURTH ROW: Gary Hartter, Steve Wenger, Dennis Stalder, Reldon Boltinghouse, Pete Summers, Jim Estle, Steve Aberle, Bob Ayers.

Next Year's First String

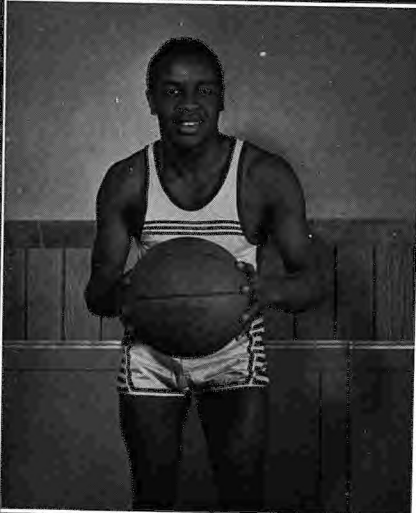
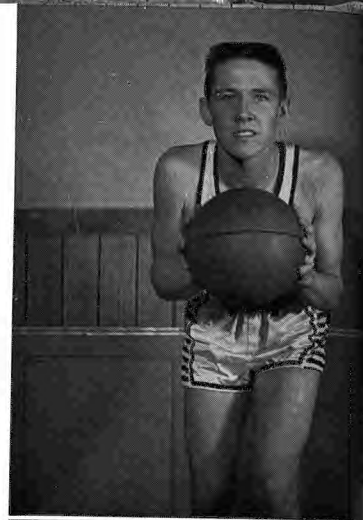




LETTERMEN (SENIORS)

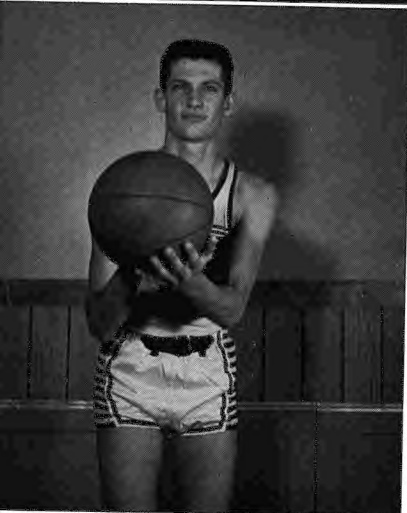
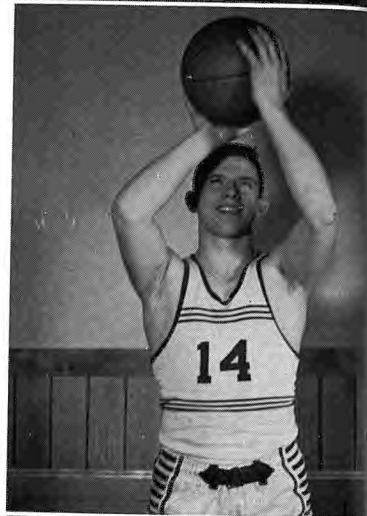
Ronnie Beans
Two-Year Letterman

Jim Deaver
One-Year Letterman



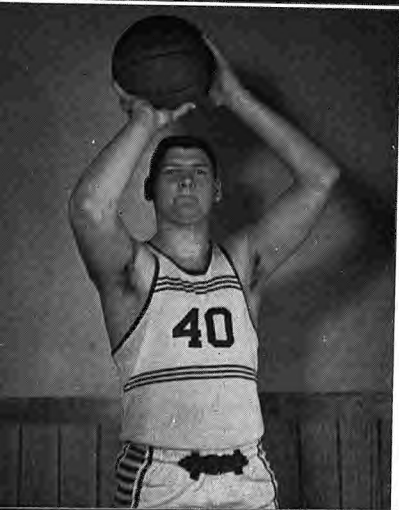
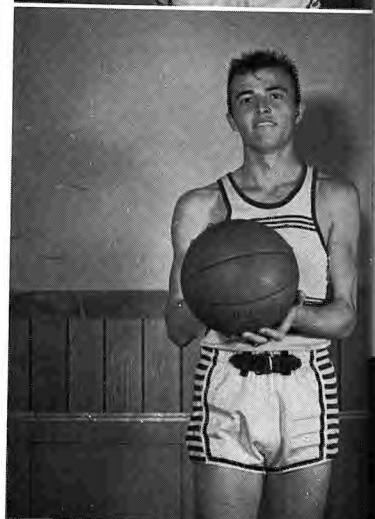
Ron Brooks
Two-Year Letterman

Jim Metzger
Two-Year Letterman



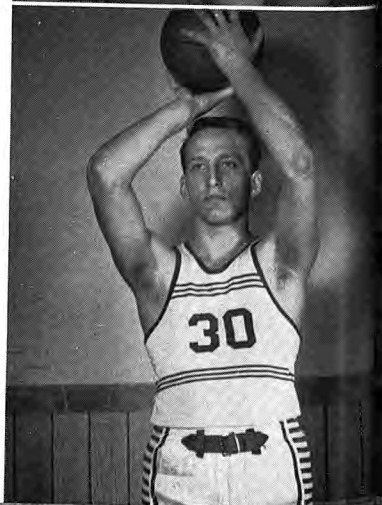
Jerry Cox
Two-Year Letterman

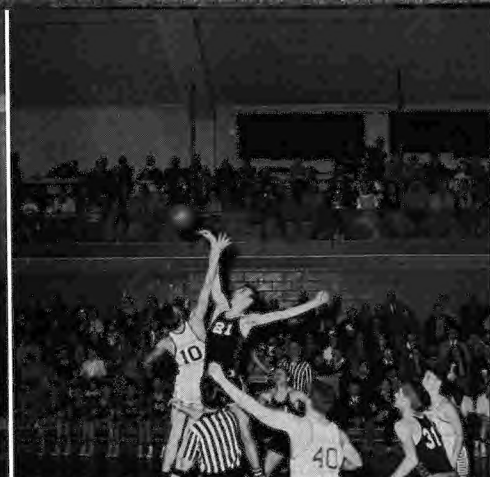
Garland Morris
Two-Year Letterman



John Garber
Four-Year Letterman

Dave Stalder
Three-Year Letterman





BASKETBALL SCHEDULE 1959-60

Dec. 4	Sabetha	38	Onaga	41
Dec. 8	Sabetha	53	Powhattan	46
Dec. 15	Sabetha	44	Holton	47
Dec. 18	Sabetha	39	Horton	36
Dec. 22	Sabetha	46	Seneca	38
Jan. 5	Sabetha	50	Marysville	54
Jan. 8	Sabetha	46	Hiawatha	43
Jan. 15	Sabetha	43	Effingham	44
Jan. 19	Sabetha	50	Powhattan	42
Jan. 23	Sabetha	40	Onaga	39
Jan. 26	Sabetha	72	Centralia	66
Jan. 29	Sabetha	57	Horton	48
Feb. 2	Sabetha	52	Seneca	50
Feb. 5	Sabetha	39	Hiawatha	36
Feb. 16	Sabetha	41	Holton	60
Feb. 19	Sabetha	<u>59</u>	Effingham	<u>50</u>
TOTAL:	Sabetha	769	Opponents	740

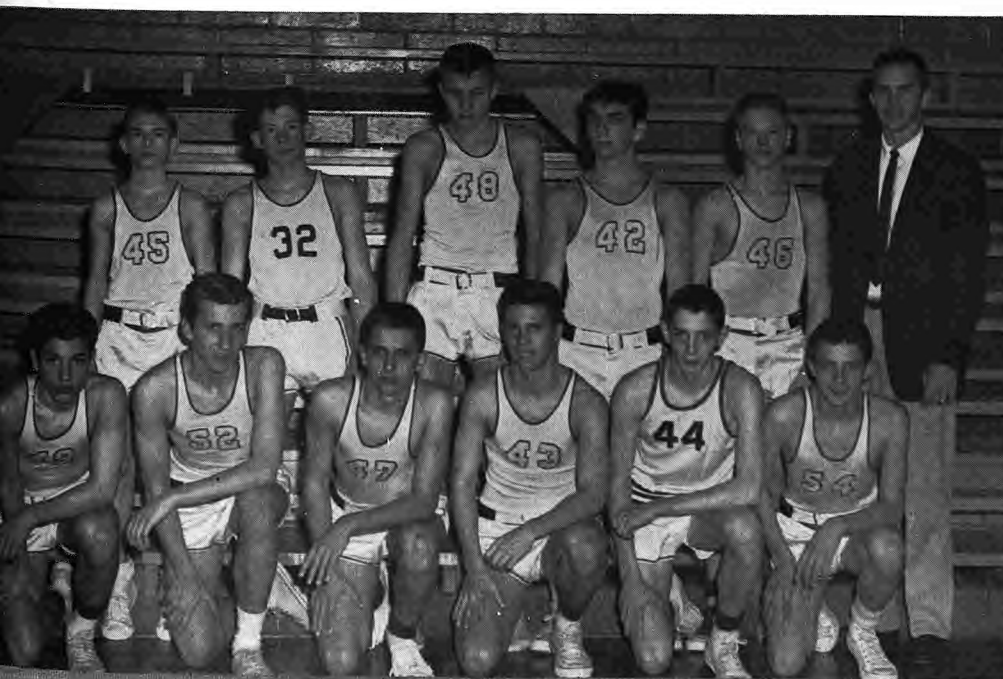


COACHES

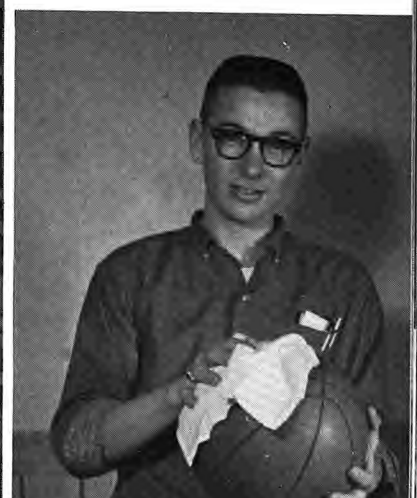
CONFERENCE STANDINGS

	Won	Lost
Sabetha	5	1
Effingham	4	2
Horton	2	4
Hiawatha	1	5

FRESHMAN SQUAD



MANAGER





Conference Runner-Ups

BOTTOM ROW: Garland Morris, Garland George, John Garber, Rog Aberle, Bob Lehmann, Ted Ruse, Dave Flentie, Ronnie Beans, Ron Brooks. SECOND ROW: Dale Bauman, Joe Ott, Larry Grimm, Steve Brammer, Bud Schuette, Steve Herrmann, Dan Mishler, Rich Scoby, Larry Boltinghouse. TOP ROW: Coach Myers, Ed. Kiester, Steve Wenger, Reldon Boltinghouse, Joe Brezina, Roger Hartter, Charles Davis, Coach Norris.



Mile Relay Champs Baker Relays

(RUSE, LEHMANN,
ABERLE, BROOKS.)



Lettermen

John Garber
Shot Put, Discus

Dave Flentie
Relays

Larry Boltinghouse
Dashes



Roger Aberle
Mile

Ed Kiester
Mile

Steve Herrmann
Javelin



Ronnie Beans
Pole Vault

Larry Grimm
440-yd. Dash

Dan Mishler
Half-Mile





Steve Wenger
Relays

Reldon Boltinghouse
Relays



Bob Lehmann
Dashes

Ron Brooks
Dashes

Rich Scoby
44-yd. Dash

Lettermen

Ted Ruse
Relays



Garland George
Shot Put

Garland Morris
High Jump

Steve Brammer
Pole Vault



ASSISTANT COACH
Wayne Myers

HEAD COACH
Lee Norris

Both Coach Norris and Coach Myers are leaving Sabetha this year, Mr. Norris after five years and Coach Myers after one year of coaching at Sabetha. Many records that will stand a long time have been set under them. The '60 wishes them equal success in the future.



Almost a clean sweep.

The S-Club is an honorary athletic association, on campus since 1922. Its purpose is to promote sportsmanship and clean athletics at Sabetha High School. Any letterman is eligible for membership.

S-Club





FIRST ROW: Marlene Locher, Marge Metzger, Janice Aberle, Linda Wenger, Sara Robinson, Sharyn Nesbitt, Mary Rokey. SECOND ROW: Agnes Jones, Judy Ogden, Linda Locher, Elaine Aeschliman, Willa Metzger, Judy Jones, Jackie Lortscher, Lois Clayton, Joan Humphrey, D'Ann Strahm, Pat Reid, Earlene Parli, Sherrill Minneman, Elaine Scoby, Miriam Aberle. THIRD ROW: Susan Hudson, Janet Wells, Betty Jones, Jeanette Stoldt, Karla Miller, Sandra Stauffer, Phyllis Thiemann, Janice Stoldt, Maurveen Beightel, Rita Tibbetts, Betty Bell, Billie Walz, Shirley Wenger, Mary Watkins, Pat Greene. FOURTH ROW: Mary Kistner, Pat Wenger, Peggy Wittmer, Nancy Grote, Eula Alderfer, Katy Kelly, Vicki Brown, Linda Davis, Shari Randolph, Linda Cupp, Dorothy Hunnicutt, Linda Rokey, Judy Aberle, Carol Metzger, Mrs. Norris, Sponsor. FIFTH ROW: Elaine Meyer, Karen Strahm, Linda Moore, Candy Rooney, Pam Matthes, Carol Geiger, Betty Bartram, Nikole VonBergen, Janet Lortscher, Marcia Ross, Norma Clayton, Emma Jones, Sandra Smith, Delores Wittmer, Jo Ann Wittwer, Carol Kehr. Not shown: Diane Grimm, Ellen Lawson, Sue Wertemberger, Ethel Zubler, Helen Berge, Darlene Hylton, Bonnie Larabee.



OFFICERS

FIRST ROW: Elaine Aeschliman, Activities; Willa Metzger, Uniforms; Linda Locher, President; Pat Greene, Secretary-Treasurer. SECOND ROW: Lois Clayton, Publicity; Pat Reid, Vice-President; Billie Walz, Decorations.

Pep Club

The Jay Jays' main purpose is to keep school spirit high and this they have certainly done. With the cheerleaders ahead of them their fighting spirit and attitude has continued throughout victory or defeat. School spirit may be difficult to define, but a lack of it is obvious to everyone. These Jay Jays never deserted their team even when the last play was completed and their loyalty to the Bluejays never failed. May they ever continue with this same spirit.



MARLENE LOCHER



LINDA WENGER



JANICE ABERLE

The Bluejay



SARA ROBINSON



MARY ROKEY

Cheerleaders

A-TEAM

PEP RALLY

B-TEAM



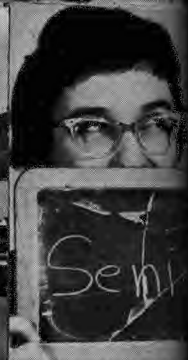
MARGE METZGER



"A" AND "B" TEAMS



SHARON NESBITT





Activities

Kayettes



KAYETTE CABINET

President - - - - -	MARY ROKEY
Vice-President - - - - -	PHYLLIS THIEMANN
Secretary - - - - -	JUDY JONES
Treasurer - - - - -	SUE WERTENBERGER
Program Chairman - - - - -	LINDA LOCHER
Special Programs - - - - -	JOAN HUMPHREY
Finance Director - - - - -	MARLENE LOCHER
World Service - - - - -	PATTY GREENE
Community Service - - - - -	KAREN STRAHM
School Service - - - - -	D'ANN STRAHM
Song Leader - - - - -	JUDY ABERLE
Pianist - - - - -	CANDY ROONEY
Recreation - - - - -	LINDA WENGER
Parliamentarian - - - - -	SARA ROBINSON
Points Chairman - - - - -	WILLA METZGER
Publicity - - - - -	PAT REID

SPONSORS - - - - - Miss Frudy
Miss Myers





FIRST ROW: Richard Moorhead, Phillip Close, James Metzger, John Garber, Jim Deaver, Jim Jellison, Garland George, Ronnie Beans, Mike Lanning. SECOND ROW: Elaine Meyer, Sue Ann Wertenberger, Bud Schuette, Wayne Aeschliman, Linda Wenger, Sara Robinson, Marlene Locher, Linda Locher, Willa Metzger. THIRD ROW: Emma Jones, Ellen Lawson, Agnes Jones, Diane Grimm, D'Ann Strahm, Norma Clayton, Lonnie Phillips, Jerry Cox, Karla Miller, Phyllis Thiemann, Jackie Lortscher, Mr. Trower. Ted Ruse and Janice Aberle not pictured.

F.B.L.A.



SPONSORS
Mr. Trower
Mrs. Norris

OFFICERS
President
PHYLLIS THIEMANN
Vice-President
JERRY COX
Secretary
KARLA MILLER
Treasurer
LONNIE PHILLIPS
Historian
JACKIE LORTSCHER





FIRST ROW: Byford Heiniger, Rich Moorhead, Wayne Aeschliman, Fred Fulton, Jerry Cox, Bob Marthaler, Eugene Herrmann, Doug Aberle, Roger Aberle, Mr. Frank Hackler. SECOND ROW: Gary Rokey, Steve Aberle, Phil Bestwick, Dick Scoby, Larry Grimm, Steve Broyles, Steve Herrmann, Delwin Meyer, Monte Carpenter, Danny Mishler, Charles Kiester. THIRD ROW: Paul Dienstbier, Melvin Robinson, Franklin Johnston, Paul Nickelson, Roger Hartter, Fred Aberle, Bob Steiner, Delmer Beightel.

F.F.A.

Officers' Table



The Great Orator





The F.H.A. of '59-'60

OFFICERS

SUE WERTENBERGER
JUDY OGDEN
ELAINE MEYER
D'ANN STRAHM
LOIS CLAYTON
KAREN STRAHM
JACKIE LORTSCHER
JOAN HUMPHREY
MAURVEEN BEIGHTEL
MISS FRUDY

President
Vice-President
Secretary-Treasurer
Program Chairman
Publicity Chairman
Historian
Parliamentarian
Pianist
Song Leader
Sponsor

Janice Aberle won the Betty Crocker Homemaker Contest and the Crisco Award for being the outstanding homemaker for 1959-1960.



TOP ROW: Candy Rooney, Cherlyn Randolph, Linda Davis, Mary Watkins, Jo Ann Wittmer, Norma Clayton, Agnes and Emma Jones, Helen Berge, Nichol Von Bergen. SECOND ROW: Jeanette Stoldt, Sandra Stauffer, Billie Walz, Rita Tibbetts, Betty Bell, Vickie Brown, Janette Strahm, Eula Alderfer, Sherrill Minneman, Ethel Zubler. BOTTOM ROW: Sponsor, Miss Frudy, and officers.

Science Club



SCIENCE CLUB MEMBERS, left to right, TOP ROW: Mike Montgomery, Gary Hartter, Ed Kiester, Joe Ott, Steve Clark, Delbert Kehr. SECOND ROW: Mr. Don Scoby, sponsor; Bert Flack, Kent Marment, Arlen Kaul, Steve Wenger, Jerry Gates. THIRD ROW: Donald Fletchall, Charles Davis, Artie Smith, Dave Duey, Bob Deaver, Jim Summers, Garry Rokey.

Two Dummies

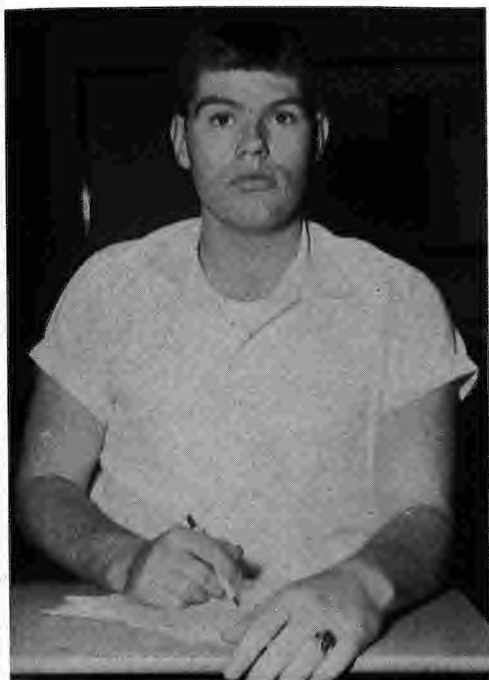


Science Club Officers



New Telescope





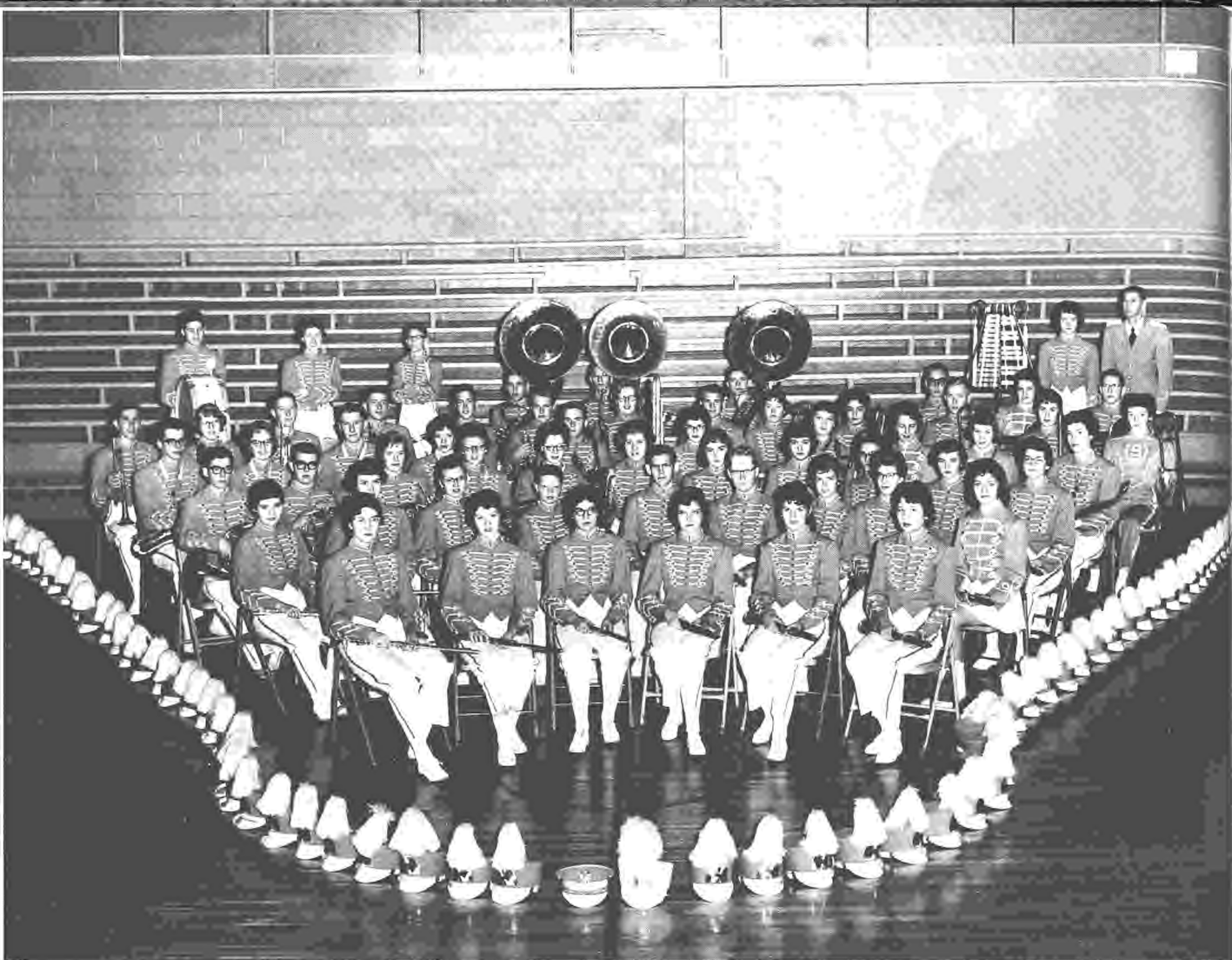
CHARLES WELLS - Editor



JAMES METZGER - Assistant Editor

The Seniors cooperated very well to make the paper a success. This year the paper was offered as a school service.





Concert Band

TROMBONES

Linda Locher
Mary Rokey
Robert Deaver
Ellen Lawson
Norma Clayton

BARITONES

Willa Metzger
Charles Baskett
Gordon Snyder

CORNETS AND TRUMPETS

Bud Schuette
Linda Rokey
Jim Deaver
Don Fletchall
Dave Duey
Galen Brammer
Mary Kistner
Charles Kiester

OBOE

Elaine Aeschliman

BASSOON

Pat Greene

TYMPANI

Joan Humphrey

BASS CLARINETS

Earlene Parli
Judy Jones
Karen Strahm
Marcia Ross

DRUMS

Barry Molineux
Bob Ayers

BASS VIOL

Lois Clayton

BASS

James Metzger
Jim Jellison
Lonnie Phillips

CLARINETS

Candy Rooney
Janet Wells
Pat Wenger
Sandra Smith
Sherrill Minneman
Sue Hudson
Elaine Scoby
Carol Metzger
Rita Tibbets
Jackie Lortscher
Everett Hartter
Eddie Kiester
Gary Rokey
Linda Cupp

ALTO SAXOPHONES

Ted Ruse
Linda Wenger
Gary Miller
Janet Lortscher
Steve Brammer

TENOR SAXOPHONES

Marlene Locher
D'Ann Strahm

BARITONE SAXOPHONE

Pat Reid

FLUTES

Sara Robinson
Nancy Grote
Phyllis Thiemann
Marge Metzger
Sharon Nesbitt

HORNS

Judy Aberle
Mike Lanning
Rich Ayers



Marching Band



WILLA
METZGER

PAT
GREENE

SANDRA
SMITH

JUDY
JONES



Majorettes



LINDA LOCHER
Drum Major



The SAX TRIO composed of Ted Ruse, Linda Wenger, and Marlene Locher went to state music festival for the third year.



Ted Ruse has received a I rating at the state music festival for the third consecutive year.



Donnie Fletchall, Linda Rokey, and David Duey compose the TRUMPET TRIO. Their playing always receives compliments.



BOTTOM ROW: Marlene Locher, D'Ann Strahm, Gary Miller, Linda Wenger, Ted Ruse, Pat Reid, Judy Jones, Lois Clayton, Linda Locher. TOP ROW: Roger Aberle (announcer), Donnie Fletchall, Bud Schuette, Charles Baskett, Linda Rokey, Dave Duey, Bob Deaver, Mary Rokey, Bobby Ayers, Lewis Johnson (director).

This group of musicians has received acclaim all over the state. The organization has taken two tours playing for various schools throughout Kansas. With a sound similar to big name bands the stage band is always greeted with a huge turnout wherever it appears. This year forty public appearances were added to the name of the SABETHA STAGE BAND.



CLARINET CHOIR: Janet Wells, Candy Rooney. SECOND ROW: Carol Metzger, Sue Hudson, Sherrill Minneman, Sandra Smith, Pat Wenger. LAST ROW: Marcia Ross, Karen Strahm, Earlene Parli.



MEMBERS OF THE ALL-STATE BAND
Marcia Ross, Ted Ruse, Judy Jones,
Mary Kistner (All-State Chorus).



BAND COUNCIL

ELAINE AESCHLIMAN
President
JUDY JONES
Vice-President
SARA ROBINSON
Secretary-Treasurer
LOIS CLAYTON
Librarian
LINDA LOCKER
Assistant Director
LEWIS JOHNSON
Director

Vocal Department



TRIPLE TRIO

Left to right: Candy Rooney, Linda Locker, Norma Clayton, Mary Kistner, Maurveen Beightal, Janet Wells, Mary Rokey, Marlene Locher, Lois Clayton.



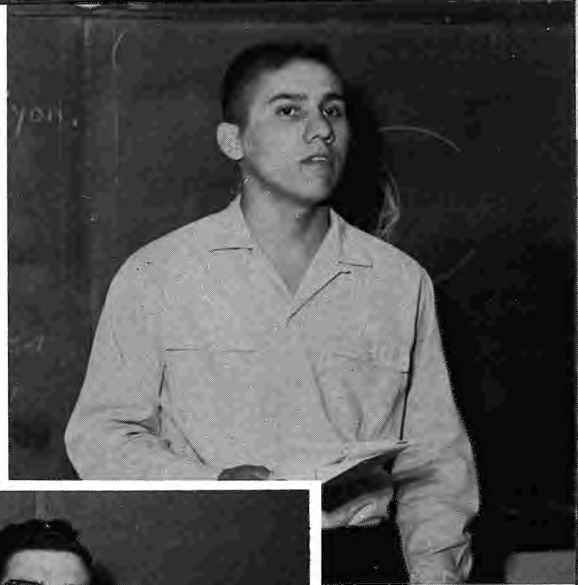
Mixed Chorus



Special Chorus

FRONT ROW: Maurveen Beightel, Carol Metzger, Linda Locher, Willa Metzger, Sara Robinson, Candy Rooney, Marlene Locher, Pat Reid, Norma Clayton, Judy Jones, Janice Aberle, Lois Clayton. MIDDLE ROW: Mary Kistner, Mary Rokey, Linda Wenger, Miriam Aberle, Judy Aberle, Barry Molineux, Forest Myers, Fred Aberle, Galen Brammer. LAST ROW: Lewis Johnson (director), Jim Deaver, Jim Jellison, Doug Aberle, Ted Ruse, Bud Schuette, Roger Aberle.

MR. CRUZ
Northeastern State,
Tahlequah, Oklahoma
Sociology, Spanish
Second Semester



MR. GILBERT
Ottawa U.
English
Second Semester



MRS. PORTER
Clerk for the Board of Education
Secretary for the Sabetha High School



MR. WEICK
Custodian



"The Offending Hand"

On December 11, 1959, the Junior Class presented their annual class play. This play was a new experience for everyone. It was a three-act drama concerning Juvenile Delinquency.

Martin Lowry - - - - -	ANDY MOORHEAD
Jean Lowry - - - - -	HELEN BERGE
Dave Beamish - - - - -	GORDON SNYDER
Aunt Silly - - - - -	SUE ANN WERTENBERGER
Connie Raymond - - - - -	DIANE GRIMM
Ken Lowry - - - - -	STEVE BRAMMER
"Luckie" Hobson - - - - -	LONNIE PHILLIPS
Beryl Youd - - - - -	ELLEN LAWSON



Home Again



Gunsmoke



Walking



Thanks



Drink to it



SENIOR PLAY CAST

FRONT ROW: Ted Ruse, Judas; Roger Aberle, Joel; Mary Rokey, Zara; James Metzger, Stephan; Fred Fulton, The Nazarene; Ronnie Beans, Anak. MIDDLE ROW: Jeanette Stoldt, Mary of Magdalene; Billie Walz, Cozbi; Willa Metzger, Tirzah; Lois Clayton, Ruth; Candy Rooney, Rheba; Linda Locher, Rahel; Patty Greene, Lydia; Linda Wenger, Jorah; Jackie Lortscher, Ackshah; Karen Hamilton, Mary; Karla Miller, Lara. BACK ROW: David Flentie, Pilate; Judy Jones, Saphira; Robert Deaver, John; Richard Moorhead, Gallim; Jerry Cox, Caiaphas; David Stalder, Paulus; Mike Lanning, Claudio; Charles Wells, Phlegon; John Garber, Marc; Bob Lehmann, Simon Peter; Everett Hartter, Denjel.

Shadow of a Cross





President - - - - - DELBERT KEHR
 Vice-President - - - - - CANDY ROONEY
 Secretary - - - - - KAREN STRAHM
 Treasurer - - - - - CHARLES BASKETT
 Sponsor - - - - - MR. SCOBY

National Honorary Society



Judith Aberle, Lois Clayton, Janice Aberle, Willa Metzger, Jacalynn Lortscher, Marlene Locher, Roger Aberle, Gordon Snyder, Delbert Kehr, Karen Strahm, Helen Berge, Patricia Greene, Candy Rooney, Sandra Stauffer, Mary Rokey, Charles Baskett, Robert Deaver. Sponsor, Mr. Scooby.

Honor Roll



FIRST ROW: Vicki Brown, Nikki Von Bergen, Janet Wells, Candy Rooney, Judy Aberle, Marge Metzger, Sherrill Minneman, Pat Greene, Linda Locher, Mary Rokey, Lois Clayton. SECOND ROW: Ronnie Beans, Phyllis Thiemann, Roger Aberle, Gordon Snyder, Helen Berge, Joan Humphrey, Bob Deaver, Kent Marment, Mike Montgomery, Steve Wenger. THIRD ROW: Janice Aberle, Judy Jones, Ted Ruse, Steve Clark, Steve Brammer, Danny Mishler, Dave Flentie, Monte Carpenter.

Honorable Mention



PATTY GREENE

Attendant



JUDY JONES

Homecoming Queen



Roy a

ELAINE AESCHLIMAN

Attendant





JERRY COX
ELAINE MEYER

Sweetheart King and Queen

MARY ROKEY
Queen of the Hiawatha
Halloween Frolic



PHYLLIS THIEMANN

Miss Snowflake



alty



The Old Mill



Cross over the bridge

Holland Holiday Junior-Senior Prom

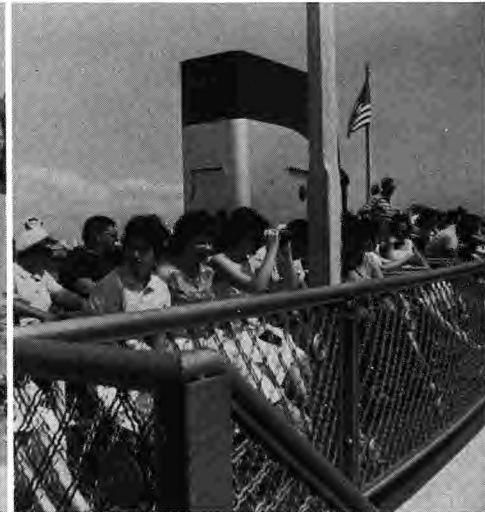
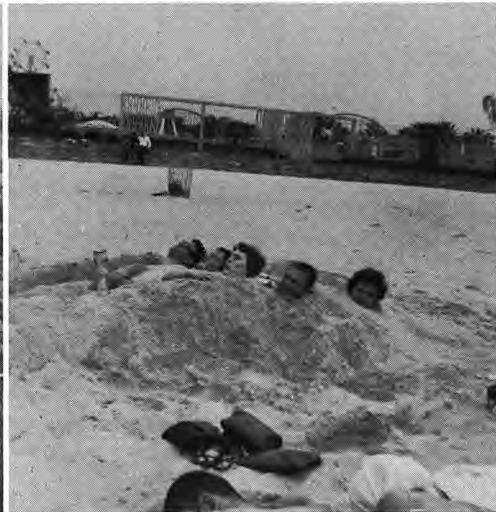
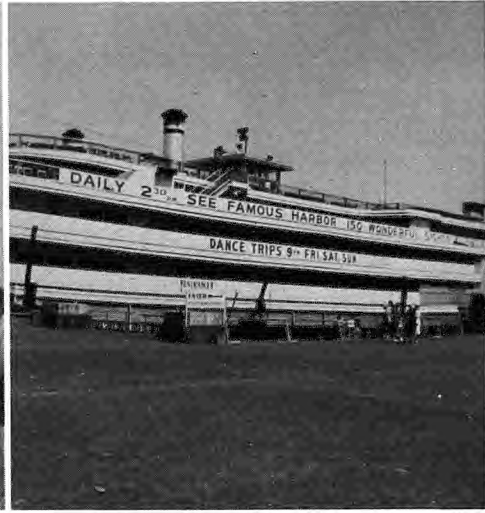
Wooden Shoe Dancers



The Hi-Lites



*Senior Trip
to
New Orleans*



Commencement



Co-Valedictorians
ROGER ABERLE
PAT GREENE

