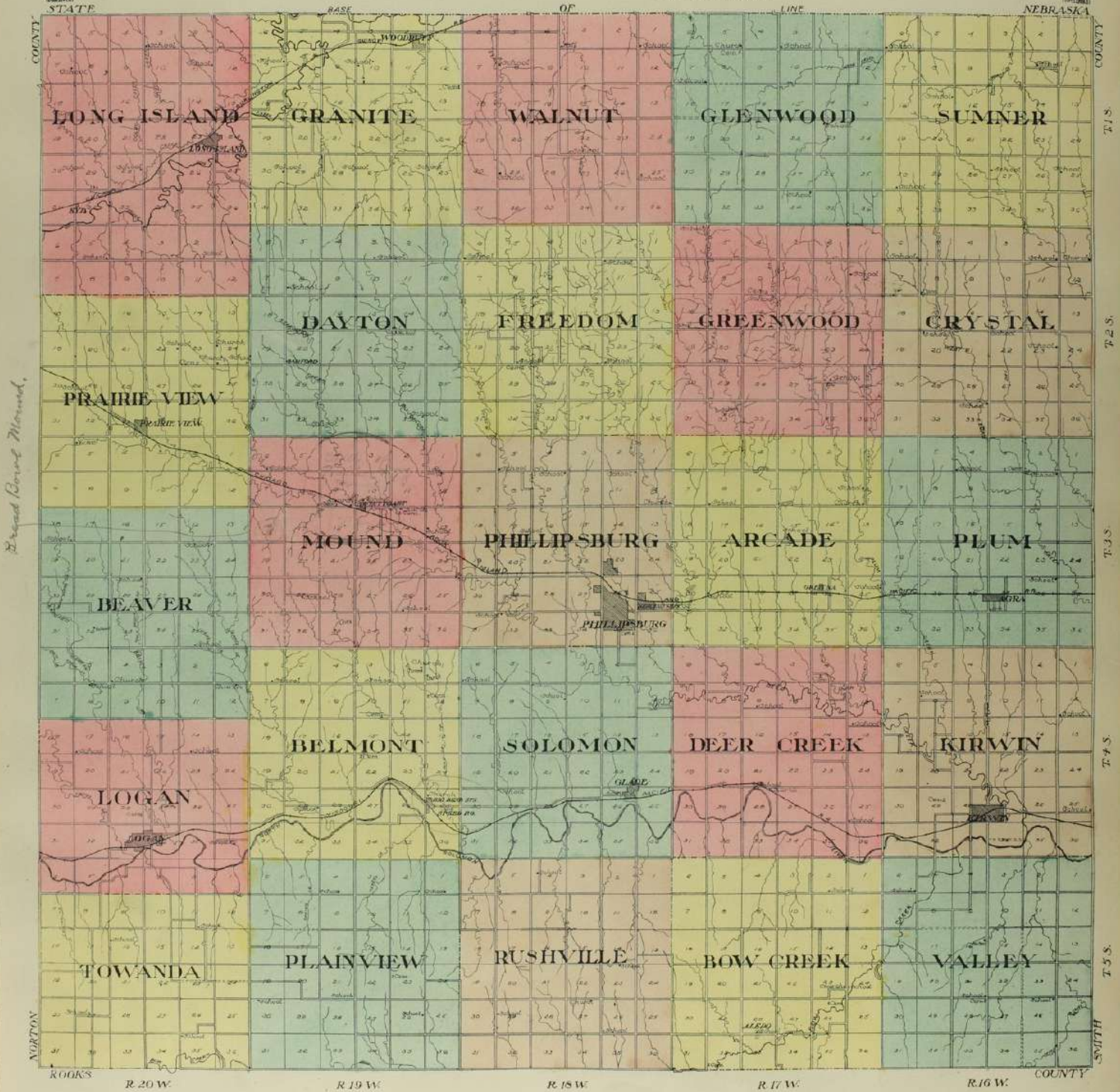


OUTLINE MAP OF PHILLIPS COUNTY KANSAS

Copyright 1917 by Geo. A. Ogle & Co.

Scale 1/60 of 1 inch to 1 mile

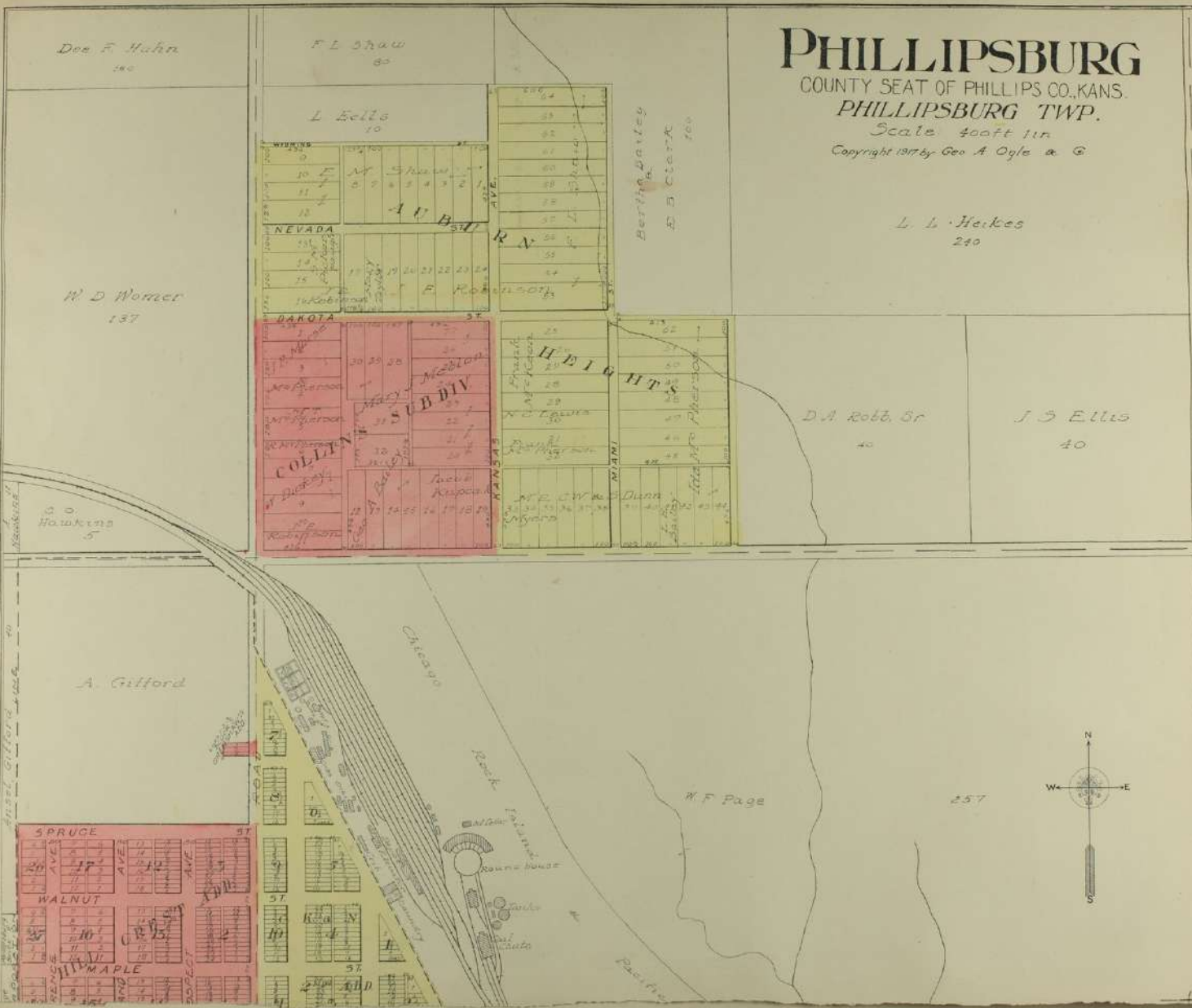
7



Broad Board Manned.

PHILLIPSBURG

COUNTY SEAT OF PHILLIPS CO., KANS.
PHILLIPSBURG TWP.
Scale 400ft 1in
Copyright 1917 by Geo. A. Oyle & Co.



Dec. F. Mohr
180

F. L. Shaw
80

L. Ellis
10

W. D. Warner
137

Hawkins
5

A. Gifford

SPRUCE
WALNUT
MAPLE
PROSPECT AVE

NEVADA
DAROTA
SUBDIV
COLLIER

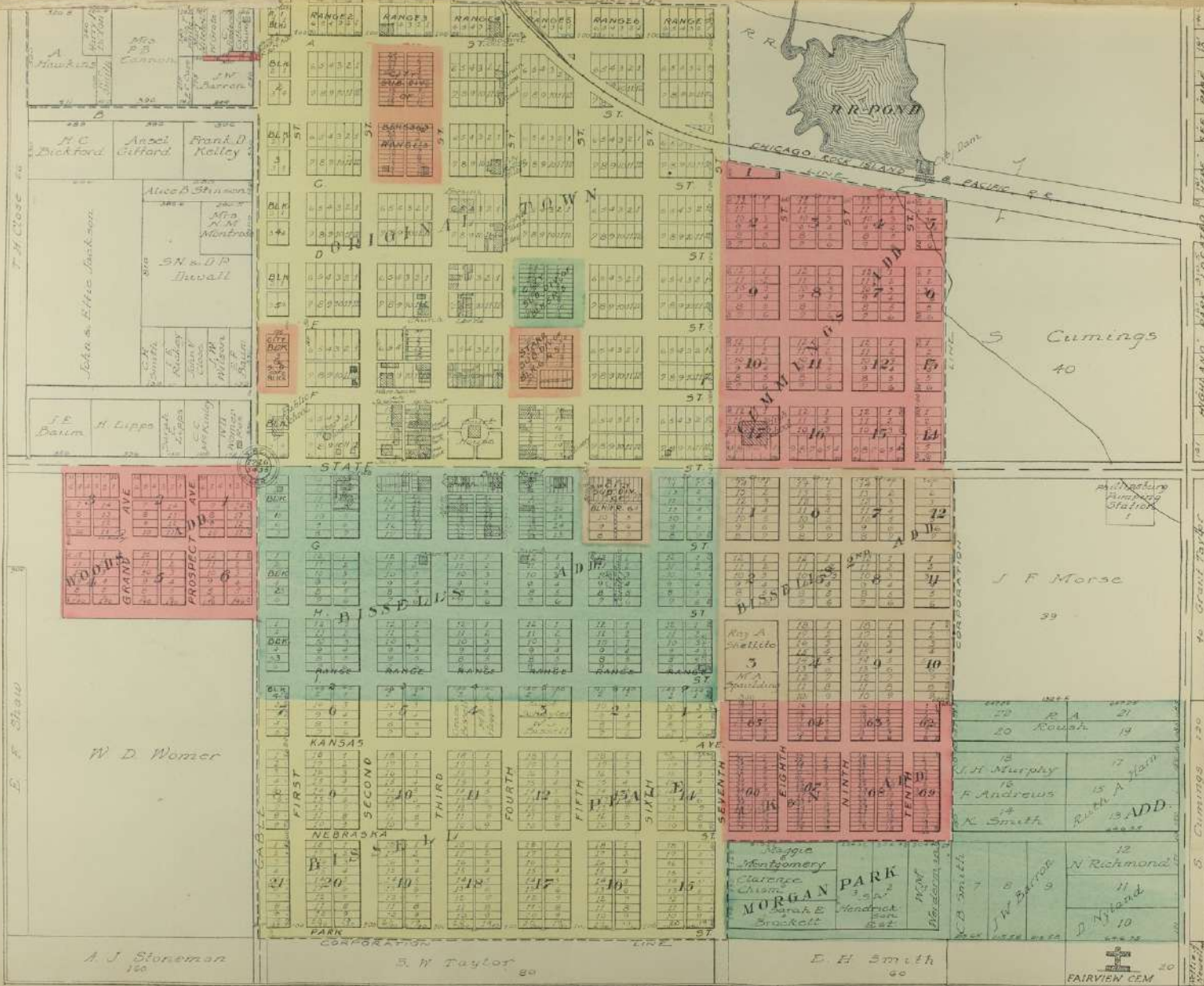
HIGHLANDS
MAY

D. A. Robb, Sr.
40

J. S. Ellis
40

K. F. Page
257

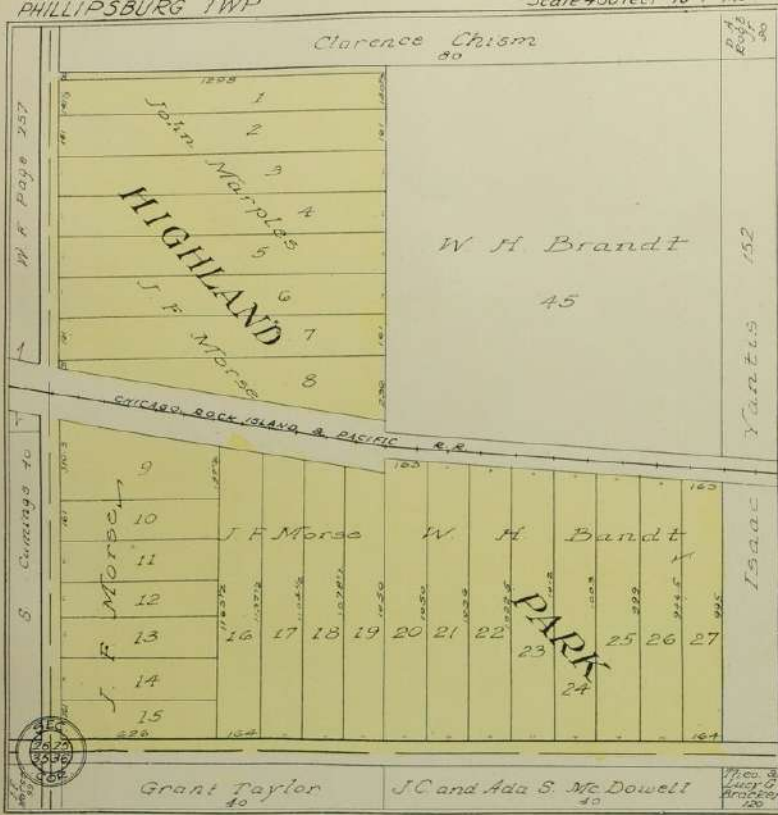




157 HIGHLAND AVE LOCATED HERE SEE PAGE 15
 158 Grant Taylor
 159 Cummings
 160
 161
 162
 163
 164
 165
 166
 167
 168
 169
 170
 171
 172
 173
 174
 175
 176
 177
 178
 179
 180
 181
 182
 183
 184
 185
 186
 187
 188
 189
 190
 191
 192
 193
 194
 195
 196
 197
 198
 199
 200

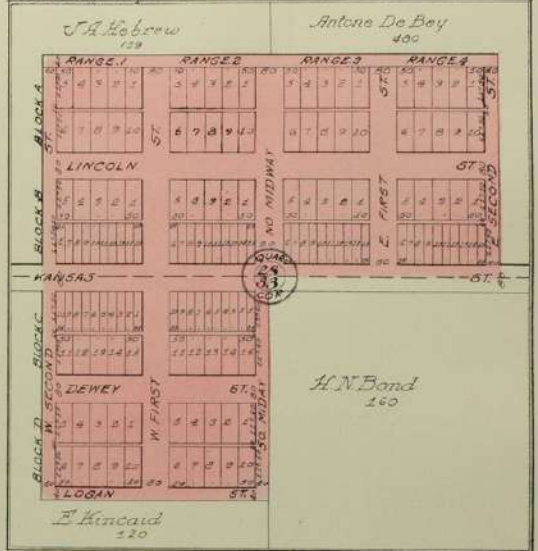
HIGHLAND PARK

ADJOINING THE CITY OF PHILLIPSBURG ON THE EAST
PHILLIPSBURG TWP
Scale 400 feet to 1 inch



ALEDO

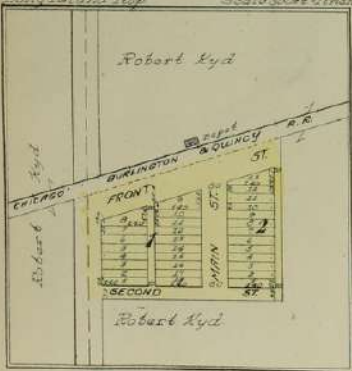
Scale 300 ft = 1 inch



KYD

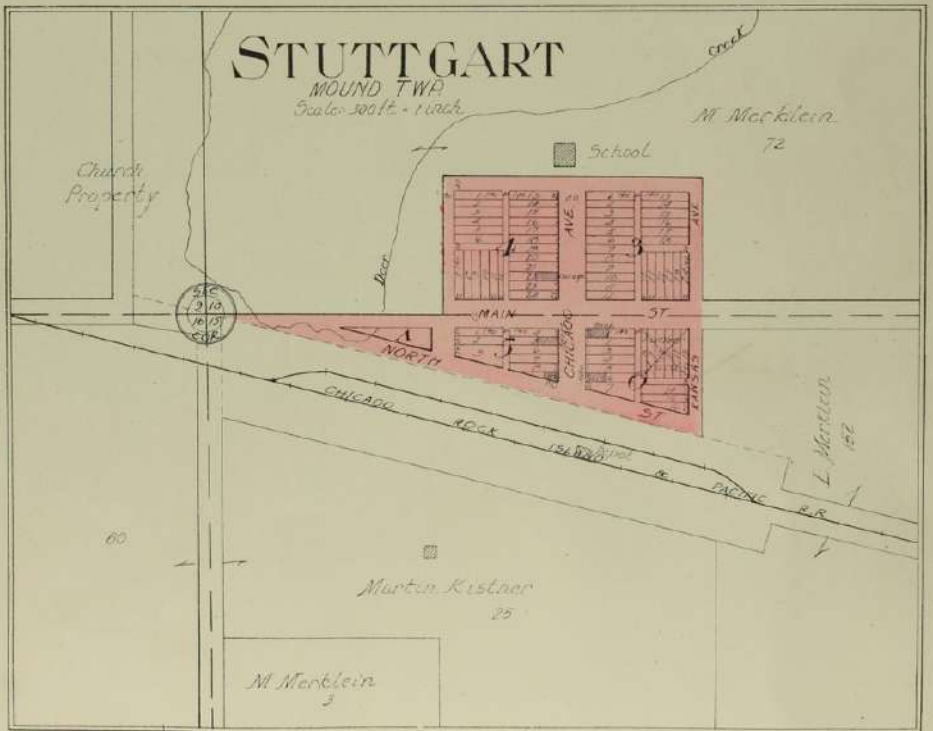
Located in NW 1/4 of Sec 12

Scale 300 ft = 1 inch



STUTTGART

MOUND TWP
Scale 300 ft = 1 inch



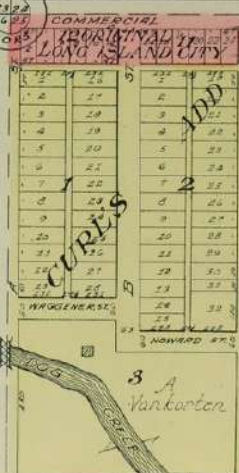


LONG ISLAND

LONG ISLAND TWP.
Scale - 300ft = 1inch

Harry Godfrey Est.
360

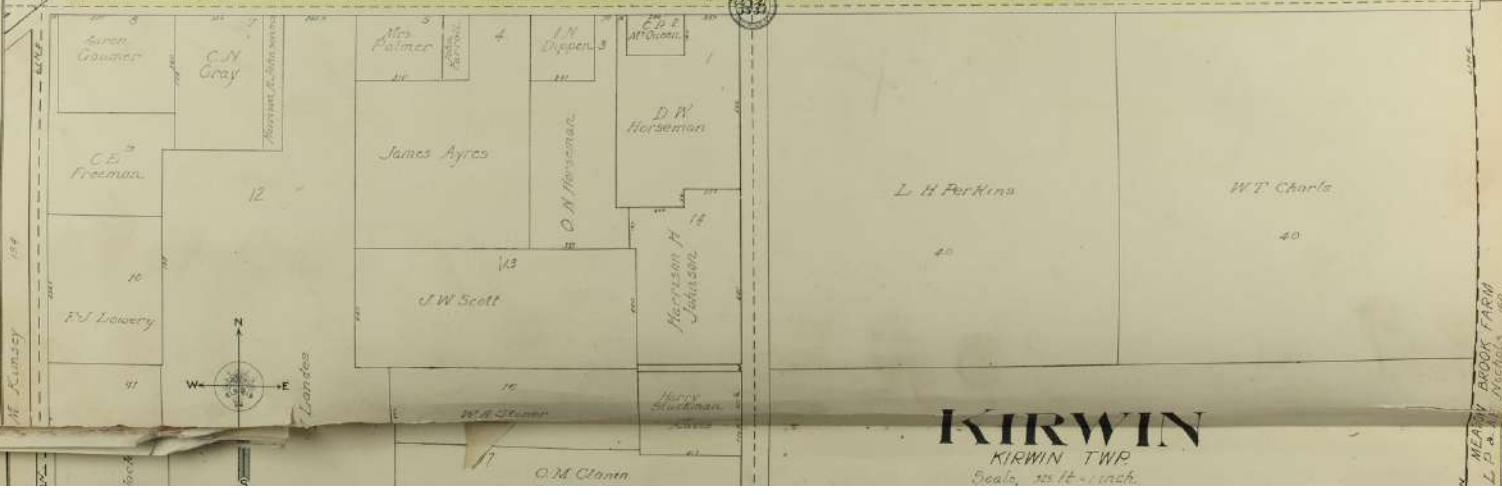
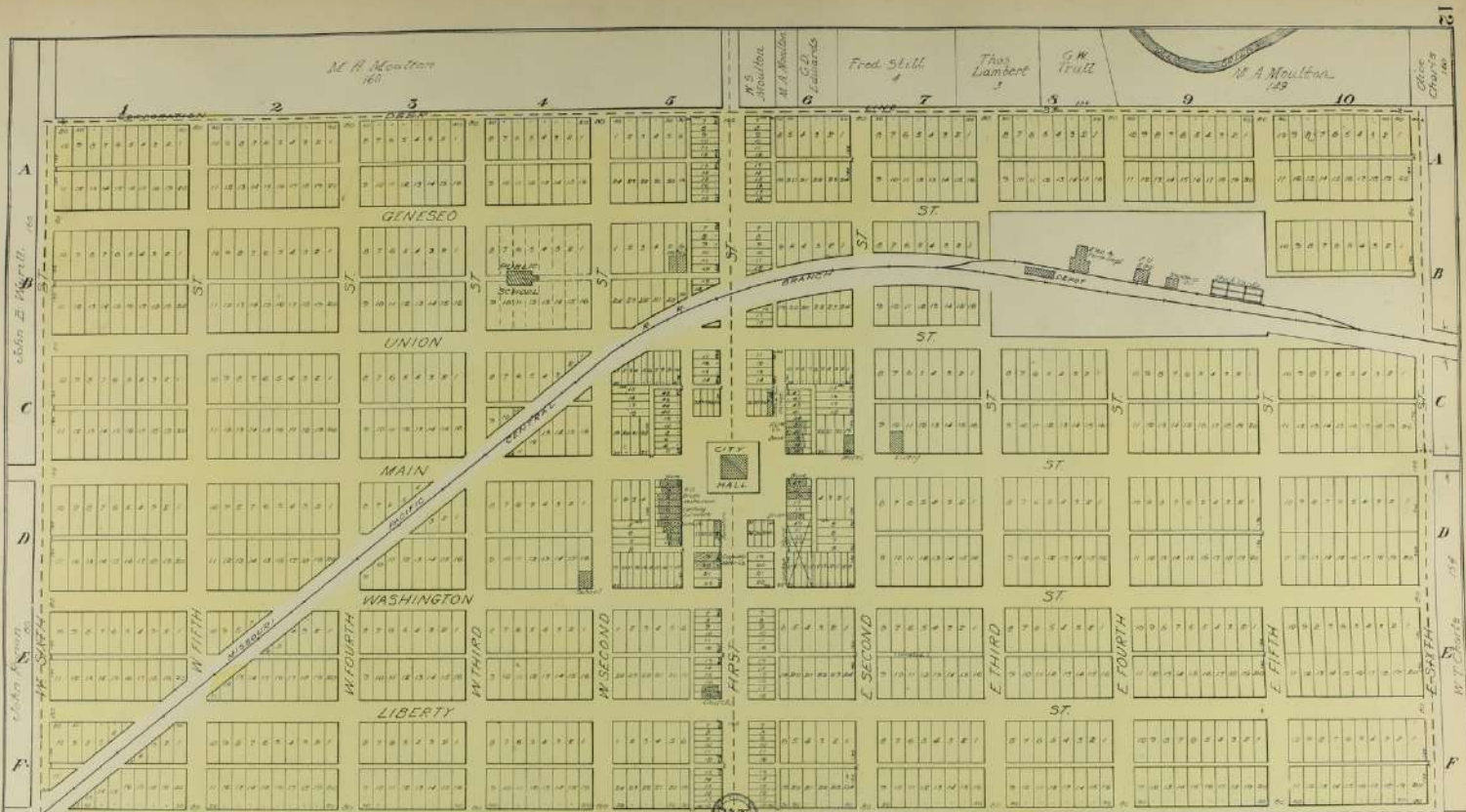
DEC
20
1895



D.E. Miller

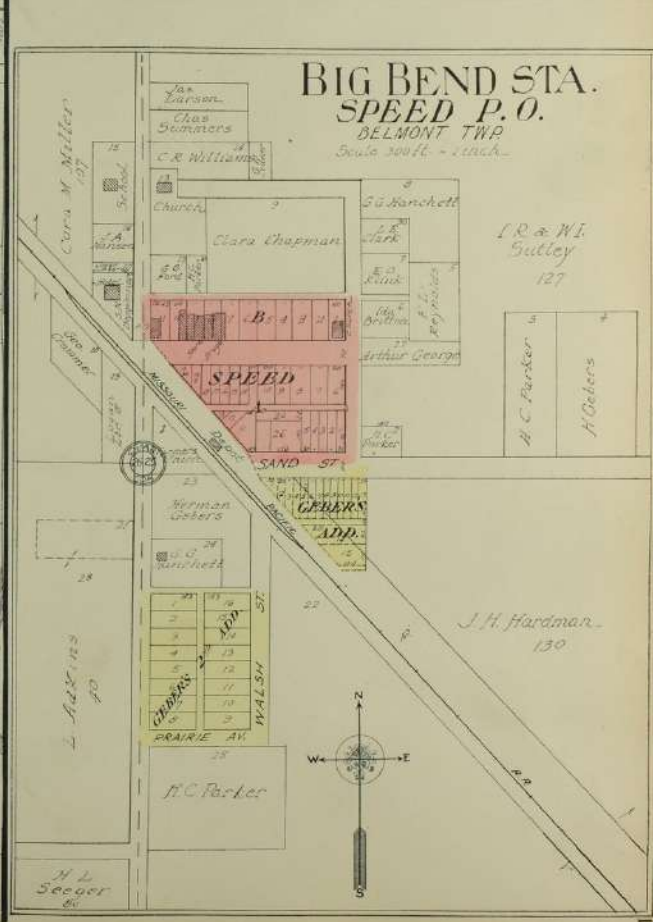
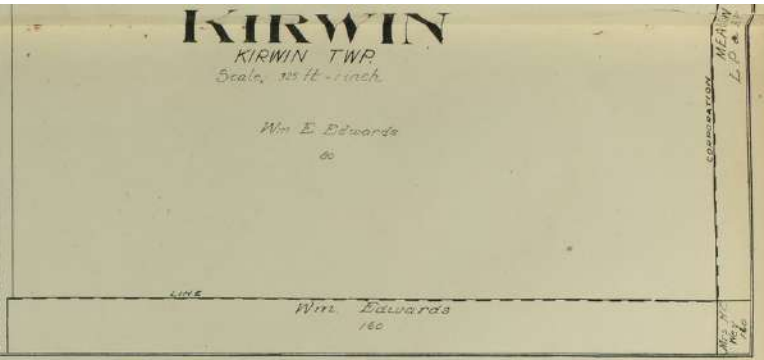
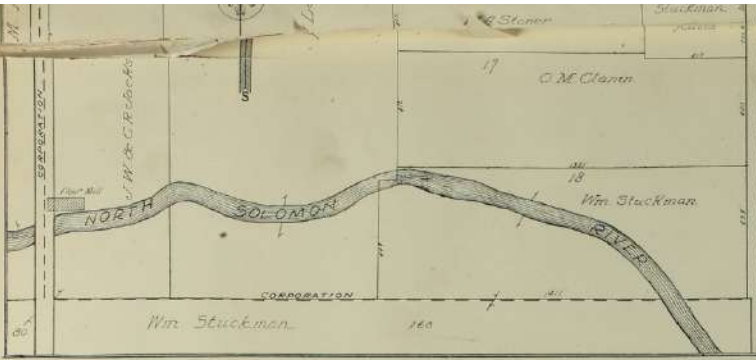
CURTIS

A. Vanortoren



KIRWIN
 KIRWIN TWP.
 Scale, 1/2" = 100'

MEADY BROOK FARM
 L.P. Nichols



LOGAN

LOGAN TWP
Scale 1/2" = 100'

M.E. Chapman 30

C.E. Burton 40

R.R. Drown 7

John French 20
R.R. Miller 20

E.A. Dye 40

Ella Howe 10

E.A. Dye 80

Adeline Whitmarsh 2

T.I. Gifford 20

J.S. Willrout 270

Public School

CHURCH

LOGAN

MAIN

COMMERCIAL

WALNUT

JEFFERSON

GRAVEL

SALMON

ST. 1, 2, 3, 4, 5, 6, 7, 8, 9, 10, 11, 12, 13, 14, 15, 16, 17, 18, 19, 20, 21, 22, 23, 24, 25, 26, 27, 28, 29, 30, 31, 32, 33, 34, 35, 36, 37, 38, 39, 40, 41, 42, 43, 44, 45, 46, 47, 48, 49, 50, 51, 52, 53, 54, 55, 56, 57, 58, 59, 60, 61, 62, 63, 64, 65, 66, 67, 68, 69, 70, 71, 72, 73, 74, 75, 76, 77, 78, 79, 80, 81, 82, 83, 84, 85, 86, 87, 88, 89, 90, 91, 92, 93, 94, 95, 96, 97, 98, 99, 100

FRIZZETT'S

2ND

3RD

4TH

5TH

6TH

7TH

8TH

9TH

10TH

11TH

12TH

13TH

14TH

15TH

16TH

17TH

18TH

19TH

20TH

21ST

22ND

23RD

24TH

25TH

26TH

27TH

28TH

29TH

30TH

31ST

32ND

33RD

34TH

35TH

36TH

37TH

38TH

39TH

40TH

41ST

42ND

43RD

44TH

45TH

46TH

47TH

48TH

49TH

50TH

51ST

52ND

53RD

54TH

55TH

56TH

57TH

58TH

59TH

60TH

61ST

62ND

63RD

64TH

65TH

66TH

67TH

68TH

69TH

70TH

71ST

72ND

73RD

74TH

75TH

76TH

77TH

78TH

79TH

80TH

81ST

82ND

83RD

84TH

85TH

86TH

87TH

88TH

89TH

90TH

91ST

92ND

93RD

94TH

95TH

96TH

97TH

98TH

99TH

100TH

BLAKELY'S 2ND

3RD

4TH

5TH

6TH

7TH

8TH

9TH

10TH

11TH

12TH

13TH

14TH

15TH

16TH

17TH

18TH

19TH

20TH

21ST

22ND

23RD

24TH

25TH

26TH

27TH

28TH

29TH

30TH

31ST

32ND

33RD

34TH

35TH

36TH

37TH

38TH

39TH

40TH

41ST

42ND

43RD

44TH

45TH

46TH

47TH

48TH

49TH

50TH

51ST

52ND

53RD

54TH

55TH

56TH

57TH

58TH

59TH

60TH

61ST

62ND

63RD

64TH

65TH

66TH

67TH

68TH

69TH

70TH

71ST

72ND

73RD

74TH

75TH

76TH

77TH

78TH

79TH

80TH

81ST

82ND

83RD

84TH

85TH

86TH

87TH

88TH

89TH

90TH

91ST

92ND

93RD

94TH

95TH

96TH

97TH

98TH

99TH

100TH

BLAKELY'S

1ST

2ND

3RD

4TH

5TH

6TH

7TH

8TH

9TH

10TH

11TH

12TH

13TH

14TH

15TH

16TH

17TH

18TH

19TH

20TH

21ST

22ND

23RD

24TH

25TH

26TH

27TH

28TH

29TH

30TH

31ST

32ND

33RD

34TH

35TH

36TH

37TH

38TH

39TH

40TH

41ST

42ND

43RD

44TH

45TH

46TH

47TH

48TH

49TH

50TH

51ST

52ND

53RD

54TH

55TH

56TH

57TH

58TH

59TH

60TH

61ST

62ND

63RD

64TH

65TH

66TH

67TH

68TH

69TH

70TH

71ST

72ND

73RD

74TH

75TH

76TH

77TH

78TH

79TH

80TH

81ST

82ND

83RD

84TH

85TH

86TH

87TH

88TH

89TH

90TH

91ST

92ND

93RD

94TH

95TH

96TH

97TH

98TH

99TH

100TH

BARRETT'S

1ST

2ND

3RD

4TH

5TH

6TH

7TH

8TH

9TH

10TH

11TH

12TH

13TH

14TH

15TH

16TH

17TH

18TH

19TH

20TH

21ST

22ND

23RD

24TH

25TH

26TH

27TH

28TH

29TH

30TH

31ST

32ND

33RD

34TH

35TH

36TH

37TH

38TH

39TH

40TH

41ST

42ND

43RD

44TH

45TH

46TH

47TH

48TH

49TH

50TH

51ST

52ND

53RD

54TH

55TH

56TH

57TH

58TH

59TH

60TH

61ST

62ND

63RD

64TH

65TH

66TH

67TH

68TH

69TH

70TH

71ST

72ND

73RD

74TH

75TH

76TH

77TH

78TH

79TH

80TH

81ST

82ND

83RD

84TH

85TH

86TH

87TH

88TH

89TH

90TH

91ST

92ND

93RD

94TH

95TH

96TH

97TH

98TH

99TH

100TH

ORIGINAL THIRD

1ST

2ND

3RD

4TH

5TH

6TH

7TH

8TH

9TH

10TH

11TH

12TH

13TH

14TH

15TH

16TH

17TH

18TH

19TH

20TH

21ST

22ND

23RD

24TH

25TH

26TH

27TH

28TH

29TH

30TH

31ST

32ND

33RD

34TH

35TH

36TH

37TH

38TH

39TH

40TH

41ST

42ND

43RD

44TH

45TH

46TH

47TH

48TH

49TH

50TH

51ST

52ND

53RD

54TH

55TH

56TH

57TH

58TH

59TH

60TH

61ST

62ND

63RD

64TH

65TH

66TH

67TH

68TH

69TH

70TH

71ST

72ND

73RD

74TH

75TH

76TH

77TH

78TH

79TH

80TH

81ST

82ND

83RD

84TH

85TH

86TH

87TH

88TH

89TH

90TH

91ST

92ND

93RD

94TH

95TH

96TH

97TH

98TH

99TH

100TH

SILVER PLY'S

1ST

2ND

3RD

4TH

5TH

6TH

7TH

8TH

9TH

10TH

11TH

12TH

13TH

14TH

15TH

16TH

17TH

18TH

19TH

20TH

21ST

22ND

23RD

24TH

25TH

26TH

27TH

28TH

29TH

30TH

31ST

32ND

33RD

34TH

35TH

36TH

37TH

38TH

39TH

40TH

41ST

42ND

43RD

44TH

45TH

46TH

47TH

48TH

49TH

50TH

51ST

52ND

53RD

54TH

55TH

56TH

57TH

58TH

59TH

60TH

61ST

62ND

63RD

64TH

65TH

66TH

67TH

68TH

69TH

70TH

71ST

72ND

73RD

74TH

75TH

76TH

77TH

78TH

79TH

80TH

81ST

82ND

83RD

84TH

85TH

86TH

87TH

88TH

89TH

90TH

91ST

92ND

93RD

94TH

95TH

96TH

97TH

98TH

99TH

100TH

Asa Larrick 30

Wm & K. Lohse 26

Fred Bigelow 14

Geo Bowman 46

John B. Wilson 40

J.M.R. Dunscomb

John Daugherty

W.A. McCarty

W.S. Willrout 80

MISSOURI

SOLOMON RIVER

FLOOD CHANNEL

PACIFIC CENTRAL BRANCH

RANGE E

RANGE 1ST

RANGE 2ND

RANGE 3RD

RANGE 4TH

RANGE 5TH

RANGE 6TH

RANGE 7TH

RANGE 8TH

RANGE 9TH

RANGE 10TH

RANGE 11TH

RANGE 12TH

RANGE 13TH

RANGE 14TH

RANGE 15TH

RANGE 16TH

RANGE 17TH

RANGE 18TH

RANGE 19TH

RANGE 20TH

RANGE 21ST

RANGE 22ND

RANGE 23RD

RANGE 24TH

RANGE 25TH

RANGE 26TH

RANGE 27TH

RANGE 28TH

RANGE 29TH

RANGE 30TH

RANGE 31ST

RANGE 32ND

RANGE 33RD

RANGE 34TH

RANGE 35TH

RANGE 36TH

RANGE 37TH

RANGE 38TH

RANGE 39TH

RANGE 40TH

RANGE 41ST

RANGE 42ND

RANGE 43RD

RANGE 44TH

RANGE 45TH

RANGE 46TH

RANGE 47TH

RANGE 48TH

RANGE 49TH

RANGE 50TH

RANGE 51ST

RANGE 52ND

RANGE 53RD

RANGE 54TH

RANGE 55TH

RANGE 56TH

RANGE 57TH

RANGE 58TH

RANGE 59TH

RANGE 60TH

RANGE 61ST

RANGE 62ND

RANGE 63RD

RANGE 64TH

RANGE 65TH

RANGE 66TH

RANGE 67TH

RANGE 68TH

RANGE 69TH

RANGE 70TH

RANGE 71ST

RANGE 72ND

RANGE 73RD

RANGE 74TH

RANGE 75TH

RANGE 76TH

RANGE 77TH

RANGE 78TH

RANGE 79TH

RANGE 80TH

RANGE 81ST

RANGE 82ND

RANGE 83RD

RANGE 84TH

RANGE 85TH

RANGE 86TH

RANGE 87TH

RANGE 88TH

RANGE 89TH

RANGE 90TH

RANGE 91ST

RANGE 92ND

RANGE 93RD

RANGE 94TH

RANGE 95TH

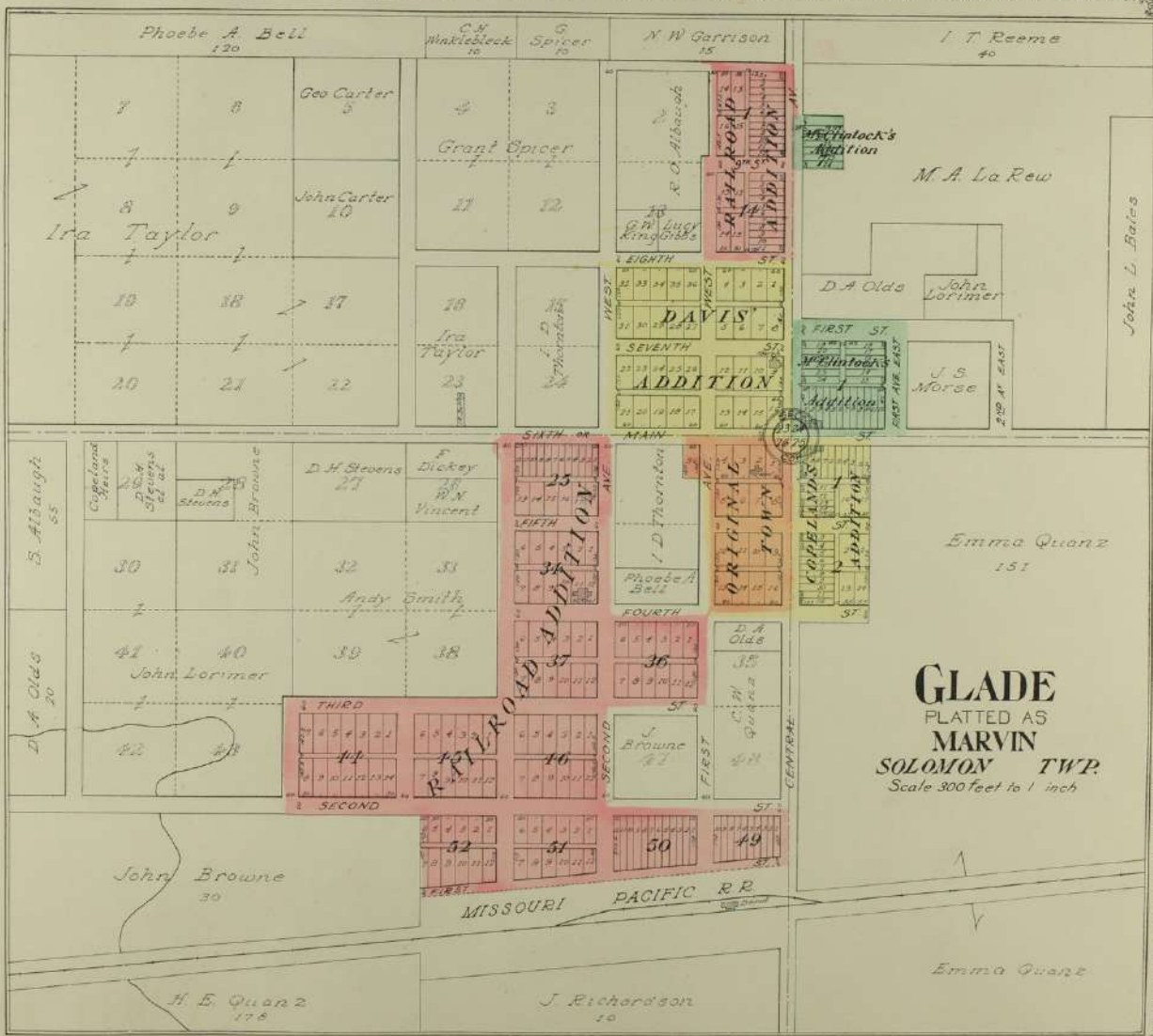
RANGE 96TH

RANGE 97TH

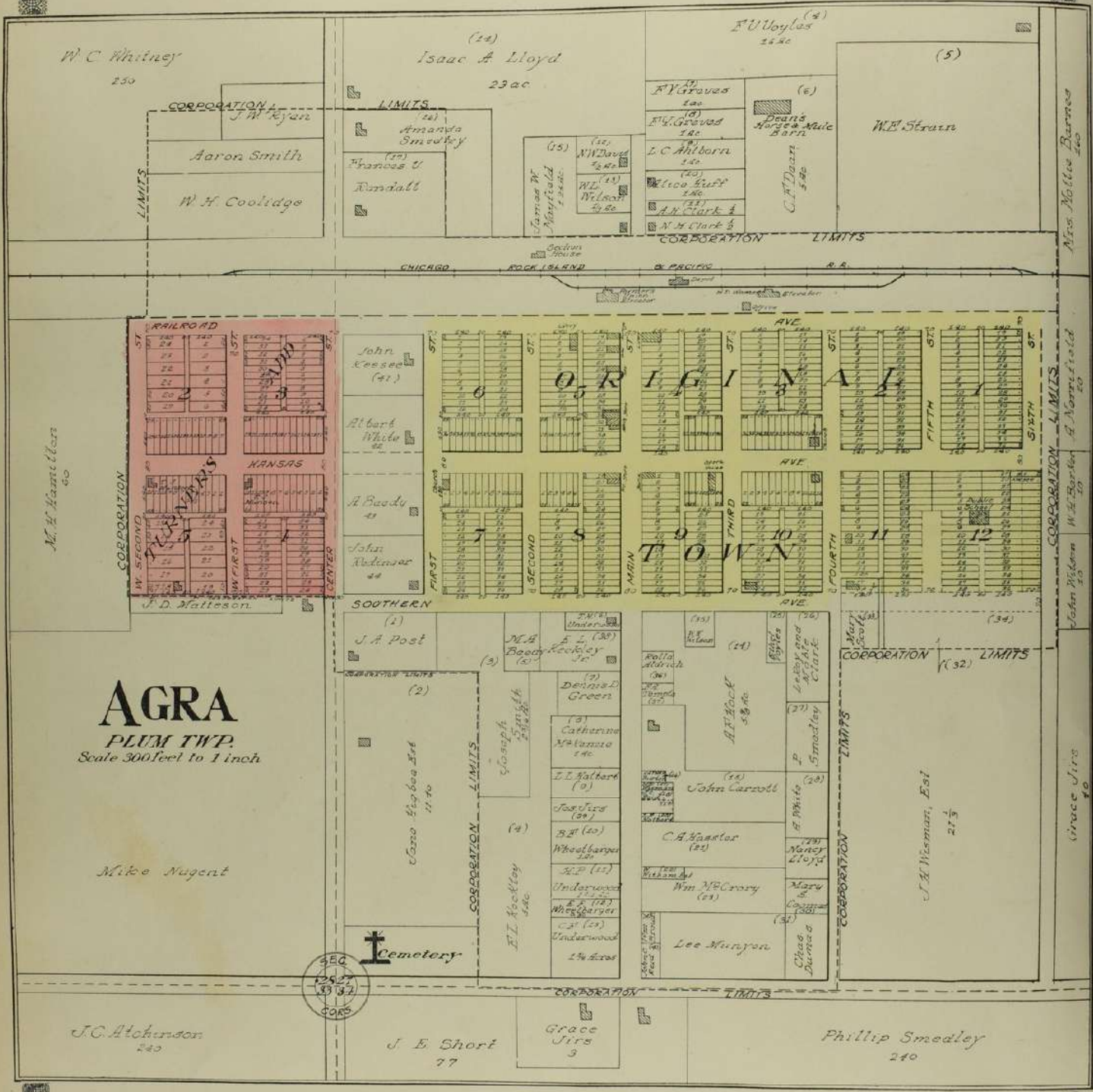
RANGE 98TH

RANGE 99TH

RANGE 100TH



GLADE
 PLATTED AS
MARVIN
SOLOMON TWP.
 Scale 300 feet to 1 inch



AGRA

PLUM TWP.

Scale 300 feet to 1 inch

Mike Nugent

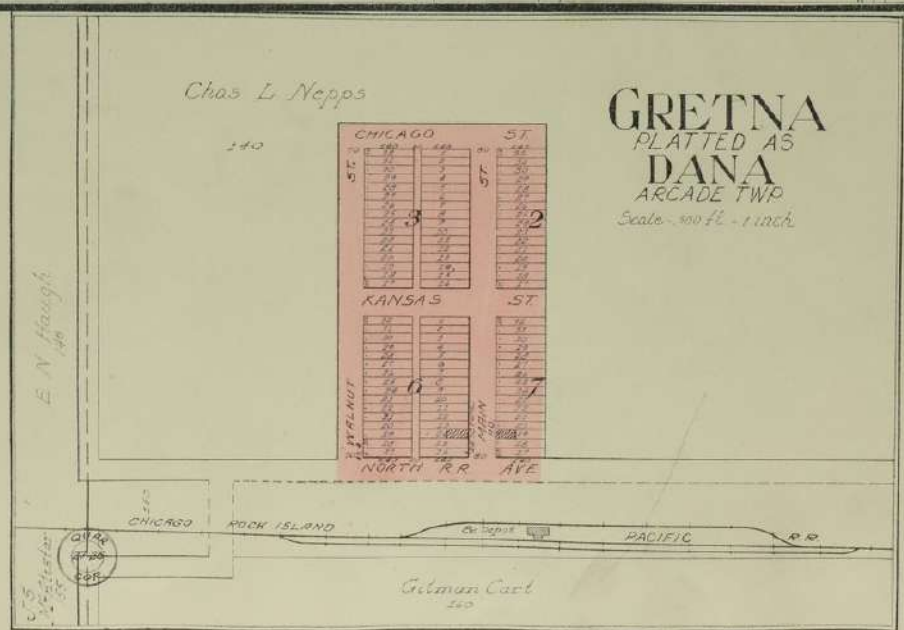
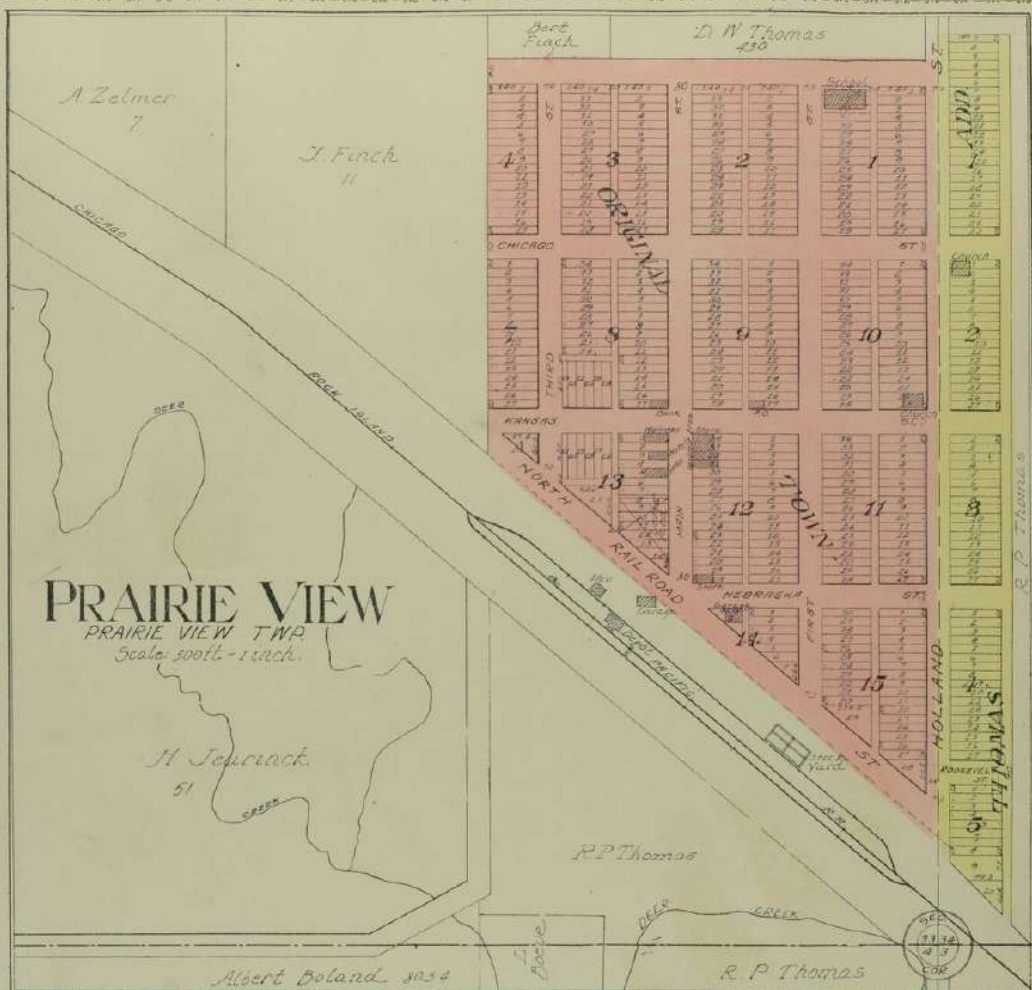


Mrs. Hollie Barnes 20

John Wilson 10
W.H. Barber 10
A. Norrfield 20

Grace Jiro 10

J.A. Hanson, Est
27 1/2





MAP OF
SUMNER
 TOWNSHIP

Scale 2 inches to 1 mile

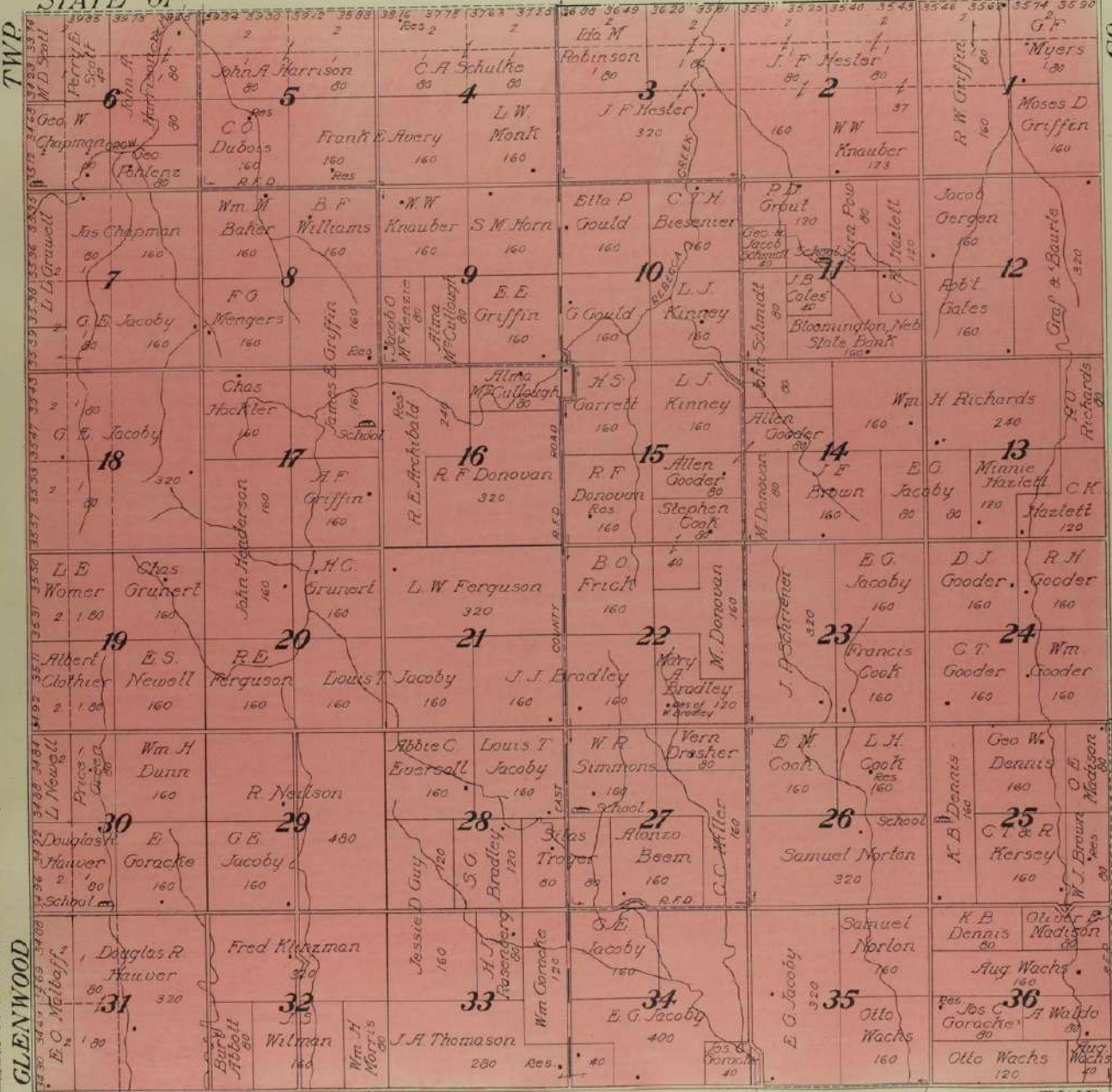
Township 1 South, Range 16 West of the 6th P. M.

STATE OF

NEBRASKA

TWP.

CO.



GLENWOOD

CRYSTAL

TWP.

SMITH

MAP OF
CRYSTAL
TOWNSHIP

Scale 2 inches to 1 mile

Township 2 South, Range 16 West of the 6th P. M.

SUMNER

TWP.

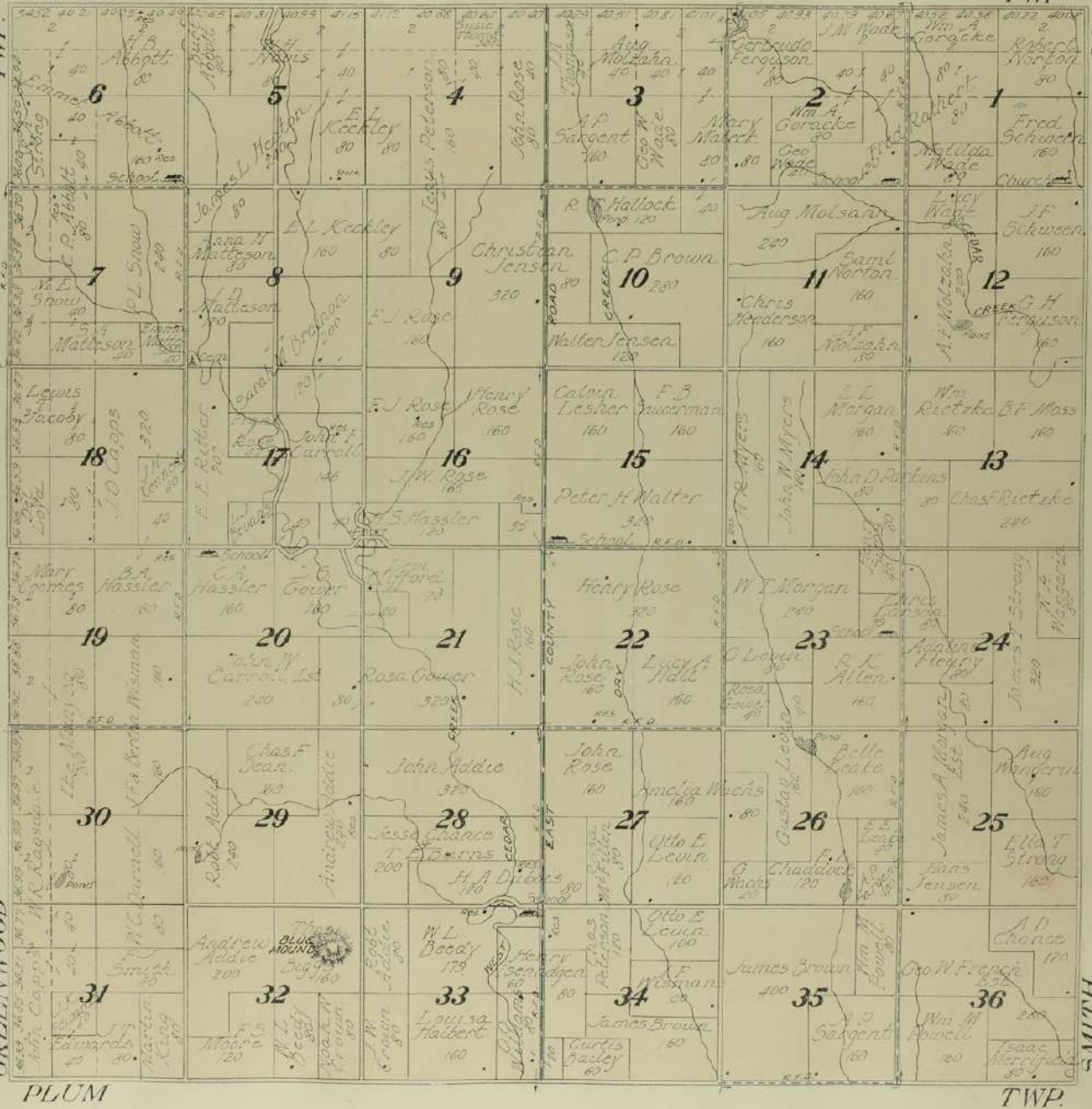
TWP.

GREENWOOD

PLUM

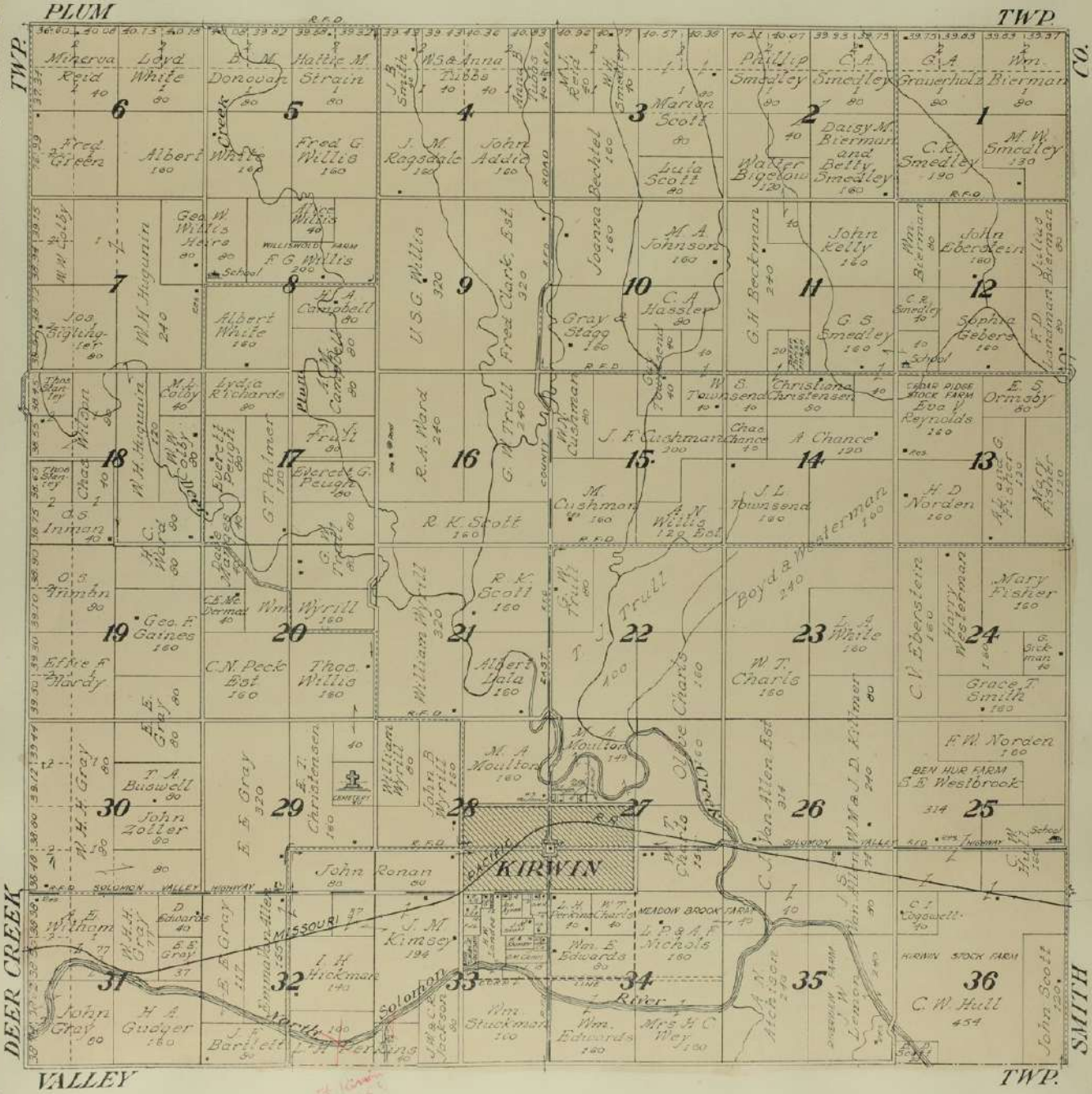
C.

SMITH



MAP OF
KIRWIN
TOWNSHIP
 Scale 2 inches to 1 mile

Township 4 South, Range 16 West of the 6th P. M.



DEER CREEK

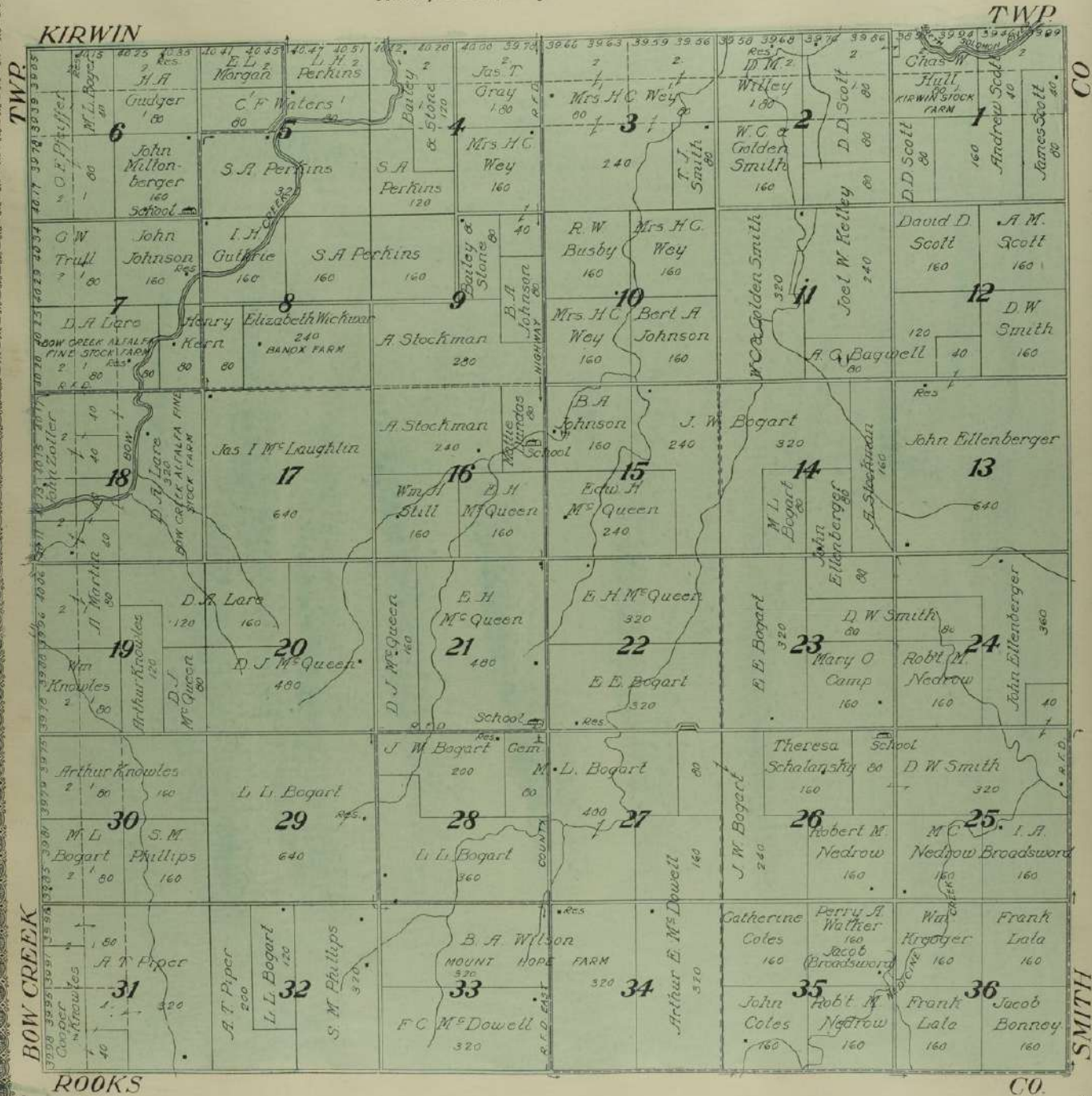
VALLEY


SMITH

TWP.

MAP OF
VALLEY
 TOWNSHIP
 Scale 2 inches to 1 mile

Township 5 South, Range 16 West of the 6th P. M.





MAP OF
GLENWOOD
 TOWNSHIP

Scale 2 inches to 1 mile

Township 1 South, Range 17 West of the 6th P. M.

STATE OF

NEBRASKA

WALNUT TWP	4236 C.D. Stone	4237 W.R. Boston J.S. Gifford J. S. Gifford G. C. Stone	4238 A.M. Ralston I.G. Hawley	4239 Chas. Li Wm. R. Boston Margaret M ^s Furlane	4240 Frank Woolman Margaret M ^s Furlane	4241 J.S. Gifford Roryue	4242 J.D. Nichols J.M. Lewis Eli Massey	4243 J.S. Gifford F.A. Massey	4157 J.S. Gifford Frank Schwoerer Chas.	4158 Isabella Schwoerer James Chapman Margaret Stanton	4159 Geo. Ferguson Amanda R. Scott	TWP
	4244 M.D. Stone	4245 C.H. Galt I.G. Hawley W.I. Hawley W. I. Galt	4246 Wm. R. Boston Margaret M ^s Furlane	4247 T.C. Perry Hattie H. Piggburn	4248 B.F. Heikes	4249 J.B. Filrod W.M. Lewis	4250 M.C. Clary Elmer Chapman	4251 Li L. Gruwel	4252 Lon Gruwel	4253 Lon Gruwel	4254 Li L. Gruwel	
	4255 D.F. Williams	4256 Oscar S. Kent John B. Miller	4257 W. I. Galt J. Brandon	4258 J.A. Russell E.M. Hellyer	4259 F.A. Massey	4260 Royal N. Smith Jerry M ^s Furlane	4261 Luzie James Chapman	4262 J.J. Peterson	4263 A.F. Schulthe	4264 G.E. Jacoby	4265 L.T. Jacoby	
	4266 Thomas D. Williams	4267 B.F. Bubbee Ann Whitten	4268 John Brandon	4269 R.H. Holland J.C. Matick	4270 Roy A. Cox	4271 Osa Borden	4272 Mary Keel	4273 M.M. Hull	4274 Pauline Schulth	4275 Alfred D. Otson	4276 Jennie M ^s Shane	
	4277 J.W. Shannon	4278 H.L. Ham	4279 H.L. Ham	4280 J.W. Shannon	4281 F.A. Miller	4282 Samuel Miller	4283 R.M. Marlan	4284 J.M. Castle	4285 Earl Hoshell	4286 John Selt	4287 Lewis Newell	
	4288 J.W. Williams	4289 C.D. Brown	4290 H.L. Ham	4291 J.W. Shannon	4292 F.A. Miller	4293 William Burr	4294 R.M. Marlan	4295 J.M. Castle	4296 Earl Hoshell	4297 John Selt	4298 Lewis Newell	
	4299 J.W. Williams	4300 C.D. Brown	4301 H.L. Ham	4302 J.W. Shannon	4303 F.A. Miller	4304 William Burr	4305 R.M. Marlan	4306 J.M. Castle	4307 Earl Hoshell	4308 John Selt	4309 Lewis Newell	
	4310 J.W. Williams	4311 C.D. Brown	4312 H.L. Ham	4313 J.W. Shannon	4314 F.A. Miller	4315 William Burr	4316 R.M. Marlan	4317 J.M. Castle	4318 Earl Hoshell	4319 John Selt	4320 Lewis Newell	
	4321 J.W. Williams	4322 C.D. Brown	4323 H.L. Ham	4324 J.W. Shannon	4325 F.A. Miller	4326 William Burr	4327 R.M. Marlan	4328 J.M. Castle	4329 Earl Hoshell	4330 John Selt	4331 Lewis Newell	
	4332 J.W. Williams	4333 C.D. Brown	4334 H.L. Ham	4335 J.W. Shannon	4336 F.A. Miller	4337 William Burr	4338 R.M. Marlan	4339 J.M. Castle	4340 Earl Hoshell	4341 John Selt	4342 Lewis Newell	

GREENWOOD

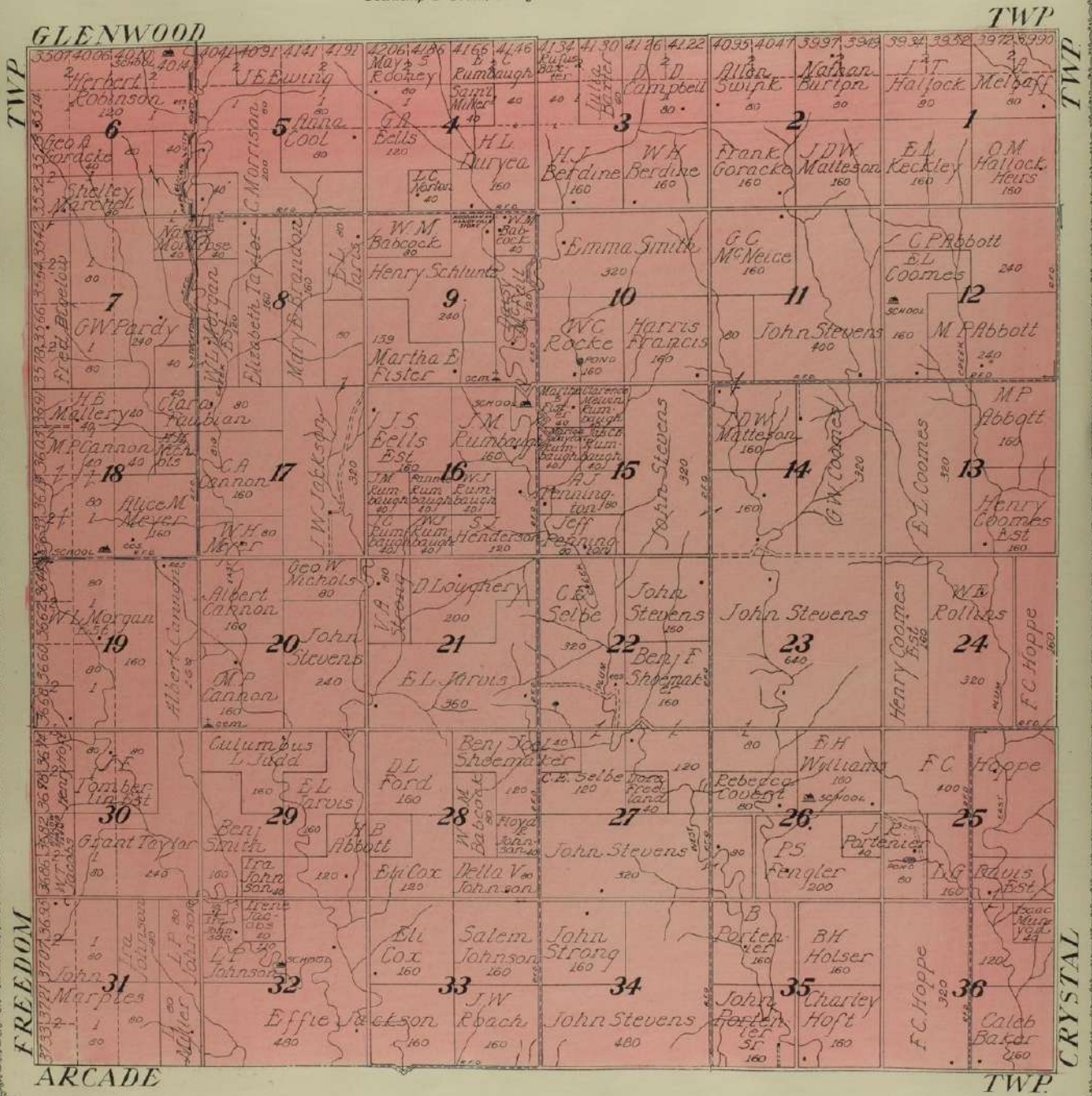
TWP

SUMNER



MAP OF
GREENWOOD
TOWNSHIP
 Scale 2 inches to 1 mile

Township 2 South, Range 17 West of the 6th P. M.



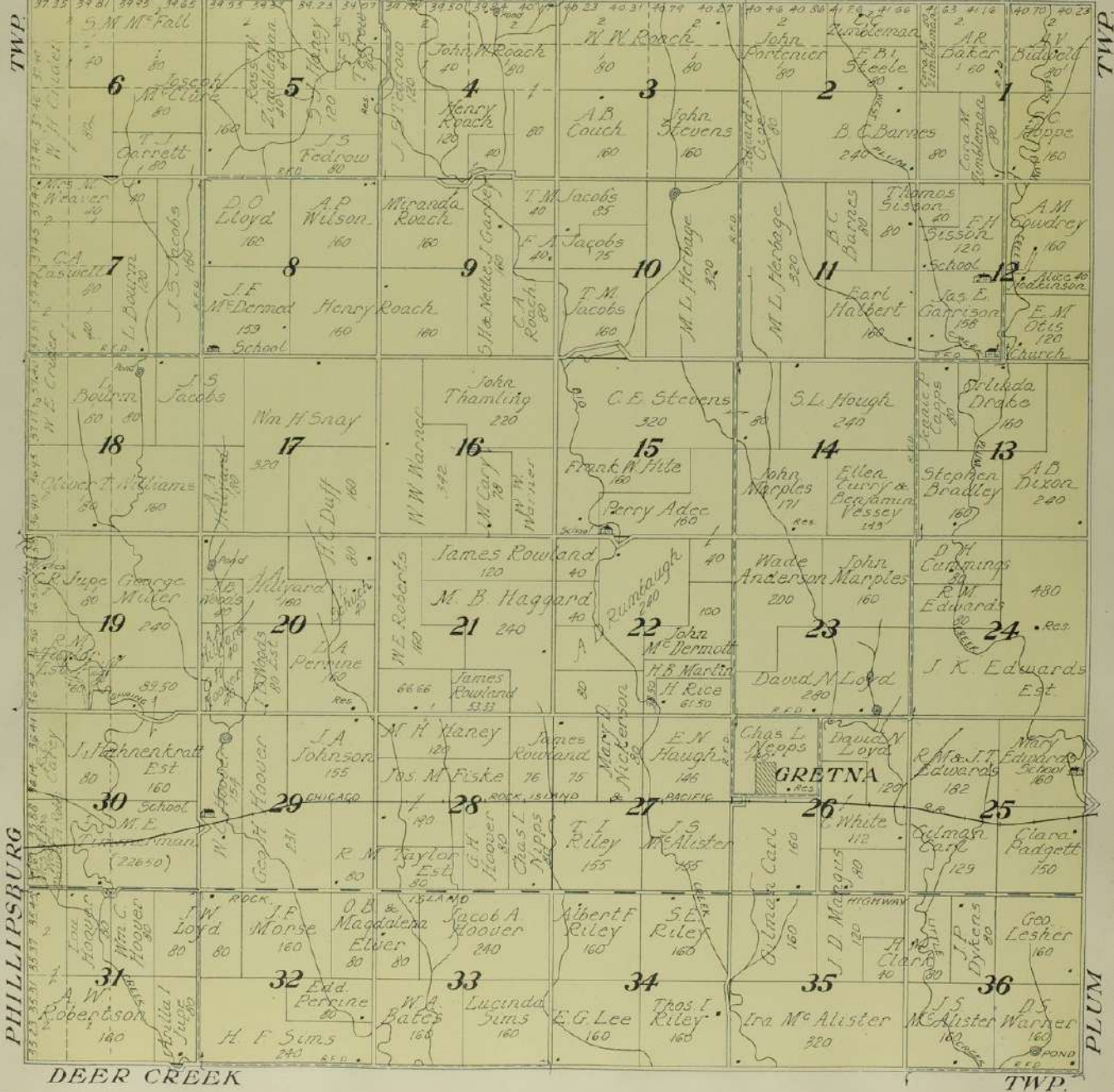
MAP OF
ARCADE
TOWNSHIP

Scale 2 inches to 1 mile

Township 3 South, Range 17 West of the 6th P. M.

GREENWOOD

TWP.



DEER CREEK

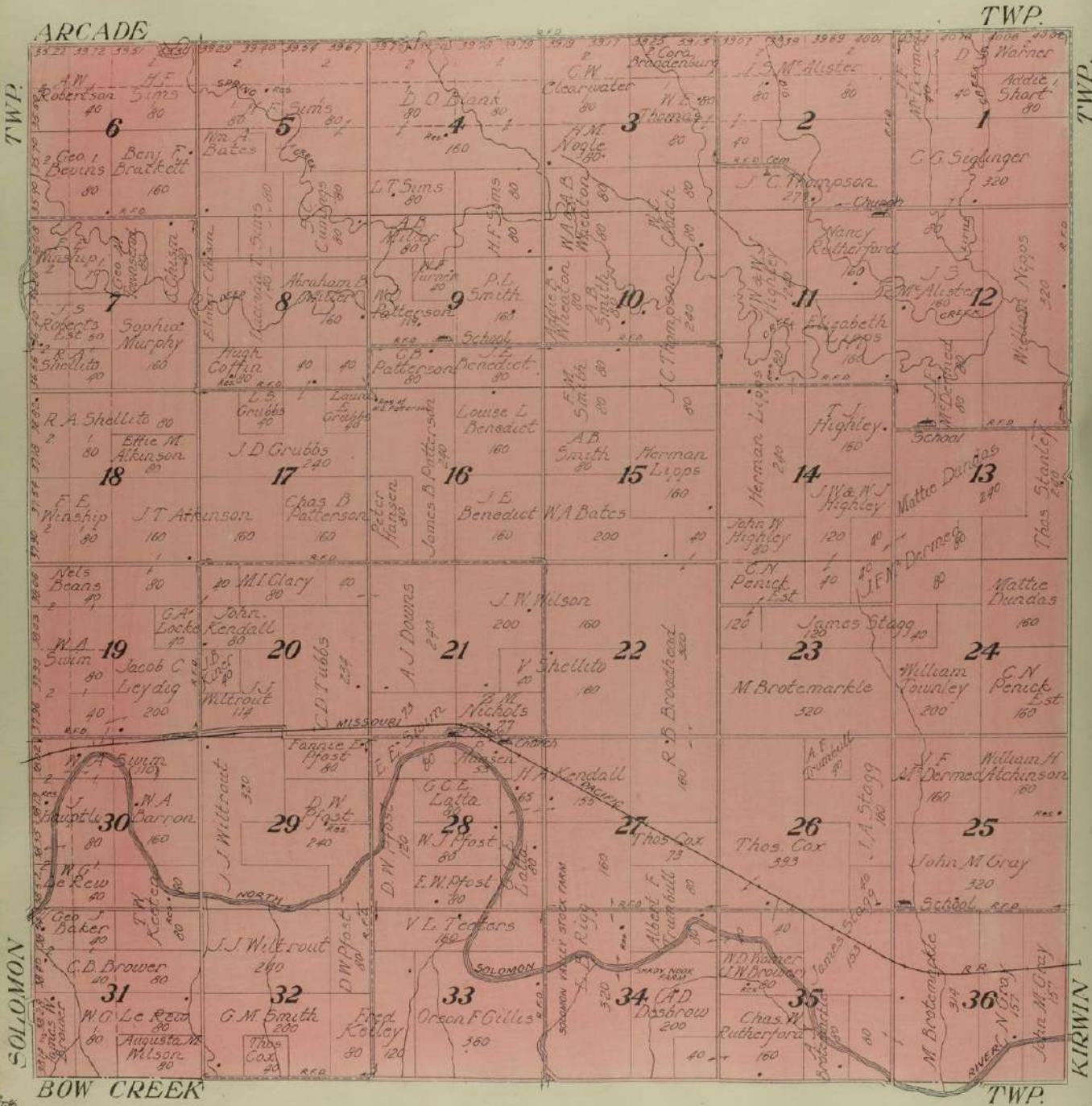
TWP.

PHILLIPSBURG

PLUM

MAP OF
DEER CREEK
 TOWNSHIP
 Scale 2 inches to 1 mile

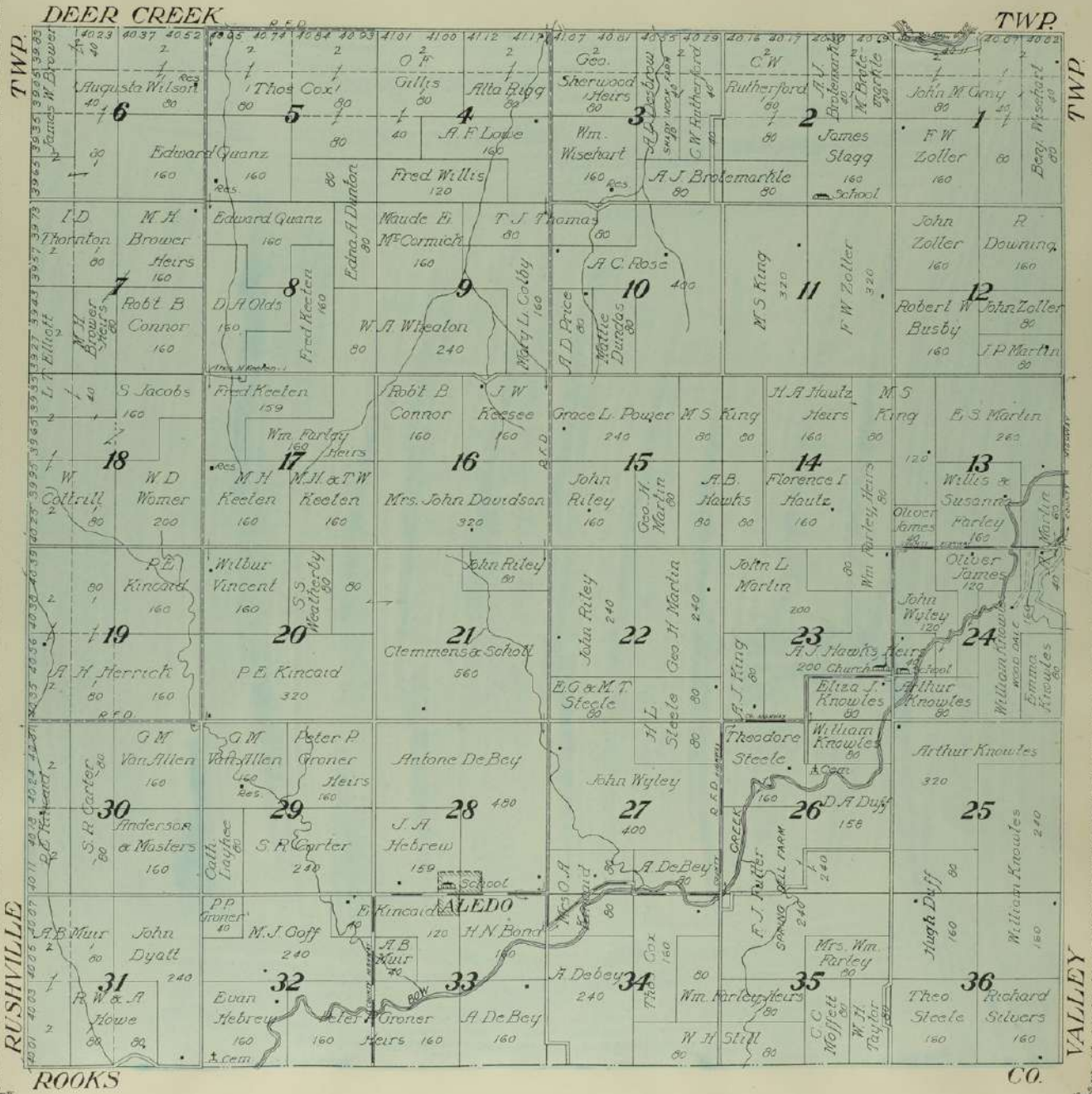
Township 4 South, Range 17 West of the 6th P. M.



MAP OF
BOW CREEK
TOWNSHIP

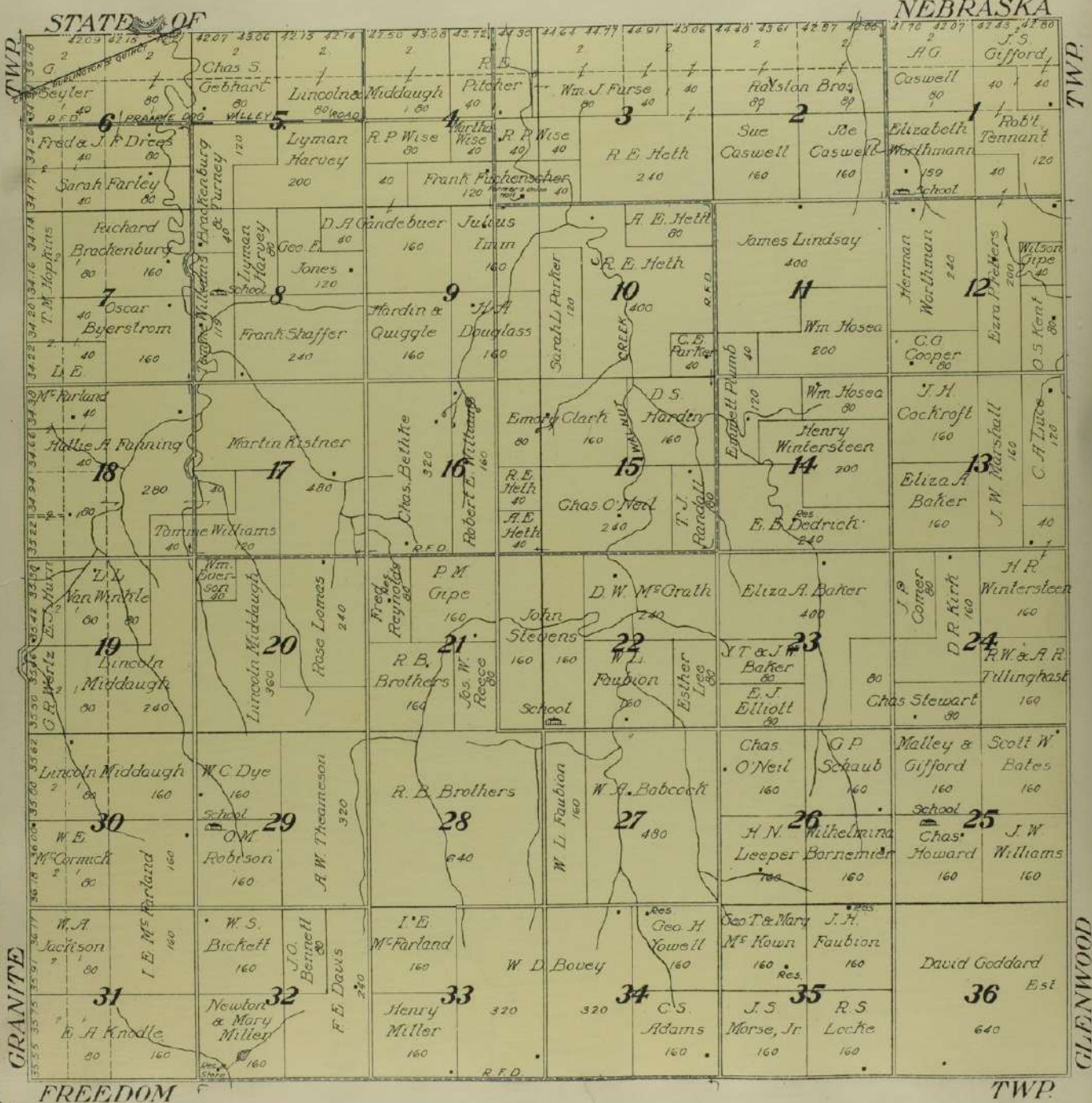
Scale 2 inches to 1 mile

Township 5 South, Range 17 West of the 6th P. M.



MAP OF
WALNUT
 TOWNSHIP
 Scale 2 inches to 1 mile

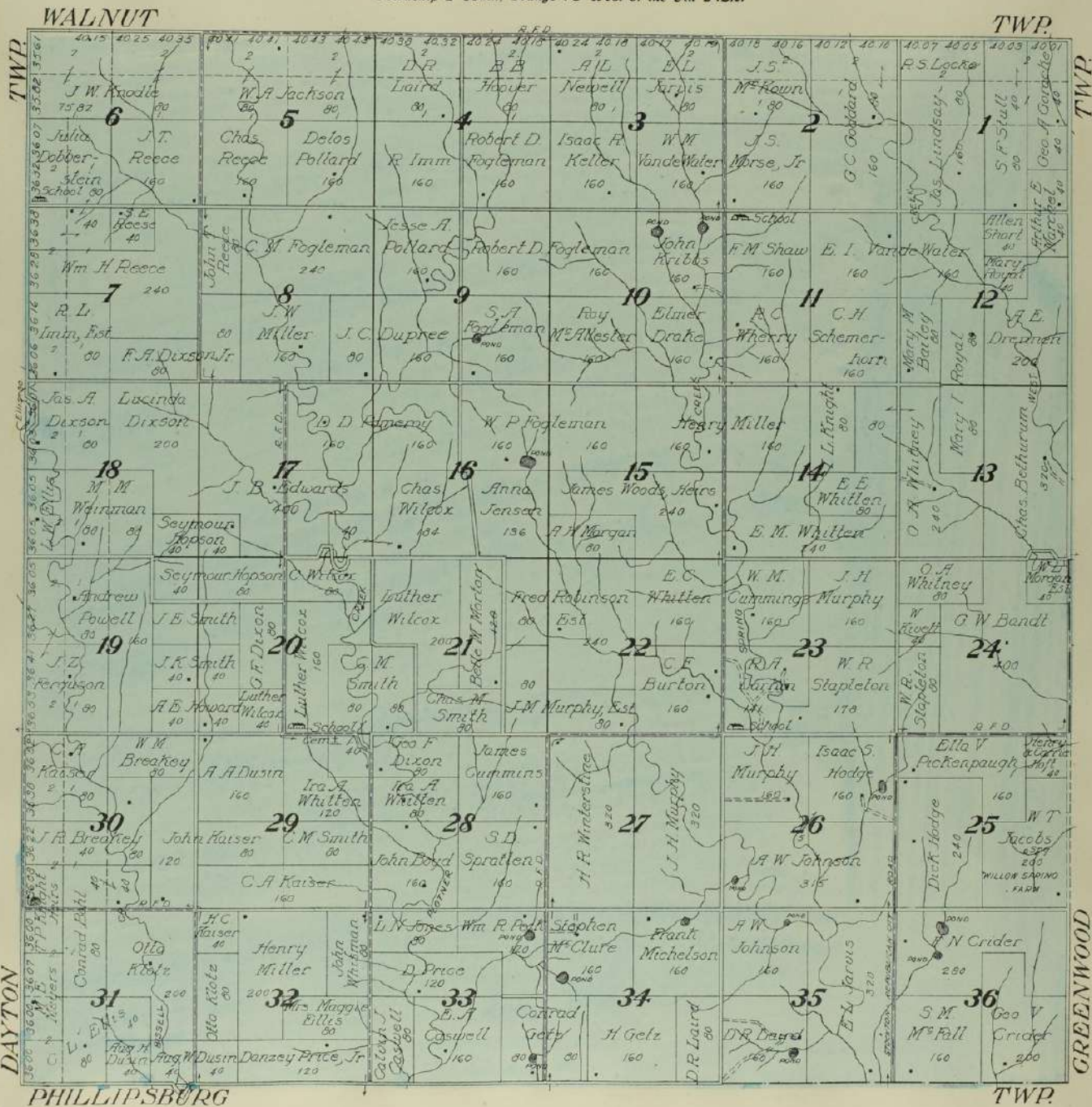
Township 1 South, Range 18 West of the 6th P. M.

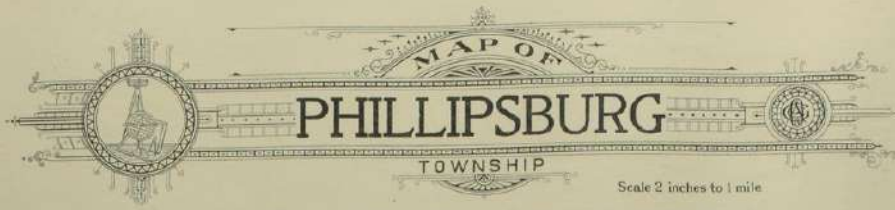


MAP OF
FREEDOM
TOWNSHIP

Scale 2 inches to 1 mile

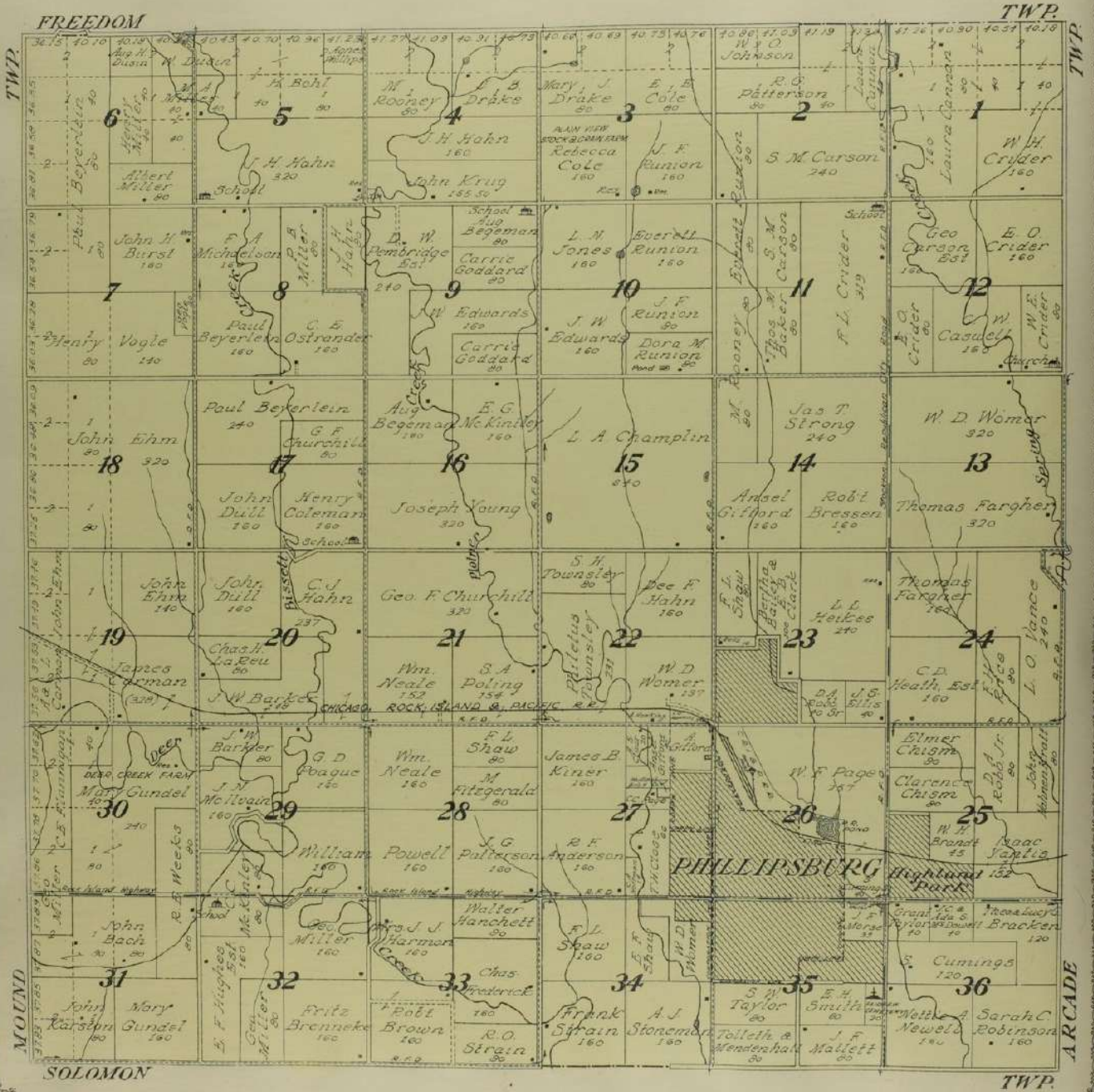
Township 2 South, Range 18 West of the 6th P.M.





MAP OF
PHILLIPSBURG
 TOWNSHIP
 Scale 2 inches to 1 mile

Township 3 South, Range 18 West of the 6th P. M.

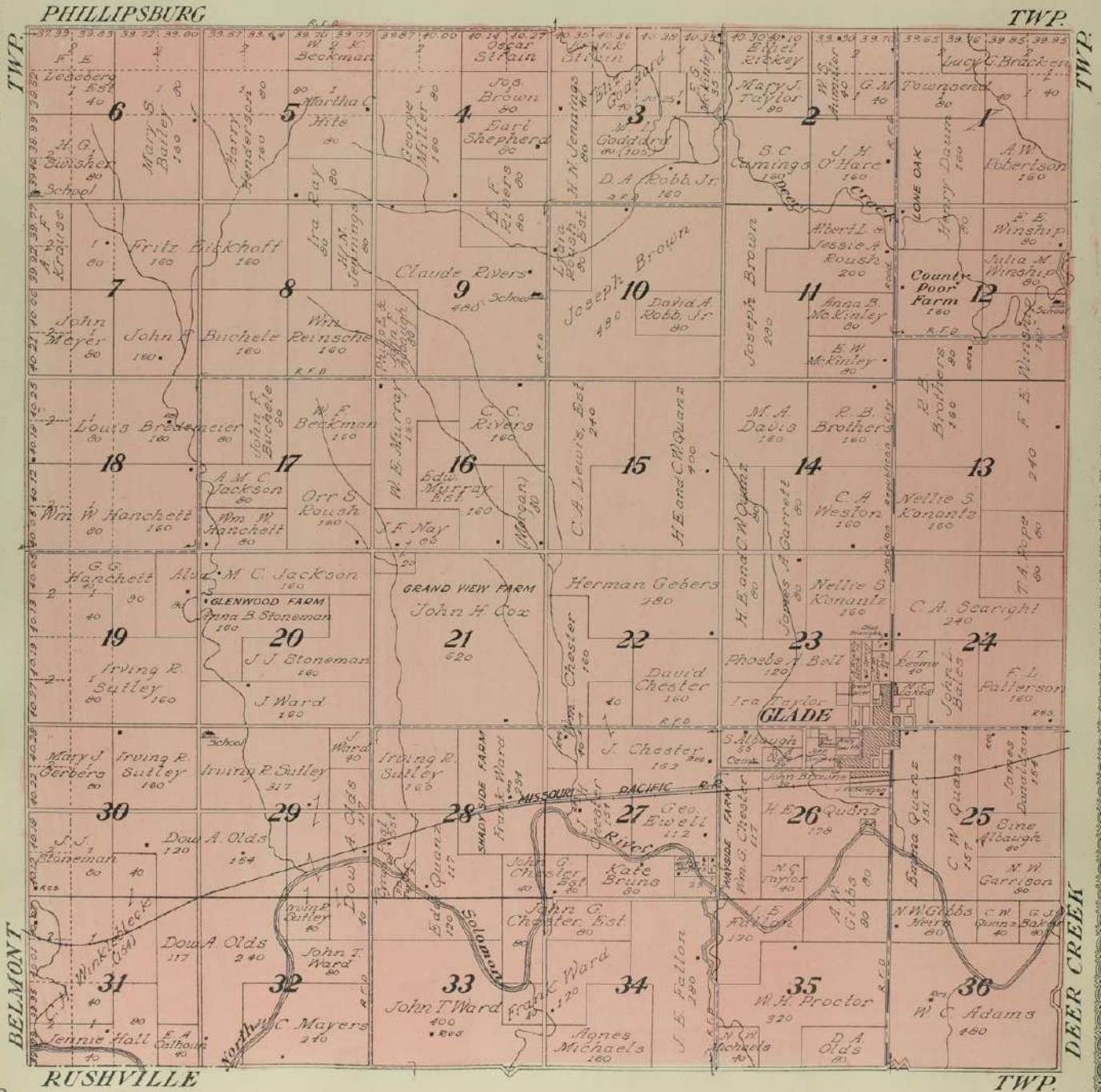


KANSAS STATE HISTORICAL SOCIETY

MAP OF
SOLOMON
TOWNSHIP

Scale 2 inches to 1 mile

Township 4 South, Range 18 West of the 6th P. M.



KANEAS STATE HISTORICAL SOCIETY



MAP OF
RUSHVILLE
 TOWNSHIP
 Scale 2 inches to 1 mile

Township 5 South, Range 18 West of the 6th P. M.

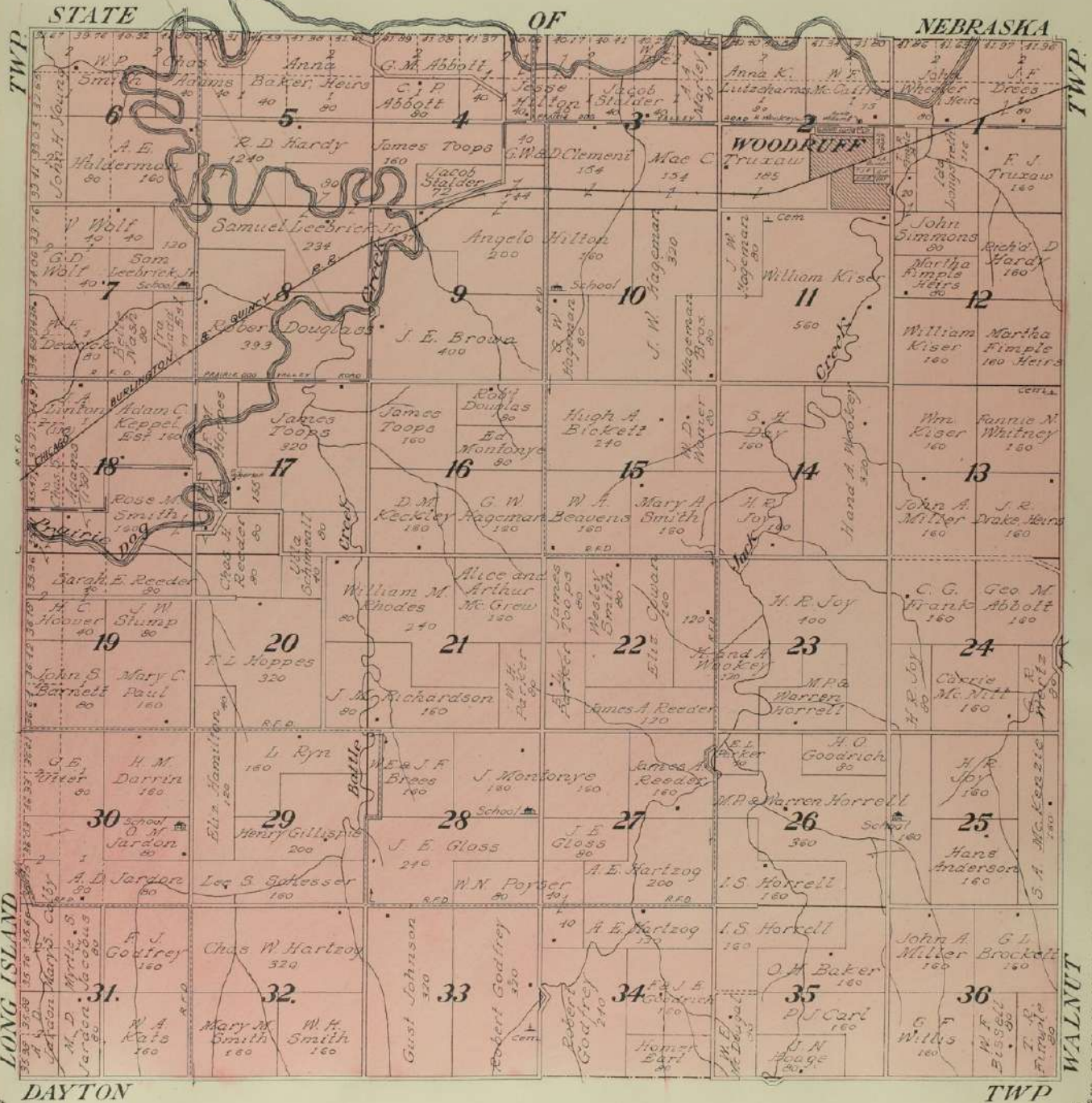


Battles fought doubleless
by 17th Mass. 710th Cav.
on Battle Creek
Somewhere

MAP OF GRANITE TOWNSHIP

Scale 2 inches to 1 mile

Township 1 South, Range 19 West of the 6th P. M.



DAYTON

TWP

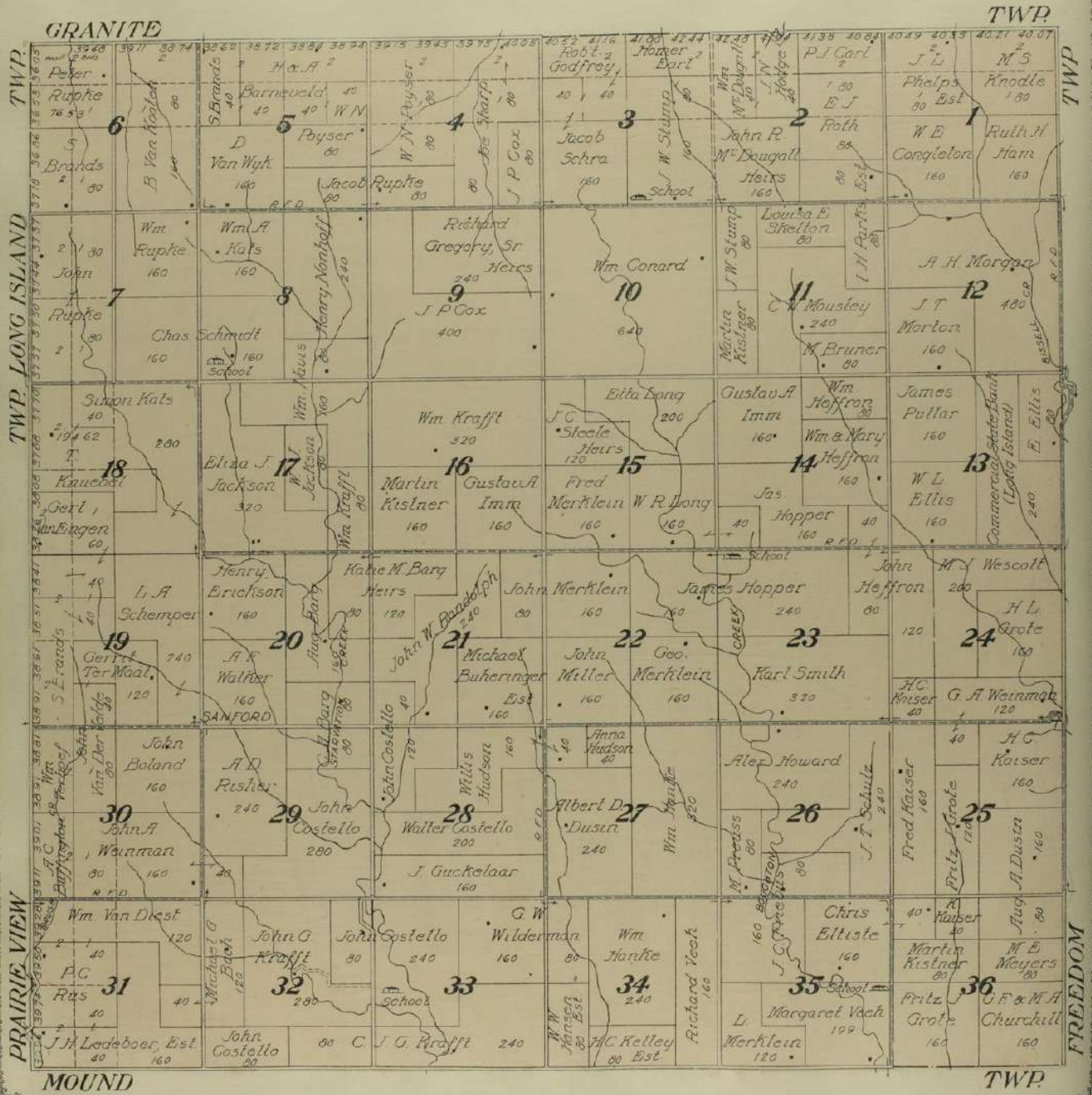
LONG ISLAND

WALNUT



MAP OF
DAYTON
 TOWNSHIP
 Scale 2 inches to 1 mile

Township 2 South, Range 19 West of the 6th P.M.

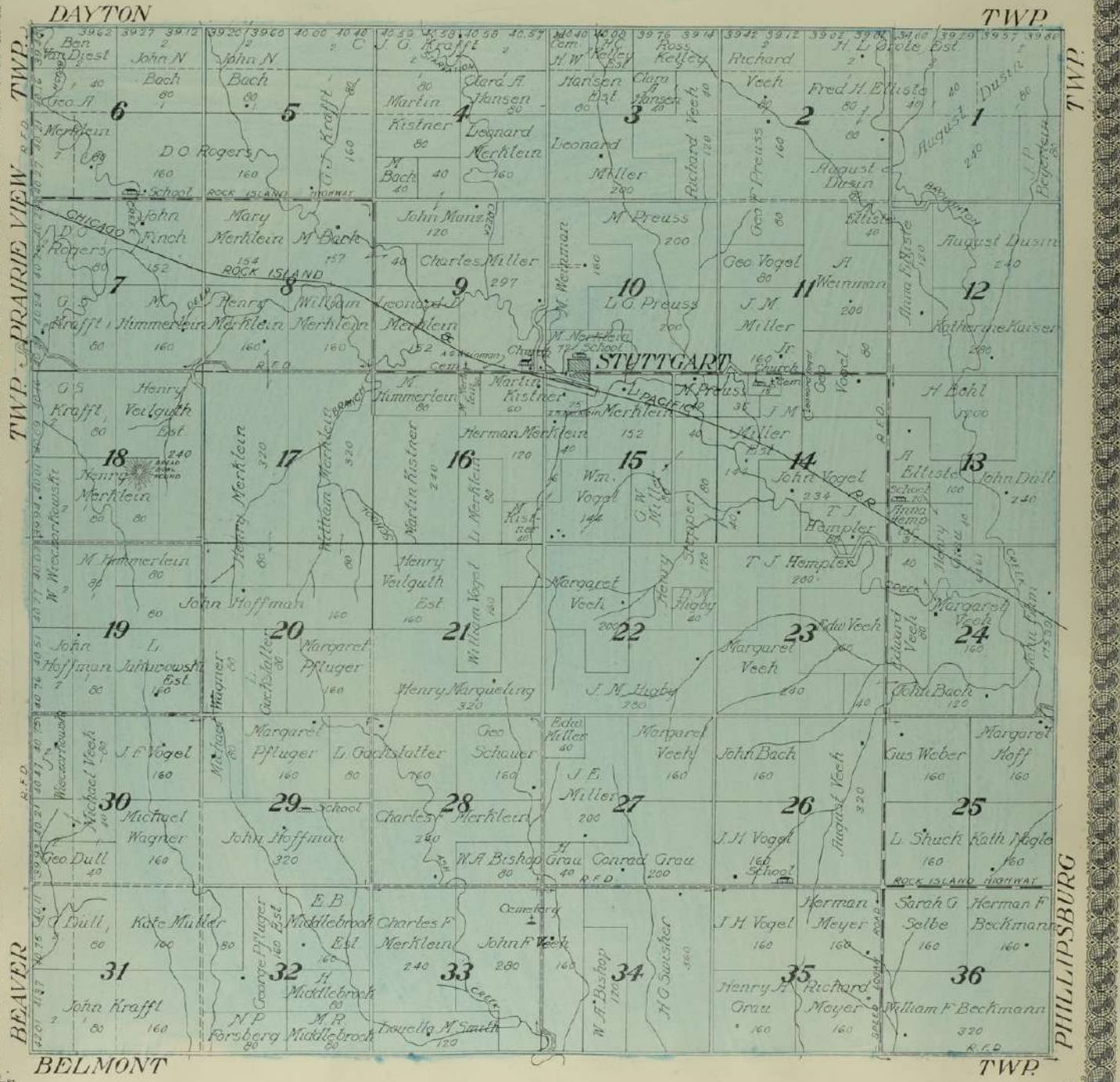


Read Bond Mound, Sec. 13. is double the mound mentioned by surveyor in Old Champ. June 26, 1859, an monument found there, on Leav. + Peck's Peak Exp. Co. Road.

MAP OF
MOUND
TOWNSHIP

Scale 2 inches to 1 mile

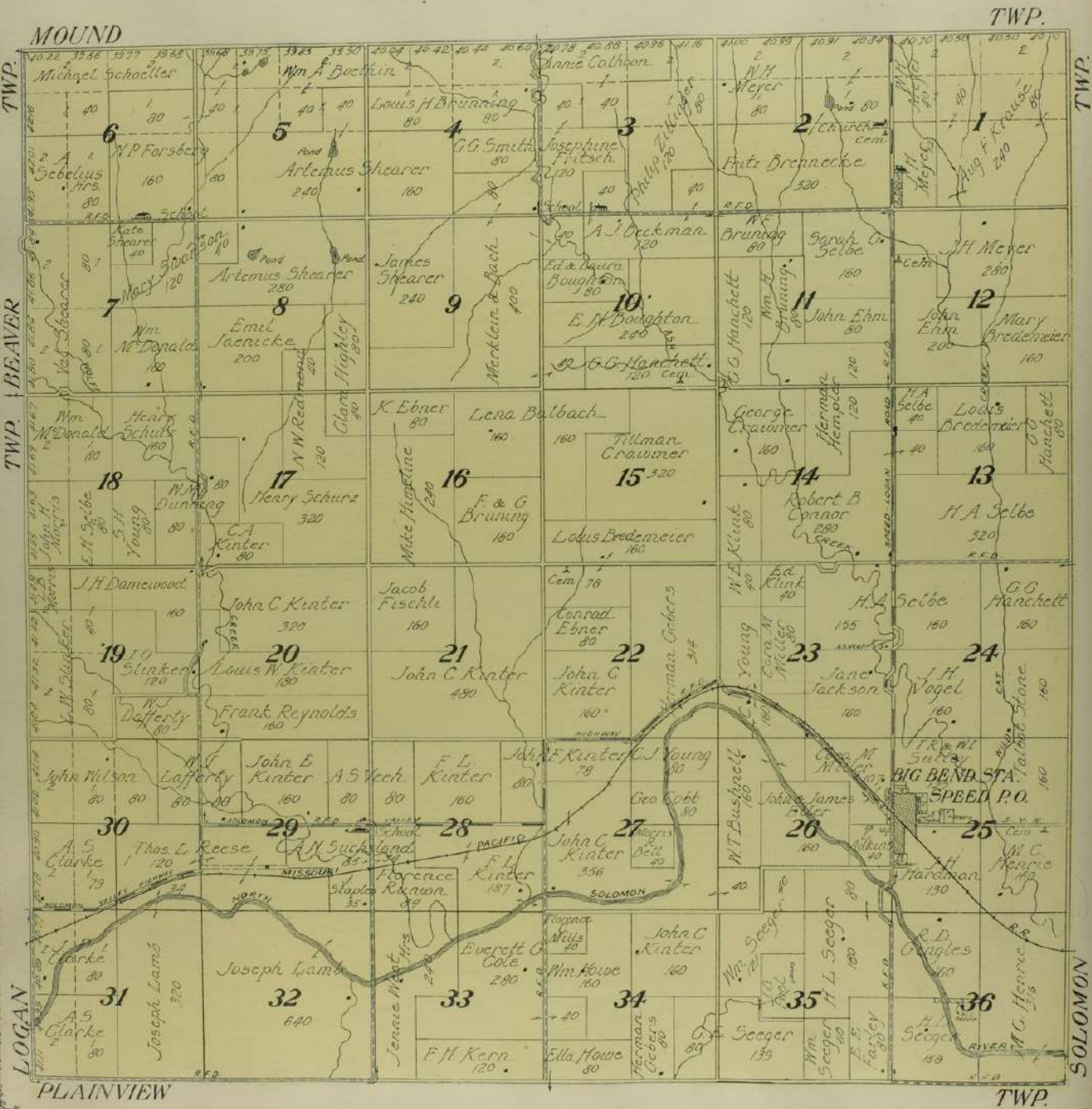
Township 5 South, Range 19 West of the 6th P. M.





MAP OF
BELMONT
 TOWNSHIP
 Scale 2 inches to 1 mile

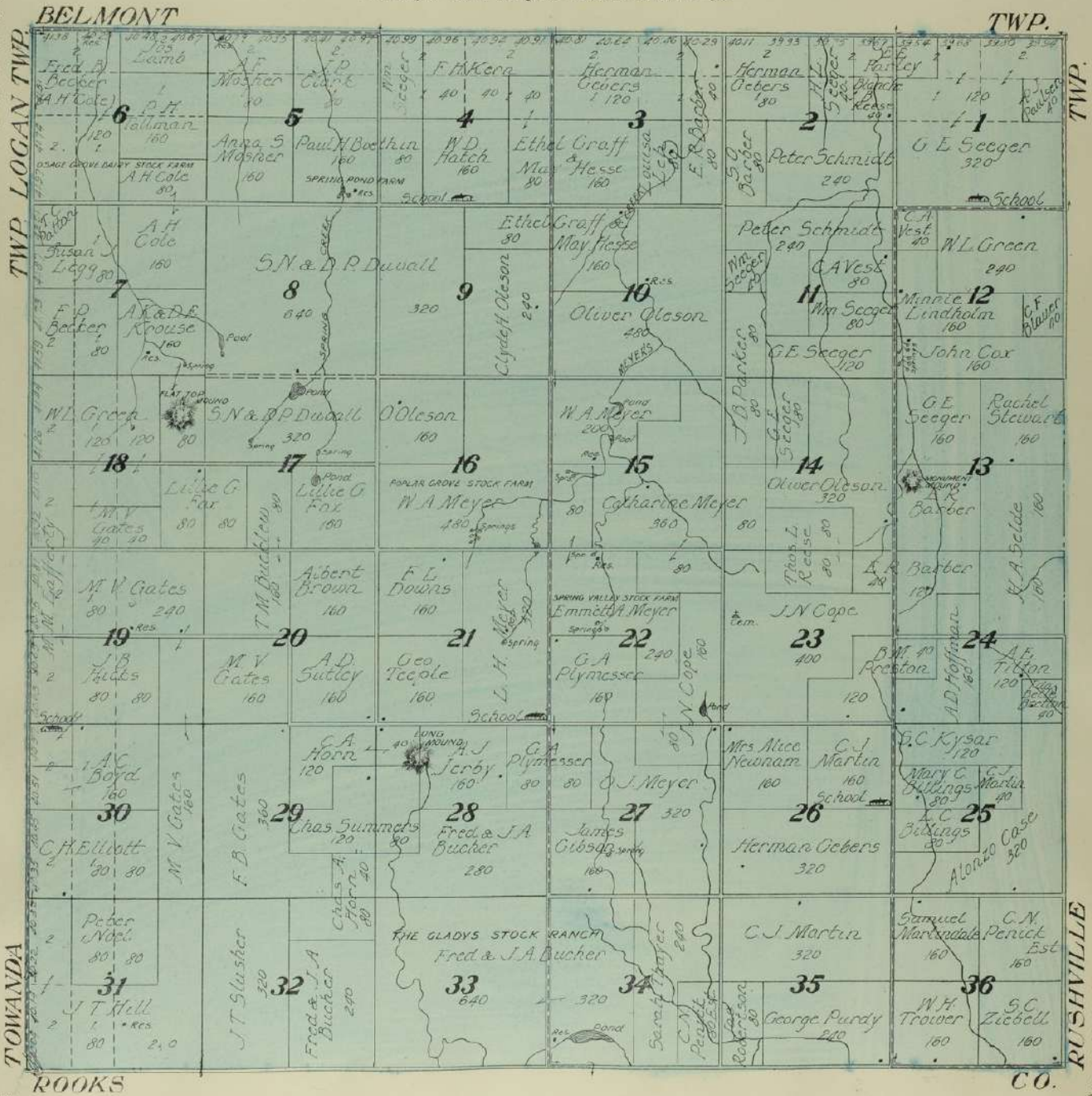
Township 4 South, Range 19 West of the 6th P. M.





MAP OF
PLAINVIEW
 TOWNSHIP
 Scale 2 inches to 1 mile

Township 5 South, Range 19 West of the 6th P. M.



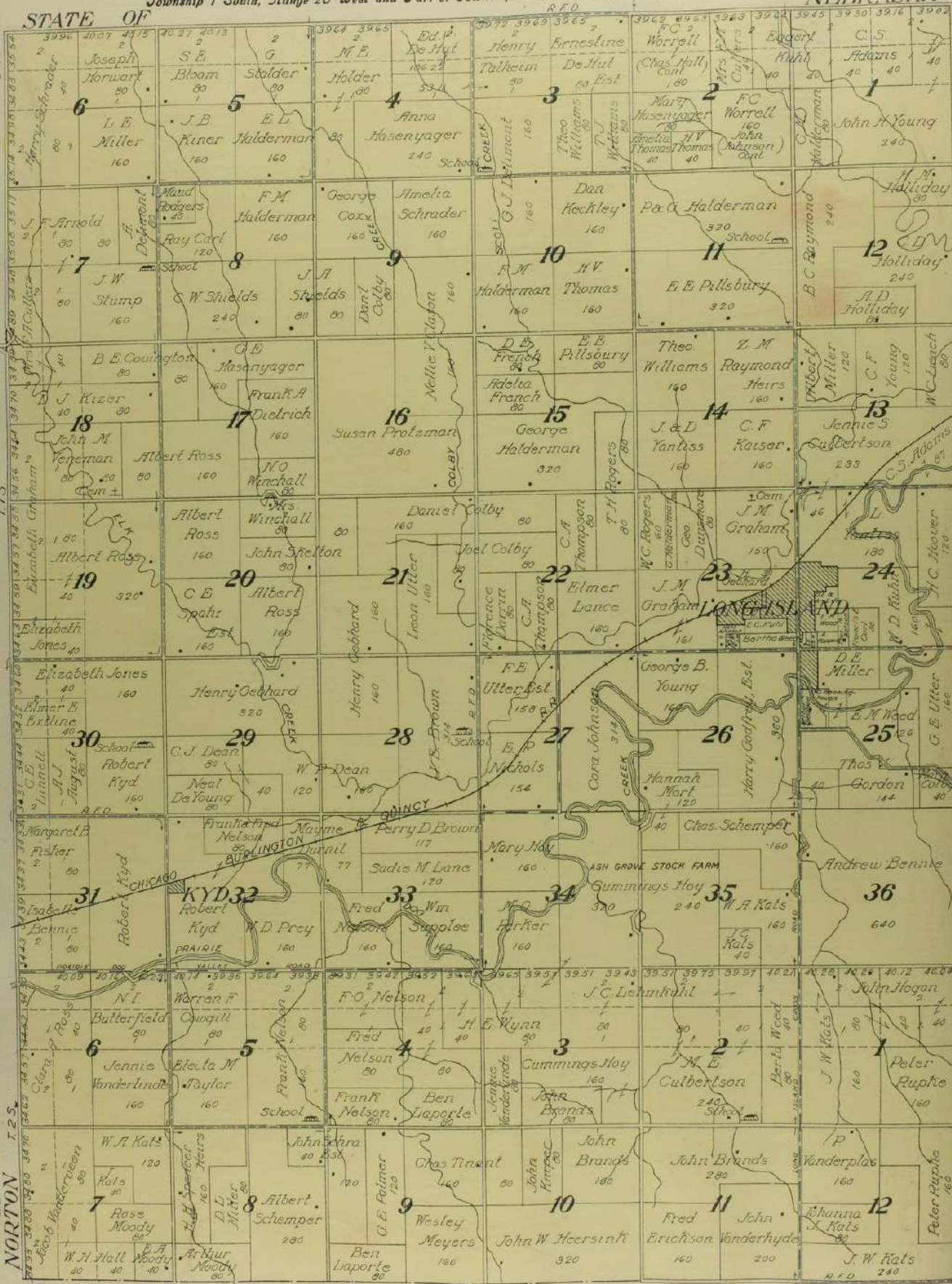
MAP OF LONG ISLAND TOWNSHIP

Scale 2 inches to 1 mile

Township 1 South, Range 20 West and Part of Township 2 South, Range 20 West of the 6th P.M.

NEBRASKA

STATE OF



C.O.

TWP.

TWP. GRANITE

DAYTON TWP.

NORTON

PRAIRIE VIEW

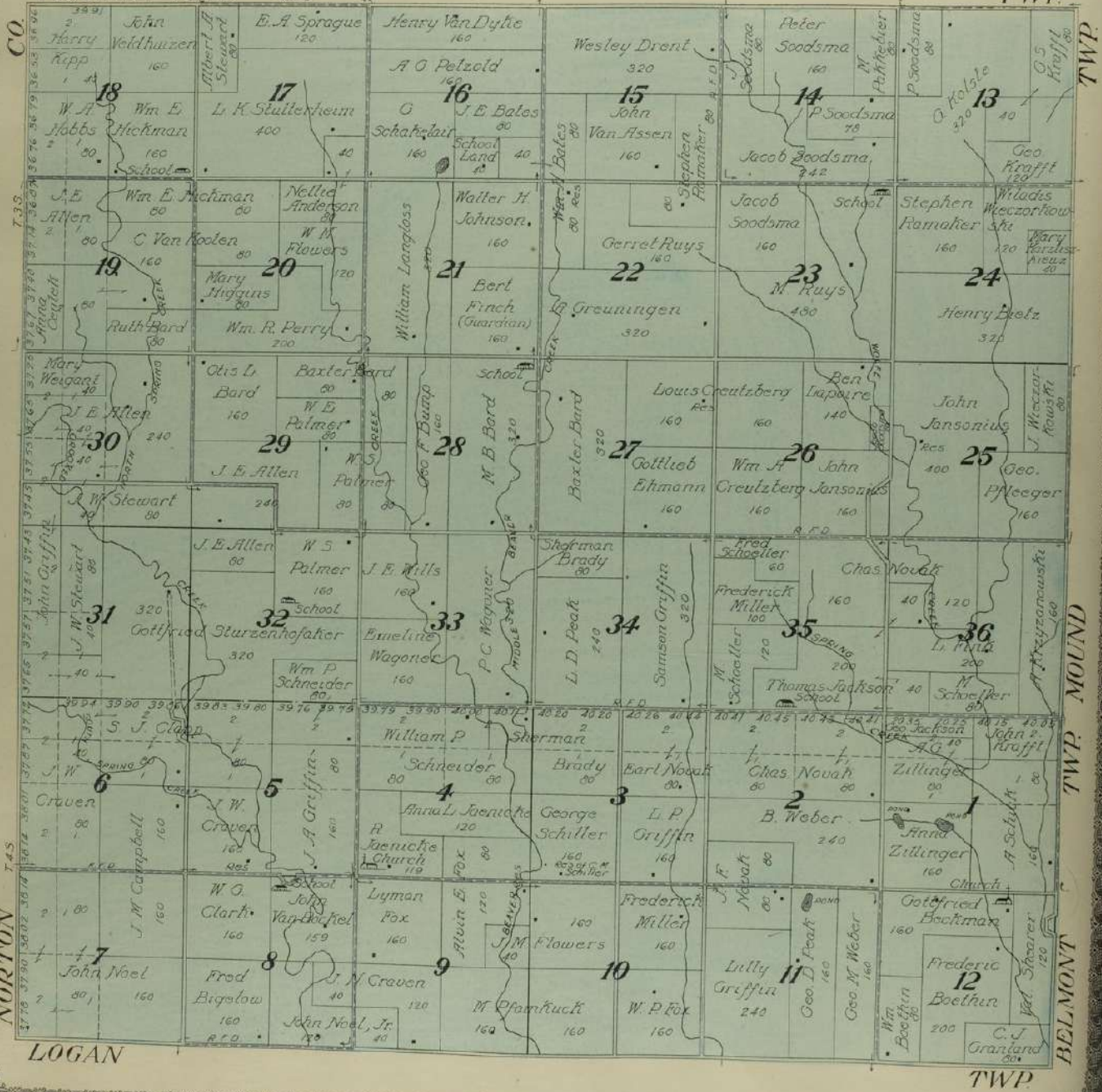
TWP.

MAP OF
BEAVER
 TOWNSHIP
 Scale 2 inches to 1 mile

Part of Townships 3 and 4 South, Range 20 West of the 6th P.M.

PRAIRIE VIEW

TWP



NORTON

LOGAN

TWP MOUND

BELMONT

TWP

MAP OF
TOWANDA
 TOWNSHIP
 Scale 2 inches to 1 mile

Part of Township 5 South, Range 20 West of the 6th P.M.

