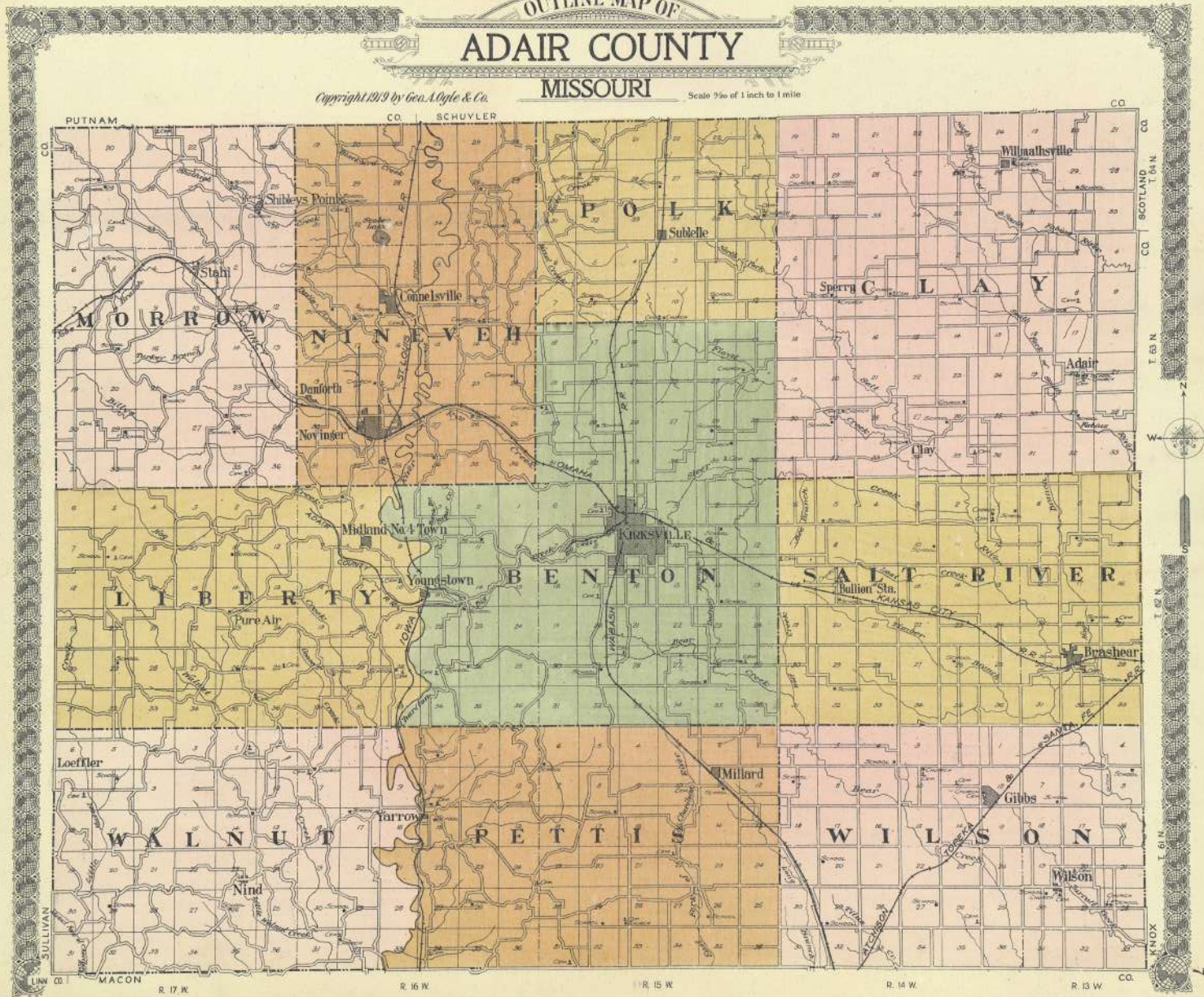


OUTLINE MAP OF
ADAIR COUNTY

MISSOURI

Copyright 1919 by Geo. A. Ogle & Co.

Scale 2/3 of 1 inch to 1 mile



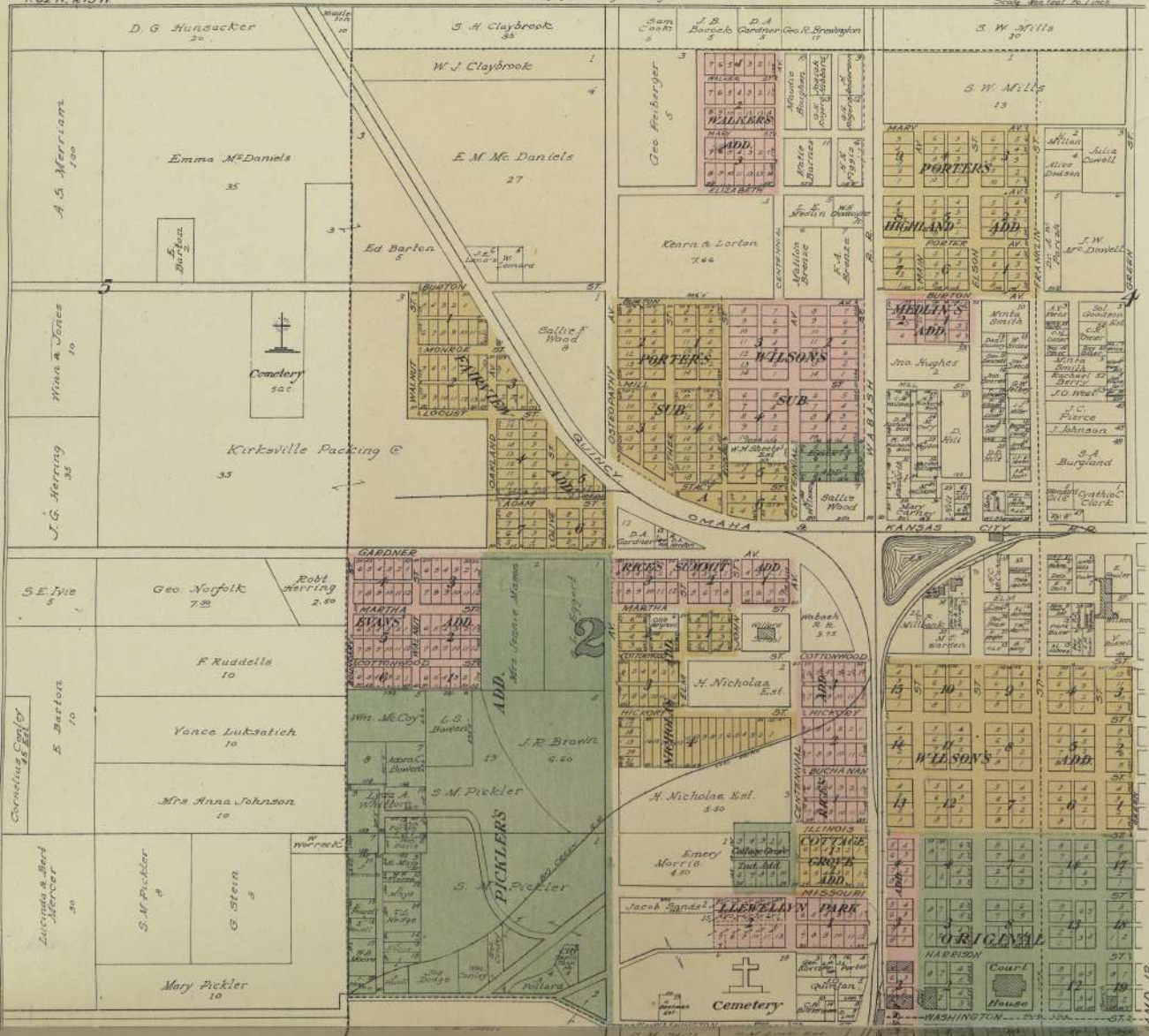
WEST PART OF KIRKSVILLE

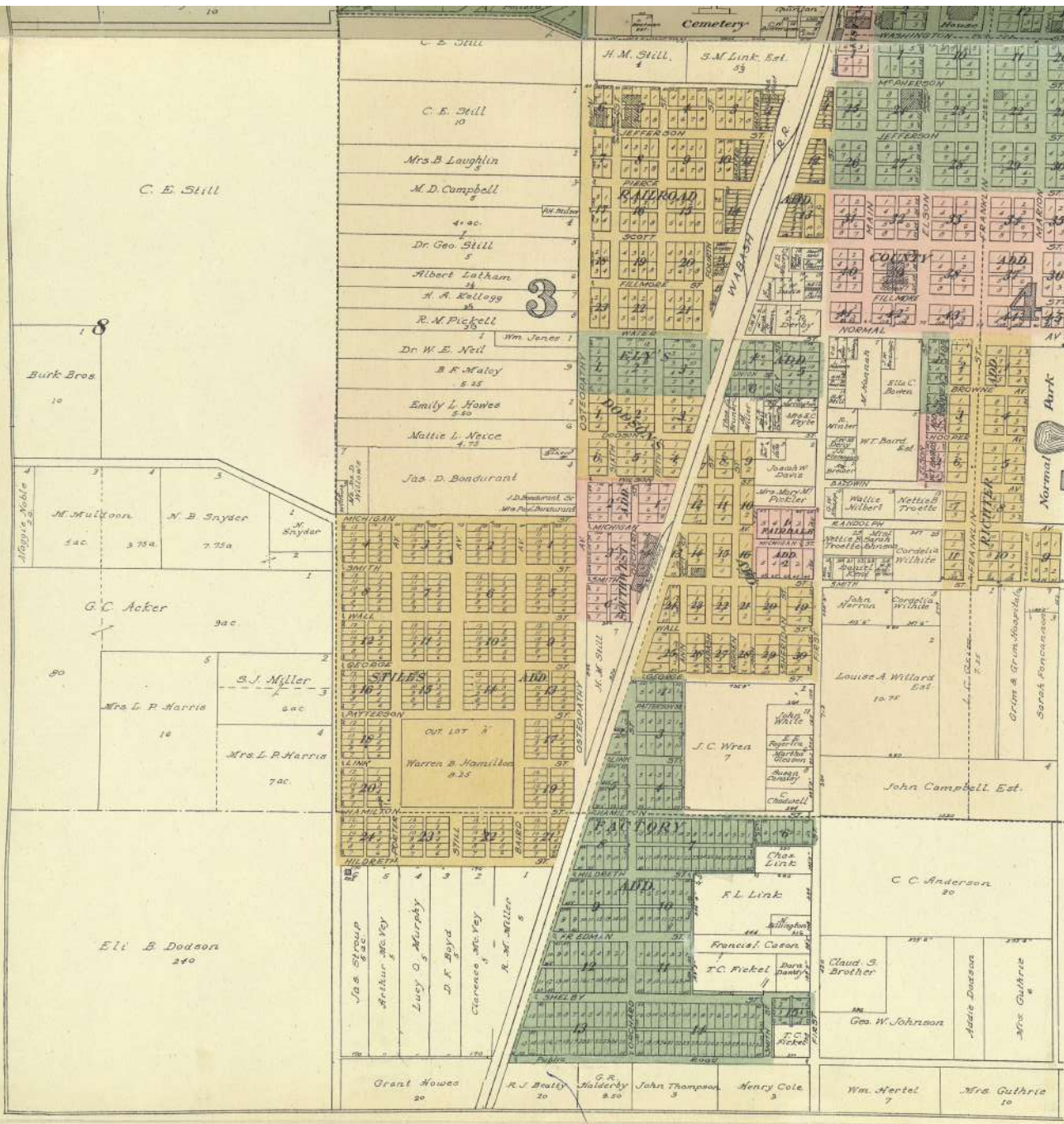
COUNTY SEAT OF ADAIR CO., MISSOURI

Note: Large shaded figures denote Ward Numbers
Copyright 1917 by Geo. A. Dyke & Co.

T. 62 N. R. 15 W.

Scale: One Inch = 100 Feet





FOR EAST PART SEE PAGES 124 AND 125

BRASHEAR

Scale 300 feet = 1 inch

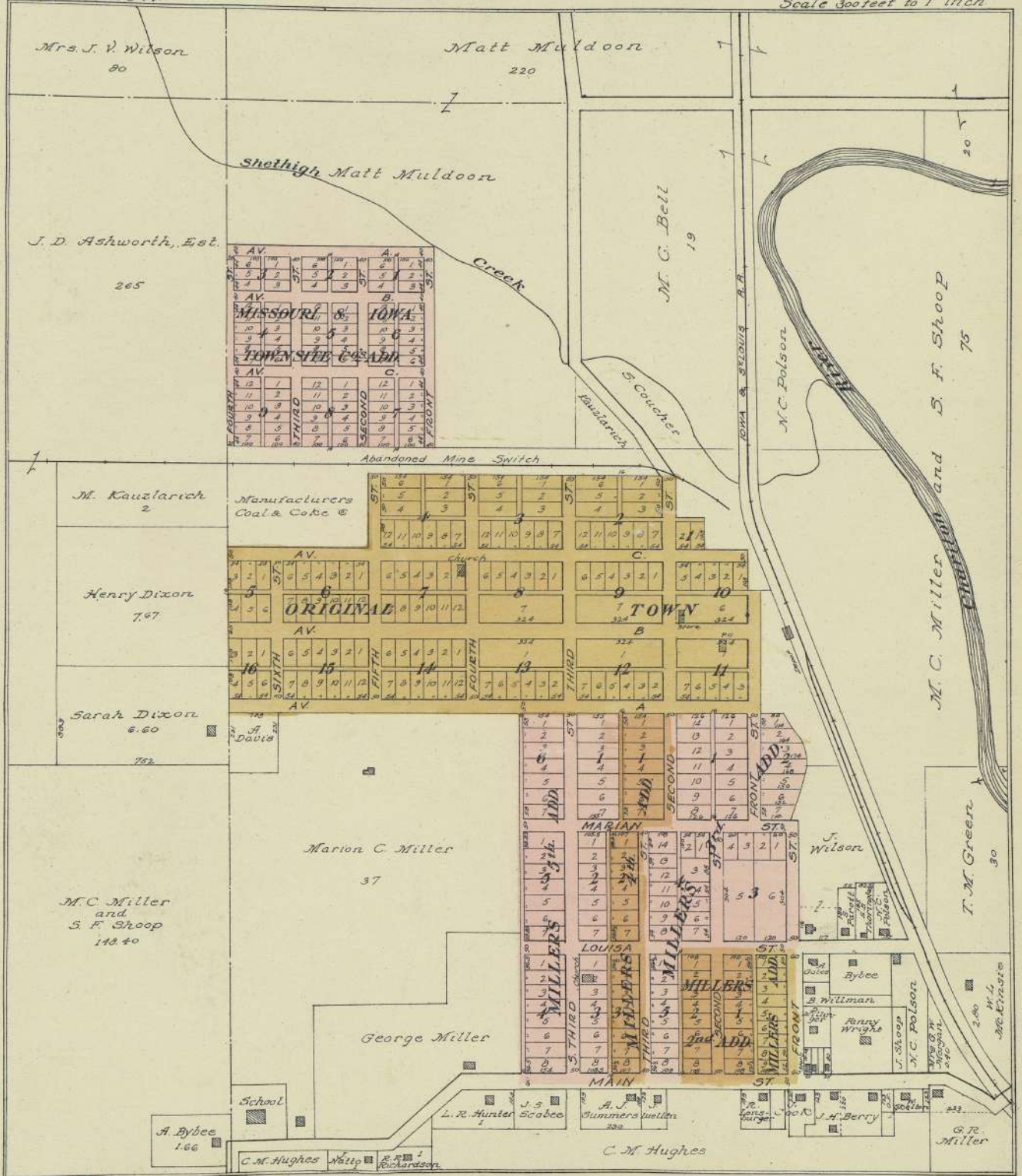
T. 62 N. R. 13 W.



CONNELSVILLE

T. 63 N., R. 16 W.

Scale 300 feet to 1 inch



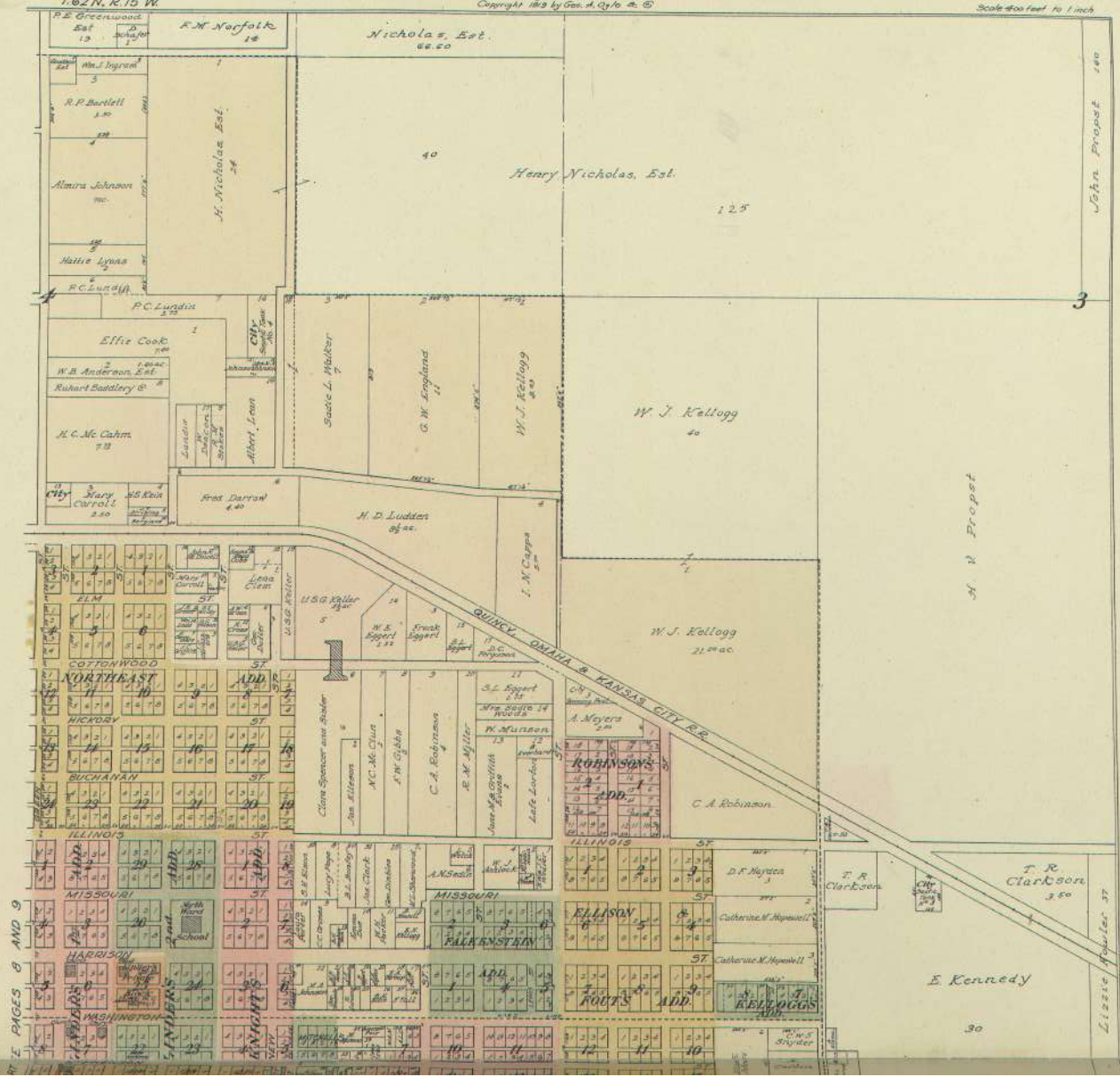
EAST PART OF KIRKSVILLE

COUNTY SEAT OF ADAIR CO., MISSOURI

Note: Large shaded figures denote Ward Numbers
Copyright 1893 by Geo. A. Cyle & Co.

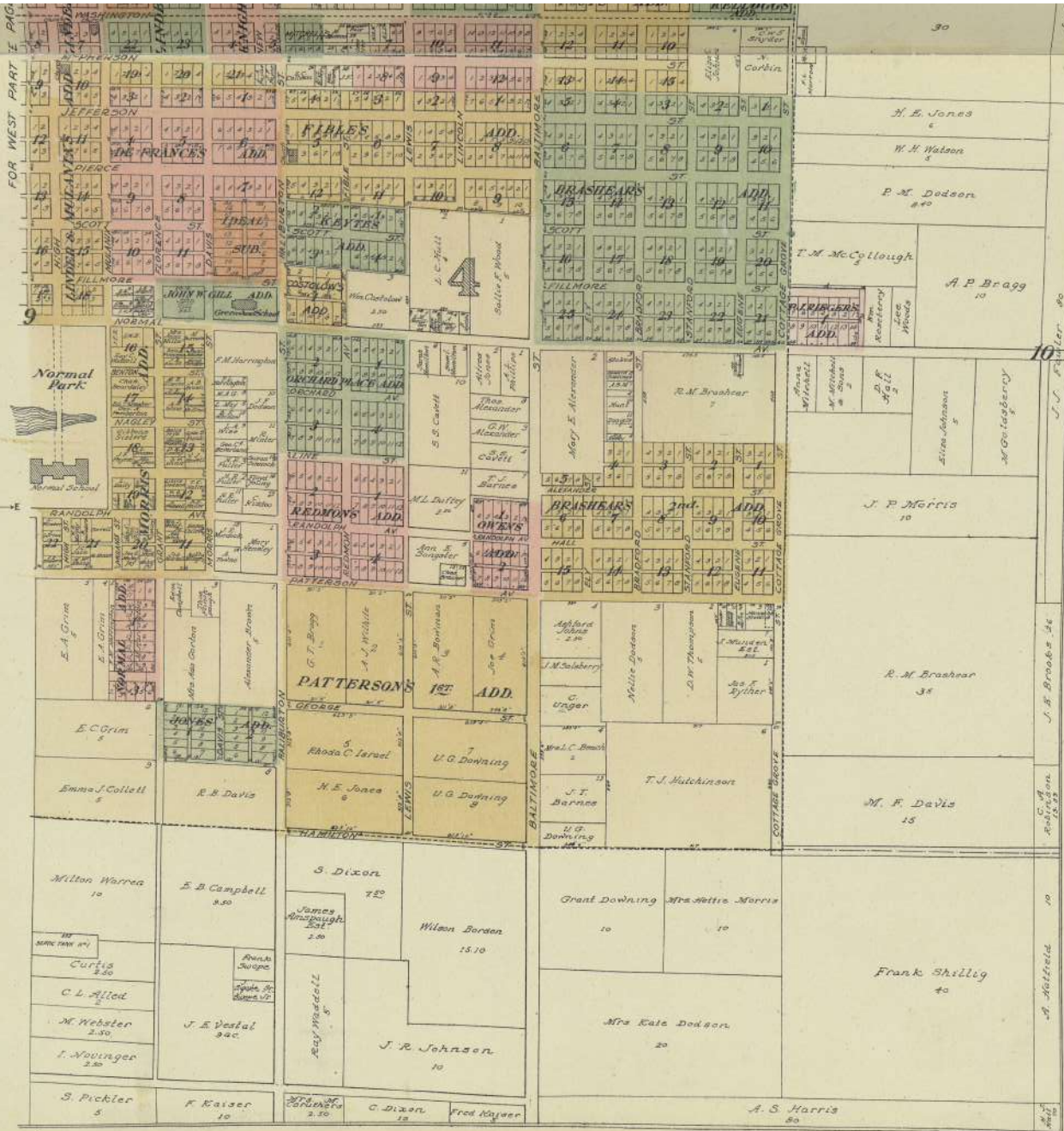
Scale 400 feet to 1 inch

T. 62 N. R. 15 W.



SEE PAGES 8 AND 9

FOR WEST PART I PAGE



10

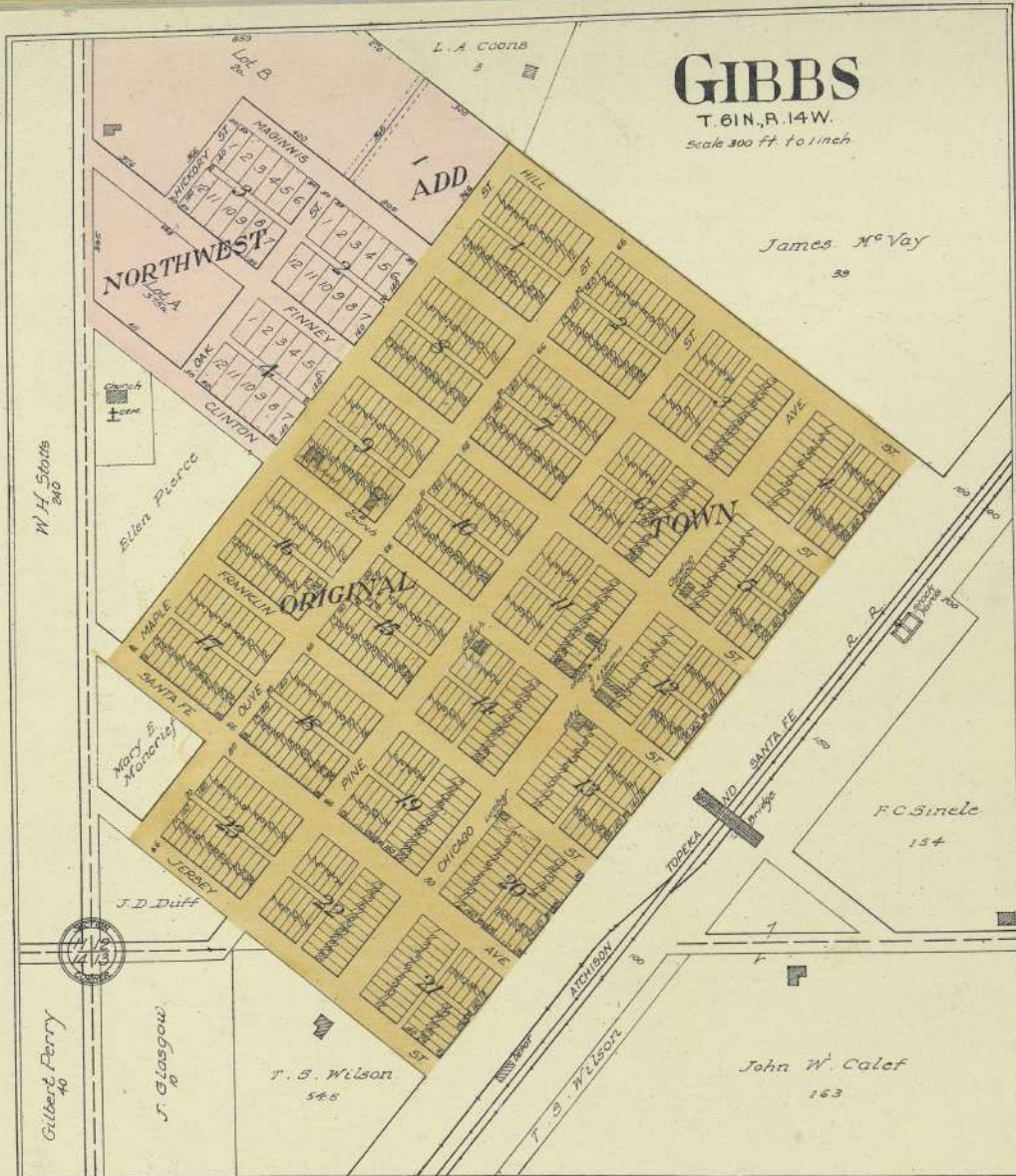
J. H. Brooks 34

A. Holtfield 10

13

GIBBS

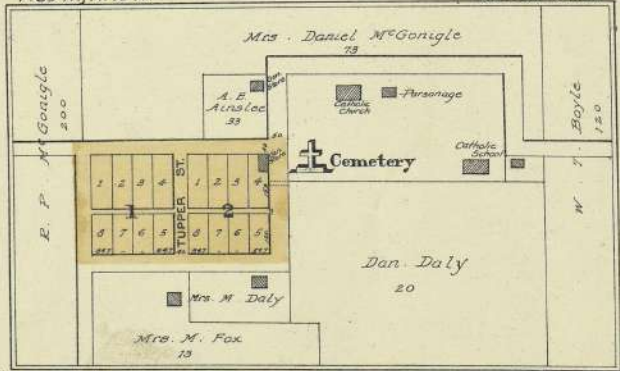
T. 61 N., R. 14 W.
Scale 300 ft. to 1 inch



ADAIR

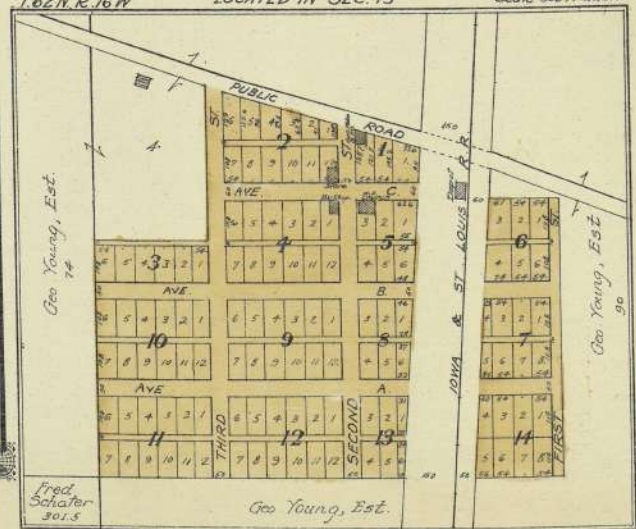
LOCATED IN SECTION 20

T. 63 N., R. 13 W. Scale 300 ft. to 1 inch



YOUNGSTOWN

T. 62 N., R. 16 W. LOCATED IN SEC. 15 Scale 300 ft. to 1 inch



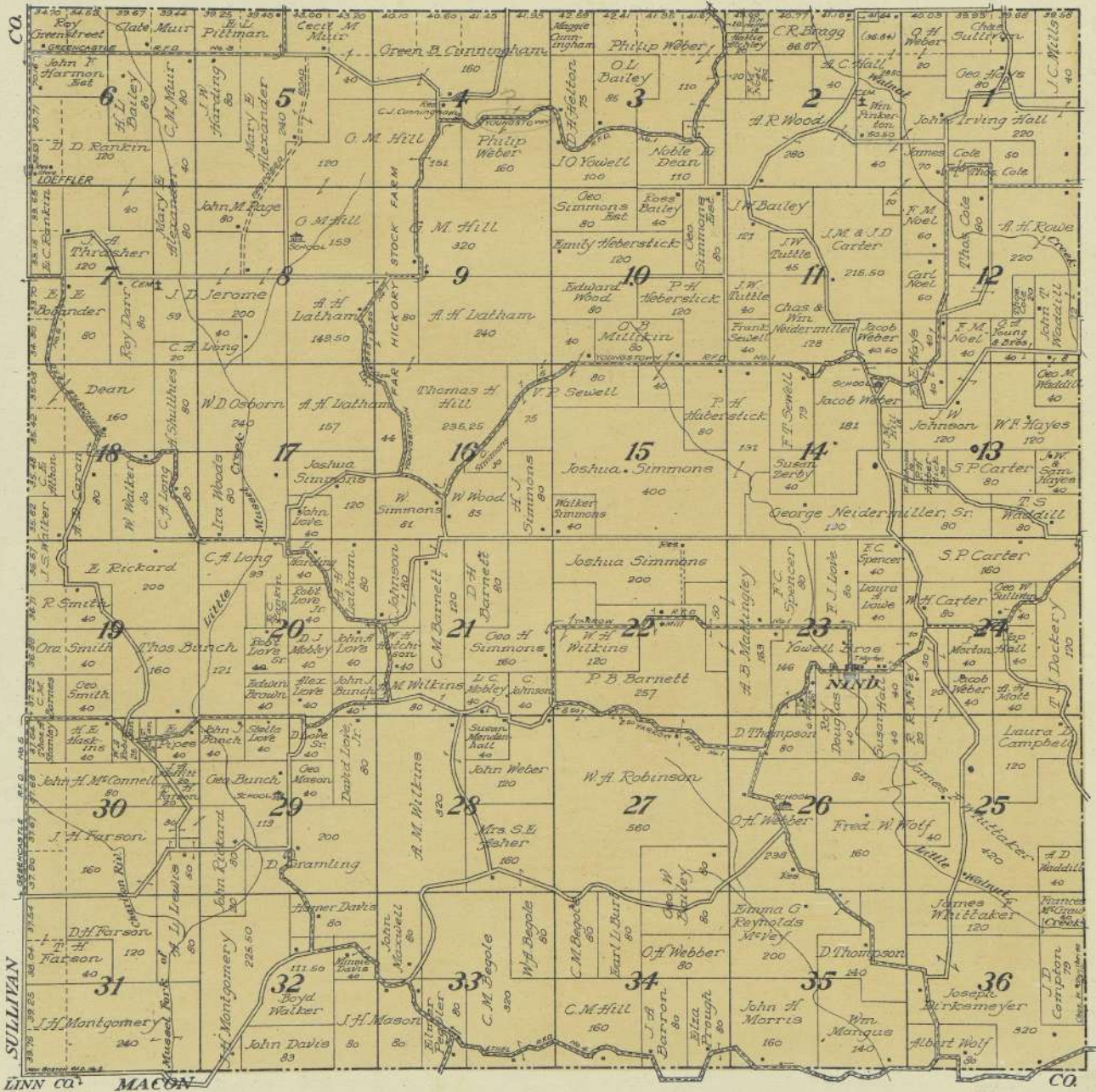


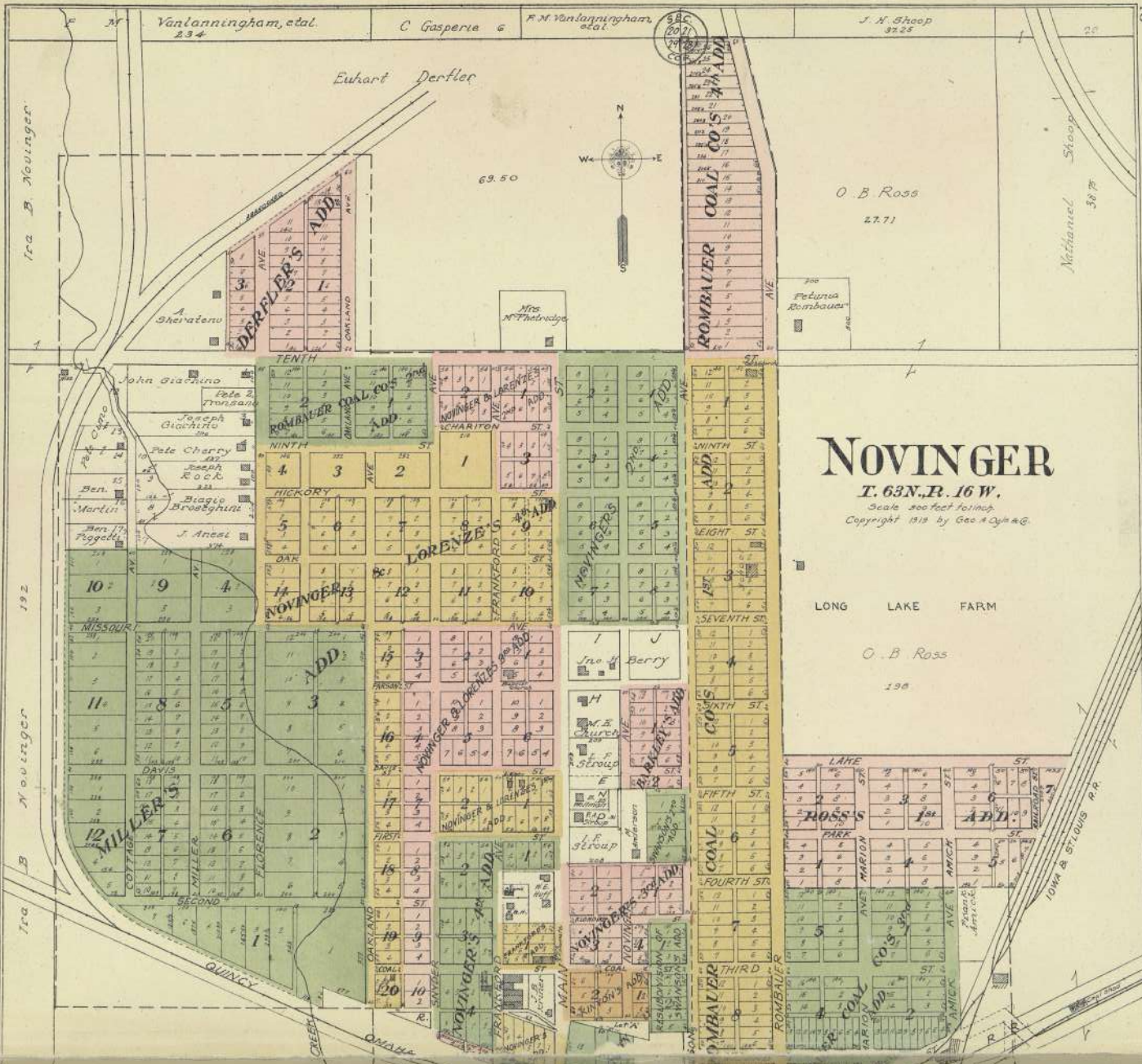
MAP OF

TOWNSHIP 61 N., RANGE 17 W.

 OF THE 5th P. M.

Scale 2 inches to 1 mile





NOVINGER
 T. 63N., R. 16W.
 Scale, 500 feet to an inch.
 Copyright 1918 by Geo. A. Ogle & Co.

LONG LAKE FARM
 O. B. Ross
 198

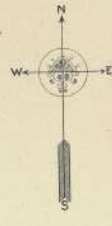
Vanlanningham, et al.
 234

C. Gasperie 6

F.M. Vanlanningham, et al.

J. H. Sheep
 3725

Euhart Derflet



69.50

O. B. Ross
 27.71

Petunia
 Rombauer

Nathaniel
 Sheep
 38.77

A. Shevatenu

Mrs.
 M. P. H. ...

John Giachino

Pete Z. ...

Joseph Giachino

Pete Cherry

Ben. ...

Ben. ...

Ben. ...

Ben. ...

Ben. ...

Ben. ...

Ben. ...

Ben. ...

Ben. ...

Ben. ...

Ben. ...

Ben. ...

Ben. ...

Ben. ...

Ben. ...

Ben. ...

Ben. ...

Ben. ...

Ben. ...

Ben. ...

Ben. ...

Ben. ...

Ben. ...

Ben. ...

Ben. ...

Ben. ...

Ben. ...

Ben. ...

Ben. ...

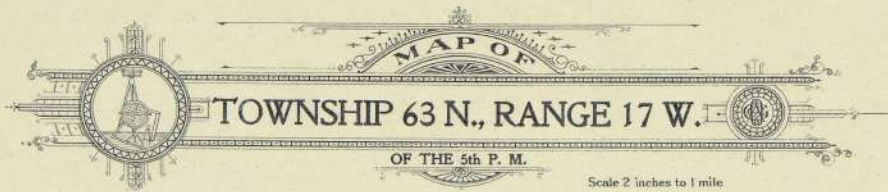
Ben. ...

Ben. ...

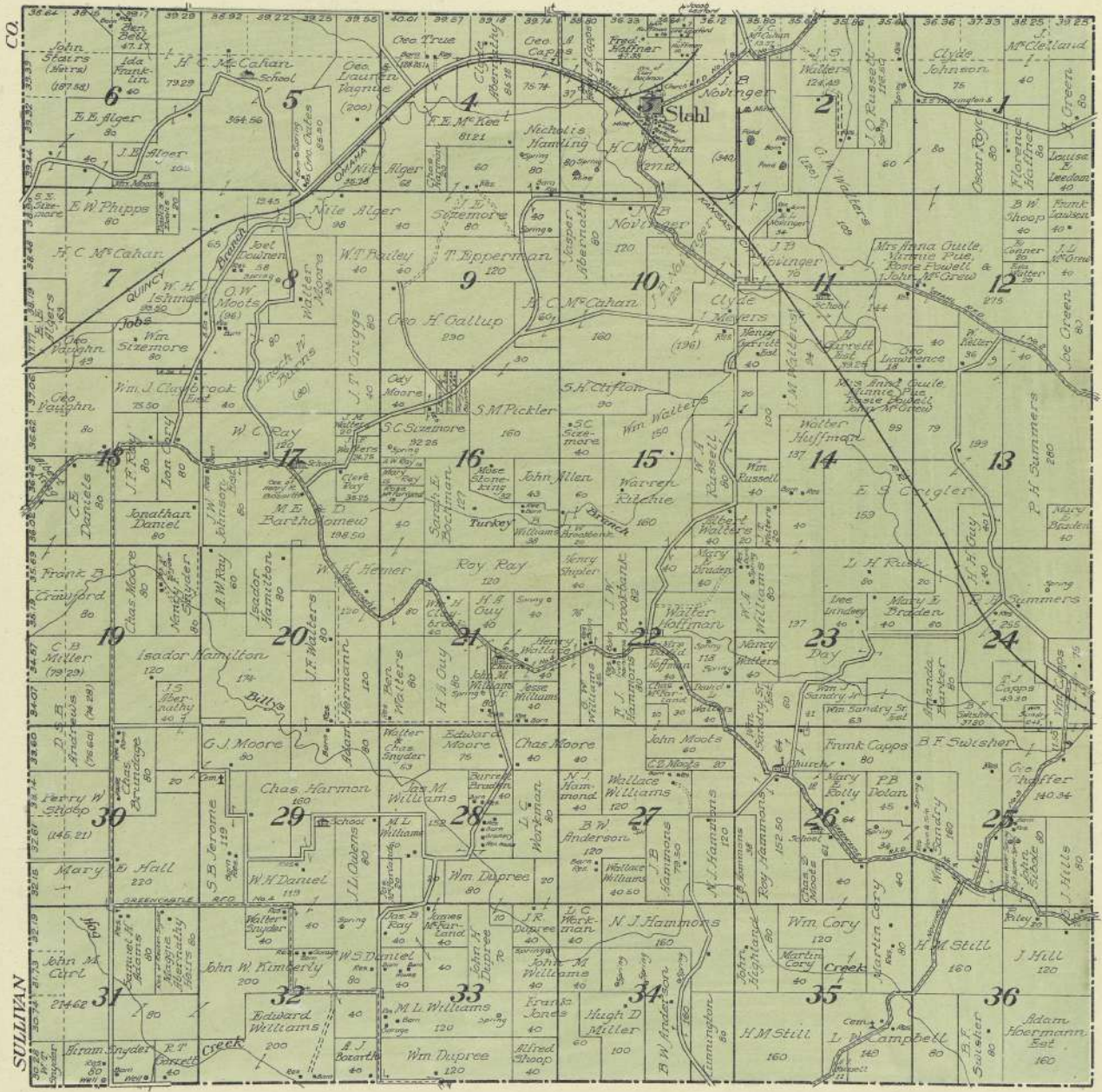
Ben. ...

Ben. ...

Ben. ...

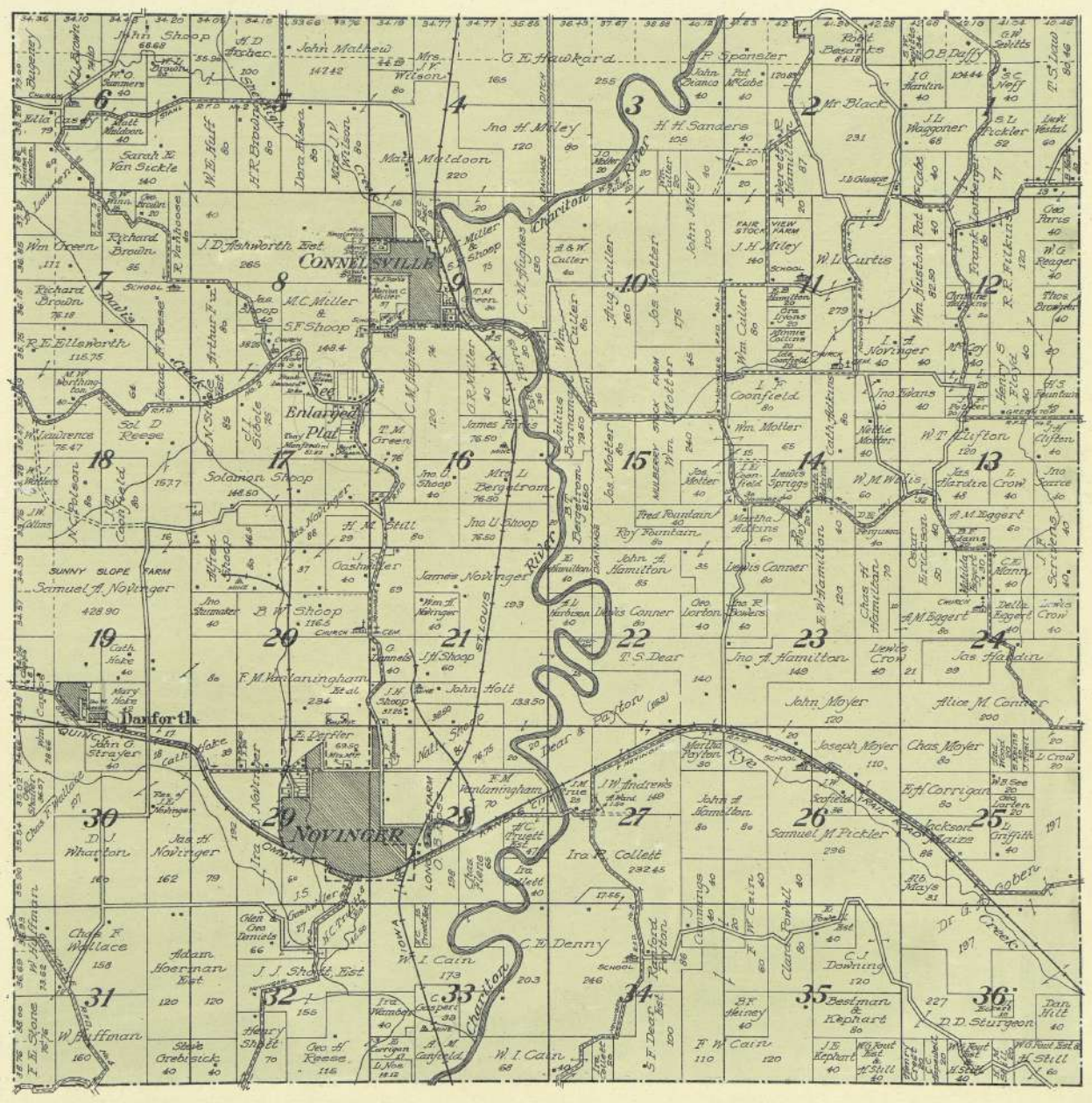


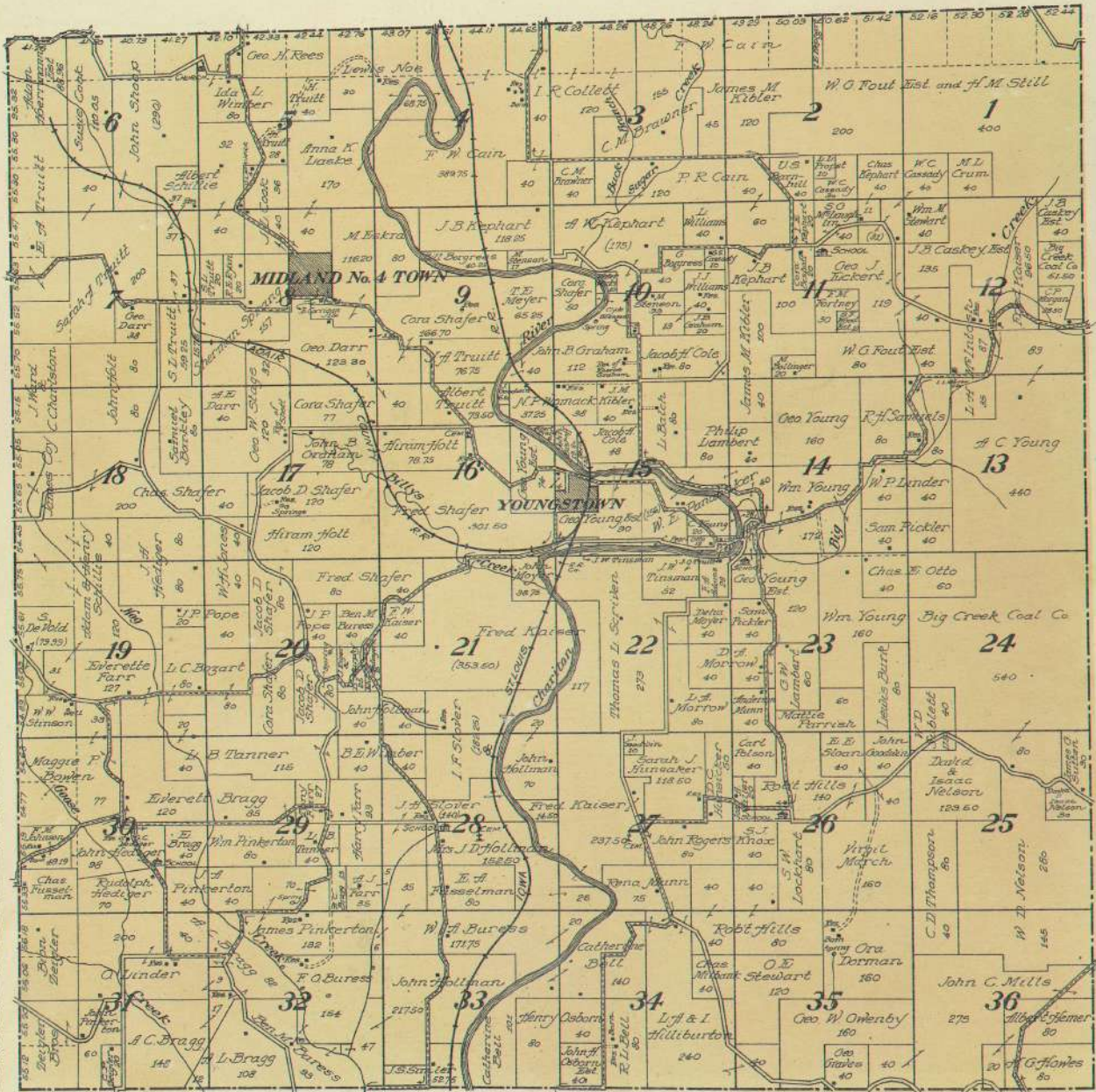
MAP OF
TOWNSHIP 63 N., RANGE 17 W.
OF THE 5th P. M.
 Scale 2 inches to 1 mile





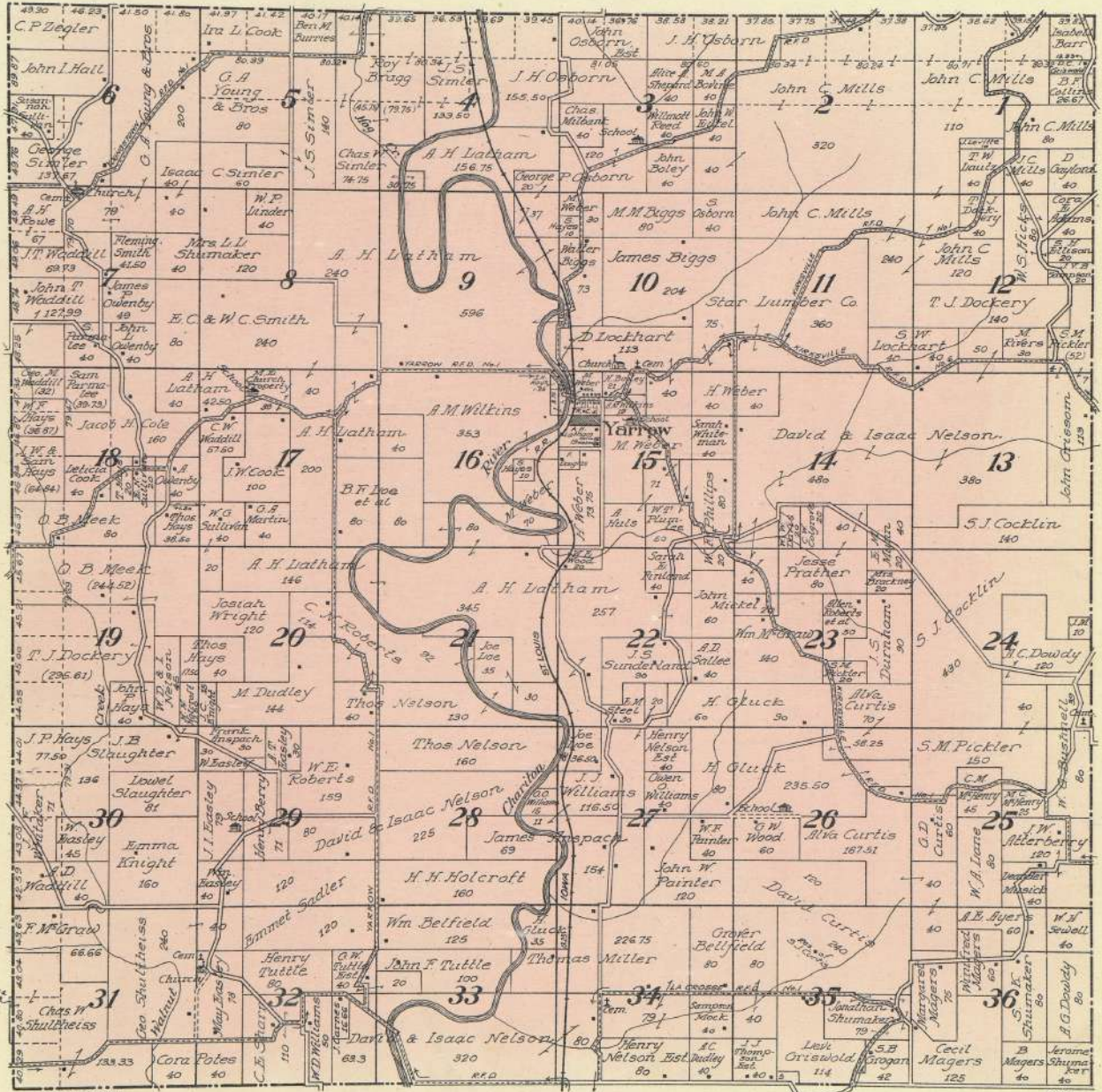
MAP OF
TOWNSHIP 63 N., RANGE 16 W.
OF THE 5th P. M.
 Scale 2 inches to 1 mile





MAP OF
TOWNSHIP 61 N., RANGE 16 W.
 OF THE 5th P. M.

Scale 2 inches to 1 mile

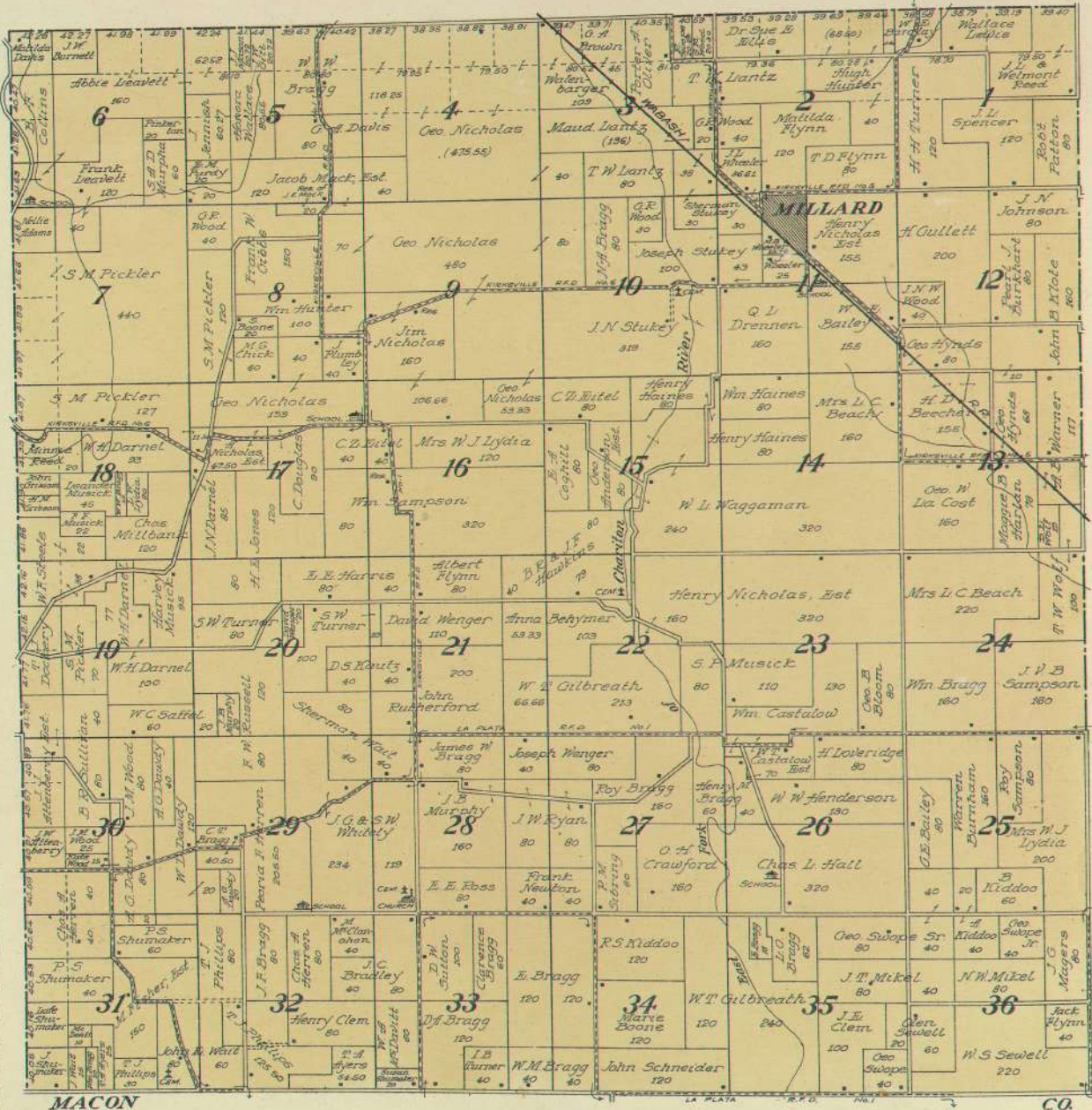


MACON

CO.



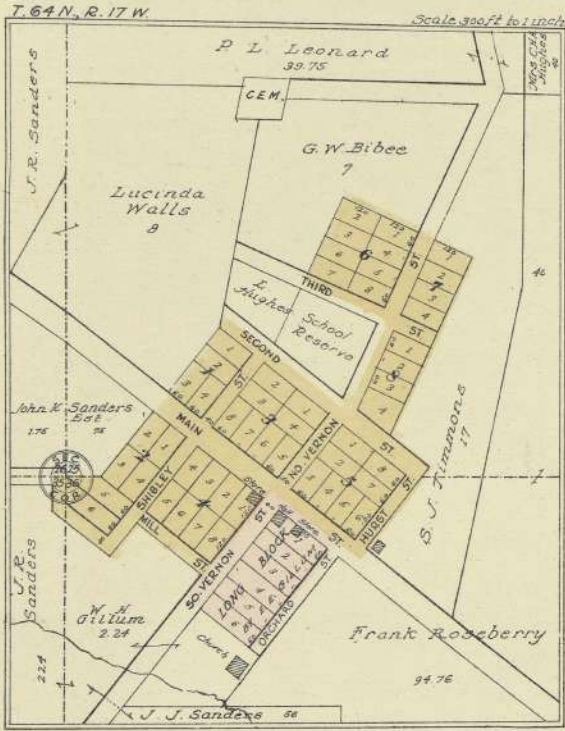
MAP OF
TOWNSHIP 61 N., RANGE 15 W.
OF THE 5th P. M.
 Scale 2 inches to 1 mile



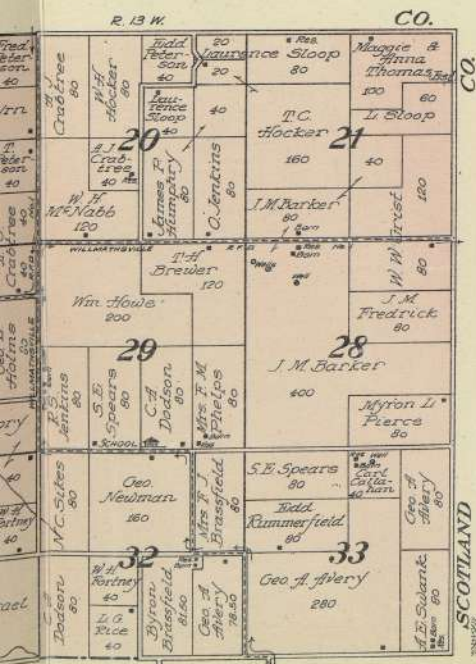
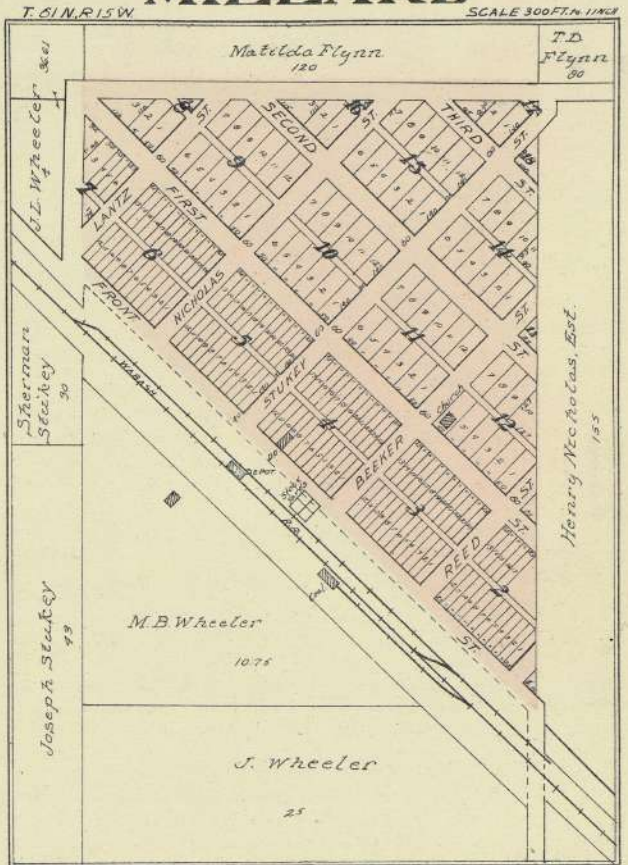
MACON

CO.

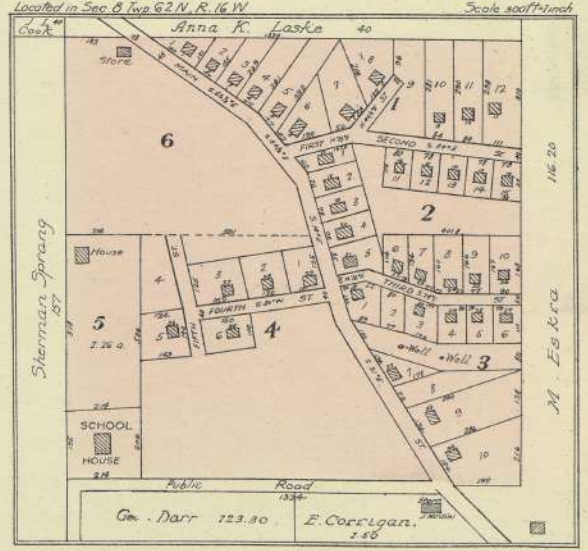
SHIBLEYS POINT



MILLARD

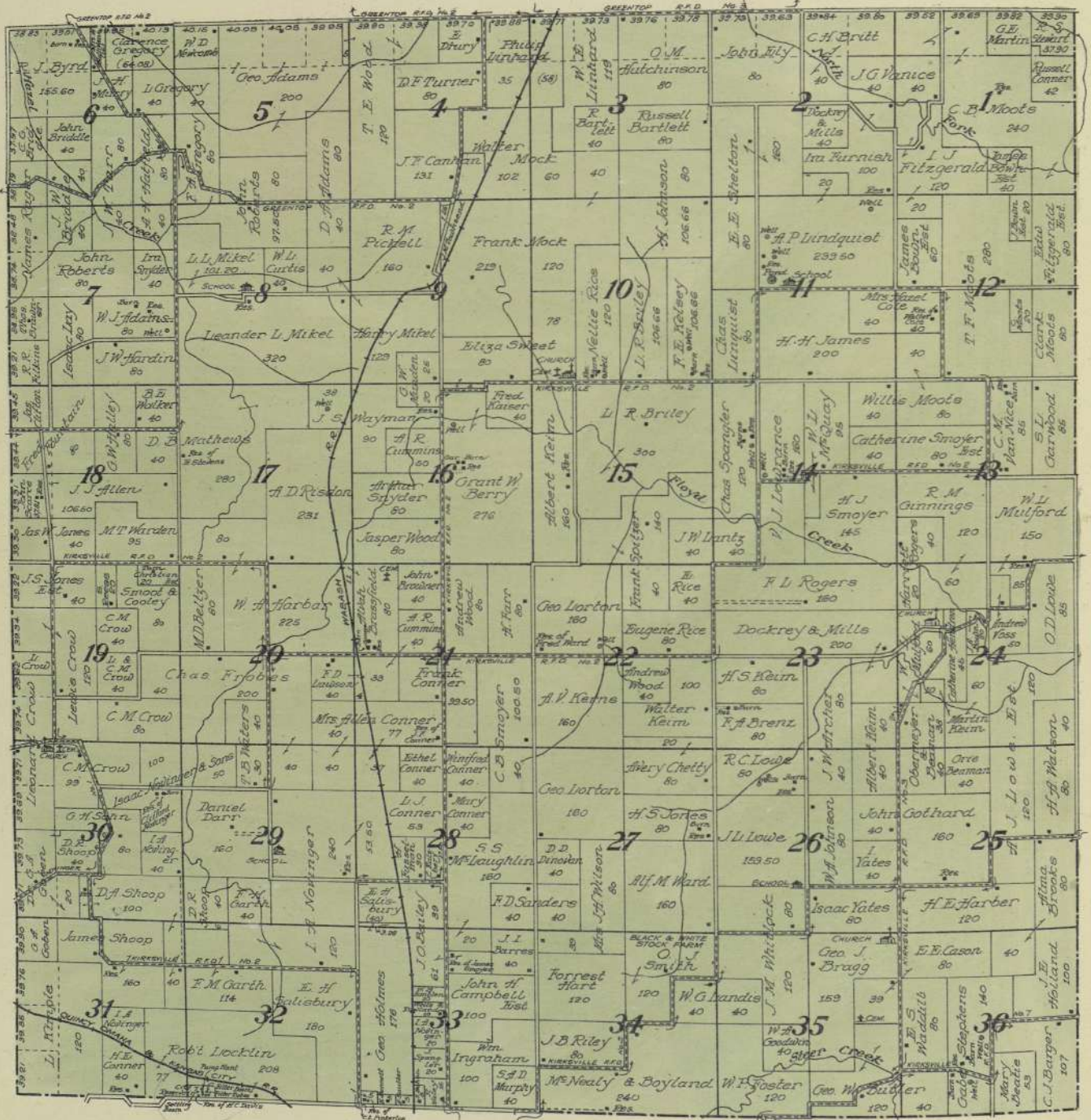



MIDLAND No 4 TOWN





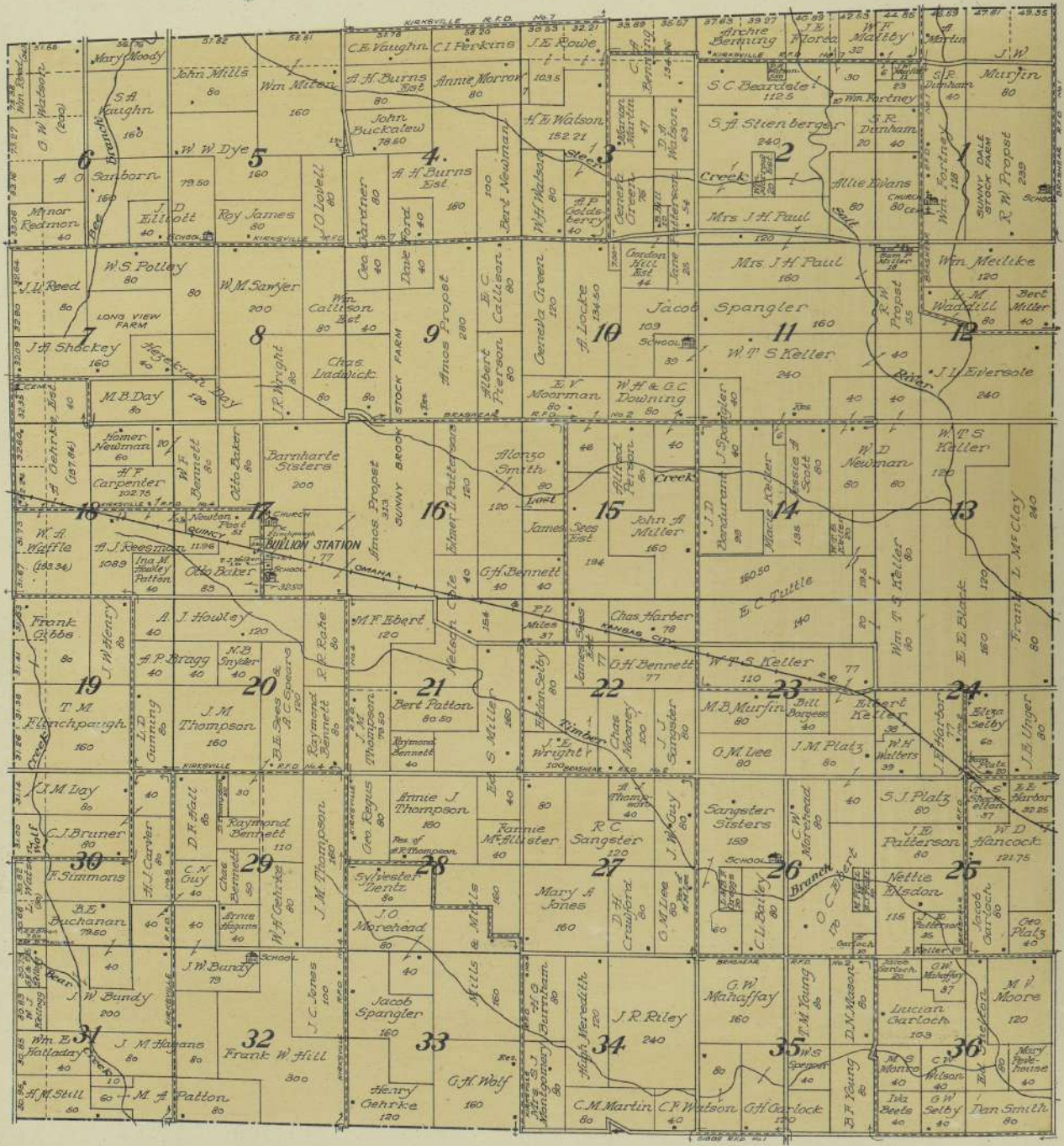
MAP OF
TOWNSHIP 63 N., RANGE 15 W.
 OF THE 5th P. M.
 Scale 2 inches to 1 mile





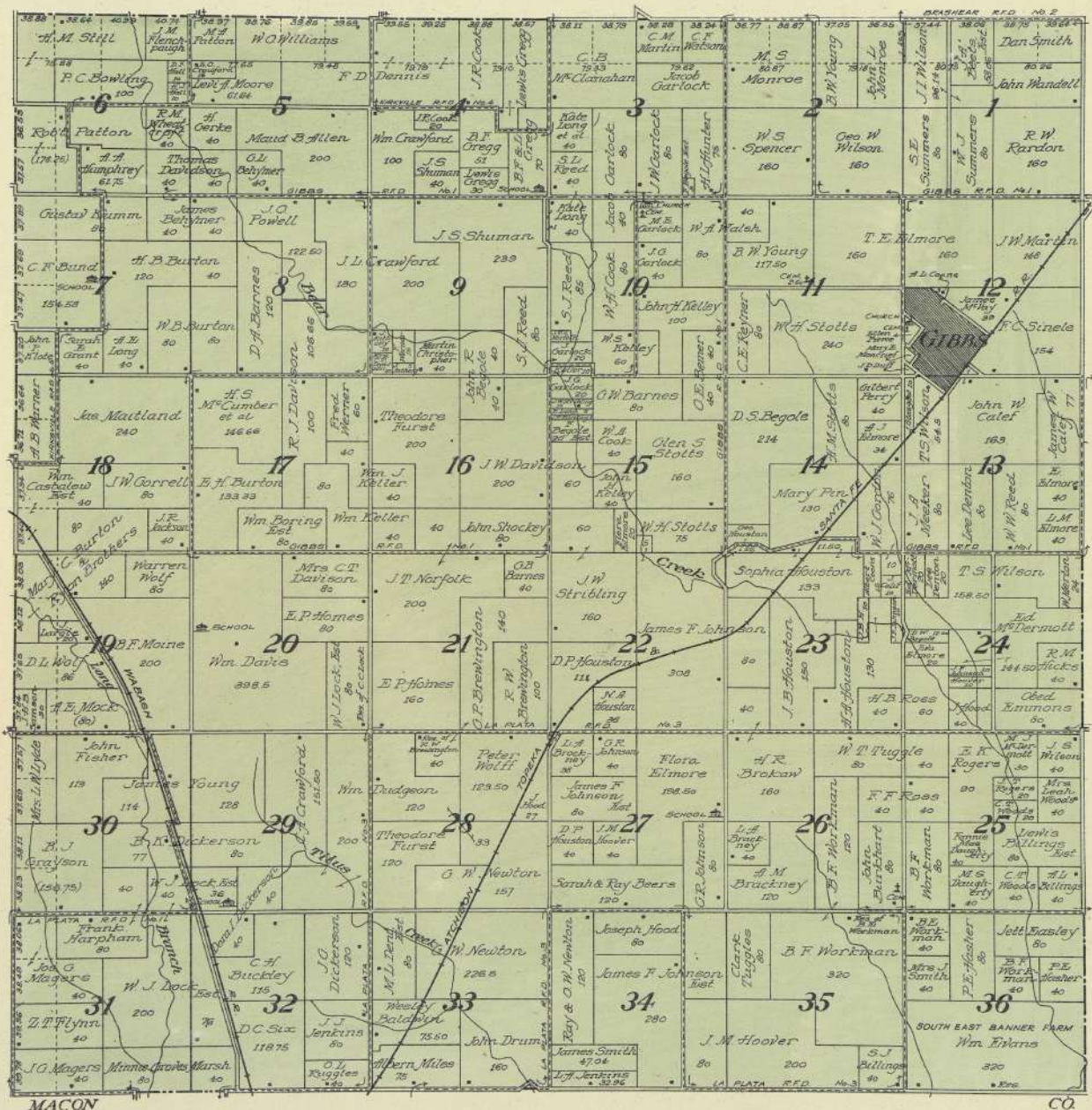
MAP OF
TOWNSHIP 62 N., RANGE 14 W.
 OF THE 5th P. M.

Scale 2 inches to 1 mile





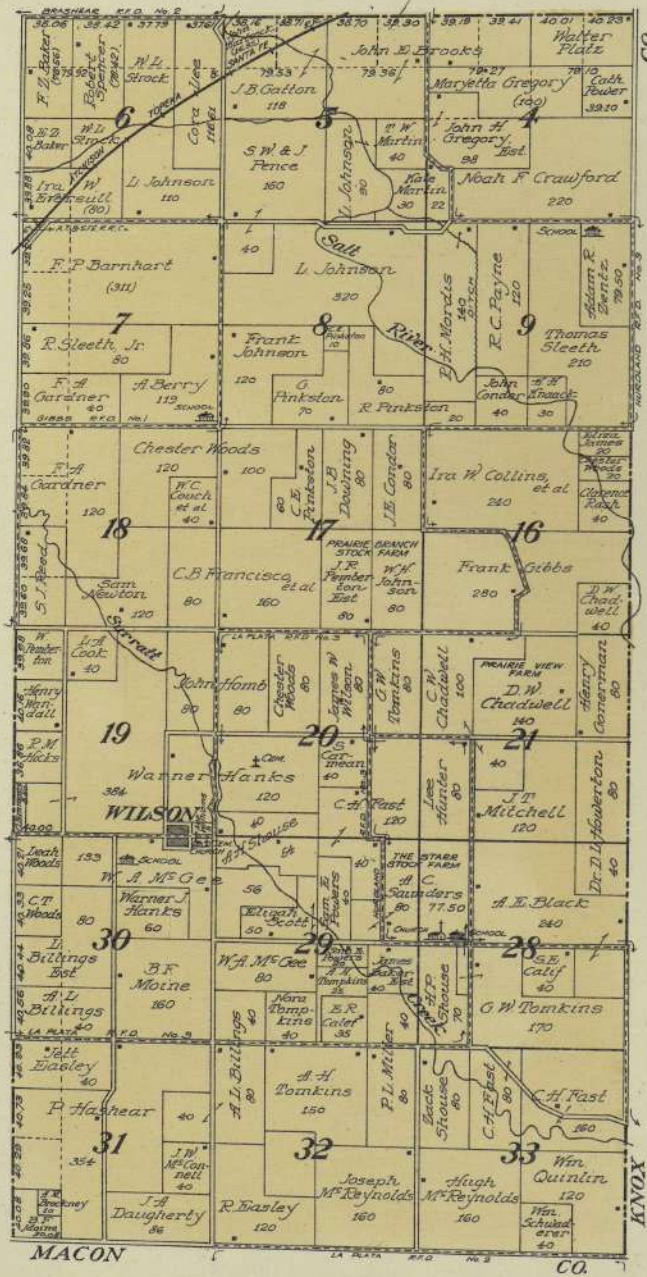
MAP OF
TOWNSHIP 61 N., RANGE 14 W.
OF THE 5th P. M.
 Scale 2 inches to 1 mile



MACON

CO

MAP OF
 Part of Township 61 N., Range 13 W.
 OF THE 5th P. M.
 Scale 2 inches to 1 mile



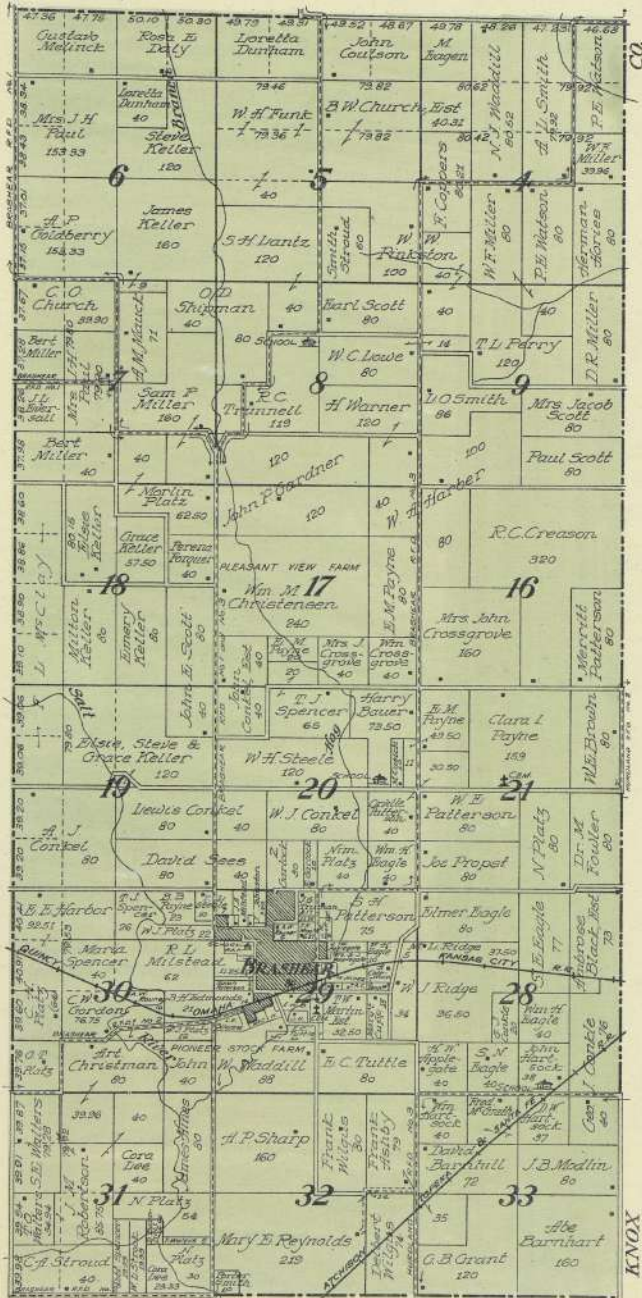


MAP OF

Part of Township 62 N., Range 13 W.

OF THE 5th P. M.

 Scale 2 inches to 1 mile



KNOX

