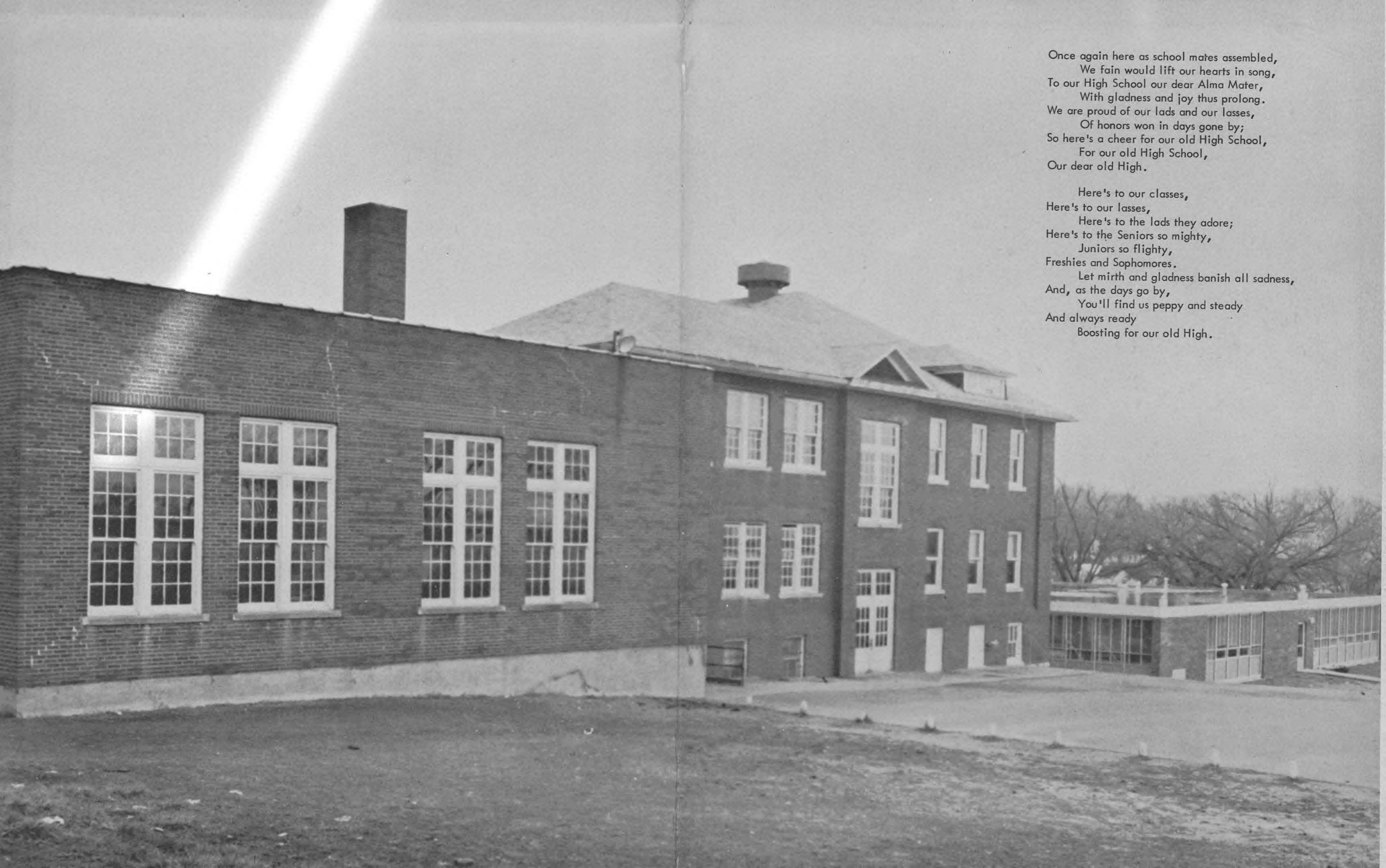


1962

THE ECHO



Once again here as school mates assembled,
We fain would lift our hearts in song,
To our High School our dear Alma Mater,
With gladness and joy thus prolong.
We are proud of our lads and our lasses,
Of honors won in days gone by;
So here's a cheer for our old High School,
For our old High School,
Our dear old High.

Here's to our classes,
Here's to our lasses,
Here's to the lads they adore;
Here's to the Seniors so mighty,
Juniors so flighty,
Freshies and Sophomores.
Let mirth and gladness banish all sadness,
And, as the days go by,
You'll find us peppy and steady
And always ready
Boosting for our old High.

Dear Twila

About seven years ago
& started to school. And seven-
year ago you started too. —
During this time we hardly talk
or really got acquainted. But
you're still a friend.

You Classmate
Jimmie
Kathms

P.S. I still say you
can't hit 5 home
runs

Congratulations on your band promotion.
I'll look forward to your being in Sr Band
next year.

Pat Blinn

Dear Twila,

I would write
something in your annual
like you did in mine but
I wouldn't because all the
boys would laugh at me.

Not that you aren't good
enough for that but I wouldn't
better. I have really enjoyed
being in your class these past
years and I hope there will
be many more. Stay as smart
as you are and you will always be

Remember me on schooldays,
Remember me on vacation,
Remember me on your
And send love an' interest
Ronald K.
Bond

your
2 good
2 be
I gotten

your classmate
Darryl Brim



The Echo

STEWARTSVILLE HIGH SCHOOL
Stewartsville, Missouri
David Powell, Editor
LaDon Piepergerdes, Asst. Editor
Bill Thompson, Business Manager



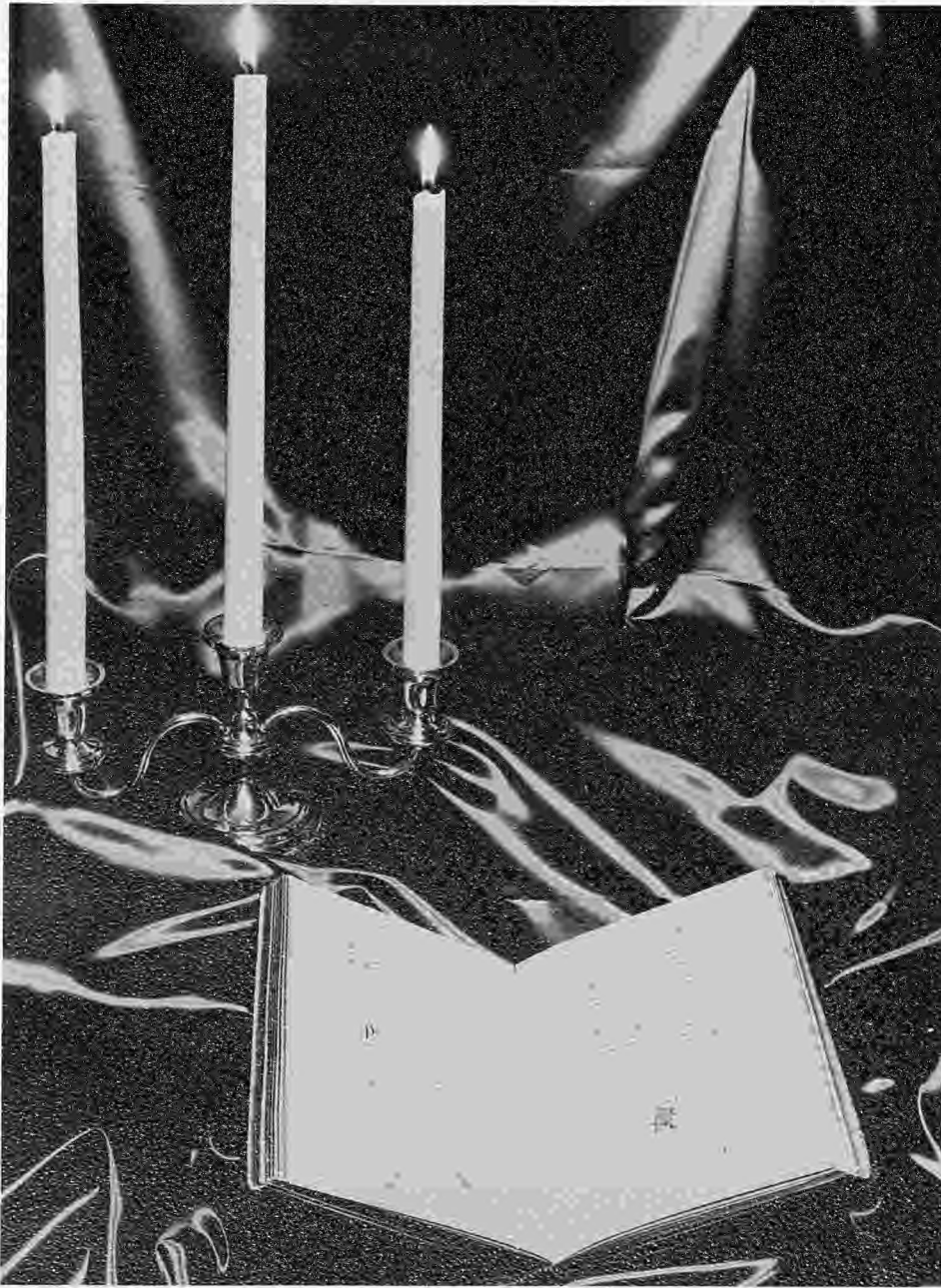
Board of Education

FIRST ROW: Left To Right, Eldon Haskell, Superintendent; Frank Spencer, Secretary; Howard Waller, President; Orice McCord, Treasurer. SECOND ROW: Ralph Colhour, Howard Hamann, Dallas Pickett.

Student Council

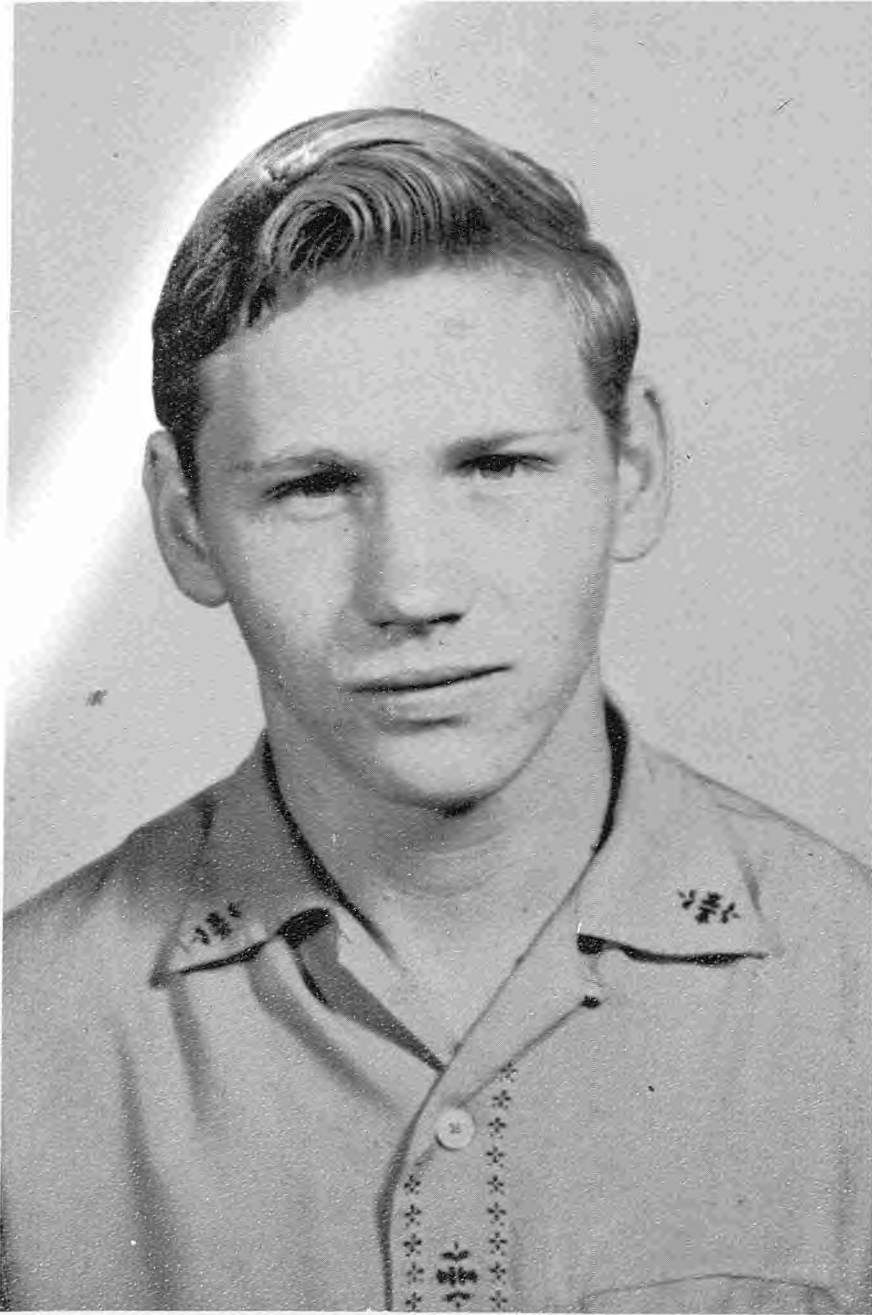
FIRST ROW: Left To Right, Carol Gillip, Secretary; David Powell, Vice President; Mr. Haskell, Superintendent; Kent Pickett, President; Gregg Hinderks, Treasurer. SECOND ROW: Gerald Buhman, Gary Johnson, Jerry Bullock, Barbara Bonnett, Joanna Fowler, Ceola Smith, Carol Groom, Darlene Silver.





DEDICATION

Dedication



VERNAL DEAN COGDILL

Here rests his head upon the lap of earth
A youth to fortune and to fame unknown.
Fair science frowned not on his humble birth,
And melancholy marked him for her own.

Large was his bounty, and his soul sincere,
Heaven did a recompense as largely send;
He gave to misery all he had, a tear;
He gained from Heaven ('twas all he wished) a friend.

No farther seek his merits to disclose,
Or draw his frailties from their dread abode,
(There they alike in trembling hope repose)
The bosom of his Father and his God.



FACULTY



LLOYD NELSON
Principal

B. S. in Secondary Education
Northwest Missouri State College
Subjects: Industrial Arts, Mathematics
Sponsor: Freshman Class



ELDON HASKELL
Superintendent

M. S. in Education
B. S. in Secondary Education
Northwest Missouri State College
Biarritz University, Biarritz, France
Drake University, Des Moines, Iowa
Sponsor: Student Council and Senior
Class



PAUL BOYD

B. S. in Secondary Education
Northeast Missouri State Teachers
College
Subjects: English, Speech
Sponsor: Senior Class and School
Plays



LILY BOYD

B. S. in Secondary Education
Northeast Missouri State Teachers
College
Subjects: Home Economics, Art
Sponsor: Pep Club

LARRY FRENCH

B. S. in Secondary Education
Northwest Missouri State College
Missouri University
Subjects: Mathematics and Science
Sponsor: Freshman Class

*Superintendent and
High School Faculty*



VELMA YARDLEY

B. S. in Secondary Education
Northeast Missouri State Teachers
College
Subject: Commerce
Sponsor: Cardinal Capers, Echo,
and Junior Class

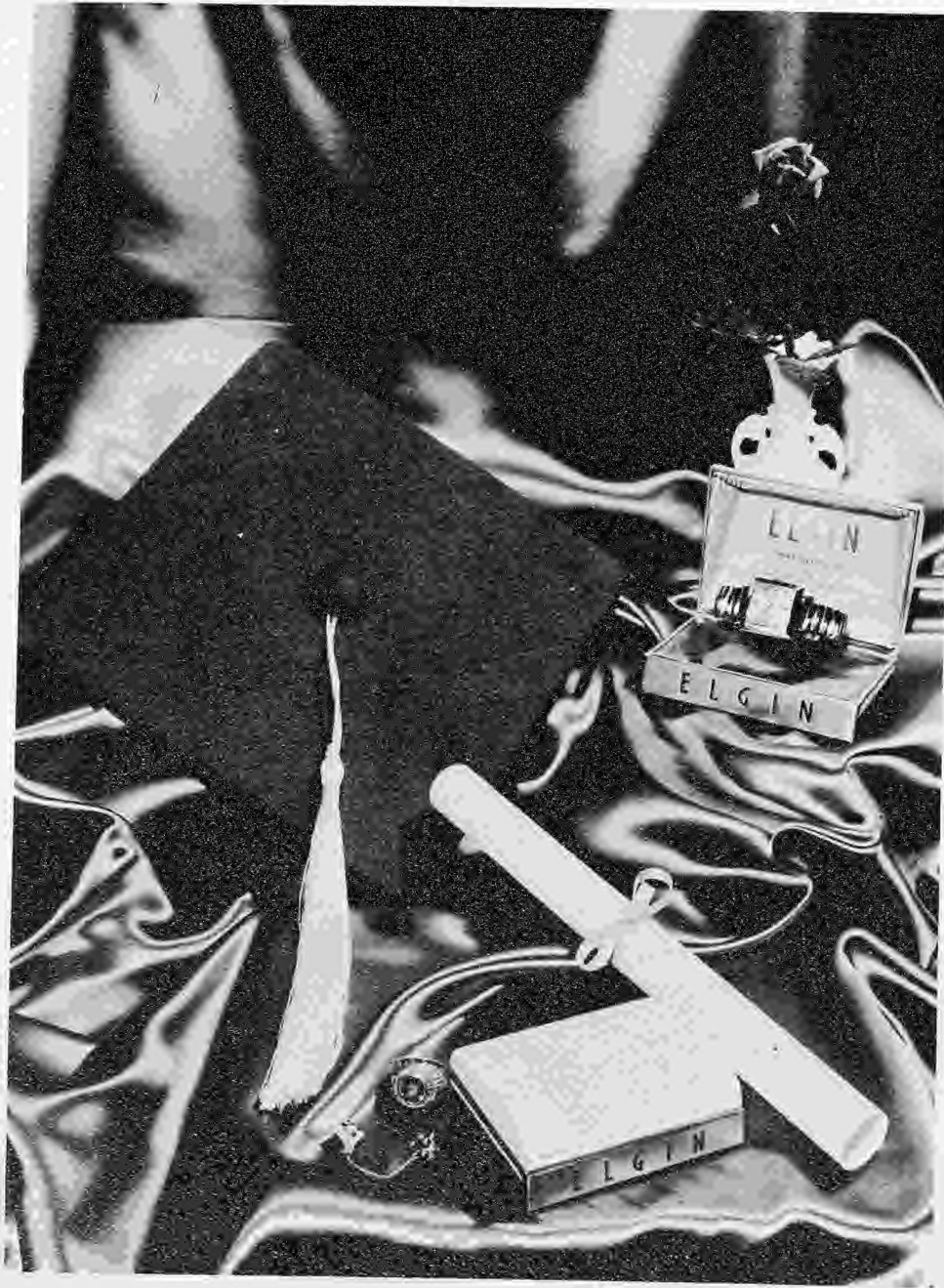
EARL SHULTZ

B. S. in Secondary Education
Tarkio College
Subjects: Physical Education,
Health, and History
Coach: Football, Basketball, and
Track
Sponsor: Sophomore Class

ROBERT BLISS

B. A. in Music Education
University of Kansas City
Subjects: Girls' Glee Club, Boys'
Glee Club, Band, and Elementary
Music





GRADUATES



RITA CASTLE

At Clarksdale:	
Basketball	2
Girls' Cheerleader	1
Softball	1
Pep Club	1,2
Band	1
Girls' Glee Club	1
County Music Contest	1
District Music Contest	1
Student Council	2
Student Council Officer	2
At Stewartsville:	
Girls' Cheerleader	3,4
Pep Club	3,4
Girls' Glee Club	3,4
County Music Contest	3,4
District Music Contest	3,4
Junior Play	3
Library Staff	4
Cardinal Capers Staff	4
Echo Staff	4



POLLY COLLINS

At Clarksdale:	
Basketball	1
Girls' Cheerleader	2
Softball	1
Pep Club	1
Band	1
At Stewartsville:	
Pep Club	3,4
Glee Club	3,4
County Music Contest	3,4
District Music Contest	3,4
Office Staff	4
Cardinal Capers Staff	4
Echo Staff	4

WAYNE COLHOUR

Football	1,2,3,4
Football Co-Captain	4
Homecoming King Candidate	4
Basketball	1
Baseball	1
Track	2,3,4
Conference Track Meet	2,3,4
District Track Meet	2,3,4
Senior Play	4
Boys' Glee Club	1
Student Council	1
P. T. A. Carnival King	1
Cardinal Capers Staff	4
Echo Staff	4

LEE CRAIG

At Neshaminy, Philadelphia, Pa.	
Basketball	2
Baseball	2
At Stewartsville:	
Football	1,2,3,4
Football Co-Captain	3,4
Basketball	1,3,4
Track	3,4
Conference Track Meet	3,4
District Track Meet	3,4
State Track Meet	3
Baseball	1
Band	3,4
Band Council	4
Boys' Glee Club	1
Mixed Chorus	1
County Music Contest	1,3,4
District Music Contest	1,3,4
Senior Play	4
Junior Play	3
Class Officer	1
Library Staff	2,3
Speech Club	4
Office Staff	2,3,4
Cardinal Capers Staff	4
Echo Staff	4



ANN FISHER



At Clarksdale:	
Basketball	2
At Stewartville:	
Glee Club	3,4
Pep Club	3,4
Pep Club Officer	4
Girls' Cheerleader	4
County Music Contest	3,4
District Music Contest	3,4
Library Staff	4
Cardinal Capers Staff	4
Echo Staff	4



CAROL GILLIP

At Clarksdale:	
Basketball	1
Pep Club	1,2
Band	1,2
Girls' Glee Club	1,2
Class Officer	1
At Stewartville:	
Band	3,4
Band Council	3
Girls' Glee Club	3,4
Vocal Sextet	3
Mixed Clarinet Quartet	3
County Music Contest	3
District Music Contest	3
State Music Contest	3
Pep Club	3,4
Style Show	4
Student Council	4
P. T. A. Attendant	3
Homecoming Attendant	4
Cardinal Capers Staff	4
Echo Staff	4
Library Staff	4

STEVE GIBSON

Basketball	1,2,3,4
Football Manager	1,2,3
Track	2
Baseball	1
Band	1,2,3,4
Boys' Glee Club	1,2
Mixed Chorus	1,2
Brass Sextet	2,3,4
County Music Contest	1,2,3,4
District Music Contest	2
Conference Track Meet	2
Senior Play	4
Junior Play	3
One - Act Play	2
Speech Club	4
Library Staff	2

JERRY GRIFFIN

Football	1,2,3,4
Band	1,2,3,4
Boys' Glee Club	1,2
Brass Sextet	2,3,4
County Music Contest	1,2,3,4
District Music Contest	1,2,3,4
State Music Contest	1
Senior Play	4
Student Council	1
Cardinal Capers Staff	4
Echo Staff	4



BONNIE HINDERKS



Basketball	1,2,4
Pep Club	1,2,3,4
Girls' Cheerleader	3
Band	1,2,3,4
Band Council	4
Student Band Director	4
Girls' Glee Club	1,2,3,4
Glee Club Manager	4
Mixed Chorus	1,2
County Music Contest	1,2,3,4
District Music Contest	1,2,3,4
State Music Contest	1,2,3
Junior Play	3
Senior Play	4
Style Show	2,3
P. T. A. Carnival Queen	4
Girls' State Alternate	3
Student Council	3
Class Officer	2
Cardinal Capers Staff	4
Echo Staff	4

DONNIE JACKSON



Football	1,2,3,4
Basketball	1,2,3,4
Track	2,3,4
Conference Track Meet	2,3,4
District Track Meet	2,3,4
State Track Meet	3
Baseball	1
Boys' Glee Club	1,2
Mixed Chorus	1,2
Senior Play	4
Teen Town President	3,4
Library Staff	2,3
Office Staff	4
Cardinal Capers Staff	4
Echo Staff	4

CONNIE JACKSON



Basketball	1,2,3,4
Pep Club	1,2,3,4
Baseball	1
Majorette	3,4
Girls' Glee Club	1,2,3,4
County Music Contest	1,2,3,4
District Music Contest	1,2,3,4
One - Act Play	2
Commerce Contest	3
Teen Town Officer	3,4
Style Show	2
Carnival Capers Staff	4
Echo Staff	4

NANCY KEESAMAN

Basketball	1,2,3,4
Pep Club	1,2,3,4
Softball	1
Band	1,2,3,4
Saxophone Quartet	1
Baritone Saxophone Solo	2,3
Girls' Glee Club	1,2,3,4
Mixed Chorus	1,2,3
Girls' Sextet	1,2,3
County Music Contest	1,2,3,4
District Music Contest	1,2,3,4
Junior Play	3
Senior Play	4
Class Officer	1
Commerce Contest	3
Style Show	2,3,4
Cardinal Capers Staff	4
Echo Staff	4
P. T. A. Carnival Queen	2



JANIE JARRETT

At Clarkdale:	
Basketball	2
Band	1,2
Class Officer	1
Pep Club	1
At Stewartsville:	
Class Officer	4
Band	3,4
Glee Club	3,4
Band Council	3,4
County Music Contest	3,4
District Music Contest	3,4
Vocal Sextet	3
Girls' Cheerleader	3
Pep Club	3,4
Pep Club Officer	3
Clarinet Quartet	3
Clarinet Trio	4
Homecoming Attendant	3,4
Cardinal Capers Staff	4
Style Show	4
Library Staff	4
Citizenship Award	4
Echo Staff	4



RONNIE MARIOTT

At Clarkdale:	
Band	1
Boys' Glee Club	1
Basketball	1
District Music Contest	1
At Stewartsville:	
Cardinal Capers Staff	4
Echo Staff	4





BOB MATTER

Football	2,3,4
Homecoming Attendant	3
Track	2
Conference Track Meet	2
Band	1,2
Junior Play	2,3
Senior Play	4
P. T. A. Carnival King	2
Office Staff	4
Cardinal Capers Staff	4
Echo Staff	4



LARRY MEYERDIRK

Track	3,4
Boys' Glee Club	1,2,3,4
Cardinal Capers Staff	4
Echo Staff	4

KATHLEEN McCORD



Basketball	1,2,3,4
Pep Club	1,2,3,4
Head Majorette	3,4
Majorette	1,2
Band	4
Girls' Glee Club	1,2,3,4
Mixed Chorus	1,2
Vocal Solo	2,3,4
Vocal Sextet	2,3
Madrigal Choir	3
County Music Contest	1,2,3,4
District Music Contest	1,2,3,4
Senior Play	4
Junior Play	3
One-Act Play	2,3
Softball	1
Style Show	2,3,4
Speech Club	4
Office Staff	4
Cardinal Capers Staff	4
Echo Staff	4
Alternate Cheerleader	3

ROGER PARSON

Football	1,2,3,4
Basketball	1,2,3
Track	2,3,4
Conference Track Meet	2,3,4
District Track Meet	2,3,4
State Track Meet	3
Baseball	1
Band	1,2,3,4
Band Council	4
Boys' Glee Club	1,2
County Music Contest	1,2,3,4
District Music Contest	1,2,3,4
One - Act Play	2
Class Officer	3,4
Library Staff	1,2,3
Office Staff	4
Cardinal Capers Staff	4
Echo Staff	4



CAROLE PARSON

Basketball	1,2,3
Basketball Co-Captain	3
All Conference Basketball	3
Pep Club	1,2,3
Softball	1
Alternate Cheerleader	3
Homecoming Attendant	2
Band	1,2,3
Girls' Glee Club	1,2,3
Bass Clarinet Solo	1,2,3
Mixed Clarinet Quartet	1,2,3
Woodwind Quartet	3
Woodwind Quintet	1
County Music Contest	1,2,3
District Music Contest	1,2,3
State Music Contest	1,2,3
One - Act Play	2
Class Officer	1
Student Council	1
Teen Town Officer	2
Style Show	2
Commerce Contest	3
Soil Conservation Speech	3
March of Dimes Chairman	3



KENT PICKETT

Football	1,2,3,4
Football King Candidate	1
Track	3
Conference Track Meet	3
Band	1,2,3,4
Band Council	2,3,4
President Band Council	3,4
Boys' Glee Club	1,2
Mixed Chorus	1,2
Madrigal Choir	1
County Music Contest	1,2,3,4
District Music Contest	1,2,3,4
Citizenship Award	4
Senior Play	4
Junior Play	3
One - Act Play	2
Student Council	2,4
Student Body President	4
Class Officer	1
Speech Club	1





LADON PIEPERGERDES

Basketball	1,2,4
Pep Club	1,2,3,4
Pep Club Officer	2
Girls' Cheerleader	3
Homecoming Attendant	3
Band	1,2,3,4
Glee Club	1,2,3,4
Mixed Chorus	1,2
County Music Contest	1,2,3,4
District Music Contest	1,2,3,4
State Music Contest	3
Band Council	2,3
Class Officer	3,4
Senior Play	4
Style Show	2,3
Cardinal Capers Staff	4
Echo Staff	4

SHARON POWELL

Basketball	1,2,3,4
Basketball Co-Captain	4
Varsity Cheerleader	2,3,4
Cheerleaders' Clinic	4
Pep Club	1,2,3,4
Softball	1
Band	1,2,3,4
Band Council	1,2
Majorette	1
Glee Club	1,2,3,4
Mixed Chorus	1,2
County Music Contest	1,2,3,4
District Music Contest	1,2,3,4
State Music Contest	3
Piano Solo	3
Accompanist	2,3
Junior Play	3
Senior Play	4
District Dance-Off	2,3
Class Officer	3
Commerce Contest	3
Girls' State	3
Speech Club	4
Style Show	2
Office Staff	4
Cardinal Capers Staff	4
Echo Staff	4



DAVID POWELL

Football	1,2,3,4
All-Conference Football	4
Homecoming King	4
Basketball	1,2,3,4
Track	2,3,4
Conference Track Meet	2,3,4
District Track Meet	2,3,4
Baseball	1
Band	1,2,3,4
Band Council	3,4
County Music Contest	1,2,3,4
District Music Contest	1,2,3,4
Boys' Glee Club	1,2,3
Mixed Chorus	1,2
Mixed Clarinet Quartet	4
Play Staff	3,4
P. T. A. Carnival Attendant	3
Student Council	3,4
Class Officer	4
Class President	4
Library Staff	2,3,4
Cardinal Capers Staff	4
Echo Staff	4



BILL THOMPSON

Basketball	1,2,3,4
Basketball Co-Captain	3,4
Football	1,2,3,4
All-Conference Football	4
Homecoming Escort	2,3,4
Track	2,3,4
Conference Track Meet	2,3,4
District Track Meet	2,3,4
State Track Meet	3
Baseball	1
Boys' Glee Club	1,2,3
Mixed Chorus	1,2
Junior Play	3
Senior Play Staff	4
Student Body President	3
Student Council	3
Class Officer	3
Library Staff	3
Speech Club	4
Cardinal Copers Staff	4
Echo Staff	4



BILL SPENCER

Basketball	1
Track	2,3,4
Conference Track Meet	2,3,4
District Track Meet	2,3,4
State Track Meet	3
Boys' Glee Club	1,2,3
One-Act Play	2
Class Officer	1
Speech Club	4
Cardinal Copers Staff	4
Echo Staff	4



JANET TYER

Basketball	1,2,3,4
Basketball Co-Captain	4
Softball	2
Varsity Cheerleader	2,3,4
Pep Club	1,2,3,4
Cheerleading Clinic	4
Homecoming Queen	4
Homecoming Attendant	1
Drum Majorette	3,4
Majorette	1,2
Band Council	3,4
Girls' Chorus	1,2,3,4
Chorus Librarian	4
Junior Play	3
Senior Play	4
Student Council	1,2
Class Officer	1,2,3
Cardinal Copers Staff	1
Echo Staff	4
Office Staff	3,4
Style Show	2,3
District Teachers' Program	4





HELEN WATKINS

- Basketball Manager 1,2
- Girls' Glee Club 1,2,3,4
- County Music Contest 1,2,3,4
- District Music Contest 1,2,3,4
- Pep Club 1,2



RICHARD WHITEMAN

- Basketball 1,2,3,4
- Basketball Co-Captain 4
- Football 1,2,3,4
- All-Conference Football 4
- Homecoming Escort 4
- Track 2,3,4
- Conference Track Meet 2,3,4
- District Track Meet 2,3,4
- State Track Meet 3
- Baseball 1
- Boys' Glee Club 1,2,3
- Mixed Chorus 1,2
- Student Council 2
- Class Officer 2
- Library Staff 3
- Band 1,2,3,4
- Band Council 3,4
- County Music Contest 1,2,3,4
- District Music Contest 1,2,3,4
- Speech Club 4
- P. T. A. Carnival King 4
- Cardinal Capers Staff 4
- Echo Staff 4

LARRY WATKINS

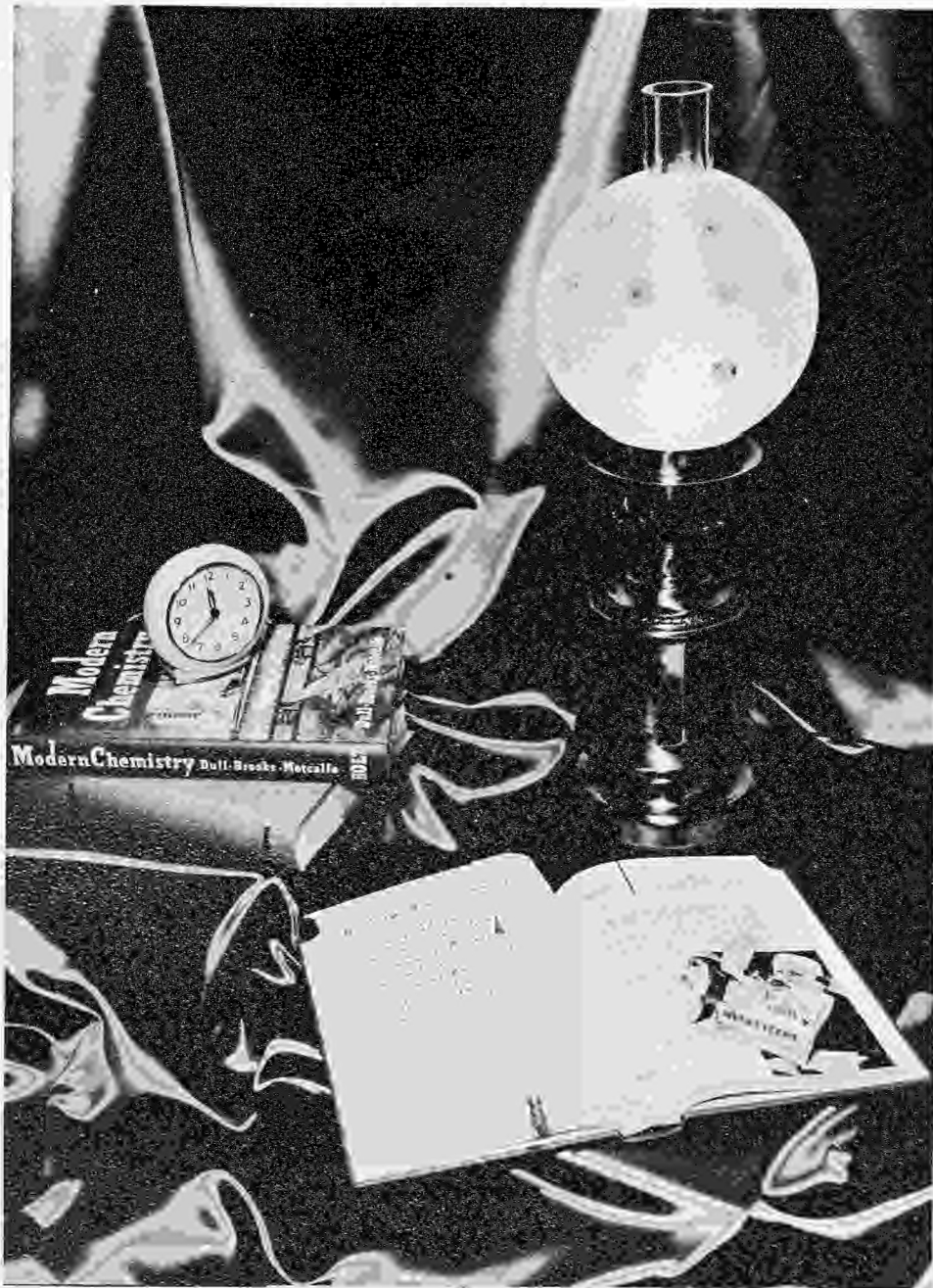
- Football 4
- Track 4
- Boys' Glee Club 1,2,3
- Cardinal Capers Staff 4
- Echo Staff 4



YVONNE YARDLEY

- Basketball 1,2
- Pep Club 1,2,3
- Softball 1
- Band 1,2
- Glee Club 1,2,3
- Class Officer 4
- Student Council 1
- Commerce Contest 2,3
- Style Show 3
- Varsity Cheerleader 4
- P. T. A. Carnival Queen 1
- Sweetheart Queen 3
- Homecoming Attendant 4
- Cardinal Capers Staff 4
- Echo Staff 4
- Cheerleading Clinic 4





UNDERGRADS



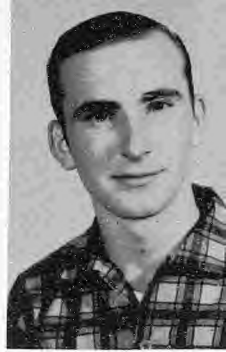
BARBARA BONNETT



NANCY BONNETT



LARRY BOYLES



JERRY BULLOCK



WAYNE COGDILL



SHARON CLAYCOMB



SUE GIBSON



BONNIE GROOM

Junior Class

Not Pictured: JACKIE PINION

CAROL GROOM



TOMMY KINCAID



MARY LIZAR



ERNIE MALLEN



JUDY STEVENSON



LINDA THORNTON



EDITH WATKINS



XENIA WATKINS





CAROL BOTTS



SHARON BOYLES



KONRAD BROWN



STEPHEN BURRIS



RICHARD CLEMMONS



VIRGINIA COLDWELL



RONNIE CONNELL



JOANNA FOWLER



ROGER FLINN



JONELLE GRIFFIN



LYNDA HANNAH



GREGG HINDERKS



DORIS HORSMAN



STEVE HOVENGA



EDDIE PIEPERGERDES



JUDY HARRAH



DANNY POWELL



JUDY RIGGS



BILLY MADDOCK



MARY MARKLEY



LYNN PICKETT



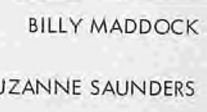
LARRY TILLER



JOHNNY WHEELER



DARLENE WHITEMAN



SUZANNE SAUNDERS



SANDRA SELLERS



CEOLA SMITH



FRANKLIN WHITMER



DARLENE WHITEMAN



FRANKLIN WHITMER



DARLENE WHITEMAN



FRANKLIN WHITMER



DARLENE WHITEMAN



FRANKLIN WHITMER



DARLENE WHITEMAN



FRANKLIN WHITMER

SOPHOMORE

CLASS



DONNA BOTTS

GERALD BUHMAN

HAZEL CASTLE

POLLY CHASE

KEITH CLOUSE



BILLY CORNELIUS

LINDA GEORGE

BOB GIBSON

ERMIT GILLIP

JOANNE GROOM

Not Pictured: LUCILLE PIEPERGERDES



JEAN ANN HARRAH
LYNN McCORD

GARY JOHNSON
GREGG PEARSON

JACKIE FLINN
WANDA RUNNELS

SHARON KINCAID
ROGER SHEWEY

RUTH ANN McBRIDE
DARLENE SILVER

FRESHMAN

CLASS



JIMMY SPENCER

LINDA STEVENSON

CONNIE TYER

MAETTA WATKINS

MIKE YARNELL





MRS. LOLA MUNSHAW

St. Joseph Junior College
Northwest Missouri State College
Grade: Eighth



MRS. BILLIE SHULTZ

B. S. in Elementary Education
St. Joseph Junior College
Northwest Missouri State College
Grade: Seventh

Grade School Faculty



MRS. DORIS CLOUSE

B. S. in Elementary Education
St. Joseph Junior College
Northwest Missouri State College
Grade: Sixth



MRS. WILLA RUGH HOLLEY

B. S. in Elementary Education
Central Missouri State College
Northwest Missouri State College
Grade: Fifth

MRS. JOSEPHINE McCOLLOCH

Northwest Missouri State College
Grades: Third and Fourth



MRS. ARDELLE CLOUSE

B. S. in Elementary Education
St. Joseph Junior College
University of Missouri
Grades: First and Second



LEE ANDERSON



GERALDINE BANKS



JIMMY BANKS



LINDA BULLOCK



NANCY CLEVENGER



CAROL EVERETT



BILLY FARR



ROSA GRIFFIN



SHARON GROOM



EVA HAMANN

Eighth Grade

PEGGY HAMANN



LINDA HEIMBAUGH



SANDRA HINDERKS



BECKY PICKETT



MARILYN SCHLEICHER



BILL SELLARS



JOE STEVENSON



SHERRY WATKINS



YVONNE WATKINS



ROBIN WINGER





KEITH BROCKMAN



BETTY COLHOUR



CHESTER CLAYCOMB



SUSAN FLINN



MARY JANE GROOM



CAROL HAMANN



JEANETTE HAMANN



JERRY HARRAH



TWILA HIDY



RONNIE MADDOX

Seventh Grade

DARRYL IRINYI



MARGARET MARKLEY



TOM MATTER



LINDA PINION



KAREN SCHLEICHER



STERLING SILVER



BETH STEVENSON



JIMMIE WATKINS



CAROL WINGER





DONNA AUGHINBAUGH

DIANA BAILEY

SONDRA BOTTS

STEVEN FAGAN

VETA FORDYCE



STEVEN FRANCIS

VICKI GIBSON

DENNIS HANNA

CARROLL HIDY

RONNIE HINDERKS



Sixth Grade



BYRON HOVENGA
STELLA PINION

KEN KEESAMAN
JOLENE POWELL

BETTY RUNNELS

RONNIE KINCAID
CHARLOTTE SILVER

GEORGE PICKETT
ANNETTE SMITH



JARVIS SMITH

JEAN STEVENSON

ANN THOMPSON

NANCY TILLER

WILBUR WALLER

MARTHA WINGER





KAREN BANKS



SHERRIE BOTTS



BRENDA BROCKMAN



BRUCE BROCKMAN



LARRY COGDILL



NANCY EVERETT



DAVID FARR



JUANITA FARR



MIKE FLINN



DAVID GRIFFIN



SONDRA GRIFFIN



JERRY GROOM



ROSEMARY HAMAN



DONNA HARRAH



BRICE HINDERKS



JACKIE MADDOCK



ANNE MALLEN



DARWIN MARKS

FRANK MATTER



RANDY VAUGHN

BRUCE DALE MOSS



MERLE WATKINS

DAVID PICKETT



TOMMY WATKINS

DOUGLAS PICKETT



JANICE WHITMER

ROGER POWELL



MAEVA WINDSOR

SHERYL SHEPARD



HAL WINGER





JIMMY AUGHINBAUGH



GAILYN CLAYCOMB



LINDA CLAYCOMB



RICKIE DELANEY



PATRICIA FLINN



BENTON FORDYCE



MARK GREENE



JOYCE GROOM



MARVIN MALLEN



CAROL MARKLE



DENTON MARTIN



JOE PARTON



ROGER PARTON

MARIANNA PIEPERGERDES

DARREL POWELL

JENAN POWELL

JEAN ANN ROBBINS



JEFFREY SHEPARD



ROSS SHEWEY



JULIANNA WATKINS



LARRY THORNTON



HELEN GILL



Fourth Grade



TOMMY AUGHINBAUGH



STEVE BOTTS



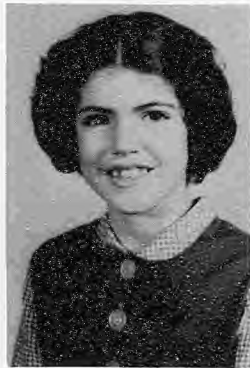
DANNY CLAYCOMB



SHERMAGNE CLAYCOMB



DWIGHT CLOUSE



MARY EILLEN COOK



RONALD FORDYCE



SCOTT GREENE

Third Grade

DWIGHT HAMANN



BETTY HARRAH



PAMELA O'DELL



BINA SUE RUNNELS



BARBARA SCHLEICHER



STEPHEN SCHLEICHER



GAIL THOMPSON



NEIL WIGGER





TERESA BAILEY



RHONDA BLISS



NANCY AUGHINBAUGH



ROBERT CASHATT



LARRY CLAYCOMB



GAROLD DUNGY



MARY KAY FARR



BILLY GILL



GREGG GRIFFIN



GEORGE GROOM

NANCY HINDERKS

BENNY PETTY

MARCIA SHUMATE

KEITH SMITH



PATTY JO SELLARS



DOUG SPENCER



STEVE WINDSOR



ROBERT WINGER



Second Grade



JAMES BAUER



CHRISTINE BLISS



LINDA CASHATT



JAMES CLAYCOMB



BARBARA CLAYCOMB



JANE ANN DEVERS



BARBARA HARRAH



STEVIE EVERETT



LOUIS FRANCIS



PRUDY GRIFFIN



JERRY MADDOCK

First Grade

CAROLE ANNE MATTER

DEBRA PETTY

MICHAEL MARTIN

JOHN POWELL

RICHARD ROE



BILLY SAUNDERS



JANINE SCHLEICHER



DIRK SCHNEIDER



EMILIE SHEPARD



BRENDA WHITMER





Pep Club

FRONT ROW: Left To Right, L. Thornton, J. Tyer, C. Tyer, M. Lizar, S. Powell, Y. Yardley. SECOND ROW: B. Hinderks, L. Piepergerdes, C. Gillip, J. Jarrett, C. Jackson, S. Saunders, K. McCord. THIRD ROW: R. Castle, C. Leslie, D. Whiteman, S. Gibson, N. Keesaman, K. Kincaid, J. Flinn, D. Botts, L. McCord. FOURTH ROW: C. Groom, L. Stevenson, J. Harrah, B. Bonnett, S. Boyles, S. Sellers, L. Pickett, B. Groom, J. Riggs, M. Watkins, L. Hannah. FIFTH ROW: A. Fisher, Mrs. Boyd (Sponsor), J. Groom, J. Stevenson, H. Castle, P. Collins, R. McBride, D. Silver, J. Fowler, C. Smith.

Girls' Cheerleaders

Carol Groom
 Linda Hannah Lynn McCord
 Ceola Smith Rita Castle Ann Fisher





ATHLETICS



Football

FRONT ROW: Left To Right, Roger Parson, Donnie Jackson, Lee Craig, Wayne Colhour, Bill Thompson, Richard Whiteman, David Powell, Kent Pickett. THIRD ROW: Bob Gibson, Ernie Mallen, Johnny Wheeler, Steve Hovenga, Bob Matter, Larry Watkins.



Team

Pickett. SECOND ROW: Keith Clouse, Danny Powell, Eddie Pieperraedes, Jim Spencer, Jerry Griffin, Jack Pinion, Roger Flinn, Coach Shultz.



DAVID POWELL, Center
LARRY WATKINS, Center



BILL THOMPSON, End
LEE CRAIG, Halfback



KENT PICKETT, End
ROGER PARSON, Halfback

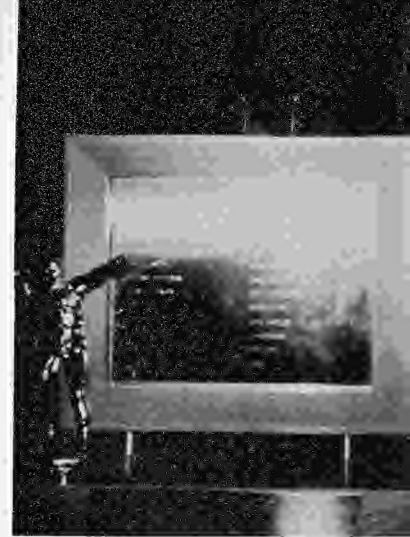


WAYNE COLHOUR, Center
JERRY GRIFFIN, End



DONNIE JACKSON, Halfback
RICHARD WHITEMAN, Quarterback





CONFERENCE TROPHY 1961

Offensive Team

Richard Whiteman
 Roger Parson Lee Craig
 Bill Thompson David Powell Kent Pickett

Football Record 1961

Stewartsville	40	Easton	18
Stewartsville	54	Pattonsburg	18
Stewartsville	44	South Nodaway	0
Stewartsville	25	North Andrew	12
Stewartsville	23	Union Star	13
Stewartsville	38	Easton	26
Stewartsville	57	Pattonsburg	32
Stewartsville	44	South Nodaway	6
Stewartsville	24	North Andrew	0
Stewartsville	40	Union Star	6

DEFENSIVE TEAM

Bill Thompson Richard Whiteman
 Kent Pickett Donnie Jackson David Powell Wayne Colhour

COACH EARL SHULTZ

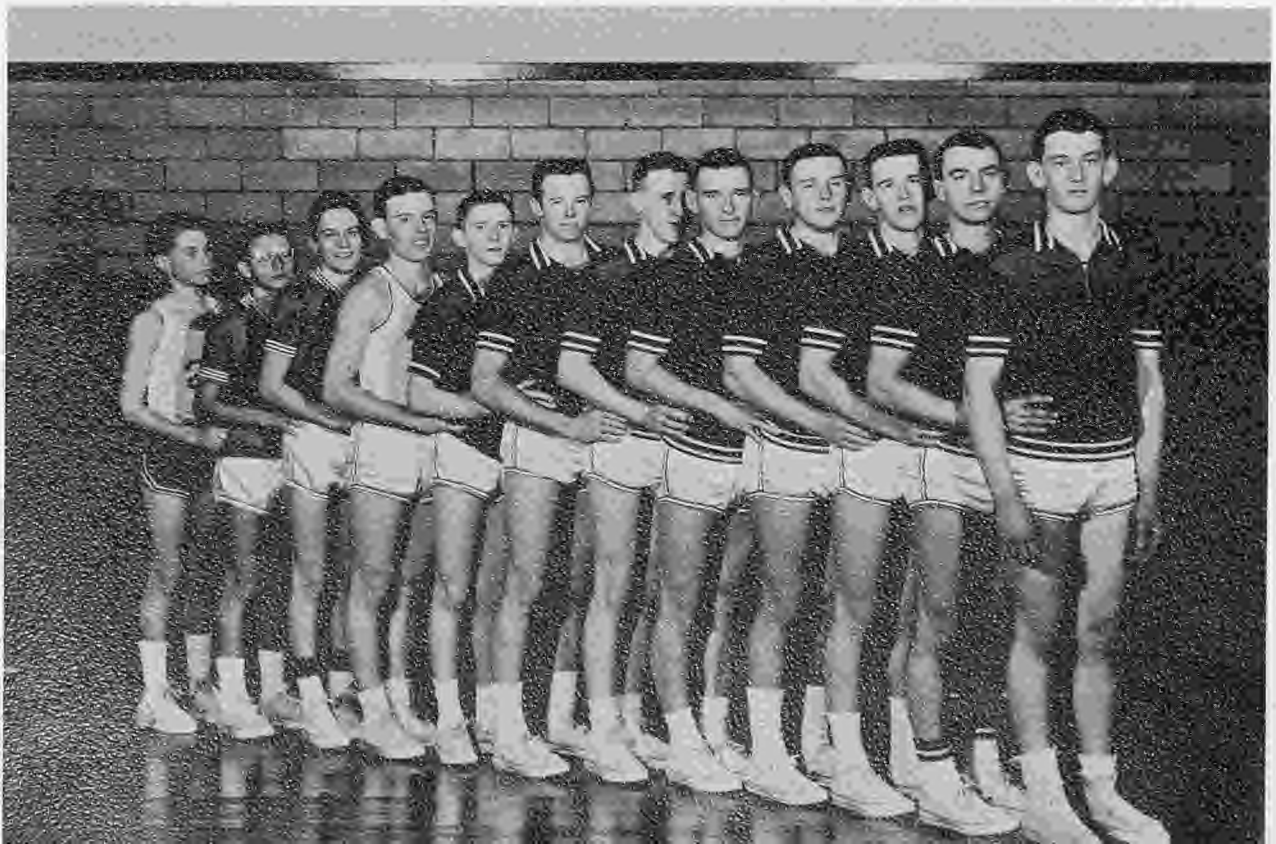




FIRST ROW: Left To Right, Bill Thompson, Ernie Mallen, Steve Hovenga, Richard Whiteman, Lee Craig, David Powell, Donnie Jackson.
 SECOND ROW: Mike Yarnell, Eddie Piepergerdes, Jimmy Spencer, Larry Boyles, Coach Shultz, Roger Flinn, Steve Gibson, Gary Johnson, Danny Powell.

Boys' Basketball

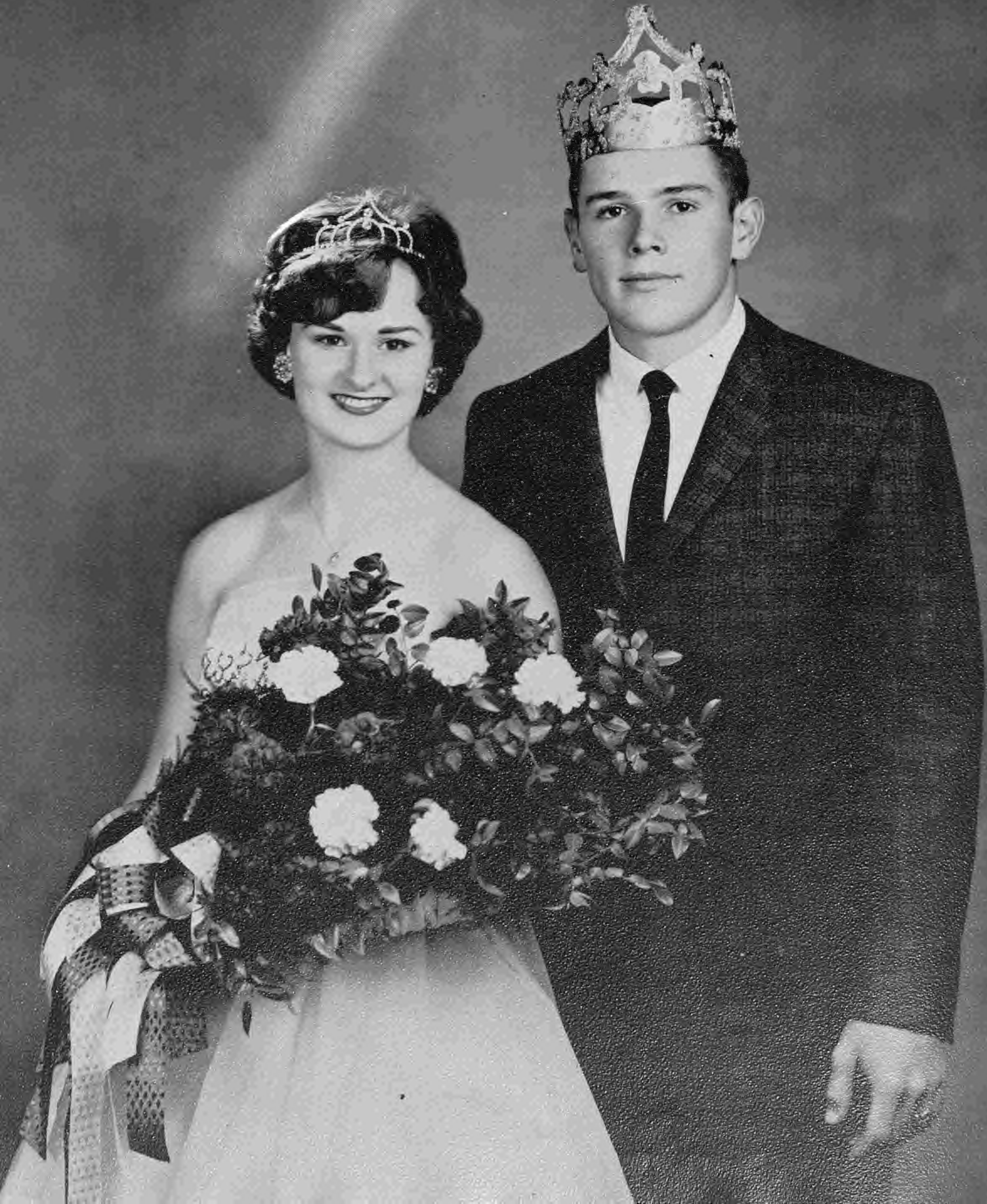
FRONT TO BACK: Steve Hovenga, Lee Craig, Richard Whiteman, David Powell, Donnie Jackson, Ernie Mallen, Bill Thompson, Steve Gibson, Roger Flinn, Eddie Piepergerdes, Danny Powell, Mike Yarnell.



Homecoming Royalty

QUEEN JANET TYER

KING DAVID POWELL





CAROL GILLIP

BILL THOMPSON



JANIE JARRETT

RICHARD WHITEMAN

Homecoming Attendants

YVONNE YARDLEY

WAYNE COLHOUR

Crown Bearer
LOUIS FRANCIS



Crown Bearer
CAROL ANN MATTER





Girls' Basketball Team

LEFT TO RIGHT: Nancy Bonnett, Jean Ann Harrah, Lucille Piepergerdes, Darlene Whiteman, Connie Jackson, Mary Lizar, Kathy McCord, Janet Tyer, Nancy Keesaman, Sharon Powell, Bonnie Hinderks, LaDon Piepergerdes. Ruth Ann McBride, Sue Gibson, Connie Tyer, Suzanne Saunders, Jackie Flinn.



LaDON PIEPERGERDES
Guard



CONNIE JACKSON
Guard



KATHY McCORD
Guard



BONNIE HINDERKS
Guard



Girls' Basketball Team

FIRST ROW: Left To Right, Mary Lizar, Kathy McCord, Janet Tyer, Nancy Keesaman, Sharon Powell, Connie Jackson, Bonnie Hinderks, LaDon Piepergerdes. SECOND ROW: Coach Shultz, Jackie Flinn, Jean Ann Harrah, Lucille Piepergerdes, Nancy Bonnett, Ruth Ann McBride, Connie Tyer, Sue Gibson, Suzanne Saunders, Darlene Whiteman.



SHARON POWELL, Co-Captain
Forward



JANET TYER, Co-Captain
Forward



NANCY KEESAMAN
Forward

BASKETBALL RECORD 1961-1962

Stewartsville 51	Gower 44	Stewartsville 60	Easton 40
Stewartsville 43	North Andrew 41	Stewartsville 63	North Andrew 51
Stewartsville 51	Osborn 38	Stewartsville 56	Easton 40
Stewartsville 48	North Andrew 42	Stewartsville 28	Fillmore 19
Stewartsville 38	Union Star 29	Stewartsville 40	Osborn 13
Stewartsville 48	Easton 47	Stewartsville 40	Plattsburg 29
Stewartsville 37	Fillmore 25	Stewartsville 22	DeKalb 19
Stewartsville 54	Winston 0	Stewartsville 51	Union Star 30



Varsity Cheerleaders

	Janet Tyer	Sharon Powell	
Connie Tyer			Mary Lizar
Linda Thornton		Yvonne Yardley	



SHARON POWELL, Senior
Third Year



YVONNE YARDLEY, Senior
First year



JANET TYER, Senior
Third year

CONNIE TYER, Freshman
First Year

MARY LIZAR, Junior
Second Year

LINDA THORNTON, Junior
First Year





Track Team

FIRST ROW: Left To Right, S. Hovenga, D. Jackson, L. Craig, R. Parson, R. Whiteman, D. Powell, B. Thompson. SECOND ROW: Coach Shultz, J. Pinion, J. Wheeler, R. Flinn, B. Spencer, L. Meyerdirk, E. Piepergerdes, D. Powell.

Junior High Boys' Basketball

FIRST ROW: Left To Right, B. Gibson, G. Pearson, B. Cornelius, J. Spencer, J. Stevenson, S. Silver. SECOND ROW: Coach Shultz, B. Farr, L. Anderson, J. Banks, G. Johnson, B. Sellars, K. Clouse, E. Gillip. THIRD ROW: J. Harrah, T. Watkins, D. Irinyi, T. Matter, K. Brockman, J. Maddock, C. Claycomb.





Boys' Cheerleaders

Beth Stevenson

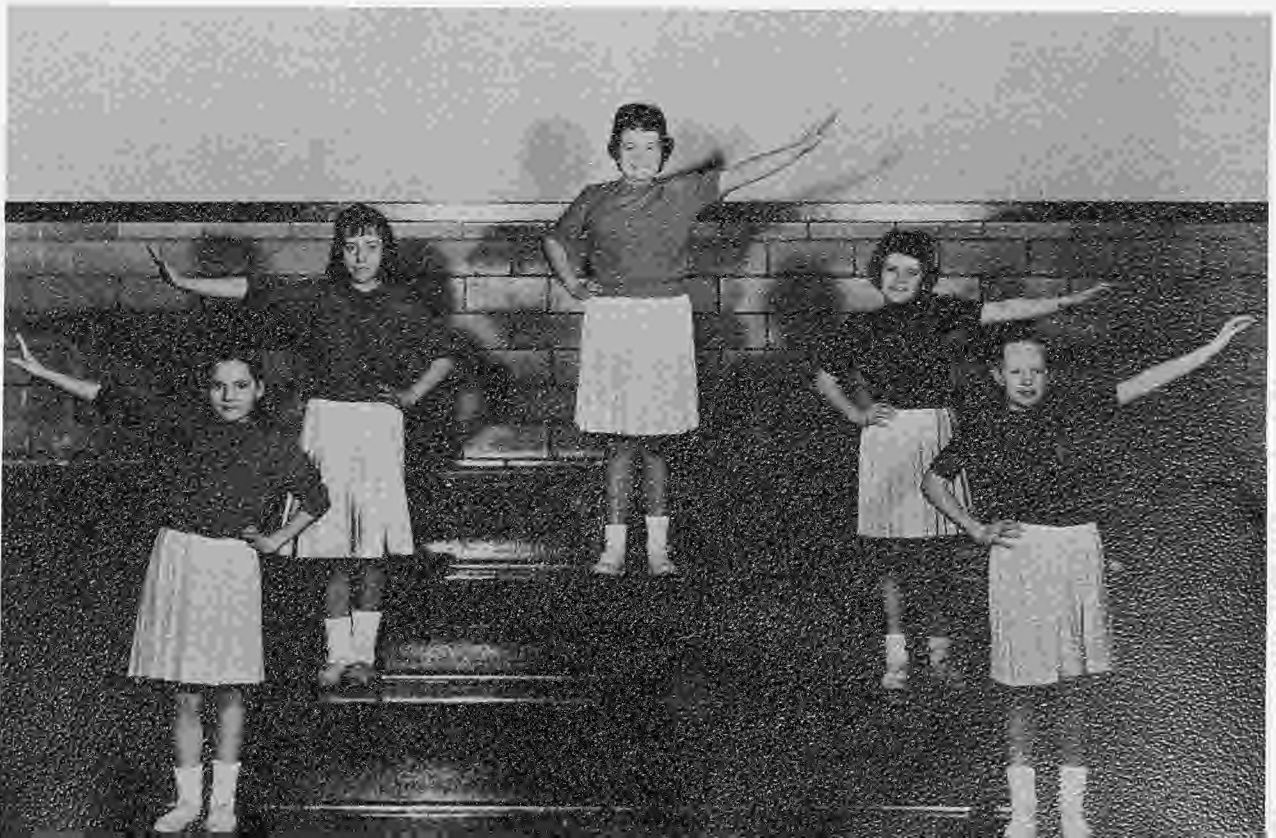
Sharon Groom
 Carol Everett Betty Colhour Geraldine Banks
 Susan Flinn Karen Schleicher

Junior High Cheerleaders

Jolene Powell

Betty Runnels Stella Pinion Vicki Gibson Ann Thompson

Girls' Cheerleaders





ACTIVITIES



Advanced

FIRST ROW: Left To Right, C. Gillip, R. Parson, J. Jarrett, L. Piepergerdes, L. Pickett, R. McBride, D. Powell, S. Gibson. SECOND ROW: K. Brown, B. Comelius, E. Piepergerdes. THIRD ROW: C. Everett, B. Pickett, L. Tiller, S. Powell, K. McCord, D. Whiteman, K. Pickett, R.



Band

D. Powell, L. Hannah, S. Saunders, G. Pearson, K. Clouse, L. Piepergerdes, N. Keesaman, G. Hinderks, S. Hovenga, R. Flinn, L. McCord, Whiteman, Mr. Bliss (Director), J. Griffin, J. Flinn, D. Botts, J. Spencer, L. Craig, B. Hinderks, F. Whitmer, J. Wheeler.

Drum

CONNIE JACKSON JANET TYER MARY LIZAR



Majorettes

CONNIE TYER KATHY McCORD SUE GIBSON





Girls' Glee Club

FIRST ROW: Left To Right, L. Hanna, C. Leslie, L. Piepergerdes, B. Groom, D. Whiteman, N. Keesaman, J. Jarrett, C. Gillip.
 SECOND ROW: Mr. Bliss (Director), C. Jackson, B. Bonnett, S. Claycomb, L. Pickett, J. Flinn, N. Bonnett, J. Harrah, W. Runnels, D. Botts.
 THIRD ROW: H. Watkins, D. Horsman, X. Watkins, J. Stevenson, B. Hinderks, S. Saunders, J. Groom, M. Watkins, M. Markley, J. Harrah.
 FOURTH ROW: R. Castle, C. Groom, L. George, J. Tyer, C. Tyer, L. McCord, K. McCord, L. Stevenson, H. Castle, J. Griffin, V. Caldwell, P. Chase.
 FIFTH ROW: A. Fisher, K. Kincaid, L. Piepergerdes, D. Silver, S. Gibson, R. McBride, S. Sellers, C. Smith, J. Riggs, S. Boyles, J. Fowler, M. Lizar, S. Powell.

Boys' Glee Club

FIRST ROW: Left To Right, G. Johnson, L. Meyerdirk, B. Cornelius, G. Pearson, M. Yarnell, E. Gillip.
 SECOND ROW: Mr. Bliss (Director), Wayne Cogdill, Ronnie Connell, Tommy Kincaid, Larry Boyles, Steven Burris, Billy Maddock





Intermediate Band

FIRST ROW: Left To Right, Marilyn Schleicher, Twila Hidy, Karen Schleicher, Wilbur Waller, Jimmie Banks, Betty Colhour, Keith Brockman, Stephen Fagan, George Pickett. SECOND ROW: Mr. Bliss (Director), Ann Thompson, Dennis Hanna, Darryl Irinyi, Bruce Brockman, Tommy Matter, Billy Farr, Jeanette Hamann, Ken Keesaman, Jolene Powell, Vicki Gibson.

Beginning Band

FIRST ROW: Left To Right, Marianna Piepergerdes, Julie Watkins, Ricky Delaney, Byron Hovenga, Doug Pickett, Frank Matter, Ross Shewey. SECOND ROW: Mr. Bliss (Director), Jarvis Smith, Susie Flinn, Brice Hinderks, Hal Winger, Mark Greene, Carroll Hidy, Sterling Silver, Stephen Francis.





QUEEN BONNIE HINDERKS



KING RICHARD WHITEMAN



PRINCE RONNIE KINCAID

P.J.A. Royalty



PRINCESS ANN THOMPSON

FIRST ROW: Left To Right, Crown Bearer L. Piepergerdes, Crown Bearer B. Greene, C. Bliss, J. Maddock, Queen B. Hinderks, King R. Whiteman, P. Sellars, G. Griffin, Crown Bearer S. Fagan, Crown Bearer B. Fowler. SECOND ROW: T. Aughinbaugh, P. O'Dell, J. Whitmer, B. Hinderks, Prince R. Kincaid, Princess A. Thompson, K. Schleicher, T. Matter, J. Powell, M. Greene. THIRD ROW: R. Winger, B. Sellers, D. Whiteman, J. Wheeler, S. Gibson, T. Kincaid, K. Kincaid, B. Cornelius, C. Tyer, J. Spencer.





Cardinal Capers Staff

FIRST ROW: Left To Right, Ronnie Marriott, Carol Gillip, Bill Spencer, Bonnie Hinderks, Richard Whiteman, David Powell, Donnie Jackson, Rita Castle. SECOND ROW: Yvonne Yardley, Connie Jackson, Kathy McCord, Janie Jarrett, Mrs. Yardley (Sponsor), Nancy Keesaman, Janet Tyer, LaDon Piepergerdes, Sharon Powell. THIRD ROW: Ann Fisher, Polly Collins, Roger Parson, Bill Thompson, Lee Craig, Larry Watkins, Wayne Colhour, Larry Meyerdirk. NOT PICTURED: Jerry Griffin, Bob Matter.

Echo Staff

FIRST ROW: Left To Right, Janie Jarrett, Carol Gillip, Bill Spencer, LaDon Piepergerdes, David Powell, Richard Whiteman, Bonnie Hinderks, Donnie Jackson. SECOND ROW: Ann Fisher, Polly Collins, Roger Parson, Bill Thompson, Larry Watkins, Mrs. Yardley (Sponsor), Wayne Colhour, Janet Tyer, Sharon Powell, Rita Castle. THIRD ROW: Yvonne Yardley, Kathy McCord, Ronnie Marriott, Lee Craig, Nancy Keesaman, Larry Meyerdirk, Connie Jackson. NOT PICTURED: Jerry Griffin, Bob Matter.





Office Staff

FIRST ROW: Left To Right, Lee Craig, Kathy McCord, Mr. Haskell, Superintendent; Roger Parson, Mary Lizer. SECOND ROW: Sharon Powell, Donnie Jackson, Bob Matter, Janet Tyer, Sue Gibson, Polly Collins, Yvonne Yardley.

Library Staff

FIRST ROW: Left To Right, Carol Gillip, Janie Jarrett, Mr. Boyd (Sponsor), Ann Fisher, Rita Castle. SECOND ROW: Xenia Watkins, David Powell, Nancy Bonnett.





The Student Body

Band Council

FIRST ROW: Left To Right, Lee Craig, David Powell, Mr. Bliss (Sponsor), Roger Parson, Janet Tyer. SECOND ROW: Richard Whiteman, Janie Jarrett, Bonnie Hinderks, Kent Pickett.





Bus Drivers

Lloyd Shewey
Louie Gibson
Ronald Greene

*Other Employees
of the
Stewartsville School*



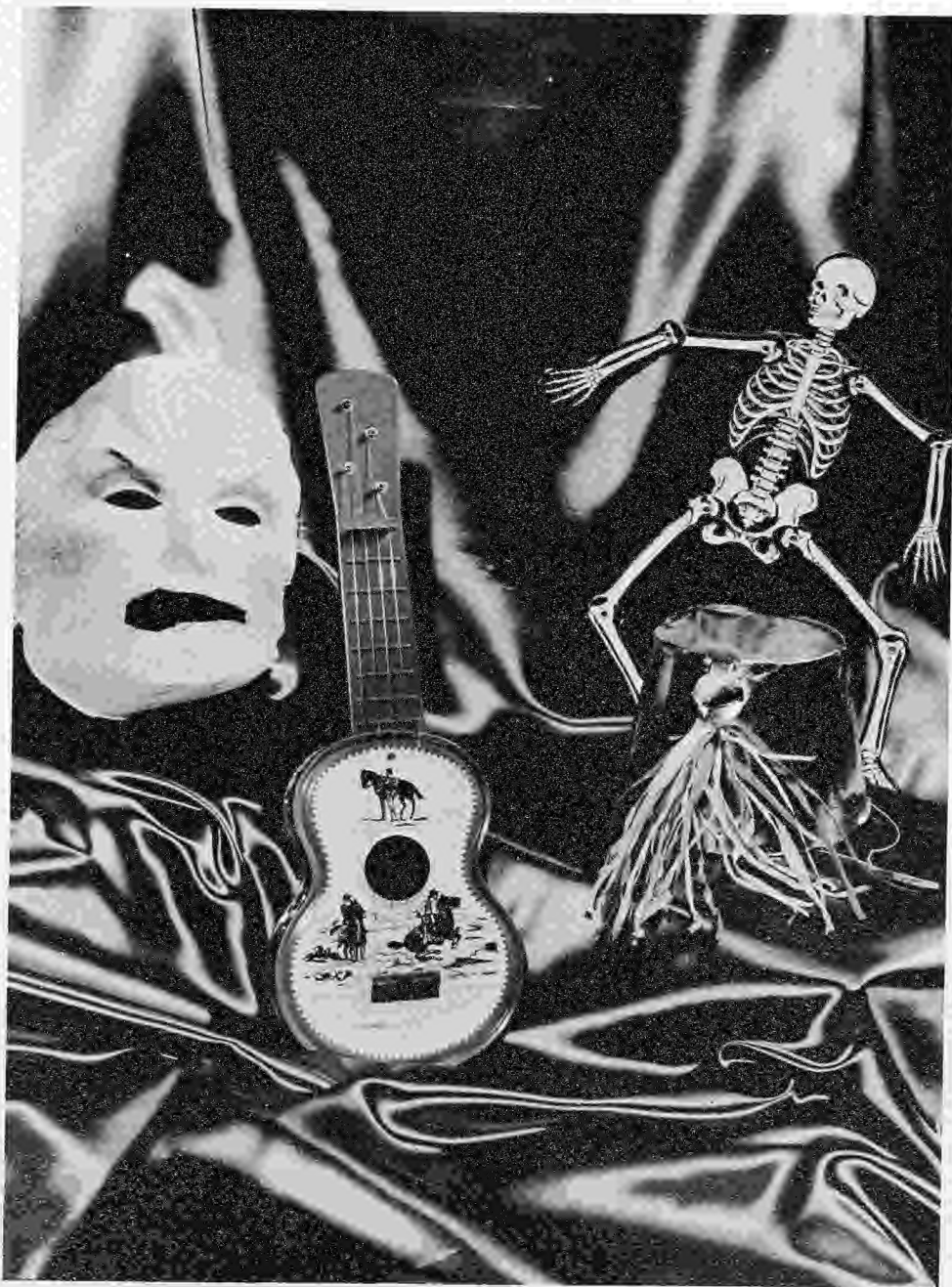
Cooks

Marion Gibson
Pauline Hamann



Custodian

Ted Groom



HUMOR



ADVERTISING

Dear Twilla
When you are married
and have twins
Don't come to
my house for
softy pms.
Helen Hill

NOW IT'S PEPSI



Dear Twilla
You are a nice girl
but bad in some
ways. You and
George have been
kissing. I know.
We have met!

FOR THOSE WHO THINK YOUNG

Dear Nosey,
I hope your
eyes always get your
are around when you
see and
statefully yours
Peggy

Dear to wife
it has been
nice knowing
you this far
and hope to know
you with you
in bond
Jim
Bank

COMPLIMENTS

OF

ST. JOSEPH LIVESTOCK COMMISSION COMPANY

PHONE AD 8-0187

SOUTH ST. JOSEPH, MISSOURI

*Don't tweet,
Don't lie #
Don't lie #
he # #
Beth*

COMPLIMENTS

OF

SWIFT & HENRY

PHONE 8-3314

ST. JOSEPH, MISSOURI

YOU

IT

LIKE

LIKES



IT

YOU

WE ARE BOOSTERS

OF

STEWARTSVILLE HIGH SCHOOL

S & M Athletic Goods Co.

"IT PAYS TO PLAY"

615 FRANCIS STREET

ST. JOSEPH

MISSOURI

COMPLIMENTS OF

Powell Grain Company

LIVESTOCK AND HEAVY HAULING ANYWHERE

P.S.C. AND CARGO INSURED

DONNIE POWELL, OWNER

PHONE NO 9-3414

STEWARTSVILLE

MISSOURI

COMPLIMENTS OF

J. L. Brown Lumber Company

LUMBER, BUILDER'S SUPPLIES,

PAINTS, FENCE, HARDWARE

PLUMBING AND ELECTRICAL SUPPLIES

AND APPLIANCES

OSBORN

STEWARTSVILLE, MISSOURI

MAYSVILLE

CONGRATULATIONS

TO THE

GRADUATING CLASS

OF

1962

Peacock's Pancakes

SOUTH BELT HIGHWAY

ST. JOSEPH, MISSOURI

Tik-Tok Drive-In

FINEST FOOD IN ST. JOSEPH

"ON THE BELT"

ST. JOSEPH

MISSOURI

Belt Super Market

OPEN 'TIL 9

BELT HIGHWAY AT MITCHELL

ST. JOSEPH

MISSOURI

COMPLIMENTS

OF

Tucker's Feed Store

SOUTH BELT

ST. JOSEPH

MISSOURI

NUTS TO YOU FROM GUY'S

(AND CHIPS TOO)

Guy's Nut & Potato Chip Co.

631 SOUTH 6TH STREET



Skateland

Public Sessions - Friday, Saturday, Sunday, Tuesday - 8:00 p.m.

Party Nights - Monday, Wednesday, Thursday

Sunday Matinee - 2:00 p.m.

Parties For Other Hours May Be Arranged

Phone AD 2-0639

36th & Frederick Avenue

St. Joseph

Missouri

Compliments Of

Ross-Frazer Supply Co.

St. Joseph, Missouri



Compliments Of
**Cameron Equipment Company
John Deere**



Sales And Service

Phone 632-2043

Cameron

Missouri

Compliments Of

Offutt Garage

Phone NO 9-3366

Stewartsville

Missouri

Compliments Of

Cameron Chiropractic Clinic

Dr. K. W. Clevenger

Dr. K. L. Hayden

Cameron

Missouri

Ballinger's Thrif-Tee Food Store

Fresh Fruits , Meats And Vegetables

General Line Of Dry Goods

We Sell For Cash

Phone No 9-3269

Stewartsville

Missouri

Moore's Welding Supply Co.

Airco Gases - Supplies - Equipment

Fire Extinguisher Services

Phone AD 2-8152 And AD 3-1403

1101 S. Eighth Street

St. Joseph

Missouri

Compliments Of

Missouri Livestock Commission Company

Phone AD 8-0696

South St. Joseph

Missouri

Compliments Of

Vallery & Baker Livestock Commission Company

Phone AD 8-0625

South St. Joseph

Missouri

Connell Hardware Co.

Forrest Waters, Owner

Hardware - Plumbing - Electric Supply

Phone

HA 4-3715

Gower

Missouri

Compliments Of

Dutton Sheep Commission Co.

Day Phone -- AD 8-4536

Night Phone -- AD 2-7769

South St. Joseph

Missouri

Phone
AD 8-1793

Producers Livestock Marketing Association

Phone
AD 8-1794

100% Co-operative

Farmer-Rancher Owned And Controlled

South St. Joseph

Missouri

Compliments Of

Of

St. Joseph Auto Parts

St. Joseph

Missouri

Send Your Livestock To

Colt, Wall & Bethal Comm. Co.

St. Joseph

Missouri

Heady & Fannen Livestock Comm. Company

South St. Joseph

Missouri

Minor-Hunter-Boswell Livestock Commission Co., Inc.

Phone 8-0440

326-328 Livestock Exchange Building

South St. Joseph

Missouri

St. Joseph Light & Power Co.

514 Francis Street

St. Joseph

Missouri



Powell & Hammer

Hog Order Buyer

Phone NO 9-3414

Stewartsville

Phone AD 8-4555

St. Joseph

The Driftwood

Smorgasbord - Table Service

Steaks - Sea Food - Chicken

Bar-B-Q Ribs

Phone AD 4-2053
For Reservations

3005 Pear Street
St. Joseph, Missouri

Dari-Ette

Broasted Chicken

Sandwiches - French Fries

Malts - Sundaes - Sodas

1302 South Belt Highway

Phone AD 2-4993

Compliments

Of The

Clarksdale Superette

Clarksdale

Missouri

Benny's Feed & Produce

Feed, Seed, Wool, Fertilizer

Owner - Harry S. Swartz

Clarksdale

Missouri

Justrite



Western Dairy & Ice Cream Co.

St. Joseph

Missouri

Wurlitzer Piano

Conn Band Instruments

Wurlitzer & Conn Organs

Exclusive Dealer

The Eshelman Music House

Magnavox Stero Hi-Fi & Television

117 South 6th

St. Joseph

Missouri

Strathmann Studio

A. B. Strathmann

Phone AD 2-8092

118 South Eighth Street

St. Joseph

Missouri

Joe Optician's

"The Diamond Center"

702 Felix Street

St. Joseph

Missouri

Consumers Co-op Services, Inc.

Feed - Seed - Fertilizer - Petroleum

Phone KE 9-2171

Plattsburg - Trimble - Lathrop

Missouri

Gray Furniture

Furniture - Bedding - Floor Covering - Gifts

Phone KE 9-2833

Plattsburg

Smithville

Luggage - Handbags - Fine Gifts

St. Joseph Trunk Company

718-720 Francis Street

St. Joseph

Missouri

Schultz Studio

"If there's beauty we take it
if none we make it"

807 Frederick Ave.

St. Joseph, Missouri

Farmers State Bank

Capital And Surplus \$200,000

Cameron

Missouri

Hale's Market

Groceries & Fresh Meats

Plattsburg

Phone KE 9-2114

Gower

Phone NA 4-6885

Stucker's

Men's And Boy's Clothing

Cameron

Missouri

Plattsburg Leader

"Covers Clinton County Like Dew"
Published Every Friday
John And Helen Biggerstaff, Publishers

Plattsburg

Missouri

Virgil Abbett

Linoleum, Carpet, Asphalt Tile
Venetian Blinds & Window Shades

1405 Frederick Ave.

Phone AD 2-3184

St. Joseph, Missouri

Provident Savings & Loan Assn. of St. Joseph

Savings Insured Up To \$10,000 By The
Federal Savings & Loan Insurance Corporation

Current Dividend Rate 4%

Phone AD 4-1643

St. Joseph, Missouri

513 Francis Street

Getchell Laundry & Dry Cleaning Company

Pick-up And Delivery Free

We Give S & H Green Stamps

Phone AD 4-0892
112 North Second Street

St. Joseph

Missouri

Compliments Of

Sprague & Newhart

Wallpaper - Paints - Varnish

All Veterinary Supplies On Hand At All Times

Phone No 9-3223

Stewartsville

Missouri

Compliments Of

**Ralph Colhour Blacksmith
& Welding**

Hardware And Repairs

Phone NO 9-3340

Stewartsville

Missouri

Compliments Of

Gibson Feed & Seed

Phone NO 9-3245

Stewartsville

Missouri

Richard Schneider

Auctioneer

Phone NO 9-3434

Stewartsville

Missouri

J. P. Grimes

Soil Conservation Contractor
Excavating - Land Clearing
Terracing

Phone NO 9-3271

Stewartsville

Missouri

Bender's Prescription Shop

"Make Our Store Your Headquarters In St. Joseph"

619 Francis Street

St. Joseph

Missouri

For The Best In Athletic Equipment

Spector Sporting Goods

Fifth And Felix

St. Joseph

Missouri

Risler Music Shop

Finest Make Of Band Instruments At Lowest Cost

Lowery Organs And Kimball Pianos

1005 Frederick

St. Joseph

Missouri

Farmers Equipment Company



Phone
AD 4-5298

Your Allis-Chalmers Dealer
Sales And Service

640-42-44 South Sixth Street



Phone
AD 4-9800

St. Joseph, Missouri

Compliments

Of

Perry Bauer

Osborn Elevator

Purina Chows

Skelly Gas And Oil

Custom Grinding And Mixing

Osborn

Missouri

Cameron Savings & Loan

"Teach Your Dollars To Make More Cents"

Cameron

Missouri

We, the Seniors of 1962, would like to take this opportunity to show our appreciation for those who contributed to our 1962 annual.

Gassman's Pharmacy

"Your Prescription Pharmacy"

Phone KE 9-2541

Plattsburg

Missouri

Compliments Of

Roy's "66" Service

Roy Horsman

24-Hour Wrecker Service
Complete Tire Service

Phone HI 9-1801

Maysville

Missouri

Compliments Of

Robinson & Miller

John J. Robinson and Harold L. Miller

Abstract And Title Insurance

Maysville

Missouri

Modern Cleaners

"A Step Ahead in Dry Cleaning"

Dean L. Harsh, Owner

2510 Frederick

Phone AD 4-1461

St. Joseph

Missouri

Vapotane Gas Service

Bulk & Bottles

Phone KE 9-2311

Plattsburg

Missouri

Congratulations Seniors
From

Nu-Modern Barber Shop

Most Up-to-date Barber Shop
in Northwest Missouri

"We Strive To Satisfy With Quality"

Bart Davis - Verl McClevee

West Side of City Park

Cameron

Missouri

Don Soper's Market

Phone KE 9-2321

Plattsburg

Missouri

Newby Bros.

Ful-O-Pep Feeds

Phone KE 9-2124

Plattsburg

Missouri

Platt College Of Commerce

"We Train You, We Place You."

Be An Accountant, Secretary,
Or Business Operator

Felix at Eighth Street
Phone AD 2-5463

St. Joseph

Missouri

Ellenberger Lumber, Inc.

Doane "Poleframe" Building

Cuckler Steelspan

Phone KE 9-2442

Plattsburg

Missouri

Anderson Typewriter Company

820 Frederick Avenue

Phone AD 2-2222

St. Joseph

Missouri

Compliments

Of

Heinie's Steak House

Phone AD 2-0410

St. Joseph

Missouri

The Custom Shop

Ed Cowman, Owner

"St. Joseph's Smartest Young Men's Shop"

Frederick At Eighth Street

St. Joseph

Missouri

Quality Used Cars

Bob Cutberth Motors

1616 South Belt Highway

St. Joseph

Missouri

Compliments

Of

Belt Bowl

210 North Belt

Phone ADams 3-1054

St. Joseph

Missouri

Swan & Searce Abstract & Loan Company

Real Estate, Farm Loans
And Insurance Of All Kinds

Phone KE 9-2541

Plattsburg

Missouri

Compliments Of

Summerfield Funeral Home

Mr. and Mrs. W. E. Summerfield, Owners

Ambulance

Phone NO 9-3277

Stewartsville

Missouri

Compliments Of

Collin's Cate

Home Cooked Meals

Open Every Day But Sunday

Phone No 9-3247

Stewartsville

Missouri

Compliments

Of

Dr. E. T. Irinyi

Stewartsville

Missouri

Compliments Of

Dick's Radio & TV Service

Phone NO 9-3227

Stewartsville

Missouri

Hartell Electric Company

Hotpoint

R.C.A. TV

DeKalb Seed Corn
Contract Wiring

Phone KE 9-2322

Plattsburg

Missouri

Ames Jewelry & Gift Shop

Fine Gifts And Repairing
Bulova - Gruen - Hamilton Watches
Tru-Blu And Feature Lock Diamonds

Cameron

Missouri

Compliments Of

Kibby's Garage

Gas, Fuel Oil, Tires, and Accessories

Earl Kibby, Proprietor

Stewartsville

Missouri

Sharp's Truck & Tractor Co.

McCormick Tractors & Machines
International Trucks And Chain Saws
Dodge Sales & Service

Highway 36 & 69

Cameron

Missouri

Cameron Greenhouse

Your Florist

"Flowers For All Occasions"

Jerry Shear

Phone 632-2358

Cameron

Missouri

Compliments Of

Stewartsville Produce

John Peters, Proprietor

Phone No 9-3211

Stewartsville

Missouri

Johnson Stephens Auto Repair

Automatic Transmissions A Specialty

Cameron

Missouri

George Fry Hardware

Hardware - Paints - Electrical Goods

Phone KE 9-2621

Plattsbury

Missouri

Compliments Of

Files A-G Store & Garage

Automotive And Tractor Repair

Phone HI 9-2412

Amity

Missouri

Compliments Of

Leslie Keesaman

General Carpenter

Osborn

Missouri

E & H Oil Company



Osborn

Missouri

Compliments

Of

Beck's Standard Station

Osborn

Missouri

Compliments

Of

Schuster's Pool Hall

Gower

Missouri

White Hardware

Phone HA 4-6115

Gower

Missouri

The Farmers Bank



Gower

Missouri

Miller Grill

South End of the Belt Highway

St. Joseph

Missouri

Compliments

Of

Mead Garage

Gower

Missouri

Motel Shangri-La & Restaurant

Phone

AD 2-5422

St. Joseph

Missouri

Compliments

Of

James Steak House

"choice steaks"

Junction
371-169-29

St. Joseph

Missouri

Compliments Of

Poe Brothers Livestock Commission Company

South

South St. Joseph

Missouri

Compliments

Of

Charles Hadley Electric Shop

Phone NO 9-3238

Stewartsville

Missouri

Lee' Bottle Gas Company

"Be At Ease And Buy From

Lee's Propane Gas"

Phone

AD 4-068

Highway 59 East

St. Joseph

Missouri

Mullinex's Hi-Way Cafe

Dining Room Open Evenings and Sundays

Phone NO 9-3289

Highway 36

Stewartsville

Missouri

Compliments Of

Leaverton Used Cars & Auto Parts Company

"New And Used Parts"

2135 South Eighth Street

Phone AD 4-3314

St. Joseph

Missouri

Compliments Of

Elbert's Department Store

Phone HI 9-2701

Maysville

Missouri

Compliments

Of

Belt State Bank

St. Joseph

Missouri

Compliments

Of

Kern's Service Station

Gas, Oil, Lubrication Jobs

Ninth And Mitchell

St. Joseph

Missouri

Compliments

Of

Conley Blacksmith & Welding

Clarksdale

Missouri

Kinder's Prescription Shop

Kirkpatrick Building

622 Francis Street

St. Joseph

Missouri

IT'S

Kirwan's

602-14 Messanie

St. Joseph, Missouri

FOR

Furniture - Carpets
Appliances

Dependable Quality----- Popular Prices

"Clothes For The Young

Man Who Cares What

He Wears."

Joe Geller

711 Felix

St. Joseph, Missouri

Hund & Eger Coca-Cola Bottling Company

Bottlers Of Coca-Cola And Soda Water



Phone AD 2-7766

St. Joseph

Missouri

Harold Phelps



1602 Frederick Ave.

Office AD 3-1413

Life - Fire - Auto

St. Joseph, Missouri

Compliments Of

Ranger Oil Company

"Where You Save Money"

"Cash Savings Are Best"

Malone's Restaurant

Air Conditioned

"We Bake Our Own Pies"

Phone KE 9-2842

Plattsburg

Missouri

John Watkins Saw Mill & Lumber Company

Motor Service

Phone NO 9-3218

Stewartsville

Missouri

Compliments Of

Lyddon & Fluhart

Phone NO 9-3266

Stewartsville

Missouri

Jerry Jackson

APCO Station

"No City Tax"

Phone

AD 2-0592

St. Joseph

Missouri

Compliments Of

Bill O'Dell's Barber Shop

Phone No 9-3329

Stewartsville

Missouri

Compliments Of

Clarksdale Bank



Clarksdale

Missouri

Compliments Of

First National Bank



Stewartsville

Missouri

Compliments

Of

Starks Drug Store

Gower

Missouri

Compliments Of

Griffin Garage

Auto, Truck, Tractor

General Overhaul & Repair

Phone NO 9-3264

Stewartsville

Missouri

J. H. Thornton & Co. Hardware

Bottle Gas - Paint - Glass

Clarksdale

Missouri

Complete Automotive Service

Roades "66" Service

1415 South Belt Highway

Phone AD 2-0490

St. Joseph

Missouri

Compliments

Of

Cleo Gillip

Phone 74-6

Clarksdale

Missouri

Belt D X Super Service

Belt & Mitchell

Phone AD 2-3048



St. Joseph

Missouri

Congratulations

To The

Graduating Class Of 1962

Shoemaker's Station

36 Highway

Easton

Missouri

Bennett Garden Center

Store No. 1--806 South Belt Highway

Store No. 2--401 Felix

Seed

Nursery

Plants

Pottery

Roses

Trees

Shrubs

Gifts

St. Joseph

Missouri

First National Bank

Member FDIC

Plattsburg

Missouri

Midge's Cafe

Home Cooked Meals

Breakfast, Lunch, Dinner

Open Ev eryday But Sunday

St. Joseph

Missouri

Compliments

Of

Coffey's Garage

Highway 36

Easton

Missouri

Compliments
Of
VELMA'S CAFE

Gower Missouri

GOWER LOCKER
Groceries, Feed, and Produce

Phone HA 4-3475
Gower Missouri

IMPERIAL SERVICE STATION

Cameron Missouri

KERREN BEAUTY SALON
112A North 8th Street
Phone AD 4-2936

St. Joseph Missouri

Compliments Of
STEWARTSVILLE POST OFFICE

Stewartsville Missouri

GOLD-N-GLAZE DONUTS
1823 Frederick Avenue
Phone AD 2-3568

St. Joseph Missouri

Compliments Of
BUD'S BARBER SHOP
"Flattops A Specialty"

Maysville Missouri

GREGORY REYNOLD'S DARI-KREME

Cameron Missouri

STEFFEN'S BOOK STORE
School, Office And Personal Supplies
114 South Sixth Street

St. Joseph Missouri

Compliments Of
EDWARD L. SIMMONS
First National Bank Building

Plattsburg Missouri
Phone KE 9-3105

A. J. AUGUST CLOTHING COMPANY

Men's And Boys' Store
Fourth And Felix
Phone AD 4-2715
St. Joseph Missouri

CLAWSON DRUG COMPANY
"Prescriptions Accurately Compounded"
Phone 632-382

Cameron Missouri

<p>ALLDREDGE FEED AND SUPPLY COMPANY 3734 Pear Street Phone AD 4-8934</p> <p>St. Joseph Missouri</p>	<p>QUIGLEY FORD & MOTOR COMPANY New And Used Cars Best Deal In Town And All Around</p> <p>Cameron Missouri</p>
<p>DUNLAP REXALL DRUGS W. S. Dunlap, Proprietor Prescriptions Our Specialty</p> <p>Cameron Missouri</p>	<p>Compliments Of STANDLEY VARIETY</p> <p>Plattsburg Missouri</p>
<p>LEU'S PRESCRIPTION DRUG STORE</p> <p>Cameron Missouri</p>	<p>DRINNIN SHOES</p> <p>Cameron Missouri</p>
<p>KENNEY AND HARTZELL INSURANCE AGENCY 121 East Third Street</p> <p>Cameron Missouri</p>	<p>HOVENGA GARAGE AND IMPLEMENT Minneapolis Moline Machinery Phone NO 9-3405</p> <p>Stewartsville Missouri</p>
<p>Compliments Of ORVIL AND DOROTHY NORRIS</p> <p>Clarksdale Missouri</p>	<p>E & C TRUCKLINE Livestock Trucking Phone AD 8-0243</p> <p>St. Joseph Missouri</p>
<p>Compliments Of ANDERSON'S STORE AND PRODUCE</p> <p>Clarksdale Missouri</p>	<p>MAPLE PRODUCE AND LOCKER Phone 38</p> <p>Clarksdale Missouri</p>
<p>Compliments Of RAY CLINTON'S BARBER SHOP</p> <p>Clarksdale Missouri</p>	<p>Compliments Of A Friend</p>
<p>PLATTSBURG LUMBER AND HARDWARE W.E. McCampbell "Builders Of The Future Phone KE 9-2221</p> <p>Plattsburg Missouri</p>	<p>WORDEN'S SECOND HAND STORE Phone NO 9-3270</p> <p>Stewartsville Missouri</p>
<p>SOOTER'S AUTO BODY SHOP Vernon Sooter - Lloyd Parks 24-Hour Wrecking Service Phone 632-3904 Or 632-3175</p> <p>Cameron Missouri</p>	<p>CLAY'S SERVICE Tire Service - Lubrication</p> <p>Clarksdale Missouri</p>
<p>NORMAN BROMLEY TRUCKING Stock, Grain, Coal Phone NO 9-3476</p> <p>Stewartsville Missouri</p>	<p>WALTER'S BUILDING AND SUPPLY CO. Hardware And Building Supply</p> <p>Clarksdale Missouri</p>
<p>LLOYD WATSON TRUCK LINE Phone NO 9-3460</p> <p>Stewartsville Missouri</p>	<p>WOLF'S STORE</p> <p>Osborn Missouri</p>



AUTOGRAPHS

Dear Sweet
Well, here goes
I'm saying good-bye
in this class with you. I
like to say a lot, but I have
little room. So I say
Keep you up the good
work in school. We
you next year. (I hope)

Dear Sweet
I saw you
in the sea
both of you in the
I can find
I can find
I can find

Dear Sweet,
I'm sure
of fun together on
the bus with Rommie
and Roger too. Hope we
continue to have more
fun together. I hope you
can look up to you and
I can find answers.
Be good
No funny
changed nickname

Dear Sweet
When God made cookies
He made them in the night!!
He made them in such a hurry!!
He forgot to paint them white!!!!
Eskimos sleep in their little leas skins,
and sleep cozy & suppose,
But last night I slept in my little bare skin,
and darn nearly froze!!!!!!

It tickles me,
It makes me laugh;
To think that you
want my
autograph;

Dear Sweet
I have enjoyed
being with you
this year. I hope
you will enjoy
your last year
at school. I hope
you will have
a great time
in the future.
I hope you will
be happy and
successful.
I hope you will
be a good person
and a good friend.
I hope you will
be a good student
and a good citizen.
I hope you will
be a good person
and a good friend.
I hope you will
be a good student
and a good citizen.

Beth.
I hope you will
be a good person
and a good friend.
I hope you will
be a good student
and a good citizen.
I hope you will
be a good person
and a good friend.
I hope you will
be a good student
and a good citizen.

Dear Sweet
Remember in the Olden Days
When you and I were young,
We used to pull each others hair
and chew each others gum.
Ain't those two girls "dums"!!!!!!

Well, here it is the close
of another year. Just
think next year we will be 8th
Graders. Seems impossible
doesn't it. I have enjoyed these
1 years with you and am looking
forward to the next 5 years. I am glad
you got promoted to High
School Band. Thanks for the answers.
Sometimes I never would have
got them figured out!!! I hope you
don't mind * if I take up the
whole (goof!!!) page. Well I had
better say good-bye.

UR 2 young
2 go
4 boys!!!!!!
I hope you will
be a good person
and a good friend.
I hope you will
be a good student
and a good citizen.
I hope you will
be a good person
and a good friend.
I hope you will
be a good student
and a good citizen.

Be Good
Yours best neighbor,
Carol ("Louie")
Ring-a-ding-dong-bell
last but not least "Miner"
Y YUR
Y YUB
Y CUR
Y YME