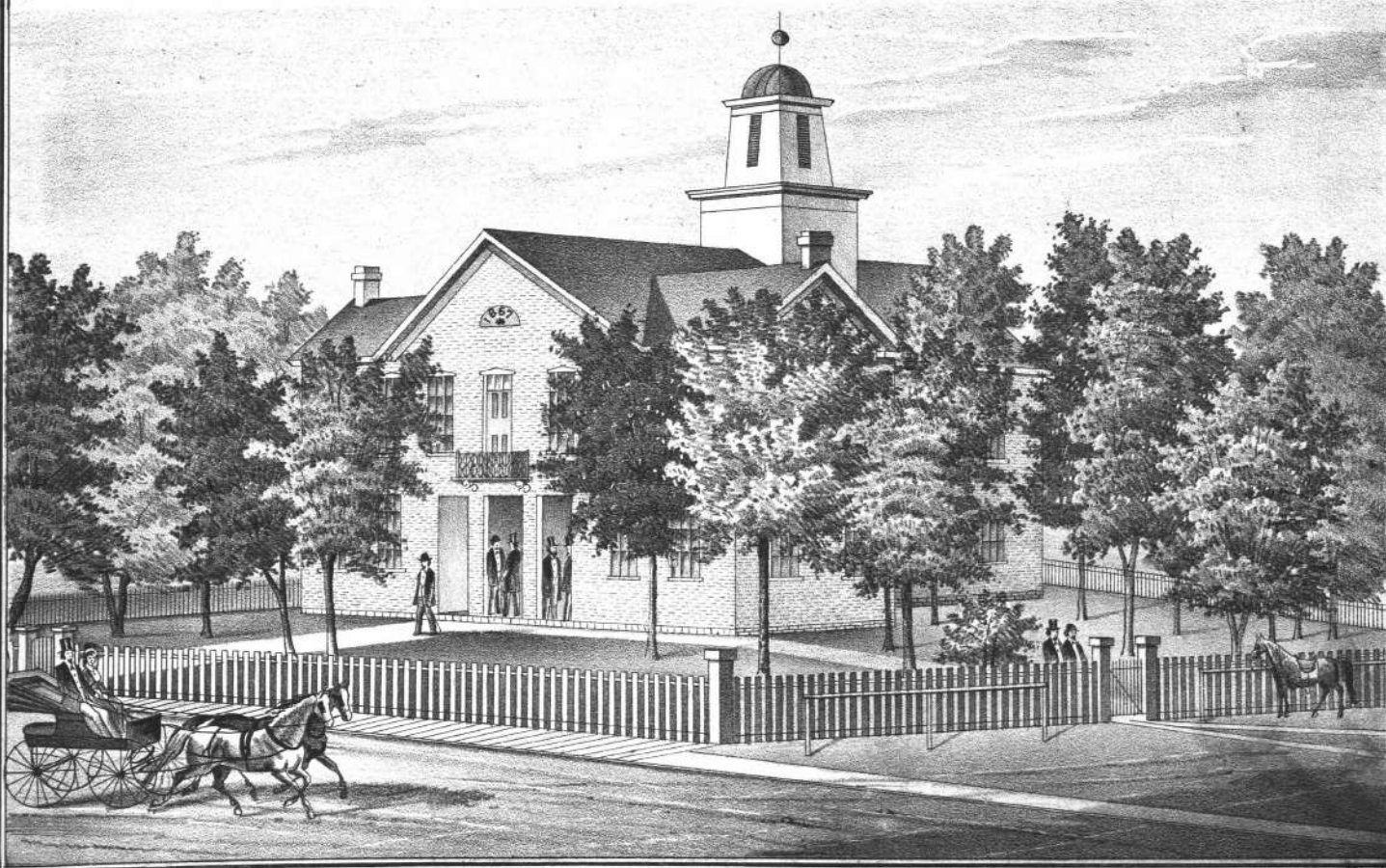


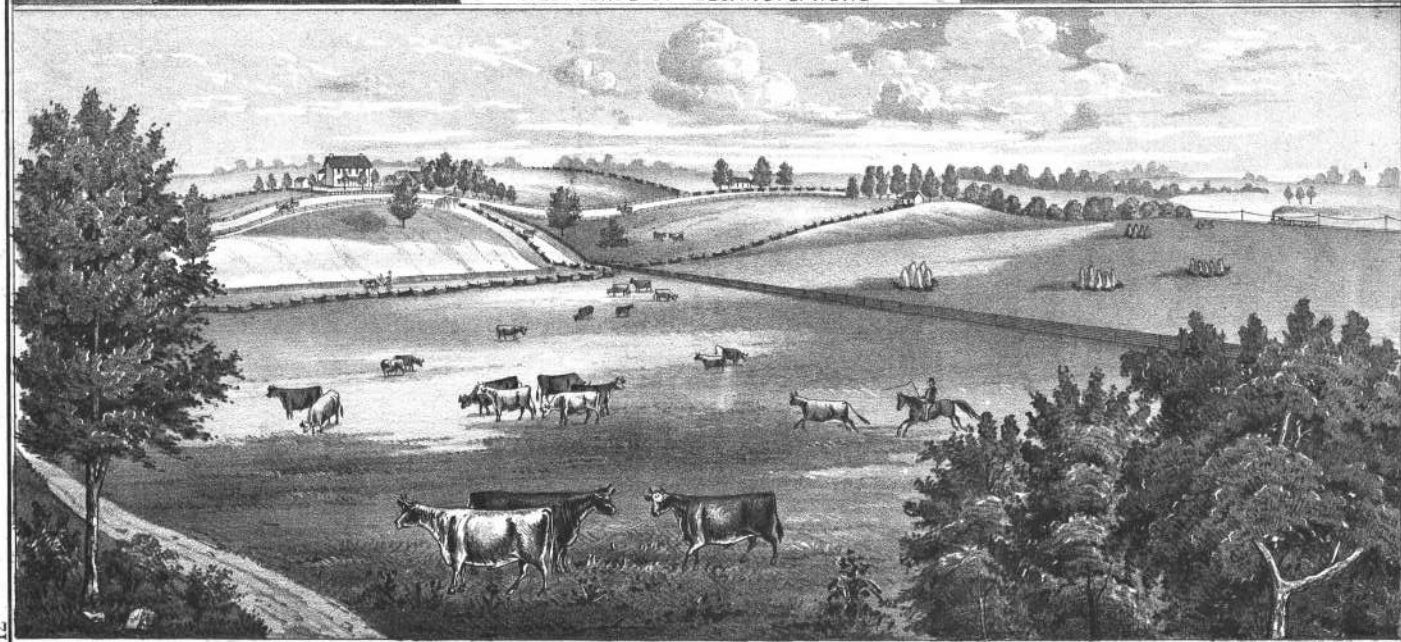
RESIDENCE OF HUBBARD HART, 2 MILES S. OF BROOKFIELD, LINN CO. MO.



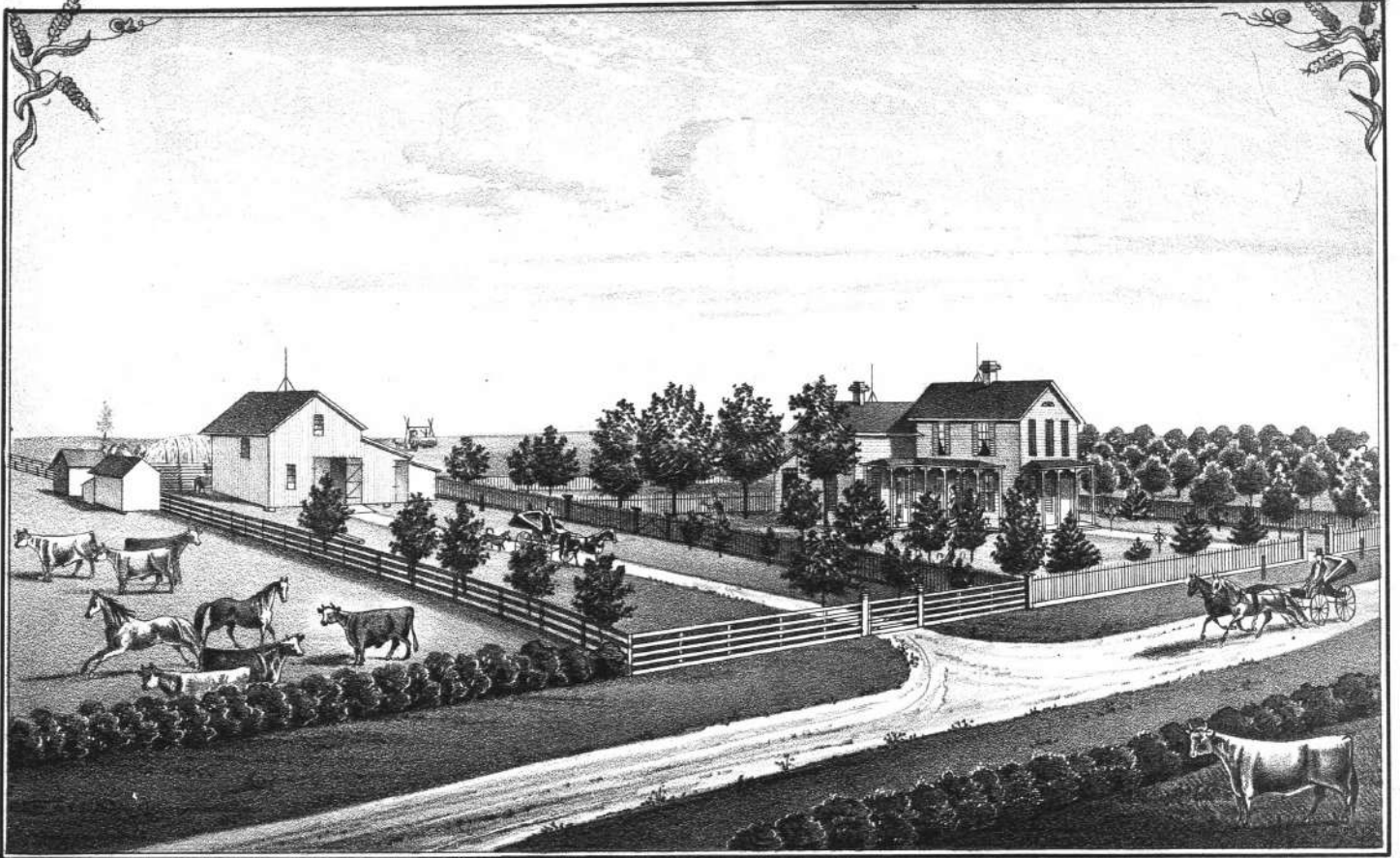
LINN COUNTY COURT HOUSE.



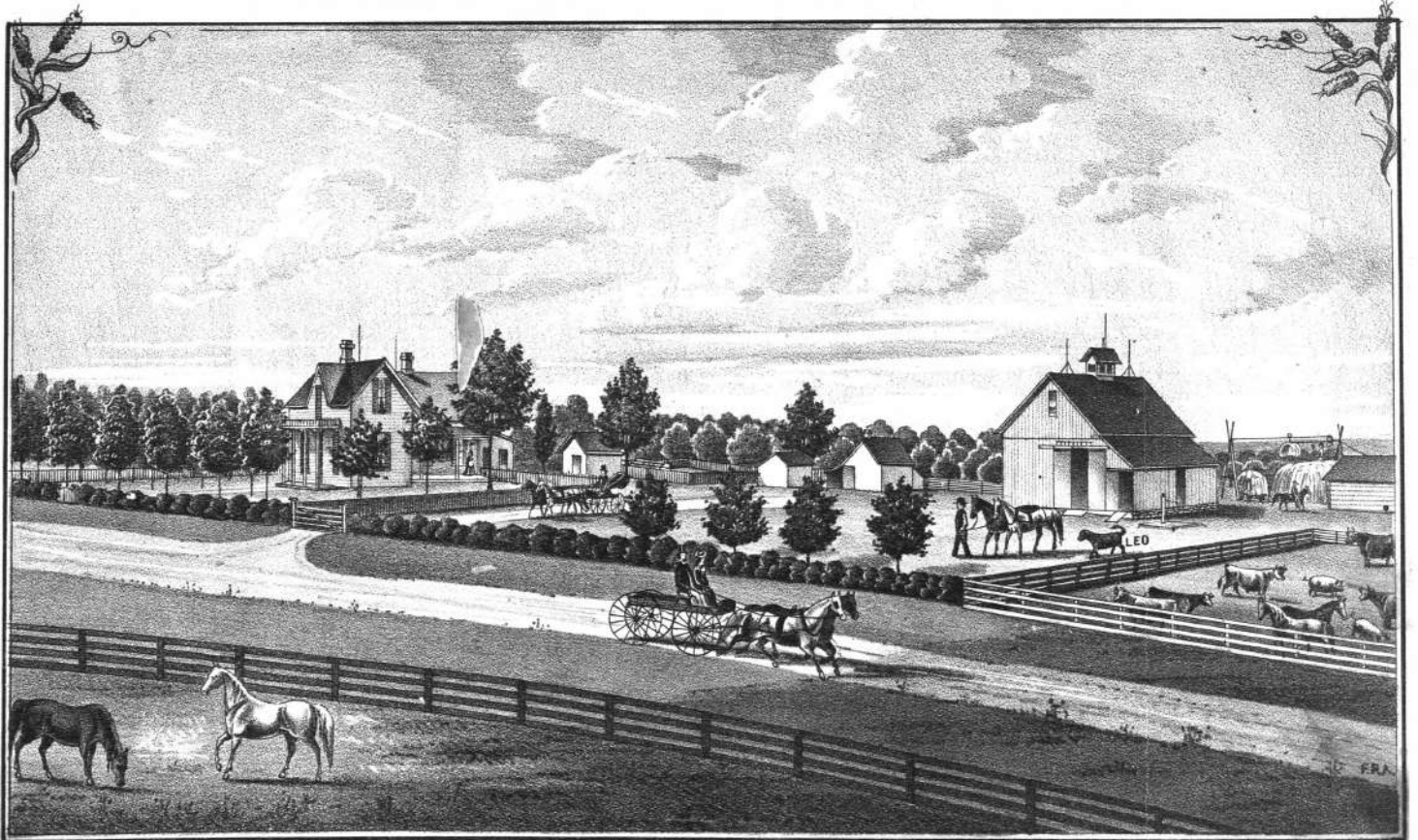
RESIDENCE OF GEO. W. STEPHENS



FARM AND STOCK RANCHE OF GEO. W. STEPHENS, 2½ MILES EAST OF MEADVILLE, LINN CO. MO.
FARM FOR SALE CONTAINING 2740 ACRES.



FARM RES. OF COL E.C. BROTT , 3.M.S.W. OF BROOKFIELD, LINN CO. MO.



FARM RES. OF GEO. P. HARVEY , 3. M. S. W. OF BROOKFIELD, LINN CO. MO.



J. M. PRATT
CO. JUDGE.



GEO. N. ELLIOTT
EDITOR "CHRONICLE"
BROOKFIELD.



COL. E. C. BROTT.



H. LITHGOW.
ATT'Y AT LAW
BROOKFIELD

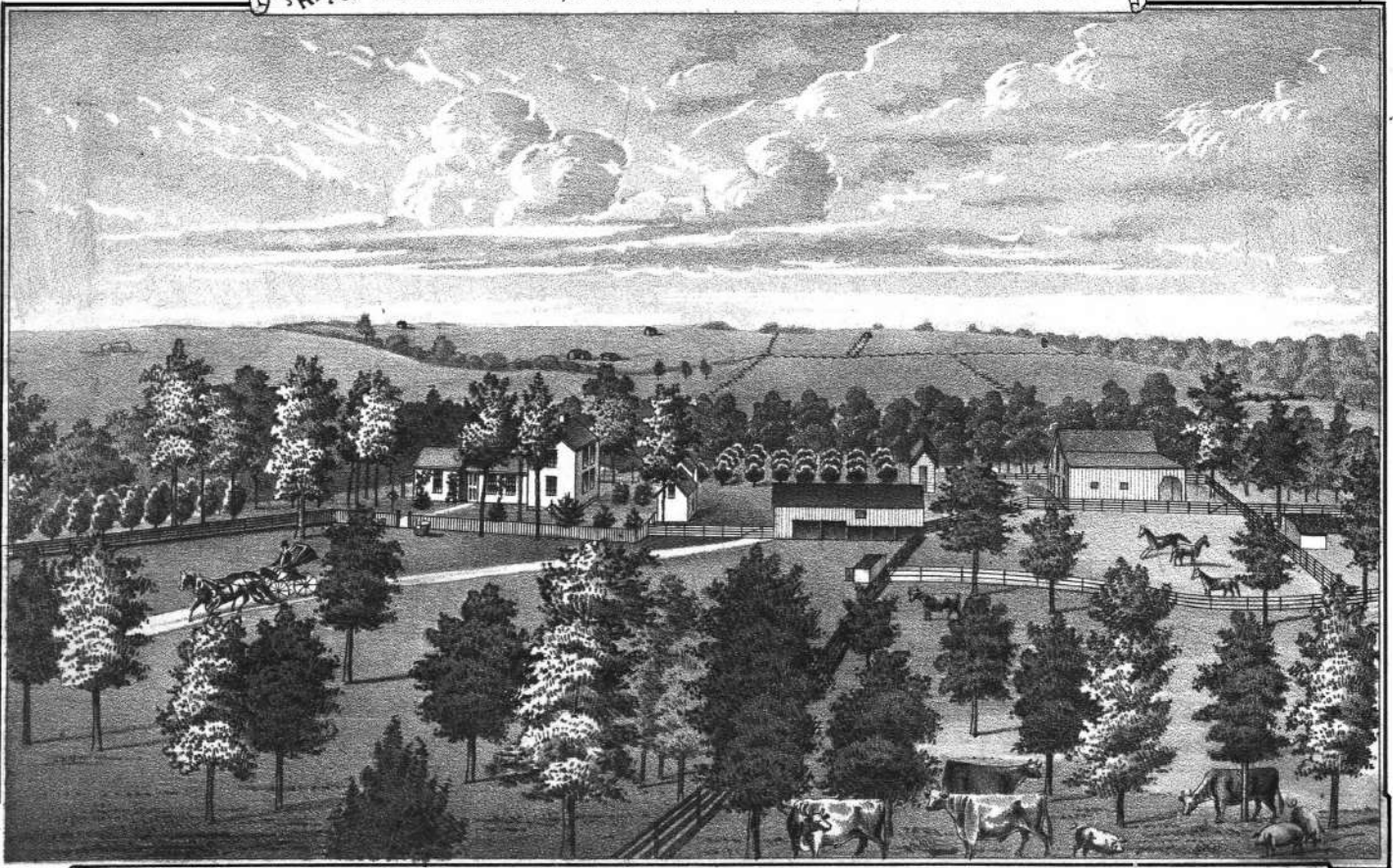


DR. O. H. WOOD.
BROOKFIELD, MO.

REPRESENTATIVE MEN OF LINN COUNTY, MISSOURI.



FARM RES. of GEO. ANDERSON, 3 M. S. E. OF LACLEDE, LINN COUNTY, MO.



STOCK FARM OF RUFUS F. TOWER, 4 M. N. E. OF MEADVILLE, LINN CO. MO.
CONTAINING 1200 ACRES.



GEN. I. V. PRATT
LACLEDE



GEO. W. EASLEY.
ATT'Y AT LAW.
LINNEUS



J. D. SHIFFLETT.
JUDGE OF PROBATE COURT.
LINNEUS.

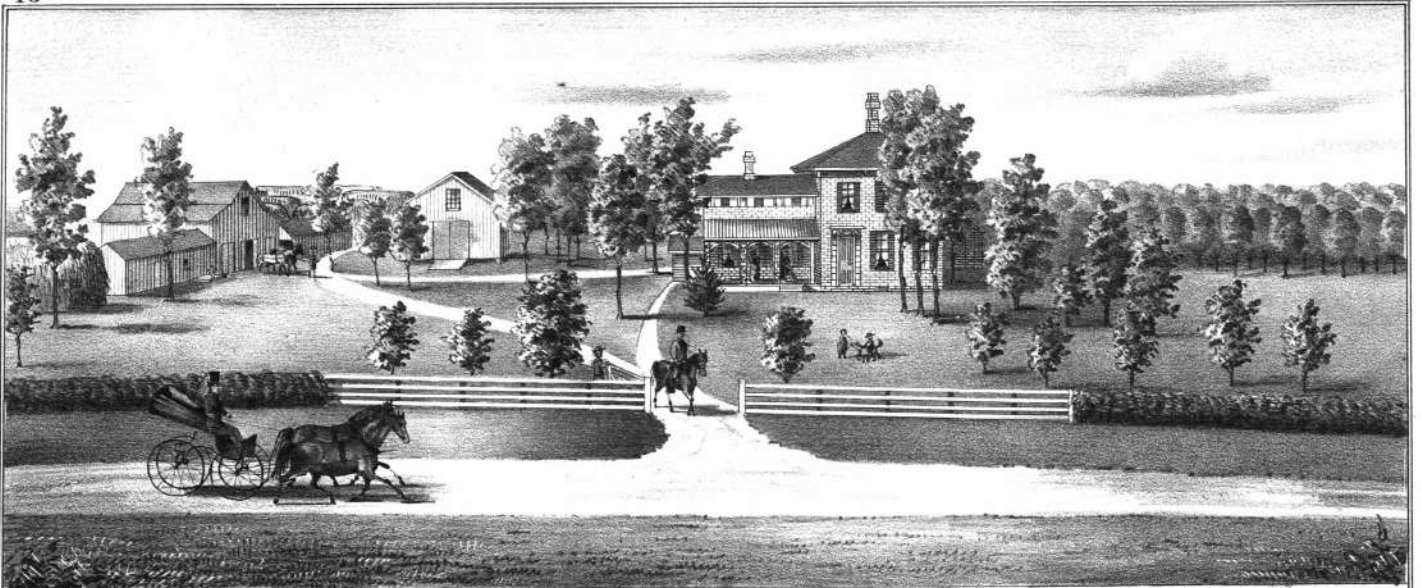


B. J. NORTHCOTT
ATT'Y AT LAW.
LINNEUS



J. B. WILCOX
ATT'Y AT LAW
LINNEUS.

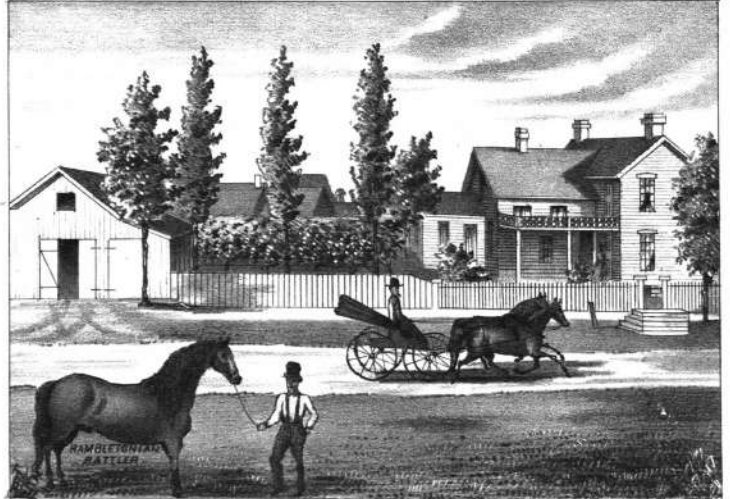
REPRESENTATIVE MEN OF LINN COUNTY, MISSOURI.



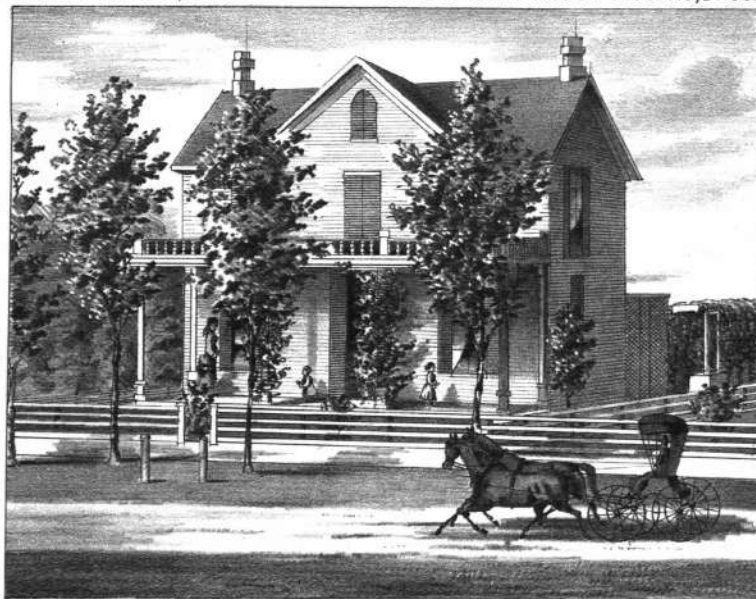
OUR HOME . RESIDENCE OF GILBERT KEMP , 1/2 M. SOUTH OF BUCKLIN , LINN CO. MO.



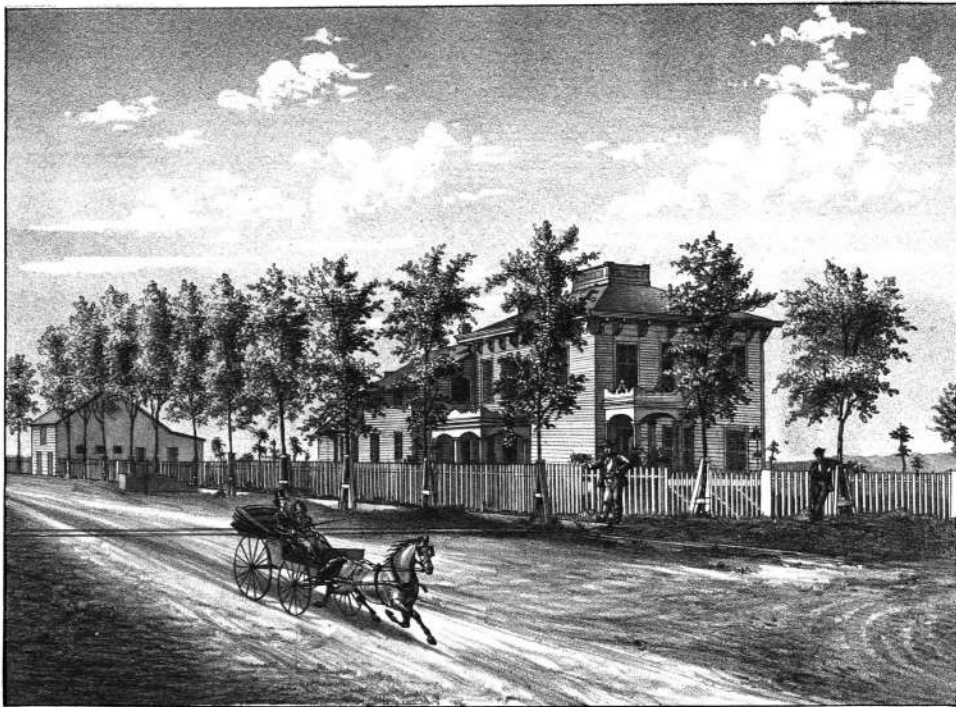
RES. OF JOHN McNICHOLAS , MEADVILLE, MO.



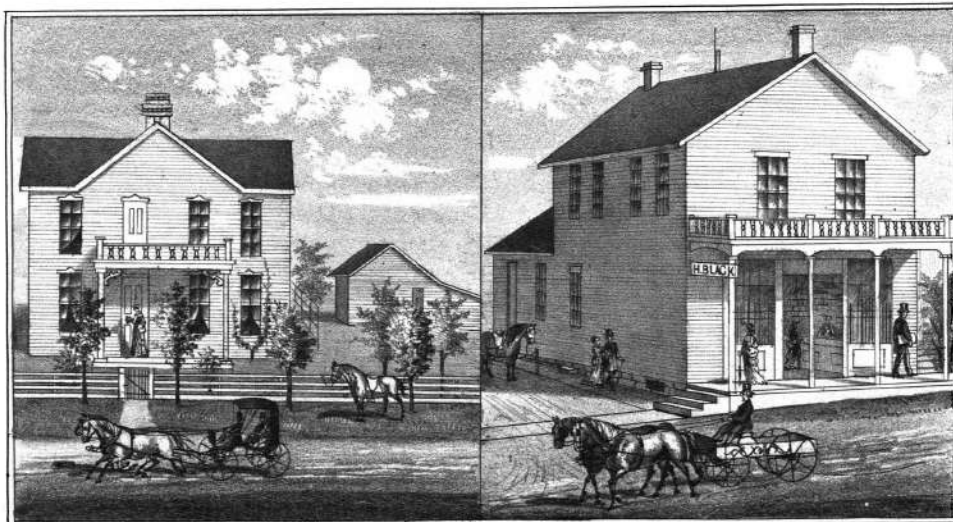
RES. OF DR. N. J. PETTIJOHN , BROOKFIELD, LINN CO. MO.



RESIDENCE OF ABE MARKS, MEADVILLE, MO.



RESIDENCE OF W.H.BROWNLEE.
CORNER OF PARK & MACON STS. BROOKFIELD, LINN CO. MO.



H.BLACK'S, RES. & STORE, MEADVILLE, LINN CO. MO.